

UNDERGRADUATE GUIDE

----- Your future starts here -----



2013

WELCOME TO ACU



Completing an undergraduate degree is a major step towards achieving your goals for the future, and a world of possibility awaits you at Australian Catholic University (ACU) – a publicly funded university open to all.

Completing a degree at one of our six campuses around the country involves much more than lectures and essays.

It involves learning to think critically and be guided by social justice principles. It involves gaining the skills and being inspired to bring about change in your community, profession and industry.

It involves making a difference.

ACU is recognised for its supportive and nurturing learning environment and close links with industry, giving you the chance to gain hands-on experience in the workplace while you study.

Our staff members are leading figures in their fields and passionate about giving students the best possible experience during their time with us.

On campus, you will find an extensive range of support services including academic, careers and Indigenous advisers and counselling services (see page 8).

We recognise that being at university is about more than study, and the quality of our campus life is important to us.

To complete the university experience, student associations organise a busy calendar of social events, including annual balls and cultural and sports activities, to give you a break from your study and the opportunity to spend time with friends (see page 12).

ACU focuses on the delivery of quality programs in specialist areas including education, liberal arts, business, nursing and allied health, social sciences, theology and philosophy, and visual and performing arts. In addition, we will be introducing a new Faculty of Law in 2013 (see page 64).

We are well known for our ability to produce graduates of the highest order; graduates who think critically, are guided by social justice principles and are highly sought after in the job market. Some of our outstanding graduates are featured on pages 4 – 5.

Read on and discover the many opportunities that await you at Australian Catholic University. I look forward to welcoming you in the near future.

Cover image: Mark Munro
Mark Munro Photography
Design: Bonnie Liang, Raymond Ohanesian
Australian Catholic University

Australian Catholic University attempts to ensure the information contained in this publication is correct at the time of production (January 2012); however, sections may be amended without notice by the University in response to changing circumstances or for any other reason. Check with the University at the time of application/enrolment for any updated information.

Australian Catholic University – CRICOS registered provider: 00004G, 00112C, 00873F, 00885B

A handwritten signature in black ink, appearing to read 'Greg Craven'. The signature is fluid and cursive, with a long horizontal line extending to the right.

Professor Greg Craven
Vice-Chancellor
Australian Catholic University

CONTENTS

page

OUR ACU *your choice* 2

Why study at ACU?	3
Where can ACU take you?	4
Campuses across Australia	6
Support while you study	8
Go overseas + get credit	10
ACU: books and more	12
Apply in 4 easy steps	14
Tailor your degree	15

OUR ACU *your courses* 16

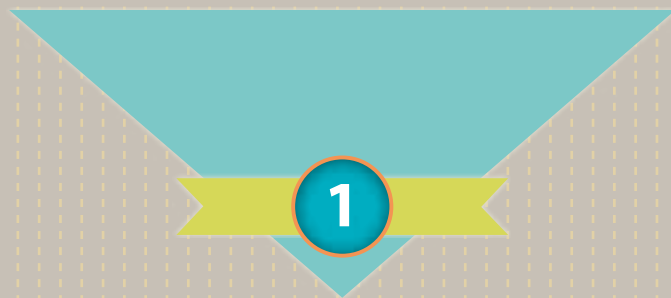
Arts and Sciences	18
Arts	20
Environmental Science	25
Visual Arts and Design and Creative Arts	26
International Development Studies and Global Studies	28
Psychology and Social Sciences	30
Business	34
Education	44
Health Sciences	54
Law	64
Theology and Philosophy	68

OUR ACU *your future* 72

How much does uni cost?	73
Research to create a better world	74
Early Achievers' Program	76
Scholarships at ACU	78
University Experience	79
Course list	80
Course cut-offs	81



OUR
ACU
your choice



WHY STUDY AT ACU?

1

UNIQUE

Australian Catholic University has six campuses around Australia. We aim to empower our students to think critically and ethically, and gain the skills to bring about change in their communities, professions and industries.

2

WE VALUE YOU

As a publicly funded university, we welcome staff and students of all beliefs and backgrounds, and uphold a respectful, open-minded and culturally diverse learning environment.

We support our students in attaining the highest level of academic achievement through the provision of quality teaching and resources.

We are committed to providing equal access to education for all people.

We provide flexible learning options such as part-time study and pathway courses to meet the ever-changing needs of our students.

3

PRACTICAL EXPERIENCE

We build and maintain strong links with our communities and industries to produce highly skilled professionals who are leaders in their field.

Throughout the course of their studies, students undertake professional placements, volunteer work and community service, with many securing excellent jobs before they graduate.

4

MORE THAN STUDY

University is a great place to meet new people and have new experiences.

Each campus student association regularly hosts events such as barbecues, balls and concerts. There are also clubs, societies and initiatives, and sporting events such as ACU Games and University Games.

We are committed to the development of social and community engagement by providing opportunities such as volunteer experience programs which allow students to give back to their communities and make a difference.

5

TRAVEL THE WORLD

Students don't have to wait until they graduate to see more of Australia and the world.

ACU students can attend an overseas university in more than 16 countries, complete an internship with Disney, and work in community programs around the world – all while receiving credit towards their degree.

6

YOUR SUCCESS

We understand that success means different things to different students.

The Office of Student Success works closely with students to meet their unique personal and academic needs. The Office provides academic skills, career development and counselling services, and support for people with special needs or disabilities on each campus.

Campus Life Coordinators and the ACU National Student Association (ACUNSA) ensure students have the resources they need to achieve a healthy study/life balance.

7

CATHOLIC INTELLECTUAL TRADITION

As Australia's leading Catholic university, ACU is fortunate to be supported by the richness of more than 2,000 years of Catholic intellectual tradition.

As a member of the International Federation of Catholic Universities, we are devoted, through research as well as teaching, to communicating truth in every field of knowledge, and to promoting the dignity of all people and the common good.

Where can
**ACU
TAKE
YOU?**



Benny Callaghan

Benny, an arts graduate from ACU, is now Chief Executive of the School of Social Entrepreneurs which runs nine-month programs for would-be entrepreneurs. Benny's students have provided affordable fresh food hampers to struggling families, helped girls in Sierra Leone attend school, and given young people access to driving lessons.

"The school is not about taking experienced entrepreneurs; we're taking ordinary, everyday people with big passion and ideas."

The school is built on the premise that people who experience problems first-hand often have the best ideas on how to solve them, but often lack the skills, confidence, experience and networks to bring them to life.

"Every day I get to associate with some pretty inspired and remarkable individuals, and see their projects go from an idea to an initiative which is changing people's lives."



James Ajaka

James' passion for building brands began while studying a Bachelor of Commerce at ACU, and has taken him from the world of boxing to the role of CEO at Nudie juices.

One of James' first adventures in business came after meeting boxer Kostya Tszyu. "I felt there were so many things he should be doing with his brand," said James, who then went on to secure Kostya a line of boxing equipment, a DVD and a triple book deal. "We put together a whole bunch of initiatives for Kostya which are still around today."

Then in 2002, James was approached by Tim Pethick to launch a fruit juice business. "When we started, there was a blender, one truck and some fruit – we sold 40 bottles in our first week. Now [Nudie is] in every Coles, Woolworths and McDonald's in Australia.

"I always think back to my days at ACU... On a day-to-day basis I still use the things that I learnt at school."



Sarah Forgan-Doane

Sarah chose to study education at ACU because she wanted to make a positive impact on people's lives.

"I was really drawn to ACU's involvement with people," Sarah said. "I admire that. It makes you think outside your own little square."

After graduating from her degree, Sarah took up a teaching position at St John's Primary School in Auburn. Inspired by the impact she was having there, she began to think about what she could do to improve education in poorer nations, and turned her sights to Africa.

She boarded a plane for Namibia where she took up work training teachers and educating students in western Africa.

"The thing I love the most is seeing the teachers' faces after they have developed something new at a workshop and how proud they are of their new resources and skills. It was a very humbling experience."

Sarah later returned to ACU to complete a Masters of Education to better understand how to consult communities about their own goals, rather than imposing an agenda on them as an outsider.



Heather Machin

Bachelor of Nursing graduate Heather never knows what her day will bring, but that's to be expected when you work in a flying hospital and treat blind patients all over the world.

The 32-year-old is Director of Nursing for the ORBIS Flying Eye Hospital, which brings together dedicated eye care professionals and aviators to give the gift of sight to developing countries.

Onboard the refurbished DC-10 jet aircraft, local doctors, nurses and technicians from developing countries work alongside ORBIS's international medical team to exchange knowledge and improve their skills.

"It's an incredibly diverse role and on any given day I can be working on accreditation and policy development, as a nurse, flight attendant, or even loading cargo."

In the 48-seat classroom at the front of the plane, doctors give lectures, discussions and live broadcasts of surgical procedures being performed in the Flying Eye Hospital operating room.

In the two years since she got the job, Heather has been to India, Bangladesh, the Philippines, Oman, Nigeria, Uganda, China, Indonesia, Vietnam and more.

"I particularly love returning to places I have worked before and seeing how the skills we helped them develop have made such a big difference to their practice," she said.



Jean Madden

Realising the negative effects that lack of sleep and lying on concrete has on the physical and mental health of homeless people, ACU graduate Jean Madden came up with the Street Swag.

Made from lightweight waterproof canvas and a foam mattress, the swag can be folded into a bag, helping preserve the dignity of the homeless and acting as a deterrent to theft and violence.

In 2009, Jean beat actor Brad Pitt to win the prestigious INDEX design awards "people's choice" category for her invention.

In 2010, she was named Queensland Young Australian of the Year.

Jean who has both a Bachelor of Education (Primary) and Master of Arts (Theology) from ACU, said that more than 15,000 Street Swags have been distributed to those sleeping rough around Australia so far.

"The Street Swag is not about solving homelessness, but about keeping people alive for as long as possible. It's a great privilege to be able to help."



CAMPUSES

across Australia

ACU is the only university listed as a national institution by the official Universities Australia body.



BALLARAT CAMPUS

Ballarat is 125 kilometres west of Melbourne. The campus is located near Ballarat's commercial centre within easy reach of facilities, and offers programs in education, nursing, paramedicine and theology.



BRISBANE CAMPUS

Situated in the suburb of Banyo, the campus is set on 40 hectares of natural surroundings and offers programs in arts, business, education, exercise science, midwifery, nursing, paramedicine, physiotherapy, psychological science, social science, speech pathology and theology.



CANBERRA CAMPUS

Situated about five kilometres from the Canberra city centre, the campus offers programs in education, nursing, paramedicine, social work, theology.



MELBOURNE CAMPUS

The campus is conveniently located close to the cafés and galleries of Brunswick Street, and offers programs in arts, business, education, exercise science, international development studies, law, media, midwifery, nursing, occupational therapy, paramedicine, psychological science, social science, speech pathology, theology and visual arts and design.



NORTH SYDNEY CAMPUS

Just a five-minute train ride from the city centre over the Sydney Harbour Bridge, the campus offers programs in business, environmental science, information technology, nursing, occupational therapy, physiotherapy and speech pathology.



STRATHFIELD CAMPUS

The campus is located 15 kilometres west of the city centre on beautifully landscaped grounds and offers programs in arts, education, exercise science, international development studies, psychological science, social work, theology and visual arts and design.

Support

WHILE YOU STUDY



Academic skills support

Get help with your writing skills, time management, exam preparation, oral presentations and much more. The Academic Skills Unit conducts workshops and individual tutorials and provides the resources that all students need to be successful at university.

Visit: www.acu.edu.au/academicsskills



Bringing your campus to life

Campus Life supports the development of the ACU community through the facilitation of a rich, enjoyable, diverse and caring campus culture. Students, staff and the wider community are invited to engage in a vibrant and dynamic campus life through activities such as orientation, mentoring programs and clubs and societies.

Visit: www.acu.edu.au/campuslife



Free counselling

Free and confidential counselling is available to students with personal, study or work-related issues. Experienced staff provide a safe professional environment for students to discuss any areas of concern. The service also provides opportunities for students to develop general life skills to enhance their overall learning experience.

Visit: www.acu.edu.au/counselling



Disability support

The University is committed to ensuring that every student's ACU experience is free from discrimination and harassment. A range of services, support and advice is available through the Equity and Disability Unit to help students overcome barriers that could hinder their university education.

Visit: www.acu.edu.au/equityanddisability



Find your next job

We encourage all students to gain practical experience and develop professional contacts by undertaking internships and work placements in their chosen field while they study. Through the Career Development Service students can explore their career options, develop employable skills and prepare to transition into the workforce. Find out what's happening in the employment market, get help with job applications and interview skills, or search for your next job on ACU's CareerHub.

Visit: www.acu.edu.au/yourcareer

Office of Student Success

your success = our success

The Office of Student Success is where you can access most of the student support options we've listed below. They are an enthusiastic bunch of staff who are here to help you get the support you need so you can succeed in your studies and enjoy every day of your life at ACU. Want to find out more? Head to www.acu.edu.au/oss



Online support

Every ACU student has an email account and access to the online learning system. This allows you to submit assignments, get your marks, look up lecture notes, and view your academic progress. Some lectures are also recorded and available online, so you can either review the class or catch up if you missed it.



Orientation

Held at the start of the academic year, orientation is a great chance to learn your way around campus and meet new people. You'll get tips on organising your timetable and keeping up to speed with your classes, and find out more about your specific course requirements.

Visit: www.acu.edu.au/orientation



Transport

All ACU campuses are convenient for public transport, with easy access to buses or trains. There is also parking available at some locations if you prefer to drive, and our Strathfield and Brisbane campuses offer a free shuttle service to and from the train station.



Libraries

Our libraries are an important learning space for students, and a place to meet friends, work on group projects, and finish assignments. ACU libraries have extensive print and online collections, and offer a range of services including inter-campus borrowing, past exam papers and internet access.

Visit: www.acu.edu.au/library



Religious services

ACU is founded on a long history of commitment to truth in a spirit of freedom and service and is open to students of all beliefs. Through Campus Ministry, ACU works to bring this distinctive identity to life. Students have the opportunity to take part in World Youth Day (in 2011, more than 90 students travelled to Spain), explore the link between faith and reason, and attend talks by international speakers on the latest trends in theology and philosophy.

GO OVERSEAS + GET CREDIT

All ACU students have the opportunity to study overseas for one or two semesters as part of their degree. Participating in the Study Abroad and Student Exchange programs is an exciting and challenging way of broadening your horizons in a new environment. You also get the chance to improve your language skills and cultural understanding, increase your self confidence, and gain career opportunities.

The University has exchange agreements with more than 60 institutions all over the world, from Turkey, Chile and Mexico, to Germany, Sweden and the United States.

There are a variety of financial assistance programs available for students who wish to study overseas, including a grant of up to \$2,500 towards your airfare.

For more information on ACU's Study Abroad and Exchange programs visit www.acu.edu.au/internationalexchange

Three of the many ACU international programs...



EMIL JOSEF
Bachelor of
Exercise
Science



STUDY ABROAD & EXCHANGE

"I'd always wanted to live in the United States for a little while – to experience college life and sports, and make connections in exercise science – so I spent a semester last year at the University of Massachusetts in Boston.

I met people from all over the world, and going to Red Sox and Celtics games

was amazing. I also met a lot of people in my industry who are interested in my planned return to Boston.

Spending a semester at university overseas is a life-changing experience. It forces you to become independent and

grow emotionally, socially and spiritually. There are plenty of ups and downs, but by the end of it you have met so many amazing people and accomplished so many things – it was by far the best decision I've ever made."

ACU GAP YEAR

ACU recognises that significant, transformative learning can often take place outside the classroom. The Action, Learning and Reflection in the Gap Year unit is now available to all students, allowing them to integrate social justice actions, learning, and reflection in the

context of a gap year-style community engagement placement, either locally or overseas.

Students undertaking this unit will complete a three to 12-month placement with a community agency.

For more information please contact ACU's Institute for Advancing Community Engagement (IACE) on (02) 9701 4346 or iace@acu.edu.au

STEVE SASSEN
Bachelor of
Visual Arts and
Design



Disney
International
PROGRAMS
A World of Opportunity

"I spent a semester in the United States last year after I was accepted for an internship at the *Walt Disney World Resort* in Florida.

Meeting and networking with so many people from around the globe was an amazing experience and helped me grow in all aspects of my life. I never thought that I would be brave enough to step out of my comfort zone, and I now feel better prepared for whatever the world has to throw at me.

Being a visual arts student, I try to be creative everywhere I go, and by completing Disney's Creativity and Innovation course in Florida I feel as though I have a better understanding of my own creativity and how to apply it to my work.

It was the time of my life."

ACU: BOOKS AND MORE

JOIN A TEAM OR CLUB

ACU has a long tradition of supporting organisations run by students, for students, that are stimulating, fun and a great way to meet new people.

If sport is your thing, there is a wide range of teams on each campus which compete in everything from oztag and netball, to beach volleyball, basketball and badminton.

Each year students get the chance to represent ACU at the Australian University Games and University Championship Snow Sports, or battle it out between the six ACU campuses at ACU Games.

If business is what interests you, the Students in Free Enterprise (SIFE) use their economics, finance and business skills to deliver community outreach programs. A global non-profit organisation, SIFE is run at more than 1,700 universities in 42 countries.

Then there are the performing arts clubs, choirs and ACU Wired – a national radio station run by staff and students from a recording studio on each campus.

If you can't find a club dedicated to your particular passion or hobby, then why not start your own? ACU encourages the creation of new clubs and societies, and is always looking for ways to help bring your campus to life.



Photo: Matthew Duchesne, Milk & Honey / Photography (pool table)

INDIGENOUS SUPPORT

ACU is committed to access to education for Indigenous Australians, and received the maximum five-star rating for Indigenous Participation in *The Good Universities Guide* for 2012.

Indigenous higher education units on each campus focus on the provision of academic, personal and cultural support for Aboriginal and Torres Strait Islander students.

Flexible undergraduate courses are also available, allowing Indigenous students to live and work in their own communities, while travelling to Sydney or Brisbane to complete the face-to-face component of their course.

Ongoing assignments, further study and online learning are completed throughout the year from their home base.

For more information visit www.acu.edu.au/indigenous



CHANTELLE STENNER
BACHELOR OF NURSING

"ACU is a not just a great place to study, but a great place to meet new people. There is a huge range of cultural diversity and getting to know other students from different cultures and learn about their traditions has been a highlight for me.

There are also lots of social activities to get involved in. I played in the Indigenous All Stars team at ACU Games and we had a great time - I'm looking forward to doing it again next year!

I'm really enjoying my course and glad I decided to study at ACU. It has an excellent learning environment, great support, and is welcoming to everyone."



ACU NATIONAL STUDENT ASSOCIATION

ACUNSA is the national representative body for students on campus. It comprises the Presidents of each of the six individual Student Associations and the Student Senator.

ACUNSA manages the Student Advocacy Service, and aims to promote the welfare and interests of students, ensure they have a voice at executive level and generate an active university social life.

ACU students are represented on their local campus by student associations and elected student leaders.

ACUNSA runs a range of events and programs throughout the year such as ACUmates, which bridges the gap between international and Australian students, lunchtime barbecues, harbour cruises and ACU Games, an annual inter-campus sporting event.

For more information visit www.acunsa.com.au



Apply in

4

easy steps

STEP 1

CHOOSE THE COURSE YOU WOULD LIKE TO STUDY

- » Read through ACU's 2013 Undergraduate Guide
- » Go to www.acu.edu.au/courses
- » Arrange a campus tour by emailing campustour@acu.edu.au
- » Attend an information session at one of our campuses
- » If you have any questions, phone 1300 ASK ACU (1300 275 228) or email futurestudents@acu.edu.au

To be eligible for entry to ACU undergraduate courses you must have completed your studies and gained an OP (Queensland), ATAR (NSW, ACT, VIC), or completed an equivalent qualification such as a UniAccess course, TAFE course or STAT test, or met the criteria for direct entry into the University.

STEP 2

CHECK OUT THE SCHOLARSHIPS OFFERED TO FIRST-YEAR STUDENTS

ACU offers a number of scholarships, bursaries and prizes funded by the University Foundation, the Commonwealth Government and various benefactors. Some are open to all students; others are restricted to students in particular courses or at particular campuses. They are awarded at the discretion of the University and are subject to available funding. For more information see page 78 or visit www.acu.edu.au/scholarships

STEP 3

CONSIDER ACU'S DIRECT-ENTRY PROGRAMS AND FIND OUT IF YOU ARE ELIGIBLE FOR ACCESSACU BONUS ENTRY POINTS

ACU offers a range of direct entry options for future students including the Early Achievers' Program and Elite Athletes' Program. You might also be eligible for bonus entry points through accessACU. For more information visit www.acu.edu.au/access, call 1300 ASK ACU (1300 275 228) or email futurestudents@acu.edu.au

STEP 4

APPLY THROUGH THE RELEVANT CENTRE

Queensland Tertiary Admissions Centre (QTAC)
- www.qtac.edu.au

University Admissions Centre (UAC) for NSW and ACT students
- www.uac.edu.au

Victorian Tertiary Admissions Centre (VTAC)
- www.vtac.edu.au

If you have any questions about your ACU application, phone 1300 ASK ACU (1300 275 228) or email futurestudents@acu.edu.au

OP conversion table*

ATAR	99	98	96	94	92	90	87	85	82	80	-	75	-	70	-	65	-	60	55	-	50	-	45	40	30
OP	1	2	3	4	5	6	7	8	9	10	11	12	13	14	15	16	17	18	19	20	21	22	23	24	25

*The conversion table above is intended as a comparative guide for the conversion of Year 12 results across Australia. It is intended as an approximate guide only.

TAILOR YOUR DEGREE

Whether you know exactly which subjects you want to study, or you need a little time to work it out, ACU has a flexible system which will benefit you.

For arts and business degrees, if you don't have an exact profession in mind but know what you're interested in, you can start studying your chosen subject straight away, along with additional subjects to expand your breadth of knowledge.

If you want to study for a degree that allows you to practise in a particular profession, such as a teacher, nurse or physiotherapist, then your program will concentrate on the core subjects connected to your degree from the start. This sort of degree offers less flexibility as it must satisfy the requirements of the relevant professional organisation, but you do still get to choose some electives that interest you.

Most of the three-year undergraduate degrees at ACU comprise 24 units of study, totalling 240 credit points.

8
MAJOR UNITS

16
MAJOR UNITS

+

or

+

4
MINOR UNITS

8
DOUBLE MAJOR UNITS

+

4
MINOR UNITS

Units

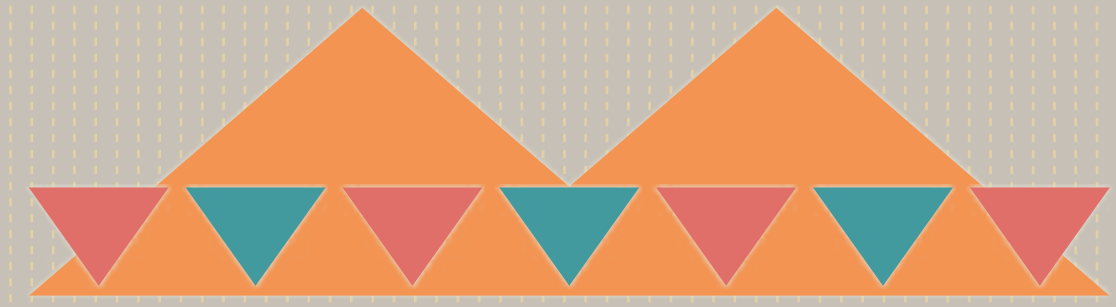
are the classes you study in a semester. There are usually four units per semester, 12 weeks in each semester, and two semesters a year.

Major

is your chosen area of in-depth study or specialisation. Once you have selected your major, you must complete a defined set of units, to complete your course. For some courses the degree major is explicit in the course title, for example Bachelor of Nursing, whilst in other courses you will need to select a major study from those available within the degree.

Minor

is a recognised set of units which you may be required to complete as part of your course. Minors are designed to complement your major course of study and intended career path, or can be something that interests you personally.



OUR
ACU
your courses



COURSE LIST

ARTS	PAGE
Bachelor of Arts	20
Bachelor of Arts (Honours)	20
Bachelor of Arts (Business and Communication Studies)	22
Bachelor of Arts (Psychology)	22
Bachelor of Arts and Economics	23
Bachelor of Media Communication	24
DUAL DEGREES	24
PATHWAY	
Certificate in Liberal Studies	23

BUSINESS	PAGE
Bachelor of Business Administration	36
Bachelor of Business Information Systems	37
Bachelor of Business Information Systems (Honours)	37
Bachelor of Commerce	38
Bachelor of Commerce (Honours)	38
Bachelor of Human Resource Management	39
Bachelor of Human Resource Management (Honours)	39
Bachelor of Information Technology	40
Bachelor of Marketing	40
Bachelor of Marketing (Honours)	40
DUAL DEGREES	41
PATHWAYS	
Associate Degree in Business Administration (Indigenous Studies)	36
Certificate in Business Information Systems	37
Certificate in Commerce	38

EDUCATION	PAGE
Bachelor of Education (Early Childhood and Primary)	46
Bachelor of Education (Primary)	49
Bachelor of Education (Primary) (Indigenous Studies)	53
Bachelor of Inclusive Education and Disability Studies	48
Bachelor of Teaching (Early Childhood)	46
DUAL DEGREES	50
PATHWAYS	
Advanced Certificate in Educational Studies	53
Associate Degree in Early Childhood Education	46
Associate Degree in Inclusive Education and Disability Studies	48
Associate Degree in Indigenous Education	53
Certificate in Educational Studies	53

ENVIRONMENTAL SCIENCE	PAGE
Bachelor of Environmental Science	25
Bachelor of Environmental Science (Honours)	25

HEALTH SCIENCES	PAGE
Bachelor of Applied Public Health	61
Bachelor of Exercise and Health Science	56
Bachelor of Exercise and Health Science (Honours)	56
Bachelor of Exercise and Sports Science	57
Bachelor of Exercise and Sports Science (Honours)	57
Bachelor of Midwifery	57
Bachelor of Midwifery (Honours)	57
Bachelor of Nursing	62
Bachelor of Nursing (Honours)	62
Bachelor of Nursing (Mental Health)	63
Bachelor of Nursing (Practice Leadership)	62
Bachelor of Occupational Therapy	58
Bachelor of Paramedicine	58
Bachelor of Physiotherapy	60
Bachelor of Speech Pathology	59
DUAL DEGREES	63

INTERNATIONAL DEVELOPMENT STUDIES AND GLOBAL STUDIES	PAGE
Bachelor of International Development Studies	29
DUAL DEGREES	29

LAW	PAGE
Bachelor of Law	66
DUAL DEGREES	66

PSYCHOLOGY AND SOCIAL SCIENCES	PAGE
Bachelor of Counselling	30
Bachelor of Psychological Science	31
Bachelor of Social Science	31
Bachelor of Social Science (Honours)	31
Bachelor of Social Science (Psychology)	32
Bachelor of Social Work	32
Bachelor of Social Work (Honours)	32
Bachelor of Youth Work	33
DUAL DEGREES	33

THEOLOGY AND PHILOSOPHY	PAGE
Bachelor of Theology	70
Bachelor of Theology (Honours)	70
DUAL DEGREES	71
PATHWAYS	
Certificate in Theology	70
Diploma in Theology	70

VISUAL ARTS AND DESIGN AND CREATIVE ARTS	PAGE
Bachelor of Creative Arts	26
Bachelor of Visual Arts and Design	26
Bachelor of Visual Arts and Design (Honours)	26

**ALEX LEHOURS
GRADUATE,
BACHELOR OF
VISUAL ARTS AND
DESIGN**

"ACU provided me with the essential tools and skill set to get a job in design, and from there other avenues opened up. I'm now fortunate to be working as a freelance illustrator and designer.

I was a contestant in the 2011 Secret Wars Competition, have had work displayed at National Gallery of Victoria and Ambush Gallery, and featured in the Outpost Project at Cockatoo Island in Sydney last year.

My lecturers at ACU were extremely skilled, and I had the opportunity to do some great work experience during my studies. The art facilities are excellent and were always accessible to students."



why study
**ARTS &
SCIENCES**
at acu?

ACU | arts and sciences

STUDY OVERSEAS:

As an ACU student, you have the opportunity to study for one or two semesters overseas as part of your degree, including the Global Studies dual degrees. The University has partner agreements with more than 60 institutions all over the world.

DUAL DEGREES:

Combining arts with another degree is a great way to broaden your knowledge base, explore your interests and tailor your education for better employment options.

EMPLOYMENT OUTCOMES:

Degrees in arts and social sciences teach you skills that are applicable across a wide range of fields and are highly sought-after by employers in all sectors of the workforce.

CHOICE:

ACU offers a broad range of arts subjects, with a wide choice of undergraduate majors to choose from at each campus.

LEARN FROM THE PROS:

ACU arts and social sciences courses draw upon the expertise of the University staff who are active practitioners in their fields – complemented by visiting academics and special guests who are experts in their chosen professions.

ARTS



MATTHEW WILSON
BACHELOR OF ARTS

"I've found ACU helps students overcome personal barriers to complete their studies. It's a mission-focused university that encourages and accepts people from all backgrounds and nationalities. I feel at home at ACU. I'm majoring in drama and my course is exactly what I need to achieve my goals."

BACHELOR OF ARTS

Campus: Brisbane, Melbourne, Strathfield

Duration: 3 yrs FT (or equivalent PT)

You will gain a broad understanding and appreciation of the humanities, arts and social sciences that enrich our culture. As an articulate and innovative professional, you will be valued for your ability to think systematically and critically; to gather and evaluate evidence from many sources; to communicate clearly; and to apply ethical principles to decision-making.

To enhance your university experience, we encourage them to consider approved study overseas as part of their course. You can build a general arts degree to suit your developing interests and expertise, from the liberal arts fields (see the table on page 21) or choose to specialise in business and communication studies, creative arts or psychology.

Honours

BACHELOR OF ARTS (HONOURS)

Campus: Brisbane, Melbourne, Strathfield

Duration: 1 yr FT (or equivalent PT)

The Honours course in selected disciplines is available to high-achieving students and includes the writing of a thesis along with coursework. You will develop your research skills and build on the knowledge in your major area of study. Upon completion, you will be able to demonstrate knowledge and skills that enhance your employment prospects or equip you to pursue further postgraduate study.

SAMPLE PROGRAM MAP - BACHELOR OF ARTS (TWO MAJORS)

See the table on the right to view the major and minor options.

Year 1				
Semester 1	Major 1	Major 2	Minor or Elective	Elective
Semester 2	Major 1	Major 2	Minor or Elective	Core
Year 2				
Semester 1	Major 1	Major 2	Minor or Elective	Core
Semester 2	Major 1	Major 2	Minor or Elective	Elective
	Learning in the Community			
Year 3				
Semester 1	Major 1	Major 1	Major 2	Major 2
Semester 2	Major 1	Major 1	Major 2	Major 2

COURSE STRANDS (SPECIALISATIONS, MAJORS, MINORS AND ELECTIVES)

Specialisation: An area of special or focused study or sub-discipline within a course that is required on the student's testamur and transcript. Normally a specialisation consists of not less than one half of the total credit points required.

Major: 80 credit points in prescribed units in one discipline or approved interdisciplinary area, normally including at least 10 credit points at introductory level and at least 60 credit points at advanced level.

Minor: 40 credit points in prescribed units in one discipline or approved interdisciplinary area, normally including at least 10 credit points at introductory level and at least 20 credit points at advanced level.

Sequence	Brisbane	Melbourne	Strathfield
Asian Studies	Major		
Australian Studies	Major		Minor
Business and Communication Studies			Specialisation
Business Studies	Major	Major	Major ¹
Creative Arts	Specialisation	Specialisation	
Communication	Minor	Minor	Minor
Computing			Minor
Drama	Major	Major	Minor
Economics			Major
Education	Minor	Minor	Minor
Family Studies		Minor	
Geography			Major
Gender Studies	Minor		
History	Major	Major	Major
Indigenous Studies			Minor
Leisure Studies	Minor		
Literature	Major	Major	Major
Mathematics		Major	Major
Media		Major	
Music	Major	Major	
Philosophy	Major	Major	Major
Politics		Major	
Psychology (APAC Accredited) ²	Specialisation	Specialisation	Specialisation
Psychology ³	Major	Major	Major
Science Studies		Minor	
Sociology	Major	Major	Elective
Study of Religions	Minor	Minor	Minor
Technology ⁴			Major
Theological Studies	Major	Major	Major
Visual Arts	Major/Specialisation	Major/Specialisation	Major/Specialisation
Youth Work		Minor	

These sequences are subject to change. Sequences offered are dependent upon sufficient student numbers.

1. Students are required to attend North Sydney Campus to complete selected units.
2. 120cp Psychology sequence is accredited by the Australian Psychology Accreditation Council (APAC).
3. 80cp Psychology major is not an APAC-accredited sequence.
4. Available only to students enrolled in the Bachelor of Teach/Bachelor of Arts (Technology) who study a sequence of 12 units in Design and Technology which is recognised as equivalent to a major and minor in Technology in the Bachelor of Arts.

BACHELOR OF ARTS (BUSINESS AND COMMUNICATION STUDIES)

Campus: Strathfield

Duration: 3 yrs FT (or equivalent PT)

This course is tailored to the needs of the contemporary business environment, with a focus on business studies, economics and communication.

To obtain a specialisation in business and communication studies, you must complete one major and two minors from the following sequences:

Major: Business Studies* or Economics

Minor 1: Communication

Minor 2: Business Studies*; Computing; Economics; Mathematics; Psychology

* If Business Studies is not the selected major, then a minor in Business Studies must be completed.

BACHELOR OF ARTS (PSYCHOLOGY)

Campus: Brisbane, Melbourne, Strathfield

Duration: 3 yrs FT (or equivalent PT)

The course is designed to produce knowledgeable, articulate, innovative graduates skilled in research, logical thought, clear expression and the application of ethical principles to decision-making. Students complete the accredited psychology sequence plus an arts minor and electives in the areas of your choice. Career pathways are available in a wide range of organisations.

Accreditation and career progression

The specialisation is accredited by the Australian Psychology Accreditation Council (APAC) as a three-year sequence

of study in psychology. Graduates who complete the accredited specialisation in psychology with appropriate grades will be eligible to proceed to fourth year studies in psychological science – the next step for career preparation to become a professional psychologist. Students may also be interested in the Bachelor of Psychological Science program (see page 31) and the Bachelor of Social Science (Psychology) (see page 32).

SAMPLE PROGRAM MAP - BACHELOR OF ARTS (BUSINESS AND COMMUNICATION STUDIES)

Option 1: A major in Business Studies, a minor in Communication and a minor in Computing, Economics, Mathematics or Psychology; or

Option 2: A major in Economics, a minor in Communication and a minor in Business Studies.

Year 1				
Semester 1	Business Studies or Economics major	Communication minor	Minor 2	Elective
Semester 2	Business Studies or Economics major	Communication minor	Minor 2	Core
Year 2				
Semester 1	Business Studies or Economics major	Communication minor	Minor 2	Core
Semester 2	Business Studies or Economics major	Communication minor	Minor 2	Elective
	Learning in the Community			
Year 3				
Semester 1	Business Studies or Economics major	Business Studies or Economics major	Elective	Elective
Semester 2	Business Studies or Economics major	Business Studies or Economics major	Elective	Elective

Note: Electives are chosen from first year units offered in the Bachelor of Arts.

SAMPLE PROGRAM MAP - BACHELOR OF ARTS (PSYCHOLOGY)

Year 1				
Semester 1	Minor	Psychology A	Elective	Program Core Unit
Semester 2	Minor	Psychology B	Research Design and Statistics I	Elective
Year 2				
Semester 1	Minor	Lifespan Development	Biological Psychology	Research Design and Statistics II
Semester 2	Minor	Abnormal Psychology	Learning and Perception	Program core unit
	Learning in the Community			
Year 3				
Semester 1	Elective	Elective	Research Design and Statistics III	Individual Difference and Assessment
Semester 2	Elective	Elective	Cognitive Psychology	Social Psychology

CAREER OPTIONS FOR ARTS DEGREES

Career options include: business administration, government organisation and policy development, public relations, author, researcher or market researcher, pathway to teaching, communications professional in broadcast, online or print media, public relations or publishing, charity, heritage and international affairs.

PATHWAYS TO ALL ARTS COURSES

CERTIFICATE IN LIBERAL STUDIES

Campus: Brisbane, Strathfield, Melbourne

Duration: 0.5 yr FT (or equivalent PT)

This is a non-award Uni Access-Australia program that integrates the study of Australian society with a wide range of other subjects. You can choose to study either a selection of units for personal development or a series of units that provide credit towards a variety of undergraduate courses, including the Bachelor of Arts and Bachelor of Education.

BACHELOR OF ARTS AND ECONOMICS

Campus: Strathfield

Duration: 3 yrs FT (or equivalent PT)

This multidisciplinary course combines studies in economics with humanities, business or social sciences. Students undertake compulsory units in microeconomics, macroeconomics, development economics, economic policy analysis, the global economy, labour economics and applied

econometrics. Students also select an additional major in business studies, geography, history, literature, mathematics, philosophy, psychology or theological studies. Graduates with skills in both arts and economics are in demand by employers in the private and public sectors in a variety of roles. The course is designed to equip graduates to make informed judgements about issues and policies and to participate in socially responsible decision-making in the business and wider communities.

Career options

Depending on their chosen majors, graduates can pursue a range of careers within finance or commodities markets, business, economic forecasting, economic policy development, banking, insurance, tourism, journalism, teaching, government, industry and politics.

SAMPLE PROGRAM MAP - BACHELOR OF ARTS AND ECONOMICS

See the table on page 21 to view the major and minor options.

Year 1				
Semester 1	Economics major Microeconomics 1	Elective	Arts minor or elective	Arts major
Semester 2	Economics major Macroeconomics 1	Elective	Arts minor or elective	Arts major
Year 2				
Semester 1	Economics major Microeconomics 2	Economics 4: The Global Economy	Arts minor or elective	Arts major
Semester 2	Economics Macroeconomics 2	Program core Unit	Arts minor or elective	Arts major
	Learning in the Community			
Year 3				
Semester 1	Economics major Applied Econometrics	Economics major Economics Policy Analysis	Arts major	Arts major
Semester 2	Program Core Unit Development Economics	Economics major Economics Policy Analysis	Arts major	Arts major

Note: See Course Strands table page 21 for the list of arts majors available on the Strathfield Campus; electives are chosen from units offered in the Bachelor of Arts. Students may choose to study electives in the same discipline as the minor to complete a major.

BACHELOR OF MEDIA COMMUNICATION

Campus: Melbourne
Duration: 3 yrs FT (or equivalent PT)

This course is a practice- and industry-oriented program that provides skills suitable for many careers. You will work with a range of media including video, radio and print from both theoretical and practical perspectives. You will have the opportunity to use these skills to contribute to the wider campus and community and to play an active part in shaping public discussion and debate.

The course electives are drama, literature, history, marketing, music, politics and visual arts, opening up a wide variety of career paths including studio-based units such as radio production and screen production.

Professional experience

Media Communication students are encouraged to engage with industry and industry models. In third year, all students must undertake an internship that allows them to gain experience in their industry of choice.

Career options

Skills in media and communication are increasingly becoming essential for most career choices. Being able to communicate well with new media is fast becoming integral in all industries. Potential careers include television and film production, radio production, journalism and related new media communication, or public relations and event management.

SAMPLE PROGRAM MAP - BACHELOR OF MEDIA COMMUNICATION

See the table on page 21 to view the major and minor options.

Year 1				
Semester 1	Economics major Microeconomics 1	Elective	Arts minor or elective	Arts major
Semester 2	Economics major Microeconomics 1	Elective	Arts minor or elective	Arts major
Year 2				
Semester 1	Economics major Microeconomics 2	Economics major The Global Economy	Arts minor or elective	Arts major
Semester 2	Economics major Microeconomics 2	Program core unit	Arts minor or elective	Arts major
	Learning in the Community			
Year 3				
Semester 1	Economics major Applied Econometrics	Economics major Economics Policy Analysis	Arts major	Arts major
Semester 2	Program Core Unit Development Economics	Economics major Labour Economics	Arts major	Arts major

Note: See Course Strands table page 21 for the list of arts majors available on the Strathfield Campus; Electives are chosen from units offered in the Bachelor of Arts. Students may choose to study electives in the same discipline as the minor to complete a major.

Dual degrees

Combine a Bachelor of Arts degree with another ACU degree and gain two valuable qualifications in a related and complementary discipline.

BACHELOR OF ARTS/ BACHELOR OF COMMERCE

Campus: Brisbane, Melbourne,
North Sydney/Strathfield
Duration: 4 yrs FT (or equivalent PT)

BACHELOR OF ARTS/ BACHELOR OF GLOBAL STUDIES

Campus: Melbourne, Strathfield
Duration: 4 yrs FT (or equivalent PT)

Note: For more information, go to page 29.

BACHELOR OF ARTS/ BACHELOR OF LAWS

Campus: Melbourne
Duration: 5 yrs FT (or equivalent PT)

Note: For more information, go to page 66.

BACHELOR OF TEACHING/ BACHELOR OF ARTS

Campus: Brisbane, Strathfield,
Melbourne
Duration: 4 yrs FT (or equivalent PT).

BACHELOR OF ARTS/ BACHELOR OF SOCIAL WORK

Campus: Brisbane, Strathfield
Duration: 4 yrs FT (or equivalent PT)

Note: For more information, go to page 33.

ENVIRONMENTAL SCIENCE

LEROY GONSALVES

GRADUATE, BACHELOR OF ENVIRONMENTAL SCIENCE (HONOURS)

"My course included some great field trips, including one to the coral reefs of Fiji which gave me invaluable hands-on experience.

The networks that ACU has built with key environmental agencies allowed us to access a range of tools for our research needs, and many top experts in the field."

BACHELOR OF ENVIRONMENTAL SCIENCE

Campus: North Sydney

Duration: 3 yrs FT (or equivalent PT)

The impacts of climate change are now a part of everyday life. This course will enable you to monitor and manage processes that affect the environment. You will build practical competencies in the scientific, social, ethical and legal dimensions of the practice of environmental science.

Professional experience

You will undertake fieldwork to gain valuable practical experience.

Accreditation

You will be eligible for membership with the Environment Institute of Australia. If you choose to undertake a Graduate Diploma in Education (Secondary), you may also apply for accreditation to teach science in NSW schools.

Career options

Graduates can pursue a range of careers, including environmental auditor, environmental consultant, sustainability officer, environmental tourism officer, policy officer, researcher, and water resource scientist.

Entry requirements

Completion of Year 12 (or equivalent) with English proficiency. Admission rules apply, visit www.acu.edu.au/courses

Honours

BACHELOR OF ENVIRONMENTAL SCIENCE (HONOURS)

Campus: North Sydney

Duration: 1 yr FT (or equivalent PT)

The Honours course includes writing a thesis together with coursework, and prepares you for a research-oriented career. You study fields such as marine and coastal ecology and undertake various fieldwork projects.

SAMPLE PROGRAM MAP - BACHELOR OF ENVIRONMENTAL SCIENCE

Year 1				
Semester 1	Environmental Issues	Biodiversity	Fundamentals of Chemistry	Earth Science
Semester 2	Principles of Ecology	Physical Chemistry	Introduction to Data Analysis	Soils and Water
Year 2				
Semester 1	Organic Chemistry and Biochemistry	Environmental Legislation and Planning	Landscape Hydrology and Management	Environmental Data Analysis
Semester 2	Vegetation Ecology	The Australian Environment: Values and Ethics	Geographic Information Systems	Environmental Chemistry
	Learning in the Community			
Year 3				
Semester 1	Marine and Coastal Ecology	Microbiology and Biotechnology	Animal Ecology	Applied Studies 1: Occupational Health and Safety
Semester 2	Ecotoxicology	Conservation and Sustainability	Environmental Impact Assessment	Applied Studies 2: Professional Development

Note: All units are core units.



VISUAL ARTS & DESIGN & CREATIVE ARTS

ELEANOR HOSE BACHELOR OF VISUAL ARTS AND DESIGN

"I wanted to develop my skills in 2D and 3D animation, as well as drawing, and this course offered both visual arts and media units. As part of my degree I worked at the Australian Centre for the Moving Image, where I made valuable contacts, helped out with major exhibits, and was fortunate enough to secure a permanent job."

BACHELOR OF VISUAL ARTS AND DESIGN

Campus: Melbourne, Strathfield
Duration: 3 yrs FT (or equivalent PT)

This course provides a broad foundation in visual arts and design, and allows you to study an exciting mix of studio-based art, graphic design, and art and design history and theory. You will gain practical experience in the ACU art galleries.

Accreditation

You may be eligible for accreditation with; Australian Graphic Design Association; Australian Print Council; Australian Sculptors Association; International Council of Museums; International Association of Art; National Association for the Visual Arts.

Professional experience

The course includes an internship.

Career options

Graduates can pursue a range of careers, including arts administrator, art or design teacher, visual merchandiser, illustrator, curator, painter, photographer, printmaker, and creative director.

Honours

BACHELOR OF VISUAL ARTS AND DESIGN (HONOURS)

Campus: Melbourne, Strathfield
Duration: 1 yr FT (or equivalent PT)

The Honours course is available to eligible graduates and external applicants and takes a research-based approach to studio art, graphic design and art and design history and theory.

BACHELOR OF CREATIVE ARTS

Campus: Brisbane, Melbourne
Duration: 3 yrs FT (or equivalent PT)

This course offers a wealth of subjects for students who wish to focus on the creative arts. Students must complete either two Creative Arts majors or one major and two minors in the following: Communication*⁺; Drama; Literature; Media*; Music; and Visual Arts.

* Melbourne Campus only.

+ Minor only.



The prerequisite to all Visual Arts & Design and Creative Arts courses is completion of Year 12 (or equivalent) with English proficiency. Admission rules apply, visit www.acu.edu.au/courses

SAMPLE PROGRAM MAP - BACHELOR OF VISUAL ARTS AND DESIGN

Year 1					
Semester 1	Art and Design History and Theory 1	2D Studies 1	3D/4D Object Design 1	Graphic Design 1	Introduction to Media Production*
Semester 2	Art and Design History and Theory 2	2D Studies 2	3D/4D Object Design 2	Graphic Design 2	Screen Production 1*
Year 2					
Semester 1	Art and Design History and Theory 3	2D Studies 3	3D/4D Object Design 3	Graphic Design 3	2D Computer Animation 1*
Semester 2	Art and Design History and Theory 4	2D Studies 4	3D/4D Object Design 4	Graphic Design 4	3D Computer Animation 1*
Year 3					
Semester 1	Introduction to Ethics	Professional Practice	Self-Directed Studies 1	Major 2	
Semester 2	Art and Spirit	Internship	Self-Directed Studies 2	Major 2	

Note: Subjects can change. *Offered on Melbourne Campus only.

INTERNATIONAL DEVELOPMENT STUDIES & GLOBAL STUDIES



ANNABEL GUTHRIE

"I spent a month in East Timor, teaching leadership, health, and life skills to more than 400 children and young people through a community soccer program. There is nearly 100 per cent youth unemployment in the area, so we aimed to give them something to look forward to, something to be engaged in, and a sense of belonging. I loved my time in East Timor and as well as counting towards my course mark, it really put my life in perspective."

ACU | arts and sciences

TACKLING THE BIG QUESTIONS:

The phenomenon of globalisation affects economies, lifestyles, societies and politics. International Development Studies and Global Studies degrees will give students the skills and knowledge to make a real difference on a national, and international, scale.

Entry requirements

Completion of Year 12 (or equivalent) with English proficiency. Admission rules apply, visit www.acu.edu.au/courses

DUAL DEGREES:

The Bachelor of Global Studies is offered only as a dual degree program with Arts, Business Administration, Commerce, Law and Theology degree programs to provide students with in-depth skills and knowledge to engage effectively in the global workplace.

INTERNSHIPS AND STUDY OVERSEAS:

Students are encouraged to undertake an internship or study abroad experience to enhance their studies and interests.

EMPLOYMENT OUTCOMES:

Bachelor of International Development Studies graduates will be well prepared for a variety of career options in non-government organisations; the United Nations framework; and various aid and humanitarian organisations.

Bachelor of Global Studies graduates, with their skills and knowledge from their related ACU dual degree, are positioned for careers in government; international law and business sectors; multi-national corporations; and humanitarian organisations with global perspectives and reach.

Dual degrees

**BACHELOR OF ARTS/
BACHELOR OF GLOBAL STUDIES**

**BACHELOR OF BUSINESS
ADMINISTRATION/
BACHELOR OF GLOBAL STUDIES**

**BACHELOR OF COMMERCE/
BACHELOR OF GLOBAL STUDIES**

**BACHELOR OF LAW/
BACHELOR OF GLOBAL STUDIES***

**BACHELOR OF THEOLOGY/
BACHELOR OF GLOBAL STUDIES**

Campus: Melbourne (all components), North Sydney (Business Administration, Commerce components), Strathfield (Global Studies, Arts, Theology components)

Duration: 4 yrs FT (or equivalent PT);
5 yrs FT (or equivalent PT) – Bachelor of Law dual degree*

Students enrolling in double degrees which include the Bachelor of Global Studies will have the opportunity to learn about the social, political, cultural, environmental and economic changes that are shaping the world and combine this knowledge with a period of study abroad at one of more than 60 ACU partner institutions around the world.

* Melbourne Campus only in 2013.

SAMPLE PROGRAM MAP - BACHELOR OF GLOBAL STUDIES DUAL DEGREE (4 YRS FT)

Year 1				
Semester 1	Arts/BBA/Commerce/Theology (Degree 1) units	Degree 1 units	Degree 1 units	Degree 1 units
Semester 2	Degree 1 units	Degree 1 units	Degree 1 units	Degree 1 units
Year 2				
Semester 1	Global Change and Development	Global Studies elective unit 1	Degree 1 units	Degree 1 units
Semester 2	Global Health	Environmental Sustainability	Degree 1 units	Degree 1 units
	Learning in the Community			
Year 3				
Semester 1	Global Studies elective unit 2	Global Studies elective unit 3	Degree 1 units	Degree 1 units
Semester 2	Study Abroad/Internship/International exchange			
Year 4				
Semester 1	World Politics and Justice	Global Studies elective unit 4	Degree 1 units	Degree 1 units
Semester 2	Degree 1 units	Degree 1 units	Degree 1 units	Degree 1 units

Note: For more information, visit www.acu.edu.au/globalstudies

BACHELOR OF INTERNATIONAL DEVELOPMENT STUDIES

Campus: Melbourne, Strathfield
Duration: 3 yrs FT (or equivalent PT)

This course addresses the need for the empowerment of people in developing countries, equipping students with the necessary skills to work for organisations

that enhance lives. The program covers issues concerning the developing world from a values-based perspective, and provides hands-on experience in an international humanitarian or development program, as well as management units.

You will study international human rights, the impact of globalisation, refugees

and forced migration, peace-building, development economics, and strategic management.

Professional experience

Students will work overseas in a development or humanitarian program directly relevant to their studies.

SAMPLE PROGRAM MAP - BACHELOR OF INTERNATIONAL DEVELOPMENT STUDIES

Year 1				
Semester 1	Introduction to International Development Studies	Management and People	Microeconomics 1	Human Geographies of Globalisation
Semester 2	Global Health	Introduction to International Human Rights Law and Practice	Environmental Sustainability	Our World: Community and Vulnerability
Year 2				
Semester 1	Global Change and Development	Organisational Behaviour	Elective	Understanding Self and Society: Contemporary Perspectives
Semester 2	Humanitarian and Development Work: a Dignity-based Approach	Refugees and Forced Migration	Development Economics	Preparation for immersion experience
	Learning in the Community			
Year 3				
Semester 1	Research Methodologies for Development Projects		Immersion experience	
Semester 2	Advocacy and Policy Development	Strategic Management	Peace and Development	Development Alternatives: Fair Trade

Note: For more information, visit www.acu.edu.au/internationaldevelopment

PSYCHOLOGY & SOCIAL SCIENCES

The prerequisite to all Psychology & Social Sciences courses is completion of Year 12 (or equivalent) with English proficiency. Admission rules apply, visit www.acu.edu.au/courses



ERIN VAUGHAN
GRADUATE, BACHELOR OF SOCIAL WORK/BACHELOR OF SOCIAL SCIENCE

"I work as a social worker in the maternity and neonatology unit at the Royal Brisbane and Women's Hospital, supporting new mothers during pregnancy and providing expertise in areas such as bereavement, domestic violence and child protection. ACU helped me get the job I always wanted – challenging but incredibly rewarding."

BACHELOR OF COUNSELLING

Campus: Brisbane, Melbourne
Duration: 3 yrs FT (or equivalent PT)

This course provides the theoretical and practical skills to enable graduates to engage effectively in counselling in a range of professional fields. The program offers you an opportunity to think critically, informed by your study and your own personal development, of the importance of counselling interventions in a complex and pluralistic society.

Accreditation

Students who complete the three-year Bachelor of Counselling degree will normally undertake a further year of study to complete the Postgraduate Diploma in Counselling. Bachelor of Counselling/Postgraduate Diploma in Counselling graduates may apply for membership with the Australian Association of Pastoral Counsellors through which they can obtain membership with the Psychotherapy and Counselling Federation of Australia.

Professional experience

Extensive clinical fieldwork placements and supervision are required for completion of the Bachelor of Counselling.

Career options

Graduates can pursue a range of careers, including community correctional officer, child safety officer, family resource worker, juvenile justice officer, youth worker, counsellor for Lifeline, school chaplain, teen challenge counsellor, church-based chaplain and pastoral care worker.

SAMPLE PROGRAM MAP - BACHELOR OF COUNSELLING

Year 1				
Semester 1	Introduction to Counselling and Micro-Skills	Ethical and Professional Issues in Counselling	Elective	Psychology A
Semester 2	Humanistic Theories and Interventions	Mediation and Dispute Resolution	Elective	Psychology B
Year 2				
Semester 1	Counselling Children and Adolescents	Religious and Spiritual Issues in Counselling	Elective	Lifespan Development
Semester 2	Organisations and Group Processes	Cognitive Behavioural Therapy	Elective	Abnormal Psychology
	Learning in the Community			
Year 3				
Semester 1	Family and Relationship Counselling	Addiction Counselling	Psychodynamic Counselling	Grief and Loss Counselling
Semester 2	Clinical fieldwork			

Note: Electives may be chosen from any units listed in the Schedule of Unit Offerings for the Bachelor of Arts, excluding Psychology units.

BACHELOR OF PSYCHOLOGICAL SCIENCE

Campus: Brisbane, Melbourne, Strathfield,

Duration: 3 yrs FT (or equivalent PT)

This course will provide you with the skills to pursue postgraduate study and a career as a professional psychologist. You will appreciate the principles and ethics of psychology and understand psychological assessment procedures.

Accreditation

This course is recognised by the Australian Psychology Accreditation Council as an accredited three-year undergraduate degree in psychology. If you complete the Honours program you will be eligible for probationary registration as a psychologist.

Career options

Graduates can pursue a range of careers within counselling, child development, community work, human services, and, following further study, a career as a professional psychologist.

Further study

Graduates may be eligible to apply for the Bachelor of Psychological Science (Honours) degree or the Postgraduate Diploma in Psychology.

SAMPLE PROGRAM MAP - BACHELOR OF PSYCHOLOGICAL SCIENCE

Year 1				
Semester 1	Psychology A	Theology or Philosophy unit	General elective	Introduction to Counselling & Micro Skills or Introduction to Family Studies*
Semester 2	Psychology B	Theology or Philosophy unit	Research Design and Statistics I	Humanistic Theories & Interventions or Family Studies*
Year 2				
Semester 1	Lifespan Development	Biological Psychology	Research Design and Statistics II	Ethical & Professional Issues in Counselling or Family Studies*
Semester 2	General elective	Learning & Perception	Abnormal Psychology	Mediation & Dispute Resolution or Family Studies*
	Learning in the Community			
Year 3				
Semester 1	Individual Differences & Assessment	Research Design & Statistics III	Psychology elective	General elective
Semester 2	Cognitive Psychology	Social Psychology	Psychology elective	General elective

* Offered in Melbourne only.

BACHELOR OF SOCIAL SCIENCE

Campus: Brisbane, Melbourne

Duration: 3 yrs FT (or equivalent PT)

This course will provide you with theoretical insights and practical competencies to play a creative role in a variety of public and community-based settings. You will engage in dialogue between sociology and behavioural science and develop competence in the human services sector.

Career options

Graduates can pursue a range of careers, including community development worker, community planner, human resource manager, market researcher, policy maker, analyst or adviser in government departments, government, and social welfare.

Honours

BACHELOR OF SOCIAL SCIENCE (HONOURS)

Campus: Brisbane, Melbourne

Duration: 1 yr FT (or equivalent PT)

The Honours course will give you the opportunity to study advanced units in sociology and engage in research.

All students complete a major in sociology and a minor chosen from Australian Studies, Counselling, Family Studies⁺, Politics⁺, Psychology, or Youth Work⁺.

⁺ Melbourne Campus only.

SAMPLE PROGRAM MAP - BACHELOR OF SOCIAL SCIENCE

Year 1				
Semester 1	Introduction to Sociology	Psychology A	Elective	Program core unit
Semester 2	Contemporary Society and Change	Psychology B	Research Design and Statistics 1	Program core unit
Year 2				
Semester 1	Sociology Theory and Practice	Lifespan Development	Psychology elective	Elective
Semester 2	Qualitative Sociological Research Methods	Abnormal Psychology	Elective	Social Issues and Policies
	Learning in the Community			
Year 3				
Semester 1	Quantitative Sociological Research Methods	Sociology elective	Elective	Psychology elective
Semester 2	Sociology Elective	Sociology elective	Elective	Psychology elective

BACHELOR OF SOCIAL SCIENCE (PSYCHOLOGY)

Campus: Brisbane, Melbourne
Duration: 3 yrs FT (or equivalent PT)

This course is designed to introduce students to the study of the social and behavioural sciences. Graduates will develop a sense of the importance of community service and public debate relevant to social, psychological or pastoral concerns within Australia.

Accreditation and career progression as a psychologist

This course is recognised by the Australian Psychology Accreditation Council (APAC) as an accredited three-year undergraduate sequence in psychology. ACU offers two fourth-year APAC-accredited psychology programs if you want to become a professional psychologist. Students who go on to complete the Bachelor of Psychological Science (Honours) or Postgraduate Diploma in Psychology program will be eligible for provisional registration as a psychologist in any state or territory.

Career options

Graduates can pursue a range of careers within government departments, ministries and local government as evaluators, policy analysts or advisory officers.

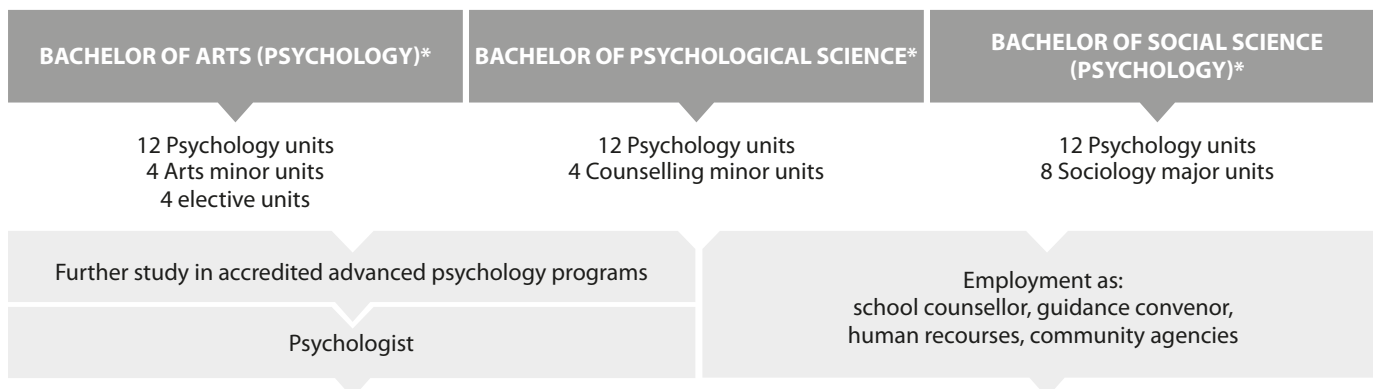
Honours

BACHELOR OF SOCIAL SCIENCE (HONOURS)

Campus: Brisbane, Melbourne
Duration: 1 yr FT (or equivalent PT)

The Honours course will give you the opportunity to study advanced units in sociology and engage in research.

PSYCHOLOGY AT ACU



* Australian Psychology Accreditation Council (APAC) accredited

BACHELOR OF SOCIAL WORK

Campus: Brisbane, Canberra, Strathfield
Duration: 2 yrs FT (or equivalent PT)
 (After completion of at least two-thirds of a recognised bachelor's degree, which includes foundational studies in psychology and sociology or equivalent)

This course will provide you with an education in social work informed by a critical understanding of social science disciplines and orientated to best professional values and practices. You will understand social processes and human behaviour and be committed

to empowering vulnerable members of society to change the conditions in which they live.

Accreditation

This nationally recognised award was developed in close consultation with the Australian Association of Social Workers (AASW). Graduates of the course are eligible for membership of the AASW.

Career options

Graduates can pursue a range of careers within community organisations, government and welfare agencies,

human services, policy formation, social administration, and program planning.

Honours

BACHELOR OF SOCIAL WORK (HONOURS)

Campus: Brisbane, Canberra, Strathfield
Duration: 2 yrs FT (or equivalent PT)

The Honours course will equip you with an advanced knowledge of social work theory. You will also develop skills in research design and methods, as well as undertaking research into social work.

SAMPLE PROGRAM MAP - BACHELOR OF SOCIAL WORK

This is an advanced entry program requiring students to have a minimum of two years of prior tertiary study.

Year 3				
Semester 1	Introduction to Social Work	Social Work Research	Theoretical Frameworks for Social Work Practice	Social Work Practice with Individuals and Groups 1
Semester 2	Social Work Field Education 1	Social Work Practice with Children, Young People and Families	Social Work and the Law	
Year 4				
Semester 1	Public Policy for Social Workers	Individual and Community Risk and Resilience	Social Work Practice with Communities	Social Work Practice with Individuals and Groups 2
Semester 2	Social Work Field Education 2	Social Work and Mental Health	Organisational Practice	

Note: Students may also be interested in the Bachelor of Arts/Bachelor of Social Work (see page 33).

BACHELOR OF YOUTH WORK

Campus: Melbourne

Duration: 3 yrs FT (or equivalent PT)

This course was developed in response to community need for highly trained and skilled youth workers to meet the demands of young people. You will acquire theoretical insights and practical competencies that will prepare you to meet the diverse challenges and demands of young people in a range of public and community-based settings.

As a professional, you will be committed to ethical practice and serving the common good. You will develop effective prevention and intervention strategies to understand the issues confronting young people and youth workers.

Professional experience

In your first year, you will be required to visit agencies and observe first-hand the characteristics of youth work. In your second and third years, you will actively work with young people within an agency.

Career options

Graduates can pursue a range of careers within community support services, policy development, charities, Christian organisations, community centres, corrective institutions, hospitals, schools and youth agencies.

SAMPLE PROGRAM MAP - BACHELOR OF YOUTH WORK

Year 1				
Semester 1	History of Young People	Program core unit	Introduction to Sociology	Elective
Semester 2	Wellbeing and Young People	Ethical Principals and Practice of Youth Work	Sociology major	Working with Youth Agencies and Organisations
Year 2				
Semester 1	Researching Young People	Building Relationships and Supporting Young People	Sociology major	Elective
Semester 2	Case Management in Youth Work	Program core unit	Sociology major	Youth Work Placement
	Learning in the Community			
Year 3				
Semester 1	Youth Work in Community Settings	Sociology major	Sociology major	Interface with Youth
Semester 2	Youth Policy	Elective	Sociology major	Sociology major

Note: Electives are chosen from the units offered in the Bachelor of Social Science and Bachelor of Arts.

Dual degrees

BACHELOR OF ARTS/ BACHELOR OF SOCIAL WORK

Campus: Brisbane, Strathfield

Duration: 4 yrs FT (or equivalent PT)

This dual degree will provide you with an education that is informed and enriched by a critical understanding of the liberal arts while being orientated to the professional values and practice of the profession of social work.

Accreditation

Graduates of the program are eligible for membership of the Australian Association of Social Workers.

Career options

Graduates can pursue a range of careers in social work, administration and policy development, community organisations, community services, corrective services,

health and rehabilitation, policy and political science, social action, administration and social service.

**JESSICA SHUWALOW
BACHELOR OF
COMMERCE**

"I'm a marketing executive at Fairfax Media and ACU has been great in allowing me to manage both work and study.

The campuses are small and easily accessible, with great transport links so I don't waste too much time travelling.

The University has provided me with some great opportunities to travel and gain work experience – including an immersion program I attended in East Timor which was amazing, and summer school in Paris.

I've found that ACU's business courses are very useful when applying learnings to employed work in a modern innovative company, and the smaller classes provide an intimacy that is hard to find at other universities."



why study **BUSINESS** *at acu?*

the smarter choice

ACU|business

YOU MATTER:

Your personalised learning experience begins with a professional team of academics who are committed and readily available to support your future success.

WE CARE:

At ACU Business we're passionate about providing education with an emphasis on ethical, social and environmental responsibilities for self and society – helping you become an influential business leader with excellent career prospects.

EMPLOYMENT RATES:

ACU graduates are high-achievers and enjoy one of the best rates of employment in Australia, with many finding jobs even before they have graduated.

JOB READY:

You will gain valuable hands-on experience through community engagement activities and professional work experience – giving you the chance to turn academic theory into practical skills. Employers appreciate the advantage this experience brings, giving you a head start in today's competitive job market.

PROFESSIONAL ACCREDITATION:

Choose from an exciting range of innovative business courses that are recognised by industry and satisfy the academic requirements for entry into professional associations including CPA Australia, The Institute of Chartered Accountants in Australia, the Australian Computer Society and the Australian Human Resources Institute.

The prerequisite to all Business courses is completion of Year 12 (or equivalent) with English proficiency. Admission rules apply, visit www.acu.edu.au/courses

BACHELOR OF BUSINESS ADMINISTRATION

Campus: Brisbane, Melbourne, North Sydney

Duration: 3 yrs FT (or equivalent PT)

This course is a creative and flexible program of study designed to provide students with a broad educational base in business as preparation for a variety of positions in corporations, small businesses and the public sector. It is a broad-based, undergraduate degree that provides a solid basis for developing a higher-level understanding of all the principal areas of business without specialisation in a particular subject area. These include accounting, finance, commercial law, management, information systems, human resource management, marketing, international business, occupational health safety and environment and supply chain management. While developing your understanding of the modern business environment, the program aims to foster an appreciation of the ethical and social contexts that help guide decision-making.

Professional experience

You must complete one unit of community engagement. You may also elect to take one or two units of professional industry experience. Each of these units is designed to enable you to understand the practical application of your studies and enhance your employability on graduation.

Career options

Graduates can pursue a range of careers such as business analyst, business consultant, business manager, government and private sector administrator, production supervisor, project planner, and sales and marketing manager.

Pathway

ASSOCIATE DEGREE IN BUSINESS ADMINISTRATION (INDIGENOUS STUDIES)

Campus: Brisbane (mixed mode)

Duration: 2 yrs FT (or equivalent PT)

This course provides an integrated program of knowledge, theory, skills development, personal development

and practical work experience. You will study a range of theories, participate in workshops and gain practical experience in management. There is an emphasis on Australian Indigenous cultures and ways of conducting business. Graduates of this course can choose to articulate into the Bachelor of Business Administration or Bachelor of Commerce to study majors in accounting, human resource management or marketing.

SAMPLE PROGRAM MAP - BACHELOR OF BUSINESS ADMINISTRATION

(Units vary between campuses and from year to year)

Year 1					
Semester 1	Foundations of Management	Principles of Accounting	Introduction to Business Information Systems	Responsible Reasoning and Communication	
Semester 2	Business Data Analysis	Principles of Marketing	Introduction to Law	Our World: Community & Vulnerability	
Year 2					
Semester 1	Principles of Finance	Economics for Business	Organisational Behaviour	Open elective	Professional Experience A (Community Engagement)
Semester 2	Business elective	Professional Ethics	Business elective	Open elective	
Year 3					
Semester 1	Organisational Change	Business elective	Business elective	Understanding Self & Society	
Semester 2	Strategic Management	Business elective	Business elective	Open elective	

BACHELOR OF BUSINESS INFORMATION SYSTEMS

Campus: North Sydney

Duration: 3 yrs FT (or equivalent PT)

This course will prepare you for a career in business information systems, including technical, user and customer support. You will acquire the technical, business and relationship skills to build and integrate effective business information systems that support the decision-making structures within an organisation. Emphasis is placed on enhancing the role of technology in contemporary organisations while considering the ethical, moral, social and environmental implications.

Professional experience

You must complete one unit of community engagement. You may also elect to take one or two units of professional industry experience. Each of these units is designed to enable you to understand the practical application of your studies and enhance your employability on graduation.

Accreditation

Graduates are eligible for professional-level accreditation with the Australian Computer Society.

Career options

Graduates can pursue a range of careers such as business systems analyst, database administrator, information systems manager, software engineer, and technical and network support professional.

Honours

BACHELOR OF BUSINESS INFORMATION SYSTEMS (HONOURS)

Campus: North Sydney

Duration: 1 yr FT (or equivalent PT)

Honours courses are available to high-achieving students and include writing a thesis along with coursework units. You will develop your research skills and build on the knowledge that you gained in your major area of study.

Pathway

CERTIFICATE IN BUSINESS INFORMATION SYSTEMS

Campus: North Sydney

Duration: 0.5 yr FT (or equivalent PT)

This is a non-award program and integrates the study of business information systems with a range of subjects.

You can choose to study a selection of units for personal development or a sequence of units that provide credit towards a variety of undergraduate courses, including the Bachelor of Business Information Systems, Bachelor of Business Administration and Bachelor of Commerce.

SAMPLE PROGRAM MAP - BACHELOR OF BUSINESS INFORMATION SYSTEMS

(Units vary between campuses and from year to year)

Year 1					
Semester 1	Foundations of Management	Principles of Accounting	Introduction to Business Information Systems	Responsible Reasoning and Communication	
Semester 2	Business Data Analysis	Principles of Marketing	Introduction to Law	Our World: Community & Vulnerability	
Year 2					
Semester 1	IT Infrastructure	Application Development 1	Business Analysis 2	Elective	Professional Experience A (Community Engagement)
Semester 2	E-Business Design	Application Development 2	Professional Ethics	Elective	
Year 3					
Semester 1	Systems Management	E-Business Applications	Project Management	Understanding Self & Society	
Semester 2	Current Issues in E-Business	Information Systems Project OR Professional Experience B (Industry Experience)	Elective	Elective	

BACHELOR OF COMMERCE

Campus: Brisbane, Melbourne, North Sydney

Duration: 3 yrs FT (or equivalent PT)

This course will prepare you for entry-level employment and future managerial positions. You will develop an understanding of, and proficiency in, the principles of business required in a variety of commercial, industrial and service organisations including agencies across all levels of government and not-for-profit bodies. Major areas of study include accounting, finance, human resource management, marketing, information systems, commercial law and accounting /commercial law dual major and occupational health, safety and environment (OHSE), international business (Brisbane only) and supply chain management. Availability of majors varies between campuses.

You will have the opportunity to select a major from second year. In keeping with the Mission of the University, several units focus on fostering business ethics and personal values in a workplace setting.

Professional experience

You must complete one unit of community engagement. You may also elect to take one or two units of professional industry experience. Each of these units is designed to enable you to understand the practical application of your studies and enhance your employability on graduation.

Accreditation

The Accounting major satisfies the academic requirements for entry into professional associations including CPA Australia and The Institute of Chartered Accountants in Australia.

Career options

Graduates can pursue a range of careers such as accountant, business analyst, computer systems analyst, forensic accountant, human relations manager, marketing, advertising or media professional, market researcher, public relations and fundraising manager, purchaser, buyer or trader, salesperson, supply chain manager and OHSE manager.

Honours

BACHELOR OF COMMERCE (HONOURS)

Campus: Brisbane, Melbourne, North Sydney

Duration: 1 yr FT (or equivalent PT)

Honours courses are available to high-achieving students and include writing a thesis along with coursework units. You will develop your research skills and build on the knowledge that you gained in your major area of study.

Pathway

CERTIFICATE IN COMMERCE

Campus: Brisbane, Melbourne, North Sydney

Duration: 0.5 yr FT (or equivalent PT)

This is a non-award program and integrates the study of business with a range of subjects. You can choose to study a selection of units for personal development or a sequence of units that provide credit towards a variety of undergraduate courses, including the Bachelor of Business Administration and Bachelor of Commerce.

SAMPLE PROGRAM MAP - BACHELOR OF COMMERCE

(Units vary between campuses and from year to year)

Year 1					
Semester 1	Foundations of Management	Principles of Accounting	Introduction to Business Information Systems	Responsible Reasoning and Communication	
Semester 2	Business Data Analysis	Principles of Marketing	Introduction to Law	Our World: Community & Vulnerability	
Year 2					
Semester 1	B.Com major 1	B.Com major 2	Economics for Business	B.Com major 9 OR Elective	Professional Experience A (Community Engagement)
Semester 2	B.Com major 3	B.Com major 4	Professional Ethics	Elective	
Year 3					
Semester 1	B.Com major 5	B.Com major 6	Elective	Understanding Self & Society	
Semester 2	B.Com major 7	B.Com major 8	Strategic Management	Elective	

Note: Majors include: Sydney - Accounting, HRM, Marketing, Financial Services, Information Systems, Management. Melbourne - Accounting, HRM, Marketing, Commercial Law Accounting/Commercial Law. Brisbane - Accounting, HRM, Marketing, International Business. Online only - Occupational Health, Safety & Environment and Supply Chain Management* (*subject to availability)

BACHELOR OF HUMAN RESOURCE MANAGEMENT

Campus: Brisbane, Melbourne, North Sydney

Duration: 3 yrs FT (or equivalent PT)

You will acquire the knowledge and transferable skills necessary to manage and sustain organisational human resources. This is achieved through innovative teaching and learning strategies that will demonstrate how to enhance organisational capabilities and achieve an organisation's goals in an efficient and effective manner.

Using student-centred learning experiences to encourage active engagement in real case scenarios, this course integrates human resource management processes including recruitment, selection and retention, learning and development, managing diversity, work/life balance, inclusiveness, workplace relations, negotiation, occupational health and safety, globalisation, innovation, remuneration and employee engagement.

Professional experience

You must complete one unit of community engagement and one unit of professional industry experience. You may also elect to take one additional unit of professional industry experience. Each of these units is designed to enable you to understand the practical application of your studies and enhance your employability on graduation.

Accreditation

Graduates are eligible for professional-level accreditation with the Australian Human Resources Institute.

Career options

Graduates can pursue a range of careers within corporate training, employment relations, human capital consultancy, industrial relations, international human resource management, occupational health and safety, recruitment, and training and development consultancy.

Honours

BACHELOR OF HUMAN RESOURCE MANAGEMENT (HONOURS)

Campus: North Sydney

Duration: 1 yr FT (or equivalent PT)

Honours courses are available to high-achieving students and include writing a thesis along with coursework units. You will develop your research skills and build on the knowledge that you gained in your major area of study.

SAMPLE PROGRAM MAP - BACHELOR OF HUMAN RESOURCE MANAGEMENT

(Units vary between campuses and from year to year)

Year 1					
Semester 1	Foundations of Management	Principles of Accounting	Introduction to Business Information Systems	Responsible Reasoning and Communication	
Semester 2	Business Data Analysis	Principles of Marketing	Introduction to Law	Our World: Community & Vulnerability	
Year 2					
Semester 1	Organisational Behaviour	Human Resource Development	Economics for Business	Strategic HRM	Professional Experience A (Community Engagement)
Semester 2	Performance Management	Employment Relations	Professional Ethics	Elective	
Year 3					
Semester 1	Organisational Change	Employment Law	Understanding Self & Society	Professional Experience B (Industry Experience)	
Semester 2	International HRM	Contemporary Issues in HRM	Strategic Management	Elective	

BACHELOR OF MARKETING

Campus: Brisbane, Melbourne, North Sydney

Duration: 3 yrs FT (or equivalent PT)

Marketing plays a pivotal role in the success of any business. You will develop the theoretical knowledge and practical skills needed for a stimulating career in marketing. Plan, design, implement and manage effective marketing strategies and tactics from an ethical viewpoint. Understand consumer and organisational behaviour and the importance of market research, and factors to consider when pricing, distributing and promoting goods and services in different markets.

Professional experience

You must complete one unit of community engagement and one unit of professional industry experience. You may also elect to take another unit of professional industry experience. Each of these units is designed to enable you to understand the practical application of your studies and enhance your employability on graduation.

Career options

Graduates can pursue a range of careers such as advertising executive, brand manager, event manager, fundraising officer, market researcher, public relations executive, marketing manager and sales executive.

Honours

BACHELOR OF MARKETING (HONOURS)

Campus: Brisbane, Melbourne, North Sydney

Duration: 1 yr FT (or equivalent PT)

Honours courses are available to high-achieving students and include writing a thesis along with coursework units. You will develop your research skills and build on the knowledge that you gained in your major area of study.

SAMPLE PROGRAM MAP - BACHELOR OF MARKETING

(Units vary between campuses and from year to year)

Year 1					
Semester 1	Foundations of Management	Principles of Accounting	Introduction to Business Information Systems	Responsible Reasoning and Communication	
Semester 2	Business Data Analysis	Principles of Marketing	Introduction to Law	Our World: Community & Vulnerability	
Year 2					
Semester 1	Marketing Research	Consumer Behaviour	Economics for Business	Elective	Professional Experience A (Community Engagement)
Semester 2	Marketing Communication	Retail Marketing	Professional Ethics	Elective	
Year 3					
Semester 1	International Marketing	E-Marketing	Understanding Self & Society	Professional Experience B (Industry Experience)	
Semester 2	Services Marketing	Strategic Marketing	Strategic Management	Elective	

BACHELOR OF INFORMATION TECHNOLOGY

Campus: North Sydney

Duration: 1.5 - 2 yrs FT

(after advanced standing is granted from completion of the Diploma or Advanced Diploma in Information Technology)

This course is available only to students who have completed a relevant diploma or advanced diploma and prepares students for a variety of occupations in information technology. Emphasis is placed on the role of computer technologies in contemporary organisations. The study of information technology focuses on computer hardware and software and involves

understanding the processes for analysing, designing, building, testing and implementing computer-based systems to support the needs of individuals, organisations and society. Students learn the analytical and technical skills together with the human and business skills needed in an organisation.

Professional experience

You must complete one unit of community engagement. You may also elect to take one or two units of professional industry experience. Each of these units is designed to enable you to understand the practical application of your studies and enhance your employability on graduation.

Accreditation

The Bachelor of Information Technology has been designed to meet accreditation requirements of the Australian Computer Society.

Career options

Graduates can pursue a range of careers such as business analyst, database administrator, IS auditor, IT consultant and project leader, IT trainer or educator, network manager, programmer, sales and marketing manager, software engineer, systems programmer, and technical support.

**ALEXANDER KNIGHT
BACHELOR OF COMMERCE**

"The business degree offered at ACU is really comprehensive and allowed me to explore many different areas before deciding on a major. I know that when I start out in the business world I will be well equipped to succeed in a range of roles.

ACU has been a fun and friendly place to study. The lecturers and staff are always willing to give their time to help and genuinely want their students to succeed and excel.

Because of the relatively small class sizes, my classmates quickly became friends and hopefully future business colleagues. It's a great way to make connections and set myself up for the future."



Dual degrees

**BACHELOR OF COMMERCE/
BACHELOR OF BUSINESS
INFORMATION SYSTEMS**

Campus: North Sydney
Duration: 4 yrs FT (or equivalent PT)

Qualify with strong technical skills, business acumen, a thorough understanding of ethics, a specialisation in a business discipline including accounting, finance, commercial law, management, information systems, human resource management, marketing, international business, occupational health safety and environment, and supply chain management, and an ability to design and implement information systems effectively in a business environment.

Professional experience

You must complete one unit of community engagement. You may also elect to take one or two units of professional industry experience. Each of these units is designed to enable you to understand the practical application of your studies and enhance your employability on graduation.

Career options

Graduates can pursue a range of careers such as business systems analyst, end-user and product support, financial services professional, information systems auditor and consultant, software engineer and website developer.

**BACHELOR OF ARTS/
BACHELOR OF COMMERCE**

Campus: Brisbane, Melbourne, North Sydney, Strathfield,
Duration: 4 yrs FT (or equivalent PT)

You will gain a liberal arts education and develop skills focused on managerial decision-making, business and personal leadership and the ethics of values-based management, as well as undertaking relevant work experience. These courses are designed for students who wish to combine the benefits of a liberal arts education with specific skills focusing on accounting, human resource management or marketing. Your career opportunities in a range of business-related fields will be broadened by the generic communication and problem-solving skills you develop in the Bachelor of Arts component of the

course. In keeping with the Mission of the University, several units within the degree focus on business ethics and personal values of the individual in a workplace setting.

As part of the Bachelor of Commerce, choose to specialise in accounting, marketing or human resource management. As part of the Bachelor of Arts, choose to study a range of units from the liberal arts fields such as history, mathematics, literature, economics or theological studies.

Professional experience

You must complete one unit of community engagement. You may also elect to take one or two units of professional industry experience. Each of these units is designed to enable you to understand the practical application of your studies and enhance your employability on graduation.

Accreditation

The Accounting major satisfies the academic requirements for entry into professional associations including CPA Australia and The Institute of Chartered Accountants in Australia.

YASMIN RUMJAHN
GRADUATE, BACHELOR OF COMMERCE

“When I graduated from ACU I won one of two places in the Optus Graduate Development Program, and am spending two years rotating through the company’s marketing departments.

It’s been fantastic, and I know that the real-world assessments, work experience and dedicated lecturers played a huge part in helping me secure this role.

I received constant support and the theory components of my course were supported by lecturers who are in the industry, and brought practical knowledge to the classroom.

I also did community volunteering as part of my degree which I loved, and was involved in organising student events through the Student Association – always lots of fun.”



**BACHELOR OF COMMERCE/
BACHELOR OF BUSINESS
ADMINISTRATION**

Campus: Brisbane, Melbourne,
North Sydney, Strathfield

Duration: 4 yrs FT (or equivalent PT)

This course combines the specialised knowledge of the Bachelor of Commerce with the flexibility of the Bachelor of Business Administration. You will be able to take a major in one of the following areas accounting, financial services, commercial law, international business, marketing, management, human resource management, occupational health safety and environment, supply chain management and information systems.

Professional experience

You must complete one unit of community engagement. You may also elect to take one or two units of professional industry experience. Each of these units is designed to enable you to understand the practical application of your studies and enhance your employability on graduation.

**BACHELOR OF NURSING/
BACHELOR OF BUSINESS
ADMINISTRATION**

Campus: Brisbane, Melbourne,
North Sydney

Duration: 4.5 yrs FT (or equivalent PT)

The Bachelor of Nursing/Bachelor of Business Administration will prepare graduates to meet the evolving business management expectations of our health services. The health industry is changing at a great pace and the role of the registered nurse with it. Registered nurses are increasingly moving from bedside practice into middle management roles early in their careers and are expected to take leadership roles in multi-disciplinary teams. In the wide range of practice settings, from hospitals to aged care, general practice, private practice and the community, health is increasingly seen as a business, and nurses are required to contribute to the success of that business through effective management of staff and financial resources.

Professional experience

You must complete one unit of community engagement. Students will also undertake six clinical placements in a variety of health care environments.

Accreditation

Graduates will be eligible to apply for registration as a nurse with the Nursing and Midwifery Board of Australia.

Career options

Graduates will find careers in government and/or private hospitals, rural and remote retrieval services, management, education and research and health promotion, and a wide range of occupations that require an understanding of business processes.

**BACHELOR OF BUSINESS
ADMINISTRATION/BACHELOR OF
GLOBAL STUDIES**

Campus: Melbourne, North Sydney
Duration: 4.5 yrs FT (or equivalent PT)

The Bachelor of Business Administration/ Bachelor of Global Studies program combines a solid basis for developing



a higher-level understanding of all the principal areas of business with the opportunity to learn about social, political, cultural, environmental and economic changes that are shaping the world. This knowledge is enhanced by a period of study abroad at one of over 60 partner institutions around the world.

Professional experience

You must complete one unit of community engagement. You may also elect to take one or two units of professional industry experience. Each of these units is designed to enable you to understand the practical application of your studies and enhance your employability on graduation.

Career options

Graduates will be well-positioned for careers working in business, management or marketing positions within the United Nations system and other international organisations such as the World Bank, social entrepreneurship, multi-national corporations and government service such as DFAT and Austrade.

BACHELOR OF COMMERCE/ BACHELOR OF GLOBAL STUDIES

Campus: Melbourne, North Sydney
Duration: 4.5 yrs FT (or equivalent PT)

The Bachelor of Commerce/Bachelor of Global Studies program combines a commerce specialisation with the opportunity to learn about social, political, cultural, environmental and economic changes that are shaping the world. This knowledge is enhanced by a period of study abroad at one of more than 60 partner institutions around the world.

As part of the Bachelor of Commerce, choose to specialise in accounting, finance, commercial law, management, information systems, human resource management, marketing, international business, occupational health safety and environment, and supply chain management.

Professional experience

You must complete one unit of community engagement. You may also elect to take one or two units of professional industry experience. Each

of these units is designed to enable you to understand the practical application of your studies and enhance your employability on graduation.

Career options

Graduates will be well positioned for careers working in accounting, business, management, human resources or marketing positions within the United Nations system and other international organisations such as the World Bank, social entrepreneurship, multi-national corporations and government services such as DFAT and Austrade.

**CATE KALNINS
BACHELOR OF
EDUCATION
(EARLY CHILDHOOD
AND PRIMARY)**

“Early childhood and primary was my choice because I felt that it would offer more scope into the teaching, learning and development of children.

Completing the course at ACU has given me the opportunity to study theology – which means that I am qualified to teach in Catholic schools.

We also do a community engagement unit which allows us to connect with the broader community. I’ve worked at a Homework Club for children from refugee backgrounds – tutoring them after class and helping them stay on top of their schoolwork. It’s been a very rewarding experience and the kids are great!

The University also has a great reputation with schools – they are always positive about having ACU pre-service teachers for the practical work experience components.”



why study EDUCATION *at acu?*

ACU|education

INTERNATIONAL REACH:

Our courses align with national and international standards in teacher education so you can work around the world. Our global partnerships provide opportunities to undertake part of your degree, including professional experience, in an international setting.

CHOICE:

We provide a range of specialised course options in early childhood education, primary and secondary teaching, Indigenous education and religious education. We prepare you to teach in Catholic and other faith-based schools, and in government and independent schools.

CATHOLIC PERSPECTIVE:

As a contemporary Catholic university, we proudly value diversity and welcome people from different cultures and religions. We provide distinctive teacher education with an emphasis on community engagement and service to others.

DEDICATION TO QUALITY:

We encourage our students to engage in real situations which stimulate intellectual engagement to form the basis of excellence in education. Key areas include literacy and numeracy, information and communication technology, disability studies and inclusive schooling.

WE CARE:

We care about the disadvantaged and the environment. Our commitment to social justice and environmental sustainability help you to explore your potential – professionally and personally – to become the best educator you can be and to make a positive difference.



BACHELOR OF EDUCATION (EARLY CHILDHOOD AND PRIMARY)

Campus: Ballarat, Brisbane, Canberra, Melbourne, Strathfield
Duration: 4 yrs FT (or equivalent PT)

Gain the professional knowledge and skills that will enable you to support young children in the crucial formative stages of their development and learning. This course is designed to develop teachers for early childhood settings and generalist primary teachers with particular strengths in literacy, mathematics, science and technology. The course includes studies in early childhood specialities to prepare teachers for practice in early childhood education. There are rich opportunities for extensive professional experience in schools and early childhood settings from the first year of the program, providing you with the opportunity to experience the vitality and reality of the classroom. As a teaching professional, you will be reflective, culturally aware, responsive and committed to making a positive difference in the lives of young children and to shaping a just and equitable society.

Professional experience

Students must complete professional and volunteer experience consisting of up to 100+ days of school-based learning experiences, structured observational tasks, community engagement, and supervised professional experience in early childhood and primary school settings. All students must apply for and obtain a Working With Children Check and Police Check before they can be permitted to participate in the Professional Experience Program. A Senior First Aid Certificate may also be required.

Career options

- Early childhood teacher or primary teacher in Australia or overseas
- Primary carer 0-5 years
- Authorised supervisor in an early childhood centre
- Education professional or administrator within government and private sectors.

Recommended Year 12 studies

English, mathematics and science.

Entry requirements

Completion of Year 12 (or equivalent) with english and mathematics proficiency*.

* Admission rules apply, visit www.acu.edu.au/courses

Teacher accreditation

Graduates will be eligible for teacher registration and accreditation to teach children from prior-to-school settings through to the end of primary school in Catholic and other faith-based schools, and in government and independent schools.

Accreditation to teach religious education

Students can select a study pattern to meet the requirement to teach religious education. Three strands of religious education are offered within this course:

Qld: Catholic, Lutheran and Anglican
 Vic: Catholic and Lutheran
 NSW & ACT: Catholic

If you are not seeking such accreditation, you may undertake approved alternative units.

Pathways

ASSOCIATE DEGREE IN EARLY CHILDHOOD EDUCATION

Campus: Canberra
Duration: 2 yrs FT (or equivalent PT)

This course will prepare you to work in centres that cater for children aged from 0-5 years. You will be introduced to child development, learning and education, care and wellbeing, inclusion and disability.

Career options

- Early childhood room or group leader
- Primary carer 0-5 years
- Authorised supervisor in an early childhood centre
- After completing this course you may choose to apply for the Bachelor of Teaching (Early Childhood) or the Bachelor of Education (Early Childhood and Primary).

BACHELOR OF TEACHING (EARLY CHILDHOOD)

Campus: Canberra, Strathfield
Duration: 3 yrs FT (or equivalent PT)

This course will prepare you to teach in early childhood and prior-to-school settings in ACT and NSW. These include kindergartens, preschools and childcare centres only (four-year awards are mandatory to teach in schools).

Career options

- Early childhood teacher
- Primary carer 0-5 years
- Authorised supervisor in an early childhood centre
- Director of a day care centre
- Educational administrator within government and private sectors
- After completing this course you may choose to apply for the Bachelor of Education (Early Childhood and Primary).

INNES HARRIMAN
GRADUATE, BACHELOR OF EDUCATION (PRIMARY)

“While I was completing my studies at ACU I made lots of great contacts, and was able to complete my final practical unit at St Joseph’s College in Gregory Terrace, Brisbane.

I was offered a permanent full-time position there when I graduated, and it’s been fantastic.

Every day I get to go to work and help improve the intellect, confidence, life-skills and educational experience of hundreds of students.”

SAMPLE PROGRAM MAP - EARLY CHILDHOOD AND PRIMARY COURSES

(Units vary between campuses and from year to year)

ASSOCIATE DEGREE IN EARLY CHILDHOOD	Year 1					
	Semester 1	Contexts for Learning and Development	Early Childhood Pedagogy and Curriculum	Personal Development, Health and Physical Education	Children’s Literature for Literacy	
	Semester 2	The Ecology of Childhood	Partnerships for Learning	Creative Arts Education 1	Linguistics for Literacy	Professional Experience Early Childhood (0-2) (10 days)
	Year 2					
	Semester 1	Building Curriculum Connections and Continuities	Creating Inclusive, Safe and Supportive Schools	Literacy Education 1	Science and Technology for Early Childhood and Primary Teaching 1	Professional Experience Early Childhood (3-5) (3 weeks block)
	Semester 2	Early Childhood Leadership	Family Studies and Disability	Connecting Society and Environment	Exploring Mathematics 1	Community Engagement Program (70 hours)
BACHELOR OF TEACHING (EARLY CHILDHOOD)	Year 3					
	Semester 1	Teaching and Learning: Preparing for the Contexts of the Field	Religious Education Strand Unit OR Elective	Mathematics: Learning and Teaching 1	Exploring Mathematics 2	Professional Experience Early Childhood (5-8) (3 weeks block)
	Semester 2	Teaching and Managing Learning Environments	Mathematics: Learning and Teaching 2	Literacy Education 2	Science and Technology for Early Childhood and Primary Teachers 2	Professional Experience Early Childhood (5-12) (3 weeks block)
	Year 4					
BACHELOR OF EDUCATION (EARLY CHILDHOOD AND PRIMARY)	Semester 1	Science and Technology Education	Transition into the Profession	Religious Education Strand Unit OR Elective	Australian Indigenous Peoples – Past and Present	
	Semester 2	Catering for Diversity in the Classroom	Creative Arts Education 2	Religious Education Strand Unit OR Elective	Religious Education Strand Unit OR Elective	Professional Experience Primary (2 weeks and 8 weeks block)

Note: This is a generic outline only, the course structure and units vary between campuses as stipulated by state registration/employing bodies. Campus-based course structures can be found on our website at www.acu.edu.au/courses

BACHELOR OF INCLUSIVE EDUCATION AND DISABILITY STUDIES

Campus: Strathfield

Duration: 3 yrs FT (or equivalent PT)

Contemporary understanding of disability acknowledges the rights of people with a disability to be full and participating members of society. Many people with a disability, particularly those with learning and intellectual disabilities, require either episodic or lifelong support to take their rightful place in society. This course is designed to provide a specialisation in community or school education. You will develop a holistic view of disability and of the social structures that influence learning and development for people with a disability. This includes the theoretical frameworks for understanding disability, social justice and empowerment, advocacy, influence of disability on learning, social dynamics and positive behaviour support.

Professional experience

You can tailor the course to your particular interest area with project-based assessments that facilitate the integration of theory and professional practice, fieldwork components and the selection of specialisation units. In order to participate in professional experience with children and vulnerable persons you must obtain a Working With Children Check and Police Check.

Career options

This is one of the few university courses available in this area and will prepare you for a career in disability or human services management. Graduates have the opportunity to advance their careers by undertaking further studies. By completing a Master of Teaching (Primary), graduates will be qualified to teach in primary schools including teaching in special education areas. Graduates may also apply for entry into the Bachelor of Social Work to gain highly sought-after skills in social work and disability studies.

Entry requirements

Completion of Year 12 or equivalent. Applicants with experience working in community organisations that provide a service to people with a disability are also encouraged to apply.

Pathway

ASSOCIATE DEGREE IN INCLUSIVE EDUCATION AND DISABILITY STUDIES

Campus: Strathfield

Duration: 2 yrs FT (or equivalent PT)

This course provides the opportunity for students to prepare for a career in the disability or human services fields and provides a pathway to the Bachelor of Inclusive Education and Disability Studies.

Career options

As a graduate you will be well-equipped to follow many career paths in the human services and disability sectors such as accommodation, employment in day or respite services, policy development or advocacy.

SAMPLE PROGRAM MAP - INCLUSIVE EDUCATION AND DISABILITY STUDIES

ASSOCIATE DEGREE IN INCLUSIVE EDUCATION AND DISABILITY STUDIES	Year 1				
	Semester 1	Contexts for Learning and Development	Attitudes and Inclusion	Disability Studies	Disability Support Practice* * This unit includes professional experience fieldwork
	Semester 2	Technology and Communication	Interpersonal Communication Skills	Person-Centred Planning and Inclusive Learning	Our World: Community and Vulnerability
	Year 2				
	Semester 1	Disability Employment Support	Understanding Behaviours and Disability	Community Services Specialisation unit OR School Education Specialisation unit	Implementing Person Centred Supports* * This unit includes professional experience fieldwork
	Semester 2	Supporting Social Relationships	Family Studies and Disability	Instructional Delivery in Community Settings	Community Services Specialisation unit OR School Education Specialisation unit
	Year 3				
	Semester 1	Physical and Mental Health Issues	Community Services Specialisation unit OR School Education Specialisation unit	Community Services Specialisation unit OR School Education Specialisation unit	Evidence Based Practice * This unit includes professional experience fieldwork
	Semester 2	Understanding Self and Society: Contemporary Perspectives	Positive Behaviour Approaches	Community Services Specialisation unit OR School Education Specialisation unit	Community Services Specialisation unit OR School Education Specialisation unit
	BACHELOR OF INCLUSIVE EDUCATION AND DISABILITY STUDIES				

BACHELOR OF EDUCATION (PRIMARY)

Campus: Ballarat, Brisbane, Canberra, Melbourne, Strathfield

Duration: 4 yrs FT (or equivalent PT)

Primary school teaching is an energising and exciting profession that utilises a variety of skills. These include creativity, organisation and reflection combined with strong interpersonal and communication skills. ACU has a long-held reputation as a leading provider of quality teacher education. You will gain a degree with a reputation of high academic rigour that meets accreditation standards and strengths in the national priorities of literacy, numeracy, science and technology. As a teaching professional you will be reflective, culturally aware, responsive and committed to making a positive difference in the lives of children and to shaping a just and equitable society.

Professional experience

Students must complete professional and volunteer experience consisting of up to 100+ days of school-based learning experiences, structured observational tasks, community engagement and supervised professional experience in primary school settings. All students must obtain a Working With Children Check before they can participate in the Professional Experience Program. A Senior First Aid Certificate and Police Check may also be required.

Career options

- Primary teacher in Australia or overseas
- Education professional or administrator within government and private sectors.

Recommended Year 12 studies

English, mathematics and science.

Entry requirements

Completion of Year 12 (or equivalent) with english and mathematics proficiency*.

* Admission rules apply, visit www.acu.edu.au/courses

Teacher accreditation

Graduates will be eligible for teacher registration and accreditation to teach in primary schools across Catholic and other faith-based schools, and in government and independent schools.

Accreditation to teach religious education

Students can select a study pattern to meet the requirement to teach religious education. Three strands of religious education are offered within this course:

Qld: Catholic, Lutheran and Anglican
Vic: Catholic and Lutheran
NSW & ACT: Catholic

SAMPLE PROGRAM MAP - BACHELOR OF EDUCATION (PRIMARY)

Year 1					
Semester 1	Contexts for Learning and Development	Children's Literature for Literacy	Science and Technology for Early Childhood and Primary Teachers 1	Indigenous Cultures and People	Professional Experience Primary (10 days observation)
Semester 2	Understanding Learning	Linguistics for Literacy	Exploring Mathematics 1	Our World: Community and Vulnerability	
Year 2					
Semester 1	Teaching and Learning: Preparing for the Contexts of the Field	Mathematics: Learning and Teaching 1	Literacy Education 1	Religious Education Strand unit OR Elective	Professional Experience Primary (approx. 5 weeks)
Semester 2	Teaching and Managing Learning Environments	Science and Technology for Early Childhood and Primary Teachers 2	State-Specific unit	Religious Education Strand unit OR Elective	
Year 3					
Semester 1	Creating Inclusive, Safe and Supportive Schools	Exploring Mathematics 2	Creative Arts Education 1	Religious Education Strand unit OR Elective	Community Engagement Program (70 hours)
Semester 2	Literacy Education 2	Personal Development Health and Physical Education 1	Mathematics: Learning and Teaching 2	Understanding Self and Society: Contemporary Perspectives OR Religious Education Strand unit	Professional Experience Primary (4 weeks block)
Year 4					
Semester 1	Transition into the Profession	Science and Technology Education	Connecting Society and Environment: Curriculum for Learning	State-Specific unit	Professional Experience Primary (8 weeks block)
Semester 2	Action Research as a Reflective Practice	Catering for Diversity	Creative Arts Education 2	Religious Education Strand unit OR Elective	

Note: This is a generic outline only, the course structure and units vary between campuses as stipulated by state registration/employing bodies. Campus-based course structures can be found on our website at www.acu.edu.au/courses



Dual degrees

BACHELOR OF TEACHING/ BACHELOR OF ARTS (HUMANITIES)

Campus: Brisbane, Melbourne, Strathfield

Duration: 4 yrs FT (or equivalent PT)

This dual degree leads to a career in secondary teaching with specialisations within the humanities. It combines compulsory education, curriculum and teaching units with core units in two arts areas to qualify you to teach in two core discipline areas within secondary schools. As a teaching professional, you will be reflective, culturally aware, responsive and committed to making a positive difference in the lives of students and to shaping a just and equitable society.

BACHELOR OF TEACHING/ BACHELOR OF ARTS (MATHEMATICS)

Campus: Melbourne, Strathfield

Duration: 4 yrs FT (or equivalent PT)

This dual degree leads to a career in secondary teaching with a specialisation in mathematics. It combines compulsory

education, curriculum and teaching units with core units in two arts areas (one of which is mathematics) to qualify you to teach in two core discipline areas within secondary schools. As a teaching professional, you will be reflective, culturally aware, responsive and committed to making a positive difference in the lives of students and to shaping a just and equitable society.

BACHELOR OF TEACHING/ BACHELOR OF ARTS (TECHNOLOGY)

Campus: Strathfield

Duration: 4 yrs FT (or equivalent PT)

This dual degree leads to a career in secondary teaching with a specialisation in technology, for example: textiles technology, food technology, industrial technology. It combines compulsory education, curriculum and teaching units with core units in two arts areas (one of which is technology) to qualify you to teach in two core discipline areas within secondary schools. As a teaching professional, you will be

reflective, culturally aware, responsive and committed to making a positive difference in the lives of students and to shaping a just and equitable society.

BACHELOR OF TEACHING/ BACHELOR OF ARTS (VISUAL ARTS)

Campus: Strathfield

Duration: 4 yrs FT (or equivalent PT)

This dual degree leads to a career in secondary teaching with a specialisation in visual arts. It combines compulsory education, curriculum and teaching units with core units in two arts areas (one of which is visual arts) to qualify you to teach in two core discipline areas within secondary schools. As a teaching professional, you will be reflective, culturally aware, responsive and committed to making a positive difference in the lives of students and to shaping a just and equitable society.

See page 52 for teaching areas and course structure

Professional experience

Students must complete professional and volunteer experience consisting of up to 100+ days of school-based learning experiences, structured observational tasks, community engagement, and supervised professional experience in secondary school settings. All students must obtain a Working With Children Check and Police Check before they can participate in the Professional Experience Program. A Senior First Aid Certificate may also be required.

Recommended Year 12 studies

English and mathematics.

Entry requirements

Completion of Year 12 (or equivalent) with English and mathematics proficiency*.

* Admission rules apply, visit www.acu.edu.au/courses

Career options

- Teach in secondary schools in Australia or overseas
- Teach in Institutes of Technical and Further Education (TAFE)
- Teach in vocational education and community settings
- Educational professional or administrator within government and private sectors.

Teacher accreditation

Graduates will be eligible for teacher registration and accreditation to teach secondary students in Catholic and other faith based schools, and in government and independent schools.

Accreditation to teach religious education

Accreditation to teach religious education requires students to complete prescribed units within the Theology/ Study of Religions teaching area.

SAMPLE PROGRAM MAP - BACHELOR OF TEACHING/BACHELOR OF ARTS

	Arts units	Education units	Curriculum and teaching units	Professional experience
Year 1				
Semester 1	Arts unit* Arts unit Arts unit	Contexts for Learning and Development		
Semester 2	Arts unit Arts unit Arts unit	Understanding Learning		
Year 2				
Semester 1	Arts unit Arts unit Arts unit	Teaching and Managing Learning Environments		Community engagement (70 hours)
Semester 2	Arts unit Arts unit Arts unit	Creating Inclusive, Safe and Supportive Schools		Professional experience (Includes one day a week visits)
Year 3				
Semester 1	Arts unit Arts unit		Curriculum and teaching unit Curriculum unit	Professional experience (4 weeks block)
Semester 2	Arts unit Arts unit		Curriculum and teaching unit Curriculum unit	
Year 4				
Semester 1		Curriculum and Assessment Transition to the Profession Curriculum Literacies	Indigenous Cultures and Peoples	Professional experience (5 school visits) (10 weeks internship)
Semester 2		Diversity in the Classroom	Contemporary Issues in School Curriculum	

Note: This is a generic outline only, the course structure and units vary between campuses as stipulated by state registration/employing bodies.

* Campus-based course structures and Arts unit information can be found on our website at www.acu.edu.au/courses

TEACHING AREAS - BACHELOR OF TEACHING/BACHELOR OF ARTS (HUMANITIES)

TEACHING AREAS AVAILABLE	Brisbane	Melbourne	Strathfield
Business Studies	Major/Minor	Major/Minor	Major/Minor
Computing			Minor
Drama	Major/Minor		Minor
Economics			Major/Minor
English Literature	Major/Minor	Major/Minor	Major/Minor
Geography			Major/Minor
History (Modern and Ancient)	Major/Minor	Major/Minor	Major/Minor
Humanities		Major/Minor	
Mathematics		Major/Minor	Major/Minor
Music	Major/Minor		
Theology/Study of Religions	Major/Minor	Major/Minor	Major/Minor
Visual Arts	Major/Minor		Major/Minor

TEACHING AREAS - BACHELOR OF TEACHING/BACHELOR OF ARTS (MATHEMATICS)

TEACHING AREAS AVAILABLE	Melbourne	Strathfield
Business Studies	Major/Minor	Major/Minor
Computing		Minor
Economics		Major/Minor
English Literature	Major/Minor	Major/Minor
Geography		Major/Minor
History (Modern and Ancient)	Major/Minor	Major/Minor
Mathematics	Major/Minor	Major/Minor
Theology/Study of Religions	Major/Minor	Major/Minor
Visual Arts		Minor

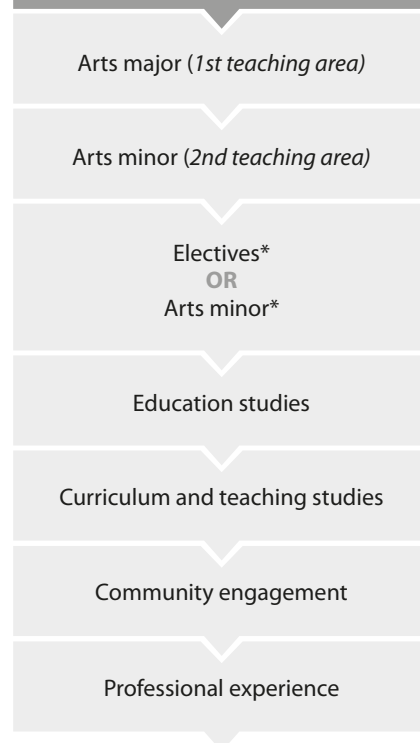
TEACHING AREAS - BACHELOR OF TEACHING/BACHELOR OF ARTS (VISUAL ARTS)

TEACHING AREAS AVAILABLE	Strathfield
Business Studies/Economics	Major/Minor
Computing	Minor
English Literature	Major/Minor
Geography	Major/Minor
History (Modern and Ancient)	Major/Minor
Mathematics	Major/Minor
Theology/Study of Religions	Major/Minor
Visual Arts	Major/Minor

TEACHING AREAS - BACHELOR OF TEACHING/BACHELOR OF ARTS (TECHNOLOGY)

TEACHING AREAS AVAILABLE	Strathfield
Computing	Minor
Mathematics	Minor
Technology	Major/Minor
Theology/Study of Religions	Minor

SAMPLE COURSE STRUCTURE BACHELOR OF TEACHING/ BACHELOR OF ARTS



* Units can be used to extend your 1st or 2nd teaching area, or to gain accreditation to teach Religious Education.

FLEXIBLE STUDY PROGRAMS FOR INDIGENOUS AUSTRALIANS

These courses are offered in mixed mode. Students are required to attend compulsory residential schools on campus each semester and to complete coursework and assignments within their home communities. Academic support is available to students who require it through the Indigenous Tutorial Assistance Scheme (ITAS).

Pathway

ASSOCIATE DEGREE IN INDIGENOUS EDUCATION

Campus: Brisbane, Strathfield

Duration: 2.5 yrs FT

This course is designed for Indigenous Australians and provides a pathway into the Bachelor of Education (Primary) (Indigenous Studies). You will gain skills in education, focusing on the fields of literacy, mathematics and Indigenous culture.

Professional experience

Professional experience is compulsory and is taken in block periods. All students must obtain a Working With Children Check and Police Check, and a Senior First Aid Certificate may also be required.

Career options

This course will qualify you to work as an Aboriginal Education Assistant (AEA), in community liaison and as a community education counsellor. After completing this course you may choose to apply for the Bachelor of Education (Primary) (Indigenous Studies).

Entry requirements

A minimum of three years' work experience or completion of Year 12 (or equivalent) and demonstrated relevant tertiary study skills or completion of a Tertiary Communication Skills program.

BACHELOR OF EDUCATION (PRIMARY) (INDIGENOUS STUDIES)

Campus: Brisbane, Strathfield

Duration: 2.5 yrs FT plus Associate Degree in Indigenous Education (or equivalent)

Qualify as a generalist primary teacher with a particular focus on Indigenous education. You will have strengths in Indigenous culture and education, mathematics, literacy and science education. Students can also select a study pattern to meet the requirement to teach religious education.

Professional experience

Professional experience is compulsory and is taken in block periods. All students must obtain a Working With Children Check and Police Check, and a Senior First Aid Certificate may also be required.

Career options

You will be eligible to teach primary students in Catholic, independent and government schools. Possible careers include Indigenous education consultant, government policy professional, education administrator or group facilitator.

Entry requirements

Associate Degree in Indigenous Education.

BACHELOR OF TEACHING/BACHELOR OF ARTS (INDIGENOUS STUDIES)

Campus: Strathfield

Duration: 5 yrs FT

This course is designed for Indigenous students intending to become teachers in secondary schools and provides specialist training to work within schools with Aboriginal and Torres Strait Islander students. You will qualify to teach two secondary school disciplines – Indigenous studies, literature, history, society and culture, or religious education.

Professional experience

Professional experience is compulsory and is taken in block periods. All students must obtain a Working With Children Check and Police Check, and a Senior First Aid Certificate may also be required.

Career options

You will be eligible to teach secondary students in Catholic, independent and government schools, as well as TAFE, vocational education, community education centres, private colleges and special education settings.

Entry requirements

A minimum of three years' work experience and completion of any work related to a certificate or diploma requiring the application of tertiary study skills.

PATHWAYS *to all education courses*

CERTIFICATE IN EDUCATIONAL STUDIES

Campus: Ballarat, Brisbane, Canberra, Melbourne, Strathfield,

Duration: 0.5 yr FT (or equivalent PT)

A non-award, full-fee-paying course, it includes units from the first year of an education degree and provides an introduction to tertiary education in teaching. It does not provide teaching qualifications. However, the course may provide access to undergraduate teaching degrees where units are eligible for credit.

Recommended Year 12 studies

English, mathematics and science.

Entry requirements

Completion of Year 12 (or equivalent) with english and mathematics proficiency*.

ADVANCED CERTIFICATE IN EDUCATIONAL STUDIES

Campus: Ballarat, Brisbane, Canberra, Melbourne, Strathfield,

Duration: 0.5 yr FT (or equivalent PT)

This is a non-award course designed for students who have completed the Certificate in Educational Studies but have not achieved a place in the course of their preference. It enables students to continue their studies in education and mirrors part of the first year of

an undergraduate education course. This course does not provide teaching qualifications.

Recommended Year 12 studies

English, mathematics and science.

Entry requirements

Completion of Year 12 (or equivalent) with english and mathematics proficiency*.

* Admission rules apply, visit www.acu.edu.au/courses

**LUCY FLYNN
GRADUATE,
BACHELOR OF
NURSING/
GRADUATE
DIPLOMA IN
MIDWIFERY**

"I'm a midwife and registered nurse at the Mater Mother's Hospital in Brisbane, and studying at ACU really helped me get a foot in the door.

As well as having a great reputation, the lecturers are experts in their field and the course content is innovative and well-structured.

To be successful today you have to have the best foundation you can, and ACU health graduates are known for being practical, hard-working and clinically sound.

My job is wonderful and every day I get to help women and their families in what can be a very sad, stressful or happy time in their life. I recently helped deliver a set of twins and being a twin myself, this was a wonderful experience for me."



why study HEALTH SCIENCES *at acu?*

ACU | health
sciences

KNOWLEDGE:

ACU staff are actively involved in scholarship and research, and many are leading experts in their field. Health sciences at ACU has partnerships with key organisations and two dedicated research centres - the Centre of Physical Activity Across the Lifespan (CoPAAL) and the National Centre for Clinical Outcomes Research, Australia (NaCCOR).

FACILITIES:

Health sciences students at ACU benefit from state-of-the-art facilities and equipment, including nursing, anatomy, neurological and biomechanics laboratories.

PRACTICAL EXPERIENCE:

ACU provides its students with a range of clinical experiences with placements in hospitals and private practice in both urban and rural settings, as well as in specialist research centres affiliated with the University. Students also have the opportunity to take part in a diverse range of overseas study opportunities.

STAFF-STUDENT RATIO:

With approximately 6,000 students and 300 staff across six campuses, students work closely with the academics in the Faculty of Health Sciences.

DIVERSITY:

ACU offers a broad suite of programs in health sciences, from paramedicine and physiotherapy, to exercise science and midwifery. About a third of students enrolled in health sciences are from overseas, providing a culturally diverse learning environment.

BACHELOR OF EXERCISE AND HEALTH SCIENCE

Campus: Brisbane, Melbourne, Strathfield

Duration: 3 yrs FT (or equivalent PT)

The Bachelor of Exercise and Health Science focuses on the role and benefits of exercise and healthy lifestyles.

Qualify with a strong academic base in the exercise and health science disciplines of exercise physiology and nutrition, biomechanics, motor control and skill acquisition, and psychology of sport and exercise. Students have the opportunity to specialise in a range of elective choices including: coaching science, sports studies, health promotion, outdoor recreation and sports management.

Professional experience

You will undertake at least two units of compulsory professional experience throughout the duration of the course. In New South Wales, six professional experience units are prescribed by the state authority responsible for the registration of teachers. In Victoria and Queensland, students will undertake two

units that will cover all requirements of the state teacher registration authorities.

Accreditation

You will be eligible for membership with the Australian Council for Health, Physical Education and Recreation (ACHPER).

Career options

Graduates can teach personal development, health and physical education in secondary schools*, work as a fitness assessor or trainer, in health promotion, or as a health and fitness consultant in the public or corporate sector.

* After completing a postgraduate diploma in education (secondary).

Recommended studies NSW

English advanced, personal development, health and physical education, mathematics plus one of biology, chemistry or physics.

Entry requirements

Qld: English (4,SA); one of maths A,B or C, physics, chemistry, biology or physical education (4,SA).

Victoria: units 3 and 4 – a study score of at least 30 in English (ESL) or 25 in any other English, and a study score of at least 25 in one of mathematics (any), biology, chemistry, outdoor and environmental studies, psychology, physical education, health or physics.

Honours

BACHELOR OF EXERCISE AND HEALTH SCIENCE (HONOURS)

Campus: Brisbane, Melbourne, Strathfield

Duration: 1 yrs FT (or equivalent PT)

The Honours course is an in-depth academic program that will enable you to undertake an independent research project in exercise and health and physical activity across the lifespan using the knowledge and skills gained in the undergraduate program. You will have the opportunity to develop skills in research and prepare for higher degree studies at Masters and Doctoral level.

SAMPLE PROGRAM MAP - BACHELOR OF EXERCISE AND SPORTS SCIENCE

(Units vary between campuses and from year to year)

Year 1				
Semester 1	Health, Fitness and Performance	Psychology of Sport and Physical Activity	Human Biological Sciences 1	Growth, Motor Development and Ageing
Semester 2	Foundations of Exercise Science	Programming Resistance Training	Mechanical Bases of Exercise	Our World: Community and Vulnerability
Year 2				
Semester 1	Functional Anatomy	Research and Ethics in Exercise Science	Biomechanics	Exercise Physiology
Semester 2	Health and Exercise Psychology	Exercise Testing and Prescription	Nutrition and Exercise	Neural Bases of Human Movement
Hurdle ¹	Professional Experience Preparation			
Year 3				
Semester 1	Understanding Self and Society: Contemporary Perspectives	Advanced Motor Control & Learning	Elective 1	Elective 2
Semester 2	Professional Experience	Advanced Exercise Physiology	Exercise, Health and Disease	Elective 3

The Bachelors of Exercise and Health Science, and Exercise and Sports Science share a common first year. Subsequently in second and third years, the two degrees have some units and electives in common.

¹Hurdle requirement - 0 credit point unit

BACHELOR OF EXERCISE AND SPORTS SCIENCE

Campus: Brisbane, Melbourne, Strathfield

Duration: 3 yrs FT (or equivalent PT)

The Bachelor of Exercise and Sports Science focuses on the roles and benefits of exercise and healthy lifestyles. These are explored in the contexts of elite sport and recreational physical activity as well as community health and wellbeing.

Qualify with a strong academic base in exercise prescription, sports performance analysis and physical activity across the lifespan, in the context of the scientific principles of fitness and health and their application.

Professional experience

You will undertake two units of compulsory industry experience.

Accreditation

ACU is currently seeking accreditation for the Bachelor of Exercise and Sports Science from Exercise and Sports Science Australia (ESSA).

Career options

Graduates can work as health and fitness consultants, exercise scientists, sports scientists, sports coaches, and exercise physiologists*.

* After completing a postgraduate qualification in exercise physiology.

Honours

BACHELOR OF EXERCISE AND SPORTS SCIENCE (HONOURS)

Campus: Brisbane, Melbourne, Strathfield

Duration: 1 yr FT (or equivalent PT)

The Honours course is an in-depth academic program that will enable you to undertake an independent research project in exercise science and human performance in elite athletic, healthy, and clinical populations across the lifespan. You will have the opportunity to develop skills in research and prepare for higher degree studies at Masters and Doctoral level.

BACHELOR OF MIDWIFERY

Campus: Brisbane, Melbourne

Duration: 3 yrs FT (or equivalent PT)

Midwifery goes beyond the birth of babies. This course will enable you to be eligible for endorsement as an entry-level midwife according to the internationally defined role of the midwife. You will acquire the skills and knowledge to manage normal pregnancy and childbirth and provide effective postnatal maternal and newborn care in any maternity setting.

Professional experience

You will undertake a variety of clinical units throughout the course in maternity hospitals and community facilities. You will also have the opportunity to study a number of women during their pregnancies and undertake approved study overseas.

Accreditation

Graduates of the course will be eligible to apply for registration as a midwife with the Nursing and Midwifery Board of Australia under the auspices of the Australian Health Practitioners Registering Authority (AHPRA).

Career options

Graduates can pursue a range of careers including: midwife, consultant midwife, clinical specialist, pre-natal educator, researcher, family care unit or child health centre professional.

Entry requirements

Qld: English (4, SA).

Victoria: units 3 and 4 - a study score of at least 30 in English (ESL) or 25 in any other English.

* Admission rules apply, visit www.acu.edu.au/courses

Honours

BACHELOR OF MIDWIFERY (HONOURS)

Campus: Brisbane, Melbourne

Duration: 1 yr FT (or equivalent PT)

This course is designed to enhance your ability to interpret midwifery evidence as a basis to inform practice, policy, guidelines and decision-making. You will also develop skills in undertaking research and prepare for higher degree studies at Masters and Doctoral level.

SAMPLE PROGRAM MAP - BACHELOR OF MIDWIFERY

(Units vary between campuses and from year to year)

Year 1				
Semester 1	Beginning Professional Practice	Human Biological Science 1	Inquiry in Health Care	Beginning the Journey
Semester 2	Human Biological Science 2	Our World: Community and Vulnerability	The Childbearing Journey	Clinical Midwifery Practice 1
Year 2				
Semester 1	Society Culture and Health	Therapeutics in Midwifery	Being with Birthing Women	Clinical Midwifery Practice 2
Semester 2	Health Care Ethics	Perinatal Mental Health	Care of Women with Complex Needs	Clinical Midwifery Practice 3
Year 3				
Semester 1	Understanding Self and Society: Contemporary Perspectives	Feeding Babies	Babies Needing Extra Care	Caring for Babies
Semester 2	Transition to Midwifery Practice	Global Perspectives on Midwifery	Clinical Midwifery Practice 4	

BACHELOR OF OCCUPATIONAL THERAPY

Campus: Melbourne, Sydney*

Duration: 4 yrs FT (or equivalent PT)

Occupational therapists promote health and wellbeing through engagement and re-engagement in an occupation. You will gain the skills and knowledge to enhance the ability of people with impairments to body structure or function, and who experience physical, emotional or social disability, to adapt to and cope with, the demands, tasks and activities of their daily lives.

Professional experience

It is embedded throughout the course.

Accreditation

ACU's Bachelor of Occupational Therapy course is being developed in line with requirements for accreditation through Occupational Therapy Australia and for recognition by the World Federation of Occupational Therapists.

Career options

Work in hospitals, community health centres, rehabilitation centres or private practice, mental health centres, work and accident rehabilitation, schools or early

intervention centres for children, nursing homes and aged care facilities, government policy units or in consultative services.

Entry requirements

Victoria: a study score of at least 30 in English (ESL) or 25 in any other English; and a study score of at least 25 in one of Biology, Chemistry, Physics, Physical Education or Health and Human Development.

NSW: English advanced and at least one of Biology, Chemistry, Physics, or Personal Development, Health & Physical Education.

* Subject to approval

SAMPLE PROGRAM MAP - BACHELOR OF OCCUPATIONAL THERAPY

Year 1				
Semester 1	The Person, Health, and Wellbeing	Human Biological Science 1	Foundations of Occupational Therapy (F)	Health and Occupation (F)
Semester 2	Musculoskeletal Structure and Function	Our World: Community and Vulnerability	Pathophysiology for Occupational Therapists	Measurement in Occupational Therapy (CP)
Year 2				
Semester 1	Neurodevelopment	Contextual Determinants of Health, Illness and Disability (F)	Ergonomics and Safety Science 1 (F)	Physical Rehabilitation
Semester 2	Environment Health and Disability (F)	Neuropsychiatry 1	Ergonomics and Safety Science 2 (F)	Orthoses and Rehabilitation Science
Year 3				
Semester 1	Neuroscience for Occupational Therapists 1 (F)	Neuropsychiatry 2 (F)	Paediatrics	Clinical Education 1 (CP)
Semester 2	Neuroscience for Occupational Therapists 2 (F)	Research Design for Occupational Therapists	Clinical Counselling and Group Work	Clinical Education 2 (CP)
Year 4				
Semester 1	Gerontology (F)	Clinical Education 3 (CP)		
Semester 2	Allied Health Management and Leadership	Community-based Rehabilitation and Development	Advanced Occupational Therapy Practice	Clinical Education 4 (CP)

(F) - contains fieldwork (CP) - clinical placements

BACHELOR OF PARAMEDICINE

Campus: Melbourne

Duration: 3 yrs FT (or equivalent PT)

The demands placed on paramedics providing pre-hospital care provision have increased dramatically in recent years. This course will equip you with the skills to be able to analyse situations using the appropriate assessment techniques, and to examine patients whilst considering their particular needs. Reasoning and problem-solving skills will also be taught, enabling students to cope in high-pressure environments.

Professional experience

Students are required to undertake eight units of paramedic practice in a variety of health care settings.

Students will be required to satisfy the Ambulance Victoria medical and physical capacity assessment prior to undertaking clinical placement in an emergency pre-hospital care setting.

Accreditation

Graduates will be eligible for employment as a paramedic in ambulance services in Australia and in some international ambulance or health organisations. With further study, qualified paramedics may go on to become intensive-care paramedics (ICPs), team leaders, clinical instructors, ambulance service managers, specialist educators, flight paramedics or special operations team (SOT) rescue paramedics.

Career options

Graduates work generally outside the hospital environment, providing appropriate health care following a medical or trauma emergency. They can work with an emergency ambulance service in Australia, and in some international ambulance or health organisations.

Entry requirements

Victoria: units 3 and 4 – a study score of at least 30 in English (ESL) or 25 in any other English.

SAMPLE PROGRAM MAP - BACHELOR OF PARAMEDICINE

Year 1				
Semester 1	Beginning Professional Practice	The Person, Health and Wellbeing	Human Biological Science 1	Foundations of Paramedic Practice
Semester 2	Human Biological Science 2	Health Assessment	Our World: Community and Vulnerability	Paramedic Practice: Respiratory Emergencies
Year 2				
Semester 1	Inquiry in Health Care	Society Culture and Health	Paramedic Practice: Cardiovascular	Paramedic Practice: Neurological Emergencies
Semester 2	Mental Health and Illness	Traumatology in Paramedicine	Paramedicine Practice: Traumatology	Paramedic Practice Mental Health
Year 3				
Semester 1	Paramedic Practitioner Health	Environmental and Endocrine Emergencies	Synergy in Paramedic Practice	Paramedic Practice: Gastroenterology and Renal Emergencies
Semester 2	Health Care Ethics	Pre-Hospital Major Incident Management	Paramedic Practice: Emergency Department	Paramedic Practice: Obstetric and Paediatric Emergencies

BACHELOR OF SPEECH PATHOLOGY*

Campus: Brisbane, Melbourne, Sydney
Duration: 4 yrs FT (or equivalent PT)

Speech pathologists are trained to assess and manage disorders of communication. The Bachelor of Speech Pathology encompasses all aspects of communication including speech, writing, reading, signs, symbols and gestures. Speech pathologists study the theoretical and practical aspects of speech, hearing, language, voice and difficulties in swallowing and feeding. The ACU course is designed to expose

students to speech pathology practice from the first year of the degree.

Professional experience

Clinical placement commences in the first year. In the fourth and final year, it is a major component of the course.

Accreditation

Graduates will be eligible for membership of Speech Pathology Australia (SPA).

Career options

Graduates will work with people of all ages and in a range of settings including in public and private hospitals, in acute

care and outpatient facilities, schools and community health centres.

Entry requirements

Victoria: a study score of at least 30 in English (ESL) or 25 in any other English; and a study score of at least 25 in one of Biology, Chemistry, Physics, Physical Education or Health and Human Development.

NSW: English advanced and at least one of Biology, Chemistry, Physics, or Personal Development, Health & Physical Education.

Qld: English (4, SA), and one of Biology, Chemistry, Physics or Health and Physical Education (4, SA)

* Subject to approval

SAMPLE PROGRAM MAP - BACHELOR OF SPEECH PATHOLOGY

(Units vary between campuses and from year to year)

Year 1				
Semester 1	Human Biological Science	The Person Health & Wellbeing	Development & Communication Across the Lifespan	Introduction to Speech Pathology Practice
Semester 2	Our World: Community and Vulnerability	Anatomy and Physiology for Speech Pathology	Linguistics & Phonetics for Speech Pathology Practice	Evidence Based Speech Pathology Practice
Year 2				
Semester 1	Neuroscience for Speech Pathology	Language Disorders 1 (Developmental)	Language Disorders 2 (Acquired)	Beginning Speech Pathology Practice
Semester 2	Speech Disorders 1 (Developmental)	Speech Disorders 2 (Acquired)	Multimodal Communication	Assessment in Speech Pathology Practice
Year 3				
Semester 1	Society Culture and Health	Voice Disorders	Swallowing and feeding across the lifespan	Challenges in Speech Pathology Practice
Semester 2	Health Care Ethics	Audiology & Aural Rehabilitation for Speech Pathology	Disorders of Fluency	Special Populations in Speech Pathology Practice
Year 4				
Semester 1	Understanding Self and Society: Contemporary Perspectives		Transcultural Speech Pathology Practice	
Semester 2	Transition to Professional Speech Pathology Practice		Consolidating Speech Pathology Practice	



JAMES SIKKEMA
BACHELOR OF PHYSIOTHERAPY

“ACU was my choice because of its established reputation in the health sciences, strong industry links, and high graduate employment rate. We go on clinical placements in our very first year, and the facilities are brand new and state-of-the-art.”

BACHELOR OF PHYSIOTHERAPY

Campus: Brisbane, North Sydney
Duration: 4 yrs FT (or equivalent PT)

Play a part in the prevention of injury and disability, and rehabilitate injured patients. As a physiotherapist you will be involved in the identification, assessment and treatment of individuals with musculoskeletal, cardiorespiratory, orthopaedic and neurological conditions across the lifespan from paediatrics to gerontology, including gender specific health issues. This course will equip you with the skills to practise as a competent physiotherapist, in a variety of settings from hospitals and community facilities to private practice. You will acquire

knowledge and skills in areas that include manual therapy, exercise prescription, pain and self-management strategies.

Professional experience

Students are required to undertake clinical placements to develop skills and competencies within a clinical setting.

Accreditation

Graduates will be eligible for registration with the Australian Health Practitioner Regulation Agency (AHPRA). Graduates will also be eligible for membership of the Australian Physiotherapy Association.

Career options

Work in a variety of areas including rehabilitation, paediatrics, women’s

health, sports physiotherapy, cardiorespiratory, orthopaedics, gerontology and ergonomics, hospitals and rehabilitation units, community health centres and/or private practice.

Graduates can also work as consultants in educational, government and industrial institutions, and conduct research that contributes to the knowledge base of the profession.

Entry requirements

Qld: English (4, SA); plus one of biology, chemistry or physics (4, SA).

NSW: English (any); plus one of biology, chemistry or physics.

SAMPLE PROGRAM MAP - BACHELOR OF PHYSIOTHERAPY

Year 1				
Semester 1	Physiotherapy Anatomy 1	Human Biological Science 1	The Person, Health and Wellbeing	Foundations of Physiotherapy Practice 1
Semester 2	Physiotherapy Anatomy 2	Human Biological Science 2	Society, Culture and Health	Foundations of Physiotherapy Practice 2
Year 2				
Semester 1	Physiotherapy Pathophysiology 1	Physiotherapy Pathophysiology 2	Movement Science and Practice 1	Musculoskeletal Science and Practice 1
Semester 2	Clinical Exercise Physiology for Physiotherapists	Cardiorespiratory Science and Practice 1	Movement Science and Practice 2	Musculoskeletal Science and Practice 2
Year 3				
Semester 1	Cardiorespiratory Science and Practice 2	Neurological Science and Practice 1	Musculoskeletal Science and Practice 3	Physiotherapy Practice 1
Semester 2	Health Care Ethics	Neurological Science and Practice 2	Paediatric Physiotherapy Practice	Physiotherapy Practice 2
Year 4				
Semester 1	Physiotherapy Clinic 1	Physiotherapy Clinic 2	Physiotherapy Clinic 3	Physiotherapy Practice 3
Semester 2	Physiotherapy Clinic 4	Physiotherapy Clinic 5	Physiotherapy Clinic 6	Physiotherapy Practice 4

BACHELOR OF APPLIED PUBLIC HEALTH

Campus: Brisbane, Melbourne, North Sydney

Duration: 3 yrs FT (or equivalent PT)

Public health is the science and art of preventing disease, prolonging life and promoting health via sustainable improvements to social and political systems. Over the past century, the practice of public health has made significant incremental advances to health on a grand scale. It comprises a set of comprehensive and collaborative activities, ecological in perspective and intersectoral in scope, including environmental, economic, technical, educational and legislative measures. The Bachelor of Applied Public Health is an entry qualification giving graduates the skills and insight to improve population health, to a handful of people or across several continents, by applying a rigorous evidence-based approach to understand disease determinants and plan effective solutions through policy and legislation, advocacy, and the development and management of health programs for populations, communities and individuals.

Professional experience

The course incorporates up to 300 hours of professional placements, concentrated in the third year of the course. Some placements will be available during summer recess, and there are opportunities for interstate or international experience.

Career options

Graduates can work in roles including public health officer, community development worker, epidemiologist, policy analyst, program evaluator, health educator, project officer and consumer advocate.

Such roles exist in both the public and private sectors including state and federal health departments, population health units, community health centres, and divisions of general practice, local government, non-governmental health organisations (NGOs), advocacy groups and international health agencies.

The Bachelor of Applied Public Health is an entry-level qualification, and graduates from such programs often pursue postgraduate study and training to enable specialisation and advanced practice.

Entry requirements

NSW: 2 units of English (any).

Qld: English (4, SA).

Victoria: units 3 and 4 – a study score of at least 30 in English (ESL) or 25 in any other English.

SAMPLE PROGRAM MAP - BACHELOR OF APPLIED PUBLIC HEALTH

Year 1				
Semester 1	Foundations of Applied Public Health	Principles of Evidence-Based Health Care	The Person, Health and Wellbeing	Effective Communication
Semester 2	Understanding Statistics	Foundations of Health Promotion	Globalisation, Environment and Health	Our World: Community and Vulnerability
Year 2				
Semester 1	Social and Economic Determinants of Health	Epidemiology and Applied Statistics	Public Health Ethics	Public Health Policy
Semester 2	Project Management	Health Program Planning	Public Health Economics	Understanding Self and Society: Contemporary Perspectives
Year 3				
Semester 1	Public Health Law	Community Engagement	Research Transfer in Public Health Practice	Applying Public Health in Practice
Semester 2	Communication in Public Health	Leadership in Public Health	Public Health Research Project (Integration Project)	

BACHELOR OF NURSING

Campus: Ballarat, Brisbane, Canberra, Melbourne, North Sydney
Duration: 3 yrs FT (or equivalent PT)

ACU is the largest provider of graduate nurses in Australia. With increased emphasis on national and state health priorities, you will be well-prepared to meet current and future health needs of the community. As a professional you will be proactive and adaptable, a competent, safe and ethical clinician, a creative and critical thinker, an informed consumer of practice evidence and an independent lifelong learner. Learner-centred approaches, including enquiry and situation-based learning, will enhance your learning experience and readiness for the workplace.

You will choose a clinical nursing specialty in your final semester that is linked with industry in an area of workforce need, such as medical/surgical nursing, perioperative nursing, high

dependency nursing, palliative care, aged care, paediatrics, maternal and infant care, mental health or community nursing. The on-campus nursing laboratories for student clinical learning are widely recognised as state-of-the-art nursing simulation laboratories.

Professional experience

You will undertake six clinical placements in a variety of health care environments.

Accreditation

Graduates are eligible to apply for registration as a nurse with the Nursing and Midwifery Board of Australia.

Career options

As a registered nurse graduates can pursue a career in a range of settings including medical/surgical nursing, paediatric nursing, aged care, community care, developmental and disability care, maternal and infant care, emergency and critical care, operating theatres, nursing education and administration.

Entry requirements

Qld: English (4, SA).

Victoria: units 3 and 4 - a study score of at least 30 in English (ESL) or 25 in any other English.

Assumed knowledge NSW and ACT: nil.

Honours

BACHELOR OF NURSING (HONOURS)

Campus: Ballarat, Brisbane, Canberra, Melbourne, North Sydney
Duration: 1 yr FT (or equivalent PT)

This course will prepare you with research training to make a contribution to scholarship and evidence-based nursing practice. You will have the opportunity to interact in, explore and analyse critically a specialist area of nursing or related topics from the theoretical and professional perspective, and conduct and report on a creative and analytical study in the form of a thesis.

SAMPLE PROGRAM MAP - BACHELOR OF NURSING

(Units vary between campuses and from year to year)

Year 1				
Semester 1	Beginning Professional Practice	The Person, Health and Wellbeing	Human Biological Science 1	Inquiry in Health Care
Semester 2	Human Biological Science 2	Health Assessment	Our World: Community and Vulnerability	Introduction to Nursing Practice
Year 2				
Semester 1	Society Culture and Health	Mental Health and Illness	Child, Adolescent, and Family Nursing	Clinical Integration: Mental Health
Semester 2	Health Care Ethics	Acute Care Nursing 1	Promoting Health in Extended Care	Clinical Integration: Acute Care
Year 3				
Semester 1	Understanding Self and Society: Contemporary Perspectives	Acute Care Nursing 2	Partnerships in Chronicity	Clinical Integration: Complex Care
Semester 2	Transition to Professional Nursing	Nursing Clinical Specialty Practice Elective	Clinical Integration: Towards Professional Practice	

BACHELOR OF NURSING (PRACTICE LEADERSHIP)

Campus: Ballarat, Brisbane, Canberra, Melbourne, North Sydney
Duration: 3 yrs FT (or equivalent PT)

The Practice Leadership stream is designed to extend the Bachelor of Nursing course outcomes for students with outstanding academic ability and leadership potential through additional learning opportunities including mentoring in scholarship and practice

leadership. In addition, graduates of the Bachelor of Nursing (Practice Leadership) stream will be able to:

- demonstrate enhanced leadership skills in nursing practice
- promote evidence based practice in changing health care contexts
- actively contribute to practice development and innovation.

The Practice Leadership stream has the same structure as the Bachelor of Nursing, with eight units in the Nursing Theory and Clinical Practice strands extended with additional learning outcomes and associated required learning activities. These units are in the second and third years of the course.

BACHELOR OF NURSING (MENTAL HEALTH)

Campus: Ballarat, Brisbane, Canberra,
Melbourne, North Sydney

Duration: 3 yrs FT (or equivalent PT)

Under the national nursing registration scheme which came into effect in 2010, there is no longer mental health endorsement for registered nurses. While the Bachelor of Nursing prepares graduates to work in a range of health settings including

mental health, the health industry is seeking graduates who have received additional preparation for mental health nursing for entry to practice. Students undertaking the Mental Health specialisation will focus their theory and clinical placement in the area of mental health nursing without an increase in the total number of hours required to complete the Bachelor of Nursing degree. The Mental Health stream is designed to provide such graduates and consists of 70 credit points (6 units) of

mental health specialisations including 3 mental health units in third year to provide a strong mental health focus.

Dual degrees

BACHELOR OF NURSING/ BACHELOR OF BUSINESS ADMINISTRATION*

Campus: Brisbane, Melbourne,
Strathfield

Duration: 4.5 yrs FT (or equivalent PT)

The Bachelor of Nursing/Bachelor of Business Administration will prepare graduates to meet the evolving business management expectations of our health services. The health industry is changing at a great pace and the role of the registered nurse with it. Registered nurses are increasingly moving from bedside practice into middle management roles early in their careers and are expected to take leadership roles in multi-disciplinary teams. In the wide range of practice settings, from hospitals to aged care, general practice, private practice and the community, health is increasingly seen as a business, and nurses are required to contribute to the success of that business through effective management of staff and financial resources.

Students will complete 360 credit points, consisting of 210 credit points of Bachelor of Nursing units and 150 credit points of Bachelor of Business Administration units.

Professional experience

Students will undertake six clinical placements in a variety of health care environments.

Accreditation

Graduates will be eligible to apply for registration as a nurse with the Nursing and Midwifery Board of Australia under the auspices of the Australian Health Practitioner Regulation Agency (AHPRA).

Career options

Graduates will find careers in government and/or private hospitals, management, education and research, health promotion, and a wide range of occupations that require an understanding of business processes.

BACHELOR OF NURSING/ BACHELOR OF PARAMEDICINE

Campus: Ballarat, Brisbane, Canberra
Duration: 4 yrs FT (or equivalent PT)

As a professional nurse and paramedic, you will be proactive and adaptable, a competent and ethical clinician, a creative and critical thinker and an independent lifelong learner. Learner-centred approaches, including enquiry and situation-based learning, will enhance your learning experience and readiness for the workplace. With an increased emphasis on national and state health priorities, graduates will be well prepared to meet current and future health needs of the community in both nursing and paramedical settings.

Professional experience

You will undertake six units of nursing practice and three units of paramedicine

practice in a variety of health care environments.

Students will be required to satisfy the relevant State Ambulance Authority medical and physical capacity assessment prior to undertaking clinical placement in an emergency pre-hospital care setting.

Accreditation

Graduates are eligible to apply for registration as a Registered Nurse with the Nursing and Midwifery Board of Australia and work as an accredited paramedic. With further study, qualified paramedics may progress to become intensive-care paramedics (ICPs), team leaders, clinical instructors, ambulance service managers, specialist educators, flight paramedics or special operations team (SOT) rescue paramedics.

Career options

Graduates can pursue a range of careers in Australia and overseas as a registered nurse, maternal and infant carer, medical dispatcher, medical/surgical nurse, mental health nurse, paediatric nurse, paramedic nurse, accident and emergency nurse, aged carer, clinical supervisor, community carer, developmental disability carer, and trainer.

* Subject to approval

**PROFESSOR
GREG CRAVEN
ACU
VICE-CHANCELLOR**

"As a constitutional lawyer, it gives me great pleasure to see ACU adding a law program to its already impressive suite of offerings.

The four-year degree will be unique in that it will draw upon the experience of prestigious Catholic law schools around the world. The course will also be Australia's first truly national legal curriculum.

I look forward to seeing the University produce a generation of lawyers equipped with the legal knowledge and practical skills to handle the demands of 21st century practice – and the sense of ethics needed to put their skills to good use."



why study **LAW** *at acu?*

ACU||law

LEADING RESEARCH:

ACU has already made its mark in research, achieving world standard results - with a rating of 3 - in the discipline of law in the Federal Government's Excellence in Research Australia initiative. Significant ongoing investment in research will ensure you remain inspired by our leading academics and researchers sourced from around the world.

EMPLOYMENT RATES:

ACU graduates are high achievers and enjoy one of the best rates of employment in Australia, with many finding jobs even before they have graduated.

FACILITIES:

The law degree will be offered through a newly established Faculty of Law equipped with state-of-the-art facilities, including a law library and moot court. It will be delivered by academics of renown and class sizes will be capped to ensure students enjoy an optimal educational experience.

DUAL DEGREES:

Students are able to undertake a law degree alone, or combine law with a degree in business administration, commerce, arts, global studies or theology. Dual degrees are a great way to broaden your knowledge base, and tailor your education for better employment options.

PROFESSIONAL RECOGNITION:

ACU's law program has been designed specifically to prepare students for entry into the legal profession and to ensure that graduates are well-grounded in the areas of law relevant to legal practice. Recognising the role lawyers can play in international commerce and relations, ACU's course also has a distinctive international flavour. This combination will produce a generation of first class lawyers, equipped with the legal knowledge and practical skills to handle the demands of 21st century practice.

BACHELOR OF LAWS

Campus: Melbourne, North Sydney*
Duration: 4 yrs FT (or equivalent PT)

This course will equip you with the legal knowledge and practical skills to handle the demands of 21st century practice. It will develop your ethical skills and an appreciation of the law's interaction with other disciplines and its international dimensions. The course has been developed with a professional focus to prepare you for entry into the legal profession.

Professional experience

You must complete a minimum of 80 hours pro bono experience during the course. This will be completed during two legal professional experience units and one community engagement unit.

Accreditation

You will be eligible for accreditation from the Council of Legal Education (CLE) and entitled to apply for admission to professional legal practice in Victoria or NSW.

Career options

Graduates can pursue a range of legal careers including working as a lawyer in private practice, the public service, a legal aid office, or as in-house counsel for a corporation. Completing a law degree is also excellent preparation for pursuing a career in a wide variety of other areas such as business, the media, politics and public administration.

Dual degrees

BACHELOR OF BUSINESS ADMINISTRATION/ BACHELOR OF LAWS

Campus: Melbourne, North Sydney*
Duration: 5 yr FT (or equivalent PT)

There is a high demand from law firms, and public and private sector organisations for graduates with dual degrees in business and law. Qualify from this degree with a general understanding of modern business and also the required knowledge and skills to become a legal practitioner. While exploring the important interface between law, business and policy administration, the program teaches ethical decision-making and social responsibility.

Professional experience

You must complete a minimum of 80 hours pro bono experience during the course. This will be completed during four legal professional experience units and one community engagement unit.

Accreditation

You will be eligible for accreditation from the Council of Legal Education (CLE) and entitled to apply for admission to professional legal practice in Victoria or NSW.

Career options

Graduates can pursue a range of legal careers including working as a lawyer in private practice, the public service, a

legal aid office, or as in-house counsel for a corporation. Completing a Business Administration/Law dual degree is also excellent preparation for pursuing a career in a wide variety of other areas such as business, politics and public administration.

BACHELOR OF THEOLOGY/ BACHELOR OF LAWS

Campus: Melbourne, North Sydney/
Strathfield*

Duration: 5 yr FT (or equivalent PT)

This unique dual degree will provide you with an education in law that is informed by the range of values specific to the Christian tradition, and an education in theology orientated to the professional values and practice of law. This course has a focus on ethical behaviour, social justice and the common good to produce professionally skilled graduates prepared for legal practice with an appreciation of the law's interaction with theology.

Professional experience

You must complete a minimum of 80 hours pro bono experience during the course. This will be completed during four legal professional experience units and one community engagement unit.

Accreditation

You will be eligible for accreditation from the Council of Legal Education (CLE) and entitled to apply for admission to professional legal practice in Victoria or NSW.

Career options

Graduates can pursue a range of legal careers including working as a lawyer in private practice, the public service, a legal aid office, or as in-house counsel for a corporation. Completing a Theology/Law dual degree is also excellent preparation for pursuing a career in a wide variety of other areas such as public administration, chaplaincy, pastoral work, teaching and research, and the study of religion.

BACHELOR OF ARTS/ BACHELOR OF LAWS

Campus: Melbourne, North Sydney/
Strathfield*

Duration: 5 yr FT (or equivalent PT)

This course aims to develop ethical and professionally skilled graduates with a breadth of knowledge in areas relevant to legal practice and an appreciation of the law's interaction with other disciplines and its international dimensions. This course offers a wide variety of electives including legal studies in marketing, intellectual property, taxation and health.

Professional experience

You must complete a minimum of 80 hours pro bono experience during the course. This will be completed during four legal professional experience units and one community engagement unit.

Accreditation

You will be eligible for accreditation from the Council of Legal Education (CLE) and entitled to apply for admission to professional legal practice in Victoria or NSW.

Career options

Graduates can pursue a range of legal careers including working as a lawyer in private practice, the public service, a legal aid office, or as in-house counsel for a corporation. Completing an Arts/Law dual degree is also excellent preparation for pursuing a career in a wide variety of other areas such as foreign affairs, the media, education and public administration.

BACHELOR OF LAWS/ BACHELOR OF GLOBAL STUDIES

Campus: Melbourne, North Sydney/
Strathfield*

Duration: 5 yr FT (or equivalent PT)

This unique dual degree aims to develop an awareness of the broader context within which legal issues arise including political, historical, philosophical and economic dimensions. Studies include global health, change and development, and environmental sustainability within a legal framework.

Professional experience

You must complete a minimum of 80 hours pro bono experience during the course. This will be completed during three legal professional experience units and one community engagement unit.

Accreditation

You will be eligible for accreditation from the Council of Legal Education (CLE) and entitled to apply for admission to professional legal practice in Victoria or NSW.

Career options

Graduates can pursue a range of legal careers including working as a lawyer in private practice, the public service, a legal aid office, or as in-house counsel for a corporation. Completing a Law/Global Studies dual degree is also excellent preparation for pursuing a career in a wide variety of other areas such as foreign affairs, the media, education, international relations, the not-for-profit sector and public administration.

BACHELOR OF COMMERCE/ BACHELOR OF LAWS

Campus: Melbourne, North Sydney*

Duration: 5 yr FT (or equivalent PT)

The regulation of commerce and business is becoming increasingly complex and multi-layered. This course prepares students for the increasing interface between commerce and law. The dual degree offers an insight into frameworks, institutions and rule-making processes in everyday commercial activity. Formal training in commerce, accounting and law will differentiate graduates in this highly competitive marketplace.

Professional experience

You must complete a minimum of 80 hours pro bono experience during the course. This will be completed during four legal professional experience units and one community engagement unit.

Accreditation

You will be eligible for accreditation from the Council of Legal Education (CLE) and entitled to apply for admission to professional legal practice in Victoria or NSW.

Career options

Graduates can pursue a range of legal careers including working as a lawyer in private practice, the public service, a legal aid office, or as in-house counsel for a corporation. Completing a Commerce/Law dual degree is also excellent preparation for pursuing a career in a wide variety of other areas such as accounting, foreign affairs, banking and finance, business, the media and public administration.

* Melbourne Campus only in 2013;
Sydney campuses in 2014 subject to approval.



**DANIEL NELSON
GRADUATE,
BACHELOR OF
THEOLOGY**

“Studying theology at ACU gave me the literacy and research skills I needed, and reaffirmed my core values.

I now work for ACU’s Institute for Advancing Community Engagement – organising community work experience opportunities for current students. I love my job and the best part is hearing students reflect on how their time in the community was both academically and professionally enriching.

During my studies I was always impressed by the passion and energy of the lecturers, and the many opportunities to get involved in campus life.

I was also awarded a scholarship for my service to the community in my second year, which was really encouraging. ACU is a great place and I’m proud to have studied there and still be involved in the University’s work.”



why study **THEOLOGY & PHILOSOPHY** *at acu?*

ACU | **theology and
philosophy**

TACKLING THE BIG QUESTIONS:

Both theology and philosophy ask the big questions of life: Where have we come from? What is the purpose of existence? Together these disciplines provide a rich set of resources for the search for meaning and purpose in life.

RESEARCH SUCCESS:

The faculty has a strong research profile, nationally and internationally, and enjoys collaborative relationships with scholars around the world. Alongside research strengths in theology and biblical studies, there are four research centres focusing on contemporary Catholic thought, early Christianity, moral philosophy (ethics), philosophy of religion and philosophical theology.

TEACHING & LEARNING EXCELLENCE:

Many of our theologians and philosophers have international reputations as scholars and teachers, and all are dedicated to quality teaching and enhancing the learning experience.

CATHOLIC:

As a Catholic university, we are enthusiastic about teaching biblical studies, theology, liturgy, Christian ethics and philosophy, and are committed to fostering a deep appreciation of the Christian tradition.

EMPLOYMENT OPPORTUNITIES:

Theology teaches critical reasoning and the close analysis of texts. Graduates in the discipline can pursue a range of careers in areas such as teaching, work in church agencies and ministries, chaplaincy, social inclusion, pastoral work, and social work. They can also pursue careers in other areas that utilise the skills they have acquired in their degree, such as research, journalism and media, administration, and public relations.

The prerequisite to all Theology and Philosophy courses is completion of Year 12 (or equivalent) with English proficiency. Admission rules apply, visit www.acu.edu.au/courses

BACHELOR OF THEOLOGY

Campus: Brisbane, Canberra, Melbourne, Strathfield

Duration: 3 yrs FT (or equivalent PT)

You can pursue an in-depth program of studies in scripture, theology and philosophy, or choose a broader-based program that includes studies in other disciplines such as liberal arts, business or psychology. You will undertake a critical and detailed examination of Christian thought and practice, gaining insight into the history of Christianity, as well as the breadth of current theological scholarship.

Professional experience

Students undertake a unit of Christian Community Experience, which involves active engagement.

Career options

Graduates in theology can pursue a range of careers in areas such as teaching, work in church agencies and ministries, chaplaincy, social inclusion, pastoral work, and social work. They can also pursue careers in other areas that utilise the skills they have acquired in their degree such as research, journalism and media, administration and public relations.

Further study

A range of further studies is potentially open to graduates such as professional studies in teaching or social work, or higher degrees in theology.

Honours

BACHELOR OF THEOLOGY (HONOURS)

Campus: Brisbane, Canberra, Melbourne, Strathfield

Duration: 1 yr FT (or equivalent PT)

The Honours course includes coursework and writing a thesis, and allows you to specialise in a particular area and equips you for further study.

Further study

A range of further studies is potentially open to graduates, such as professional studies in teaching or social work, or higher degrees in theology.

Pathways

CERTIFICATE IN THEOLOGY

Campus: Brisbane, Canberra, Melbourne, Strathfield, Ballarat (PT only)

Duration: 0.5 yr FT (or equivalent PT)

This is a non-award, UniAccess-Australia program. Students have the opportunity to pursue theology at an introductory level. After completing this course, a student may choose to apply for a place in the Bachelor of Theology.

DIPLOMA IN THEOLOGY

Campus: Brisbane, Canberra, Melbourne, Strathfield, Ballarat (PT only)

Duration: 1 yr FT (or equivalent PT)

In this course students have the opportunity to pursue an introductory program of studies in scripture, theology and philosophy. After completing this course, a student may choose to apply for a place in the Bachelor of Theology.

SAMPLE PROGRAM MAP -BACHELOR OF THEOLOGY

(Units vary between campuses and from year to year)

Year 1				
Semester 1	Major 1	Minor 1	Minor 1	Liberal Arts 1
Semester 2	Major 2	University Core 1	Minor 2	Liberal Arts 2
Year 2				
Semester 1	Major 3	Minor 2	Minor 3	Liberal Arts 3
Semester 2	Major 4	Minor 3	Minor 4	Liberal Arts 4
Year 3				
Semester 1	Major 5	Minor 4	Liberal Arts 5	Liberal Arts 6
Semester 2	Major 6	University Core 2	Liberal Arts 7	Liberal Arts 8

For more information please see www.acu.edu.au/349841 or contact Vasilija.Tsiambazis@acu.edu.au

KIMBERLEY DEVER
BACHELOR OF THEOLOGY

"I initially chose ACU because I wanted an arts degree that had character and conscience. After falling in love with a biblical archaeology unit I decided to transfer to the straight Bachelor of Theology.

Theology is not just about the Bible, or about converting people. It's about understanding people. Theology at ACU is not necessarily religious, but it has given me a nice balance to my own faith. Through the course I have gained enormously by meeting people from a variety of denominations and walks of life. You don't have to be Catholic, just open.

After a visit to see the careers team I've also realised that there are many career options in theology - hospital chaplaincy is one area which really interests me."

Dual degrees

BACHELOR OF THEOLOGY/ BACHELOR OF SOCIAL WORK

Campus: Brisbane, Canberra, Strathfield
Duration: 4 yrs FT (or equivalent PT)

This unique dual degree will provide you with an education in social work that is informed by the range of values specific to the Christian tradition, and an education in theology that is orientated to the professional values and practice of the social work profession. You will engage in critical reflection on the theological tradition of the Church and its relationship to social work theory and practice.

Eligibility requirements

The requirements for admission to the Bachelor of Social Work are met through the completion of the study of a mainly theological curriculum for two years.

Accreditation

Graduates of the program are eligible for membership of the Australian Association of Social Workers (AASW).

Career options

Graduates in theology can pursue a range of careers in areas such as teaching, work in church agencies and ministries, chaplaincy, social inclusion, pastoral work and social work. They can also pursue careers in other areas that utilise the skills they have acquired in their degree such as research, journalism and media, administration and public relations.

BACHELOR OF THEOLOGY/ BACHELOR OF GLOBAL STUDIES

Campus: Melbourne or Strathfield and one semester (40cp) abroad. In order to satisfy funding regulations, the overseas internship needs to be undertaken during the third year of study.
Duration: 4 yrs FT (or equivalent PT)

Globalisation affects economies, lifestyles, societies and politics. While it has had a disastrous effect on some economies, and therefore on lives, some effects have been positive as interconnectedness opens up opportunities for greater solidarity between people. The Bachelor of Global Studies is designed to provide high-achieving students with an informed international perspective that will be valued in the global workplace. Students enrolling in double degrees, which include the Bachelor of Global Studies, will have the opportunity to learn about the social, political, cultural, environmental and economic changes that are shaping the world and combine this knowledge with a period of study abroad at one of more than 60 partner institutions around the world. As an alternative to studying abroad, selected students may have the opportunity to do an approved internship which would provide international work experience.

Eligibility requirements

This prestigious double-degree program will be offered to high-achieving students.

Professional experience

Students will have the opportunity to study or work overseas in an area relevant to their studies and interests.

Career options

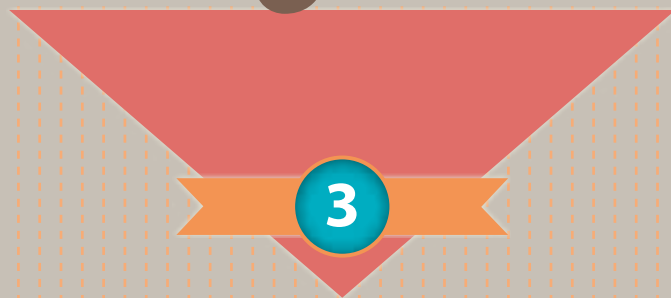
Graduates in the dual degree can pursue careers in the public sector, both local and international, government services, including diplomatic service, the United Nations system and other international organisations, social entrepreneurship and companies with a global outreach, international relations, journalism, including travel journalism, travel and tourism.

Course structure

Students are required to complete a total of 32 units (320cp) in the dual degree. Students complete four core units (40cp in total), an International study/exchange or internship (40cp) and four approved electives (40cp) as part of the Global Studies program.



OUR
ACU
your future



HOW MUCH DOES UNI COST?

COMMONWEALTH LOANS

Most students will have access to deferred payment arrangement through the Higher Education Loan Program (HELP). The HELP scheme for university students consists of three loans. The right loan for you will depend on your circumstances, eligibility and where you want to study.

HELP loan	Description
HECS-HELP	A loan program to help eligible Commonwealth-supported students to pay their student contribution amounts.
FEE-HELP	A loan program to help eligible fee-paying students to pay their tuition fees.
OS-HELP	A loan program to help eligible undergraduate Commonwealth-supported students to pay their overseas study expenses.

COMMONWEALTH CONTRIBUTIONS

The amount the Australian Government contributes depends on the funding cluster in which the unit of study is classified and on the weight of the unit in your course of study (the equivalent full-time student load [EFTSL] value of the unit). This amount is paid directly to your higher education provider. Even though the Australia Government subsidises Commonwealth-supported places, students still have to make a payment towards their education, and this is known as the 'student contribution' amount.

2012 STUDENT CONTRIBUTION BANDS AND RANGES

Student contribution band	2012 student contribution range (per EFTSL)
Band 3: Law, dentistry, medicine, veterinary science, accounting, administration, economics, commerce	\$0 - \$9,425
Band 2: Computing, built environment, other health, allied health, engineering, surveying, agriculture	\$0 - \$8,050
Band 1: Humanities, behavioural science, social studies, education, clinical psychology, foreign languages, visual and performing arts, education, nursing	\$0 - \$5,648
National priorities: Mathematics, statistics and science	\$0 - \$4,520

For more information: www.goingtouni.gov.au

OUR MISSION:

to create a better world!



... by enhancing health practices

Professor Sandy Middleton, National Centre for Clinical Outcomes Research (NaCCOR):

Recovery after a stroke can be significantly improved when health professionals are supported to implement protocols that ensure consistent and prompt clinical management of three factors – fever, blood sugar levels and swallowing. Patients admitted with an acute stroke to hospitals that implemented these protocols were found to be 16 per cent more likely to be alive and independent after 90 days. These results are better than any current drug or treatment for stroke.

... by caring for our environment

Dr Pre De Silva, School of Arts and Sciences:

In Australia, CO² emissions per year due to the [Portland] cement manufacturing process is more than eight million tonnes. This research has the ultimate goal of finding an alternative binder system. It has the potential to cut down CO² emission as well as aid in recycling industrial wastes, bringing both environmental and economic benefits to the international community.

... by looking after future generations

Professor Sue Kildea, School of Midwifery:

Caesarean section can cause increased risk of infection, increased recovery time and other serious complications. There are indications the sterile water injections used to ease back pain during labour may also decrease the rate of caesarean sections. This study is investigating whether sterile water injections can decrease caesarean section rates and improve outcomes for women and their babies.

... by giving children the best possible education

Suzan Hirsch, Faculty of Education:

Research data indicated that many boys are not only underperforming in literacy, but are also disengaged with reading. A reading mentoring program called Rugby League Reads was introduced to schools, with the aim of shifting the negative attitudes about reading by using the students' self-identified heroes.

... by creating better outcomes for individuals

Dr David Greene, School of Exercise Science:

Jockeys place themselves at risk of compromised musculoskeletal health on a daily basis. This project allows us to understand more about an apprentice jockey's musculoskeletal health, growth, maturation, physical activity, injury status, and calcium and energy intake, and this helps us profile the physiological status of apprentice jockeys.



Research

... by researching the past to find answers for the future

Dr Robert Paddle, School of Psychology:

The last known Tasmanian tiger, or thylacine, died on 7 September 1936 in Hobart Zoo. While its demise can be attributed to hunting and habitat destruction by European settlers, it has long been suspected that disease may also have contributed. In examining this theory, my findings may also help reduce the rapid decline of the Tasmania Devil, which is currently being decimated by devil facial tumour disease – a devastating disease which is sweeping through the population.

... by building new futures for the less fortunate

Associate Professor Peter Howard, Institute for Advancing Community Engagement:

Clemente provides accredited university courses for people struggling with homelessness, mental illness and long-term unemployment. Its effectiveness was revealed recently in a new study which showed significant improvements in health, housing, financial and social outlooks among participants. This university program is transformational in nature in that it brings about new learning opportunities and new futures for people.

... by enhancing health practices

Dr Noah Riseman, School of Arts and Sciences:

Indigenous people have served in the Australian armed forces in all conflicts and peacetimes since the Boer War. By studying both archival documents and oral history interviews of Australian Indigenous service personnel and veterans from 1946 to 2003, I am working to create a picture of the involvement and experiences of Indigenous service personnel. I aim to learn about the wider impact of military service on Aboriginal and Torres Strait Islander ex-service personnel, their families and their communities, as well as the impact of their service on the attitudes of their non-Indigenous compatriots.

... by examining the link between religion and the environment

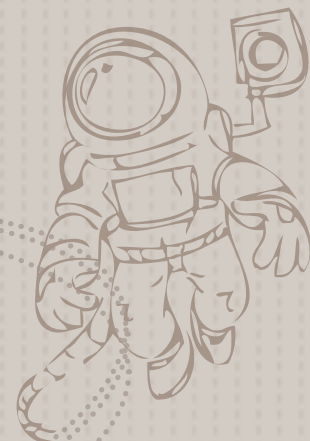
Associate Professor Mary Coloe, School of Theology:

Genesis 1 and its connotations that humans are central to the universe has helped shape Western attitudes towards nature, and some have used these texts to justify policies that exploit natural resources with no regard to environmental and social consequences. We are re-examining key biblical texts in order change religious attitudes towards the environment. Science and religion need to work together to actively promote greater environmental responsibility.

... by looking to space for medical breakthroughs

Professor Julie Hides, School of Physiotherapy:

Lower back pain is common in both astronauts and bed rest subjects. We can learn a lot from space research and apply it here on Earth. I worked with European Space Agency physiotherapist Gunda Lambrecht to develop a program that taught the bed rest subjects to contract the specific back muscles that atrophy without gravity – and build up endurance. This is part of the program now used by Gunda to rehabilitate the astronauts when they return to Earth.





**EARLY ACHIEVERS'
PROGRAM**

EAP applicants will need to have completed the relevant prerequisite subjects for their course and achieve the University's basic entry requirements.

One of the biggest benefits of the program is that successful applicants receive an offer well ahead of the usual tertiary admissions announcements.

you are worth more than your score

If you are currently enrolled in Year 12, you are eligible to apply if you:

- have completed three semesters of study in Year 11 and 12 with a consistently good result, and are completing Year 12 studies
- can demonstrate involvement in your community, such as contribution to your school, church, local community, sporting or cultural organisation
- select ACU as one of your preferences when applying through your tertiary admissions centre
- have undertaken the relevant prerequisite subjects for your chosen degree.

you are worth more than your resumé

If you are not currently enrolled in Year 12, you are eligible to apply if you:

- can demonstrate your capacity for tertiary study, based on prior formal or informal learning
- can demonstrate involvement in your community, such as contribution to your church, local community, sporting or cultural organisation
- select ACU as one of your preferences when applying through your tertiary admissions centre
- have undertaken studies or prior learning which enables you to satisfy specific entry requirements for your chosen degree.

application process

- Apply for admission for an ACU course through your tertiary admissions centre (QTAC, VTAC or UAC) by the closing date
- Complete the ACU online EAP application form between 13 August and 21 October 2012
- See www.acu.edu.au/eap to find out more.

The Elite Athletes' Program caters for students who are pursuing athletic goals alongside their academic studies.

ACU may give special consideration to university applicants who have been competing in sport at a high level, and whose level of training has impacted upon their studies. The program is designed to assist those who have the potential to successfully combine

sporting ambitions with the pursuit of academic qualifications.

ACU is recognised as an Elite Athlete Friendly University. Athletes who have been identified as such by the Australian Institute of Sport, a state institute (or academy) of sport or a relevant national association, may apply for the Elite Athletes' Program.

The University understands that elite athletes must satisfy both their training and competition commitments and academic course requirements, and will help members of the program with flexible study options in order to meet these competing needs.

Australian Catholic University has a bonus entry scheme to ensure all students have equitable access to higher education.

accessACU is open to current Year 12 students, and awards eligible applicants bonus points for entry to ACU based on three main areas:

Subject bonus – for applicants who achieve high marks in Year 12 subjects that are relevant to ACU courses

Geographic region – for applicants who live in areas that are local or have particular relevance to the campus at which they wish to study

Special access – for applicants who have experienced social or educational disadvantage due to circumstances beyond their control.

Students who meet the criteria may be awarded five bonus points under each scheme, with a maximum of 10 points per applicant.

Visit www.acu.edu.au/scholarships

Scholarships at ACU



ACU offers a wide range of scholarships and bursaries to commencing and continuing undergraduate and postgraduate students across all fields of study. Often recognising outstanding academic achievement, ACU's scholarships and bursaries also acknowledge the University's responsibility to provide access to students who might otherwise be excluded or disadvantaged.

Take a look at our website to see what's on offer. As long as you meet the eligibility criteria, you can apply for as many scholarships as you like.



Rachael Wynn

Peter W. Sheehan Award Recipient
Bachelor of Psychological Science

"This award will provide some financial assistance, allowing me to focus on my honours studies. I encourage anyone to take advantage of any scholarship opportunity. You have nothing to lose by applying!"

Applying for an ACU scholarship or bursary is easy

1. Visit www.acu.edu.au/scholarships
2. Use the Scholarships and Bursaries Browser to see what's on offer
3. Check the eligibility criteria of the scholarships to ensure you can apply
4. Have a look through the helpful hints before you apply
5. Apply for the scholarship using the online form. Don't forget to supply all your supporting documentation
6. Remember: as long as you meet the eligibility criteria, you can apply for as many scholarships as you like.

Want to maximise your chance of success?

- Ensure you meet all eligibility criteria
- Apply for more than one scholarship
- Check you have all the right documents
- Double and triple check the details you have provided
- Check your student email regularly (all communication will be sent here)

FREE

University Experience

University Experience is a free program that gives you the opportunity to sample the degree of your choice. Get a taste of life at ACU by meeting academic staff and current students, and trying out the course you are interested in studying.

Ballarat Campus

Primary Education	Wednesday 4 July
Early Childhood	Wednesday 4 July
Nursing	Wednesday 4 July
Nursing/Paramedicine	Wednesday 4 July

Canberra Campus

Primary Education	Tuesday 10 July
Early Childhood	Tuesday 10 July
Nursing/Paramedicine	Tuesday 10 July
Social Work	Tuesday 10 July
Theology	Tuesday 10 July

Brisbane Campus

Business	Wednesday 23 May
	Friday 5 October
Health Sciences	Thursday 5 July

Melbourne Campus

Creative Arts Industry Day	Friday 15 June
Health Sciences Day	Friday 6 July

North Sydney Campus

Nursing	Tuesday 10 July
Environmental Science	Tuesday 10 July

Strathfield Campus

Exercise Science	Friday 13 July
------------------	----------------

HSC ENRICHMENT DAY

These free enrichment days give Year 12 students the opportunity to spend a day at ACU and gain useful information about HSC subjects. University academics, who set and mark HSC exams, will present lectures on key components of the HSC syllabus, including ancient history, literature and economics.

Strathfield HSC Enrichment Day
Economics and Literature – Wednesday 11 July
Ancient History – Thursday 12 July



COURSE LIST

ARTS	PAGE
Bachelor of Arts	20
Bachelor of Arts (Honours)	20
Bachelor of Arts (Business and Communication Studies)	22
Bachelor of Arts (Psychology)	22
Bachelor of Arts and Economics	23
Bachelor of Media Communication	24
DUAL DEGREES	24
PATHWAY	
Certificate in Liberal Studies	23

BUSINESS	PAGE
Bachelor of Business Administration	36
Bachelor of Business Information Systems	37
Bachelor of Business Information Systems (Honours)	37
Bachelor of Commerce	38
Bachelor of Commerce (Honours)	38
Bachelor of Human Resource Management	39
Bachelor of Human Resource Management (Honours)	39
Bachelor of Information Technology	40
Bachelor of Marketing	40
Bachelor of Marketing (Honours)	40
DUAL DEGREES	41
PATHWAYS	
Associate Degree in Business Administration (Indigenous Studies)	36
Certificate in Business Information Systems	37
Certificate in Commerce	38

EDUCATION	PAGE
Bachelor of Education (Early Childhood and Primary)	46
Bachelor of Education (Primary)	49
Bachelor of Education (Primary) (Indigenous Studies)	53
Bachelor of Inclusive Education and Disability Studies	48
Bachelor of Teaching (Early Childhood)	46
DUAL DEGREES	50
PATHWAYS	
Advanced Certificate in Educational Studies	53
Associate Degree in Early Childhood Education	46
Associate Degree in Inclusive Education and Disability Studies	48
Associate Degree in Indigenous Education	53
Certificate in Educational Studies	53

ENVIRONMENTAL SCIENCE	PAGE
Bachelor of Environmental Science	25
Bachelor of Environmental Science (Honours)	25

HEALTH SCIENCES	PAGE
Bachelor of Applied Public Health	61
Bachelor of Exercise and Health Science	56
Bachelor of Exercise and Health Science (Honours)	56
Bachelor of Exercise and Sports Science	57
Bachelor of Exercise and Sports Science (Honours)	57
Bachelor of Midwifery	57
Bachelor of Midwifery (Honours)	57
Bachelor of Nursing	62
Bachelor of Nursing (Honours)	62
Bachelor of Nursing (Mental Health)	63
Bachelor of Nursing (Practice Leadership)	62
Bachelor of Occupational Therapy	58
Bachelor of Paramedicine	58
Bachelor of Physiotherapy	60
Bachelor of Speech Pathology	59
DUAL DEGREES	63

INTERNATIONAL DEVELOPMENT STUDIES AND GLOBAL STUDIES	PAGE
Bachelor of International Development Studies	29
DUAL DEGREES	29

LAW	PAGE
Bachelor of Law	66
DUAL DEGREES	66

PSYCHOLOGY AND SOCIAL SCIENCES	PAGE
Bachelor of Counselling	30
Bachelor of Psychological Science	31
Bachelor of Social Science	31
Bachelor of Social Science (Honours)	31
Bachelor of Social Science (Psychology)	32
Bachelor of Social Work	32
Bachelor of Social Work (Honours)	32
Bachelor of Youth Work	33
DUAL DEGREES	33

THEOLOGY AND PHILOSOPHY	PAGE
Bachelor of Theology	70
Bachelor of Theology (Honours)	70
DUAL DEGREES	71
PATHWAYS	
Certificate in Theology	70
Diploma in Theology	70

VISUAL ARTS AND DESIGN AND CREATIVE ARTS	PAGE
Bachelor of Creative Arts	26
Bachelor of Visual Arts and Design	26
Bachelor of Visual Arts and Design (Honours)	26

course cut-offs 2012

COURSE	BRISBANE OP/RANK	NORTH SYDNEY ATAR	STRATHFIELD ATAR	CANBERRA ATAR	BALLARAT ATAR	MELBOURNE ATAR
Bachelor of Applied Public Health	n/a	n/a				n/a
Bachelor of Arts	18/63		58.90			58.90
Bachelor of Arts (Business and Communication Studies)			60.35			
Bachelor of Arts (Psychology)	17/65		60.70			61.45
Bachelor of Arts/Bachelor of Commerce	14/71	58.90				59.25
Bachelor of Arts and Economics			58.80			
Bachelor of Arts/Bachelor of Global Studies			75.35			n/a
Bachelor of Arts/Bachelor of Social Work	18/63		59.20			
Bachelor of Business Administration	18/63	61.45				59.85
Bachelor of Business Administration/Bachelor of Global Studies		75.00				n/a
Bachelor of Business Information Systems		63.20				
Bachelor of Commerce	18/63	59.00				58.85
Bachelor of Commerce/Bachelor of Business Information Systems		61.15				
Bachelor of Commerce/Bachelor of Global Studies		75.45				n/a
Bachelor of Counselling	18/63					59.25
Bachelor of Creative Arts	18/63					59.40
Bachelor of Education (Early Childhood and Primary)	18/63		65.10	62.85	59.30	62.25
Bachelor of Education (Primary)	18/63		74.05	59.45	58.85	66.35
Bachelor of Education (Primary) (Indigenous Studies)	RC		RC			
Bachelor of Environmental Science		63.70				
Bachelor of Exercise and Health Science	18/63		63.05			59.45
Bachelor of Exercise and Sports Science	18/63		61.10			72.25
Bachelor of Human Resource Management	18/63	59.15				60.10
Bachelor of Inclusive Education and Disability Studies			61.60			
Bachelor of Information Technology		n/a				
Bachelor of International Development Studies			63.95			59.75
Bachelor of Laws		NEW!+				NEW!
Bachelor of Laws/Bachelor of Arts		NEW!+	NEW!+			NEW!
Bachelor of Laws/Bachelor of Business Administration		NEW!+				NEW!
Bachelor of Laws/Bachelor of Commerce		NEW!+				NEW!
Bachelor of Laws/Bachelor of Global Studies		NEW!+	NEW!+			NEW!
Bachelor of Laws/Bachelor of Theology		NEW!+	NEW!+			NEW!
Bachelor of Marketing	18/63	59.00				61.20
Bachelor of Media Communication						59.05
Bachelor of Midwifery	14/71					74.55
Bachelor of Nursing	18/63	59.00		60.05	58.90	71.60
Bachelor of Nursing (Practice Leadership)	8/86	85.00		85.00	n/a	85.90
Bachelor of Nursing (Mental Health)	18/63	67.00		64.85	n/a	66.90
Bachelor of Nursing/Bachelor of Business Administration	n/a	n/a				n/a
Bachelor of Nursing/Bachelor of Paramedicine	15/69			70.75	71.50	
Bachelor of Occupational Therapy		NEW!				60.00
Bachelor of Paramedicine						81.35
Bachelor of Physiotherapy	4*/94*	95.05				
Bachelor of Psychological Science	17/65		NEW!			58.85
Bachelor of Social Science	18/63					62.10
Bachelor of Social Science (Psychology)	17/65					59.12
Bachelor of Social Work	n/a		n/a	n/a		
Bachelor of Speech Pathology	NEW!	NEW!				NEW!
Bachelor of Teaching (Early Childhood)			59.25	58.80		
Bachelor of Teaching/Bachelor of Arts (Humanities)	18/63		60.55			58.85
Bachelor of Teaching/Bachelor of Arts (Indigenous Studies)			RC			
Bachelor of Teaching/Bachelor of Arts (Mathematics)			67.25			75.45
Bachelor of Teaching/Bachelor of Arts (Technology)			60.20			
Bachelor of Teaching/Bachelor of Arts (Visual Arts)			60.00			
Bachelor of Theology	8/86		66.55	58.80		n/a
Bachelor of Theology/Bachelor of Global Studies			75.00			n/a
Bachelor of Theology/Bachelor of Social Work	17/65		61.70	58.80		
Bachelor of Visual Arts and Design			58.85			59.40
Bachelor of Youth Work						RC

RC = Range of criteria used for selection purposes n/a = less than 10 offers were made in this round or the course cut-off was not available
 *Not everyone on this OP band or rank was made an offer +Sydney Campuses in 2014 subject to approval

OPEN DAY/NIGHT 2012

Your future starts here

Ballarat Campus

Sunday 26 August 10am – 3pm

Melbourne Campus

Sunday 12 August 10am – 4pm

Brisbane Campus

Wednesday 25 July 5.30pm – 8.30pm

North Sydney Campus

Saturday 1 September 9am – 4pm

Canberra Campus

Saturday 25 August 9am – 4pm

Strathfield Campus

Saturday 8 September 9am – 4pm



REGISTER ONLINE

Send us your details and we will keep you in the loop about courses, events, information sessions, and more! Visit www.acu.edu.au/register

Got a question?

1300 ASK ACU
futurestudents@acu.edu.au