



2012

**Postgraduate
Prospectus 2012**

Royal Holloway
University of London



For general enquiries about Royal Holloway,
please contact our recruitment teams.

UK students should contact:

Admissions and UK Recruitment

T: +44 (0)1784 443399

F: +44 (0)1784 276381

liaison-office@rhul.ac.uk

International students should contact:

Royal Holloway International

royalhollowayinternational@rhul.ac.uk

For detailed enquiries about
postgraduate study please contact
the Director of Graduate Studies named
on the relevant departmental page.

Information is also available on our website:

www.rhul.ac.uk

Royal Holloway
University of London
Egham, Surrey TW20 0EX
United Kingdom
T: +44 (0)1784 434455
F: +44 (0)1784 437520



Why choose Royal Holloway

One of the largest multi-faculty colleges in the University of London, Royal Holloway has a distinguished history and reputation for academic innovation.



-
- Ranked in the top research-intensive universities in the UK
 - A University of London degree; a qualification recognised the world over leading to first-rate career opportunities
 - An interdisciplinary approach to research in the arts, humanities, sciences and social sciences
 - A research-led environment in which academic staff are working at the frontiers of their subjects
 - Original research of national and international importance fuelled by a global network of collaboration
 - Successful partnerships with, and sponsorship from, governments, industry and commerce
 - A vibrant community of students from over 130 countries
 - A beautiful campus set in 135 acres plus central London study facilities
 - A friendly and supportive environment with high quality student accommodation
 - A broad portfolio of bursaries and scholarships



Contents

Why choose Royal Holloway	1	Earth Sciences	48	Applying to Royal Holloway	
Welcome	5	Economics	50	Funding your studies	90
Research and teaching excellence	6	English	52	Sources of funding	92
Research intensive	8	Geography	54	Admissions process	94
Postgraduate study	10	History	56	International applications	96
Campus life	12	Hellenic Institute Research Centre	58	Terms and conditions of admission	97
London	14	Holocaust Research Centre	59	Where to find us	98
Local area	15	Humanities & Arts Research Centre (HARC)	60	Campus plan (inside back cover)	
Accommodation	16	Information Security Group	61		
Financial information	18	Management	62		
An international community	20	Management research centres	64		
Student support	22	The Royal Holloway MBA	65		
Investing in your future	24	Mathematics	66		
Alumni Relations and Development	25	Media Arts	68		
Studying at Royal Holloway		Modern Languages, Literatures & Cultures	70		
Information services	28	French	72		
Royal Holloway International	30	German	73		
Student exchange	32	Hispanic Studies	74		
Distance learning	34	Italian	75		
Departments & Centres		Music	76		
Course finder	36	Physics	78		
Biological Sciences	38	Politics & International Relations	80		
Classics & Philosophy	40	Psychology	82		
Computer Science	42	Social Work	86		
Centre for Criminology & Sociology	44				
Drama & Theatre	46				

This Prospectus was edited and produced by the External Relations Office, Royal Holloway. It was published in September 2011 and the information given was correct at that time. It is intended primarily for those considering admission to the College as postgraduate students in 2012. We reserve the right to modify any statement if necessary, to make variations to the contents or methods of delivery of programmes of study, to discontinue programmes or to merge or combine programmes if such action is reasonably considered to be necessary by the College; every effort will be made not to do so, as much notice as possible will be given of any changes, and the College will use all reasonable endeavours to provide a suitable alternative. Information about specific entrance requirements is intended as a guide only – offers of places will vary from year to year and applicant to applicant.

The text of this Prospectus can be made available in alternative formats upon request to the Educational Support Office.



Welcome to Royal Holloway





Royal Holloway is widely recognised on the world stage as one of the UK's leading teaching and research university institutions. One of the larger colleges of the University of London, we are strong across the sciences, social sciences, arts and humanities. Our 8,500 students work with internationally renowned scholars in 18 academic departments.

The University of London degree gained by our talented, high-achieving graduates, is valued the world over.

As a cosmopolitan community, with students from 130 countries, we focus on the support and development of the individual. Our friendly campus, just 19 miles west of central London, provides a unique environment for university study. Campus life revolves around the Students' Union, which runs over 100 societies and sports clubs, and we are recognised as London's best sporting college.

Research and teaching excellence

Royal Holloway is a research leader. The College is acknowledged worldwide for high quality research across all sectors of the arts, humanities and sciences. This is built on a long track-record of pioneering research, continued investment in top-class staff and facilities, and innovative partnerships in Higher Education, Government, industry and other organisations in the UK and abroad.

We continue to compete successfully for first-class academics with new perspectives and expertise. Their cutting-edge research makes our courses compelling and enables us to make a greater impact on society.

Research Assessment Exercise

Royal Holloway's position as one of the UK's leading research-intensive institutions was confirmed by the results of the most recent Research Assessment Exercise (RAE 2008) conducted by the Higher Education Funding Council (HEFCE).

The scoring system for the RAE 2008 measures research quality in four categories, with the top score of 4* indicating quality that is world-leading and of the highest standards in terms of originality, significance and rigour.

The College is ranked 16th in the UK for research of 4* standard and 18th for 3* and 4* research.

Royal Holloway's successes include:

- 60 percent of research profile is rated as world-leading or internationally excellent, outperforming the national average of 50 percent
- The Department of Music is the top department in the UK, further recognition of its world-leading research excellence
- A further eight departments are in the top 10 ranked by proportion of 3* and 4* research: Biological Sciences (joint 3rd), Drama (joint 9th), Earth Sciences (joint 7th), Economics (joint 9th), Geography (joint 9th), German (joint 5th), Media Arts (joint 6th) and Psychology (joint 5th)

Our results are testament both to the hard work and dedication of our staff and the investment that the College has made in recent years.

Research community

Our students join a community in which academic staff are working at the frontiers of their subjects.

Our postgraduate programmes reflect the latest thinking and as such offer exciting intellectual challenges. In an increasingly knowledge-based society, those who are at the frontier will be ideally positioned to deal with the challenges of a rapidly changing and challenging world.

Research & Enterprise

Royal Holloway's research expertise has strong links with London and the South East regional business community. We also have partnerships with many national and multinational companies. For example, the world-leading Information Security Group has numerous high-profile industrial partners supporting its research and consultancy including Vodafone, Hewlett-Packard and IBM. Research income at Royal Holloway has increased in recent years through the development of thriving partnerships with business and industry. The College is a founding partner of the Surrey Enterprise Hub, offering a wide range of business support services to local businesses. The Hub also includes an incubation centre offering office accommodation to SMEs, onsite business support and hugely valuable mentoring services. Several business units contain projects run by Royal Holloway graduates.

The Research and Enterprise Office encourages, supports and promotes research and enterprise activities at Royal Holloway. A dedicated team of experienced staff provide information and advice to the academic community on research funding, intellectual property rights and subsequent exploitation. The office assists with the formulation of marketing strategies, negotiation and administration of contracts, and the sourcing of commercial opportunities. The Enterprise team offers students, staff and alumni advice and support to help them identify and start new business ventures, with access to a variety of funds which can provide grants and investments ranging from Proof of Concept to private equity finance.

The office has been instrumental in forging successful relationships and collaboration with industry and commerce, strengthening the College's research and enterprise activities, which include contract research and consultancy, Continuing Professional Development and specialist training courses for external organisations.

For more information please visit:
www.rhul.ac.uk/research/

“One of the finest research records
of any UK university.”

The Sunday Times

Teaching quality

Teaching at all levels is undertaken by staff with a real command of their subject. You will be working with an expert in the field – sometimes the leading expert – and share in his or her knowledge of, and enthusiasm for, the subject.

The Quality Assurance Agency (QAA) evaluates all higher education institutions through a process of institutional audit, including reviews of subject areas. The development engagements undertaken at discipline level express confidence in standards and quality of learning opportunities. Royal Holloway’s departments have been awarded excellent ratings, and the College’s internal mechanisms for teaching quality and maintaining standards were strongly commended by the QAA in the latest institutional audit.

High student satisfaction

Royal Holloway students have given us a big vote of confidence in each successive National Student Survey, conducted independently with final year students. National rankings have placed the College in the top tier of universities for students’ overall satisfaction with the quality of their academic experience. The survey aims to help prospective students make informed choices about where to apply to study by comparing results on the official Unistats website.

The University of London

Degrees from the University of London have a reputation for excellence across the world. The University of London is a federal organisation of institutions of varying size and profile, together forming the largest and most diverse university in Britain and one of the largest in Europe. However, this reputation and diversity is not at the cost of the anonymity which often characterises large universities. The colleges are individual entities in their own right, each with its own distinctive community and character.

Membership of the University of London has important advantages for postgraduate students. Our students routinely make use of the University of London Library at Senate House and access to the libraries in other colleges is often possible. Some Masters degrees operate on a federal basis, with courses available in several colleges. Research collaboration between colleges and shared research seminars are very common, bringing added diversity and expertise to our programmes.



Research intensive

Researchers from the world-renowned Information Security Group (ISG) at Royal Holloway are participating in 'Visualisation and Other Means of Expression' or VOME, an exciting £2 million collaborative project on information privacy and consent in online interactions. This aspect of information security research is becoming increasingly essential as privacy and identity issues impinge on the everyday lives of the public.



Can we blame poor leadership within the NHS for its financial crisis, and its effects on patient care? Issues of management within healthcare delivery organisations are being explored with funding of over £1 million for three three-year research projects from the NHS Service Delivery and Organisation Programme. It will offer the NHS insight into how its service delivery organisations can improve their management and leadership skills to help deliver services to patients more effectively.



Funding from the Victoria and Albert Museum (V&A), the Arts and Humanities Research Council and the Getty Foundation lies behind a five year research project undertaken by the Centre for the Domestic Interior, which was set up as a partnership between the V&A, the Royal College of Art, and the Bedford Centre, Royal Holloway. The work is a high level synthesis of the threefold traditions of the archival historians, the research museums, and the contextual study of art and design.



Royal Holloway's Creative Writing MA launched under the leadership of the former Poet Laureate, Sir Andrew Motion, focuses on experimental poetry and new technologies of writing. A multi-talented teaching team and proximity to the London publishing world make it a popular choice for aspiring writers. The MA is taught in central London and has led to a number of successful published works.



Research experts in Economics at Royal Holloway and Oxford have featured prominently in international media following criticisms of a study in *The Lancet* that estimated casualty figures from the war in Iraq. They revealed that there was a bias in the methodology applied by the study which led to an over-estimation of the death toll in Iraq.

Royal Holloway is an innovative and forward-looking university acknowledged worldwide for high-quality research.

The Department of Earth Sciences has recently invested in an impressive new 3D visualisation facility and IT laboratories. The state-of-the-art laboratories and computing facilities enhance Petroleum Geoscience teaching and research at Royal Holloway, with the visualisation suite enabling students to view satellite imagery and seismic data in 3D.



The Centre for Nanotechnology and Nanophysics supports a diverse portfolio of research activities and international collaborations and has achieved an enviable international research reputation. The group remains at the cutting-edge, focusing resources on the development of quantum computing devices and TeraHertz imaging as well as investigations into fundamental physics.



Royal Holloway is at the forefront of groundbreaking research in authenticating food. Improving detection of genetically modified organisms (GMOs) in response to increasing demands to trace and label GMOs, such as soya and tomatoes, has led to the development of sophisticated methods to detect the presence of GMOs in food and feeds. New robust monitoring methods such as these will ensure a trustworthy and safe approach to GMO usage.



The music of Indonesia and the ancient form of Javanese shadow puppetry is brought to life through the research and performance in ancient art forms. The Department of Drama & Theatre, in association with the Music Department, is gaining a reputation for teaching and research in the area of South-East Asian drama and music. Royal Holloway is the only institution in the UK to be home to a Japanese Noh Theatre.

Postgraduate study

Royal Holloway offers two main categories of postgraduate programmes: taught and research. Both types of programmes provide the opportunity for advanced in-depth knowledge and skills, and improved employment opportunities.

Taught programmes

Masters degrees fulfil a number of different roles. Many are closely linked to research specialisms – from Petroleum Geoscience (Basin Evolution) in Earth Sciences to Shakespeare in English – or offer a broader preparation for research in a particular discipline, for example the MMus in Advanced Musical Studies or the MSc in Physics Research. Topics cannot always be confined within departmental boundaries, and Masters degrees are an ideal opportunity for interdisciplinary work. Other Masters degrees integrate university work with professional, commercial or industrial applications, as in the MSc degree in Information Security or the MBA in International Management.

Postgraduate Diplomas are often designed as conversion courses for graduates of related disciplines or for those with non-standard qualifications. Successful completion of the diploma can lead to study for a Masters or a research degree, but they are also a qualification in their own right.

Teaching and assessment

Teaching methods for postgraduate taught degrees and diplomas are as varied as the programmes themselves. Significant emphasis is placed on private study and the preparation of assessed pieces of work, and in some degrees the teaching may be arranged so that full-time students are required to attend timetabled sessions on only two or three days per week. A few courses take place at the College's central London base rather than on the main campus.

Assessment is also varied: some degrees and diplomas have a mixture of coursework and unseen examination, while others rely solely on assessed coursework such as a portfolio of essays. A dissertation based on independent research is a feature of all Masters degrees. The College's *Code of Practice for the Academic Welfare of Students on Taught Courses* applies to postgraduate students on taught programmes and covers the basic requirements met by departments.

Duration of study

Most Masters degrees can be taken over one year full-time (FT) or two years part-time (PT), with some exceptions. Postgraduate Diplomas usually take nine months full-time or 21 months part-time. (For more information concerning the duration of degree courses, please refer to the list on page 36 or see the course information on the relevant department's page).

Research programmes

The following extract sums up the nature of research degrees at Royal Holloway and indeed at most UK universities:

"[A] PhD degree must form a distinct contribution to the knowledge of the subject and afford evidence of originality shown by the discovery of new facts and/or by the exercise of independent critical power...

[An] MPhil degree shall be either a record of original work or an ordered and critical exposition of knowledge... There should be evidence that the field has been surveyed thoroughly."

(Extract from the University of London Regulations)





Research degrees leading to the qualification of Doctor of Philosophy (PhD) or Master of Philosophy (MPhil) have three elements that set them apart from doctoral degrees in many other parts of the world:

- Research is carried out at the frontiers of knowledge in a subject.
- The research is directed by a supervisor, but the final outcome depends entirely on the individual student. Although in the Sciences and Social Sciences research is often carried out within research groups, each student will nevertheless be working on a specific element of the group's research.
- The degree is awarded on the basis of a thesis and accompanying oral examination. Since the thesis will contain much original material, the examiners will be leading experts in the relevant field of study. The recommended length of the thesis varies, but is usually between 75,000 and 100,000 words.

There are significant differences in the nature of research in different subjects. While some students spend long periods in the field or in libraries and archives, others are in daily contact with their research group and supervisor in the laboratory.

Each research student can expect regular reviews of their progress, and a major annual review for which the student prepares a written submission; the purpose of the annual review is to monitor progress, set new objectives, and identify training requirements. While the most important relationship for a research student is with his or her supervisor, you will also have an adviser to provide more general support and to participate in reviews.

The College's *Code of Practice for the Academic Welfare of Postgraduate Research Students* facilitates appropriate procedures and practice in all departments.

Duration of study

MPhil degrees normally require a minimum of two years' full-time study, and MPhil leading to PhD and PhD degrees require a minimum of three years full-time study. PhD students are usually registered initially for an MPhil with transfer to PhD status if research has progressed successfully after one or two years. Part-time research degrees take longer to complete. All students, with advice from their supervisors, must take responsibility for deciding on the appropriate time to submit their thesis. The College and the Research Councils consider that a full-time research student should take three years to complete a satisfactory thesis (five or six years for a part-time student) and you are advised to begin your research with that intention. Transfer to writing-up status may be possible following the completion of research.



Campus life

Royal Holloway's campus is a lively and friendly place where you will find a strong sense of community. Surrounded by Surrey's beautiful countryside, it is home to an impressive range of modern academic and social facilities, close to a number of towns and villages and within easy reach of London and the UK's major communications network. The campus is the focal point of student life where most teaching and social activities take place, and with the exception of Kingswood Hall (a mile away), where all our residences are located.

The splendour of the Founder's Building greets you as you enter the grounds and it is widely recognised as one of the most spectacular university buildings in the world. Founder's is home to the famous Picture Gallery containing Thomas Holloway's fine collection of Victorian paintings and the beautiful chapel. It also provides a remarkable residence for 500 students; and has a dining hall and restaurant, part of the library and the College administration.

The magnificence of the Founder's Building is just one part of the campus. Elsewhere you will find academic buildings, halls of residence, the Students' Union and all the facilities and amenities you might expect from a top class university institution – shops, restaurants and bars, a bank, the sports centre and playing fields, conveniently located in an attractive parkland setting.

Royal Holloway's multi-million pound estate investment programme continues to enhance the campus, most recently with a state-of-the-art lecture theatre complex – the stunning Windsor Building – and further phases of award-winning student accommodation, plus refurbishment and extensions to a number of academic buildings and services.

Beyond the buildings there are acres of woodland and open spaces providing a natural habitat for many varieties of bird, animal and plant life – so our biologists have fieldwork opportunities right here in our own grounds.

Friendly and cosmopolitan

But it's the people who bring the campus to life and we are renowned for having a particularly friendly ambience. Our size means you cannot move far without seeing a familiar face and this creates a safe, relaxed environment. There is also a cosmopolitan atmosphere; you will meet people of many nationalities, hear many different languages and interact with a vibrant range of cultures during your time here.

At the same time, the campus has a real sense of energy; the rigorous intellectual life which lies at the heart of our academic departments is complemented by an active social scene centred on the Students' Union and its many clubs and societies. The Union is always a hive of activity. It runs bars and entertainments seven days a week throughout term-time and organises regular market days selling everything from fresh fruit and veg to clothes and books, as well as frequent poster and CD sales. The main Union building on campus includes a large function hall, three bars, a coffee bar and the Union's administrative offices. Elsewhere on campus, the Students' Union operates Medicine – a bar and games area designed by the creators of the Ministry of Sound – and The Stumble Inn – the campus pub.

Many students choose to supplement their income through working on a part-time basis and there are hundreds of opportunities available for students working in various roles across the campus, from Students' Union Ents staff, to library, Facilities Management and administration opportunities. Royal Holloway's Community Action volunteering offers students opportunities to get involved in a range of different activities, enhance transferable skills and employability, build a healthy long term community spirit, have fun meeting new people, and all while helping people by making a difference in the local community. There are over 100 volunteering opportunities that take place during the week, daytime and evenings, on weekends and in the holidays, depending on the needs of our community partner organisations.

The whole community benefits from the rich and varied cultural life of the College. Public lectures, plays, concerts, campus tours, open days and other outreach events are held throughout the year.

The next few pages tell you more about life at Royal Holloway, while the student views in the departmental pages provide a personal perspective. But don't take our word for it – come and visit and judge for yourself. We look forward to welcoming you.



Our 135 acre campus is one aspect of Royal Holloway that really sets us apart from other colleges of the University of London.

London

London is so easily accessible – a 40 minute journey takes you right into the heart of the capital.

Royal Holloway is unique. We are part of the University of London, but for many students one of our great attractions is our location away from central London itself. The ancient milepost outside the campus told stagecoaches that they were 19 miles from Hyde Park Corner, although the journey is much quicker today!

London is so easily accessible that going there can be a regular occurrence, for a whole range of activities – trips to the theatre, night-life, concerts, sport, intercollegiate courses, or visits to the shops, galleries and other famous attractions.

London has so much to offer – the street theatre of Covent Garden, the bohemian scene in Camden Town, the commercialism of Oxford Street, the theatres of the West End and the South Bank, the global marketplace of the City, the treasures of the Tate, the National Gallery or the British Museum, a sporting occasion at Wimbledon, Lord's or Twickenham (even closer to home). But it can be a relief to take advantage of all this and then to return home to an environment which is free of the problems sometimes associated with living in a metropolis.

London is important in other ways. As well as the academic facilities of the University of London, there are libraries and museums with collections of national importance. Even if you are not making direct use of these resources, you can be sure that the academic staff in your department will be taking full advantage of them.



Our location also puts you close to many of the country's major employers so that making contacts, attending careers events and keeping in touch with developments is very easy; both London and the M4 corridor have a high concentration of companies, ranging from the small-to-medium to multinationals.



Local area

We are within a few minutes of the M25, M3 and M4 and connected by fast rail links to the rest of the country.



Royal Holloway is located in a beautiful part of Surrey, a county famed for its historic market towns, parks and woodlands, and lively cultural and sporting scene.

The campus is situated between the village of Englefield Green and the town of Egham. Englefield Green (reportedly the site of the last duel to be fought in England) has small shops and a picturesque village green, complete with cricket pitch and traditional pub. Egham has the shops, supermarkets, restaurants and bars you would expect of any small town. During term time, a College bus service runs to and from Egham Station, just a 40 minute train ride from central London.

Further afield are Windsor and Staines. Windsor is famous for its royal castle, Great Park, upmarket shops and streets. Always buzzing with tourists, there is plenty to do and see. Down the majestic River Thames, Staines has a large shopping centre with all the highstreet names, a cinema complex, sports centre and swimming pool.

There are many other places of interest within easy reach. How about a day at the races at Ascot, rugby at Twickenham, a wild ride at Thorpe Park, or a visit to Hampton Court or Richmond further along the Thames?

Many students live locally. The greatest concentrations of local student accommodation tend to be in Egham, Englefield Green and Staines since these are the easiest places to reach on foot, bicycle or by public transport.

The area is dominated by the River Thames, the nearest stretch being at Runnymede, site of the signing of the Magna Carta. One entrance to Windsor Great Park is just a few minutes walk from campus – ideal for a peaceful walk around Virginia Water Lake or through the Deer Park to Windsor Castle.

Communications

Good communications are an important feature of our location. For road-users, we are within a few minutes of the M25, M3 and M4. We are connected by fast rail links to the rest of the country via the London stations or Reading (Egham is on the London Waterloo-Reading line); Eurostar services to mainland Europe also depart from London. We are just seven miles from London Heathrow Airport.



Accommodation

At Royal Holloway we understand that finding a suitable place to live is important to postgraduate students. We offer a variety of College accommodation, close to all the campus facilities. If you prefer to live off campus, our Student Housing Bureau can advise on private sector housing in the local area.

Living on campus

Full-time postgraduate students have the opportunity to spend their first year in College accommodation if they wish; some research students might also spend their second and final years in halls, providing an online accommodation application request is submitted prior to the deadline. New international students are given priority places until the middle of July (if they apply by the deadline) and may be eligible to remain in a hall of residence for the duration of their programme of study, providing they submit an online accommodation application request prior to the deadline. After the deadline, accommodation will be offered on a first-come, first-served basis. A precise deadline is given in the application information on our website.

Students⁵ registered for taught Masters degree courses are eligible to live in Highfield Court, Runnymede Hall, Penrose Court, the Victorian Houses, Gowar & Wedderburn. Postgraduate research students⁵ can live in Highfield Court but can also live in other halls if Highfield Court is full. No matter which residence you choose, our halls offer a safe and comfortable home throughout your stay. Please be aware that some of the halls are mixed with undergraduate students; these are usually subdivided by floor.

Each postgraduate hall is self-catered, although residents also have access to the campus dining facilities. Data cabling has been installed in all of the accommodation to provide you with internet access for your studies.

Adapted accommodation

Many of our halls include rooms that have been adapted to make them suitable for students with disabilities. Full-time carers can be housed in a room adjacent to the room assigned to the student he/she is supporting. Students requiring consideration for these adapted rooms, or other provisions, should contact the Educational Support Office for advice prior to submitting their application for accommodation.

Couple and family housing

A limited amount of accommodation is available for international postgraduates who are married and wish to remain with their families. The availability of this accommodation varies from year to year. Please contact the Student Housing Bureau for further information.

Living off campus

A number of postgraduates live near campus in private sector accommodation. The Student Housing Bureau has its own private sector website with online lists of available flats, houses and lodgings in areas such as Englefield Green, Egham, Staines, Virginia Water, Ashford and Windsor. Some private sector accommodation is limited to postgraduates only.

Some postgraduate students also choose to live further afield and take advantage of the College's good communication links to commute to campus. Individual arrangements for research and the organisation of specific Masters degrees will determine whether this is a possibility – for example, some Masters degrees are organised so that attendance is necessary on a limited number of days each week.

Postgraduate students whose research involves work in central London may prefer to live nearer the capital. There are a limited number of intercollegiate hall places in central London available to Royal Holloway students. These are offered on a first-come, first-served basis. Application forms for intercollegiate halls should be requested directly from the Royal Holloway Student Housing Bureau. The University of London Accommodation Office offers assistance to those looking for other types of accommodation in London. Further information can be found on the University of London website: www.lon.ac.uk

Student Housing Bureau

All offers of accommodation in halls are made through the Student Housing Bureau, where staff are dedicated to helping students find a suitable place to live. The office also provides advice and information on renting private sector accommodation.

For more information, please visit:

www.rhul.ac.uk/studentlife/accommodation/



<p>Gowar & Wedderburn (567 students⁴)</p> <p>Grouped in flats of eight to form communal flats, the en-suite study bedrooms in Gowar & Wedderburn are arranged around a central corridor with a large communal kitchen and dining space at one end.</p>	<p>Highfield Court (124 students)</p> <p>Highfield Court is home to postgraduate students only. Each flat comprises six or eight en-suite bedrooms with a shared kitchen/diner.</p>	<p>Penrose Court (200 students⁴)</p> <p>Penrose Court is located on the north side of the A30 and is linked to the main campus via a footbridge. There is a mix of houses and flats and the single bedrooms (usually four or six) are located around shared bathroom and kitchen/dining facilities.</p>	<p>Runnymede 1 & 2 (462 students⁴)</p> <p>Runnymede is located at the lower end of campus near the Hub. Each flat has six or eight single bedrooms with en-suite facilities and a shared kitchen/diner. There is also a common room which can be used by all Runnymede residents.</p>	<p>Victorian Houses (Beeches and Chestnuts 25 students)</p> <p>Comprising of single bedrooms with shared bathroom and kitchen/dining facilities, the Victorian Houses have a similar feel to private accommodation and are home to postgraduates only.</p>
--	--	---	---	---

Single	✓	✓	✓	✓	✓
En suite	✓	✓		✓	
Standard			✓		✓
Data cabling	✓	✓	✓	✓	✓
Self-catered	✓	✓	✓	✓	✓
Postgraduate ⁵	✓	✓	✓	✓	✓
Undergraduate	✓		✓	✓	
Tenancy/weeks	38/50	50	38	38/50	50
Total rates 2011–12 ^{1,2}	£5,209.90 for 38 weeks ³	£6,020.25	£5,259.43	£4,929.00 for 38 weeks ³	£3,898.33 to £5,866.69

- 1 The 2011–12 rates are put in as a guideline; these will be increased for 2012–13 to take account of cost increases. Adjustments may also be made to reflect the provision of additional services or facilities.
- 2 The rates include data cabling where specified. Health Centre and counselling fees are included in all rates.
- 3 £10 of this yearly fee is allocated to the Hall social fund, which is used for welcome events at the start of the year and various Hall socials throughout your time in hall.
- 4 The number of rooms, for the specified halls, indicates the total number of rooms available to postgraduate as well as undergraduate students.
- 5 Please note that the properties advertised for use by postgraduate students may be subject to change.

Financial information

Financing postgraduate study needs careful planning and we advise that you check the various sources of financial support available at an early stage in your application. Royal Holloway has established an enviable record for helping postgraduate students secure funding, made possible in no small measure by our status as a premier research-led university.

In addition to the range of Royal Holloway awards, a variety of funding is open to postgraduate students from different sources. Competition for these awards is intense, and there are often strict deadlines that apply. Our students have attracted strong support from external funding bodies, and our Directors of Graduate Studies in each department will offer guidance on how to make an application. Further information on the various funding bodies is given on page 92 and on our website: www.rhul.ac.uk/studyhere/

Royal Holloway and University of London awards

The College directly supports some 100 postgraduate students through a variety of scholarships, bursaries and assistantships. The following awards are available. Please refer to our website for a full list and eligibility criteria.

- Thomas Holloway Research Scholarships
- College Research Scholarships
- College Masters Scholarships
- Crossland Scholarship
- Reid Scholarship
- Departmental Assistantships
- The Royal Holloway International Excellence Scholarship
- Santander International Excellence Scholarship
- Royal Holloway Jointly Funded Chevening Scholarships (overseas Masters applicants only)
- Commonwealth Shared Scholarships Scheme (overseas Masters from eligible country and eligible programmes)
- Alumni Bursaries (former College students only)
- Geoffrey Kneebone Scholarship

These awards vary in the level of funding provided. Some cover both tuition fees and living expenses in full; others are partial awards that make a contribution towards a portion of the cost of study. In some cases a combination of funding is possible (e.g. Departmental Assistantships may be held with Research Scholarships).



Departmental Assistantships require research students to support teaching, research or administrative duties in the department for up to six hours per week.

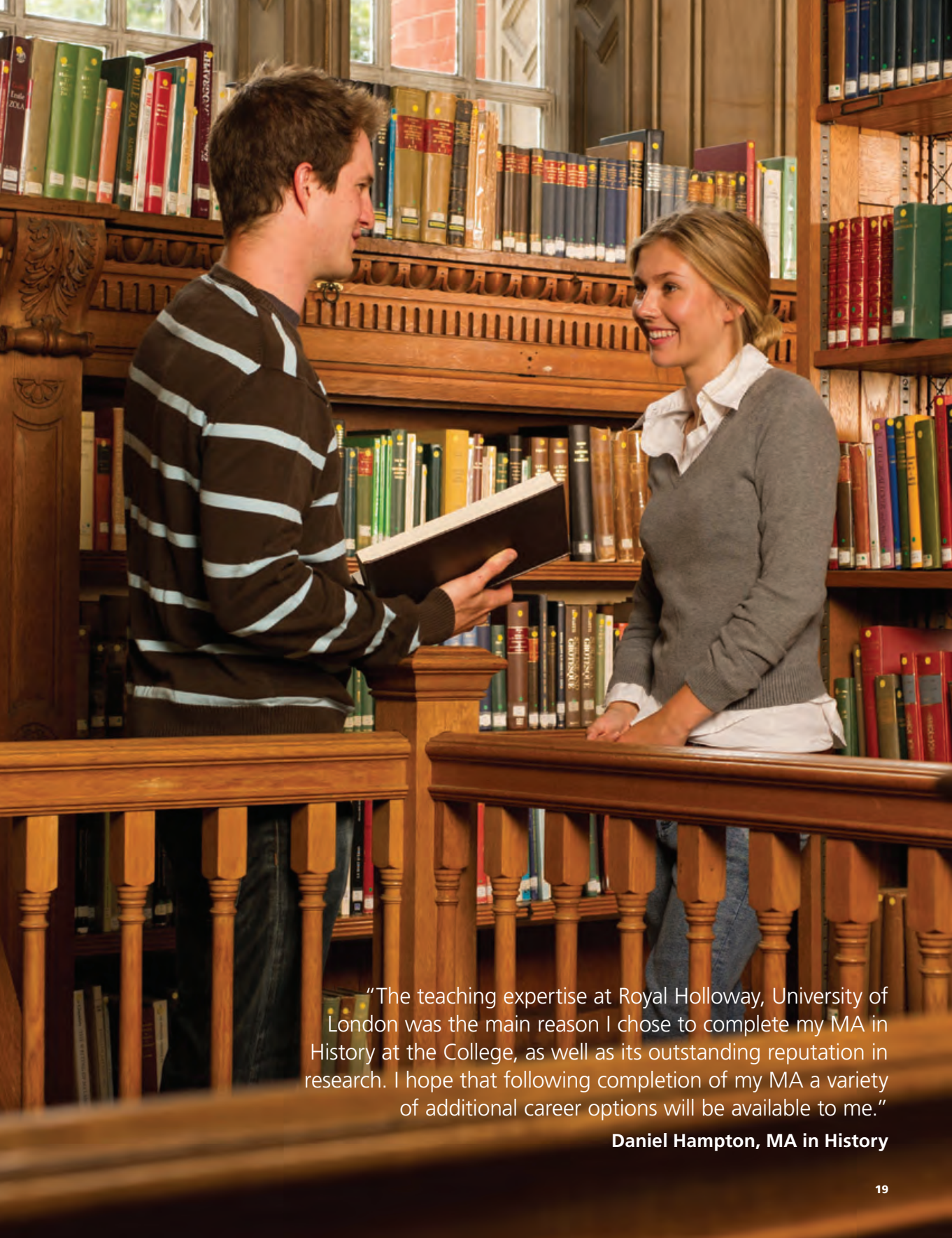
Employment opportunities

The College is aware that many students face varying degrees of financial pressures which may make it necessary for them to undertake part-time work while studying full-time.

Some students supplement their income through working in the vacations or, on a part-time basis, in term-time. The Royal Holloway Careers Centre provides details about employment through an electronic job shop. The Careers team has good links with employers and a dedicated resource centre offering a wide range of advice about seeking and applying for employment; for more information see page 24 or visit: www.rhul.ac.uk/careers/

In addition, there are many opportunities for part-time and vacation work on campus. The Students' Union employs students to work in bars and catering outlets, or as security staff, function technicians, DJs, drivers, etc. Students are also employed in areas such as the Library, student residences, catering services and the central administration.

Please be aware that according to College Regulations, full-time students can work no more than 20 hours per week during term-time. International students are able to work for up to 20 hours per week during term-time and full-time in the vacations. Further information is available from the International Student Support Office.



"The teaching expertise at Royal Holloway, University of London was the main reason I chose to complete my MA in History at the College, as well as its outstanding reputation in research. I hope that following completion of my MA a variety of additional career options will be available to me."

Daniel Hampton, MA in History

An international community

Royal Holloway has a long tradition of educating students from across the world, a tradition encouraged by the international reputation of the University of London degree. Our beautiful 135 acre campus is located in Surrey, just 19 miles west of central London. We offer a relatively safe environment, with easy access to both London and Europe; a 40 minute journey takes you right into the heart of the capital and Heathrow Airport is only seven miles away.

Everyone associated with Royal Holloway – students and staff alike – benefits from the stimulating environment which is created by such a diversity of backgrounds and cultures. Many of our graduates find employment in companies operating on a global level; experience of living and working within the cosmopolitan community at Royal Holloway is a useful preparation for your career ahead.

Support for international students

Royal Holloway prides itself on offering a high level of student welfare support which includes a dedicated support service for international students. Staff are experienced in dealing with welfare issues and practical matters to help ensure your time at Royal Holloway is as productive and enjoyable as possible.

We have an International Student Careers Adviser who organises specific careers events for international students. The Students' Union also has an International Students' Representative who looks after the interests of international students within the Union and the College. The International Representative is part of the Union's welfare service and can be consulted about a range of issues. English Language support for non-native speakers of English is coordinated by Royal Holloway International (see page 30).

At the beginning of each academic year an Orientation Programme is organised for new international students. This is designed to introduce international students to the UK, the College and the local area, and covers a range of practical matters about living and studying here. Throughout the year, trips around the UK and Europe are also organised for international students. Students can join a number of different societies representing particular nationalities and cultures. All these societies welcome students who wish to make friends and share in the culture, entertainment (and often the food!) of a different country.



Scholarships for international students

Each year Royal Holloway offers generous scholarships to Masters students from outside the European Union, who are classified as 'overseas' for fees purposes. These scholarships, which are known as the International Excellence Scholarships, are awarded to candidates who are of outstanding academic ability. The scholarships offer a tuition fee reduction for one year. In addition, country specific scholarship awards exist, including the Santander International Excellence Scholarship, sponsored by Santander. Students from eligible universities in Argentina, Brazil, Chile, Colombia, Mexico, Peru, Portugal, Puerto Rico, Spain, the UK, Uruguay and Venezuela can apply to the Santander International Excellence Scholarship. This award cannot be held in conjunction with the Royal Holloway International Excellence Scholarships. Both scholarship schemes are administered by Royal Holloway International. There are a number of other scholarships administered by academic departments – please turn to page 92 for more details or see our website.

Royal Holloway visits to your country

A number of visits to different countries are organised each year. Representatives and academic members of staff attend education exhibitions, visit schools, and other educational institutions where they provide information and advice to prospective students thinking about studying at Royal Holloway. For a calendar of this year's visits please visit: www.rhul.ac.uk/international/



Royal Holloway is renowned for its friendly and caring community with dedicated support services to help you get the most out of your time here.

Most postgraduate students find that their closest contact is with their departmental advisers and supervisors. The academic welfare of students is supported by College rules, regulations and codes of practice. The Code of Practice for the Academic Welfare of Postgraduate Research Students recognises that successful research depends on both the students' and supervisors' efforts, the research environment in the department, and research training. The Code covers the responsibilities of the student, supervisor and adviser, and also outlines administrative and monitoring procedures. Staff in Student and Academic Services can help with any problems arising from the implementation of the College's guidelines on academic welfare.

The Head of Support and Advisory Services has overall responsibility for central student support and discipline and manages the following services:

- The Student Counselling Service is professionally accredited and offers personal, emotional and psychological support to all students in a confidential, friendly and non-judgemental setting. Help with a complex range of issues is available including stress, anxiety, cultural issues, relationships, sexuality, alcohol and drugs. Coaching sessions on requested topics can be arranged. Workshops are held twice a term for PhD students, aimed at improving coping strategies.
- The College has its own Health Centre for students living on campus or in the local area
- The Residential Support Team promotes a happy hall environment for students living in College accommodation by organising social events and dealing with discipline and welfare issues in hall
- The Community Liaison and Support team provides support for students living off-campus in the local area
- The Student Financial Advice Office provides advice on Access to Learning Funds, budgeting, loans and grants
- The International Student Support Office provides advice on living in the UK as an international student, including immigration and visa advice
- The Educational Support Office (ESO) advises students and staff about educational support for people with hearing and visual impairments, mobility and specific learning difficulties (eg Dyslexia), Asperger Syndrome, special psychological needs and medical conditions. This

includes provision of specialist hardware and software, note-takers, personal helpers and a Specific Learning Difficulties tutor. ESO staff offer advice on available funding for students with disabilities as well as the physical accessibility of the College and related support such as special accommodation. It is important that applicants who may require any of these provisions seek advice from the ESO prior to enrolment so that this can be planned and organised well in advance. A full description of the support and services available to students with special needs can be found in the Handbook for Students with Special Needs and the Access Guide which are available from the ESO or on our website.

- **Chaplaincy & Faith Support.** The College is a multi-faith community with many different beliefs represented on campus and excellent cooperation between faiths. There are two Christian College Chaplains (Anglican and Roman Catholic) who form an integral part of the College's student support. The Chaplains are available to everyone regardless of faith or belief. The College Chapel is fully ecumenical and the Muslim Prayer Room is used by members of the College and the local community. There are various student-led faith societies, and many students are involved in the life of local religious communities. The Chaplains or the Students' Union can provide information about student societies and facilities for other faiths.

The Students' Union has a welfare advice and information service (Just ASC) co-ordinated by the Vice-President, Education and Welfare and the Welfare Adviser, and involving various other union officers

Mature students

Mature students are warmly welcomed at Royal Holloway. At the start of each academic year an orientation session acquaints mature students with the services and facilities available and provides an opportunity to meet other mature students. For mature students who have had a break from formal education, the College offers learning skills tuition designed to revitalise skills such as essay writing, note-taking and time management.

Childcare

Little Echoes (www.littleechoes.co.uk) is an independently-run childcare facility which is located adjacent to the main campus. The Sports Centre on campus also arranges activities for primary age children during school holidays.

For more information on all these services and much more besides please visit: www.rhul.ac.uk/studentlife/



Investing in your future

Royal Holloway graduates are highly employable. They pursue successful careers in many fields – from corporate law to teaching, marketing to environmental conservation. The combination of an internationally respected University of London degree and the opportunity to participate in a wide range of campus activities offers an experience that will prepare you well for the future.

Postgraduate study is often undertaken for career benefit and the Careers Service team at Royal Holloway will work with you to enhance your employability and prepare you for the choices ahead.

The Careers Service

As part of The Careers Group, University of London, Royal Holloway Careers Service offers students access to the largest and most comprehensive Careers Service in Europe. The Careers Centre, situated on campus, offers:

- a readily accessible careers library with our pioneering social bookmarking resource, Careers Tagged
- strong links with graduate employers
- JobOnline advertising part-time work, internships and graduate employment
- an extensive programme of careers seminars and employer presentations throughout the academic year with online booking via the careers website
- staff on hand Monday-Friday to give informal and individual support to users of the Careers Centre

For more information, please visit: www.rhul.ac.uk/careers/

Contact with employers

As part of The Careers Group, University of London, we have strong links with employers and many employers visit campus to speak to students about graduate career opportunities or offer career coaching. Recent visiting employers have included JPMorgan Chase, Procter & Gamble, PricewaterhouseCoopers, The NHS and Enterprise Rent-A-Car. We also organise recruitment events.

Career planning

The Careers Service offers a range of support to help postgraduate students choose a career path from the many options open to them. Targeted career development seminars are delivered in departments and faculties, and paper and online resources are readily available on a self-help basis in the Careers Centre. Our October Careers Fair offers an excellent showcase of the career options available. Students also find careers inspiration at our alumni careers evenings where a group of alumni from a particular degree discipline outline their career paths since graduating and give valuable advice on how to enter their chosen

profession. Additional insider knowledge and contacts may be gained from The Careers Group career taster courses, such as The City Course and Careers in Marketing, Advertising and PR.

Enhancing your job applications

To enhance your chances of job hunting success, we provide detailed briefings on current CV, online application and interview conventions which can be particularly valuable to international students new to the UK job market. We offer CV seminars and personalised feedback on your CV and applications as well as the opportunity to practise interview techniques. We provide preparation for the psychometric tests many employers use, and offer advice on the full range of graduate assessment centre techniques.

After graduation

Royal Holloway Careers Service can continue to help you make the right choices even after you graduate. By subscribing to our GradClub service before leaving College, graduates are offered the opportunity to maintain their access to the expertise of careers advisers and information resources.

Advanced skills

We offer opportunities to develop practical skills to complement your academic studies and to prepare you for your future career. These are open to all postgraduate students and incorporate courses in information technology, and teaching practice. Information technology skills are an essential part of academic and working life and the College's student IT training programme helps students to become competent and versatile computer users. The Certificate in Skills of Teaching to Inspire Learning (inSTIL) programme aims to assist postgraduate research students in developing the necessary skills, experience and confidence to teach in Higher Education. Attendance is required for any postgraduate in a lead teaching role at Royal Holloway.

“We want to ensure that a Royal Holloway degree is an investment for life, securing privileged access to our events, facilities, networks and support through an active and involved alumni community”

Alumni Relations and Development

A lifelong connection to the College and each other means your Royal Holloway experience doesn't end when you graduate.



If you want to keep in touch with former classmates and friends or simply want to stay up-to-date on the latest news, reunions, and events, the Alumni Relations Office provides the necessary links to the College and each other.

Over 40,000 alumni – of Royal Holloway, Bedford and the combined Colleges – are in touch with the College on a regular basis, either by making use of services offered, or by volunteering to assist with events and programmes. Our Alumni Relations team works with alumni volunteers to organise national and international alumni groups, host reunions, provide advice to students, and serve on various College committees. Alumni also sit on College Council, strengthening the link between the College and its alumni.

We aim to ensure that the links between current students and alumni are maintained. Organised by Royal Holloway's Careers Centre, Careerlink provides an opportunity for alumni to share knowledge and skills with students curious about their professions. It facilitates communications between students and alumni who may offer guidance either one-on-one, or as part of the Centre's careers seminars.

Alumni receive regular updates through our electronic Alumni Update newsletter and Alumni and College news is also available in print through our *Higher* magazine.

We are committed to creating a global network of Royal Holloway, University of London alumni so that wherever you are, the possibilities for a lifetime connection are there for you.

From left-right: Anna Hemmings (2001), World champion canoeist; Jeremy Northam (1984), Film actor; Dame Felicity Lott (1968), International opera singer; Professor David Bellamy OBE (1960), Botanist and TV series presenter; Mary Nightingale (1985), TV news presenter; KT Tunstall (1996), Singer-songwriter; Baroness Ashton (1977), EU Foreign Minister.



Further details

The Alumni Relations Office
T: +44 (0)1784 276469
F: +44 (0)1784 276418
alumni@rhul.ac.uk
www.rhul.ac.uk/alumni/



Studying at Royal Holloway

27-34



Information services

Library Service & IT Department

Royal Holloway places great importance on the provision of user-friendly information services. The Library Service and IT Department work together to provide integrated support for you, from your first day until you graduate. We are continually improving our services, investing in the very latest technology and introducing more innovative learning spaces to meet the needs of today's students.

The College's Virtual Learning Environment (VLE), Moodle, provides interactive access to a wide range of learning resources, including course material, from both on and off campus. Additionally, the Campus Connect portal service enables students to easily access a wide range of services, including College email, course details and course registration and payment.

Getting help with your IT and Library queries

The Service Desk at tlc@bedford provides a single point of contact for standard IT and Library queries. Staff are on hand to help, and if detailed specialist help is required they will guide you to the right person. There are also Student IT Advisers available in the Bedford Library outside of office hours during term time everyday except Friday, and a Helpdesk in the Founder's Library.

A programme of IT and information skills training is available to all members of the College. Sessions are available at various levels from induction onwards and are designed to enhance and develop knowledge in a wide range of PC applications and library resources.

The Library Service and IT Department regularly assess how well they meet student needs, and encourage feedback through staff-student committees, user forums, and periodic surveys.

The Library Service

Royal Holloway's extensive Library is an essential part of the College's support for students and staff. It has a stock of more than 600,000 volumes (including a large collection of DVDs, CDs etc), subscribes to over 17,000 journal titles, the majority of which are available online, and has around 800 study spaces. There is a large and growing collection of e-books. These resources are housed in the two campus libraries: Bedford Library and Founder's Library. Students also have access to the College archives; these house the records of our founding Colleges of Bedford and Royal Holloway, and are an important record of the history of women's education.

Recent substantial investment in the Bedford Library has provided a refurbished 170 seat silent study area with improved lighting, better access to the stock and an extended wireless network. This complements the

innovative 205 seat Social Learning Space, tlc@bedford, an IT rich group-study facility, with whiteboards, loanable IT equipment such as laptops and e-book readers, and a café.

Bedford and Founder's Libraries have long term-time opening hours (8.30am to 1.00am Monday – Thursday; 8.30am to 8.00pm Friday; 11.00am to 9.00pm Saturday & Sunday), including 24/7 opening in the Bedford Library prior to and during the examination period. PC Labs around campus are accessible 24-hours, seven days a week.

The library service manages its stock and resources to ensure students have as much access to materials as possible. This includes placing stock in heavy demand in the Short Loan Collections, building on our large collection of e-books, providing digitised course packs and purchasing multiple copies of texts wherever possible. You can discover all of the library's print and online resources through our easy-to-use Library Search facility.

The College's proximity to London enables members to take advantage of the vast facilities and services of many university, national and specialist libraries in the capital. Students of Royal Holloway have access to all other libraries in the University of London, in particular the Senate House Library where access is also possible to their wide range of e-resources. For more information visit:

www.rhul.ac.uk/library/

IT Department

All students are encouraged to utilise IT facilities in support of their learning and research. Therefore, the College is committed to helping students develop IT and information management skills, which can be applied at university and subsequently transferred into the workplace. To this end, training and support is readily available.

Students can access the College network using their own computer equipment via network access points in study rooms and at other locations around the campus including the Computer Centre and Libraries. There is a wireless network which enables access throughout most parts of the College, including lecture theatres. Additionally, access to many IT facilities is available off campus, for example to enable working from home and access to the Library's e-resources.

A number of PC Labs containing a wide range of applications are available within the Computer Centre and around the campus, of which most are accessible 24-hours a day. A PC Lab is also located at our Bedford Square base in London. For more information visit:

www.rhul.ac.uk/IT/



"The Bedford Library is really nice and welcoming. I think it's great that you've got somewhere to do group work but still the option of private study areas upstairs. Also, I think the café is a good idea as it encourages people to stay and study longer."

Louise Boyd, Biomedical Sciences

Royal Holloway International

Royal Holloway International brings together internationally-focused activities at the College. The Department's responsibilities include:

- enhancing study abroad and student exchange activity (see page 32)
- developing partnerships world-wide
- offering a range of English language support and preparation programmes

English language programmes and courses for international students

There are a number of programmes and courses provided to help support international students with their English language needs and develop their academic study skills.

This provision is divided between:

- Programmes for students preparing for degree studies at Royal Holloway
- In-sessional English courses for all students who speak English as a foreign language

Programmes for students preparing for degree studies at Royal Holloway:

The Pre-sessional English Language Programme starts in late June and ends shortly before the start of our academic year in late September. It is offered to all international undergraduates and postgraduates and aims to develop their academic language skills as well as introduce them to the academic environment at Royal Holloway. Students can join this programme for either four, eight or twelve weeks, depending on their level of English. A separate tuition fee is charged for this programme, and accommodation on campus is available, if required.

The Pre-Masters Diploma for International Students is designed to enable international students who are unfamiliar with the requirements and complexities of postgraduate study in the UK to acquire the academic skills needed to succeed at graduate level. The programme focuses on the acquisition of English language, study and research skills, and particular attention is paid to familiarising students with the critical and analytical skills needed at the postgraduate level. This nine month programme leads to a Royal Holloway Diploma.



The Diploma is taught over the three terms of an academic year (ie from late September to the middle of the following June) and offers a number of key features:

- a well-structured framework within which students can develop English language skills appropriate to the requirements of the British academic and social environment
- an independent research project in an area relating to the student's field of academic interest under the supervision of an English language specialist and a subject specialist
- academic study in an academic department at Royal Holloway which relates to the student's area of academic interest
- a weekly individual tutorial from an English language specialist
- training for the IELTS examination, which is taken during the Diploma year
- a Royal Holloway Diploma awarded to all students who successfully complete the programme

Applicants will normally be required to have completed a first degree with grades that are of a sufficiently high standard to qualify for graduate study at a university in the UK. Consideration will also be given to applicants over the age of 24 who do not have the equivalent academic qualifications, but have substantial work experience.

Applicants are usually required to have a standard of English at least equivalent to an IELTS score of 5.5 (with no sub-score below 5.5) or TOEFL iBT with minimum scores of: Listening - 21; Reading - 22; Speaking - 23; Writing - 21. Applicants with lower English language scores may also be considered, but would be required to participate in the Pre-sessional English Language Programme run by Royal Holloway International. For further information on the entry requirements, please see

www.rhul.ac.uk/international/englishlanguage/

In-sessional English courses for all students who speak English as a foreign language:

In-sessional English courses are taught during the first two terms of the academic year. These courses focus on the development of specific academic skills. They help students to improve their written and spoken English and develop strategies for studying in a foreign language. These courses are free to all full-time students, although a small charge is made to cover the costs of teaching materials.



Further details

Royal Holloway International
T: +44 (0)1784 443829
F: +44 (0)1784 477640
RHI-Admissions@rhul.ac.uk
www.rhul.ac.uk/international

Student exchange

Royal Holloway has an international reputation for teaching and research. It is a truly cosmopolitan community with a long tradition of links with universities and research institutions throughout the world. These links bring many internationally renowned academics and research students to the campus, and also provide opportunities for Royal Holloway students to spend valuable time abroad, thus gaining an international perspective on their work.

The universities listed are examples of our global partnerships. For more information, please visit:

www.rhul.ac.uk/international

For Royal Holloway students going abroad

As a postgraduate currently registered at Royal Holloway, you can apply to be nominated to one of our partner universities around the world.

Your time spent at the host institution should form an integral part of your research and must not extend the overall length of your studies. In order to be eligible for consideration, you will normally be required to have completed one year of your research programme at Royal Holloway and, in the case of students intending to complete a PhD, you will need to already have successfully upgraded from MPhil to PhD. In addition, you will need to have identified a suitable programme of study or research activity at the relevant host institution.

The postgraduate exchange scheme is primarily aimed at research students.

For international students coming to Royal Holloway

Visiting students study an extensive range of courses, covering the arts and humanities, social sciences and sciences. These courses are intellectually stimulating, and are taught by highly qualified academic staff who are leading specialists within their field. In addition, those seeking to develop their English ability can take the in-session English courses which are designed to develop academic study skills.

All our international exchange students benefit from the College's student services which offer practical help as well as pastoral care (see page 22).



Australia

- University of Melbourne
- University of Sydney
- University of Western Australia, Perth



Canada

- University of Alberta, Edmonton
- Concordia University
- University of Ottawa
- University of Toronto



France (Erasmus programme)

- Université Paris-Sorbonne (Paris IV) (for PhD students in the Music Department)



Germany (Erasmus programme)

- Humboldt-Universität zu Berlin (for PhD students in the Music Department)



Greece (Erasmus programme)

- Ionian University, Corfu (for PhD students in the Music Department)



Hong Kong

- The University of Hong Kong



Japan

- Keio University, Tokyo
- Ritsumeikan University, Kyoto
- Waseda University, Tokyo



Korea

- Korea University



New Zealand

- Victoria University of Wellington



Singapore

- National University of Singapore



Turkey (Erasmus programme)

- Koç University, Istanbul (for PhD students in the Politics and International Relations Department)



United States

- Arizona State University
- Boston College
- University of Florida
- New York University
- Northwestern University (for Classics PhD students only)
- Yale University (for English or History PhD students only)

“The work was enjoyable, has proved directly useful for my thesis and I have made what I hope will be lasting relationships with American playwrights and academics.”

**Barbara Norden, New York University,
Drama & Theatre**





Distance learning with the University of London

Established in 1858, the University of London International Programmes is the world's first distance learning system. The International Programmes provide undergraduate and postgraduate degree courses in over 80 disciplines in more than 180 countries. Typically, for each degree programme, one of the colleges of the University of London takes the lead role in designing and delivering a given external course.

There are many benefits to taking a distance learning programme:

- the degree structures allow you to learn at your own pace from home
- the online study materials have been specifically designed for ease of distance learning
- in most cases, registration, tuition and examination fees are lower than campus-based charges
- assessment and standards are set at the same level as residential degrees and you will receive the same award as residential students, so you can be confident in the quality of your qualification
- written examinations can usually be taken at local centres close to you
- the final award is a degree from the University of London

Royal Holloway plays a key role in delivering the University of London International Programmes in a number of disciplines. Please refer to the website for details.

Extensive guidance is offered to students through written materials, which provide both general advice on studying for those degrees and detailed discussions relating to each component in the degree programmes.

The online, flexible, distance learning programmes are delivered using a mix of online and traditional materials, with annual exams at the University of London International Programmes' worldwide network of exam centres.

Royal Holloway's e-degrees are one of the fruits of a five-year College Strategy to develop a hybrid campus with highest-quality learning support for local and remote delivery of teaching. Dozens of Royal Holloway's internal degree courses – including poetry, human geography and history – incorporate online learning resources.

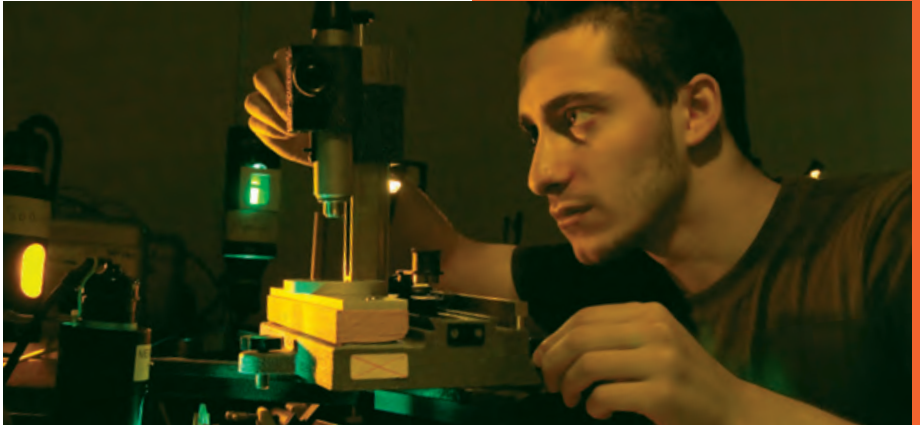
To support our distance learning programme, Royal Holloway provides pedagogic, administrative and online developmental support to the contributing academics ensuring the integration of relevant web-based learning tools into course content including moderated online discussions, online quizzes and animations.

Further details

The Information Centre,
University of London
Stewart House, 32 Russell Square
London WC1E 7HU
enquiries@london.ac.uk
www.londonexternal.ac.uk



Departments 35–88



Guide to Masters degrees and Postgraduate Diplomas

Faculty of Arts & Social Sciences	Full-time/part-time/ distance learning	Duration (months)	Page ref.
Advanced Musical Studies (MMus)	FT/PT	12/24	76
Advanced Practice (MSc)	PT	36/60	86
Ancient History (MA)	FT/PT	12/24	40
Classical Art & Archaeology (MA)	FT/PT	12/24	40
Classics (MA)	FT/PT	12/24	40
Creative Writing (MA)	FT/PT	12/24	52
Crusader Studies (MA)	FT/PT	12/24	56
Democracy, Politics & Governance (MSc/Diploma)	FT/PT	9/12 20/24	80
Documentary by Practice (MA)	FT	12	68
Drama Research (MA)	FT/PT	12/24	46
English Literature (MA)	FT/PT	12/24	52
European Politics (MSc/Diploma)	FT/PT	9/12 20/24	80
French by Research (MA)	FT/PT	12/24	71
German by Research (MA)	FT/PT	12/24	71
Global Politics (MSc/Diploma)	FT/PT	9/12 20/24	80
History (MA)	FT/PT	12/24	56
Hispanic Studies by Research (MA)	FT/PT	12/24	71
History: Hellenic Studies (MA)	FT/PT	12/24	58
Holocaust Studies (MA)	FT/PT	12/24	59/73
International Broadcasting (MA)	FT/PT	12/24	68
International Relations (MSc/Diploma)	FT/PT	9/12 20/24	80
International Relations Theory (MSc/Diploma)	FT/PT	9/12 20/24	80
Italian by Research (MA)	FT/PT	12/24	71
Late Antique & Byzantine Studies (MA)	FT/PT	12/24	58
Life Writing (MA)	FT/PT	12/24	52
Literatures of Modernity: Modernism, Postmodernism, Postcolonialism (MA)	FT/PT	12/24	52
Medieval Studies (MA)	FT/PT	12/24	52/56
Modern Philosophy (MA)	FT/PT	12/24	40
New Political Communication (MSc/Diploma)	FT/PT	9/12 20/24	80
Physical Theatre (Postgraduate Certificate)	PT	9	46
Playwriting (MA)	FT/PT	12/24	46
Poetic Practice (MA)	FT/PT	12/24	52
Political Research (MSc/Diploma)	FT/PT	9/12 20/24	80
Political Theory (MSc/Diploma)	FT/PT	9/12 20/24	80
Producing Film & Television (MA)	FT	12	68
Public History (MA)	FT/PT	12/24	56
Social Work (MSc)	FT	24	86
Screenwriting for TV & Film (Retreat) (MA)	PT	24	68
Shakespeare (MA)	FT/PT	12/24	52
Theatre (MA)	FT/PT	12/24	46

Faculty of Arts & Social Sciences continued	Full-time/part-time/ distance learning	Duration (months)	Page ref.
Transnational Security Studies (MSc/Diploma)	FT/PT	9/12 20/24	80
Victorian Literature, Art & Culture (MA)	FT/PT	12/24	52

Faculty of Science	Full-time/part-time/ distance learning	Duration (months)	Page ref.
Applied Social Psychology (MSc)	FT/PT	12/24	82
Biological Sciences Research (MSc)	FT	12	38
Business Information Systems (MSc)	FT/PT	12/24	42/62
Clinical Psychology (Doctorate)	FT	36	82
Cognitive Behavioural Therapy (MSc/Certificate/Diploma)	PT	18	82
Computer Science by Research (MSc)	FT/PT	12/24	42
Cultural Geography (Research) (MA)	FT/PT	12/24	54
Environmental Diagnosis & Management (MSc)	FT/PT	12/24	48
Euromasters in Physics	FT	24	78
Geology by Research (MSc)	FT	12	48
Geology (Graduate Diploma)	FT	12	48
Geopolitics and Security* (MSc/Diploma)	FT/PT	12/24	54
Human Neuroscience (MSc)	FT/PT	12/24	82
Information Security (MSc/Certificate/Diploma)	FT/PT/Distance learning	12/24/48	61
Mathematics for Applications (MSc)	FT/PT	12/24	66
Mathematics of Cryptography & Communications (MSc)	FT/PT	12/24	66
Nanotechnology & Low Temperature Physics (MSc)	FT/PT	12/24	78
Petroleum Geoscience (Basin Evolution) (MSc)	FT/PT	12/24	48
Petroleum Geoscience (Tectonics) (MSc)	FT/PT/Distance Learning	12/24	48
Physics by Research (MSc)	FT/PT	12/24	78
Practising Sustainable Development (MSc/Diploma)	FT/PT	12/24	54
Quaternary Science (MSc)	FT/PT	12/24	54
Sustainability & Management (MSc)	FT	12	54/62

Faculty of Management & Economics	Full-time/part-time/ distance learning	Duration (months)	Page ref.
Asia Pacific Business (MA)	FT	12	62
Business Information Systems (MSc)	FT/PT	12/24	62
Economics (MSc/Diploma)	FT	12/9	50
Entrepreneurship (MSc)	FT	12	62
European Business (MA)	FT	12	62
Financial Economics (Diploma)	FT	9	50
Financial & Industrial Economics (MSc)	FT	12	50
International Accounting (MSc)	FT	12	62
International HRM (MSc)	FT	12	62
International Management (MBA)	FT/Distance learning	12/24-60	65
International Management (MSc)	FT	12	62
Leadership & Management in Health (MSc)	FT/PT	12/24	63
Marketing (MA)	FT	12	62

Biological Sciences

Faculty of Science

www.rhul.ac.uk/biologicalsciences/

The School of Biological Sciences has an active and expanding research programme based on its three research centres: Biomedical Sciences; Ecology Evolution and Behaviour; and Plant Molecular Sciences.

Profile

We provide a stimulating environment for research training and were ranked joint third in the UK in recognition of the internationally competitive quality of our research in the most recent Research Assessment Exercise. Research collaborations and the sharing of scientific and technical expertise takes place across the whole School. There is also active collaboration with other departments at Royal Holloway, and with other universities and research organisations both in the UK and overseas.

There are more than 30 permanent members of academic staff in the School, and there is an on-going programme of new appointments. The School also has 30 postdoctoral Research Fellows and Assistants, and around 40 postgraduate students. All are housed in well-equipped laboratories in the centre of the campus.

Funding for our research comes from the European Commission, UK Research Councils (BBSRC, EPSRC, MRC and NERC), medical research charities, wildlife and environmental organisations, commercial organisations and government agencies.

We are partners in the South West London Academic Network (SWAN – www.swlacademicnetwork.ac.uk), a unique alliance between Royal Holloway, Kingston University, and St George's, University of London (formerly St. George's Medical School). The SWAN alliance is active in enhancing postgraduate provision through the pooling of expertise and resources in the sister departments across the three institutions.

Taught programmes

MSc Biological Sciences Research Main campus; FT; 12 months

This programme is ideally suitable both for graduates who would like to undertake original research without committing themselves to a three-year PhD, and to students who want to gain a research-based Masters before embarking on a PhD. There is a minor taught element, with classes covering a wide range of generic research-related topics.

The major element is a research project carried out under supervision. Projects within any of our three research centres are offered. Potential applicants should visit our postgraduate webpage for more detailed information www.rhul.ac.uk/biologicalsciences/prospectivestudents/postgraduatetaught/

Enquiries to the Course Director, Dr Pavlos Alifragis, are welcomed.

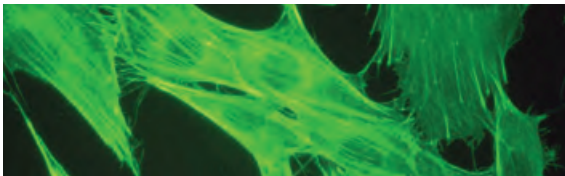
Other MSc Courses

The School also participates in the teaching of two SWAN MSc. In both cases this includes the running of research projects. One of these is the Molecular Neuroscience arm of the St George's University of London MRes in Biomedical Sciences www.sgul.ac.uk/postgraduate/taught-courses/mres-in-biomedical-science/course-structure-1. The other is the Biotechnology MSc course of Kingston University www.kingston.ac.uk/postgraduate-course/biotechnology-msc/

Research opportunities

Applicants are invited for postgraduate research places leading to a PhD. Applicants should have, or be expecting to gain, a Bachelor's degree in an appropriate biological subject of at least Upper Second Class Honours (2:1), or equivalent. The School has a number of PhD studentships for award each year, with funding from UK Research Councils, institutional sources, companies and charities.

All staff can accept suitably qualified PhD entrants who are able to obtain studentships, or who have alternative means of support. Applicants are invited to email academic staff with whom they are interested in working to discuss potential projects. A list of our academic staff is available by clicking on the 'Researchers' tab on our research webpage. Clicking on the individual staff names in this list will bring up their individual research webpages.



“Our MSc is designed to equip you with the generic skills of a researcher in Biological Sciences and provide major hands-on experience. We have pioneered the provision of such training and our students achieve excellent results.”

**Pavlos Alifragis, Programme Director,
MSc Biological Sciences Research**

Research interests

- The **Biomedical Sciences Research Centre** focuses around four main themes: Molecular genetics of inherited diseases, neurobiology, cell signalling, and developmental biology. Areas of strength include: gene therapy, nervous system development and regeneration, molecular genetics of sporulation in *Bacillus subtilis*, membrane vesicle trafficking, and molecular biology of protozoan parasites.
- The **Ecology, Evolution and Behaviour Research Centre** focuses on aquatic ecology, molecular ecology, ecology of multitrophic interactions, applied entomology, ecology of birds, fish and mammals, conservation of endangered species, and mathematical modelling in ecology and evolution.
- The **Plant Molecular Sciences Research Centre** is addressing, a number of fundamental aspects of plant development, reproduction and metabolism at the cellular and molecular level. Areas of strengths include: Plant cell wall biochemistry and disease resistance, genetic manipulation of carotenoid biosynthesis, cytoskeletal dynamics, photocontrol of gene expression, and organ senescence.

Research facilities and partners

The School has extensive facilities and equipment to support work throughout the research centres. Our laboratories are currently undergoing substantial refurbishment. Major facilities include marine and freshwater aquaria, level 3 ACGM containment suite, environmentally-controlled plant growth rooms and glass houses, electrophysiology suite, hplc systems with a wide range of detectors, confocal microscopy, RT-PCR, GC-mass spectrometry, MALDI-TOF mass spectrometry, and liquid chromatography tandem mass spectrometry. Research facilities are also located very close to the main campus at the UK Centre of CABI Bioscience, and at the Government Veterinary Laboratories in Weybridge, with whom we have joint PhD studentships. Through the SWAN alliance there is access to facilities and expertise at the partner institutions.

Career prospects

In recent years our postgraduates have entered into many interesting careers. These include postdoctoral research both in the UK, for instance at the Royal Free Hospital, London, and overseas, for example at New York University. Other interesting career positions include Senior Keeper in Herpetology at London Zoo and Species Recovery Officer at Plantlife International.

At a Glance

Programmes

MSc Biological Sciences Research
MPhil/PhD

Number of places 30

Fees and financial advice

See Funding your studies on page 90

How to apply

See Admissions process on page 94

Contact details

Dr Chris Rider
Director of Graduate Studies
T: +44 (0)1784 443548
F: +44 (0)1784 414224
c.rider@rhul.ac.uk

Professor Alan Gange
Head of the School
T: +44 (0)1784 443188
F: +44 (0)1784 414224
a.gange@rhul.ac.uk

Dr Pavlos Alifragis
MSc Research Programme Director
T: +44 (0)1784 444988
F: +44 (0)1784 414224
pavlos.alifragis@rhul.ac.uk

Tracey Jeffries
Postgraduate Administrator
T: +44 (0)1784 443559
tracey.jeffries@rhul.ac.uk

The Classics & Philosophy Department at Royal Holloway is a thriving and internationally recognised research centre. Royal Holloway has a vibrant research culture and an active graduate community drawing students from across the globe. As part of the University of London, we belong to the major research centre in the country and offer a distinctive postgraduate experience.

Profile

Academic staff in Classics teach and research across the range of Classical Studies from Homeric Greece to the very end of the Roman Empire. Academic staff in Philosophy teach and research in Ancient Philosophy, Modern European Philosophy, and Analytical Philosophy. In Classics we have two research centres, the Centre for the Reception of Greece and Rome (CRGR) and the Centre for Oratory and Rhetoric (COR) and the research interests of individual staff embrace language, literature, history, ancient philosophy, and Greek and Roman archaeology. Research in Philosophy is particularly focused on the relations between European and Analytical Philosophy, German Philosophy, Aesthetics, and Pragmatism. Our 18 staff currently supervise more than 43 research students and provide four different MA programmes.

Taught programmes

The Department offers four taught programmes: MA in Ancient History; MA in Classics; MA in Classical Art and Archaeology; MA in Modern Philosophy. A further taught programme, the MA in Late Antique and Byzantine Studies, is offered by the History Department (see page 56). The Classics programmes are intercollegiate, offered jointly with King's College London and University College London. Together, they offer an unparalleled range of courses that provides for around 70 students per year.

On the Classics MAs students study from a menu of courses which covers not only Greek and Latin literature, the major periods of ancient history, ancient philosophy and the Greek and Latin languages, but also key technical skills such as papyrology, epigraphy, and palaeography, and skills of independent research. The programmes provide ideal training for those considering going on to a PhD, as well as an additional year of high level study for those seeking to add to their undergraduate qualification.

On the MA in Modern Philosophy the concentration is on equipping you to work both on European and on Analytical Philosophy, and on the relationship between the two, which is becoming a central issue in contemporary philosophy.

MA Ancient History

Main Campus/Central London; FT/PT; 12/24months

This MA offers opportunities both to experience the great range of ancient historical studies and to specialise in key areas. We offer courses on periods from Near Eastern History to the Byzantine Empire in which a vast range of methodologies are deployed and sources considered.

MA Classics

Main Campus/Central London; FT/PT; 12/24months

This MA offers opportunities to study the full range of Classical literature and language. Students may improve their languages or learn new technical skills. The range of courses covers ancient philosophy, Greek and Latin literatures from Homer to Late Antiquity, and Classical Reception.

MA Classical Art and Archaeology

Main Campus/Central London; FT/PT; 12/24 months

This programme is designed to provide training in the techniques of art history and archaeology, and offers a wide range of courses on Greek and Roman art and archaeology from all parts of the Mediterranean world.

MA in Modern Philosophy

Main Campus/Central London; FT/PT; 12/24months

This MA offers opportunities to study the main developments in Modern Philosophy since Kant. Two main core courses: 'The European Philosophical Trajectory: from Kant to the Present' and 'The Analytical Trajectory: from Frege and Wittgenstein to the Present' are accompanied by a range of options.

Research opportunities

We welcome applications for postgraduate research leading to the PhD degree in any aspect of Classics and of Philosophy. Applicants should have, or expect to be awarded, a first degree with Upper Second Class Honours (2:1), or the equivalent, and also, normally, a Masters degree, or the equivalent. All staff can supervise suitably qualified PhD students. If you already know the name of an academic staff member with whom you would like to work, please email them to discuss possible projects; otherwise, contact the Director of Graduate Studies who will help to find you an appropriate supervisor. Staff details can be found on our website.

Particular areas of expertise in the Department include:

- Homer
- Greek drama and its reception
- The Greek novel
- The Second Sophistic
- Latin language
- Oratory, rhetoric and advocacy ancient and modern



“With weekly seminar groups and the encouragement to participate in conferences, the PhD is never a lonely business. Royal Holloway is a great place to live and work: I would definitely recommend it to anyone interested in doing a postgraduate degree.”

Kathryn Tempest, PhD in Classics

- Cicero
- Greek and Roman historiography
- Latin poetry, Republican, Augustan and Imperial
- Greek architecture and architectural reconstruction
- Roman art
- The archaeology of Rome and Latium
- Greek law
- Hellenistic history and epigraphy
- Military and naval history
- Roman social and economic history
- The cultural history of the imperial period
- Literary, political and social theory
- Greek Philosophy from Plato to the Neoplatonists
- Ancient literary criticism
- German Philosophy
- Relationships between analytical and European Philosophy
- Aesthetics
- Philosophy and Music
- History of Philosophy
- Philosophy and Literature
- Pragmatism
- Epistemology
- Metaphilosophy.

Research facilities

The Department runs research training seminars for graduate students, Departmental research seminars, and, as part of the University of London, participates in one of the most extensive programmes of research seminars offered by any institution. The Institute of Philosophy offers a very broad range of seminars and lectures on all areas of Philosophy. The Centre for the Reception of Greece and Rome and the Humanities and Arts Research Centre (HARC) run a series of events. Alongside the good range of research resources offered by the Royal Holloway library, our postgraduate students have access to the world-class library resources of the Institute of Classical Studies, the Warburg Institute, the British Library, the Institute of Germanic and Romance Studies Library, and Senate House Library. The Department provides computer facilities for research students and students may apply to Departmental funds for certain research expenses.

Career prospects

In recent years a number of our PhD graduates have entered the academic profession; teaching careers in the UK and overseas; archaeological and museum work; and a wide range of other careers and professions.

At a Glance

Programmes

MA Ancient History
MA Classical Art & Archaeology
MA Classics
MA Late Antique & Byzantine Studies (see page 66)
MA in Modern Philosophy
MPhil/PhD in Ancient History
MPhil/PhD in Classical Archaeology
MPhil/PhD in Classics
MPhil/PhD in Philosophy

Number of places

No fixed number of places

Fees and financial advice

See Funding your studies on page 90

How to apply

See Admissions process on page 94

Contact details

For PhD/MPhil in Classical subjects:

Professor Jonathan Powell MA, DPhil (Oxon)
Director of Graduate Studies,
T: +44 (0)1784 443209
J.Powell@rhul.ac.uk

For Philosophy MA, MPhil/PhD

Professor Andrew Bowie MA (Cantab)
PhD (UEA)
T: +44 (0)1784 443198
a.bowie@rhul.ac.uk

For MA Classics, Ancient History, Classical Art and Archaeology:

Dr Jari Pakkanen MA, DrPhil (Helsinki)
T: +44 (0)1784 443211
j.pakkanen@rhul.ac.uk

Professor Anne Sheppard, MA, DPhil (Oxon)
Head of Department
T: +44 (0)1784 443417
a.sheppard@rhul.ac.uk

Mrs Sharon Shellock
Postgraduate Administrator
T: +44 (0)1784 443417
F: +44 (0)1784 276435
Sharon.Shellock@rhul.ac.uk

The Department is a world leader in machine learning, data mining and fundamental areas of theoretical computer science, and carries out outstanding work in bioinformatics and computational biology, distributed architectures, and vision and signal processing.

Profile

The Department's research culture is organised around three main research groups on Machine Learning, Bioinformatics and Theory of Computing, each led by a group of internationally renowned researchers. Research students are important members of this research community and are encouraged to play an active part by giving informal presentations on their work, participating in regular departmental seminars and colloquia. They also attend conferences and workshops, as well as visiting other institutions in the UK and overseas.

We have a regular programme of talks by visiting academics from Europe and America, and students often attend seminars at other colleges of the University of London.

The Department provides regular training sessions on research skills and postgraduates enjoy a lively intellectual environment with regular contact with their supervisors.

Our research is strongly supported by external funding (in excess of £3.5 million in the past decade, from the EPSRC, BBSRC, government agencies, the European Union, Royal Society, British Council, Nuffield Foundation and industrial collaborators). The Department receives doctoral training funds from the EPSRC and many postgraduates are funded by industry, either directly or through EPSRC CASE awards. The 2008 Research Assessment Exercise ranked us among the best departments in the UK based on the international quality of research publications produced in the Department.

Taught programmes

For admission to MSc programmes in the Department, applicants are normally required to have at least a Second Class Honours degree or equivalent.

MSc Business Information Systems Main campus; FT/PT; 12/24 months

Taught in conjunction with the School of Management, this course meets the increasing need for information systems capability within businesses and combines computing technologies and business management principles. The programme comprises three core courses: Information Systems Theory and Practice; People and

Technology; Information Systems Design, Development and Management; four courses chosen from a range of options; and the individual dissertation.

Research opportunities

Applicants for a PhD are expected to have, or to be awarded, at least an Upper Second Class Honours (2:1) degree or equivalent. Home students are invited to attend the Department for an interview and international students are advised to take the GRE or a comparable test. Mature students with industrial experience are encouraged to apply.

All academic staff are available to supervise PhD students. If you are interested in working with a particular academic staff member, you are encouraged to email them directly to discuss potential projects. Staff details are given on our website.

Each year the Department normally has a limited number of scholarships which are awarded on merit.

MSc Computer Science by Research Main campus; FT/PT; 12/24 months

This programme provides substantial, supervised research experience and intensive teaching of research skills and techniques. It consists of a major research project chosen from a number of strands, including Machine Learning; Discrete Optimisation; Constraints; Languages and Architectures; Multi-Agent Systems and Bioinformatics; as well as taught courses on the chosen strand and workshops on research techniques. This programme offers a brief experience of research without the same time commitment as a PhD.

Research interests

There are three main groups, and there is a significant amount of overlap between them:

- **Bioinformatics** – sequence data of DNA and proteins, such as data from the Human Genome Initiative, protein structure prediction, systems biology, population genetics and epidemiology.
- **Computer Learning** – universal prediction, Support Vector Machines, foundations of probabilistic reasoning, the theory of Kolmogorov and predictive complexity, online prediction with expert advice, transductive inference, computational finance, string kernels and grammatical inference; vision and signal processing in astronomy; and data mining in finance and economics. Acknowledged as world leaders in this field, the group have formed the Computer Learning Research Centre.



"At Royal Holloway there are opportunities to work on Bioinformatics, which is an important field in Computer Science these days. Apart from the research opportunities in the Department, the staff are very friendly, patient and have helped me a lot."

**Arash Rafiey Hafshejani,
PhD in Computer Science**

- **Theory of Computing** – graph theory and combinatorial optimisation, algorithms and complexity theory, constraint satisfaction; compilers, type theory and computer-assisted reasoning; distributed architectures including semantic Web-Services, cognitive agents and multi-agent systems; languages and software for embedded systems.

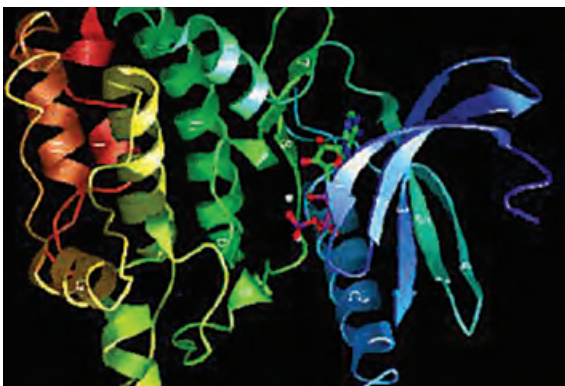
Further information about the Department's research interests can be found on our website.

Research facilities

The Department provides a variety of state-of-the-art networked computer facilities accessed from desktop X terminals and PCs. Our thin-client environment gives all users access to the hundreds of applications in SUSE Linux, as well as standard Microsoft products. There is fast internet access and students can use a wide range of specialist research software. Taught postgraduates use computers in labs open 24-hours a day. Research postgraduates are allocated their own desk and terminal in shared offices. Students with laptops are free to connect them to the network, either directly or via a wireless connection. There is also convenient access to library facilities and electronic journals.

Career prospects

The Department of Computer Science prepares graduates for successful careers in a variety of industries, such as banking and finance, higher education, IT and electronics and management consultancy. Many of our graduates go on to academic and research jobs or prestigious jobs in the highly competitive areas of finance or banking. Recent examples include jobs at Dresdner Kleinwort investment bank, the University of Edinburgh, IDSIA in Switzerland, and the top derivatives exchange in Moscow.



At a Glance

Programmes

MSc Business Information Systems
MSc Computer Science by Research
PhD Computer Science

Number of places Variable

Fees and financial advice

See Funding your studies on page 90

How to apply

See Admissions process on page 94

Contact details

Professor David Cohen
Director of Graduate Studies
T: +44 (0)1784 443421
F: +44 (0)1784 439786
depsec@cs.rhul.ac.uk

Professor Adrian Johnstone
Head of Department
T: +44 (0)1784 443421
F: +44 (0)1784 439786
depsec@cs.rhul.ac.uk

Janet Hales
Postgraduate Administrator
T: +44 (0)1784 443432
F: +44 (0)1784 439786
j.hales@cs.rhul.ac.uk

Centre for Criminology & Sociology

Faculty of Management & Economics

www.rhul.ac.uk/Crim-Soc/

Profile

We undertake a wide variety of research in the national and international arena. We develop, and support, theoretically informed and policy relevant research in a variety of areas. Our students come from a variety of backgrounds and we welcome applications from international students.

In the 2008 Research Assessment Exercise research into risk violence and health were assessed as indicating 'evidence of world leading quality'.

Research interests

Staff have a variety of research interests including risk, violence, health care organisation, chronic illness, restorative justice, race and identity, youth crime and youth culture, gender and public spaces, mental health policy/practice, nursing and NHS Direct, patient partnership, criminal justice.

MPhil/PhD Programme

The Centre has an MPhil/PhD programme currently with 12 students.

Examples of current MPhil/PhD topics:

- Accounting for and managing risk in sex work
- Palliative care in Portugal
- Persistent violent offending
- The impact of violence on child protection workers

Research facilities and partners

The Centre works in close partnership with a number of statutory and voluntary agencies, including Royal Brompton and Harefield NHS Trust; child care agencies such as the NSPCC; St George's, University of London, and international pharmaceutical companies. Access to our courses and research events is enhanced by our central London base at Bedford Square, as well as the main departmental location in Egham. Regular research seminars and support seminars are held for research students.

Career prospects

Postgraduate qualifications in Criminology are relevant to careers in criminological research, the Probation, Prison, and Police Services. They provide the basis for further academic research and training.

At a Glance

Programmes

MPhil/PhD

Number of places Variable

Fees and financial advice

See Funding your studies on page 90

How to apply

See Admissions process on page 94

Contact details

Professor David Denney
Director of Centre for Criminology and Sociology
T: +44 (0)1784 443683
F: +44 (0)1784 276541
d.denney@rhul.ac.uk



‘World-leading and internationally excellent research was found in performance, history and historiography, and in post-colonial theatre and (non-English language) performance and applied theatre’.

RAE Report, 2008

The Department of Drama and Theatre’s outstanding staff of world-leading researchers provides a lively environment for postgraduate students. As one of the largest theatre departments in Europe, all our postgraduate students contribute to our vibrant research culture.

The Research Assessment Exercise for 2008 shows that the overwhelming majority of our research activities are world-leading (4*) or internationally excellent (3*). We offer an unrivalled quality and range in our research and teaching activities.

Profile

Many academics have professional experience as theatre-makers, and their research is informed by their practice as directors, writers, performers, and choreographers.

Research facilities for study in theatre and performance are supported by excellent holdings in the library and archival collections. This is complemented by easy access to central London libraries and specialist theatre archives. Practice-based research is enabled by the variety of performance spaces and a fully equipped digital studio. Studies in the practice of theatre are accommodated in our Studio Theatre. Work is underway to replace the Studio Theatre with a newly designed flexible theatre space and additional rehearsal rooms. We also have one of the only stages for Japanese Noh in Europe and a large ‘found space’ - the Boilerhouse.

Opportunities for Postgraduate Study

Royal Holloway offers a varied programme of taught courses at postgraduate level, including diplomas and MA degrees. MPhil and PhD supervision is offered in many different fields of theatre and performance, including practice-based PhDs examined by thesis and advanced performance work.

Taught programmes

MA in Theatre

Main campus; FT/PT; 12/24 months

This programme enables students to enhance their expertise in a specialist practical pathway while undertaking advanced research. All students complete an independently-researched dissertation, which allows them to develop specific areas of interest.

Students pursue one of three specialist pathways named below. These programmes are open to students with an Upper Second Class Honours (2:1) in a relevant undergraduate degree.

MA in Theatre (Applied Drama)

This pathway explores the innovative ways in which drama and theatre is applied to educational, therapeutic and community settings. Applied drama/ theatre is an umbrella term which includes the practice of drama in a wide range of settings, such as drama and theatre in education; young people’s theatre; drama, health and healing; reminiscence and heritage theatres; theatre in prisons; theatre for development and community theatre. The course encourages students to examine critically central debates in this dynamic aspect of theatre practice.

MA in Theatre (Directing)

This course offers students the opportunity to explore theories and practices of contemporary directing. The course is taught primarily through intensive practical workshops that involve discussion, focused readings and viewings, the testing of various methods and approaches, and the presentation of short directed scenes. In addition, students direct their own productions, and write a dissertation on a topic related to their core interests. The course is aimed at those students interested in pursuing careers in theatre making, teaching and/or subsequent postgraduate research and practice.

MA in Theatre (Physical Theatre & Performance)

On this innovative course you will explore ways of training the performer’s body and voice within Western traditions of non-naturalistic theatre and the principles, theories and philosophies that underlie such traditions. In the final stages of the course, students are given the opportunity to bring their insights and learned skills together through the creation of a short performance or equivalent project. The course therefore is suited to developing practitioners who wish to both extend their practical skills within this field and who enjoy combining experiential and text based research and writing.

MA Playwriting; FT/PT; 12/24 months

This is a specialist programme designed for aspiring playwrights and dramaturges but would also benefit anyone who wants to gain hands-on understanding of how to write for the stage. The course introduces students to basic craft skills of play construction, character, dialogue, subtext, scene structure, and style but also encourages students to create performance text for alternative theatre forms. You will produce a portfolio of performance writing, including a finished full-length play. The class is normally taught in the College’s London base in Bedford Square.

Postgraduate Certificate in Physical Theatre for Dancers and Actors; PT; 9 months

This part-time programme enables students to develop expertise in physical theatre through working with professional performers (this year from the Jasmin Vardimon Company) within the university context. Students participate

“The MA in Theatre programme embraces students from a diverse range of backgrounds, allowing for a fascinating forum of constructive feedback in workshops and seminars. I chose this MA to further study the field of theatre directing and, through encouragement and exploration with my peers and tutors, I have begun to find out who I am as a theatre artist.”

**Jonathan Anthony Woodhouse,
MA in Theatre (Directing)**

in practical projects; and produce solo and group performances with an emphasis on integrating dance and theatre. This is a continuing professional development course.

MA in Research FT/PT; 12/24 months

This programme prepares students for advanced research, and is ideal for students wanting to prepare for PhD study. The course offers a very thorough and targeted training, with tutorial teaching and individual supervision for the main component, the dissertation. Many students come to the course direct from undergraduate study, though the student body also often includes mature students wanting to return to study before embarking on a PhD. For the dissertation, students often research subject areas that will complement their later PhD study, and test out ideas they will later develop in more detail.

MPhil and PhD programmes

Our department is home to around 70 PhD students who lead symposia and seminars and present their work at national and international conferences while pursuing their own research.

The ‘Ways of Working’ programme enables new research students to participate in subject-specific workshops led by visiting experts. Research students also engage in the latest debates in the discipline by attending the Department’s research groups and training is offered in presenting research to the academic community and beyond.

PLATFORM is the leading online journal for postgraduate researchers that was created and is edited by PhD students in the Department. Students work closely with a team of international academics and gain valuable insight into the world of academic publishing. The journal can be viewed at: www.rhul.ac.uk/dramaandtheatre/platform/home.

Applying for MPhil/PhD study

Each MPhil/ PhD student will work with a supervisory team who have expertise in their area of study. Applicants should have, or expect to be awarded, a Masters degree in a relevant field, or have the equivalent postgraduate experience.

Suitably qualified students wishing to pursue doctoral research are invited to learn about and contact academic staff members, with whom they are interested in discussing a potential research project, through our website. If you already know the name of an academic staff member with whom you are interested in working, you are welcome to email them to discuss potential research projects, or contact the Director of Graduate Studies, Professor David Wiles.

In recognition of the excellent supervision offered by the department, we have been allocated a significant number of AHRC MPhil/PhD scholarships over five years under the block grant scheme. We also offer a small number of College fee waivers and studentships.

At a Glance

Programmes

MA in Research
MA Playwriting
MA in Theatre (Applied Drama)
MA in Theatre (Directing)
MA in Theatre (Physical Theatre & Performance)
PG Certificate in Physical Theatre for Dancers and Actors

Number of places Variable

Fees and financial advice

See Funding your studies on page 90

How to apply

See Admissions process on page 94

Contact details

Professor Dan Rebellato
Head of Department (from Jan 2012)
dan.rebellato@rhul.ac.uk

Professor David Wiles
Director of Graduate Studies
MPhil/PhD admissions and enquiries
david.wiles@rhul.ac.uk

Dr Chris Megson, Director of MA Programmes
chris.megson@rhul.ac.uk

Dr Libby Worth, MA Coordinator
libby.worth@rhul.ac.uk

T: +44 (0)1784 443922
F: +44 (0)1784 431018

For details see our website:

www.rhul.ac.uk/studyhere/postgraduate/

Career prospects

Our graduates have an excellent record of employment, and the training programme we offer has helped them to achieve their ambition. Students have recently entered into many interesting careers, including Assistant Director at the BBC, Script Editor at Scottish Media Group, and lecturing posts at the universities of Manchester, Portsmouth and California.

The Department of Earth Sciences was ranked seventh in the UK for the proportion of world-leading or internationally excellent research in the 2008 Research Assessment Exercise. We are consistently ranked a top Earth Sciences department in university league tables.

Profile

Our research activities fall into three broad areas encompassing the understanding of the Earth. These represent a general framework to encourage and promote the multidisciplinary activity fundamental to modern science, while allowing great flexibility to research groups and individuals. Global Environmental Change researchers focus on issues of global change such as methane as a greenhouse gas, Arctic change, snow chemistry, modern and ancient sedimentary processes, Phanerozoic environmental change and associated biotic responses, the biogeochemistry of Archaeal ecosystems, human migrations and the evolution of life through geologic time. Geochemical Earth Systems research uses world class techniques and facilities in radiogenic (Sr-Nd-Pb-Hf-U-Th) and stable (C, H, O, S) isotopes to examine the nature and rate of processes in the atmosphere, hydrosphere, crust and mantle, as well as the early history of the Earth and solar nebula. Geodynamics and Basin Systems integrate structural geology, geophysics, sedimentology and modelling to tackle key problems in the evolution of rift systems and passive margins, tectonics of mountain belts, landscape evolution and Pasic neotectonics.

Our MSc and PhD teaching and research activities help maintain vital links with industrial and commercial partners, thus providing research support and employment for our graduates.

Taught programmes

We are within the highest-rated departments in the country for student satisfaction (National Student Satisfaction survey). Petroleum Geoscience and Environmental Diagnosis and Management courses have a very high reputation in industry for premier training.

MSc Petroleum Geoscience (Basin Evolution) Main campus; FT/PT; 12/24 months

This course looks at all aspects of petroleum geology related to hydrocarbon exploration and production. Oil Company funded studentships are available.

MSc Petroleum Geoscience (Tectonics) Main campus; FT/PT; 12/24 months

This course emphasizes the aspects of structural geology related to petroleum exploration and production. We emphasise development of analytical skills based on fieldwork, analogue modelling, and geophysical data.

MSc Environmental Diagnosis & Management Main campus; FT/PT; 12/24 months

This course provides valuable scientific understanding and practical experience of legislative, technological and quality aspects of the diagnosis (analysis and assessment) and management (remediation and restoration) of important environmental issues concerned with contaminated land, water quality, air pollution and waste.

Graduates are trained professional environmental scientists with excellent prospects for successful and rewarding careers as environmental consultants and engineers, or within local and regulatory authorities, industry, research institutes and academia.

Graduate Diploma in Geology Main campus; FT; 12 months

This course provides training for graduate students who wish to study for Masters or Postgraduate Research degrees in Geology, but whose first degree qualifications provide insufficient background for admission to these programmes.

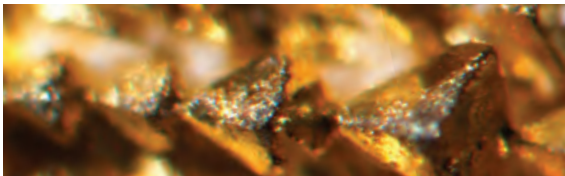
For more information on our programmes, please visit our website.

Research opportunities

Applications are invited for postgraduate research places leading to either the MSc by Research (one year), MPhil (two year), or PhD (three year) degree. We offer a wide range of projects falling within the general remit of our three main research themes. Applicants should have, or expect to be awarded, the equivalent of an Upper Second Class Honours (2:1) degree in a related subject, and/or work experience. Research projects may be fully supported by industry funding, research councils, College scholarships or self-funded.

All staff can accept suitably qualified research candidates who qualify for scholarships or who have alternative means of support.

We recommend you directly contact compatible staff members regarding possible collaboration and sponsorship, preferably via email. For more information, please visit our website.



"I was attracted to Royal Holloway because of its reputation for excellence and it boasted a diversity that most other universities lacked. The opportunity to learn from some of the best people in the field has been immensely rewarding, and being able to present my work at international conferences has helped build my confidence."

Mfon Udofia, PhD in Geology

- Global Environmental Change (Staff: Clemitshaw, Collinson, Falcon-Lang, King, Lowry, Müller, Nisbet, Scott, Smith) Biogeochemical cycling, Greenhouse gases, Archeological geoscience, Ecosystems, Palynology, Tertiary floras, Fire history
- Chemical Earth Systems (Staff: Alderton, Lowry, Matthey, Menzies, Müller, Thirlwall, Tomlinson) Stable isotopes, Magmatic processes, Palaeo-climates, Igneous petrogenesis, Lithosphere evolution, Geochronology, Thermochronology
- Geodynamics and Basins Systems (Staff: Adam, Bosence, Eagles, Elders, Fowler, Gudmundsson, Hall, Le Heron, McClay, Nichols, Pérez-Gussinyé, Waltham) Geodynamics of Rifts and Passive Margins, Orogenic Systems, Fault Fold and Fracture Dynamics, Numerical Modelling of Depositional and Tectonic Processes, Plate Tectonic Evolution, Seismology, Sedimentology

For more information, please visit our website.

Research facilities and partners

Research facilities include atmospheric monitoring and isotope laboratory, thermal ionization mass spectrometer laboratory, IsoProbe-multi-collector, laser ablation ICP-MS laboratory, stable isotope laboratories, ICP-AES facility, X-ray fluorescence, two analogue modelling laboratories, as well as industry-standard seismic and potential field processing, software and a 3D Visualisation Facility. Research partners include UK and international universities, organisations and industries.

Career prospects

Our MSc and PhD graduates are very employable; of the petroleum MSc graduates 75 percent remain in the sector over 15 years – 73 percent in industry and 20 percent in research; of the environmental MSc graduates 86 percent have remained in the sector, 78 percent in environmental jobs. Over recent years, 24 percent of PhD graduates entered academia and 43 percent industry.

At a Glance

Programmes

MSc Petroleum Geoscience (Basin Evolution)

MSc Petroleum Geoscience (Tectonics)

MSc Environmental Diagnosis & Management

MSc Geology by Research

Graduate Diploma in Geology

MPhil/PhD

Number of places

Taught programmes: 60

Research: 50

Fees and financial advice

See Funding your studies on page 90

How to apply

See Admissions process on page 94

Contact details

For MSc Enquiries, please contact the Postgraduate Programmes Co-ordinator:

Ms Kathryn Hardy
Postgraduate Programmes Coordinator
T: +44 (0)1784 443581
F: +44 (0)1784 471780
info@es.rhul.ac.uk

Professor Margaret Collinson
Director of Graduate Studies
T: +44 (0)1784 443607
F: +44 (0)1784 471780
m.collinson@es.rhul.ac.uk

Dr David Waltham
Head of Department
T: +44 (0)1784 443617
F: +44 (0)1784 471780
d.waltham@es.rhul.ac.uk

Economics

Faculty of Management & Economics

www.rhul.ac.uk/Economics/

The Department of Economics at Royal Holloway is unique in being a young department in an established and prestigious College of the University of London.

Since 1995, we have quickly developed a strong reputation as a centre of economic research and teaching.

Profile

We have recruited academic staff from the leading research departments around the world. The Department has in excess of 20 academic staff. Unlike other international-level research departments in the UK, we have decided to run a small and select postgraduate programme. We aim to admit about 30 well-qualified students. We also admit several MPhil and PhD research students each year. The relatively compact size of the programme ensures that postgraduate students can receive considerable individual attention from members of staff. In the 2008 Research Assessment Exercise (RAE) the Department came joint ninth in the country in terms of producing the highest quality research. Eighty percent of its research submitted in the RAE is ranked world-leading or internationally excellent (rated 3* and 4*).

Taught programmes

MSc Economics

Main campus; FT; 12 months

The MSc in Economics is a traditional programme providing a firm background in advanced economic theory and econometric analysis.

MSc Financial & Industrial Economics

Main campus; FT; 12 months

The MSc in Financial & Industrial Economics provides students seeking careers in management or in the financial sector with a solid technical background in finance, economic analysis, quantitative methods and research methods.

MSc in the Economics of Public Policy

Main campus; FT; 12 months

The MSc in the Economics of Public Policy provides rigorous training for students seeking a career in public policy analysis either in the public sector, in international organizations, or consultancies.

Students on all three MSc programmes start with a compulsory pre-session Mathematics refresher course. Students then take three core courses in Microeconomics, Macroeconomics, and Econometrics as well as a course in Research Methods, which provides generic tools that will be applied when writing the dissertation. Students then choose three half-units of the optional courses from a menu of

courses which include Advanced Macroeconomics, Financial Economics, Industrial Economics, Public Economics, and Evaluation Economics.

All three Masters programmes offer an excellent preparation for further academic studies, for careers in the public and private sectors, and in the financial services sector.

Diploma in Economics

Main campus; FT; 9 months

The Diploma is designed for students with a degree in a subject other than Economics who seek to learn more about the subject and qualify for further studies at the MSc level.

Students take three core courses in Microeconomics, Macroeconomics, and Quantitative Methods. In addition students also choose one unit from a set of available optional choices. Available options vary from year to year but include Financial Economics and Industrial Economics.

Diploma in Financial Economics

Main campus; FT; 9 months

The Diploma in Financial Economics is similar to the Diploma in Economics, but with a focus on financial markets. In addition to the core courses, students take a course in Financial Economics.

Successful completion of either Diploma programme at an average of 60 percent qualifies for entry to a Masters degree.

Research opportunities

Applications are invited for postgraduate research places leading to the PhD degree. Applicants should have, or expect to be awarded, a good MSc level degree in Economics. There are a number of studentships and Teaching Fellowships available every year.

All academic staff can supervise suitably qualified PhD students. If you already know the name of an academic staff member that you are interested in working with, you are welcome to email them to discuss potential projects. Staff details are given on our website.

Research interests

The primary emphasis of the Department's research concerns the application of high-level economic and econometric analysis to practical problems in policy-making and in the financial and business sectors of the economy. There are a number of research groupings in the Department: economic theory; financial and industrial economics; labour economics; experimental economics; public economics; economic history and political economy. We welcome applications from qualified research students in these and other areas.



"The Economics Department is friendly and supportive. The Masters course itself was rigorous; I really was impressed by how much I learnt about Economics at an advanced level. Not only was the course well planned but I also found excellent teachers."

Alejandra Manquilef, MSc Economics

Research facilities

The Department is well equipped with computers and library resources. The Department also has a laboratory for experimental research.

Career prospects

In recent years graduates have entered into many interesting careers, including working for central banks, international organisations, the UK Treasury and as management consultants and market analysts for established international firms. Recent graduates from the PhD programme have started academic careers at prestigious universities such as Columbia University, UCLA, University of Melbourne and University of Exeter.



At a Glance

Programmes

MSc/Diploma in Economics
MSc Financial & Industrial Economics
MSc in the Economics of Public Policy
Diploma in Financial Economics
MPhil/PhD Economics

Number of places

30–35

Fees and financial advice

See Funding your studies on page 90

How to apply

See Admissions process on page 94

Contact details

Professor Jeff Frank
PhD Yale University
Head of Department
T: +44 (0)1784 443676
pgecon@rhul.ac.uk

Diane Lavender
Postgraduate Administrator
T: +44 (0)1784 443381
F: +44 (0)1784 439534
pgecon@rhul.ac.uk

Professor Dan Anderberg
PhD Lund University
Director of Graduate Studies
T: +44 (0)1784 414082
pgecon@rhul.ac.uk

The Department has won a reputation as one of the most dynamic departments of English in the country. We offer expertise across the full chronological and specialist range of English literary study.

Profile

All staff in the Department are highly regarded scholars, writers and critics and the quality of our research was recognised in the most recent Research Assessment Exercise where 90 percent of our research was found to be of international quality.

The Department hopes to offer two AHRC awards under the BGP scheme and also one MA award: a Creative Writing Professional Preparation Masters Studentship. Applicants for postgraduate study should apply separately for the AHRC scholarship but are automatically considered for other funding for which they are eligible.

Taught programmes

MA Creative Writing

Central London; FT/PT; 12/24 months

The programme encourages students to develop and reflect on their work as writers in the context of contemporary and well-established literatures. It is designed for students who are seriously dedicated to their writing and want to see it in print. Applications from poets and novelists will be considered.

MA Life Writing

Central London; FT/PT; 12/24 months

The MA in Life Writing at Royal Holloway encourages the study of biography as an academic and creative discipline, and aims to supply students with the research skills and tools of critical and creative appreciation requisite to developing careers as life writers.

MA English Literature

Main campus; FT/PT; 12/24 months

This programme allows you to combine a core course from Medieval Studies, Shakespeare, Victorian Literature, Art & Culture, or Literatures of Modernity, with further options from all the MAs (excluding Creative Writing and Poetic Practice). A Diploma may be awarded upon satisfactory completion of the taught element of the programme.

MA Literatures of Modernity: Modernism, Postmodernism, Postcolonialism

Main campus; FT/PT; 12/24 months

This programme explores the rich range of literary and cultural writings of the 20th century, from the perspective of the leading theoretical, historical and formal frameworks which have been used to understand the concepts of modernity and postcolonialism.

MA Medieval Studies

Main campus; FT/PT; 12/24 months

This multidisciplinary MA aims to introduce students to many different aspects of medieval society and culture while allowing them to concentrate on particular areas of interest. It makes full use of the historical and scholarly environment of London.

MA Poetic Practice

Central London; FT/PT; 12/24 months

The programme aims to enable students to develop (and reflect on) their own poetic practice in the context of an understanding of contemporary experimental practice in poetry from the UK and North America, and in relation to new technologies of writing.

MA Shakespeare

Main campus; FT/PT; 12/24 months

The principal aim of the programme is to study the full range of Shakespeare's dramatic and poetic works more closely and comprehensively than is possible at undergraduate level. The hallmark of the programme is its detailed engagement with the works themselves.

MA Victorian Literature, Art, & Culture

Main campus; FT/PT; 12/24 months

This cross-disciplinary MA offers a programme in Victorian Studies which draws on the College's expertise in History, Art History and English. The foundation course provides an advanced grounding in current debates and approaches in the interdisciplinary field of Victorian Studies.

Research opportunities

Applications are invited for postgraduate research places leading to the PhD degree. Applicants should have, or expect to be awarded, a good Masters level degree in English. All staff can supervise suitably qualified PhD students who qualify for studentships or who have alternative means of support. If you already know the name of an academic staff member with whom you would like to work, please email him/her to discuss potential projects. Staff details are given on our website.

Research interests

Research supervision is provided in all the main areas of literary study, from Anglo-Saxon and Middle English poetry to postmodern literature and critical theory. The Department's major strengths are in the Renaissance, the 19th century and the 20th century, with particular specialisms in Shakespeare, Swift, Cibber, Sterne, Dickens, Browning, Hardy, Conrad, Wilde, Joyce, Beckett, the fin



“The MA in Creative Writing aims to stretch imaginations, encourage the development of technical skills, sharpen the focus of self-criticism, and deepen individual writing practice.”

**Professor Andrew Motion,
Programme Director MA Creative Writing**

de siècle, and contemporary critical theory. There are also thriving research interests in 18th-century literature, American literature, modernism, postmodernism and contemporary poetic theory and practice. Practice-based PhDs in various genres of creative writing and poetic practice are also available.

Research facilities

The Department is housed in the award-winning International Building, which boasts excellent teaching rooms as well as the latest IT and AV facilities. Members of our large postgraduate community enjoy access to the British Library, the University of London Library, and the many specialist libraries located in central London. The Institute of English Studies at Senate House also has a venue for conferences, research seminars and lectures by the world's leading English scholars. In addition, Royal Holloway has its own library (the largest of the University of London colleges), including a substantial collection of material spanning the full range of English studies at Royal Holloway, a Humanities and Arts Research Centre, a Picture Gallery with a magnificent collection of Victorian art and a Centre for Victorian Studies. The College provides all the on-campus facilities postgraduates need to access the burgeoning resources for research on the internet. All English postgraduates have access to PCs and email, the Postgraduate Study Room and the College Library. Students are given training in research methods and information retrieval.

Career prospects

The Department has an impressive record for placing postdoctoral graduates in academic jobs and in prominent positions outside the academy including internships in institutions such as the British Library. In the field of Shakespeare and Renaissance studies alone, our postgraduates have recently secured positions at the universities of Edinburgh, Sussex and Leeds, Shakespeare's Globe and the National University of Ireland. Recent postgraduates in American literature, modern and contemporary literatures and theory have secured prestigious appointments in London. The English Department also prepares postgraduates for successful careers in a variety of other areas, such as teaching, education, writing and journalism, administration and marketing.

At a Glance

Programmes

MA Creative Writing
MA English Literature
MA Life Writing
MA Literatures of Modernity: Modernism, Postmodernism, Postcolonialism
MA Medieval Studies
MA Poetic Practice
MA Shakespeare
MA Victorian Media & Culture
MPhil/PhD

Number of places

20 on each MA
No limit for MPhil/PhD

Fees and financial advice

See Funding your studies on page 90

How to apply

See Admissions process on page 94

Contact details

Dr Anne Varty
Head of Department
T: +44 (0)1784 443217
F: +44 (0)1784 276246
a.varty@rhul.ac.uk

Professor Judith Hawley
Director of Graduate Studies (Research)
T: +44 (0)1784 443225
F: +44 (0)1784 276246
j.hawley@rhul.ac.uk

Dr Betty Jay
Director of Graduate Studies (Taught)
T: +44 (0)1784 443212
F: +44 (0)1784 276246
b.jay@rhul.ac.uk

Gaenor Burchett-Vass
Postgraduate Administrator
T: +44 (0)1784 443215
F: +44 (0)1784 276246
gaenor.burchett-vass@rhul.ac.uk

Geography at Royal Holloway is a world-leading Department, rated among the top tier of Departments in the 2008 Research Assessment Exercise and 'excellent' for its postgraduate teaching. Our research environment has been singled out as overwhelmingly 'world class' and 'internationally excellent' and reflects our commitment to facilitate research of the highest quality.

Profile

There is a vibrant postgraduate community of over 130 students, drawn from across the world. We have over 30 members of academic staff, with notable research concentrations in Quaternary science, environmental archaeology, social and cultural geography, development studies, geopolitics and sustainability.

Taught programmes

MA Cultural Geography (Research) Main campus; FT/PT; 12/24 months

This programme explores the central themes of cultural geography, especially the relationships between place, identity, nature and culture. ESRC 1+3 studentships available.

MSc/Diploma in Practising Sustainable Development (including a separate ICT4D specialism option) Main Campus; FT/PT; 12/24 Months

This MSc addresses practices and policies of sustainable development, helping to ensure that development serves the long term interests of poor people and communities. Students taking the MSc with ITC4D specialism enjoy the breadth of teaching in the existing PSD programme but in four separate modules and in their dissertations they get an opportunity to focus on the specialist field of information and communication technologies for development. ESRC 1+3 studentships available.

MSc/Diploma in Geopolitics and Security (new for 2012 subject to validation and taught with the Department of Politics and International Relations) Main Campus, FT/PT; 12/24 Months

This MSc focuses on the intersection between geopolitics and security with optional courses available from both departments. ESRC 1+3 studentships available.

MSc Quaternary Science Main campus; FT/PT; 12/24 months

This MSc provides specialist training in the scientific study of past environmental change, including laboratory and field techniques. The programme is offered jointly with UCL: until 2012-13.

MSc Sustainability & Management (taught with the School of Management) Main campus; FT; 12 months

This programme provides an advanced-level introduction

to principles of environmental sustainability and corporate social responsibility. ESRC recognised.

Research opportunities and funding

We welcome applications for PhD research across the full range of our research interests. Applicants should have, or expect to be awarded, an Upper Second Class Honours (2:1) degree or above, and should normally have completed a Masters in an appropriate discipline. We have an excellent record in securing postgraduate funding from ESRC, AHRC and NERC. Overseas applicants are eligible for a wide range of awards. Please contact the Department as early as possible if you are likely to be seeking funding. Further information can be found on our website.

Research interests

- **Dr Peter Adey** Geopolitics, Security, Mobility and Affect, Air-Travel/Power, Borders and Emergencies
- **Dr Simon Armitage** Climate change, palaeohydrology, geoarchaeology, luminescence dating
- **Dr Simon Blockley** Tephrochronology and geochronology, paleolithic archaeology, geostatistics
- **Dr Katherine Brickell** Gender, youth and development, Cambodia, Vietnam and Laos.
- **Dr Ian Candy** Geomorphology, sedimentology, climate change, Mediterranean landscape history
- **Professor Phil Crang** Cultural geography, diaspora and migration, material cultures
- **Professor Tim Cresswell** Mobility, place, landscape and identity, geographical imaginations
- **Dr Mary Dengler** Environmental governance, sustainability, water management policy
- **Dr Vandana Desai** NGOs and civil society, survival strategies of the poor, community participation, India
- **Dr Mustafa Dikeç** French urban policy, social justice, immigration and politics
- **Professor Klaus Dodds** Geopolitics and international relations, Antarctica, Britain and the Arctic
- **Professor Felix Driver** Travel, exploration and empire, collections, geography and the visual image
- **Professor Scott Elias** Palaeoentomology, environmental history, climate change, Arctic science
- **Dr Peter French** Coastal and estuarine management, coastal defence impacts, public perception of risk
- **Professor David Gilbert** 20th-century London, empire, modernity, tourism and fashion
- **Dr Harriet Hawkins** Geographies of art, creativity and geographical thought and methods, creative industries
- **Dr Dorothea Kleine** Globalisation, ICT and development, ethical trade
- **Dr Innes Keighren** Book history, historical geographies of science, geographic thought
- **Dr Alex Loftus** Urban sustainability, politics of water, urban interventions



“Supervision of my studies has been excellent and the academic staff are continually enthusiastic, friendly and approachable. The large international departmental postgraduate community means there is always the opportunity to share ideas.”

Steve Bell, PhD in Geography

- **Professor John Lowe** Quaternary science, climate change, palynology, tephrochronology
- **Dr Ian Matthews** Quaternary science, climate change, tephrochronology, geoarchaeology
- **Dr Xingmin Meng** Geographic Information Systems and related applications
- **Dr Jay Mistry** Ecology and management of world savannas, sustainability in practice
- **Dr Alasdair Pinkerton** Geopolitics, media, communications, public diplomacy
- **Professor Danielle Schreve** Quaternary mammals, biostratigraphy, ancient human occupation of Britain
- **Dr Thomas Stevens** Quaternary science, loess and environmental change, luminescence dating
- **Professor David Simon** Development studies, urbanism, global environmental change, Africa
- **Dr Varyl Thorndycraft** Fluvial geomorphology, palaeohydrology, geoarchaeology
- **Professor Tim Unwin** ICT for development, participatory research, ethics, rural change
- **Professor Katie Willis** Transnational migration, development studies, health sector reform, Mexico

Research facilities, partners and training

Postgraduates are an integral part of our research community and social life. There are a wide variety of seminars, workshops and informal events including an annual postgraduate symposium. Postgraduates have access to excellent research facilities which include a suite of well-equipped laboratories (including a Qualitative Methods laboratory and state-of-the-art geochronology facilities), computing resources and libraries. Postgraduates also have the benefit of world-class research facilities in London.

The Department has research links and collaborative studentship projects with a wide range of organisations including the Natural History Museum, the Royal Geographical Society (with IBG), the British Museum, the Science Museum, Practical Action, the Commonwealth Telecommunications Organisation, Museum of London, Victoria and Albert Museum, Royal United Services Institute, the British Geological Survey, English Nature, the National Maritime Museum, Street Child Africa, Cisco Systems, and the Centre for the Development of People, Kumasi, Ghana. The Department offers a comprehensive programme of research training for all postgraduates; full details are available on our website.

Career prospects

In recent years graduates have entered into a wide range of careers, including university research and lectureships; environmental archaeology; civil service; consultancy; Department for International Development; WaterAid; and the RGS-IBG.

At a Glance

Programmes

- MA Cultural Geography (Research)
- MSc/Diploma in Practising Sustainable Development (ICT4D specialism)
- MSc/Diploma in Geopolitics and Security * (taught with the Department of Politics & International Relations)
- MSc Quaternary Science
- MSc Sustainability & Management (taught with the School of Management)
- Full-time and part-time MPhil and PhD programmes in all aspects of Human and Physical Geography
- * subject to validation

Number of places No fixed number

Fees and financial advice

See Funding your studies on page 90

How to apply

See Admissions process on page 94

Contact details

Professor Klaus Dodds
 Director of Graduate Studies
 T: +44 (0)1784 443580
 F: +44 (0)1784 276647
 k.dodds@rhul.ac.uk

Professor David Gilbert
 Head of Department
 T: +44 (0)1784 443653
 F: +44 (0)1784 472836
 D.Gilbert@rhul.ac.uk

Liz Hamilton and Karen Oliver
 Postgraduate Administrators
 T: +44 (0)1784 443563
 F: +44 (0)1784 472836
 GeogPGadmin@rhul.ac.uk

History

Faculty of Arts & Social Sciences

www.rhul.ac.uk/History/

The History Department is a strong, vigorous Department at the forefront of research and methodological innovation. Our stimulating programme of taught and research degrees inspire and challenge; you will join a community in which internationally renowned academics are developing the very latest thinking.

Profile

We are one of the largest and liveliest History Departments in the United Kingdom yet our size is not at the cost of anonymity; we are committed to giving close individual attention to all members of our postgraduate community. There are currently nearly 40 full-time academic staff (many of whom are recent appointments), several research fellows, and around 180 postgraduate students.

We have a strong research tradition and the international quality of our research was recognised in the latest Research Assessment Exercise. We have also been rated 'excellent' (the highest award) for our teaching.

Many of our postgraduate research students have gone on to win Fellowships at the Institute of Historical Research, or Postdoctoral awards from the Arts and Humanities Research Council. A high proportion of those who completed their doctoral degrees in the Department in the last decade now hold academic, or academic-related, posts in universities in Britain and abroad.

Taught programmes

MA History

Main campus/central London; FT/PT; 12/24 months

This programme has been specially devised to provide a thorough training in the study of history across a wide range of periods and themes. The available option courses reflect this variety and cover the following areas: gender and cultural history, modern British history, modern European history, Hellenic studies and World history. From September 2009 a new MA in Public History also came on stream (further information below). All students take a wide-ranging methodology course and a research skills training course which provides instruction in the use of archives, electronic search aids and bibliographies, help with transferable skills such as chairing and working in groups and briefings on the applications of history in the job market.

Options offered for the MA in History can also be taken as part of the following specialised programmes:

MA in Public History

Main campus/central London; FT/PT; 12/24 months

The MA offers an opportunity to work alongside practitioners in the field – museum curators, public archivists, publishers and television and radio producers – while equipping students with practical skills of historical interpretation and communication. The MA is a unique gateway to the heritage sector and popular media. In addition to the core methodology course and research skills course, bespoke courses include 'The Public Communication and Understanding of History' and 'Pathways to the Past'. All students also write a research-based Project Dissertation.

MA Late Antique & Byzantine Studies

Central London/main campus; FT/PT; 12/24 months
(see page 58)

MA Crusader Studies

Central London/main campus; FT/PT; 12/24 months

The London MA in Crusader Studies is designed for students who want to pursue an advanced interest in crusading history and/or are preparing to take a PhD in this discipline. The programme offers students an understanding of the context of the crusades, and the ideology that underpinned the movement as well as a consideration of its modern day resonances.

MA Medieval Studies

Central London/main campus; FT/PT; 12/24 months

Taught in collaboration with the English Department, the School of Modern Languages, Literatures and Cultures, and the Museum of London, this wide-ranging multi-disciplinary programme encourages students to explore many different aspects of the Middle Ages – historical, literary, and archaeological. All the courses emphasise the skills that research students need and provide an introduction to source material of all kinds, both printed and manuscript. Teaching takes place at the campus in Egham and at our central London base, Bedford Square.

Research opportunities

All members of the Department are active in research and accept MPhil/PhD students whose projects match their areas of expertise; details are given on our website. Once you know the name of the member of staff with whom you are interested in working, feel free to email him or her to discuss your plans. For additional advice contact the Director of Graduate Studies.

“Our MA programmes mesh theory with front-line research to produce marvellous results. We recruit an international mix of students who all come to share their own approaches to the study of the past (which extends, of course, right up to the present moment) and to learn by debate and discussion with others.”

**Professor Helen Graham,
Programme Director, MA History**



Research interests

There is a vast range of research expertise in the Department. Our particular strengths are in social, cultural, and gender history, the history of ideas, and research that covers a notable range of countries, periods, and approaches. Staff actively seek out unifying themes which cut across boundaries of time and place, including gender, urban history, historical memory, material culture, literary history, religion, the history of medicine, nationalism, migration and diaspora. For further information, please visit our website.

Research facilities

Students at Royal Holloway have access to some of the richest facilities for historical research anywhere in the world. In addition to the substantial library collections on campus, there are those of the National Archives, the British Library, and the libraries of the University of London (including Senate House, the Institute of Historical Research, the Institute of Classical Studies and the Warburg Institute). Students can also use the College Archives, a unique resource which contains some of the earliest records relating to the history of higher education for women.

Career prospects

In recent years, making excellent use of the skills provided by a training in History, our graduates have embarked on a range of interesting and rewarding careers, including academic posts, the diplomatic service, the legal profession, management-level banking, management-level business, the civil service and local government, the heritage industry (eg the National Trust; the National Maritime Museum, Greenwich), and teaching at school and FE level.

At a Glance

Programmes

MA History (including MA in Public History)
MA Crusader Studies
MA Late Antique & Byzantine Studies
(see page 58)
MA Medieval Studies

Number of places 80

Fees and financial advice

See Funding your studies on page 90

How to apply

See Admissions process on page 94

Contact details

Professor Helen Graham
Director of Graduate Studies
(taught programmes)
F: +44 (0)1784 433032
h.graham@rhul.ac.uk

Dr Sarah Ansari
Head of Department
T: +44 (0)1784 443301
F: +44 (0)1784 433032
s.ansari@rhul.ac.uk

Marie-Christine Ockenden
Postgraduate Administrator
T: +44 (0)1784 443311
F: +44 (0)1784 433032
m.ockenden@rhul.ac.uk

Profile

The Hellenic Institute, established in 1993, brings together two areas of teaching and research in which Royal Holloway has long excelled: the study of the language, literature and history of Ancient Greece, based largely in the Department of Classics & Philosophy, and Byzantine Studies, which have always found a home in the Department of History. It aims to consolidate existing strengths and to extend them by promoting the study of the Hellenic tradition across the centuries, from archaic and classical Greece, through the Byzantine period, to the modern world. The Institute also organises lectures, seminars, conferences and events for students, scholars and the wider public. It receives funding from the Ministries of Culture and Education of the Hellenic Republic, the Ministry of Education and Culture of the Republic of Cyprus, the A.G. Leventis Foundation, the Hellenic Foundation, the Orthodox Cultural Association (Athens), The Friends of the Hellenic Institute, and private donors.

Research interests

The main research interests of staff attached to the Institute are Greek history, literature and philosophy, through to the Roman Empire including Homer, cultural and intellectual history, 4th and 5th-century political history, Greek law, oratory, Greek women, Greek tragedy, the novel, Greek literature under the Roman Empire, performance culture, reception studies, epigraphy, Platonism and Neoplatonism; art and architecture including Classical and especially Dorian architecture; Byzantine literature and history especially of the later period 1204–1453, Byzantium and the West, particularly the Crusades and the Italian Renaissance, and Greek palaeography; Greek medicine and its later influence; and the post-Byzantine world. The Institute hosts a number of research projects including the Greek Community in London, Lexica of Greek Palaeography, Byzantine Autographs, and a catalogue of the Greek Manuscripts of Lambeth Palace Library. Its core seminar on editing Byzantine texts gives students the opportunity to contribute to editing, translating and annotating a text from the manuscript.

Programmes

MA History: Hellenic Studies

Central London/main campus; FT/PT; 12/24 months

This MA aims to give students from various backgrounds the opportunity to have an overall view and appreciation of Greek history and culture from the Homeric and Classical age, through the Hellenistic and Roman times, the Byzantine and Post-Byzantine period to the modern world. Its diachronic and interdisciplinary nature enables students to examine the elements which characterise Hellenic culture through the centuries, at the same time acquiring a deeper

At a Glance

Programmes

MA History: Hellenic Studies
MA Classics (see page 40)
MA Ancient History (see page 40)
MA Late Antique & Byzantine Studies
MPhil/PhD

Number of places 30

Fees and financial advice

The Hellenic Institute offers a number of annual studentships, bursaries and awards.

For more information, please visit:

www.rhul.ac.uk/hellenic-institute/studying/grants.html

See also Funding your studies on page 90

How to apply

See Admissions process on page 94

Contact details

Dr Charalambos Dendrinos

T: +44 (0)1784 443791

F: +44 (0)1784 433032

ch.dendrinos@rhul.ac.uk

knowledge of a certain period and discipline, including philosophy, history, law, religion, theatre, language, literature, papyrology and palaeography.

MA Late Antique & Byzantine Studies

Central London/main campus; FT/PT; 12/24 months

This is an intercollegiate University of London MA programme. It is designed for those who are interested in progressing to doctoral research in Byzantine studies and particularly in reading and editing Byzantine texts. Students take Greek language at the appropriate level, a course in Greek palaeography, a course option, and write a dissertation on a suitable topic. Options include: Byzantine Hagiography, Neoplatonism and Christianity, the Christianisation of the Roman World and Byzantium and the Crusades.

MPhil/PhD research

The Hellenic Institute offers supervision of doctoral research in the broad area of Hellenic and Byzantine Studies. For more information, please visit:

www.rhul.ac.uk/hellenic-institute/studying/

Profile

The Holocaust Research Centre at Royal Holloway is one of the leading academic centres of its kind in Europe, internationally recognised for its research, teaching, public advocacy and creative work.

- **Research:** our eight core staff, which include leading scholars Peter Longerich, David Cesarani OBE (Director), Dan Stone, Robert Eaglestone and Colin Davis, have published over 30 books in the last five years: three have won international prizes. In the same period, we have run over 25 national and international conferences and our staff are key collaborators for the US Holocaust Memorial Museum, the Imperial War Museum, the Wiener Library, and many others.
- **Public advocacy:** we advise the German Chancellor and British Government; Peter Longerich was an expert witness in the 'Irving Trial'.
- **Teaching:** we run a globally unique interdisciplinary MA programme, have over 20 PhD students affiliated to the Centre and our staff, and support secondary level education on the Holocaust.
- **Creative work:** one member of the Centre, Barry Langford, wrote an award winning short film 'Torte Bluma' (2005) and has another Holocaust related feature film in development.

Research interests

In responding to the Holocaust we research in a range of disciplines, including history (especially perpetrator and Jewish history), literary studies (British, American and European), film theory, media studies and philosophy, and welcome graduates in any of these areas. We especially welcome students with interdisciplinary projects or with projects that engage with other genocides.

The Research Centre has a very active research culture, which features lectures from the leading figures in the field (recent speakers have included Robert Jan van Pelt, Ulrich Herbert, Reinhard Rürup, Dina Porat, Saul Friedländer and Geoffrey Hartman), three one-day workshops on cutting-edge research each year, and regular conferences.

Programmes

In addition to supervising PhDs, the Centre runs a very successful taught MA programme in Holocaust Studies. It is taught by members of several different Royal Holloway departments, and offers a wide interdisciplinary approach to the subject (see page 71).

At a Glance

Programmes

MA Holocaust Studies (see page 73)
MPhil/PhD

Number of places Flexible

Fees and financial advice

See Funding your studies on page 90

How to apply

See Admissions process on page 94

Contact details

PhD research
Professor Robert Eaglestone
T: +44 (0)1784 443746
F: +44 (0)1784 479059
r.eaglestone@rhul.ac.uk

MA Holocaust Studies
Professor Dan Stone
T: +44 (0)1784 443310
F: +44 (0)1784 433032
d.stone@rhul.ac.uk



Humanities & Arts Research Centre HARC

www.rhul.ac.uk/Research/Harc/

Profile

The Humanities and Arts Research Centre (HARC) at Royal Holloway was established in January 2002 in order to enhance the College-wide research community, to promote advanced interdisciplinary research, and to help develop the College's national and international visibility and profile.

HARC works in cooperation with many departments across the College, individual staff members, and postgraduates in all faculties, as well as numerous colleagues, departments, and institutions within the University of London and the various institutes in the School of Advanced Studies. HARC also works with partner, national and international personal and institutional collaborators.

The Centre acts as a hub and facilitator for a wide range of lectures, seminars, presentations, workshops, colloquia and performances as well as postgraduate reading groups and seminars.

HARC operates under general annual themes and 'strands'. The theme for for 2011-12 is "Welcoming Strangers" and includes several series of events and projects by HARC 2011-12 Fellows, by eminent speakers and presenters worldwide and inside the College. The 2011-12 'Welcoming-Strangers' is particularly festive this year, as the former Faculty of Arts becomes the Faculty of Arts and Social Sciences. We have several projects that reach across new Departments who have joined the Faculty (for full information see www.rhul.ac.uk/harc/home). Past themes and strands include 'Philosophy and Literature', 'French Philosophy and Public Impact', visions of 'The Ends of the World', 'Minority Cultures' as well as special lectures and events. Past themes have included 'Philosophy and the Humanities' 2009-10, 'Citizenships' 2008-09, 'Dogma' 2007-08, 'Values – Ethics and Aesthetics' 2006-07, and 'Disciplines and Fragments' 2005-06'. Among our star speakers in the future and in the past are Jacques Ranciere, Francoise Balibar, Tony Harrison, Toril Moi, David Harvey, Judith Butler, Doreen Massey, and more.

At a Glance

Contact details

HARC Administrator
HARC@rhul.ac.uk

Professor Ahuvia Kahane
HARC Director
T: +44 (0)1784 443208
F: +44 (0)1784 439855
Ahuvia.Kahane@rhul.ac.uk



Profile

The Information Security Group (ISG) is one of the largest academic security groups in the world. It is at the forefront in the development of highly secure communications and computer systems and offers world-leading independent expertise in a field where trust and integrity are paramount. The Group offers a unique national resource for the training of information security specialists and, to ensure the industrial relevance of these qualifications, a number of the course lectures are given by a selection of leading industrialists.

The Information Security Group incorporates the Smart Card Centre of Excellence which conducts training and research in the field of Smart Cards, applications, and related technologies. The Centre also hosts an annual networking event, enabling industry professionals and students to showcase the latest developments in smart card technology. The Centre was founded by Royal Holloway, Vodafone and Giesecke & Devrient. It is a testimony to the international reputation of the Information Security Group that the largest Mobile Operator in the world and one of the largest global card manufacturers chose to found the Centre at the College.

MSc Programme

Established in 1992, Royal Holloway's MSc in Information Security was the first of its kind in the world. It enjoys a high international reputation and has over 1500 alumni for whom 'Studied at Royal Holloway' has become a recognised and highly respected badge among Information Security professionals worldwide.

This advanced MSc degree is an interdisciplinary course taught by the Information Security Group (ISG), and security experts from industry. It is designed to introduce the technical, legal and commercial aspects of Information Security.

PhD Programme

The ISG has a thriving PhD programme covering a wide variety of security-related topics. The academic staff have supervised more than 100 successful PhDs in many areas of Information Security such as the design and evaluation of cryptographic algorithms and protocols, network security, smart cards, access control, security management, and the integration of security techniques into specific applications.

A good overview of current research interests can be obtained by visiting home pages of academic staff, research assistants and postgraduate research students on our website: www.isg.rhul.ac.uk/phd/

At a Glance

Programmes

MSc Information Security (see page 66)
Certificate/Diploma in Information Security (see page 66)
MPhil/PhD Information Security

Number of places limited to 180

Fees and financial advice

See Funding your studies on page 90

How to apply

See Admissions process on page 94

Contact details

Carlos Cid
Director of Graduate Studies
MPhil/PhD Information Security
T: +44 (0)1784 414685
F: +44 (0)1784 430766
carlos.cid@rhul.ac.uk

Emma Mosley
Information Security Group Administrator
T: +44 (0)1784 443101
F: +44 (0)1784 430766
emma.mosley@rhul.ac.uk



Research facilities and partners

Postgraduate students are well provided for in terms of computing and other facilities, while the Library holds a good collection of security books and journals. The Group enjoys excellent contacts with leading companies that have strong expertise in information security and secure digital business. These companies include BT, Gemplus, Hewlett-Packard, Siemens, Symantec, Vodafone and a number of financial institutions and accounting firms. The Certificate and Diploma in Information Security are provided in partnership with QCC Ltd.

We aim to help today's graduates become tomorrow's business leaders. We offer a truly international learning experience by drawing upon our links with companies and institutions worldwide to provide programmes that are structured to reflect the global nature of modern business.

Profile

Our first-class reputation for intellectually challenging research, coupled with our established track record for internationally renowned research publications, feeds directly into our postgraduate programmes.

Investment

Phase two of the our £3 million Moore Building extension has now been completed, providing us with eight seminar rooms, three flexible work pods and social space. Phase one of the extension was completed in 2007, and saw the creation of a state-of-the-art 100-seat lecture theatre plus large glass atrium and walkway.

Taught programmes

MA European Business

Main campus; FT; 12 months

Europe is a major global trading partner alongside the USA, Japan and China and you will analyse how and why the EU influences the environment and strategy of international companies in a whole range of ways, including economic, competition and trade policies. You will cover the strengths and weaknesses of the European political economy and study a language to help set up your international career.

MA Asia Pacific Business

Main campus; FT; 12 months

This MA covers both the Asia Pacific region, and specific countries within it, examining the role of Japanese multinationals in the economies of Asia and globally, and the interaction between the Chinese economy, the region and the international economy. The School has extensive links throughout the region and chief executives from major Japanese firms are involved through guest lectures or research projects.

MA Marketing

Main campus; FT; 12 months

With an emphasis on marketing and consumer research in the creative, cultural and service industries, this is an advanced marketing programme for candidates who have a good first degree in a management or related discipline from an accredited university. It is a linguistically and intellectually challenging programme for candidates wishing to develop advanced marketing knowledge for careers in marketing, management and academic research.

MSc Business Information Systems

Main campus; FT/PT; 12/24 months

This programme addresses the requirement from industry for executives to understand and appreciate the strategic value of technology as a source of competitive advantage, both nationally and internationally. Students gain a theoretically informed and current knowledge of information and communications technology and its use in key business and organisational settings.

MSc Entrepreneurship

Main campus; FT; 12 months

This programme covers topics such as 'Business Opportunities, Ideas and Planning', 'Corporate Entrepreneurship', 'Responsible Entrepreneurship', 'Technology Venturing' and 'International and Comparative Entrepreneurship'. This will equip students with some of the key skills and knowledge required to develop their own projects, whether it be starting a new organisation or developing an entrepreneurial project within an existing organisation.

MSc International Accounting

Main campus; FT; 12 months

Students gain a thorough grounding in the theory and practice of accounting, in the context of its social, political, economic, natural and cultural environments, and are constantly challenged to improve their accounting, conceptual, qualitative and personal skills.

MSc International HRM

Main campus; FT; 12 months

This programme adopts an intellectually rigorous and critical approach to international human resource management strategies and practices, assessing them from a range of theoretical and analytical perspectives, explaining them in terms of their social and economic context, and considering their implications and impact for a range of stakeholders and interest groups. The MSc International HRM will have both a substantive international content, combined with a significant comparative dimension.

MSc International Management

Main campus; FT; 12 months

This programme includes all the major management functions and will enable you to build effective management skills, understand management within the global context and develop a wide international network of associates. This is achieved through the integration of a significant international element in our courses.





“The MSc Sustainability and Management has been a very rewarding and stimulating programme for me. It has provided me with an understanding of how corporations can integrate sustainable development into their business and how they can become more environmentally responsible.”

Victoria Ndoh
MSc Sustainability & Management

MSc Leadership & Management in Health

Main campus and Kingston; FT/PT; 12/24 months

This unique MSc is specifically designed to meet the needs of those already working, or intending to work, in the health and social care services in the public, private and voluntary sectors in both the UK and internationally. Its evidence base is drawn from the latest research and practice in health sector leadership and management, combined with the practical application of new knowledge and skills to work-based situations. The course is based on the new health leadership competencies in the UK.

MSc/Diploma in Sustainability & Management

Main campus; FT; 12 months

The programme will enable you to understand connectivities beyond the borders of just one discipline and you will develop the skills to communicate with experts across a variety of backgrounds. You will acquire the knowledge and skills to help you become an expert in sustainability for leading companies, governmental agencies and Non-Governmental Organisations (NGOs).

For further information on our programmes, please visit:

www.rhul.ac.uk/Management/Prospective-Students/post/MBA/index.html

Research opportunities

Applications are invited for postgraduate research places leading to the degrees of MPhil and PhD. Applicants should have, or expect to be awarded, a good quality Masters degree from a recognised institution in a field related to Management. The Masters degree must have a substantial research methodology component. All staff can accept suitably qualified PhD students who qualify for studentships or who have alternative means of support. Staff details are given on our website and you may directly contact an academic member of staff with whom you are interested in working to discuss potential projects.

Career prospects

We prepare our graduates for successful future careers. Some of the positions our graduates now hold are: Vice President at JP Morgan (Hong Kong); Executive Director of Goldman Sachs; Head of New Media at Cellnet; Senior Consultant at Deloitte Consulting; Media Planner at the BBC.

At a Glance

Programmes

MA European Business

MA Asia Pacific Business

MA Marketing

MSc Business Information Systems

MSc Entrepreneurship

MSc International Accounting

MSc International HRM

MSc International Management

MSc Leadership & Management in Health

MSc/Diploma in Sustainability &

Management MBA International

Management MPhil/PhD

Fees and financial advice

See Funding your studies on page 90

How to apply

See Admissions process on page 94

Contact details

Dr Romano Dyerson

Director of Graduate Studies

T: +44 (0)1784 443789

F: +44 (0)1784 276100

R.Dyerson@rhul.ac.uk

Professor Jeffrey Unerman

Head of the School of Management

T: +44 (0)1784 276606

F: +44 (0)1784 276100

jeffrey.unerman@rhul.ac.uk

Moya Watson

Postgraduate Programmes Coordinator

T: +44 (0)1784 414479

F: +44 (0)1784 276100

moya.watson@rhul.ac.uk

Management research centres

www.rhul.ac.uk/Management/Research/

Profile

The School of Management has a strong commitment in maintaining and intensifying its active research culture. This involves supporting each individual in their specialist research and publishing activities, as well as promoting an environment in which research is a shared experience. A strong feature of our research is its international and comparative focus. We aim to apply the insights of social science to the theory and practice of Management in private, public and voluntary sector organisations.

For more information, please visit our website:
www.rhul.ac.uk/Management/Research/

Research Groups

- Accounting, Finance and Economics
- Marketing
- Organisation Studies and Human Resource Management
- Public Services Management
- Strategy and International Business
- Technology and Information Management

Research Centres

Centre for Public Services Organisations (CPSO)

The CPSO covers the organisational analysis of the public services; the core themes are decision-making, organisational change and organisational learning.

Research activities

- Decentralisation and Performance: Autonomy and Incentives in Local Health Economies
- Managing Medical Performance
- The Visible and Invisible Performance Effects of Transparency in Medical Professional Regulation
- Networks in Health Care: A Comparative Study of Their Management, Impact and Performance

Centre for Research into Sustainability (CRIS)

CRIS is a joint initiative between the School of Management and the Department of Geography. Interdisciplinary in nature, CRIS combines differing and complementary approaches to sustainability to offer a rounded contribution to understanding this complex contemporary phenomenon.

The research of CRIS looks at all the three dimensions of the sustainable development concept:

- Research into Social Sustainability
- Research into Environmental Sustainability
- Research into Economic Sustainability

Centre for Workplace Research in Asian Society (CWRAS)

CWRAS brings together a number of researchers and research projects that focus upon the study of workplaces in the Asian region.

Our intention with CWRAS is to:

- create a forum for the discussion and dissemination of research on work and workplaces in Asia, especially the Asia Pacific region
- promote research that places management and employment change in contemporary workplaces in the dynamic Asia Pacific region at centre stage
- nurture and foster research that takes seriously the importance of economic, political, geographic and sociological contexts
- provide a liaison point for both UK-based and international scholars with similar and related interests

The Royal Holloway MBA

Faculty of Management & Economics

www.rhul.ac.uk/mba

The Royal Holloway MBA responds to the emerging challenges of the global business environment and will develop your business skills and management techniques in order to help you further your career. Our intensive one-year MBA programme has been designed specifically to stretch you. You will learn how to apply your practical business experience to new conceptual approaches and gain wider exposure to the management principles and techniques required to manage challenges presented by the business world. The diversity of our students will help you to put your own experience into context as well as developing business networks all over the world.

MBA programme

MBA International Management
MBA International Management (with Marketing)
MBA International Management (with Finance)
MBA International Management (with Sustainability)
MBA International Management (with International Business Law)

Our MBA will provide you with

- detailed knowledge relating to problems of management in different contexts
- conceptual tools for analysing management in the private or public sector
- critical awareness of research methodologies
- a learning environment where you will use your experience of organisations to engage with and challenge both the theoretical and case material
- an environment where you can work as a team on new intellectual and management problems

Industry engagement and Career development

Our Business Consultancy Project provides you with a real business situation which benefits the company concerned. It will challenge you to consolidate the skills you have acquired throughout the MBA programme and work as a team. You will also study the importance of the consultancy business within the economy.

The School's links with high profile companies allows you to attend presentations and Q&A sessions by key speakers from industry. They will provide an insight into their company and discuss topics relevant to today's business world.

Our MBA Careers Advisor will support you whilst you study the Personal Development Portfolio module and will provide individual, tailored, careers coaching.

Core courses

International Business Economics
International Information Systems
International Operations Management
International Business Strategy
Leadership & Behaviour in Organisations
International Human Resource Management
International Marketing
International Accounting & Finance
Business Research Methods
Philosophy of Management
Personal Development Portfolio
Business Consultancy Project
Dissertation

Association of MBAs (AMBA) Accreditation



Our MBA programme is accredited by the Association of MBAs. AMBA is an international impartial authority on the MBA and their accreditation service represents the gold standard of quality for post-experience business degrees. AMBA currently accredits MBA programmes at nearly 180 of the world's top business schools.

Contact details

Helen McEwan
MBA Programme Administrator
T: +44 (0)1784 414366
F: +44 (0)1784 276100
helen.mcewan@rhul.ac.uk



"I chose to study my MBA at Royal Holloway as the institution has a strong reputation for leading research. I was very impressed with the syllabus and the option to study sustainability management as this is an area I have a keen interest in. The Business Consultancy Project involved a multinational organisation presenting us with a consultancy project to work on. This was extremely rewarding, as in addition to helping enhance my teamwork skills I also gained personalised feedback from the company."

Samantha Groves,
Royal Holloway MBA student, 2010-11

Research in the Department of Mathematics aims to extend the boundaries of the subject and to work with users of mathematics in commerce and industry.

Profile

Our research is based in several groups: Algebra; Discrete Mathematics and its Applications (including combinatorial theory, finite geometry, graph theory, cryptography); Information Security; Number Theory (including metric number theory, multiplicative number theory, computational number theory); Operational Research; Quantum Dynamics (including atomic and molecular systems with few degrees of freedom, quantum information theory, quantum computing); Statistics and Probability (including time series and forecasting, and statistical estimation theory).

Taught programmes

MSc Mathematics of Cryptography & Communications

Main campus; FT/PT; 12/24 months

This degree programme is a highly focused one-year degree giving instruction into some of the mathematics behind modern secure information and communications systems. The programme of study specialises in mathematics relevant for public key cryptography, coding theory and information theory.

MSc Mathematics for Applications

Main campus; FT/PT; 12/24 months

This programme covers a wider range of topics from both applied and discrete mathematics. It is aimed at students with a good undergraduate degree in Mathematics who want to learn some more of the subject in areas which are relevant to real life applications.

MSc Information Security

Main campus; FT/PT/Distance learning; 12/24 months

This advanced MSc degree is an interdisciplinary course taught by the Information Security Group and security experts from industry. It is designed to introduce the technical, legal and commercial aspects of Information Security and is available through two distinct pathways: Technical Pathway and Secure Digital Business Pathway. This degree is widely recognised as a stepping stone to a career as an information security expert and can be studied on a full-time or part-time basis (day release or block mode). It is also available online as part of the distance learning programme. Alternatively, it can be studied through CPD Mode (Continuing Professional Development Mode) over an extended period.

Certificate and Diploma in Information Security

Off campus; PT; four years

Students on this programme complete a commercial course provided by QCC Limited and undertake a project/dissertation with the Information Security Group.

For more information on our programmes, please visit our website.

Research opportunities

Applications are invited for postgraduate research places leading to the PhD degree for the Department's research projects. Applicants should have, or expect to be awarded, the equivalent of a British Second Class Honours degree related to the field in which they wish to undertake research. The Department has some limited EPSRC funding.

Research interests

- **Koenraad Audenaert:** Quantum information theory and matrix analysis
- **Yiftach Barnea:** Algebra, group theory, pro-p groups and Lie algebras
- **Jon Barrett:** Quantum information theory and the foundations of quantum mechanics
- **Simon Blackburn:** The interface between combinatorics and cryptography, cryptanalysis, combinatorial schemes for copyright protection, group theory and finite field theory
- **Jens Bolte:** Mathematical physics, and in particular, quantum chaos and semiclassical quantum mechanics
- **Rainer Dietmann:** Analytic number theory and Diophantine equations
- **Stefanie Gerke:** Combinatorics, with a focus in graph theory and algorithms
- **Glyn Harman:** Analytic number theory, and in particular, application of sieve methods, Diophantine approximation and metric number theory
- **Benjamin Klopsch:** Infinite groups from an arithmetic point of view and problems in additive combinatorics and number theory
- **Alexey Koloydenko:** Statistical image analysis, algebraic statistics, and hidden Markov models
- **James McKee:** Computational number theory, including elliptic curves over finite fields, Pisot numbers, and Salem numbers



“During my first year I was allowed to investigate virtually any branch of Mathematics that I took an interest in and there was at least one member of staff who was willing to offer advice. Now in my third year, my field has narrowed but the approachability of the staff hasn’t diminished.”

Laurence O’Toole, PhD in Mathematics

- **Francisca Mota-Furtado:** Theoretical atomic physics, Rydberg atoms in external fields and open quantum systems
- **Pat O’Mahony:** Quantum theory with a particular emphasis on quantum chaos and quantum and semi-classical theory of atomic and mesoscopic systems
- **Rüdiger Schack:** Open quantum systems and the physics of information, including quantum information theory and quantum cryptography
- **Teo Sharia:** Parametric estimation theory, stochastic approximations theory, recursive estimation procedures, hidden Markov chains, time series, and robust methods
- **Mark Wildon:** Representation theory, group theory and combinatorics

The Information Security Group can be found on page 61.

Research facilities and partners

Postgraduate students are well provided for in terms of computing and other facilities, while the library holds a good collection of mathematical books and journals; the national collections of the London Mathematical Society and the Operational Research Society in central London are also easily accessible.

The Department enjoys excellent contacts with leading companies that have strong expertise in information security. The Department also plays an active part in the Information Security Group (see page 61).

Career prospects

The Department of Mathematics prepares graduates for successful careers in a variety of industries, such as information security, IT consultancy, banking and finance, higher education and telecommunications. In recent years our graduates have entered into many interesting careers, including Principal Information Security Consultant at Abbey National plc; Senior Manager at Enterprise Risk Services, Deloitte & Touche; Global IT Security Director at Reuters; and Information Security Manager at London Underground.

At a Glance

Programmes

MSc Mathematics of Cryptography & Communications
MSc Mathematics for Applications
MSc Information Security
Certificate/Diploma in Information Security
MPhil/PhD Information Security
MPhil/PhD Mathematics

Number of places Variable

Fees and financial advice

See Funding your studies on page 90

How to apply

MSc Mathematics for Applications;
MSc Mathematics of Cryptography & Communications: contact Guillaume Subra

MSc Information Security; Certificate and Diploma in Information Security: contact Emma Mosley emma.mosley@rhul.ac.uk

MPhil/PhD Information Security; MPhil/PhD Mathematics: contact Keith Martin
See also Admissions process on page 94

Contact details

Carlos Cid
Director of Graduate Studies
T: +44 (0)1784 01784 414685
F: +44 (0)1784 430766
carlos.cid@rhul.ac.uk

Rüdiger Schack
Head of Department
T: +44 (0)1784 443097
F: +44 (0)1784 430766
r.schack@rhul.ac.uk

Guillaume Subra
Departmental Administrator
T: +44 (0)1784 443085
F: +44 (0)1784 430766
maths@rhul.ac.uk

Media Arts

Faculty of Arts & Social Sciences

www.rhul.ac.uk/Media-Arts/

The Media Arts Department is internationally recognised as one of the leading research departments in this field in the UK. It successfully combines film and television history and theory with leading edge media practice. In the latest Research Assessment Exercise, Media Arts was ranked joint sixth in the UK for its research; 20 percent of our research was deemed to be world leading and 55 percent of international excellence.

Profile

Our 24 full-time academic staff, some 50 MA students, and 30 research students, all contribute to the vibrant research culture of the Department. The size of our Department and our multi-faceted research expertise fosters successful synergies between film and television history and theory and creative practice. Our distinctive research culture brings together the practical and professional with the more conventionally academic and conceptual. We deal with mass media and the fine arts and work on both fictional and factual representations.

Taught programmes

MA Documentary by Practice

Main campus; FT; 12 months

This is an exciting and dynamic time for Documentary Practice. Royal Holloway provides contemporary tuition in the technological, ethical and intellectual developments in this recent boom in both broadcast and cross platform Documentary.

You will be taught by award winning documentary filmmakers and high profile TV commissioners. Course Tutors, Marc Isaacs, Helen Littleboy and Victoria Mapplebeck, are all active Directors and Producers with excellent industry contacts. Students will develop skills via collaboration with these tutors on work in progress, a unique learning opportunity that will provide genuine vocational experience.

MA International Broadcasting

Main campus; FT/PT; 12/24 months

This innovative course equips students for a career in the expanding broadcasting markets of the world. It provides a comprehensive introduction to television and broadcasting industries around the world; to the major principles of programme construction and the operation of programme markets. It provides an in-depth study of the production of a drama series for British TV, and culminates in the production of a short broadcast item by each student using our excellent range of equipment.

MA Producing Film & Television

Central London; FT; 12 months

Concentrating on fiction, this Masters programme aims to teach aspiring producers the skills they need for the film and television industries. It teaches the creative, management,

business and vocational skills essential to a producer who wants to work in either television or film. The degree has close links to the UK industry and is taught by established industry professionals. This MA suits creative and highly motivated students seeking a challenging, practical degree.

MA Screenwriting for TV & Film (Retreat)

Various locations; PT; 24 months

Especially appropriate for those working in the film/TV industries, the MASTFIR is taught over 2 years in six intensive week-long residential courses, at Egham, Central London and beautiful rural writers' retreat locations. Between retreats writers work online via teaching and chatroom sites. MASTFIR provides grounding in film, TV and web drama formats, then students specialise in TV or Feature Film. Interaction with industry guests, learning script budget and project marketing, and intensive performance work with professional actors is included. The programme commences in April each year.

Research opportunities

Due to the varied expertise of staff in our department, we are able to offer supervisions for well-qualified students working towards doctorates in a broad range of specialisms in the fields of film, mixed-media and television studies, cultural theory and media practice. You are encouraged to identify a suitable supervisor for your research project and email both them and the Director of Graduate Studies (Professor C Townsend) to discuss your project. Staff details are listed on our website.

Studentships and Fee Waivers are also listed on the website.

Research interests

Staff in Media Arts are particularly interested in supervising projects in the following broadly defined areas:

- Modernist film, photography and intermedial activity, with particular relation to fine art.
- British film and television
- Film and television policy
- European cinema, in particular, East and West German cinema, Irish cinema, European migrant and diasporic cinema, European auteurs
- Transnational and world cinema
- Hollywood cinema and American television
- Screen genres, in particular, the gothic, fantasy, the western, science fiction, war films, the avant-garde, political drama and 'serious' television
- Cinema and national identity, particularly in regard to the cinemas of the US, UK, Europe and the Middle East
- Gender, sexuality and cinema
- Psychoanalysis and screen media
- Representations of the Holocaust in film and television



"I enrolled for the MA in Documentary by Practice to enhance my skills as a documentary director. It allowed me to develop my creativity, reflect on my future career and gave me the chance to have an international project before employment with the BBC World Service."

**Maria Florencia Ripani,
MA Documentary by Practice**

- Film, history and memory
- Celebrity culture
- The theory and practice of film and video production
- The theory and practice of documentary
- The theory and practice of screenwriting and film and television development

Research facilities

Our postgraduate students have access to state-of-the-art facilities for practice-led and archive-based research. The Media Centre includes a purpose-built digital television studio, Avid Xpress Pro editing suites, two multimedia labs, a sound studio and an art direction/scene construction space. The location services store offers a good stock of high-quality DVCAM video camcorders and a complementary range of sound recording and lighting equipment. Our technical support team has an extensive range of industry and educational experience and provides operational training and advisory support for project work. Postgraduates can also access an impressive range of resources, including our departmental video/DVD collection consisting of over 3,000 titles as well as dedicated film screening and copying facilities.

The College library holds substantial research materials and students can also use the University of London Library in Senate House and other collegiate libraries. The British Library and the British Film Institute with their extensive archival and library resources are within easy access.

The department, faculty and college together offer a number of training courses for research students, some with direct relevance to the individual PhD, others of more general concern. Doctoral students are required to complete a given number of training days in the first three years of their registration.

Research environment

We do all we can to create a stimulating and rewarding environment in which our research students may work. There are numerous events, seminars and workshops, particularly directed towards PhD students. Reading groups and regular research seminars, held in early evening slots in our central London facility in Bedford Square, allow for the exchange of ideas and the offer the chance to present papers. Many of these events are organized from within the PhD cohort, and they include short evening conferences, with guest keynote speakers from outside the department. The academic year culminates in a two-day conference in June, where all active research students are required to present a twenty-minute paper on an aspect of their work, for peer review. This conference also includes a presentation by a prestigious keynote speaker, and dinner for all in a good local restaurant.

At a Glance

Programmes

MA Documentary by Practice
MA International Broadcasting
MA Producing Film & Television
MA Screenwriting for TV & Film (Retreat)

Number of places No fixed number

Fees and financial advice

See Funding your studies on page 90

How to apply

See Admissions process on page 94

Contact details

Research Programmes:
Director of Graduate Studies:
Professor Christopher Townsend
T: +44 (0)1784 414335
F: +44 (0)1784 443832
c.townsend@rhul.ac.uk

Taught Programmes:
Ms Sue Clayton
MA Programme Director
T: +44 (0)1784 443945
sue.clayton@rhul.ac.uk

Angela Godden
Postgraduate Administrator
T: +44 (0)1784 443734
F: +44 (0)1784 443832
angela.godden@rhul.ac.uk

Career prospects

Our graduates are working worldwide as researchers and lecturers and in a range of positions across the media from feature film production through to broadcast television, all forms of print and online technologies. Our alumni can be found in key roles in larger organisations such as Channel 4 Films and the BBC, while others work in smaller specialist companies such as the Moving Picture Company and Revolver Entertainment. Many follow freelance careers as directors, producers, screenwriters and editors in various media and their work appears at film festivals worldwide such as Cinéma du Réel and The London Film Festival.

Modern Languages, Literatures & Cultures

Faculty of Arts & Social Sciences

www.rhul.ac.uk/Modern-Languages/

The School of Modern Languages, Literatures and Cultures brings together the four languages studied at Royal Holloway – French, German, Hispanic Studies and Italian. Together they offer a long established record of excellence in teaching and research, with a commitment to the development of new interdisciplinary cultural courses and the comparative study of international literatures and cultures.

Profile

We aim to broaden students' horizons through an in-depth knowledge of foreign languages, literatures and cultures. Our staff have expertise in an exciting range of literature and linguistics (from the medieval period to the present), film, history and philosophy. Postgraduate students pursue a breadth of topics, with a strong cohort undertaking interdisciplinary work in literature, cinema, art, history and philosophy. The School's Research and Postgraduate Committee undertakes to support research with a generous grant scheme for postgraduate students and facilitation of inter-departmental communication on research matters.

The Faculty of Arts provides a thriving research environment, with a number of departmental and inter-departmental seminars, special lectures and research centres. The internationally-recognised Holocaust Research Centre uniquely brings together researchers from across the world working on different aspects of the Holocaust from a range of disciplines (see page 59). The Humanities and Arts Research Centre (HARC) also promotes interdisciplinary research as well as communication between researchers in differing areas of the arts and humanities (see page 60).

A number of College-based awards for PhD work are usually available. If you wish to apply for any of these awards, please

contact the appropriate Director of Graduate Studies prior to completing application forms. Non-linguists are welcome to apply. Students will, where appropriate, be encouraged both to read in the original language and to develop their language skills in the School.

Each language subject has a separate entry which you should consult in conjunction with these pages (see pages 72-75).

Taught programmes

MA Holocaust Studies

Main campus; FT/PT; 12/24 months

This is an interdisciplinary MA, combining both historical and cultural elements, which will appeal to students from a wide range of disciplines – historical, literary, musical and philosophical. Historians from the Department of History and the School of Modern Languages, Literatures and Cultures work with specialists in English, French and German literature, musicologists and experts in media arts and philosophy to offer a strongly research-supported degree. The compulsory core course is entitled, The History and Historiography of the Holocaust and is supplemented by a number of optional courses which give the opportunity to work on related historical or philosophical topics. Other optional courses focus on the representation of the Holocaust in literature, film, television and music. You will also write a dissertation, supervised by one or more members of staff in appropriate disciplines.

There are no compulsory language requirements for admission to this degree although, where appropriate, students will be able to use their knowledge of modern European languages, especially German, in both core and optional courses.





“My research has been facilitated by the substantial resources. It has also benefited from the many talks, seminars and cultural events held in collaboration with other universities and institutions. My experience here has so far been very stimulating and rewarding.”

Lucia Rinaldi,

PhD in Contemporary Italian Crime Fiction

MA by Research in French, German, Hispanic Studies and Italian

Main campus; FT/PT; 12/24 months

This flexible degree offers students the chance to undertake independent, but closely supervised, research work to a very high level and is accompanied by targeted research training. Working closely with a specialist supervisor, or supervisors, students develop a clearly defined research topic and over the course of a year (two years part-time) complete a dissertation of ca. 35,000 words. This dissertation will be a substantial piece of work in its own right, and it may lay the foundations for a more ambitious PhD project. The degree is particularly suited to students who have already identified a specific area on which they wish to conduct focused research, or whose other commitments do not permit them to follow taught, timetabled programmes. It enables students to explore their own interests in depth, and is tailored both to those who prefer to adopt an individualised approach to Masters study and to those who seek to proceed to doctoral study. A wide range of topics is possible and potential applicants are advised to familiarise themselves with the areas of teaching and research expertise within the School. Topics should usually be discussed with a potential supervisor in advance of an application.

Research facilities and partners

In the award-winning International Building, students have access to state-of-the-art language-learning facilities – satellite TV and video viewing, Computer Assisted Language Learning laboratories and radio booths – all of which they can use both for classes and private study.

The College library holds substantial research material and postgraduate students can also use the facilities of the British Library and other University of London libraries, including the Institute of Germanic and Romance Studies and the University Library in Senate House.

Royal Holloway jointly leads the development of the University of London Institute in Paris, with Queen Mary, University of London, to offer a unique range of teaching and research opportunities.

Career prospects

In recent years a number of our postgraduates have gone on to successful academic careers in Britain and abroad in the fields of modern languages, critical theory and film. Postgraduates have also embarked upon many interesting and successful careers outside academia – in the UK, continental Europe and the United States – including

At a Glance

Programmes

MA French by Research
MA German by Research
MA Hispanic Studies by Research
MA Holocaust Studies
MA Italian by Research

Fees and financial advice

See Funding your studies on page 90

How to apply

See Admissions process on page 94

Contact details

Dr Sarah Wright
Director of Graduate Studies
T: +44 (0)1784 443758
F: +44 (0)1784 470180
sarah.wright@rhul.ac.uk

Dr Richard Pym
Head of the School
T: +44 (0)1784 414006
F: +44 (0)1784 470180
richard.pym@rhul.ac.uk

Mrs Ann Hobbs
Postgraduate Administrator
T: +44 (0)1784 443201
F: +44 (0)1784 470180
a.hobbs@rhul.ac.uk

journalism at *The Independent*, work for NGOs, trade sales, publishing, professional translating, teacher/translator at Berlitz, opera direction, creative arts, librarianship, TEFL certificates at the Institute of Education and secondary school teaching.

French

School of Modern Languages, Literatures & Cultures

www.rhul.ac.uk/Modern-Languages/

Profile

Over the centuries French writers, philosophers and artists have shaped our ideas of freedom, citizenship and the good life; challenged our views of society, identity and cultural memory; and blazed trails of artistic expression in painting, cinema and literature. This is reflected in the interdisciplinary scope of our French studies, making Royal Holloway an ideal place to study for an MA in French by Research.

Taught programmes

MA French by Research

Main campus; FT/PT; 12/24 months

(see page 70)

Research opportunities

Postgraduate students are encouraged to take part in our intellectual activities, including a regular research seminar which meets to discuss papers by research students, staff and visiting scholars. We usually have 12 to 15 PhD students working with us (or pursuing research through one of our graduate exchanges with France).

In recent years our postgraduates have organised a national conference held in the College's central London base in Bedford Square, near Senate House in Bloomsbury. One research group, focused on Autobiography and Life/Writing, has included Philippe Lejeune among recent speakers. Another, on poetry and its relation to other forms of expression, has welcomed a number of well-known poets and critics, while a research cluster based in the visual arts (from surrealist painting to contemporary film and video) has resulted in an ongoing series of talks and events.

Research interests

Our research covers a wide range of literary, cultural and historical themes. Literary interests range from Medieval literature, through the Renaissance, to the 18th, 19th, 20th and 21st centuries. Major themes currently include: Occitan literature, Troubadour poetry, vision, imagination and demonology in the Renaissance, cross-dressing in 17th-century France, 17th- and 18th-century theatre, laughter, naturalist writing, literature and the visual arts 1850–2000, the representation of the body in fiction, autobiography and related genres, modern and contemporary French fiction and poetry, philosophy and ethics, the Holocaust, cultural memory and marginality, women's writing, francophone literature and post-colonialism, consumer culture and globalisation, gender and history in film, sociolinguistics, phonetics and phonology. In addition, we have specialists on Marcabru, Montaigne, Ronsard, du Trietz, de Moodard, Varda, Denis, Redonnet and Houellebecq. For further information, please visit our website.

At a Glance

Programmes

MA French by Research
MPhil/PhD

Number of places

Open: applications from good candidates, including those with non-standard profiles, will always be considered.

Admission is on the basis of merit and our ability to provide expert supervision on the topic of a proposed thesis.

Contact details

Dr Sarah Wright
Director of Graduate Studies
T: +44 (0)1784 443758
F: +44 (0)1784 470180
sarah.wright@rhul.ac.uk



German

School of Modern Languages, Literatures & Cultures

www.rhul.ac.uk/Modern-Languages/

Profile

German research and teaching both include, and move beyond, the more traditional areas of German studies. We particularly encourage interdisciplinary research proposals that are concerned with the role of German history, culture and philosophy in the humanities today, and graduates in comparative literature, cultural studies, philosophy, English, history, music and other humanities disciplines are therefore very welcome to apply.

More than a dozen PhD students are supervised and we offer postgraduate supervision by scholars of national and international standing in an unusually large range of fields – aesthetics, modern and contemporary literary and cultural studies, comparative literature, literary theory, philosophy, intellectual history and 20th-century German history.

We have an excellent record of research support from the AHRC and the Leverhulme Trust, and research collaborations are in place with other colleges of the University of London and Oxford.

Taught programmes

MA German by Research

Main campus; FT/PT; 12/24 months

(see page 70)

Research opportunities

Applications are invited for postgraduate research places leading to the PhD degree. Applicants should have, or expect to be awarded, a Masters degree or equivalent.

We offer supervision to suitably qualified PhD students who qualify for studentships or who have alternative means of support. Our staff can provide MPhil and PhD supervision in German History, Modern Literature (from the 18th century to the present day), Film, and Modern European Philosophy, as well as on topics such as music and philosophy. Staff details are given on our website. Please email the academic staff member with whom you are interested in working to discuss potential projects.

Research interests

There is wide-ranging research activity in modern German literature from the 18th to the 21st century, with emphasis on the Enlightenment and Goethe (including gender and political issues); realism and 19th-century women's literature; film and literature in the Weimar Republic; Modernism and the European avant-garde; contemporary women's literature and nomadic writing.

At a Glance

Programmes

MA German by Research

MPhil/PhD

Number of places

Open: applications from good candidates, including those with non-standard profiles, will always be considered.

Admission is on the basis of merit and our ability to provide expert supervision on the topic of a proposed thesis.

Contact details

Dr Sarah Wright

Director of Graduate Studies

T: +44 (0)1784 443758

F: +44 (0)1784 470180

sarah.wright@rhul.ac.uk

In 20th-century German history, the main research focus is on the Weimar Republic, National Socialism and Holocaust Studies, and there are strong links with Yad Vashem – the International Centre for Holocaust Studies in Jerusalem – and the Centre for Advanced Holocaust Studies at the United States Holocaust Memorial Museum in Washington. In philosophy, research projects and publications involve the whole range of modern European philosophy from Kant to Adorno, Habermas and Derrida, as well as aesthetics, particularly of music, literary and cultural theory, and the relationship between the analytical and hermeneutic traditions of philosophy.

An editor and the reviews editor of the international journal *Austrian Studies*, and one of the editors of the *Publications of the English Goethe Society*, are members of staff.

Comparative and interdisciplinary studies are particularly well represented; teaching and research links with other departments such as History, Music and English are very strong, and applications are welcomed from candidates who wish to read for MAs or PhDs in such fields. For further information, please visit our website.

Hispanic Studies

School of Modern Languages, Literatures & Cultures

www.rhul.ac.uk/Modern-Languages/

Profile

Hispanic Studies at Royal Holloway is strongly committed to innovative approaches to postgraduate study and research across a range of fields including cultural studies, critical theory, feminism and gender theory, psychoanalysis, film studies, literature and the visual arts (in both Spain and Latin America). Hispanic Studies also represents an important and growing part of the College's tradition of strength in languages and has excellent links in Spain and Latin America. The cultural wealth of the Spanish-speaking world, with all its vibrancy and diversity, continues to make a unique contribution to our civilisation, while Spain itself is now a major player on the European stage. All of this provides a rich backdrop for what is a fascinating and richly varied field of study.

Taught programmes

MA Hispanic Studies by Research
Main campus; FT/PT; 12/24 months
(see page 70)

Research opportunities

We pride ourselves on being at the centre of a thriving research culture, organising regular research seminars and special lectures which postgraduate students are particularly welcome to attend.

We welcome applications from students wishing to pursue postgraduate research at MPhil and PhD levels and a limited number of teaching assistantships are available to research students.

Research interests

Our research interests cover a wide range of literary, cultural and historical themes, including early modern literature and visual arts, prose fiction from the 19th century to the present day, contemporary Peninsular and Latin American writing and film, modern Spanish theatre, Latin American photography and contemporary Spanish history and popular culture.

Our research draws on a variety of theoretical sources, including narratology, comparative literature, psychoanalysis, poststructuralist criticism and philosophy, film theory and the new historicisms.

Recent projects by our members of staff have focused on, among other authors and topics, Miguel de Unamuno, Federico García Lorca, the works of Adelaida García Morales and Esther Tusquets, the gypsies of early modern Spain, the dramas of Calderón, contemporary Mexican cinema, and the Don Juan figure in Spanish culture and thought.

For further information, please visit our website.

At a Glance

Programmes

MA Hispanic Studies by Research
MPhil/PhD

Number of places

Open: applications from good candidates, including those with non-standard profiles, will always be considered.

Admission is on the basis of merit and our ability to provide expert supervision on the topic of a proposed thesis.

Contact details

Dr Sarah Wright
Director of Graduate Studies
T: +44 (0)1784 443758
F: +44 (0)1784 470180
sarah.wright@rhul.ac.uk



Italian

School of Modern Languages, Literatures & Cultures

www.rhul.ac.uk/Modern-Languages/

Profile

Royal Holloway has established itself in recent years as one of Britain's largest centres for postgraduate research in Italian. Since 2002, 22 PhDs have been completed on many different aspects of Italian literature and culture, history, language and the mass media from the Middle Ages to the present. Staff have expertise especially in Renaissance studies, cultural studies, modern poetry and opera, Anglo-Italian cultural relations, 19th- and 20th-century art, cinema and detective fiction.

We have a thriving research environment and staff members are involved in large-scale AHRC-sponsored research projects. Professor Jane Everson is directing a project on the 'Italian Academies 1530-1700', while Dr Giuliana Pieri has recently completed a three year collaborative project on 'The Cult of the Duce: Mussolini and the Italians 1918-2005'. We organise seminars and conferences in which graduate students are regularly involved. We are partners in the Joint Postgraduate Training Programme in Italian (originally funded by the AHRC) that brings together staff and students in Italian from the universities of Cambridge, Reading and Oxford, as well as Royal Holloway and University College London.

We adhere to the view that Italian culture embraces all aspects of the arts, history and social life and welcome proposals for projects in unusual areas and on unconventional topics as well as mainstream ones.

Taught programmes

MA Italian by Research

Main campus; FT/PT; 12/24 months

(see page 70)

Research opportunities

You can study for a University of London MPhil or PhD by thesis. Supervision can be provided in most areas of Italian cultural history, language and literature, from Dante and the Renaissance to the present day. MA Italian by Research by research and thesis is also available. Please refer to our website for more specific information on the fields of specialisation of members of staff.

We currently have over 40 graduate research students and have a lively community which regularly meets for staff and postgraduate seminars. In those seminars, staff, postgraduate students and guest speakers present and discuss their current research work.

At a Glance

Programmes

MA Italian by Research

MPhil/PhD

Number of places

Open: applications from good candidates, including those with non-standard profiles, will always be considered.

Admission is on the basis of merit and our ability to provide expert supervision on the topic of a proposed thesis

Contact details

Dr Sarah Wright

Director of Graduate Studies

T: +44 (0)1784 443758

F: +44 (0)1784 470180

sarah.wright@rhul.ac.uk



Research interests

Our research strengths are in Italian and European literature and culture in the 13th and 14th centuries; Renaissance literature, drama and thought; literature by and about women from the 15th to the 17th centuries; 19th-century and fin de siècle literature and culture; modern and contemporary poetry, drama, the novel, music, and culture; the Fascist period; postcolonialism in Italy.

For further information, please visit our website.

Music

Faculty of Arts & Social Sciences

www.rhul.ac.uk/Music/

The Music Department at Royal Holloway is renowned nationally and internationally, and attracts first-class students from all over the world. The Department was rated 5* (the highest grade) in both the 1996 and the 2001 Research Assessment Exercises, and was the highest ranked Music Department in the UK in the 2008 round.

Profile

With one of the largest postgraduate communities in the UK (typically, around 50–60 research students and around 20 Masters students each year), we have established ourselves as one of the country's premier institutions for postgraduate education in Music. Our research profile is of international standing, and is reflected in our commitment to excellence in all aspects of our postgraduate provision.

Students work closely with internationally recognised experts throughout their period of study, in seminars and tutorials and in research guided by a supervisory team. Special lecture series, postgraduate study days (at which students give papers and chair discussions), composer workshops and masterclasses all enhance their experience of university life; teaching assistantships offer invaluable career development potential. Student support extends from subsidised photocopying and a small annual research allowance, to careers days and guidance on presenting work for publication.

Taught programmes

MMus Advanced Musical Studies

Central London/main campus; FT/PT; 12/24 months

A programme offering a balance of broad-based and specialist training, designed to work as a self-standing qualification or as a preparation for research (including practice-based research). Areas of study include Composition, Ethnomusicology, Historical Musicology, Multimedia and Film Music, Performance, Performance Studies, and Theory and Analysis.

Research opportunities

Applications are invited for places on our MPhil and MPhil/PhD research programmes. We normally expect applicants to have a Masters degree (or equivalent experience) in a relevant subject area, and are particularly interested in supervising students whose research areas overlap with or complement those listed below.

Staff are happy to discuss research projects in advance of a formal application. In the first instance, please contact the Postgraduate Admissions Tutor, who will put you in touch with the colleague(s) with whom you have expressed an interest in working.

Research interests

Staff specialisms range widely, stretching back from the present to the Middle Ages, and encompassing popular/commercial musics, film music, world musics, and music of the Western tradition. Research groupings also centre on Britain, Eastern Europe, the Americas, South and East Asia, and the 'long' 19th century.

Our research methodologies cover:

- the social, political and institutional history of music (Geoffrey Baker, Rachel Beckles Willson, Mark Berry, Julie Brown, Helen Deeming, Katharine Ellis, Julian Johnson, Erik Levi, Paul Harper-Scott, Anna Morcom, Tina Ramnarine, Stephen Rose)
- ethnomusicology – especially Latin America, the Caribbean, Northern Europe, India and Tibet (Geoffrey Baker, Anna Morcom, Tina K. Ramnarine, Henry Stobart, Shzr Ee Tan)
- historiography; reception history; aesthetics (Geoffrey Baker, Rachel Beckles Willson, Mark Berry, Julie Brown, Helen Deeming, Katharine Ellis, Julian Johnson, Erik Levi, Paul Harper-Scott, Stephen Rose)
- editing and philology (Julie Brown, Helen Deeming)
- composition – acoustic and studio (Mark Bowden, Brian Lock, Larry Goves, Helen Grime)
- performance and performance studies (Rachel Beckles Willson, Erik Levi, Tina K. Ramnarine, Henry Stobart)
- film and media studies (Julie Brown, Shzr Ee Tan, Brian Lock, Anna Morcom)

Our research community also includes postdoctoral research fellows and honorary research staff whose work complements that of our permanent staff. We are involved in the support of research activity at all levels, regularly hosting international conferences, workshops and study days on the main campus and in central London.



“By choosing Royal Holloway I have benefited from studying among top researchers in my field and sharing their interesting worldview. The beautiful campus and immense cultural network offered by the University of London is an additional worthy plus.”

Ananay Aguilar, PhD student

Research facilities and partners

The Department has a very well stocked Music Library, an IT suite with round-the-clock access for postgraduate students, a large number of practice rooms and a small recital room. Composers benefit from our industry-standard suite of studios for film/television composition, and Performance Studies students from a Disklavier.

Our partnership networks are international. We have collaborative research activities with other major institutions in the UK and continental Europe. In addition, we are home to major musicological journals (eg Plainsong and Medieval Music); the UK side of bibliographical projects that underpin the work of musicologists worldwide (RISM, RILM); and we are part of the AHRC Research Centre for Musical Performance as Creative Practice (CMPCP), a collaborating institution with the University of Cambridge, King's College London, and the University of Oxford.

Career prospects

In recent years graduates have entered into many interesting careers. Several of our research students have graduated to full-time academic posts; others are active in performance and composition, the media, and teaching. One student is a conductor and Professor of Composition at the Guildhall School of Music and Drama. Another student was published by Ricordi and played by the London Sinfonietta, as well as other major groups. Tansy Davies, another former student at Royal Holloway, has been commissioned by the London Symphony Orchestra, the Aldeburgh Festival for the London Sinfonietta, and by the BBC for Mark O'Keefe and the BBC Scottish Symphony Orchestra.



At a Glance

Programmes

MMus Advanced Musical Studies
MPhil and PhD by research

Number of places

No fixed number

Fees and financial advice

See Funding your studies on page 90

How to apply

See Admissions process on page 94

Contact details

Dr Anna Morcom
Postgraduate Admissions Tutor
T:+44(0)1784 414451
anna.morcom@rhul.ac.uk

Professor Julian Johnson
Head of Department
T: +44 (0)1784 443534
julian.johnson@rhul.ac.uk

Mrs Nanette Elias
Postgraduate Admin Assistant
T: +44 (0)1784 443540
nanette.elias@rhul.ac.uk

The 2008 UK Research Assessment Exercise confirmed the high international research standing of Physics at Royal Holloway.

Profile

Our research strengths range from explorations of the fundamental properties of matter at the lowest temperatures and on nanometre scales to elementary particles at the highest attainable energies. Experimental research is carried out in the Department's Tolansky and Wilson Laboratories, and at major international centres, including CERN and the Harwell Campus.

The two largest research areas are in the Centres for Particle Physics and Condensed Matter Physics.

The research is generously supported by the Engineering and Physical Sciences Research Council (EPSRC), by the Science and Technology Facilities Council (STFC), by the European Commission, the Royal Society, the National Physical Laboratory, CERN, the European Spallation Source, SNOLAB, and by industry. Much of the research is carried out in collaboration with other universities in Europe and worldwide, creating a vibrant international atmosphere in the Department.

Taught programmes

Euromasters in Physics

Two year MSc (120 ECTS) are offered by Royal Holloway as part of its South East Physics Network Partnership. The first year consists mainly of taught courses in the University of London; the second research year can be at Royal Holloway or the Universities of Kent, Queen Mary, Southampton, Surrey and Sussex. A limited number of financial support packages are open to students from the EU.

MSc Physics by Research

Main campus; FT/PT; 12/24 months

Available in any research area, this programme is 75 percent project-based and provides a stand-alone qualification, or foundation for a subsequent PhD degree.

MSc Nanotechnology & Low Temperature Physics

Main campus; FT/PT; 12/24 months

Supported by Oxford Instruments plc and the National Physical Laboratory. This MSc programme offers excellent training for careers in universities and industry, especially in scientific instrumentation.

Research opportunities

Applications are invited for postgraduate research places leading to the PhD degree in any of the Department's research areas. Applicants should have, or expect to be awarded, either:

- a First or Upper Second Class Honours (2:1) degree in Physics, or closely related subject, from a UK university or equivalent from elsewhere; students graduating after the introduction of the four-year degree (MSci or MPhys) in the UK are normally required to have this degree or a Masters degree (MSc) in Physics, or in a closely related subject
- applicants whose first language is not English are required to present evidence of competence either with a TOEFL score of 570 (230 in the computer-based test) or an IELTS grade of 6.5. UK and EU postgraduate students can be funded by research council awards or by College studentships. International students may be funded by College studentships and funding from a variety of external sponsors.

Research interests

Centre for Particle Physics

Current work is focused on four areas. At CERN, the ATLAS experiment is collecting data from the interactions produced by the Large Hadron Collider (LHC). One of the main goals is to detect the Higgs boson, which is believed to explain the origin of mass. Research is being conducted into new physics searches, such as supersymmetry and extra dimensions, as well as studies of the top quark. Work is also being carried out on the particle physics grid. The second area is centred on the physics of cutting edge particle accelerators, both for particle physics experiments including the LHC, and for light sources and neutron spectroscopy experiments. This work is being pursued in the John Adams Institute for Accelerator Science, a joint initiative between Royal Holloway, Oxford University, and Imperial College. Activities here include developing nanometer precision beam position monitors, RF simulation of accelerating cavities for the European Spallation Source, laser-wire systems for measurement of the properties of particle nanobeams, and advanced beam simulation for the LHC and its proposed luminosity upgrade. The third area of research is searching for dark matter with the DEAP/CLEAN and DMTPC direct detection experiments, located at underground laboratories in Canada and the United States respectively. A major goal of this activity is developing beyond state-of-art instrumentation for the next generation of dark matter searches in a new laboratory on campus.



"I have been working with my supervisor to search for new physics beyond the standard model, presenting results around the world at famous institutes like Fermilab and CERN. Being surrounded by leading researchers and other graduate students in a relaxed collaborative atmosphere is great; this helped me produce work that is now in published ATLAS papers."

Daniel Hayden, PhD in Particle Physics

Our fourth major activity is research in particle physics theory and phenomenology focuses on the search for new physics at the Large Hadron Collider (LHC) and the study of dark matter in the universe.

Centre for Condensed Matter Physics

In the London Low Temperature Laboratory we study the emergent properties of Helium, which is a model quantum system. Research projects are available in our MilliKelvin Laboratory on 2D quantum fluids and solids, solid ³He and helium clusters, NMR using SQUIDS and current sensing noise thermometry. In the Quantum Matter Group we use neutron and synchrotron X-ray scattering at the nearby ISIS and Diamond facilities to study strongly correlated electron systems, and these provide an ideal test bed for theory. In our labs we study quantum criticality, superconductivity and thermoelectricity. PhD studentships are available in the recently established NEXT Doctoral Training Centre with colleagues from UCL and the Harwell Campus. The Hubbard Theory Institute offers strongly correlated theory projects in frustrated magnetism, mesoscopic superconductivity, and cold atoms. Projects available in the Nanophysics and Nanotechnology Group include exploration of metallic nanostructures; superconducting nanocircuits for quantum computation; study of spin-polarized electric currents; design of nanometre-scale devices; techniques for fabricating multilayer multicomponent nanostructures and creating very finely collimated beams of synchrotron X-rays; electrical and thermal properties of quantum wires fabricated out of GaAs. In the Experimental Quantum Computation Group we perform feasibility studies for a quantum computer, and we have projects to study 2D electrons on liquid helium, and quantum computing with 2D electrons.

Research facilities and partners

Major facilities in the Department include the University of London Low Temperature Laboratory and Ultra-low Temperature Facility; the Nanotechnology Laboratory and Clean Room; the Materials Discovery Laboratory; data analysis and extensive computer networking facilities; Accelerator Physics Laboratory, Dark Matter Laboratory, and High Power Laser Facility.

Collaborative research is carried out at many major international centres, including CERN (Geneva), Stanford (California), ILL (Grenoble), ESRF (Grenoble), CEA Saclay (Paris), HZB (Berlin), FRMII (Munich), DESY (Hamburg), KEK (Tsukuba), ESS (Lund), SNOLAB (Canada), WIPP (USA) as well as ISIS and Diamond on the nearby Harwell Campus. Industrial collaborators include Oxford Instruments and the National Physical Laboratory.

At a Glance

Programmes

Euromasters in Physics
MSc Nanotechnology & Low Temperature Physics
MSc Physics by Research
MPhil/PhD Physics

Number of places

MSc: up to 15
MPhil/PhD: around 10

Fees and financial advice

See Funding your studies on page 90

How to apply

See Admissions process on page 94

Contact details

Professor Jon Goff
Director of Graduate Studies
T: +44 (0)1784 443485
F: +44 (0)1784 472794
jon.goff@rhul.ac.uk

Professor Grahame Blair
Head of Department
T: +44 (0)1784 443513
F: +44 (0)1784 472794
g.blair@rhul.ac.uk

Postgraduate Administrator
T: +44 (0)1784 276265
F: +44 (0)1784 472794
physics@rhul.ac.uk

Career prospects

Some MSc graduates embark on a PhD while others use the qualification to obtain positions which they would have been unable to gain with their first degree alone. Many PhD graduates continue in Physics associated research, either in academic or commercial laboratories. Others enter financial institutions or other areas involving computers and communications. Two recent graduates have gone into scientific publishing.

Politics & International Relations

Faculty of Arts & Social Sciences

www.rhul.ac.uk/Politics-and-IR/

Established in 2004, the Department of Politics and International Relations is now a well established centre for outstanding teaching and research.

Profile

Led by internationally renowned academics, our stimulating taught and research degrees are informed by our cutting-edge research, which is spearheaded by four vibrant research units: the Centre for European Politics; the Centre for Global and Transnational Politics; the Contemporary Political Theory Research Group; and the New Political Communication Unit.

There are currently 18 permanent academic staff, a number of visiting staff, and more than 30 research students in the Department. We are part of the ESRC Doctoral Training Centre for the South East, and through this have additional +3 and CASE recognition.

In 2008 Royal Holloway submitted its first ever return to the Politics and International Studies panel of the Research Assessment Exercise. Overall, 70 percent of the Department's research publications were judged to be in the top three categories, ranging from 'internationally excellent' to 'world-leading' in terms of their 'originality, significance and rigour.' The Department's results ranked it joint ninth in the country among departments of Politics with fewer than 20 researchers, and joint second among those with fewer than 15.

Taught programmes

The Department's Masters programme consists of a wide range of streams. All are also offered at Postgraduate Diploma level and can be studied on a part-time or full-time basis. Each stream consists of core courses, stream options, a generous choice of free options, and a 10-12,000 word supervised dissertation. Students graduate with an MSc bearing the title of their chosen stream.

MSc/Diploma in Democracy, Politics & Governance

Main campus; FT; 9/12 months; PT; 20/24 months

Contemporary political science focusing on democratic theory and practice, political institutions, public policy.

MSc/Diploma in European Politics

Main campus; FT; 9/12 months; PT; 20/24 months

Advanced analysis of European politics, and interaction between national and EU politics.

MSc/Diploma in Global Politics

Main campus; FT; 9/12 months; PT; 20/24 months

Dynamics of globalisation; development of global political issues.

MSc/Diploma in International Relations

Main campus; FT; 9/12 months; PT; 20/24 months

Advanced grounding in key issues in international relations and transnational politics.

MSc/Diploma in International Relations Theory

Main campus; FT; 9/12 months; PT; 20/24 months

Theoretical aspects of international relations with an emphasis on sovereignty, rights and global political economy.

MSc/Diploma in New Political Communication

Main campus; FT; 9/12 months; PT; 20/24 months

Politics of new media and communication technologies and their impact on political institutions, behaviour and public policy.

MSc/Diploma in Political Theory

Main campus; FT; 9/12 months; PT; 20/24 months

Advanced grounding in contemporary political theory.

MSc/Diploma in Transnational Security Studies

Main campus; FT; 9/12 months; PT; 20/24 months

Security Studies; understanding transnational dynamics of security; actors, institutions and concepts of security.

Note: not all streams are guaranteed to be available every year.

Research opportunities

The Department has a vibrant research culture and we welcome applicants who wish to study for an MPhil/PhD and whose proposed research matches our areas of expertise. If you already know the name of the person with whom you are interested in working, please email them to discuss your research plans. Further information can be found on our website.

Research interests

- **Dr Nicholas Allen:** British politics, with particular focus on political integrity and ethics regulation, mass and elite political behaviour, the British constitution and the British prime ministership.
- **Dr Michael Bacon:** Contemporary political theory, political liberalism, pragmatism, and theories of democracy.
- **Dr Giacomo Benedetto:** The European Parliament, comparative legislative politics, and political parties.
- **Dr Stephanie Carvin:** International law, international organisations, the Cold War and the 'war on terror'.
- **Professor Andrew Chadwick:** The internet's impact on political mobilisation, e-government, e-democracy, internet governance and regulation.
- **Dr Antara Datta:** South Asian history and politics; histories of mass violence, migration, nationalism and human rights; the subjectivity of minorities and changing notions of citizenship in south Asia.



“My choice to apply here was driven by the Department’s expertise, ability to effectively supervise my research, and friendly and welcoming nature.”

**Dr Nick Anstead, PhD student 2005-09,
Lecturer in Media and Communications
at the London School of Economics**

- **Dr Julia Gallagher:** African politics, British foreign policy, and normative international relations theory.
- **Dr Evelyn Goh:** Asian security, US-China relations, US foreign policy, and international relations theory.
- **Dr Oliver Heath:** Political choice and party system change in second wave democracies, turnout and political participation in Britain, quantitative methods.
- **Professor Sandra Halperin:** Global development, the causes and conditions of war and peace, Middle East politics.
- **Dr Yasmin Khan:** Postcolonial history of India and Pakistan, secularism, ethnic violence, democratisation and decolonisation.
- **Dr John Mattausch:** Ethnicity, the relations between different ethnic groups in contemporary British society.
- **Dr Alister Miskimmon:** German foreign policy, European and global security issues.
- **Dr Ben O’Loughlin:** International political communication, media, war, new security challenges and conflict, internet politics.
- **Mrs Doethe Rosenow:** International relations theory (particularly drawing on French philosophy); poststructuralism; theories of political resistance.
- **Professor Chris Rumford:** The transformation of contemporary Europe, borders and political spaces, cosmopolitanism.
- **Dr Jonathan Seglow:** Contemporary political theory, multiculturalism, and the politics of recognition.
- **Dr James Sloam:** German and European social democracy, youth participation in democracy.
- **Dr Nathan Widder:** History of Western political thought, contemporary Continental philosophy, questions of difference, pluralism, power, and identity.
- **Dr Michael Williams:** New security challenges and risks, the influence of culture on foreign policy, security cooperation, transatlantic relations, US Foreign Policy.

Research facilities

All postgraduates have access to central computing facilities. Doctoral students also have their own computer rooms with networked computers within the department. In addition to the substantial library collections on campus, postgraduates also have access to other libraries of the University of London, including Senate House and the London School of Economics.

Career prospects

In recent years graduates have entered into many interesting careers, including working in politics, the media, public management, law, the European Union and the diplomatic service. Former PhD students now have teaching and research positions at Birmingham University, Edinburgh University, the London School of Economics, and Sydney University.

At a Glance

Programmes

MSc/Diploma in Democracy,
Politics & Governance
MSc/Diploma in European Politics
MSc/Diploma in Global Politics
MSc/Diploma in International Relations
MSc/Diploma in International Relations Theory
MSc/Diploma in New Political Communication
MSc/Diploma in Political Theory
MSc/Diploma in Transnational Security Studies
MPhil/PhD

Number of places Flexible

Fees and financial advice

For information about scholarships, some of which are available each year, contact Lisa Dacunha. See also Funding your studies on page 90

How to apply

To request an application form contact Lisa Dacunha. See also Admissions process on page 94

Contact details

PIR Departmental Office:
+44 (0)1784 443687
Dr Michael Bacon, MSc Coordinator (Politics)
Michael.Bacon@rhul.ac.uk
Dr Stephanie Carvin, MSc Coordinator
(International Relations)
Stephanie.Carvin@rhul.ac.uk
Dr Alister Miskimmon,
Director of Graduate Study
(responsible for MPhil/PhD students)
Alister.Miskimmon@rhul.ac.uk
Dr Nathan Widder, Head of Department
N.E.Widder@rhul.ac.uk
Lisa Dacunha, Postgraduate
and Research Administrator
Lisa.Dacunha@rhul.ac.uk

The Psychology Department is a vibrant research community with an international reputation for leading research across a range of fields. We are an international centre for excellence in research, ranked in the top 10 in the UK Research Assessment Exercise 2008, and 7th (out of 75) by the *Times* and *Guardian* for research quality. The Department has a dynamic and varied research base that covers areas including neuroscience and clinical, developmental, cognitive, health and social psychology.

Profile

The Department provides a lively and stimulating intellectual environment. Research is organised into three very active (partly overlapping) research groups: the Clinical, Health and Social (CHS) group; the Adult and Child Cognition (ACC) group; and the Brain and Behaviour (BAB) group. Within these groups, we have academic staff working in a wide range of areas including language, vision, neuroscience, social, clinical and developmental psychology. Research groups have frequent seminars in which members present their most recent findings, discuss other research and develop their ideas and plans for the future. Research groups also organise seminars with invited external speakers.

Research funding comes from Research Councils (such as BBSRC and ESRC), charities (such as the British Diabetic Association and Fight for Sight), industrial investors and companies, academic trusts (such as the Wellcome and Leverhulme Trusts), healthcare companies, hospitals, government departments, and the European Union.

Taught programmes

MSc Applied Social Psychology

Main campus; FT/PT; 12 months

This course is designed to equip students with knowledge about cutting-edge developments and issues in applied social psychology, as well as an array of analytical, methodological, and statistical research skills, important for a PhD as well as for jobs in applies settings in commercial and governmental organizations.

MSc/Certificate/Diploma in Cognitive Behavioural Therapy (CBT) and Improving Access to Psychological Therapies (IAPT)

Programme, based at 7a Woodfield Road, London W9 2NW.

The CBT course is PT 18 months. It is a multidisciplinary course, in collaboration with the Central and Northwest London Mental Health NHS Trust, aimed at NHS staff from the mental health and allied professions who have the need to use CBT in their everyday work. A suitable qualification in

a mental health field or equivalent professional experience, and at least one year of post qualification experience in mental health work, are required. The IAPT course is FT 12 months. Further information on both courses is available from www.nwlcbbtraining.net, the Course Administrator, ursula.barbieri@nhs.net (020 7266 9580) or Programme Director, michael.worrell@nhs.net (020 7266 9588).

Doctorate in Clinical Psychology Main campus; FT; three years

A course to qualify Clinical Psychologists for practice in the NHS. Places are funded through the NHS London – there is currently no provision for self-funded students. More information about Clinical Psychology courses is available from The Clearing House for Clinical Psychology website:

www.leeds.ac.uk/chpccp/

Please visit our website for further information.

Research opportunities

Applications are invited for postgraduate research places leading to the PhD degree. Applicants should have, or expect to be awarded, the equivalent of an honours degree from a British university, where students will normally have achieved at least the standard of an Upper Second Class Honours (2:1) degree. Students with a non-Psychology degree may also apply but should be able to demonstrate some skills in research methods appropriate to their proposed programme of research, which will usually place an emphasis on adequate experimental and statistical knowledge.

Accepted applicants can apply for studentships (Royal Holloway Reid, Thomas Holloway or ESRC). We prefer applicants to discuss possible research topics with a potential supervisor on an informal basis before submitting a formal application. Staff details can be found on our website.

“I have enjoyed the MSc Human Neuroscience course. I gained a firm background in neuroscience and research methods (TMS, EEG, MEG and fMRI) aided by enthusiastic researchers. I also gained first-hand experience in a research project using fMRI data. This course provided me with great preparation for a research career.”

Robin Green, MSc Human Neuroscience

Research interests

The Department has active research programmes in the following areas:

- **Brain and Behaviour** (Systems neuroscience): Visual perception (motion perception, spatial vision and studies on disorders of the visual system), eye movements, the cognitive control of action, the neurobiology of social cognition, decision-making, reward, attention, motor control. We have extensive expertise in the acquisition and analysis of fMRI data.
- **Cognitive Psychology:** Language processing, mathematical cognition, memory, attention, information processing in healthy and clinical populations.
- **Developmental Psychology:** Children’s conversation, race and gender, and how children learn through talk with their peers; the role of peer relations and brain lateralisation in children’s development of an understanding of emotions, and of self-presentational tactics; children with Specific Language Impairment (SLI); cognitive abilities in infancy, such as mental representation of objects, as reflected in infants’ reaching and looking behaviour.
- **Social Psychology:** Inter-group relations and social identity, values, cross-cultural psychology, acculturation, donation behaviour, social cognitions in relation to mental illness, moral reasoning and development of social identity.
- **Clinical Psychology:** Social and cognitive factors in anxiety and depression, eating disorders, post-traumatic stress disorder, role of early experience, recovered memories, process and outcome in psychotherapy, religious issues in clinical work, human conditioning and phobias.
- **Neuropsychology:** Language disorders in adults and children, developmental and acquired dyslexia, specific language impairment, effect of dementia on the breakdown of language and semantic memory.
- **Health Psychology:** Measurement of quality of life, other patient reported outcomes and psychological processes in diabetes, renal failure, growth hormone deficiency, hypothyroidism, HIV infection, retinopathy and macular degeneration, chronic neurological illnesses, cognitive biases in pain patients, depression and pain, and the application of health psychology to evaluation of treatment interventions

(turn to page 84)



Research facilities and partners

A wide range of equipment is available. This includes extensive computing facilities, a test library of psychometric instruments, and observation and infant-testing laboratories. The Department also houses a research-dedicated 3T MR scanner for brain imaging, and has dedicated digital graphics display and transcranial magnetic stimulation (TMS) equipment, electroencephalography (EEG) equipment, eye-movement recording equipment, an electropalatograph for the analysis of articulatory movements, and equipment for accurate measurement of reaching and grasping movements. These facilities are housed in a set of dedicated laboratories.

Excellent links underpin departmental research. These include local hospitals, schools, social services, industrial sponsors, charities and international institutes. A high level of interaction also exists with the other colleges of the University of London and with the universities in the surrounding area. There are numerous collaborations with other first-rate research-led universities. Students are encouraged to make use of existing and new international contacts as part of their studies.

Career prospects

In recent years Psychology graduates have entered into many interesting careers, including: Clinical Psychologist in the NHS; Production Assistant at Discovery Networks International; Research Clinical Psychologist at the Wellcome Trust; and various university research and academic positions.

“I completed a BSc in Psychology at Royal Holloway in 2004. Following this, I decided to stay on at the Department to pursue a PhD in childhood immunisation. This research developed as an extension of my undergraduate dissertation. Throughout my PhD, I received considerable support and advice from my two supervisors, other members of the Psychology Department and fellow PhD students. The Department has an excellent reputation for top class research in a wide range of fields. I was impressed by the thriving research community, which is increasing in size each year. In addition, there are many opportunities to get involved in teaching, such as giving lectures to psychology undergraduates and running weekly tutorial sessions. Over the course of my PhD, I was also encouraged to present my work at a number of conferences and seek to publish papers. I successfully defended my thesis in August 2008. Although I miss the Department, my PhD proved to be an excellent springboard for me to pursue my chosen career in public health. I am now working as a Specialty Registrar in Public Health at Devon Primary Care Trust.”

Sarah Tickner, PhD (Health Psychology)

At a Glance

Programmes

Doctorate in Clinical Psychology (26)
MSc/Certificate/Diploma in Cognitive
Behavioural Therapy (20)
MSc Applied Social Psychology (15)
MPhil/PhD (no limit)

Number of places as listed in brackets

Fees and financial advice

See Funding your studies on page 90

How to apply

See Admissions process on page 94

Contact details

Professor Tamar Pincus
Director of Graduate Studies
(research PhD enquiries)
T: +44 (0)1784 443523
F: +44 (0)1784 434347
t.pincus@rhul.ac.uk

Professor John Wann
Head of Department
T: +44 (0)1784 443528
F: +44 (0)1784 434347
PSY-postgrad@rhul.ac.uk

Miss Carol Blackman
Postgraduate Administrator
(all postgraduate enquiries)
T: +44 (0)1784 443528
F: +44 (0)1784 434347
PSY-postgrad@rhul.ac.uk



Social Work

Faculty of Arts & Social Sciences

www.rhul.ac.uk/socialwork/

The entire range of research and teaching within the department derives from the key objective of ensuring that contemporary social work and health policy and practice can be informed at every level by a sound knowledge and value base. We are committed to developing critically reflective practitioners who can provide effective social work provision for the most vulnerable in our society within an anti oppressive framework.

Profile

We undertake a wide variety of commissioned research in the national and international social work and health arena. This underpins our taught courses for all our students. We develop and support research-literate practitioners and policy/practice-literate researchers and break down traditional barriers between these groups at every level of departmental activity from PhD registrations to short CPD courses. Our students come from a variety of backgrounds and we welcome applications from international students.

In the 2008 Research Assessment Exercise the Department had outputs assessed as 'internationally excellent quality with world-leading quality across health and social care. Research income was also assessed as 'excellent' from a range of funders.

Taught programmes

MSc in Social Work

Main campus; FT; 24 months

This MSc programme leads to the professional qualification awarded by the General Social Care Council. It runs in close partnership with local agencies based in inner and outer London boroughs and combines class based academic and practice oriented teaching with two field work placements. In addition to the College's standard entry requirements for a higher degree, applicants should have obtained a GCSE grade C, or equivalent, in English and Maths, and have at least six months full-time or 12 months part-time social work related experience at the point of application. We welcome international, employment-sponsored and self-funded students.

MSc in Advanced Practice (with Advanced Award in Social Work – Children & Families or Leadership & Management) Bedford Sq, Central London; PT; 3 – 5 years

This MSc programme builds upon the long standing partnerships that the department has with employer agencies and service user groups. The programme is delivered via a part-time modular approach which offers flexibility to suit the needs of social workers wishing

to continue their professional development. It provides professionally and academically rigorous post graduate training for experienced workers in social care and health services, and will lead to academic and professional qualifications at Masters and Advanced levels. Students are able to exit at different stages throughout the programme eg at Post Graduate Certificate or Post Graduate Diploma levels. Options courses include Working with Children with Sexually Harmful Behaviours (with NSPCC); Advanced Practice in Public Law Family Court Proceedings; and Supervision of Professional Practice. We welcome international, employment-sponsored and self-funded students.

Doctorate in Professional Studies (Health & Social Care)

Bedford Sq, Central London; PT; 6 years

The Professional Doctorate programme has been developed as part of the SWan partnership with St George's, University of London and Kingston University. It is a six year part time programme and will equip practicing health and social care professionals with leadership skills appropriate to their particular field. The focus of the programme is interprofessional work. The approach is critical and reflexive and is underpinned by social science perspectives. The programme will enable health and social care professionals to advance professionally by undertaking original research and implementing advanced practice. We welcome international, employment-sponsored and self-funded students.

Research opportunities

MPhil/PhD Programme

The Department has an MPhil/PhD programme. Current students are researching topics that include Attachment Theory; Race and Mental Health; Interprofessional Practice in Child Protection; Anti-Oppressive Social Work Practice; and Migration of Social Work Professionals to the UK. A number of our current PhD students have grants awarded through the College's awards and South West London Academic Network (SWan) awards with St George's, University of London. For a full list of PhD theses, please visit our website.

The Department additionally provides a range of research opportunities relating to social work education; social work in areas of workforce development; children and families work; mental health; 'race' and ethnicity; decision making and the use of knowledge in social work.

“I chose Royal Holloway because it embraced diversity with its teaching at the forefront of research and development. The placements offered were of high quality due to the College’s strong links with various local authorities.”

MSc in Social Work student

Career prospects

The MSc in Social Work qualifies graduates for careers in statutory and voluntary social work. Qualified social workers can continue their professional/academic development through taught post-qualifying programmes or research opportunities within the Department, eg the MSc in Advanced Practice. Our Masters programmes are a solid basis for further academic research and training such as a PhD or Professional Doctorate.



At a Glance

Programmes

MSc Social Work

MSc in Advanced Practice (Children and Families/ Leadership and Management)

MPhil/PhD, Doctorate in Professional Studies (Health and Social Care)

Number of places Variable

Fees and financial advice

See Funding your studies on page 90

MSc Social Work students are entitled to apply for an NHS Bursary to assist them financially during their studies:

www.ppa.org.uk/swb

How to apply

MSc Social Work: contact UCAS or apply direct via **www.rhul.ac.uk**

All other programmes contact:

Liz Hudson on l.hudson@rhul.ac.uk

See Admissions process on page 94

Contact details

Anna Gupta

Head of Department

T: +44 (0)1784 443144

F: +44 (0)1784 276541

a.gupta@rhul.ac.uk

Lynn Walsh

Postgraduate & Admissions Administrator

T: +44 (0)1784 443681

F: +44 (0)1784 276541

lynn.walsh@rhul.ac.uk

Liz Hudson

Business Development Manager

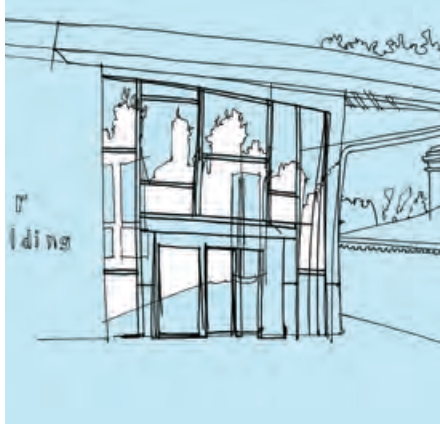
(for MSc in Advanced Practice & Doctorate in Professional Studies)

T: +44(0)1784 443379

F: +44 (0)1784 276541

l.hudson@rhul.ac.uk





Applying to Royal Holloway 89–100



Funding your studies



There are no mandatory awards for postgraduate study, so prospective students need to be familiar with the associated costs and possible sources of financial support before applying. Here we provide a brief overview of the various financial considerations, from living expenses to tuition fees. We have also summarised a number of ways in which students are able to support their studies. For more detailed information please visit our website.

Living expenses

It is difficult to give a figure for the living costs likely to be incurred during a period of postgraduate study, since much depends on the individual's needs and lifestyle. However, we suggest that a postgraduate should think in terms of a minimum of £9,500 for a single person on campus per year to cover accommodation, food, personal expenses, study-related costs, and some limited travelling. International students will also need to take account of various settling-in expenses, including arrangements for travel to the United Kingdom, travel within the UK, visas and travel and health insurance.

Where does your money go?

We estimate a postgraduate student will spend approximately £9,500 per year in living expenses. This figure can be roughly broken down into:

- accommodation – £3,300 – £5,900 for a 12-month lease in a shared student residence or hall accommodation. Accommodation in the heart of London can be booked via the University of London and prices vary from £600 for a single to £1,500 for a 2-bed flat per month.

- transport – this depends on where you choose to live. From a residence in Staines it would cost approximately £10 a week to get to the Egham campus. For classes in London, a daily travel-card is required and you can purchase a student railcard which will give you a discount on off-peak travel. Some MA students have regular classes in London and virtually all research students need to use London libraries (some of which are non-lending) and visit London exhibitions and museums.
- food – you can expect to spend around £30 – £35 a week on basics, to which would be added occasional treats (a shop-made sandwich, a take-away, etc).
- social life – Students' Union tickets at Royal Holloway normally cost up to £5. Most students probably spend £20 a week on average.
- books – this depends on the field and type of study. Science books are more expensive than books in the humanities. Therefore it can be anything from £60 to £250 per year, with MA students usually towards the lower end of the scale and research students towards the top.

Tuition fees

Tuition fees cover all academic-related costs such as teaching and supervision, use of library and computing facilities, examinations (excluding re-sit examinations) and administration. Fee information will be included with offer letters. At the time of publication our fees for 2012-13 have not been set. Please visit our website for the latest information.



Sources of funding

Sources of funding

It is vital to investigate potential sources of funding for your postgraduate studies systematically and in good time. Most funding agencies and bodies operate strict deadlines and calls on their resources are usually very competitive. It is a good idea to contact the Director of Graduate Studies in your chosen academic department to discuss sources of funding and to have guidance in how to make applications.

These awards vary in the level of funding provided. Some cover both tuition fees and living expenses in full; others are partial awards that make a contribution towards a portion of the cost of study. In some cases a combination of funding is possible (eg Departmental Assistantships may be held with Research Scholarships). Departmental Assistantships require research students to support teaching, research or administrative duties in the department for up to six hours per week. Please note that only a few departments are at present offering assistantships.

Although Royal Holloway is fortunate in the range of funding available, competition for awards is very intense, and the majority of postgraduate students do not gain funding which covers both tuition fees and living expenses. It is therefore important to consider how to support your studies.

Below is a brief summary of the various ways in which students are able to support their studies but please do refer to our website for more detailed information.

The Research Councils

At present about 120 Royal Holloway students are supported by Research Council funding. These are the major sources of funding for UK postgraduate students, with scholarships covering fees and maintenance (EU students may be considered on a tuition fees-only basis). The Councils are:

- The Arts and Humanities Research Council (AHRC)
- Biotechnology and Biological Sciences Research Council (BBSRC)
- Economic and Social Research Council (ESRC)
- Engineering and Physical Science Research Council (EPSRC)
- Medical Research Council (MRC)
- Natural Environmental Research Council (NERC)
- Science and Technology Facility Council (STFC)

Background information about the Research Councils and their eligibility criteria is available on the RCUK website at: www.rcuk.ac.uk/

If you are unsure which Research Council is likely to offer funding for your subject area (and a number of departments

receive scholarships from more than one Council) then please contact the appropriate Director of Graduate Studies.

General Social Care Council (GSCC)

This is for the MSc in Social Work and the GSCC offers bursaries and pays tuition fees for home applicants. It also pays tuition fees only for EU applicants. Information is available from: GSCC, Bursaries, Goldings House, 2 Hay's Lane, London SE1 2HB; www.gsc.org.uk

Clearing House for Postgraduate Courses in Clinical Psychology

Applicants for the Doctorate in Clinical Psychology may obtain information about places funded through the NHS Regional Training Consortium from The Clearing House for Postgraduate Courses in Clinical Psychology's website: www.leeds.ac.uk/chpccp/

International awards

Financial support of varying levels for overseas students is available from a wide range of sources. Some of the most common schemes are as follows:

- British Council Fellowship Programme
- Commonwealth Scholarships and Fellowships
- Foreign and Commonwealth Office – Chevening Scholarships
- Technical Co-operation Training Programme

Details of these programmes, qualifying requirements and deadlines for application are provided on our website.

Other sources of funding

In addition to the sources of financial support mentioned previously, postgraduates have been able to secure funding from a number of other sources. Again, many of these are mentioned on our website but for students keen to explore all possible avenues here are some of the alternatives:

- charities and trusts
- employment (see page 18)
- loans (Career Development & Professional Studies Loans)
- employer sponsorship
- Access to Learning Funds (ALF): Limited funds available to Home Royal Holloway students to help with living costs only. Students can apply when they are registered on their postgraduate course.

For general financial advice please visit our website.



Admissions process

Before you apply

This Prospectus is intended to give an overview of the opportunities available. Before making an application for any postgraduate programme, we strongly advise you to consult more detailed sources of information such as departmental brochures and our website.

The Educational Support Office's *Handbook for Students with Special Needs* provides information about support available to applicants with disabilities, medical conditions or different learning skills such as dyslexia.

If, after reading the departmental materials, you require further information or have follow-up questions, you are welcome to contact the Director of Graduate Studies in the relevant department, the appropriate Programme Director, or the member of staff in whose area of research you are interested.

For more general advice, UK applicants should contact:
Admissions and UK Recruitment
T: +44 (0)1784 443399
F: +44 (0)1784 276381
liaison-office@rhul.ac.uk

International students should contact:
Royal Holloway International
RoyalHollowayInternational@rhul.ac.uk

International students may also find it useful to talk to university representatives visiting a country for the British Council and other higher education exhibitions and fairs; Royal Holloway's representatives at these events are always more than happy to help and advise whenever they can. You are also very welcome to visit the campus – we look forward to meeting you.

Making an application

Applying online

All direct applications for postgraduate programmes should now be made online through our online application service "Embark".

All you need to do is logon to the online application site and register your details. You will then have access to the online Royal Holloway application form to which you can attach your CV, covering letter, research proposal or any other documents you feel would help in processing your form. You can also request your references online.

There are added benefits to applying online. Once you start work on an application it is saved for you, so you can go back as many times as you like to change or enter new



data before you submit your application. All the latest news and application deadlines are posted on the web, so each time you login to your application you get the latest news brought right to you.

Complete applications should include the following:

- two confidential references submitted online by the referees
- a copy of the degree certificate or a transcript of the degree studies to date
- copies of any documentation declared in support of a home/EU fee status claim, eg Home Office letters, passports showing citizenship and stamps/vignettes, etc
- candidates applying to the Departments of Drama & Theatre, English, Media Arts or Music are asked to submit two pieces of written work (other departments may also ask for written work)

To apply online go to: www.rhul.ac.uk/registry/Admissions/applyonline.html

Application Status Checker

Once you have submitted your application you can monitor its progress online through the Application Status Checker. Not only can you monitor your application status, but also the outcome of your application for college accommodation in one of our halls of residence. Later on in the cycle you will be able to use the same service to monitor your enrolment status with the College through the Student Status Checker.

To use the service go to the college portal at: <http://portal.rhul.ac.uk>, where you will be required to enter your student number (often referred to as your Royal Holloway student number). You can then select the Application Status Checker by clicking on the link.

When to apply

The College does not have a formal deadline for applications. However, we recommend that applications are sent well in advance of the intended enrolment date to allow good time for the various arrangements that need to be made between the receipt of application forms and the commencement of study. Some of our taught degrees will also be fully subscribed by the summer months and unable to consider applications by this time.

With the exception of a few MPhil/PhD programmes, all our students commence their studies at the start of the academic year in late September. We therefore advise that your application reaches us by 31 May. Applicants who wish to be considered for Research Council, AHRC, Overseas Research Student awards or College Studentships and Scholarships are advised to check the deadline for the competition with each individual body, as deadline dates can vary.

Offers of admission

Departmental Directors of Graduate Studies will contact you if an interview is required, otherwise the Department will come to its decision by taking into account the information contained in the application form, references and other submissions (if appropriate).

Once a decision has been made, the Department informs the Admissions Office who will issue an offer letter. It is the letter from the Admissions Office which will contain your formal offer of a place. Certain conditions of admission may be set out – for example, the offer of a place may be conditional on you achieving a certain qualification, attaining a specified level of English language proficiency, or providing a statement of financial support. Candidates whose first language is not English are normally required to provide proof of their English language proficiency: we recommend the British Council IELTS test.

Some departments require a deposit of £400 as a means of accepting an offer. Currently, this is the process for taught programmes in Media Arts, Management and Drama & Theatre.

Decisions on your application will be made as quickly as possible. However, if you are concerned about your application please contact:

Admissions Office
T: +44 (0)1784 443355
F: +44 (0)1784 473662
admissions@rhul.ac.uk



Entry qualifications

It is a condition of registration that you must have satisfied the College's general entrance requirements as well as any requirements stipulated by the Department to which you have applied. All qualifications required as part of an offer of admission will be verified prior to entry. The following is intended as a guide only:

Postgraduate Diplomas

The entry requirements for a Diploma depend on the programme; you should refer to the individual course details for specific requirements.

Masters degrees

For a Masters degree (MA, MMus, MBA, MSc) the minimum requirement is the equivalent of a UK Second Class Honours degree, usually in a subject appropriate to the programme you wish to follow. For some programmes the requirement is an Upper Second Class Honours (2:1) degree and for others – for example the MBA in International Management – there may be a GMAT and work experience requirement.

Research degrees

The minimum entry requirement for an MPhil or an MPhil leading to a PhD degree is the equivalent of a UK Upper Second Class Honours (2:1) degree in an appropriate subject, although in many cases a Masters level qualification will also be expected.

Non-standard qualifications

Applications from candidates with non-standard qualifications or qualifications in a different subject area are assessed individually. If a department feels that your qualifications and experience are an adequate preparation for the degree you wish to take, the Dean of Faculty may grant a waiver of the entry regulations to permit admission. It may take a little longer to reach a decision on your application in such cases.

International applications

The College recognises qualifications from around the world. As an international student there are two standard entry requirements you must meet for all programmes in order to study at Royal Holloway: academic and English language entry requirements. For details of academic requirements for your country, please visit:

www.rhul.ac.uk/international/

There are additional requirements for some programmes. For example, English, Drama and Music require pieces of written work as part of the admissions process. The MBA programme requires a minimum of three years' work experience and may also require GMAT. However, the latter is decided on a case by case basis depending on the applicant's experience and academic background. Please see the relevant departmental web pages for subject specific entry requirements.

English language requirements

If you are applying to study at Royal Holloway and your first language is not English, evidence of your English language proficiency is required.

Royal Holloway accepts internationally recognised English language qualifications including IELTS, TOEFL, Cambridge ESOL and other equivalent qualifications. Postgraduate applicants whose first degree was taught in English should contact Admissions to check whether an English language qualification is still required. English language requirements vary by course, and in some cases departments may request students achieve a specific sub-score in the writing element of the English language test. A full list of IELTS and TOEFL requirements can be found on

www.rhul.ac.uk/international/programmesandapplying/englishlanguage requirements

Other English language qualifications are assessed on an individual basis. If you have taken an English language exam but do not currently meet the scores listed online, you may apply for the Pre-sessional English Language Programme (PELP) offered by Royal Holloway International. This programme offers intensive preparation in English Language and study skills for international students who have been offered a place to study at Royal Holloway. Students attend the programme for either four, eight or twelve weeks according to their English language qualifications.

Visit: www.rhul.ac.uk/international/



Terms and conditions of admission

A contract is formed between the College and you once you accept an offer of a place. The terms of this contract include the following and your acceptance of a place is subject to them:

You are required as a condition of enrolment to abide by, and submit to, the College's Statutes, Regulations and Rules, as amended from time to time by the Council or the Academic Board. These include, without prejudice to the generality of that statement, the academic regulations, arrangements for hearing appeals and grievances, codes of discipline, library and computing regulations and safety rules. These regulations can be found in our Student Handbook which is available online at: www.rhul.ac.uk/for-students/handbook/

Royal Holloway will use all reasonable endeavours to provide courses and programmes of study in accordance with the descriptions set out in this Prospectus. However, this Prospectus is produced at the earliest possible date to provide maximum assistance to intending applicants. It is inevitable that changes will occur between the date of printing and the start of the academic year to which it relates. Some changes may be due to resource constraints, others to staff changes or developments in the relevant subject. In particular, as the College does not provide education to UK and other European Union students on a commercial basis, but is largely dependent on charitable and public funds, it must manage its resources in a way which is efficient and cost effective. In the context of the provision of a diverse range of degree courses to a large number of students, the College therefore reserves the right to vary the content and delivery of courses, to discontinue, merge or combine courses, and to introduce new courses if such action is reasonably considered to be necessary by the College. Such changes may occur either before or after admission.

The College aims to offer flexibility within degree courses and within the relevant Regulations. However, while every student will be able to take appropriate courses in the programme for which he/she is registered, no timetable can guarantee that all options will be available to all students who are qualified to take them.

The College does not accept responsibility, and expressly excludes liability, for damage to or interference with students' property or intellectual property, other than through the negligence of the College, its staff or agents, or for the consequences of any modification or cancellation of courses as set out in the preceding paragraphs.



In the event that any term, condition or provision contained in this statement, in the Prospectus or elsewhere in the College's Statutes, Regulations or Rules shall be held to be invalid, unlawful or unenforceable to any extent, such term, condition or provision shall, to that extent, be severed from the contract between you and the College without affecting the remaining terms and conditions which shall continue to be valid to the fullest extent permitted by law.

Royal Holloway follows the provisions of the Data Protection Act 1998, in processing, by manual or electronic means, any data provided in connection with an application. Royal Holloway will use data provided by applicants to assess their applications. Data relating to applicants who, for any reason, are not admitted to the College will not be retained for more than five years from the start date of the programme of study applied for. That data may be used to provide statistics and management information but not in a form that will enable individuals to be identified.

Where to find us

By air

Heathrow Airport is about seven miles from the College and the journey is quickest by taxi. Taxis are available at the airport, but you should check the fare in advance; it is cheaper to telephone one of the local taxi services. Alternatively, take bus number 441 from Heathrow Central Bus Station to the College or bus number 71 from Terminal 5.

From Gatwick Airport, take the bus to Heathrow and follow the procedure above, or telephone for a taxi.

For information on flights and airport information, visit: www.baa.com

By taxi from Egham

There is a taxi rank at the station. Otherwise, turn right out of the station onto Station Road and there is a taxi office on the left, next to the Build Center. The fare is about £5.

Some local taxi firms include Area Cars (01784 471001), Egham Cars (01784 434646), Gemini Cars (01784 471111) and Windsor Cars (01753 677677).

By road

The College is on the A30, 19 miles from central London and about a mile south-west of the town of Egham. It is two miles from Junction 13 of the M25 (London Orbital).

Directions from the M25

- 1 After leaving the M25, follow the A30 west (signposted Bagshot and Camberley); this is the Egham by-pass
- 2 At the end of the Egham by-pass, continue on the A30 up Egham Hill (a petrol station is on your left)
- 3 The main College entrance is on the left immediately after the second footbridge

Directions from the west

- 1 From the west leave the M3 at Junction 3 north and follow the A30 towards Staines and London
- 2 Continue on the A30 past Wentworth Golf Course on your right and Virginia Water Lake on your left. Go straight through the first major set of traffic lights and you will see the Founder's Building and the main College campus on the right



One of Royal Holloway's great strengths is its excellent national and international communication links. By road, rail or air, Royal Holloway is easy to reach – this makes life easy at the beginning and at the end of term, when you want to return home or visit friends for a weekend, and for those who commute to the College.

By bus

The following buses stop outside the College: Travel Surrey 441 (Heathrow to Englefield Green) and First 71 (Heathrow to Slough). For local bus information, visit Surrey County Council's website: www.surreycc.gov.uk and select Roads and transport, Buses and trains.

There is also a College bus service, which runs between Egham railway station and the campus. The College bus, like the taxis, leaves from the main car park adjacent to the station.

By train

There are frequent services from London Waterloo to Egham (40 minutes); Reading to Egham (40 minutes); and Woking to Egham (35 minutes; change at Weybridge). Services at weekends, especially those on Sunday, are less frequent than on weekdays.

Train links to the rest of the country are available via the London stations or Reading. Eurostar services to mainland Europe also operate into and out of London.

For local train timetables, visit South West Trains' website: www.southwesttrains.co.uk

For national rail enquiries, visit: www.nationalrail.co.uk

On foot from Egham station

The College is about a mile from the station, approximately 20 minutes' walk.

Directions from Egham station

1. Turn right out of the station along Station Road and walk about 100 yards to the junction and the traffic lights
2. Turn left at the junction and follow the road to the large roundabout; go left up Egham Hill
3. The main College entrance is on the left immediately after the second footbridge

There is a slightly quicker route – but that is best tried once you are familiar with the area!

Bedford Square, Gower Street (central London)

Royal Holloway has a central London base at 2, Gower Street, WC1E 6DP. This recently restored Georgian townhouse is used as a venue for teaching and postgraduate activities.

Gower Street is within a two minute walk of the British Museum and the University of London Senate House. Nearest tube stations are Euston Square, Goodge Street, Russell Square and Tottenham Court Road – all within about five minutes' walk.





Campus plan



A more detailed guide to the practical nature of the College's accessible routes for the mobility impaired is available through the Educational Support Office (based in the Founders' Building)

Academic departments and centres

- Active and Bedford Centre 1 Founders' Building
- Biological Sciences 31, 34 Bourne & Wolfson Laboratories
- Classics & Philosophy 1 Founders' Building (west ground floor)
- Computer Science 17 McCrea Building
- Criminology & Sociology 16 Arts Building
- Drama & Theatre 74 Sutherland House and Lodge
- Earth Sciences 25, 14 Handa Noh Theatre, Boilerhouse Complex
- Economics 35, 36, 36a Horton Building
- English 20 Horton Building (upper floor)
- European Studies 15 International Building
- Geography 1 Founders' Building (west first floor)
- Hellenic Institute 35, 36, 36a Queen's Building & Annexe
- History 15 International Building
- Management 17 McCrea Building
- 12, 13, 1 Moore's Building (east first floor)
- Mathematics 17 McCrea Building
- Media Arts 11 Williams Building & Arts Building (ground floor)
- Modern Languages 15 International Building
- French 15 International Building
- German 15 International Building
- Hispanic Studies 15 International Building
- Italian 15 International Building
- Music 62, 65 Wotton's Terrace
- Physics 21, 22 Tolansky & Wilson Laboratories
- Politics & International Relations 1 Founders' Building (west first floor)
- Psychology 34, 30 Wolfson Laboratory, Bourne Annexe
- Royal Holloway International 15 International Building
- Social Work 16 Arts Building

Facilities and services

- Bedford Library 27
- Boilerhouse 14
- Boracic Supply Unit 70
- Café Jules 15
- Careers Service 20
- Chapel 1b
- College Administration 1, 51
- Computer Centre 10
- Crossroads 1
- Crossroads Bungalow 1
- Incorporating College Bookshop 4
- Electron Microscopy Unit 37
- Enterprise Centre, Orchard Building 24
- Estates Workshop 26
- Founders' Library 1
- Garden Lodge, music practice 8
- Health Centre 1
- Humersdale 51
- Jane Holloway Lecture Hall 50
- Laundry, Muslim Prayer Room 5
- Library Depository 39
- Little Echoes Day Nursery 64
- Main Lecture Theatre 1
- Medicine & Stumble Inn 45
- Munro Fox Lecture Theatre 32
- Munro Fox Lab & Seminar Room 33
- Navwest Bank 7
- Picture Gallery 1a
- Sports Centre & Fields 46
- Student Administration Centre 4
- Students' Union 23
- The Hub/Imagine 41
- The Store on Campus 6
- Wetton's Annexe 63
- Windsor Building 2
- Woodlands Cottage, music practice 66

Residences

- Beeches 72
- Butler Hall 3
- Chestnuts 73
- Depository Lodge 38
- Founders' Building 1
- Gate Lodge 54
- Gowar Hall incl. Sang II Lee Hall 48
- Harvest Road No 1 67
- The Hub 41
- Highfield Close 57
- Highfield Cottage 60
- Highfield Court 55
- Kingswood Hall 75
- Penrose Court (Flats) 61
- Penrose Court (Houses) 56
- Reception & Hub 41
- Reid Hall 42
- Rummymede Halls 1 & 2 43
- Take Hall 9
- Wedgeburn Hall 47
- Williams Annexe 11a
- Woodlands 40
- 65

☒ Non-accessible Buildings

Key

- Campus buildings
- Residences
- Car parks (1-17)
- Gravel car parks
- Accessible route
- Gradient direction
- Zebra crossing
- Accessible parking space
- Information
- Deliveries
- Pedestrian access only
- Bike rack - covered
- Bike rack - uncovered
- Showers available to cyclists



Royal Holloway, University of London
 Egham, Surrey, TW20 0EX
 T: 01784 434455
www.rhul.ac.uk



100%