

University of Glamorgan

Pontypridd and Cardiff, Wales, UK



University of Glamorgan
Pontypridd, Wales, UK
CF37 1DL

Tel: +44 (0)1443 654 450
E-mail: international@glam.ac.uk

Visit: www.glam.ac.uk/international

The University of Glamorgan is a registered charity. Registration No. 1140312
Information in this brochure is correct at the time of print, but may be subject to change. For the most up-to-date information, call or check our website: www.glam.ac.uk

Follow us on Facebook, Twitter, YouTube and Flickr



International Student Guide

2012-2013

Education 
Innovative. Individual. Inspirational.

www.glam.ac.uk/international

International and EU Student Enrolment 2010



Top 10 international countries for enrolment 2010

India	377
People's Republic of China	329
Nigeria	250
Saudi Arabia	133
Pakistan	93
Malaysia	71
Botswana	61
Kenya	39
Libya	36

This brochure gives you an introduction to the University of Glamorgan. For more detailed information about the University, courses, facilities and much more, visit www.glam.ac.uk/international.

Contents

Welcome	5	Your Finances	34
Why Choose Glamorgan?	6	How to Apply	35
Location	8	Visa and Immigration Procedures	36
Latest Developments	10	Accommodation	38
Research	12	Glamorgan Sport	40
Teaching and Learning	13	The Students' Union	42
Cardiff School of Creative & Cultural Industries	14	Resources	44
Faculty of Advanced Technology	18	Support Services	46
Faculty of Business and Society	22	Alumni	49
Faculty of Health, Sport and Science	26	Maps	50
Pre-University and English Study	30	Additional Information	54
Fees	32	Contact Details	55





Welcome from the Vice-Chancellor



At the University of Glamorgan, we're proud of our reputation for first-class teaching, high employability rate, excellent facilities, and outstanding support for international students.

As a Glamorgan student, you will have the best possible learning experience and benefit from our multi-million pound investment programme, including purpose-built laboratories for our Health, Sport and Science students, an Aerospace Centre, and award-winning Students' Union centre. Plus new student accommodation at Treforest which will, I hope, become your home away from home.

As the University has grown, so has our reputation. We received a glowing report for the high quality of our teaching and in the latest Research Assessment Exercise (RAE2008), we confirmed our status as one of Wales' leading research-active universities. This research ensures that our courses reflect the latest thinking and advances, giving your university education an added distinction.

We are proud of our international outlook and the spectrum of nationalities that can be found on our campuses, including lecturing staff from across the globe. As an international student, you will be a valued member of our University community and I'm sure your ideas, culture and intellect will enrich us as a higher education institution.

Thank you for taking an interest in Glamorgan and I hope to welcome you here in the near future.

Julie Lydon
Vice-Chancellor



Welcome from the International Recruitment Office

As Head of International Recruitment, I want to thank you for considering the University of Glamorgan as your study destination. The University is justifiably proud of its reputation as a safe and friendly place in which to learn and enjoy life in the UK, and you can be sure that you will receive a warm welcome from fellow students, staff and the South Wales communities in which we are located.

We recognise that you can choose from many universities across the world for your future studies and that the decision you make is of huge importance to you, your family and your future career. I hope you find all that you

need in this guide, but remember you can discover much more about us on our international website www.glam.ac.uk/international, by contacting our International Office, or through our network of representatives across the world. I look forward to meeting you on our campuses.

Malcolm Taylor
Head of International Recruitment

Why Choose Glamorgan?

Excellent Reputation

- Outstanding reputation for teaching and learning since 1913
- Internationally renowned; educating over 3,250 international students, every year from 60 different countries
- In the latest Research Assessment Exercise (RAE2008), 10% of the University of Glamorgan's research was of a quality recognised as world-leading for its originality, significance and rigour
- Best new university in Wales (The Guardian League Tables University Guide, 2012)

State-of-the-art Facilities

- Over £130m investment in facilities – see pages 10 and 11 for details
- International rugby and football teams train at our sports facilities, including the British Lions, South Africa, New Zealand All Blacks and Wales.

Exciting Opportunities

- Scholarships of up to £2,000 per year available for international students – see page 32 for details
- Glamorgan alumni in over 100 countries worldwide
- 94% of our graduates are in employment or further study within six months of graduating (Graduate Destination Survey, 2009)
- Glamorgan is in the top 10 UK universities for employment (The Sunday Times University Guide, 2011)

Fantastic Location

- Three campuses:
 - A self-contained campus in a low-cost student town – Treforest – only 2.5 hours from London and 20 minutes from Cardiff
 - A dedicated campus for Health, Sport and Science students – Glyntaff – just 15 minutes walk from the Treforest campus
 - A state-of-the-art campus in the heart of Wales' capital city, Cardiff
- Comparatively low cost of living – see page 34 for more details



Tŷ Crawshay, Treforest Campus



Outstanding Courses

- Two start dates available; September and selected courses available in February
- Many courses accredited by the world's leading professional bodies
- Best university in Wales for Mathematics, Drama, Geography, Nursing and Social Work (The Guardian League Tables University Guide, 2012)
- In the top 10 universities in the UK for Nursing (The Guardian League Tables University Guide, 2012)
- Top in Wales for student satisfaction in the areas of Imaginative Writing, Electronic and Electrical Engineering, Marketing, Fine Art and Law* (National Student Survey, 2011)

*Joint top in Wales for Law.

Student Profile



Christopher Agyapong Siaw is a Commonwealth Scholarship student from Ghana. He is on the MSc Marketing at Glamorgan and has won the prestigious Professor Malcolm McDonald Student Essay Prize. Christopher's winning entry was for an essay entitled "Real value is defined by the customer, not the supplier". He said, "We were discussing these issues during my classes, and so I decided to enter when I saw the competition promoted on Glamlife, the student portal. I am extremely happy to have won this prize."

Christopher Agyapong Siaw, Ghana
MSc Marketing

Location

The UK is one of the first-choice destinations for students from all over the world. Every year, thousands of students choose to study in the friendly, safe, community environment of South Wales. Glamorgan students benefit hugely from the University's location, surrounded by the tranquillity of breathtaking scenery, boasting excellent transport links and the buzz of a dynamic capital city.

There are many travel opportunities open to Glamorgan students. London is only 2.5 hours away, and our railway station at Treforest provides a link to Cardiff International Airport and easy, cheap exploration of mainland Europe.

Student Profile



"The environment and location is amazing, in a valley surrounded by mountains, it is beautiful here. The University was recommended to me by my friends who were already studying here. What I like most about my course are the modules, which are all very interesting and very practical. I chose to come to the UK because there are many job opportunities and a very high standard of living. I now plan to get a job in the UK related to my degree."

Prashamit Bahua, Bangladesh
MSc Computer Systems Engineering



Glyntaff Campus



Pontypridd (Treforest and Glyntaff campuses)

If you want somewhere quiet to concentrate on your studies, this place is ideal. Away from the bustle of the city, you will find two friendly campuses surrounded by green, open spaces.

At our Treforest campus, all learning, living and leisure facilities are within easy reach, plus it is close to shops, bars and restaurants in Treforest and Pontypridd.

Less than a 15 minute walk from the Treforest campus is our Glyntaff campus, where Health, Sport and Science students enjoy new, purpose-built facilities.

Pontypridd is only 20 minutes from Cardiff, Wales' vibrant capital city. The University's railway station means you can reach all major cities in the UK, or head for some of Wales' world-famous countryside, like the Brecon Beacons National Park. You can also visit some of the most beautiful beaches and coastlines in the UK, which are nearby.



Welsh flag



ATRiuM



Wales Millennium Centre



Millennium Stadium

Cardiff (ATRiuM campus)

ATRiuM is our state-of-the-art campus in Cardiff city centre. This architectural icon is home to our Cardiff School of Creative & Cultural Industries, placing this Faculty at the heart of the capital's established arts scene. Students at this campus still have access to all the facilities at Treforest, as well as some special deals in the city.

Cardiff is less than 10 miles from our Treforest campus and can be reached by a direct rail link in 20 minutes. The Welsh capital has something for everyone – a vibrant

arts scene, top sporting venues, historical buildings, great nightlife and fantastic shopping. The city centre has a compact layout, so it is easy to explore and make the most of what it has to offer.

Cardiff is a very cosmopolitan city. As well as experiencing a warm Welsh welcome, you will meet people from all over the UK, Europe and the world, who live, work and study in Cardiff.

Cardiff Bay



Latest Developments

The University of Glamorgan is investing over £130m in its campuses to ensure students get the best possible learning experience. These exciting developments will see a radical change in student facilities across the Glamorgan Group. For up-to-date information on these developments, visit www.glam.ac.uk/developments.

Students' Union, Treforest Campus



Students' Union, Treforest Campus

Opened in September 2010, this iconic building offers modern, glass-fronted facilities that provide magnificent panoramic views across the valley. Areas include a social study lounge with internet access, a computer suite, wi-fi, soft-furnished lounge area, coffee shop, bar with sun terrace and an 800-capacity nightclub area that hosts a range of events and live music performances. For more information on the Students' Union, see pages 42-43.

Halls of Residence, Treforest Campus

To ensure our students get the best inside and outside the classroom, we've built five new, four-storey accommodation blocks that opened in summer 2011. This £20m development includes 120 premium rooms and 20 'micro-flats', in addition to the recent, high-spec refurbishment of 300 existing rooms. For more information on our accommodation, see pages 38-39.



Halls of Residence, Treforest Campus

Science and Sport Development, Glyntaff Campus



Science and Sport Development, Glyntaff Campus

The University has constructed a brand-new science block with state-of-the-art laboratories. These buildings deliver an enhanced teaching experience to students of sport coaching and sport science, chemistry and forensic science, medical sciences and biology, geography, and other environment-related courses.

Glamorgan Sport Park

To support the large growth in interest for our sport courses, we've constructed a purpose-built training facility alongside our existing playing fields. The Sport Park places Glamorgan's facilities for sport and coaching among the best in Wales, allowing national-level sports events to be held at our sport park. For more information on Glamorgan Sport Park, see pages 40-41.

Glamorgan Sport Park



Aerospace Centre, Treforest Campus

Aerospace Centre, Treforest Campus

An exciting new training facility opened in September 2010 for students on our aerospace courses. The Centre has an aircraft hangar and additional laboratory space. The hangar houses a commercial aircraft, so students can have workshop training on campus.

Royal Welsh College of Music & Drama

The Royal Welsh College of Music & Drama is part of the Glamorgan Group, offering specialist courses in music and drama. Following a major redevelopment, the College now features a new concert hall, theatre, drama and rehearsal spaces, and an exhibition gallery, all to complement and enhance the College's existing high-quality performance facilities.

Royal Welsh College of Music & Drama



Research

Glamorgan has a lively culture of research and innovation, with particular emphasis on interdisciplinary and collaborative research with a wide range of public and private partners. In keeping with our role as an institution that is firmly embedded in our local, regional and national communities, we also have great strengths in problem-driven research, conducted in partnership with external stakeholders.

The University achieved excellent results in the most recent Research Assessment Exercise (RAE2008). More than 70% of our research was assessed as being of a quality recognised internationally for its originality, significance and rigour, with around 10% of this research recognised as world-leading. This exercise has clearly demonstrated the significance of our contribution to the international research agenda across a wide range of disciplines. This has provided a very strong platform from which to expand and enhance our research activities.



Academic staff from partner universities in China

We recognise that many issues require a multidisciplinary approach and we have recently developed the Fields of Research. These overarch the current research groupings within Faculties and focus developments in six key areas: Energy and the Environment, The Digital Economy, Security and Resilience, Health and Wellbeing, Enterprise and Social Innovation, and Culture and Society.

We are also pleased to be part of the St David's Day Partnership of the large, research-active universities in Wales. We work closely with colleagues in Cardiff, Swansea, Aberystwyth and Bangor universities to focus our combined resources on the key issues facing Wales and the wider world.

The University's Research Office plays a major role in providing support for Glamorgan's research community by supplying specialist, tailored advice and guidance on research-related matters. The Postgraduate Research Office provides a one-stop shop for research students, supervisors and examiners, and organises a number of training events for all those associated with research degree programmes.

For further information on research and funding, visit www.glam.ac.uk/research and www.glam.ac.uk/money.



Teaching and Learning

All universities are subject to a regular institutional review that audits teaching quality and academic standards. This is carried out by the UK's Quality Assurance Agency (QAA) – an independent body financed by the Higher Education Funding Councils and UK universities themselves, to ensure that students get the best possible teaching and support during their study.

In its report, the QAA commended the University for demonstrating a strong commitment to supporting and enhancing the student experience. The inspectors highlighted the opportunities our students have to get involved in all aspects of their life at the University, in particular via the student representative schemes.

Monitoring course quality is an ongoing exercise and we continually examine our courses to make sure academic standards are met and improved. As a result, students can be sure that a University of Glamorgan degree is not only quality approved and internationally recognised, but will also prepare them for a career in even the most demanding environment.

The University prides itself on offering a wide range of subjects at different levels of study. As a student here, you can study from Foundation to Doctorate level, giving you the opportunity to start or develop the career of your choice. The University has four Faculties that offer different subjects and courses. We also have an English Language Unit to help applicants reach the level of English they need to start their degrees. See pages 30-31 for more information.

The information that follows gives a brief introduction to our Faculties and the courses you can study at the University of Glamorgan. For detailed information on courses, visit www.glam.ac.uk/courses.

Cardiff School of Creative & Cultural Industries

Specifically designed to nurture innovative and creative talent, the Cardiff School of Creative & Cultural Industries encompasses the rich diversity of the creative industries in the UK.

- Choose one of our exciting courses in the areas of Animation, Communication Design, Fashion and Retail, Film, Photography and New Media, Drama, Music and Sound, or Culture and Journalism.
- Based in our £35m ATRium campus right at the heart of Cardiff city centre.
- Located in Cardiff – a city with a growing international reputation for the arts and new creative technologies, and one of the largest media industries in the UK.
- State-of-the-art facilities, including a cinema, television and radio studios, film production facilities, design studios, theatre and performance spaces, computer labs, photography and journalism spaces, animation studios and much more.
- In the top 25 UK universities for Drama, and Art and Design (The Guardian League Tables, 2012).
- Award-winning courses accredited by the British

Journalism Training Council and many courses are part of the Skillset Media Academy.

- Interdisciplinary approaches to teaching encourage collaboration, so by graduation you will have a strong understanding of your chosen field and a network of potential contacts to help you in your chosen career.
- Courses designed to match industry trends.
- Excellent links with employers, including Apple UK, Hewlett Packard, BBC Wales and Sony, mean that we offer fantastic work experience opportunities, many of which lead to employment.
- Graduates have gone on to work on a number of prestigious animation productions, for example, Tim Allen, an Animation graduate has worked on *Tim Burton's Corpse Bride* and the Oscar-winning *Peter and the Wolf*.

Visit www.glam.ac.uk/cci for more information.

Artwork by MA Animation Student



Courses

Undergraduate courses

Animation

- BA (Hons) Animation
- BA (Hons) Computer Animation
- BA (Hons) Game Art and Animation

Communication Design

- BSc (Hons) Media Technology
- BA (Hons) Graphic Communication
- BA (Hons) Visual Effects and Motion Graphics

Fashion and Retail Design

- BA (Hons) Fashion Design
- BA (Hons) Fashion Promotion
- BA (Hons) Interior Design

Drama

- BA (Hons) Theatre and Drama
- BA (Hons) Performance and Media
- BA (Hons) Television and Film Set Design

Music and Sound

- BSc (Hons) Music Technology
- BA (Hons) Popular Music
- BSc (Hons) Sound Technology

Film, Photography and New Media

- BA (Hons) Film Studies
- BA (Hons) Film and Video
- BA (Hons) Media Production
- BA (Hons) Photography

Media, Culture and Journalism

- BA (Hons) Journalism
- BA (Hons) Media, Culture and Journalism
- BA (Hons) Radio

Did you know?

96% of our media studies students are in employment or further study within six months of graduation (Graduate Destination Survey, 2010).

Cardiff School of Creative & Cultural Industries, ATRium Campus



Postgraduate courses

- MA Animation
- MA Drama
- MA Graphic Communication
- MA Film Producing
- MA Interactive Journalism
- MA Investigative Journalism
- MA Journalism (International)
- MA Moving Image
- MA Multiplatform Radio
- MSc Music Engineering and Production
- MA Scriptwriting
- Masters by Research and PhD

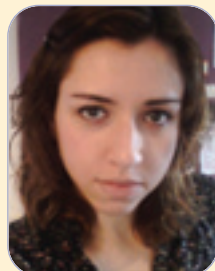
Student Profile



"Wales is a very welcoming place with lots to offer and the ATRium Campus is a brand-new development well located in the centre of Cardiff, where you can get anything you need!"

Pierre Laffoux, France
BA (Hons) Computer Animation

Student Profile

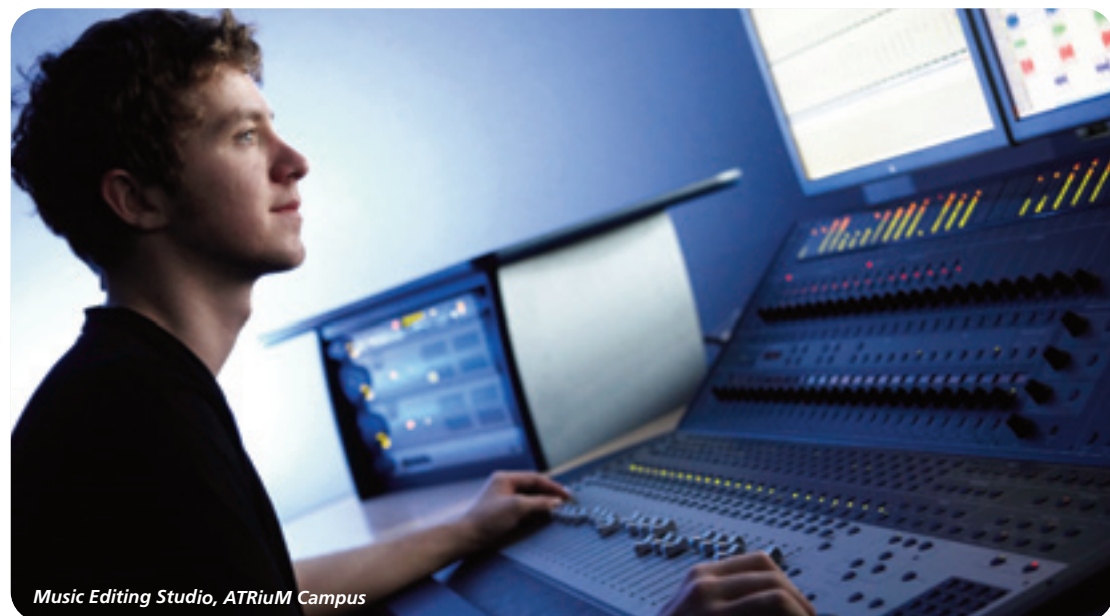


"I chose Glamorgan because it had state-of-the-art facilities, located in the Welsh capital and offered specialisation in digital media, which I was looking for. I have to say that the University has surpassed all my expectations in every possible way. Cardiff is simply a dream place to live and study. Being here is definitely a life-changing experience."

Celia Ramirez, Mexico
MA International Journalism

Did you know?

Our graduates have been employed at prestigious studios and worked on films such as *Hellboy 2*, *G-Force*, *Watchmen*, *Beowulf* and *Happy Feet*.



Music Editing Studio, ATRium Campus



Film and Television Studio, ATRium Campus

Faculty of Advanced Technology

The Faculty of Advanced Technology's academic structure has three main areas: Engineering and Technology, Built Environment, and Computing and Mathematics.

- We have a vibrant international community with students from countries across the globe, including Botswana, Cameroon, India, Kenya, Malaysia, Nigeria, China, and from many European countries such as Germany, France and Greece.
- Courses accredited by over 15 professional bodies, including the British Computer Society (BCS), The Royal Institution of Chartered Surveyors (RICS), Chartered Institute of Building, Institution of Engineering and Technology (IET), Institute of Mathematics and its Applications (IMA), Institute of Mechanical Engineers (IMechE), and the Institution of Civil Engineers.
- Close links with highly regarded industry players such as IBM, Orange®, Microsoft®, Costain, GCHQ, Fujitsu and Stradform to ensure our courses reflect the latest industry requirements, making you highly employable when it is time to enter the workplace.
- An accredited degree in Aircraft Maintenance, leading to an EASA Part 66 licence, preparing aircraft engineers for a highly rewarding career in the ever-expanding aerospace industry.
- State-of-the-art facilities on campus, including a £1m Aerospace Centre and 'The Cube' – a flexible space for lighting and live events courses.
- In the top 25 UK universities for Mathematics (The Guardian League Tables 2012).
- The University of Glamorgan is one of only two universities approved by MI5 for graduate recruitment in Computer Forensics.
- Home to the Centre of Excellence in Mobile Applications and Services (CEMAS).
- Our Electronic Product Engineering and Environmental Technology Centres are designated centres of expertise in Wales.

Visit www.glam.ac.uk/fat for more information.



Johnstown Building, Faculty of Advanced Technology, Treforest Campus

Courses

Undergraduate courses

Built Environment

- BSc (Hons) Project Management (Construction)
- BSc (Hons) Quantity Surveying and Commercial Management
- BSc (Hons) Real Estate Appraisal and Management

Computing

(Foundation Year available)

- BSc (Hons) Computer Forensics
- BSc (Hons)/MComp Computer Games Development
- BSc (Hons)/MComp Computer Science
- BSc (Hons)/MComp Computer Security
- BSc (Hons) Computing
- BSc (Hons) Information Communication Technology
- BSc (Hons) Information Technology Management for Business
- BSc (Hons) Mobile Application Development
- BSc (Hons) Multimedia Computing
- BSc (Hons) Software Engineering

Mathematics

(Foundation Year available)

- BSc (Hons) Mathematics
- BSc (Hons) Computing Mathematics
- BSc (Hons) Financial Mathematics
- BSc (Hons) Mathematical Sciences
- BSc (Hons) Mathematics and Accounting
- BSc (Hons) Mathematics with Accounting
- BSc (Hons) Mathematics with Education

Engineering and Technology

(Foundation Year available)

- BEng (Hons)/MEng Aeronautical Engineering
- BEng (Hons) Aeronautical Systems Engineering with Avionics
- BSc (Hons) Aircraft Maintenance Engineering
- BEng (Hons)/MEng/BSc (Hons) Civil Engineering
- BEng (Hons) Computer Systems Engineering
- BEng (Hons)/MEng Electrical and Electronic Engineering
- BEng (Hons) Electronic and Communication Engineering
- BSc (Hons) Lighting Design and Technology
- BSc (Hons) Live Event Technology
- BEng (Hons)/MEng/BSc (Hons) Mechanical Engineering
- BSc (Hons) Renewable Energy Systems*

Top-up courses

- BSc (Hons)/BSc Electrical and Electronic Engineering

*Subject to validation

Student Profile



"The University of Glamorgan has a great reputation for aeronautical degrees and is recognised nationally and internationally. It offered me a diverse culture, fully equipped lecture rooms and labs, social clubs, societies and sporting facilities. The course

is very broad as you get full insight into many engineering aspects, from aircraft design and production to maintenance. It teaches engineering mathematics, traditional engineering concepts and a test of future technology."

Mandla Sibanda, South Africa
BEng (Hons) Aeronautical Engineering

Did you know?

100% of our built environment students are in employment or further study within six months of graduation (Graduate Destination Survey, 2010).

Did you know?

100% of our mathematics students are in employment or further study within six months of graduation (Graduate Destination Survey, 2010).



Materials Testing Laboratory, Treforest Campus

Postgraduate courses

Built Environment

- MSc Construction Project Management
- MSc Environmental Management
- MSc Real Estate Development
- MSc Safety, Health and Environmental Management
- MSc Sustainable Business Risk Management
- MSc Total Quality

Engineering and Technology

- MSc Aeronautical Engineering
- MSc Aircraft Maintenance Systems
- MSc Civil and Structural Engineering
- MSc Civil Engineering and Environmental Management
- MSc Civil Engineering for International Development
- MSc Computer Systems Engineering
- MSc Electronic Mobile Communications
- MSc Electronic Product Design
- MSc Electronics and Information Technology
- MSc Embedded Systems Design
- MSc Energy Systems Engineering
- MSc Mechanical Engineering
- MSc Mobile and Satellite Communications
- MSc Professional Engineering
- MSc Sustainable Power Technology

Computing

- MSc Computer Forensics
- MSc Computer Games Development
- MSc Computer Science
- MSc Computer Systems Security
- MSc Computing and Information Systems
- MSc Geographical Information Systems
- MSc Intelligent Computer Systems
- MSc Mobile Computing
- MSc Mobile Telecommunications Management

Student Profile



solve that problem together.”

“Studying at Glamorgan is possibly the best choice I have ever made. Every module is really interesting and innovative. The lecturers have strong professional experience and teaching skills. If you have any problem, you can contact your lecturers to

Trinh Thành Trung, Vietnam

MSc Intelligent Computer Games Development

Did you know?

The University has a full-size Jetstream 31 commercial aircraft right here on campus.

Student Profile



“I have made the most of my time at university by gaining employability skills. I won the prize for best project from the Institute of Mechanical Engineers. I solved a real-life problem given to me from the company Corus. I gained invaluable work experience on this project and may be lucky enough to secure a job with them now.”

Vivek Kapur, India

BEng (Hons) Mechanical Engineering



Faculty of Business and Society

The Faculty of Business and Society is made up of four academic schools: Glamorgan Business School, the School of Humanities and Social Sciences, the School of Law, Accounting and Finance, and the School of Psychology.

- The Faculty is host to a vibrant international community with students from countries all over the world, including China, Malaysia, Nigeria and Ghana, as well as many European countries.
- All courses are led by academics who are actively engaged in applied research and scholarly activity, and we have strong links with professional bodies and associations.
- Many of our courses are accredited by leading professional bodies, including the Chartered Institute of Purchasing and Supply (CIPS), the Chartered Institute of Logistics and Transport (CILT), the Chartered Institute of Personnel and Development (CIPD), the Chartered Institute of Marketing (CIM), the Association of Chartered Certified Accountants (ACCA), the Solicitors' Regulation Authority, and the British Psychological Society (BPS).
- All of our courses are designed with employability at the core, so that graduates have the best possible start in their chosen career.
- We enjoy strong relationships with global, regional and national organisations from all sectors.
- Many of our undergraduate programmes offer students the opportunity to undertake a work placement year and our students have worked with leading organisations such as Microsoft®, Rolls-Royce Motorcars, and GE Aviation.
- Many of our postgraduate programmes offer students the opportunity to undertake real projects on behalf of private and not-for-profit organisations.
- Gold Status as a learning partner by the ACCA.

Visit www.glam.ac.uk/fbs for more information.



Hirwaun Building,
Faculty of Business and Society, Treforest Campus

Courses

Undergraduate courses

Glamorgan Business School

- BA (Hons) Business Management
- BA (Hons) Business Enterprise
- BA (Hons) Human Resource Management
- BA (Hons) Logistics and Supply Chain Management
- BA (Hons) Marketing
- BA (Hons) Event Management
- BA (Hons) Sport Management
- BA (Hons) Sports Development
- HND Business Studies

Top-up courses

- BA (Hons) Business Studies
- BA (Hons) Business and Finance
- BA (Hons) Business and Accounting
- BA (Hons) Business and Human Resource Management
- BA (Hons) Business and Marketing
- BA (Hons) Business and Supply Chain Management
- BA (Hons) International Business

School of Humanities and Social Sciences

- BA (Hons) American Studies (Minor)
- BA (Hons) Art Practice
- BSc (Hons) Criminology and Criminal Justice
- BSc (Hons) Criminology and Criminal Justice (Major/Minor/Joint)
- BA (Hons) Creative and Professional Writing
- BA (Hons) English Literature
- BA (Hons) English
- BA (Hons) English (Major/Minor/Joint)
- BA (Hons) History
- BA (Hons) History (Major/Minor/Joint)
- BA (Hons) Public Services
- BSc (Hons) Sociology (Major/Minor/Joint)
- BA (Hons) TESOL (Teaching English to Speakers of Other Languages) (Minor)
- HND Public and Emergency Services

School of Law, Accounting and Finance

- LLB (Hons) Law
- LLB (Hons) Law (Major)
- LLB (Hons) Law – Two-year programme
- MLaw (Four year integrated LLB/Diploma in Legal Practice)*
- BA (Hons)/BSc (Hons) Law (Joint/Minor)
- BA (Hons) Accounting and Finance
- BA (Hons) Forensic Accounting
- BA (Hons) International Accounting
- HND Accounting
- Foundation Degree in Finance (Financial Planning)

Top-up courses

- BSc (Hons) Finance

* Subject to validation



Did you know?

100% of our marketing students are in employment or further study within six months of graduation (Graduate Destination Survey, 2010).

School of Psychology

- BA (Hons) Education (Minor)
- BSc (Hons) Applied Psychology
- BSc (Hons) Childhood and Youth
- BSc (Hons) Developmental Psychology
- BSc (Hons) Early Years Development and Education
- BSc (Hons) Psychology
- BSc (Hons) Psychology (Major/Minor/Joint)
- BSc (Hons) Sport Psychology

Student Profile



"I am confident that the opportunities at Glamorgan will exceed your expectations. I personally believe that to succeed in business you need to be intellectually strong and innovative, and Glamorgan provides its students with the necessary skills to be successful in a competitive business environment. I also have to say that my tutors are excellent; they are very supportive and are experienced enough to be able to give advice about your future career."

Xun Wang, China
BA (Hons) Business Studies (top-up)

Postgraduate courses

Glamorgan Business School

- Master of Business Administration (MBA)
- MSc Engineering Management
- MSc Human Resources Management
- MSc International Business and Enterprise
- MSc International Fashion Marketing
- MSc International Logistics and Supply Chain Management
- MSc Management
- MSc Marketing
- MSc Public Relations
- MSc Strategic Procurement Management

School of Humanities and Social Sciences

- MA Art Practice
- MSc Community Regeneration
- MSc Criminology and Criminal Justice
- MA Literature, Culture and Society
- MA by Research English
- MPhil Writing
- MA Social and Cultural History
- MA by Research History
- MSc Health and Public Service Management
- MSc Public Services Management

School of Law, Accounting and Finance

- Graduate Diploma in Law/Common Professional Examination (GDL/CPE)
- PgD Legal Practice Course (LPC)
- LLM Masters in Law
- LLM Commercial Law
- LLM International Commercial Law
- MSc Accounting
- MSc Forensic Audit and Accounting
- MSc Islamic Banking and Finance
- MSc Management and Development of International Financial Systems

Student Profile



assignments and exams."

"The MBA is boosting both my theoretical knowledge and also my practical knowledge of western business culture. The lectures have been a great help in learning about business theory and practice, and developing my skills on

**Ravindra Nyaupane, Nepal
MBA**

Did you know?

TS Eliot Prize winner, Professor Philip Gross, lectures here at the University of Glamorgan.

School of Psychology

- MSc Career Guidance
- MSc International Career Education and Guidance
- MSc Educational Practice*
- MSc Behaviour Analysis and Therapy*
- MSc Clinical and Abnormal Psychology*
- MSc Health Psychology (BPS Route)
- MSc Health Psychology: Theory and Practice
- MSc by Research Psychology
- MSc Play Therapy
- MSc Play and Therapeutic Play
- PgD Supervised Practice in Sport Psychology*
- PgC Behaviour Analysis Supervised Practice*

* Subject to validation

Did you know?

The University of Glamorgan has been awarded Gold Status as an Approved Learning Partner – student tuition by ACCA.

Student Profile



"Glamorgan has a great Business School. The MBA tuition fee is very competitive and the living costs are very reasonable. The MBA gave me an excellent foundation to build on my business acumen and helped me to get a great job as a Project

Manager in one of the largest consultant companies in China. The teachers were all very helpful and supportive and I now have more confidence when speaking in public and dealing with foreign people."

**Hung-Wei Feng, Taiwan
MBA**

Did you know?

100% of our accounting students are in employment or further study within six months of graduation (Graduate Destination Survey, 2010).

Moot Courtroom, Treforest Campus



Student Profile



"I am very positive about my job prospects. I already have a good business degree, but this LLM will really give my career a boost. There is no doubt in my mind that the effort and resources I have put into this Masters will benefit me in the future, not only career-wise but also in my personal life. Studying abroad and the international environment at the University of Glamorgan have definitely brightened my perspectives on life."

**Laura Tessa Bos, Latvia
LLM International Commercial Law**

Did you know?

97% of our law students are in employment or further study within six months of graduation (Graduate Destination Survey, 2010).

Faculty of Health, Sport and Science

The diverse mix of cultures in the Faculty of Health, Sport and Science reflects our commitment to a multidisciplinary approach. We offer courses from Health and Social Care to Sports Science and Coaching.

- £20m investment in state-of-the-art facilities, which demonstrates the growing popularity of Health, Science and Sport courses at Glamorgan.
- Nursing, Midwifery, Health and Social Care, Social Work, Chiropractic and Medical Sciences courses taught in state-of-the-art lecture rooms and clinical simulation suites.
- Many of our courses are accredited by leading professional bodies, including The Society of Biology, Skills Active Endorsement, The Forensic Science Society (FSSoc), The British Association of Sport and Exercise Sciences (BASES), Royal Society of Chemistry (RSC), and British Association of Counselling and Psychotherapy (BACP).
- In the top 10 UK universities for Anatomy and Physiology, and in the top 25 UK universities for Nursing, Geography and Environmental Studies (The Guardian League Tables 2012).
- In the top 10 UK universities for Social Work (The Times Good University Guide 2012).
- Dedicated scenes of crime house for Forensic Science students, which provides an environment to investigate realistic crime scenes.
- The only university in the UK where students can visit Mount Etna and Stromboli (the world's most active volcano) as part of their Geography and Environment studies.
- We have the largest and most effective research group of exercise physiologists in Wales.

Visit www.glam.ac.uk/hesas for more information.

Aneurin Bevan Building, Glyntaff Campus,
Faculty of Health, Sport and Science



Courses

Undergraduate courses

Health Sciences

- Foundation Year Health and Social Care
- BSc (Hons) Social Work
- BMid (Hons) Midwifery
- BN (Hons) Nursing (Adult)
- BN (Hons) Nursing (Child)
- BN (Hons) Nursing (Learning Disabilities)
- BN (Hons) Nursing (Mental Health)
- BSc Professional Practice
- MChiro Chiropractic
- BSc (Hons) Health and Social Care
- BSc (Hons) Nutrition, Physical Activity and Community Health

Life Sciences

- Foundation Year Science
- BSc (Hons) Biology
- BSc (Hons) Human Biology
- BSc (Hons) International Wildlife Biology

Medical Sciences

- BSc (Hons) Medical Sciences

Physical Sciences

- BSc (Hons) Observational Astronomy
- BSc (Hons) Chemistry
- BSc (Hons) Forensic Biology
- BSc (Hons) Forensic Chemistry
- BSc (Hons) Forensic Science
- BSc (Hons) Forensic Science (Major)
- BSc (Hons) Pharmaceutical Science

Police Sciences

- BSc (Hons) Police Sciences

Student Profile



"The Welsh Institute of Chiropractic at the University of Glamorgan is a quality centre for chiropractic studies with all the facilities you could need. The teachers are great and very experienced, both when it comes to teaching and clinical work, so the competency level of the staff is very high."

Pål Andersen, Norway
MChiro Chiropractic

* Faculty of Business and Society courses - see page 22.



Did you know?

Glamorgan's Astronomy students have access to the Faulkes Telescopes based in Hawaii and Australia.

Sport

- Foundation Degree Football Coaching and Performance
- Foundation Degree Rugby Coaching and Performance
- BSc (Hons) Sports Science and Rugby
- BSc (Hons) Sport and Exercise Science
- BA (Hons) Sports Development*
- BA (Hons) Sport Management*
- BSc (Hons) Sport Psychology*
- BSc (Hons) Sports Studies

Geography and the Environment

- BA (Hons) Geography
- BSc (Hons) Geography
- BSc (Hons) Geography and Geographical Information Systems (GIS)
- BSc (Hons) Geology
- BSc (Hons) Geology (Joint/Minor)
- BSc (Hons) Natural History
- BSc (Hons) Physical Geography
- BSc (Hons) Physical Geography (Major/Joint)

Did you know?

100% of our biology students are in employment or further study within six months of graduation (Graduate Destination Survey, 2010).

Did you know?

97% of our sport students are in employment or further study within six months of graduation (Graduate Destination Survey, 2010).

Postgraduate courses

Health Sciences

- MSc Childhood Studies
- MSc Mental Health
- MSc Professional Practice (includes a number of specialised pathways)
- MSc Public Health

Geography and the Environment

- MSc Environmental Conservation Management
- MSc Conservation and Geographical Information Systems (GIS)
- MSc Renewable Energy and Resource Management
- MSc Disaster Management for Environmental Hazards

Physical Sciences

- MSc Analytical and Forensic Science
- PgCert Forensic Science
- MSc Forensic Odontology

Police Sciences

- MSc/PgDip/PgCert International Policing
- MSc/PgDip/PgCert Community and Partnerships

Did you know?

We have a special multi-room scenes of crime house to provide real-life practice for the forensic investigators of tomorrow.

Student Profile



"So far, I've had an awesome experience and I've made lots of friends in the process. The University's large resource library, comfortable accommodation facilities, lecture halls, well-equipped laboratories and sporting facilities are just a few things

that have made my stay worthwhile. The enthusiasm of the lecturers to assist and monitor academic progress via feedback and extra tutorials is very impressive. The location of the University is perfect for learning and the access to transportation systems makes it a lot easier to move around, shop and discover interesting sites."

Datiemudor Okori, Nigeria
MSc Geographical Information Systems

Distance-Learning courses

- BSc (Hons)/BSc Cancer Care
- MSc Care of the Older Person
- MSc/PgDip Diabetes
- MSc Disaster Healthcare
- PgCert Palliative Care
- MSc/PgDip/PgCert Chiropractic Clinical Development
- MSc Independent Prescribing CPD

Student Profile



"Glamorgan is so much more than I had ever anticipated. The course is really well structured and I get loads of valuable, hands-on experience from labs, the Clinical Simulation Centre and hospital placement. In my spare time I play volleyball for

the University team, am a member of the Student Council, and love going out in the amazing Students' Union. I also have a job working for the University as a student ambassador."

Sarah Valkenborghs, Ireland
BSc (Hons) Medical Sciences

Did you know?

The University of Glamorgan is home to the Welsh Institute of Chiropractic.



Student Profile



"The staff were really helpful from the very first day, which means a lot, especially for students who are coming from abroad and feel a little anxious or strange in their new environment. I am also very satisfied with the social side of uni life, as we often

gather together with classmates to have fun. As a first year student I still have a long way to go, but these first couple of months have been enough for me to know that the University of Glamorgan is the best place for me to start my future."

Viktoria Karagits, Hungary
BSc (Hons) Geography



Glamorgan Geography Students, Mount Etna, Sicily

Pre-University and English Study

The Centre for International English offers academic and English language preparation programmes at a range of different levels. These courses help international students to develop a wide range of skills, academically and socially, within a UK university environment.

All courses are delivered by fully qualified and professional teachers of the English language who have broad experience of working with international students. We are supportive of your academic needs and ambitions, and work closely with the University's academic Faculties to make sure you get the best preparation and support for your studies. The programme you choose will depend on your level of English and academic qualifications.

The Centre for International English continues to support international students even after their preparation course

has finished. Upon consultation with your Faculty, you may be able to attend English language modules free of charge, to fully support you throughout your study.

The University strongly recommends that you allow at least 10 weeks to improve your English level by up to one (1.0) IELTS point (or equivalent).

For more information on any of our English language courses, visit www.glam.ac.uk/international.



International Foundation Programme (IFP)

This one-year programme has been designed for students who want to study at undergraduate level in the UK. You will be taught in small groups to develop your subject-specific knowledge and academic study skills to the standard needed for undergraduate study.

Entry requirements

Applicants need a valid national school leaving certificate at an appropriate level. In addition, you will need a level of English equivalent to IELTS 6.0. On successful completion of the IFP, you can progress to the first year of your University of Glamorgan undergraduate award. Progression routes include Business, Law, Humanities and Social Sciences, Computing and Engineering. Please check with the University whether your chosen pathway is available.

Start dates for 2012-2013

- 24th September 2012
- January 2013 (exact date to be confirmed)

International Foundation Programme (IFP) (Intensive English)

This one-year programme has been designed for students who want to study at undergraduate level in the UK. You will be taught in small groups with a strong focus on developing your academic English language skills, as well as subject-specific knowledge to the standard needed for undergraduate study.

Entry requirements

Applicants need a valid, national school leaving certificate at an appropriate level. In addition, you will need a level of English equivalent to IELTS 5.0 with a minimum of 4.5 in the writing component. On successful completion of the IFP, you can progress to the first year of your University of Glamorgan undergraduate award. Progression routes include Business, Law, Humanities and Social Sciences, Computing and Engineering. Please check with the University whether your chosen pathway is available.

Start dates for 2012-2013

- 24th September 2012
- January 2013 (exact date to be confirmed)

Pre-sessional English Language Programmes

These are 5, 10 or 20-week intensive English language courses for students holding conditional offers for programmes at the University of Glamorgan, but who do not meet the language requirements. The pre-sessional programme improves your English and academic skills, and helps you communicate more effectively in an English-speaking environment.

Entry requirements

Applicants must hold an offer for a course at the University of Glamorgan (foundation, undergraduate, top-up or postgraduate levels). Applicants must also satisfy the English language requirements as detailed in the table below.

Fees

For information on fees for pre-sessional programmes, see page 32.

Recommended pre-sessional routes for students holding offers for bachelor/top-up programmes		
Current English level	Recommended pre-sessional programme	Programme start
IELTS 4.0/4.5* (with minimum 4.0 in all bands)	20-week pre-sessional	July 2012 and September 2012 (leading to February 2013 start)
IELTS 5.0 (with minimum 4.5 in all bands)	10-week pre-sessional	July 2012 (leading to September 2012 start) October 2012 (leading to February 2013 start)
IELTS 5.5** (with minimum 5.0 in all bands) OR IELTS 6.0 with less than 5.5 in one or more bands (but minimum 5.0 in all bands)***	5-week pre-sessional	August 2012 (leading to September 2012 start) November 2012 (leading to February 2013 start)

*Students with an IELTS 4.0 or 4.5 wishing to take the International Foundation Programme (Intensive English) should apply for the 10-week pre-sessional in July 2012 (leading to September 2012 IFP start) or in October 2012 (leading to January 2013 IFP start).

**Students with an IELTS 5.5 holding offers for Masters programmes should apply for the 10-week Pre-Masters Programme in July 2012 (leading to September 2012 Masters start) or in October 2012 (leading to February 2013 Masters start). A 5-week Pre-Masters Programme is available for students with an IELTS 6.0 (running in August 2012 and November 2012).

***Note: The UKBA requires students to achieve overall IELTS 6.0 with 5.5 in each band to join directly onto courses above degree level.

Fees

Tuition Fees for International Students 2012-2013

	Proposed for 2012-2013		
	Tuition Fee	Maximum Scholarship	Minimum Fee Payable
Research Degrees			
Full-time Research Fee	£11,695	–	£11,695
Part-time Research Fee	£3,320	–	£3,320
Postgraduate Degrees			
MBA	£11,700	£1,500	£10,200
MSc/MA	£11,400	£2,000	£9,400
BA top up + MSc/MA Package	£15,450	–	£15,450
MSc Disaster Healthcare plus two field courses at £1,080 each (£2,160 total) – invoiced separately	£11,385	£2,000	£9,385
MSc Forensic Odontology – Cost per year for Year 1 and 2, plus additional bench fee of £805 per year	£9,630	£1,000	£8,630
MSc Computer and Music Performance	£12,835	£2,000	£10,835
Undergraduate Degrees			
BA/BSc/BEng/LLB	£10,750	£1,500	£9,250
Degree Course Placement Year	£4,500	–	£4,500
International Foundation Programme (IFP)	£6,500	–	£6,500
Other Courses			
HND courses	£10,750	£1,500	£9,250
Placement Year	£3,750	–	£3,750
Pre-sessional English Language Programmes			
20-weeks	£6,000	–	£6,000
10-weeks	£3,000	–	£3,000
5-weeks	£1,500	–	£1,500

Please note that some courses require additional fees for equipment, studio time and field courses. Visit www.glam.ac.uk/money for further details.

Scholarships

Partial tuition scholarships of up to £2,000 per year are available on selected courses.

- For undergraduate courses, up to £1,500 per year
- For Masters courses, up to £2,000
- For MBA courses, up to £1,500

You will be automatically considered for a scholarship when you make your application. You do not need to make a separate scholarship application. You will receive confirmation of a scholarship with your offer letter. Scholarships may be withdrawn if conditions of the

scholarships are not adhered to. More information about fees and scholarships is on our website: www.glam.ac.uk/international/fees

Extra Information

Please note that the fees stated above are subject to change.

Fees for these courses are charged per academic year. Accommodation and living costs should be calculated separately.

All students who are not UK or EU citizens are not eligible for government support for fees. If you are not a UK or EU citizen, you will be asked to pay the full tuition fee as quoted for your course.



Tuition Fees for Students from the European Union 2012-2013

Undergraduate students

Most students who normally live in non-UK EU countries prior to study will be personally liable to pay fees of £3,465* and will be able to meet this cost by taking a Tuition Fee Loan from the Student Loans Company.

The fees that are charged above this amount will be paid for via a Tuition Fee Grant** (up to a maximum of £5,535) from the Welsh Government for all eligible students who normally live in non-UK EU countries and study at a Welsh university. Eligibility for this Tuition Fee Grant will be determined via an application to the EU team at the Student Loans Company. This Tuition Fee Grant is not means tested and does not have to be repaid.

**This is the fee for 2012-2013 and is likely to be adjusted each following year in line with inflation.*

***Subject to Student Support Regulations.*

Postgraduate students

Our postgraduate tuition fee for 2011 was £3,732 for most programmes. The fee for 2012 entry has not yet been agreed, but it is expected to increase in line with inflation. As soon as the exact fee has been announced, it will be published on our website at www.glam.ac.uk/money.

There are various ways to fund your postgraduate study, including bursaries and scholarships offered by the University of Glamorgan. Check the scholarships pages on www.glam.ac.uk/money for more information.

Please note that Pre-University and English language course fees may differ for EU students. Please contact the University for further information. For more information about fees, visit www.glam.ac.uk/international/fees.



Trip to Abergavenny Museum

Your Finances

Living costs

South Wales offers great value for money. Food, entertainment, accommodation and other day-to-day costs are likely to be lower than in many other parts of the UK.

It is difficult to estimate how much it will cost you to live in the UK because so much depends on your own personal lifestyle. The UK Border Agency suggests that students should allow approximately £600 per month for their living costs. You will also need to consider any additional costs of travelling to and from your home country. For more information on general living costs in the UK, visit www.educationuk.org.

Average weekly living cost	Living in Halls	Private sector housing
Accommodation	£84-£140	£50
Food	£30	£30
Utility Bills	-	£10
Contents Insurance	£1	£1
Books/printing etc	£10	£10
Travel	£4	£6
TV Licence	£2.50	£2.50
Toiletries/laundry	£4	£4
Phone	£7	£7
Clothes	£7	£7
Socialising	£40	£40
Total	£190-£246	£167.50

Please note that the figures quoted above should be used as a guide only. If your family will live with you in the UK, then you will need to bring enough money to support them too.



Deposits

A deposit must be paid before letters for visa application are issued. This deposit will also secure scholarships. Your offer letter will clearly outline methods of payment for your deposit and the balance of your tuition fees. Please note that students from the EU are not required to pay a deposit.

Refund of deposits or prior payment of fees will only occur if you can produce evidence that your visa was refused. Refunds will not be made under any other circumstances. Please note refunds may incur an administration fee.

Payment schedule

Exact payment details will be outlined in your offer letter. Visit www.glam.ac.uk/international/fees for details.

Sponsored students

If you want your sponsor to receive information about your progress, please bring a signed letter to enrolment that gives the University permission to do so.

Student Profile



"The University campus offers all the necessary facilities for a student to reach his or her potential. Everything we need can be found on the campus, like the library, laboratories, Halls of Residence, wireless internet connection, health and gym centre, coffee shops and my favourite place, the Students' Union!"

Gabriel Snae, Romania
MSc Mobile Telecommunications Management Engineering

How to Apply

Academic entry requirements

The University recognises a range of entry qualifications from around the world – country-specific entry requirements are on our website: www.glam.ac.uk/international

For taught programmes, you must usually have an Honours degree from a recognised university, relevant experience, or a postgraduate diploma. For research-based study you must usually have a Masters degree from a recognised university that is related to your proposed area of research.

If you are not sure whether you have the right qualifications, e-mail interadmit@glam.ac.uk.

English language entry requirements

Proficiency in the English language is essential, and the University recognises the following English language qualifications:

- The British Council's IELTS, with an average overall score of 6.0 for undergraduate study and 6.5 for postgraduate study. *Please note students must achieve at least 5.5 in each band for both undergraduate and postgraduate.*
- TOEFL IBT minimum score 79-80
- UCLES/Cambridge CAE or computer-based 232
- GCSE pass in English at grade C or above

Applying

Undergraduate applications must be made through UCAS: www.ucas.com

Postgraduate applications can be made directly to the University using our online application system at www.glam.ac.uk/apply. Please note there is no application fee when you apply to the University directly.

Application deadline

UCAS applicants must adhere to UCAS deadlines. Visit www.ucas.com for details. For direct applicants, the deadline is Friday 10th August 2012 for courses starting in September 2012, and Friday 7th December 2012 for courses starting in February 2013.

Education counsellors

The University has a number of international student representatives in specific countries who are available to advise you on any aspect of the University of Glamorgan. Please contact the University for details of representatives in your local area or visit our website: www.glam.ac.uk/international

EU students

For full-time undergraduate courses, EU students must apply through UCAS: www.ucas.com.

Postgraduate applications can be made directly to the University using our online application system at www.glam.ac.uk/apply.

Please note there is no application fee when you apply to the University directly.

Contact

If you have any questions or queries about applying to Glamorgan, please contact our Enquiries & Admissions team for assistance.

Tel: +44 (0)1443 654 450
 Fax: +44 (0)1443 654 050
 E-mail: enquiries@glam.ac.uk



Visas and Immigration Procedures

Do I need a visa?

European Economic Area (EEA) nationals

You can enter the UK freely by showing your passport or National Identity Card and do not need to get a visa before travelling to the UK.

Nationals of countries outside the EEA

If you are a national of a country outside the EEA, you will probably need a visa to study in the UK – you should check the 'Do I need a visa?' section of the UKBA website: www.ukvisas.gov.uk

If you need to apply for entry clearance (visa) to come to the UK to study, it is important that you visit the University's guide to visas and application processes: www.glam.ac.uk/international/visas

Once you have accepted an offer to study at Glamorgan, you will be e-mailed an electronic copy of the 'Guide to applying for entry clearance under Tier 4 of the Points Based System', which will assist you in making your application. If you do not receive this, please request a copy by e-mailing intsupport@glam.ac.uk.

Please note: you can apply for a Tier 4 student visa up to three months before the start of your course. You will only be able to enrol on the course and at the University that the visa has been issued for, which has an agreed start date. Any changes to University or course start dates should be updated by getting new entry clearance before you leave your home country.

If you want to bring family members to the UK with you as your dependants, visit the 'Bringing your family' section on our website for information and guidance: www.glam.ac.uk/international/visas



Glamorgan Court Kitchen

Tuberculosis screening

Before getting a visa, nationals from Bangladesh, Ghana, Kenya, Pakistan, Sudan, Tanzania, and Thailand will need to be tested for tuberculosis (TB), and obtain a certificate that states they are free from infectious TB. The test includes having a chest X-ray at an accredited clinic or hospital run by the International Organisation for Migration. To check whether you need to obtain a TB certificate before you travel, you can check the UK visas website:

www.ukvisas.gov.uk/en/howtoapply/tbscreening

When your entry clearance has been issued

Check it carefully to make sure:

- Your name and date of birth are correct
- It clearly states that you are a student
- The sponsor licence number is identical to the one listed on your CAS statement
- It starts on or before the date you want to travel to the UK
- It does not end sooner than you expect

When considering your application for entry clearance, the British Embassy, High Commission or Consulate in your country should comply with the guidance, which you can access on our correct visa lengths page:

www.glam.ac.uk/intsupport/visa-lengths

If there are any errors in your entry clearance, please make the necessary changes before you travel as it is very difficult to make changes once you arrive.

Student Profile



in my abilities. I love it, I absolutely love it!"

Sabriya Naamani, Oman
MSc International Career Education and Guidance

"I love every bit of my course. Our lecturers know us very well and give us individual attention, which is a very big help. The University allows us to go on placements where I have grown much more confident in myself and



Glynneath Building, Treforest Campus

The University's reporting duties under Tier 4 of the Points Based System

International students are permitted entry to the UK under immigration laws for the purposes of study. The University is required to report to the UK Border Agency when international students holding a Tier 4 student visa:

- Do not enrol within the enrolment period
- Enrol, but do not attend and miss ten expected interactions
- Discontinue their studies (including suspensions of study)
- Make significant changes to their circumstances (such as the successful completion of a course earlier than expected)
- Break the conditions of their permission to stay, such as working illegally

Accommodation

Halls of Residence

What does our on-campus accommodation offer?

- Quality accommodation with prices to suit every budget
- 1,205 self-catered rooms on campus in Treforest and 501 rooms in Cardiff
- All rooms are en suite with private shower, wash basin and toilet facilities
- 24-hour security system
- Catering voucher option available upon request
- Rental fees include internet, all utility bills, insurance and maintenance cover
- University of Glamorgan welfare support available
- International students are expected to pay Halls rental in full at the beginning of the academic year
- EU students are expected to pay Halls rental by direct debit
- More details will be provided in the accommodation offer pack, or at www.glam.ac.uk/accommodation.

Treforest



Mountain Halls: Snowdon, Pen Y Fan, Sugarloaf, Garth

- Standard rooms £98 per week, 12.5m², 39-week contract, 360 rooms available
- Premium rooms £105 per week, 15m², 39-week contract, 96 rooms available
- Communal kitchen and dining space shared between five to six students
- A flatscreen TV with extra 'Freeview' channels in each kitchen
- Large fridge and freezer available in each kitchen
- Mini fridges are available to order on request (at a small additional cost)



Mountain Halls: Caerphilly 'micro flats'

- £140 per week, 42-week contract, 19 'micro flats' available
- Suitable for singles/couples
- Compact 'micro-flat' consisting of en suite bathroom, fully-fitted kitchen and living space



Glamorgan Court

- Premium rooms (recently refurbished) £91 per week, 39-week contract, 520 rooms available
- Standard rooms £84 per week, 39 week contract, 210 rooms available
- Communal kitchen and dining space shared between six students
- Mini fridge in each room

Cardiff



Liberty Living: Tŷ Pont Haearn

- £99 per week, 42-week contract, 381 rooms available
- City centre location opposite ATRium campus
- Communal kitchen and spacious living area with TV, table tennis and pool tables
- Shared flats for three to six people



Liberty Living: The Bakery

- £99 per week, 42-week contract, 120 rooms available
- City centre location
- Three minute walk to Cardiff Central station (trains run directly to Treforest – approximately 20 minutes travel time)
- Spacious rooms with ¾ size beds
- Communal kitchen and spacious living area with TV and pool table

Private



Private Sector Houses (in Treforest and Cardiff)

The University of Glamorgan runs a registered landlords scheme where landlords must provide evidence to show that their property complies with the minimum national standards and regulations.

University registered properties can be found on www.glamorganstudentpad.co.uk where you can get information including:

- The number of rooms available in the property
- The cost per room, per week
- The deposit payable
- The length of the contract
- Contact details

A Letting Agency is also based in the Students' Union, where staff will assist you in looking for private sector accommodation.

For more information, visit www.glamorganstudentletting.com.

Take a closer look at our accommodation at www.glam.ac.uk/accommodation.



Premium Room, Mountain Halls

Glamorgan Sport

Glamorgan Sport covers all sport and recreation activities at the University, offering an impressive range of sports courses, facilities, clubs and qualifications. Our facilities are among the best in the UK and host a wide range of activities.

The Centre for Health, Sport and Exercise on our Treforest campus is open throughout the year. We have over 40 classes each week during term-time, from canoeing to climbing and squash to salsa. If you fancy something a little less energetic, you can always take time to unwind in the sauna and steam room. The facilities are open throughout the year, and a range of equipment is available for hire. The Centre has achieved Quest accreditation for the third successive year – this is the UK Quality Scheme for Sport and Leisure.

As part of our commitment to excellence, we have invested £3.7m in an additional purpose-built sport centre at Glamorgan Sport Park, three miles from the Treforest campus. There are 30 acres of playing fields with a pavilion, five floodlit pitches and two all-weather pitches, one of which is a FIFA approved, full-size 'rubber crumb' pitch. Our facilities are so good that many professional

teams regularly use them for training. The University has also been included within London's 2012 Pre-Games Training Camp Guide. For more information about Glamorgan Sport Park, visit www.glam.ac.uk/sport.

For ATRIUM campus students, we have also arranged an exclusive deal with a nearby health and fitness club. You and your partner can get reduced-rate membership, which includes a heated pool, gym, health spa with a steam room, sauna and hot tub, plus other discount offers.

University sports teams

Going to university doesn't mean you have to give up playing the sport you love. Glamorgan Sport embraces the different University sports teams that play in the British Universities and Colleges Sport (BUCS) leagues. For example, you could represent Glamorgan in sports such as rugby union, rugby league, football, golf, badminton, cricket, netball, squash, trampolining, table tennis, volleyball, basketball, or hockey.

For more information about Glamorgan Sport, visit www.glam.ac.uk/sport.



The Students' Union

The Students' Union is run for students by students. As a Glamorgan student, you will automatically get membership of the Union and can benefit from all it has to offer – from welfare and education support, representation, Union council, entertainment, fundraising and volunteering.

With Union facilities on every campus, we're always here for you – and you can enjoy what's on offer at any campus, no matter where you usually study.

Our latest addition is the brand-new Students' Union at Treforest. Since September 2010, Glamorgan students have been enjoying stunning facilities in a stylish building that is the social hub of the campus.

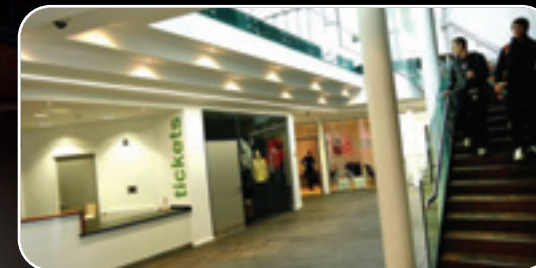
The whole building has wi-fi connectivity, so you can study or surf in the modern social learning spaces. When you don't have the time or the energy to cook, you can head to the cafes and bars that sell all kinds of coffees, smoothies, subs and salads. In this warm and friendly atmosphere, you can catch live sport on the big screen, enjoy a meal, or just chill out on the sun terrace. When the sun goes down there is plenty to keep you entertained – from live bands and quiz nights, to film screenings and theme nights, you'll never get bored. You can see inside the new Students' Union by watching our video online: www.glam.ac.uk/students-union

The new Union at Treforest is for all Glamorgan students, regardless of where you study. But you'll also find new Union facilities at ATRiuM and Glyntaff, so the support you need is never too far away. Escape is a brand-new bar at the ATRiuM campus, where you can meet with friends or take a break from your studies. You can enjoy meals from our healthy menu, or order hot and cold drinks in this friendly bar. At night, the place is transformed to offer an exciting programme of events, from open mic nights to live music. At Glyntaff, there are exclusive social spaces where you can take a break, unwind or catch up with friends. As well as socialising, there is a shop and support staff at Glyntaff and ATRiuM to meet your everyday needs.

Clubs and societies

At Glamorgan, you can join a sports team or a society such as the International Student Society and many more. Whatever your passion, from human rights to big band music, there's a club or society for you. You can also start your own society! If you join a society, you will meet lots of new people and get involved in all sorts of activities, from demonstrations to days out. Most importantly, you will get more out of your time at university – it's your chance to try something completely new or keep up existing interests. The Union also has day and night events you can attend, from meals, discos, cultural events, fun days, market days, fundraising and much more.

More information about all of the Union's services can be found at www.glamsu.com.



Resources

At Glamorgan, you will find all the resources you need to make sure your university experience runs as smoothly as possible.

Library and Media Services

The University's library and media services are located in the Learning Resources Centres (LRC) providing:

- Thousands of books and journals, available electronically and in print
- Library induction for new students
- A library help and enquiry service
- Open access PCs
- Laptop loan and wireless internet access
- Long opening hours and self-service facilities
- 800 individual and group study areas
- Photocopying, printing and scanning facilities
- Specialist media equipment and facilities
- Academic study skills support
- Help for students with a disability or dyslexia

For further information, visit www.glam.ac.uk/lrc.

Student Profile



attracts thousands of international students from all over the world, so studying here has given me an opportunity to connect to the world."

"Glamorgan is a fantastic place to study; the campus is modern and there is plenty of support for students. The campus also has many PC labs and the LRC (Learning Resources Centre) offers a wide range of useful resources. The University

**Danzhu Li, China
MBA**

Information Systems

This department supports the University's learning, teaching and research by providing up-to-date and effective computing and communication services.

Information Systems provides:

- Over 2,000 computers in open access and bookable teaching labs (across the three campuses)
- A dedicated Customer Support Service to assist you six days a week (term-time) – face-to-face, on the telephone, or by e-mail
- Long opening hours – 24-hour open access facility, plus other labs 8.30am-8pm, Monday to Friday, and 9am-5pm on Saturdays (term-time)
- The University's Virtual Learning Environment (VLE) – called Blackboard
- Printing facilities
- Assistance with purchasing computer hardware and software
- Maintenance of and access to systems, including networks, e-mail, internet, accounts, passwords and web pages

Further information on our services can be found at www.glam.ac.uk/it-services.

Glamlife

The Glamlife website has all the information you will ever need for student life at Glamorgan, and a little bit more! This site keeps students up-to-date with the latest events, news, teaching resources, support and developments. Our Getting Started@Glam section has vital information for new students that will help you get the most out of your first few weeks at Glamorgan.

Visit www.glam.ac.uk/gettingstarted for a taste of student life before you arrive.



Careers & Employability Service

The University's Careers & Employability Service provides professional and practical advice on a wide range of opportunities. Our friendly staff are keen to help international students work towards a successful career. We provide impartial and realistic advice and guidance and can help you:

- Consider your career options and help you make appropriate decisions
- Help you think about your skills, interests and abilities, and how these could relate to your career
- Learn the practicalities of job hunting, like writing an effective CV, making good-quality job applications and preparing for interviews

Careers Advisers are available to see students at Treforest, ATRIUM and Glyntaff campuses. For full details, visit www.glam.ac.uk/careers.

Did you know?

Undergraduate and postgraduate students can work for up to 20 hours per week during term-time, and full-time during holidays.



Support Services

At Glamorgan, you will find all the support you need. If you want any information, advice or guidance on any emotional, financial or medical issue, there is a network of people ready to help.

International Student Support Service

Our advisers at the International Student Support Service (ISSS) are dedicated to the welfare of international students. They will make sure that you have all the help and support you need before you arrive and during your studies at Glamorgan.

ISSS staff can help you with any non-academic, welfare-related issues such as visa extensions, employment regulations, orientation and adapting to a new culture. They organise social activities throughout the year, promote volunteering opportunities, and recruit Global Assistants from the student body to help with the social and pastoral care of Glamorgan's international students.

The ISSS team also works closely with the Glamorgan Students' International Society (GSIS) to support and promote international student activities.

For more information, visit www.glam.ac.uk/intsupport or e-mail intsupport@glam.ac.uk.

Counselling and Wellbeing

Being a student and living in a new country can be completely different from the life you led before and it's understandable that you may have a few problems along the way. You don't have to get through it alone – the Counselling and Wellbeing Service is here to listen and help, whether your problem is financial, emotional or educational. Counsellors assist you to explore your situation and make appropriate choices. Counsellors and advisers provide a confidential and professional service. Find out more at www.glam.ac.uk/counselling.



Trip to Abergavenny Castle



Arrival Services

To make your travel arrangements to the University as easy as possible, the University organises Arrival Services for when you first arrive in the UK. These services are available throughout the year from Cardiff International Airport (CIA) and Heathrow Airport, London.

We recommend that you arrange your flight to land at CIA. On request, we can arrange a free taxi service from CIA to your accommodation at the University of Glamorgan (Treforest or ATRIUM campuses). If you arrive at Heathrow Airport, we can arrange for a University representative to meet you there and help you with the rest of your journey to Glamorgan. Please note, this is not a pick-up service and our representative will neither transport you nor travel with you to the University.

It is important to remember that you must request the Arrival Services at least five working days before you intend to travel. For more information about this service, including a booking form, visit www.glam.ac.uk/arrivalsservices.

Student Profile



"The students on this programme are from diverse countries and cultures and it is really international, which appeals to me. I have made friends from all over the world. I was also very pleased to get a part-time job, where I work alongside local people and other students from around the world. The Welsh people are friendly, polite and warm-hearted, and the lifestyle is not as hectic as in China."

Huali Xiong, China

MSc International Business and Enterprise

Find us on Facebook. Search for 'University of Glamorgan International Office'.



Trip to Cosmeston Lakes

International Welcome Activities

To help you settle in and make new friends before your course starts, the International Student Support Service organises international welcome activities. These are a great chance to learn more about University life before starting your studies. You can find out essential information, make new friends, meet members of staff and find your way around the University and the local area. For more information about international welcome activities that will be on offer when you start, visit www.glam.ac.uk/welcome.

Student Money Service

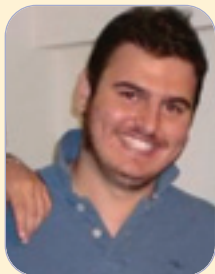
The Student Money Service has one of the largest teams of dedicated student money experts in the UK. Licensed and highly-trained staff can advise you on any aspect of student finance, from fees and scholarships to budgeting. For more information, e-mail stufin@glam.ac.uk or visit www.glam.ac.uk/money.

Health Service

The Health Centre at our Treforest campus offers a nurse-led, walk-in service with a wide range of advice and referral options. The Centre is open Monday to Friday. Regular GP surgeries are held at the Health Centre and ATRIUM campus.

Please refer to page 37 or www.glam.ac.uk/international for details about what you should do before coming to the UK to study. More general information about health is available from www.ukcisa.org.uk.

Student Profile



"I came to the UK because the education is much better here than Turkey. Cardiff is one of the most secure cities in the UK and if you want to learn English, I advise you to come here. The lecturers and staff are really helpful and whenever you need advice you can just knock on their door."

Ismail Camkaya, Turkey
BEng (Hons) Aeronautical Engineering

Student Profile



"Something every international student should do is visit the International Welcome Week. I felt welcomed as soon as I had arrived and met a lot of other international students. You do lots of fun activities during that week and get to know your way around. It is a big step moving to another country, away from everything you know, but the University and the friends I have made has made it very easy for me to settle in."

Johanna Fredriksson, Sweden
Media student

Disability and Dyslexia Service

The Disability and Dyslexia Service provides a specialist service that offers support, advice and assistance to students with a disability or specific learning difficulty. Please make sure that you contact us prior to enrolment to discuss any support requirements. For more information, e-mail studisability@glam.ac.uk or visit www.glam.ac.uk/disability.

Religion/Places of Worship

The University welcomes students with different cultures and faiths from over 60 countries. The Chaplaincy is rooted in the Christian tradition, but is an inclusive service and gives support to people of all faiths and none. Islamic prayer facilities are located on the Treforest campus.

The team of staff is made up of the Chaplain, part-time chaplains, volunteers and faith advisers. They can help you with any questions you have about practising your faith and have information about religious groups and activities on campus, as well as churches, temples, synagogues, gurdwaras or mosques in the local area. For more information, e-mail chaplaincy@glam.ac.uk or visit www.glam.ac.uk/chaplaincy.

Alumni

At Glamorgan, we hope you will make friends for life. Our graduates can be found throughout the world in over 100 countries. There are many international alumni associations, which allow graduates to meet regularly and catch up with the latest news from the University.

The Glamorgan International Alumni group gives students who are thinking about enrolling at the University an opportunity to talk to former students about their experiences at Glamorgan.

Joining the Glamorgan International Alumni group on Facebook is an opportunity for former students to reconnect and interact with each other, as well as meet fellow alumni from across the globe.

We regularly hold alumni events around the world to celebrate the relationship Glamorgan has with its international graduates.

For more information, visit www.glam.ac.uk/alumni.



China



Mexico



Zambia



Bahrain



Treforest and Glyntaff Campus Maps



Treforest

- | | |
|--------------------------------------|---|
| 1. Gatehouse and Main Reception | 20. Childcare Services |
| 2. Tŷ Crawshay (A Block) | 21. Learning Resources Centre |
| 3. Brecon (B Block) | 22. Glamorgan Print |
| 4. Cynon (C Block), Student Services | 23. The Meeting House (Chaplaincy)
– Islamic Prayer Facilities |
| 5. Kidwelly (K Block) | 24. Accommodation Reception |
| 6. Dyffryn (D Block) | 25. Glamorgan Court A-V |
| 7. Glynneath (G Block) | 26. Mountain Halls |
| 8. Aerospace Centre | 27. Amphitheatre and Communal Block |
| 9. Hirwaun (H Block) | 28. 2-7 Forest Grove |
| 10. Johnstown (J Block) | 29. 8 Forest Grove |
| 11. Ferndale | 30. Academic Registry (1 Llantwit Road) |
| 12. Wenvoe (W Block) | 31. HR (3 and 14 Llantwit Road) |
| 13. The Meeting House (Chaplaincy) | 32. Postgraduate Centre |
| 14. Health Centre (T Block) | 33. Prospect House |
| 15. Glamorgan Conference Centre | 34. Innovation House |
| 16. Students' Union and Shop | 35. Academic Registry
– Main Reception and Enquiries |
| 17. Sports Centre | 36. Welsh Institute of Chiropractic |
| 18. Treforest Woodland Walk | |
| 19. Stilts Food Court | |

Lower Glyntaff

- 37. Reception/Security Lodge
- 38. Tramsheds
- 39. Elaine Morgan Building
- 40. Learning Resources Centre
- 41. Welsh Institute for Health and Social Care
- 42. Aneurin Bevan Building
- 43. The Family Institute

Upper Glyntaff

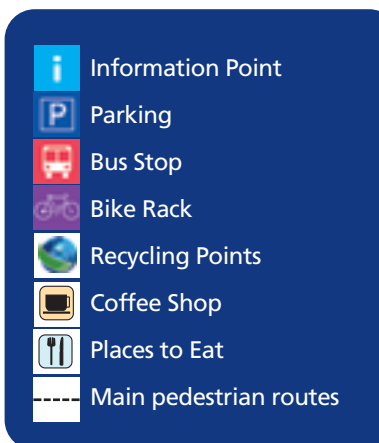
- 44. Professor Bernard Knight Building
- 45. Alfred Russel Wallace Building
- 46. George Knox Building

Glamorgan Sport Park

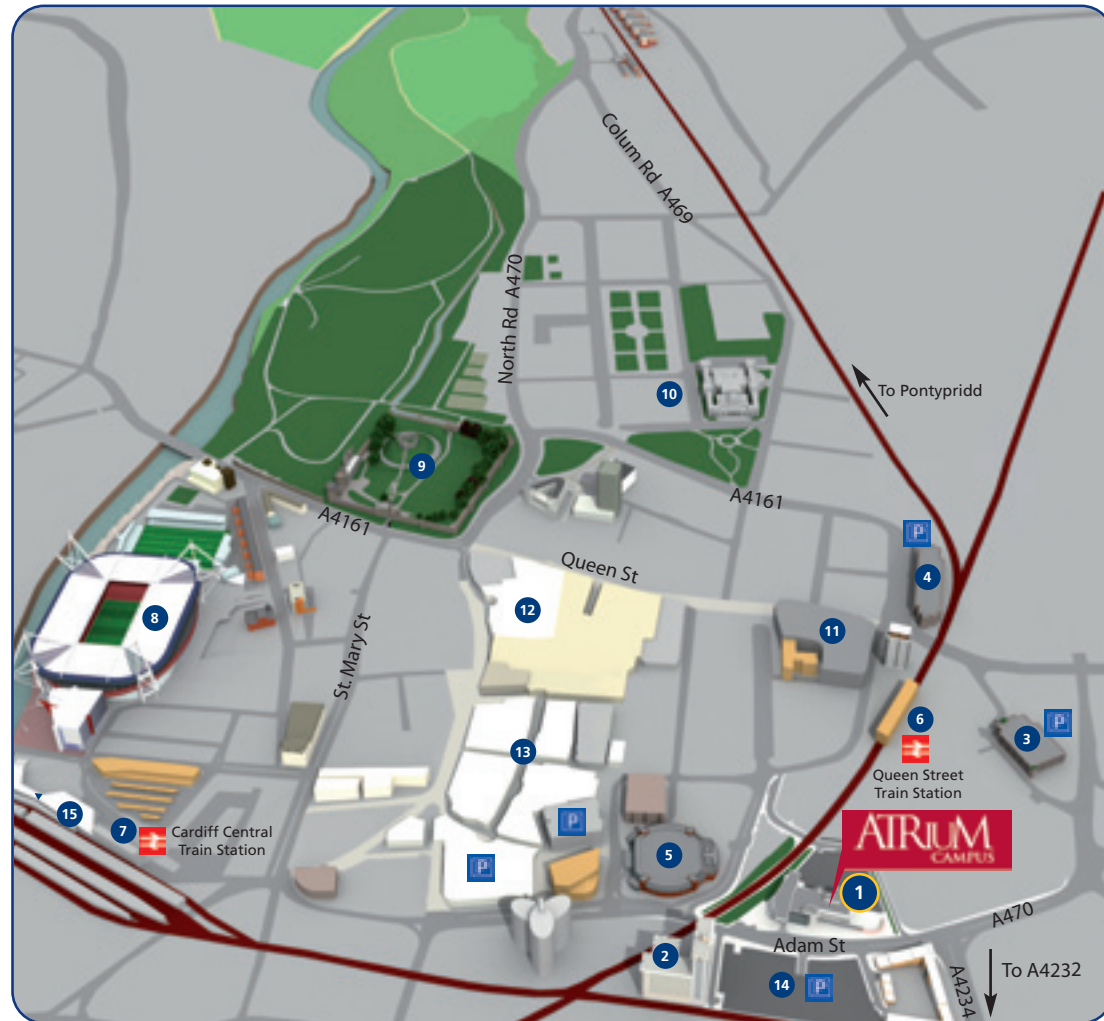
- 47. Main Hall
- 48. The Pavillion
- 49. Groundsman's House
- 50. ATP Floodlit
- 51. 3G Pitch

Faculty Advice Shops

- BS** Faculty of Business and Society
+44 (0)1443 482 955
- AT** Faculty of Advanced Technology
+44 (0)1443 482 540
- He** Faculty of Health, Sport and Science
+44 (0)1443 654 355
- CCI** Cardiff School of Creative & Cultural Industries, ATRIUM, Cardiff
+44 (0)1443 668 541 (see page 52)



Cardiff Map with ATRium Campus



- | | |
|---|---|
| <ul style="list-style-type: none"> 1. ATRium Campus 2. Tŷ Pont Haearn 3. Knox Road Car Park 4. Dumfries Place Car Park 5. Cardiff Motorpoint Arena 6. Queen Street Train Station 7. Cardiff Central Train Station 8. Millennium Stadium 9. Cardiff Castle and Grounds | <ul style="list-style-type: none"> 10. City Hall and Cathays Park 11. Capitol Shopping Centre 12. Queens Arcade 13. St David's Shopping Centre 14. Adam St Car Park 15. The Bakery (opposite Millennium Stadium) Railway line Train Station Parking |
|---|---|



ATRium Campus, Cardiff



Additional Information

Student Charter

The University has a Student Charter that sets out the rights and obligations of its students. As part of your obligations, you need to be aware of the Rules and Regulations of the institution that govern student conduct, which include specific regulations relating to the use of computing and learning resource facilities. You should be aware of these issues before you enrol and sign your enrolment form. Rules and Regulations are available on the University's website at www.glam.ac.uk/regulations, or you can contact your Faculty for a hard copy.

Data Processing

The University collects and processes personal data about its students through the enrolment process, for the purposes of delivering your course and support services. Information on the University's obligations under the Data Protection Act 1998 and the use made of the data on its students is available on the University's website, www.glam.ac.uk/dataprotection, or in hard copy by contacting the University on +44 (0)1443 654 450.



Enquiries & Admissions

Our Enquiries & Admissions Unit has been awarded the internationally recognised ISO 9001:2008 accreditation following an independent quality management audit of processes and practice. Certification relates specifically to handling student enquiries and applications to study at the University.



Fairtrade

Glamorgan is a Fairtrade university. The Fairtrade Foundation granted us this status to recognise what we are doing to help create a fairer and safer world. Look for the Fairtrade logo when you shop. For more information, visit www.fairtrade.org.uk.



Environmental Policy

We are proud of our commitment to the environment and were the first university in the UK to be awarded the ISO14001 standard for the quality of our environmental practices and teaching. We have an extensive recycling programme and an award-winning Travel Plan that encourages people to choose sustainable alternatives such as cycling, walking and public transport. We are also committed to reducing our carbon dioxide emissions and combating climate change. For more information, visit www.glam.ac.uk/sustainability.

Contact Details

If you have read this booklet and have any questions or need further information, now is the time to contact us. Below is a list of names and contact details of people who can help you:

For course-related enquiries, contact your Faculty/Admissions tutor.

Application enquiries for international (non-EU) students contact:

Enquiries & Admissions Unit

Tel: +44 (0)1443 654 450

Fax: +44 (0)1443 654 050

E-mail: international@glam.ac.uk

Web: www.glam.ac.uk/international

Accommodation enquiries contact:

Accommodation Services

Tel: +44 (0)1443 482 044

Fax: +44 (0)1443 482 967

E-mail: accom@glam.ac.uk

Web: www.glam.ac.uk/accommodation

Application enquiries for EU students contact:

Enquiries & Admissions Unit

Tel: +44 (0)1443 654 400

Fax: +44 (0)1443 654 050

E-mail: enquiries@glam.ac.uk

Web: www.glam.ac.uk/international

UKCISA – UK Council for International Education contact:

Tel: +44 (0)207 107 9922

Web: www.ukcisa.org.uk

UK Coach enquiries contact:

Web: www.nationalexpress.com

UK Rail enquiries contact:

Tel: +44 (0)207 278 5240

Web: www.nationalrail.co.uk

Immigration, meet and greet, and non-academic enquiries contact:

International Student Support Service

Tel: +44 (0)1443 482 080

Fax: +44 (0)1443 482 799

E-mail: intsupport@glam.ac.uk

Web: www.glam.ac.uk/international/meetandgreet



Tŷ Crawshay, Treforest Campus