



**Kingston  
University**  
London

POSTGRADUATE  
PROSPECTUS  
2012

ART, ARCHITECTURE, DESIGN, SURVEYING & PLANNING

WANT TO GO FURTHER?  
A POSTGRADUATE COURSE AT  
KINGSTON CAN TAKE YOU FAR.  
WE'RE RANKED AMONG THE  
TOP TEN IN THE UK FOR ART  
AND DESIGN.







“Kingston University’s Faculty of Art, Design & Architecture has a rich and expanding postgraduate community, and we hope you will find the course you are looking for and join us.

“Our courses are led by great staff and supported by impressive workshops that combine both the traditional and the very latest technologies. In 2011, the *Guardian* newspaper ranked our art and design courses as among the 10 best in the United Kingdom.

“The Faculty has a long and successful history, with the original School of Art founded in the 1890s. However, the Faculty is committed to the future and the ways in which our courses and students will play a part in forming and improving the world – locally, nationally and internationally. In particular, our MA Design for Development and MA Design for Health and Wellbeing exemplify our commitment to social and ethical approaches to art, design and built environment education, and we also have a commitment to sustainability running through all our courses. New courses for 2012 include MA Experimental Film, MA Fashion Journalism and MFA Fine Art.

“Many of our courses are developed in collaboration with related industries and institutions, which inform and finance many student projects. These partnerships provide dialogues that ensure we are influential and ground breaking. We are also committed to providing an international context, and have strong links and ongoing projects with institutions in China, Japan and Southern Africa.

“Finally, we count many of Britain’s most successful creative practitioners among our graduates. We have awarded honorary doctorates to Fiona Banner, David Chipperfield, James Irvine, Jasper Morrison, Shelley Page and, this year, Matthew Hilton – all former students. We hope you too will begin to realise and develop your ambitions here at Kingston University.”

**SIMON OFIELD-KERR PhD FRSA, DEAN**

Faculty of Art, Design & Architecture  
Kingston University  
Knights Park  
Kingston upon Thames  
Surrey  
KT1 2QJ  
T +44 (0)20 8417 4646  
[www.kingston.ac.uk/fada](http://www.kingston.ac.uk/fada)

Cover image: *Seeing Myself Seeing*, 2009, Elaine Wilson.  
Elaine is a technician in the fine art area of our 3D workshop,  
and a successful practising artist. [www.elainewilson.co.uk](http://www.elainewilson.co.uk)

# CONTENTS

## GENERAL INFORMATION

Choose Kingston	2–9	Research in the Faculty	56
Welcoming International students	10–13	Research groups and centres	58
Working with top organisations	14	Studying at Kingston	60
Stanley Picker Gallery	50	How to apply	62
		Disclaimer	63

*\*Subject to validation*

## SUBJECT AREAS AND COURSES

<b>Architecture &amp; Landscape</b>	<b>16</b>	<b>3D Design</b>	<b>38</b>
Architecture (Design) MArch	20	Health and Wellbeing MA/MSc	40
Architecture: Thinking Building MA	20	Design: Product & Space MA	40
Graduate Diploma Architecture (ARB/RIBA Part 2)	20	Production Design for Film & Television MA	40
Professional Practice (Architecture) (ARB/RIBA Part 3 exemption) PgDip	20	<b>Fashion</b>	<b>42</b>
Professional Practice Architecture MA	21	Fashion MA	43
Landscape & Urbanism MA	21	Fashion Journalism MA	43
Landscape Architecture PgDip	21	Fashion Marketing* MA	43
<b>Art &amp; Design History</b>	<b>22</b>	Fashion Retail* MA	43
Art & Design History MA	24	<b>Digital Media</b>	<b>44</b>
Art Market Appraisal MA	24	Games Development MA/MSc	45
Professional Practice (Design) MA	24	User Experience Design MA/MSc	45
Film Studies MA	24	3D Computer-Generated Imagery MA/MSc	45
Heritage (Contemporary Practice) MA	25	<b>Fine Art</b>	<b>46</b>
Museum & Gallery Studies MA	25	Art & Space MA	48
<b>Philosophy</b>	<b>26</b>	European Art Practice MA	48
Aesthetics & Art Theory MA	27	Experimental Film MA	48
Modern European Philosophy MA	27	Fine Art with Learning and Teaching in HE MA	48
Philosophy & Contemporary Critical Theory MA	27	Fine Art MFA	49
<b>Creative Industries &amp; the Creative Economy</b>	<b>28</b>	Photography MA	49
Pathways in Communication Design, Fashion Design, Product & Space, Museums & Gallery Studies	31	<b>Surveying &amp; Planning</b>	<b>52</b>
<b>Communication Design</b>	<b>32</b>	Art Market Appraisal MA	54
Graphic Design MA	36	Building Surveying MSc	54
Illustration & Animation MA	36	Historic Building Conservation MSc	54
Motion Graphics MA	36	Planning & Sustainability MA	54
Curating Contemporary Design MA	36	Quantity Surveying MSc	55
Design for Development MA	37	Real Estate MSc with additional pathways in:	
Design with Learning and Teaching in HE MA	37	– Development & Investment	55
film making MA	37	– Sustainable Asset Management & Valuation	55
Professional Practice (Design) MA	37	Sustainability for Built Environment Practice	55
		Sustainable Place Making & Urban Design MA	55





### EVERYDAY DELIGHTS

For their final project, MA Curating Contemporary Design students Julia Jarvis and An Michiels asked London's designers to reinvent the standard yellow duster. Julia and An sent invitations (and a duster) to 50 handpicked designers and also held an open competition through a design website. Responses included dresses, artworks, a sunglasses' case, a robot, a picture frame, an umbrella, a pair of baby booties, a portable seat, a bra and even a pair of pants. They exhibited the 100 best ideas at Tent London (at the Truman Gallery in Brick Lane, where we hold our postgraduate degree show), under the title 'Everyday Delights'. A postcard book created for the exhibition is now for sale at the Design Museum. For more information on Julia and An's work, see [www.jjam.info](http://www.jjam.info)





“[KINGSTON] HAS A TRACK RECORD OF TURNING OUT EMPLOYABLE GRADUATES AND ENTREPRENEURS, WITH MORE THAN 100 START-UPS CREATED EACH YEAR.”

THE TIMES GOOD UNIVERSITY GUIDE 2010







## GET CONNECTED

We have a thriving academic community here at Kingston, with many staff members working as artists, designers, architects or surveyors alongside their teaching. This means you can share their specialised and in-depth knowledge.

All of our art and design courses are closely linked with the creative industries, while our surveying and planning courses have strong links to the surveying industry's professional bodies (the Royal Institution of Chartered Surveyors, the Royal Town Planning Institute), and our architecture courses have close links with the Royal Institute of British Architects.

In addition, industry experts often teach and even contribute to the design of our courses, helping to enhance your studies and ensure that you graduate as a marketable industry professional.

Our industry connections mean that:

- we can ensure that your work is seen by eminent people in the profession;
- we run 'live' projects;
- we can arrange work placements within prestigious companies or institutions;
- we often organise site visits;
- you will be able to carry out project work with visiting expert lecturers; and
- you can attend workshops and talks with industry specialists.

## LOCATION, LOCATION

We're close to central London, giving you access to all the inspiration and opportunity the city has to offer. Leading organisations, museums, galleries and events are within easy reach.

In recent years, our postgraduate degree shows have been held at the Truman Brewery on Brick Lane (pictured), giving exposure to our students' work in the heart of East London's creative community.

## BE ENTERPRISING

Our graduates can be found in leading practices across the world. Many have gone on to establish their own businesses and, in turn, employ new Kingston graduates.

All our courses are designed to prepare you for professional practice; however, if you're looking for more-specific business and leadership training alongside your creative development, you could consider one of our unique programme of MA Creative Economy degrees – see p28.

We also supply lots of support for entrepreneurs at Kingston – eg mentoring, knowledge sharing, sponsored competitions, networking opportunities – so if you're interested in starting a business or marketing a new product, we can help. For more information on entrepreneurship at Kingston, see:

<http://kingstonentrepreneurs.co.uk/>

Left: Our postgraduate degree shows have recently been held at the Truman Gallery in Brick Lane, East London. Image courtesy of Guy Montagu-Pollock





“WE SEE HUGE POTENTIAL  
IN COLLABORATION WITH  
OTHER DISCIPLINES.”

SHAUN YOUNG AND WILL PIRKIS,  
GRADUATE DIPLOMA IN ARCHITECTURE





## WORK TOGETHER

We're keen to encourage working together at Kingston, so many of our courses will give you the opportunity to team up with students from other disciplines. For example, our Digital Media Kingston courses run both MA and MSc routes, enabling arts and science students to collaborate on projects, as they would in industry.

The structure pictured left is a further example of this approach. It was designed by postgraduate architecture students Shaun Young and Will Pirkis for our BA(Hons) Fashion Pavilion at Graduate Fashion Week 2011. Shaun and Will took the brief from the fashion team, then used surface drawings by Robert Adam as their inspiration. The designs were printed onto translucent fabric and stretched over a timber frame in our workshops. "Fashion and architecture have shared concerns: seams, joining, structure and material," said Shaun and Will, "So, in this case, the relationship between the two areas was fruitful."

## MAKE IT REAL

The Graduate Fashion Week pavilion was made in our 3D workshop, and this is another area where we have a strong focus. Whether we are speaking about fashion or architecture, surveying or product design, at Kingston all students are grounded in the materiality of their disciplines; we are still making things at Kingston.

To support this emphasis, we've recently invested heavily in our campus to provide great workshops and the latest equipment. Our 3D materials workshop enables you to work with materials such as wood, metal, stone, plastic, plaster, bio-resins, wax and ceramics. The workshop is open to everyone – from fashion students using the leather-cutting equipment to landscape architecture students making models.

Other facilities include:

- Our Architectural Science & Technology Laboratory ('ArchiLab') – see p17
- A filming environment and animation suite which includes a large filming space (with infinity cove, professional film blue screen and all the kit you need to use it), plus professional-standard equipment for post-production, animation and sound recording
- A professional photography suite with two new digital darkrooms
- A print room for intaglio, lithography, screenprint and collagraphy
- A newly specified, open-access digital workshop

Our specialist support and technical staff will help you get the most from our facilities. For find out more about what's on offer, see [www.kingston.ac.uk/fada/facilities](http://www.kingston.ac.uk/fada/facilities)

## NEW DEVELOPMENTS

We're developing our Knights Park campus to make the environment more open and creative for our students. At the time of writing, work was in progress on covering a courtyard with a glass roof. This will create a bigger and better Learning Resources Centre (LRC). For more information on our LRC, see p60.



“I NEVER KNOW EXACTLY WHAT SOMETHING IS GOING TO TURN OUT LIKE IN ADVANCE BECAUSE THE PROCESSES ARE STILL VERY EXPERIMENTAL.”

EMILY CRANE, MA FASHION GRADUATE 2010





## DO IT DIFFERENTLY

Explore, experiment, investigate. Never be afraid to try something new. At Kingston, much of your time will be spent investigating new areas of practice, creating sophisticated, considered solutions to the complex challenges created by modern life.

For example, our Fashion MA is renowned for fashion innovation. Its unique focus enables designers to question the role of the fashion designer and the body in the 21st century, seeking out the new and defining and devising new ways to design for a world we don't yet know.

2010 Fashion graduate Emily Crane reflects this ethos. Emily is one of a new breed of designers who is pushing the boundaries of design through materials and process, growing, cultivating and forming new hybrid materials for fashion. She worked with chemists, culinary experts and futuristic couturiers during her MA, creating edible garments and accessories 'grown' from gelatine, seaweed and food dyes. Emily's designs have been featured in media such as *The Times* and *Evening Standard* newspapers, *Vogue Italia* blog and the *Financial Times* blog.

Whichever course you choose, we'll encourage you to take risks and try new approaches. It's like setting off into the unknown – who knows what you'll find?

## SEE IT DIFFERENTLY

The culture of innovation at our Knights Park campus continues in the Stanley Picker Gallery, located just across the river from the main building. The Gallery, which is run by the University and organises a challenging and experimental programme, was one of just a handful of new London arts venues to receive funding under Arts Council England's new National Portfolio Funding programme. Our students often get involved in teaching and community events at the Gallery. For more information, see p50.

Left: Edible fashion by Emily Crane  
[www.emilycrane.co.uk](http://www.emilycrane.co.uk)



“THERE IS AN UNPRECEDENTED ENTHUSIASM IN BOTH CHINA AND THE UK TO DEVELOP CONTEMPORARY CULTURE AND REINFORCE COLLABORATIONS WITH THE REST OF THE WORLD.”

FENG SUN, SINO-BRITISH FELLOWSHIP TRUST SCHOLARSHIP HOLDER,  
CURATING CONTEMPORARY DESIGN MA





## THINK GLOBAL

As a graduate of the Faculty of Art, Design & Architecture at Kingston, you'll be working in a global economy. So, our vision is for students to think internationally; to respond to different opinions, approaches and people; and to be the proactive generation that shapes the future with an understanding of the realities of other cultures.

All of our courses offer opportunities for interaction across countries and continents; for example, you may be working with colleagues from the UK, Asia, USA, Europe (East and West), Africa, South America – in fact, from anywhere across the world.

## SHARE KNOWLEDGE

Group activity and interaction are at the core of our teaching. Our postgraduate courses are led by staff who are recognised leaders in their fields and whose research connections and collaborations reach across continents, which in turn create additional opportunities for students.

For example, Innovation Greenhouse, a project curated by students from our MA in Curating Contemporary Design, was the result of a collaboration between students and staff from Kingston University and the China Academy of Art, Hangzhou. For one month, staff and students from both institutions worked together on a brief set by the British Council, which challenged students to explore the legacy of the 2010 Shanghai Expo. Students presented their project ideas at the Design Museum in London and at the UK Pavilion in Shanghai; Innovation Greenhouse was chosen to represent this UK/China collaboration during the London Design Festival. The project involved the entrance tunnel to the V&A being converted into a living greenhouse, inviting visitors to consider the relationship between design and the natural world.

Other international universities we work with include Central Academy of Fine Arts Beijing, China; Hongik Seoul, Korea; Nagoya, Japan; and Rhode Island School of Design, USA.

## DESIGN FOR THE FUTURE

Sustainability is a key theme of research at Kingston University and extends into many of our teaching activities. For example, we offer an MA in Design for Development (see p37), which has links with leading thinkers from the field and has worked closely with organisations such as the Design Council, Sorrell Foundation, ThinkPublic and the Audi Design Foundation.

In 2011, we launched our sustainable materials library, Rematerialise, at EcoBuild, the world's largest event for showcasing sustainable design and construction practices. Researchers at the University have catalogued more than 1,000 different sustainable materials for use in the construction industry, from insulation made from mushrooms, to kitchen tops created from recycled glass.

For more information on sustainability at Kingston, see [www.kingston.ac.uk/sustainability](http://www.kingston.ac.uk/sustainability)

Left: Poster from Innovation Greenhouse, a collaboration between students in Kingston and China

# INTERNATIONAL STUDENTS

If you're thinking of coming to the United Kingdom (UK) for your postgraduate studies, Kingston can offer you excellent courses in a supportive environment.

Students from all over the world have achieved success at Kingston; we currently welcome students from more than 150 countries, ranging from Australia to Zambia.

We offer a range of support services, from the moment you arrive in the UK, designed to ensure that you feel at home in our vibrant, multicultural community – for more information, see the next page.

## WHY CHOOSE KINGSTON?

Kingston University is one of the top universities for teaching in the UK and has achieved strong results in national assessments of teaching quality. In 2008, the *Sunday Times* newspaper placed Kingston 32nd out of 120 UK universities for teaching excellence. In 2011, the *Guardian* newspaper's *University Guide* ranked art and design courses at the University as the 10th best in the UK. Our courses place an emphasis on developing work-based skills and many have close links with industry.

## LIVING IN KINGSTON UPON THAMES

Kingston upon Thames is located on the south-west edge of London, around 12 miles (19km) from Trafalgar Square. You can travel by train from Kingston to Waterloo Station in central London in approximately 25 minutes.

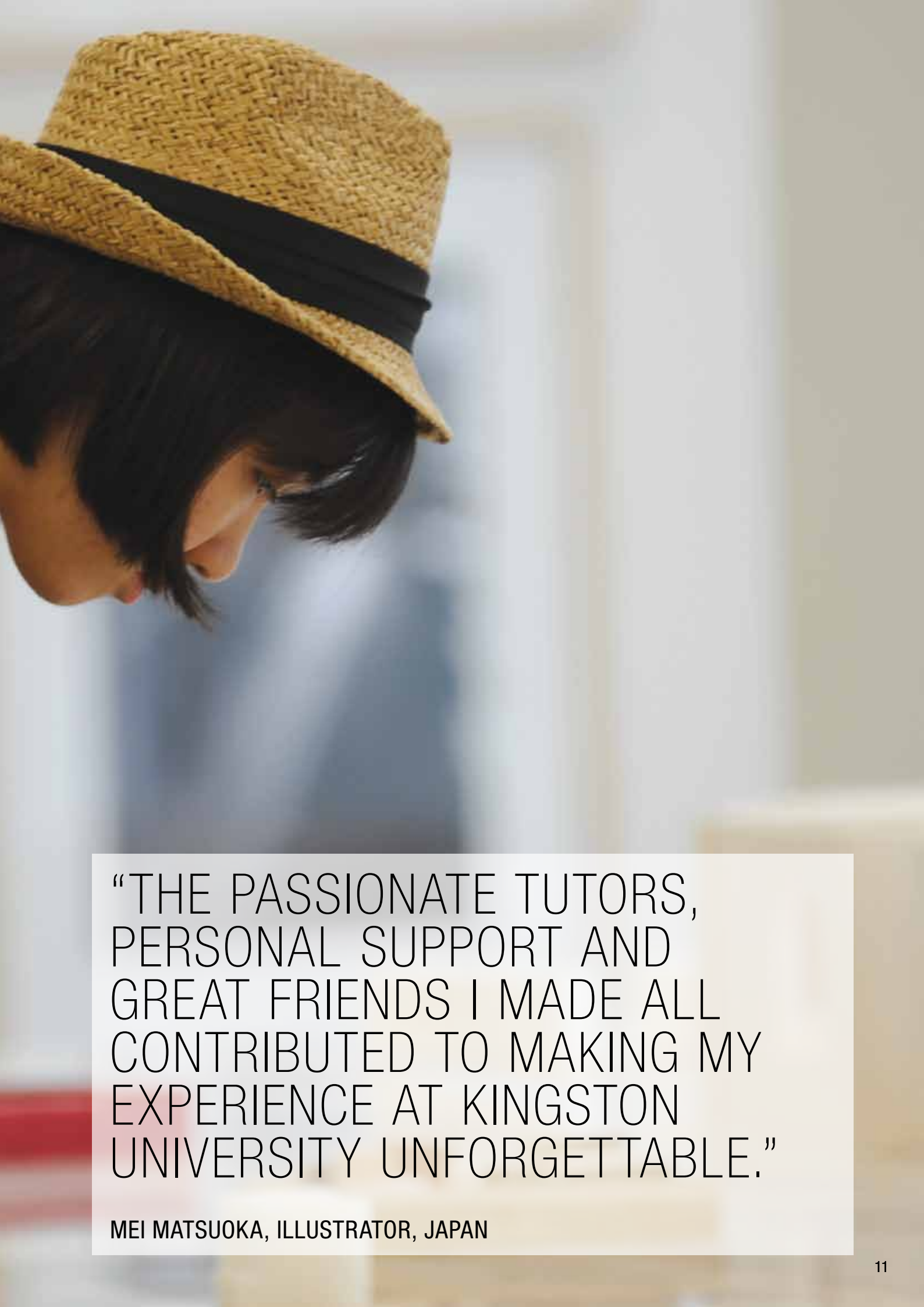
Our location means you can study in a safe, attractive part of the city, away from the crowds of the centre but with easy access to all its attractions.

Kingston is a great place in which to experience life in the UK. Although part of Greater London, it's a busy town in its own right, packed with historic buildings, great shops and leisure venues. The town is situated by the river Thames and close to Richmond and Bushy Parks, so there's lots of open space to enjoy.

If you want to explore the UK and Europe during your studies, it's easy to do this from Kingston. Eurostar trains connect London to Europe, and London Heathrow and Gatwick airports are close by.







“THE PASSIONATE TUTORS,  
PERSONAL SUPPORT AND  
GREAT FRIENDS I MADE ALL  
CONTRIBUTED TO MAKING MY  
EXPERIENCE AT KINGSTON  
UNIVERSITY UNFORGETTABLE.”

MEI MATSUOKA, ILLUSTRATOR, JAPAN

# SUPPORT FOR INTERNATIONAL STUDENTS

## ARRIVING IN THE UK AND SETTLING IN

When you arrive, we will help you adapt to your new life in the UK by meeting you at the airport and showing you around the University and the local area. You will also have the opportunity to meet staff and other international students at our welcome and orientation events.

In addition, we run social events for international students throughout the year.

## ENGLISH LANGUAGE

If your first language is not English, you will need to demonstrate a good standard of written and spoken English as an entry requirement onto our postgraduate courses (see each course webpage for more details). However, before the start of the academic year, we offer a pre-sessional English course to help you develop the language skills you will need for postgraduate study – see [www.kingston.ac.uk/preessional](http://www.kingston.ac.uk/preessional). Once you start your postgraduate studies, you can join the University's free English Language Development Programme.

## ACCOMMODATION

International (non-EU) students who apply for halls accommodation in good time are guaranteed an offer of accommodation for our halls of residence during their first year (providing they meet our eligibility criteria). For more details, see [www.kingston.ac.uk/pgaccommodation](http://www.kingston.ac.uk/pgaccommodation)

## SCHOLARSHIPS

We offer a large number of postgraduate scholarships for international students every year. See [www.kingston.ac.uk/scholarships](http://www.kingston.ac.uk/scholarships) for details.

## WORKING IN THE UK AFTER YOUR STUDIES

International students who have successfully completed their studies may be able to work in the UK. For details, see:

- [www.ukba.homeoffice.gov.uk/workingintheuk](http://www.ukba.homeoffice.gov.uk/workingintheuk)
- [www.ukcisa.org.uk/student/working\\_after.php](http://www.ukcisa.org.uk/student/working_after.php)
- [www.educationuk.org](http://www.educationuk.org) (for the guide 'Find your way to work')

## FIND OUT MORE

To find out more about Kingston University, and to download our *International Student Guide*, see [www.kingston.ac.uk/international](http://www.kingston.ac.uk/international)

**“I FOUND THE PRE-MASTER’S COURSE REALLY HELPFUL IN PREPARING ME FOR THE MA I WANTED TO DO. IT’S IMPORTANT TO BE PATIENT, WORK HARD AND BE SELF-MOTIVATED IF YOU WANT TO ACHIEVE YOUR GOALS. NOW, AFTER TWO YEARS OF STUDY, I HAVE A STRONG PORTFOLIO WITH WHICH TO FIND THE JOB I AM LOOKING FOR.”**

Sharareh Khodaakhsh, MArch

## PRE-MASTERS PREPARATION COURSES

If you would like to study one of our practice-based MAs but need to develop your portfolio of work to the relevant standard, Kingston offers two courses to help you prepare for postgraduate study. Both courses offer language tuition if your first language is not English.

### One-year Pre-masters Preparation Course

This course is taught over one academic year and is designed to provide the skills and knowledge you need to apply for an MA course. You will work in the studio alongside our BA students, attend lectures and seminars and develop a cultural understanding of life in the UK. Our staff will guide you, helping you progress for entry to postgraduate study.

If you are a mature student taking the course for personal development and then returning to your job after a year's study, we can agree a flexible programme of study to suit your individual needs.

See [www.kingston.ac.uk/fadaoneyearpreparation](http://www.kingston.ac.uk/fadaoneyearpreparation) for details.

### Intensive (13-week) Pre-masters Preparation Course

Starting in early June, this 13-week intensive course will fine-tune the work already evident in your MA-entry portfolio, and will improve your research, development and presentation skills.

The subject areas covered include fashion design, graphic communication, 3D design, fine art, architecture and landscape architecture.

Two routes are available:

- 80% studio practice and 20% English as a foreign language;
- 100% studio practice with cultural and historical studies if your first language is English or you meet the standard IELTS entry requirements.

When you have completed the course (providing that you meet the academic and language targets), you will progress to the relevant MA course of your choice at Kingston University.

See [www.kingston.ac.uk/pgartdesignprep](http://www.kingston.ac.uk/pgartdesignprep) for details.





“WE WERE CONSTANTLY  
AND INTENSIVELY CHALLENGED  
BUT ENCOURAGED TO FOLLOW  
OUR IDEAS.”

Phuong Pham (pictured), from Vietnam, studied an MArch degree at Kingston and is currently working at the studio of head of school Daniel Rosbottom.

“I chose Kingston because I wanted to refresh my mind and sharpen the basic skills that a designer needs, and Kingston’s MArch course is designed for those who wanted to rediscover the core of being/working as an architect.

“My year in Kingston was both challenging and inspiring. Being taught by and working with a professional architect such as Daniel Rosbottom (head of School and professional

architect) in his studio was an unforgettable experience. He worked closely with students on their projects and raised a lot of interesting and inspiring conversations that broadened our views beyond what we were asked to do. Also, we were constantly and intensively challenged, but at the same time were much encouraged to follow our ideas.

“The opportunity of being a member of Daniel’s practice after the course was amazing. It feels so wonderful to be able to practise the skills and apply the knowledge I gained from my year in Kingston.”

# SOME OF THE ORGANISATIONS WE WORK WITH AT KINGSTON:



Supported by  
**ARTS COUNCIL  
ENGLAND**

**Arts Council England** is the national development agency for the arts in England, distributing public money from the Government and the National Lottery. In 2011, Kingston University's Stanley Picker Gallery was one of the few new London venues included in Arts Council England's National Portfolio Funding programme, which will run from 2012.

## DESIGN MUSEUM

The **Design Museum** is one of the world's leading museums devoted to contemporary design in every form, from furniture to graphics and architecture to industrial design. We run our MA in Curating Contemporary Design in partnership with the Museum. This collaboration has grown into one of the foremost MA programmes for design curators worldwide.



**DreamWorks Animation SKG** produces high-quality family entertainment using computer-generated (CG) animation. The company is among the top firms who helped us create our Digital Media Kingston (DMK) courses. Shelley Page, a graduate of our Faculty, is head of international outreach at DreamWorks and was recently a recipient of an Honorary Doctorate from The Design School. She is a member of DMK's industry panel.



## RTPI

mediation of space · making of place

The **Royal Town Planning Institute (RTPI)** is the UK's leading body for spatial, sustainable, integrative and inclusive planning. The RTPI accredits our MSc in Planning & Sustainability, and has provisionally accredited our MSc in Sustainable Place Making & Urban Design.

## Landscape Institute

Inspiring great places

The **Landscape Institute** is an educational charity and chartered body responsible for protecting, conserving and enhancing the natural and built environment for the benefit of the public. The Institute accredits our PgDip in Landscape Architecture; all accredited courses provide a foundation for work in the profession and a range of transferable skills.

In association with

## Historic Royal PALACES

**Historic Royal Palaces** is an independent charity that looks after the Tower of London, Hampton Court Palace, the Banqueting House, Kensington Palace and Kew Palace. The organisation has links with our MSc in Historic Building Conservation.

## N NATURAL HISTORY MUSEUM

The Ideas and Institutions module of MA Museum & Gallery Studies is co-delivered and co-hosted by the **Natural History Museum**. This module establishes a progressive interdisciplinary framework for critically and creatively questioning museums and galleries as ideas, institutions and as a field of academic inquiry. The course also has links with the Museum of London and the Royal Borough of Kingston's museums.

## RIBA

Validated courses  
in architecture

- Graduate Diploma Architecture
- Postgraduate Diploma Architecture (Professional Practice)



We also have formal and informal relationships with: Architecture Foundation and the Geffrye Museum, Demos, Kingston Museum, London Remade, Museum of London, Museum of Domestic Architecture, National Maritime Museum, Tate Galleries, V&A Museum, Wellcome Trust, Women's Library, the Whitechapel Gallery.



**Samsung Design Europe (SDE)** is part of Samsung Electronics, a market leader in high-tech electronics manufacturing and digital media. SDE is among the top firms who helped us create our Digital Media Kingston (DMK) courses. Clive Goodwin, founder and creative manager of SDE, is one of our graduates and a member of DMK's industry panel.



**Sony Computer Entertainment Europe** is among the top firms who helped us create our Digital Media Kingston courses. We are one of currently only 10 universities in the UK to be invited to join their Playstation Academic Advisory Board. We run high-end graphics programming modules developed in consultation with Sony.



The **Royal Institution of Chartered Surveyors (RICS)** is the world's leading professional body for qualifications and standards in land, property and construction. Kingston University is a RICS partnership university. We offer RICS-accredited BSc and MSc degrees, plus courses for students preparing for their Assessment of Professional Competence exams.



**Vauxhall Fashion Scout (VFS)** is London Fashion Week's largest independent showcase. Labelled a 'fashion goldmine' by vogue.com, VFS attracts a global audience of media, buyers, celebrities and style leaders. We preview the work of our MA Fashion students at the event.

# COURSES

ARCHITECTURE  
& LANDSCAPE

ART & DESIGN  
HISTORY

PHILOSOPHY

CREATIVE  
INDUSTRIES &  
THE CREATIVE  
ECONOMY

COMMUNICATION  
DESIGN

3D DESIGN

FASHION

DIGITAL MEDIA

FINE ART

SURVEYING  
& PLANNING

AT KINGSTON, YOU WILL  
RESEARCH, EXPERIMENT  
AND TEST PROPOSALS  
THAT ENGAGE WITH THE  
NEEDS OF OUR COMPLEX,  
MULTIFACETED WORLD.



Image: Will Pirkis



# THE SCHOOL OF ARCHITECTURE & LANDSCAPE

COURSES IN THE SCHOOL OF ARCHITECTURE AND LANDSCAPE OFFER PROJECTS DESIGNED TO ENGAGE WITH, AND CRITIQUE, REAL-WORLD ISSUES.

WE WILL ENCOURAGE YOU TO UNRAVEL THEORY, EXPLORE NEW MATERIAL AND TECHNOLOGICAL OPPORTUNITIES, AND DELIGHT IN THE POETRY OF CRAFT AND MAKING.

YOU WILL EXPLORE ENVIRONMENTAL ISSUES IN INNOVATIVE WAYS, USE MANAGEMENT TECHNIQUES WITH IMAGINATION, AND NEGOTIATE POLITICAL SYSTEMS WITH SOPHISTICATION.

TEACHING IS DEMANDING, CREATIVE AND ALWAYS CHALLENGING. IT OPERATES WITHIN SMALL STUDIOS ON THE ARCHITECTURE PROGRAMMES, AND WITHIN AND ACROSS YEARS ON LANDSCAPE PROGRAMMES. YOUR STUDIES WILL BE SUPPORTED BY LECTURES AND SEMINARS, WORKSHOPS AND VISITS FOCUSING ON HISTORY AND THEORY, AND TECHNOLOGY AND PRACTICE.

## OUR STAFF

Our staff offer experience, expertise and imagination across the breadth of subjects taught. Specialist knowledge, such as that offered by ArchiLab (below), adds a further dimension to our courses.

Our teaching staff are drawn from some of London's best practices, combining innovation and intellectual rigour with practical experience. This dialogue between academia and practice, and across thinking and making, is a central concern shared by staff across the School.

## OUR STUDIOS

In 2012 we're moving to brand new studios, where we'll be joined by the interior design team once this course moves to sit within our School.

## ARCHILAB

ArchiLab is our in-house environmental research unit and is used extensively by the School's students. It is a state-of-the-art teaching, research and consultancy facility designed for carrying out specialised science and technology activities relating to sustainable building design, simulation and implementation. ArchiLab features sophisticated equipment for lighting and acoustic design, as well as equipment for testing insulation levels, airflow, air and surface temperatures and humidity. It also has equipment for model photography, and computing facilities for architectural science applications. The specialist nature of these facilities means local architects regularly use them.

## OUR RESEARCH

Research within the School is broad, with strands engaged in design research, environmental engineering, history and theory, as well as the pedagogy of design education itself. The outcomes are varied, from buildings to books.

All our research-active staff also teach, so the dissemination of their work will be fundamental to your experience as a student. The practical nature of much of the research also means that there are opportunities for students to play active roles in projects or for student projects to become research projects.



UNÉ DUA PECKHAM

Santander



# NEWS

## UNIT 2 GOES SHOPPING

In 2010, Unit 2 of our Graduate Diploma in Architecture was listed by the *Architectural Review* as among the top 10 London units in its review of the final degree shows. Here's what the Unit has been up to in 2011.

"If retail is the driver of town centre development and the core activity on London's high streets, it's time it was taken seriously. With this in mind, Unit 2 went shopping in Peckham. We investigated places of commerce and exchange – from souks and stoas to Liberty of London and Leadenhall, and then moved on to propose retail-centred, urban projects for underdeveloped sites close to Peckham High Street. Peckham doesn't know if it needs an artisan butcher or a mega mall, so all our projects involved providing something between the two: a major supermarket as a core tenant.

"...Fascinated by unpedigreed architectures and processes of pastiche and translation, we sought to return some joy to retail architecture and develop hybrid shopping experiences which do something generous to the public realm whilst confronting the harsh realities of forklift-truck turning circles and convenience shopping."

Unit 2 is led by designer David Knight and practising architects Bernd Schmutz (Caruso St John Architects) and Adam Khan (Adam Khan Architects). Adam was recently profiled by London newspaper the *Evening Standard* in an article featuring up-and-coming practices.

Pictured: Sicilian Avenue imported to Peckham, by Aladeyemi Aladerun and Alex Jenkins

## KINGSTON ARCHITECTURE STUDENT NAMED IN *BUILDING DESIGN'S* TOP SIX

In 2010, Kingston student Helen Goodwin was named one of *Building Design's* six best graduating diploma students, the second year in a row that a Kingston student has received such an accolade. Helen, who was commended for her proposal for a crematorium and cemetery in east London, only entered the world of architecture in her 30s. She had travelled the world for 10 years as a concert cellist and began to consider a new career as an architect after helping develop the playground at her children's primary school in Kingston.

## KINGSTON AT THE INTERNATIONAL ARCHITECTURE BIENNALE

In 2010, Kingston was one of only 18 schools of architecture from across the world to be asked to present work at the 12th International Architecture Biennale in Venice, where we were represented by final-year diploma student Will Pirkis.



## ARCHITECTURE (DESIGN) MArch

FT PT

[www.kingston.ac.uk/pgarchdesign](http://www.kingston.ac.uk/pgarchdesign)

This course focuses on design, the core skill of the architect. It is ideal if you are a practitioner looking to reinvigorate your design ability and design thinking, or an international student needing an introduction to the UK profession and registration system. You will have the opportunity to develop your design skills through thoughtful engagement with site, precedent and materials.

### Course content

Drawing on our strengths in teaching and learning design through making, the course focuses on the relationship between architecture and its physical, cultural and temporal context. You will investigate site in all its manifestations and meanings, and have the opportunity to re-ground your design research skills through studio work supported by seminars and lectures. You can use our excellent workshop facilities to expand your design research skills. You can tailor your study to explore areas of interest. If you are an internationally educated student, you will be introduced to UK professional registration criteria and supported in pursuing qualification; if successful, you may be able to progress into the final year of our Graduate Diploma in Architecture (Part 2).

## GRADUATE DIPLOMA ARCHITECTURE ARB/RIBA PART 2

FT PT

[www.kingston.ac.uk/pgarchdip](http://www.kingston.ac.uk/pgarchdip)

This course provides the second of the three qualifications needed to become a practising architect, and is validated by both the Architects Registration Board (ARB) and Royal Institute of British Architects (RIBA). The course operates within the guidelines stipulated by professional accreditation, but has its own unique character, related to being taught within an art and design-based faculty. Design is at the heart of our approach, and you will have many opportunities to explore 'making' as a primary part of the design process.

### Course content

The curriculum comprises major studio projects – graduate design and graduate thesis – underpinned by theoretical, technical and contextual studies. These explore areas such as the development of architecture from antiquity to modernity, materials, and applying technology. You will produce a 15,000-word dissertation, examine the professional practice of architecture, and choose optional modules that may include a live project. Currently we run vertical Units, enabling you to either change after one year or remain with the same design tutors for the whole of your time at Kingston. The Unit tutors are from practices throughout London, and offer a variety of approaches to architectural design.

## ARCHITECTURE: THINKING BUILDING MA

FT PT

[www.kingston.ac.uk/pgarchthink](http://www.kingston.ac.uk/pgarchthink)

Unlike other theoretical courses in the field, this masters prioritises history while offering students the unique opportunity to undertake its research component either through writing or through making. It is of immediate relevance to architects – from post-Part 1 to mature practitioners – who want to situate their work in a rigorous intellectual framework; equally, to artists and designers with an interest in architecture who want to develop their practice, and those who want to pursue work in architectural publishing and teaching.

### Course content

This is a taught programme with a strong research component. The taught curriculum is divided into two parts: the first examines architecture from antiquity to modernity, identifying its relevance to the contemporary situation, while the second explores philosophical discourses of the past hundred years in the attempt to better understand the role of architecture in contemporary culture. There are also smaller modules on academic writing and research methods, as well as option modules from the Faculty's other MA degrees. The main research component of the course takes place in the thesis modules. The thesis can be either a 20,000-word masters dissertation or (an) original 2D or 3D artefact(s) of masters-level complexity and skill, accompanied by a critical essay and portfolio.

## PROFESSIONAL PRACTICE (ARCHITECTURE)

PgDip ARB/RIBA Part 3 exemption

FT PT

[www.kingston.ac.uk/pgarchprofdip](http://www.kingston.ac.uk/pgarchprofdip)

This course is the last stage of the formal education required to register as an architect in the UK. It focuses on the legal, procedural, professional and managerial competencies needed to engage in architectural practice as an independent and reflective practitioner. The course covers the criteria specified by the Architects Registration Board (ARB) and Royal Institute of British Architects (RIBA) for Part 3. The award offers a qualification prescribed by the ARB.

### Course content

The curriculum comprises work-based professional experience; together with modules in professional practice and relevant management issues. You will also undertake an integrative project module in a topic of your choice, and work as a group to make a project proposal. Your primary learning environment is within practice, but you will also use scenario-based examples to extend and test your knowledge base and its application. You will build on and further develop the knowledge, understanding and skills acquired during your first degree, subsequent graduate education and periods of work-based learning. The emphasis of this course is therefore to deepen, consolidate and demonstrate the application of existing learning and skills rather than to introduce a wide range of new subject material.

## PROFESSIONAL PRACTICE ARCHITECTURE MA

FT PT

[www.kingston.ac.uk/pgarchprofma](http://www.kingston.ac.uk/pgarchprofma)

This course is ideal if you want to sharpen your existing skills and develop new skills and strategies in the complex and diverse arena of architectural practice. It enables you to take the time to re-inform and redefine yourself as an independent, competent and reflective practitioner. The course can be credited as continual professional development (CPD); individual modules can also be taken as CPD.

### Course content

Your primary learning environment is your practice environment, but you will also use scenario-based examples to extend and test your knowledge base and its application. You will examine and critically evaluate the ethical, social and economic basis of professional practice. You will have the opportunity to reflect on your own professional skills and identify areas for improvement or specialisation.

You can tailor elements of the curriculum to your own interests or career ambitions; for example, you will complete a study topic of your choice, produce a substantial, original body of authoritative work for the dissertation, and choose option modules. Current option modules explore areas such as heritage and conservation, design control and management, sustainability, and design finance and administration.

## LANDSCAPE ARCHITECTURE PgDip

FT PT

[www.kingston.ac.uk/pglandarchdip](http://www.kingston.ac.uk/pglandarchdip)

This course provides an innovative design education, involving participation in European and local consultancy within our Landscape Interface Studio ([www.landscapeis.org](http://www.landscapeis.org)). All staff are ambitious and creative design practitioners and researchers. Our London location, and local and European networks provide the focus for contemporary design projects which address immediate and long term landscape solutions in urban, periurban and rural contexts. Kingston graduates find employment with prestigious landscape and multidisciplinary design teams, worldwide. The course is accredited by the Landscape Institute.

### Course content

There are no 'examinations', and all work carried out is aimed at helping you develop a personal portfolio (mixed media) that can be immediately useful in targeting employment. Design projects reflect the opportunities and challenges of contemporary landscape practice: for example, people and places in the public realm; environment; and professional practice. Communication and making modules make use of client contact and on-campus workshops. Critical reflection is supported through Research Techniques and Landscape and Urbanism Theory modules. Independent study and study visits are integral to the programme. On successful completion you may apply to study the follow-on Masters qualification, and complete a Masters project.

## LANDSCAPE & URBANISM MA

FT PT

[www.kingston.ac.uk/pglandurban](http://www.kingston.ac.uk/pglandurban)

This course aims to prepare you for the competitive world of landscape and urbanism practice. It provides an innovative design education, with participation in European and local consultancy within our Landscape Interface Studio ([www.landscapeis.org](http://www.landscapeis.org)). Our London location and local and European networks provide the focus for contemporary landscape and urbanism design projects including green and blue infrastructures, sustainable city strategies and detailed design for people and places. We welcome applications from UK, European and international students who have education and work experience in spatial design disciplines.

### Course content

Design project modules reflect the opportunities and challenges of contemporary cities at global and local scales; these projects are supported by a module in Materials and Techniques. We address: the public realm, transport, wellbeing, sport, tourism, leisure and residential development; environment: climate change, biodiversity, city and identity. Modules in Research Techniques, and Landscape and Urbanism Theory support critical reflection. Independent study and study visits are integral to the programme. You can select option modules from the Schools of Architecture and Landscape, and Surveying and Planning. These include: Communication and Making (client contact and on-campus workshops), Professional Practice, Sustainable Cities, Conservation and Heritage.

“I CAME TO KINGSTON FOR MY PART 2 (DIPLOMA) IN ARCHITECTURE, RATHER JADED AFTER MY EXPERIENCES AS AN UNDERGRADUATE AT ANOTHER UNIVERSITY, TO FIND A REFRESHING VARIETY OF UNITS AND TUTORS ON OFFER. I CHOSE TO DO THE MASTERS COURSE UNDER MICHAEL SHOUL. IT WAS EXACTLY THE CURRICULUM I HAD BEEN HOPING FOR WHEN I SET OUT TO BECOME AN ARCHITECT, AND THE APPROACH TO THE CRAFT HAS STOOD ME IN GOOD STEAD EVER SINCE. I CAME BACK TO DO MY PART 3 PROFESSIONAL QUALIFICATION, WHICH I FOUND TO BE THOROUGH, APPROPRIATELY DIFFICULT AND ENTERTAINING AT THE SAME TIME.”

LESLEY ANNE PRICE, RIBA PART 2 & 3





**CLIO**

**The Muse Of History**



# THE SCHOOL OF ART & DESIGN HISTORY

PROGRAMMES OFFERED BY THE SCHOOL OF ART & DESIGN HISTORY REPRESENT TWO BROAD THEMATIC STREAMS OF CRITICAL AND CREATIVE INQUIRY: ART AND DESIGN HISTORY AND MUSEUM, GALLERY AND HERITAGE STUDIES, WITH CONSIDERABLE INTERDISCIPLINARY ENGAGEMENT BETWEEN THE STREAMS.

YOU CAN EXPLORE A RANGE OF SUBJECTS, INCLUDING MODERN AND CONTEMPORARY PAINTINGS, DESIGN AND EVERYDAY OBJECTS, INSTALLATION, PHOTOGRAPHY, FILM AND NEW MEDIA, AS WELL AS THE CHANGING CONTEXTS FOR THEIR PRODUCTION AND CONSUMPTION. OUR COURSES RANGE ACROSS HISTORY, THEORY AND PRACTICE, AND DEBATE CONTEMPORARY ISSUES.

## OUR STAFF

Our staff are practising art and design historians and museologists with extensive knowledge and expertise.

Staff participate in international events at institutions such as the Yale Center for British Art, the Clark Art Institute, Hangyang University Korea, University of Lisbon, TU Delft, University of Queensland, and the Université François Rabelais.

## OUR RESEARCH

Emphasis is placed upon critical-creative approaches to academic research within the art and design history and museum, gallery and heritage studies curricula.

Our staff contribute to a number of research centres within the Faculty, including the Modern Interiors Research Centre and the Visual and Material Culture Research Centre.

Teaching and research encompasses both the traditional modes of historicising and analysing museums and galleries, the fine and decorative arts, design and architecture, as well as more critically orientated studies of contemporary visual and material cultures.

To find out more about research within the Faculty, see pages 56–59 or visit [www.kingston.ac.uk/fada/research](http://www.kingston.ac.uk/fada/research)

## INDUSTRY CONTACTS

We enjoy formal and informal working relationships with academics at a variety of other institutions and organisations, including the Design Museum, Historic Royal Palaces at Hampton Court, London Remade, The Architecture Foundation and the Geffrye Museum, the V&A Museum, the Tate Galleries, Dulwich Picture Gallery, The Women's Library, the Whitechapel Gallery, the Museum of London, the Museum of Domestic Architecture and Kingston Museum, which houses the world-class Eadweard Muybridge collection.

## ART & DESIGN HISTORY MA

FT PT

[www.kingston.ac.uk/pgarthistory](http://www.kingston.ac.uk/pgarthistory)

This course provides an interdisciplinary study of the history of both art and design. As well as advancing your knowledge of developments that have occurred in these vibrant areas of practice over the past two centuries, the course will also provide you with transferable skills in history, theory and research. Assessment is by a unique combination of essay, presentation, dissertation and optional project-led research, enabling you to develop your understanding and application of art and design history in ways that are relevant to your research and career aims.

### Course content

You will study a series of dedicated taught modules that are concerned with issues of research methodology, critical theory and analysis, and subject-specific case studies. You will be expected to conduct research around the broad themes and subjects addressed by each module. This research will enable you to tailor your own path of study according to your particular interests and future aspirations. You will have the opportunity to take part in activities and study trips organised by the School of Art & Design History – recent destinations have included Barcelona, Berlin, Istanbul, New York, Paris and Venice.

## PROFESSIONAL PRACTICE (DESIGN) MA

FT PT

[www.kingston.ac.uk/pgprofpracticedesign](http://www.kingston.ac.uk/pgprofpracticedesign)

This course provides flexible, work-based learning for the experienced professional working in a design field. It provides an opportunity for you to critically reflect on your professional career to date and consider potential new directions. The MA will be awarded for learning that takes place at work or through professional creative practice.

### Course content

You will develop an individually tailored programme of study, approved in the form of a Learning Agreement. This can consist entirely of individual learning goals based on your past professional achievement (for which you submit evidence in the form of a portfolio) and current and new professional practice, accompanied at each stage by written commentary and critical reflection. Study will take place flexibly through tutorials and distance learning. You will be encouraged to undertake interdisciplinary study and challenge the conventions of your core design area. The major project enables you to develop your own professional interests and gain valuable research skills.

## ART MARKET APPRAISAL MA

FT PT

[www.kingston.ac.uk/pgartmarket](http://www.kingston.ac.uk/pgartmarket)

If you are interested in developing a career in the art market, particularly in the appraisal of both fine and decorative arts and other artefacts, this course is ideal. It offers a unique mix of academic tuition and exposure to London's huge and dynamic art market. Accredited by the Royal Institution of Chartered Surveyors (RICS), the course leads to entry to the RICS as a probationary member.

### Course content

With an emphasis on understanding how the art market functions, you will be introduced to a wide range of businesses, collections and professionals. You will also study the economic and legal context within which professional practice is grounded, and gain the ability to apply techniques related to the evaluation of objects in a practice environment. You will have the opportunity to develop your knowledge of a particular specialist area of the art market, which may include anything from antiquities to cutting-edge contemporary art.

## FILM STUDIES MA

with the Faculty of Arts and Social Sciences

FT PT

[www.kingston.ac.uk/pgfilmstudies](http://www.kingston.ac.uk/pgfilmstudies)

Taught by internationally renowned academic specialists in their areas, Kingston's MA in Film Studies combines excellence in research within a supportive community of world-class scholarship. It aims to facilitate the development of your own academic skills and interests by drawing from a range of taught topics that include contemporary developments in film theory, avant-garde and experimental cinema, national cinemas, research methodologies, gender and representation.

### Course content

The MA covers a range of key areas, including gender and ethnicity, narrative, political cinema and audiences, while a focus upon research skills and small group discussion provides a sophisticated grounding in the understanding and analysis of film.

You will gain the analytical tools and theoretical approaches necessary to undertake your own research and will be encouraged to apply them to a range of areas.

Our team has a particular interest in national and international cinema, including British, German, French and Asian cinemas, but modules also include Hollywood cinema, genre studies and cult, and the overlaps between them.

## HERITAGE (CONTEMPORARY PRACTICE) MA

FT PT

[www.kingston.ac.uk/pgheritage](http://www.kingston.ac.uk/pgheritage)

The philosophy of this course is to critically engage and creatively experiment with ideas of heritage and heritage practice in the contemporary world. Your studies balance critical inquiry with creative project work and practice-based research opportunities. Several of the modules are delivered in partnership with heritage institutions and other creative practitioners.

### Course content

Through an interdisciplinary curriculum, you will study taught modules covering critical analysis and creative practice, and conduct research around the broad themes and subjects addressed by each module. The taught modules range across creative approaches to materials and practice, the performance and communication of heritage, planning, place and sustainability, and critical perspectives on heritage in a global context.

## MUSEUM & GALLERY STUDIES MA

FT PT

[www.kingston.ac.uk/pgmuseumgallerystudies](http://www.kingston.ac.uk/pgmuseumgallerystudies)

This course is ideal if you are interested in pursuing imaginative, interdisciplinary, international museum study. It will advance your knowledge of contemporary developments in this vibrant and complex area of academia and the cultural sector, and provide you with transferable skills in critical inquiry and creative practice. Our underlying philosophy is to do things differently – to offer you a critical-creative vision of and approach to museum and gallery practice, questioning and challenging conventions of the institution and the field.

### Course content

The course interrogates contemporary issues and practices, including collection, interpretation, exhibition, space, place and the city, audiences and communities, controversy and contingency, institutional purpose, scenario planning and sustainable futures. You will study taught modules covering critical analysis and creative practice, and conduct research around the broad themes and subjects addressed by each module. Several modules have been developed in collaboration with museums such as the Museum of London, the Natural History Museum and Kingston Museum and Heritage Service.

“THE COURSE CONTENT HAS BEEN FASCINATING – THE GUEST LECTURERS ENABLE US TO EXPERIENCE A BROAD RANGE OF SUBJECTS TO DISCUSS AND TAKE FURTHER WITH OUR RESEARCH. THE STAFF ARE READILY AVAILABLE, EITHER IN PERSON OR BY EMAIL. I AM LOOKING FORWARD TO STARTING MY DISSERTATION... KNOWING THAT THERE WILL ALWAYS BE SOMEONE THAT I CAN CONTACT TO DISCUSS IDEAS AND RESEARCH.”

DONNA YAMANI, ART & DESIGN HISTORY MA

## NEWS

### RECENT BOOKS FROM ART & DESIGN HISTORY STAFF

STEPHEN BARBER, *THE WALLS OF BERLIN: URBAN SURFACES, ART, FILM*, SOLAR BOOKS, 2011

STEPHEN BARBER, *ABANDONED IMAGES: FILM AND FILM'S END*, REAKTION, 2010

ANNE CHICK AND PAUL MICKLETHWAITE, *DESIGN FOR SUSTAINABLE CHANGE*, AVA, 2011

ANNE MASSEY, *CHAIR*, REAKTION, 2011

NICHOLAS TROMANS, *RICHARD DADD: THE ARTIST AND THE ASYLUM*, TATE, 2011





# CENTRE FOR RESEARCH IN MODERN EUROPEAN PHILOSOPHY

THE CENTRE FOR RESEARCH IN  
MODERN EUROPEAN PHILOSOPHY  
(CRMEP) IS THE LEADING CENTRE  
FOR POSTGRADUATE-LEVEL STUDY  
AND DOCTORAL RESEARCH IN  
CONTINENTAL PHILOSOPHY IN THE  
LONDON AREA.

The CRMEP moved to Kingston University from Middlesex University in the Summer of 2010. It is located across the faculties of Arts and Social Sciences (FASS) and Art, Design & Architecture (FADA).

Since its inception in 1994, the CRMEP has developed a national and international reputation for teaching, research and publication in the field of post-Kantian European philosophy, characterised by a strong emphasis on broad cultural and intellectual contexts and a distinctive sense of social and political engagement.

The Centre's submission for the 2008 Research Assessment Exercise was awarded a score of 2.8, with 65% of its research activity judged 'world-leading' or 'internationally excellent'.

The CRMEP runs a PhD programme and three MA programmes: MA in Modern European Philosophy, MA in Aesthetics and Art Theory, and MA in Philosophy and Contemporary Critical Theory; all are offered in partnership with FAASS. There are normally 50–60 MA students and 15–20 PhD students enrolled in CRMEP programmes.

Pictured above, from left: Professor Peter Osborne, Dr Stella Sandford, Professor Peter Hallward and Professor Eric Alliez



## AESTHETICS & ART THEORY MA

with the Faculty of Arts and Social Sciences

**FT** **PT**

[www.kingston.ac.uk/pgaesthetics](http://www.kingston.ac.uk/pgaesthetics)

Unlike most courses on art theory, this programme grounds its problems and concepts in the appropriate philosophical context. The MA will prepare you for a wide range of careers in the arts, education and public policy. It also provides an ideal preparation for doctoral research across the humanities and social sciences.

### Course content

You will take four taught modules and prepare a dissertation on a topic of your choice. Following a compulsory module on Kant and the Aesthetic Tradition, you will choose from a range of options, including Romantic Philosophy of Art, Modernism and Contemporary Art Theory, and Commodification and Subjectivation. Authors studied include Adorno, Deleuze, Derrida, de Duve, Duchamp, Greenberg, Heidegger, Kant and Merleau-Ponty.

## MODERN EUROPEAN PHILOSOPHY MA

with the Faculty of Arts and Social Sciences

**FT** **PT**

[www.kingston.ac.uk/pgphilosophymodern](http://www.kingston.ac.uk/pgphilosophymodern)

This MA is based on a focused study of the fundamental texts of the modern European philosophical tradition. It provides an ideal preparation for doctoral research in philosophy or related fields in the humanities and social sciences. It also prepares graduates for a wide range of careers in education, the arts, politics and public policy.

### Course content

This programme enables you to study 19th- and 20th-century European philosophy in a structured way, concentrating on the interpretation and analysis of key texts. The curriculum pays particular attention to the influence of Immanuel Kant's philosophy and to the debates that structured the development of post-Kantian philosophy in both Germany and France.

The programme begins with a foundation module on Kant's Critique of Pure Reason, and adopts Kant's critical philosophy as a historical and conceptual basis for the understanding of subsequent European philosophy as a whole. Other major authors studied include Hegel, Marx, Nietzsche, Heidegger, Sartre, Deleuze and Badiou. You will take four taught modules, and prepare a dissertation on a topic of your choice.

## PHILOSOPHY & CONTEMPORARY CRITICAL THEORY MA

with the Faculty of Arts and Social Sciences

**FT** **PT**

[www.kingston.ac.uk/pgphilosophytheory](http://www.kingston.ac.uk/pgphilosophytheory)

Unlike most courses on contemporary critical theory (based in literary or cultural studies departments), this programme grounds its problems and concepts in the appropriate philosophical context. The MA provides an ideal preparation for doctoral research across the humanities and social sciences. It also prepares graduates for a wide range of careers in education, the arts, politics and public policy.

### Course content

The course explores the specifically philosophical aspects and significance of contemporary critical theory. As understood on the programme, critical theory refers to those traditions of 20th-century European thought within which philosophy opens out onto critical diagnoses of the historical present. You will cover two main areas: the two main traditions of critical theory – the Frankfurt School and French anti-humanism; and their background in Kant, Hegel, Marx and 19th-century European philosophy more generally.



# CREATIVE INDUSTRIES & THE CREATIVE ECONOMY

FROM ADVERTISING TO FILM,  
FASHION TO ARCHITECTURE, MUSIC  
TO PUBLISHING, AND DIGITAL  
MEDIA TO SOFTWARE AND GAMING,  
THE CREATIVE INDUSTRIES ARE  
FAST OUTPACING TRADITIONAL  
INDUSTRIES BOTH IN THE UK AND  
THE REST OF THE WORLD.

OUR INNOVATIVE AND UNIQUE  
CREATIVE INDUSTRIES & THE  
CREATIVE ECONOMY PROGRAMME  
HAS BEEN DEVELOPED TO PROVIDE  
YOU WITH THE UNUSUAL MIX  
OF CREATIVE SKILLS AND KEEN  
BUSINESS AND LEADERSHIP  
ACUMEN NECESSARY TO SUCCEED  
IN THESE THRIVING INDUSTRIES.

[WWW.OURCREATIVEECONOMY.COM](http://WWW.OURCREATIVEECONOMY.COM)

## WHAT'S ON OFFER?

We are seeking highly motivated and independent individuals who have the potential to become thought-leaders in their chosen creative industry context. Whether you are a 'creative' or a manager, whether you work for an established organisation or plan to set up your own entrepreneurial venture, our programme offers you a new perspective from which to study and develop the skills necessary to achieve success.

The courses encourage high levels of creativity, networking and 'learning by doing'. You will engage fully in collaborative and multidisciplinary teamwork and should also be prepared to respond to industry-generated projects. At the end of the degree you can choose to take a dissertation or a practice-based research project, which may lead on to the development of your own entrepreneurial creative venture.

## HOW TO APPLY

To register on one of our courses, you should contact the Faculty of Business and Law (see details on the course webpage), which will be your host faculty. You will study among students from across all the specialist sectors as well as alongside fellow students who have opted to work towards the same specialist discipline as you.







“WE WANT TO BE SUCCESSFUL AND EXPAND THE BUSINESS, BUT WE ALSO WANT TO STAY TRUE TO OUR ETHOS.”

## YASHAR SADEGHI AND ALEX FARNEA

“I think there is always a struggle between the creative spirit and the realities of commerce. This sometimes manifests itself in a schizophrenic approach to setting our milestones for the long run. We obviously want to be successful and expand the business, but we also want to stay true to our ethos. So the long-term plan at the moment is best described by figuring out how to do both. The Creative Industries & the Creative Economy programme is helping us to do that.”

Product designers Yashar Sadeghi and Alex Farnea established The Work Shop, a pop-up gallery/retail space in Kingston town centre, as a result of an idea generated by their studies.

The Work Shop grew out of a live module on entrepreneurship, which encouraged students to initiate, design and manage a viable creative enterprise project. Yashar and Alex spotted a gap between the need for enterprising creatives to reach the market, and local demand for unique or small batch-produced objects that large retailers are unable to provide.

In partnership with the Faculty, they set up The Work Shop to bridge this gap by showcasing the work of the Faculty’s students, graduates and staff.

Yashar and Alex are no strangers to creative ventures, having already started a design company, nuu, after meeting as undergraduates at Kingston. They enrolled on the Creative Industries & the Creative Economy programme shortly after forming nuu because, as Yashar explains, “Setting up the business was followed very quickly with the realisation that we lacked some key skills that would be necessary to run the business effectively.”

Yashar describes the programme as “...like an MOT for your brain. It makes you question what you do; why you do it; how you do it; should you be doing it at all. It allows you to address those questions in an academic setting, and forces you to look at what you are doing from the outside in.”

[www.nuuonline.co.uk](http://www.nuuonline.co.uk)





## CREATIVE INDUSTRIES & THE CREATIVE ECONOMY MA

(Courses available in Communication Design / Fashion Design / Product & Space / Museums & Galleries and the Creative Economy)

**FT PT**

[www.ourcreativeeconomy.com](http://www.ourcreativeeconomy.com)

**The Creative Industries and the Creative Economy MA will help you develop your entrepreneurial, management and networking skills to a level where you can connect creativity and business in a successful and meaningful way. For full details of the route of your choice, please see the course website, above.**

### Course content

All the courses are structured in three phases (each of 60 credits). The first phase introduces you to the creative economy in a very practical sense, as you work with other students to develop your own creative enterprise project. The second phase enables you to focus in more detail on your chosen creative industry specialism. The final phase is where you synthesise your learning from the whole course.

### Phase 1: shared modules across all courses

- Design thinking and entrepreneurship in practice  
This cornerstone module is a team-based small enterprise project. It will help creative graduates who want to get involved with successful start-ups, develop and grow a business in the creative economy or successfully manage an established enterprise.
- Contemporary Issues in the Creative Economy  
The aim of this module is to foster students' critical understanding of the emergence and growth of the creative economy, and of the cultural, social and economic implications of these developments.
- Managing Creativity and Innovation  
The main aim of this module is to give a critical understanding and knowledge of the processes and behaviours necessary for managing creativity and innovation in a creative industries context.
- Leadership in the Creative Economy  
This module encourages students to learn experientially about leadership through performance and develop conceptual understanding of creative leadership and how it differs from more traditional approaches.

### Phase 2: Specialist modules

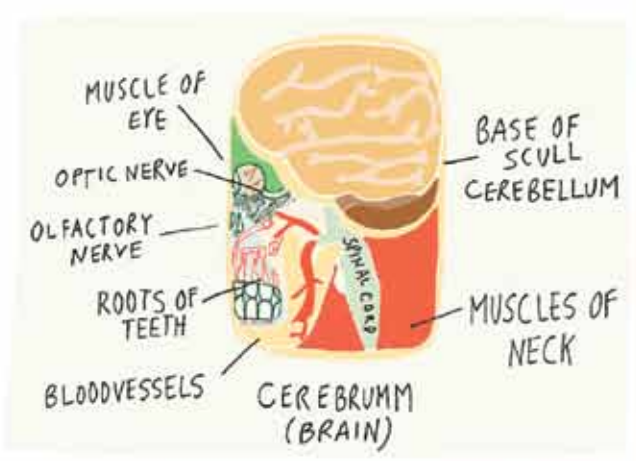
You will take modules that relate to the creative industry specialism of your choice. See the course webpage for details.

### Phase 3: Personal project

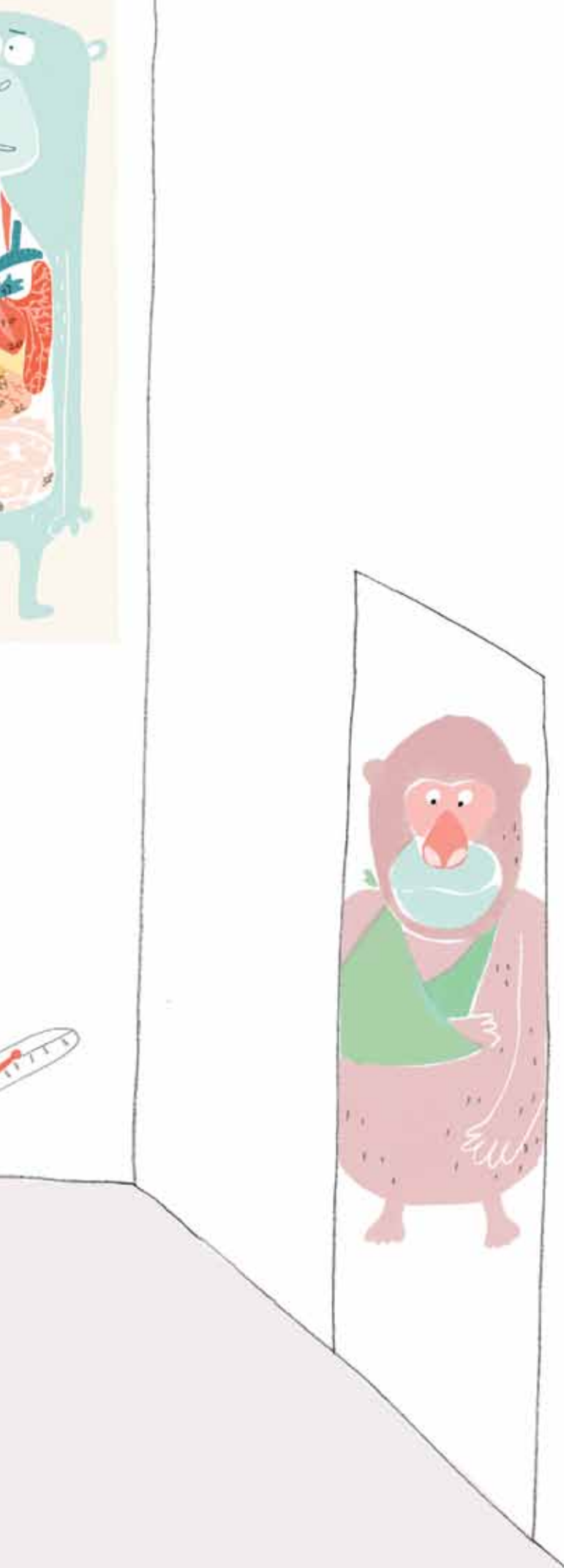
Your personal project, which will result in a dissertation or practice-based project, will focus directly on your specialist sector and will be relevant to your own career needs. Under the supervision of Kingston's staff, your project will be designed to connect you directly with current practice and will develop skills to enhance your employability.

Pictured: Yashar Sadeghi (left) and Alex Farnea (right) in the Work Shop, Kingston upon Thames





"Hm", said the doctor.  
"Maybe you are luckier than you think."



# THE DESIGN SCHOOL:

## COMMUNICATION DESIGN

THE SCHOOL OF COMMUNICATION DESIGN BELIEVES THAT, AS NEW MODES AND METHODS OF VISUAL COMMUNICATION CONTINUE TO EMERGE AND EVOLVE, WORKING PRACTICES WILL MERGE AND MUTATE; THAT TODAY'S ARTISTS AND DESIGNERS ARE CRUCIAL IN AIDING OUR UNDERSTANDING OF THE DEEP COMPLEXITIES OF MODERN LIFE; AND THAT TOMORROW'S ARTISTS AND DESIGNERS MUST BE EQUIPPED WITH THE MINDSETS AND SKILLSETS THAT HAVE A CAPACITY TO EVOLVE.

### OUR COURSES

The School enjoys national and international recognition and reputation across the broad spectrum of communication design, with courses in graphic design and photography, illustration and animation, digital media, filmmaking, curating contemporary design, screen design for film and TV, and in design for sustainable development.

We provide a challenging and stimulating environment where diversity, individuality, inventive and creative thinking is explored and encouraged. Studies are broadly based to encourage the creative flexibility required by ever-widening creative industries. Our courses also provide an excellent grounding for professional life – we offer many opportunities for work placements and live project commissions.

### OUR STAFF

Our students are taught by active academics and professionals with a wealth of international experience in their various fields; and high-level practitioners are involved in the development of our programmes.

### RESEARCH AREAS

For information about research within the Faculty, see pages 56–59 or [www.kingston.ac.uk/fada/research](http://www.kingston.ac.uk/fada/research)

Image by MA Illustration & Animation graduate Claudia Boldt, from her forthcoming picture book, *Apey, the Unluckiest Monkey in the World*. Claudia, along with fellow Kingston graduate Kevin Waldron, was named among Booktrust's 10 best new illustrators in 2011 (see p35).

Image reproduced with kind permission of Claudia Boldt.  
[www.cloudcuckoostudio.com](http://www.cloudcuckoostudio.com)



*They're  
always  
watching!*



# NEWS



In 2011, Kingston MA Illustration graduates Kevin Waldron and Claudia Boldt were named among Booktrust's 10 Best New Illustrators.

The Kingston duo were chosen by a panel of judges from the world of publishing, which included Children's Laureate Anthony Browne and best-selling *Charlie and Lola* author/illustrator Lauren Child.

Kevin's first picture book, *Mr Peek and the Misunderstanding at the Zoo*, which was developed from his Kingston MA project on paranoia, won the BolognaRagazzi Opera Prima Award, one of the most prestigious prizes in the children's book world. *Mr Peek* was also shortlisted for the 2011 Bisto Book of the Year award, along with another of Kevin's picture books, *Tiny Little Fly* (published by Walker Books). Originally from Ireland, Kevin now lives in New York.

German-born Claudia attended the Glasgow School of Art before coming to Kingston University, where she graduated with her Masters in Illustration in 2007 – the same year she founded Cloud Cuckoo Studio with fellow illustrator Katharina Koall in London's East End. Katharina graduated from our Illustration MA in 2010.

Claudia has two books to her name, *Ugghh!* and *Star Gazers, Skyscrapers & Extraordinary Sausages* (both published by Child's Play). Her work has been exhibited in London, Zürich and Berlin, and has been selected to show at the illustrators exhibition in Bologna. Cloud Cuckoo Studio's clients include The Savoy Hotel and Waterstone's Books Quarterly.

Image from *Mr Peek and the Misunderstanding at the Zoo* (Templar Publishing) reproduced by kind permission of Kevin Waldron. [www.kevinwaldron.co.uk](http://www.kevinwaldron.co.uk)

## COMMUNICATION DESIGN: GRAPHIC DESIGN MA

**FT PT**

[www.kingston.ac.uk/pggraphicdesign](http://www.kingston.ac.uk/pggraphicdesign)

The MA in Graphic Design encourages the exploration and understanding of the methods and processes at work in contemporary visual communication. The programme of study is intended to further develop your personal practice and approach to graphic design. It provides a focus on individual research and enquiry and helps you to develop your understanding of the significance of the wider cultural role of the designer.

### Course content

Project work will challenge you to develop and to enhance your existing ways of working. You will explore the importance of research in underpinning your practice and will be encouraged to build your own visual language and 'tools' in response to set briefs within each module as you work towards the final stage of the course when you propose and develop your independent major project. All projects are grounded in the understanding of the significance of visual research and the documentation of how ideas are developed and tested. You will be taught by experienced academics and specialist tutors from industry who encourage you to develop your understanding of the relationship between words, pictures and their means of communication and transmission.

## COMMUNICATION DESIGN: ILLUSTRATION & ANIMATION MA

**FT PT**

[www.kingston.ac.uk/pgillustration](http://www.kingston.ac.uk/pgillustration)

These specialist routes offer the opportunity for focused study in either animation or illustration. You will be encouraged to explore the role of the constructed image in contemporary communication, either static or dynamic. The programme develops your personal practice and approach to the production of images. Each route provides a focus on individual research and enquiry and helps you to develop your understanding of the significance of the image-maker in shaping meaning and creating communication.

### Course content

Project work will challenge you to develop and to enhance your existing ways of working. You will explore the importance of research in underpinning your practice and will be encouraged to build your own visual language and 'tools' in response to set briefs within each module as you work towards the final stage of the course when you propose and develop your independent major project. All projects are grounded in the understanding of the significance of visual research and the documentation of how ideas are developed and tested. You will be taught by experienced academics and specialist tutors from industry who work with you to develop your approach to image making.

## COMMUNICATION DESIGN: MOTION GRAPHICS MA

**FT PT**

[www.kingston.ac.uk/pgmotiongraphics](http://www.kingston.ac.uk/pgmotiongraphics)

This specialist course of study encourages the exploration of the methods and processes that are required to produce dynamic visual communication. Intended to further develop your personal practice and approach to motion graphics, it provides a focus on individual research and enquiry and helps you to develop your understanding of the significance of the moving image within contemporary graphic design practice.

### Course content

Project work will challenge you to develop and to enhance your existing ways of working. You will explore the importance of research in underpinning your practice and will be encouraged to build your own visual language and 'tools' in response to set briefs within each module as you work towards the final stage of the course when you propose and develop your independent major project. All projects are grounded in the understanding of the significance of visual research and the documentation of how ideas are developed and tested. You will be taught by experienced academics and specialist tutors from industry who encourage you to develop your approach to the creation of motion graphics.

## CURATING CONTEMPORARY DESIGN MA

**FT PT**

[www.kingston.ac.uk/pgcurating](http://www.kingston.ac.uk/pgcurating)

This course is run jointly by Kingston University and the Design Museum and is taught by leading curators and designers within the field. Through its partnerships with prestigious cultural organisations, including the British Council, Architecture Foundation, British Museum and the V&A, the course gives you the opportunity to curate live projects and build your own professional profile. Ambitious international projects are an integral part of the curriculum, and graduates have gone on to successful careers around the world.

### Course content

You will gain a grounding in the professional aspects of museum practice as well as first-hand experience in planning and organising exhibitions. This practical experience will be supported by modules in history and theory, ensuring you have a thorough knowledge of the ideas and context underpinning the display and curating of contemporary designed objects. There is a strong emphasis on gaining key employability skills for the sector, ensuring a high level of professional development. We work closely with the British Council, Crafts Council and V&A Museum. International contacts and professional development are supported by international visiting professors Pablo Helguera (MOMA New York) and Marilyn Martin (formerly Iziko Museum, Cape Town).

## DESIGN FOR DEVELOPMENT MA

**FT PT**

[www.kingston.ac.uk/pgdesigndevelopment](http://www.kingston.ac.uk/pgdesigndevelopment)

This course focuses on the value of design as a vehicle for addressing social and ecological concerns in both the developed and developing worlds. It is relevant whether you are already a trained designer or not. We have worked closely with organisations such as the Design Council, Sorrell Foundation, ThinkPublic, Audi Design Foundation and Greengaged, and you will be taught by leading academics, design thinkers and organisations in the field.

### Course content

The course is about the need to change to a more sustainable and equitable society, and the curriculum focuses on building a road-map to get there. You will undertake your studies in a number of faculties and schools across the University.

Socially and ecologically considered design urges innovation, participatory design thinking, project and stakeholder identification, sustainable development models, entrepreneurship and an anticipation of the consequences of communications, products and services. This approach requires new knowledge, skills and collaborative partnerships. We will examine ways to inspire and challenge organisations with positive, real-world solutions for a sustainable future through design interventions.

## FILM MAKING MA

with the Faculty of Arts and Social Sciences

**FT PT**

[www.kingston.ac.uk/pgfilmmaking](http://www.kingston.ac.uk/pgfilmmaking)

This course will provide you with professional film production skills in both digital and analogue equipment, as well as knowledge of the theories of contemporary cinema. It takes its inspiration from all forms of cultural production that have challenged the official versions, including the work of artists, musicians, painters and performers and the movements of Italian neo-realism and the new cinemas of Africa, Latin America and Iran. The focus is placed firmly on developing clear and simple storytelling techniques that may transcend arbitrary formal categorisations of drama, documentary or genre.

### Course content

You will study the basic principles of filmmaking, develop an understanding of the nature and potential of visual storytelling, and discover the importance of sound, lighting and the screenplay in filmmaking. You will produce a portfolio of moving-image projects to illustrate your technical ability in cinematography, sound recording, editing and writing/direction. You will also gain a sound knowledge of the theories of contemporary cinema and the history of film criticism.

You will need your own external hard drive (of more than 250Gb) to store your film projects.

## DESIGN WITH LEARNING & TEACHING IN HE PgDip

**FT PT**

[www.kingston.ac.uk/pgdesignhe](http://www.kingston.ac.uk/pgdesignhe)

This unique course enables you to study design at MA level alongside a PgCert in higher education (HE). It is ideal if you would like to develop your design practice while gaining the qualifications you need to develop a career in higher education: a PgCert is increasingly a requirement for new teachers in universities and colleges. The University runs a very successful PgCert in HE in-house.

### Course content

You will be tutored and managed by the course director, who has many years' experience of design professional practice and pedagogy in art and design higher education. You will have the opportunity to study with other design and fine art students across the Faculty and will develop your design practice or design theory through individual and team projects. You will also carry out teaching practice alongside experienced academic design staff. We offer a part-time study option to help you fit your MA around other commitments.

## PROFESSIONAL PRACTICE (DESIGN) MA

**FT PT**

[www.kingston.ac.uk/pgpropracicedesign](http://www.kingston.ac.uk/pgpropracicedesign)

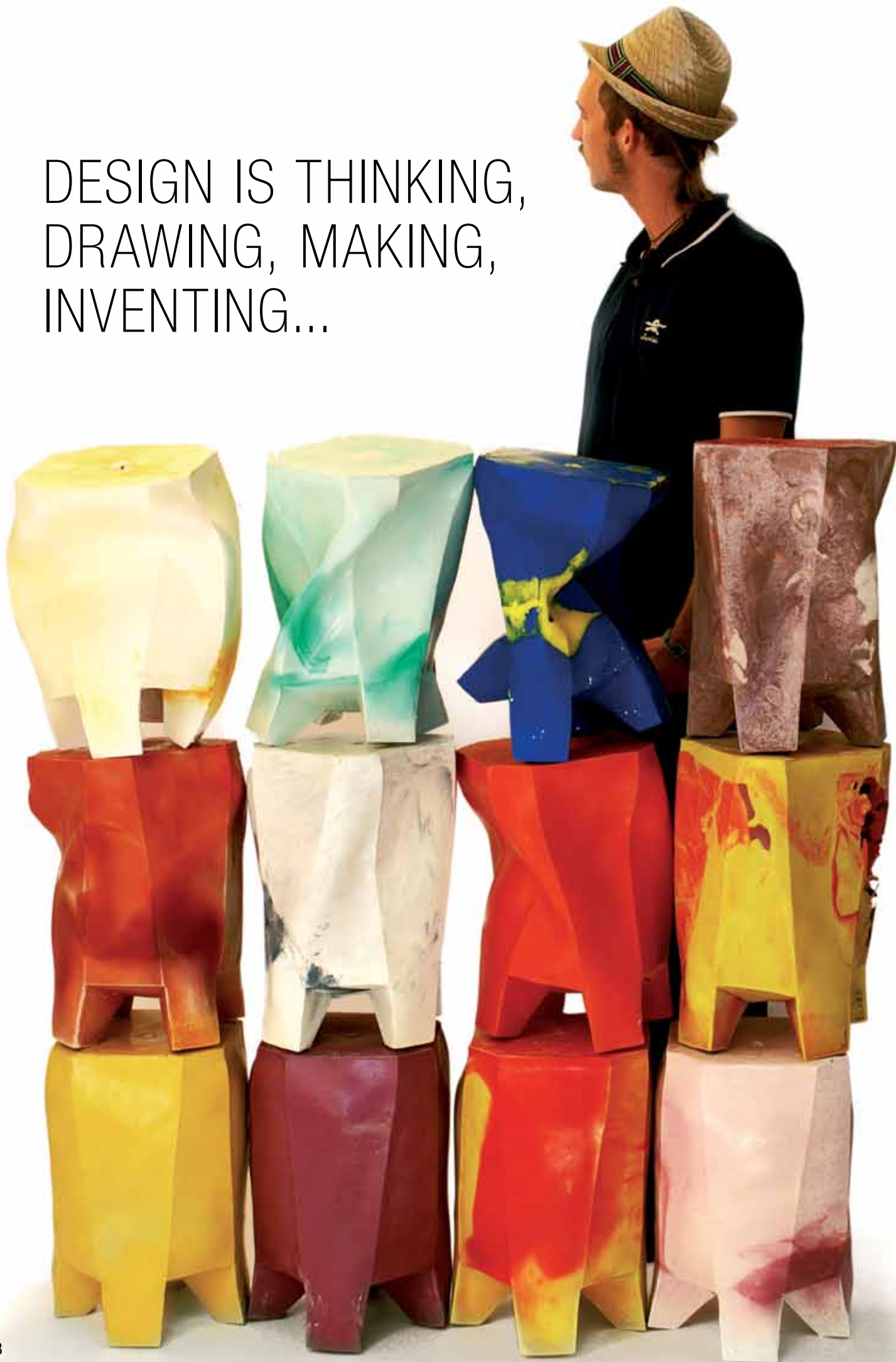
This course provides flexible, work-based learning for the experienced professional working in a design field. It provides an opportunity for you to critically reflect on your professional career to date and consider potential new directions. The MA will be awarded for learning that takes place at work or through professional creative practice.

### Course content

You will develop an individually tailored programme of study, approved in the form of a Learning Agreement. This can consist entirely of individual learning goals based on your past professional achievement (for which you submit evidence in the form of a portfolio) and current and new professional practice, accompanied at each stage by written commentary and critical reflection. Study will take place flexibly through tutorials and distance learning. You will be encouraged to undertake interdisciplinary study and challenge the conventions of your core design area. The major project enables you to develop your own professional interests and gain valuable research skills.



DESIGN IS THINKING,  
DRAWING, MAKING,  
INVENTING...



# THE DESIGN SCHOOL:

## 3D DESIGN

DESIGN IS THINKING, DRAWING, MAKING, COMMUNICATION, PERSUASION, CELEBRATING MATERIALS, INNOVATION, EXPLORING AND USING TECHNOLOGY, MANUFACTURE, MEETING NEEDS, INVENTING DESIRE... IT IS ABOUT CLOTHES, FURNITURE, SPACES, OBJECTS, DEVICES, MACHINES, IMAGES.

OUR 3D DESIGN COURSES ARE DEDICATED TO DEVELOPING CREATIVE PROFESSIONALS AS INDIVIDUALS EQUIPPED WITH THE RANGE OF SKILLS NECESSARY TO NEGOTIATE THE COMPLEX WORLD OF THE DESIGN INDUSTRIES. OUR TEACHING TEAM COMPRISES EXPERIENCED DESIGN PRACTITIONERS, VISITING TUTORS FROM INDUSTRY AND MANY SPECIALIST SUPPORT STAFF.

### POSTGRADUATE CERTIFICATE IN HIGHER EDUCATION

All 3D Design courses can include a PgCert in HE, which will enable you to develop your design practice while providing the qualifications and experience to establish a career in higher education.

### RESOURCES

Within the Faculty there is a number of newly rebuilt workshops facilitating activities from the most straightforward piece of woodworking to the latest laser-cutting and rapid prototyping.

We have digital media workshops, photography and moving-image studios, and an excellent library and Learning Resources Centre (to find out more, see page 60). The School is also host to Rematerialise, a world-leading library of recycled and sustainable materials.

### RESEARCH AREAS

Staff within the School of 3D Design are engaged in researching many areas of design practice and design history. Topics include transportation, prefabrication, colour in environments, recycled and sustainable materials, digital media and clothing, curating, exhibition design, fashion design and production, and many other areas. For information about research in the Faculty, see [www.kingston.ac.uk/fada/research](http://www.kingston.ac.uk/fada/research)

Left: *Original Stools* by Sascha Mikel

## DESIGN: HEALTH & WELLBEING MA/MSc

FT PT

[www.kingston.ac.uk/pgdesignhealth](http://www.kingston.ac.uk/pgdesignhealth)

This course provides a rare opportunity for qualified designers and other professionals with relevant experience to access and improve our total qualitative experience of healthcare design. User experience and human-centred need are at the heart of the course's inclusive design agenda. You will develop research through practical and strategic design in response to real-life scenarios involving key stakeholders and practitioners. Links with the University's Faculty of Health and Social Care Sciences (at St George's teaching hospital, Tooting) and other institutions offer unique insight into real-world problems.

### Course content

The course provides direct access to a diverse group of health practitioners and academics, and exposure to their specialist realms. Engagement with real-life health scenarios provides critical insight into the needs of groups and individuals, both professionals and users of environments and services. Introductory workshops will equip you with key techniques (eg experience flow, meaning mapping, social networking, community interviews, user testing and feedback). Continual professional development workshops with practitioners on subjects like designing for dementia and colour and sensory design provide specialist focus. Internships are available through assisted application to organisations leading the field in healthcare architecture and design. These excellent networking opportunities will enable you to define and expand your individual subject interest and masters study agenda.

## DESIGN: PRODUCT & SPACE MA

FT PT

[www.kingston.ac.uk/pgdesign](http://www.kingston.ac.uk/pgdesign)

This course offers a space for students to exercise their own design curiosity and motivation within the broad spectrum of product and spatial design. There are no predetermined leads to follow, simply an expectation to challenge and take risks rather than to passively accept. In this spirit, design is seen as a journey of discovery and a genuine means to provoke change. Students from a range of international design disciplines create a lively studio environment.

### Course content

More emphasis is placed upon 'how' than 'what' you will study. Students take responsibility for shaping their specific study interest with support from the staff team. This evolves through a series of three-dimensional design projects encouraging the expression of creative insight and viewpoint. Designing through making is integral, and the extensive 3D workshop is fully utilised. Design workshops and a lecture series to stimulate creative freedom run in parallel, and opportunity for greater interdisciplinary collaboration and group work is provided by live industry projects. Regular visiting studio tutors include Harry Richardson of 'Committee' and Simon Hasan. Other visitors/collaborators to date have included Frank Duffy, Land Design Studio, Colin Davies, Jason Bruges Studio, Mischer Traxler, WGSN, Givaudan, the V&A and iGuzzini.

## PRODUCTION DESIGN FOR FILM & TV MA

FT PT

[www.kingston.ac.uk/pgfilmtvproduction](http://www.kingston.ac.uk/pgfilmtvproduction)

If you would like to develop the traditional and technological skills needed for entry into an art department in the film and television industry, this course is ideal. It offers one of the few opportunities internationally to focus on scenic art direction in postgraduate study. The course has been designed to utilise your existing areas of expertise in a related discipline – which can range from fine art to architecture – and add those required for professional practice.

### Course content

You will develop skills in production design for both a studio environment particular for television, or script-driven drama intended for television or cinema. In the former you will deal with the creation of a purely televisual world, designing built scenic elements and using lighting and technology such as LED screens to create a particular environment. For drama productions you will learn how to enhance the script through the visual elements, dealing with the architectural structure of the set, the practical lighting, locations, the choice of colour and texture in the form of props and fabrics, as well as the practical management of the process.



Kristina Bookall (pictured), an international student who graduated in 2010, was awarded one of the prestigious BBC Vision traineeships for 2010–11 and has spent the year working on a number of productions ranging from *Silent Witness* to the latest adaptation of *Great Expectations*.





We've invested heavily in our campus to provide great workshops with the latest equipment, including our 3D materials workshop (pictured).





# THE DESIGN SCHOOL:

## FASHION

KINGSTON UNIVERSITY'S FASHION DEPARTMENT IS RENOWNED FOR ITS CONNECTIONS WITH INDUSTRY. IN RECENT YEARS, MA FASHION STUDENTS HAVE TAKEN PART IN VAUXHALL FASHION SCOUT'S EMERGING TALENT EVENT, HELD DURING LONDON FASHION WEEK. IN 2011, THE EVENT AT FREEMASONS HALL, LONDON, COMPRISED A CATWALK SHOW (PICTURED) FROM OUR FASHION DESIGN COLLECTIVE AND AN EXHIBITION, BODY LABORATORY, CURATED BY MA FASHION GRADUATE VITA WOODS.

MA FASHION STUDENTS ALSO TAKE PART IN THE FACULTY'S ANNUAL POSTGRADUATE EXHIBITION, HELD RECENTLY DURING THE LONDON DESIGN FESTIVAL AT THE TRUMAN GALLERY, BRICK LANE. THIS GIVES STUDENTS ACCESS TO ANOTHER FANTASTIC PLATFORM IN WHICH TO DEBATE, EXCHANGE IDEAS AND EXHIBIT THEIR TALENTS.

## FASHION MA

**FT PT**

[www.kingston.ac.uk/pgfashion](http://www.kingston.ac.uk/pgfashion)

This innovative course is aimed at dynamic designers with a thirst for fashion innovation. Its unique focus encourages designers to question the body as 'architecture', as 'language' and as 'landscape'. There are a number of special features to our course: an emphasis on new technologies; the involvement of leading practitioners in the field of ethical, sustainable or slow fashion; the collaborative experience of working in our Fashion Lab collective and the opportunity to explore and experiment in interdisciplinary teams.

### Course content

Fashion acts as a barometer of our times. You will observe and respond to contemporary rituals of dress, identifying new codes and modalities in the creation of future silhouettes within our Fashion Lab. Taught to identify creative narratives to produce and inspire future fashioning for the body, you will address the nuances that will drive and establish you as a leading fashion thinker. We encourage our students to address the role that fashion plays in the 21st century and to engage with important areas of development. As the leading ateliers embrace the area of 'hybrid design', we too will explore new mediums to create fashion, through digital design, rapid manufacture, soft technology, high-tech product processes, bio-textiles and nano-technology.

## FASHION MARKETING\* MA

**FT PT**

[www.kingston.ac.uk/pgfashionmarketing](http://www.kingston.ac.uk/pgfashionmarketing)

This Fashion Marketing MA is aimed at talented and creative graduates who are committed to pursuing a career in fashion marketing. It offers you the opportunity to develop your knowledge, understanding and practice of fashion marketing within a creative context of diversity and change.

### Course content

Situated in Kingston's internationally recognised Design and Business Schools, Fashion Marketing MA is a new course that aims to put graduate students on the cutting edge of the fashion industry. Working alongside students of fashion design, fashion journalism, marketing and business, you will gain insight into the interdisciplinary practice of fashion marketing and the innovative and central role it plays in the global fashion business and industry.

*\*At the time of writing, this course was awaiting validation. Please check the webpage for the latest information.*

## FASHION JOURNALISM MA

**FT**

[www.kingston.ac.uk/pgfashionjournalism](http://www.kingston.ac.uk/pgfashionjournalism)

This MA is designed to equip you with the practical and critical skills you will need to succeed in fashion journalism – one of the most absorbing and interesting careers on offer in this sphere today. The course is unique in offering immersion within the professional and creative contexts of both the fashion and media industries, and brings together two of the University's most flourishing and well-respected areas of study.

### Course content

Delivered by practitioners and experts from the fields of journalism and fashion, the course covers key journalistic skills including news and feature writing, researching, interviewing and sub-editing. You will also engage in debate about the state and future of fashion journalism and the industry, and the legal, ethical and commercial contexts in which fashion journalists operate. Journalism knowledge and skills are delivered through lectures, seminars and writing workshops. You will participate in practical exercises, group work, discussion, independent writing, individual research and reading. You will also cover contextual studies, engaging in individual and collaborative practical projects that will develop your knowledge of fashion and your own creative process. You can work towards realising an ambitious personal masters project, complete a dissertation, or undertake a work-based learning project.

## FASHION RETAIL\* MA

**FT PT**

[www.kingston.ac.uk/pgfashionretail](http://www.kingston.ac.uk/pgfashionretail)

Taught by a diverse range of fashion and retail practitioners, researchers and professionals, this MA is aimed at talented and creative graduates who are committed to a career working at the interface between fashion professionals, such as designers and business people, and the consumer on the street or online to determine what consumers will be buying in the months and years to come. Working alongside students of fashion design, fashion journalism, marketing and business, you will gain an insight into the interdisciplinary practice of fashion retail and the innovative and central role it plays in the global fashion business and industry.

### Course content

The course provides an understanding of fashion retailing as an innovative and creative process that works at the forefront of technological innovation. You will gain the opportunity to embed the specialist marketing skills and knowledge you will learn in the Kingston Business School within the creative contexts of the Design School. The course offers a range of different learning experiences, including traditional lectures, seminars and workshops, but makes great use of creative project-based work. These projects offer the chance to develop your work and specialist areas of interest towards the fashion retail career you wish to pursue.

*\*At the time of writing, this course was awaiting validation. Please check the webpage for the latest information.*



# DIGITAL MEDIA KINGSTON

IN THE FAST-GROWING DIGITAL INDUSTRIES, PEOPLE WITH CREATIVE AND TECHNICAL BACKGROUNDS WORK TOGETHER. HOWEVER, STUDENTS FROM ARTS AND COMPUTING OFTEN DON'T HAVE THE OPPORTUNITY TO COLLABORATE ON PROJECTS UNTIL THEY MEET IN THE WORLD OF WORK. OUR NEW DIGITAL MEDIA KINGSTON (DMK) COURSES AIM TO ADDRESS THIS ISSUE, ENCOURAGING COLLABORATIVE INNOVATION BETWEEN STUDENTS FROM DIFFERENT BACKGROUNDS.

THE COURSES HAVE BEEN DESIGNED WITH HELP FROM COMPANIES SUCH AS DREAMWORKS, SONY COMPUTER ENTERTAINMENT EUROPE AND SAMSUNG DESIGN EUROPE.



## MA OR MSc?

All the courses offer MA and MSc routes, depending on your background, expertise and intended career route. Both arts and science-based students will work together on projects that have been designed to foster collaborative innovation, utilising the digital media expertise and resources from across the University.

## REAL-WORLD EXPERIENCE

The courses have a project-based curriculum where teamwork is encouraged. This industry-focused learning experience enables you to hone your own specialist skills in a professional context. Work placements, real projects, internships and an industry mentoring scheme mean these courses will arm you for entry into the fast-growing and highly competitive digital media arena.

[www.digitalmediakingston.com](http://www.digitalmediakingston.com)



## GAMES DEVELOPMENT MA/MSc

FT PT

[www.kingston.ac.uk/pggamesdevelopmentma](http://www.kingston.ac.uk/pggamesdevelopmentma)  
[www.kingston.ac.uk/pggamesdevelopmentmsc](http://www.kingston.ac.uk/pggamesdevelopmentmsc)

This route of our Digital Media programme focuses on games development, including the craft of modelling, computer animation and visual effects. Depending on whether you choose to study an MA or MSc, the course content will vary to specialise either in design or programming skills.

### Course content

The course begins with introductory collaborative modules that are shared across our Digital Media courses. You will then develop a thorough understanding of the core 3D graphics of modelling, shading, lighting, rendering, animation and rigging and associated skills, such as rotoscoping and match-moving. The MA core modules cover the development of experiential interfaces and games design principles, while option modules enable you to develop an individual design project and/or specialise in narrative, audio or experience design. The MSc core modules cover 3D graphics programming and the underpinning mathematics, physics and coding skills, while option modules enable you to develop an individual design project and/or specialise in development methods, multimedia and/or networked communications.

## USER EXPERIENCE DESIGN MA/MSc

FT PT

[www.kingston.ac.uk/pguserexperiencedesignma](http://www.kingston.ac.uk/pguserexperiencedesignma)  
[www.kingston.ac.uk/pguserexperiencedesignmsc](http://www.kingston.ac.uk/pguserexperiencedesignmsc)

This route of our Digital Media programme focuses on user-experience design, including the core skills that underpin user-centred development. Depending on whether you choose to study an MA or MSc, the course content will vary to specialise either in design or prototyping skills.

### Course content

The course begins with introductory collaborative modules that are shared across our Digital Media courses. The second part of the course looks at the core skills behind user-centred design and development, focusing on multimodal, multimedia user interfaces and how they support compelling user experiences. You will be encouraged to explore and integrate a range of relevant theories and methodologies into experience design proposals and/or engineering prototypes. The second part of the course also focuses on developing and contributing to projects in collaboration with other students from across the full DMK suite.

The MA options cover creative research methods, digital audio, e-commerce or games design; while the MSc options include digital audio, e-commerce and mark-up languages.

For your final project, you will take a professional role (eg user interface designer, user experience designer, information architect, etc.) in a team with other students to produce a professional piece of work, and/or undertake an internship.

## 3D COMPUTER GENERATED IMAGERY MA/MSc

FT PT

[www.kingston.ac.uk/pgcomputergeneratedimageryma](http://www.kingston.ac.uk/pgcomputergeneratedimageryma)  
[www.kingston.ac.uk/pgcomputergeneratedimagerymsc](http://www.kingston.ac.uk/pgcomputergeneratedimagerymsc)

This course provides the opportunity to study professional digital media practices, focusing on 3D CGI, including the craft of computer animation and visual effects. The course content will specialise either in the design skills (MA) or programming skills (MSc) necessary for the field of 3D CGI.

### Course content

The course begins with introductory collaborative modules that are shared across our Digital Media courses. The second part of the course is shared with the Games Development MA / MSc students and develops a portfolio of project work including modelling skills, shading, lighting, rendering, animation and rigging and associated skills such as rotoscoping and match moving. The specialist MA modules focus on digital modelling and texturing with the option of character rigging, and developing innovative project work that can be produced in collaboration with other students from across the whole suite. The specialist MSc modules focus on high-level 3D graphics programming for games and character rigging.

## NEWS

Digital Media Kingston has enjoyed considerable success with its first year of graduates:

- Students are undertaking paid internships as their final masters projects at Seren, Mydeco, UI Centric, WilsonFletcher and IBM.
- Core staff were invited to join the Academic Advisory Board for Sony Computer Entertainment Europe, which is allowing student teams to take part in PlayStation development opportunities.
- The DMK Industry Dinner at Somerset House gave students a unique networking opportunity and highlighted support for the DMK programme from important industry players such as Microsoft, Thales, LBi and Supermassive Games.
- DMK showcased this years' student work at the Develop Conference in Brighton in July (2011).

# SCHOOL OF FINE ART

## OUR COURSES

Fine Art at Kingston reflects exciting, new, convergent practices and encourages dialogue between traditional and emerging genres. Priority is given to individual artistic practice, the making of works and the understanding of this within the context of contemporary art. Committed and enthusiastic teaching staff, innovative courses and excellent student support ensure that you will receive a high-quality educational experience.

## OUR STAFF

Leading practitioners are involved in the development of our courses, and you'll be taught by specialists whose collective experience offers a broad teaching platform and a range of practical and conceptual inputs.

## OUR RESEARCH

The Contemporary Art Research Centre aims to build and provide an intellectual and creative milieu for innovation in contemporary fine art.

Taking its identity from Andre Breton's articulation of the imagination, we draw on the legacy of surrealism to conceptualise our project of innovation.

The Centre is divided into four interconnected spaces for discussion and action:

- Foyer – art and social context
- Machine Room – art and technology
- Hall of Records – art and epistemology
- Lumber Room – art and materiality

You can play a part in shaping work and ideas in these areas. For more details, visit: [www.kingston.ac.uk/fada/contemporaryart](http://www.kingston.ac.uk/fada/contemporaryart)

## PROFESSIONAL CONTACTS

We are host to many visiting professionals from the fields of fine art, architecture, curation and design, bringing additional expertise to our teaching team.

Students also benefit from site visits to supplement their learning; collaboration with external organisations and individuals within other specialist areas; and the chance to extend professional practice experience through a placement and residency. In addition, there is the opportunity to participate in exhibitions in the University's on-site gallery.

Right: Amaia LaCalle Clemente's *Cacophony of Bar Codes*, awarded best in show at our 2010 MA degree Show







## ART & SPACE MA

FT PT

[www.kingston.ac.uk/pgartspace](http://www.kingston.ac.uk/pgartspace)

If you have a fine art, architecture or design background and would like to develop your professional practice within the public realm, this dynamic, production-based course is ideal. It enables you to identify and locate spaces in which to make and 'test' your work in the public domain, through site-specific work, performance and sound installation, internet activity, print-based publication, etc.

### Course content

You will have the opportunity to develop and apply critical frameworks, debate a range of theoretical, cultural and social issues, and consider a variety of approaches to communicating and publishing your own research. You will focus on individual and collaborative practices, new technology, exhibition production and design, and a theoretical and critical programme to challenge and contextualise individual research and the placement of work in the public domain. In addition, you will become familiar with the processes necessary to initiate and realise projects, developing and presenting proposals and collaborative working structures. You will also explore the relationship between art, architecture, design and public space by working alongside fine artists, architects and designers.

## EUROPEAN ART PRACTICE MA

FT PT

[www.kingston.ac.uk/pgeuroart](http://www.kingston.ac.uk/pgeuroart)

This is an innovative course and the only one of its kind in the UK that provides you with the technical and critical means and experience to work as a professional artist in the European arena. Based at Kingston, but including a placement and exhibition project in a major European city, you will work and learn within a growing Europe-wide network of artists, curators, galleries and museums.

### Course content

Through a combination of studio project and theoretical study at Kingston University, together with a one-week intensive course in Zurich, Switzerland, you will have the opportunity to develop and apply your chosen art practices. You will also focus on the concept of 'transdisciplinarity', with an emphasis on learning from practice and through discursivity and topicality. Within this, there is a further emphasis on making findings public – by means of exhibitions, websites, publications and events. Through the programme of practical projects that you will undertake, you will investigate and research the artistic ideas and cultural policies that are currently being pursued in different cities in Europe.

## EXPERIMENTAL FILM MA

FT PT

[www.kingston.ac.uk/pgexperimentalfilm](http://www.kingston.ac.uk/pgexperimentalfilm)

This new course has been designed to offer a genuinely creative methodology and understanding of current and future potential for film experimentation, placing the programme at the forefront of postgraduate studies exploring film and video in its most creative, cutting-edge form. The course will enable you to develop a major body of practical work created within the context of a critical understanding of contemporary experimental film theory and visual culture.

### Course content

The curriculum will offer four distinct areas of critical and practical enquiry supported by a specialised seminar/lectures series: independent film; film as installation; the materiality of film; and 3D cinematography.

You will undertake self-initiated research supported by taught modules and an experienced group of research-active staff, and will explore the critical and historical frameworks within which experimental film work can be understood and conceptualised.

## FINE ART WITH LEARNING & TEACHING IN HE MA

FT PT

[www.kingston.ac.uk/pgfinearthe](http://www.kingston.ac.uk/pgfinearthe)

This MA develops your fine art practice while giving you the qualifications and experience you need to develop a career in higher education. It is ideal if you have had some professional experience and would like to apply your expertise within higher education. The PgCert in HE is increasingly a requirement for new teachers in further and higher education; the University runs a well-established and very successful PgCert in HE in-house.

### Course content

Through a combination of studio project and theoretical study, you will develop and apply critical frameworks, debate theoretical, cultural and social issues, and consider approaches to communicating and publishing your own research. You will focus on individual and collaborative practices, new technology, exhibition production and design, and a theoretical and critical programme to challenge and contextualise individual research. You will be tutored and managed by the course director, who has many years' experience of professional practice and pedagogy in art and design higher education.

You will have the opportunity to develop your fine art practice through individual and team projects, and to carry out your teaching practice alongside experienced academic fine art staff.

## FINE ART MFA

FT PT

[www.kingston.ac.uk/pgfineart](http://www.kingston.ac.uk/pgfineart)

**This is a studio-based, research-centred programme for those who wish to explore the subtle and complex relationships between the production and display of contemporary art within the context of professional excellence. It will challenge you to develop your personal vision and create clear, meaningful and appropriate work to consolidate and strengthen your position as an artist.**

### Course content

The MFA Fine Art incorporates a taught programme that primarily demands a considerable degree of investigation and experimentation. You will focus on practical and theoretical issues surrounding the development of fine art practice in relation to specific contexts, and will be required to interrogate the positioning of your practice through curatorial intervention and collaboration, providing preparation for professional practice and/or further research. You will also be encouraged to create interdisciplinary alliances and will have the opportunity to work in a variety of environments both individually and collaboratively. You will develop a self-initiated project to both challenge and explore current fine art principles, and extend the concept of exhibition and its dialogue.

## PHOTOGRAPHY MA

FT PT

[www.kingston.ac.uk/pgphotography](http://www.kingston.ac.uk/pgphotography)

**This course offers a unique opportunity for photographers to develop a major body of practical work that engages with the photographic image within the context of a critical understanding of contemporary photography and visual culture. The course encompasses a broad and developing range of approaches to photography. It recognises that photographers increasingly explore the potential of the medium in unexpected and innovative ways, finding outlets for their work in a variety of forms and organisations.**

### Course content

You will gain a thorough critical understanding of photography through self-initiated research supported by taught modules and an experienced group of research-active staff. This will enable you to play a positive role in the fast-moving arena of image making, as well as equipping you with a thorough understanding of the critical and historical frameworks within which photography can be understood and conceptualised. Working alongside colleagues on other courses in the School of Fine Art, you will be encouraged to create interdisciplinary alliances and will have the opportunity to work in a variety of environments, both individually and collaboratively.





# STANLEY PICKER GALLERY

ONE OF JUST A HANDFUL OF NEW LONDON ARTS ORGANISATIONS TO RECEIVE FUNDING UNDER ARTS COUNCIL ENGLAND'S NEW NATIONAL PORTFOLIO FUNDING PROGRAMME, THE STANLEY PICKER GALLERY BRINGS AN AMBITIOUS AND EXPERIMENTAL PROGRAMME OF EXHIBITIONS, PROJECTS, EVENTS AND EDUCATION INITIATIVES TO KINGSTON.

## RECENT EXHIBITIONS AT THE GALLERY

### **Becky Beasley: 8th May 1904, Kingston**

Over the course of more than a year, artist Becky Beasley visited Kingston Museum archives to research some of the many ambiguities in the life story of Victorian photographic pioneer Eadweard Muybridge (Kingston upon Thames 1830–1904). For her resulting solo exhibition, she transformed the Gallery into a dramatic aerial landscape inspired by a story about how Muybridge was reputed to be constructing a scale model of the American Great Lakes in his back garden in Kingston at the end of his life.

### **Ab Rogers Design: A Day in the Life of Ernesto Bones**

Ab Rogers Design's Stanley Picker Fellowship project included written contributions from Heston Blumenthal, Andrea Branzi, Charlotte Cullinan, John Hegarty, Ben Kelly, Sara Fanelli, Shelley Fox and Adrian Searle, among others.

Inspired by the Surrealist game Exquisite Corpse and using as a starting point objects from the Stanley Picker House designed by Kenneth Wood in 1968, they created the fictional tale of Ernesto Bones – the final intriguing exhibition developed in close collaboration with Faculty students.



“MY NAME IS ERNESTO BONES AND I WRITE TO YOU WITH AN IMPORTANT REQUEST. I HAVE A VERY SERIOUS PROBLEM THAT ONLY YOU CAN HELP FIX. YOU SEE, THOUGH I AM WRITING TO YOU NOW, I DO NOT YET TRULY EXIST...”





# NEWS

## **BRITISH ART SHOW 7**

Several artists with connections to the Faculty and the Stanley Picker Gallery were featured in the British Art Show 7 – an exhibition of the most ambitious and influential contemporary British art from the last five years.

Among the 39 artists shown were duo Charlotte Cullinan and Jeanine Richards, who lecture part time at the University and create art as Cullinan Richards. Also included were previous Stanley Picker Fellows Elizabeth Price and Milena Dragicevic, the new fellow Matthew Darbyshire and the Muybridge-in-Kingston Contemporary Commission artist Becky Beasley.

[www.britishartshow.co.uk](http://www.britishartshow.co.uk)

## **SYMPOSIUM AT WHITECHAPEL GALLERY**

'Art: What's the Use?' was a symposium run at the Whitechapel Gallery in East London, organised in association with the Stanley Picker Gallery's public lectures programme, and our Visual and Material Culture and Contemporary Art research centres.

The event considered questions such as: What is the use/ value of art today, how is it useful, and for whom? What are the particular imaginative and cognitive skills, competences and approaches that could take effect as part of the general symbolic economy beyond the art world? What are the lessons and influences of movements that sought an unambiguously social and political function for their experiments? And, finally, what are the conditions that enable artists not simply to reflect upon the world, but to also act within and change it?

Participants included Artur Zmijewski, Dmitry Vilensky (Chto Delat), James Marriott and Jane Trowell (PLATFORM), John Roberts, Stephen Wright, Marina Vishmidt, Peter Osborne and Gail Day.



# SCHOOL OF SURVEYING & PLANNING

## OUR COURSES

Courses within the School of Surveying & Planning focus on the broad range of surveying specialisms, such as real estate, building surveying and quantity surveying, as well as property development. These have been supplemented by spatial planning and place-making programmes. Each course is tailored to a particular aspect of both the surveying and planning professions, providing a firm grounding in general property, development and place-making issues. A commitment to sustainability is at the heart of all our courses.

Most courses are accredited by professional bodies such as the Royal Institution of Chartered Surveyors (RICS), the Chartered Institute of Building (CIOB) and the Royal Town Planning Institute (RTPI), empowering you to make the transition to professional practice, whatever your market focus. We also run short courses geared toward the RICS final Assessment of Professional Competence, as well as a series of continuing professional development lectures and seminars.

The School has achieved the status of Centre for Excellence in Teaching and Learning (CETL), one of only 74 in the country and the only one situated within a built environment school.

## EXCITING COURSE DEVELOPMENTS

New courses that are being developed within the School include the MBA Real Estate and two new pathways for the MSc Real Estate: Development and Investment, and Sustainable Asset Management and Valuation. For more details, see [www.kingston.ac.uk/pgrealestate](http://www.kingston.ac.uk/pgrealestate)

## OUR STAFF

Our staff have established reputations in industry and in research and are eminent in their fields – their diverse areas of interest ensure a lively and stimulating learning environment. Teaching is complemented by input from visiting speakers who have significant contemporary professional experience.

We are a partner institution of the RICS, and several staff members are active within the CIOB. Links with the RTPI are developing through staff membership, our PhD programme and course accreditation.

## OUR RESEARCH

Particular areas of interest relate primarily to sustainability, as it affects our communities and the whole of the building lifecycle. Most research is managed through the Real Estate Research Centre, the Centre for Sustainable Construction, and C-SCAIPE: Centre for Sustainable Communities Achieved through Integrated Professional Education. C-SCAIPE aims to promote a holistic view of sustainable principles and to engender change in industry and drive forward the ambitions for a more sustainable society. For more information about research within the Faculty, see pages 56–59 or visit [www.kingston.ac.uk/fada/research](http://www.kingston.ac.uk/fada/research)









## ART MARKET APPRAISAL MA

FT PT

[www.kingston.ac.uk/pgartmarket](http://www.kingston.ac.uk/pgartmarket)

If you are interested in developing a career in the art market, particularly in the appraisal of both fine and decorative arts and other artefacts, this course is ideal. It offers a unique mix of academic tuition and exposure to London's huge and dynamic art market. Accredited by the Royal Institution of Chartered Surveyors (RICS), the course leads to entry to the RICS as a probationary member.

### Course content

With an emphasis on understanding how the art market functions, you will be introduced to a wide range of businesses, collections and professionals. You will also study the economic and legal context within which professional practice is grounded, and gain the ability to apply techniques related to the evaluation of objects in a practice environment. You will have the opportunity to develop your knowledge of a particular specialist area of the art market, which may include anything from antiquities to cutting-edge contemporary art.

## BUILDING SURVEYING MSc

FT PT

[www.kingston.ac.uk/pgbuildingsurveying](http://www.kingston.ac.uk/pgbuildingsurveying)

This course is ideal if you did not study building surveying at undergraduate level, but would like to enter the profession and require a 'conversion' course\*. The course draws on the strength of project work, which is a particular speciality of the School, and the developing sustainability agenda. The course is fully accredited by the Royal Institution of Chartered Surveyors (RICS).

### Course content

You will gain knowledge of building materials, construction technology and pathology; specialist legal and regulatory issues; the design of simple structures; and the preparation of schemes for the rehabilitation of buildings. The course focuses on the core competencies of the building surveyor and professional builder operating at local, regional and national levels. It takes into account the developing sustainability agenda with which construction professionals must increasingly engage, together with multidisciplinary requirements specific to building surveying. It also focuses on UK requirements and contains European and global perspectives appropriate to the requirements of international consultancies.

*\*Due to the intensive and technical nature of the curriculum, most graduates who enter the course will have first degree in a semi-related discipline; or practical experience of working within the industry.*

## HISTORIC BUILDING CONSERVATION MSc

FT PT

[www.kingston.ac.uk/pgbuildingconservation](http://www.kingston.ac.uk/pgbuildingconservation)

This course enables you to become a surveying professional within the specialist field of historic building conservation. London is rich in its collection of historic buildings, and the course team places great emphasis on using these to illustrate the various elements of the course. In particular, past and ongoing works at the Historic Royal Palaces are used as the basis for project work. The course is fully accredited by the Royal Institution of Chartered Surveyors.

### Course content

The course is designed to balance strategic analysis with a good working knowledge of core techniques. You will acquire the skills and knowledge to extend your practice base to include the specialist field of historic building conservation. A week-long field trip to a European city will provide the opportunity to further develop your technical knowledge and embed it within a practice scenario. You will take part in our Masters Student Conference, in which all completing students present their dissertation findings in a formal, London-based conference attended by colleagues and practitioners.

*\*Because of the specialist nature of the course, ideally you will already possess a degree in a closely related subject (such as building surveying), or have practical, relevant experience.*

## PLANNING & SUSTAINABILITY MA

FT PT

[www.kingston.ac.uk/pgplansustain](http://www.kingston.ac.uk/pgplansustain)

If you would like to specialise in planning and land development but your interests extend beyond issues of profitability, risk and return to include the wellbeing of communities and issues of sustainability, then this course is ideal. It is designed to integrate the theory and practice of spatial or town and country planning with the growing necessity for urban and rural developments to meet community needs and sustainable criteria. The course is accredited by the Royal Town Planning Institute (RTPI) and the Royal Institution of Chartered Surveyors (RICS).

### Course content

The course is split between taught and research modules. In the taught section, you will be introduced to the concepts of sustainability, regeneration and urban design, and will gain an understanding of the legal and institutional frameworks governing land development. You will also discover how urban environments can be planned and developed to meet sustainable criteria. As part of the course you will be invited to attend a week-long field trip to a major UK or European city, where you will undertake a project with a sustainability theme.

The research element of the curriculum comprises training in research methods, the preparation and presentation of a conference paper, and a dissertation or masters project.

## QUANTITY SURVEYING MSc

**FT PT**

[www.kingston.ac.uk/pgqs](http://www.kingston.ac.uk/pgqs)

Quantity surveyors play a key role in the construction industry, ensuring that development costs are appropriately and accurately managed. Kingston University is a long-established Royal Institution of Chartered Surveyors (RICS) partner university and this course, which is accredited in full by the RICS, will equip you with the skills and knowledge to start you on a career that offers enormous scope for teamworking, travel and financial rewards.

### Course content

The course provides an opportunity to graduates from disciplines other than surveying to convert their transferable skills and extend their abilities in a critical way to the quantity surveying profession. You will develop in-depth knowledge and understanding of procurement, construction contracts and their administration. You will acquire sound knowledge of construction economics and cost planning. The curriculum further places emphasis on the EU and UK legal framework relating to construction, sustainable construction technology and strategic project management. A week-long field trip to a major European city will provide you with the opportunity to apply your knowledge and understanding to a simulated real-life project scenario. In addition to the core taught modules, you will receive training on research methodology and undertake a dissertation.

## REAL ESTATE MSc

With new pathways in Development & Investment, and Sustainable Asset Management & Valuation

**FT PT**

[www.kingston.ac.uk/pgrealestate](http://www.kingston.ac.uk/pgrealestate)

This course is ideal if you are seeking to enhance your understanding of a range of topical issues in real estate. Two new pathways have been developed to respond to a shortage of skills in the areas of development and investment, and sustainable asset management. Kingston staff have particular expertise in these fields. The course is accredited by the Royal Institution of Chartered Surveyors.

### Course content

The course will enable you to develop key research and analytical skills alongside your practical competencies. The taught element contains core modules in Real Estate Valuations and Real Estate Law Principles, together with an international project involving a week-long field trip to an international city. You will also choose option modules: subjects currently on offer include Real Estate Asset Management, Development Strategy & Funding and Sustainable Property Investment & Valuation. The research modules comprise training in research methods, the preparation and presentation of a conference paper, a critical practice project or dissertation. Most modules are delivered through e-learning methods complemented by face-to-face lectures and workshops, normally in short, intensive blocks, which is ideal if you are employed or want to study modules as CPD.

## SUSTAINABILITY FOR BUILT ENVIRONMENT PRACTICE MSc

**FT PT**

[www.kingston.ac.uk/pgsustainabilitybuiltenvironment](http://www.kingston.ac.uk/pgsustainabilitybuiltenvironment)

This course is designed to provide you with a practical, career-enhancing education in how the sustainability agenda interfaces with professional practice. Built environment professionals with an understanding of these issues have an increasingly competitive advantage.

The course is one of a suite of new pathways supported by the Kingston University Sustainability Hub, which brings together experts and professionals from a range of distinctive professional viewpoints.

### Course content

Understanding the climate change agenda, and how to respond, is central to this course. You will work with students from different pathways around key issues concerning the economy, society and the environment. The curriculum addresses a range of environmental, social and economic concerns, exploring the potential impacts on society, practical and policy responses, and regulatory mechanisms. Practical learning is central to our course philosophy – from understanding scientific principles and procedures, to learning about economic and social accountability and legal frameworks. The research project enables you to explore a particular area of interest in depth.

## SUSTAINABLE PLACE MAKING & URBAN DESIGN MA

**FT PT**

[www.kingston.ac.uk/pgsustainableplacemaking](http://www.kingston.ac.uk/pgsustainableplacemaking)

This course is ideal if you want to focus your planning studies on spatial analysis and urban design within the context of developing thriving sustainable communities and vibrant public places. The course is fully accredited by the Royal Institution of Chartered Surveyors (RICS) and currently has provisional accreditation\* from the Royal Town Planning Institute (RTPI).

### Course content

The course will help you to become a spatial planner by strengthening your visualisation of 2- and 3D forms, and your understanding of spatial relationships, to better the social and economic wellbeing of people and the environment. It will also prepare you to work with multidisciplinary teams of professionals, offering a wide range of opportunities in both public- and private-sector organisations. As part of the Sustainable Cities module, you will undertake a field study in a major European city. In the dissertation or masters project you can focus on an area of particular interest and gain valuable research skills. You will then develop this into a conference paper for presentation at the Annual Masters Conference.

*\*Full accreditation from the RTPI cannot be considered until the programme has been running for approximately two years.*



# RESEARCH

## RESEARCH FOR THE 21<sup>ST</sup> CENTURY

The Faculty of Art, Design & Architecture has a well-established and internationally renowned research culture that encourages and supports high-quality, innovative research through practice, history and theory. This rich spectrum encompasses the critical practices of fine artists, curators and cultural commentators and historians, alongside that of designers, filmmakers, architects, town planners and surveyors, all of whom have extensive professional, industrial and commercial links. Our aim is to foster a dynamic and stimulating environment that realises and supports individual and collaborative research projects. This is achieved through an exchange of ideas and practices within and across the disciplines, directly benefitting the wider academic community as well as industry, business and the public.

The Faculty's research activities were recognised as being world-leading and of international excellence in the 2008 national Research Assessment Exercise, which rates the quality of all research in UK universities. This assessment has meant that the University's research grant from the higher education funding body for England has nearly tripled. Central to these achievements are our five established research centres that provide a strong infrastructure and supportive community for staff and student research. Our postgraduate students are an important part of this community, which also includes tutors and supervisors, visiting professors and research fellows.

The strength of the Faculty's research has been recognised through the award of a number of prestigious grants from national research councils, including the Arts and Humanities Research Council (AHRC) and the Engineering and Physical Sciences Research Council (EPSRC). Significant funding has also been awarded by both the private and the public sectors, including the former Department of Trade and Industry (DTI), the Arts Council, Heritage Lottery funding, the British Academy, the British Council and the Royal Institution of Chartered Surveyors (RICS). These competitively won grants have enabled ambitious research projects, such as the Creative Resources project on recycled materials in design; research into colour, design and the environment; the Muybridge in Kingston collaboration; Kingston Africa; the Dora Gordine project based at Dorich House; and critical developments in individual and collaborative practice in fine art, design and the built environment.

Further opportunities are provided through our research collaborations established with, among others, the Architecture Foundation, the Design Council, the National Maritime Museum, the Geffrye Museum, Historic Royal Palaces and Tate Britain, as well as with international partners.

## RESEARCH DEGREES

We offer Masters by Research, MPhil and PhD degrees across the range of research areas within the Faculty. These broadly include fine art, design and film; art, architecture, design and film history; museum, gallery and heritage studies; landscape architecture; sustainable and environmental design; curating contemporary art and design; drawing; arts market appraisal; and surveying, real estate and planning.

As a research student in the Faculty you will become part of a strong and ambitious postgraduate community and will be fully supported by a rich programme of research training, including research workshops, seminars, guest lectures, symposia, exhibitions and related activities. You will also have a School-based PhD director to co-ordinate subject-specific training.

Currently we have over 70 research students across the Faculty, several of whom have secured prestigious Arts and Humanities Research Council (AHRC) research studentships, Chevening Awards, overseas government awards, industry sponsorship or University scholarships.

## MA/MSc BY RESEARCH

This flexible learning programme allows students to pursue an individual programme of research in any field, supported by research methods training and taught modules as appropriate. The degree involves investigation and evaluation of an approved research project and the presentation of a dissertation of between 10,000 and 20,000 words or equivalent for studio-based subjects. The award of MA or MSc by Research is at the same level as the MPhil, but carries half the credits (180).

The programme lasts one year full time or two years part time. To be eligible you will need a good honours degree in a related discipline. Applications will also be considered if you have no formal qualifications but can satisfy the admissions tutor of your motivation and ability to work at masters level.

## MASTER OF PHILOSOPHY (MPhil)

Typically an MPhil takes about two years full time or three/four years part time. An MPhil thesis is 20–40,000 words long, or its equivalent for studio-based research, and is the subject of an oral examination in which you will show how you have critically managed and investigated your area of research.

## DOCTOR OF PHILOSOPHY (PhD)

A PhD usually takes three to four years of full-time study or four to six years part time. You will normally be expected to have a masters degree or a good honours degree or equivalent in a subject relevant to your proposed research programme.

The PhD thesis is typically about 40–80,000 words long, or its equivalent for studio-based research. On completion it will be the subject of an oral examination in which you will show both how you have critically investigated your area of research and made an independent and original contribution to knowledge.

## FURTHER INFORMATION

To find out more about staff research and research opportunities, visit [www.kingston.ac.uk/fada/research](http://www.kingston.ac.uk/fada/research)

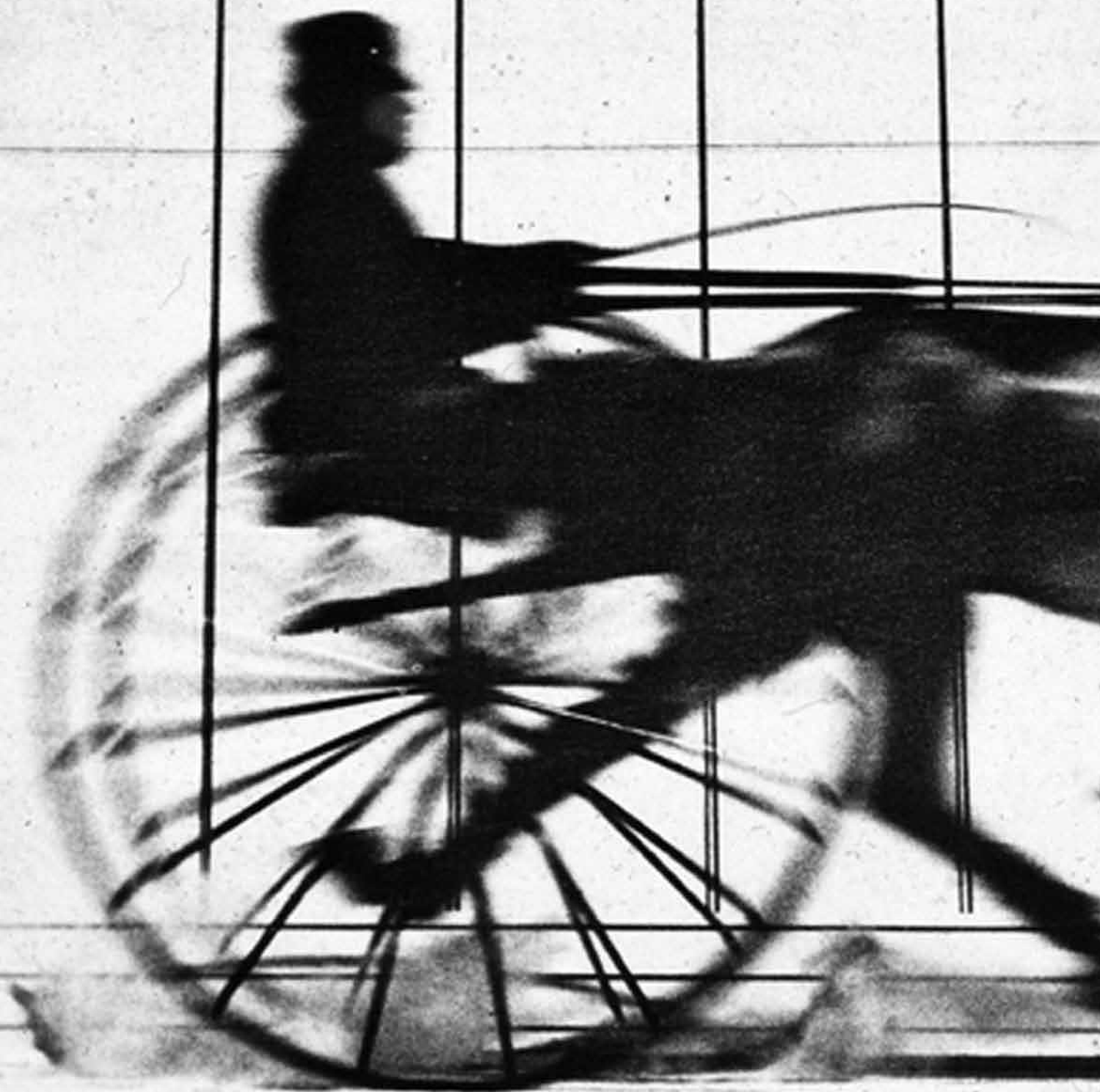
5

6

7

8

9



# RESEARCH GROUPS AND CENTRES

Staff, post-doctoral researchers and student researchers in the Faculty are part of research centres and research groups through which they engage both with collaborative and individual projects and with a range of local, national and international research events, including workshops, seminars, visiting lecture series, conferences and symposia.

## CONTEMPORARY ART RESEARCH CENTRE: CENTRE FOR USELESS SPLENDOUR

The Contemporary Art Research Centre provides an intellectual and creative milieu for innovation in contemporary fine art. Taking its identity from André Breton's articulation of the imagination, we draw on that legacy of surrealism to conceptualise our project of innovation. In this way, researchers – staff and students – seek to imagine and enact possibilities of contemporary art in contingency with social politics, technology, models of knowledge and modes of experience. The Centre focuses on four interconnected research spaces.

### Foyer – art and social context

Work in this area is concerned with propositions for agency and the generation of expanded and hybrid modes of socially sited artistic production, which is explored through collaboration, curation, writing, publishing, broadcasting and other modes of dissemination.

### Machine Room – art and technology

Work in this area focuses on how technologies, methods and processes might be understood, employed, detoured and reinvented.

### Hall of Records – art and epistemology

Work in this area considers how histories and bodies of knowledge might be generated, re-imagined and re-inscribed through work with archives and physical collections, found objects, constitutions, laws and manifestos.

### Lumber Room – art and materiality

Work in this area explores the relationships between experience, matter and noise. It considers knowledge developed through embodied temporal encounter. Attention is given to possibilities of materiality and process unfolding in the making of pictures and things, through accident and event.

**Director** Louis Nixon

**Co-Director** Sarah Jones

**E** contemporaryart@kingston.ac.uk

**www.kingston.ac.uk/fada/contemporaryart**

## DESIGN RESEARCH CENTRE

The Design Research Centre provides an environment for researchers to engage with the cultural, environmental and presentational contexts of design practice in its widest sense. Research is developed through interrelated design thematic that inform and support our postgraduate courses.

**Director** Hilary Dalke

**Associate Director** Professor Catherine McDermott

**E** designresearch@kingston.ac.uk

**www.kingston.ac.uk/fada/designresearch**

**Sustainable and Environmental Architecture** brings together specialists and expertise co-ordinated by ArchiLab in the School of Architecture and Landscape. Current activities include research, teaching and enterprise.

**E** s.pretlove@kingston.ac.uk

**Creative Resource** is a research project focusing on the sustainable development of materials and the design process. Case studies describe the impact of material culture upon innovation and the market potential of working with materials that are normally thrown away. The library in Knights Park houses over 1,200 material samples from many unexpected sources, often incorporating 100% recycled waste.

**E** j.dehn@kingston.ac.uk

**Curating the Contemporary** focuses on research in and around curatorial practice, including interdisciplinary projects and partnerships with external organisations such as the British Council, the Arts Council and Crafts Council.

**E** c.mcdermott@kingston.ac.uk

**Fashioning Luxury** is about making and communicating luxury fashion garments and artefacts in a global economy – currently exploring concepts of New Luxury in the context of world recession. It includes the design-led brand extensions of prominent fashion houses and issues of ethics and politics in relation to materials, new technology and traditional human skills.

**E** a.creigh-tyte@kingston.ac.uk

**Design for Environments** is an interdisciplinary and intersensory area of research that explores the theory and practice of design for wellbeing and health. This research is user-focused, exploring the design and environmental needs of different population groups, including the aged and infirm.

**E** h.dalke@kingston.ac.uk

**Sustainable Design and Development** – Design thinking can be an effective tool for addressing sustainable development issues, and aims to help, rather than exploit, poorer economies (through minimising environmental impact, increasing social inclusion, improving healthcare, and advancing the quality of education). These design approaches include new working methods such as 'co-designing'. The small number of UK organisations that use 'co-designing' and the methods they employ will be investigated.

**E** a.chick@kingston.ac.uk

**The City** explores massive shifts in density and regulation that are having a direct impact on the nature of domesticity and public life, both within urban and suburban contexts. This research will involve collaboration with public authorities in Croydon and with students and staff at all levels of the Faculty.

**E** d.rosbottom@kingston.ac.uk

**Interrogating/Integrating Design Practice, Theory and Pedagogy** investigates the application and influence of design practice and theory on design pedagogy, and vice versa. The application of the same design problem-solving and 'thinking out of the box' skills used by designers in professional practice will be applied to the development and debate of design learning and teaching.

**E** b.blair@kingston.ac.uk



## VISUAL AND MATERIAL CULTURE RESEARCH CENTRE

Situated at Knights Park, our Visual and Material Culture Research Centre (VAMCRC) provides the focus for energetic interdisciplinary research in modern and contemporary visual and material culture and in the histories of art, film, design and architecture. The Centre enables established international researchers, emerging scholars and students to conduct research within a stimulating and collegiate environment that seeks to shape the future of these fields of inquiry. Researchers are engaged in both individual and collaborative projects with a shared emphasis on modernity and its futures, and, since 1997, have organised a series of conferences and symposia in collaboration with major London museums and galleries.

Distinct, inter-animating areas of study are:

- Historical and Critical Studies – engaging with issues of patronage, the art market, avant-gardes, and the history of the art school
- Place, Space and Global Futures – focusing on local, national and international identity
- Gender, Technology and the Human Image
- Cultural Activism Research

Current research projects include:

- The Art of Intervention, British Council PM 12 Research Collaboration: Kingston University, London; Kyoto Seika University, Japan
- Stanley Picker: Patron and Collector
- Formations of the avant-garde in early 20th-century Paris and London
- New perspectives on modern sculpture: Ernst Eisenmayer, Dora Gordine and Ivor Roberts-Jones – Richard Dadd and Art in the Victorian Asylum
- The Independent Group
- Contemporary Photography: ‘Strange Places’

**Director** Professor Fran Lloyd

**E** [vamcrc@kingston.ac.uk](mailto:vamcrc@kingston.ac.uk)

**www.kingston.ac.uk/fada/VAMCRC**

## MODERN INTERIORS RESEARCH CENTRE

Established in 2001 and based at Dorich House Museum, Kingston's Modern Interiors Research Centre (MIRC) provides a dynamic focus for interdisciplinary research on the design of the modern interior. Its researchers work in the fields of design history, architectural history, art history, cultural history, and visual, material and spatial culture. The focus is on interiors in both domestic and non-domestic settings and an exploration of the ways in which modern interiors have been created, disseminated and consumed, with an emphasis on the influences of socio-cultural factors such as class, gender and ethnicity.

**Director** Professor Penny Sparke

**Co-Director** Professor Anne Massey

**Associate Director** Dr Trevor Keeble

**E** [mirc@kingston.ac.uk](mailto:mirc@kingston.ac.uk)

**www.kingston.ac.uk/fada/MIRC**

## CENTRE FOR RESEARCH IN MODERN EUROPEAN PHILOSOPHY

The Centre for Research in Modern European Philosophy is the leading centre for postgraduate-level study and doctoral research in Continental Philosophy in the London area. Since its inception in 1994 it has developed a national and international reputation for teaching, research and publication in the field of post-Kantian European philosophy, characterised by a strong emphasis on broad cultural and intellectual contexts and a distinctive sense of social and political engagement.

**Director** Professor Peter Osborne

**www.kingston.ac.uk/fada/research**

## REAL ESTATE RESEARCH CENTRE (RERC)

Researchers within this Centre work across a broad spread of interests relating to real estate and sustainable planning. The research takes a qualitative and reflective approach to the role of appraisal and management and the regulation of land and buildings. The work seeks to relate professional activity to changing social and political agendas.

A shared ambition of all researchers is to lead the knowledge and understanding of the relationship between the sustainability agenda and the operation of real estate markets. They are engaged in a range of exciting projects in highly focused and specialist areas relating to place making, investment-worth models, contaminated and brownfield land, taxation and fiscal incentives and the valuation of heritage assets.

Those interested in studying for research degrees in real estate and who have a relevant first or masters degree should contact the Director for an informal conversation.

**Director** Professor Sarah Sayce

**E** [erc@kingston.ac.uk](mailto:erc@kingston.ac.uk)

**www.kingston.ac.uk/fada/RERC**

## FURTHER INFORMATION

Detailed information on current staff and student research projects and knowledge-transfer activities are available on the Faculty's website.

If you are interested in becoming part of our dynamic research community as a postgraduate research student or research associate, please contact the relevant research centre director.

For further information on research within the Faculty, and to find out more about research opportunities, contact our research and enterprise support manager:

**T** +44 (0)20 8417 4295

**E** [j.nobbs@kingston.ac.uk](mailto:j.nobbs@kingston.ac.uk)

**www.kingston.ac.uk/fada/research**

# STUDYING AT KINGSTON

## LEARNING RESOURCES CENTRE

The Knights Park Learning Resources Centre (LRC) houses special collections to support the range of subjects taught in the Faculty, including examples of art deco and 1930s' interior design publications, 19th-century architectural design pattern books, artists' books and private press books.

We're currently developing the campus to provide a brand-new LRC; this will open in 2012 and will be located in a covered quadrangle on the ground floor of the building.

The LRC has zoned study areas to help you choose the best place to work – silent study, quiet study, group study, phone zones and food and drink zones. There are clusters of PCs and wireless connectivity for laptop use, including free internet and email access. For more information, including opening hours, visit [www.kingston.ac.uk/library](http://www.kingston.ac.uk/library)

## C-SCAIBE

The Centre for Sustainable Communities Achieved through Integrated Professional Education (C-Scaibe) enables students to develop a deeper understanding of sustainability and its importance in shaping the communities of the future. C-Scaibe was founded in part through a £3million grant from the UK government in recognition of our School of Surveying & Planning's excellence in teaching and learning.

[www.c-scaibe.rroom.net](http://www.c-scaibe.rroom.net)

## PART-TIME STUDY

Our postgraduate courses are designed to allow maximum flexibility by offering you part-time options and the opportunity to complement and reinforce your study with learning in the workplace. The study commitment varies depending on which course you take, with part-time courses tending to include a day per week for formal teaching. The structure of taught courses usually comprises teaching with periods of guided and self-directed study and research.

## WORK-BASED LEARNING

As a higher education award, Kingston's Architecture Professional Practice MA can be credited as continuing professional development (CPD) – individual modules can also be taken as CPD. Your primary learning environment is within practice, with support from seminar sessions and scenario-based examples. See [www.kingston.ac.uk/pgarchprofma](http://www.kingston.ac.uk/pgarchprofma)

We also offer the Professional Practice (Design) MA, a work-based learning qualification for those employed in the design industry. For more information see p37.

## ONLINE LEARNING

You will have access to StudySpace, our online learning tool designed to give you the flexibility to choose where and when you study as long as you have access to an internet-enabled computer.

StudySpace includes learning and teaching resources, multimedia material, discussion boards, Wikis and blogs, as well as providing the ability to create your own profile, networks and groups.

## FUNDING YOUR STUDIES

Your employer may offer to sponsor you through your course by providing funding, day-release from work or guaranteed study leave. If your employer has any questions, please ask them to contact the person detailed on the relevant course webpage.

For information about money matters and funding, see [www.kingston.ac.uk/pgfunding](http://www.kingston.ac.uk/pgfunding) or contact:

Student Funding Service  
Kingston University  
Cooper House  
40–46 Surbiton Road  
Kingston upon Thames  
Surrey KT1 2HX  
T +44 (0)20 8417 3553

## SUPPORT

To ensure that you receive appropriate advice regarding your academic development, we will allocate you a personal tutor on your arrival.

As a Kingston University student, you will have access to the University's Careers and Employability Service and health and counselling services, as well as the Fitness Centre and Students' Union sports and social clubs. The University also has a nursery, open 49 weeks a year, with places for 24 children between the ages of two and five years.

See [www.kingston.ac.uk/pgsupport](http://www.kingston.ac.uk/pgsupport) to find out more, including information about accommodation options.

## OPEN DAYS

To find out more about how we can ensure your success, why not pay us a visit?

Contact our postgraduate administrator on +44 (0)20 8417 4646 for the dates of the next open days or visit our online booking system: [www.kingston.ac.uk/fadaevents](http://www.kingston.ac.uk/fadaevents)





### DORICH HOUSE MUSEUM

Dorich House, which stands on the Kingston side of Richmond Park, is a fascinating example of 1930s' modernism. It was created by the sculptor Dora Gordine and her husband Richard Hare, who designed and lived in the property until 1991.

Since 1994, the Grade II listed building has been renovated and restored by Kingston University, which now cares for the house and the couple's extensive collections of sculpture and Russian Imperial art. It has been developed as a resource and study centre and was awarded Registered Museum status in 2004.

An archive comprising press cuttings, photographs, architectural drawings, books and taped interviews can be found on the ground floor of the House. The archive is open to researchers by appointment with the curator.

[www.kingston.ac.uk/dorich](http://www.kingston.ac.uk/dorich)



# APPLICATIONS AND FURTHER INFORMATION

## FURTHER INFORMATION

### Taught courses

Faculty of Art, Design & Architecture  
Kingston University  
Knights Park  
Kingston upon Thames  
Surrey KT1 2QJ  
**T** +44 (0)20 8417 4646  
**F** +44 (0)20 8547 8272

### Research degrees

For further information on research degrees, see page 56 or contact:  
Research Administrator  
Faculty of Art, Design & Architecture  
Kingston University  
Knights Park  
Kingston upon Thames  
Surrey KT1 2QJ  
**T** +44 (0)20 8417 4295  
**E** j.nobbs@kingston.ac.uk

## APPLICATIONS

You can now apply for most of our postgraduate courses online. Just visit the course webpage or see [www.kingston.ac.uk/pgapply](http://www.kingston.ac.uk/pgapply) for more information, including how to apply by post or email.

## ENTRY REQUIREMENTS

Please see the relevant course webpage for specific entry requirements.

You will be expected to demonstrate the ability to study at an advanced level and will normally have relevant professional experience in a setting appropriate to the chosen specialism. Overseas applicants must also have a good level of competence in written and spoken English. All certified and non-certified learning will require verification.

## PORTFOLIO

Portfolios should be submitted digitally on a CD, opening on Microsoft XP using PowerPoint. All images should be at screen resolution – 72 dpi minimum to 150 dpi maximum image size. Please ensure that your CD is clearly labelled with your name and the course for which you have applied. CDs cannot be returned.

## PRIOR LEARNING – AP(E)L

Applicants with prior qualifications and learning may be exempt from parts of a course in accordance with the University's mechanisms and policy for the assessment of prior learning/prior experiential learning.

## INTERVIEW

Home applicants will normally be invited to attend an interview prior to selection. International applicants can arrange for an interview by email or telephone, or may be exempt from interview as long as they can demonstrate that they meet the specified entry requirements.

## INTERNATIONAL STUDENTS

Faculty staff visit international education fairs, where you can talk to them about our courses and programmes. For details of the fairs and to find out what Kingston University has to offer international students, see [www.kingston.ac.uk/international](http://www.kingston.ac.uk/international)

## STUDENTS WITH DISABILITIES

The University welcomes applications from students with disabilities and is working towards improving access, facilities and services.

If you think you may require individual support or adaptations to facilities, our Disability Advisor can give you information on what is available. Once we have received your application form with details of your disability, we may invite you to visit the University so that we can talk to you about your needs in advance.

The University Disability Statement gives detailed information of the types of support available and of the accessibility of each site. It is available in standard, large print or braille and audiotape, and from our website.

For more information or a copy of the University Disability Statement and Policy or to arrange a visit to assess the University's facilities, please see our website or contact the Disability Advisor at:

Kingston University  
Penrhyn Road  
Kingston upon Thames  
Surrey KT1 2EE  
**T** +44 (0)20 8417 4282  
**Minicom** +44 (0)20 8417 4447  
**F** +44 (0)20 8417 4443  
[www.kingston.ac.uk/disability](http://www.kingston.ac.uk/disability)

## TUITION FEES

Tuition fees for your course can be found on the course webpage. For information about payment options, please contact Applicant Services. Please check our website for the latest fee information: [www.kingston.ac.uk/pgfunding](http://www.kingston.ac.uk/pgfunding)

## DISCLAIMER

This prospectus was issued in August 2011 and is primarily intended for use by prospective students wishing to start courses in 2012. It gives an outline of the courses and services offered by Kingston University. The information was correct at the time of going to press.

The University makes every effort to ensure that the contents of and statements made in this prospectus are fair and accurate, but it cannot accept any responsibility for omissions, errors or subsequent changes that may occur.

The statements made and the information provided is a general guide, and there may be changes following publication that affect the contents. Programmes or modules may be revised, altered or withdrawn without notice, and assessment arrangements may be changed. It should be noted that information on entry requirements for courses and modules is for guidance only. The conditions attached to offers may vary from year to year and from applicant to applicant.

**The University website contains the most up-to-date information available and should be checked before applying. Every effort is made to ensure that any changes referred to above are updated on the website as soon as practicable, however the University cannot be held responsible for any delays in doing so.**

## GENERAL STUDENT REGULATIONS

Acceptance of an offer and enrolment at the University are subject to the then current General Regulations of the University; a copy of which can be seen at [www.kingston.ac.uk/policies](http://www.kingston.ac.uk/policies)

Please note that nothing within the contents of this prospectus or the University website is intended to constitute a placement offer (or form part of an offer) to any prospective student, nor should it be construed as such.

## HOW TO FIND US

For information on travelling to Kingston and the University sites, please see [www.kingston.ac.uk/directions](http://www.kingston.ac.uk/directions)

## ACKNOWLEDGEMENTS

**Designed, produced and published by:**

Communications  
Corporate Affairs  
Kingston University  
River House  
53–57 High Street  
Kingston upon Thames  
Surrey KT1 1LQ

## Printers

IOS

## Photography

With thanks to Ezzidin Alwan, Simon Armstrong, John D Moore, Guy Montagu-Pollock, Geoff Onyett and Chris Thomas

*A special thanks to all Kingston students and staff who let us take their photos and who told us all about life and study at Kingston.*

# USEFUL LINKS

## COURSES

Kingston University offers a wide range of courses across a variety of subject areas. We continually add to and update our portfolio of courses. For the latest details, including entry requirements and how to apply, visit our website: [www.kingston.ac.uk/courses](http://www.kingston.ac.uk/courses)

## VISIT US

Why not come and visit the University to discover more about us and our courses? To find out how to arrange a visit, contact your faculty. See: [www.kingston.ac.uk/faculties](http://www.kingston.ac.uk/faculties)

## VIRTUAL TOUR

If you aren't able to come and visit us in person but you'd still like to see what the University is like, you can take a virtual tour of the University campuses on our website: [www.kingston.ac.uk/tour](http://www.kingston.ac.uk/tour)

## ACCOMMODATION

To find out about all the accommodation options you'll have as a Kingston student, with advice and guidance from our specialist staff, see: [www.kingston.ac.uk/pgaccommodation](http://www.kingston.ac.uk/pgaccommodation)

## MONEY MATTERS

Funding a postgraduate course can be a big financial commitment. At Kingston we'll do everything we can to help you keep your finances in order. See: [www.kingston.ac.uk/pgfunding](http://www.kingston.ac.uk/pgfunding)

## INTERNATIONAL

For guidance and advice for students from overseas, including the opportunity to chat with virtual student advisors, watch video clips of current international students and find out about funding opportunities, see: [www.kingston.ac.uk/international](http://www.kingston.ac.uk/international)