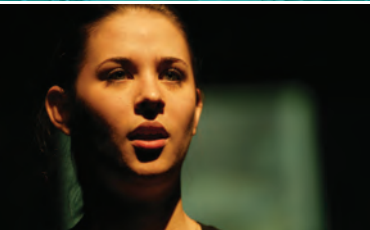


MANCHESTER
1824

The University
of Manchester

undergraduate
brochure 2012



drama

humanities

www.manchester.ac.uk/drama

the facts



- Second in the country for drama research
- Superb technical facilities in the John Thaw Studio Theatre, plus access to sound-editing and video-editing suites
- Extensive collections in drama, including book holdings, multiple play texts, CDs, audio tapes, videos and DVDs
- Interdisciplinary events hosted at the Cosmo Rodewald Concert Hall
- Social theatre work in prisons, with refugees and in mental and social health centres
- Best careers service in the UK
- 4 million books in one of the UK's best university libraries
- Guaranteed accommodation for all first-years
- The UK's largest students' union






The University	2
Drama at Manchester	4
Course details	8
Find out more	10
Contact details	13

'Manchester is a place for individuals, brilliant kids who like to do their own thing... and if you are ready it will release you to do the same...'

The Virgin Guide to British Universities



With a distinguished history of academic achievement and an ambitious agenda for the future, The University of Manchester offers you a learning experience rooted in a rich educational heritage and boosted by cutting-edge research and innovation – all at the heart of one of the world’s most vibrant cities.

the university

Part of the prestigious Russell Group of universities, Manchester has much to offer you. As well as the outstanding facilities, resources and opportunities found within an institution of this calibre, the University is highly respected amongst academic and business communities alike – a respect that is conferred upon its graduates.

Innovative

Our tradition of success in learning and research stretches back over 180 years, encompassing the birth of the modern computer, the splitting of the atom and the founding principles of present-day economics. All these and many more world-changing innovations have their roots here, at The University of Manchester.

Rated third in the UK in terms of ‘research power’ in the last Research Assessment Exercise, today we enjoy a global reputation for our pioneering research, which informs our problem-based approach to undergraduate learning.

Internationally renowned

Since 2005, the University has risen in the influential Academic Ranking of World Universities Survey conducted by Shanghai Jiao-Tong University, from 53rd to 44th in the world, and ninth in Europe – confirming us as a progressive and world-class teaching and research institution.

Our campus is home to more than 37,000 students from around 150 countries, creating a diverse and inclusive multicultural community.

Ambitious

Our mission is to become one of the top 25 universities in the world by 2015 and the preferred destination for the best teachers, researchers and students.

It’s a goal that we’re well on the way to achieving, backed by a multimillion-pound investment programme in facilities, staff and buildings. This includes a virtual learning environment that offers you flexible access to study resources 24/7, and the Alan Gilbert Learning Commons, a new £30 million resource centre for students opening in 2012.



Distinguished

More than 5,600 academic and research staff – many leaders in their fields, with international reputations – provide stimulating learning environments and excellent standards of teaching.

As a Manchester graduate, you will join a prestigious hall of fame, including 25 Nobel Prize winners among our current and former staff and students. We have more Nobel Prize winners on our current staff than any other UK university.

Sought after by employers

Employers actively target University of Manchester graduates, giving you excellent job prospects.

Our worldwide community of 240,000 graduates can be found in top positions in every imaginable field, including Sir Terry Leahy, former chief executive of Tesco; former Secretary General of Amnesty International Irene Khan; writer/performer Meera Syal and author Louis de Bernieres.

Full of opportunity

You can take advantage of countless exciting personal development opportunities at Manchester, including career development programmes run by a university careers service that has consistently been voted the best in the UK by graduate recruiters.

Choose The University of Manchester and you will join one of Britain's most forward-thinking universities, which builds on its success year on year – and invites you to do the same.

Find out more...

www.manchester.ac.uk/aboutus



drama at manchester

Manchester has a worldwide reputation for the quality of our research. We have some of the country's leading researchers and practitioners of drama, who seek to promote a research culture at both undergraduate and postgraduate levels.

The integration of research and teaching forms an important and dynamic centre to all our work. In the most recent National Research Assessment Exercise (2008), 85% of our research outputs were rated as "world-leading" or "internationally excellent". We are now officially rated the second best drama department in the country.

Our teaching and learning

It is important that you choose carefully when applying for any drama course. Some universities offer courses that are purely vocational, a training for potential actors, designers, or directors, while others offer a mix of training and academic study in different proportions. At Manchester, we have our own particular academic emphasis and you should understand what that is if you are considering applying for a drama course here.



What unites our teaching is a commitment to the social function of drama and the transformative potential of drama in people's lives, whether that is through a piece of popular entertainment, or hard-edged political theatre. We present a range of drama courses covering our main areas of interest: Performance, Applied Theatre and Screen Studies. We also run drama courses with English and Music.

Teaching is carried out via lectures, seminars, tutorials and practical group projects. You are placed in tutorial groups for first-year course units and allocated an academic advisor, who will monitor and advise you on progress through your academic career.

You take a variety of lecture-based 'study' course units on historical, contextual and theoretical themes, and practical 'project' course units, including video-making, theatre production, and play-writing. For Single Honours students, at least one-third of your course units in each year will have a practical element. Practical work is generally workshop-based, and not all projects culminate in public 'performance'. Plays are mounted in the John Thaw Studio Theatre, while Theatre in Prisons and our other applied theatre course units perform to their own special audiences and in specific sites (including museums and historic sites, as well as schools).

Although we expect all students to perform in a closed workshop environment at some stage, acting ability is not a prerequisite for study at Manchester and we do not offer actor training.

Manchester offers you...

- Established tradition at one of the first UK universities to teach drama
- £6 million investment in brand-new premises and resources
- Wide-ranging teaching covering the history, theory, criticism and practice of drama and its performance
- A unique disciplinary focus on the way in which drama functions within its cultural context



Study resources and facilities

A few years ago, Music and Drama took up residence in an impressive new building, provided by the University at a cost of more than £6 million. Facilities include:

- The John Thaw Studio Theatre, with flexible stage and seating for 150 people
- A large and beautiful concert hall, seating over 300 – this allows us to mount some innovative and exciting performances, which involve the participation of both Music and Drama students
- Workshops and rehearsal rooms, including sound- and video-editing suites with state-of-the-art technology
- Large and small screening rooms and editing facilities for film studies, lecture and seminar rooms
- Performing arts library
- Computer banks and IT resources

Links with outside organisations

The Theatre in Prison and Probation Centre (TIPP) is based in our building and works both nationally and internationally in prisons, with refugees and in mental and social health settings.

We also have close links with the neighbouring Contact Theatre and the Royal Exchange Theatre, and we co-run the Insight Film Festival, supported by the BBC. We have strong connections with the University's thriving Drama Society, which produces plays throughout the year, as well as an annual month-long drama festival every spring.

Study abroad for one semester

You have the opportunity to study abroad for one semester (in your second year of studies) at a partner university in Europe, Australia, Canada, Hong Kong, Singapore, or the USA. Ten percent of our students have opted to study abroad on this scheme in recent years.

For more information, email goabroad@manchester.ac.uk or visit the Study Abroad website:

www.manchester.ac.uk/ug/studyabroad



Your career opportunities

We are very proud of the professional profiles of our ex-students. The qualities of creative imagination and research skills that we aim to teach are valued by a diverse range of employers and our graduates have made successful careers in a wide variety of occupations. The breadth indicates our students' adaptability and their aptitude for collaborative work, effective communication and negotiation with professionals and others in the outside world.

These include:

- **Applied theatre areas** – such as work in education, museums, development, the criminal justice system and community theatre
- **Television and radio** (often following specialised BBC or ITV training courses/work experience) – production, research, scriptwriting, script editing, acting, directing, presenting and compiling programmes
- **Theatre** – acting, directing, writing, design, (usually following further postgraduate training/work experience)
- **Journalism** – writing for newspapers, media-related publishing
- **Teaching** – school, college and university (usually following postgraduate training/research degrees)
- **Community arts and arts administration** – managing arts centres and theatres, museum design and exhibition administration
- **Law and business management** (short 'conversion' courses are often available specifically for arts graduates, especially applicable for those with demonstrable skills in communication and work in the community)

You will find that many of our courses contain within them elements that involve 'transferable skills', such as teamwork, communication, presentation and research skills, which have a clear relevance for a wide range of occupations after you leave university.

One of the qualities we aim to nurture in our students is an enhanced cultural awareness. Employers are increasingly stressing their need for people who can communicate effectively, work in teams, and demonstrate a capacity to take initiative; qualities you will find encouraged in both the coursework and assessment at Manchester.

course details

Drama BA 3yrs

UCAS Code W400

Drama and Screen Studies BA 3yrs

UCAS Code WW46

Drama and English Literature BA 3yrs

UCAS Code WQ4H

Typical offer

A-level: AAB-BBB

IB: 35-32

For full entry requirements, see

www.manchester.ac.uk/ugcourses

BA (Hons) Drama

This Single Honours course is designed to give you the maximum opportunity to take advantage of the range of topics taught in drama. There are two main areas of emphasis: drama as a cultural process and artistic discourse, and drama as practice.

In your first year, you receive an invaluable foundation in the study of theatre and film. Through lectures, discussion groups, workshops and rehearsals, you are introduced to core concepts in drama. You will get an opportunity to explore the ideas raised by your own research through rehearsed presentations and small-scale performances.

In your second and third years, you are invited to create your own areas of study by choosing from the range of topics offered. You can add these options to the required core course units, which further develop your understanding of some major theories and aspects of the history of film and theatre. Some of the course units you can choose from are taught through practical work. These include, for example: devising a studio theatre production; writing a play with expert tuition from the Royal Exchange Theatre; making a video documentary; and developing theatre in prisons.

BA (Hons) Drama and Screen Studies

You should choose this Single Honours course if you wish to take advantage of the opportunities that Single Honours Drama offers, but would also like to focus more specifically on the study of film. There are two main areas of emphasis: drama as a cultural process and artistic discourse, and drama as practice.

You will naturally choose the film options offered, especially in your second and third years. These options include the study of film music, specific types of film (eg fantasy cinema and mockumentaries), or different national cinemas, including British and transnational Chinese cinemas. Like all screen studies students, you take a course unit in video-making (either in Documentary or Drama).

BA (Hons) Drama and English Literature

This challenging and highly sought after Honours degree aims to help you develop an analytical understanding of theatre and screen studies combined with the study of English literature.

The drama part of the degree encompasses a variety of course units, including Storytelling, Applied Theatre in Prisons, Directing, Screen Studies, and Writing for Performance. In addition to the course units offered, you are given the scope for independent study and original research. There are two main areas of emphasis: drama as a cultural process and artistic discourse, and drama as practice.

The English part of the course allows you to select from options including: Introduction to Literary Modernism 1890-1939; Literature in History; Cultural Theory and Modern Literature; Introduction to Old and Middle English; Introduction to Language Studies; Creative Writing; Modern Drama; Modern Poetry; Modern Novel; Early English Drama; and Shakespeare.

The choice of varied drama and English options allows you to create your own degree pathway. Your route through the course is determined by you, in consultation with your personal academic advisor.

BA (Hons) Drama and English includes a combination of compulsory and optional course units. Following the groundwork established in your first year, we encourage you to pursue your own interests through a range of optional courses.

Indicative of this emphasis upon independent study and individual development is the opportunity you have to choose your own pathway through the drama and English course units in your second and third years. Each year of your degree you can choose to have either an equal balance of units, or to major in Drama or English. You may wish to choose course units that reflect a continuing interest in performance or visual analysis; alternatively, you may choose a more diverse selection so as to widen your perspective in the field of English or drama.

Music and Drama Option

Within the MusB course (UCAS code W302 – see Music brochure), there exists the option to undertake a joint route in Music and Drama. This aims to provide an academic programme of study for those who wish to develop existing musical knowledge, performing ability and creative imagination; who wish to study theatre, drama and film through history, theory and practical performance; and who wish to explore the interrelationships between the two subjects. This last avenue is especially encouraged in second- and final-year specifications.

In the first year, you take about half of your course units in Drama and half in Music. In the second and final years, one-third of the units are drawn from Music, one-third from Drama and one-third from interdisciplinary topics, such as music theatre or music and film.




Choosing a course unit

We have some of the best-rated course units in the University, many of which have been commended as being original and innovative. We constantly update our teaching to reflect the diversity of our subject.

Some of our recent course units have included:

- Adapting Fantastic Texts to Screen
- Applied Theatre (in schools, museums, historic sites, prisons, young offender institutions, etc)
- Black on Screen
- Boal in Action
- Bollywood Cinema
- Concerning 'Camp'
- Contemporary Theatre
- Directing
- Expressionism to Epic
- Film Music
- The Musical on Stage and Screen
- Performance and War
- The Performance of Gender and Sexuality
- Storytelling
- Studio Theatre Production
- Theatres of the Middle East
- Writing for Performance
- Verdi and Shakespeare
- Video Production

You need to consider very carefully what sort of drama study will engage your interest most and will be helpful for a future career. Remember that at Manchester all degree courses are intellectually demanding and offer the kind of transferable skills preferred by employers. All of them involve textual study of the kind you have encountered on your English courses.



Our University website holds a wealth of information on the many varied aspects of student life. Below are some of the most popular topics – use the web links for full details...

find out more

Accommodation

As long as you apply by our deadline, all first-year students holding an unconditional offer are guaranteed an offer of a place in university accommodation. For international students, this promise is extended to the full duration of your studies. We are proud to offer more spaces in university-managed accommodation than practically any other UK university.

Discover our diverse range of university accommodation, bustling student areas, halls of residence visits, private accommodation options and more:

www.manchester.ac.uk/accommodation
www.manchesterstudenthomes.com

Admissions and applications

We welcome applications from people of all backgrounds, and are fully committed to equality of opportunity. All applications for full-time undergraduate courses in higher education are coordinated by the Universities and Colleges Admissions Service (UCAS). You must apply online at www.ucas.com. If you are unable to access the internet, contact the UCAS Customer Service Unit on +44 (0)871 468 0468.

Find out more about the application process, policies, procedures and support:

www.manchester.ac.uk/ug/howtoapply

Careers Service

Our award-winning Careers Service will work in partnership with you throughout your degree to improve your employability and prepare you for the competitive jobs market. It will help you find part-time jobs, volunteering and work experience opportunities.

Since Manchester is one of the most targeted universities by graduate recruiters, you will meet many employers on campus. You might also take part in the unique Manchester Leadership Programme, to help you develop skills and boost your CV.

Find out more about careers events, mentoring programmes, accredited course units and a whole range of other services:

www.manchester.ac.uk/careers
www.manchester.ac.uk/mlp

Childcare

There are two centres associated with the University for children between six months and five years of age: Dryden Street Nursery and Echoes Nursery. Find out more about funding options, private nurseries, playgroups and schools:

www.manchester.ac.uk/studentnet/crucial-guide/personal-life/student-parents/student-parents

City of Manchester

One of the great benefits of being a student at Manchester is that all the joys of Britain's number one student city are right on your doorstep. You'll be spoilt for choice for food, drink, culture, music, history, nightlife, festivals, shopping, sport and much more – with the quiet countryside of two beautiful national parks also within easy reach when you want to get away from it all. Find out what one of our current students has to say about the capital of the North West:

www.manchester.ac.uk/ug/studentlife/sociallife/manchester



Disability support/applicants with additional support needs

We welcome applications from people with additional support needs and all such applications are considered on exactly the same academic grounds as other applications. If you have additional needs arising from a medical condition, a physical or sensory disability, or a specific learning disability, you are strongly encouraged to contact the University's DSO to discuss your needs, any arrangements that may be necessary and the extent to which appropriate support is available:

www.manchester.ac.uk/dso

Information is also available from the Students' Union Welfare Officer:

www.umsu.manchester.ac.uk

Funding and finance

The University of Manchester will charge a headline fee of £9,000 per year to UK and EU undergraduates from September 2012, following changes to university tuition fees approved by Parliament in 2010. This fee will enable the University to maintain the quality of a Manchester degree, invest in the wider student experience and offer a range of bursaries and discounts for students from less well-off backgrounds.

However, more than one-third of all students who successfully apply to study here will receive bursaries of up to £3,000 per year – and many will be offered even more generous support. Students who are eligible will be able to choose how they receive this support – either as a cash bursary, or as a discount on their fees or accommodation bill.

For the most up-to-date details, including information on our proposed bursaries, scholarships and fee discounts, see our website:

www.manchester.ac.uk/studentfinance

International students

The University is a multicultural environment and home to more than 9,500 international students from around 160 countries. A range of services is available for international students, to help you both before and during your studies. This includes an airport collection service, orientation courses and specialist student advisers.

Find out more, including information specific to students from your country, such as entry requirements and useful contacts:

www.manchester.ac.uk/international

IT services

As a student at Manchester, you will have access to a huge range of up-to-date IT services, including: online and mobile learning, PC clusters with a wide range of software, extensive WiFi networks, halls of residence internet service, email and technical help and support.

www.manchester.ac.uk/its

Library

The John Rylands University Library (JRUL) is one of the best-resourced academic libraries in the UK and is widely recognised as one of the world's great research libraries, with diverse special collections and electronic resources unrivalled within UK universities.



In 2009, the Main Library underwent a large-scale refurbishment to the ground floor, improving access both to the building and to the collections and also introducing new social and learning spaces to cater for a range of learning styles.

Find out more about the information services and resources available to you:

www.manchester.ac.uk/library

Maps

Get to grips with your future home and take a closer look at our campus, the city and University accommodation by viewing our maps:

www.manchester.ac.uk/aboutus/travel/maps

Prospectus

Our 2012 undergraduate prospectus offers a comprehensive overview of The University of Manchester. You can view a copy online:

www.manchester.ac.uk/ug/courses/prospectus

Religious support

There are two chaplaincy centres for the major Christian churches. St Peter's House provides chaplains for the Anglican, Baptist, Methodist and United Reformed Churches, while the Roman Catholic Chaplaincy is at Avila House. Hillel House provides facilities for Jewish worship. There are prayer facilities on campus for Muslim students and student societies for many religions.

Sport

We have an exciting sport and fitness scene with something for everyone at every level, from complete

beginner to high performance athlete. Discover more than 40 sports clubs; a vibrant 'Campus Sport' programme, allowing you to play in friendly, recreational leagues; a huge variety of health and fitness classes; plus sport volunteering and scholarship opportunities.

Find out more about our superb sport facilities and opportunities to get active in Manchester:

www.manchester.ac.uk/sport

Student support

Whatever the issue – financial, academic, personal, or administrative – we have experienced and sympathetic people, support groups and advice centres to help you. Find out about counselling, academic advice and various other student support services:

www.manchester.ac.uk/studentnet/crucial-guide

Students' Union

The University of Manchester Students' Union (UMSU) is the largest Students' Union in Europe, offering everything from live bands to welfare advice, cheap stationery to student representation. UMSU has some of the largest and most active student societies in the country, as well as support and welfare services, student media, shops and bars and the famous Manchester Academy. Have a look at the SU website:

www.umsu.manchester.ac.uk

Video library

Watch and listen to our students and staff introducing various aspects of student life and The University of Manchester with our selection of online videos:

www.manchester.ac.uk/aboutus/video



For further information about the courses, or about qualifications, please contact:

The Admissions Co-ordinator

Drama
The University of Manchester
Martin Harris Centre for Music and Drama
Oxford Road
Manchester
M13 9PL
United Kingdom

Please go to: www.manchester.ac.uk/ug/courses/search2012/atoz
and choose your course; current contact details are given in the Fact File for the course.

Disclaimer

This brochure is prepared well in advance of the academic year to which it relates. Consequently, details of courses may vary with staff changes. The University therefore reserves the right to make such alterations to courses as are found to be necessary. If the University makes an offer of a place, it is essential that you are aware of the current terms on which the offer is based. If you are in any doubt, please feel free to ask for confirmation of the precise position for the year in question, before you accept the offer.

Drama
The University of Manchester
Martin Harris Centre for Music and Drama
Oxford Road
Manchester
M13 9PL
United Kingdom

www.manchester.ac.uk/drama

Royal Charter Number RC000797
J3230 05.11

