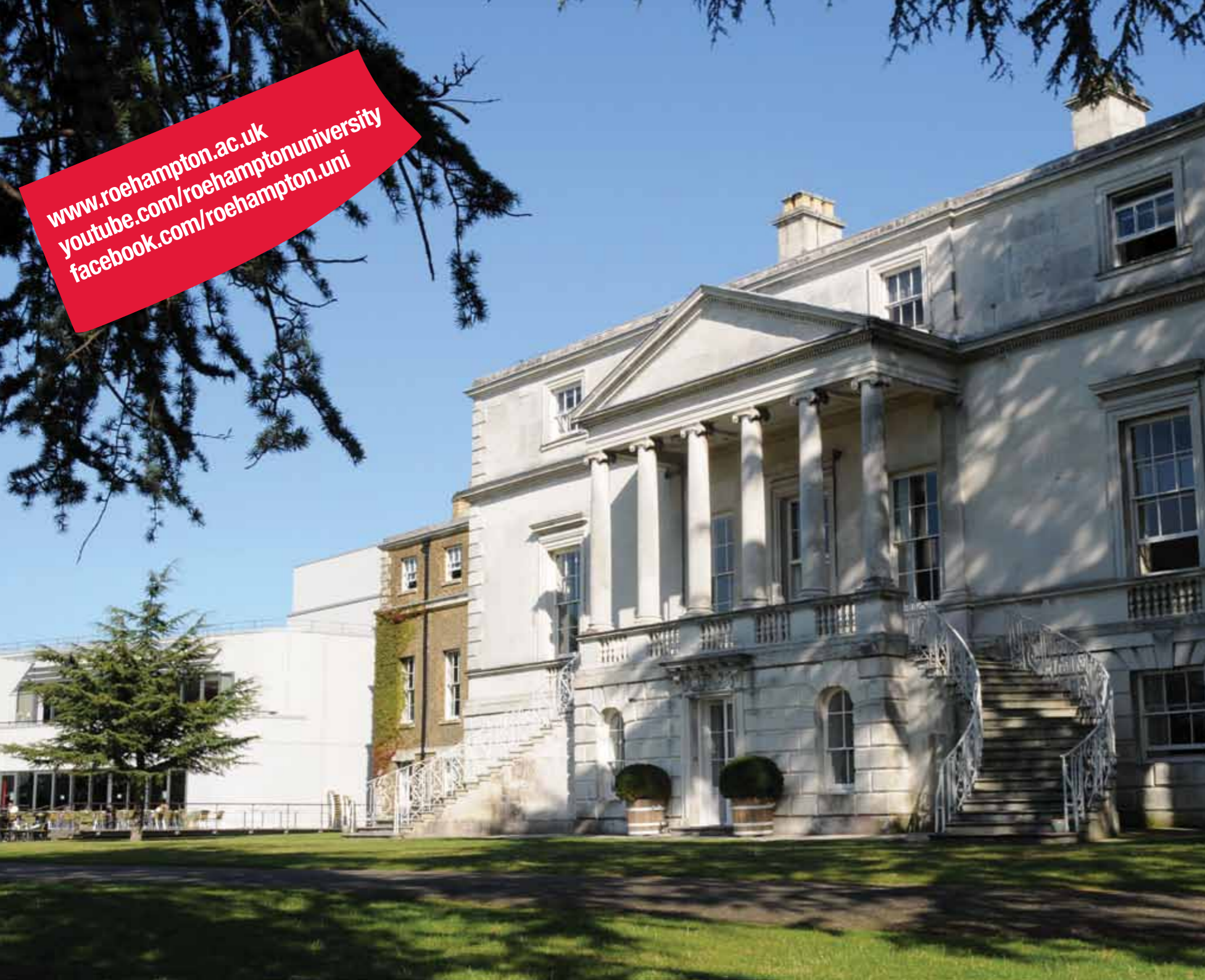




Picture yourself here...

UNDERGRADUATE
GUIDE 2012/13



www.roehampton.ac.uk
[youtube.com/roehamptonuniversity](https://www.youtube.com/roehamptonuniversity)
[facebook.com/roehampton.uni](https://www.facebook.com/roehampton.uni)

Key facts about Roehampton

- Number one university in London for quality lectures, financial support, students' union (*i-graduate survey 2010*)
- Top post-92 university in London for employment with over 92% in employment or higher study (*DLHE report for 2010 graduates*)
- First among London universities for the environment on and around campus (*Times Higher Education 2010 Student Experience Survey*)
- Number one university in the UK for research in both Dance and Biological Anthropology (*RAE 2008*)
- 78% of research of international standing and 33% internationally excellent or world class (*RAE 2008*)
- 9,000 students (73% undergraduate, 27% postgraduate)
- Over 130 nationalities
- Stunning 54-acre campus beside Richmond Park, London
- A generous scholarship scheme for academic excellence and sporting excellence



W e l c o m e

Thank you for taking the time to enquire about the University of Roehampton, I appreciate that choosing the right university is a very important decision to make and hope this guide provides you with insight into the first-rate education Roehampton has to offer.

With high-quality facilities and teaching by experts who are leaders in their fields, a Roehampton degree is specifically designed to help you reach your potential and equip you with the necessary skills to thrive in the job market.

Roehampton provides the only traditional campus experience for students in London – one of the most energetic and cosmopolitan cities in the world. With extensive grounds and a rich heritage dating back to the 1800s, the University of Roehampton has so much to offer. I hope you will come and see for yourself.

Paul O'Prey

Professor Paul O'Prey,
Vice-Chancellor



OPEN DAYS

SAT 21 JAN 2012
SAT 11 FEB 2012
WED 4 JUL 2012

APPLICANT ORIENTATION DAYS

If we make you an offer, look out for your invitation to our Orientation Day in April – your first step to Roehampton life!

CONTENTS

Course list	8
What happens to your application	11
Key dates and checklist	11
The history of Roehampton	12
Choose Roehampton	14
The Roehampton graduate – what you will become.....	17
Fees and funding.....	18
Student life	20
Accommodation	22
The Colleges.....	24
Sport Roehampton / Students' Union.....	26
International students at Roehampton.....	28
Academic Departments.....	30
Getting here.....	73



36

Department of Dance



32

Business School



40

Department of Drama,
Theatre and Performance



44

Department of Education



48

Department of English
and Creative Writing



52

Department of Humanities



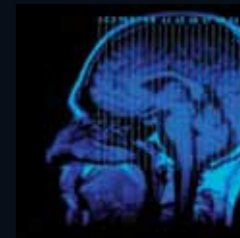
56

Department of Life
Sciences



60

Department of Media,
Culture and Language



64

Department of Psychology



68

Department of Social
Sciences



Find us on Facebook Search for "roehampton university" and become a fan or join our group

CHOOSE YOUR COURSE

COURSE	UCAS TARIFFS	FEE (£)	COURSE	UCAS TARIFFS	FEE
ANTHROPOLOGY	320	7,900	INTEGRATIVE COUNSELLING	Interview	7,900
BIOLOGICAL ANTHROPOLOGY	320	7,900	INTERNATIONAL BUSINESS	320	8,250
BIOLOGICAL SCIENCES	320	8,250	JOURNALISM	300	7,900
BIOMEDICAL SCIENCES	320	8,250	MARKETING	320	8,250
BUSINESS ECONOMICS	320	8,250	MARKETING & MULTIMEDIA	320	7,900
BUSINESS ENTREPRENEURSHIP	320	8,250	MEDIA & CULTURE	300	7,900
BUSINESS INFORMATION SYSTEMS	320	7,900	MINISTERIAL THEOLOGY (FOUNDATION)*		7,500
BUSINESS, INTERNATIONAL see International Business			MODERN LANGUAGES (FRENCH, EFL, SPANISH)	300	7,900
BUSINESS MANAGEMENT	320	8,250	MODERN LANGUAGES – TRANSLATION	300	7,900
BUSINESS MANAGEMENT AND ACCOUNTING	320	8,250	NUTRITION & HEALTH	320	7,900
BUSINESS MANAGEMENT AND DIGITAL MEDIA	320	8,250	PHILOSOPHY	300	7,900
BUSINESS MANAGEMENT AND RETAIL MARKETING	320	8,250	PHOTOGRAPHY	300	7,900
CLASSICAL CIVILISATION	300	7,900	PRIMARY EDUCATION	320	8,250
COUNSELLING, INTEGRATIVE see Integrative Counselling			PSYCHOLOGY	300	7,900
COUNSELLING PSYCHOLOGY	300	7,900	SOCIAL ANTHROPOLOGY	320	7,900
CREATIVE WRITING	300	7,900	SOCIOLOGY	280	7,900
CRIMINOLOGY	280	7,900	SPANISH	300	7,900
DANCE STUDIES	340	8,250	SPORT & EXERCISE SCIENCES	300	8,250
DRAMA, THEATRE & PERFORMANCE STUDIES	300	7,900	SPORT PSYCHOLOGY	300	7,900
EARLY CHILDHOOD STUDIES	320	7,900	SPORTS COACHING PRACTICE (FOUNDATION)*		7,500
EDUCATION	320	7,900	SUPPORTING LEARNING & TEACHING (FOUNDATION)*		7,500
ENGLISH LANGUAGE & LINGUISTICS	300	7,900	TEACHING see Primary Education		
ENGLISH LITERATURE	300	7,900	TESOL (TEACHING ENGLISH TO SPEAKERS OF OTHER LANGUAGES)	300	7,900
FILM	300	8,250	THEOLOGY & RELIGIOUS STUDIES	300	7,900
HISTORY	300	7,900	WEB AND CREATIVE TECHNOLOGIES	320	7,900
HUMAN RESOURCE MANAGEMENT	320	8,250	ZOOLOGY	320	8,250
INFORMATION MANAGEMENT	320	7,900			

*There are no formal tariffs for Foundation degrees.

Some of our programmes are available as combined honours. See the website for details.



See us on YouTube
www.youtube.com/roehamptonuniversity

Applying to University

WHAT HAPPENS TO YOUR APPLICATION

You can apply for up to five courses, which you must do through UCAS. Once we receive your application from UCAS, if you meet our entry criteria for the course, we will make you an offer.

Once you have heard back from all the institutions you have applied to you need to make a decision about which application will be your 'firm' choice – first choice – and your 'insurance choice' – second choice.

During the time it takes for you to make your decision we will contact you by email, phone and occasionally by post with more information about the course.

The first UCAS deadline is 15 January. You may submit late applications up until 30 June; however please be aware that if courses become full we may not be able to make offers on late applications. Any application that we receive via UCAS after 30 June will go directly into Clearing.

KEY DATES

November 2011: Find out what student finance you can get by using the student finance calculator at www.direct.gov.uk/studentfinancecalculatorApply

January 2012: Apply online in for student finance: www.direct.gov.uk/studentfinance. You should apply before May 31.

January 14: Deadline for applications through UCAS

January 15–June 30, 2012: Late applications through UCAS

April: Apply for your place in our halls of residence if you have chosen Roehampton as your firm choice. You can also attend one of our applicant Orientation Days just before Easter.

May: Take a look through our Orientation web pages and start planning your new life at Roehampton!

August 16: A level results out – good luck!

Choose Roehampton

The University of Roehampton has been providing education through its colleges for over 170 years. It has a rich educational history, a traditional campus experience, high quality teaching and research, a strong focus on students and a fair and transparent fee structure.

A traditional campus University

Roehampton is the only traditional campus university in London, located in the south-west of the city about 30 minutes from the West-End.

Its campus has many listed buildings and gardens dating back to the 18th century, enhanced by contemporary buildings and facilities, many of which were completed over the last decade. Roehampton is a collegiate university with four colleges: Digby Stuart, Froebel, Southlands and Whitelands. The colleges play a key role in developing the University's community and ethos, as well as in the governance of the University.

Strong values from a rich history

Like most universities, Roehampton is changing as we manage the transition to the new demand-led funding regime. At the same time, we remain loyal to the values and traditions that form the core of our strength as an institution and which to a large extent draw on our college foundations. These include a fundamental belief in the power of education to transform lives and communities, a commitment to encouraging the integrity and potential of individuals, and a passion for the highest quality of education and scholarship.



Whitelands College founded as the flagship teacher training college for the Church of England, it was one of the first colleges of higher education in the UK to admit women.

1872

Digby Stuart College established by the Society of the Sacred Heart as a teacher training college for Roman Catholic women.

1892

The four Colleges join to form the **Roehampton Institute of Higher Education** and added a wide variety of degree programmes in the arts, social sciences and sciences.

1984

Roehampton and the University of Surrey become **federated partners**.

2004

1841

Southlands College founded by Methodists as a training college for women teachers.

1874

Froebel College established to further the values of Friedrich Froebel, the German educationalist who pioneered early years' education.

1975

The Institute becomes a constituent college of the **University of Surrey**.

2000

Roehampton University becomes an **independent university**.

Choose Roehampton

A HIGH QUALITY EDUCATION

We believe that any student with talent and academic ability is able to benefit from studying at Roehampton, regardless of his or her background. Our outstanding academic staff ensure that you benefit from the very best in teaching and learning, and gain a qualification from an institution with an enviable record in graduate employment.

Following the government's review of university funding, Roehampton has set a fair fees policy, with 95% of each student's fee spent directly towards their education, so they can be sure they're getting the best out of their chosen course.

The Student Affairs department has a strong emphasis on employability advice with a well-developed range of welfare support services. The financial support service, Money Doctors, was conceived and piloted at the University of Roehampton and now operates in 66 universities in the UK, encouraging students to take management of their finances.

A REAL UNIVERSITY EXPERIENCE

The University of Roehampton has its roots in the traditions of its four constituent colleges – Digby Stuart, Froebel, Southlands and Whitelands – which were all formed in the 19th century.

Studying at a campus university gives students a sense of community, and at Roehampton you are not only part of the University, but will also have an instant identity within the smaller world of your college. The four colleges serve as the focal points for the University's vibrant social scene and there are healthy intercollegiate rivalries in sport and other traditional celebrations. Accommodation is on campus with facilities and support services also on your doorstep.

STUDENT PARTNERSHIP

The University is building an innovative Student Partnership aimed at encouraging students to take a greater share of responsibility for the success of their university. The Student Senate is chaired by the Vice-Chancellor and reports directly to Senate and Council. Students are represented on most committees of Council and Senate and Student Senate has a budget of £50,000 for students to invest directly in areas they consider important.





Choose
Roehampton

Top new London university
for graduate employment

[www.roehampton.ac.uk/
employability](http://www.roehampton.ac.uk/employability)

The Roehampton graduate

We believe the Roehampton experience is much more than your degree; it's about the development of you as a person. Employers want a complete package of qualification, experience and life skills. So we understand it's about career opportunities and finding internships or work placements.

It's about studying hard, but also developing leadership skills by starting a new society or captaining a sports club. It's about enhancing your communication skills by volunteering in the community, mentoring local kids or networking with people you meet. Together, Roehampton and you will have the opportunity to build a complete package of qualification and experience to help you land that job when you graduate.

The Employability and Entrepreneurship team at Roehampton help and support all students on their journey into employment. They provide professional and impartial information, advice and guidance on all employability matters, including helping you to find a job. All Roehampton students are able to consult with the team during their studies and at any time after graduation.

Services:

- Employability Advisors provide guidance and information on all employability queries, offering support in considering career options, searching for and application of jobs, volunteering, self-employment, and work experience options.
- Workshops are run throughout the year, which focus on developing your employability skills, from writing a CV to applying for a graduate job.
- JobShop – register with the online vacancy site to find opportunities for part-time local work, volunteering and full-time employment and graduate jobs.
- E-guidance – ask a question or have your CV checked.
- Drop-in service.
- Lots of online resources to help you develop your employability skills.



Choose Roehampton

Roehampton has set fees at a fair level that covers the cost of your degree, and ensures sustainability of the University's state-of-the-art facilities and teaching reputation. **About 95% of the tuition fee collected will be spent directly on your education – this is one of the highest proportions in the country.**

Under the new regime UK/EU students do not pay tuition fees upfront; you pay back once you are earning.

**Tweet us on Twitter!
@RoehamptonUni**

Fees and Funding

TUITION FEES UK/EU

UK/EU tuition fees: £7,500 to £8,250 a year

No fees upfront, easy to manage

Tuition fee loans are available from the government for any student who lives in England who secures a place in higher education studying for their first degree or other higher education course.

WHEN DO I REPAY THE TUITION FEE LOAN?

You start to repay the tuition fee loan only when you are working and earning more than £21,000 a year. You repay 9% of your income above £21,000. The table below shows how much you would pay back per year/month/week based on a range of salaries.

Salary (£)	21000	22000	25000	30000	35000	40000
annual repayment	0	90	360	810	1260	1710
monthly repayment	0	7.50	30	67.50	105	142.50
weekly repayment	0	1.70	7	15.60	24.20	33

Means tested grants and maintenance loans are also available. Please see www.direct.gov.uk for full details.

FULL-TIME INTERNATIONAL STUDENTS

Tuition fees: £10,400 year

International students are also eligible to apply for a range of competitive merit-based and sports scholarships of up to £2,000 per year. Please see our website for full details and how to apply.

NEW!

Vice-Chancellor's Scholarship Scheme

UK/EU Students

Students who achieve a high score of UCAS tariff points will receive a scholarship from the University. If you achieve 340 points or more you will receive a scholarship of £1,500 per year. Students who achieve 480 tariff points or more will receive a scholarship of £2,000 for each year of your study. In both cases the scholarships will be applied as a reduction in tuition fee and applied automatically for a maximum period of three years.

National Scholarship Programme

UK Students

The University is participating in the National Scholarship Programme. At Roehampton the scholarship is open to students who are in receipt of a full maintenance grant. 75 students who achieve the best tariff scores at their respective year of entry will receive awards of £3,000 in year 1 and £1,500 in years 2 and 3. The awards will be applied in two ways; as cash awards of £300 in years 1 and 2 and £400 in year 3 with the remainder of the award made in a discount to the tuition fee.

Students who qualify for the National Scholarship programme award will not be eligible for the Vice-Chancellor's Scholarship.

Student life

The University of Roehampton provides an outstanding and welcoming student experience on a beautiful traditional campus with several listed buildings and woodland walks. We are close to Richmond Park and just 20 minutes by train from central London.

Roehampton offers a distinctive collegiate experience with an active social life, 1,500 residential places and a strong emphasis on building community, celebrating our traditions and encouraging shared values and social responsibility.



www.roehampton.ac.uk/sport-roehampton
www.roehamptonstudent.com



Student life

Accommodation

Roehampton is London's only campus-based university, which means our residences, teaching rooms and facilities are located on our beautiful parkland campus. We also help students to find privately rented accommodation off campus.

On campus

The majority of student residences are made available to new undergraduates and international students. All rooms have internet access and many are en-suite. The cost includes utilities bills and contents insurance. All international students will be guaranteed on-campus accommodation as will UK students who choose Roehampton as their firm choice and satisfy the eligibility criteria. There are hall reps and resident wardens to support you and security are on hand 24 hours a day, 7 days a week.

The application process for new students for September 2012 intake is April 2012. Come to one of our Open Days, held throughout the year, to take tours of the campus and view the rooms. Alternatively you can see pictures and 360° tours on our accommodation pages online: www.roehampton.ac.uk/accommodation.

Off campus

Living in or near Roehampton you can benefit from all that London has to offer, while avoiding the high costs of living in the centre of the city. If you are interested in living off campus, there is a wide variety of accommodation suitable for students available to rent in Roehampton and the surrounding area. The University has teamed up with the student accommodation company Studentpad to provide an online search facility for private accommodation available to rent in the local area.

Our off-campus officer can support you in finding accommodation or with any problems when you move in. You will also find a glossary of terms linked to renting property and a description of the types of accommodation providers on our online accommodation pages.

Visit our student residences at a Roehampton Open Day

Student life

The Colleges

DIGBY STUART COLLEGE

Digby Stuart is a Roman Catholic foundation, first established in 1874 as a women's teacher training college by the Society of the Sacred Heart, an order of French religious women who settled at Roehampton in 1850 having first arrived in England in 1846.

Digby Stuart is home to the Departments of Drama, Theatre and Performance, English and Creative Writing, Humanities, and Social Sciences.

FROEBEL COLLEGE

Froebel College was founded in 1892, by a group committed to the then radical philosophies of Friedrich Froebel who was probably the most influential education-
alist of the 19th century. He argued that the most important part of education was the pre-school period.

The College is based within and around Grove House. The house dates back to 1792 and was designed by architect James Wyatt for Sir Joshua Vanneck.

The college houses the Departments of Dance and Education although residential students who live at Froebel can be members of any academic department.

SOUTHLANDS COLLEGE

Southlands has a rich history, founded in 1872 by the Methodist Church and, for many years, was a centre for training teachers in the Methodist tradition.

Southlands College forms a large quadrangle on the north end of the University campus. It is a modern building which houses both teaching spaces and en-suite accommodation for nearly 300 students. The college houses the University's Business School and the Department of Media, Culture and Language, but the residential students here can be members of any academic department.

WHITELANDS COLLEGE

Whitelands College is one of the oldest higher education institutions in England. The Church of England's National Society founded the college in 1841 as a teacher training college for women. It took its name from Whitelands House, a Georgian building in the King's Road, Chelsea, previously used as a school. Whitelands is home to the Departments of Life Sciences and Psychology and offers state-of-the-art lecture spaces, seminar rooms and laboratories, social facilities and new self-catering en-suite study bedrooms for resident students.





SPORT ROEHAMPTON

Sport Roehampton provides opportunities for everyone from beginners to elite performers with the on-campus high-tech gym, sports hall, studio, outdoor courts, and clubs ranging from yoga to squash, and from martial arts to table tennis.

In 2011 Roehampton's Men's Tennis was the British University and Colleges Sport (BUCS) UK Sports Team of the Year.

STUDENTS' UNION (RSU)

Roehampton Students' Union provides a range of clubs and societies, a strong social and events programme and has an effective campaigns and awareness raising profile.

For the latest news, videos and photos and to listen to their radio station check out the RSU website: www.roehamptonstudent.com

SUPPORTING YOU

Going to university presents many exciting opportunities and occasional challenges.

We pride ourselves on the type of pastoral help and academic guidance that is on offer to all students throughout their study with us. We offer a broad range of free services - such as a disabilities support, dyslexia support, student counselling, a chaplaincy service and an on-site medical centre - details about which can be accessed through our centralised on-campus Information Centre. Those who have particular requirements are contacted early in the academic year and offered extra guidance and support through their study.

EXPLORE THE LOCAL AREA

The areas close to Roehampton provide a wide range of social and cultural experiences. Putney, Wimbledon, Kingston, Richmond and Hammersmith are all a short bus ride away.

There's plenty of entertainment on campus, with regular club nights in the Students' Union, and many societies to join and sports to take part in. If you want to explore central London, the West End is just 30 minutes away.

STUDY ABROAD

The University of Roehampton has partnerships with around 50 universities overseas, allowing students to study in Europe, Australia, the US or Latin America for a semester during their second year.

Students who have taken part in an exchange say it was one of the best parts of their degree and one of the most rewarding things they have ever done. It also looks great on your CV and shows employers that you are ambitious, adventurous and can adapt to new situations.

Immerse yourself in a different culture while studying.

Boost your career prospects and self-confidence by facing new challenges.

Build an international network of friends.

Expand your horizons with a life-changing experience.



International students at Roehampton

From its warm welcome to its quality teaching staff, the University of Roehampton has been acknowledged for its first-class experience, having been ranked highly in the internationally recognised i-graduate survey of international students.

In an era of globalisation, studying in a community that consists of over 130 different nationalities will prepare you to do business with people from around the world. And because our students are taught directly by academics with national and international reputations for their research, you learn in an environment that is rich in creativity and new ideas.

Roehampton is a small, friendly, collegiate community providing the perfect setting for your transition to London life. You will live, learn and socialise on a beautiful and historic campus in south-west London, with a range of excellent facilities on and off campus, with world-class museums, libraries and galleries never far away.

For more information, visit our International web pages

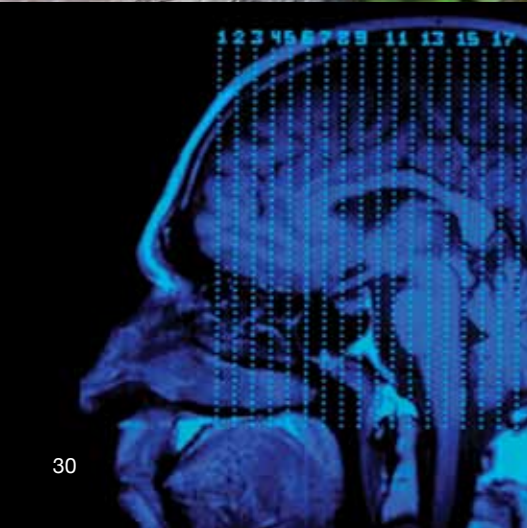
- Find out when Roehampton staff will be in your country, and if your qualifications meet our entry requirements.
- Watch videos of our international students talking about Roehampton.

London

One of the world's greatest knowledge capitals and hub of the creative industries, London boasts a wealth of internationally renowned facilities such as libraries and museums available to students. London is also an international centre for film, music, sport, nightlife, theatre, fashion and art. There really is something for everyone and many places in London even cater to students on a tight budget!

London is also the jumping off point for many European adventures. You can take the Eurostar to Paris for a weekend or hop on to any of the budget airlines operating out of London's airports and go almost anywhere in Europe.





Academic Departments



University of Roehampton

BUSINESS SCHOOL

The Business School offers a range of high-quality courses in Business, Accounting, Economics, Entrepreneurship, Human Resources, Marketing and Digital Media with a strong focus on globalisation and international business. Our stunning location in south-west London allows students to engage with London's world-renowned business and commerce and not-for-profit and voluntary sectors as well as the capital's rich cultural and historical heritage.

Our stunning location in south-west London allows students to engage with the city's world-renowned business commerce and not-for-profit and voluntary sectors as well as the capital's rich cultural heritage.

Students benefit from the real-world experience of our staff, who are involved in research and applied consultancy nationally and internationally. Our strategic partnerships with professional bodies aim to provide every Business School graduate with a route to chartered professional status in addition to their degree. Graduates are offered routes to chartered professional status with the Chartered Management Institute (CMI), the Chartered Institute of Marketing (CIM), The Chartered Institute of Management Accountants (CIMA) and the BCS, Institute for IT professionals.

The strong links we have with employers and industry, from companies such as Dell, Fosters, Haymarket, Microsoft, Santander and Waitrose as well as professional firms such as Deloitte's, Harvey Nash and Linklaters have led to industry visits, live consultancy projects and guest speakers lecturing on campus.



University of Roehampton

BUSINESS SCHOOL

Business Information Systems 320 points £7,900pa

This programme focuses on the practical aspects of designing, building and managing database-driven information systems.

Business Management (BM) 320 points £8,250pa

Business Economics 320 points £8,250pa

Business Entrepreneurship 320 points £8,250pa

BM and Accounting 320 points £8,250pa

BM and Digital Media 320 points £8,250pa

BM and Retail Marketing 320 points £8,250pa

Human Resource Management 320 points £8,250pa

Studying on a business programme at Roehampton gives students an edge in starting a career in a competitive job market. Companies are eager to recruit individuals who understand business and the wider global business environment. In your first year, you follow a common programme of study that includes Business Skills, People and Organisations, Marketing and Enterprise, Quantitative and Accounting Methods for Business, Business Economics and Business Law. You then specialise in your second and third years.

Information Management 320 points £7,900pa

The programme will provide you with an understanding of how IT works in business, and how to use IT strategically to gain a competitive advantage.

International Business 320 points £8,250pa

We specialise in preparing young people for a career in international business. Students can take a semester at one of our partner institutions in the US, Australia, France, Spain or the Netherlands.

Marketing 320 points £8,250pa

Our marketing programmes are fully accredited by the prestigious Chartered Institute of Marketing (CIM), making them among the best in the UK. The primacy of the customer, the rise of global brands and interactive marketing are key themes of modules such as International Marketing and Applied Marketing Communications.

Marketing and Multimedia 320 points £7,900pa

This programme is one of only a few degrees in marketing and multimedia in the UK. Demand for graduates is high - it is estimated there are 300 digital design agencies in London.

Web and Creative Technologies 320 points £7,900pa

You will develop efficient, professional websites and how to design and build multimedia applications pulsing with sound, light and animation. You can choose to develop your programming skills or follow a more design orientated approach.

We develop talented individuals capable of helping to build and lead ethical and sustainable organisations.

Graduates are offered routes to chartered professional status

Department of
DANCE

Roehampton Dance is one of the world's largest and most vibrant university dance departments with a community of staff and students who have a passion for dance. International dance academics, professionals and students come to Roehampton for the courses and reputation for research excellence. Roehampton was rated number one in the UK for dance in the 2008 Research Assessment Exercise to measure quality of research in higher education institutions.

The Department is renowned for cutting-edge choreography and performance; that reputation is earned by the quality of teaching and the world-leading Centre for Dance Research. As a result, the student experience here is exceptional as are the career prospects for graduates. Library, studio facilities and the Michaelis Dance Theatre are well-equipped to support your studies, and the proximity to London's dance organisations and venues makes Roehampton one of the world's top destinations for study in dance.

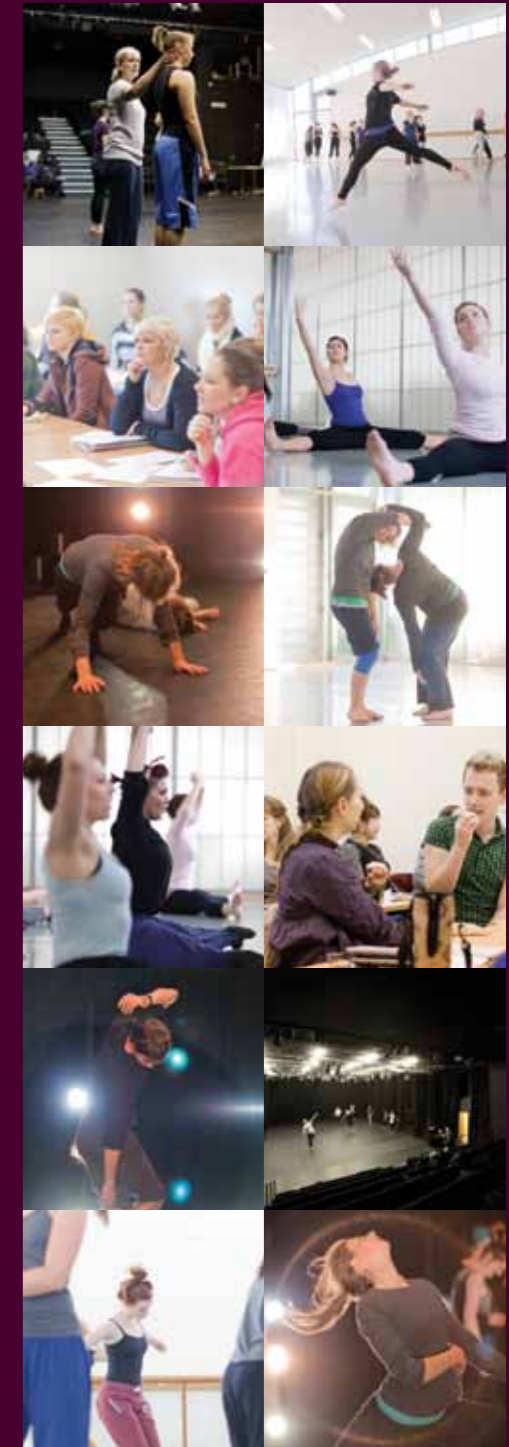
Student views:

“ There is definitely something special about Roehampton.... As soon as I came here I felt I fitted in.”

— Abi Banjoko, third-year

“ I want to choreograph, I want to perform, I want to be involved in organising things. And I feel I have been set up and now have the knowledge to delve into every different area I want to.”

— Tom Bowes, third-year



Photos courtesy of: Simon Ellis, Alison Hartley, Francis Western-Smith and Benedict Johnson

Department of
DANCE

Dance Studies

340 points £8,250pa

This internationally renowned programme focuses on dance art in 21st-century Britain from diverse multicultural and artistic contexts and allows you to explore your enthusiasm for dance through a mixture of practice and theory. Strong links with the profession are supported by staff members' own creative work and choreographic research fellowships.

KEY POINTS

- Dance research at Roehampton was rated number one in the UK by the latest Research Assessment Exercise.
- There is an extensive programme of in-house performances and dance events starring leading companies and major dance personalities.
- There is an excellent theatre, four additional studios, recording facilities and one of the UK's finest dance libraries.
- Members of the programme team act as consultants for television and radio, and have strong links with ballet and contemporary dance companies.
- Eligible students may benefit from spending one semester abroad, studying at an associated overseas university.
- Roehampton is home to the renowned Centre for Dance Research.



“ The curriculum is all-encompassing and, especially in first year, you get a taste of everything. In the second and third years that’s when you really get to hone in... you can tailor your course to how you want it to be.”

— Vicky Frayard, third-year



Department of

DRAMA, THEATRE AND PERFORMANCE

We have one of the largest academic teams in the UK, with international reputations as performance makers, writers, visual artists, curators, critics and theoreticians. Our interests range across contemporary, experimental and early modern theatre, applied theatre, performance art, sound art, creative writing, and performance as social action.

In the most recent (2008) UK universities Research Assessment Exercise, over 60% of Drama staff research was rated world-leading or internationally significant. The Department as a whole was given the highest possible rating, which is indicative of international excellence.

Staff and students work closely together on courses that combine the best of practice-led and theoretical approaches to the subject. Here you can develop the knowledge, the confidence and the skills to prepare you for all sorts of work and life opportunities.

Some of the world's leading performance-makers and academics are regular participants at events organised by the department's Centre for Performance & Creative Exchange.

Department of

DRAMA, THEATRE AND PERFORMANCE

Drama, Theatre and Performance Studies

300 points £7,900pa

The programme actively encourages intellectual curiosity and creativity, which helps you to articulate your ideas in writing, speech and performance. You will critically analyse plays, performances and audiences; build confidence and presentation skills; and develop your understanding of specific performance activities.

KEY POINTS

- The programme is designed to enable you to gain maximum benefit from the University's proximity to the theatres, museums and arts archive resources in London. Roehampton is close to many world-class facilities, including: West End theatres, the National Theatre and the Globe Theatre.
- The University has five flexible studio spaces and extensive library and technical facilities.
- Staff on the programme were judged as conducting research that is "world-leading" and "internationally excellent" in the most recent national Research Assessment Exercise.
- Undergraduate events that take place each year include a Site Specific performance project working with guest artists Forster and Heighes and an autumn festival of third-year production work.

Student views:

“Drama has given me a great opportunity to do a mix of practical and theory while adapting my playwriting.”

— Nikita Folly, third-year

“The programme at Roehampton is intellectually challenging and it really makes you question how you perceive drama. I like the fact that so many avenues are opened up and you are made aware of new areas and conventions of drama.”

— Rick Woska, first-year





Department of **EDUCATION**

The Department of Education has a long history at Roehampton with the original mission of the four colleges within the University being concerned with the training of teachers. Today the Department has an international reputation for high-quality teaching and research and it is positioned as one of the principal providers of Initial Teacher Education nationally and houses highly successful provision in the areas of Education Studies and Early Childhood Studies.

The Department offers a challenging, supportive and positive learning environment and as a result, the student experience is exceptional as are the career prospects for graduates. Our facilities are bespoke and our events provide additional opportunities for staff, students and partners to participate in stimulating lectures, workshops and conferences to extend their knowledge and understanding of education issues and to participate in educational debate.

Based at Froebel College at the University of Roehampton, the Department is a large and vibrant 'community of practice' with staff and students working with partnership colleagues (from schools, colleges and local authorities) to improve education provision.



Department of

EDUCATION

Early Childhood Studies 320 points £7,900pa

Discover how children develop, learn and think from birth to the age of six in this programme designed to meet the increasing demand for early years specialists. The programme also provides those already working in this field with the opportunity to enhance their practical work with a better understanding of early childhood theory.

Education 320 points £7,900pa

Everyone is entitled to an education, but what should be taught and by whom? The programme explores this fascinating subject through aspects such as the impact of gender on education, how to support vulnerable children, education both in and outside of the classroom, and inclusive and special education. During the programme you are encouraged to build a portfolio not only of academic but also of personal and vocational skills.

Primary Education 320 points £7,900pa

This nationally renowned programme is a direct route to becoming a primary teacher, as graduates are recommended for Qualified Teacher Status (QTS). The programme reflects the needs of a primary teacher and the nature of the primary curriculum. It promotes the development of subject knowledge and teaching skills, a thorough understanding of children and the curriculum, and the ability to reflect on your experiences.

Students often find their first jobs through their school based training, as headteachers are impressed with the high calibre of Roehampton students and are eager to offer them a position in their schools.

Student views:

“ Studying at Roehampton was a brilliant experience, both challenging and rewarding. I feel the benefits now as a teacher, of the time spent in different schools. It enabled me to understand how they work and the ethos which defines each particular school. ”

— Malcolm Pearse, BA Primary Education graduate

“ School experience is hard work but great fun. I am glad that we have at least three years to develop our teaching skills, otherwise it would be tough. ”

— Maggie MacDonald, BA Primary Education (ICT) graduate



Sports Coaching Practice (FdA) n/a* £7,500

This Foundation Degree (FdA) is for coaching practitioners who are keen to develop their own practice and career progression. This is a work-based programme: students will need to be in either a paid or voluntary coaching role and will need to be supported by their employer.

Supporting Learning and Teaching (FdA) n/a* £7,500

This is a work-based programme particularly suitable for teaching assistants who require a continuing professional development opportunity linked to a recognised undergraduate qualification. For those who do not already hold higher level teaching assistant (HLTA) status, this can be integrated into the first year of foundation degree study. You have the opportunity to develop basic research skills alongside developing an area of expertise of your own choosing that has direct relevance to your role in the workplace.

**There are no formal tariffs for Foundation Degrees*

KEY POINTS

- Roehampton is one of the largest providers of initial teacher education in the UK and recent Ofsted inspections of primary provision have been extremely positive, with management and quality assurance rated as outstanding.
- You will benefit from extensive school-based experience – the University has partnerships with over 500 schools.
- In the most recent survey, 96% of our students had gained teaching employment within six months of graduating.
- Roehampton is internationally renowned for its work in education and early childhood studies.
- Find out more about the Roehampton experience with our video interviews: www.roehampton.ac.uk/education



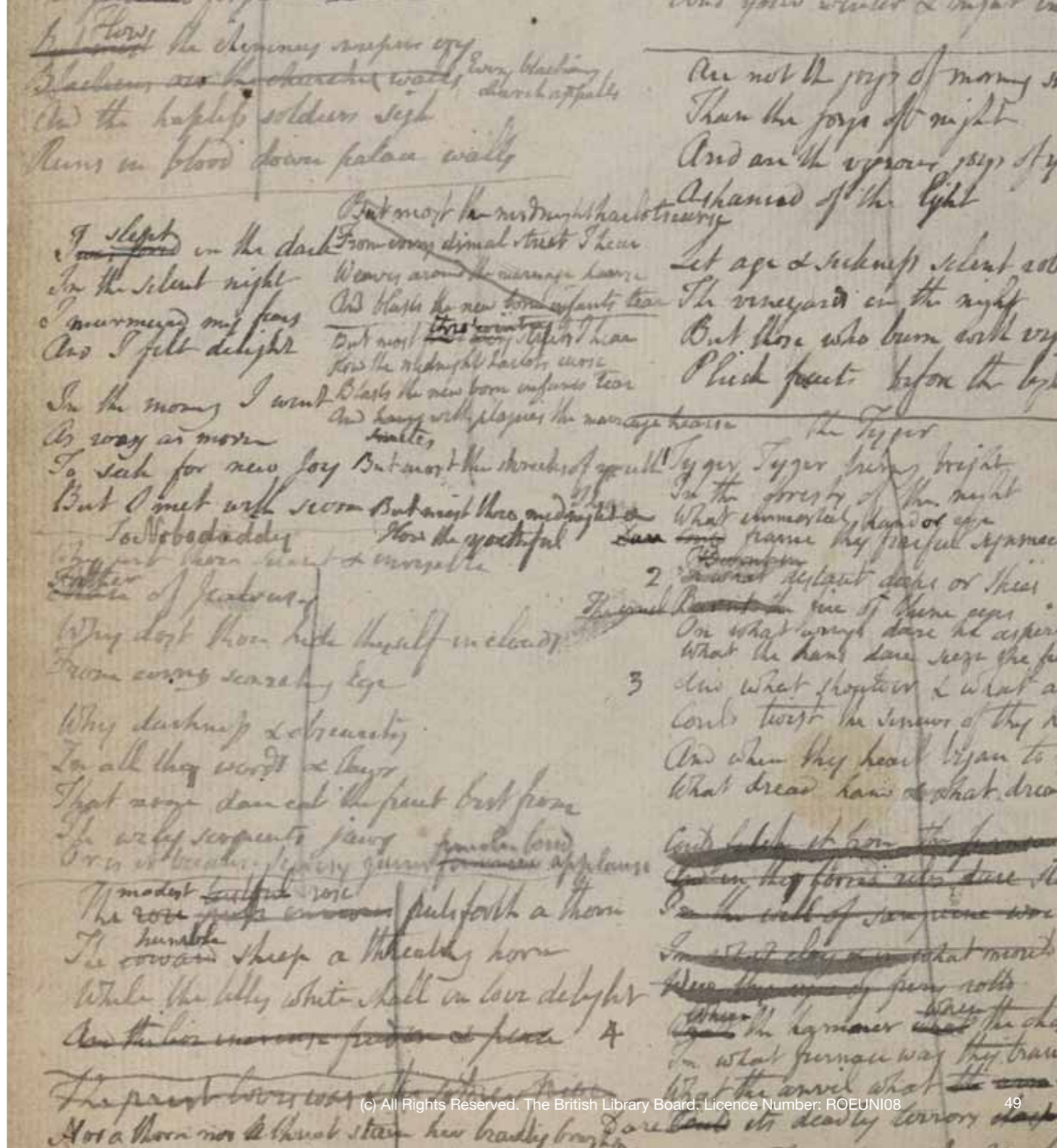
Department of

ENGLISH AND CREATIVE WRITING

The department offers a selection of innovative courses and is proud of its commitment to excellent teaching. With an impressive research record, students can choose from a wide variety of modules taught by enthusiastic, high-profile staff.

Areas of expertise range from Blake to Bellow; from the history of Cupid to the social history of cake; from screenwriting to the experimental sonnet and stand-up comedy. The Department is also home to the National Centre for Research in Children's Literature (NCRCL); 'Rewrite' (the Centre for Research in Creative and Professional Writing), and Research Centres for Literature and Culture and for Romanticism.

Students are well placed to take advantage of the vibrant culture of literary London and are encouraged to explore the resources of the British Library and performance venues such as the Globe Theatre. Students can also enjoy a full programme of events organised by the Department, including research seminars, public lectures and readings, and regular conferences on children's literature, literary journalism, and Romanticism.



Department of

ENGLISH AND CREATIVE WRITING

Creative Writing

300 points £7,900pa

Taught by working writers (including poets, novelists, journalists and screenwriters), the programme introduces and focuses on writing practice in four main genres: fiction, nonfiction, poetry and screenwriting. As students explore the technical craft and process of writing, they develop broad critical awareness and skills. As they progress through the degree programme, they may also choose to specialise.

English Literature

300 points £7,900pa

This programme is for you if you're interested in children's literature or crime fiction, in Shakespeare or stand-up comedy, in Victorian novels or visual texts. The University offers a challenging programme of unrivalled range and richness, as well as a supportive learning environment.

KEY POINTS

- As home of the National Centre for Research in Children's Literature, Roehampton is the only university to offer children's literature options throughout the programme.
- Roehampton is close to London's many theatres, libraries, museums and archives. The University Library also has excellent resources for the study of English Literature.

Student view:

“ Having missed out on the opportunity to attend Cambridge, I took two gap years. When it came to returning to university, I wanted to keep my job in London but still enjoy a campus experience with great teaching. The proximity to London means that we always have access to cultural resources such as the theatre and the British Library. The tutors are intelligent, challenging, dynamic and empathetic and the student life is fantastic. I recommend this course, warmly and without reservation. ”

— Damilola Ajagbonna-Xavier,
English Literature

KEY POINTS

- Roehampton has one of the longest-established Creative Writing undergraduate degrees in the London area.
- It is one of only a few Creative Writing programmes in the UK to offer innovative fiction and poetry and a strong nonfiction strand.
- Specialist options include writing for children, travel writing (with an opportunity to study abroad), screenwriting, writing for the internet, and stand-up comedy. A third-year core module introduces you to writing industry representatives.
- Roehampton has a rolling programme of fellowships – current holders are Jacqueline Wilson and Daljit Khan.

Student view:

“ This degree opened a new creative door for me. I am more confident and can look at my writing with a critical eye without feeling bruised. It was an amazing experience to be on the course, and I dearly miss it after only one year. ”

— Diana Nortey, Creative Writing





Department of

HUMANITIES

The Department's courses are united by their strong confidence in the value of studying the actions, cultures, thoughts and beliefs of humanity past and present. Staff have a commitment to excellence in teaching, and to being friendly and approachable.

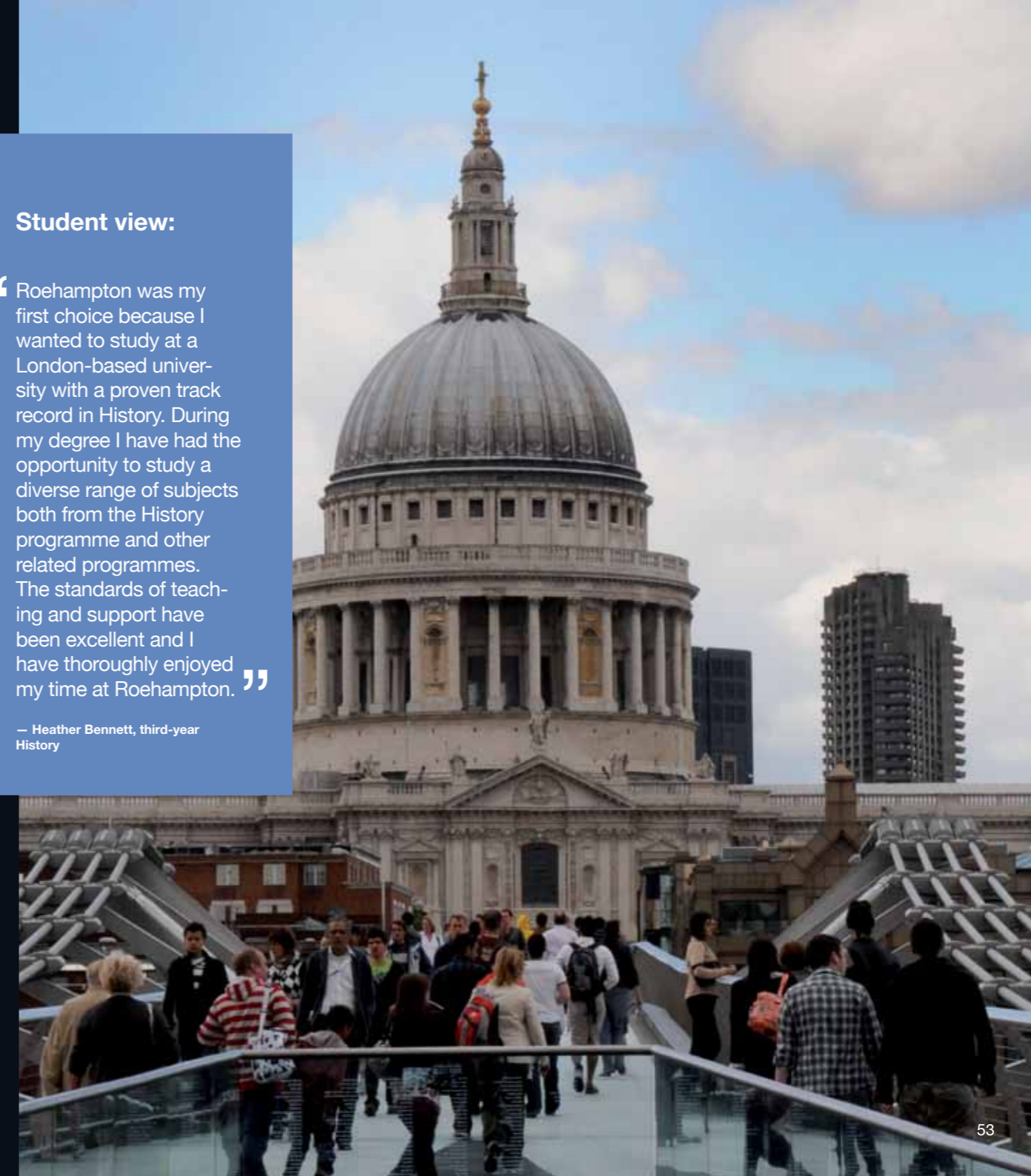
The University's advantageous location allows you to engage with London's world-renowned cultural and historical heritage. Research-active staff include pioneering and influential scholars whose research, writing and public engagement have put Roehampton on the intellectual map.

The Department also has links with a number of local, national and international research centres, archives and museums, including the Centre for Health Tax Research and Queen Mary's Hospital archive and museum group. If you are a graduate in History, Classical Civilisation or similar, seeking to enhance your qualifications and skills to improve your chances of employment or promotion, this course offers you the opportunity to refine your knowledge and practice of historical research, whether you left university recently or some time ago, potentially leading to PhD study in History. Or you may simply enjoy a challenging intellectual exercise for its own sake.

Student view:

“Roehampton was my first choice because I wanted to study at a London-based university with a proven track record in History. During my degree I have had the opportunity to study a diverse range of subjects both from the History programme and other related programmes. The standards of teaching and support have been excellent and I have thoroughly enjoyed my time at Roehampton.”

— Heather Bennett, third-year History



Department of

HUMANITIES

Classical Civilisation

300 points

£7,900pa

This is one of the most wide-ranging Classics undergraduate programmes in the UK. Students can gain practical experience on a work placement, for example, on an archaeological dig or at a museum.

History

300 points

£7,900pa

Students can choose a broad approach throughout their degrees, whilst others will choose to specialise in a particular time period or style of history.

Ministerial Theology (FdA/BTh) n/a* £7,500pa / £7,900pa

This pioneering programme gives you the opportunity to develop your intellectual and practical expertise while continuing to exercise your ministry in the local church or community.

**There are no formal tariffs for Foundation Degrees*

Philosophy

300 points

£7,900pa

The programme is both a member of the Institute of Philosophy University of London and an agent of the Royal Institute of Philosophy, and students have access to their lectures, seminars and conferences.

Theology and Religious Studies

300 points

£7,900pa

The programme was rated the UK's 10th best Theology/Religious Studies course in the latest Guardian University Guide.

Student view:

“ During my time at Vindolanda I was able to learn about Roman Britain in a hands-on fashion and this contributed greatly to my decision on my third-year dissertation topic to be on the frontiers of Roman Britain. ”

— Sophie Dobson, Classical Civilisation

Theology and Religious

Studies was rated the

UK's 10th best Theology/

Religious Studies course

in the latest Guardian

University Guide.

Student views:

“ Attending the Royal Institute of Philosophy lectures and running the Philosophy Society has allowed me to engage with people who hold similar interests to myself, whilst deepening my understanding of contemporary approaches to a range of issues. ”

— Mandy Brown, Philosophy graduate and ex-President of the Roehampton Student Philosophy Society, now works as a Policy Adviser to Ministers of State at HM Treasury

“ I had been looking for a course like this for a long time. Once I found it I have never looked back. Being at Roehampton has changed my whole outlook on life. ”

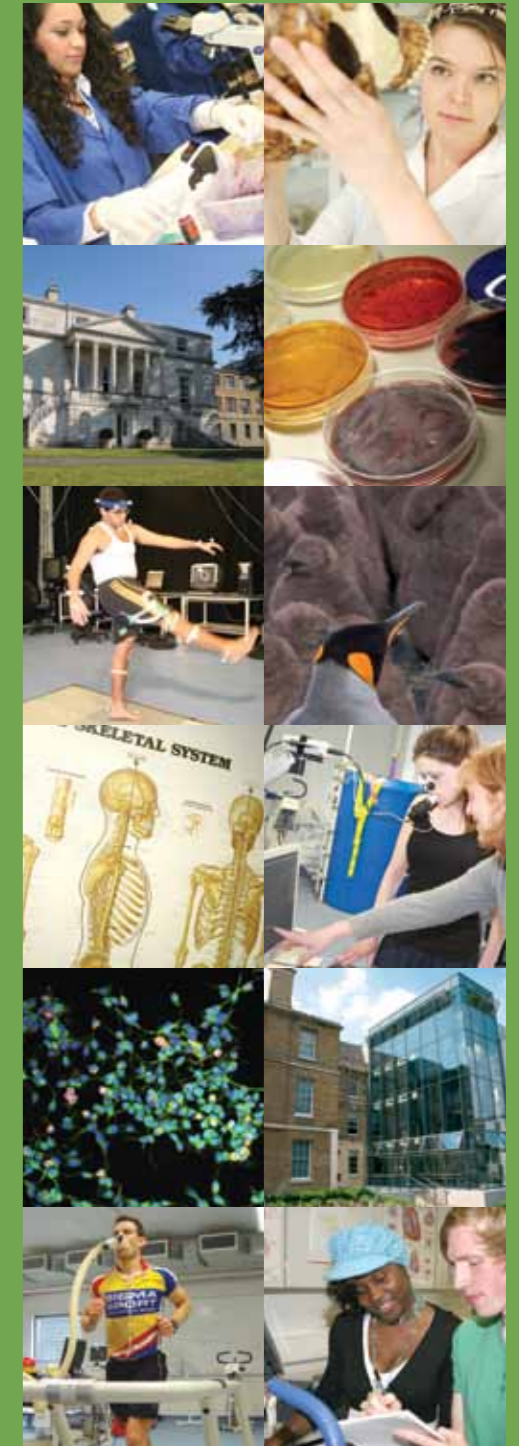
— FdA/BTh Ministerial Theology student



Department of
LIFE SCIENCES

The Department offers a supportive and stimulating environment in which to pursue academic excellence. Students enjoy the most complete laboratory experience, and our London location gives them easy access to museums, biological collections and field visits.

The Department is home to courses that are underpinned by first-class research carried out by staff members who are passionate about the development of new learning technologies to enhance the student experience. Roehampton's programmes are continuously updated to reflect current scientific advances, and designed to produce highly employable graduates with skills that meet the needs of modern society. The departments also works with a range of organisations in the biomedical and healthcare industries on knowledge transfer activities and promoting public engagement in science. The scale, scope and quality of our offerings at Roehampton are, we believe, without equal.





Department of
LIFE SCIENCES

Anthropology 320 points £7,900pa

Explore the versatility and diversity of humankind as you focus on differences in cultures, on politics and religions around the world, and on human evolution and adaptation to the environment.

Biological Anthropology 320 points £7,900pa

Explore the place of humans in the biological world with this challenging programme, which examines the human species with a focus on evolution, disease, genetics and adaptation to diverse environments. Humans' place in the primate order is explored in the context of our species' cultural evolution.

Biological Sciences 320 points £8,250pa

How was Dolly the sheep cloned? How bio-engineered is the food we eat? This programme explores the molecular, cellular and organismal biology essential for understanding modern biology. Learn about rapidly developing areas such as biotechnology and recombinant DNA technology and their social implications as well as more traditional aspects of animal and plant biology.

Biomedical Sciences 320 points £8,250pa

Designed for students with a broad interest in the medical aspects of biology, this programme offers a practical approach to the subject and prepares you for careers in bioscience or work in medical laboratories. You will gain experience in laboratory practices, instrumentation and analytical techniques.

“Roehampton has become a very well-known name in anthropological circles. We work on topics in primatology and human evolution, including fieldwork in Namibia, Nigeria, Puerto Rico and Brazil.”

— Ann MacLarnon, Professor of Anthropology

The Sport Roehampton Performance Centre is the best laboratory of its type in London and includes a climatic chamber and automated motion-capture systems.

Nutrition and Health 320 points £7,900pa

Good nutrition enhances wellbeing and prevents disease, so the state of our health is largely dependent on what we eat. This popular programme analyses the connection between food and health, and teaches you how to apply this knowledge to individuals and the general public. This programme has been fully accredited by the Nutrition Society and on graduation you become a Registered Associate Nutritionist.

Social Anthropology 320 points £7,900pa

Social anthropologists engage in the fascinating study of human societies in all their diversity and complexity, from the smallest groups to mass western social systems. The programme focuses on social issues such as variations in family structures, cultural traditions, gender and sexuality, and religious, political and economic systems.

Sport and Exercise Sciences 300 points £8,250pa

This programme specialises in the development of skills in the scientific disciplines of physiology, biomechanics and psychology. You learn how to enhance the physical and biomechanical performance of athletes, how psychological intervention strategies can improve mental skills and how exercise and physical activity can enhance wellbeing. Roehampton is close to renowned sport venues such as: Wimbledon (tennis), Twickenham (rugby), Harlequins, Rugby, Chelsea and Fulham football clubs.

Sport Psychology 300 points £7,900pa

What determines whether a footballer scores in a World Cup penalty shoot out? How does an Olympic champion cope with media attention? You will explore the answers to questions such as these in this exciting new programme, which draws on Roehampton's strong reputation in teaching Sport Science and Psychology. Graduates are entitled to graduate membership of the British Psychological Society. This is the first step towards becoming a Chartered Psychologist.

Zoology 320 points £8,250pa

Zoology at Roehampton explores animal biology through a wide and fascinating range of core and optional modules. You gain an in-depth understanding of the evolution, anatomy, physiology, behaviour and ecology of animals as well as a broad general knowledge of modern animal biology. The programme includes a residential field course and many opportunities for local fieldwork.



Student view:

“ My journalism lectures are lively and the programme itself is really hands-on. Practical assignments, including work placements, mean we get real-world experience before graduating. ”

— Adeyemi Akinyemi, third-year Journalism

Department of
MEDIA, CULTURE AND LANGUAGE

The Department offers academically rigorous courses with a strong focus on research as well as practice. The quality of our teaching and student support has been highly praised; for example, our Modern Languages and Linguistics subject area was ranked eighth nationally in the Guardian’s University Guide 2011. In addition, our research was well placed in the 2008 Research Assessment Exercise.

You will have the opportunity to participate in the Department’s strong research culture, manifested in its four Research Centres and its dynamic MPhil/PhD students. You will also benefit from the real-world experience of our staff, who are not only undertaking high-quality research but are also involved in the production of works of national and international standing.

Our London location allows you to engage with the city’s world-renowned creative industries as well as its rich cultural and historical heritage, and to attend a multitude of relevant conferences and research seminars. The strong links we have with employers and industry have led to internships and work placements, course development, and guest speakers lecturing on campus.

Department of

MEDIA, CULTURE AND LANGUAGE



On our website you can view two films made by Roehampton students for their third-year graduation documentaries. One of the films, called Behind the Banner, won the Royal Television Society London Centre Student Television Award for undergraduate factual. www.roehampton.ac.uk/undergraduate-courses/film/studentwork

English Language and Linguistics

300 points £7,900pa

From the sounds children make to the way people speak to the elderly; from media spin to everyday conversations, linguistics examines the structure and use of language.

Film

300 points £8,250pa

The programme allows you to study and produce film in its social, cultural and historical contexts while interrogating film form, either as a digital filmmaker or as a film theorist and historian.

Journalism

300 points £7,900pa

You have an opportunity to gain work experience, with help from a specialist placement officer. Past students have worked at the BBC, Sky, MTV, the Independent, the Daily Express, OK! and Vogue.

Media and Culture

300 points £7,900pa

You will study contemporary issues in the media as well as consider current debates about culture. You also have the opportunity to gain work experience with some of the country's leading companies and organisations in the media and creative industries.

Modern Languages

300 points £7,900pa

All students study two languages (French, Spanish or English as a Foreign Language) together with modules on European, Francophone and Latin American culture and society. One of the two main languages may be at beginners' level. You spend the third year of this four-year course abroad, studying at one of our partner institutions or gaining work experience, perhaps as an English-language assistant in a school. English as a Foreign Language, French and Spanish are also offered in combination with subjects outside Modern Languages.

Modern Languages – Translation

320 points £7,900pa

All students study two foreign languages (French, Spanish or English as a Foreign Language) together with modules in professional translation. One of the two main languages may be at beginners' level. You spend the third year of this four-year course abroad, studying at one of our specialist translation school partners or gaining relevant work experience.

Photography

300 points £7,900pa

The programme will enable students to accumulate a range of advanced technical skills alongside a comprehensive engagement with provocative critical and theoretical materials. The University has a new purpose-built studio, darkroom and Mac suite.

Teaching English to Speakers of Other Languages (TESOL)

300 points £7,900pa

This programme is unique in providing a sound base for a career in the field of TESOL: teaching, testing, materials development and design, or administration.

NEW COURSES

(For full details please visit, www.roehampton.ac.uk or call 020 8392 3232)

Spanish and English literature

Spanish and film

Spanish and photography

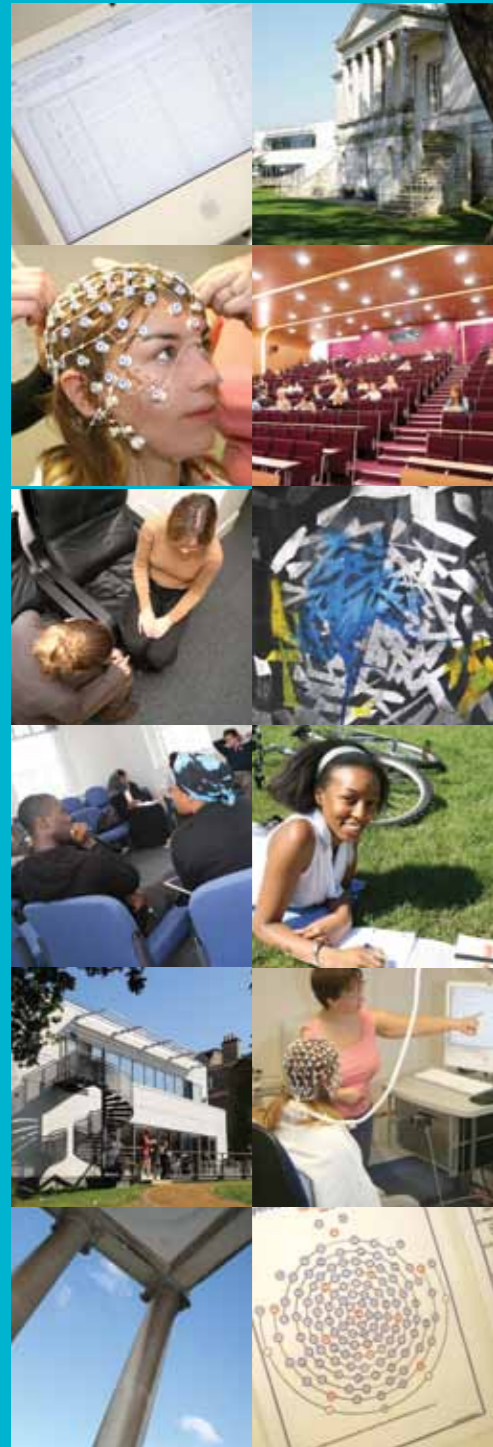
Spanish and business management

French and English literature

French and film

French and photography

French and business management



Department of

PSYCHOLOGY

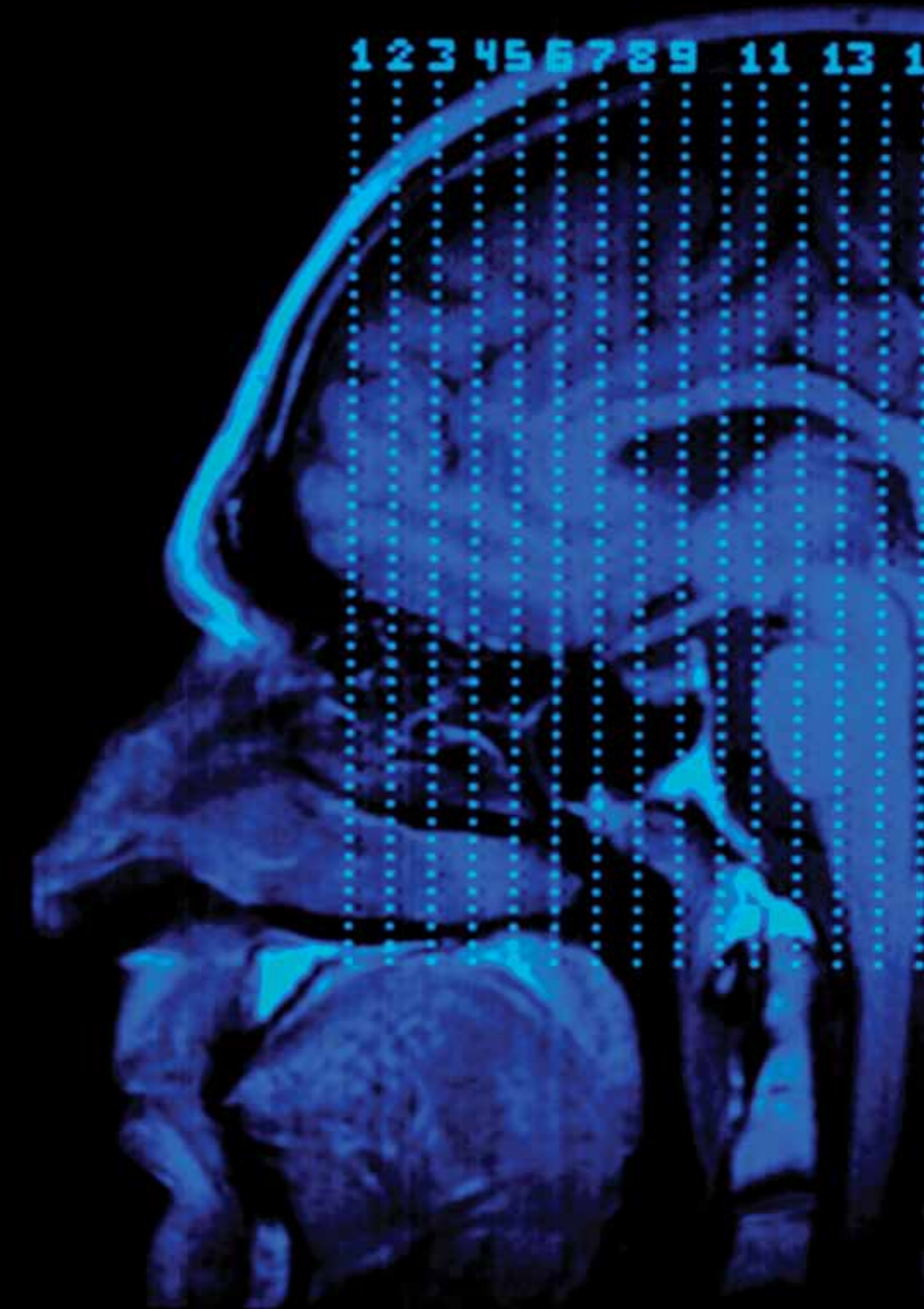
The Department brings together world-leading research and teaching in all major areas of psychology, psychological therapies and the arts and play therapies. As one of the largest psychological training departments in the country, it provides opportunities for researchers in a range of disciplines to investigate an array of psychological problems and phenomena.

The Department is committed to using the latest technology and is part of the CUBIC MRI consortium, providing access to an fMRI scanner. Our work attracts staff and students from around the world. Together they create a dynamic environment for both study and research, based at our stunning campus beside Richmond Park. We also host a range of specialist seminars, workshops and guest lectures.

Student views:

- “ Exciting subject; the tutors are enthusiastic in their approach and have an extensive knowledge of the subject. ”
- “ The highlight for me has been being able to apply my learning from the course in practice with clients. ”
- “ Challenging and thought-provoking. The existential module was both painful and enlightening. ”

— Integrative Counselling students



Department of

PSYCHOLOGY

Counselling Psychology 300 points £7,900pa

This pioneering programme combines the study of human functioning and development in psychology and counselling. It combines the theoretical foundations of both counselling models and psychology and offers experiential group work. This programme provides the basis for careers in psychology and other helping professions. Graduates are entitled to graduate membership of the British Psychological Society.

Integrative Counselling Interview £7,900pa

This experiential practitioner-based programme examines theoretical issues from a critical perspective while providing a thoughtful, relational approach to practice. Teaching staff are all practising therapists and as researchers are members of the University's internationally renowned Research Centre for Therapeutic Education. This programme is approved by the United Kingdom Council for Psychotherapy (UKCP) as a pathway to professional registration as a Psychotherapeutic Counsellor.

Psychology 300 points £7,900pa

How do drugs alter our perceptions? Does a psychopath differ from other people? What is personality? Psychology, the study of human experience and behaviour, addresses these questions and many more. The discipline is constantly evolving as exciting new developments allow us even greater understanding of human behaviour and its root causes. Graduates are entitled to graduate membership of the British Psychological Society. This is the first step towards becoming a Chartered Psychologist.

A thriving alumni group (SAFPAC) organises regular presentations by eminent guest speakers and offers continued professional support and networking following graduation.

Student view:

“ So far, the degree at Roehampton has exceeded my expectations – I’ve really been challenged intellectually and I’m enjoying that. The help and support I’ve received has been excellent. The staff are so approachable and eager to give you a hand and their office doors always seem to be open. It’s becoming clear that I’ll want to stay on and pursue a postgraduate degree, probably in Dramatherapy. ”

— Sonya Goodchild, Psychology

Student view:

“ Roehampton was one of the first universities in the country to offer a degree in both Psychology and Counselling, and this was a really attractive combination to me.

I want to work with children who have special needs, so a degree in Psychology seemed like a logical choice. The fact that Roehampton had such a good image and also offers a base in London really appealed to me too.

The degree has been very enjoyable and well organised. ”

— Charlaine Illingworth, first-year Counselling Psychology





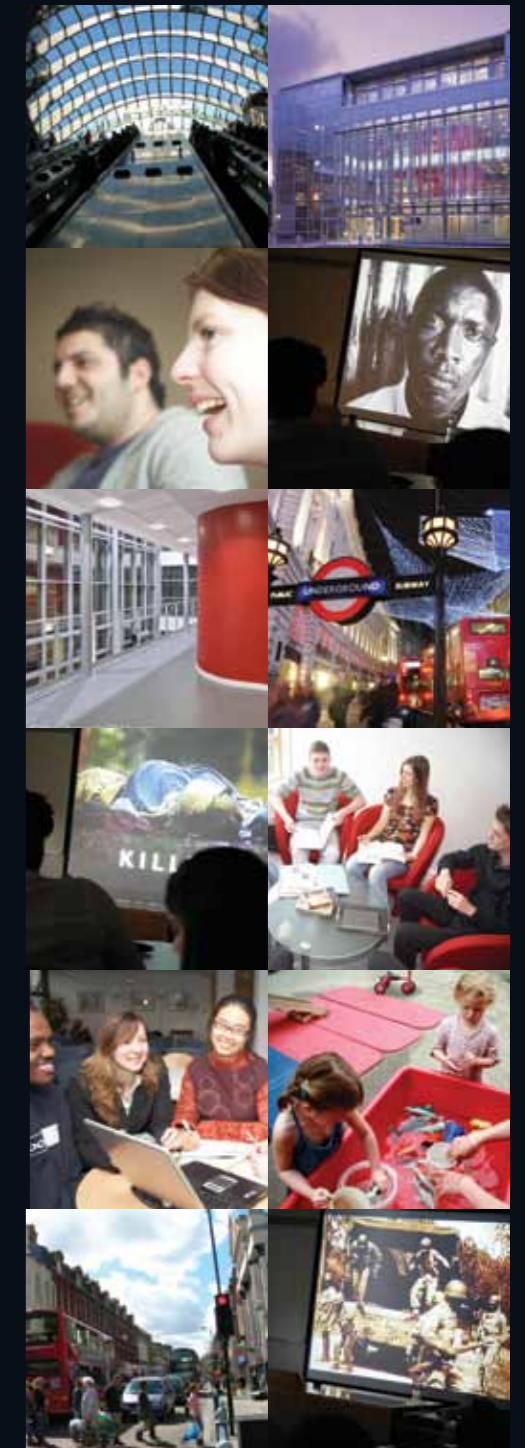
Department of
SOCIAL SCIENCES

Social science is a diverse, dynamic and challenging field, confronting some of the most pressing issues facing the global community today. This international perspective is reflected in the Department of Social Sciences at Roehampton, which brings together academics involved in teaching and international research in four distinct yet complementary areas; sociology, childhood and society, human rights and criminology.

Our teaching is informed by the internationally recognised research carried by staff in areas such as migration, multiculturalism, “honour” killings, hate crime, substance abuse and addiction, urban criminology, health policy, childhood development, and conflict and commemoration.

The Department is also home to the Crucible Centre for Human Rights and Social Justice. This was the first institution to be awarded the UK government’s Centre for Excellence in Human Rights Teaching and Learning, which it held from 2005 to 2010. This reflects Roehampton’s central commitment to the promotion of social justice through excellence in teaching learning and research.

In addition to academic research, members of the Department of Social Sciences are also involved in consultancy and collaboration on behalf of, among others, the UK government and the European Union as well as international NGOs and statutory human rights bodies.



Department of

SOCIAL SCIENCES

Criminology 280 points £7,900pa

Criminology is an intellectually exciting subject that tackles problems faced by contemporary society. It is the academic study of criminalisation, crime and disorder, criminal justice systems, and responses to crime. At the University of Roehampton, studying Criminology will encourage you to think critically about the creation of law, implementation of criminal justice policy, and the operation of justice.

Criminology can be seen as the way in which common sense notions about crime and disorder are challenged, and a broader understanding of these issues is developed.

Sociology 280 points £7,900pa

Sociology challenges our everyday assumptions about the world we live in. It encourages us to think critically about our lives. Sociology explains how we think about things, and how we do things, and why. Sociology helps us understand a vast range of relationships and activities. For example, on the Sociology programme at Roehampton, you could study: Food and Eating, Contemporary Relationships, Childhood Studies, Health and Wellbeing, Democracy and Human Rights.

Not only will you learn about these topics, you will understand how information is gathered about them, and how this can be used to generate explanations for our social lives.

Dr Aisha Gill, Senior Lecturer of Criminology

is an expert on violence against women and

has advised the UK government and the UN



Student view:

“ The programme is intellectually stimulating and provides a wonderful insight into the world we live in. It is academically challenging but everything is kept relevant which makes it an enjoyable subject for anyone with an interest in social issues. ”

— Sophie Charles, third-year Criminology

KEY POINTS

- The areas covered by the department are culturally relevant and constantly changing — to make for a dynamic and exciting student experience.
- The University has well-equipped computing facilities. You will be taught by a range of staff who have expertise, practical knowledge and research experience in their specialist areas. In addition, the School encourages contact with outside agencies and speakers.
- Sociology involves both theoretical analysis and the practice of gathering sociological data and evidence. Field trips are an integral component within a selection of second and third year modules, adding to the variety of learning environments.
- Criminology students carry out work placements in places such as; prison visitor centres, Victim Support, Witness Service, youth offending teams, Police, Westminster Drug Project and NACRO.



Getting here

Travelling by public transport

The University of Roehampton is in zone three of the London Transport system.

National Rail

From Barnes station the main site (Digby Stuart, Froebel and Southlands) is a 10-minute walk and Whitelands and Mount Clare are a 25-minute walk, or a short ride on the 72 or 265 buses. Trains from Barnes go to Clapham Junction and Waterloo in one direction and Kingston, Richmond, Staines and Windsor in the other direction.

Underground

From Hammersmith (District/Piccadilly/Hammersmith and City lines) take the 72 bus from stop K in the Lower Bus Station next to the shopping centre (above the Underground station). From Putney Bridge (District Line) take the 265 bus outside the station.

Bus

The University is well served by buses that link Roehampton to Hammersmith, Richmond, Kingston, Putney, Clapham Junction, Wimbledon and New Malden.

The 72, 265 and 493 buses stop next to the main site (at Queen Mary's Hospital) and close to Whitelands and Mount Clare (at the junction of Danebury Avenue).

The 170 and 430 buses stop on Danebury Avenue, which is very close to Whitelands and Mount Clare and a short walk from the main site.

Travelling by car

Please note, parking is limited on campus and in nearby streets.

All University sites are on or near the A306 Roehampton Lane, between the A3 and the A205 South Circular (Upper Richmond Road). From the A3, turn into the A306 Roehampton Lane. For Whitelands turn left after 0.5 mile into Danebury Avenue and then turn immediately left into Holybourne Avenue; for Mount Clare, follow Danebury Avenue and turn left into Minstead Gardens. For the main site, stay on Roehampton Lane for a further 0.5 mile; you will find the main site on the left, opposite Queen Mary's Hospital.

From the A205 South Circular heading west, turn left into the A306 Roehampton Lane. The main site is approximately 0.75 mile on the right. For Whitelands continue for about 0.5 mile and then turn right at the traffic lights into Danebury Avenue and then turn immediately left into Holybourne Avenue; for Mount Clare follow Danebury Avenue and turn left into Minstead Gardens.

From the A205 South Circular heading east, there is no right turn into Roehampton Lane. At this junction, follow the sign for Putney Bridge and Roehampton and then immediately follow the signs for Dorking (A24), Guildford/Portsmouth (A3) and Roehampton. This takes you in a loop to head west and turn left into the A306 Roehampton Lane at the next junction.

Postcodes for satellite navigation systems are as follows: Digby Stuart and Southlands College SW15 5PU, Froebel College SW15 5PJ, Whitelands College SW15 4JD.

Travelling by bicycle

The University can be easily reached by bike. There are cycle parking stands throughout the campus. The Transport for London online journey planner can be used to provide route maps to the University, see <http://journeyplanner.tfl.gov.uk>

**FOR THE LATEST INFORMATION,
VIDEOS, STUDENT VIEWS,
VIRTUAL TOURS, OPEN DAY
REGISTRATION AND MORE, VISIT:
www.roehampton.ac.uk**



Picture yourself here...

If you require an audio, Braille or large-text version of this publication, please call the Enquiries Office on +44 (0)20 8392 3232. Please allow a minimum of 10 days for delivery.

The University of Roehampton is committed to being an equal opportunities education provider and will therefore make reasonable adjustments for disabled applicants and students.

Every effort has been made to ensure that the information given in this publication is accurate at the time of going to print and the University will use all reasonable efforts to deliver the programmes as described. However, the University reserves the right, without notice, to withdraw or change the programmes or programme combinations included in this prospectus, to alter tuition fees, entry requirements, and the facilities or services provided, and cannot accept responsibility or liability for any errors, omissions, cancellations or alterations. Please check the website for up-to-date information.





www.roehampton.ac.uk

twitter.com/roehamptonuni ■ youtube.com/roehamptonuniversity ■ facebook.com/roehampton.uni