



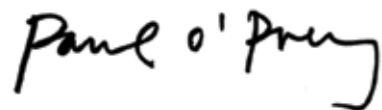
Key facts about Roehampton

- Number one university in London for quality lectures, financial support, students' union. *(i-graduate survey 2010)*
- Top post-92 university in London for graduate employment. *(DLHE report for 2010 graduates)*
- Number one London university for the environment on and around campus. *(Times Higher Education 2010 Student Experience Survey)*
- Number one university in the UK for research in both Dance and Biological Anthropology. *(RAE 2008)*
- 78% of research of international standing and 33% internationally excellent or world class. *(RAE 2008)*
- 9,000 students (73% undergraduate, 27% postgraduate).
- Students from more than 130 different countries attend the University.
- Stunning 54-acre campus beside Richmond Park, London.
- Scholarship scheme for alumni and international students.

Thank you for taking the time to enquire about the University of Roehampton, I appreciate that choosing the right university is a very important decision to make and hope this guide provides you with insight into the first-rate postgraduate education Roehampton has to offer.

With high-quality facilities and teaching by experts who are leaders in their fields, a Roehampton degree is specifically designed to help you reach your potential and equip you with the necessary skills to thrive in the job market.

Roehampton provides the only traditional campus experience for students in London — one of the most energetic and cosmopolitan cities in the world. With extensive grounds and a rich heritage dating back to the 1800s, the University of Roehampton has so much to offer. I hope you will come and see for yourself.



Professor Paul O'Prey,
Vice-Chancellor



Welcome

www.roehampton.ac.uk

facebook.com/roehampton.uni

twitter.com/roehamptonuni

vimeo.com/roehampton



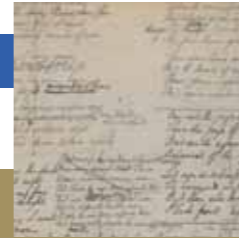
CONTENTS

- Course list9
- Applying to University 10
- Choose Roehampton12
 - A rich history12
 - High quality education14
 - Research Centres15
 - The Roehampton graduate16
 - Fees and funding18
- Student life20
 - Accommodation22
 - The Colleges24
 - Sport Roehampton / Students' Union.....27
 - International students at Roehampton.....28
- Academic Departments31–73
- Online degrees with Laureate Online Education37
- Getting here77



38

Department of Dance



50

Department of English and Creative Writing



63

Department of Media, Culture and Language



33

Business School



47

Department of Education



59

Department of Life Sciences



71

Department of Social Science



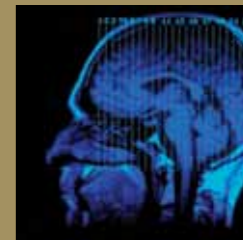
43

Department of Drama, Theatre and Performance



54

Department of Humanities



66

Department of Psychology



Choose your course

Business School

International Management
International Management with Finance
International Management with Information Systems
International Management with HRM
International Management with Marketing
Marketing
MBA (Business Administration)

Online degrees with Laureate Online Education

MBA
MSc Project Management
MSc Information Systems Management

Dance

Ballet Studies
Choreography
Choreography and Performance
Choreomundus
Community Dance
Dance Anthropology
Dance Studies
Global Dance: Politics, Identities and Institutions
South Asian Dance Studies

Drama, Theatre and Performance

Performance and Creative Research

Education

Applied Music Studies (Education, Psychology or Special Educational Needs)
Art, Craft and Design Education
Early Childhood Studies
Education
Education, Leadership and Management
English Education
PGCE Primary (full- and part-time)
PGCE Secondary
Social Research Methods
Special and Inclusive Education
Special and Inclusive Education (Erasmus Mundus)

English and Creative Writing

Children's Literature (on-site)
Children's Literature (distance learning)
Creative and Professional Writing
Modern Literature and Culture

Humanities

Christian Ministry
Historical Research

Life Sciences

Biomechanics
Clinical Neuroscience
Clinical Nutrition
Health Sciences
Obesity: Risks and Prevention
Primate Biology, Behaviour and Conservation
Sport and Exercise Physiology
Sport and Exercise Science
Sport Psychology
Stress and Health

Media, Culture and Language

Audiovisual Translation
Documentary
Media, Culture and Identity
Specialised Translation

Psychology

Applied Psychological Research
Art Psychotherapy
Attachment Studies
Counselling and Psychotherapy
Counselling Psychology (BPS)
Dance Movement Psychotherapy
Dramatherapy
Integrative Counselling and Psychotherapy
Music Therapy
Play Therapy

Social Science

Human Rights
Human Rights and International Relations

Applying to your course

UK/EU applicants

UKPASS is the postgraduate application service supplied by UCAS and gives you a simple and efficient way to apply online. It allows you to search for a course and guides you through the application process. There is no application fee.

You should apply via UKPASS for all postgraduate taught courses, including MBA and PsychD Counselling Psychology.

You can track your applications as they progress, and can also receive and reply to offers online at: www.ukpass.ac.uk

Overseas applicants

You make your application direct to the University of Roehampton. You can either make your application on our website, or download the paper application form and post it to us.

You must ensure you include copies of your academic transcripts and certificates, an academic reference and a copy of your English language qualification. If you make your application online, you should include your online application reference number in any further correspondence.

See www.roehampton.ac.uk/international or contact us directly on international@roehampton.ac.uk.

What if I need help?

Contact the Enquiries Team by email: enquiries@roehampton.ac.uk or on tel: +44 (0)20 8392 3232.



Choose Roehampton

The University of Roehampton has been providing education through its colleges for more than 170 years. It has a rich educational history, a traditional campus experience, high quality teaching and research, a strong focus on students and a fair and transparent fee structure.

A traditional campus University

Roehampton is the only traditional campus university in London, located in the south-west of the city about 30 minutes from the West End.

The campus has many listed buildings and gardens dating back to the 18th century, enhanced by contemporary buildings and cutting-edge facilities. Roehampton is a collegiate university with four colleges: Digby Stuart, Froebel, Southlands and Whitelands. The colleges play a key role in the community and ethos, as well as the governance of the University.

Strong values from a rich history

Like most universities, Roehampton is changing as we manage the transition to the new demand-led funding regime. At the same time, we remain loyal to the values and traditions that form the core of our strength as an institution and which to a large extent draw on our college foundations. These include a fundamental belief in the power of education to transform lives and communities, a commitment to encouraging the integrity and potential of individuals, and a passion for the highest quality of education and scholarship.



Whitelands College founded as the flagship teacher training college for the Church of England, it was one of the first colleges of higher education in the UK to admit women.

1872

Digby Stuart College established by the Society of the Sacred Heart as a teacher training college for Roman Catholic women.

1892

Froebel College established to further the values of Friedrich Froebel, the German pedagogue who pioneered early years' education.

The four Colleges join to form the **Roehampton Institute of Higher Education** and add a wide variety of degree courses in the arts, social science and sciences.

1984

The Institute becomes a constituent college of the **University of Surrey**.

Roehampton and the University of Surrey become **federated partners**.

2000

Roehampton University becomes an **independent university**.

2004

1841

Southlands College founded by Methodists as a training college for women teachers.

1874

1975

A high quality education

Join our growing postgraduate community and you will benefit from outstanding academic staff working at the cutting edge of their subjects. They will ensure that you benefit from the very best in teaching and learning and gain a qualification from an institution with an enviable record in postgraduate employment.

A vibrant research culture

Roehampton has an impressive reputation for research and a vibrant research culture which attracts students from all over the world. Many professors are internationally renowned for their work and have an impressive track record of publication.

The 2008 Research Assessment Exercise (RAE) found that 78% of our research was of an internationally recognised standard, and we ranked number one in the UK for Biological Anthropology and Dance. We have 29 research centres across the University, committed to extending the range, depth and impact of our research.

The Graduate School is the centre of the research student community at Roehampton. It provides career plans, promotes seminars, events and funding opportunities, and acts as a forum for research students of different disciplines to share ideas and information.

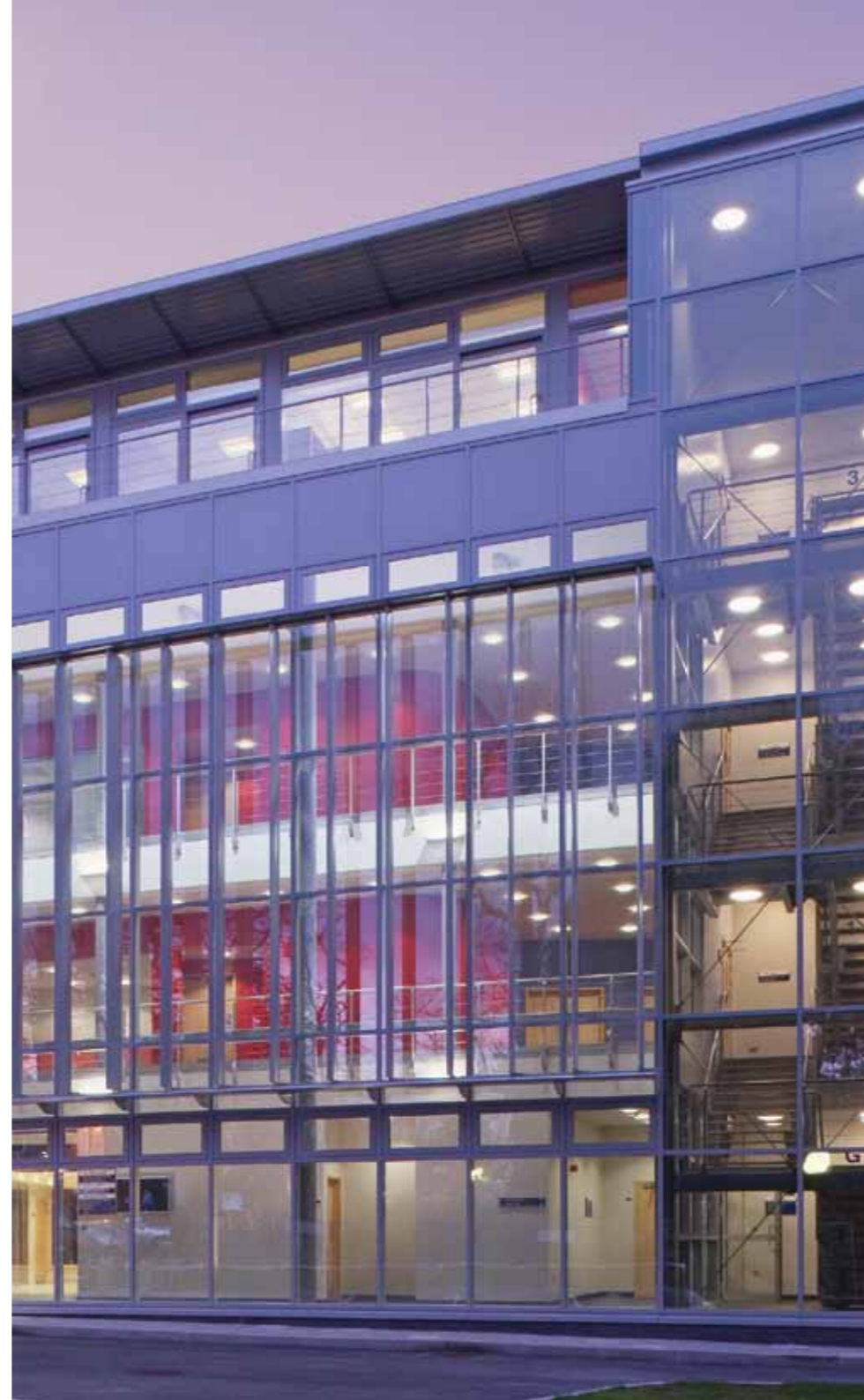
A real university experience

The University of Roehampton has its roots in the traditions of its four constituent colleges – Digby Stuart, Froebel, Southlands and Whitelands – which were all formed in the 19th century.

Studying at a campus university gives students a sense of community and at Roehampton you are not only part of the University, but will also have an instant identity within the smaller world of your college. The four colleges serve as the focal points for the University's vibrant social scene and there are healthy intercollegiate rivalries in sport and other traditional celebrations. Accommodation is on campus with facilities and support services also on your doorstep.

Student Partnership

The University is building an innovative Student Partnership aimed at encouraging students to take a greater share of responsibility for the success of their university. The Student Senate is chaired by the Vice-Chancellor and reports directly to Senate and Council. Students are represented on most committees of Council and Senate and Student Senate has a budget of £50,000 for students to invest directly in areas they consider important.



Research Centres

Business School

Centre for Organisational Research

Department of Dance

Centre for Dance Research (CDR)

Department of Drama, Theatre and Performance

Research Centre for Performance and Creative Exchange
Research Group in Renaissance Studies

Department of Education

Applied Music Research Centre (AMRC)
Centre for Educational Research in Equalities, Policy and Pedagogy (CEREPP)
Centre for Research in Beliefs, Rights and Values in Education (BRaVE)
Early Childhood Research Centre (ECRC)

Department of English and Creative Writing

Literature and Culture Research Centre
National Centre for Research in Children's Literature (NCRCL)
ReWrite – Centre for Research in Creative and Professional Writing
Centre for Research in Romanticism (CRR)

Department of Humanities

Centre for Hearth Tax Research
Centre for Research in History and Theory
Research Group in Renaissance Studies
Research Group in Sex, Gender and Sexuality (SeGS)
Digby Stuart Research Centre for Catholic Studies (DSRC)

Department of Life Sciences

Centre for Research in Evolutionary and Environmental Anthropology (CREEA)
Centre for Research in Ecology (CRE)
Sport and Exercise Science Research Centre (SESRC)
Health Sciences Research Centre (HSRC)

Department of Media, Culture and Language

Centre for Language Assessment Research (CLARe)
Centre for Research in English Language and Linguistics (CRELL)
Centre for Research in Film and Audiovisual Cultures (CRFAC)
Centre for Research in Modern Literature and Culture
Centre for Research in Translation and Transcultural Studies
Hispanic Research Centre (HRC)

Department of Psychology

Centre for Applied Research and Assessment in Child and Adolescent Wellbeing (GARACAW)
Centre for Research in Cognition, Emotion and Interaction (CRICEI)
Clinical and Health Psychology Research Centre (CHP)
Research Centre for Therapeutic Education (RCTE)

Department of Social Science

Crucible Centre for Human Rights Research
Centre for Research on Migration and Multiculturalism
Social Governance Research Group

The Roehampton graduate

We believe the Roehampton experience is much more than your course; it's about the development of you as a person. The Employability and Entrepreneurship team at Roehampton help and support all students on their journey into employment. They provide professional and impartial information, advice and guidance on all employability matters, offering support in considering career options, searching for and application of jobs, volunteering, self-employment and work experience options. All Roehampton students are able to consult with the team during their studies and at any time after graduation.

JobShop

All postgraduate students can register with our online vacancy site to find opportunities of part-time local work, volunteer opportunities and full time employment and graduate jobs. This service is free and available to all Roehampton students and alumni.

Choose Roehampton

Top new London university
for graduate employment



Choose Roehampton

A career investment

At Roehampton, we understand that postgraduate study is an important investment, that's why we've set our fees at a fair level and with a straightforward band structure, so you know exactly what you're paying.

It can be a big financial commitment, but a postgraduate degree makes you stand out in the job market, and can help you progress further and faster in your chosen career.

UK/EU Tuition Fees 2012/13

Roehampton's postgraduate course fees sit across three bands, with the exception of the MBA course, Arts and Play Therapy, and Choreography courses – see additional information below. See individual course web pages for the appropriate band.

Full-time		Part-time (cost per 10 credits)		PGCE	
Band 1	£7,700	Band 1	£420	Band 1	£420
Band 2	£5,500	Band 2	£300	Band 2	£300
Band 3	£4,400	Band 3	£240	Band 3	£240
MBA	£11,200				

Non-standard Masters courses (including Therapies and Choreography courses)	
Band 1: 240 Credit courses	£420 cost per 10 credits
Band 2: 240 Credit courses	£300 cost per 10 credits
Band 3: 240 Credit courses	£240 cost per 10 credits

20% fee reduction for UK/EU alumni

A 20% fee reduction is available to all UK and EU Roehampton graduates who progress onto postgraduate study (except PGCE) at the University in September 2012.

Postgraduate research degrees (MPhil, PhD, PsychD, EdD)

If you are intending to embark on a postgraduate research degree, we have information about funding opportunities on our research website.

International Tuition Fees 2012/13

Postgraduate courses: £10,600 | MBA: £13,000 | PGCE: £10,400
 Doctoral course fees (MPhil/PhD): £10,100 plus a rise in line with inflation, to be confirmed.

Deposit payments

International applicants (except those from the US and Norway) to taught postgraduate courses are required to pay a deposit of £2,500 within 15 days of accepting an offer from Roehampton.

Vice-Chancellor's Scholarship Scheme

The scholarship is made through a reduction in your tuition fees in your first year of study. For 2012/13 entry:

Scholarship Band A:
 £2,000 fee discount/ £2,500 for the MBA.

Scholarship Band B:
 £1,500 fee reduction/ £1,800 for the MBA.

You are entered automatically for consideration upon application; you must have achieved certain levels of academic performance as outlined on our website: www.roehampton.ac.uk/Finance/Scholarships.

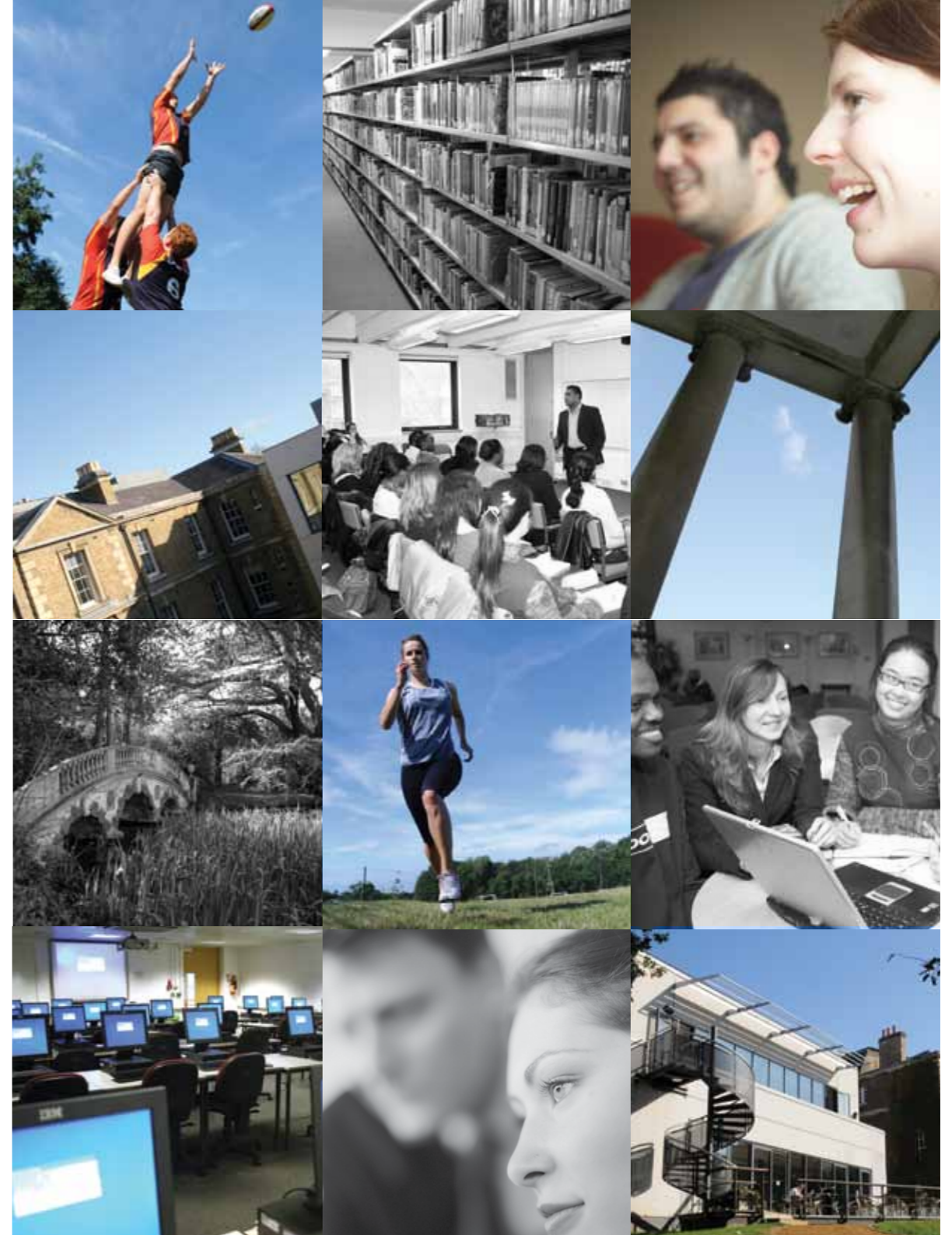
University of Roehampton 2025 Scholarship: £4,000 tuition fee reduction

20 of these scholarships are available to students at all levels of study, including postgraduate research. This scholarship cannot be combined with other university scholarships. See the website for more information: www.roehampton.ac.uk/Finance/Scholarships.

Student life

The University of Roehampton provides an outstanding and welcoming student experience on a beautiful traditional campus with several listed buildings and woodland walks. We are close to Richmond Park and just 20 minutes by train from central London.

Roehampton offers a distinctive collegiate experience with an active social life, 1,500 residential places and a strong emphasis on building community, celebrating our traditions and encouraging shared values and social responsibility.





Student life

Accommodation

Roehampton is London's only campus-based university, which means our residences, teaching rooms and facilities are located on our beautiful park-land campus. We also help students to find privately rented accommodation off campus.

On campus

We have dedicated rooms on campus for postgraduate students, and all international students are guaranteed a room. All rooms have internet access and many are en-suite. The cost includes utilities bills and contents insurance. There are hall reps and resident wardens to support you and security are on hand 24 hours a day, seven days a week. The application process for new students for September 2012 intake starts in April 2012. You can see pictures and 360° tours on our accommodation pages online: www.roehampton.ac.uk/accommodation.

Off campus

Living in or near Roehampton you can benefit from all that London has to offer, while avoiding the high costs of living in the centre of the city. If you are interested in living off campus, there is a wide variety of accommodation suitable for students available to rent in Roehampton and the surrounding area. The University has teamed up with the student accommodation company Studentpad to provide an online search facility for private accommodation available to rent in the local area.

Our off-campus officer can support you in finding accommodation or with any problems when you move in. You will also find a glossary of terms linked to renting property and a description of the types of accommodation providers on our online accommodation pages.

The Colleges

Digby Stuart College

Digby Stuart is a Roman Catholic foundation, first established in 1874 as a women's teacher training college by the Society of the Sacred Heart, an order of French religious women who settled at Roehampton in 1850 having first arrived in England in 1846.

Digby Stuart is home to the Departments of Drama, Theatre and Performance, English and Creative Writing, Humanities, and Social Science.

Froebel College

Froebel College was founded in 1892, by a group committed to the then radical philosophies of Friedrich Froebel who was probably the most influential educationalist of the 19th century.

He argued that the most important part of education was the pre-school period. The College is based within and around Grove House, which dates back to 1792 and was designed by architect James Wyatt for Sir Joshua Vanneck.

The college houses the Departments of Dance and Education, although residential students who live at Froebel can be members of any academic Department.

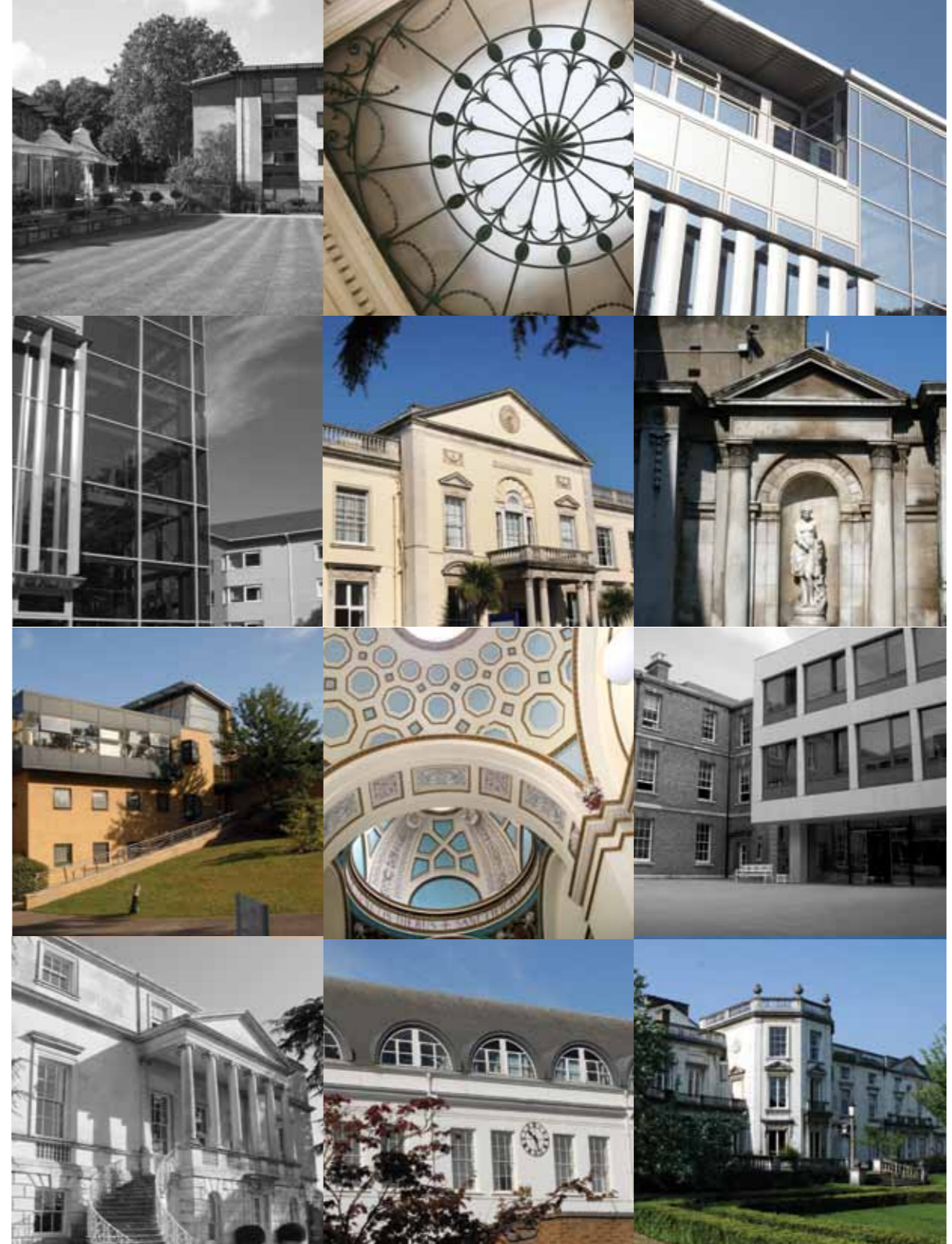
Southlands College

Southlands has a rich history, founded in 1872 by the Methodist Church and, for many years, was a centre for training teachers in the Methodist tradition.

Southlands College forms a large quadrangle on the north end of the University campus. It is a modern building which houses both teaching spaces and en-suite accommodation for nearly 300 students. The college houses the University's Business School and the Department of Media, Culture and Language, but the residential students here can be members of any academic Department.

Whitelands College

Whitelands College is one of the oldest higher education institutions in England. The Church of England's National Society founded the college in 1841 as a teacher training college for women. It took its name from Whitelands House, a Georgian building in the King's Road, Chelsea, previously used as a school. Whitelands is home to the Departments of Life Sciences and Psychology and offers state-of-the-art lecture spaces, seminar rooms and laboratories, social facilities and new self-catering en-suite study bedrooms for resident students.





Sport Roehampton

Sport Roehampton provides opportunities for everyone from beginners to elite performers with the on-campus high-tech gym, sports hall, studio, outdoor courts, and clubs ranging from yoga to squash, and from martial arts to table tennis.

In 2011 Roehampton's Men's Tennis was the British University and Colleges Sport (BUCS) UK Sports Team of the Year. See our website: www.roehampton.ac.uk/sport-roehampton

Students' Union (RSU)

Roehampton Students' Union provides a range of clubs and societies, a strong social and events programme and has an effective campaigns and awareness raising profile.

For the latest news, videos and photos and to listen to their radio station check out the RSU website: www.roehamptonstudent.com

Supporting you

Going to university presents many exciting opportunities and occasional challenges.

We pride ourselves on the type of pastoral help and academic guidance that is on offer to all students throughout their study with us. We offer a broad range of free services - such as a disabilities support, dyslexia support, student counselling, a chaplaincy service and an on-site medical centre - details about which can be accessed through our centralised on-campus Information Centre. Those who have particular requirements are contacted early in the academic year and offered extra guidance and support through their study.

Explore the local area

The areas close to Roehampton provide a wide range of social and cultural experiences. Putney, Wimbledon, Kingston, Richmond and Hammersmith are all a short bus ride away.

There's plenty of entertainment on campus, with regular club nights in the Students' Union, and many societies to join and sports to take part in. If you want to explore central London, the West End is just 30 minutes away.

International students at Roehampton

From its warm welcome to its quality teaching staff, the University of Roehampton has been acknowledged for its first-class experience, having been ranked highly in the globally recognised i-graduate survey of international students.

In an era of globalisation, studying in a community that consists of more than 130 different nationalities will prepare you to do business with people from around the world. And because our students are taught directly by academics with national and international reputations for their research, you learn in an environment that is rich in creativity and new ideas.

Roehampton is a small, friendly, collegiate community providing the perfect setting for your transition to London life. You will live, learn and socialise on a beautiful and historic campus in south-west London, with a range of excellent facilities on and off campus, with world-class museums, libraries and galleries never far away.

Visit our international web pages and

- find out when Roehampton staff will be in your country, and if your qualifications meet our entry requirements.
- watch videos of our international students talking about Roehampton.

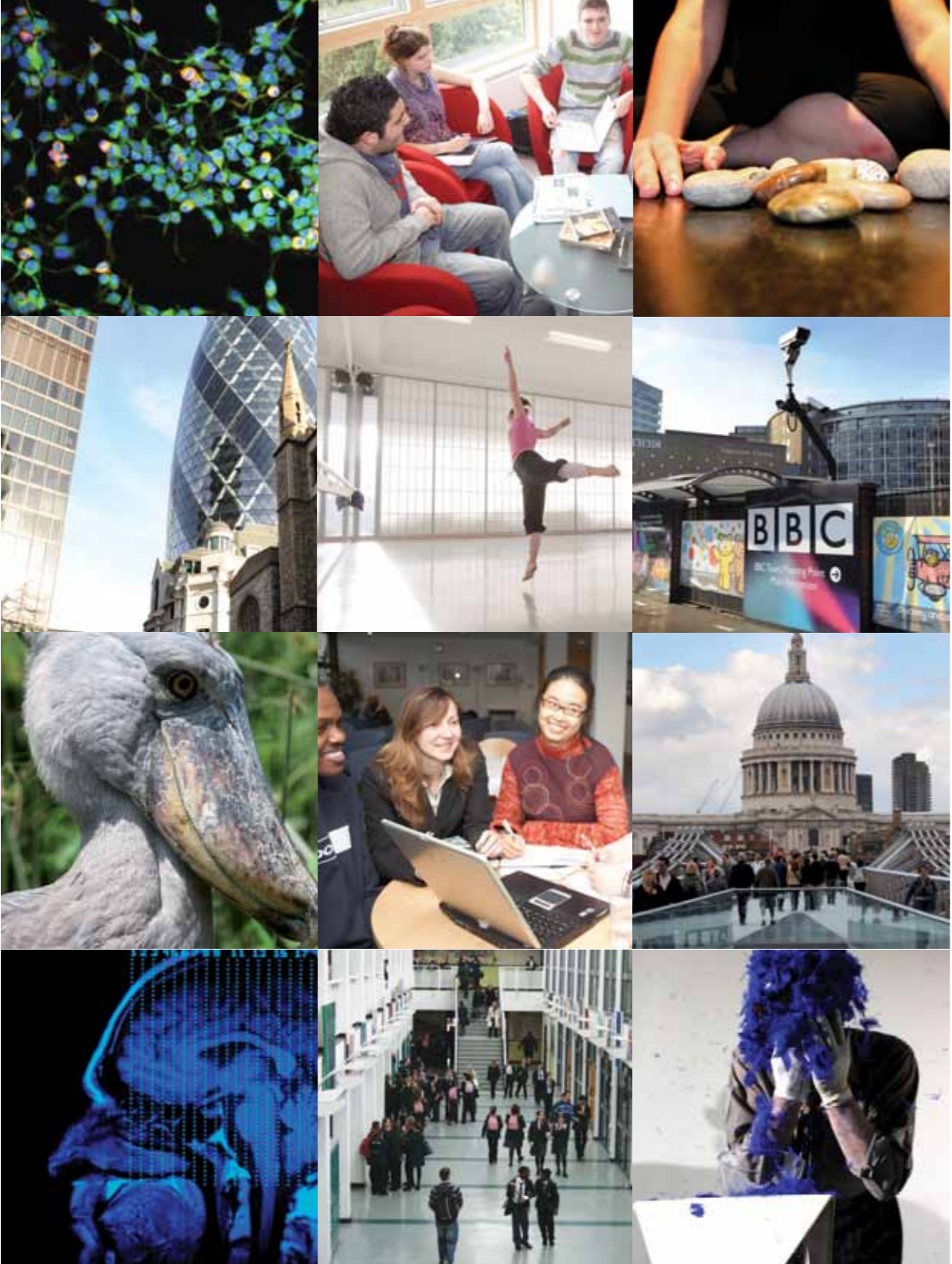
www.roehampton.ac.uk/international

London

One of the world's greatest knowledge capitals and hub of the creative industries, London boasts a wealth of internationally renowned facilities such as libraries and museums. The city is an international centre for film, music, sport, nightlife, theatre, fashion and art, offering something for all tastes and budgets.

London is also the jumping-off point for many European adventures. You can take the Eurostar to Paris for a weekend or hop on to any of the budget airlines operating out of London's airports and go almost anywhere in Europe.





Academic Departments



University of Roehampton

BUSINESS SCHOOL

The Business School offers a range of high-quality courses in Management, International Business and Marketing. A stunning location in south-west London allows students to engage with London's world-renowned business and commerce and not-for-profit and voluntary sectors, as well as the capital's rich cultural and historical heritage.

Students benefit from the real-world experience of Business School staff, who are involved in research and applied consultancy nationally and internationally. Strategic partnerships with professional bodies aim to provide every Business School graduate with a route to chartered professional status in addition to their degree.

Strong links with employers and industry, from companies such as Dell, Fosters, Haymarket, Microsoft, Santander and Waitrose as well as professional firms such as Deloitte's, Harvey Nash and Linklaters, have led to industry visits, live consultancy projects and guest speakers lecturing on campus.

The Centre for Organisational Research provides the focus for Business School research. The Centre seeks to contribute to the development of organisational theory by capitalising on the expertise of scholars from many disciplines who bring their knowledge and methods to a complementary understanding of complex issues. A doctoral degree in Business and Management is available – see the website for more details.



University of Roehampton

BUSINESS SCHOOL

MSc International Management

MSc International Management with Finance

MSc International Management with HRM

MSc International Management with Information Systems

MSc International Management with Marketing

UK/EU: £7,700 **International:** £10,600

The MSc/PGDip International Management portfolio aims to produce managers and leaders who can do business across time zones, cultures and languages. The courses offer you a solid grounding in key areas of business and management practice and allow those with particular interests in marketing, human resource management (HRM), finance or information systems to gain a named award in these areas. This suite of awards has the flexibility that allows you to change your area of specialisation within the first semester.

MSc Marketing

UK/EU: £7,700 **International:** £10,600

Studying Marketing at Roehampton gives you the edge in starting a career as a marketing professional. The School is fully accredited by the Chartered Institute of Marketing (CIM), and supported by major companies such as Waitrose, Sony Ericsson, IBM and Millward Brown. Undertaking a real marketing consultancy project with a client, you will gain invaluable hands-on experience.

MBA

UK/EU: £11,200 **International:** £13,000

The Roehampton MBA is designed to prepare those with a minimum of two years' experience of the workplace for the challenges of senior management in an international environment. You will gain a foundation in the key operational and functional areas of business and management, and your own personal development programme will include activities aimed at enhancing your managerial skills. The MBA is fully recognised by the Chartered Management Institute, and is one of the most competitively priced MBAs in London.

Student view:

“ The MSc in International Management at Roehampton provided an excellent grounding in general management skills and theory, including project management, e-commerce, international business environment and ethics. I found the course to be a good mix of practical and theoretical based assignments. These enhanced business knowledge but also placed us as individuals in high pressure situations. ”

— Alexander William Neil Harvey,
MSc International Management

University of Roehampton

BUSINESS SCHOOL



Online degrees with Laureate Online Education

The University of Roehampton is proud to launch a suite of online degrees in partnership with Laureate Online Education – a leading international provider of online higher education – for September 2012. Delivered fully online, the courses will be delivered in flexible, interactive virtual classrooms.

Discover a learning experience that fits your lifestyle with one of three management-focused courses.

MBA*

MSc Information Systems Management*

MSc Project Management*

Sign up for more information at
www.roehampton-online.com

**At final development stage*

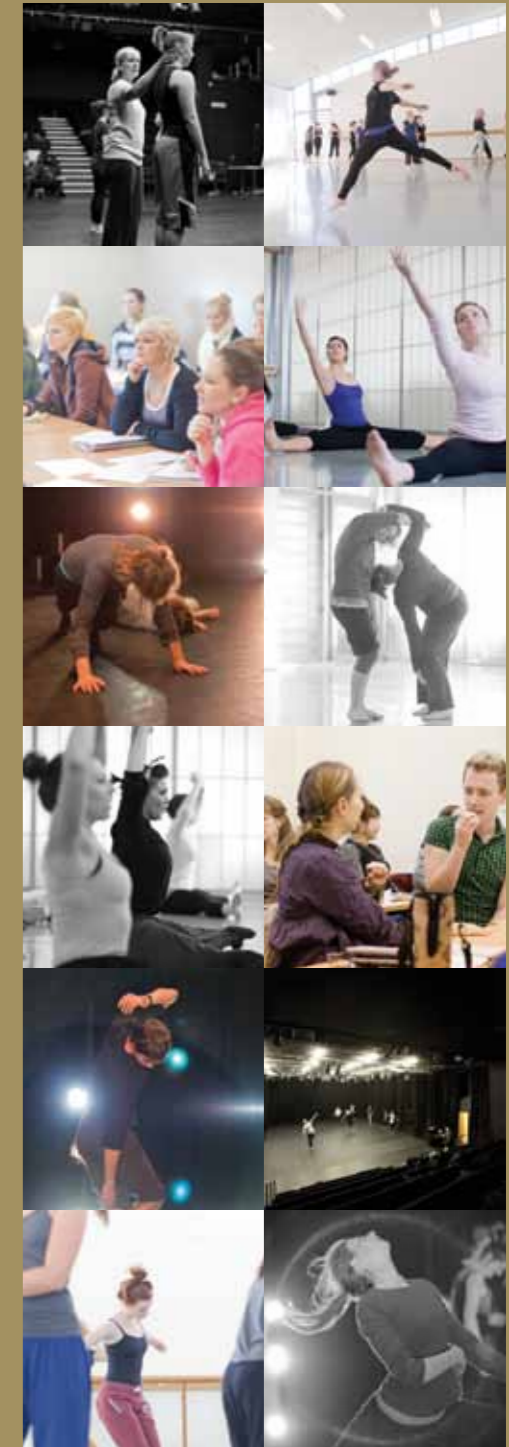
Department of
DANCE

Roehampton Dance is one of the largest and most vibrant university dance departments in the world. International dance academics, professionals and students come for wide-ranging courses and a reputation for research excellence.

The Department offers an unrivalled choice of interlinking masters courses, some of which are unique throughout the world. The postgraduate student body is diverse, with many students from overseas (including Asia, Europe and America), resulting in a lively and stimulating academic community. Flexible, core masters modules open new perspectives in dance thinking by drawing on the multidisciplinary expertise of teaching staff and invited guests, and by facilitating a rich exchange of ideas between students on different courses. The Centre for Dance Research and MPhil/PhD programme brings a surprising diversity of academics and artist-scholars from around the world to Roehampton, London. See the website for more details about the doctoral programme.

There are extensive studio facilities and the Michaelis Dance Theatre on campus, and proximity to London's dance organisations and venues makes Roehampton one of the world's top destinations for postgraduate study in dance.

Roehampton was rated number one in the UK for dance in the latest Research Assessment Exercise (2008).



Photos courtesy of: Simon Ellis, Alison Hartley, Francis Western-Smith and Benedict Johnson

Department of

DANCE

MA Ballet Studies

UK/EU: £5,500 **International:** £10,600

This course enables you to understand ballet in the context of current artistic and cultural debates. As the first course of its kind, Ballet Studies has played a radical role in shaping scholarly thinking in ballet.

MRes Choreography and Performance

UK/EU: £5,500 **International:** £10,600

Practice as research is a growing discipline for experienced choreographers and performers who want to deepen their artistic practice and strengthen their profile. Led by leading artist-scholars, this course blends studio practice with research and contemporary theoretical concerns. You will also retain the flexibility to continue your professional practice.

MFA Choreography

UK/EU: £7,200 **International:** £14,160; the cost per year is dependent on full- or part-time study. Cost per 10 credits: UK/EU: £420; International: £590. See website for full details.

Roehampton Dance's MFA course is a rare space for emerging choreographers to develop your artistic practice. Two years gives you time to nurture mature artistic, technical and performance skills and to experiment and build your portfolio. Throughout, you are backed up by mentorship and teaching from experienced staff in superb studios and a well-equipped theatre, with a creative community of peers and interaction with visiting artists.

Choreomundus: International Master in Dance Knowledge, Practice and Heritage

This unique course is offered in conjunction with three other universities in Norway, France and Hungary. You will investigate dance and other movement systems (ritual practices, martial arts, games and physical theatre) as Intangible Cultural Heritage (ICH).



Student view:

“ As a dancer and choreographer, I wanted to find a training ground where I had support and knowledge from artists and teachers as well as a place to experiment with new ideas and enhance my technical skills. The Faculty staff are constantly willing to take time to listen, give advice and nurture each student's individual needs and research interests. I would definitely recommend MFA Choreography to anyone interested in this area. ”

— Virginia Munday,
MFA Choreography

MA Community Dance

UK/EU: £5,500 **International:** £10,600

Community dance negotiates complex relationships between the creative, social and political. This course opens new perspectives if you work in community dance, and if you are interested in the field. It equips you to reflect on your experiences, develop your creative ideas and aid articulation of a critical perspective on practice and the wider dance ecology.

MA Dance Anthropology

UK/EU: £5,500 **International:** £10,600

Anthropology opens new perspectives on dance – and everything it tells us about being human. At Roehampton Dance, we broaden those horizons further with teaching staff whose expertise encompasses anthropology, ethnography, history, philosophy, analysis and contemporary dance practice – in diverse dance forms from Australian Aboriginal to Western theatre dance.

MA Global Dance: Politics, Identities & Institutions

(subject to validation)

UK/EU: £5,500 **International:** £10,600

The understanding of dance as a globalised cultural form is achieved through investigation of a range of dance practices and institutional relationships, developing the ability to engage with the political implications of the day-to-day experience of dance and policy developments. We examine complex interrelationships between dance, political policies, institutional practices and diverse identity constructions.

MA South Asian Dance Studies

UK/EU: £5,500 **International:** £10,600

Does migration change the cultural identity of dance traditions? What links South Asian dance in India, Britain, America and elsewhere? South Asian Dance Studies addresses these vital questions, whether you are an international performer, choreographer or teacher of South Asian dance.



Department of

DRAMA, THEATRE AND PERFORMANCE

The Department has one of the largest academic teams in the UK, with international reputations as performance makers, writers, visual artists, curators, critics and theoreticians. Interests range across contemporary, experimental and early modern theatre, applied theatre, performance art, sound art, creative writing, and performance as social action.

In the most recent (2008) UK universities' Research Assessment Exercise, over 60% of Drama staff research was rated world-leading or internationally significant. The Department as a whole was given the highest possible rating, which is indicative of international excellence.

Some of the world's leading performance-makers and academics are regular participants at events organised by the Department's Centre for Performance and Creative Exchange. See the website for more information about the research centre or the PhD Drama, Theatre and Performance.

Department of

DRAMA, THEATRE AND PERFORMANCE

MA/MRes Performance and Creative Research

UK/EU: £5,500 International: £10,600

This cutting-edge course provides the opportunity to engage in performance as an interdisciplinary and connective practice, spanning the fields of live art, theatre, dance, visual art, site-specific and lens-based practices. Exploring performance and research as twin paradigms for creative practice, you will take on the challenges of an inter-related set of practical methods and critical approaches, with an equal emphasis on collaborative and individual work.

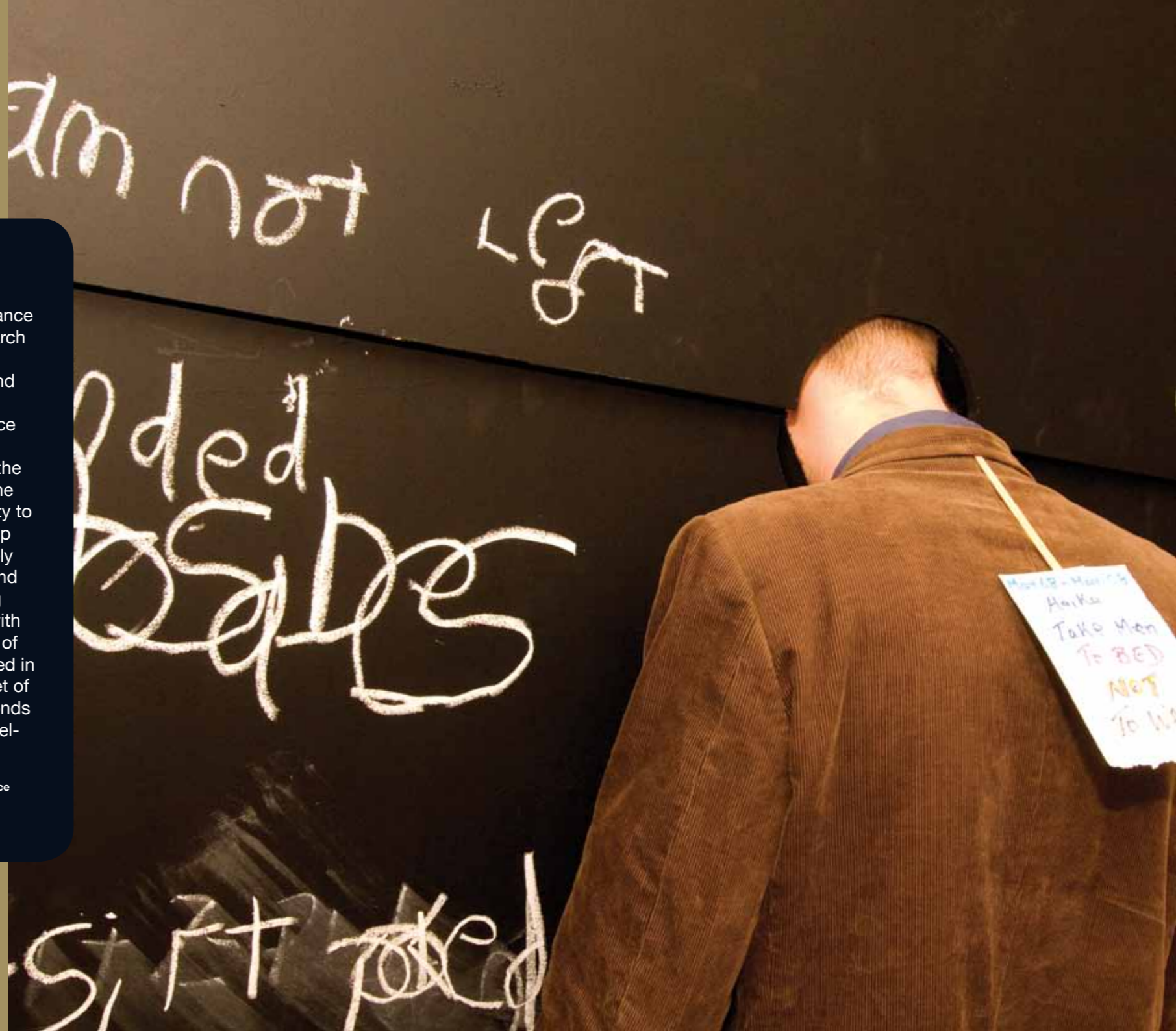
KEY POINTS

- Roehampton is close to the many world-class facilities of London, including: West End theatres, the National Theatre and the Globe Theatre.
- The University has five flexible studio spaces, including two theatres, and extensive library and technical facilities.
- Staff on the course were judged as conducting research that is “world-leading” and “internationally excellent” in the most recent national Research Assessment Exercise (2008).

Student view:

“ The MA in Performance and Creative Research allowed me to pull apart, reconsider and construct anew my performance practice and (performative) writing. Another of the main strengths of the course was its ability to pull together a group of people with widely different interests and views. This ‘coming together’ – linked with the ‘intensive’ style of timetabling – resulted in a hugely diverse set of works and close bonds being formed with fellow students. ”

— Tom Stone, MA Performance and Creative Research





Department of
EDUCATION

The Department of Education has a long history at Roehampton with the original mission of the four colleges within the University being concerned with the training of teachers.

Today the Department has an international reputation for high-quality teaching and research and it is positioned as one of the principal providers of Initial Teacher Education nationally and houses highly successful provision in the areas of Education Studies and Early Childhood Studies.

The Department offers a challenging, supportive and positive learning environment and as a result, the student experience is exceptional as are the career prospects for graduates. Facilities are bespoke and events provide additional opportunities for staff, students and partners to participate in stimulating lectures, workshops and conferences. Research is a strongly supported, central element in the Department: publication and dissemination to academic and professional communities are integral parts of the department's activity. There are several options for postgraduate study: Education, Education (Professional Doctorate), and Education (Professional Doctorate) International.

Based at Froebel College at the University of Roehampton, the Department is a large and vibrant 'community of practice' with staff and students working with partnership colleagues (from schools, colleges and local authorities) to improve education provision.

**MA Applied Music Studies
(pathways in Education, Psychology or
Special Educational Needs)**

UK/EU: £4,400 International: £10,600

This innovative course is the first of its type in the UK. You will gain a theoretical understanding of issues related to music education, music psychology and music and special educational needs. The course allows you to graduate with a named award in psychology or special educational needs, depending on your interest and specialism.



Department of

EDUCATION

MA Art, Craft and Design Education

UK/EU: £4,400 **International:** £10,600

This course provides opportunities for teachers, lecturers and other professionals to investigate and analyse the role of art, craft and design in education. Students bring to the course a wide variety of experiences in a range of educational contexts, from Foundation Stage settings through to primary and secondary schools and initial teacher education. By critically reflecting upon your profession, you will arrive at a broader knowledge and deeper understanding of your field.

MA Early Childhood Studies

UK/EU: £4,400 **International:** £10,600

Roehampton is internationally recognised for its work in the area of early childhood studies. With content that crosses different disciplinary and professional boundaries, this course aims to develop a deep understanding of the factors that promote the wellbeing of young children and their families. The course attracts students from many different professions (health, community, education) and is also of interest to suitably qualified parents as well as to Early Years professionals. There is much opportunity for cross-fertilisation of ideas, and to make contact with leading professionals who work within this field.

MA Education

UK/EU: £4,400 **International:** £10,600

The course allows you to either design a programme of study that reflects various curriculum areas and/or aspects of practice in education, leading to the MA Education, or to specialise in a particular area of interest through pursuing a named award. The course has been designed to provide flexible opportunities for practising professionals working in education.

MA Education Leadership and Management

UK/EU: £4,400 **International:** £10,600

This course is designed to offer professionals the opportunity to engage in the processes of systematic and analytical enquiry into the theories and practices of education leadership and management, with a view to improving your own practice. It is primarily aimed at all those in leadership, management and administrative roles and those aspiring to such roles across the whole range of educational settings and levels whether in the UK or other countries.

Student view:

“ I decided to take the course to help me towards my ambition of headship. Roehampton was recommended to me by colleagues, and when I applied, the course convenor was so kind and accommodating I didn't try anywhere else. It's an accessible course that is just about possible with a full-time job – the lectures on Saturdays are good, and I love the library and surroundings. ”

– Rachel Smith, MA Education Leadership and Management



MA English Education

UK/EU: £4,400 **International:** £10,600

This course provides opportunities for students, particularly primary and secondary teachers, to explore and analyse the centrality of English in Education. It covers the teaching and learning of English in all age phases, and modules offered cover a breadth of relevant areas.

Erasmus Mundus MA Special and Inclusive Education

This 16-month full-time course is taught in the UK, Norway and the Czech Republic. You spend equal time in each EU country completing taught modules in the partner institutions. By studying this course, you will gain a clear understanding of special and inclusive education across Europe and internationally, including the relevant legislation and range of policies affecting SIE.

MA Social Research Methods

UK/EU: £4,400 **International:** £10,600

The course is distinctive in providing students with an exciting opportunity to develop expertise in a range of both quantitative and qualitative research methods of data collection and analysis with a focus on their application to real-world issues.

MA Special and Inclusive Education

UK/EU: £4,400 **International:** £10,600

The concept of Special and Inclusive Education requires a new breed of professionals equipped with a secure understanding of special and inclusive practice while having due regard for the political, legislative and social inclusion agenda. This innovative course reflects on these key themes, and examines approaches used to meet personalised needs and to manage special and inclusive provision.

PGCE Primary (Foundation Stage and Key Stages 1 and 2)

UK/EU: £8,250

This course provides both an academic qualification (PGCE) and the recommendation for Qualified Teaching Status. You will benefit from extensive school-based experience – we have partnerships with over 500 schools and in the most recent survey, 96% of our students had gained teaching employment within six months of graduating. Graduates of this course are qualified to teach children across the full primary age range, but with a specialism in one of two age phases.

PGCE Secondary (Key Stage 3)

UK/EU: £8,250 **International:** £10,400

This course provides both an academic qualification (PGCE) and the recommendation for Qualified Teaching Status. You will benefit from extensive school-based experience – the Department has partnerships with over 200 schools. In the most recent survey, 96% of our students had gained teaching employment within six months of graduating. When applying for a place, you select a single subject of study which will qualify you to teach it in secondary schools.



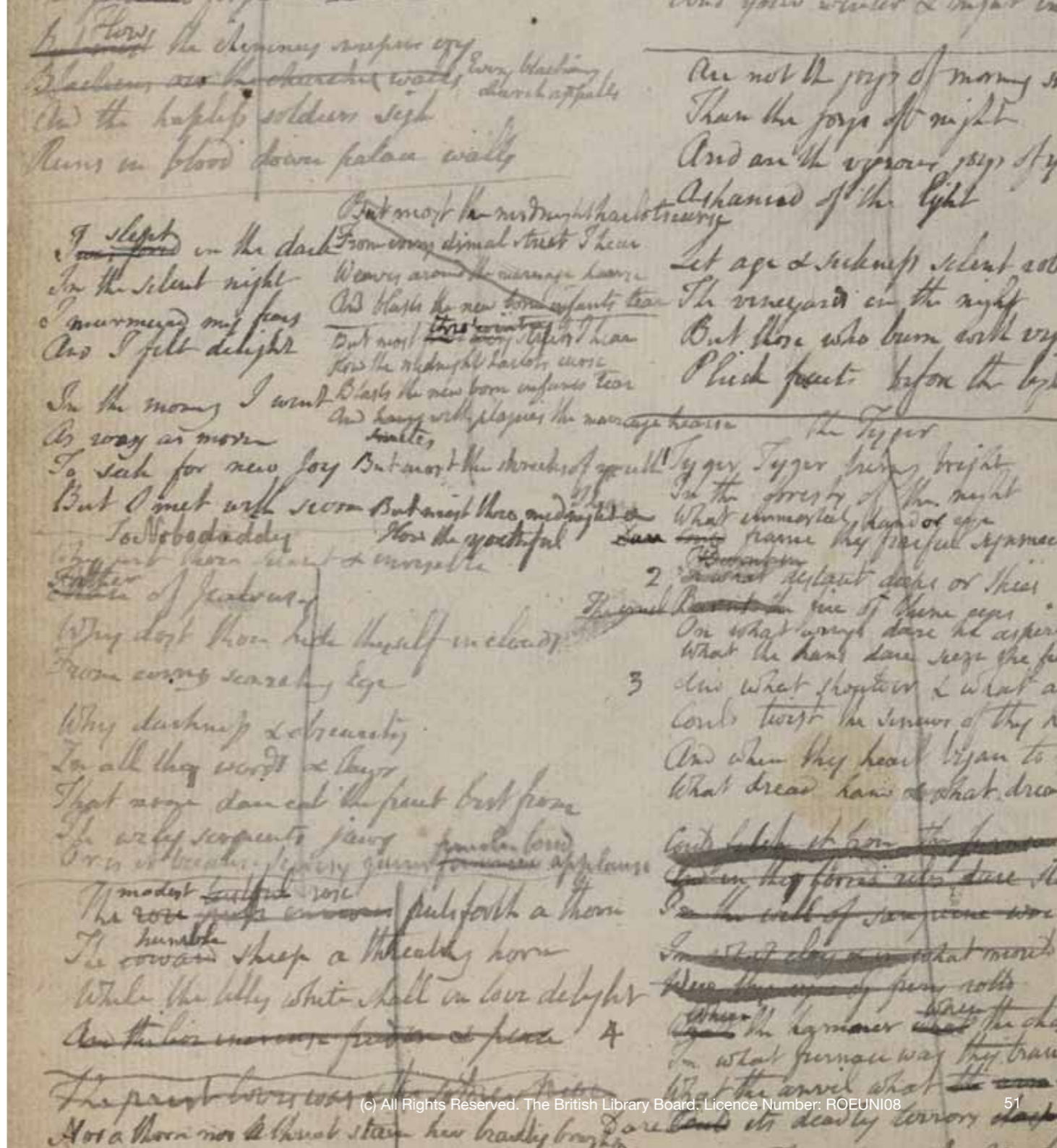
Department of

ENGLISH AND CREATIVE WRITING

The Department offers a selection of innovative courses and is proud of its commitment to excellent teaching. With an impressive research record, students can choose from a wide variety of modules taught by enthusiastic, high-profile staff.

Areas of expertise range from Blake to Bellow; from the history of Cupid to the social history of cake; from screenwriting to the experimental sonnet and stand-up comedy. The Department is also home to the National Centre for Research in Children's Literature (NCRCL); 'Rewrite' (the Centre for Research in Creative and Professional Writing), and Research Centres for Literature and Culture and for Romanticism. Doctoral programmes are available in Creative Writing, English Literature, and Children's Literature – see the website for more information.

Students are well placed to take advantage of the vibrant culture of literary London and are encouraged to explore the resources of the British Library and performance venues such as the Globe Theatre. Students can also enjoy a full programme of events organised by the Department, including research seminars, public lectures and readings, and regular conferences on children's literature, literary journalism, and Romanticism.



Department of

ENGLISH AND CREATIVE WRITING

MA Children's Literature MA Children's Literature (Distance Learning)

UK/EU: £4,400 International: £10,600

The course seeks to generate enquiry into current perceptions of children and the ways in which children's literature is used as a forum for transmitting and challenging dominant ideological constructions of society. The creative writing modules, 'Writing for a Child Audience' and 'Creative Dissertation' represent exciting additions to the programme, recognising the fact that many of our students have ambitions to write for children. This course can also be studied by distance learning.

MA Creative and Professional Writing

UK/EU: £5,500 International: £10,600

This course allows you to explore a particularly broad scope of writing disciplines. In addition to traditional creative writing pathways such as fiction and poetry, the course offers modules on writing for children, screenwriting and creative nonfiction (a very rare option in the UK). You improve your writing skills through detailed and specialised encounters with writing theory and practice that expand awareness of the context and the skills needed for contemporary writing.

MA Modern Literature and Culture

UK/EU: £4,400 International: £10,600

Concentrating on literature from the 18th century to the present day, this course considers a diverse range of canonical, popular and forgotten texts in relation to key aspects of the study of material culture. It draws on tutors' considerable research expertise in this area to create a lively atmosphere for investigation, dialogue and debate.

Student view:

“ After five years of trying to make it as a writer alone, I decided to do an MA at Roehampton. I was surprised to find myself drawn to creative nonfiction, and its particular sort of nosiness. What surprised me most was the ‘aftercare’. Even after graduating, the university supported our writing careers with advice on agents, competitions and conferences. Barely a year after graduation I have become a contributing editor of one magazine and commissioning editor of another. I also have my first novel in the hands of a reputable literary agent, whom I met on the course. ”

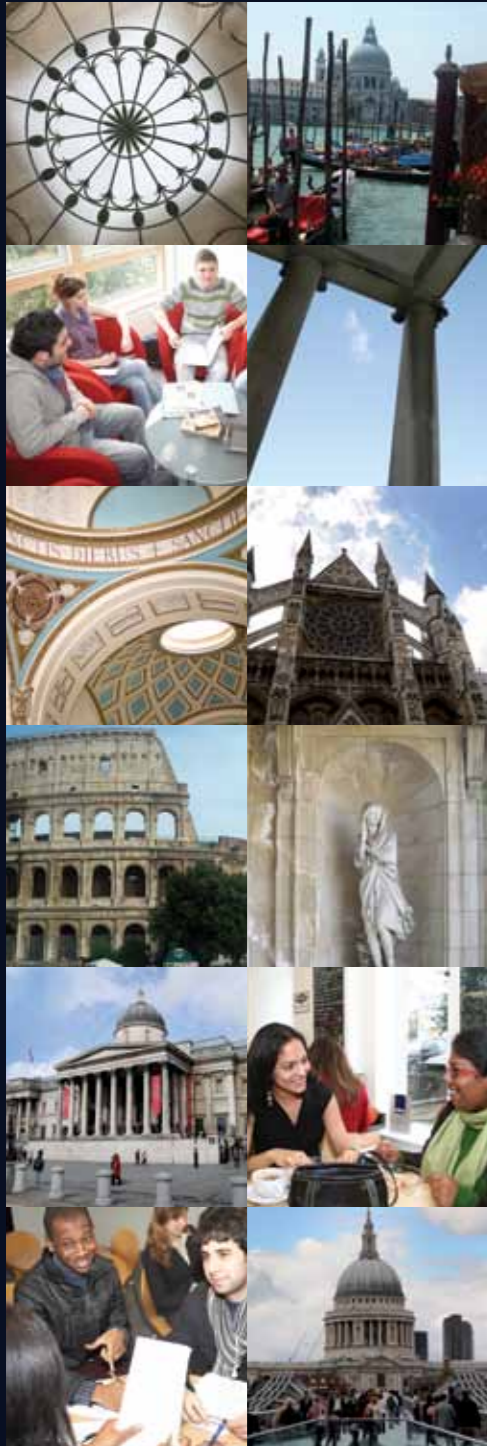
Tessa Ditner, MA Creative and Professional Writing



KEY POINTS

- Roehampton is home to the prestigious National Centre for Research in Children's Literature.
- Roehampton is close to London's many theatres, libraries, museums and archives. The University Library also has excellent resources for the study of English Literature.
- Roehampton has a rolling programme of fellowships – current holders are Jacqueline Wilson and Daljit Khan.

Professor Zachary Leader was awarded a prestigious Guggenheim Fellowship to work on his authorised biography of Saul Bellow. Professor Leader's book, *Life of Kingsley Amis (2006)*, was shortlisted for the Pulitzer Prize in Biography.



Department of

HUMANITIES

The Department's courses are united by their strong confidence in the value of studying the actions, cultures, thoughts and beliefs of humanity past and present. Staff have a commitment to excellence in teaching, and to being friendly and approachable.

The University's advantageous location allows you to engage with London's world-renowned cultural and historical heritage. Research-active staff include pioneering and influential scholars whose research, writing and public engagement have put Roehampton on the intellectual map.

The Department also has links with a number of local, national and international research centres, archives and museums, including the Centre for Health Tax Research and Queen Mary's Hospital archive and museum group. Research students are offered a supportive research environment with individual guidance from experienced supervisory teams. Find out more information on the website about the doctoral programmes in Classics, Theology and Religious Studies and History.



Department of

HUMANITIES

MA Christian Ministry

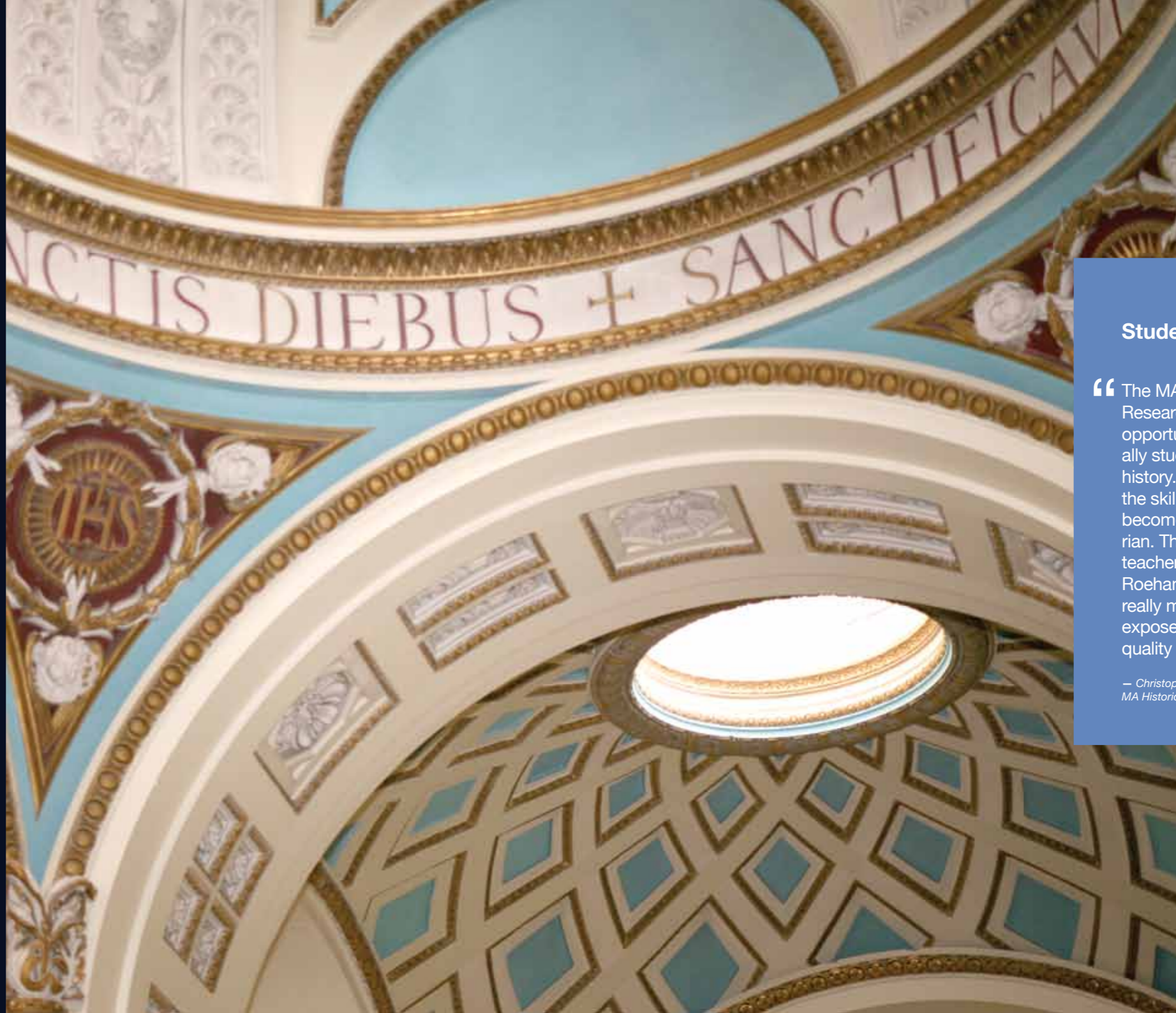
UK/EU: £4,400 International: £10,600

The aim of this course is to produce highly skilled and educated professionals capable of adapting to the needs of the Christian church in the 21st century. It is designed to meet the professional and vocational needs of those working in the Christian church in a contemporary context, in which an understanding of theological and biblical studies in relation to the needs and values of Christian ministry and practice is crucial.

MA Historical Research

UK/EU: £4,400 International: £10,600

The MA in Historical Research gives you the opportunity to study a range of approaches to the research and writing of history, with a specialised focus on recent theoretical and methodological developments and innovations. As a student on our MA, you will study with a team of experts in ancient, early modern and modern history. We offer specialised pathways in Social and Cultural History and Classical History, and a pathway in Local History and Archival Practice via Distance Learning for part-time students.



Student view:

“ The MA in Historical Research gives you the opportunity to actually study the study of history. It teaches you the skills you need to become a better historian. The standard of the teachers is really high at Roehampton. It's been really magnificent to be exposed to such high quality teaching. ”

— Christopher Lawrence,
MA Historical Research

Department of

LIFE SCIENCES

MSc Clinical Nutrition

UK/EU: £5,500 **International:** £10,600

This was the first MSc in Clinical Nutrition to be established in the UK and has gained an international reputation, attracting students from around the world. You will consider the patient's journey from birth to extreme age in the context of the metabolic response to injury, to surgery or to chronic disease. The course is designed for all members of nutrition support teams and is also suitable for students who wish to pursue clinically based nutrition research. This course can also be studied by distance learning.

MSc Health Sciences

UK/EU: £5,500 **International:** £10,600

This course is designed to provide a biopsychological perspective on the nature and study of human behaviour and health, with an emphasis on the contemporary developments in the social and biological sciences. The broad spectrum of biological approaches from molecular to evolutionary studies presents a diverse range of theories and methods for the study of human behaviour and health. You develop your research skills through the study of research methods, a research project and contact with active researchers.

MSc Obesity, Risks and Prevention

UK/EU: £5,500 **International:** £10,600

This was the first MSc course on obesity to be established in London. The course examines the problem of an excess of energy intake over energy expenditure from an integrative perspective: risk factors for obesity and risks associated with obesity are considered as well as strategies for reducing these risks. A solid scientific base on obesity risks as well as important prevention strategies will enable you to design interventions and research projects for combating obesity for all ages and different population groups.

MRes Primate Biology, Behaviour and Conservation

UK/EU: £5,500 **International:** £10,600

This course combines theoretical investigation with laboratory work and fieldwork on a range of primatology topics. You will carry out practical investigations in zoos and local habitats and learn how to interpret skeletal material. After the first semester the emphasis will be on independent study, with all students undertaking an in-depth piece of original research.

“ The course, to me, was the perfect combination of study topics and research. Most definitely having my MRes has helped my career. I did my thesis project at a primate sanctuary in Nigeria and was asked to come back as Research Project Coordinator for six months, so I immediately saw a direct benefit from my time at Roehampton. I feel very fortunate to have a job that I enjoy and am grateful to Roehampton for providing me with the qualifications needed to obtain it. ”

— Lisa Reamer, MRes Primate Biology, Behaviour and Conservation

The Sport Roehampton Performance Centre is the best laboratory of its type in London and includes a climatic chamber and automated motion-capture systems.

MSc Sport and Exercise Physiology

UK/EU: £5,500 **International:** £10,600

This innovative course offers you a means of studying sport and exercise physiology in an exciting, practical, yet academic way. It enables you to examine critically the theoretical bases of assessment and intervention methods, and to develop the knowledge and practical skills required to meet the specific needs of the client, be it optimal performance or improved health.

MSc/MRes Sport and Exercise Science

UK/EU: £5,500 **International:** £10,600

This successful course, taught since 1997, is a must for those excited by sport and exercise science. It is suitable for those looking to develop their skills and enter the profession as a consultant, researcher or lecturer. The course gives you the opportunity to examine critically the theoretical bases of assessment methods and their practical application within physiology, psychology and biomechanics.

MSc Sport Psychology

UK/EU: £4,400 **International:** £10,600

Sport psychology is the latest scientific field to be embraced by the high-performance, professional sporting world. This course has been designed, and is taught, by BASES-accredited sport psychologists. Consequently, it provides you with the knowledge and practical skills that are essential for successful practice as a consultant, lecturer or researcher.

MSc Stress and Health

UK/EU: £5,500 **International:** £10,600

Interest in stress is increasing in terms of scientific research as well as the rapidly growing commercial stress management sector. This course provides an academically respectable and science-based qualification in the study of stress, dealing specifically with the mechanisms by which psychological stress can induce illnesses and examining issues of measurement, prevalence and management. After the first semester the emphasis will be on independent study, with all students undertaking an in-depth piece of original research.



Department of

MEDIA, CULTURE AND LANGUAGE

The Department offers academically rigorous courses with a strong focus on research as well as practice.

With over 70% of academic staff research-active, the Department has a vibrant research culture. Five research centres are designed around academic courses, but with growing trans-disciplinary and interdisciplinary awareness: the Centre for Language Assessment Research (CLARe); Centre for Research in English Language and Linguistics (CRELL); Centre for Research in Film and Audiovisual Cultures (CRFAC); Centre for Research in Modern Literature and Culture; Centre for Research in Translation and Transcultural Studies; the Hispanic Research Centre (HRC). Doctoral degrees are available in English Language and Linguistics, Film and Television, Language Testing and Assessment, Media and Cultural Studies, and Modern Languages (French, Spanish and/or Translation).

Students will also benefit from the real-world experience of staff, who are not only undertaking high-quality research but are also involved in the production of works of national and international standing.



Department of

MEDIA, CULTURE AND LANGUAGE

MA Audiovisual Translation

UK/EU: £5,500 International: £10,600

The MA in Audiovisual Translation is an internationally recognised, leading course in its field. It aims to address the growing demand for translators with skills in translating audiovisual media and familiarises students with the socio-cultural, linguistic and technical dimensions that characterise this type of translation.

MA Media, Culture and Identity

UK/EU: £4,400 International: £10,600

This new and innovative course combines media and cultural studies in an interdisciplinary way. Drawing on critical theoretical methodologies from the broad spectrum of the humanities, this course is distinct in its exploration of the relationship between media, culture and identity. Many graduates find work in the media and cultural industries after graduating.

MA Specialised Translation

UK/EU: £5,500 International: £10,600

This course aims to address the growing demand for translators with skills in translating technical texts, and familiarises you with the sociocultural, linguistic and technical dimensions that characterise specialised, multilingual material. Through your work with dedicated software and high-tech, industry-standard equipment, you are equipped with the necessary skills to enter the professional market and the knowledge to pursue further research in this field. There is particular emphasis on localisation, for both software and videogames.

Student view:

“ The course is very interesting. You get a good idea of all Audiovisual Modes of transfer and get to pick some to delve into more thoroughly. Before that the studying of translation theories gave me a better understanding of the general translation process and was the base for delivering decent audiovisual translations. The tutors are always ready to help so I never felt lost, and a very big advantage is that you get a lot of guest lecturers from professionals working in the industry which is amazing and very important. ”

— Klaudia Szulik,
MA Audiovisual Translation





Department of

PSYCHOLOGY

The Department brings together world-leading research and teaching in all major areas of psychology, psychological therapies and the arts and play therapies. As one of the largest psychological training departments in the country, it provides opportunities for researchers in a range of disciplines to investigate an array of psychological problems and phenomena.

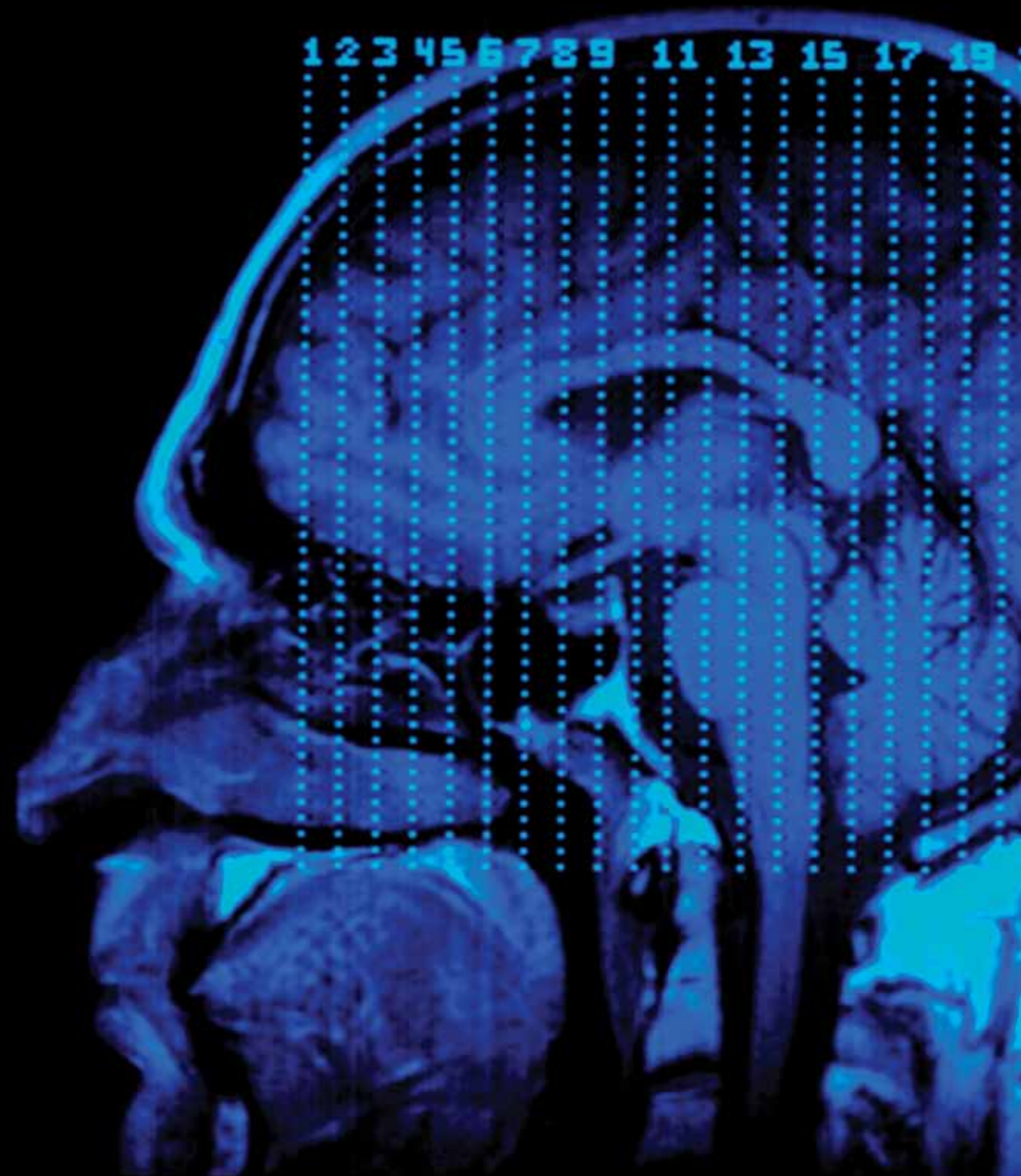
The Department has an active research community comprising of staff and research students, which is organised into four research centres: the Centre for Applied Research and Assessment in Child and Adolescent Wellbeing (CARACAW); the Centre for Research in Cognition, Emotion and Interaction (CRICEI); the Clinical and Health Psychology Research Centre (CHP); the Research Centre for Therapeutic Education (RCTE). Doctoral degrees are available in Arts and Play Therapies, Counselling Psychology, Forensic Psychology (Professional Doctorate), Psychology, and Psychotherapy.

The Department is committed to using the best current technology and as part of the CUBIC MRI consortium, owns and runs a share of a research-only MRI scanner. Its work attracts staff and students from around the world. Together they create a dynamic environment for both study and research, based at the stunning campus beside Richmond Park. There is also a range of specialist seminars, workshops and guest lectures.

MSc Applied Psychological Research

UK/EU: £4,400 **International:** £10,600

This course is distinctive in providing you with an opportunity to develop expertise in a range of both quantitative and qualitative research methods with a focus on their application to real-world issues. It also provides you with a sound basis for further training in doctoral-level research and the psychology professions.



Department of

PSYCHOLOGY

MA Art Psychotherapy

UK/EU: £7,700 **International:** £10,600; the cost per year is dependent on full- or part-time study. Cost per 10 credits: UK/EU: £420; International: £590. See website for full details.

Art psychotherapists work with a wide range of patients and clinical settings. This includes working with children and adolescents, people with mental illness, people with learning difficulties, the elderly, and people who have experienced trauma. This course will equip you with the skills, experience and confidence to work in frequently challenging but ultimately rewarding environments. The training includes theoretical perspectives within a psychodynamic framework, workshops and a training group as well as supervised clinical placements. Opportunities for further development of your identity as an artist are both valued and fostered.

MSc Attachment Studies

UK/EU: £5,500 **International:** £10,600

This course offers practical and theoretical training in Patricia Crittenden's Dynamic Maturational Model (DMM) of attachment. You will be able to learn two validated attachment assessments and receive an introduction to a broad range of assessments for use with children and adults. The course will suit clinicians and practitioners from the majority of health and social care disciplines, as well as students interested in attachment research at masters or PhD level.

MSc Counselling and Psychotherapy

UK/EU: £7,700 **International:** £10,600

This is one of the few university-based psychotherapy courses in the UK, and offers you a clear path to United Kingdom Council for Psychotherapy (UKCP) registration as a psychotherapeutic counsellor and/or psychotherapist. It is a proven, exciting and integrated educational process, with a range of modules which are at the cutting edge of developments nationally and internationally.

PsychD Counselling Psychology

The Practitioner Doctorate in Counselling Psychology confers eligibility to apply for registration with the Health Professions Council (HPC) as a Counselling Psychologist and the British Psychological Society (BPS) as a Chartered Counselling Psychologist. This course is well established, has an excellent reputation and is taught by experienced teachers, practitioners and researchers.



See our website for full details on fees:
www.roehampton.ac.uk/Finance/Postgraduate-Finance

MA Dance Movement Psychotherapy

UK/EU: £7,700 **International:** £10,600; the cost per year is dependent on full- or part-time study. Cost per 10 credits: UK/EU: £420; International: £590.

This uniquely interdisciplinary course integrates theoretical, experiential and clinical learning, preparing you to practice as a dance movement psychotherapist. Cutting-edge research cascades into teaching emphasising the social, biological and psychological construction of the moving body and meaning-making. On successful completion of the MA, students enter the Association of Dance Movement Psychotherapy UK professional register.

MA Dramatherapy

UK/EU: £7,700 **International:** £10,600; the cost per year is dependent on full- or part-time study. Cost per 10 credits: UK/EU: £420; International: £590.

This unique course provides opportunities for the theoretical, practical and clinical exploration of ritual and drama for healing and change. You are trained to facilitate an in-depth therapeutic process and devise therapeutic performances and workshops. You also undertake an original piece of research into dramatherapy practice. The course is approved by the Health Professions Council and leads to a nationally recognised professional qualification.

MA Integrative Counselling and Psychotherapy

UK/EU: £2,520 **International:** £3,540 – fees for Year 1 (220 credits)

This innovative course offers academic progression and professional training in the field of psychological therapy. In response to recent developments in the field, an integrative relational model is taught and you are encouraged to learn about different approaches to counselling and psychotherapy. The course includes all the training necessary for eligibility to apply for individual practitioner accreditation with the British Association for Counselling and Psychotherapy (BACP).

MA Music Therapy

UK/EU: £7,700 **International:** £10,600; the cost per year is dependent on full- or part-time study. Cost per 10 credits: UK/EU: £420; International: £590.

This course aims to help individuals to develop skills and self-understanding through a primarily non-verbal relationship in music. It is designed to train musicians to be therapists with the ability and flexibility to practice within the NHS, Social Services, education or private sector. The course leads to a qualification that confers eligibility for registration with the Health Professions Council, and which provides legal status for practice as a music therapist in the UK.

MA Play Therapy

UK/EU: £7,700 **International:** £10,600; the cost per year is dependent on full- or part-time study. Cost per 10 credits: UK/EU: £420; International: £590.

Based on a person-centred model of therapy, this course emphasises the use of play within a therapeutic relationship to facilitate therapeutic change. It prepares you for clinical practice, predominantly with children, as a professional therapist within the public and private sectors. The course leads to a qualification that entitles you for registration as a Full Member of the British Association of Play Therapists.



Department of
SOCIAL SCIENCE

Social science is a diverse, dynamic and challenging field, confronting some of the most pressing issues facing the global community today. This international perspective is reflected in the Department of Social Science at Roehampton, which brings together academics involved in teaching and international research in four distinct yet complementary areas: sociology, childhood and society, human rights and criminology.

Teaching is informed by the internationally recognised research carried out by staff in areas such as migration, multiculturalism, “honour” killings, hate crime, substance abuse and addiction, urban criminology, health policy, childhood development, and conflict and commemoration.

The Department is home to the Crucible Centre for Human Rights Research, the Centre for Research on Migration and Multiculturalism and the Social Governance Research Group. Roehampton was the first institution to be awarded the UK government’s Centre for Excellence in Human Rights Teaching and Learning, which it held from 2005 to 2010. This reflects Roehampton’s central commitment to the promotion of social justice through excellence in teaching learning and research. Information about the PhD in Social Science can be found on the website.

In addition to academic research, members of the Department of Social Science are also involved in consultancy and collaboration on behalf of, among others, the UK government and the European Union as well as international NGOs and statutory human rights bodies.



Department of
SOCIAL SCIENCE

MA Human Rights

UK/EU: £4,400 **International:** £10,600

This course is an exciting opportunity to explore the rich, often controversial and inter-disciplinary world of human rights. Assuming no detailed prior knowledge, you are provided with a suitably broad but challenging introduction to the subject with a wide range of module options depending on your interest. Close links with human rights practitioner organisations in London, coupled with an internationally renowned reputation for research in this field, means we are an ideal choice for those seeking careers in human rights campaigning or those preparing for postgraduate legal training in human rights law.

MA Human Rights and International Relations

UK/EU: £4,400 **International:** £10,600

From the effects of global terrorism and counter-terrorism campaigns, to the profound struggle for democratic freedoms and renewal sweeping the world, human rights are always central. Studying Human Rights and International Relations at Roehampton will enable you to understand the complexity of change in the global system. The course combines teaching from scholars of international excellence with unique opportunities for work experience and networking for future careers. The Crucible Human Rights Centre at Roehampton is a leader in teaching, learning and research.







Getting here

Travelling by public transport

The University of Roehampton is in zone three of the London Transport system.

National Rail

From Barnes station the main site (Digby Stuart, Froebel and Southlands) is a 10-minute walk and Whitelands is a 25-minute walk, or a short ride on the 72 or 265 buses. Trains go to Barnes from Clapham Junction and Waterloo in one direction and Kingston, Richmond, Staines and Windsor in the other direction.

Underground

From Hammersmith (District/Piccadilly/Hammersmith and City lines) take the 72 bus from stop K in the Lower Bus Station next to the shopping centre (above the Underground station). From Putney Bridge (District Line) take the 265 bus outside the station.

Bus

The University is well served by buses that link Roehampton to Hammersmith, Richmond, Kingston, Putney, Clapham Junction, Wimbledon and New Malden.

The 72, 265 and 493 buses stop next to the main site (at Queen Mary's Hospital) and close to Whitelands and Mount Clare (at the junction of Danebury Avenue).

The 170 and 430 buses stop on Danebury Avenue, which is very close to Whitelands and Mount Clare and a short walk from the main site.

Travelling by car

Please note, parking is limited on campus and in nearby streets. All University sites are on or near the A306 Roehampton Lane, between the A3 and the A205 South Circular (Upper Richmond Road).

Postcodes for satellite navigation systems are as follows:

Digby Stuart and Southlands College SW15 5PU
Froebel College SW15 5PJ
Whitelands College SW15 4JD.

Travelling by bicycle

The University can be easily reached by bike. There are cycle parking stands throughout the campus. The Transport for London online journey planner can be used to provide route maps to the University, see <http://journeyplanner.tfl.gov.uk>



If you require an audio, Braille or large-text version of this publication, please call the Enquiries Office on +44 (0)20 8392 3232. Please allow a minimum of 10 days for delivery.

The University of Roehampton is committed to being an equal opportunities education provider and will therefore make reasonable adjustments for disabled applicants and students.

Every effort has been made to ensure that the information given in this publication is accurate at the time of going to print and the University will use all reasonable efforts to deliver the courses as described. However, the University reserves the right, without notice, to withdraw or change the courses or course combinations included in this prospectus, to alter tuition fees, entry requirements, and the facilities or services provided, and cannot accept responsibility or liability for any errors, omissions, cancellations or alterations. Please check the website for up-to-date information.



www.roehampton.ac.uk
twitter.com/roehamptonuni ■ vimeo.com/roehampton ■ facebook.com/roehamptonuni



www.roehampton.ac.uk

twitter.com/roehamptonuni ■ vimeo.com/roehampton ■ facebook.com/roehampton.uni