

Make it yours  
Manchester  
School of  
Architecture

# Start building a reputation



Manchester  
Metropolitan  
University

**msa** Manchester  
School of Architecture



+44 (0)161 247 6969  
[www.msa.ac.uk](http://www.msa.ac.uk)

**Make it yours**

# Who we are

The Manchester School of Architecture (MSA) was established in 1996 as the result of an innovative collaboration between The University of Manchester and the Manchester Metropolitan University.

This amalgamation created one of the largest Architecture Schools in the UK and, by drawing together considerable resources and expertise in teaching and research in the two universities, it is able to offer a wide range of options for its staff and students. Indeed, the MSA has succeeded in gaining a reputation for the variety, vitality and quality of the work and achievements of its students.

This is not only reflected in appraisals by professional institutions (the Architects Registration Board (ARB) and the Royal Institute of British Architects (RIBA)), but is also demonstrated by the number and variety of prizes gained externally ranging from the RIBA student awards, through national and international students competitions for building design, to national competitions for computer-aided design.

As a member of the MSA, you are a student of both universities. This means that at the end of your time here you receive your degree jointly from both institutions and become a graduate of both.

The School offers professionally recognised degrees in Architecture at all levels. The programmes follow the standard pattern of recognised architectural education; namely, five years of full-time study divided between two periods of practical training. This pattern may evolve over the coming years, but currently it is usual to take the three year BA (Hons) Architecture followed by the two year Bachelor of Architecture (BArch) degree. These awards carry exemption from the ARB and the RIBA Part 1 and Part 2 examinations respectively.

## Contents

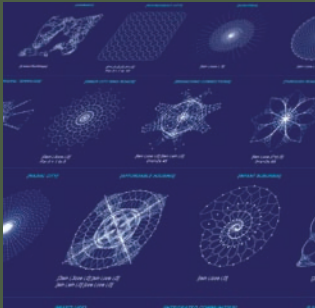
BA Architecture	08
BArch Bachelor of Architecture	12
MA Architecture and Urbanism	16
Postgraduate Research Opportunities	18







A NEW EASTERN PROSPECT IN THE WEST  
THE FUTURE PROSPECT IN ARCHITECTURE



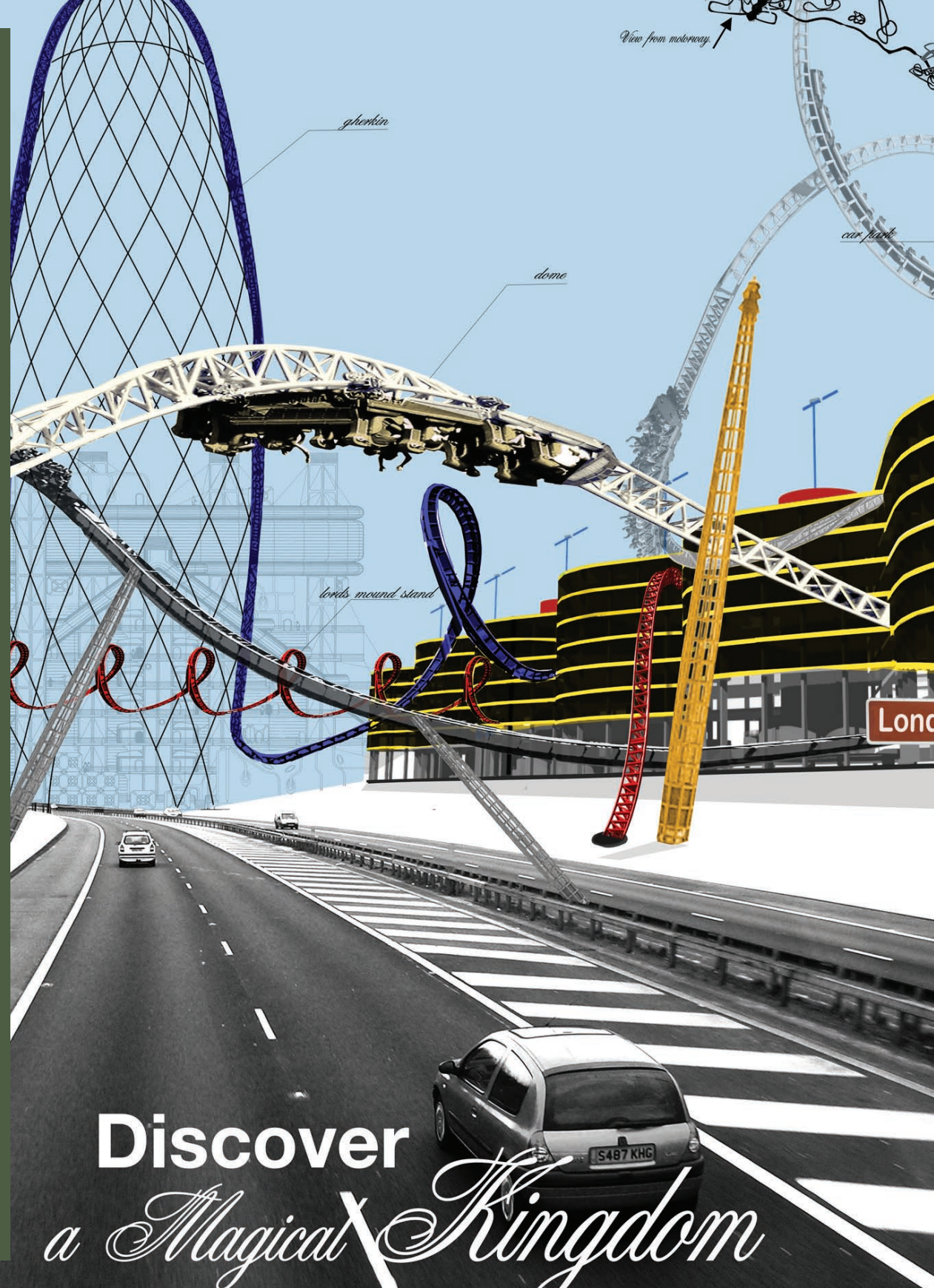
Between the two degrees you may go into practice for your first year of practical training. The second year of practical training is completed after you have finished your BArch. At the end of that year you are eligible to sit an examination, known as Part 3, which finally allows you to enter the profession. This examination in Professional Practice is run by the RIBA North West Region in association with the MSA and the two Liverpool schools of architecture, and is recognised by the professional bodies as one of the leading courses in the country.

At the MSA, project-based learning forms the basis of your education. From the start, you are involved in a variety of studio projects. These increase in complexity and length as you progress through the School. You are taught by full-time members of staff, who are either professional architects or members of allied professions and by architects from practice. Contact with architects from outside the School brings variety and realism to the teaching.

Teaching in the school is conducted within a research led learning culture. This is informed by staff clustered around research themes and is supported by staff from MMU and from MARC (Manchester Architectural Research Centre). Design teaching in BA (Hons) Architecture is informed by research agendas that are of enduring significance to the study of architecture following a first year experience providing a foundation in the subject.

Design teaching in the BArch degree is defined by the research themes and their relevance to contemporary exploration through architectural projects. Students benefit from this culture by pursuing their personal interests within a diverse framework of opportunity.

The School offers an MA in Architecture and Urbanism that may contribute to the attainment of professional recognition in addition to its value as an internationally recognised research award.



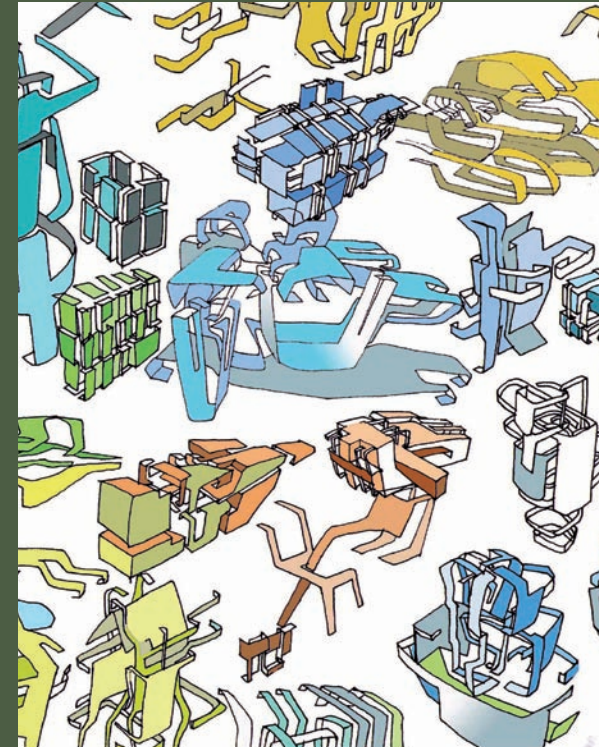
Discover

*a Magical Kingdom*

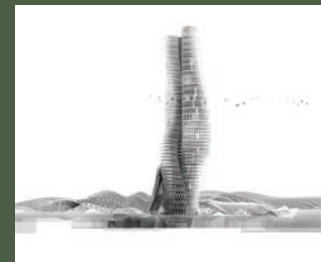




“The School is great and the staff are all fantastic. A lot more enjoyable than I thought from everyone saying how much work there would be... definitely the right choice.”

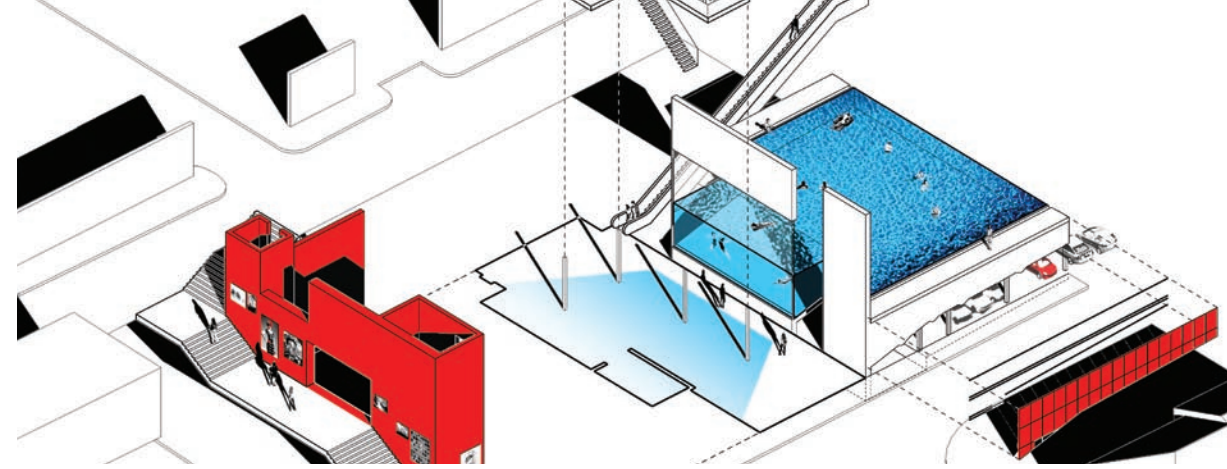


“I think that joining the course as a mature student has benefited me... I am more focussed and dedicated to achieving to the best of my ability... MSA is a great place to get your education, meet new friends and enjoy new experiences.”





# Architecture



**UCAS Code**  
K100

**Location**  
All Saints, Manchester/  
University of Manchester

**UCAS Tariff Points**  
A2 grades AAA  
General Studies not accepted.

**Specific Subjects**  
BTEC National Diploma DDD.  
GCSE grade C in English  
Language and Mathematics.  
A mixture of science/  
mathematics and humanities/  
arts subjects is preferred at A2.

**IB**  
36 points

**Specific Requirements**  
Drawing test.

**Assessment**  
Project reviews,  
assignments, essays and  
written examinations.

**Graduates**  
Graduates go on to work  
as architects for leading  
architectural and design  
practices. Alternatively,  
opportunities exist to  
undertake research for  
further postgraduate degrees.

**Website**  
[www.msa.ac.uk](http://www.msa.ac.uk)

## Facts

• The School of Architecture is rated 7th in the UK in The Times Good University Guide for 2009 • Strong links with architectural practice in the Northwest and architectural practitioners involved with the teaching • The course is jointly run by MMU and the University of Manchester. You will benefit from the considerable resources and expertise in teaching and research available in both institutions and receive an award from both institutions



## Study

Architecture education consists of five years of full-time study divided between two degrees. These are the three year BA (Hons) in Architecture followed by the two year BArch degree, which carry exemption from the Architects Registration Board (ARB) and the Royal Institute of British Architects (RIBA) Part 1 and Part 2 respectively. On graduation from the BA, you normally undertake a year of professional experience in an architectural office under the direction of the School. This first experience of practice prepares you for your architectural education in BArch.

**Year 1** gives you the opportunity to develop your architectural creative process through a series of studio design projects and skills workshops. The emphasis is on helping you begin to develop a way of thinking, working and designing as an individual designer with an understanding of human nature and spatial experience.

During **Year 2** you will further develop your design processes and critical thinking skills. Your skills will be tested through various projects using your own design solutions. You will gain an increased awareness of architecture within both rural and urban contexts.

By **Year 3** you will identify what contemporary architecture means to you. You will establish your theoretical position through a variety of projects leading to one major project where your design initiative and intuition is needed to formulate and communicate your architectural designs.

The Manchester Student Society of Architecture - MSSA - is the official group representing every student at the Manchester School of Architecture. It is run by students and works closely alongside tutors and lecturers across the MSA, MMU and the University of Manchester and is a member of the Students Unions at both academic institutions. Its principal aim is to improve the general well-being of students through both academic and social activities.

The MSSA runs a lecture series at the school, sponsored by local architecture practice BDP. This year has seen a range of talks given by national and internationally acclaimed practices such as Foster + Partners, Feilden Clegg Bradley and Marks Barfield as well as new, up and coming practices including Serie Architects, AOC and FAT. At the end of every academic year the MSSA hosts the annual Summer Ball. The MSSA can also provide support for students and is actively involved with continuing the already excellent links with local practices through the Manchester Society of Architects.

[www.msa.ac.uk/mssa](http://www.msa.ac.uk/mssa)

## Graduate Profile Kamlesh Bava



I am currently working as an Architectural Assistant for David Chipperfield Architects in Berlin.

After completing my BA (Hons) Architecture at MSA I worked for Wiel Arets Architects in Amsterdam for 6 months. The experience and skills gained here prepared me to move to another country and office.

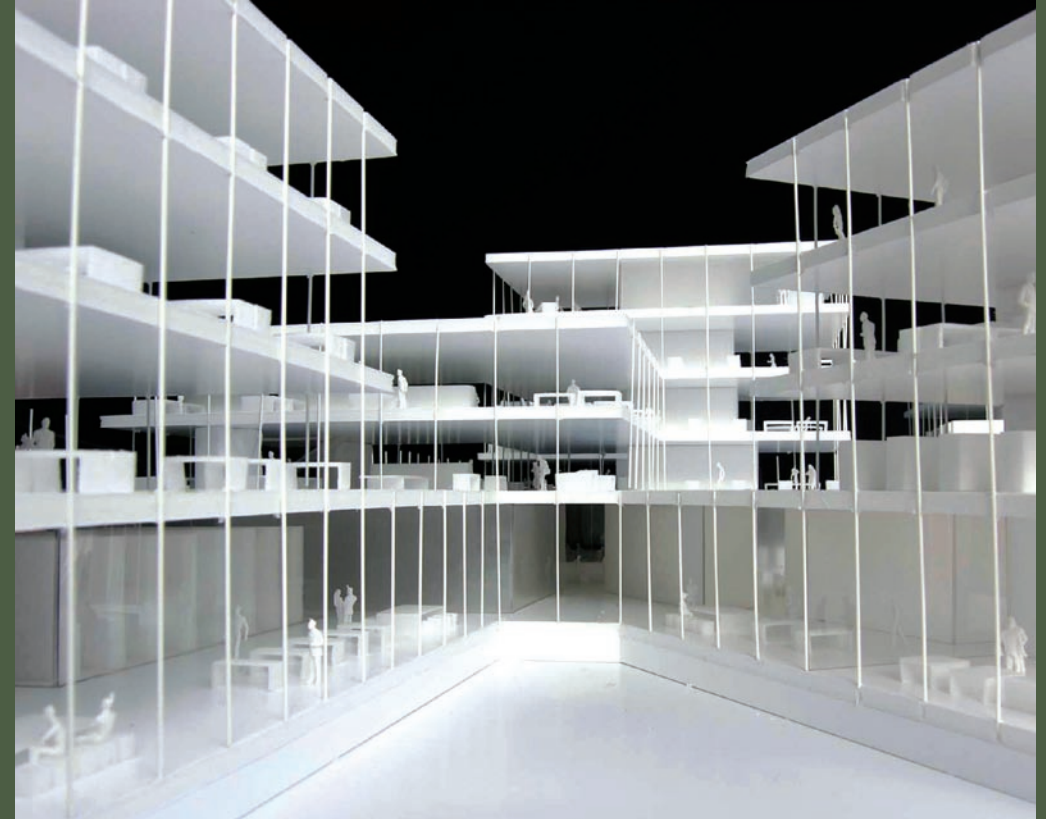
Architecture is more than just learning in the lecture theatre; the city itself is the subject and influence and that is what can really set it apart from other schools. It is the chance to be part of an urban environment with many diverse and passionate cultures rather than simply watching from the sidelines.

My experience at university was unforgettable. The work was incredibly involving and intense but it was balanced by a great sense of camaraderie and progression; it is often a labour of love.

The course at MSA does equip you well for the world of real life practice but beyond simply ticking boxes there is so much to gain. MSA allows you to follow your own path and fulfil your unique personal agenda, at the final show you see a range of work which has not been produced through a canonised system or to the style of individual tutors.

I would recommend future students to take full advantage of the opportunities around them as that will be the generator for your work, be involved in your context.

I have no idea what the future holds, I will continue to my Diploma next year but for me architecture is unlike many other careers. It is not a linear route and as the role of the Architect morphs and diversifies I hope to simply enjoy the ride and see where it takes me.





# Bachelor of Architecture

## Assessment

Project review, assignments, essays, and written examinations.

## Specific Requirements

An honours degree in architecture and ARB/RIBA Part 1. A 2:1 degree is a normal minimum requirement. Admission will normally be dependent on a successful application and interview.

## Graduates

Most graduates work as architects in private practice, though others work for local authorities, government organisations, commercial companies or contracting organisations, or for research agencies. Some graduates undertake research for higher degrees. Opportunities may also exist to work in Europe or overseas.

## Website

[www.msa.ac.uk](http://www.msa.ac.uk)

## Location

Manchester.

## Facts

• The School of Architecture is rated 7th in the UK in The Times Good University Guide for 2009 • The course offers a diverse selection of architectural studio projects based in a wide range of staff interests • This course satisfies the ARB/RIBA Criteria for Approval and thus provides exemption from their Part 2 • Following successful completion of this course, students may then take a further year of professional experience before sitting the Examination in Professional Practice. The examination together with two residential preparation programmes satisfies the ARB/RIBA Criteria for Approval and provides exemption from Part 3, enabling students to qualify for registration with ARB as an architect and join the RIBA • Opportunities for study exchange in Europe, America and Australia

The BArch programme is designed to encourage and support you to become independently creative, able to instigate your own projects and express your own architectural position and propositions. You develop these independent skills and propositions within the supportive and directed environment of studio units.

## Study

This course is a two year full-time or four year part-time degree for students who have completed the BA (Hons) Architecture course and the subsequent year in practice (during which students can maintain regular contact with the School). The course comprises design studio, history and theory, technology, and management and professional studies. The studio course is taught in small research groups called units. Each of these approaches architecture from a different specialised position, including architectural philosophy, urbanism, the historical city, and sustainability. The units' agendas and programmes are driven by staff research and responses to contemporary events and issues. At the beginning of each academic year, the student will select from one of the School's seven or eight units. A student will normally expect to spend a year studying with a particular unit.



The history and theory course is conducted through lectures and seminars. All students will write an 8-12,000-word dissertation to satisfy the requirements for this course. This is normally completed during the first year of the course. The technology component is taught through lectures, seminars and discussion with consultants. All students will be required to make a number of different submissions, including a written report, a powerpoint presentation, plus a detailed examination of a building proposal. The technology component is completed over the two years of the course. Professional Practice is supported by two lecture series. All students will be expected to make a written submission at the end of each series. Study tours take place each year related to the studio and there is the possibility for exchange under the Erasmus (Europe) and the American/Australian exchange programme in the first full-time year.

## Graduate Profile

### Laura Sanderson



I am currently working for a small architecture practice based in Manchester city centre, on a variety of projects from the early design stages through to completion.

My work at a-cube architects encompasses many different aspects, both individually and as part of a small design team, from design in the early stages through to technical design and site meetings for large projects and master planning tasks. Alongside my work at the practice I am employed as a part time First Year Tutor at the MSA.

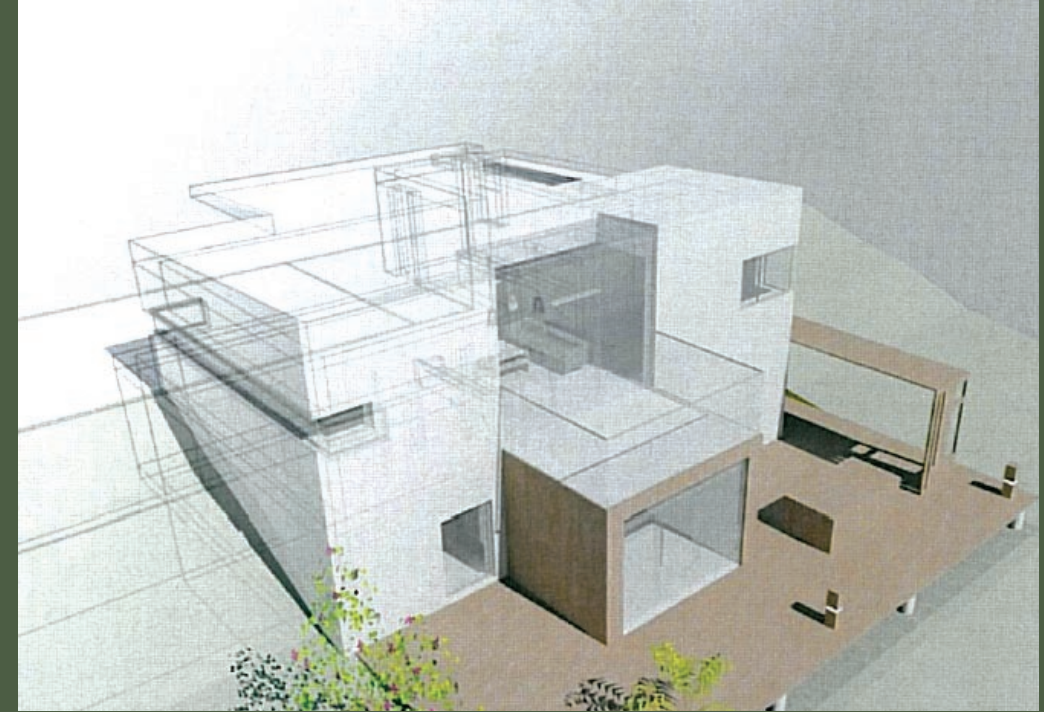
The degree in Architecture provided me with all the skills and experience necessary to work in an architectural practice, providing skills from complex design solutions to technical detailing and practice management.

MSA also run a 'Teaching Assistant' programme in the sixth year of study which allows students to work as an assistant in tutorials. This programme provided me with the necessary experience to apply for a job as a part time tutor.

I am currently in the process of studying towards RIBA Part III which is a work based course in the professional qualification of architecture. This one-year course provides all the knowledge required to become a member of the Royal Institute of British Architects.

The course in Architecture is challenging but rewarding! It encompasses a number of projects ranging in scale from small interventions through to complex buildings, communities and masterplanning.

University is a complex and challenging time which is rewarding both academically and personally. It is a time for developing different aspects of yourself and being able to confront your own ideas and boundaries, however it is a



fantastic opportunity to meet new people and experience a new city!

Manchester is a truly vibrant city which is both cultural and contemporary. The city is hugely diverse yet compact and is full of fantastic examples of architecture from large scale developments to smaller thresholds, details and public art.

My aspiration in architecture is to create beautiful functional spaces, from the smallest interiors to large community and master planning designs.

Remember that university is about your own journey of development and to enjoy it by exploring the city and meeting new people as well as academically challenging yourself. University is definitely about balance and learning to balance yourself academically and personally is certainly the biggest challenge that you will undertake.

In terms of architecture you can never underestimate the power of discussing your ideas with your peers, both within the architecture department and beyond. Always be as experimental as possible and open your mind to new ideas and theories.

[www.a-cube.biz](http://www.a-cube.biz)





MA  
1FT/2PT

# Architecture and Urbanism

## Specific Requirements

BA (Hons)/BSc (Hons) at least 2.2 or equivalent. The course is also open to practice based entry routes.

## Assessment

Self, peer and tutor based assessment methods.

## Graduates

Graduates have gone on to work with leading architectural, urbanism and town planning practices both nationally and internationally including: Asymptote Architecture (New York), Zaha Hadid Architects (London), Hamzah Yeang Workshop Architects (London/Malaysia), Maccreanor Lavington Architects (London/Rotterdam) and Eisenman Architects (New York).

## Website

[www.msa.ac.uk](http://www.msa.ac.uk)

## Facts

- Jointly accredited by Manchester Metropolitan University and the University of Manchester with cross-disciplinary connections between Manchester School of Architecture, the School of Environment and Development (UoM) and MIRIAD (MMU)
- Can act as approved prior learning for the MSA RIBA Part 2 accredited BArch in certain circumstances
- An internationally based course that actively disseminates students' thesis work through conferences, exhibitions, competitions and publications

## Study

Over 50% of the world's six billion people now live in cities. By 2050 this will have passed 80%; the future is urban. Taking an international perspective, this programme explores innovative approaches to design and intervention in the city, investigating relationships between built form, space, culture, developmental processes and sustainability, within an interdisciplinary, project based dialogue. The programme covers research methodologies, cities and urban ideologies and urban futures.

In addition you will work in studios in groupings with complementary research interests led by a tutor with expertise in the area. In Studio A you will begin to engage directly with a chosen research subject area/proposition. In Studio B you will develop individual research propositions, completing a literature survey, gathering data and formulating an original approach in thinking and/or practice. In Studio C you will synthesise the thesis project culminating in the production of a leading-edge proposition. Finally, in Studio D you will present and contextualise your thesis as an outstanding piece of work suitable for academic and/or public consumption.





Make it yours

# Postgraduate Research Opportunities

Research at the Manchester School of Architecture (MSA) draws upon a diverse research community stretching across the disciplines of art and design through MIRIAD (Manchester Institute for Research and Innovation in Art and Design) at the Manchester Metropolitan University, and the humanities and social sciences through MARC (Manchester Architecture Research Centre) at the University of Manchester. This unique range of interests and expertise spans across theory, design, policy and practice.



In a period subject to rapid changes in the social and economic spheres all activities at the MSA constitute an interdisciplinary project in which competing conceptions of design and development are brought into critical dialogue, particularly in relation to the city. Central to this dialogue is the pursuit of research in which the staff and students of the School aim to further the understanding of the aesthetic significance of architecture and design, the co-evolution of design and urban development strategies, and the widely felt social, economic and environmental processes shaping buildings, neighbourhoods, public spaces and cities. Traditional study routes for MA, MPhil and PhD are complemented by the newly validated PhD by Practice route available at MMU.

Postgraduate research activity falls into three broad internationally focused and interlinked themes:

- Architectural History,  
Theory and Conservation**
- Urbanism**
- Sustainable Design Strategies**





Recent and ongoing doctoral and masters projects within these three themes are as follows:

#### Architectural History, Theory and Conservation

- Conservation and Continuity in historic walled cities: A case study of Famagusta/Gazimagusa
- Unencumbered Access within Historic Urban Areas
- Methodist Central Halls as Sacred Places
- Relearning Architecture: Sense, Time, Place and Technology
- From Ephemeral Design to Eternal Monument: The Exposition of the Portuguese World 1940
- Faith and Rationality: Jack Coia and the impact of modern ecclesiastical architecture in twentieth century Scotland and Europe
- Lee House, Great Bridgewater Street, Manchester (1928-31): An example of the influence of the American skyscraper on British commercial architecture during the 1920s

#### Urbanism

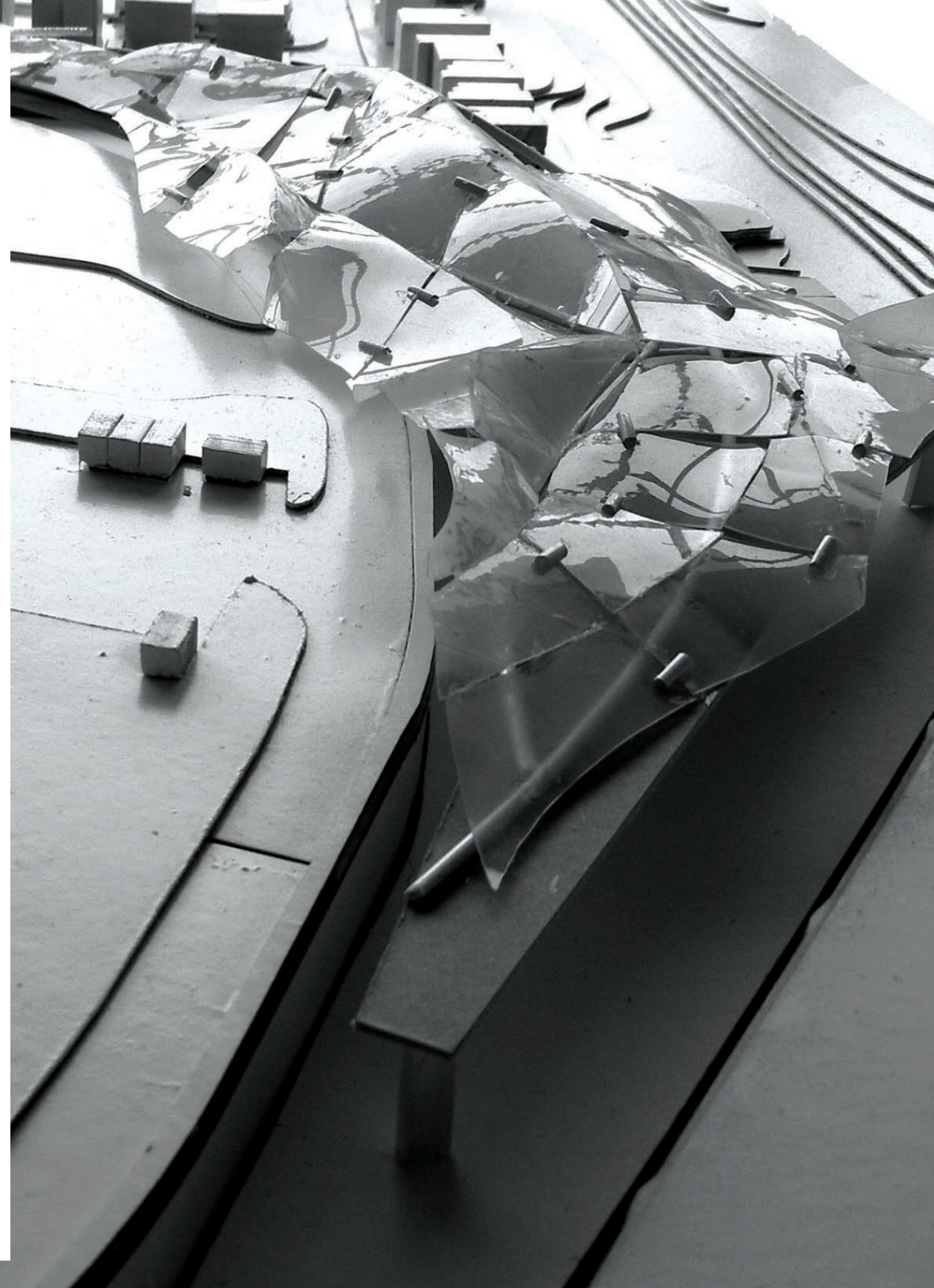
- Resonances of the roji: A study of urban streets as mediator of everyday life in contemporary Tokyo, Japan
- Soundscapes within Urban Green Spaces: Their restorative value
- The morphology of the urban grid in Egypt: The case of Assiut City
- Cinesensory: A filmic model for analysis for urban sensorial and everyday city
- New Policy – New Morphology? The spatial impact of housing policy in Liverpool
- How has Manhattan's recent architectural culture affected its growth, development and current day form?

#### Sustainable Design Strategies

- Biomimetic Phenogenesis: Towards a biomimetic architecture
- Sustaining Buildings: Designers as intermediaries for Carbon Neutral Futures
- Investigation into participatory design and self-build
- Eco-symbiosis (mutualism) between photosynthetic skyscrapers and eco-neighbourhoods for thermal comfort in multicultural hot-humid neighbourhoods
- Rhetoric and Realities: Modelling practices as mediators of design in sustainable architectural decision-making

For more information and to discuss possibilities in research at the Manchester School of Architecture please contact:

Eamonn Canniffe [e.canniffe@mmu.ac.uk](mailto:e.canniffe@mmu.ac.uk)  
Albena Yaneva [albena.yaneva@manchester.ac.uk](mailto:albena.yaneva@manchester.ac.uk)





Manchester School of Architecture is part of the Faculty of Art and Design at Manchester Metropolitan University. Our Faculty is one of the largest providers of art and design courses in the UK. With a distinguished history dating back 170 years we offer a wide range of art, design, theatre and architecture courses to over 3500 students.

### **The Faculty of Art and Design is made up of three Schools and a Research Institute:**

#### **Manchester School of Architecture**

A joint school between Manchester Metropolitan University and the University of Manchester and is validated by the Royal Institute of British Architects (RIBA) and accredited by Architects Registration Board (ARB) [www.msa.ac.uk](http://www.msa.ac.uk)

#### **Manchester School of Theatre**

Accredited by the National Council of Drama Training (NCDT) and is a member of the Conference of Drama Schools [www.theatre.mmu.ac.uk](http://www.theatre.mmu.ac.uk)

#### **Manchester School of Art**

Incorporating the Department of Art & Media, the Department of Design and the Department of History of Art and Design [www.art.mmu.ac.uk](http://www.art.mmu.ac.uk)

#### **Manchester Institute for Research and Innovation in Art and Design (MIRIAD)**

The postgraduate research and enterprise centre, supporting the Faculty of Art and Design, MMU Cheshire and Hollings Faculty [www.miriad.mmu.ac.uk](http://www.miriad.mmu.ac.uk)

This book is part of a set of 5, the other 4 books being The Manchester School of Art, The Manchester School of Theatre, Postgraduate: Art and Design and a Manchester Overview (giving general information including living in Manchester, how to apply, international students and fees).

If you are interested in courses from our other schools please visit [www.artdes.mmu.ac.uk/getmybook](http://www.artdes.mmu.ac.uk/getmybook) to find out how to order copies.

Special thanks to all the students, staff and photographers whose work is featured in this publication. The copyright for this work remains with the originators.

The University will use all reasonable endeavours to deliver programmes in accordance with the descriptions set out in this prospectus and other promotional material. However, the University reserves the right to make variations to the contents or methods of delivery of programmes, to discontinue programmes, if such action is reasonably considered necessary by the University. If the University discontinues any programme, it will use its reasonable endeavours to provide a suitable alternative programme.

Please note that by entering into a student contract with MMU you will be consenting to MMU using any intellectual property rights created by you during your studentship at MMU for any purposes including, but not limited to, marketing.

## Contact us

Manchester School of Architecture  
Chatham Building  
Cavendish Street  
Manchester M15 6BR

To download a site map and to find out how to get here please visit [www.mmu.ac.uk/travel/allsaints](http://www.mmu.ac.uk/travel/allsaints)

For general course enquiries please call +44 (0)161 247 6969 or email [courses@mmu.ac.uk](mailto:courses@mmu.ac.uk)