



2012
ENTRY

International
**STUDENTS
GUIDE**



Southampton
SOLENT
University

Facts and figures



Over **150** years
of history

The University achieved **4/5**
for teaching in the 2010
National Student Survey



19,151 students

3,726 non-UK students

105 nationalities

58% men

42% women

1,344 members of staff



£22.5 million
campus investment over the
last four years

£3.4 million
awarded in student financial
support for the academic
year 2009/10



Three campuses

Three faculties

200,000 books in
the library

7,860 audio-visual items

1,685 journals
(including 1,190 e-journals)

3,700 e-books

Over **770** study spaces
in the library



Libraries open over **90** hours
per week in term-time

Over **1,050**
networked computers for
student use across the University





Working **together** for you

Southampton Solent University is a vibrant and enterprising modern university which places the student experience and a commitment to preparing graduates for successful careers at the heart of its mission. It welcomes all who are able to benefit from the type of higher education it offers.

The University sees itself as a friendly, open and inclusive place where ordinary people can achieve extraordinary things. We offer fairness, integrity and excellent value.

If you decide to choose us for your time at university, we look forward to welcoming you.



Contents

The city	2
Studying at Solent	4
Course guide	6
Entry requirements	10
Fees	11
Financial support	12
English language programmes	14
Accommodation	16
Facilities	18
Support	20
Student visas	21
Working in the UK	22
Find us	23
Term date	24
Contact us	25

Learning at the heart of a **great city**

We're located in the very heart of the cultural and commercial capital of the South. The city of Southampton rarely disappoints, and here's why...

A global village

The city has grown dramatically into a lively and cosmopolitan hub of culture, entertainment, nightlife and shopping. Just over an hour from London, a short distance from Bournemouth, Portsmouth and Winchester, its location also makes it easy to travel to Europe and beyond, either by ferry or from the city's nearby airport.

Cultural revolution

Southampton is investing £175 million in a new 'cultural quarter' located just minutes from the main campus, which is set to house state-of-the-art auditoriums, gallery space and studios. With some of the best UK art galleries outside London, two major theatres, three cinemas and countless concerts, festivals and events, there's certainly enough to keep even the most avid culture vulture satisfied.

In my view

"The best bit about being at Uni in Southampton is that everything is within walking distance. I adjusted to living in this city really well because the people here are very friendly and co-operative."

Anam Fatima, BA (Hons) Business Management



First port of call

The city has a strong sense of history and heritage. *The Mayflower* set sail from here for the New World in 1520. Medieval walls nestle among modern developments to create a unique waterfront environment. It's famous for its global maritime role, primarily as a major trading port, but also as home to some of today's greatest ocean liners, container ships, yachts and power boats.

Economic hub

This is the city which was the birthplace of the Spitfire and fibre optics, and continues to be at the forefront of commercial innovation. Its diverse economy includes the head offices and regional centres for B&Q, Carnival, Ford, HSBC, Merck and Ordnance Survey. With more than 7,000 businesses operating here, it's not surprising that nearly 2,000 of the city's graduates remain to seek career opportunities every year.

Park life

Southampton's parks and 300-acre common make it one of the greenest cities in southern England. You'll soon discover that there's nowhere better for a kick-about or for stretching out in the sun on a lazy summer day.

Sporting chance

Mad about sport? You can indulge your passion at a variety of spectacular sporting venues that play host to professional football, major sailing events, and county and test match cricket.

The Rose Bowl is home to Hampshire County Cricket Club, while Southampton Football Club play their matches at St Mary's Stadium.

Sea for yourself

When you want a change of scenery, it's only a short drive to golden beaches along miles of stunning coastline, and acres of open woodland in the New Forest to explore on foot, bike or horseback.



Some city facts

Shopping centres that put Southampton into the top 20 best retail destinations in the UK, with West Quay alone housing over 90 stores.

Theatres and cinemas performing everything from West End shows to Shakespearian dramas and screening a wide range of titles, from the latest blockbusters to European classics.

Art galleries housing something for everyone, from ancient culture to cutting-edge designs.

Museums featuring varied exhibits including archaeology, maritime and aviation. The new Sea City Museum is due to open in April 2012.

The New Forest National Park, just a few miles away, where you can find peace and tranquillity in one of the largest areas of green land in the UK.

Parks and green spaces that make Southampton one of the greenest cities in the South of England.

Landmarks and historic sites including the Titanic memorials, Bargate, Mayflower memorial, the old walls and Medieval Merchant's House.

Sporting venues including outdoor ski slopes, Olympic-size swimming pool and diving facilities, running track, climbing wall, water sports, sports centres and even crazy golf centres.

The **largest city** in the South-East outside of London

Southampton covers an area of **51.81km²**

Population of over **230,000** people

Student population of over **40,000**

20% of the population are aged **16–24**

£800 million worth of new developments under way or about to start in the city

£175 million investment in a new cultural quarter

180 pubs, bars and nightclubs

For any further information about Southampton Solent University or more detailed course information go to:
www.solent.ac.uk

Thinking of coming to **study with us** in 2012?

You can take your pick from more than 200 undergraduate degrees and almost 40 Higher National Diplomas and Foundation degrees, together with a wide variety of taught and research postgraduate degrees, professional education and short courses.

Undergraduate level

Foundation programmes – 1 year, leading to a Bachelor degree.

Higher National Diplomas (HND) – 2 years, leading to a Bachelor degree or a Bachelor top-up degree.

Bachelor degrees – 3 or 4 years, Bachelor of Arts (BA), Bachelor of Science (BSc), Bachelor of Engineering (BEng), and Bachelor of Law (LLB).

Bachelor top-up degrees – 1 year, final year of a Bachelor degree for students who have completed the equivalent of a British HND.

Taught postgraduate level

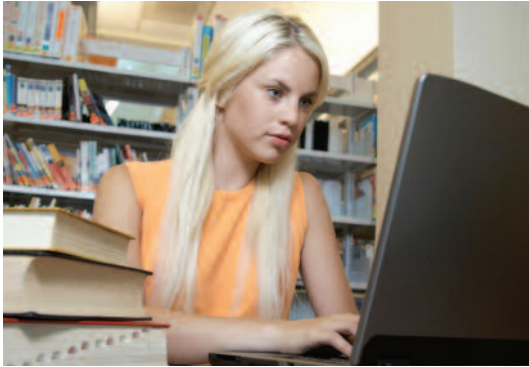
Postgraduate Diploma – 1 year.

Master's degrees – 1 to 1½ years, Master of Arts (MA), Master of Science (MSc), Master of Business Administration (MBA), and Master of Law (LLM).

Research postgraduate level

Master of Philosophy degrees – 2 years.

PhD degrees – 3 years.



Study abroad programme

Southampton Solent University's Study Abroad Programme allows international students who are enrolled at a university outside the UK where there is no bilateral exchange agreement in place to study with us for a semester or an academic year. You will need to have a Learning agreement signed by both your home institution and Southampton Solent University. On completion of your studies with us, you will be able to transfer the credits you have obtained back to your home institution. Studying abroad will give you an international academic experience and help you to prepare to live and work in a more global society.

Exchange opportunities

Once you are a current student at Southampton Solent University, you may be eligible to spend a period of time studying or working in the EU through the Erasmus Mobility programme, depending on certain eligibility criteria. The length of the exchange must be for a minimum of three months and a maximum of a full academic year.

The opportunity to take part on an exchange depends upon your degree programme. If the structure of your course means that you are unable to go abroad, you might wish to consider a work placement abroad which is also possible under the Erasmus Programme.

For further information on the Study Abroad or the Exchange programme please visit:
www.solent.ac.uk/international/exchange

In my view.....

"What I like most about my course is the emphasis on working in groups, sharing our ideas and helping each other."

Dalia Alfarasani, BSc (Hons) Business Information Technology



Course guide

Accountancy

BA (Hons) Accountancy
BA (Hons) Accountancy and Finance

Advertising/Communications

MA Creative Advertising
MA Public Relations
BA (Hons) Advertising and Public Relations (Top-up)
BA (Hons) Media Communications & Production (Top-up)
BA (Hons) Promotional Media (Top-up)
BA (Hons) Advertising
BA (Hons) Public Relations and Communication
BA (Hons) Publishing

Animation

BA (Hons) Animation

Architectural Technology

BA (Hons) Architectural Technology

Business / Management

MBA Master of Business Administration*
MA Management*
MA Management and Finance*
MA Management and International Business*
BA (Hons) Art Enterprise
BA (Hons) Business and Finance (Top-up)
BA (Hons) Business and Management (Top-up)
BA (Hons) Business and Marketing (Top-up)
BA (Hons) Business Management
BA (Hons) International Business Management
HND Business and Finance
HND Business and Management
HND Business and Marketing

Business IT

MSc Business Information Technology
BSc (Hons) Information Technology for Business (Top-up)
BSc (Hons) Business Information Systems (optional 1 year work placement)
BSc (Hons) Business Information Technology (optional 1 year work placement)
BSc (Hons) Information and Communication Technology (optional 1 year work placement)

Computer Networking

BSc (Hons) Computer Network Management
BSc (Hons) Computer Networks and Web Design
BSc (Hons) Computer Systems and Networks
BSc (Hons) Network Security Management
BSc (Hons) Web Design
BSc (Hons) Web Design and Internet Technology

Computing (including Internet)

MSc Software Engineering Management
BSc (Hons) Computer Games Development (optional 1 year work placement)
BSc (Hons) Computing
BSc (Hons) Software Engineering (optional 1 year work placement)

Construction

BSc (Hons) Construction Management

Criminology

MSc Criminology and Criminal Justice
BA (Hons) Criminal Investigation with Psychology
BA (Hons) Criminology
BA (Hons) Criminology and Psychology

Electronic Engineering

BEng (Hons) Electronic Engineering
BSc (Hons) Electronic Engineering
HND Electronic Engineering

Engineering (General)

BEng (Hons) Engineering with Business

Event Management

BA (Hons) Event Management
BA (Hons) Event Management (Tourism)

Fashion and Fashion Styling

MA Fashion Merchandise Management
BA (Hons) Fashion management with Marketing (Top-up)
BA (Hons) Fashion Photography (Top-up)
BA (Hons) Fashion Styling (Top-up)
BA (Hons) Fashion Writing (Top-up)
BA (Hons) Fashion
BA (Hons) Fashion Graphics
BA (Hons) Fashion Management with Marketing (with optional 1 year work placement)

BA (Hons) Fashion with Photography
BA (Hons) Fashion with Public Relations
BA (Hons) Fashion Styling (Make Up & Hair Design)
BA (Hons) Make Up and Hair Design for Music, Film and Photography

Film and Television Studies

MA Film
BA (Hons) Film and Television (Top-up)
BA (Hons) Film
BA (Hons) Film and Television Studies

Geography

BSc (Hons) Geography with Environmental Studies
BSc (Hons) Geography with Marine Studies

Graphic Design

BA (Hons) Graphic Design (Top-up)
BA (Hons) Graphic Design

Health and Fitness

BA (Hons) Fitness Management and Personal Training
BSc (Hons) Fitness and Personal Training
BSc (Hons) Health, Exercise and Physical Activity

Human Resources

MA Human Resource Management

Interactive Arts

BA (Hons) Computer & Video Games
BA (Hons) Computer Generated Imagery

Interior Design

BA (Hons) Interior Design
BA (Hons) Interior Design (Decoration)

Journalism, Media Writing and English Literature

MA Creative Writing: Industry and Practice
MA Media Writing
MA Multimedia Journalism
MA Sports Broadcasting
MA Writing Fashion and Culture
BA (Hons) Journalism (Top-up)
BA (Hons) Media Writing (Top-up)
BA (Hons) English (with optional 1 year work placement)
BA (Hons) English and Advertising (with optional 1 year

work placement)
BA (Hons) English and Film (with optional 1 year work placement)
BA (Hons) English and Magazine Journalism (with optional 1 year work placement)
BA (Hons) English and Media (with optional 1 year work placement)
BA (Hons) English and Public Relations (with optional 1 year work placement)
BA (Hons) English and Screenwriting (with optional 1 year work placement)
BA (Hons) Journalism (with optional 1 year work placement)
BA (Hons) Magazine Journalism and Feature Writing
BA (Hons) Multimedia Journalism
BA (Hons) Screenwriting
BA (Hons) Sport Journalism
BA (Hons) Writing Fashion and Culture

English Language

International Foundation Certificate
International Foundation Year

Law

LLM
LLB (Hons) Law

Maritime Industry

MSc Marine Spatial Planning
MSc Ship and Shipping Management
MSc Shipping and Commercial Law
MSc Shipping and Logistics
MSc Shipping, Ports and Environment
MSc Shipping Operations (Distance Learning)
BSc (Hons) Maritime Business
BSc (Hons) Ship and Port Management (optional 1 year work placement)

Course guide

Marketing

MA Digital Marketing and Media*
MA Marketing Management*
BA (Hons) Marketing Management
BA (Hons) Marketing with Advertising Management
BA (Hons) Marketing with Event Management
BA (Hons) Marketing with International Business
BA (Hons) Marketing with Psychology

Mechanical Engineering

BSc (Hons) Manufacturing and Mechanical Engineering
BEng (Hons) Mechanical Design
HND Manufacturing and Mechanical Engineering

Media Studies and Media Production

MA Media
BA (Hons) Media Production (Top-up)
BA (Hons) Media Culture and Production

Media, Sound and Music Technology

BSc (Hons) Audio Technology
BSc (Hons) Live and Studio Sound
BSc (Hons) Music Studio Technology
BSc (Hons) Media Technology
BSc (Hons) Sound for Film, Television and Games
BSc (Hons) Sound Engineering

Music

MA Popular Music
MA Popular Music Performance
BA (Hons) Popular Music Performance (Top-up)
BA (Hons) Popular Music Production (Top-up)
BA (Hons) Digital Music
BA (Hons) Music Promotion
BA (Hons) Popular Music and Record Production
BA (Hons) Popular Music Journalism
BA (Hons) Popular Music Performance

Outdoor and Watersports

BA (Hons) Adventure and Extreme Sports Management
BA (Hons) Outdoor Learning and Watersports Management

Outside Broadcast

BSc (Hons) Outside Broadcast (Production Operations)

Performing Arts

BA (Hons) Comedy - Writing and Performance
BA (Hons) Performance

Photography

MA Photography
BA (Hons) Photography (Top-up)
BA (Hons) Photography
BA (Hons) Photojournalism

Product Design

BA (Hons) Product Design

Social Sciences

MA Politics and International Relations
Graduate Diploma in Psychology
BSc (Hons) Psychology
BSc (Hons) Psychology (Counselling)
BSc (Hons) Psychology (Criminal Behaviour)
BSc (Hons) Psychology (Education)
BSc (Hons) Psychology (Health Psychology)
BA (Hons) Social Work

Sport

MA Sport and Development
BA (Hons) Football Studies
BA (Hons) Football Studies and Business
BA (Hons) Sport Coaching and Development
BA (Hons) Sports Studies
BA (Hons) Sports Studies and Business
BSc (Hons) Applied Sport Science
BSc (Hons) Sport Coaching
BSc (Hons) Young People and Physical Activity

Television Production

MA Television
BA (Hons) Television and Video Production
BA (Hons) Television Post-Production
BA (Hons) Television Studio Production

Tourism

BA (Hons) Cruise Industry Management
BA (Hons) International Tourism Management
BA (Hons) Tourism Management

Visual Arts

MA Illustration
MA Special Effects
BA (Hons) Visual Arts (Top-up)
BA (Hons) Fine Art
BA (Hons) Illustration
BA (Hons) Special Effects

Yacht and Boat Design

BEng (Hons) Yacht and Powercraft Design
BEng (Hons) Yacht Production and Surveying
BSc (Hons) Watersports Technology

Foundation Years

Business Foundation Year
International Foundation Year
Law Foundation Year
Sport and Tourism Foundation Year
Technology Foundation Year

*September and January intake



In my view

"The Graphic Design course at Solent prides itself on developing skills that fit the demands of industry. We are always working on live briefs such as *Esquire* magazine and the internationally recognised D&AD awards, which several of our students have won in the past."

Rita Horne, BA (Hons) Graphic Design

Entry requirements

In order to enrol on a course at the University, we ask that you demonstrate an acceptable level of competence in both written and spoken English.

The normal examinations to demonstrate competence are:

Undergraduate level

IELTS minimum 6.0 (with writing score of 5.5), or
TOEFL IBT minimum 87 (with writing score of 21), or
PEARSON Academic test minimum 51 (with writing score of 51), or
CAE minimum grade C, or
CPE minimum grade C, or equivalent.

Postgraduate level

IELTS minimum 6.5 (with writing score of 6.0), or
TOEFL IBT minimum 92 (with writing score of 23), or
PEARSON Academic test minimum 55 (with writing score of 55), or
CAE minimum grade B, or
CPE minimum grade C, or equivalent.

Academic Entry Requirements

Undergraduate First Degrees

The normal minimum entry requirements for an honours degree course are:

- A-levels or High School leaving examinations equivalent to A-levels
- International or European Baccalaureate
- International Foundation Year (see page 14)
- Or any recognised equivalent of the above qualifications.

Taught Postgraduate Masters' Degrees

The normal minimum entry requirements for a Master's degree course are:

- British Bachelor degree with a minimum of 2:2
- Or any recognised equivalent of the above qualification.

For further information on our International Entry Requirements, please visit our website where you can find more country-specific information.

Application procedures

Undergraduate students

Undergraduate students must complete a UCAS application form online via the UCAS website with the appropriate fee. (www.ucas.ac.uk)

Overseas students have until the end of June to apply in UK institutions. EU students are advised to apply by 15 January 2012 although you can still be considered afterwards if there are any places left.

Postgraduate students

Postgraduate students apply directly to the University. You must complete an application form which you can find on our website or obtain upon request. Please make sure you enclose your official transcripts and two references along with your application form.

Equivalent or lower qualifications (ELQs)

In 2008, the Government decided to no longer provide Higher Education institutions with funding to teach EU students who wish to study a qualification which is equivalent to, or lower to their existing qualifications. In response to this decision, some universities will be charging a higher tuition fee to ELQ students to compensate for the shortfall in funding. Southampton Solent University has decided to keep the fee to the current EU fees but it is important to keep in mind that ELQ students will not be able to claim for the tuition fee loan but may still be considered for the EU bursary.

If you believe you may fall in the category of the ELQ students and would like to find out more about your eligibility, please contact the Student Finance Services on + 44 (0) 141 243 3570 or email: EU_Team@slc.co.uk



Fees

Tuition fees for 2012-2013 academic year (subject to confirmation)

Students from the European Union

- Undergraduate courses - £ 7,800
Except HNDs and Foundation Years - £ 7,420
- Postgraduate courses
Fees were not yet known at the time of printing this publication.
Please visit our website for the latest updates on our tuition fees for postgraduate courses:
www.solent.ac.uk/international/fees-scholarships

Students from outside the European Union

- Undergraduate Students
 - Band B - £10,500
 - Band C - £10,000
 - Band D - £9,500
 - International Foundation Year/Certificate - £9,500
- Postgraduate Students
 - MBA - £11,000
 - MSc - £11,000
 - MA - £10,000
 - MPhil/Phd - £11,000

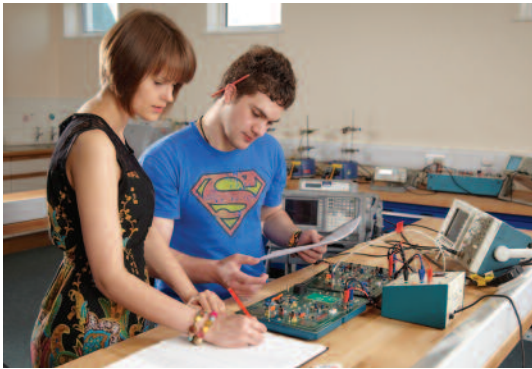
Cost of living for 2012/2013 academic year

Living expenses are additional to the course fees and are normally estimated to be between £200-£250 per month. Your living expenses include socialising and food, but do not include accommodation.

Accommodation fees in Student Residences for 2011/2012 were:

Room type	Contract Length	Weekly Fees*	Total Fees*
En-suite	41 weeks	£110.95	£4,548.95
Non-en suite	41 weeks	£89.95 – £94.85	£3687.95 – £3,888.85
Emily Davies Hall	48 weeks		
Small room		£65.10	£3124.80
Medium room		£75.95	£3,645.60
Large room		£82.95	£3,981.60
Extra large room:			
Single occupancy		£101.50	£4,872.00
Twin occupancy		£53.55	£2,570.40

*The fees listed above are inclusive of £250 Student Residence voucher.
Accommodation fees in private sector: between £300 to £400 per month



Financial support

International Scholarships

We are pleased to offer a number of scholarships to students from overseas who are applying for a full-time course at Southampton Solent University

For eligibility criteria please refer to our website for updated information

How to apply

Simply complete our overseas scholarships application Form and return it to our International Office once you have received a definite offer from us.

Early repayment discount

If you pay your whole fees up front by 28 September 2012, you will be eligible for a 5% discount from Southampton Solent University

EU Student loan

If you have difficulties paying for your fees, you can apply for a loan which is repayable when you have finished your studies and have a job paying more than £21,000 per year.* The Government pays the University on your behalf, in the form of a fees loan, and you pay back later through the tax system. In order to apply, you will need to

complete the EU12N form which can be downloaded from www.direct.gov.uk

***This is the repayment threshold in the UK. Differences in living costs will be taken into account and therefore the repayment threshold may vary in different countries.**

EU bursary

Southampton Solent University offers a bursary to full-time undergraduate EU students, as follows:

From 2012, new EU students with family income below £25,000 may receive a bursary of £400 a year. This does not need to be repaid.

Sports scholarships

High Performance Academy

The Sport Solent High Performance Academy programme continues to support high-level sporting students balance their university studies with their sporting careers, and works in collaboration with Sport Solent.

The minimum requirements for entry on to the programme are as follows:

- Full-time or part-time undergraduate, or post-graduate student.
- Applicants must have an outstanding ability in a Sport England recognised sport.
- Compete at a semi-pro level or show strong evidence of the potential to do so.

The High Performance Academy programme offers different levels of support to student athletes based on their sporting talent and potential.

Athletes selected into our High Performance Academy benefit from a range of support, Each talented athlete may receive a benefits package worth up to £2.5K.

The scheme is looking particularly for students who participate in Sailing, Football, Basketball, American Football and Cricket, but all sports are covered.

For more information regarding this scheme and how to apply, please email high.performance@solent.ac.uk

Jon Fearne - Ironman and Solent Alumni.
Using his Degree from Solent and with help from the High Performance Academy programme, Jon has gone on to set up his own business specialising in endurance sports coaching in the UK and Europe. jfmultisportcoaching.com





English Language programmes

Southampton Solent University offers a variety of English language programmes if you need or wish to improve your level of English prior to joining one of our undergraduate or postgraduate courses.

Pre-sessional English programme

Our pre-sessional English short courses can help you achieve the level of language proficiency you need to succeed at undergraduate or postgraduate study in the UK.

Six-week course – starts in July 2012

Aim to improve your IELTS score by 0.5 from 5.5 to 6.0, or 6.0 to 6.5 – in preparation for study at undergraduate or postgraduate level.

12-week course – starts in June 2012

Aim to improve your IELTS score by 1.0 – from 5.0 to 6.0, or 5.5 to 6.5 – in preparation for study at undergraduate or postgraduate level.



International foundation year/ international foundation certificate

The IFY aims to develop your English language skills from IELTS 4.5 or equivalent to the level required for continued undergraduate study (the equivalent of IELTS 6.0) on your chosen degree course at Southampton Solent University. It also aims to develop the academic skills and subject knowledge required. You will be taught in the Faculties of the University so that you are well prepared to succeed in this.

The IFC is a similar course, but is not attached to a specific degree programme. It is designed for students who are only able to study for one year at Southampton Solent University.



In my view

"Southampton Solent has always felt like home to me with everyone being very warm and welcoming. Even with its high standard academic rigours, everyone feels happy and at ease."

Patrick Iro, BSc (Hons) Manufacturing and Mechanical Engineering

Language centre

Our English courses cover a variety of levels and disciplines. We teach General English, Business English and Academic English, and give background courses in areas such as British politics and society, the UK's international image, film, media, the economy and the world of work.

The Language Centre's staff are highly experienced and well qualified. Together with the international students who join us from different countries and cultures across the world, we aim to create a lively and friendly atmosphere.

Solent international language programme

As part of your programme of study or as a supplement to your studies, you can join one of our language courses. Subject to demand, we offer English as a Foreign Language, Chinese, French, German, Italian or Spanish.





Deanery

Kimber

Hamwic



City centre **living** at Solent

Our six student residences are a short walk from the University and the city centre and are contemporary, clean and comfortable. They offer more than 2,300 rooms, including en-suite and non en-suite accommodation, all with high-speed internet access points.

The atmosphere is unbeatable and there's a real sense of community. Our dedicated residence team are on hand 24 hours a day, seven days a week.

Alternative accommodation

- shared rental of entire house or flats
- self-catering shared flat with Liberty Living.

See www.libertyliving.co.uk

A list of private sector accommodation may be provided upon request. This is a directory of providers who meet our safety criteria in Southampton and the local area. Viewing is essential.

Contact

For more information, or to book a place in one of our residences, visit our website or contact the Accommodation Office:

Tel: +44 (0)23 8031 9461/9637

Email: accommodation@solent.ac.uk



Emily Davis

In my view

Living in the students' halls is a great experience, I got to meet people from various backgrounds and learn about their cultures, country and traditions. The city centre, train and bus stations are all very close to the Halls."

**Ozair Shaikh, MA Management
International Business**



MODERN
 COMMUNITY
 CITY SOLENT
 OLD TOWN HERITAGE
 HISTORICAL
 PORT
 INDUSTRY
 TRANSPORT
 GREEN
 PARKLAND
 SHOPPING
 DIVERSE
 DOCKS
 SPITFIRE
 FOOTBALL
 VIBRANT
 OLD TOWN
 COSMOPOLITAN
 INTERNATIONAL
 TRADE CRUISE
 SAILING
 QE2 SHIPS
 SEA MARINA
 TITANIC
 WATER

SOUTHAMPTON



First-class facilities

We provide a stimulating learning environment and access to state-of-the-art resources to help you make the most of your time with us.

Flexible spaces, Wi-Fi facilities and learning zones all contribute to our lively and contemporary study environment at Solent.

Our courses also benefit from purpose-built facilities which enable you to develop hands-on and work-related skills.

From day one, you will have access to a virtual learning environment (*myCourse*) designed to help you with everything from enrolment to successfully completing your coursework. We also use social media to keep you informed of up-to-the-minute information – like the change of venue for a lecture.

The University's libraries are modern and spacious and have everything you need, including remote access to electronic information sources (such as e-books and online journals).

Our fully networked IT Resources Centres are equipped with Macs and PCs and include areas for group work and discussion.

£22.5 million
.....
campus investment over
the last four years





FACILITIES NETWORKED
ENVIRONMENT VIRTUAL MYCOURSE DISCUSSION
STIMULATING BENEFIT ACCESS ZONES WI-FI
FLEXIBLE MODERN
CONTEMPORARY SOCIAL WORK TIME
LEARNING SKILLS

In my view.....

"One of the reasons for choosing Solent University was the facilities offered for research students. Individual research desk with computer, library resources, e-resources are available to every research student"

Joe Zhou, PhD Education Management



Supporting you to **succeed**

We will provide high-quality, professional, friendly support to help you achieve your full potential whilst you are studying at the University.

Our teaching staff are approachable and focused on your needs; each faculty also has a Support Officer to provide friendly and confidential advice.

We provide an integrated Student Support Network which offers a wide range of services in the following areas: pastoral care, careers and jobshop advice, support for disabled students and those with learning difficulties, advice on student policies, study assistance, funding advice, accommodation advice, counselling, hypnotherapy and faiths/religious support and advice.

Airport arrivals service

This is available prior to Induction for international students. Arrangements can be made for you to be met by a member of University staff at Heathrow Airport who will help you make your journey to Southampton.

International induction programme

A three-day Induction programme is specifically designed for the needs of international students, including a number of educational, cultural and social events.

International support

The Students' Union and International Adviser play a key part in encouraging international student societies. Groups meet regularly and organise their own activities to promote international friendship and cultural diversity. Many ethnic societies are already established and new



societies reflecting students' interests are actively supported.

English language

If English is not your first language, you may be able to take an option in English as a Foreign Language on some courses, while on others a tutor could recommend additional classes in English.

Healthcare

If your course lasts for six months or more, you are entitled to full and free health care under the National Health Service (NHS) from the beginning of your stay in the UK.

Access all areas

We work to support disabled students to achieve their academic potential. Our staff can help ensure that relevant support is in place. The University recognises the social model of disability and strives to remove and reduce barriers to accessibility.

Here to help you study

succeed@solent helps you get better grades. There are extensive, practical online tutorials on topics such as academic writing, research and giving presentations. There are also advisers available to provide face-to-face support.



Applying for a **student visa**

At the end of March 2009, the process for applying for a student visa changed. The UK Border Agency (UKBA) has moved student visas into the new points-based system (Tier 4).

A Quick Guide for Students provided by UKBA www.ukba.homeoffice.gov.uk provides details about the application procedure and other relevant information

What do I need to apply?

You will need 40 points in order to apply for a student visa. Proof and documents will be required at the time of submitting your application form. 30 points are attributed for having accepted an offer at Southampton Solent

University and receiving a Certificate of Acceptance for Study (CAS) from the University. The remaining 10 points come from showing evidence that you have enough money to pay for your tuition fees and your monthly living expenses.

Approved education provider

Students will only be able to get a student visa if the education provider has been approved by UKBA, in which case the education provider has been granted with a licence to teach international students in the UK and added to the Tier 4 register of sponsors.

In my view.....

"There are a lot of good services provided here. You get the help you need to get a good start, an easy and helpful library and the student portal is great!"

Trine Overgaard, BA (Hons) Event Management (Tourism)



Working

in the UK

If you are a European Economic Area (EEA) or Swiss national, or the dependant of one, you are permitted to work in the UK without any restrictions on the number of hours or type of work. You will need to show an employer your passport or identity card as proof that you are a national of an EEA country/dependant of one.

EU accession countries (joined May 2005)

If you would like to work once you enter the UK, you must register under the Workers Registration Scheme within your first month of employment.

Bulgarian or Romanian?

You are able to enjoy the right of residence in the UK as a student, just as other EEA students do. However, your access to employment is restricted. If you would like to work once you enter the UK, you must apply for a BR1 work registration certificate www.ukba.homeoffice.gov.uk. You are only entitled to work 20 hours a week during term time, unlimited hours during non-term time and unlimited hours for four months after the course, beginning on the date on which the course ends (providing the registration certificate was issued before the end of the course). After working for 12 months you can apply for the unrestricted right to work.

Non-EEA nationals and work

If you are a national from outside the EEA, you can check whether you can work or not by looking at the visa stamp/entry clearance certificate in your passport. A restricted stamp indicates that you can work.

If you are a national from outside the EEA, you can check whether you can work or not by looking at the visa stamp/entry clearance certificate in your passport. A restricted stamp indicates that you can work.

If your passport contains a restriction, you may:

- work in your spare time during term time, and full-time during vacations/holidays
- take a work placement with an employer (sandwich course students)
- take an internship placement with an employer

Provided that:

- you do not work for more than 20 hours per week during term time, except in the case of an agreed work placement or internship
- you do not engage in business, self-employment or provide services as a professional sportsperson or entertainer
- you do not pursue a career by filling a permanent full-time vacancy.

A prohibited stamp indicates that you cannot work.

In my view

"I came to study at Solent because of the worldwide reputation of my course.

Southampton is a brilliant place to study and the teachers are very good."

Theo Moussion, BEng (Hons) Yacht and Powercraft Design



How to **find us**

From London Heathrow

By Rail – Take a Railair link from Terminal 4 to Woking Station. From Woking take a direct train to Southampton Central Station (journey time: 2 hours, 10 minutes). Alternatively, take a train to central London. Transfer to London Waterloo and from here take a train to Southampton Central Station (journey time: 1 hour, 30 minutes).

By coach – The National Express coach service operates from the bus station at Heathrow Airport to Southampton coach station. On direct services the average journey time is 1 hour and 50 minutes. For more information on services to Southampton and discount coach cards, visit www.nationalexpress.com

From London Gatwick

By Rail – Take a train from Gatwick to Worthing. Then take a direct train from Worthing to Southampton Central Station (journey time: 2 hours).

By coach – National Express coach services operate from Gatwick to Southampton coach station, via Heathrow (coach changeover). The average journey time is 4 hours.

Greyhound, National Express and Megabus all provide regular services to Southampton.

All journey times are approximate.

In my view

“I needed to give my career a boost, not just locally but internationally. One of the best ways to achieve this was to gain a relevant, international qualification that would give me the desired edge.”

Florence Ntuk, MA Management and Finance



Maps (including our accessibility map) can be downloaded from our website at: www.solent.ac.uk/findus



Term dates

and national holidays

These are the proposed dates for the 2012-2013 academic year:

Airport Arrival Service:

17-18 September 2012

International Welcome Week:

19 – 21 September 2012

New student enrolment and Induction:

24 - 28 September 2012

Teaching starts:

1 October 2012

Christmas break:

17 December 2012 – 4 January 2013

Easter break:

18 March 2013 – 5 April 2013

Examinations:

8 – 28 May 2013

Principal UK National holidays

	2012	2013
New Year's bank holiday	2 January	1 January
Good Friday	6 April	29 March
Easter Monday	9 April	1 April
May Day bank holiday	7 May	6 May
Spring Bank holiday	4 June	27 May
Queen's Diamond Jubilee	5 June	-
August bank holiday	27 August	26 August
Christmas bank holiday	25 December	25 December
Boxing Day bank holiday	26 December	26 December

In my view

"There are so many events, social opportunities and societies that you can pursue. There's so much more to Southampton Solent University than a great education – it will be one of the most memorable times of your life."

Will Dao, BA (Hons) Animation



Contacts

Accommodation

Telephone: +44 (0)23 8031 9461
Email: accommodation@solent.ac.uk
www.solent.ac.uk/accommodation

British Council

Tel: +44 (0)161 957 7775
www.britishcouncil.org

General enquiries

Telephone: +44 (0)845 676 7000
Email: ask@solent.ac.uk

IELTS Centre Worldwide

www.ielts.org

International Office

Telephone: +44 (0)23 8031 9646
Email: international@solent.ac.uk
www.solent.ac.uk/international

International Support Office – Visa/Immigration

Tel: +44 (0)23 8031 9821
Fax: +44 (0)23 8031 9904
Email: internationalsupport@solent.ac.uk
www.solent.ac.uk/international/visa-immigration/visa.aspx

Pearson Academic Test

www.pearsonpte.com/pteacademic

Southampton Tourist Information Centre

Tel: +44 (0)23 8083 3333
www.visit-southampton.co.uk

Students 1st

Telephone: +44 (0)23 8031 9427
Email: students1st.infocentre@solent.ac.uk
www.solent.ac.uk/welfare

Student Finance England

Tel: +44 (0)845 300 5090
www.direct.gov.uk

Students' Union

Telephone: +44 (0)23 8031 9553
www.solentsu.co.uk

TOEFL Centre Worldwide

www.toefl.org

UKCISA (UK Council for International Student Affairs)

Tel: +44 (0)20 7288 4330
www.ukcisa.org.uk

Faculty of Business, Sport and Enterprise

Telephone: +44 (0)23 8031 9133
Email: fbse@solent.ac.uk

Faculty of the Creative, Industries and Society

Telephone: +44 (0)23 8031 9653
Email: fcis@solent.ac.uk

Maritime and Technology Faculty

Telephone: +44 (0)23 8031 9141
Email: ft.admissions@solent.ac.uk

Every effort has been made to ensure that the information contained in this Booklet is accurate and up to date. However, because the content was prepared in 2011, there may be unforeseen circumstances which force change to some of the details printed.



Southampton
SOLENT
University

East Park Terrace, Southampton SO14 0YN UK
Tel: +44 (0)23 8031 9000 | Fax: +44 (0)23 8022 2259 | www.solent.ac.uk