

# Undergraduate Prospectus 2013

Fresh thinking in the heart of York



York St John  
University

Discover York St John University for yourself. We think you'll love it!

Open Days will take place on:

- Monday 2 July 2012
- Saturday 18 August 2012
- Saturday 8 September 2012
- Saturday 27 October 2012
- Wednesday 31 October 2012

Book online at [www.yorks-j.ac.uk/opendays](http://www.yorks-j.ac.uk/opendays)



## Contents

WHY YORK ST JOHN UNIVERSITY?	2-15
OUR COURSES	16-65
STUDENT LIFE	66-101
York	68
A home from home	72
Your Students' Union	76
Sport & recreation	80
Try something new	82
Starting out	86
Supporting you	88
Learning & teaching resources	92
Returning to learning?	96
Diverse international community	98
Money talk	100
WHAT NEXT?	102-113
Visit us	105
Entry requirements	106
UCAS tariff	108
How do I apply?	109
How to find us	111
Terms and conditions	112
INDEX	115-116



Where old meets new -  
a stunning campus in the  
heart of York



A photograph of two young women laughing and talking on a balcony in a modern library. The woman on the left is wearing a pink t-shirt and holding a blue book titled 'A filth of starlings'. The woman on the right is wearing a red cardigan over a white floral dress. In the background, there are bookshelves, a staircase, and other people working at tables.

# York St John University – a special place to live and learn

We've invested £75m  
over the last 10 years to  
ensure our University is the  
best it can be.




Students from over 100 countries are studying at York St John

We welcome students from as far afield as Brazil, Lithuania, Kenya and Indonesia.



## Did you know?

- York St John University was placed in the top 20 of institutions with the highest student satisfaction scores for teaching quality in the 2012 Sunday Times University Guide.
- York St John's 'outstanding' teacher education was highlighted in an OFSTED report (July 2011).
- 2012 marks the 800th anniversary of the city being granted its Royal Charter from King John.
- York was voted the place in the UK that most British people would like to live according to a survey by a national daily paper.
- In 2011 York was voted the best food and drink destination in the UK by internet voters.
- York topped a poll of the most beautiful cities in the UK (July 2011).

A group of five graduates in black gowns and blue stoles are celebrating in a courtyard. They are looking up and throwing their black mortarboards into the air. In the background, the large, ornate Gothic architecture of York Minster is visible, surrounded by trees with autumn foliage. The scene is bright and festive.

## Graduate in the impressive surroundings of York Minster

90% of our graduates (2010) were in employment or full-time study six months after graduating.



In partnership with external providers, £18m of investment has been made in student accommodation over the last 10 years.

More brand new en-suite, self-catering accommodation will open in 2013.



With all York has to offer,  
where better to spend the  
next few years of  
your life?



In a recent poll York was  
said to be one of the UK's  
friendliest, safest and  
cleverest cities!

# Our courses



## Why study Accounting & Business Management?

The accounting route is one of the foundations for understanding business. This degree will give you the opportunity to develop a broad range of skills if you are thinking of entering the accounting profession.

## What will I study?

At Level 1 you will gain a broad understanding of the subject which will be developed further at Levels 2 and 3. You will learn how to record, summarise and present financial transactions.

Modules may include:

### Level 1

- Introduction to Accounting
- Economics & Finance
- Organisations, Competition & Environment
- ICT & Study Skills

### Level 2

- Advanced Financial Reporting (1)
- International Finance
- Financial Management
- Professional Experience & Development

### Level 3

- Management Accounting & Management Control
- Advanced Financial Accounting (2)
- Strategic & Corporate Finance
- International Business Economics

A full module list can be found on our website.

## How will I be assessed?

Modules are assessed by a combination of essays, learning journals, tests, reports, projects, posters and oral presentations.

## What sorts of jobs will our graduates get?

Our graduates leave us equipped to work in accounting related jobs in all sectors of the economy.

## Fact File

Specialist degree UCAS code  
N1N4

Attendance  
3 years full-time  
5-8 years part-time

Study abroad  
Yes - see page 83

Entry requirements  
200-240 points plus three GCSEs at Grade C or above (or equivalent), including English Language and Maths.

How do I apply?  
Please see page 109

Get full course information at  
[www.yorksj.ac.uk/accounting](http://www.yorksj.ac.uk/accounting)

## Why study American Studies?

As the 21st Century advances, never has studying the history and culture of America been more important. American Studies provides a greater understanding, not only of America's profound influence upon the world, but also of the way the world regards America.

## What will I study?

This exciting programme offers modules which are designed to develop your understanding of the history, society and culture of America. The first year offers foundation level modules so is ideal if you have not studied American Studies before.

Modules may include:

### Level 1

- America's Century: The US & the World in the 20th Century
- Cinema & Society in America

### Level 2

- The Age of Anxiety: The USA, 1929-1960
- The Contemporary American City
- Screening the Modern Immigrant
- From Slavery to Freedom
- Ireland & America
- Film & the American Imagination

### Level 3

- Anglo-American Relations
- Nation Divided: The US Civil War
- The Great Society: America in the 1960s & 1970s
- Conflict on the East Asian Mainland

A full module list can be found on our website.

## How will I be assessed?

Modules are assessed by a combination of essays, reviews and in some cases, a written examination. Examinations will only contribute a maximum of 40% of the final grade of a module.

## What sorts of jobs will our graduates get?

Career destinations include: TV, media and journalism; public and private sector management; business consultancy and self-employment; insurance and financial services; teaching; university lecturing and research; museums, archives and libraries.

## Fact File

Joint Honours UCAS code  
American Studies and  
Film Studies TP7H  
History VT17

Attendance  
3 years full-time  
5-8 years part-time

Study abroad  
Yes - see page 83

Entry requirements  
220-260 points plus three GCSEs at grade C or above (or equivalent) including English Language.

How do I apply?  
Please see page 109

Get full course information at  
[www.yorksj.ac.uk/amstud](http://www.yorksj.ac.uk/amstud)

*Spend a semester in New York state, Pennsylvania or Oregon.*

## Why study Business Information Technology?

This degree will give you an opportunity to develop the skills required of managers with a particular focus upon a software approach to business information systems and web technologies. Our aim is to provide you with skills in the application of IT, to help you solve business problems.

## What will I study?

A general grounding in Business Management is obtained at Level 1 followed by opportunities to select more advanced IT topics at Levels 2 and 3.

Modules may include:

### Level 1

- Web Design
- Foundations of Business Information Systems
- Organisations, Competition & Environment
- ICT & Study Skills

### Level 2

- Databases for the Web
- Computer Programming for the Web
- Professional Experience & Development
- Research Methods

### Level 3

- Developing e-Commerce Applications
- e-business
- Digital Business Communication
- Independent Study

A full module list can be found on our website.

## How will I be assessed?

Methods of assessment are varied and will include essays, learning journals, tests, reports, projects, posters and oral presentations.

## What sorts of jobs will our graduates get?

Our graduates leave us equipped to go into a wide range of graduate careers, including: business process analysis/engineering, technical consultancy and general information technology-related business positions.

## Fact File

Specialist degree UCAS code NG25

Attendance  
3 years full-time  
5-8 years part-time

Study abroad  
Yes – see page 83

Entry requirements  
200-240 points plus three GCSEs at grade C or above (or equivalent), including English Language.

How do I apply?  
Please see page 109

Get full course information at [www.yorks.ac.uk/businessit](http://www.yorks.ac.uk/businessit)

## Why study Business Management?

This degree will give you the opportunity to develop managerial skills and perspectives and gain valuable experience in management situations. Ultimately it is about developing skills that will help you succeed in the business arena.

## What will I study?

A general grounding in Business Management is obtained at Level 1 followed by opportunities to select more advanced topics at Levels 2 and 3.

Modules may include:

### Level 1

- Organisation, Competition & Environment
- Organisational Behaviour
- Economics & Finance
- Marketing & Operations Management
- Tourism Industries

### Level 2

- Cultural & Heritage Tourism
- International Finance
- Marketing Practice
- Travel & Tourism Marketing
- Financial Reporting & Analysis
- Human Resource Management
- International Trade & Globalisation
- Professional Experience & Development

### Level 3

- Consumer Behaviour
- e-business
- Business Ethics
- International Business Economics
- Independent Study

A full module list can be found on our website.

## How will I be assessed?

Methods of assessment will include essays, learning journals, tests, reports, projects, posters and oral presentations.

## What sorts of jobs will our graduates get?

Our graduates leave us equipped to go into a wide range of graduate careers, including human resource management, tourism, marketing, business, finance and IT.

## Fact File

Specialist degree UCAS code N202

Attendance  
3 years full-time  
5-8 years part-time

Study abroad  
Yes – see page 83

Entry requirements  
220-260 points plus three GCSEs at grade C or above (or equivalent) including English Language.

How do I apply?  
Please see page 109

Get full course information at [www.yorks.ac.uk/busman](http://www.yorks.ac.uk/busman)

## Why study Business Management & Finance?

You will have the opportunity to develop a broad range of skills required by managers and in particular to develop an understanding of how finance operates in business. You will learn about preparing and interpreting income statements, balance sheets, cash flow statements, costing and decision making.

## What will I study?

A general grounding in Business Management is obtained at Level 1 followed by opportunities to select more advanced Finance topics at Levels 2 and 3.

Modules may include:

### Level 1

- Economics & Finance
- Organisations, Competition & Environment
- Marketing & Operations Management
- Organisational Behaviour

### Level 2

- Financial Management
- Financial Reporting & Analysis
- International Finance
- Marketing Practice
- International Trade & Globalisation

- Professional Experience & Development

### Level 3

- Strategic Corporate Finance
- Management Accounting & Management Control
- International Marketing
- International Business Economics
- Independent Study

A full module list can be found on our website.

## How will I be assessed?

Methods of assessment are varied and will include essays, learning journals, tests, reports, projects, posters and oral presentations.

## What sorts of jobs will our graduates get?

Your understanding of finance will help you as a manager in most areas of business. Recent graduates have found employment in the banking and financial services sectors.

### Rebecca Jenkins

“The course is really interesting as the modules are totally different. I particularly enjoyed the finance modules as they built upon what I had studied at college as well as teaching me new things.”

## Fact File

Specialist degree UCAS code  
NN23

Attendance  
3 years full-time  
5-8 years part-time

Study abroad  
Yes – see page 83

Entry requirements  
200-240 points plus three GCSEs at grade C or above (or equivalent), including English Language and Maths.

How do I apply?  
Please see page 109

Get full course information at  
[www.yorks.ac.uk/bmfinance](http://www.yorks.ac.uk/bmfinance)

## Why study Business Management & Human Resource Management?

This degree will give you an opportunity to develop the skills required of managers and in particular focus upon people management skills, an essential element for any organisation in today's challenging, constantly changing and competitive markets.

## What will I study?

A general grounding in Business Management is obtained at Level 1 followed by opportunities to select more advanced Human Resource Management topics at Levels 2 and 3.

Modules may include:

### Level 1

- Organisations, Competition & Environment
- Organisational Behaviour
- ICT & Study Skills
- Economics & Finance
- Marketing & Operations Management

### Level 2

- Human Resource Management
- Managing Employment Practices
- International Trade & Globalisation

- Research Methods
- Database Systems for the Web
- Work placement

### Level 3

- Managing a Diverse Workforce
- Leadership & Strategic Human Resource Management
- Organisational Strategy & Decision Making
- Strategic Corporate Finance
- Independent Study

A full module list can be found on our website.

## How will I be assessed?

Methods of assessment are varied and will include essays, learning journals, tests, reports, projects, posters and oral presentations.

## What sorts of jobs will our graduates get?

Our graduates leave us equipped to function in a wide variety of management roles. Employment opportunities include: general management, human resource management, recruitment, training and diversity monitoring.

## Fact File

Specialist degree UCAS code  
NN26

Attendance  
3 years full-time  
5-8 years part-time

Study abroad  
Yes – see page 83

Entry requirements  
200-240 points plus three GCSEs at grade C or above (or equivalent), including English Language.

How do I apply?  
Please see page 109

Get full course information at  
[www.yorks.ac.uk/human](http://www.yorks.ac.uk/human)

### Employer testimonial

“The student we took on work placement was innovative in her suggestions for improving our documentation and it was of great benefit to have a ‘fresh pair of eyes’ in the department. She definitely added value.”

Karen Hoyle, PA & HR Admin Manager,  
Shepherd Construction

## Why study Business Management & Language?

There is an increasing demand for Business Management students to attain proficiency in languages, particularly with respect to internationalisation and globalisation. This degree offers a flexible and applied approach to languages and business offering you the opportunity to acquire in-depth competence in one language. The languages available are Spanish, French, Japanese, German and British Sign Language. (BSL). On achieving graduate level of proficiency in your chosen language, you can have your named language shown on your degree certificate.

## What will I study?

Modules may include:

### Level 1

- Language modules
- Organisations, Competition & Environment
- Marketing Operations & Management
- Economics & Finance

### Level 2

You will study abroad at a partner institution for a complete year and write a reflective journal of your experiences. BSL students will continue their studies at York St John.

### Level 3

- Language modules
- Translation in the Workplace
- Business Ethics
- Independent Research Study or Languages Research Project

A full module list can be found on our website.

## How will I be assessed?

Methods of assessment include portfolios, essays, reports and oral tests. Assessments are mapped against the Common European Framework of Reference for Languages and National Languages Ladder. BSL students have the opportunity to take the external Signature accreditation.

## What sorts of jobs will our graduates get?

Languages are held in high regard by employers. Careers in tourism, international marketing, interpreting and translating are obvious choices for graduates. Other roles include health care, commerce, banking and publishing.

## Fact File

Specialist degree UCAS code  
N1R9

### Attendance

3 years full-time  
5-8 years part-time

### Study abroad

Yes – you will spend a year abroad.

### Entry requirements

220-260 points plus three GCSEs at Grade C or above (or equivalent), including English Language, unless you are studying BSL.

### How do I apply?

Please see page 109

Get full course information at [www.yorks.ac.uk/bmlang](http://www.yorks.ac.uk/bmlang)

## Why study Children, Young People & Families?

Recent years have seen the largest shift in approach to the development, welfare and wellbeing of children and young people since the post-war period. The wider children's workforce needs professionals who have a sound understanding of what constitutes childhood and youth today, how they develop, how to meet the diverse needs of children and young people and how to address problems.

## What will I study?

The programme aims to:

- provide a rigorous academic grounding in children, young people and families
- provide progression routes into a wide range of careers
- prepare you for the rapidly changing contexts of policy and practice in education, social policy, health and welfare.

Modules may include:

### Level 1

- Risk, Trust & Safeguarding
- Nature & Role of the Family
- Childhood & Youth Development

### Level 2

- Volunteering & the Role of the Third Sector

- Equality & Social Justice
- Transitions: Key Moments of Change

### Level 3

- Crime, Deviance & Youth Justice
- Gender & Sexualisation
- Whose Values? Whose Voice?

A full module list can be found on our website.

## How will I be assessed?

There are no examinations. You will be assessed through a mixture of creative and analytical assignments which may involve essays, written debates, collaborative projects, oral commentaries and presentations.

## What sorts of jobs will our graduates get?

The degree will provide a sound academic base for progression into a range of careers and postgraduate qualifications. Options might include working in support services, youth work, arts and leisure, play work and other educational settings.

## Fact File

Specialist degree UCAS code  
L541

### Joint Honours degree

Children, Young People & Families and Education Studies LXM3

### Attendance

3 years full-time  
5-8 years part-time

### Study abroad

No

### Entry requirements

200-240 points plus three GCSEs at Grade C or above (or equivalent), including English Language.

### How do I apply?

Please see page 109

Get full course information at [www.yorks.ac.uk/cyp&f](http://www.yorks.ac.uk/cyp&f)

*New for 2013  
BA (Hons) Youth & Community Work.  
Visit [www.yorks.ac.uk/youth](http://www.yorks.ac.uk/youth) to find out more*

### Why study Christian Theology?

Have you ever considered these questions: How will Christianity develop in the postmodern 21st century? How can Christian Theology respond to the issues of the modern world: environmental care; new technologies; the equal opportunities agenda? What does the Christian and Biblical tradition, in its various denominations, contribute to an understanding of the human person and society?

These questions are all addressed within our degree programmes.

### What will I study?

Modules may include:

#### Level 1

- The Story of the Bible
- Foundations of Christian Theology
- Contemporary Expressions of Christianity
- Introduction to Christianity
- Values & Virtues: Ethics & Religion

#### Level 2

- Christian Theologians
- Studying the Old Testament
- New Testament Themes
- Theology: Action & Reflection
- Christian Ethical Traditions

#### Level 3

- The Ethics of War and Peace
- Engaging in Theology
- Feminist Theologies
- Religion, Writing & the Creative Imagination
- Independent research modules

A full module list can be found on our website.

### How will I be assessed?

There are no formal examinations. Assessment is continuous and may include essays, group and individual presentations, timed assignments and reflective pieces on placement activities, creative writing or art.

### What sorts of jobs will our graduates get?

Some graduates pursue a teaching career or move into ministry. Social services, social work and community projects are also popular destinations. Others look for a career within the commercial, business and industry sectors. Many go on to postgraduate qualifications.

## Fact File

Specialist degree UCAS code V610

Attendance  
3 years full-time  
5-8 years part-time

Study abroad  
Yes – see page 83

Entry requirements  
200-220 points plus three GCSEs at grade C or above (or equivalent), including English Language.

How do I apply?  
Please see page 109

Get full course information at [www.yorksj.ac.uk/christiantheology](http://www.yorksj.ac.uk/christiantheology)

### Why study Counselling, Coaching & Mentoring?

This course will provide an opportunity to learn how to engage in positive, dynamic helping relationships in a range of contexts, for example therapeutic, managerial, educational and social care.

### What will I study?

You will study modules which will creatively develop your counselling, coaching and mentoring abilities and your understanding of different approaches to facilitating change. In addition, you will study relevant theoretical models that will enable you to apply these skills in a variety of vocational contexts. You will also have the opportunity to engage in related placement opportunities.

Over the course of the programme, you will develop a broad base of theoretical knowledge which will include:

- Positive Psychology
- Cognitive-Behavioural Approaches
- Organisational & Group Dynamics
- Humanistic Theory & Philosophy
- The Social Context of Helping
- Research Investigations

Alongside these theories, you will develop a range of interpersonal and practical skills which will enable you to facilitate problem-solving and constructive change.

A full module list can be found on our website.

### How will I be assessed?

You will be assessed in a variety of ways, including collaborative projects, presentations, essays and work-based portfolios.

### What sorts of jobs will our graduates get?

Graduates from this programme can expect to become effective helping professionals working across a range of occupations, such as learning mentors, mental health and social care workers, coaches and graduate management trainees.

Others may progress onto further academic study or professional training, for example in psychological therapies, teaching, social work, human resources or executive coaching.

## Fact File

Specialist degree UCAS code BX91

Attendance  
3 years full-time  
5-8 years part-time

Study abroad  
Yes - see page 83

Entry requirements  
240 points plus three GCSEs at grade C or above (or equivalent), including English Language.

How do I apply?  
Please see page 109

Get full course information at [www.yorksj.ac.uk/counselling](http://www.yorksj.ac.uk/counselling)

## Why study Creative Writing?

This degree is designed to introduce you to many forms of creative writing, both literary and non-literary. Creative Writing is an exciting area to study because it provides a serious climate for your own artistic ambitions.

## What will I study?

You will study Creative Writing alongside your other chosen Joint Honours subject.

At Level 1, you will focus on what creativity is and contexts for the development of creative writing. Level 2 builds on what you have already learned at Level 1 and allows you to develop your skills. At Level 3, you will focus on project work and have the opportunity to undertake a creative project.

### Modules may include:

- Forms of Narrative
- Varieties of Writing: Prose
- Varieties of Writing: Poetry
- Writing to Order
- Critiquing Writing
- Scriptwriting

A full module list can be found on our website.

## How will I be assessed?

You will be assessed in a variety of ways including through creative portfolios, projects and e-learning activities.

## What sorts of jobs will our graduates get?

Creative Writing students will develop a range of analytical and creative skills which are very much valued by employers. You could go on to one of a range of careers including editing, journalism and teaching. There may also be opportunities in areas such as the law, commerce and the public and not-for-profit sectors.



## Fact File

Joint Honours degrees	UCAS code
Creative Writing and: English Language	WQ83
English Literature	WQ8H
Media	WP83

**Attendance**  
3 years full-time  
5-8 years part-time

**Study abroad**  
Yes – see page 83

**Entry requirements**  
220-260 points plus three GCSEs at grade C or above (or equivalent), including English Language.

**How do I apply?**  
Please see page 109

Get full course information at [www.yorks.ac.uk/creativewriting](http://www.yorks.ac.uk/creativewriting)

## Why study Dance?

Dance is a vibrant and dynamic art form with a range of professional opportunities. You will be able to realise your creative potential through an exciting range of diverse dance activity. In Level 3, you can specialise in Choreography or Community Dance Practice and you can graduate with a degree in BA (Hons) Dance, BA (Hons) Dance: Choreography or BA (Hons) Dance: Community Practice.

## What will I study?

### Modules may include:

#### Level 1

- Devising Performance
- Movement Invention
- Physical Theatres
- Developing Movement Invention
- Dance in Context
- Critiquing the Arts

#### Level 2

- Site Specific Performance Project
- Choreography & the Designed Environment
- Introduction to Community Dance Practice
- Dance Histories in the Making
- Identities & Artistic Practices
- Practice as Research

#### Level 3

- Making & Touring
- Community Dance Practice or Choreographic Project

- Professional Practice
- Dissertation

A full module list can be found on our website.

## How will I be assessed?

You will be assessed through a range of practical and written assignments including group and individual presentations, vivas, seminars and lecture-demonstrations. You will also perform technical studies, your own choreographic work or work choreographed for you.

## What sorts of jobs will our graduates get?

Careers are available in choreography, performance, arts administration and management. Graduates set up their own companies to work as community arts practitioners, visiting dance artists in schools, performers and choreographers. Some pursue further training to become dance therapists or postgraduate study to undertake research into areas such as choreography or anthropology.

### Claire Greenwood

“I really enjoyed the flexibility of each module and how you were able to create your own opportunities within the framework of the degree.”

## Fact File

Specialist degree	UCAS code
	W500

**Attendance**  
3 years full-time  
5-8 years part-time

**Study abroad**  
Yes - see page 83

**Entry requirements**  
200-240 points plus three GCSEs at grade C or above (or equivalent), including English Language.

**How do I apply?**  
Please see page 109

Get full course information at [www.yorks.ac.uk/dance](http://www.yorks.ac.uk/dance)





### Why study Education Studies?

This programme will help you develop a good understanding of human learning and how this can be used to comprehend educational experiences. You will look at the philosophies of education, and consider global education, social justice and social inclusion.

### What will I study?

You will have the opportunity to study key issues in education. Drawing from a wide range of disciplines you will come to understand the very dynamic processes at work in every sector of education. You will be challenged to look at your own education to consider political decisions with greater understanding, to evaluate major education movements with greater objectivity and to express your own ideas with greater clarity.

Modules may include:

#### Level 1

- Education & Policy
- Learning as a Student
- Education for All?
- Education & Diversity

#### Level 2

- Education, Democracy & Caring
- Alternative Educations
- Education & Globalisation
- Representations of Education

#### Level 3

- Special Study
- Investigating Learning
- Education, Health & Wellbeing
- Education & Contemporary Ethical Issues

A full module list can be found on our website.

### How will I be assessed?

There are no examinations. You will be assessed through a mixture of creative and analytical assignments within each module which may involve essays, critiques, collaborative projects, presentations and analyses.

### What sorts of jobs will our graduates get?

Graduates go on to careers in education administration, public sector management, education guidance and counselling. To pursue a career in teaching you would need to take a postgraduate teaching qualification.

*New for 2013  
BA (Hons) Youth & Community Work.  
Visit [www.yorks.ac.uk/youth](http://www.yorks.ac.uk/youth) to find out more*

## Fact File

Specialist degree	UCAS code
	X302

Joint Honours degrees	
Education Studies and: Children, Young People & Families	LXM3
English Language	XQ33
English Literature	XQ3H
Theology & Religious Studies	VX63

**Attendance**  
3 years full-time  
5-8 years part-time

**Study abroad**  
Yes - see page 83

**Entry requirements**  
200-220 points plus three GCSEs at grade C or above (or equivalent), including English Language.

**How do I apply?**  
Please see page 109

Get full course information at [www.yorks.ac.uk/edstud](http://www.yorks.ac.uk/edstud)

### Why study English Language & Linguistics?

This programme enables you to study language from a broad range of perspectives, including the way speech is articulated, how language is structured and related to meaning, and how it relates to speakers' intentions and purposes in social interaction. As well as studying how speakers and writers use language, you may also study social attitudes to language, and the way language choices can express identities and cultural values.

English Language & Linguistics at York St John is distinctive in its focus on real-world applications for language study, offering you the opportunity to apply theoretical knowledge to real language data.

### What will I study?

Modules may include:

#### Level 1

- Multilingualism
- e-communication

#### Level 2 and 3

- Accents & Dialects
- The Language of Children
- Language, Culture & Communication
- Language & Mind
- Sociolinguistics
- Attitudes to Language
- Language & Communication in the Workplace

A full module list can be found on our website.

### How will I be assessed?

You may be assessed by essay, portfolio of work, project, presentation, online work, class test or examination. We do try to keep examinations to a minimum.

### What sorts of jobs will our graduates get?

Graduates have gone on to careers in teaching, law, publishing and journalism, advertising and marketing, social work and speech and language therapy. Around half of our graduates go on to further study.

## Fact File

Specialist degree	UCAS code
	Q101

Joint Honours degrees	
English Language and: British Sign Language	QQ13
Creative Writing	WQ83
Education Studies	XQ33
English Literature	Q390
Modern European Languages	QR38
Japanese	QT32

**Attendance**  
3 years full-time  
5-8 years part-time

**Study abroad**  
Yes - see page 83

**Entry requirements**  
200-260 points plus three GCSEs at grade C or above (or equivalent), including English Language. For Joint Honours degrees with Languages, see page 40.

**How do I apply?**  
Please see page 109

Get full course information at [www.yorks.ac.uk/ell](http://www.yorks.ac.uk/ell)

# English Literature BA (Hons)

[www.yorks.ac.uk/englit](http://www.yorks.ac.uk/englit)

## Why study English Literature?

We are bombarded with words and surrounded by stories – stories told to inform us, to entertain us, to unnerve us, to make us cry, to make us laugh, to make us buy things. Understanding how stories work – and how they appeal to us, persuade us and affect us – is part of understanding the world we live in.

## What will I study?

Modules may include:

### Level 1

- Reading Texts 1
- Forms of Narrative
- Writing for Academic Success
- Gender & Writing

### Level 2

- Gothic & Horror
- Cultures of Childhood
- Literary Theory
- Creative Writing

### Level 3

- Writing of the Romantic Period
- American Literature in the 20th Century
- 19th Century Writing
- Dissertation
- Creative Writing

A full module list can be found on our website.

## How will I be assessed?

On most modules, you will be assessed by your coursework, such as essays, presentations or learning journals.

## What sorts of jobs will our graduates get?

Recent English graduates have found work in the media and publishing, arts administration, public services, retail and marketing. Many go on to study for postgraduate qualifications in teaching, librarianship or journalism.

*Our Literature Series programme brings in authors like Jackie Kay and Jack Mapanje to speak to you.*

## Fact File

Specialist degree UCAS code  
Q300

Joint Honours degrees	
English Literature and: British Sign Language	QQ1H
Creative Writing	WQ8H
Education Studies	XQ3H
English Language	Q390
Film Studies	QP3H
History	QV31
Media	PQH3
Modern European Languages	QR3V
Japanese	QT23

Attendance  
3 years full-time  
5-8 years part-time

Study abroad  
Yes - see page 83

Entry requirements  
200-260 points plus three GCSEs at grade C or above (or equivalent), including English Language. For Joint Honours degrees with Languages see page 40.

How do I apply?  
Please see page 109

Get full course information at  
[www.yorks.ac.uk/englit](http://www.yorks.ac.uk/englit)

# English Literature with Creative Writing BA (Hons)

[www.yorks.ac.uk/engcreate](http://www.yorks.ac.uk/engcreate)

## Why study English Literature with Creative Writing?

This degree is designed for those wishing to concentrate on English Literature throughout Level 1 of their studies, but with the opportunity to combine this with Creative Writing in Levels 2 and 3.

## What will I study?

You will study Level 1 English Literature modules which explore a range of texts in different genres including texts by a range of contemporary writers.

Modules may include:

- Reading Texts 1
- Forms of Narrative
- Writing for Academic Success
- Gender & Writing

At Levels 2 and 3, you will continue to study Literature modules and also take a 20-credit Creative Writing focused module at each level. You will also undertake a creative project in your final year.

A full module list can be found on our website.

## How will I be assessed?

You will be assessed in a variety of ways including essays, creative portfolios, presentations and research proposals. You will have opportunities throughout the programme to develop your writing skills with guidance from specialist tutors.

## What sorts of jobs will our graduates get?

Our graduates can demonstrate a wide range of creative and analytical skills valued by employers. Many of our students go on to become editors, journalists, teachers, writers and artists. Others are valued for their command of language in contexts not traditionally associated with literature, such as the law, commerce and the public and not-for-profit sectors.

## Fact File

Specialist degree UCAS code  
Q3W8

Attendance  
3 years full-time  
5-8 years part-time

Study abroad  
Yes - see page 83

Entry requirements  
220-260 points plus three GCSEs at grade C or above (or equivalent), including English Language.

How do I apply?  
Please see page 109

Get full course information at  
[www.yorks.ac.uk/engcreate](http://www.yorks.ac.uk/engcreate)

*Critically acclaimed international bestselling author Kate Atkinson and former poet laureate Andrew Motion are Honorary Fellows of York St John.*

## Why study Film & Television Production?

We encourage you to become creative and professional makers of cutting edge film and television. Practical work and theoretical analysis are integrated in a unique approach to develop you as a critical practitioner. The structure of the degree allows you to choose a named degree related to your Level 3 project opportunity. This could be Film Production, Screenwriting, Documentary Production or an Internship.

## What will I study?

### Level 1 - Your introductory year

- Practice: Film & Television Production, Studio Television, Outside Broadcasting, Location Filming, Storyboarding, Directing, Producing, Lighting, Camera, Sound, Editing, Post-production.
- Theory: Narratology, Script Development, Film Theory, Ideology & Audience.

### Level 2 - Your development year

- Practice: Short Film Production, Television Drama, Factual Broadcasting, Documentary.
- Theory: Film Theory, Work in the film & television industries (including a three-week placement).
- Opportunity to study abroad.

### Level 3 - Your project year

- Practice: Documentary Making, Working with New Media, Short Film Production, Television Drama, Factual Television.
- Theory: Postmodern Theory, Film Theory, Theories of Television, Theories of New Media and a Dissertation.
- Opportunity to undertake an internship.

A full module list can be found on our website.

## How will I be assessed?

Production and theoretical work is a significant part of continual assessment, rather than formal examinations.

## What sorts of jobs will our graduates get?

Graduates are working with BBC TV Light Entertainment, ITN, the British Film Institute, Aardman Animation, Century Films, Sky News, and Empire Magazine. Some go on to postgraduate research and study.

### Rich O'Hare

"My course was full of practical film making and theoretical study on film, from scripts to finished films. Its really hands – on, using professional equipment you rarely get a look at during college.

## Fact File

Specialist degree UCAS code  
W600

Attendance  
3 years full-time  
5-8 years part-time

Study abroad  
Yes - see page 83

Entry requirements  
240-260 points plus three GCSEs at grade C or above (or equivalent), including English Language.

How do I apply?  
Please see page 109

Get full course information at  
[www.yorks.ac.uk/filmandtv](http://www.yorks.ac.uk/filmandtv)



## Why study Film Studies?

This interdisciplinary programme focuses on a range of critical approaches to the history, theory and criticism of film. You will be equipped with the tools to analyse and critically engage films of different genres, styles, periods and world sites vis-à-vis a range of cultural forms such as painting, photography and literature.

## What will I study?

You will explore a number of different approaches that can be taken to the academic study of film.

### Modules may include:

#### Level 1

- Introduction to Film Studies
- Cinema & Society: Film as Evidence & Propaganda

#### Level 2

- Gothic & Horror
- Screening the Modern Immigrant: Ethnicity & Film in the USA
- Transnational Cinema
- Film & the American Imagination

#### Level 3

- Documentary Film
- Gender, Sexualities & Contemporary Popular Culture
- Dissertation

A full module list can be found on our website.

## Getting involved

You will be able to get involved in the production of our magazine NEUTRAL. This magazine engages actively and creatively with contemporary media and culture.

## How will I be assessed?

A range of assessment methods are used including course work, examination and oral presentations. Assessment is designed to ensure that you develop the kind of practical and analytical skills that are attractive to employers.

## What sorts of jobs will our graduates get?

Film Studies graduates go on to work nationally and internationally in a broad range of careers, in the media, cultural sector, public relations and information industries. There will also be opportunities for graduates to go on to postgraduate research and study.

## Fact File

Joint Honours degrees	UCAS code
Film Studies and: American Studies	TP7H
English Literature	QP3H
Media	P391

Attendance  
3 years full-time  
5-8 years part-time

Study abroad  
Yes - see page 83

Entry requirements  
220-260 points plus three GCSEs at grade C or above (or equivalent), including English Language.

How do I apply?  
Please see page 109

Get full course information at  
[www.yorks.ac.uk/filmstud](http://www.yorks.ac.uk/filmstud)

## Why study Fine Arts?

Our programme explores Fine Arts practices across disciplines, allowing specialisation at your own pace of discovery. You will develop an understanding of how art can be created, debated, exhibited, historicised and theorised and thus strengthen your professional, vocational and academic ability as an artist.

## What will I study?

Modules may include:

### Level 1

- Composition & Form
- Histories of Practice
- Media, Time & Space
- Theories of Practice
- Approaching Practice

### Level 2

- Material, Form, Discourse
- Continental Aesthetics
- Extending Practice
- Practice & Context
- Critical & Cultural Theory
- Working in the Creative Industries

### Level 3

- Advanced Studio & Exhibition Practice
- Written Research Project
- Professional Practice Portfolio

A full module list can be found on our website.

We have specialist facilities including individual studio workspaces, exhibition and installation space; Apple Mac Pro workstation suite; workshops for digital media, sculptural construction and printmaking; photographic darkroom.

## How will I be assessed?

Through a continuous process of portfolio building, you will submit a range of research materials, including sketchbooks, contextual files, experimental sketches, preparation and photographic documentation.

## What sorts of jobs will our graduates get?

Our graduates develop and sustain their creative practice through sales of work, commissions, grants and residences. Many also apply their learning through arts therapy, teaching (through PGCE), community arts work, curating, arts management or media production. Many will later incorporate postgraduate study and advanced research into their practice.



## Fact File

Specialist degree UCAS code  
WWC2

Attendance  
3 years full-time  
5-8 years part-time

Study abroad  
Yes - see page 83

Entry requirements  
200-240 points plus three GCSEs at grade C or above (or equivalent), including English Language.

How do I apply?  
Please see page 109

Get full course information at  
[www.yorksj.ac.uk/finearts](http://www.yorksj.ac.uk/finearts)

*CREATE is a packed two-week programme of exciting arts activities and exhibitions by our talented final-year students.*

## Why study History?

This programme gives you the chance to study a broad range of types and periods of history, from medieval to modern, with opportunities for individual specialisation and research. York has a rich selection of museums, libraries and historical sites to complement and enhance your studies.

## What will I study?

Modules may include:

### Level 1

- The Making of Britain
- War & Society
- America's Century
- The Visible Past
- Sport & Society

### Level 2

- The Flowering of the Middle Ages
- Roads to Revolution: England 1558-1642
- The Age of Nationalism: Europe 1848-1914
- The Age of Anxiety: the USA, 1929-1960
- China, 1911-1997
- History, Film & Television

### Level 3

- Origins of World War II
- The English Civil War
- Late Victorian & Edwardian Britain
- The Great Society: America in the 1960s
- Conflict on the East Asian Mainland

A full module list can be found on our website.

## How will I be assessed?

Individual modules are assessed by course work (essays, projects or other assignments) or by a combination of continuous assessment and written examination, with examinations contributing a maximum of 40% of the final grade.

## What sorts of jobs will our graduates get?

A number of History graduates go on to postgraduate study or history-related careers such as heritage and tourism, archive, library and information work, teaching or research.

## Fact File

Specialist degree UCAS code  
V100

Joint Honours degrees  
History and:  
American Studies VT17  
English Literature QV31

Attendance  
3 years full-time  
5-8 years part-time

Study abroad  
Yes - see page 83

Entry requirements  
220-260 points plus three GCSEs at grade C or above (or equivalent), including English Language.

How do I apply?  
Please see page 109

Get full course information at  
[www.yorksj.ac.uk/history](http://www.yorksj.ac.uk/history)

## Why study International Business Management?

Globalisation has resulted in an increasing need for managers who adopt an international perspective on business. This degree will help to develop your managerial skills and knowledge in relation to international business.

## What will I study?

A general grounding in International Business Management is obtained at Level 1 followed by opportunities to select more advanced topics at Levels 2 and 3.

Modules may include:

### Level 1

- Organisations, Competition & Environment
- ICT & Study Skills
- Economics & Finance
- Organisational Behaviour
- Marketing & Operations Management
- Foreign Language

### Level 2

- International Trade & Globalisation
- International Finance
- Marketing Practice
- Travel & Tourism Marketing
- Professional Experience & Development

- Foreign Language
- Financial Management

### Level 3

- International Marketing
- International Business Economics
- Organisational Strategy & Decision Making
- Managing a Diverse Workforce
- Independent Study
- Foreign Language

A full module list can be found on our website.

## How will I be assessed?

Methods of assessment are varied and will include essays, learning journals, tests, reports, projects, posters and oral presentations.

## What sorts of jobs will our graduates get?

Our graduates leave us equipped to meet the challenges of work as managers in an international and global setting.

## Fact File

Specialist degree UCAS code  
N120

### Attendance

3 years full-time  
5-8 years part-time

### Study abroad

Yes - see page 83

### Entry requirements

240 points plus three GCSEs at grade C or above (or equivalent), including English Language.

### How do I apply?

Please see page 109

Get full course information at [www.yorksj.ac.uk/intbusman](http://www.yorksj.ac.uk/intbusman)

*Learn a foreign language such as Spanish, Japanese or French as part of your degree.*

## Why study International Tourism Management?

Globalisation has resulted in an increasing need for managers who adopt an international perspective on business, particularly within the tourism sector. This degree will provide you with opportunities to develop a range of managerial skills of particular relevance to the international tourism industry.

## What will I study?

A general grounding in international tourism is obtained at Level 1 followed by opportunities to select more advanced topics at Levels 2 and 3.

Modules may include:

### Level 1

- Organisations, Competition & Environment
- Organisational Behaviour
- Marketing & Operations Management
- Foreign Language
- Tourism Industries

### Level 2

- Travel & Tourism Marketing
- Cultural & Heritage Tourism
- International Trade & Globalisation
- Professional Experience & Development

- Research Methods for Business
- Foreign Language
- Research Methods

### Level 3

- Responsible Tourism
- Tourism Policy & Planning
- International Marketing
- International Business Economics
- Independent Study
- Foreign Language

A full module list can be found on our website.

## How will I be assessed?

Methods of assessment are varied and will include essays, learning journals, tests, reports, projects, posters and oral presentations.

## What sorts of jobs will our graduates get?

Graduates will be equipped for a variety of management careers. Employment opportunities include: general management, transport, hospitality, attractions, tour operators and tourism agencies. Other foreign language based opportunities exist for those choosing language modules.

## Fact File

Specialist degree UCAS code  
N833

### Attendance

3 years full-time  
5-8 years part-time

### Study abroad

Yes - see page 83

### Entry requirements

200 points plus three GCSEs at grade C or above (or equivalent), including English Language.

### How do I apply?

Please see page 109

Get full course information at [www.yorksj.ac.uk/internatourism](http://www.yorksj.ac.uk/internatourism)

## Why study Languages?

The Languages degree programme is innovative and distinctive. It takes account of the changing face of languages in the UK against the backdrop of an international marketplace. Our approach to language learning emphasises communication, transferable skills and the opportunity to acquire competence in more than one language, as well as to build on prior linguistic experience.

## What will I study?

As well as acquiring practical skills, in your language(s) you will also explore aspects of the culture, communities and societies of the language.

Modules may include:

### Level 1

- Language Carousel
- Languages Modules

### Level 2

- Study Abroad
- Languages Enquiry
- Languages Modules
- Languages in the Workplace

### Level 3

- Languages Research Project
- Advanced Language & Culture
- Proficiency Languages modules
- Translation in the Workplace

A full module list can be found on our website.

## How will I be assessed?

Methods of assessment include portfolios of language work, oral tests and presentations (signed in the case of BSL), essays and reports. Assessment is mapped against the Common European Framework of Reference for Languages and National Languages Ladder. BSL students have the opportunity to take the external Signature accreditation.

## What sorts of jobs will our graduates get?

Language skills are held in high regard by employers. Careers in tourism, international marketing, teaching, interpreting and translating are obvious choices for language graduates, but language skills are also required by workers in health care, commerce, banking, publishing and journalism to name but a few.

*Our BSL Head of Programme was named National Teacher of the Year at the 2011 Signature awards.*

## Fact File

### Joint Honours degrees

*You can study:*

- British Sign Language
- Modern European Languages  
French, German or Spanish
- Japanese

*with:*

English Language (page 31)  
English Literature (page 32)

### Attendance

3 years full-time  
5-8 years part-time

### Study abroad

Yes - see page 83

### Entry requirements

220-260 points plus three GCSEs at grade C or above (or equivalent), including English Language. For languages other than BSL, you should normally have achieved a GCSE at grade B or equivalent in a foreign language or Languages Ladder Intermediate grades in a language other than English.

### How do I apply?

Please see page 109

Get full course information at  
[www.yorks.ac.uk/languages](http://www.yorks.ac.uk/languages)

## Why study Marketing Management?

Marketing management is central to the success of organisations and is crucial in developing relationships with customers and markets. This degree will give you the opportunity to develop managerial skills and perspectives and gain valuable experience in both management and marketing situations.

## What will I study?

A general grounding in Marketing and Management is obtained at Level 1 followed by opportunities to select more advanced topics at Levels 2 and 3.

Modules may include:

### Level 1

- Marketing & Operations Management
- ICT & Study Skills
- Organisations, Competition & Environment
- Economics & Finance

### Level 2

- Marketing Practice
- Travel & Tourism Marketing
- International Trade & Globalisation
- Cultural & Heritage Tourism

### Level 3

- Consumer Behaviour
- International Marketing
- Marketing Communications
- Business Ethics

A full module list can be found on our website.

## How will I be assessed?

Methods of assessment are varied and will include essays, learning journals, tests, reports, projects, posters and oral presentations.

## What sorts of jobs will our graduates get?

You will be equipped to go into a wide range of management careers including general management, market research, product and brand management and marketing communications.

## Fact File

Specialist degree UCAS code  
N500

### Attendance

3 years full-time  
5-8 years part-time

### Study abroad

Yes - see page 83

### Entry requirements

200-240 points plus three GCSEs at grade C or above (or equivalent), including English Language.

### How do I apply?

Please see page 109

Get full course information at  
[www.yorks.ac.uk/marman](http://www.yorks.ac.uk/marman)

## Why study Marketing Management & Web Technologies?

This course is aimed at those who wish to develop web technology skills along with marketing capabilities. The degree will give you the opportunity to develop managerial skills and perspectives and gain experience in a range of marketing functions and web technologies.

## What will I study?

A general grounding in Marketing and Information Technology is obtained at Level 1 followed by opportunities to select more advanced topics at Levels 2 and 3.

Modules may include:

### Level 1

- Marketing & Operations Management
- Web Design
- Foundations of Information Systems
- ICT & Study Skills

### Level 2

- Marketing Practice
- Computer Programming for the Web
- Databases for the Web
- Research Methods

### Level 3

- Consumer Behaviour
- Developing e-Commerce Applications
- e-business
- Independent Research

A full module list can be found on our website.

## How will I be assessed?

Methods of assessment are varied and will include essays, learning journals, tests, reports, projects, posters and oral presentations.

## What sorts of jobs will our graduates get?

You will be equipped to go in to a wide range of management careers including market research, product and brand management, marketing communications and web design and development.

## Fact File

Specialist degree UCAS code  
NG54

### Attendance

3 years full-time  
5-8 years part-time

### Study abroad

Yes - see page 83

### Entry requirements

200-240 points plus three GCSEs at grade C or above (or equivalent), including English Language.

### How do I apply?

Please see page 109

Get full course information at [www.yorksj.ac.uk/marketingweb](http://www.yorksj.ac.uk/marketingweb)

## Why study Media?

This degree programme will give you a comprehensive understanding of the history, nature and power of the media and encourage you to explore the relationships between different forms of media, culture and society.

## What will I study?

Modules may include:

### Level 1

- Reading the Media
- Media Narratives
- The Medium is the Message
- Encoding/Decoding

### Level 2

- Issues of Taste
- Popular Genres
- Comedy, Culture & National Identity
- Globalisation

### Level 3

- Media Geographies
- Gender, Sexuality & Contemporary Popular Culture
- Media Futures & Cybercultures
- Creative Audiences

A full module list can be found on our website.

## How will I be assessed?

There are no examinations on this degree. Instead, you will be assessed through a mixture of creative and analytical assignments which include essays, critiques and analysis, together with creative projects in fact and fiction across all media.

## Getting involved

Media students will be able to get involved in the production of our magazine NEUTRAL, a magazine that is anything but neutral in tone and content. NEUTRAL engages actively and creatively with contemporary media and culture.

## What sorts of jobs will our graduates get?

Graduates will be attractive to a range of employers within the media, entertainment, creative, cultural and communications industries.

This is a programme that will train you not only to analyse the media, but creatively engage with it in a variety of ways - from creative writing to electronic imaging.

## Fact File

Specialist degree UCAS code  
P305

### Joint Honours degrees

Media and:	
Creative Writing	WP83
English Literature	PQH3
Film Studies	P391

### Attendance

3 years full-time  
5-8 years part-time

### Study abroad

Yes - see page 83

### Entry requirements

220-260 points plus three GCSEs at grade C or above (or equivalent), including English Language.

### How do I apply?

Please see page 109

Get full course information at [www.yorksj.ac.uk/media](http://www.yorksj.ac.uk/media)

## Why study Music?

Our degree provides a relevant, contemporary and challenging programme which crosses musical boundaries. Music teaching is led by practice, whether in performance, composing or theory, and you will gain considerable insight from this 'hands-on' approach to learning.

You can specialise in Solo Performance, Composing or Applied Music at Levels 2 and 3 and you can choose to be awarded a degree whose title reflects your specialism: BA (Hons) Music: Composition, BA (Hons) Music: Performance, BA (Hons) Applied Music or BA (Hons) Music.

## What will I study?

The course is flexible to allow you to study areas of music which particularly interest you.

Modules may include:

### Level 1

- Music in Context
- Music Techniques
- Vox
- Drumming

### Level 2

- Improvisation
- Music in the Community
- The 21st Century Audience
- Music in Education
- Solo Performance or Composition

### Level 3

- Dissertation
- Research & Enterprise in Music
- Contemporary Music
- Music Ensembles
- Solo Performance or Composition

A full module list can be found on our website.

## How will I be assessed?

There are no formal examinations. Assessment is carried out through a series of presentations and performances, and through the submission of coursework.

## What sorts of jobs will our graduates get?

Many of our graduates have chosen to work in music, as performers, composers, teachers, community musicians, administrators, therapists or technicians. Others have found employment in business or the public service sectors, from fast-track management schemes to the police force!

## Fact File

Specialist degree UCAS code  
W300

### Attendance

3 years full-time  
5-8 years part-time

### Study abroad

Yes - see page 83

### Entry requirements

200-240 points plus three GCSEs at grade C or above (or equivalent), including English Language.

### How do I apply?

Please see page 109

Get full course information at [www.yorksj.ac.uk/music](http://www.yorksj.ac.uk/music)

*Our Music Concert series includes an African Drumming Group, Gospel Choir, YSJ Big Band, Barbershop Quartet and many more musical styles.*

## Why study Music Production?

Music Production is the degree for the musician who loves contemporary digital technology. Modern technology has opened up new avenues of production, creation, consumption and distribution for music of all kinds. This programme is designed for those who want to gain a deeper understanding of this changing musical context and to actively apply this knowledge as they engage with it and create their own music products.

## What will I study?

You will study theories, contexts, technology, skills and techniques that relate to music production. Such things as contemporary digital recording in the studio and location recording, sound creation and manipulation, sequencing and editing, and the skills of writing, arranging and producing music will be studied throughout your degree.

Modules may include:

### Level 1

- Music in Context
- Critiquing Music
- Music Production Techniques 1
- Production Practice 1

### Level 2

- The 21st Century Audience
- Musics & Societies
- Music Production Techniques 2
- Production Practice 2

### Level 3

- Major Project
- Minor Project
- Production Practice 3

A full module list can be found on our website.

## How will I be assessed?

Your study in music production is practice-led and contextualized through theory and you will be assessed through presentation, performance, production or the submission of coursework. There are no formal written examinations.

## What facilities will I have access to?

The University's recording studios, digital audio workstation (DAW) suites and location recording equipment are available to you to enable you to complete the practical projects and exercises. The computer systems are both Apple and PC-based running industry-standard software including Pro Tools, Logic Pro and Cubase.

## Fact File

Specialist degree UCAS code  
J930

### Attendance

3 years full-time  
5-8 years part-time

### Study abroad

Yes - see page 83

### Entry requirements

160 points plus three GCSEs at grade C or above (or equivalent), including English Language.

### How do I apply?

Please see page 109

Get full course information at [www.yorksj.ac.uk/musicprod](http://www.yorksj.ac.uk/musicprod)

## What sorts of jobs will our graduates get?

Throughout your degree you will work on real-life, client-led projects, and benefit from working with visiting lecturers from the industry and industry partners. The skills and experience gained on the programme will equip you to move into careers in the music industry, such as an audio engineer or music producer.



### Why study Occupational Therapy?

The success of our graduates has earned us a national reputation for excellence. We are committed to providing a high quality educational experience for our students, that recognises the importance of individuality.

### What will I study?

At Level 1 you will have an opportunity to study biological sciences, psychological and social sciences, health, wellbeing, illness and disability and occupational therapy practice.

At Level 2 the focus is on applied theory and occupational therapy skills within the physical and psychosocial domains. There is an emphasis on communication skills, research, IT and occupational therapy specific techniques and approaches.

At Level 3 you will complete a dissertation using research and enquiry techniques.

At Level 3 on all programmes there are opportunities for clinical experiences in Asia and South Africa. In addition, at Level 2 on the full-time programmes there are opportunities in Norway.

### Will I get any practical experience?

The programmes include a minimum of 1000 hours of professional practice during which you will work alongside experienced occupational therapists. You will have direct contact with patients and clients and are expected to take increasing levels of responsibility under the direction of qualified staff.

We attempt to ensure a balanced experience within health, community, physical and mental health fields with clients and patients of all ages and individual needs.

### How will I be assessed?

Assessment is through individual or group presentations, assignments and case studies. Practical assessments allow you to demonstrate your skill development and you will undertake a research project in your final year. All modules including clinical practical placements must be passed to enable you to progress on to the next level.

### What sorts of jobs will our graduates get?

Graduates work in occupational therapy services in a range of areas in health and social care such as hospitals, schools, community practice and charitable organisations.

## Fact File

BHSc (Hons) Full-time UCAS code B930

### Attendance

3 years full-time

### Study abroad

Yes - see page 83

### Entry requirements

260 points from BCC at A2 or DMM at BTEC, plus five GCSEs at grade C or above (or equivalent) including English Language, Maths and Science. Points cannot be counted from subjects spread over multiple awards. Satisfactory medical report/enhanced CRB check. You must demonstrate evidence of having successfully undertaken a recent assessed course of academic study.

BHSc (Hons) YSJ code D2BHOTINS  
In-Service

### Attendance

3 1/2 years part-time

### Entry requirements

View full entry requirements at [www.yorks.ac.uk/ot](http://www.yorks.ac.uk/ot)

### How do I apply?

Please see page 109

Get full course information at [www.yorks.ac.uk/ot](http://www.yorks.ac.uk/ot)

### Why study Physical Education & Sports Coaching?

This innovative course is aligned with current legislation and the national strategies for physical education and sport. This course is for those who are keen to pursue careers in, and develop the areas of physical education, school sports or sports coaching.

### What will I study?

You will study five key themes:

- **Physical Education & Sports Coaching:** you will develop your ability to deliver safe and effective sports activities through participation and performance. You will also investigate areas such as teaching theories, leadership, lifelong physical activity and talented athlete development.
- **Sport in Society:** you will examine the social aspects underpinning inclusion and exclusion within sport, the sociological theories underpinning sport and the social and ethical arguments within sport.
- **Sports Performance Conditioning:** aims to provide both the theoretical underpinning and the practical skills to deliver safe, effective sports conditioning programmes for recreational to elite performers.

- **Personal & Professional Development:** you will undertake work-based learning and also develop a personal action plan. You will also have the chance to study additional vocationally-related qualifications for the sports industry.
- **Research methods:** you will develop your understanding of research and your skills as a researcher and produce your final dissertation.

### How will I be assessed?

Approximately 60% of the assessments are based upon your practical/applied competence as a teacher/coach. The remainder of the degree will be assessed through a variety of essays and case studies.

### What sorts of jobs will our graduates get?

Many of our graduates will go onto study for a PGCE in Physical Education to gain qualified teacher status. You will also be well equipped for employment in community sport initiatives, youth work, multi-skills clubs, out of school hours learning provision, youth sport development, community sports coaching and teaching assistant roles. Our graduates will be well prepared to enter the public, private and voluntary sectors of sport. Occupations would

## Fact File

Specialist degree UCAS code XX31

### Attendance

3 years full-time  
5-8 years part-time

### Study abroad

Yes - see page 83

### Entry requirements

260 points plus three GCSEs at grade C or above (or equivalent), including English Language and Maths. (Level 2 Maths equivalencies are not accepted.) You will also need a satisfactory Enhanced CRB check.

### How do I apply?

Please see page 109

Get full course information at [www.yorks.ac.uk/pe](http://www.yorks.ac.uk/pe)

also typically include the varied sports coaching and development initiatives delivered by national and local agencies.



## Why study Physiotherapy?

Physiotherapists apply clinical reasoning skills and take a problem-solving approach to patient-centred care. Physiotherapy interventions include manual therapy, therapeutic exercise and electrotherapy, which are used to maximise the function and potential of individuals. On completion of the programme you will be able to meet the requirements for registration with the Health Professions Council (HPC) and membership of the Chartered Society of Physiotherapy (CSP).

## What will I study?

You will learn through lectures, tutorials and practical workshops.

Modules may include:

### Level 1

- Principles of Physiotherapy 1
- Therapeutic Interventions
- Introduction to Evidence-based Practice
- Personal & Professional Development
- Principles of Physiotherapy 2
- Exercise Therapy
- Working with & for Others
- Risk Assessment & Safe Practice
- Physiotherapy Professional Practice Level 1

### Level 2

- Neurology
- Cardiovascular & Respiratory
- Musculoskeletal
- Physiotherapy Professional Practice Level 2

### Level 3

- Complex Patient Care
- Dissertation
- Contemporary Careers
- Physiotherapy Professional Practice Level 3

The clinical practice placements allow you to work with real patients under the close supervision of qualified clinicians in a range of contemporary therapeutic settings.

## How will I be assessed?

Methods of assessment may include individual or group presentations, assignments and case studies. Practical assessments allow you to demonstrate your skill development and you will undertake a research project in your final year.

## What sorts of jobs will our graduates get?

Physiotherapists are employed within a range of settings including the NHS, GP practices, schools, hospices and private practice. Physiotherapists work with people of all ages with a wide range of conditions.

## Fact File

Specialist degree UCAS code  
B160

### Attendance

3 years full-time

### Study abroad

There are opportunities for final year students to undertake a placement in Norway, Bangladesh or the Seychelles.

### Entry requirements

- 300 points in three A2 subjects to include Grade B or above in Biology or PE
- Five GCSEs at Grade C or above (or equivalent) to include English Language, Maths and Science
- Access to Higher Education Diploma in Sciences/Health Sciences
- Work-shadowing experience
- Satisfactory medical report
- Satisfactory Enhanced CRB check

### How do I apply?

Please see page 109

Professional Football Association candidates who are members of the PFA may be eligible for PFA funding. Contact Judy Purton, for further information  
E: [j.purton@yorks.ac.uk](mailto:j.purton@yorks.ac.uk)

Get full course information at  
[www.yorks.ac.uk/physio](http://www.yorks.ac.uk/physio)

## Why study Primary Education?

This exciting programme is based on the principle of reflective practice and an enquiry-based approach to teaching and learning. Ofsted inspection reports and the Newly Qualified Teacher Survey, demonstrate that York St John is a high quality provider of initial teacher training.

## What will I study?

There are four main strands to the degree:

### School Experience

Opportunities for learning through school experience include: observation of experienced teachers, investigation of schools' policies procedures and practices, structured feedback on teaching from trained mentors and participation in the life and work of schools.

### Professional Studies

This strand will enable you to investigate and develop skills in: planning, class management, assessment for learning, and recording and reporting children's attainment.

### Curriculum Studies

There will be modules covering each of the Core and Foundation subjects of the National Curriculum.

## Advanced Professional Focus

In Year 3 there is an opportunity to specialise on some key educational areas:

- Early Years
- Creativity & Communication
- Modern Foreign Languages
- Special Educational Needs
- Values Based Education

Placements in schools occur each year and you will progressively take more responsibility for teaching.

## How will I be assessed?

Modules are assessed by project work, essays, presentations, seminar papers, learning journals, practical teaching appraisals and some examinations.

## Will I get Qualified Teacher Status (QTS)?

York St John is an accredited initial teacher training provider and this programme complies with the Secretary of State's requirements of programmes leading to QTS. On successful completion of your degree, and the skills tests set by the Training and Development Agency (TDA), you will be recommended for QTS.

## Fact File

Primary Education UCAS code  
(5 – 11 years) X320

Primary Education  
(3 – 7 years) X310

### Attendance

3 years full-time

### Study abroad

Yes, there are opportunities for placements in Europe and beyond.

### Entry requirements

- 280 points plus three GCSEs at grade C or above (or York St John approved equivalent), including English Language, Maths and Science.
- Satisfactory medical report
- Satisfactory CRB check
- A minimum of two weeks experience within a relevant primary school setting
- Pass GTCE suitability questionnaire

### How do I apply?

Please see page 109

Please do not apply for both upper and lower primary - you will have the opportunity to discuss your preferences if you are invited to interview.

Get full course information at  
[www.yorks.ac.uk/primaryed](http://www.yorks.ac.uk/primaryed)

## Why study Product Design?

You will work in a range of diverse product design contexts which could include consumer goods, furniture, electronics, interactive media, interiors, sports products, transport, craft based production and design for industry. You will work with an extensive range of professional and industry standard materials and processes, media and IT, throughout your studio and workshop practice.

## What will I study?

Modules may include:

### Level 1

- The Design Process
- Computer Aided Design & Manufacture
- Understanding Users & Consumers
- Materials & Manufacturing Technologies

### Level 2

- Design in Business
- Design & Global Contexts
- Sustainable Product Design
- Preparation for Final Projects
- Work Placement

### Level 3

- Service Design Project
- Major Project
- Special Design Study

A full module list can be found on our website.

## How will I be assessed?

You will have regular tutorials throughout, particularly when you are planning your project work. You will normally be assessed through presentation of your course work at the end of each module. You will then receive written and verbal feedback on your progress.

## What sorts of jobs will our graduates get?

Many of our recent graduates are working as designers in well known organisations such as Umbro, BBC, Mothercare, Skopos, Nike, VW and Carleton Furniture. Others are running their own small businesses, some within our new DesignWorks incubator unit or studying at postgraduate level on our MBA Design Management programme.

### Heather Alstead

“The skills that I learned during my placement in the second year allowed me to compose the designs that led to the formation of my business.”

## Fact File

Specialist degree UCAS code  
W290

Attendance  
3 years full-time  
5-8 years part-time

Study abroad  
Yes - see page 83

Entry requirements  
200-240 points plus three GCSEs at grade C or above (or equivalent), including English Language.

How do I apply?  
Please see page 109

Get full course information at  
[www.yorksj.ac.uk/productdesign](http://www.yorksj.ac.uk/productdesign)



## Why study Psychology?

At its heart Psychology is about understanding people. You will study the human condition, to attempt to understand human behaviours and experiences and to use that understanding to try and predict future behaviours and experiences.

## What will I study?

This programme is accredited as conferring eligibility for the Graduate Basis for Chartership with the British Psychological Society provided the minimum standard of qualification of second class honours is achieved.

Modules may include:

### Level 1

- Introduction to Psychobiology
- Personality & Intelligence
- Introduction to Child Development
- Research Methods

### Level 2

- Social Psychology
- Psychology of Work
- Individual Differences
- Cognitive Psychology

### Level 3

- Conceptual & Historical Issues
- Clinical Psychology
- Imagery & Memory
- Psychology & Crime

A full module list can be found on our website.

## How will I be assessed?

Assessment methods include essays, experimental reports, verbal presentations, poster presentations, portfolios, larger scale research and some exams. The emphasis is very much on continual assessment.

## What sorts of jobs will our graduates get?

Our graduates possess a wealth of knowledge about human behaviour desirable in many professions such as personnel, business, health and community settings. A Psychology degree can lead to a career in aspects of applied psychology such as mental health, crime, education, research, counselling and sport.

### Emma Towning

“The psychology laboratory is a great facility but the staff make this degree what it is. They all have different strengths, a great deal of passion and are willing to give time to help you.”

## Fact File

Specialist degree UCAS code  
C800

Attendance  
3 years full-time  
5-8 years part-time

Study abroad  
Yes - see page 83

Entry requirements  
260 points plus three GCSEs at grade C or above (or equivalent), including English Language and Maths.

How do I apply?  
Please see page 109

Get full course information at  
[www.yorksj.ac.uk/psychology](http://www.yorksj.ac.uk/psychology)



# Religion & Education\*

## BA (Hons)

\*Subject to validation

[www.yorksj.ac.uk/religion&ed](http://www.yorksj.ac.uk/religion&ed)

### Why study Religion & Education?

Have you ever considered these questions: How is religion taught in British schools, and what issues arise from this? What is the role of faith schools? Will Religious Education survive in Britain and elsewhere in the 21st century? How do we learn, and how does this relate to spiritual development? These questions are all addressed within our degree programmes.

### What will I study?

Modules may include:

#### Level 1

- Education & Faith
- Education & Policy
- Introducing Islam
- Introduction to Asian Religions
- Values & Virtues: Ethics & Religion

#### Level 2

- How we Learn
- Education & Globalisation
- Religion & Human Diversity
- Buddhism in India and South East Asia
- Religion & Education

#### Level 3

- Religion Writing & the Creative Imagination
- Education & Contemporary Ethical Issues
- Religion & the Visual Arts
- Religion & Education Placement
- Independent Research Module

### How will I be assessed?

There are no formal examinations. Assessment is continuous and may include essays, group and individual presentations, timed assignments and reflective pieces on placement activities; creative writing; art.

### What sorts of jobs will our graduates get?

Most graduates will pursue teaching at primary, secondary and further education levels. Social services, social work and community projects are also popular destinations. Others look for a career within the commercial, business and industry sectors. Many go on to postgraduate qualifications.

## Fact File

Specialist degree UCAS code  
VX6H

#### Attendance

3 years full-time  
5-8 years part-time

#### Study abroad

Yes - see page 83

#### Entry requirements

200-220 points plus three GCSEs at Grade C or above (or equivalent), including English Language.

#### How do I apply?

Please see page 109

Get full course information at [www.yorksj.ac.uk/religion&ed](http://www.yorksj.ac.uk/religion&ed)

# Religion, Philosophy & Ethics\*

## BA (Hons)

\*Subject to validation

[www.yorksj.ac.uk/religionpe](http://www.yorksj.ac.uk/religionpe)

### Why study Religion, Philosophy & Ethics?

Have you ever considered these questions: How are ancient debates about the nature of reality still relevant today? How do films, art and literature communicate religious ideas? How might religious ideas and traditions guide our behaviour in a technological age? How do Eastern religions differ from those in the West and why are so many Westerners attracted to them today? These questions cover a wide range of ideas and issues, yet they are all addressed within our degree programmes.

### What will I study?

Modules may include:

#### Level 1

- Philosophy & Religion
- Introducing Islam
- Introduction to Asian Religions
- Values & Virtues: Ethics & Religion
- Foundations of Christian Theology

#### Level 2

- Christian Ethical Traditions
- Indian Philosophy
- Religion & Human Diversity
- Theology: Action & Reflection
- From Descartes to Irigaray – Philosophers & Religion

#### Level 3

- The Ethics of War & Peace
- Philosophies of Knowing – Science & Religious World Views
- Religion & the Visual Arts
- Buddhist Ethics
- Independent Research Module

### How will I be assessed?

There are no formal examinations. Assessment is continuous and may include essays, group and individual presentations, timed assignments and reflective pieces on placement activities; creative writing; art.

### What sorts of jobs will our graduates get?

Some graduates pursue teaching at primary, secondary and further education levels. Social services, social work and community projects are also popular destinations. Others look for a career within the commercial, business and industry sectors. Many go on to postgraduate qualifications.

## Fact File

Specialist degree UCAS code  
VV65

#### Attendance

3 years full-time  
5-8 years part-time

#### Study abroad

Yes - see page 83

#### Entry requirements

200-220 points plus three GCSEs at grade C or above (or equivalent), including English Language.

#### How do I apply?

Please see page 109

Get full course information at [www.yorksj.ac.uk/religionpe](http://www.yorksj.ac.uk/religionpe)

### Why study Religious Studies?

Have you ever considered these questions: Do the media portray an accurate picture of Islam? What do new religious movements such as Neo-Paganism or Wicca have to offer? How do Jews come to terms with the Holocaust? How do Eastern religions differ from those in the West and why are so many Westerners attracted to them today?

These questions are all addressed within our degree programmes.

### What will I study?

Modules may include:

#### Level 1

- Introducing Islam
- Introduction to Asian Religions
- The Sikh Tradition
- Introduction to Christianity
- Jewish Belief & Practice

#### Level 2

- Buddhism in India & South East Asia
- Reel Spirituality: Theology through Film
- Religion & Human Diversity
- Issues in Contemporary Judaism
- Hindu Texts & Practice

#### Level 3

- Islam in the Modern World
- Buddhist Ethics
- Women & Asian Religions
- Religion, Writing & the Creative Imagination
- Independent Research Module

A full module list can be found on our website.

### How will I be assessed?

There are no formal examinations. Assessment is continuous and may include essays, group and individual presentations, timed assignments and reflective pieces on placement activities, creative writing or art.

### What sorts of jobs will our graduates get?

Some graduates pursue teaching at primary, secondary and further education levels. Social services, social work and community projects are also popular destinations. Others look for a career within the commercial, business and industry sectors. Many go on to postgraduate qualifications.

## Fact File

Specialist degrees UCAS code V620

#### Attendance

3 years full-time  
5-8 years part-time

#### Study abroad

Yes - see page 83

#### Entry requirements

200-220 points plus three GCSEs at grade C or above (or equivalent), including English Language.

#### How do I apply?

Please see page 109

Get full course information at [www.yorks.ac.uk/religiousstudies](http://www.yorks.ac.uk/religiousstudies)

### Why study Sports Science for Performance Conditioning?

Increased media attention is raising the profile of sport. Sport and exercise scientists are becoming increasingly more important in achieving sporting excellence. In another sphere, there is continued spotlight on the benefits of sport and exercise for the well-being of all and reduction of obesity. These issues bode well for future employment prospects of sports science graduates. This programme has been endorsed by the British Association for Sport and Exercise Sciences (BASES).

### What will I study?

The foundations of the degree are the core discipline areas of physiology, psychology and biomechanics. At Levels 2 and 3 you will undertake specialist Sports Science for Performance Conditioning modules. You will also develop research skills which will progress towards completion of a dissertation at Level 3.

At all levels of study there is a personal and professional development strand which contains a work placement and opportunities to gain relevant vocational qualifications.

### How will I be assessed?

There is a 60:40 split between coursework based activities and examinations. The majority of work is assessed individually, however there are some tasks that require you to work as part of a group. You will be provided with feedback on how you are doing over the course of a module and help you prepare for the assessment tasks.

### What sorts of jobs will our graduates get?

Over 90% of our students gain employment or a place in further study after graduation. Our graduates enter the public, private and voluntary sectors of sport, for instance: strength and conditioning coaches/assistants, professional sports clubs, national governing bodies, leisure and fitness centres. You will also be well placed to become a BASES accredited sport and exercise scientist.

## Fact File

Specialist degree UCAS code C602

#### Attendance

3 years full-time  
5-8 years part-time

#### Study abroad

Yes - see page 83

#### Entry requirements

220-260 points plus three GCSEs at grade C or above (or equivalent), including English Language and Maths. (Level 2 Maths equivalencies are not accepted.)

#### How do I apply?

Please see page 109

Get full course information at [www.yorks.ac.uk/sportperf](http://www.yorks.ac.uk/sportperf)



## Why study Sport, Society & Development?

You will study the social, ethical and developmental aspects of sport. You will assess and apply government policies relating to sport from a variety of social and ethical viewpoints. You will also undertake and benefit from work-based experience and have the opportunity to take additional, vocational qualifications.

- **Personal & Professional Development:** you will undertake work-based learning and also develop a personal action plan. You will also have the chance to study additional vocationally-related qualifications for the sports industry.
- **Research methods:** you will develop your understanding of research and your skills as a researcher and produce your final dissertation.

## What will I study?

You will study four key themes:

- **Sport Development:** you will focus on the structure and provision of sport in the UK, the theories behind the policy formulation, and evaluate contemporary issues in sport development. You will also develop, manage and evaluate specific sport-related projects.
- **Social & Ethical Analysis of Sport:** you will analyse sociological and ethical perspectives of sport and take part in a contemporary sports issues forum. You will also study sport and spirituality.

## How will I be assessed?

About 75% of assessment will be based on course work, for example through essays, literature review, evaluative reports, poster and oral presentations. Most of the remainder of the assessment will be through examinations, including traditional, seen-questions and open book exams.

## What sorts of jobs will our graduates get?

Our graduates will be prepared to enter the public, private and voluntary sectors of sport, for instance within sports development, local authorities, national governing sports bodies, sports marketing, leisure and fitness management, government, youth development, charitable agencies, disadvantaged groups and probation service. You will also be well placed to study at postgraduate level.

## Fact File

Specialist degree UCAS code  
CL66

Attendance  
3 years full-time  
5-8 years part-time

Study abroad  
Yes - see page 83

Entry requirements  
220-260 points plus three GCSEs at grade C or above (or equivalent), including English Language and Maths.

How do I apply?  
Please see page 109

Get full course information at  
[www.yorksj.ac.uk/sportsociety](http://www.yorksj.ac.uk/sportsociety)

## Why study Sports Science & Injury Management?

The increased media attention around the 2012 London Olympic Games has raised the profile of sport and sport and exercise scientists who are becoming increasingly more important in achieving sporting excellence. In another sphere, there is continued spotlight on the benefits of sport and exercise for the well-being of all and reduction of obesity. Both of these issues bode well for future employment prospects of sports science graduates. This programme has been endorsed by the British Association for Sport and Exercise Sciences (BASES).

## What will I study?

The foundations are the core discipline areas of physiology, psychology and biomechanics. At Levels 2 and 3 you will undertake specialist Sports Science & Injury Management modules. You will also develop research skills which will progress towards completion of a dissertation at Level 3.

At all levels of study there is a personal and professional development strand which contains a work placement and opportunities to gain relevant vocational qualifications.

## How will I be assessed?

There tends to be a 60:40 split between coursework based activities and examinations. The majority of work is assessed individually, however there are also some tasks that require you to work as part of a group. You will be provided with feedback on how you are doing over the course of a module and help you prepare for the assessment tasks.

## What sorts of jobs will our graduates get?

Over 90% of our students gain employment or go on to postgraduate study. Our graduates enter the public, private and voluntary sectors of sport in professional sports clubs, sports injury clinics, sports massage therapist/rehabilitator, physiotherapy assistants, leisure and fitness centres. You will also be well placed to become a BASES accredited sport and exercise scientist.



## Claire Gurney

"The facilities are very modern and up-to-date and there are plenty of them for the number of students. The staff are very friendly and are all experts in their field and in using the equipment."

## Fact File

Specialist degree UCAS code  
CB6X

Attendance  
3 years full-time  
5-8 years part-time

Study abroad  
Yes - see page 83

Entry requirements  
220-260 points plus three GCSEs at grade C or above (or equivalent), including English Language and Maths. (Level 2 Maths equivalencies are not accepted.)

How do I apply?  
Please see page 109

Get full course information at  
[www.yorksj.ac.uk/sportscience](http://www.yorksj.ac.uk/sportscience)



## Why study Sports Science: Exercise Practice?

The increased media attention around the 2012 London Olympic Games has raised the profile of sport and exercise scientists who are becoming increasingly more important in achieving sporting excellence. In another sphere, there is continued spotlight on the benefits of sport and exercise for the wellbeing of all and reduction of obesity. Both of these issues bode well for future employment prospects of sports science graduates. This programme has been endorsed by the British Association for Sport and Exercise Sciences (BASES).

## What will I study?

The foundations of the degree are the core discipline areas of physiology, psychology and biomechanics. At Levels 2 and 3 you will undertake specialist Sports Science: Exercise Practice modules. Alongside these subject specific modules you will also develop research skills which will progress towards completion of a dissertation at Level 3.

In addition at all levels of study there is a personal and professional development strand which contains a work placement and opportunities to gain relevant vocational qualifications.

## How will I be assessed?

There tends to be a 60:40 split between coursework based activities and examinations. The majority of work is assessed individually, however there are also some tasks that require you to work as part of a group, for example poster presentations. On-going, formative activities are used on all modules to provide you with feedback on how you are doing over the course of a module and help you prepare for the summative assessment tasks.

## What sorts of jobs will our graduates get?

Over 90% of our students gain employment or go on to postgraduate study. Our graduates will be prepared to enter the public, private and voluntary sectors of sport for instance within leisure and fitness centres, fitness consultant, personal training, exercise referral consultant, health and lifestyle advisors within public health centres and physical activity promotion. You will also be well placed to become a BASES certified exercise practitioner.

## Fact File

Specialist degree UCAS code  
CB69

### Attendance

3 years full-time  
5-8 years part-time

### Study abroad

Yes - see page 83

### Entry requirements

220-260 points plus three GCSEs at grade C or above (or equivalent), including English Language and Maths. (Level 2 Maths equivalencies are not accepted.)

### How do I apply?

Please see page 109

Get full course information at  
[www.yorksj.ac.uk/exercise](http://www.yorksj.ac.uk/exercise)



## Why study Supporting Learning?

This degree provides opportunities for people working in education with children aged 3-16, whether in a paid or voluntary capacity, to gain a well recognised qualification. It combines learning in the workplace with study, with strong links between theory and practice. Course teaching is usually one twilight session (4.00pm - 8.00pm) each week making it ideal for those who wish to study whilst continuing to work.

## What will I study?

You will complete either 12 20-credit modules, or 11 20-credit modules and 140-credit module each module requires the equivalent of 24 hours of study at University.

All modules include contact time, tutorial time, workbased learning and independent study.

### Modules may include:

#### Level 1 modules\*

- Children's Learning & Development
- Effective Teaching & Learning
- Managing Behaviour
- Feedback & Assessment
- Providing for Inclusion
- Acquiring & Developing Language & Literacy
- Teams & Teamwork

### Level 2 modules\*

- Providing Pastoral Care & Support
- Supporting Additional & Special Educational Needs
- Creating an Environment for Learning
- Leading & Managing Teams
- Changing Context, Roles & Responsibilities
- Working with Parents & Families
- Independent Research
- Developing Literacies

\*These are equivalent to Levels 4 and 5 of the National Qualification Framework.

A full module list can be found on our website.

## How will I be assessed?

Assessment is likely to include writing essays and work-based reports, writing up case studies, giving presentations and producing teaching resources. There are no exams.

## What sorts of jobs will our graduates get?

Past students have become learning mentors, home school liaison officers and assistants to SENCOs. Foundation degree graduates can progress to the final year of the Education Studies BA (Hons) (see page 30) or the BA (Hons) Children, Young People & Families degree (see page 23).

## Fact File

YSJ code D2FDXE01X

### Attendance

One evening per week (4.00pm - 8.00pm) on a semester basis for 3 years

### Entry requirements

You will usually need:

- 3 GCSEs at grade C or above including English Language (or equivalent)
- Two A2 Levels (or equivalent)
- CRB clearance
- At least six month's experience of working with children or young people
- Employment, paid or voluntary, for at least the equivalent of one day per week in a relevant educational environment
- A letter of support from your employer

York St John has a flexible entry route for those who may have been out of education for a while.

### How do I apply?

Please see page 109

Get full course information at  
[www.yorksj.ac.uk/supplearn](http://www.yorksj.ac.uk/supplearn)

## Why study Theatre?

Throughout this programme you will explore a range of critical ideas and practice within Theatre, such as directing, devising, applied practice, theatre production and performance theory.

You can specialise in Theatre, Applied Theatre, Performance Practice or Performance Writing in Levels 2 and 3 and choose to be awarded a degree whose title reflects your specialism.

## What will I study?

You will study the contemporary significance of theatre-making as an art form by looking at specific practices and practitioners. You will also explore new ways of thinking about theatre, performance and audience, investigating the place and meaning of theatre within a wider context.

Modules may include:

### Level 1

- From Acting to Performance
- Introductions to Design & Performance Writing
- Theatre in Context
- Ensemble

### Level 2

- Multimedia Theatre
- Performance of the Self
- Theatre in a Social Context
- Site Specific Theatre

### Level 3

- Contemporary Theatre Practice
- Independent Practice as Research
- Dissertation

A full module list can be found on our website.

## How will I be assessed?

You will be assessed by a rich mix of practical and textual assignments ie group/solo performances, workshops, essays and zines.

## What sorts of jobs will our graduates get?

Theatre graduates are ideally placed for a range of careers within arts, media and education environments. Recent graduates have gone on to become theatre makers, community artists, primary and secondary school teachers, arts and events administrators and creative entrepreneurs.



## Fact File

Specialist degree UCAS code W400

**Attendance**  
3 years full-time  
5-8 years part-time

**Study abroad**  
Yes - see page 83

**Entry requirements**  
200-240 points plus three GCSEs at grade C or above (or equivalent), including English Language.

**How do I apply?**  
Please see page 109

**Get full course information at**  
[www.yorks.ac.uk/theatre](http://www.yorks.ac.uk/theatre)

## Six Lips

The Lips championed crowd interaction in their individual performance pieces at University - this forms the groundwork for their performances now. "We want the audience to go away having really experienced something, rather than simply watching us. The University helped us to pin down what we are good at."

## Why study Theology & Ministry?

This Foundation degree provides opportunities for people who are interested in vocational experience from a Christian perspective to explore faith, community and ministry. The programme is designed particularly around the needs of those wishing to become actively involved in a Christian context, perhaps through lay ministry of some kind. The Foundation degree also provides an interesting context from which to study Christianity for those with a general interest in Theology but without any particular vocational ambitions.

## What will I study?

### Level 1

The Level 1 modules focus on developing skills required to relate academic study to placement contexts and include:

- New Testament
- Old Testament
- Mission & Ministry
- Elements of Christian Worship
- Ethics
- Christian Faith in History

### Level 2

Level 2 modules focus more closely on the vocational application of insights gained at Level 1 and may include:

- Patterns of Christian Spirituality
- Communicating the Christian Story
- Ministry & Praxis
- Independent Learning Unit
- Working with Children & Young People
- Pastoral Care

Most of the modules include some placement-based learning providing opportunities to make links between study and the placement context.

## How will I be assessed?

Assessment strategies include taking part in group discussions, group presentations, placement reports, essays and analysis of texts.

## What sorts of jobs will our graduates get?

The programme is used by the Dioceses in the Yorkshire region to provide training for a variety of ministries, including readers, and ordinands. In addition, a number of students take the course to engage in theological study for their own interest. Foundation degree graduates can progress to the Theology & Ministry BA (Hons) degree.

The BA programme is also open to those with a Diploma in Theology or other equivalent ministerial qualifications.

## Fact File

YSJ code D2FDTHMX

**Attendance**  
Part-time, normally one evening per week, over four years.

**Entry requirements**  
You will need: 3 GCSEs at grade C or above including English Language, plus either

- Two A2 Levels or equivalent or
- Successful completion of Level 1 module

**How do I apply?**  
You should apply direct to York St John. Please contact the Programme Administrator:  
T: 01904 876429  
E: [FDTM@yorks.ac.uk](mailto:FDTM@yorks.ac.uk)

**Get full course information at**  
[www.yorks.ac.uk/theomin](http://www.yorks.ac.uk/theomin)



### Why study Theology & Religious Studies?

Have you ever considered these questions: Do the media portray an accurate picture of Islam? How do Jews come to terms with the Holocaust? How do films, art and literature communicate theological ideas? How can Christian Theology respond to the issues of the modern world: environmental care; new technologies; the equal opportunities agenda? These questions are all addressed within our degree programmes.

- Engaging in Theology
- Philosophies of Knowing - Science & Religious World Views
- Religion & the Visual Arts
- Independent Research Modules

A full module list can be found on our website.

### How will I be assessed?

There are no formal examinations. Assessment is continuous and may include essays, group and individual presentations, timed assignments and reflective pieces on placement activities; creative writing; art.

### What will I study?

Modules may include:

#### Level 1

- Introducing Islam
- The Sikh Tradition
- Values & Virtues: Ethics & Religion
- Introduction to Christianity
- Jewish Belief & Practice

#### Level 2

- Buddhism in India & South East Asia
- Reel Spirituality: Theology through Film
- Christian Theologians
- New Testament Themes
- Issues in Contemporary Judaism

#### Level 3

- Religion Writing & the Creative Imagination

### What sorts of jobs will our graduates get?

Some graduates pursue a teaching career or move into ministry. Social services, social work and community projects always prove popular destinations. Others will go into the commercial, business and industry sectors and many go on to postgraduate qualifications.

*97% of Theology & Religious Studies students were satisfied with the quality of their course (NSS 2011).*

### Fact File

Specialist degree UCAS code V600

Joint Honours degree  
Theology & Religious Studies and  
Education Studies VX63

Attendance  
3 years full-time  
5-8 years part-time

Study abroad  
Yes – see page 83

Entry requirements  
200-220 points plus three GCSEs at grade C or above (or equivalent), including English Language.

How do I apply?  
Please see page 109

Get full course information at [www.yorks.ac.uk/theo&rs](http://www.yorks.ac.uk/theo&rs)

### Why study Tourism Management?

Tourism is one of the world's largest and fastest growing industries. This degree will give you the opportunity to develop skills and knowledge that will help you develop a management career in the tourism industry.

### What will I study?

A general grounding in tourism and management is obtained at Level 1 followed by opportunities to select more advanced topics at Levels 2 and 3.

Modules may include:

#### Level 1

- Tourism Industries
- Organisations, Competition & Environment
- Web Design
- Economics & Finance
- Organisational Behaviour
- Marketing & Operations Management

#### Level 2

- Cultural & Heritage Tourism
- Travel & Tourism Marketing
- International Trade & Globalisation
- International Finance
- Professional Experience & Development

#### Level 3

- Tourism Policy & Planning
- Responsible Tourism
- International Business Economics
- Consumer Behaviour
- Developing e-Commerce Applications
- Independent Study

A full module list can be found on our website.

### How will I be assessed?

Methods of assessment are varied and will include essays, learning journals, tests, reports, projects, posters and oral presentations.

### What sorts of jobs will our graduates get?

Graduates will be equipped for a variety of management careers. Employment opportunities include; general management, transport, accommodation, hospitality, attractions, tour operators and tourism agencies.

### Fact File

Specialist degree UCAS code N832

Attendance  
3 years full-time  
5-8 years part-time

Study abroad  
Yes – see page 83

Entry requirements  
200 points plus three GCSEs at grade C or above (or equivalent), including English Language.

How do I apply?  
Please see page 109

Get full course information at [www.yorks.ac.uk/tourismman](http://www.yorks.ac.uk/tourismman)

*York is the best tourist destination in the UK for a group visit according to readers of a travel magazine. (June 2011)*

# Tourism Management & Marketing

## BA (Hons)

[www.yorks.ac.uk/tourman](http://www.yorks.ac.uk/tourman)

### Why study Tourism Management & Marketing?

This course is aimed at those who wish to develop their tourism knowledge and skills along with marketing capabilities. You will have the opportunity to develop managerial skills and perspectives and gain valuable experience in a range of management situations.

### What will I study?

You will get a general grounding in tourism management and marketing at Level 1 followed by opportunities to select more advanced topics at Levels 2 and 3.

Modules may include:

#### Level 1

- Tourism Industries
- Marketing & Operations Management
- Organisations, Competition & Environment
- Organisational Behaviour
- ICT & Study Skills
- Foreign Language

#### Level 2

- Travel & Tourism Marketing
- Marketing Practice
- Cultural & Heritage Tourism

- Professional Experience & Development
- Research Methods for Business
- Foreign Language

#### Level 3

- Tourism Policy & Planning
- Responsible Tourism
- International Marketing
- Consumer Behaviour
- Independent Study

A full module list can be found on our website.

### How will I be assessed?

Methods of assessment are varied and will include essays, learning journals, tests, reports, projects, posters and oral presentations.

### What sorts of jobs will our graduates get?

Graduates who successfully complete the course have the potential to apply their skills to careers in all aspects of tourism. Employment opportunities include; destination management, tour operators, attraction management, hospitality and heritage industry.

## Fact File

Specialist degree UCAS code  
NN85

#### Attendance

3 years full-time  
5-8 years part-time

#### Study abroad

Yes - see page 83

#### Entry requirements

200-240 points plus three GCSEs at grade C or above (or equivalent), including English Language.

#### How do I apply?

Please see page 109

Get full course information at [www.yorks.ac.uk/tourman](http://www.yorks.ac.uk/tourman)

*York attracts over 7.1 million visitors a year who spend over £443 million.*

### Why study Working with Children & Young People?

Recently the children's services have been transformed by the shift towards an integrated inter-agency approach where children's welfare, including their social care, educational and health needs, is viewed holistically. This course aims to develop your understanding of key issues in this area. It also aims to prepare you for future career development as part of the Wider Children's Workforce.

### What will I study?

Course teaching will be one twilight session (4.00pm - 8.00pm) per week. You will complete either 12 20-credit modules or 11 20-credit modules and 1 40-credit module. An emphasis will be placed on learning in the workplace through reflection and research.

Modules may include:

#### Level 1\*

- Children, Young People & Values
- Effective Communication & Developing Positive Relationships
- Working with Parents & Families
- Understanding Children's & Young People's Development
- Safeguarding Young People & Children
- Teams & Team-working within the Children's Workforce

# Working with Children & Young People

## Foundation degree

[www.yorks.ac.uk/childrenfd](http://www.yorks.ac.uk/childrenfd)

- Working with Children & Young People with Disabilities

#### Level 2\*

- Independent Practitioner Research
  - Understanding Care in a Multi-Agency Context
  - Leading & Managing Change Within a Professional Caring Context
  - Issues of Inclusion & the Wider Children's Workforce
  - Leading Multi-Agency Teams
  - An Introduction to the Construction of Social Policy
  - Understandings of Mental Disorders
- \*These are equivalent to Levels 4 and 5 of the National Qualification Framework.

### How will I be assessed?

Assessment will include writing essays and work-based reports, writing up case studies, giving presentations and producing teaching resources. There are no exams.

### What sorts of jobs will our graduates get?

On successfully completing this degree in Working with Children & Young People, you can choose to progress to Level 3 of our BA (Hons) degree in Children, Young People & Families. Alternatively you may gain employment and/or further career progression within the Wider Children's Workforce.

## Fact File

YSJ code  
Part-time D2FDWCYPX

#### Attendance:

One evening per week (4.00pm - 8.00pm) on a semester basis for 3 years.

#### Entry requirements:

You will usually need:

- 3 GCSEs at grade C or above including English Language (or equivalent)
- Two A2 Levels (or equivalent)
- Satisfactory CRB check

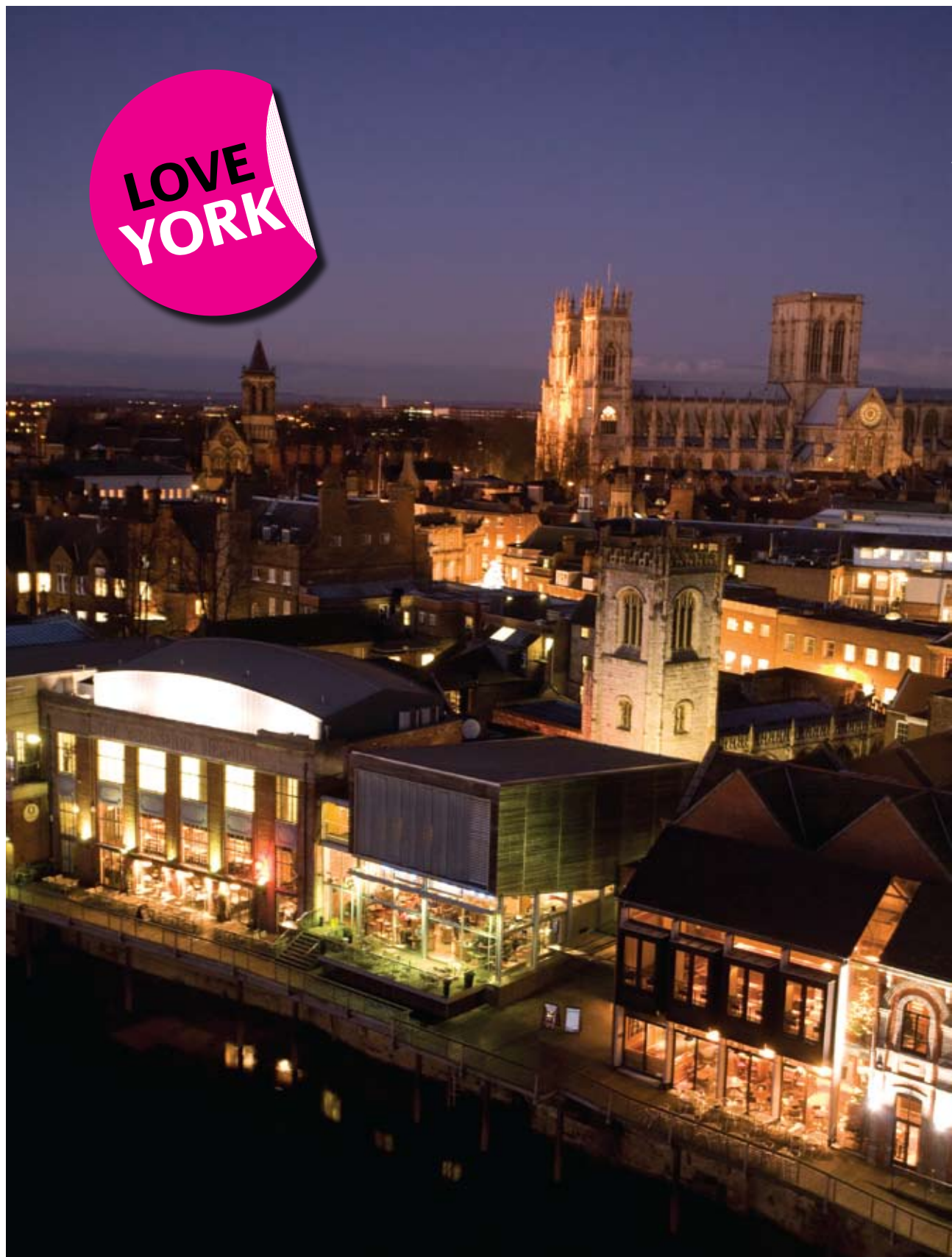
You should have access to a workplace where you engage in work with children and/or young people. This might be through an existing paid employment role or through gaining access to a relevant long-term voluntary placement. Students come to us with a range of qualifications, so please contact us for personal advice.

#### How do I apply?

Please see page 109

Get full course information at [www.yorks.ac.uk/childrenfd](http://www.yorks.ac.uk/childrenfd)





## ...a remarkable city.

With around 20,000 students and thousands of tourists visiting the city all year round, York really is a lively place to be. It's great for nightlife of all kinds, it has restaurants, pubs, wine bars and cafés to suit every taste imaginable and it's fantastic for shopping. York St John is literally minutes away from the city centre, so is perfectly placed for nights out and retail therapy jaunts.

### Eating and drinking

York is said to boast 365 pubs - one for every day of the year! There's something for every taste and pocket, with special rates and student discounts to be found. The city is also brimming with bistros, restaurants and cafés – just choose to suit your mood and your price range.

### Nightlife

York's nightlife caters for all, from traditional and quirky pubs, to ghost walks, cinemas and theatre, to the lively, modern and vibrant bars, clubs and live venues – York really does have it all.

To start your night look no further than the Students' Union, with a variety of entertainments to suit every taste, it is true 'value for money'. Alongside great drinks offers throughout the week, it is the perfect place to meet your friends and for pre-club warm ups.

Most of the bars are located within the city walls and within walking distance of each other and York St John.

York has many late night bars and clubs catering for every music taste from rock to cheesy pop. Commercial bars such as Revolution and Yates are complimented by independent and popular bars such as Evil Eye and Vudu Lounge. They are open every day and often have themed nights with student-friendly prices. There are a variety of different clubs in the city; Tokyo, Gallery, Salvation and Fibbers - a live music venue to suit all tastes. All in all York boasts a great night out for everyone.

### Shopping

York is paradise for shopaholics - everything from famous high-street names to intriguing specialist, designer and curiosity shops. The outdoor Newgate Market, in the centre of the city, offers a more traditional shopping experience, with stalls selling everything, all at brilliant student-friendly prices.

York also hosts a variety of specialist markets which arrive each month and offer a taste of local and international produce.

In September the UK's largest Food Festival takes over the city for 10 days and one of the largest Christmas markets, the St Nicholas Fayre, arrives just in time for those last minute presents.

There are three out-of-town shopping centres, all within easy reach of the city centre. At Clifton Moor there are shops galore plus a Vue cinema and tenpin bowling. Monk's Cross Shopping Centre has a layout like a classic American shopping mall with many high street stores and the McArthur Glen Designer Outlet features over 100 designer name stores full of best buys!

The city is constantly ranked as one of the best tourist places to visit.

York topped a list of the friendliest places to live in the UK and we can also lay claim to having the most picturesque street in Britain.

## Let's get cultural

Shopping and socialising aside, you can't fail to notice York's history and culture. It's hard not to find history fascinating when it lives and breathes around you. York Minster is world renowned and well worth a visit. The city's Viking heritage comes to life every year in a rowdy, fun-packed festival with hoards of Vikings taking occupation of the streets. You can also step aboard a time car in the world-famous Jorvik Viking Centre to travel back to 948AD. The condemned cell - where the infamous highwayman, Dick Turpin, spent his last night in 1739 - lies within the walls of York Castle Museum. The National Railway Museum is not just for train spotters (so we're told!) and you can even catch the plague at the York Dungeon.

The arts feature strongly in York's cultural life. The York Mystery Plays continue a tradition of community performances dating back to the 14th century. Contemporary drama, and much more besides, is on offer at the Theatre Royal and the Grand Opera House. Film buffs will appreciate City Screen - an arts cinema housed in a refurbished printing works. Music, in all its guises, finds an audience in a variety of venues across the city.

The recently refurbished York Barbican hosts the UK snooker championship as well as offering comedy, music events and family shows.



Newgate market has stalls selling everything, all at brilliant student-friendly prices.

## Further afield...

York is also a fantastic starting point from which you can explore more of what Yorkshire has to offer. The Yorkshire Dales and North York Moors are both National Parks, accessible by public transport, where you will find incredible scenery and bracing, fresh air. The seaside resorts of Scarborough and Whitby also make the perfect destination for a day out (and do great fish and chips).

- Delve into York's darker past and go on a ghost walk!
- Visit at least one of the 365 bars and pubs York has to offer!
- See the city from a different angle and walk a stretch of the medieval city walls or get a bird's eye view from the top of the Minster!
- Check out some of the smaller, independent stores that are off the beaten track for a different shopping experience.
- Take advantage of York Resident's Festival and go and see some of the most popular tourist attractions for free!
- Taste some fresh local produce or a continental delight from one of the many stalls at the markets and festivals held in the city throughout the year.
- Set sail along the picturesque River Ouse on a YorkBoat cruise or try your hand at steering and rent a smaller red boat!
- Keep an eye out for gigs and shows across the live music venues and theatres in York. Enjoy getting student discount on your ticket as well!
- Take your favourite book (or even some essay notes!) and relax in the historical surroundings of the Museum Gardens during a lazy summer afternoon.
- Explore North Yorkshire a little further by heading into the beautiful surrounding countryside or make use of York's excellent railway links and venture to other major cities across the country!



[www.yorks.ac.uk/studentviews](http://www.yorks.ac.uk/studentviews)

# Amy's top things to do in York





## A home from home

Our students come from all parts of the UK and abroad to study with us. Some, who live within travelling distance, choose to live at home. If you need accommodation, our staff in the Accommodation Office can give you advice on what's available and help you find the right place to live.

### Our accommodation

We offer accommodation in a variety of styles on a number of sites across the city, all within 20 minutes walk. See below for more information.

If you decide that you wish to study at York St John University and make us your firm choice and wish to live in University accommodation, it is very likely you will be able to do so. Accommodation is allocated according to a set of priorities including disability and distance from home. We will send you full information together with an Accommodation Application Form, usually by e-mail.

You can also apply for limited places in halls during any year of your studies. We can also help you find alternative accommodation if required, by providing information on a wide variety of private sector lodgings/houses and flats in York.

Car parking at York St John is very limited as we are a city-centre campus and car parking for students in accommodation is only available on health grounds.

### What's available?

We offer accommodation in University-owned and managed residences on both a semi-catered and self-catered basis. Over 600 of our rooms are en-suite. All main sites are semi-covered by CCTV.



### Semi-catered accommodation

#### Lord Mayor's Walk

Residences are arranged in small blocks around lawned gardens in the centre of the main campus, in its attractive setting next to the city walls and York Minster, just minutes from the city centre. All rooms are single with a washbasin, and bathrooms are shared. Each block has a small kitchen area on each floor. WiFi facilities are available in this accommodation. Currently, the semi-catered package for students living at Lord Mayor's Walk provides a catering payment card which you can use around campus as you wish.

### Self-catering accommodation

#### Percy's Lane and Gray's Wharf

Percy's Lane, our fantastic, purpose-built, self-catering en-suite accommodation can house 272 students. Gray's Wharf, next door to Percy's Lane comprises of 235 bedrooms. These smart facilities are located within the city walls and next to a wide variety of local amenities, just 10-15 minutes walk from the University campus.

The accommodation is split into cluster flats with en-suite facilities, for small groups of students, and self-contained studio flats. All rooms have Internet access.



### City Residence

This en-suite development is approximately seven minutes walk from the main campus. The 25 flats provide 124 en-suite single study bedrooms with links for Internet access. Each flat has a shared kitchen.

### Limes Court

This development is about 15 minutes walk from our main campus. It currently offers smart self-catering facilities to 143 students. Each bedroom has Internet access. Kitchens and bathrooms are shared (two shower rooms in each house of five students).

### The Grange

The Grange residence is set in its own landscaped grounds about 10 minutes walk from the campus. The 51 flats and 36 houses provide 416 self-catered student rooms. Each house/flat has a shared kitchen and bathroom and some have a lounge area. WiFi facilities are available at the Grange.

### University-managed houses

We operate a scheme with local landlords whereby a number of properties, all of which are within walking distance of the University, are privately owned but managed by the Accommodation team to ensure they meet the requirements of the Code of Best Practice.

### Private accommodation

Some students prefer to live in houses and flats rented from private landlords. The Accommodation Office can help you find this type of accommodation. We only advertise properties that comply with The Code of Best Practice for Student Accommodation.

### How much does it cost?

University self-catered accommodation is available on the basis of a 44, 46 or 48-week tenancy and costs in the region of between £80 and £150 per week. These fees vary according to the category of the room. The charge for a weekly semi-catered package is in the region of £130 per week. This charge is based on a 33-week tenancy.

Private accommodation in York can cost between £70 and £80 per week.

## New accommodation coming soon!

We are currently working in partnership with a local developer to provide an additional 250 en-suite rooms on a site close to the University and the city walls. Check out [www.yorks.ac.uk/accommodation](http://www.yorks.ac.uk/accommodation) for updates!

### Code of Practice

York St John has signed up to the Universities UK (UUK) Accommodation Code of Practice, which provides good practice guides for University halls of residence. For further information visit [www.universitiesuk.ac.uk/acop](http://www.universitiesuk.ac.uk/acop)

### If you have a disability

As soon as we know you have specific requirements in relation to accommodation, the Accommodation Office will liaise with you and the Disability Advice Team to make sure you are placed in the most suitable accommodation.

### Residential Support Team

Managed by the Accommodation Office, the Residential Support Assistant Team is there to make sure you are safe and supported in your accommodation. See page 85 for more information about what the team can do for you and how you can get involved.

### How can I find out more?

For up-to-date information about accommodation, please contact the Accommodation Office  
T: 01904 876660/876409  
E: [accommodation@yorks.ac.uk](mailto:accommodation@yorks.ac.uk)  
or visit [www.yorks.ac.uk/accommodation](http://www.yorks.ac.uk/accommodation)



# Your Students' Union

“If you want to really get the most from your years at Uni, get involved with your Union.”

Leigh Hankinson, SU President



Your Higher Education studies will almost certainly be the most enjoyable and significant years of your life. But studying is only one part of the student experience.

As a York St John University student, you automatically become a member of the Students' Union. This gives you access to all the services we provide from emotional and academic support, advice and representation through to clubs, societies, volunteering and entertainment. We believe that University can transform your life and we want to help you do that in whatever way you want.

The Students' Union is a democratic organisation - students elect other students to run it on their behalf.

Union officers are elected each year to represent your interests at every level within the university and outside in the local and national communities. We represent every aspect of our student body and are continually looking for ways to make things better from removing parking charges on campus for disabled students to improving catering for first year students on campus.

And yes, we do have a bar, albeit a little less dramatic than the one in Hollyoaks. We also have a shop and a café so everything you need is provided on campus in a building where there is always something going on – from film showings to salsa classes, live music to fashion shows, freecycling to yoga.

Watch our SU videos @ [www.youtube.com/theysjsutube](http://www.youtube.com/theysjsutube)

Try new sports, show off your creative talents, become a campaigner...

...and much more!







Get involved...

Whatever your age, background or culture, coming here is the best opportunity you will ever have to broaden your horizons.

You can:

- try new sports
- show off your creative side through our variety of performing societies
- become a campaigner
- take up a new hobby
- build your CV through taking on organising roles
- give something back to the local community through volunteering
- help your fellow students by becoming a Programme Rep
- change what goes on in the Union by joining the Entertainments team
- raise loads of money for charity through Raise and Give (RAG).

The list goes on and on. If the activity you're interested in doesn't currently exist, let us know and we'll happily help you make it happen!

### Sports and Societies

The Students' Union supports a whole range of student-run clubs and societies, increasing in numbers and diversity every year. We offer everything from Musical Production Society (MPS) to netball and mature students' society to snow sports. New clubs and societies are starting up all the time and if we're not offering what you're looking for, all it takes is ten like-minded individuals to start up your very own sports or society!

### What else can we offer you?

The Students' Union runs a variety of commercial services. The shop, internet café, bar and a diverse and exciting array of entertainments are all very much at the heart of what we do.

We encourage you to use the Students' Union as much as possible because of the friends you will meet, the skills you will gain and the most enjoyable of experiences you will have. We aim to provide a high quality entertainment programme in a safe, friendly environment that will offer something for everyone at value for money.

The Students' Union also works towards the main event of the academic year - The Summer Ball. We feel that because you have worked so hard over the year you deserve to let your hair down in style. The entire campus is closed down and turned into one big carnival event with funfair rides, bands, and adult inflatable games - an experience not to be missed!





## Sport and recreation

We all know that physical activity is good for our health and wellbeing. That's why York St John have YSJActive, an entire department geared towards providing an exciting range of opportunities for sport, exercise and recreation. So, whether you want to improve your health and fitness, or seek competition YSJActive has something for you!

### Our sports facilities

The Sports Hall has four badminton courts, a climbing wall and facilities for netball, volleyball, basketball, cricket, badminton and five-a-side football. Our fully-equipped Fitness and Conditioning Suite provides a great combination of cardiovascular, fixed and free weights. Whatever your goal, our fully-qualified instructors are always on hand to provide advice and guidance, ensuring that you get maximum benefit from your training. Within easy walking distance, our sand-based and flood-lit all-weather facility has a full sized hockey pitch, changing rooms and also accommodates five or six a-side football and rugby training. Our Hull Road Sports Ground has three grass football pitches and a new changing pavilion.

### Health and fitness programme

YSJActive offer a great range of health and fitness classes throughout the academic year. Classes are led by fully-qualified fitness instructors and are designed for all abilities on a pay-and-play basis. So whether it's the buzz of zumba and circuits or simply a longing to recharge mind, body and soul through our yoga and pilates classes, then look no further!

### Exercise industry qualifications

Each year we offer a range of Active IQ qualifications. The Level 2 Gym Instructor qualification allows registration onto the Register of Exercise Professionals. Other courses include circuit training, adapting gym for adolescents, massage and nutrition. These courses form an essential entry route towards employment and a career in exercise instruction.

### Coach education and community volunteer programme

If you are contemplating a career in sports coaching, sports development or teaching, our coach education and community volunteer programme will give you a valuable head start by offering you the opportunity to gain vocationally relevant qualifications and coaching experience whilst at University. Typical National Governing Body approved courses and awards available are in sports such as athletics, badminton, netball, basketball and dodgeball. We also offer Sport Coach UK workshops and first aid courses. So that you can combine these awards with some real coaching and development experience in York and North Yorkshire we can provide the opportunity and support you need to enhance your CV and to put your new-found skills into action.

Our successful YSJ Inclusive Activity Club works hard to offer inclusive activity and sporting opportunities including Boccia, New Age Curling, Goalball and Wheelchair Basketball. Courses and subsequent volunteer opportunities are available through bodies such as the English Federation of Disability Sport. In 2010 students who undertook the Goalball training course assisted at the Goalball World Championships in Sheffield.

**More people, more active, more often... come and join in at YORK ST JOHN!**



### Performance support

York St John is an Academic Partner Institution for the national Talented Athlete Scholarship Scheme, known as TASS. This means that we work with the regional lead institution in supporting our talented sports students. To be eligible, all student athletes must be nominated each year by their National Governing Body (NGB) in order to receive an annual scholarship. In the first instance, we would recommend you contact your regional NGB representative for further information or visit [www.tass.gov.uk](http://www.tass.gov.uk)

For those seeking to develop levels of athletic performance, YSJActive staff are qualified and experienced in sport and exercise science. So if you are looking to get into serious competition or for help to achieve your first marathon, come and get some professional advice in the sports science laboratories. Such support can include nutritional advice, sport psychology, physiological testing, strength and conditioning and performance programming.

### At the heart of community sport

At York St John we are committed to making a difference and that's why many of our staff and students are actively involved in helping to develop sport within the community. We have great links with key national, regional and local sports organisations including Sport England, Sports Coach UK and BASES. The University also plays a strategic role in Active York – the City's Community Sports Network and North Yorkshire Sport, our County Sports Partnership.

# Take the plunge... try something new

90% of our graduates (2010) were in employment or full-time study six months after graduating. We understand that employers are looking for that little bit extra when assessing job applications. Therefore we ensure that you have access to a fantastic range of opportunities to develop your strengths, learn new skills, gain invaluable work experience and beef up your CV.

There's so much more to life at university than just studying...



## Study abroad

Why not spend part of your degree studying abroad? Specially designed exchange schemes are available with a number of prestigious institutions in a variety of European countries. For EU exchanges you will be eligible for an ERASMUS scholarship of approximately £240 per month, to supplement your income in covering the extra expenses of living abroad.

Or, you can spend half a year studying abroad at a college in North America on most of our degree programmes. In North America we have negotiated special bed-for-bed schemes, whereby you pay for accommodation and food on your home campus before leaving and simply change places. This gives you an opportunity to be fully involved in the stimulating environment of a typical North American college campus.

Going on exchange will not add any time onto your degree, for you simply spend one semester or one year studying your subject in another country. Your tutors will help you choose modules to ensure that they fulfil your degree requirements at York St John. Furthermore, when studying at one of our partner institutions, you will not have to pay foreign tuition fees.

Exchange opportunities are also available in Australia, Japan and China.

### Studying abroad allows you to:

- Be independent and gain confidence.
- Get a new perspective on your studies.
- Improve your knowledge of another language.
- Experience a new culture.
- Travel and widen your horizons.

### To find out more

E: [studyabroad@yorks.ac.uk](mailto:studyabroad@yorks.ac.uk)  
T: 01904 876883 or visit  
[www.yorks.ac.uk/international](http://www.yorks.ac.uk/international)



Chloe, an English Literature and History student spent her exchange at Rovira i Virgili University in Tarragona, Spain

"I had such an amazing time on my exchange in Spain that I went for a semester and ended up staying a year! My experience has definitely made me a more confident and independent person. I made close Erasmus friends and we explored Spain together. I think my experiences will make me stand out from other graduates after my degree and show I am an adventurous, independent person with a wide range of skills and experience with building international relations."



## Enhancing your employability

At York St John we can help you kick start your career with a range of opportunities to develop your strengths, learn new skills and gain valuable work experience.

YSJ Connect is a comprehensive, online database of opportunities for you including:

- part-time jobs in York
- national and international graduate vacancies
- internships
- work placements
- volunteer opportunities.

Visit [www.yorks.ac.uk/ysjconnect](http://www.yorks.ac.uk/ysjconnect) for more information.

### Part-time work

We ensure that you have access to a fantastic range of part-time jobs to earn some money, boost your employability and have fun! Jobs on campus include Student Ambassador, Disability Support Workers and Sports Assistants. The Students' Union also offers work in their bar, café, shop and on reception.

As the University is located in the heart of the city, you will also have access to many jobs in the wider community including working with York Museums Trust, Sports Coaches, Playworkers, Front of House at the Grand Opera House, Tour Guides and School Mentors as well as jobs in retail and hospitality.

### Internships

At York St John University you can apply for internships which provide valuable, paid work experience in a range of industries. Internships are available while you are studying and also when you graduate.

Our successful graduate internship programme has seen our graduates gaining experience as film-makers, in graphic design, mentoring in schools, working on a national arts magazine, a local lifestyle magazine and as event organisers.

### Graduate careers

In a competitive jobs market, making your application stand out from the crowd can make all the difference. Our Career Development Advisers can provide one-to-one assistance on all aspects of applying for a job, from where to look for vacancies, targeting employers, writing a supporting statement, through to interviews and selection tests.

### Careers Mentoring Programme

Take advantage of support from a York St John University graduate or a member of the local business community. Benefits include: opportunities to network and make contacts; development of employability skills and practical advice on job search techniques.

### Business Start Up

York St John University students interested in self-employment can access a range of funding and support, from one-to-one advice and guidance, workshops and presentations to the opportunity, on graduation, to apply for business incubation space.

## Preparing you for your future

We have close links with local employers and offer access to a range of graduate, part-time, voluntary and internship opportunities. The Careers & Employability team works closely with academic staff to embed employability and career planning into the curriculum. Combined with 1:1 interviews and a programme of workshops and presentations, you are encouraged to explore your options and learn how to articulate your skills and experience successfully in job applications, CVs and interviews.

At every stage of your degree programme we can offer information, advice and guidance on:

- Career choice
- CVs
- Job search, application and interview skills
- Work placement and internship opportunities
- Work and study overseas
- Further study
- Vacation work at home and abroad
- Volunteering
- Part-time jobs in York
- Business start-up



### Student representation

There are plenty of opportunities for you to have a say in how your education and academic services are delivered. Programme reps make a real difference and develop skills in communication, negotiation, presentation and teamwork.

### Mentoring

Mentoring is a great way to get experience of working with young people, develop your interpersonal skills and make a real difference. Our mentors receive full training and work closely with school students, providing them with support and encouragement.

### Residential Support Assistants

By becoming a residential support assistant, you can help to ensure that fellow students are happy and safe in their accommodation. This a great role for improving your leadership, communication and interpersonal skills.

Students volunteered over 45,000 hours during last year to support a wide range of community projects.

### Student Ambassadors

Join our team of student ambassadors and represent York St John at school and college visits, open days and external events. You will develop excellent communication and presentation skills.

There are also opportunities to get involved with social media, blogging, photo shoots and much more.

"When I started the Student Ambassador role, I was so nervous because I didn't know what to expect. I really like it when we have a group of secondary school children, because they might just think it's a day out, but will really pay attention to what you are saying and it is a very positive feeling to be passing on my experiences to others."

Fiona Hill



# Starting out...

## helping you take the first steps to a successful business

We are here to support and encourage you to make the most of your time at York St John and to seize the many new and exciting opportunities available to you.

In addition to our Careers & Employability Team there is expertise across the University and our students can benefit from a wealth of advice and opportunities from staff who are dedicated to developing relationships with employers, entrepreneurs and business start-up experts. For students considering starting up their own business we run workshops in developing business ideas, marketing, finance and business planning. You can also bid for funding to develop your business ideas and participate in enterprise fairs. We are here to help our emerging entrepreneurs get their business ideas off the ground!

### Business start-up, incubation and growth

#### York St John Business School

Setting up a business might be an excellent option during your studies or after graduation. If you are looking for support and expertise, connect with York St John Business School staff. Aspiring entrepreneurs have benefitted from participating in The Acorns Start-Up Business Programme, where they meet with like-minded

people, learn from each other and welcome local business people and professionals. Many of them are now successful entrepreneurs.

In addition, the Business School's partnerships with local, national and international organisations enable students, staff and alumni to exchange and share current knowledge and ideas. Don't take our word for it, see what others think of our high profile quality business events:

"I learnt a lot more about business and (more surprisingly) about myself - and gained some new friends into the bargain!"

"The discussions gave me ideas and inspiration for my studies particularly with regards to marketing."

#### DesignWorks

The DesignWorks business incubator in our Design Centre provides support for up and coming businesses in the world of product design. This on-campus facility offers free business mentoring and advice, office space, academic expertise and advice in product design and workshop access.



John Green Designs is one of the businesses which has benefitted. John says: "The workshop space has all of the cutting-edge equipment and technology required for me to make prototypes of my designs before they are manufactured." John graduated in 2008 and has since won various awards, including two prestigious prizes for his unique furniture design at the 2010 Homes & Gardens Classic Design Awards and highly commended in the Grand Designs Product of the Year 2011.



#### The Phoenix Centre

The Phoenix Centre, now in its third year, was launched to kick start the development and growth of a new generation of creative and digital businesses for the region. The incubation facility provides affordable space with access to specialist technical facilities and sector-specific business support, mentoring and training for new creative and IT-based ventures.

One of the current occupants is Orillo Productions, a film production company of five graduates. Within a few months of joining the centre, they went from part-time to full-time, working internationally with clients such as the well-known clothing retailer Jack Wills and the world's oldest jeweller, Garrard. The Phoenix Centre offers a friendly, supportive and mentoring environment that encourages innovation and collaboration for those looking to start their own business.





## Supporting you

Being a student is exciting and a lot of fun. It also involves a lot of hard work, and for some, it means moving away from home for the first time. For many, it involves a whole new way of life!

At York St John, we're keen to make sure that every part of your student life is as successful and happy as it can be. Our student support teams are available to you at any time throughout your student life, to make sure you get the best out of your time at University.

### We're here to help you succeed

We offer all students a programme of events and a comprehensive introduction to university life and study skills, usually just before the first semester begins and also during Welcome Week. For some students, this gives a welcome introduction to becoming a university student for the first time!

We pride ourselves on our reputation for putting students at the heart of everything we do and we offer a significant and valued range of support. Our external Quality Assessors regularly rate this aspect of our provision as outstanding.

### Putting you first

We realise that everyone has different experiences, personalities, backgrounds and ways in which they learn, so we have a range of professional experts available to advise, guide and support you in all your academic, welfare and recreational needs. We want to ensure that you gain the most from your experience with us.

Our teams can provide professional advice, information and guidance, counselling, referral, skills development, advocacy, liaison, training, assessment and support.

### Additional learning support

York St John is working hard to create an inclusive environment for all our students and has established a number of initiatives that will help you to gain the most from your time at university. We work with a wide range of students who may require some kind of additional learning support such as students with dyslexia, disabled students or students with medical conditions.

### The Disability Advice Team

The Disability Advice Team coordinates the University's support for disabled students and we offer a range of services such as note taking, mentoring and special arrangements for examinations.

We realise that each student's requirements are different. Therefore, we ask that if you do need our advice or support that you get in touch with the team as soon as possible so that we can discuss the types of arrangements that are in place at the University.

We would also advise you to visit us if you can, before accepting an offer, as there may be some very specific arrangements that we can put in place for you.

### Dyslexia and study development

The University provides a screening process for dyslexia and you can also apply for funding towards the cost of diagnostic testing. If you are diagnosed with dyslexia there is a wide range of support and guidance to help you. This includes individual and small group sessions with study development tutors and the use of specialist IT support including assistive software packages such as TextHelp Read and Write.

### Funding to pay for support

Most UK full-time and part-time students, who require the sorts of services mentioned above, are eligible to apply for Disabled Students' Allowances (DSA) from their funding provider such as Student Finance England. DSAs are non means-tested grants which can be used to pay for such things as technical equipment, support workers and specialist one-to-one study skills tuition. Further details on the funding available can be found on the government website [www.direct.gov.uk](http://www.direct.gov.uk)

### How can I find out more?

If you have any queries or would like to arrange a visit please do not hesitate to get in touch. You can contact us on: T: 01904 876540 or E: [disabilityadvice@yorks.ac.uk](mailto:disabilityadvice@yorks.ac.uk)



## Writing development

Writing development is available to all students and is delivered through workshops, short writing courses, individual and small group tutorials. It is available to help you to improve your overall abilities as a writer, whether you have identified a particular problem or if you just want to develop your writing. It provides support in many areas of academic writing such as structuring and planning your research, improving your academic writing style and expanding your critical vocabulary.

## Health and welfare

Your success at York St John University is dependent on your wellbeing, so your health and welfare are very important to us. We offer the following services:

### Counselling & Wellbeing

The Counselling & Wellbeing Team is committed to help promote and maintain mental wellbeing for all students. It offers free confidential support to discuss personal or academic concerns and develop the best way forward for you. Our professional counsellors can offer a range of counselling styles and are able to work on a one-to-one or group basis. They also facilitate a range of skills training workshops on personal development and emotional wellbeing issues. The team offers drop-in and appointment sessions and is here to give you the space to discuss any personal challenge no matter how small.

### Health Centre

We recognise the importance of appropriate health care for all students and therefore provide a confidential service under the direction of the Medical Officer.

Doctors' surgeries are held regularly and a practice nurse holds daily clinics on campus and provides a wide range of services for students. Health promotion activities/campaigns are held regularly, providing specialist advice and support on subjects relevant to student life and healthy living.

### Residential Support Assistants

The team consists of trained residential support assistants and a number of team members are on call every night during term-time. The team works closely with colleagues across the University in coordinating responses to wide ranging issues relating to the student experience. Together they work to ensure an environment where you will feel safe, supported and able to study.

### Chaplaincy & Spiritual Care

You will find a wide range of life experiences and beliefs within the Chaplaincy & Spiritual Care team. They offer spiritual care to students to help in providing a holistic framework of support.

A wide range of sacred, quiet and prayer spaces reflect the different beliefs of members. These include a prayer room for use by all faiths, the Peace Garden, the Quiet Place and the Chapel. Christian worship takes place on a daily basis.

The Chaplaincy offers a non-judgemental, confidential 'listening ear' service to all and Chaplaincy team members fully respect each person's identity and beliefs. Faith advisers from many of the world faiths also provide support and advice. We also have links with pagan and other religious groups.

The Chaplaincy is funded by York St John and the Diocese of York. It also has a role in helping to ensure that issues of faith are fully and appropriately attended to within the life of York St John.

This includes, for example, offering opportunities to engage with local faith communities and increasing religious literacy among all students and staff.

### Student Advice

The Student Advice team will provide you with advice and guidance concerning a wide range of student issues and matters relating to student life. If the team cannot deal with your enquiry directly they will either refer you on to an expert adviser in one of our specialist teams, another member of York St John staff or an external advisory body where appropriate.

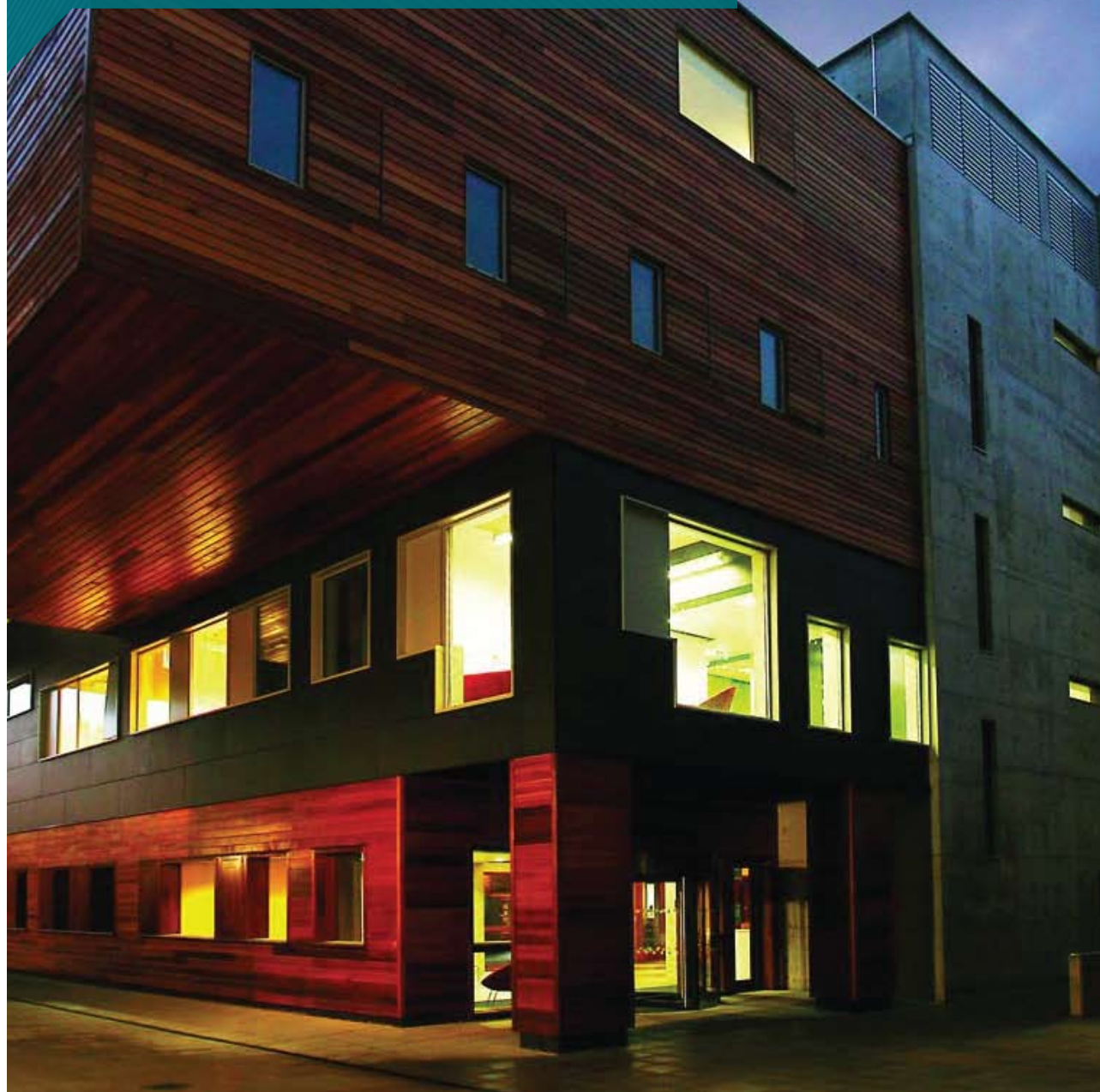
They can be contacted on  
T: 01904 876477  
or E: [studentadviceteam@yorks.ac.uk](mailto:studentadviceteam@yorks.ac.uk)

### Student Finance & Welfare

In addition to the advice offered by the Students' Union, we have a Student Finance & Welfare Team. The advisers are available to provide you with impartial advice on a wide range of issues including student funding, welfare benefits, debt, housing, employment, stress, insurance, health, consumer rights and legal advice. The team can also provide information on the different scholarships and bursaries that you may be eligible for.

T: 01904 876400  
E: [money@yorks.ac.uk](mailto:money@yorks.ac.uk)

# Learning & teaching resources



The facilities and resources at York St John have been carefully developed to support students as they learn: your needs are at the centre of our planning processes. Your learning will be organised into three categories:

- Face-to-face with a tutor in lectures, seminars and tutorials.
- Supported Open Learning (SOL) which recognises and builds upon the way in which people learn best.
- Independent learning and assessment where you will work individually or in groups.

## Fountains Learning Centre

A £1.1 million pound investment transformed the learning centre over the summer of 2011. The refurbished learning centre has a visible 'one-stop shop' for all Library and ICT enquiries. Previously closed-in spaces were opened up and books and other

resources more closely integrated into expanded study areas. New furniture and space dividers allow for lively group work or individual study. Lap top connection services have been installed and a new student portal and virtual desk top for remote users are being developed.

## Library

Our Library currently stocks around 175,000 books and we have access to over 3,000 periodicals most of which are available electronically. There are also collections of audio-visual material such as DVDs and videos and access to a wide range of electronic information sources, including electronic books. You can expect that all the listed learning requirements will be resourced, usually with multiple copies of books available.

Other services include an inter-library loan service for specialist items we don't hold, links to other local libraries and access to numerous bibliographical and reference databases. An enquiry service is available and library staff provide guidance and support on all matters relating to finding and using information including exploiting the Internet and citing resources. We are members of the reciprocal SCOUNL Access scheme which allows students access and, in some cases borrowing privileges, at other Higher Education libraries.

The British Library Document Supply with its vast collections is nearby at Boston Spa and can be accessed through its public reading room. We also have specialist collections and facilities in our RE Centre.





### IT Services

There are hundreds of PCs across the campus, including some 24-hour availability. You can use these to access your learning materials, our Virtual Learning Environment, e-mail and a variety of software, which includes the full Microsoft Office suite. Media editing suites, scanning and full printing facilities are also available.

Once enrolled, you will be given a University e-mail address and personal secure storage space on the network.

If you are off campus, any Internet-connected PC can access a range of University services including e-mail, library services and the Virtual Learning Environment amongst others. There are a number of 'hotspot' areas across the campus and in some of our student accommodation, where, if you have an appropriate laptop, you can connect to our WiFi service.

### De Grey Court

De Grey Court is a multi-award winning £15.5m development which opened in 2008. It houses:

- Facilities for the Faculty of Health & Life Sciences, including facilities for Occupational Therapy and Physiotherapy
- An additional state-of-the-art lecture theatre
- 20 seminar and breakout rooms
- Specialist and general teaching environments
- A Graduate Centre
- York St John Business School

### Foss Building

Another of our newer buildings is the Foss Building, which houses our sports hall, a physiology laboratory, a biomechanics lab, a psychology lab, physiotherapy labs, general teaching rooms and a newly expanded and refurbished fitness suite.

### Across campus

We have other facilities across our smoke-free campus to help you in your studies including a dance studio, drama studios, music rooms (both practical and technical), TV and film production facilities, editing suites and dedicated art and design studios.

A renovated Victorian chapel houses a showcase studio with state-of-the-art lighting and sound equipment.

We are constantly reviewing the needs of our students and staff and we know that by investing in our university, we are also investing in you and your future.

# Returning to learning?



Anyone with the ability and enthusiasm, regardless of their age or background, can enjoy the benefits of a university education. Here at York St John we warmly welcome applications from mature students and many of our staff, both academic and support, are experts in supporting adult learners through their years with us.

Perhaps you have reached a significant birthday, are looking to change jobs or start a new career, have experience relevant to a degree you'd like to study or now have the time to devote to learning more about a subject you have always been interested in? This is the year you can realise that ambition and continue with your lifelong learning in an academic environment.

## Becoming a mature student

For many people, the idea of entering or returning to education later in life may be daunting. But you need not worry that you will be in the minority. Here at York St John, nearly half of our students have not come to us straight from school – they are people who have decided the time is right for them to get back into learning.

If you come to study with us, you are almost certain to find other mature students on the course with you. At York St John we welcome mature students and value their experience and skills. Do not be put off because it is a long time since you have done any study as we will

provide support to help you brush up your study skills. More information is available about Student Services on pages 88-91.

We are proud of the reputation we have for supporting people through their degrees, whatever their age. Because we are relatively small you'll be more than just a number on a list to us; we get to know all our students by name. We'll help you feel at home from the moment you start your course here and will give you all the help and assistance you need to achieve what you want.

## Who to talk to

Undertaking a degree course can be a daunting prospect and many adult learners often feel that they just aren't 'clever enough' to go to university. By talking to one of our Admissions staff you will be able to find out whether or not you have the relevant qualifications or experience before you make a formal application.

We would also recommend that you come along to one of our open days where you can speak to academic staff and meet other mature students.

Before you make a final decision, you may also want to talk to a member of one of our specialist teams if you have specific questions about, for example, financial matters, disability issues, childcare queries or career planning. We also have a mature learner's contact who will be happy to talk to you about pre-entry courses and student life.

## Entry requirements for mature students

The main quality every student needs is enthusiasm for their subject and determination to succeed. As a mature student your 'life experience' is likely to play a large part in your success as a student. You may not be aware of it but you probably already have many of the skills necessary to be a successful student – time management, meeting deadlines, and social skills – all important facets for reaching your goal.

But to get to the starting point you may need some form of qualification, that might be:

- An approved Access Diploma
- A2 Level qualifications
- Vocational qualifications, such as BTEC National Diploma or Certificate or NVQs at Level 3
- Professional qualifications or Open University credits or we may be able to offer you an alternative route, please contact us for more information.

If you have these or similar qualifications please call our Information Hotline on 01904 876598 or E: [admissions@yorks.ac.uk](mailto:admissions@yorks.ac.uk) and one of our team will talk through with you whether or not your qualification meets the entry requirements for your chosen course.

For details on how to apply, see page 109.

## Access Diploma

Access diplomas help adult learners prepare and qualify for entry to Higher Education. The diplomas are aimed at students who do not have standard entry qualifications or who feel that their qualifications are a little rusty.

All such diplomas have a strong study skills/confidence building component. Access diplomas cover a range of subjects and are often discipline-related or related to progression to particular professions. Some examples that match our degree courses are:

- Art & Design
- Humanities
- Social Sciences
- Teaching

However, there are also programmes of a more general nature which are designed to prepare students for entry into Higher Education in a variety of ways. If you are unsure as to whether we would accept the diploma you are thinking of undertaking, please contact us.

Many colleges offer such courses. To find the one nearest to you that offers the most appropriate route look at the Access website at [www.ucas.ac.uk/access](http://www.ucas.ac.uk/access)

## Accreditation of Prior Experiential Learning (APEL)

An alternative route into your chosen course may be to have your work experience recognised through accreditation of your learning at your place of employment.

APEL recognises the value of learning which takes place outside formal education institutions. It helps adult learners to identify the skills and knowledge acquired informally and to reflect upon their learning processes, enabling them to make the transition from informal to formal learning.

It is also an important vehicle for enabling adults who possess few, if any, qualifications to return to learn in adult, further and higher education and subsequent re-entry into the labour market.

Again, our admissions staff will be able to give you more information on APEL. Contact them on 01904 876598 or E: [admissions@yorks.ac.uk](mailto:admissions@yorks.ac.uk)

## Supporting you

You will have access to all the student support services we offer. See pages 88-91 for details.

## Childcare provision

Childcare may be of particular importance to you. There is a private on-site nursery, Kaleidoscope. Please note that there is usually a waiting list and bookings should be made as early as possible. Kaleidoscope can be contacted on 01904 654792.

York St John University also offers means-tested bursaries for childcare that can be used to pay for your choice of local registered childcare. This can be for long or short-term cover if, for example, you need help over half-terms or if there is an illness in the family. Contact the Student Finance & Welfare team for further details on 01904 876939/6536.

*Anyone with the ability and enthusiasm, regardless of their age or background, can enjoy the benefits of a university education.*

# A diverse international community

York St John has a long tradition of welcoming international students, with increasing numbers coming from all over the world. This means that there is always a strong international presence in our student community.



There are many possibilities for you to study at York St John as an international student:

- Come and follow a three or four-year undergraduate degree programme.
- If you already have a suitable degree, take advantage of our postgraduate degree programmes.
- If you are not yet qualified to join a degree programme, apply to our International Foundation programme to give you the English Language and subject study preparation you need or join our four-year BA (Hons) degree programme. The first year is dedicated to developing your English language skills and giving you the subject study preparation you need, with progression on to your chosen degree programme.
- If you are already studying at a university overseas, join our Study Abroad programme for a year or a semester, which can gain credits towards your home degree.
- Join one of our many short courses in English Language or Teacher Development.

Details of all these possibilities are available from Admissions or YSJ International.

## Four-year BA (Hons) degree programme

One of the most exciting developments for international students is the four-year BA (Hons) degree programme, which allows you to spend the first year developing your English language skills, and acquiring the study skills you will need to succeed in British Higher Education. Success in the first year enables you to progress automatically on to the degree programme of your choice with us.

Most of the subjects in this prospectus are offered on the four-year programme. Those especially popular with international students include:

- Business Information Technology
- Business Management
- Dance
- Education Studies
- English Language & Linguistics
- English Literature
- Film & Television Production
- Film Studies
- History
- Human Resource Management
- Marketing Management
- Media
- Music
- Sport-related degrees
- Tourism Management

To be eligible for consideration for this programme, you will need:

- A high school leaving certificate with good grades
- IELTS 4.5 with no less than 4 in any individual skill.

To find out more about the four-year BA (Hons) degree programme or to request an information leaflet, please contact York St John International.

## Study Abroad programme

As a student from overseas, you can spend a semester or a year abroad at York St John. You can choose modules from any of our undergraduate degree programmes. Successful completion of these modules will give you credits towards your studies at home.

For full information about modules, credits and the practicalities of studying abroad, please contact York St John International.

T: +44 1904 624624  
E: [studyabroad@yorksja.ac.uk](mailto:studyabroad@yorksja.ac.uk)  
[www.yorksja.ac.uk/international](http://www.yorksja.ac.uk/international)

## Global Friends

Global Friends is run by students, with the support of YSJ International. Its aim is to make all international students feel at home at York St John. Membership is free to people of all nationalities and cultures. Global Friends puts on a number of events throughout the year, including welcome events, visits and trips in order to celebrate our many cultures and the diverse nature of our community.

Further information can be found at [www.yorksja.ac.uk](http://www.yorksja.ac.uk) or you can e-mail: [globalfriends@yorksja.ac.uk](mailto:globalfriends@yorksja.ac.uk)

We aim to make all international students feel at home at York St John.

Watch our international videos @ [www.yorksja.ac.uk/international](http://www.yorksja.ac.uk/international)

# Money talk

There have been a number of changes in fees and funding support recently and it can sometimes be confusing. We're here to help guide you through!

## Course costs

The most important thing to remember is that students from the UK and EU, studying full-time for their first degree will not have to pay any course fees while they are studying. Loans are available to cover these costs but you won't have to begin re-paying any loans until you graduate and are earning at least £21,000 per year. Depending on how much you earn, your repayments could be as little as £30 per month.

If you are disabled or have dyslexia you can also apply for an allowance (DSA) to help meet any extra study costs that you have including specialised equipment or services.

Details of our course fees can be found at [www.yorks.ac.uk/finance2013](http://www.yorks.ac.uk/finance2013)

## Living costs

Students starting university or college can also apply for loans to help with living costs such as food, accommodation and travel. How much money you get depends on your living circumstances.

Additional non-repayable grants are also available to full-time students from households with lower incomes in the form of a maintenance grant. Part-time students are not eligible for these maintenance loans or grants.

## Fee waivers and scholarships

York St John is committed to attracting and supporting students from a wide range of backgrounds as this enriches the learning opportunities for all our students. We have developed a range of fee waivers, scholarships and support programmes to ensure that students continue to succeed at York St John regardless of their financial circumstances. We currently offer:

- University Scholarships in the form of a fee reduction of £2,000 for one year of study based on residual family income.
- National Scholarships providing fee reduction worth £3,000 for one year of study based on residual family income.
- SPARK scholarships including including entry scholarships, exchange scholarships on a competitive basis, and scholarships for outstanding achievement at Level one.

The eligibility criteria and application procedures for all scholarships will be available via [www.yorks.ac.uk/finance2013](http://www.yorks.ac.uk/finance2013) as soon as the information becomes available.

## Further information

Information on government funding, repayments, loan terms and interest rates is available at [www.direct.gov.uk/studentfinance](http://www.direct.gov.uk/studentfinance)

Information about York St John fees, scholarships and other financial support is on our website at [www.yorks.ac.uk/finance2013](http://www.yorks.ac.uk/finance2013)

If you have any other queries, please contact our Student Funding Advice Team T: 01904 876939/6536 or e-mail [money@yorks.ac.uk](mailto:money@yorks.ac.uk)



What next?



## Open Days will take place on:

- Monday 2 July 2012
- Saturday 18 August 2012
- Saturday 8 September 2012
- Saturday 27 October 2012
- Wednesday 31 October 2012

Book online at [www.yorksj.ac.uk/opendays](http://www.yorksj.ac.uk/opendays)



# Visit us

The best way to find out about York St John University is to come and visit us. Our open days are the ideal opportunity to see if York St John is the right place for you. You can:

- meet our staff
- find out more about our degrees
- look around our facilities
- chat to our current students
- take a bus tour of York
- see our accommodation.

A team of current students is on hand at open days to answer questions about what student life is really like and to show you round the campus.

We recommend that you book a place if you would like to attend one of our open days. To reserve a place visit our website: [www.yorksj.ac.uk/opendays](http://www.yorksj.ac.uk/opendays)

### Can't make an open day?

If you are unable to attend an open day, you could come along to one of our campus tours, which normally run at 3.00pm on Wednesdays or 1.00pm on Thursdays. To book a tour please call 01904 876503. (Please note: tours only run if places have been booked.)

*'Everyone was really friendly and very helpful, and the whole atmosphere of the day was welcoming and relaxed.'*

*'Information given was clear and easy to understand. The University itself was very impressive.'*

*'I was given a tour around the campus by a current student doing a course I was interested in and it helped to find out from her what it was like.'*

*'Really enjoyed the day, clear where I needed to be for when, easy to find my way around, friendly students and staff!'*

Quotes from open day evaluations 2011

### See us on the road

Our Schools & Colleges Liaison team is out and about throughout the year at UCAS conventions and school events, so feel free to ask them any questions if you see them on the road!

# Entry requirements

We are very pleased to consider a range of qualifications for entry to our degree programmes. You can meet the minimum entry requirement of York St John in a number of ways:

## Flexible entry requirements

York St John welcomes students of all ages and has flexible entry requirements for mature students. Please see page 109 for information about how to become a student with us.

The following list shows the normal minimum entry requirements for our degree programmes. Please note that some of our degree programmes require higher entry qualifications.

### A2 Level

TWO passes at A2 Level or ONE Double Award or a combination of the two qualifications.

### BTEC QCF

Qualifications known as Nationals at Extended Diploma, Diploma or BTEC NQF Level 3 Certificate or Diploma.

### Mature entry

An Access Diploma (please see page 97). (Please check the course-specific requirements on the subject pages.)

### Scottish Highers and Advanced Highers

THREE Scottish Highers at grade C, plus three passes at grade 1-3 at Standard level to include English Language.

### Irish Leaving Certificate

FOUR Irish Higher Level passes at grade C, including English Language.

### International Baccalaureate

Full Diploma with a minimum of 24 points (check course for specific requirements. Certificate with a minimum 200 points to include two higher level subjects at grade 4 or above.

### International qualification

An equivalent international qualification, ie a full European Baccalaureate Diploma. Applicants from overseas can e-mail: [admissions@yorks.ac.uk](mailto:admissions@yorks.ac.uk) with any specific queries.

### Vocational qualifications

NVQ Level 3 qualification - other professional qualifications may also be considered.

### Welsh Baccalaureate Advanced Diploma

The Advanced Diploma comprising Core Certificate at Level 3, plus at least two options at Level 3, ie GCE Advanced or NVQ Level 3 or BTEC National Certificate at Pass may be considered.

### 14-19 Diploma

Advanced Diploma, please check individual programmes for specific ASL requirements.

## General information

- All candidates must have a minimum of grade C in GCSE English Language or an approved equivalent qualification plus two further GCSEs at grade C or above.
- All standard offers made by York St John will, where possible, be framed in terms of a tariff score. (For teacher training and sport programmes, equivalences to GCSE may not be applicable).
- We will take account of AS Levels wherever possible, although the minimum qualification for entry must be two A2 Levels or equivalent. AS Levels converted to an A2 Level cannot be counted twice.
- Offers may also require you to meet non-academic conditions such as CRB, Medical, GTCE etc
- We welcome A2 Level General Studies as a qualification and will accept a grade at General Studies as meeting part of the entrance requirement, EXCEPT for Physiotherapy.
- You will need to meet any particular subject academic requirements by the achievement of appropriate grades in Level 3 qualifications and GCSE Level examinations.

This information is for guidance only at the time of going to print and offers may vary depending on individual circumstances at the time the offer is made.

If you need advice on any qualifications you might have, please do not hesitate to contact Admissions on 01904 876598.

## Can I get credit for previous study in Higher Education?

If you have already completed or partially completed a course in Higher Education, it may be possible to enter some of York St John's programmes with credit. We can assess how much credit is appropriate for the study you have done and you could enter the second or exceptionally the final year of a relevant programme.

Examples of qualifications we can give credit for include BTEC Higher National Diplomas and Certificates and Diplomas of Higher Education. Successful completion of part of a degree programme elsewhere in the country may also lead to entry with credit.

You will still need to apply for entry with credit through UCAS. However, it is useful to contact Admissions at York St John first to assess whether entry with credit is possible. We will normally require a full academic transcript and module breakdown to assess whether you have sufficient credits and whether there is a reasonable match between what you have studied and what you now intend to study.

Please note that only credit obtained through study at York St John will count towards your degree classification.



If you need advice on any qualifications you might have, please do not hesitate to contact Admissions on 01904 876598.

# UCAS tariff

We welcome students with a range of qualifications from a variety of backgrounds. The UCAS tariff system gives numerical values to qualifications (see the grids below), so you can work out how many points your qualifications are worth. Please note that the tables below only show some of the qualifications we can accept – a full list is given on the UCAS website at [www.ucas.com](http://www.ucas.com) or you can call us for help in working out your points.

GCE qualifications			BTEC Nationals (NQF)			Points	OCR Nationals		14-19 Diploma			BTEC Nationals (QCF)			
A2 Double Award	A2 Level	AS Level	Award	Certificate	Diploma		Certificate	Diploma	Extended Diploma	Progression Diploma	ASL 2	Extended Diploma	Diploma	Subsidiary Diploma	Certificate
						420						D* D* D*			
						400						D* D* D			
						380						D* DD			
					DDD	360			D1			DDD			
					DDM	320			D2/M1			DDM			
						300				A					
A* A*					DMM	280			M2			DMM	D* D*		
						260							D* D		
A* A						250			B						
AA				DD	MMM	240		D	M3			MMM	DD		
AB						220									
BB				DM	MMP	200		M1	P1	C		MMP	DM		
BC						180									
CC				MM	MPP	160		M2/P1	P2			MPP	MM		
						150				D					
CD	A*					140								D*	
DD	A		D	MP	PPP	120	D	P2	P3	Max	PPP	MP	D		
DE	B					100				E					
EE	C		M	PP		80	M	P3					PP	M	
						70									D*
	D	A				60									D
		B				50									
	E	C	P			40	P							P	M
		D				30									
		E				20									P

# How do I apply?

## All full-time degree programmes

For autumn 2013 entry, you must apply through the Universities and Colleges Admissions Service (UCAS) for entry to full-time degree schemes. Programmes in the UCAS scheme are listed on the UCAS website at [www.ucas.com](http://www.ucas.com)

The UCAS Institution Code for York St John is Y75 YSJ.

## What do I need in order to apply?

For all our full-time courses, you can apply by using the UCAS online service *Apply* via the UCAS website ([www.ucas.com](http://www.ucas.com)). You must register with UCAS in order to log on to *Apply* and this process will generate a username and enable you to choose a password.

The on-screen guides will help you through the application process and you can save and amend your application as often as necessary before submitting it. Please check your application carefully before sending it to UCAS, making sure you have entered the correct course and institution codes.

If you are unable to apply online, application materials can be requested by phone via the UCAS Customer Service Unit on 0871 468 0468.

## Foundation degrees

The Foundation degrees in Supporting Learning, Theology & Ministry, Working with Children & Young People only accept applications direct to York St John. To obtain a direct application form: T: 01904 876505 E: [appforms@yorks.ac.uk](mailto:appforms@yorks.ac.uk)

## Part-time study

All part-time applicants should apply directly to York St John. For an application form T: 01904 876505 or E: [appforms@yorks.ac.uk](mailto:appforms@yorks.ac.uk) or you can apply online for some part-time programmes.

## When should I apply?

Whichever course you are interested in, it's good to apply as early as possible, once you're sure that you've picked the right degree and the right place. There are some programmes at York St John that always fill up extremely quickly for example Primary Education, History, Physiotherapy and Psychology. UCAS can start receiving applications for entry in autumn 2013 from 1 September 2012. The normal closing date for the receipt of applications is 15 January 2013. If you can manage it, hitting this application date is a good idea. However UCAS accepts that this isn't always possible and late applications are accepted by UCAS throughout the remainder of the applications' year, with a deadline of 30 June 2013.

Applications received by UCAS after 15 January are considered by institutions only at their discretion, and no guarantee can be made that they will be considered.

## Applications for programmes involving Art & Design

If you are applying for a degree involving Art & Design for 2013 entry, the deadline for receiving applications is 24 March 2013. We may however, consider late applications until 30 June 2013.

Please check with the University before you submit an application form if it is after this date.

## UCAS Extra

UCAS Extra, operates from mid-February to June. If you find yourself without an offer, for whatever reason, and you have used all five choices already or if you wish to change your subject choice and decline your previous offers, UCAS Extra enables you to have an additional choice through UCAS. This will mean that if you do not have an offer at an early stage in the cycle, you do not have to wait until Clearing to continue to find a place.

Universities and colleges with vacancies in Extra will list them on the UCAS website. Applicants who are eligible will be able to refer themselves electronically via the Applicant Enquiries Service for courses with vacancies.

## How is my application considered?

Most applications that are made to York St John are sent to us by UCAS. We will carefully read all applications and check to see that all general and specific entry requirements are met.



This may result in an invitation to interview (if this is a requirement of your course), after which we will decide whether to offer you a place. For certain courses, such as Primary Education, Occupational Therapy, Physiotherapy, Product Design, Fine Art and Dance we always interview candidates. Check out our website to see whether a particular subject requires an interview.

If we do decide to make you an offer without interview, you will receive an offer through UCAS and an invitation to a Visit Day at York St John, to meet staff and students and view our facilities or alternatively a campus tour.

If we offer you a place, the offer may be either Conditional or Unconditional. A Conditional offer depends on you obtaining certain qualifications or grades in your examinations and may also include other non-academic conditions such as Enhanced Criminal Records Bureau (CRB) disclosure, or medical reports. An Unconditional offer means that you have already met the academic entry requirements for the programme and have been accepted, though there may also be other conditions you need to meet eg CRB, medical.

The offer you receive through UCAS, will include information on any conditions that have to be met and guidance on how and when you have to make a decision on any offers you receive. If we are unable to make you an offer of a place, you will be advised by UCAS that unfortunately your application has been unsuccessful, along with a reason as to why.

### What happens if you accept a place at York St John?

If you accept a place at York St John (UCAS will ask you to make a decision when you have had responses from all of your choices and give you a date by which you need to make a decision), you will receive further information on the degree programme and details about accommodation, reading lists etc in May/June of the year you start.

Conditional offers made by York St John are made in terms of a tariff score or the achievement of a particular level of qualification. In the summer, as results are received, we make a decision on whether to accept a candidate or not, as quickly as we can. For some students it may be necessary to delay a decision until the results of all students are known after the publication of the A2 Level results, or GCSEs.

Students who have not met the terms of their offer will be ranked according to their tariff score/qualifications and we will decide how many of these students we are able to accept onto a particular programme.

As soon as we are able to confirm your place, you will receive confirmation from UCAS (AS12) and be able to see this on UCAS Track. At the end of August/early September you will also receive final joining instructions from us if your place has been confirmed. Please e-mail [admissions@yorks.ac.uk](mailto:admissions@yorks.ac.uk) as soon as possible if you no longer wish to take up your place.

### Will you accept an application for deferred entry?

York St John values the experience students can gain through taking a 'year out' or 'gap year' and we are very pleased to consider applications for deferred entry.

Deferral is, however, conditional on the availability of the programme for the following year and on your meeting all entry requirements before your 'year out' ie by 27 August 2013.

If you decide to change your year of entry after you have submitted your application, please e-mail or write a letter to Admissions as soon as you can for further advice.

### Students with special requirements

We are very pleased to consider applications from students with a range of disabilities. If you are interested in applying to York St John and have special requirements please contact one of our advisers first. For further details contact the Disability Advice team on T: 01904 876540, Minicom T: 01904 876540 or E: [disabilityadvice@yorks.ac.uk](mailto:disabilityadvice@yorks.ac.uk)

You should indicate the programme(s) in which you may be interested and the nature of your special requirement or disability. We will then be able to give you advice on the suitability of accommodation and other York St John facilities, and the availability of special learning resources.

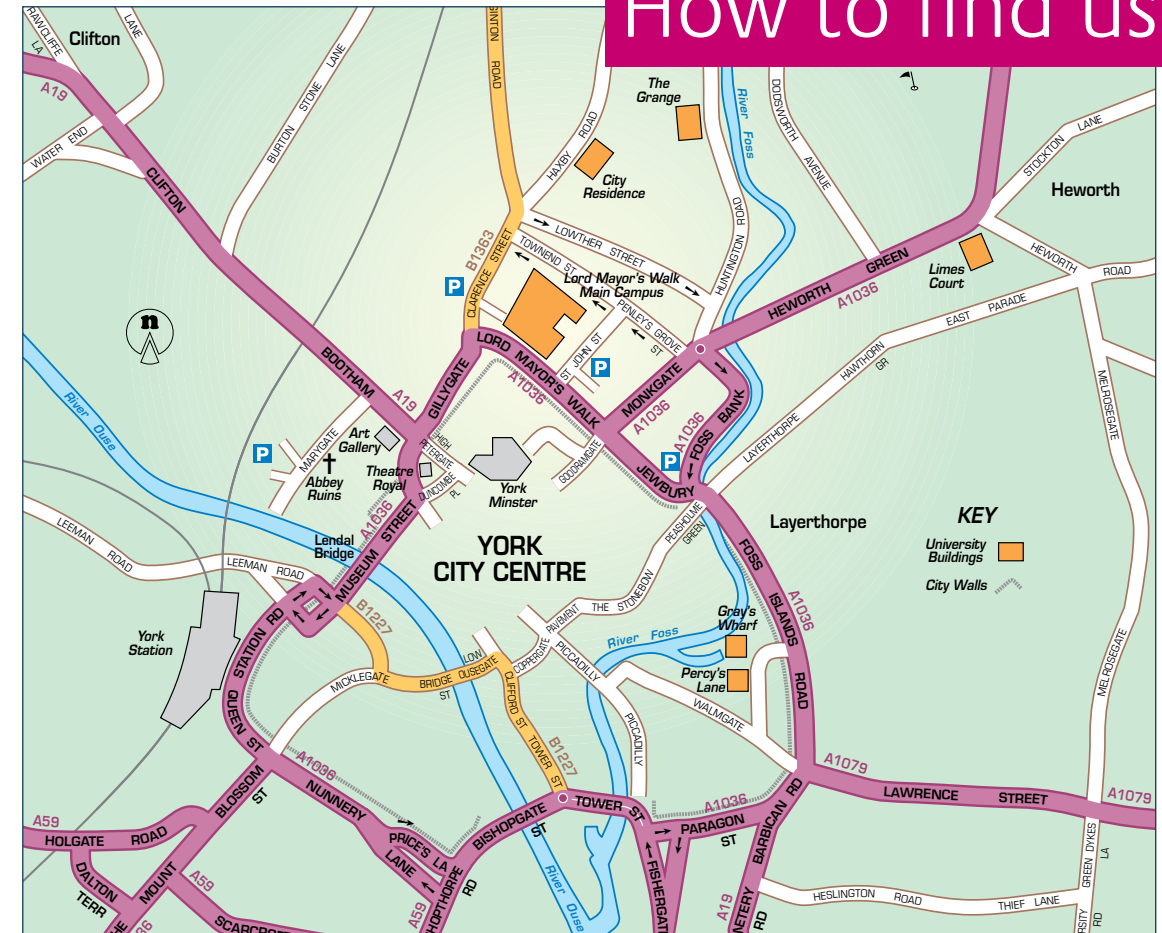
If you are planning to attend an Open Day or are invited to a Visit Day or an interview, please contact us prior to the event, so that we are aware of any special requirements you may have. Wherever possible, arrangements will be made to meet your specific requirements.

If you require further information on any of our programmes or guidance on entry requirements, please contact:

### Admissions

T: 01904 876598  
or E: [admissions@yorks.ac.uk](mailto:admissions@yorks.ac.uk)

# How to find us



### By Road

York St John is located just off York's inner ring road. If you would like more information on how to find us, you can visit our website at [www.yorks.ac.uk/directions](http://www.yorks.ac.uk/directions) or call the Marketing Office on 01904 876960 to request a more detailed leaflet.

### By Rail

London is just under two hours away by train with Edinburgh only two and a half hours away. York railway station is approximately 10 minutes by car or taxi, 15 - 20 minutes on foot.

### By Air

Manchester International Airport is approximately one and a half hours by road and Leeds-Bradford Airport and Robin Hood Airport, Doncaster are approximately one hour away.

### Car Parking

As we are a city centre campus, visitor car parking is very limited and is usually for disabled badge holders only. There are two long-stay car parks a few minutes walk from the campus - Monk Bar car park on St John's Street and Union Terrace car park on Clarence Street.

### Park & Ride

An excellent park and ride scheme operates in York. Full details can be found on the City of York Council website at [www.york.gov.uk](http://www.york.gov.uk)



Download from the App store to get directions to York St John.

# Terms and conditions

You will enter into a contract with York St John University (YSJ) at the point at which you accept an offer of a place. Your acceptance of the offer of a place is subject to your acceptance of the terms and conditions set out below.

The terms and conditions apply to all YSJ's students irrespective of the mode and place of their study. In the event of any inconsistency, the terms and conditions take precedence over any other advice or information offered by a member of YSJ's staff or its publications. The terms and conditions may be varied by YSJ from time to time both before and after enrolment at YSJ. Such changes will normally be made in response to legal requirements, national guidance or policy, the reflection of market conditions in respect of programmes, the ongoing development of programmes and the improvement of YSJ services.

Enquiries about these terms and conditions should be addressed to the Registrar, York St John University, Lord Mayor's Walk, York YO3 1 7EX.

1. As a condition of enrolment, you will be expected to comply with YSJ's regulations and disciplinary procedures and the regulations of YSJ's validating bodies as they apply to you as a student of YSJ and to your particular programme of study. Significant areas of regulation and disciplinary procedures apply to the following areas:

- Programme of study
- Assessment and progression
- Academic conduct
- Student discipline

- Financial commitments to YSJ
- Data protection
- The use of library and IT facilities
- Health and safety
- Accommodation.

Information on these issues as they relate to incoming students will be provided in preparation for enrolment.

2. YSJ will do its best to deliver programmes of study as set out in the relevant prospectus. Prospectuses are produced at least 18 months in advance of the start of the year of entry to which they refer. YSJ's programme offerings are kept continually under review. It is inevitable, therefore, that changes may occur. These may arise from academic review, staff changes, external requirements or resource constraints. YSJ reserves the right:

- To vary the content, methods and timing of delivery, assessment or location/campus of programmes as considered necessary by YSJ. Such changes may occur either before or after admission to the programme of study.
- To withdraw or discontinue a programme. A programme will not normally be withdrawn after entry to YSJ.

If a programme must be withdrawn after an offer has been accepted but before entry to YSJ, YSJ will make reasonable effort to provide a suitable alternative programme at YSJ or to assist application to an alternative programme at another institution. This will be the extent of its liability.

3. YSJ considers all applications for entry to its programmes according to the guidance provided in the prospectus and on the merits of the applicant. The criteria for selection may vary from time to time. Transfer between programmes will be subject to academic suitability and the availability of places.

4. YSJ reserves the right to refuse admission to a programme of study if false, incomplete or misleading information is provided as part of the admissions process or if your circumstances change in such a manner prior to your enrolment that, in the Vice Chancellor's view, it is inappropriate to admit you to your programme of study.

In the case of such programmes of study which have special entry requirements relating to health or criminal conviction, failure to comply with requests for information or to meet with specifications may lead to the termination of your programme of study at YSJ.

5. An offer for deferred entry to YSJ will be subject to the terms and conditions in force at the time of the deferred entry. An offer for deferred entry will not guarantee that the programme will run in the academic year requested. An offer of admission to a specific programme of study at YSJ does not imply any right to transfer to another programme of study within the institution.

6. YSJ provides access to some residential accommodation owned and/or managed by YSJ. Allocation of YSJ residential accommodation is according to agreed criteria with priority normally being given to students with disabilities, first-year students and international students. The offer and acceptance of a place at YSJ does not, however, imply a guarantee of YSJ residential accommodation.

7. YSJ reserves the right to make variation to or to withdraw facilities and services as considered necessary to YSJ. YSJ reserves the right to amend charges for its facilities and services from time to time.

8. You will incur a contractual obligation to pay the fees charged by YSJ for the delivery of its programme when you accept the offer of a place. The fees charged by YSJ will include tuition fees and may, in addition and as appropriate, include residential fees and examination fees. You may, in addition be charged additional costs specified for your programme of study. You will be personally responsible for the payment of fees, even where payment will be undertaken by a third party such as a Local Authority (LA), Student Loans Company or a sponsor.

9. You will be required to comply with YSJ's Financial Regulations as specified in the Student Finance Guide. In particular you should note that:

- If you do not pay tuition fees by the date specified by YSJ, YSJ reserves the right to discontinue your programme of study.
- If you leave your programme of study in the course of the academic year, you will be required to pay the proportion of the tuition fees specified for the weeks studied. This may be without the support of the LA for withdrawals prior to 1 December.

- If you withdraw from YSJ accommodation but do not withdraw from your programme of study, you will be liable for the rent for the full contract for the year.
- If you are in debt to YSJ at the end of the academic year, YSJ reserves the right to decline to permit you to re-enrol for the following year of study until the debt is paid. This will include (but is not limited to) unpaid tuition fees, accommodation or library fees.
- If you are in debt to YSJ at graduation, YSJ will not permit you to attend a degree ceremony, release a degree certificate or provide any letter of confirmation of award until the debt is paid. This will include (but is not limited to) unpaid tuition fees, accommodation or library fees.

10. YSJ is registered under the Data Protection Act to hold personal information about its students, applicants for its programmes or persons enquiring about its programmes and services.

Such data will be held and processed strictly for the purposes stated in line with the requirements of the Act. As a condition of enrolment, you will be required to provide such data as are required for course administration and for the purposes of statutory returns to funding bodies or equivalent organisations. You will also be required to contribute to the maintenance of the accuracy of data held about you.

11. YSJ cannot accept responsibility and expressly excludes liability to the full extent permissible by law, for:

- Damage to or theft of personal property on YSJ premises;
- Damage to or theft of vehicles and bicycles parked on YSJ property;

- Damage to or theft of computer equipment (including infection with a computer virus);
- The loss or non-return of work submitted for assessment;
- Injury arising from voluntary sporting activity;
- Personal injury or death except in so far as caused by the negligence of YSJ staff.

12. Neither party shall be liable to each other for any failure or delay in performing its obligations under this contract if such failure or delay is due to any cause beyond that party's reasonable control. For the purposes of this contract, causes beyond reasonable control will include (but will not be limited to) governmental actions, war, riots, civil commotion, fire, flood, epidemic, labour disputes (including the labour disputes of a third party) and act of God.

13. Where YSJ delivers a programme of study in conjunction with a partner organisation, information on the delivery of admissions, learning and teaching, learning resources, student support and disciplinary procedures will be as specified in the partnership agreement between YSJ and its partners. Where responsibility rests with the partner organisation, YSJ excludes liability to the full extent permissible under the law for failure by the partner organisation to carry out such responsibilities, for the negligent acts or omissions of its staff or for circumstances beyond the partner organisation's control which prevent or limit the performance of its obligations.

March 2012

# Message from the Vice Chancellor



I would like to extend a warm welcome to you if you are considering York St John University for your undergraduate studies.

I hope our prospectus has given you a small taste of our University and all it has to offer. I encourage you to discover York St John for yourself – come along to one of our open days or browse through our website and discover what an exceptionally friendly and lively university this is.

I am incredibly proud of our community ethos and strong reputation for supporting our students, personally and academically. We prepare our students for the future, not only equipping them with the subject-specific skills and knowledge to go on to their chosen career, but also the transferable life and work skills that we know employers are looking for.

I am delighted on a daily basis by our stunning campus which we have invested in to the tune of £75million and our location at the heart of the exciting and vibrant city of York –

perfect for a fantastic student experience. Generations of students have studied with us and graduated with excellent qualifications, but it is the experience, life-skills and extra-curricular achievements they take with them, that makes our graduates truly appreciate their time at York St John.

I look forward to welcoming you to our University – do come and join us.

Professor David Fleming

## Index

### A

Access diplomas	97
Accommodation	72
Accounting & Business Management	18
Admissions	109
American Studies	19
APEL	97
Applications	109

### B

British Sign Language	24, 40
Business incubation	86
Business Information Technology	20
Business Management	21
Business Management & Finance	22
Business Management & Human Resource Management	23
Business Management, International	38
Business Management & Language	24

### C

Campus tours	105
Careers & Employability	84
Chaplaincy & spiritual care	91
Childcare	97
Children, Young People & Families	25
Christian Theology	26
Clubs and societies	78
Counselling & Wellbeing	91
Counselling, Coaching & Mentoring	27
Creative Writing	28, 33

### D

Dance	29
Deferred entry	110
Design, Product	50
DesignWorks	86
Disability advice	89

### E

Education	30, 49
Education Studies	30
English Language & Linguistics	31
English Literature	32, 33
English Literature with Creative Writing	33
Entry requirements	106
Exchange schemes	83

### F

Fees	100
Film & Television Production	34
Film Studies	35
Finance, Business Management	22
Fine Arts	36

### G

Global Friends	99
Graduate internships	84
Grants	100

### H

Halls of residence	73
Health and fitness	80
Health Centre	91
History	37
How do I apply	109
How to find us	111
Human Resource Management	23

### I

Information Technology, Business	20
International Business Management	38
International students	98
International Tourism Management	39

### L

Languages	40
Learning & teaching resources	92
Library	93
Literature, English	32, 33

## M

Marketing Management	41
Marketing Management & Web Technologies	42
Mature students	96
Media	43
Modern European Languages	40
Money talk	100
Music	44
Music Production	45

## N

Nursery	97
---------	----

## O

Occupational Therapy	46
Open days	104

## P

Part-time jobs	84
Phoenix Centre	87
Physical Education & Sports Coaching	47
Physiotherapy	48
Primary Education	49
Product Design	50
Psychology	51

## Q

Qualified Teacher Status (QTS)	49
--------------------------------	----

## R

Religion & Education	52
Religion, Philosophy & Ethics	53
Religious Studies	54
Religious Studies, Theology & Residence fees	62
Residence, halls of	72
Residential Support Assistants	75, 85
Returning to learning	96

## S

Scholarships	100
Schools & Colleges Liaison	105
Self-catering accommodation	73
Sport & recreation	80
Sport, Society & Development	56
Sports Science: Exercise Practice	58
Sports Science & Injury Management	57
Sports Science for Performance Conditioning	55
Student loans	100
Student advice	91
Student finance & welfare	91
Students' Union	77
Study abroad	83
Supporting Learning	59

## T

Teacher Training	49
Television: Film & Television Production	34
Terms & conditions	112
Theatre	60
Theology & Ministry	61
Theology & Religious Studies	62
Tourism Management	63
Tourism Management & Marketing	64
Tourism Management, International	39
Tuition fees	100

## U

UCAS tariff	108
-------------	-----

## V

Visiting us	105
-------------	-----

## W

Web Technologies, Marketing Management	42
Welfare	91
Working with Children & Young People	65
Writing development	91

## Y

YSJActive	80
YSJ Connect	84
York	68

# Acknowledgements

Every effort is made to ensure that the information given about programmes is accurate and complete. However York St John reserves the right to make changes or cancellations to the programmes offered, without notice. York St John cannot accept liability for loss resulting from any such change.

This document has been produced using materials and processes that conform to FSC regulations. For more information please visit [www.fsc.org](http://www.fsc.org)

This prospectus is also available in other formats, for example large print and audio cassette. Please contact the Marketing office on 01904 876960 or E: [marketing@yorks.ac.uk](mailto:marketing@yorks.ac.uk)

Produced by the Marketing department, York St John University.

Design & artwork by OCM - [www.ocmdesign.co.uk](http://www.ocmdesign.co.uk)

Photographs courtesy of [www.visitryork.org](http://www.visitryork.org)

Photographs on pages 66 and 67 courtesy of Danel W. Bachman, Logan, Utah, USA.

Photograph on page 76 courtesy of Dan Roche.





York St John University  
Lord Mayor's Walk  
York  
YO3 1 7EX  
T: 01904 624624  
F: 01904 612512

Information Hotline: 01904 876598  
Minicom: 01904 876653  
E: [admissions@yorks.ac.uk](mailto:admissions@yorks.ac.uk)  
[www.yorks.ac.uk](http://www.yorks.ac.uk)

