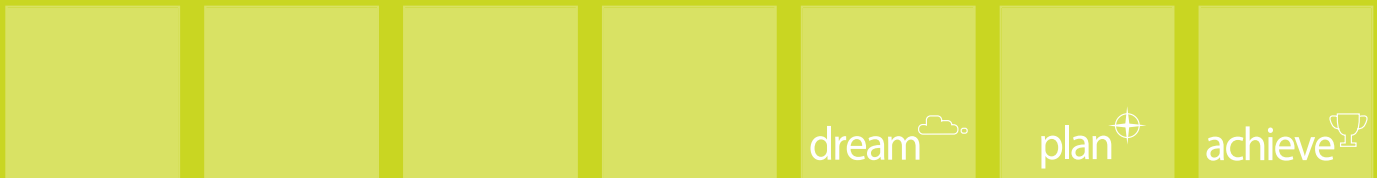




# 2013 prospectus



so much  
more than  
a degree

... if you want to  
enough you can  
achieve anything



Find out why LJMU could be exactly what you're looking for.  
[www.ljmu.ac.uk/whatimlookingfor](http://www.ljmu.ac.uk/whatimlookingfor)  
 Tell us what you think on Twitter [#whatimlookingfor](https://twitter.com/whatimlookingfor)

*Sir John Moores 1896 - 1993*

# contents

<b>Vice Chancellor introduction</b>	<b>4</b>
<b>15 facts about LJMU</b>	<b>14</b>
<b>World of Work Programme</b>	<b>18</b>
<b>Centre for Entrepreneurship</b>	<b>28</b>
<b>Campus developments</b>	<b>34</b>
<b>Accommodation</b>	<b>38</b>
<b>Students' Union</b>	<b>40</b>
<b>Sports facilities</b>	<b>42</b>
<b>Liverpool</b>	<b>48</b>
<b>Facilities</b>	<b>70</b>
<b>Work-related learning</b>	<b>74</b>
<b>Learning Resource Centres</b>	<b>78</b>
<b>Student support</b>	<b>82</b>
<b>Career matters</b>	<b>90</b>
<b>Fees and funding</b>	<b>98</b>
<b>Courses</b>	<b>114</b>
<b>How to apply</b>	<b>260</b>
<b>Location maps</b>	<b>270</b>

Shortlisted for  
the most  
improved  
student  
experience

(Times Higher Education  
Awards 2010)

Shortlisted for  
Outstanding  
Library Team

(Times Higher  
Leadership and  
Management  
Awards 2011)



**Queen's  
Anniversary  
Prize** for excellence  
in astronomy and  
public engagement  
in science



**2011**  
National Union of  
Students (NUS)  
Award winner

5 Higher Education  
Academy awards for  
outstanding teaching

**Department of Business,  
Innovation and Skills award  
for our careers guidance**

a welcome  
from the  
**Vice Chancellor**  
Professor Nigel  
Weatherill



Ranked in the top 400 universities world-wide, Liverpool John Moores University offers you an exceptional student experience, founded on high quality teaching, ground-breaking research and extensive links with employers, entrepreneurs and business leaders. That's why we are confident that our degrees are not only intellectually stimulating but will also equip you with the skills and experience required for professional success.

Studying at LJMU will unlock your full potential, fast-track your professional skills development and give you a CV to impress employers even before you graduate.

So whether you want to be a nurse, scientist, teacher, artist or your own boss, LJMU can help you achieve your ambitions for the future.

## Welcome to our undergraduate prospectus and thank you for considering studying at Liverpool John Moores University.

Scholarship, research and learning is at the very heart of everything we do. It drives our curriculum and is the foundation of our interaction with industry, business and the community.

LJMU is renowned for its open and happy academic community. Diversity is valued. Endeavour is supported. Achievement is celebrated and you will receive every encouragement to fulfil your potential. More importantly, you will receive every opportunity to ensure that, wherever possible, your learning will have a meaningful outcome – whether that be finding rewarding employment, embarking on further learning or starting your own enterprise.

But above all we want you to enjoy the journey. I can guarantee that at LJMU, you will be studying in world-class facilities alongside some of the best academics in their field; they enjoy what they do and they pursue their own research and learning with a passion and enthusiasm that permeates the whole University.

I do hope you choose to join our University community. If you have aspiration and ambition, I can guarantee you won't be disappointed.

## Come and see us

Even if you are from Liverpool we'd still recommend that you come along to one of our Open Days as they are a great opportunity for you to find out more about LJMU. You'll be able to chat to lecturers and also current students who will give you an honest account of what it's like to study here. We're confident that once you've seen us in action, you'll be keen to join our dynamic community of staff and students.

For details on applicant days, campus tours and online chat events go to:  
**[www.ljmu.ac.uk](http://www.ljmu.ac.uk)**



# dream

Coming to LJMU will open your eyes to new opportunities, to new experiences, broadening your horizons and making you realise that if you work hard enough anything is possible.

“ I am still pinching myself that I’ve got my dream job. I have always had a keen interest in politics and this job will open a lot of doors for me. ”

Journalism graduate **Helen Dodd** is currently working as Constituency Assistant to Alison McGovern MP. During her studies, Helen made sure she got as much relevant work experience as possible and also completed LJMU’s World of Work Skills Certificate. She believes this was vital in helping her stand out from other graduates to secure a very good job with great career prospects.





EST  
1825

# helping students realise their dreams for nearly 200 years

You might be surprised to learn that LJMU can trace its roots back nearly 200 years to 1825 and the opening of the Liverpool Mechanic's Institute. Back then our students had a rallying cry of 'knowledge is power' and this revolutionary zeal has enabled us to grow and evolve over the years and today we are now one of the UK's largest universities,

We take our name from business mogul and philanthropist John Moores, who epitomises the LJMU ethos of '**Dream, Plan, Achieve**'.

Born into a working class family in Salford, John Moores turned his love of football into a business empire based in Liverpool that was worth millions.

We are a university with big ambitions and we encourage all of our students to aim high, to believe that, just like John Moores, they too can achieve their ambitions. So if you have talent and are willing to work hard and grasp every opportunity that comes your way, you will love LJMU.

pictured right: Formerly known as Liverpool Polytechnic, we became one of the UK's new generation universities in 1992, adopting the name Liverpool John Moores University.





# we will rock you

Our ethos is summed up in three words, Dream, Plan, Achieve. No one embodies this more perfectly than our Chancellor and rock legend, Dr Brian May.

While gaining global recognition as a musician, entrepreneur and supporter of the performing arts, Brian May never lost sight of his dream, his passion for astronomy and science. Thirty years after starting his PhD, he achieved his doctorate, personifying the power of lifelong learning.





# 15

things you should  
know about **LJMU**

**1.** LJMU offers you a globally unique model of higher education – the World of Work<sup>®</sup> Programme - developed in partnership with employers like the NHS, Marks and Spencer and Sony **2.** UK leader in entrepreneurship training and support **3.** £160 million invested in award-winning new buildings and improving student facilities in the last 10 years **4.** Awarded our 5th university Oscar (National Teaching Fellowship) for innovative teaching in 2011 **5.** Engineering students in our Formula Student team test drive their racing car designs on the Silverstone Circuit **6.** Over 75% of all LJMU research is classed as internationally important and this informs all areas of the curriculum **7.** We launched the UK's first sports science degree and our School of Sport and Exercise Sciences is now ranked as 'amongst the very best' in the world **8.** Our Pharmacy School is one of the oldest in the UK and renowned for producing 'industry ready' graduates **9.** Our Centre for Public Health has World Health Organisation (WHO) status **10.** We pioneered computer games degrees and have outstanding links with games developers, academics and industry professionals around the world **11.** We have over 100 years' expertise in delivering professional courses for the maritime industry **12.** Our General Engineering Research Institute carries out world-class research **13.** Our law students routinely make the finals – and win – national moot, negotiation and mediation competitions, beating university teams from across the UK **14.** Winners of the Business Leader of Tomorrow KTP award three times in a row **15.** Our fashion and textile students have been exhibiting their work on the catwalk since 1947

zoologist  
 barrister  
 paramedic  
 sports scientist  
 film maker  
 manager  
 civil engineer  
 teacher  
 coach  
 architect  
 engineer  
 accountant  
 designer  
 midwife  
 nurse  
 criminologist  
 lecturer

90% of our students are in work or further study six months after they graduate

Every university offers students careers advice. Only LJMU has integrated its expert careers and employability support into all of its undergraduate degrees. That's why our graduates are increasingly sought after by employers in all sectors of the economy.

Thanks to the growing success and recognition of our World of Work Programme, both in the UK and internationally, your prospects will be even better by the time you collect your LJMU degree.

# you're hired

Thanks to our World of Work Programme we can help you realise your ambitions, using all of the University's expertise and resources to help you achieve more than you ever thought possible.

LJMU offers you a university experience that will help you scale the professional career ladder. Thanks to our extensive links with managers, senior partners and executives in all business sectors and professions you can be confident that your degree will deliver the skills and professional development you need to impress any future boss.

Here are just some of the employers we work with:

A grid of logos for various employers including GKN Aerospace, Anderson Bick, Siemens, CBI, RICS, IOD, Airbus, NHS North West, Sony, Real Capital Analytics, Air France KLM, Oracle, Luxfer Group, United Utilities, British Chambers of Commerce, Ford, Shop Direct Group, and M&S.



**“The Work-Based Learning Unit was the key to everything – they helped me with my CV and application forms. Without my placement and the support from LJMU I don't think I would have secured the job at Bentley.”**

Andrew Prescott graduated with First Class Honours in his Business Management and Information degree plus the prestigious CMI Outstanding Placement Student award.

Andrew completed his year long placement at General Motors in Luton. LJMU's Work-Based Learning Unit helped him secure this outstanding work experience and his place on Bentley's graduate scheme.



“

My career prospects are great. I could work pretty much anywhere in the world. The course is brilliant. I'd definitely recommend it.

”

**Andrew Cheese,  
MPharm Pharmacy**

Originally from Somerset, Andrew completed LJMU's science foundation programme before starting his pharmacy degree.



our law students routinely win national mooting, negotiation and mediation competitions, beating university teams from across the UK and Europe

“ The World of Work Programme offers employers an important means of discriminating between an applicant with the Skills Certificate and one without. It shows you have made an effort to make yourself more employable.”

**John Williamson, United Utilities**

# The World of Work Programme

**Every university offers students careers advice. Only LJMU offers its students the chance to get an additional certificate proving to potential employers that you have the skills and experience they are looking for in their graduate recruits.**

Our World of Work Programme is backed by employers and the skills you'll develop have been identified by business and industry - not LJMU - as essential for graduates making the transition from university study onto the professional career ladder.

Completing our World of Work Skills Certificate will ensure that you can effectively demonstrate

and articulate all your skills and personal attributes on paper and during an interview. That's because it mirrors a conventional recruitment process, giving you a 'dry run' at applying for graduate jobs before you do it for real.

With competition for graduate jobs increasing, such experience will boost your future career success and earning potential.



**LJMU Fashion graduate**  
**Alena Kudera Johnson** was one of only ten graduates worldwide to be invited to show their collections at a prestigious fashion tradeshow in Paris in 2012. The event was organised by ARTS THREAD in partnership with leading fashion tradeshow "Who's Next/Prêt-à-Porter" to help launch the careers of the next big names in fashion.



**imagine yourself**  
 five, ten, 15 years from now...  
**what do you think you will be doing?**

Working for a Formula 1 racing team?  
 Running your own architectural practice?  
 Conducting scientific research? Managing a  
 children's ward in a hospital? Launching your  
 own fashion label? Our graduates have been  
 able to do all this and much more thanks to  
 the LJMU student experience.

LJMU believes that a university education should give you more than an academic qualification; it should give you the skills, experience and confidence to succeed in the career of your choice after you graduate. That's why all of our degrees come with graduate skills development and work-related learning built in, not as an optional extra. It's also why we work with FTSE 100 index companies and leading business organisations to ensure our World of Work Programme helps our graduates really shine and out-perform other candidates when applying for jobs.

So regardless of whether you are a budding entrepreneur or have ambitions to be a teacher, criminologist, lawyer or engineer, we are confident that we can help you achieve your dreams.



supporting  
graduate start-up  
companies

business advice as  
part of the curriculum

extensive  
network of  
entrepreneurs  
and business  
mentors

hotdesking at  
our dedicated  
Hatchery Space

young enterprise  
start-up  
programme

ranked in the top  
25 UK universities  
for graduate business  
start-ups

annual business  
idea competition



# The Centre for Entrepreneurship

Whether you want to develop a new business idea, work as a freelancer, launch a product or service or grow an existing business, LJMU's Centre for Entrepreneurship can help.

LJMU first launched its Student Enterprise programme in 2003 and it's been so successful that we've established a dedicated Centre for Entrepreneurship to support students and graduates who want to set up their own businesses.

Competition to win one of our Enterprise Fellowships is increasing year on year. That's not surprising because successful ventures receive an award of £1,500 and more importantly expert training and advice on how to write an effective business plan and much more.

**Follow the Student Enterprise Team on Twitter: @LJMU\_Enterprise**

**The Green Room offers students and graduates space to work on their business plans, network with other entrepreneurs and receive confidential and professional advice from University business experts.**



“  
**The LJMU Enterprise Fellowship meant everything to us. It not only provided us with the essential start-up grant but it also enabled us to develop much needed business skills.**  
 ”

Business graduates **Kayleigh Baccino** and **Talia Baccino** founded Trendy Vend Ltd in 2008. Since then they have secured £1million+ investment, enabling them to go nationwide with their unique vending machines dispensing cosmetics and beauty products for both men and women.



a university  
where you can...

...work, rest  
and play





building a **better** university for you



Over the last 10 years LJMU has invested close to £160 million across the University, developing award-winning new buildings and improving existing facilities for all our students. The £37 million Redmonds Building will be completed in 2012 and is named after LJMU Honorary Fellows Phil and Alexis Redmond. Founders of Mersey Television they produced programmes such as Brookside and Hollyoaks. Appropriately the building will provide industry-standard film and broadcasting studios as well as general teaching space and professional training facilities.



# the original Green Brick™ university

LJMU is committed to reducing its carbon footprint and is aiming to cut its CO<sub>2</sub> emissions by **25%** by 2015

- The greenest university in Liverpool (2011 Green University League Table)
- Ambitious recycling programme
- LJMU is a member of EcoCampus
- The first University in Merseyside to be awarded Fairtrade status
- Sustainability Award Winner 2011

We guarantee all new students a place in high quality student accommodation.

Living away from friends and family for the first time can be a daunting experience. That's why we guarantee all new students – including those who join LJMU via Clearing – a place in our accommodation.

The wide range of student housing in Liverpool means that we can offer you a choice of relatively low cost but high quality approved student accommodation right in the heart of Liverpool city centre.

Accommodation consists of individual study bedrooms within shared flats where you will live alongside other new LJMU students. Most bedrooms also have private en-suite bathrooms. The accommodation is all self catering, so you'll have to brush up on your cookery skills before you arrive.

The welfare of our students is paramount. You'll find on-site staff support in all accommodation in addition to LJMU's university-based student support services. You can also elect your own Hall Reps, a team of students whose role is to make other students feel welcome and supported as they move into their new home and settle into life at LJMU.

Provision for students with disabilities is constantly improving. We have accommodation that is wheelchair accessible and suitable for students with visual or hearing impairments. Whatever your requirements, LJMU will strive to provide you with suitable accommodation. Visits can be arranged to check that accommodation is suitable and to discuss your specific needs in greater detail.

**For the latest information, go to [www.ljmu.ac.uk/accommodation](http://www.ljmu.ac.uk/accommodation)**



a **place**  
of your  
own

Our modern student accommodation is within easy walking distance of most of our teaching buildings.

The typical cost of a single bedroom with a private bathroom within a shared flat is £98 per week.

Our accommodation is amongst the cheapest for any large city UK university.

All students from outside the UK are required to pay for their accommodation in full and in advance of their arrival in Liverpool. Please contact the LJMU accommodation Office before arriving in the UK.



**Fancy hitting the slopes with the LJMU snowriders, obsessing about anime with like-minded fans, having coffee and cake with other mature students or learning some new moves with our freestyle dancers? With over 80 different sports, clubs and societies on offer at Liverpool Students' Union, there are loads of opportunities to meet new people and try something different. For a full list of sports, clubs and societies go to: [www.liverpoolsu.com](http://www.liverpoolsu.com)**



**“Without the clubs and societies there would be fewer opportunities to try random things for the first time and meet like-minded outgoing students – all of which make the whole uni experience much more entertaining.”**

Ian Jones,  
Snowboarding Club,  
LiverpoolSU



# sport for all

As an LJMU student you'll be eligible for free off-peak membership to 12 Lifestyles Fitness Centres across Liverpool.

Your membership covers a host of activities and facilities: top-of-the-range gym equipment and fitness suites, tennis, squash and badminton courts, an Olympic-sized swimming pool, and two golf courses.

The Students' Union also runs a number of British University and College Sport (BUCS) teams in a variety of sports, such as badminton, boxing and cricket as well as football, hockey, netball and rugby union.

So whether you are an elite athlete competing at the highest level of competition, or if you just want to get fit and have fun, you should be able to find an activity or sport that suits you at LJMU.

**Lifestyles**  
Fitness Centres









### Support when you need it

LiverpoolSU supports you when you need it through their advice centre, course reps and hall reps. Every year the Union trains 200 course reps to give students a voice across the University. Thanks to this active network of course reps issues affecting your academic experience can be brought to the attention of the University. This means that students can, and do influence University policy.

### The Haigh

LiverpoolSU's Haigh Building has a student bar, café and shop as well as a range of other services for students. Whether you want to grab a bite to eat between lectures, have a quiet drink at the end of the day or get ready for a night out, Scholars bar is the place to go. Scholars also offer a wide range of pre-club warm up entertainment.



“ LiverpoolSU has had such a positive impact on my life. It gave me a great social, work and academic life.

Business Studies graduate **Jemma Dudley** first joined the Union's Hockey Club before becoming more actively involved as a course rep and then as Disability Rights Officer and Vice President of the LiverpoolSU. She has no doubt that her involvement with the Union was key in helping her win a place on the Co-operative Group's prestigious Leadership Programme.



# the world in one city...

Liverpool is a multi-racial and multi-cultural city supporting a diverse range of religions and communities. LJMU too is a melting pot of people, ideas, and cultures. Our staff and students come from over 100 countries around the world, each bringing their own little slice of home to Liverpool and creating a truly unique and supportive community.



Culture vulture, shopaholic, music lover or the ultimate sports fan – whatever you're into, Liverpool has it all...

... and when you want to escape the hustle and bustle, you'll be spoilt for choice with beautiful parks and gorgeous sandy beaches not to mention Snowdonia and the Lake District within easy reach.

# ...the world in one university



Liverpool may be the UK's fourth largest city but it is also compact and easy to get around. It offers you all the excitement of a major city but also the friendliness and sense of community of a much smaller town.

From its flair for fashion, art and culture, to its love of sport, music and comedy, Liverpool is a city unmatched by any other in the UK. With restaurants and cafes catering for every taste and budget, from traditional pubs to boutique hotels, award-winning theatres, art house cinemas and comedy clubs, Liverpool has everything you could possibly want in terms of entertainment and leisure services.

Liverpool loves football but the city also hosts world class rugby league, horse racing, tennis, sailing and golf competitions. Music too is part of the fabric of Merseyside but don't worry you don't have to be a fan of the Beatles as Liverpool's love of music embraces much more than just the Fab Four; through events such as Africa Oyé and the Mathew Street Festival.

Liverpool has loads of great bars and clubs. So whether you're looking for a loud and lively night out, want to watch the footie with your mates or even take your mum and dad out for a drink, with over 300 venues to choose from you'll be spoilt for choice.

**we think Liverpool is unlike any other city but don't just take our word for it... here are just some of the accolades Liverpool has collected over the years**

the city's retail district, **Liverpool ONE**, was named **UK Shopping Location of the Year in 2010**

(RETAIL WEEK)

the city was **European Capital of Culture in 2008**

**Liverpool is a UNESCO World Heritage Site,**

like the Great Wall of China and the Pyramids of Giza in Egypt

Liverpool Biennial is the **largest contemporary visual arts event** in the UK, and one of the world's best attended arts festivals

the **Guinness Book of Records** named Liverpool the

**World Capital of Pop**

Liverpool's Seel Street was nominated in the **'Hippest Street'** and Bold Street in **'Best Shopping Street'** categories in the 2011 Google Maps and Street View Awards

the city has more galleries and museums, including **Tate Liverpool** and the **new Museum of Liverpool Life**, than any other city outside London and boasts outstanding architecture around virtually every corner

Liverpool John Lennon Airport boasts excellent links with the rest of the UK and Europe and is one of the UK's top 10 busiest airports

Liverpool is famed for its music festivals - **Africa Oyé** is the largest free African music festival in the UK while **The Mathew Street Festival** is the largest annual free music festival in Europe

# a warm welcome awaits

Liverpool's claim to be 'the world in one city' is reflected in the diversity of its well established international communities. The city's Chinatown is the oldest in Europe. Pakistani, Indian, Bangladeshi, Somali and Nigerian communities are just a few of the other nationalities that are well established in the city. The places of religious worship across the city reflect this diversity, so whatever your faith there will be somewhere for you to worship in Liverpool.

LJMU works with the police, community groups and other agencies to promote equality of opportunity and eliminate discrimination both on campus and across the city.

For international students moving to the UK is a big step, but rest assured you will receive a warm welcome when you arrive in Liverpool plus plenty of support from LJMU to help you settle into your new home.

Liverpool is a safe, multi-cultural city, with low levels of violence and street crime. Our Student Advice Team can give you practical advice on personal safety and other aspects of living in the UK. To ensure the smoothest arrival at Liverpool for new international students LJMU runs a 'Meet and Greet' service from Liverpool John Lennon and Manchester airports. For details, please email: [international@ljmu.ac.uk](mailto:international@ljmu.ac.uk)



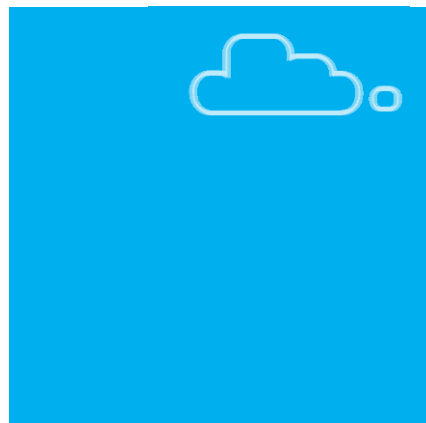
“

LJMU ticked all the boxes for me. I fell in love with Liverpool on my first visit, deciding instantly that it was the place for me.

**Jen Sutton, BSc (Hons) Geography**

”

“



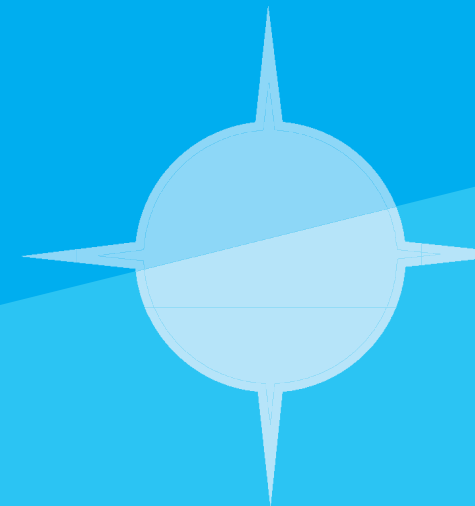
My college tutor advised me to come to LJMU and I'm really glad he did. I had the opportunity to complete lots of outside commissions while I was studying and this has given me the confidence to go freelance. I've worked hard to get the most out of every day at LJMU. It's been brilliant.

**Lucy Wilson, BA (Hons) Graphic Arts (Illustration)  
and founder of [www.elizabethsheart.com](http://www.elizabethsheart.com)**

has set up her own illustration and design business, [www.elizabethsheart.com](http://www.elizabethsheart.com)

”





# plan

University is your time to shine and LJMU will work with you to help you achieve your dreams for the future. We are a university rich in resources, facilities, expertise and support that you won't find anywhere else or at any other time of your life. So make sure you take advantage of every opportunity that comes your way.

# learn from the experts

All LJMU degrees are of the highest academic standard and are taught by academics actively involved in research or consultancy projects with business and industry. It's this combination of academic expertise and 'real world' experience that helps keep our degrees up-to-date and secure accreditation by key professional bodies.

- Our 24 credit, yearlong modules are helping students really engage with their subjects
- **Links with a wide range of industry partners ensure that our courses have real currency with your potential employers**
- Research and innovative practice is incorporated into the curriculum
- **We give you up-to-date insights into the latest thinking in your field**
- Our tutors have invaluable experience of their industry
- **Guest lectures from industry leaders**







# be inspired

Masterclasses and 'In Conversation' events bring the world of work right into the University, giving students unrivalled access to some of the biggest movers and shakers in business, industry and even entertainment.

## Gok Wan

Fashionista and TV presenter

## Heston Blumenthal

Michelin Star winning chef

## Brian May

Musician and LJMU Chancellor

## Kim Cattrall

Actress and LJMU Honorary Fellow

## Sir Terry Leahy

CEO of Tesco

## Sir Phillip Green

United Utilities CEO and  
WoW Advisory Board Member

## Nick Sharratt

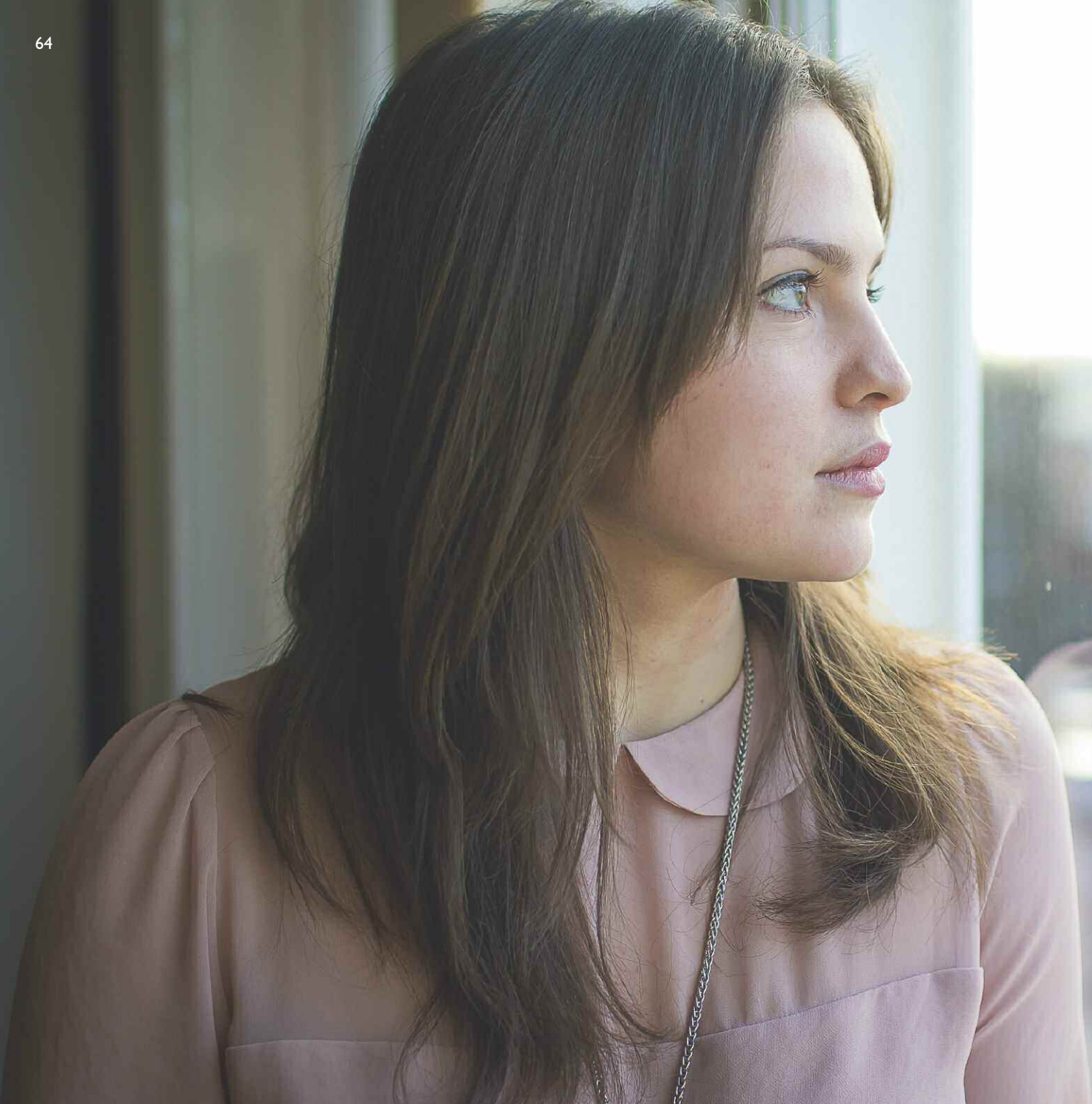
Award-winning illustrator  
and author

## Jo Pratt

LJMU graduate and acclaimed  
food stylist and author

## Gill Palmer

Oracle Vice-President and  
WoW Advisory Board Member



**I am proof that the World of Work Skills Certificate does work. The employer interview helped me the most. I was given excellent feedback and this helped me focus and back up my skills with real evidence during my successful interview with the Realbuzz Group.**

Media, Cultural Studies and Marketing graduate **Rachel Sanders** completed an internship at SK Events and worked in the editorial team of the University's World of Work Star Newspaper during her degree. This experience plus her Skills Certificate helped her secure an editorial assistant job working on [realbuzz.com](http://realbuzz.com) and [getwed.com](http://getwed.com)

**It's not who  
you know,  
but who  
you get to  
know that  
matters.**

**And thanks to LJMU's close  
links with employers, from  
all sectors and types of  
organisations from small  
companies to multi-national  
organisations, our students  
enjoy outstanding work  
placements, internships  
and other work-related  
learning opportunities.**

# those who can, do!

Work-related learning is included in every degree programme, so you will have the chance to engage in 'real world' projects or go on placements and apply your skills in professional settings.

- work placements
- **internships**
- projects with work-based contacts
- **simulations of workplace activity**
- employer-driven case studies
- **off-campus work-related learning**



a third of LJMU students are aged 21 or over





# hands-on experience

LJMU's facilities are designed to replicate 'world of work' environments so that you can gain the key skills and experience relevant to your chosen career. These include science, technology and engineering laboratories, broadcast quality TV and radio studios, a forensic scene-of-crime lab, a 360°

ship simulator, theatre and rehearsal facilities, a mock courtroom, clinical practice suites, art galleries and much more.

See LJMU facilities and more on LJMUTV on YouTube: [www.youtube.com/LJMUTV](http://www.youtube.com/LJMUTV)



buildings and facilities to inspire and motivate everyone who uses them



# more than just an academic qualification

Whether you are studying graphic design or pharmacy, criminology or business studies, you will have the opportunity to become expert in up to eight transferable graduate skills identified with employers as applicable to a wide variety of professions and careers.

your  
graduate  
skills 

analysing  
and solving  
problems

team working  
and interpersonal  
skills

verbal  
communication


written  
communication

personal  
planning and  
organising

initiative

numerical  
reasoning

information  
literacy and  
ICT skills

 To have the World of Work Skills Certificate shows that you've gone that step further as a student and found out what working life is all about. I'd advise all students to do it.

**Jane Woodhead, Paver Smith, PR Agency of the Year 2009**





“

My time at **Vogue** was really intense but absolutely brilliant at the same time. The hard work paid off when I was promoted from assistant to a fashion editor. I'm determined to get back to New York.

**Mark Burkey,**  
BA (Hons) English

”

Graduate Mark is planning to combine his love of the written word and his passion for fashion by following a career in publishing and has already completed a Pulitzer-prize winning internship for US Vogue, working for three months in New York.





## our Learning Resource Centres are open and ready when you are

From PCs to periodicals and coursework to coffee breaks, the University's Learning Resource Centres provide access to all the resources and student support services you'll need to succeed in your degree and have a great student experience.

LJMU has three Learning Resource Centres, with one based in each of the City, Mount Pleasant and IM Marsh campuses. This means that whatever and wherever you are studying at the University you are never far from one of these Centres and with 24/7 opening hours during semesters, you can pop in anytime, day or night, at a time that's most convenient for you.

our **extensive print collections, professional journals and electronic library** offer you all the resources you'll need to complete your degree and keep **up-to-date** with the latest **developments in your chosen field**

# get into the zone

Our Learning Resource Centres are zoned to give you different spaces and facilities where you can meet friends for a coffee, work in groups or study quietly on your own.

The Centres combine the best aspects of traditional libraries with everything you'd expect from a modern university: there's Wi-Fi access throughout, loads of computers, books, periodicals and journals

as well as online resources. Sofas, newspapers and on-screen information systems also help to create spaces where you can relax after lectures or studying.

All of the Centres are fully accessible to all users, offering wheelchair access, hearing loop facilities, height adjustable workstations, and specialised software to support visual or specific learning needs.



# more than just books

Every subject, every topic, every interest is covered in our libraries – in formats ranging from DVD and CD, to journals, satellite TV programmes, magazines, and of course books. Increasingly academic publishing and comment takes place online and LJMU's electronic library gives you access to 22,000 electronic journals, newspapers, conference proceedings, maps, legal documents and much more.

- over 820,000 items including 650,000 printed monographs, 120,000 e-books, 50,000+ periodicals
- **international, national and local newspapers**
- 2,000 study places
- **helpdesks on all sites**
- induction sessions for new students
- **e-books mean you have 24 hours off-campus access to many learning materials**
- 230 electronic databases
- **over 1,000 PCs and laptops**
- our high-spec PCs are upgraded regularly

**In the Student Zones you can get advice on everything from:**  
 teaching and exam timetables **networked PCs and applications** Blackboard, LJMU's virtual learning environment  
**submitting coursework and assignments**  
 paying fees and money matters **LJMU's employability initiatives** your health and wellbeing **library resources**

“ LJMU's supportive academic and technical staff are always available to help and my Learning Resource Centre is full of excellent academic resources.

**Melissa Teh, BSc (Hons) Human Psychology**

Originally from Malaysia, Melissa enjoyed studying at LJMU so much that she is now enrolled on our MSc in Occupational Psychology.





# supporting you, every step of the way

University is different to being at school or college and LJMU understands that making the jump up to degree-level study can be difficult for some students. That's why we offer a wide range of study skills courses as well as advice and guidance from a host of experienced staff.

- Our Spiritual Support team offers confidential pastoral care and support to students of all beliefs and backgrounds
- Multi-faith prayer rooms for personal prayer, reflection and contemplation
- Free study skills courses
- Counselling Service

To help non-native English-speaking students achieve their full academic potential LJMU offers free academic English courses during semesters. For further details go to: [www.ljmu.ac.uk/studysupport](http://www.ljmu.ac.uk/studysupport)

# the personal touch

The Student Advice and Wellbeing team can give you advice and guidance on everything from accommodation to money management and support for disabled students. The University can also advise you about your eligibility for student funding, such as grants, loans and benefits.

Our International Student Welfare Advisers help international students settle into life at Liverpool and the University. They are experienced in dealing with issues that international students may face when moving to a new country, such as visa renewal, accommodation, financial concerns and setting up a new home.

**I feel really supported and being able to chat to your tutors like friends is brilliant**

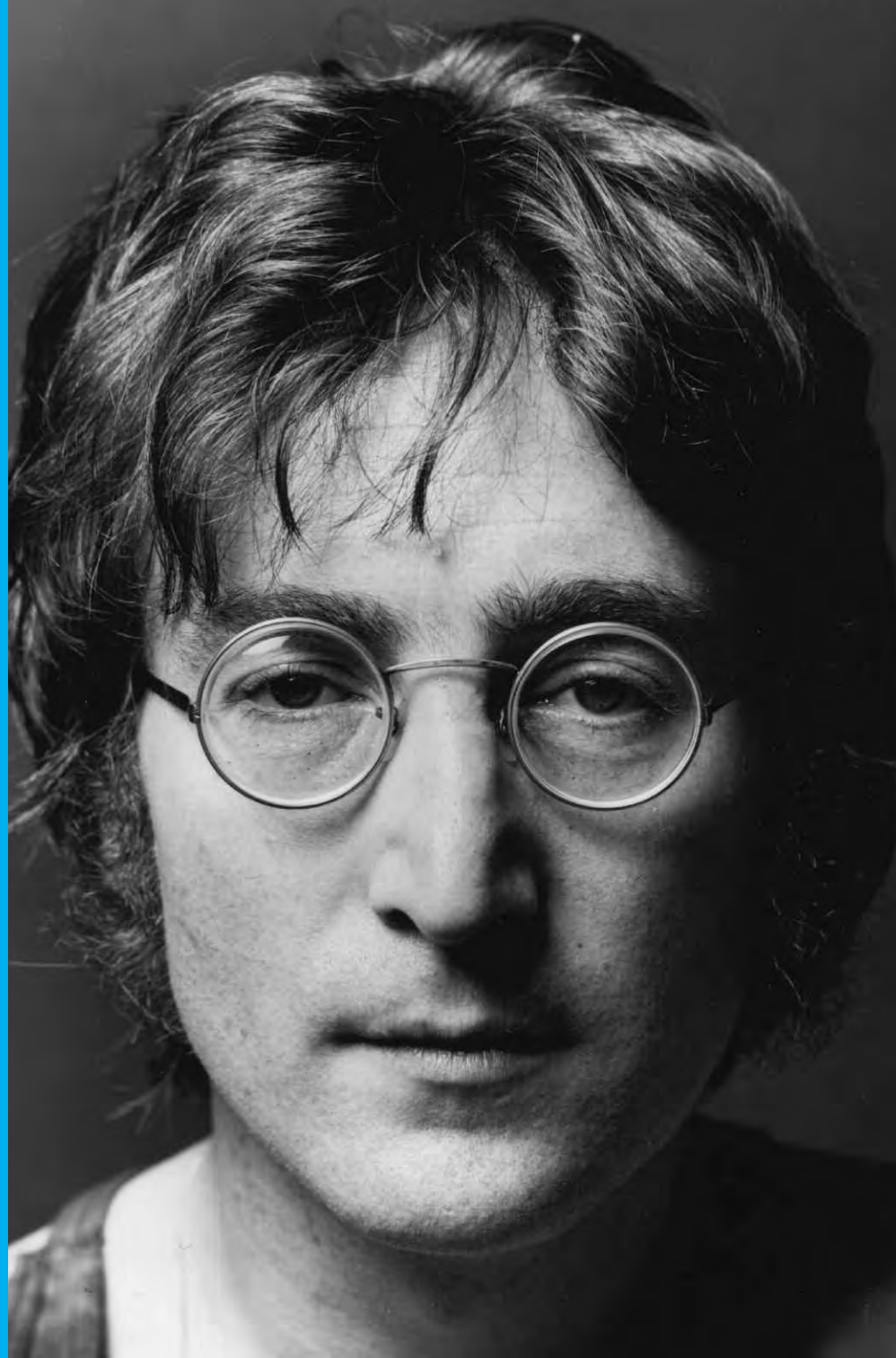
**Vinod Kumar, BSc (Hons) Nursing Studies**



Providing a service for people who have no stable family has really made me feel like there are people who care.



Sam, BA (Hons) Education Studies and English



# support for care leavers

In 1957, John Lennon joined our School of Art and Design, and it was to provide the springboard for so many influential aspects of his life. It was where he met his first wife as well as Stuart Sutcliffe and Paul McCartney. In recognition of the influence that the College played in his life, and thanks to the generous support of Yoko Ono, LJMU has been able to set up the John Lennon Imagine Awards to help students who have either been in local authority care or who are estranged from their parents.

- Dedicated point of contact for students who are care leavers
- Targeted support includes non-repayable annual bursary plus year round accommodation if needed
- Contact LJMU for more information on the range of support available by emailing: [careleavers@ljmu.ac.uk](mailto:careleavers@ljmu.ac.uk)



The John Lennon Imagine Awards will provide extra support for young people who perhaps need it most. I am delighted to have been able to set up these awards in John's name... he genuinely would have wanted to have helped these students achieve their personal goals. **Yoko Ono**



The Frank Buttle Trust



There's no doubt that **business-savvy** graduates get jobs with **higher salaries** and while money may not be your only motivating factor, getting a **job with prospects** probably is. By studying at LJMU, you will have the skills, qualifications and CV required for a graduate-entry job by the time you leave university.

# achieve

# pole position



“ I've got 8 groups of students looking at different aspects of the car's design, from the chassis to its wheels and tyres, and making sure they all hit their targets is very challenging. You'd struggle to get this managerial experience on other engineering placements.

**Zhivko Staynov (right)**  
**BEng Automotive Engineering**

”



“ This is the best placement you could have if you want experience of project management in the automotive industry. **Jack Clisby (left) BEng Automotive Engineering** ”

Zhivko and Jack have both held the challenging position of Team Leader for LJMU's Formula Student Racing Team. This year-long position takes the form of an industrial placement and competing against 105 universities from 23 countries, the Formula Student team has to design and build a car from scratch and then race it on the Silverstone Grand Prix circuit. In 2011 they were the 4th highest UK university in Class 1.

“Completing the **World of Work Skills Certificate** really gave me the confidence to believe in my abilities and perform well in interviews. I was able to secure a job even before I graduated.

**Regina Danku, BSc (Hons) Maritime Business and Management**

”



career matters

Whatever your professional ambitions, LJMU's employability advisers and work-based learning units can help you find work-related learning that will enhance your CV and add value to your university experience.

- high-quality careers advice and guidance
- skills support and employability staff
- work-based learning units
- dedicated business advisers for student and graduate entrepreneurs and freelancers

over **1,000 organisations** have signed up to **LJMU's vacancy website**, a one-stop-shop for students looking for part-time work, graduate jobs, work placements and much more

“The focus LJMU puts on providing students with both the practical skills and theoretical knowledge required by industry played a pivotal role in my success, both academically and professionally.”

Former Royal Marine Gary Jones graduated with a First Class degree in Information Systems and now works for Hewlett Packard as a Technology Consultant.



## more than just careers advice

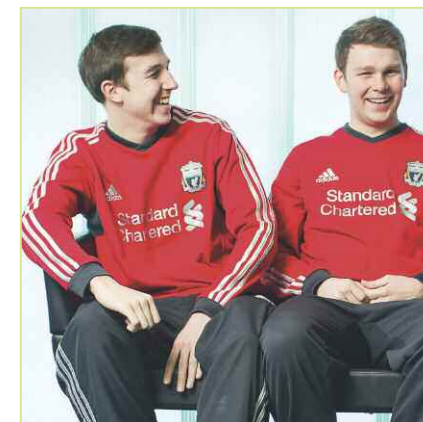
Our World of Work Careers Centre is a dedicated training and development facility for students and graduates of the University. The Centre hosts regular fairs, masterclasses and networking events which enable students to meet and network with employers.

Our year-round Ready-for-Work Programme covers areas such as CV writing, application and selection centre techniques,

psychometric testing and filmed mock interviews. In addition, the University's career and employability advisers, trainers and business advisers provide both group and one-to-one support.

LJMU continues to support graduates long after they have left the University via the Career Plus portal, which offers personal and career development sessions, regional events, webinars and access to job vacancies.

Thanks to LJMU's Football Exchange research consultancy, our Sport and Exercise Science students secure placements with Everton, Liverpool and other league clubs.







# your dream job awaits

Whatever your career aspirations, you have to be able to tailor your qualifications, skills and experience to meet the specific criteria relevant to the role you are applying for; a bog-standard CV will not be enough to get you an interview. That's where the World of Work Skills Certificate will be invaluable. Representatives from 100+ organisations and businesses across the North West of

England are giving our students vital experience of how to succeed in graduate-entry level interviews in their chosen sector. This is the final interview stage of the World of Work Programme and crucially it is these employers who will judge whether or not you have reached the necessary standards to receive your Skills Certificate.

“ Studying nursing at LJMU is the best decision I've made in years. It is challenging but I'd recommend the experience wholeheartedly. Now I have a great career ahead of me. ”

**Peter Dickinson,**  
**BSc (Hons) Adult Nursing**

“ LJMU was the perfect choice for me because my degree is recognised in Canada and it is very well ranked academically. ”

**Undergraduate Pharmacy student**  
**Stephanie Morson**



# hitting the gold standard

The Sports Scholarship Scheme powerfully reflects LJMU's ethos of Dream Plan Achieve. This flexible, individually tailored programme combines our internationally-respected sports science testing, research and specialist lifestyle support with targeted academic support to enable outstanding students to achieve their sporting and academic ambitions.

For more details go to [www.ljmu.ac.uk/sport](http://www.ljmu.ac.uk/sport)



# fees and funding

make sure you apply for student **funding** as early as you can

For information on how to apply plus details on the range of support available to students from England, Scotland, Wales, Northern Ireland and the EU, go to:  
[www.direct.gov.uk](http://www.direct.gov.uk)



Broadly speaking you will face two main expenses while at LJMU – tuition fees and your living expenses. The good news is that you can receive help for both in the form of grants, loans, bursaries and scholarships.

#### A problem shared

We have a dedicated team of staff that can offer you confidential advice on how to manage your finances and ensure you maximise your income while you are a student.

For the most up-to-date information on fees, student loans, scholarships and much more please go to:  
[www.ljmu.ac.uk/feesandfunding](http://www.ljmu.ac.uk/feesandfunding)

# fees and funding: the facts

Here are the facts about what your university education will really cost and how you will be expected to pay for it.

- LJMU, along with most universities, charge an annual tuition fee of £9,000\* for the majority of its undergraduate programmes.
- You don't have to pay these tuition fees up front – as long as you have not been to university before and meet the residency rules you can take out a tuition fee loan for each year of your course.
- You can also take out a maintenance or living cost loan to cover your living expenses, such as rent and food, etc. Again you can take out a loan for each year of your course.
- You don't start paying back your student loans until after you've left university and start earning at least £21,000.
- Your monthly repayments will be based on what you are earning not how much you borrowed from the Student Loans Company.
- If your household income is less than £42,611 you will qualify for additional funding that doesn't have to be paid back. If it's less than £25,000 you will qualify for even more financial support.
- LJMU offers a range of targeted support for students from lower income households in addition to a range of scholarships for talented and academically gifted students. These bursaries and scholarships do not have to be paid back.
- Targeted support is available to students with disabilities, who are parents and who are care leavers.

\* Subject to approval of our OFFA Access Agreement

# student loans

## Tuition fee loans

Most full and part-time students will be able to take out a tuition fee loan for each year of their course. This loan is not means-tested which means that your household income will not affect your eligibility for this funding.

Your tuition fee loan covers all your tuition costs. This means you only have to budget for your living costs. You may be able to get help with your living costs too, through maintenance loans or grants and bursaries, which you don't have to pay back.

## Living expenses (maintenance) loan

Most full-time undergraduate students can also apply for a maintenance loan to cover their living costs. If you're eligible you can take out a loan for each year of your course. The amount you'll receive will depend on your household income, what you're studying and if you are entitled to the maintenance grant. This money goes straight into your bank or building society account - in three instalments - and it's up to you to decide what you spend this money on.

## Paying back your student loans

You only start paying back your student loans the April after you have graduated or left university and start earning £21,000 or more. Repayments are based on a percentage of your salary not how much you have borrowed from the Student Loans Company. When you start paying back your student loans, you will only make one affordable monthly payment, just like tax and national insurance.

**Did you know that a graduate will, on average, earn an additional £160,000 over their lifetime compared to non-graduates and even in times of recession people with degrees are more likely to get a job than those who don't?**

# money you don't have to pay back

## Maintenance Grant\*

If you are a full-time student and your household income is **£42,611** or less, you can get a non-repayable living cost grant. You don't have to pay this money back and it's up to you to decide what to spend it on. If you are a full-time student with a household income of **£25,000** or less you will receive a full grant of **£3,354** per year. Partial grants will be available if you have a household income over **£25,000** up to (and including) **£42,611**.

## LJMU Bursary and Scholarships

LJMU provides targeted financial support to students from lower income households in addition to a range of scholarships for talented and academically gifted students. These awards do not have to be paid back and are awarded in addition to student loans and maintenance grants.

## The National Scholarship Programme

The National Scholarship Programme supports students from low income households. Full and part-time undergraduate students are eligible to apply for these Scholarships, worth up to £3,000 (pro-rata).

**For the latest details on all the funding and support available from LJMU, go to [www.ljmu.ac.uk/feesandfunding](http://www.ljmu.ac.uk/feesandfunding)**

[www.ljmu.ac.uk/feesandfunding](http://www.ljmu.ac.uk/feesandfunding)

\* Figures based on students that normally live in England

# Quick Guide to Student Finance

Funding	How much is this worth?	Is this funding based on my household income?	Are part-time students eligible for this funding?	How many will be awarded	How will this money be paid?	Does this money have to be paid back?
<b>Tuition Fee Loan*</b>	£9,000 a year for full-time students £6,000 for full-time students on a foundation course	No	Yes, on a pro-rata basis	All eligible students are entitled to take out a tuition fee loan	Direct to LJMU	Yes, but only after you've left university and are earning at least £21,000
<b>Maintenance Loan*</b>	Up to £5,500 if you are living away from home Up to £4,375 if you are living in your parents' house	Yes, partially	No	All eligible students are entitled to take out a maintenance loan	In three instalments to your bank or building society account	Yes, but only after you've left university and are earning at least £21,000
<b>Maintenance Grant*</b>	£3,354 a year if your household income is £25,000 or less Partial grants awarded if your household income is between £25,000 and £42,611	Yes	No	All students who meet the eligibility criteria automatically receive a grant	In three instalments to your bank or building society account	No
<b>LJMU Bursary and Scholarships</b>	See <a href="http://www.ljmu.ac.uk/feesandfunding">www.ljmu.ac.uk/feesandfunding</a> for details					
<b>National Scholarships for first year undergraduate students</b>	Up to £3,000	Yes	Yes, on a pro-rata basis	To be confirmed	To be confirmed	No
<b>LJMU Care Leavers (John Lennon Imagine) Awards</b>	£1,000 a year	No	No	Not applicable	In instalments to your bank or building society account	No
<b>Disabled Students' Allowance*</b>	Not applicable	Support determined by need not income	Yes	Not applicable	Not applicable	No
<b>Adult Dependants' Grant</b>	Up to £2,642	Yes	No	Not applicable	Direct to your bank or building society account	No
<b>Childcare Grant*</b>	Up to 85% of childcare costs	Yes, and your children must be in registered or approved childcare	No	Not applicable	Direct to your bank or building society account	No
<b>Parents' Learning Allowance*</b>	Depends on course-related costs, with a maximum award of £1,505	Yes, and you must be a parent and studying full-time	No	Not applicable	Direct to your bank or building society account	No

# funding advice for international students

Studying at LJMU offers international students excellent value for money and the opportunity to secure an internationally-respected qualification plus outstanding career prospects.

When you apply for your visa or entry clearance, you will need to provide evidence of having enough money to support yourself for the duration of your programme and to pay for all of your living expenses. The good news is that the cost of living in Liverpool is one of the lowest in England, which means your money will go even further, allowing you to enjoy your student experience to the full.

## Tuition fees

International students are liable to pay a minimum of 50% of their tuition fees when they complete their enrolment at the University. The outstanding balance must be paid in full within 4 months of your enrolment date.

**Confirmed fees for 2013/14 are available on the LJMU website [www.ljmu.ac.uk/international](http://www.ljmu.ac.uk/international)**

## Living costs

In addition to academic fees, you must budget for living costs such as accommodation, food, clothing, books, local travel and entertainment. The UKBA requires that students studying outside London must have £7,200 to pay for their living costs (or £800 per month). LJMU's undergraduate courses run over an academic calendar of nine months so you will need to show that you have at least £7,200. If your course lasts 6 months you will need to demonstrate you have £4,800.

## LJMU International Academic Awards

All international students applying to LJMU for full degrees starting in the academic year September 2013 to September 2014 will be entitled to an international academic award of £1,000. This award will be offered at source and deducted from your Year 1 tuition fees.



# LJMU awarded scholarships and bursaries worth over £7 million in 2011/2012

LJMU provides targeted financial support to students from lower income households in addition to a range of scholarships for talented and academically gifted students. These awards do not have to be paid back and are awarded in addition to student loans and maintenance grants.

For the latest details on all the funding and support available from LJMU, go to [www.ljmu.ac.uk/feesandfunding](http://www.ljmu.ac.uk/feesandfunding)

## Support for students with disabilities

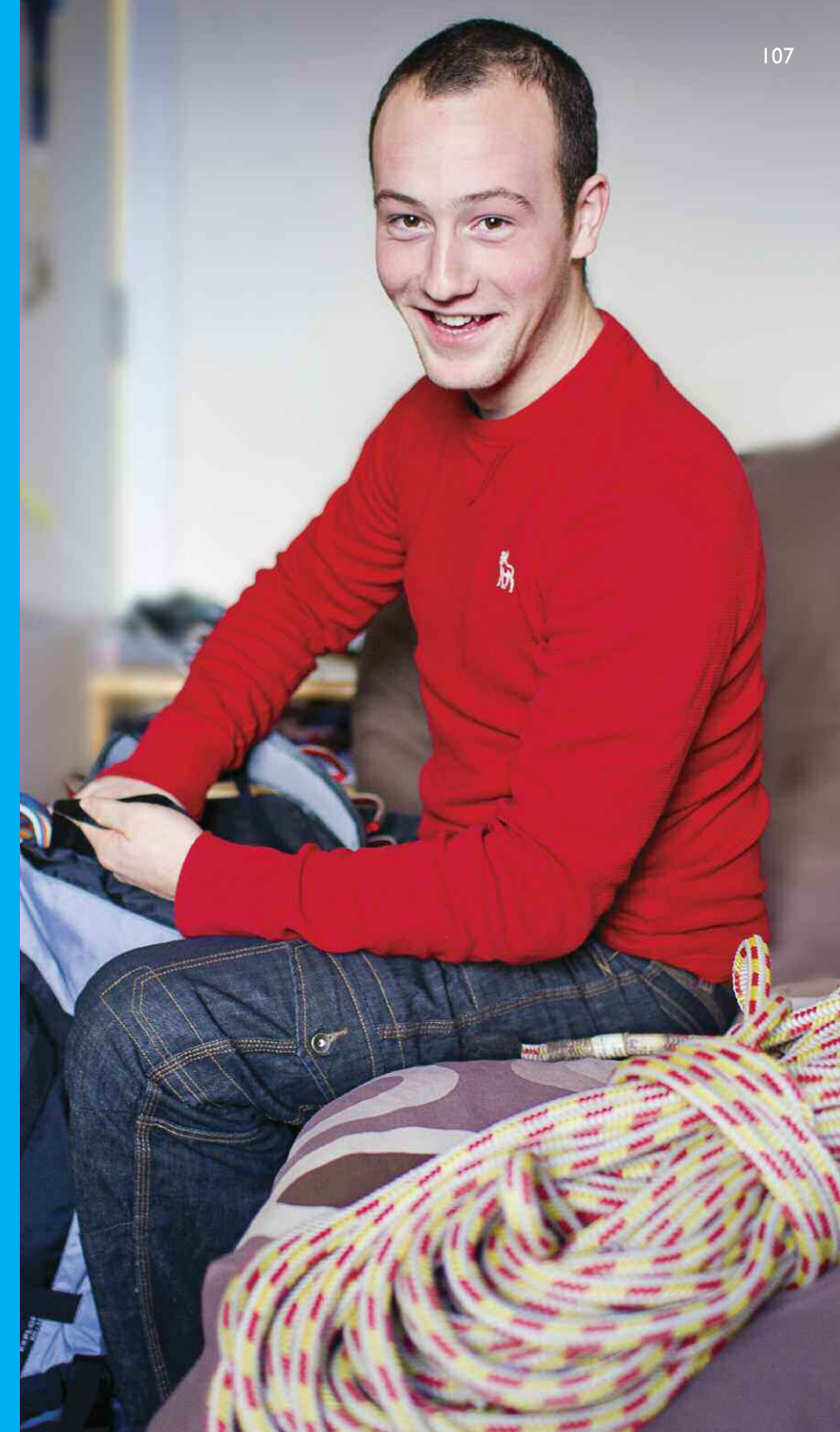
Disabled Students' Allowances or DSAs are grants to help meet the extra course costs that students may face as a direct result of a disability, ongoing health condition, mental health condition or specific learning difficulty. The type of support you receive is determined by your specific needs not your household income. LJMU has a dedicated disability team and an onsite assessment centre to assist you with the DSA process and ensure your study needs are met. Contact LJMU's Student Advice Team for more details.

“

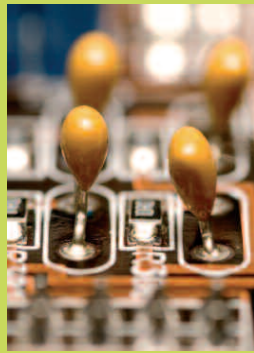
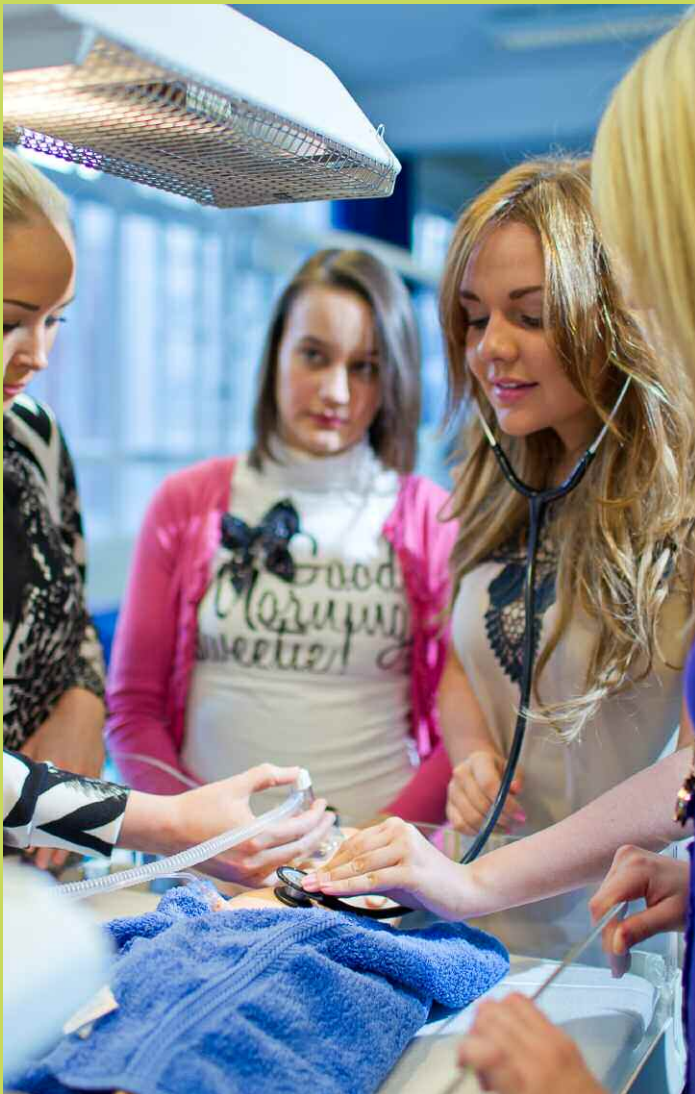
When I was thinking about what course to study LJMU stood out because it had a better focus on how you could succeed, not just while you're at uni but afterwards through the World of Work Programme. Now I'm here LJMU has more than lived up to my expectations. My course is so good I can't fault it.

”

**Outdoor and Environmental Education student Russ Gardner is just one of hundreds of students to receive an LJMU Scholarship, awarded in recognition of outstanding academic achievement and performance in other areas such as sports, music, and volunteering.**



# campus highlights



- All courses combine the latest theory with hands-on experience gained via specialist training and other work-related learning
- Internationally recognised research in astrophysics, anthropology, sport and exercise sciences, allied health sciences, general, electrical, mechanical and marine engineering, computing and the built environment
- Authentic hospital training environments and clinical practice suites for midwifery, adult nursing and paramedic students
- Excellent teaching laboratories and workshop facilities
- Outstanding student placement opportunities
- Specialist engineering and technology facilities include dedicated computer games, forensics and broadcast media laboratories, newly refurbished model structures, materials and hydraulics teaching facilities and a new General Engineering Research facility
- Successful LJMU formula student racing team
- Specialist science facilities include an indoor 70-metre running track, Forensic Science Laboratory, DEXA scanner for measuring body fat, muscles and bone density, driving simulator, neuroscience and psychophysiology facilities, eating behaviour laboratory, chronobiology lab and access to the world's largest robotic telescope
- The UK's most advanced marine simulation facilities
- Tom Reilly Building opened by Liverpool FC and England footballer Steven Gerrard
- Extensive computing facilities supporting industry standard software
- Field-work and lab-based projects central to all science programmes
- Professional body accreditation and recognition secured for many programmes
- Avril Roberts Learning Resource Centre





- All programmes emphasise the development of professional skills and competencies underpinned by sound theoretical and cutting-edge research
- The new £37 million Redmonds Building provides state-of-the-art facilities for the Liverpool Business School, School of Law and Liverpool Screen School
- Access to industry-standard newsrooms, filming, editing and post-production facilities, TV studios, radio and photographic studios
- RIBA Award-winning Art and Design Academy is home to the Liverpool School of Art and Design
- Fine art, print-making and life-drawing studios plus an architectural suite
- Purpose-built gallery, ceramic and metal fabrication workshops
- Aldham Roberts Learning Resource Centre
- Research directly contributes to contemporary teaching in fields such as Youth Justice, Criminology, Law, History and English
- Our law students routinely win national mooting, negotiation and mediation competitions, beating university teams from across the UK and Europe
- Dedicated work-based learning units
- The Liverpool Screen School is part of the BBC North Developing Talent scheme and an accredited Skillset Media Academy partner
- Extensive links with business, industry and professional practitioners in the UK and internationally



- LJMU has over 100 years' experience of delivering professional higher education courses and the University's expertise in PE, Sport and Dance is nationally recognised
- Excellent teaching facilities
- Campus easily accessible by public transport from Liverpool City Centre
- Wide range of computing and sports facilities
- Drama and dance studios
- Science, design and technology laboratories
- 86% of students rated our teacher training as good or very good
- Extensive work-based learning opportunities plus excellent links with primary and secondary schools
- Dance staff are nationally and internationally recognised
- The UK's highest rated outdoor education programme and 100% student satisfaction ratings
- Courses exploring food and nutrition, events management, tourism and leisure
- Dedicated Learning Resource Centre
- Work-related learning, including work placements, an integral part of all our courses
- Highly qualified and respected academic staff combine specialist knowledge and creative research with hands-on experience in their chosen fields