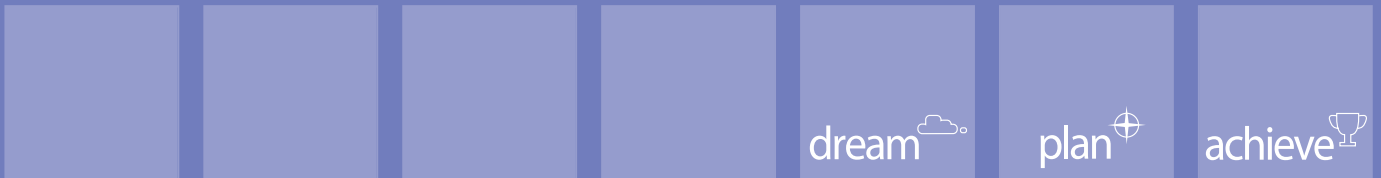




postgraduate study and research

Liverpool John Moores University



a welcome
from the
Vice Chancellor
Professor Nigel
Weatherill



Welcome to the LJMU postgraduate prospectus and thank you for your interest in Liverpool John Moores University.

Scholarship, research and learning is at the very heart of everything we do. It drives our curriculum and is the foundation of our interaction with industry, business and the community.

LJMU is renowned for its open and happy academic community. Diversity is valued. Endeavour is supported. Achievement is celebrated. The search for deeper understanding in whatever field you choose to specialise in is enormously important and you will receive every encouragement to fulfill your potential. More importantly, you will receive every opportunity to ensure that, wherever possible, your learning will have a meaningful outcome –

whether that be finding rewarding employment, embarking on further learning or starting your own enterprise.

But above all we want you to enjoy the journey. Discovery at the highest level of learning should be fascinating and absorbing, and I can guarantee that at LJMU, you will be working in world-class facilities alongside some of the best academics in their field; they enjoy what they do and they pursue their own research and learning with a passion and enthusiasm that permeates the whole University.

I do hope you choose to join our academic community. If you have aspiration and ambition, I can guarantee you won't be disappointed.



contents

Why LJMU	5
Postgraduate awards	12
Research excellence	18
Advancing your career	22
Learning resources	30
Student support services	34
Sporting facilities	36
Liverpool	38
Liverpool Students' Union	40
Accommodation	42
Fees and funding	44
Faculty overview	48
Entry requirements	70
How to apply	71

Shortlisted for the
most improved
student experience

(Times Higher Education
Awards 2010)

Shortlisted for
Outstanding
Library Team

(Times Higher
Leadership and
Management
Awards 2011)



Ranked 68th in the
UK for world-leading
(4*) research

1st Class Honours
in Green University
League Table

Winners of the
Business Leader of
Tomorrow award
three times in a row



Highest Research
Excellence Framework
(REF) rating for our
Physics submission

Queen's
Anniversary
Prize for excellence
in astronomy and
public engagement
in science



Liverpool John Moores University (LJMU) offers a superb environment for postgraduate study and top level research.

Whether you are studying for a taught master's course or embarking on a research degree, we offer you a supportive, flexible academic environment, well-structured programmes and round-the-clock access to extensive resources.

All of our postgraduate programmes are taught by academics actively involved in research or consultancy projects with business and industry. It is this combination of academic expertise and 'real world' experience that ensures LJMU's courses have real currency with potential employers.

We believe this expertise – coupled with world-class academic standards – 75% of LJMU's research is rated as internationally important – puts us in a league of our own.

To find out more about our postgraduate courses and research opportunities go to www.ljmu.ac.uk/courses/postgraduate

My studies were quite intensive but I still had space to develop my business China Pearl. The support I've received from the Centre for Entrepreneurship has been remarkable. They have provided a platform for me to showcase my business.

With support from LJMU's Centre for Entrepreneurship, **Huang Fenfen**, MA Marketing graduate, established China Pearl, a successful Chinese arts and culture organisation. She now has plans to establish an annual Chinese arts festival in Liverpool and expand her operations nationally and internationally.



a worthwhile investment

A postgraduate qualification from LJMU will help you fulfil your professional ambitions, boosting your career development and future earnings.

There are many reasons why people choose postgraduate study: to improve their job prospects by gaining more advanced skills and knowledge or to gain professional qualifications in order to follow a particular career. Others want to change jobs, apply for a promotion or explore a discipline they are passionate about.

Studying at LJMU will give you the edge because, crucially, we offer you an experience geared to meeting the needs of employers in all sectors. That's why the employment rate for our postgraduate students is consistently above the national average and amongst the highest in the North West.

Plus, research shows that completing the right postgraduate course could significantly increase your earning potential – with postgraduates on average earning 24% more than people with just an undergraduate degree.

Nearly 90% of our students secure graduate level employment within 6 months of completing their postgraduate qualification (HESA 2010)



Our research environment is rated as 'world-leading' in a majority of our subjects



“The lecturers were so supportive that I cannot thank them enough. So many elements of my course really prepared me for my next career steps, including involvement with national mediation and mooting competitions.”

Helen Richardson graduated with Distinction from LJMU's Graduate Diploma in Law. She was awarded a prestigious Lord Denning Scholarship by Lincoln's Inn which will cover the fees for her Bar Professional Training Course. The Graduate Diploma in Law is a one year full time programme that allows non-law graduates to gain exemptions in respect of qualifying as a solicitor or barrister.

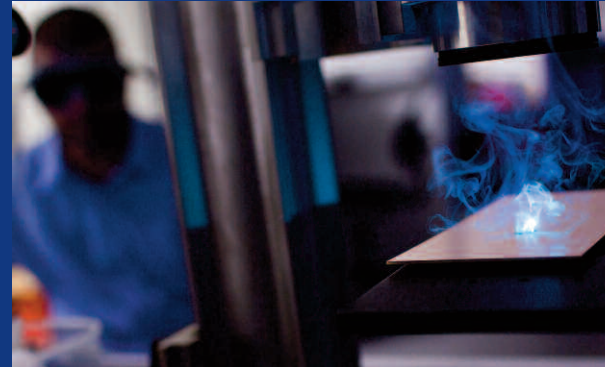
DID YOU KNOW THAT...



LJMU was founded in 1825 and is now the 10th largest university in the UK ■ **We're ranked 68th in the UK for world-leading (4*) research** ■ Over 75% of all LJMU research is rated as internationally important and this informs all areas of the curriculum ■ **Our Astrophysics Research Institute designed and developed the world's largest robotic telescopes and received a Times Higher Research Project of the Year Award for their work on Gamma Ray Bursts** ■ Our General Engineering Research Institute carries out world-class research ■ Our Centre for the Study of Crime, Criminalisation and Social Exclusion is carrying out pioneering research aimed at tackling anti-social behaviour ■ Our ground-breaking anthropology research proves that 1.5 million years ago, our human ancestors walked the same way we do today ■ **We launched the UK's first sports science degree, and today, our School of Sport and Exercise Sciences is ranked 'amongst the very best departments in the world'** ■ Our Centre for Public Health has World Health Organisation (WHO) status ■ We pioneered computer games degrees and have outstanding links with games developers, academics and industry professionals around the world ■ **LJMU was awarded its 5th university Oscar (National Teaching Fellowship) for innovative teaching in 2011** ■ We are a UK leader in entrepreneurship training and support ■ **Our Pharmacy School is one of the oldest in the UK and renowned for producing 'industry ready' graduates** ■ We have over 100 years expertise in delivering professional courses for the maritime industry

high quality teaching and research

Our postgraduate programmes are delivered by academics involved in innovative research. Furthermore, many are also engaged in exciting consultancy projects with a wide range of employers and organisations. It's this combination of academic expertise and 'real world' experience that helps ensure that our degrees are kept up-to-date, secure accreditation by key professional bodies and deliver the knowledge, skills and experience you need to achieve your professional ambitions.



1st for Electrical and Electronic Engineering, General Engineering, Sports-Related Studies, Architecture and Built Environment (joint holders)

2nd for Anthropology and Physics

3rd for Biological sciences

4th (joint) for Computer Science and Informatics

POSTGRADUATE opportunities

LJMU offers an extensive range of postgraduate taught programmes and research opportunities.

Postgraduate certificates and diplomas may enable you to secure a professional qualification needed for a particular career or can act as the initial stages of a taught Masters award

The **Postgraduate Certificate in Education** offers you a route into teaching if you already have a degree and mainly focuses on developing your teaching skills. LJMU also offers some PGCE subject conversion courses.

Our **Taught Masters (MA, MSc, PgCert, PgDip, MRes and PGCE)** build upon your undergraduate knowledge and skills. These can be studied 12 months full time. Many courses enable you to select specialist option modules based on your own interests and all will require you to complete a dissertation, an extensive piece of work based on in-depth research of a particular topic. Some courses are designed for students with little or no academic experience in the subject area.

The majority of the **Master of Research (MRes)** is focused around your individual research project work,

making this the ideal route for people wishing to pursue a research career. You will be assigned a dedicated academic mentor who will become your Director of Studies should you progress to a PhD programme.

Completing an **MPhil research programme** will require you to demonstrate competence in conducting an independent enquiry as well as using appropriate research methods and techniques. This award can be completed between one and four years, depending on whether you are a full or part-time student.

In order to achieve a **Doctorate or PhD** qualification you will have to show mastery of a specialist field and make an original personal contribution to the understanding of a problem, to the advancement of knowledge or to the generation of new ideas. These awards normally take between three and six years to complete, depending on your mode of study.

For details on all our postgraduate courses, go to www.ljmu.ac.uk/courses/postgraduate



The extra skills I have gained during this course have been great from an operational and marketing perspective. It has definitely been worth it.

Andrew Doyle enrolled on LJMU's Executive MBA to enhance his experiences and skills and allow him to branch into consultancy.



LJMU's degree preparation courses are managed and taught by Study Group, a world leader in education and training for international students.

degree preparation courses

LJMU offers international students the option of completing pre-postgraduate programmes at the University's International Study Centre.

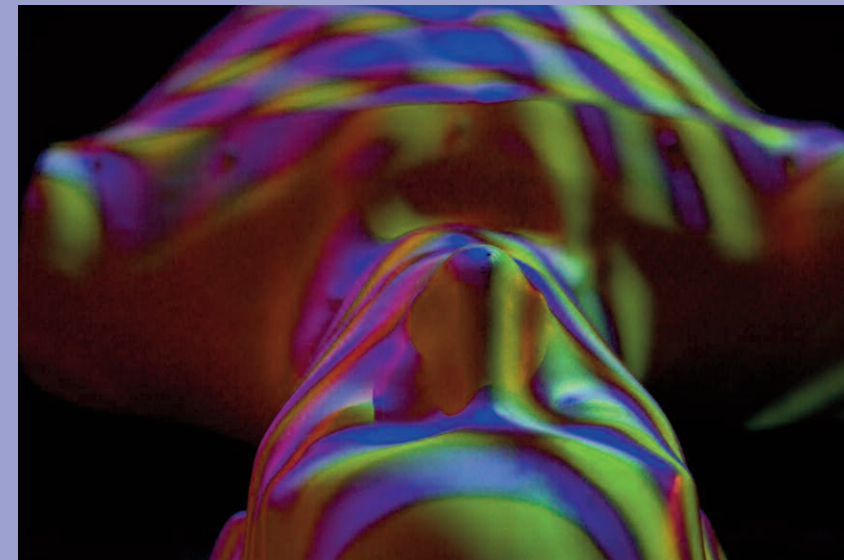
Our **Pre-Masters/Pre-MBA** is aimed at international students preparing for Masters or MBA degree study at LJMU. The programme combines academic subjects, research skills and English use in academic environments and is designed to help postgraduate students succeed in a UK university environment.

The 14 week Pre-Masters/Pre-MBA course is targeted at students with IELTS level of 5.5 or equivalent. This fast-track programme will develop your English skills up to IELTS level 7 while also introducing theories and business research methods. You can start the Pre-Masters/Pre-MBA course in either May or September each year.

For more details on LJMU's International Study Centre, go to www.ljmu.ac.uk/isc



The quality of LJMU's research is reflected in the University being awarded the highest Research Excellence Framework (REF) rating for our Physics submission in the UK in 2011.



RESEARCH for the real world

LJMU is one of the top performing new universities for Architecture and Built Environment, Electrical and Electronic Engineering, General Engineering, Physics and Sports-Related Studies. We also just narrowly missed being the top post-92 university for research income, receiving £12.3m in research grants in 2009-10 alone.

The range of research opportunities at LJMU is considerable. From developing cutting edge new technology to detect brain tumours more accurately and quickly to ground-breaking studies on the impact of the recession in UK cities, our researchers are helping to inform public policy, shape new laws, transform lives and improve the environment.

So if you are interested in carrying out your own research, you should think seriously about LJMU's MPhil and PhDs programmes. Supervision is available in each of our Faculties and we also offer Professional Doctorates, an alternative to a PhD for staff in organisations who want to research and develop their professional practice at doctorate level.

For more details on areas of research excellence in each of our Faculties, go to page 48.

LJMU demonstrates 'world-leading' research in 70% of its disciplines

Research Support Office

Whether you need advice on progressing to a PhD, information about examinations and research degree regulations or assistance with ethical approval, the Research Support Office (RSO) is on hand to give you the advice and guidance you need to succeed in your research.

The RSO provides administrative and training support for research students. A Research Student Induction Day is held six times a year and we also offer a generic skills training programme throughout the academic year. Collectively, these sessions will help you to develop transferable skills and gain worthwhile experience of delivering presentations, report writing, viva preparation plus a clear understanding of ethical approval processes and regulations.

To find out more about research at LJMU, go to www.ljmu.ac.uk/research



“I’ve had a fantastic time here. Academics have an outstanding reputation for their work and are known for being at the forefront of their field. I would recommend studying here.”

Originally from Mozambique, Valerio Ribeiro (pictured right) recently completed a PhD in Astrophysics at LJMU. He is now living in South Africa and working on the first phase of the Square Kilometre Array project – the world’s largest radio telescope.

opening up new career opportunities



Our postgraduates are highly sought after by employers and over 95% are in work or further study six months after graduation

LJMU enjoys close links with employers operating in all sectors of the economy. We have highly-effective relationships with a wide-range of organisations across the region, including councils, NHS trusts, charities, community and youth groups, schools, environmental groups, arts and culture companies, tourism bodies and leisure providers. These partnerships are crucial in helping our postgraduate students forge links with key contacts working in their specialist fields.

Postgraduate Employability Programme

LJMU's Postgraduate Employability Programme (PEP) offers more than just careers advice for Researchers and Early Career Researchers. This intensive four day programme combines career talks from lecturers across the University plus industry insights from representatives and professionals outside of academia such as Astra Zeneca and Cogent – The Skills Council for the science based industries. The programme is designed to help you gain insights on how to persuasively present yourself to employers, develop effective presentation and career management skills and explore career alternatives.

**more than
just careers
advice**

LJMU's Graduate Development Centre hosts regular fairs, master classes and networking events where you can meet and network with employers. The Ready for Work Programme covers areas such as CV writing, application and selection centre techniques, psychometric testing and filmed mock interviews. In addition, the University's career and employability advisers, trainers and business advisers provide both group and one-to-one support.

World of Work Programme

Competition for professional jobs is tough but we are confident that our unique World of Work Programme will enable you to compete against the best candidates and win. The programme has real credibility with employers because they helped us develop it and its employers – not LJMU – who'll decide if you qualify for your World of Work Skills Certificate.

The World of Work Programme – endorsed by FTSE 100 companies and leading business organisations – offers you the chance to get an additional certificate proving to potential employers that you have the

skills and experience they are looking for. No other university in the UK or internationally, offers students the chance to develop these skills and organisations backing the scheme include the Confederation of British Industry, United Utilities, Sony, Siemens, Peugeot Citroen and Marks and Spencer.

More and more postgraduate students and researchers are signing up to complete the Programme because they realise that they too need to demonstrate more than just academic credentials in order to succeed professionally.

For details go to www.ljmu.ac.uk

Here are just some of the employers we work with:



“ The interview with a graduate employer gives you ‘first-hand’ experience of what to expect in the real world job market. This experience has turned me into a full package for any employer. ”

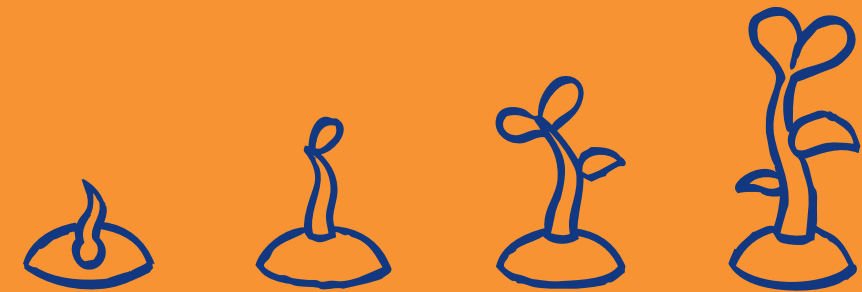
Onyekachi Kanu completed the World of Work Skills Certificate Programme alongside his MSc in Public Health (International Health Development).

A DEDICATED CENTRE FOR ENTREPRENEURSHIP



If you have ambitions to be your own boss or work freelance you can receive expert advice from LJMU's Centre for Entrepreneurship. The Student Enterprise Team provides a range of support to students pursuing business start-up ideas, such as access to funding, mentoring and specialist guidance. LJMU's Enterprise Fellowship Programme offers a very structured and practical approach, helping entrepreneurs achieve key milestones, like making your first sale.

For more details, go to: www.ljmu.ac.uk/startup



“The Centre for Entrepreneurship is a supportive environment that helps new businesses flourish and grow. Liverpool is a great place to start a business and our students and graduates make a huge contribution to the city.”

Emma Hunter, LJMU's Head of Student Entrepreneurship

RESOURCES

whenever and wherever
you need them...



Over the last ten years, LJMU has invested close to £160 million across the university, developing award-winning new buildings and improving existing facilities. This includes the new £37million Redmonds building which opens in summer 2012, providing industry-standard film and broadcasting studios as well as general teaching space and professional training facilities.

Learning resource centres

Our Learning Resource Centres provide access to all the resources and student support services you'll need to succeed in your postgraduate studies.

With 24/7 opening hours during semesters and designated postgraduate study areas, featuring larger desks, networked PCs, bookable meeting rooms and rooms to view DVDs; you can plan your study time to fit in around your other commitments.

The Learning Resource Centres have been carefully designed to make them as welcoming and attractive as possible. They are zoned to give you different spaces and facilities to work in groups, study quietly or meet fellow postgraduate students for a coffee.

The Centres are a 'one-stop shop' for students; you can get advice on everything from study skills to exam timetables and student funding, submit assignments, pay your fees as well as having access to all the resources you need for your research and coursework.

The Centres are fully accessible to all users, offering wheelchair access, hearing loop facilities, height adjustable workstations and specialised software to support visual or other specific learning needs.



24 hour access during semesters



Facilities include:

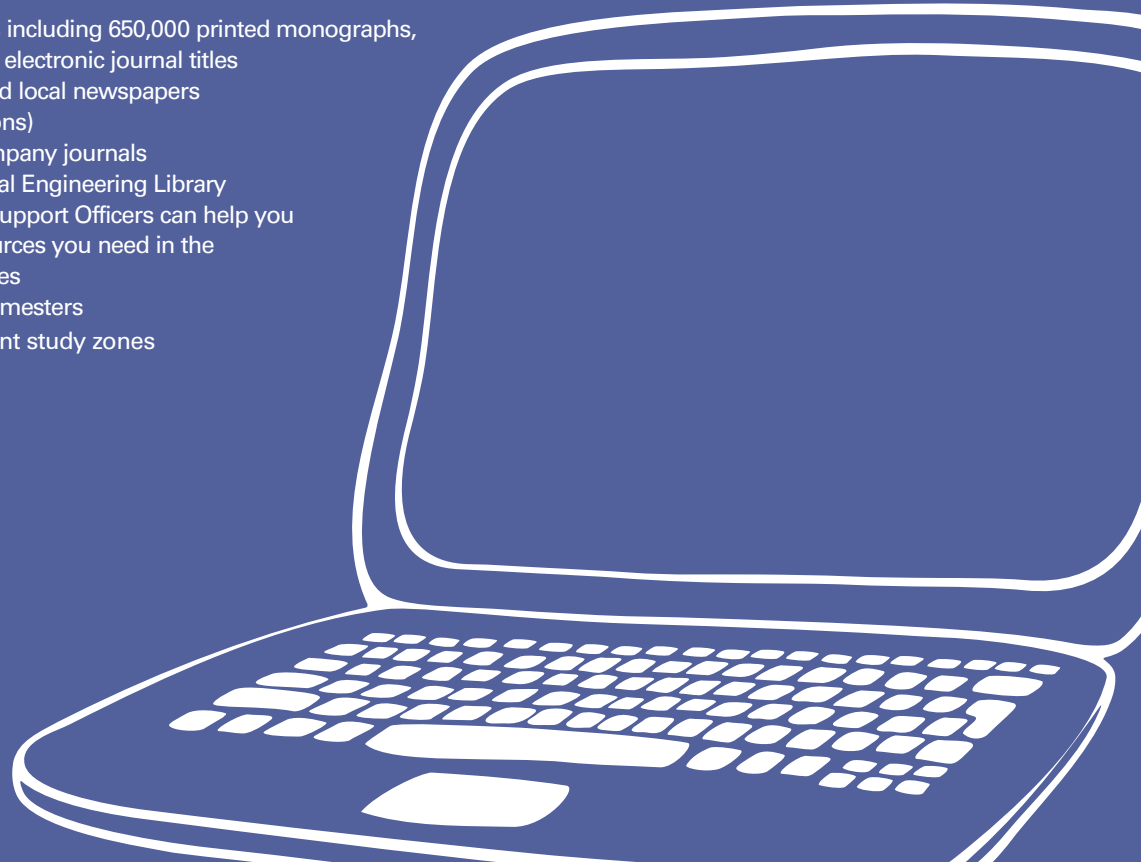
- **Wi-Fi access**
- **Networked PCs and applications**
- **Laptop loans**
- **Helpdesks on all sites with dedicated support from roving staff**
- **Induction sessions for new students**
- **2,000 study places**
- **Shortlisted for Outstanding Library Team in the Times Higher Education Awards 2011**
- **Dedicated subject specialists so that you can get expert guidance on your specific subject or area of interest**
- **E-journals and databases accessible 24 hours a day via our off-campus application**
- **You can manage your library account online renewing loans, checking when items need to be returned or reserving items for collection**
- **Blackboard, LJMU's virtual learning environment, provides links to lecture notes, useful internet sites and other multimedia resources**
- **Over 85% of students highly satisfied with library services**
- **A range of loan periods from 21 days to 'Room Use Only' and you can reserve books that are already on loan**
- **Inter-library loan system and online library catalogue**

21st century libraries

Every subject, every topic, every interest is covered in our libraries in formats ranging from DVD and CD to journals, satellite TV programmes and books. LJMU's electronic library gives you access to 22,000 electronic journals, newspapers, conference proceedings, maps, legal documents and much more.

Each Learning Resource Centre has collections specific to the academic needs of the Faculties and students it supports. As an LJMU student you can also view and borrow books and other items from all of the University's collections, not just those in your local Learning Resource Centre.

- More than 820,000 items including 650,000 printed monographs, 120,000 eBooks, 50,000+ electronic journal titles
- International, national and local newspapers (including archived editions)
- Legal databases and company journals
- Access to the International Engineering Library
- Research and Learning Support Officers can help you find and use all the resources you need in the Learning Resource Centres
- 24 hour access during semesters
- Dedicated quiet and silent study zones



Our **Special Collections** and **Archives** area

incorporates an archives consultation area, researchers' work room, professional sound studio and staff and student social space.

LJMU has a growing national and international reputation as a centre of excellence for the study and research of popular culture.

Research interests include British theatre, popular music, British social history, journalism, new media and youth culture. Our collections offer a wealth of information covering all subject areas, including e-Journal archives into the eighteenth and nineteenth centuries, digital images and online business information, such as share prices and market research reports. The Collections also include rare children's illustrated books, antiquarian books, artists' books and limited editions.

- Ray Coleman Archive including Beatles interview tapes
- The Jon Savage Archive 'England's Dreaming' Collection includes rare magazines, fanzines and rarely seen photographs of punk icons
- Liverpool's Everyman Theatre Archive includes rare posters, programmes, press cuttings and unpublished scripts by playwright Willy Russell





SUPPORT

when you need it

Many of our postgraduate students join LJMU after a significant time away from formal education. To help ensure that all students get the most out of their university experience, we run workshops on various aspects of postgraduate study, such as academic writing, effective reading skills, exam and revision skills, report writing, IT skills and much more. We are committed to helping you succeed, whatever your goals for the future. Now all you need to do is choose the course that's right for you.

“ LJMU’s supportive academic and technical staff are always available to help you out and my Learning Resource Centre is full of excellent academic resources. ”

Originally from Malaysia **Melissa The** completed her BSc (Hons) Human Psychology as part of LJMU’s Summer Semester programme. She enjoyed the experience so much that she enrolled on the MSc Occupational Psychology, which is recognised by the British Psychological Society. After she graduates, Melissa is planning to work in a recruitment or training and development agency.



Our **Student Advice and Wellbeing Team** can give you advice and guidance on everything from your physical and mental health, to accommodation, money management and help with childcare.

LJMU’s **Counselling Service** is free and open to all students, offering one-to-one and group sessions, as well as general counselling advice.

Our **Lunchtime Study Skills Sessions** provide a ‘drop-in’ session every weekday, giving postgraduates easy access to study advice without having to make an appointment with a personal tutor. All sessions are led by trained academic and support staff.

Our **Spiritual Support Team** offers confidential, non-judgemental pastoral care and support to students of all beliefs and backgrounds. We have facilities for quiet meditation, prayer and contemplation in each of our three campuses, as well as dedicated space for Muslim prayers.

- Equality of opportunity for all students
- Assessment Room for students with disabilities and additional support
- Disability Co-ordinators
- University-wide commitment to recruiting more students from Black and Minority Ethnic Groups
- Our dedicated disability team and mental health worker provide expert advice, guidance and support



sport for all

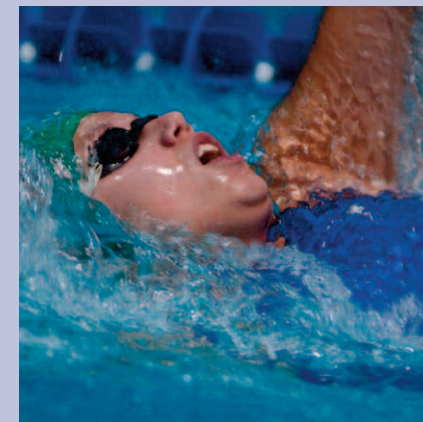
LJMU offers sporting opportunities for every student regardless of your ability or background. As a postgraduate student or researcher you will be eligible for off-peak membership to 12 Lifestyles Fitness Centres across Liverpool.

Membership covers a host of activities and facilities: keep fit classes, top-of-the-range gym equipment and fitness suites, tennis, squash, and badminton courts, an Olympic-sized swimming pool and two golf courses.

Our Sports Scholarship Scheme is helping athletes jump higher, run faster and perform better thanks to targeted support from our internationally-acclaimed School of Sport and Exercise Science and personalised academic support. Many scholars are currently competing for a place to win Olympic gold with Team GB in athletics, gymnastics, bobsleigh, water polo and boxing.

LJMU student teams consistently compete and win major titles in inter-university leagues and competitions. The Liverpool Students' Union currently offers clubs in American football, athletics, boxing, badminton, basketball, cricket, men and women's Gaelic football, football, hockey, volleyball and rugby teams as well as lacrosse, netball, swimming and tennis.

For more information, go to www.ljmu.ac.uk/sport



“ I picked LJMU because it has very good links with the football clubs. I completed an internship with Everton FC when I was an undergraduate and now I am getting the chance to go to Mexico and carry out my research with a professional team. My experience at LJMU has been fantastic. ”

MSc Sports Psychology student Jansen Moreno previously completed LJMU's BSc (Hons) in Science and Football.

LIVERPOOL

the 24 hour student city...



Liverpool is a fantastic student city, bursting with opportunities and lots of things to do: a legendary music scene that's bigger than just the Beatles, a city centre bursting with clubs, pubs, bars, restaurants and cafes. Plus award-winning shopping facilities, museums, galleries and theatres, not to mention two Premier League football clubs, golf courses, beautiful parks and outstanding countryside a few miles up the motorway. Liverpool is also a city that is very supportive of all the students who live, work and study in its universities. With such a warm and hospitable culture – Liverpool is the perfect 24-hour student city.

Merseyside has a comprehensive public transport network serving Liverpool City Centre and the surrounding area. Public transport options include buses, trains and the famous Mersey Ferries and are a great way of getting to and from LJMU and around and about the wider area.

Liverpool is a compact city and the two main LJMU campus areas (City and Mount Pleasant) are within easy walking distance of most of the halls of residences, as well as the city centre and interconnecting public transport routes.



get involved in **STUDENT LIFE**

The Liverpool Students' Union is at the heart of the LJMU student experience and membership entitles you to a wealth of benefits, support, sporting and social opportunities.

SPORTS, CLUBS AND SOCIETIES

With over 80 different sports, clubs and societies on offer at LiverpoolSU, there are loads of opportunities to meet new people and try something different. For a full list of sports, clubs and societies, go to: www.liverpoolsu.com

SUPPORT WHEN YOU NEED IT

Thanks to its active network of course reps issues affecting your academic experience can be brought to the University via LiverpoolSU. The Union also provides independent advice and guidance on all academic matters.

Your annually elected Sabbatical Officers (Sabbs) regularly canvass students for feedback on the student experience through the Better Union, Better City and Better University forums that take place every month. Everyone is welcome at these meetings and the Sabbs use this feedback to lobby LJMU for changes to the student experience.

THE HAIGH

LiverpoolSU's Haigh Building has a student bar, café and shop as well a range of other services for students. Whether you want to grab a bite to eat between lectures, have a quiet drink at the end of the day or get ready for a night out, Scholars bar is the place to go. Scholars also offer a wide range of pre-club warm up entertainment.

To find out more, go to www.liverpoolsu.com

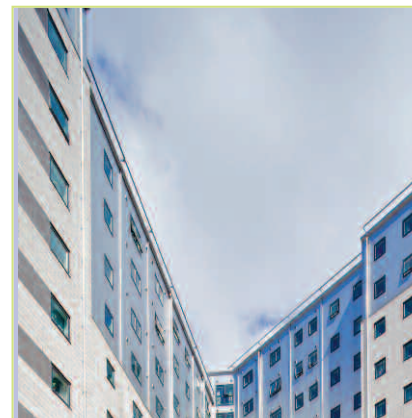
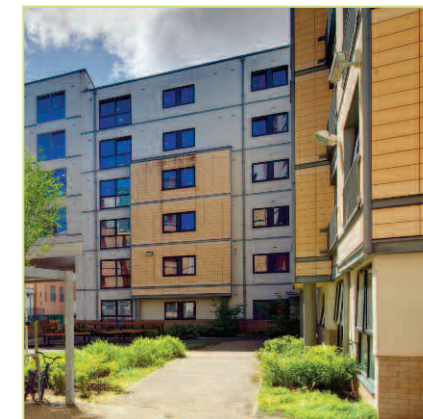
student accommodation

Each year LJMU sets aside bedrooms for new postgraduate students in its approved student accommodation. This accommodation includes both en-suite study bedrooms plus a limited number of self contained studio flats. Please note, unfortunately we are unable to offer this accommodation to current LJMU undergraduates who decide to undertake further postgraduate study at the University. For further details go to: www.ljmu.ac.uk/accommodation

Private rented accommodation

As the official student housing agency set up by LJMU and the other Liverpool-based universities, Liverpool Student Homes (LSH) only promotes private houses and flats owned by landlords who have signed up to a Code of Practice. This Code offers you a high degree of protection plus a complaints procedure in case anything goes wrong. So if you are looking for private rented accommodation, please check out www.ljmu.ac.uk/lsh first.

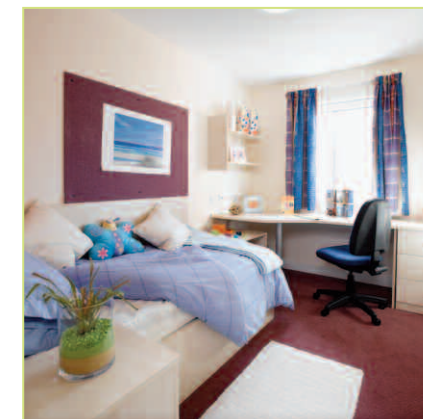
Our modern student accommodation is within easy walking distance of most of our teaching buildings.



The average cost for a **single bedroom** with a **private bathroom** within a shared flat is **£97 per week** (2011/2012).



our student accommodation is amongst the cheapest for any large UK city university



FEEES AND FUNDING



LJMU can give you comprehensive advice on the funding available to postgraduates on both taught and research programmes, including special grants and bursaries from research councils, grant-making trusts and charities.

Research by the Higher Education Policy Institute indicates that postgraduates earn significantly more than graduates with a first class honours degree. However, the downside is that postgraduate funding can be difficult to come by. So it is very important to be aware of the sources of funding available before you embark on further study.

It is also crucial to choose the right course that will help you meet your future employment goals. We can help you select both the right course and source up-to-date information about fees and funding.

Earn while you learn

According to the Higher Education Statistics Agency (HESA), almost half of all postgraduate students study part time. Working while you study means you may be able to pay for your course without taking out any further loans or at least reducing the amount you need to borrow. Working while you study also gives you the skills valued by employers, such as managing your workload and prioritising your time.

LJMU's Vacancy website can help you find graduate vacancies, sandwich/industrial placements, internships/summer work, part-time jobs, volunteering opportunities and work-based learning placements. Over 1,000 local and regional employers regularly list opportunities on the website.

LJMU also works with WorkBank, a commercial employment agency providing a wide range of better paid student jobs across Merseyside in retail, administration, postal services, secretarial, call centres, computing, translation and marketing. Workbank is based in our Students' Union.

LJMU Postgraduate Awards for LJMU graduates

LJMU is keen to support students progressing from one of our undergraduate programmes onto postgraduate study at the University. We will award eligible students a one-off £500 Postgraduate Award to help with their living and course-related costs.

Professional Career Development Loans

Many students fund their postgraduate studies via Professional Career Development Loans (PCDL). These loans are used by students to enhance their job skills or career prospects. This is a bank loan which you will have to pay back once you've completed the course. However, while you are studying any interest on the loan will be paid for you by the Skills Funding Agency.

Funding for postgraduate researchers

The main awarding bodies are the Research Councils, but funding may also be available from Trusts and Charities or National Bodies and Government Departments. Industry

sponsorship, bank loan schemes and Career Development Loans may also be available. For more detailed guidance, we would recommend that you visit the Prospects Postgraduate website: www.prospects.ac.uk

You may also want to check the Grants Register, published annually by Palgrave Macmillan and the Directory of Grant Making Trusts, published annually by the Directory of Social Change.

LJMU also publishes a summary of Research Councils, Trusts and Charities, National Bodies and Government Departments, which can be found at: www.ljmu.ac.uk/RGSO

Disabled postgraduate students

Full and part-time postgraduate students with a disability or on-going medical condition may be eligible for assistance with costs to support them during their studies.

You should apply for the Disabled Students Allowance (DSA) via your funding body, for example, your Research Council or the NHS and they will be responsible for providing this support. This support is not means tested; it is based on need.

LJMU's Disability team is available to provide advice and support both before you start and during your studies on areas such as how to apply for Disabled Students' Allowance, arranging personal support workers and facilitating needs assessments.

Workplace funding

Some organisations and companies fund the cost of postgraduate studies for their employees as they recognise the value of having such well qualified staff. Why not check out our courses and see if there are any on offer that could enhance your current career. You can then discuss funding options with your employer.

Statutory funding

If you are interested in following a PGCE course, the PG Dip in Architecture or the MA in Social Work, you may qualify for some level of statutory funding.

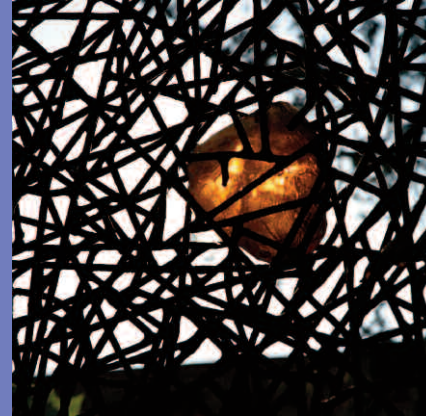
FACULTY MATTERS



LJMU's five Faculties offer you an extensive choice of undergraduate and postgraduate taught programmes and research opportunities.

This section is designed to give you an overview of activities and expertise of each of these Faculties.

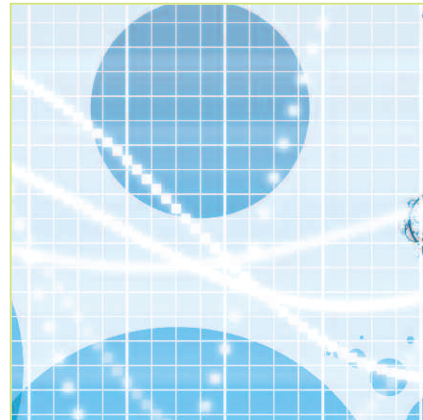
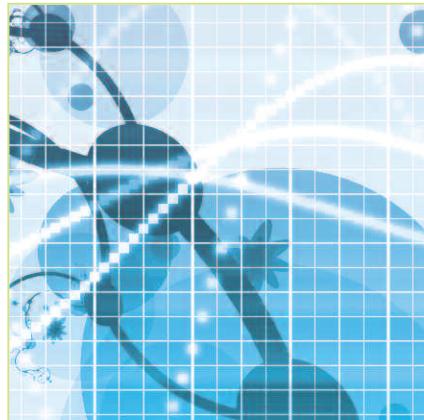
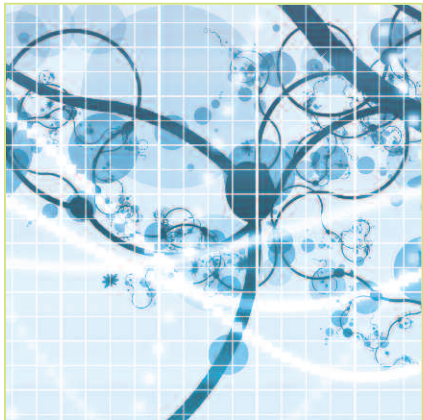
For details on all our courses, go to www.ljmu.ac.uk/courses/postgraduate



The Faculty of Arts, Professional and Social Studies

- All programmes emphasise the development of professional skills and competencies
- The £37 million Redmonds Building provides state-of-the-art facilities for the Liverpool Business School, School of Law and Liverpool Screen School
- Access to industry-standard newsrooms, filming, editing and post-production facilities, TV studios, radio and photographic studios
- The RIBA Award-winning Art and Design Academy is home to the Liverpool School of Art and Design
- Fine art, print-making and life-drawing studios, sit side-by-side with an architectural suite, plus a purpose-built gallery, ceramic and metal fabrication workshops

The Faculty is the largest in the University, containing five schools and has extensive links with business, industry and professional practitioners in the UK and internationally. Combined with cutting-edge research, scholarship and consultancy work, this helps ensure programmes are kept up-to-date with new developments and contemporary thinking.



LIVERPOOL SCREEN SCHOOL research covers a number of high-profile national and international areas across four key programmes. **Film Studies** research examines European cinema, early Hollywood, documentary practice, film theory and film-philosophy. The influential Liverpool Film Seminar provides the opportunity to hear international film scholars talk about their recent work. The **Centre for Responsible Journalism's** current research focuses on: Journalism Regulation; privacy; codes of conduct; interviewing vulnerable people; social media journalism; journalism in minority languages as well as work on radio and journalism and international relations and journalism. **Drama** has expertise and interests in both practical and more traditional academic research. Practical areas include play and screen writing, devising and the creation of new work, directing, acting and stand-up comedy. Other projects focus on regional and local theatre, contemporary performance practice, applied theatre and ethnodrama. The **Centre for Writing's** team of tutor-writers includes published poets, novelists, short story writers, screenwriters, and writers for stage and radio. The Centre also manages the 'Free to Write Project', which is run in conjunction with Merseyside Probation Services and the Learning and Resource Centre in HM Prison Liverpool funded by the Paul Hamlyn Foundation.

THE SCHOOL OF LAW has two distinct areas of research. **Research in Law** includes areas such as: criminal law; legal history; corporate governance; banking and finance; global finance law; obligations; media law; comparative private/public law; EU law; international law; commercial law; sports law; German public law; Italian public law; medical ethics; bioethics; legal theory; human rights; terrorism; police powers; transnational crime; family law; law and religion. **Criminal Justice** covers two core themes: the organisation and delivery of criminal justice institutions and the broader social context of the social and cultural impact of criminal justice.

THE SCHOOL OF HUMANITIES AND SOCIAL SCIENCE conducts research in a range of areas including: Representation and Identity (particularly representations of gender) and Cultural Publics; through the **Research Centre for English Literature and Cultural History** it conducts research on 17th,

19th and 20th century British Literature and Cultural History; Women's Writing; Critical and Feminist Theory; History including British decolonisation, the British empire, Nazi Germany, labour history; Criminology including policy responses to young people in trouble; child welfare; penal systems; illegal and problematic drug use; corporate crime; night-time economies in the city; through the **Centre for Crime, Criminalisation and Social Exclusion (CCSE)** it conducts research and hosts widely attended events in the field of crime, criminalisation, social policy and social exclusion; children, young people and youth justice; policy responses to children in trouble; criminological theory; Sociology including: 'Race and political theory; Racism and relations between states and ethnicised and racialised minorities; Wales and postcoloniality; work-life balance; and women's health.

THE LIVERPOOL SCHOOL OF ART AND DESIGN carries out research in many areas of Art and Design History; Theory and Practice; Architecture; Popular Music Studies and Ethnomusicology.

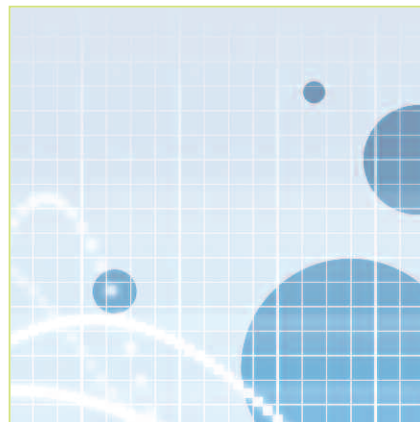
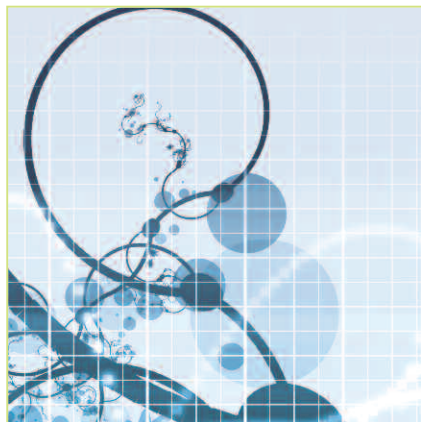
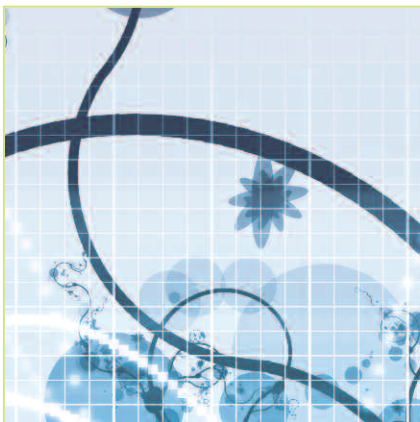
LIVERPOOL BUSINESS SCHOOL has a number of well-respected and widely referenced research groups in areas including: Entrepreneurship and Small Business; Public Services Management; Inter-Cultural Studies; Consumer Behaviour (especially senior consumers); Economics; Quality Management; Third Sector Management; Leadership; Learning and Knowledge Management.



Faculty of Education Community and Leisure

- 86% of students rated our teacher training as good or very good
- Nationally recognised expertise in PE, sport, coaching and dance
- Our dance staff are nationally and internationally recognised
- Over 100 years' experience of delivering teacher education programmes
- The UK's highest rated outdoor education programme with 100% student satisfaction ratings
- Courses exploring food and nutrition, events management, tourism and leisure

The Faculty of Education, Community and Leisure excels in a wide range of areas including teacher training, vocational education, education studies, tourism, events management, food, sport, dance, outdoor education and professional development.



The majority of teaching takes place at the IM Marsh Campus which offers excellent teaching facilities, including a fully equipped Learning Resource Centre, IT suites, cafe, sports facilities, drama and dance studios, science, design and technology laboratories.

Work-related learning, including work placements, is an integral part of all our courses. Such experience will not only give you great contacts out in the workplace, but will also enable you to try different career options before you graduate. Partnerships with schools ensure that all our teacher trainees receive varied professional training, enabling them to graduate as confident and competent teachers. All other programmes offered by the Faculty include opportunities for placements in industry and the community.

Our highly qualified and respected academic staff combine specialist knowledge and creative research with hands-on experience in their chosen fields. This combination of academic and professional expertise is reflected in the Faculty's programmes and helps ensure that our graduates are well equipped to meet the challenges of their chosen careers.

Research in the Faculty is central to its strategic aims of providing quality education, engaging in enterprise activities and contributing to the regeneration of the region.

Structured and directed by Faculty Research Directorate, research supervision is available in the following areas:

- Education
- Sport, Dance and Outdoor Education
- Nutrition and Health
- Leisure and Tourism

Research students are funded through projects mainly undertaken with key partners such as schools, education authorities, the food and leisure industry, community groups in sport and dance and other universities. Research activity is organised under the aegis of one of five research centres:

1. **Centre for Education Studies and Primary Research**
2. **Centre for Postgraduate and Professional Development**
3. **Centre for Sport, Dance and Outdoor Education**
4. **Centre for Tourism, Consumer and Food Studies**
5. **Centre for Secondary and Vocational Education.**

Many LJMU research projects are of national and international significance and are presented at conferences both at home and abroad. Research groups are also culturally diverse and reflect the cosmopolitan nature of projects undertaken in the Faculty.



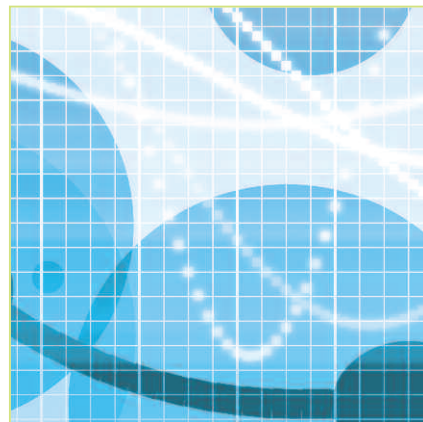
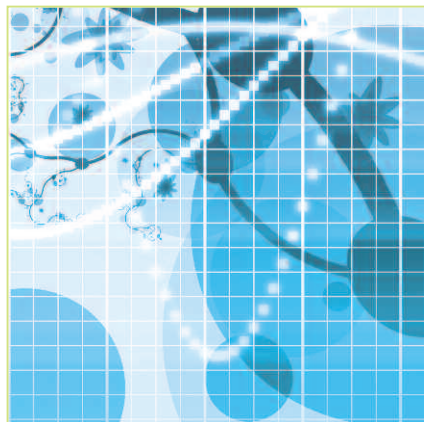
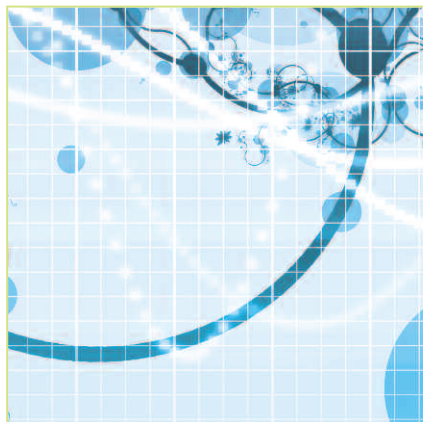
The Faculty and Health and Applied Social Sciences

- Clinical practice suites for midwifery, adult nursing and paramedic students developed closely with NHS Trusts and ambulance service
- Authentic hospital training environment on-campus with resuscitation machines, adult and child patient simulators
- Degrees dedicated to producing health practitioners who are fit for professional practice
- Outstanding student placement opportunities thanks to LJMU's links with local NHS Trusts, local authorities, charities and voluntary organisations
- Internationally acclaimed Centre for Public Health
- Postgraduate courses offered under Post Qualification Framework



The Faculty's influence extends far beyond Merseyside, thanks to our exciting research initiatives and teaching collaborations.

The Faculty has more than 3,000 full and part-time students together with 200 academic and support staff. Our excellent training facilities and courses of study ensure that students secure the right skills and experience to become effective practitioners in this challenging sector.



Midwifery, child, mental health, adult nursing and primary care programmes are designed to help you become competent, confident and skilled nurses and midwives capable of functioning professionally and independently. Multidisciplinary teaching encompasses patient care from conception to the grave and our much sought after graduates work in the public and private healthcare sectors both in the UK and internationally.

The Faculty's teaching environment is stimulating and challenging as well as caring and supportive to individual needs. Our courses will fully prepare you for your working life thanks to the combination of theory with hands-on experience gained via specialist training and placements.

The Faculty works in close collaboration with key stakeholders in health and social care, youth organisations and community groups in the public, private and voluntary sectors. Partners include strategic health authorities, NHS trusts, primary care trusts, workforce development confederations and local authorities.

The Faculty offers a range of undergraduate and postgraduate modules under the Post Qualification Framework (PQF) for professional health and social care staff. Modules can be studied on a stand-alone basis or as part of a post qualification award. The Framework has been set up by LJMU in conjunction with the Northwest Strategic Health Authority, Local NHS Trusts and PCTs, Local Authorities, Edge Hill University, University of Chester and University of Liverpool. It promotes the principle of Continuous Professional Development (CPD) which is linked to work-related learning through Personal Development Plans (PDPs) and maps directly onto the Knowledge and Skills Framework (KSF).

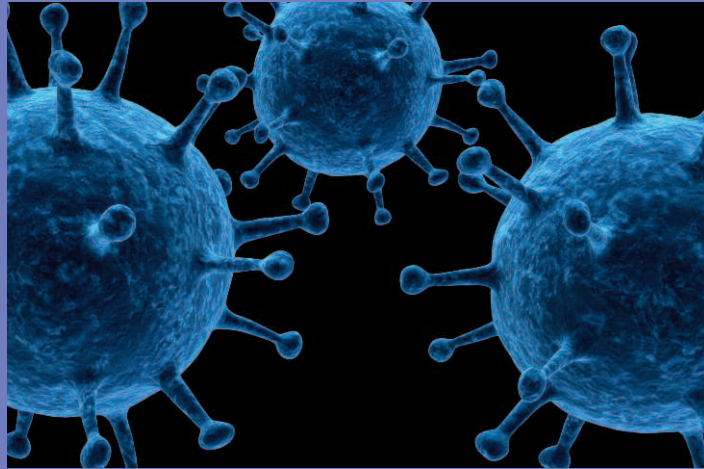
The Faculty has an active research programme, with supervision offered in the following areas:

- Alcohol Research
- Behavioural Epidemiology
- Environment, Sustainability and Capacity Building
- Financial Inclusion
- Poverty and Social Security

- Health and Social Care Informatics
- Health Promotion, Policy and Inequalities
- Healthcare for Ageing Populations
- Organisation and Delivery of Services
- Medical Sciences and Therapeutics
- Public Health Education and Training
- Sexual Health and Substance Use.

The Faculty is renowned nationally and internationally for aspects of its social science research, including work around the role of credit unions in promoting financial inclusion and the application of participatory action research as a research methodology.

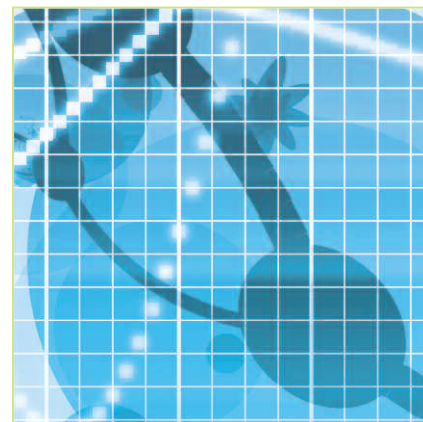
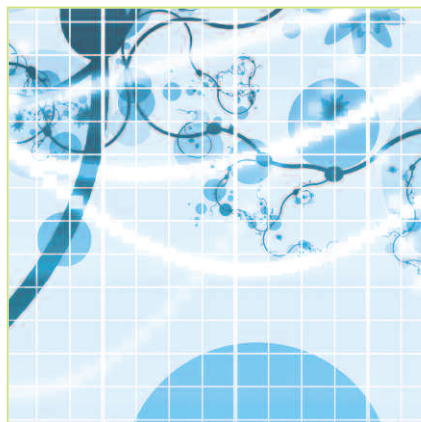
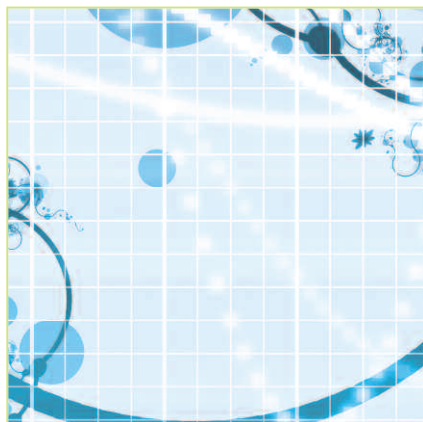
The Faculty is home to the internationally acclaimed Centre for Public Health which is at the forefront of applied research and, together with other research undertaken in the Faculty, plays a central role in the University's Institute for Health Research (IHR). The Centre has been designated as a World Health Organization Collaborating Centre for Violence Prevention. It is also home to the UK Focal Point for Violence and Injury prevention, supporting the Department of Health in the provision of information and intelligence for the European Monitoring Centre for Drugs and Drug Addiction, and contributing to the production of international guidance and a series of global fact sheets.



The Faculty of Science

- £6million investment in teaching and laboratory facilities
- Specialist facilities include an indoor 70-metre running track, Sports Acclimatisation Chamber, the Analytical and Environmental Chemistry Unit, Forensic Science Laboratory, DEXA scanner for measuring body fat, muscles and bone density, driving simulator, neuroscience and psychophysiology facilities, eating behaviour laboratory, chronobiology lab and access to the world's largest robotic telescope
- Award-winning Tom Reilly Building opened by Liverpool FC and England footballer Steven Gerrard
- World-leading research in astrophysics, anthropology, sport and exercise sciences and allied health sciences

LJMU's Faculty of Science is renowned for its innovative approach to teaching and research and comprises four academic Schools: the Astrophysics Research Institute, Pharmacy and Biomolecular Sciences, Natural Sciences and Psychology, and Sport and Exercise Sciences.



Our academics are not afraid to challenge conventional wisdom or approach topics in fresh and imaginative ways. This passion for scientific advancement means that our students are constantly working at the cutting edge of their discipline.

Field work and lab-based projects are central to all our programmes. Many final year students complete practical projects in research laboratories based at the University, in local hospitals or in industry.

Our graduates, both home and international, are highly sought after, and the diversity of career paths – from laboratory technician to zoologist, pharmacist to astronomer – reflect the range of opportunities open to today's scientists.

Many of our science degrees are recognised by professional bodies including the British Psychological Society and the General Pharmaceutical Council, which accredits our pharmacy programmes.

Whatever your needs, undergraduate, postgraduate or professional, the Faculty of Science has a range of courses that will provide you with a rewarding, vocationally relevant and high quality educational experience.

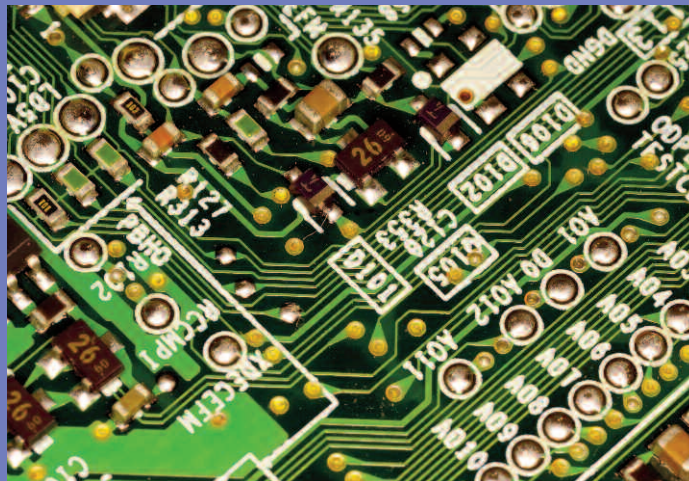
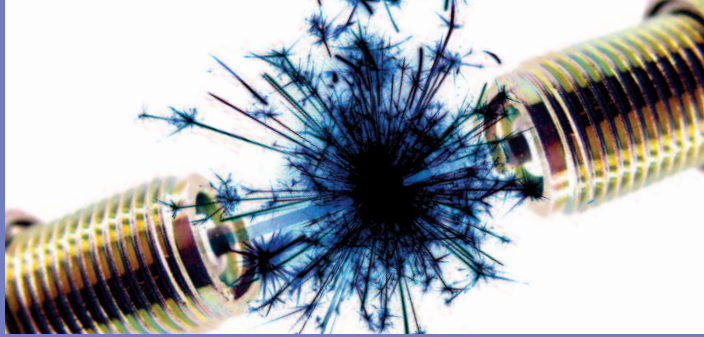
ASTROPHYSICS RESEARCH INSTITUTE research includes: Galaxy Evolution and Stellar Populations, Clusters of Galaxies, Active Galactic Nuclei, Gamma Ray Bursts, Novae, Star Forming Regions, e-Science and Telescope Instrumentation. Please go to www.astro.livjm.ac.uk/ for full details of all projects.

THE RESEARCH INSTITUTE FOR SPORT AND EXERCISE SCIENCES work includes: Biomechanics; Brain and Behaviour; Cardiovascular Science; Chronobiology; Muscle Metabolism and Nutrition; Physical Activity Exercise and Health; Psychology and Development; Science of Football.

SCHOOL OF NATURAL SCIENCES AND PSYCHOLOGY: The School encompasses a broad range of research interests. The Research Centre in Evolutionary Anthropology and Paleoecology conducts research into Mammalian Palaeobiology, Primate Behaviour and Forensic Anthropology. There is also research into Ecology, Evolution and the Environment including molecular phylogenetics, biogeography and aquatic ecology. Research in Psychology includes areas of Neuroscience and Applied Psychology, including Cognition and Emotion, Developmental and Educational Psychology, Health

Psychology, Substance Abuse and Affective Neuroscience (e.g. touch, olfaction, taste, mindfulness).

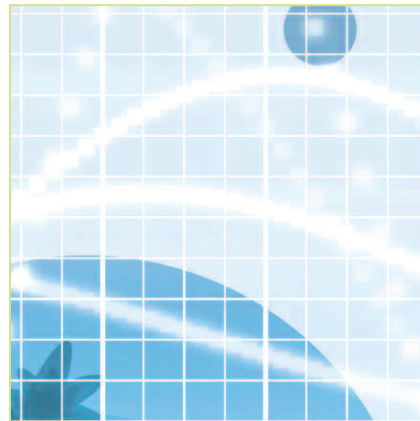
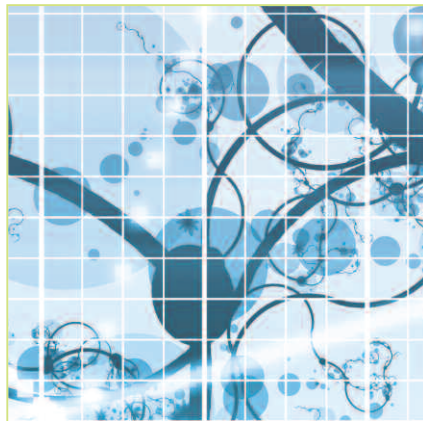
THE SCHOOL OF PHARMACY AND BIOMOLECULAR SCIENCES conducts research in a diverse range of areas, from social science in Pharmacy Practice; through laboratory work in Drug Delivery and Materials Science; Biochemistry; Cell Biology; Genetics and Forensic Science; Microbiology; Toxicology; Medicinal Chemistry (for which the School houses specialised equipment) to QSAR and Modelling, using sophisticated computer programmes.



Faculty of Technology and Environment:

- Excellent teaching laboratories and workshop facilities
- Computing facilities supporting industry standard software
- Supportive and well-qualified academic staff
- Internationally recognised research in engineering and maritime, computing and the built environment
- The UK's most advanced marine and simulation facilities

The Faculty of Technology and Environment has three Schools: the School of Built Environment, the School of Computing and Mathematical Sciences, and the School of Engineering, Technology and Maritime Operations and two Research Institutes: The General Engineering Research Institute and the European Institute for Urban Affairs.



All research in the Faculty is application-oriented and in many cases is either world-leading or internationally excellent. Students come to study here from many parts of the world including India, China, Indonesia and the Middle East. The Faculty collaborates in research with leading industrial companies and universities.

BUILT ENVIRONMENT (BUILT ENVIRONMENT AND SUSTAINABLE TECHNOLOGIES RESEARCH INSTITUTE)

Research covers: Environmental Technologies, Construction Management and Economics, Material Technology, Facilities Management and Property Planning and Radio Frequency and Microwave Technologies. Examples of project areas include: Biofuel production from waste; water and wastewater treatments; sensor technology for non-invasive measurement and building and structure health monitoring; wave and flood effects on buildings; materials engineering; Near Zero carbon building and environment reduction.

COMPUTING AND MATHEMATICAL SCIENCES

Research groups work in: Applied Artificial Intelligence; Distributed Multimedia Systems and Security; Information Systems; Mathematics Education and Neural Computation and Statistics. Fields covered include the development of advanced computer-based systems for scheduling, planning, training, and intelligent robot control, computer assisted organisational systems and support, and the effective use of computer technology in student learning.

ELECTRICAL AND ELECTRONIC ENGINEERING (ELECTRICAL AND ELECTRONIC RESEARCH CENTRE)

Research groups work in Electrical Machines, and Microelectronics. Research areas include: control and modelling of multiphase motors and generator systems, power generation for renewable energy sources; power converters. Work in microelectronics includes the development of new materials and devices for future microelectronic industry, quality assessment and device lifetime prediction, new characterisation techniques for semiconductor materials; device analysis for circuit optimisation.

GENERAL ENGINEERING (GENERAL ENGINEERING RESEARCH INSTITUTE)

Research groups in this area are: Coherent and Electro-Optics; Photonics; and Advanced Manufacturing Technology. Examples of the areas covered by each group include: (Coherent and Electro-Optics)

fringe pattern analysis, optics, precision measurement and computer vision; (Photonics) laser processing of surfaces; fabrication of meta-materials; laser micro-machining; (Advanced Manufacturing Technology and Tribology) high speed grinding and cutting; machining process modelling and development.

LOGISTICS, OFFSHORE AND MARINE (LOGISTICS OFFSHORE AND MARINE RESEARCH INSTITUTE)

Research covers marine and offshore technology, risk management; navigation; maritime ports and logistics. Examples include: Marine traffic planning to increase capacity in traffic intensive waters; Automation of container inspection to improve terminal efficiency; Environmentally sustainable logistics supply chains; Decision support tools for risk assessment in high risk industries (Nuclear, Offshore, Fire and Rescue, Oil and Gas); Courses for professional engineers in risk and safety, and asset management

MECHANICAL ENGINEERING

Areas covered include Materials Engineering for nuclear and medical applications (materials development, mechanics of materials, materials processing); Automotive Systems (new control strategies and techniques for automotive engines; fault diagnosis) and Process control for the chemical pharmaceutical and brewing industries and automotive fuel cells.

ENTRY REQUIREMENTS

LJMU welcomes applicants with a wide variety of educational qualifications from around world. In general for taught postgraduate programmes, UK and EU applicants will need to have a good undergraduate degree. If you want a place on a Doctoral programme you will also probably be expected to have a Masters degree. LJMU will also consider your prior work-experience when considering your application. For up-to-date details on all courses and entry requirements, please go to: www.ljmu.ac.uk/courses

All international applicants must also have an internationally recognised English language qualification, such as IELTS (International English Language Testing Service) or TOEFL (Test of English as a Foreign Language). Your English language qualification must have been certified within the last two years for verification purposes. LJMU will accept other UKBA-recognised English language tests providing you attain the appropriate equivalent IELTS score. To find out what qualifications are applicable in your country go to: www.ljmu.ac.uk/international

making your application

Frequently asked questions...

When should I make my application?

Most LJMU postgraduate programmes (taught and research) start either in September or January. If the start date of your chosen programme is different we will let you know in advance

While there are no specific closing dates for most taught programmes or research degrees, you are advised to apply as early as possible as places are limited. You also need to give yourself enough time to research possible sources of funding, and if you are an international applicant to obtain a visa and secure accommodation.

Where specific closing dates apply, this will be indicated in the course Fact File along with details of any further requirements, such as making your application via GTTR for Teaching, UCAS for Social Work and Law Cabs for Legal Practice programmes, etc.

It is really important that you make the most of all your skills and life experiences not just your formal qualifications when completing your application form.

What steps should I take when considering Research at LJMU?

Before you apply we recommend you:

- Contact the Faculty or department you are interested in to check that they have an appropriate supervisor in the area you wish to undertake research in.

- Ensure your qualifications meet our entry requirements, which can be found in the postgraduate Fact Files: www.ljmu.ac.uk/postgrad

- Ensure you have sufficient funds to finance your studies. Funding information can be found in LJMU's Research Support Office web pages: www.ljmu.ac.uk/RGSO

What offer will I receive?

A decision on your application will be made by the relevant Faculty Admission Hub. You will receive one of the following:

- A conditional offer – the offer of a place is subject to you meeting the conditions stated in the offer letter.
- An unconditional offer – you have met all the conditions required for entry.
- Unfortunately in some circumstances we may be unable to offer to you a place.
- The Admission Hub will keep in contact with you after you have made your application and you have received an offer. We will send you an Applicant Guide with key information about LJMU which will include information about accommodation and student support. Further correspondence will give you details on enrolment and induction.

Simply follow these 5 steps to apply for a postgraduate course at LJMU.

We recommend that you apply as early as possible.

- 1. Click the online application form at www.ljmu.ac.uk/pgapplication**
- 2. Choose your course**
- 3. Choose when you want to start**
- 4. Complete the sections**
- 5. Add your personal statement and then click send**

Please note that certain types of applications must be submitted differently:

MA Social Work applications are made through UCAS: www.ucas.com

PGCE applications are made through the Graduate Teacher Training Registry: www.gtrr.ac.uk

Applications for the **Legal Practice Course** are made through the Central Applications Board: www.lawcabs.ac.uk

Postgraduate Fairs at a City near you...

LJMU attends various Postgraduate and Careers Fairs across the UK, EU and internationally. Visit www.ljmu.ac.uk to find out more.