



international guide

2012/2013





... if you want to
enough you can
achieve anything



Shortlisted
for the most
improved
student
experience

(Times Higher Education
Awards 2010)

Shortlisted for
Outstanding
Library Team

(Times Higher
Leadership and
Management
Awards 2011)



**Queen's
Anniversary
Prize** for excellence
in astronomy and
public engagement
in science



2011
National Union of
Students (NUS)
Award winner



contents

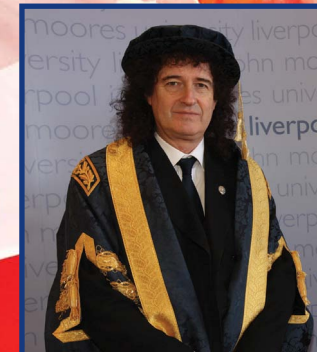
15 facts about LJMU	10
World of Work programme	12
Teaching and learning	18
Work-related learning	24
Graduate skills	26
Postgraduate opportunities	28
Research degrees	30
Degree preparation courses	32
Accommodation	40
Sporting opportunities	44
About Liverpool	46
Students' Union	54
Learning resource centre	62
Student support	66
Career matters	72
Entry requirements	77
Academic faculties	78
Fees and funding	100
How to apply	104
Location maps	108

welcome to Liverpool John Moores University

Ranked in the top 400 universities world-wide, LJMU offers you an exceptional international student experience, founded on high quality teaching, ground-breaking research and extensive links with employers and business leaders. That's why we are confident that our degrees are not only intellectually stimulating but will also equip you with the skills and experience required for professional success.

It's a big decision to study abroad and we know how difficult it can be to decide where and what you want to study in the United Kingdom. This guide will give you lots of information about Liverpool John Moores University (LJMU) and demonstrate why we believe that we can offer you a life-changing and career-boosting international student experience. Throughout your application we will take great care to make sure you have all the information and support you need to plan for your studies at LJMU. This includes advice on immigration procedures, travel, accommodation or any other information you might need.

More information is also available on our website: www.ljmu.ac.uk



a rich history

Established in 1825, LJMU is now the 10th largest university in the UK with nearly 26,000 students in Liverpool and overseas. Our staff and students come from over 100 countries world-wide, making for a vibrant and welcoming international community.

we will rock you

Our ethos is summed up in three words, Dream, Plan, Achieve. No-one embodies this more than our Chancellor and rock legend, Dr Brian May.

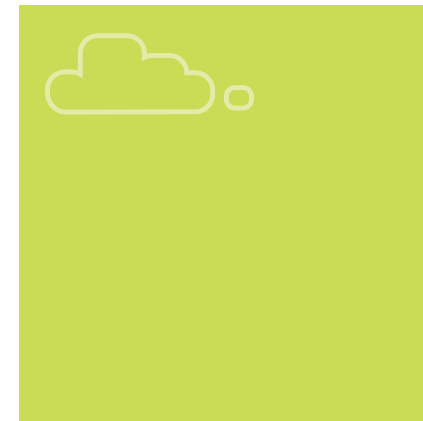
While gaining global recognition as a musician, entrepreneur and supporter of the performing arts, Brian May never lost sight of his dream, his passion for astronomy and science. Thirty years after starting his PhD, he achieved his doctorate, personifying the power of lifelong learning.

dream



Coming to LJMU will open your eyes to new opportunities and new experiences, broadening your horizons and making you realise that if you work hard enough anything is possible.

dream



“

LJMU was the perfect choice for me because my degree is recognised in Canada and it is very well ranked academically. I am passionate about pharmacy and each day I feel I am becoming more and more knowledgeable and closer to achieving my dream of owning my own pharmacy practice.

Undergraduate Pharmacy student Stephanie Morson

”



things you should
know about **LJMU**

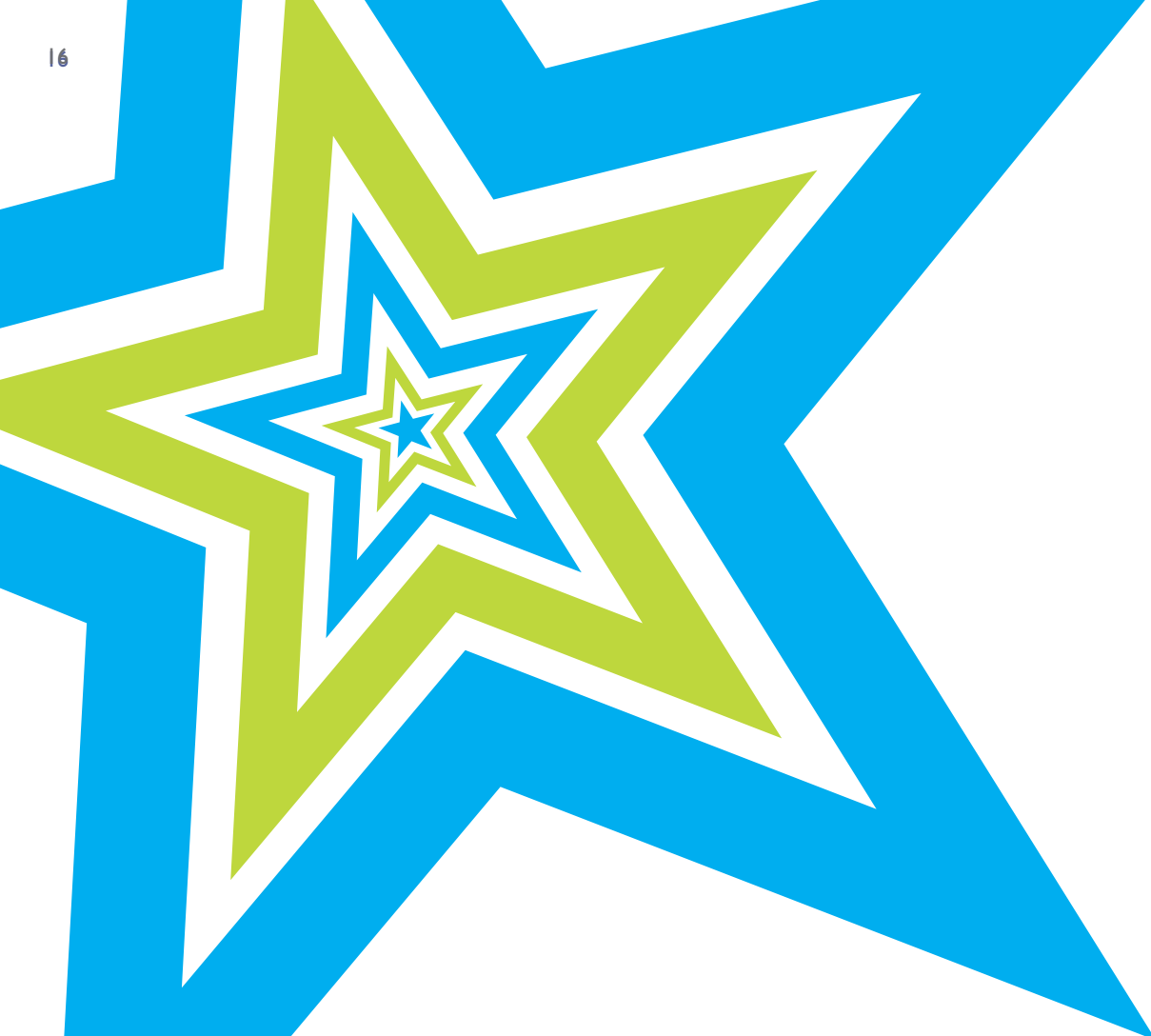
1. LJMU offers you a globally unique model of higher education – World of Work[®]-developed in partnership with employers like the NHS, Marks and Spencer and Sony **2.** UK leader in entrepreneurship training and support **3.** £160 million invested in award-winning new buildings and improving student facilities in the last 10 years **4.** Awarded our 5th university Oscar (National Teaching Fellowship) for innovative teaching in 2011 **5.** Engineering students in our Formula Student team test drive their racing car designs on the Silverstone Circuit **6.** Over 75% of all LJMU research is classed as internationally important and this informs all areas of the curriculum **7.** We launched the UK's first sports science degree and our School of Sport and Exercise Sciences is now ranked as 'amongst the very best' in the world **8.** Our Pharmacy School is one of the oldest in the UK and renowned for producing 'industry ready' graduates **9.** Our Centre for Public Health has World Health Organisation (WHO) status **10.** We pioneered computer games degrees and have outstanding links with games developers, academics and industry professionals around the world **11.** We have over 100 years expertise in delivering professional courses for the maritime industry **12.** Our General Engineering Research Institute carries out world-class research **13.** Our law students routinely make the finals – and win – national moot, negotiation and mediation competitions, beating university teams from across the UK **14.** Winners of the Business Leader of Tomorrow KTP award three times in a row **15.** Our fashion and textile students have been exhibiting their work on the catwalk since 1947

zoologist
 barrister
 paramedic
 film maker
 manager
 civil engineer
 sports scientist
 teacher
 coach
 architect
 midwife
 accountant
 engineer
 designer
 nurse
 criminologist
 lecturer

nearly 90% of our students are in work or further study six months after they graduate

Every university offers students careers advice. Only LJMU has integrated its expert employability support into all of its undergraduate degrees. That's why our graduates are increasingly sought after by employers in all sectors of the economy.

Thanks to the growing success and recognition of our World of Work Programme, both in the UK and internationally, your prospects will be even better by the time you collect your LJMU degree.



stand out
from the crowd

you're hired

Thanks to our World of Work Programme we can help you realise your ambitions, using all of the University's expertise and resources to help you achieve more than you ever thought possible.

LJMU offers you a university experience that will help you scale the professional career ladder. Thanks to our extensive links with managers, senior partners and executives in all business sectors and professions you can be confident that your undergraduate degree will deliver the skills and professional development you need to impress any future boss.

Here are just some of the employers we work with:



helping postgraduates succeed

It's not just undergraduate students who benefit from our **World of Work** Programme; increasingly postgraduate students and researchers are engaging with it too, realising that they need to demonstrate more than just their academic credentials in order to **succeed** professionally.

LJMU's Postgraduate Employability Programme (**PEP**) offers more than just careers advice for Researchers and Early Career Researchers. The programme is designed to help you gain insights on how to persuasively present yourself to employers, develop effective presentation and **career management skills** and explore career alternatives.

“

The interview with a graduate employer gives you ‘first-hand’ experience of what to expect in the ‘real world’ job market. This experience has turned me into a full package for any employer.

**Onyekachi
Kanu, MSc in
Public Health
(International
Health Development)**

”

completed the World of Work Skills Certificate Programme alongside his masters degree.



outstanding teaching and learning

LJMU offers you the choice of over **300 undergraduate degrees**, taught **postgraduate courses** and **research opportunities** in a range of disciplines, spanning the arts, humanities, health, education, engineering, technology and science.

LJMU offers three main types of qualification:

- **First degree** – undergraduate qualification, such as a BA (Bachelor of Arts), BSc (Bachelor of Science), BEng (Bachelor of Engineering) or MEng (undergraduate Masters of Engineering).
- **Taught postgraduate qualification** – such as a Masters degree, Postgraduate Diploma or Postgraduate Certificate.
- **Research degree** – such as a Master of Philosophy (MPhil) or a Doctoral Award, such as a Doctor of Philosophy (PhD).

For more details on all our courses, go to www.ljmu.ac.uk/courses



“

In India you study under your tutors, at LJMU you study with your tutors. I feel really supported and being able to chat to your tutors like friends is brilliant.

”

**Vinod Kumar,
BSc (Hons)
Nursing Studies**



imagine yourself five, ten,
15 years from now... **what do
you think you will be doing?**

Working for a Formula 1 racing team?
Running your own architectural practice?
Conducting scientific research? Managing a
children's ward in a hospital? Launching your
own fashion label? Our graduates have been
able to do all this and much more thanks to
the LJMU student experience.

All of LJMU's degrees come with graduate skills development and work related learning built in, not as an optional extra. The World of Work Programme is also integrated into the curriculum helping you further develop as a professional.

So regardless of whether you have ambitions to be a scientist, teacher, criminologist, lawyer, nurse or engineer; we are confident that we can help you achieve your dreams for a successful future.



learn from the experts

All LJMU degrees are of the highest academic standard and are taught by academics actively involved in research or consultancy projects with business and industry. It's this combination of academic expertise and 'real world' experience that helps keep our degrees up-to-date and secure accreditation by key professional bodies.

- Our 24 credit, yearlong modules are helping students really engage with their subjects
- Links with a wide range of industry partners ensure that our courses have real currency with your potential employers
- Research and innovative practice is incorporated into the curriculum
- We give you up-to-date insights into the latest thinking in your field
- Our tutors have invaluable experience of their industry
- Guest lectures from industry leaders



those who can, do!

All our undergraduate students complete some form of work-related learning, giving you insights on the inner workings of modern businesses, sharpening your analytical skills and helping you develop key communication and interpersonal skills.



more than just an academic qualification

Whether you are an undergraduate studying graphic design or pharmacy, criminology or business studies, you will have the opportunity to become expert in up to eight transferable graduate skills identified with employers as applicable to a wide variety of professions and careers.

your
graduate
skills ▶

analysing
and solving
problems

team working and
interpersonal skills

verbal
communication

written
communication

personal
planning and
organising

initiative

numerical
reasoning

information
literacy and
ICT skills



postgraduate opportunities

LJMU offers an extensive range of postgraduate taught programmes and research opportunities in each of our five faculties (Arts, Professional and Social Studies, Science, Technology and Environment, Education, Community and Leisure and Health and Applied Social Sciences). For details go to www.ljmu.ac.uk/courses

Postgraduate certificates and diplomas may enable you to secure a professional qualification needed for a particular career or can act as the initial stages of a taught Masters award.

The **Postgraduate Certificate in Education** offers you a route into teaching if you already have a degree and mainly focuses on developing your teaching skills. LJMU also offers some PGCE subject conversion courses.

Our **taught Masters (MA, MSc, PgCert, PgDip, MRes and PGCE)** build upon your undergraduate knowledge and skills. These can be studied 12 months full time. Many courses enable you to select specialist option modules based on your own interests and all will require you to complete a dissertation, an extensive piece of work based on in-depth research of a particular topic. Some courses are designed for students with little or no academic experience in the subject area.

The majority of the **Master of Research (MRes)** is focused around your individual research project work making this the ideal route for people wishing to pursue a research career. You will be assigned a dedicated academic mentor, who will become your Director of Studies should you progress to a PhD programme

In order to be accepted onto an **MPhil research programme**, you will have to demonstrate competence in conducting an independent enquiry as well as using appropriate research methods and techniques. This award can be completed between 1 and 4 years depending on whether you are a full or part-time student.

Doctoral or PhD programmes require you to show mastery of a specialist field and to have made an original personal contribution to the understanding of a problem, to the advancement of knowledge or to the generation of new ideas. These awards normally take between 2 and 6 years to complete depending on your mode of study.

research degrees with real impact

LJMU is one of the top performing new universities in the UK for Architecture and Built Environment, Electrical and Electronic Engineering, General Engineering, Physics and Sports-Related Studies. So if you are interested in carrying out your own research, you should think seriously about LJMU's MPhil and PhD programmes.

The quality of our research is reflected in the University being awarded the UK's highest Research Excellence Framework (REF) rating for our Physics submission.

over 75% of all LJMU research is classed as internationally important

we designed and built the world's largest robotic telescopes

our degrees combine academic expertise with 'real world' experience

“

Consider doctoral research at LJMU. The academics have so many international links which led to great opportunities for networking, resources and research. They are involved in leading world-class research and I would highly recommend working with them.

Diego Capozzi,

from Naples, Italy, was awarded a PhD in Astrophysics.

”



degree preparation courses

LJMU also offers international students the option of completing pre-undergraduate and pre-postgraduate programmes at the University's International Study Centre.

english language preparation course

Depending on your level of English, you can study one or two terms of English Language Preparation before you start the Foundation Year. These intensive courses run three times a year, starting in January, June and September (subject to student numbers). These courses will improve your language skills to the required level for our International Foundation Year pathways at LJMU.

international foundation year

Our **International Foundation Year** programmes are targeted at international students who have left high school, but who do not yet have the qualifications to go straight into a UK undergraduate degree. Students who successfully complete the International Foundation Year can progress to year 1 of a degree course.

The year-long courses include an introduction to specific academic subjects, study skills and English Language training. Please note: If your English Language level is under IELTS 4.5 (with 4.5 in all sub-skills) you will need to complete the intensive English Language Preparation course before starting the Foundation Year.

Two International Foundation Year programmes are available at LJMU, starting in September and January each year:

- **Business, Law and Social Studies**, providing access onto many LJMU degrees such as Accounting, Business Management, Finance, Economics, Human Resource Management, Law, Marketing, and Politics.
- **Engineering, Computing and Life Sciences**, leading to LJMU degrees in Automotive Engineering, Biochemistry, Biological Sciences, Biomedical Sciences, Civil Engineering, Computer Science, Electrical and Electronic Engineering, Environmental Sciences, Mathematics, Mechanical Engineering, Pharmacy, Physics with Astronomy, Planning and Property Development, Psychology, Sociology, and Sport Science.

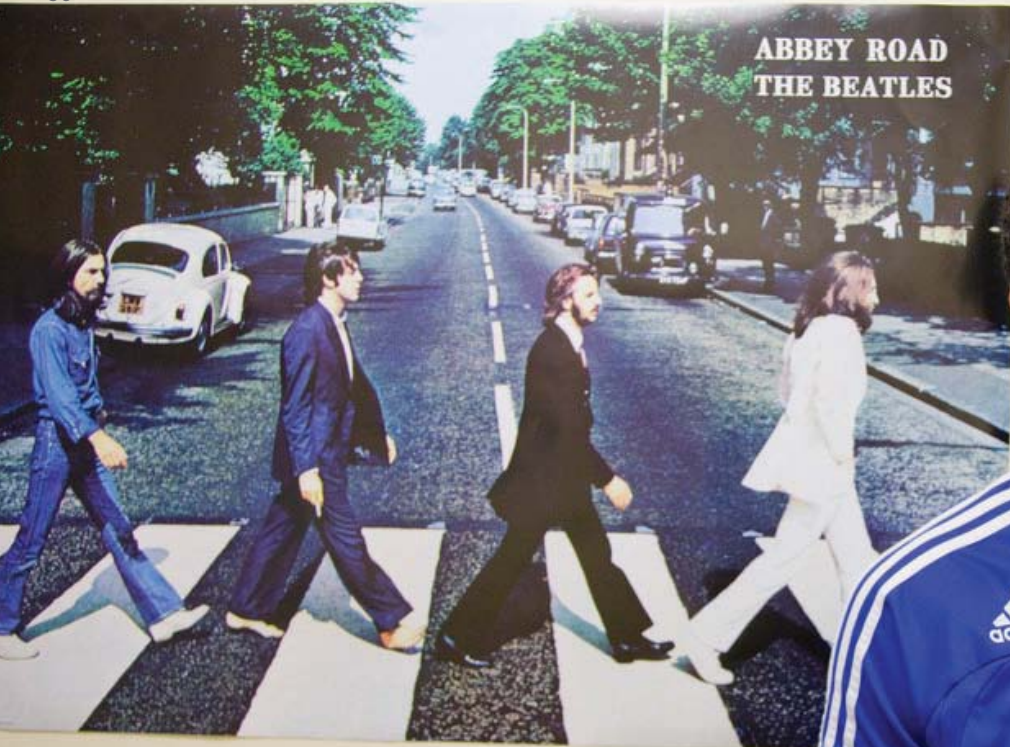
pre-masters/ pre-MBA programme

Our **International Pre-Masters/Pre-MBA** is aimed at international students preparing for Masters or MBA degree study. The programme combines academic subjects, research skills and English use in academic environments and is designed to help postgraduate students succeed in a UK university environment.

The 14 week Pre-Masters/Pre-MBA course is for students with IELTS level of 5.5 or equivalent. This fast-track programme will develop your English skills up to IELTS level 7 while also introducing theories and business research methods. You can start the Pre-Masters/Pre-MBA course in either May or September each year.

LJMU's degree preparation courses are managed and taught by Study Group, a world leader in education and training for international students.

For more details on LJMU's International Study Centre, go to www.ljmu.ac.uk/isc

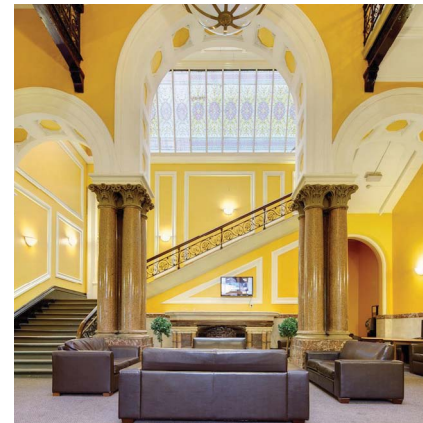
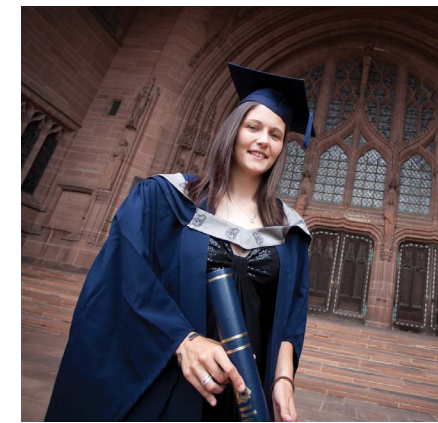


ABBEY ROAD
THE BEATLES



“ LJMU’s International Study Centre is helping me with different things such as reading, grammar, writing and speaking, which will be really important to me in the future. ”

Originally from Angola, International Foundation Year in Business and Management student Keoma Pimenta is now enrolled on LJMU’s BSc (Hons) in Business and Management.



a university
where you can...

...work, rest
and play





building a **better** university for you



Over the last 10 years LJMU has invested close to £160 million across the University, developing award-winning new buildings and improving existing facilities for all our students. Work is still ongoing and the latest edition to the 'family', the £37 million Redmonds Building, will be completed in 2012. The building is named after LJMU Honorary Fellows Phil and Alexis Redmond, founders of Mersey Television, which produced programmes such as Brookside and Hollyoaks. Appropriately the building will provide industry-standard film and broadcasting studios as well as general teaching space and professional training facilities.

making Liverpool your home

LJMU works hard to make sure that all our international students are made welcome, receive help to settle in and make friends from the minute they arrive. As soon as you accept an offer and throughout the duration of your studies, we will be there offering a range of services to make your time at LJMU enjoyable and worry-free.

Adapting to life in a new country can be both exciting and challenging. Finding somewhere to live where you feel comfortable will help you settle in quickly. That's why LJMU guarantees all new international undergraduate students a place in University-approved student accommodation.

We understand that postgraduate students may wish to live in quieter study and living environments and that's why we have designated accommodation specifically for this group of students.

Liverpool Student Homes or LSH is the official student housing agency set up by LJMU, the University of Liverpool and Hope University. If you do not want to live in student accommodation, LSH will be able to advise you on the type and availability of private houses and flats which are available to rent within the city and which are owned by registered landlords.

Further details on all matters relating to accommodation can be found on the LJMU website: www.ljmu.ac.uk/accommodation



a **place**
of your
own



- Our modern student accommodation is within easy walking distance of most of our teaching buildings.
- The average cost for a single bedroom with a private bathroom within a shared flat is £97 per week for 2011/2012.
- This means that accommodation at LJMU is among the cheapest for large city universities within the UK.
- All students from outside the UK are required to pay for their accommodation in full and in advance of their arrival in Liverpool. Please contact the LJMU Accommodation Office before arriving in the UK.

From football to cheerleading, trampolining to the Islamic Society, there are a whole host of Clubs and Societies to join at the Liverpool Students' Union, and if you can't find the one you are looking for you can always set a new group up yourself.



“

Without the clubs and societies there would be fewer opportunities to try random things for the first time and meet like-minded outgoing students – all of which make the whole Uni experience much more entertaining.

”

Ian Jones,
Snowboarding Club,
Liverpool
Students' Union



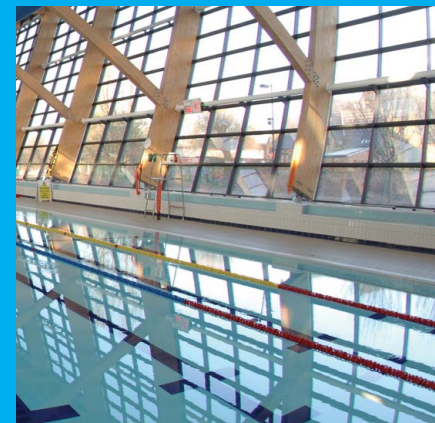
sport for all

LJMU offers sporting opportunities for every student regardless of your ability or background. You'll be eligible for free off-peak membership to Lifestyles Fitness Centres across Liverpool, with access to facilities such as an Olympic-sized swimming pool, tennis centre, athletics centre, squash and badminton courts and weights rooms.

Whether you are an elite athlete competing at the highest level of competition, or if you just want to get fit and have fun, you should be able to find an activity or sport that suits you at LJMU. LJMU runs a number of British University and College Sport (BUCS) teams in a variety of sports, such as badminton, boxing and cricket as well as football, hockey, netball and rugby union. The University's team have proved to be very successful, competing in the national finals and at the World University Championships.

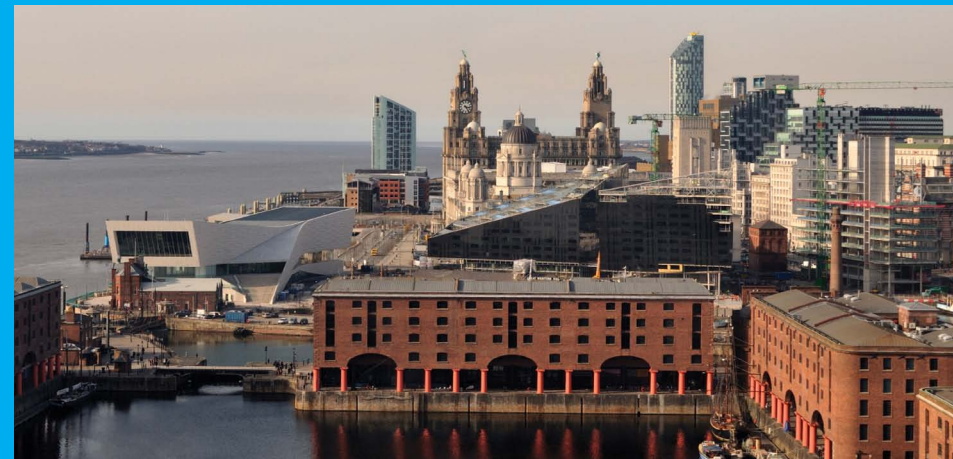
Our Sports Scholarship scheme builds upon the University's elite status as a centre for excellence sport and exercise sciences.

Lifestyles
Fitness Centres



the world in one city...

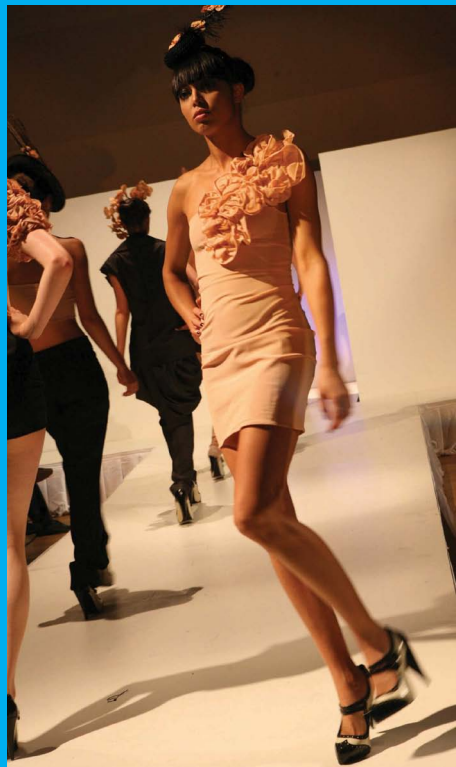
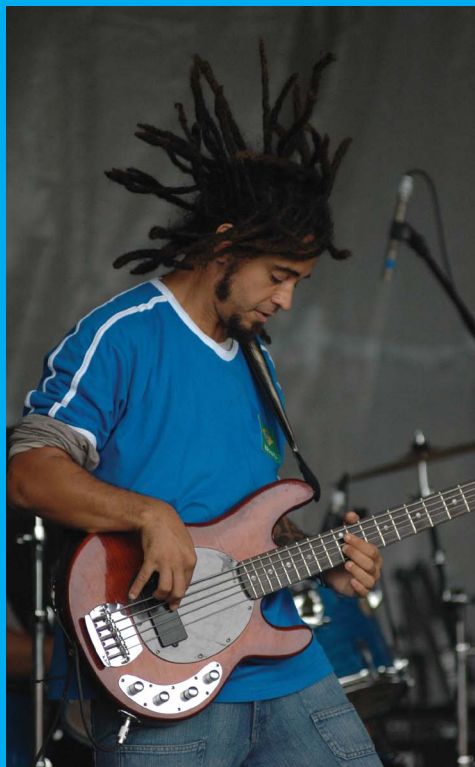
Liverpool is a multi-racial and multi-cultural city supporting a diverse range of religions and communities. LJMU too is a melting pot of people, ideas, and cultures. Our staff and students come from over 100 countries around the world, each bringing their own little slice of home to Liverpool and creating a truly unique and supportive community.



Culture vulture, shopaholic, music lover or the ultimate sports fan – whatever you're into, Liverpool has it all...

...and when you want to escape the hustle and bustle, you'll be spoilt for choice with beautiful parks and gorgeous sandy beaches not to mention Snowdonia and the Lake District within easy reach.

...the world in one university



Liverpool may be the UK's fourth largest city but it is also compact and easy to get around. It offers you all the excitement of a major city but also the friendliness and sense of community of a much smaller town.

From its flair for fashion, art and culture, to its love of sport, music and comedy, Liverpool is a city unmatched by any other in the UK. With restaurants and cafes catering for every taste and budget, from traditional pubs to boutique hotels, award-winning theatres, art house cinemas and comedy clubs, Liverpool has everything you could possibly want in terms of entertainment and leisure services.

Liverpool loves football but the city also hosts world-class rugby league, horse racing, tennis, sailing and golf competitions. Music too is part of the fabric of Merseyside but don't worry you don't have to be a fan of the Beatles as Liverpool's love of music embraces much more than just the Fab Four, through events such as Africa Oyé and the Mathew Street Festival.

Liverpool has loads of great bars and clubs. So whether you're looking for a loud and lively night out, want to watch the footie with your mates or even take your mum and dad out for a drink, with over 300 venues to choose from you'll be spoilt for choice.

we think Liverpool is unlike any other city but don't just take our word for it... here are just some of the accolades Liverpool has collected over the years

the city's new retail district, **Liverpool ONE**, was named **UK Shopping Location of the Year in 2010**

(RETAIL WEEK)

the city was **European Capital of Culture in 2008**

Liverpool is a UNESCO World Heritage Site,

like the Great Wall of China and the Pyramids of Giza in Egypt

Liverpool Biennial is the **largest contemporary visual arts event** in the UK, and one of the world's best attended arts festivals

the **Guinness Book of Records** named Liverpool the

World Capital of Pop

Liverpool's Seel Street was nominated in the **'Hippest Street'** and Bold Street in **'Best Shopping Street'** categories in the 2011 Google Maps and Street View Awards

the city has more galleries and museums, including **Tate Liverpool** and the **new Museum of Liverpool Life**, than any other city outside London and boasts outstanding architecture around virtually every corner

Liverpool John Lennon Airport boasts excellent links with the rest of the UK and Europe and is one of the UK's top 10 busiest airports

Liverpool is famed for its music festivals - **Africa Oyé** is the largest free African music festival in the UK, while **The Mathew Street Festival** is the largest annual free music festival in Europe



“

I've had a fantastic time here. Academics have an outstanding reputation for their work and are known for being at the forefront of their field. I would recommend studying here.

Valerio Riberio

”

Originally from Mozambique, Valerio recently completed a PhD in Astrophysics at LJMU. He is now living in South Africa and working on the first phase of the Square Kilometre Array project - the world's largest radio telescope.

Liverpool... the world in one city

Liverpool's claim to be 'the world in one city' is reflected in the diversity of its well established international communities. The city's Chinatown is the oldest in Europe. Pakistani, Indian, Bangladeshi, Somalian and Nigerian communities are just a few of the other nationalities that are well established in the city. The places of religious worship across the city reflect this diversity, so whatever your faith there will be somewhere for you to worship in Liverpool.

Liverpool and the UK as a whole is a tolerant society respectful of the rights of minority groups. This belief is supported by law and LJMU works with the police, community groups and other agencies to promote equality of opportunity and eliminate discrimination both on campus and across the city.



your students' union

The Liverpool Students' Union plays a major role in making LJMU's international students feel part of the University community.

LiverpoolSU recognises that while international students experience many of the same issues that UK students do, they also have different needs, whether due to language or cultural differences or the challenges of living and studying in a new country. That's why the Union offers a range of dedicated services for international students.

- Annually elected International Student Delegate
- Networking events will enable you to meet other international students, share experiences and find out more about the support and services available both in the Union and in the University.
- The International Students' Society organises a wide range of social activities, including a regular Friday coffee morning.
- The 'Give it a Go' calendar of activities, trips and events offers a host of opportunities for you to try something different, explore the UK safely and cheaply and meet other students. Recent visits have included Snowdonia, the Lake District, York, Edinburgh, London, Dublin and Amsterdam.



plan

University is your time to shine and LJMU will work with you to help you achieve your dreams for the future. We are a university rich in resources, facilities, expertise and support that you won't find anywhere else or at any other time of your life. So make sure you take advantage of every opportunity that comes your way.



plan



hands-on experience

LJMU's facilities are designed to replicate 'world of work' environments so that you can gain the key skills and experience relevant to your chosen career. These include science, technology and engineering laboratories, broadcast quality TV and radio studios, a forensic scene-of-crime lab,

a 360° ship simulator, theatre and rehearsal facilities, a mock courtroom, clinical practice suites, art galleries and much more.

See LJMU facilities and more on LJMUTV on YouTube: www.youtube.com/LJMUTV



buildings and facilities to inspire and motivate everyone who uses them





our Learning Resource Centres are open and ready when you are

From PCs to periodicals and coursework to coffee breaks, the University's Learning Resource Centres provide access to all the resources and student support services you'll need to succeed in your degree and have a great student experience.

LJMU has three Learning Resource Centres, with one based in each of the City, Mount Pleasant and IM Marsh campuses. This means that whatever and wherever you are studying at the University you are never far from one of these Centres and with 24/7 opening hours during semesters, you can pop in anytime, day or night, at a time that's most convenient for you.

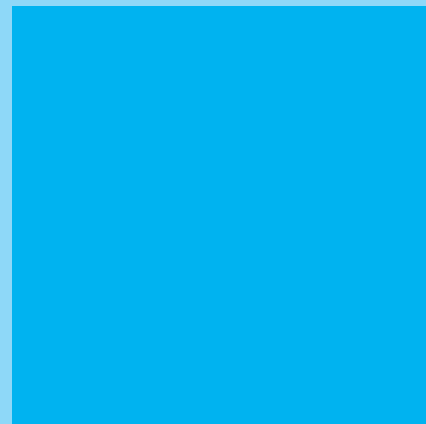
get into the zone

Our Learning Resource Centres are zoned to give you different spaces and facilities where you can meet friends for a coffee, work in groups or study quietly on your own.

The Centres combine the best aspects of traditional libraries with everything you'd expect from a modern university: there's Wi-Fi access throughout, loads of computers, books, periodicals and journals as well as online resources.

Sofas, newspapers and on-screen information systems also help to create spaces where you can relax after lectures or studying.

All of the Centres are fully accessible to all users, offering wheelchair access, hearing loop facilities, height adjustable workstations, and specialised software to support visual or specific learning needs.



In the Student Zones you can get advice on everything from:
 teaching and exam timetables **networked PCs and applications** Blackboard, LJMU's virtual learning environment
submitting coursework and assignments
 paying fees and money matters **LJMU's employability initiatives** your health and wellbeing **library resources**

more than just books

Every subject, every topic, every interest is covered in our libraries – in formats ranging from DVD and CD, to journals, satellite TV programmes, magazines, and of course books. Increasingly, academic publishing and comment takes place online and LJMU's electronic library gives you access to 22,000 electronic journals, newspapers, conference proceedings, maps, legal documents and much more.

- over 820,000 items including 650,000 printed monographs, 120,000 e-books, 50,000+ periodicals
- international, national and local newspapers
- 2,000 study places
- helpdesks on all sites
- induction sessions for new students
- e-books mean you have 24 hours off-campus access to many learning materials

24/7
access during
semesters

Settling into your new home

Leaving your own country to study in the UK is a big step, but rest assured you will receive a warm welcome when you arrive in Liverpool plus plenty of support from LJMU to help you settle into your new home.

Liverpool is a safe, multi-cultural city, with low levels of violence and street crime. Our Student Advice Team can give you practical advice on personal safety and other aspects of living in the UK.

To ensure the smoothest arrival at Liverpool for new international students, LJMU also runs a free 'Meet and Greet' service from Liverpool John Lennon and Manchester airports before the start of each academic year. For details, please email: international@ljmu.ac.uk

To help **non-native English-speaking students** achieve their full academic potential LJMU offers free academic English courses during semesters.

These 'Help' classes are available to all international students and cover listening, speaking and pronunciation, as well as grammar and writing skills.

For further details go to: www.ljmu.ac.uk/studysupport

The Liverpool Students' Union International Society organises events and activities that will help you settle into university life and make new friends



“

LJMU's supportive academic and technical staff are always available to help and my Learning Resource Centre is full of excellent academic resources.

Melissa Teh, BSc (Hons) Human Psychology

Originally from Malaysia, Melissa completed her undergraduate degree as part of LJMU's Summer Semester programme. She enjoyed the experience so much that she enrolled on the MSc Occupational Psychology, which is recognised by the British Psychological Society. After she graduates, Melissa hopes to work in a recruitment or training and development agency.

”



Support whenever you need it...

Our **International Student Welfare Adviser** is dedicated to helping you settle into life at Liverpool and the University. They are experienced in dealing with the kinds of issues that international students may face when moving to a new country, such as visa renewal, accommodation, financial concerns and the natural challenges emerging from developing a new 'home away from home'.

We also offer:

- Personal development planning within every course
- Study skills courses and workshops on IT skills, academic writing, numeracy and maths support, revision skills, and referencing
- A free, confidential counselling service
- Dedicated and professional support for students with disabilities
- A Spiritual Support team providing confidential pastoral care and support to students of all beliefs and backgrounds
- Multi-faith prayer rooms for personal prayer, reflection and contemplation, including dedicated space for Muslim prayers

achieve

Most employers are looking for candidates with more than just a good degree. That's why all of LJMU's undergraduate and postgraduate degrees are designed to make it as easy as possible for you to gain the skills and experience you'll need to climb the professional career ladder after you graduate.



achieve



“

Completing the **World of Work** certificate really gave me the confidence to believe in my abilities and perform well in interviews. I was able to secure a job even before I graduated.

Regina Danku, BSc (Hons) Maritime Business and Management

”

career matters

Whatever your professional ambitions, LJMU's employability advisers and work-based learning units can help you find work-related learning that will enhance your CV and add value to your university experience.

- high-quality careers advice and guidance
- skills support and employability staff
- work-based learning units
- dedicated business advisers for student and graduate entrepreneurs and freelancers



over **1,000 organisations** have signed up to LJMU's **vacancy website**, a one-stop-shop for students looking for part-time work, graduate jobs, work placements and much more

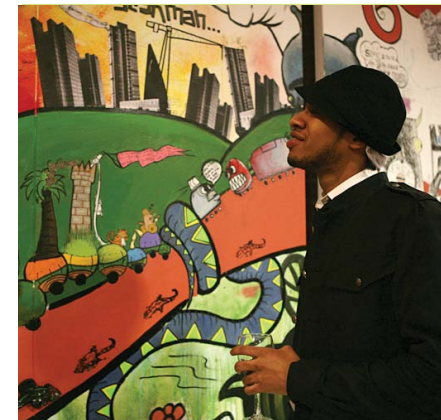
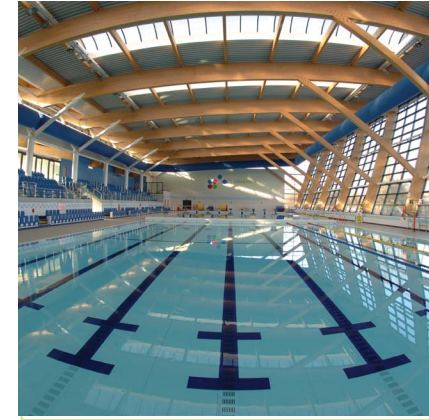
the centre for entrepreneurship

Whether you want to develop a new business idea, work as a freelancer, launch a product or service or grow an existing business, LJMU's Centre for Entrepreneurship can help.

LJMU first launched its Student Enterprise programme in 2003 and it's been so successful that we've established a dedicated Centre for Entrepreneurship to support students and graduates who want to set up their own businesses.

Follow the Student Enterprise Team on Twitter:
[@LJMU_Enterprise](https://twitter.com/LJMU_Enterprise)

- Supporting graduate start-up companies
- Business advice as part of the curriculum
- Extensive network of entrepreneurs and business mentors
- Hotdesking at our dedicated Hatchery Space
- Annual business idea competition



more than just careers advice

graduate development centre

This centre hosts regular fairs, master classes and networking events where you can meet and network with employers. The Ready for Work Programme covers areas such as CV writing, application and selection centre techniques, psychometric testing and filmed mock interviews. In addition, the University's career and employability advisers, trainers and business advisers provide both group and one-to-one support.

working while you are a student

Providing your course is full-time and you are staying in the UK for longer than six months, you are allowed to work up to a maximum of 20 hours a week during term-time and full-time (40 hours) during vacations.

LJMU's vacancy website

We know that a lot of our students want to find paid work while they are studying at LJMU. Our Vacancy website can help you find graduate vacancies, sandwich/industrial placements, internships/summer work, part-time jobs, volunteering opportunities and work-based learning placements. Over 1,000 local and regional employers regularly list opportunities on the website.

LJMU also works with WorkBank, a commercial employment agency providing a wide range of better paid student jobs across Merseyside in retail, administration, postal services, secretarial, call centres, computing, translation and marketing. Workbank is based in our Students' Union.

entry requirements

LJMU welcomes applicants with a wide variety of educational qualifications from around the world. All international applicants must have an internationally recognised English language qualification, such as IELTS (International English Language Testing Service) or TOEFL (Test of English as a Foreign Language). Your English language qualification must have been certified within the last two years for verification purposes. LJMU will accept other UKBA-recognised English language tests providing you attain the appropriate equivalent IELTS score.

This table summarises the minimum scores required by LJMU, although specific course requirements may differ depending on the programme you want to study.

Type of Programme	IELTS	TOEFL	TOEFL	TOEFL
		(PBT)	(CBT)	(IBT)
International Foundation Programme	4.5	480	150	52
Undergraduate degrees	6.0	560	220	83
Postgraduate degrees	6.0 – 6.5	580	233	90 – 91

For up-to-date details on all courses and entry requirements please go to:
www.ljmu.ac.uk/courses

To find out what qualifications are applicable in your country go to:
www.ljmu.ac.uk/international

faculties



LJMU's five faculties offer you an extensive choice of undergraduate and postgraduate taught programmes and research opportunities. This section is designed to give you an overview of activities and expertise of each of these faculties plus a taste of the type of courses they offer. For details on all our courses, go to www.ljmu.ac.uk/courses

faculty of arts, professional and social studies



- All programmes emphasise the development of professional skills and competencies
- The £37million Redmonds Building provides state-of-the-art facilities for the Liverpool Business School, School of Law and Liverpool Screen School
- Access to industry-standard newsrooms, filming, editing and post-production facilities, TV studios, radio and photographic studios
- The RIBA Award-winning Art and Design Academy is home to the Liverpool School of Art and Design
- Fine art, print-making and life-drawing studios, sit side-by-side with an architectural suite, plus a purpose-built gallery, ceramic and metal fabrication workshops

The Faculty has extensive links with business, industry and professional practitioners in the UK and internationally. Combined with cutting-edge research, scholarship and consultancy work, this helps ensure programmes are kept up-to-date with new developments and contemporary thinking.

Liverpool Business School has a strong heritage of providing students with the essential skills required for success in a contemporary global business environment. Its Employability Unit helps students secure relevant work experience following tailored sandwich programmes, and boasts links with leading national and international organisations.

The **School of Humanities and Social Science** provides the ideal environment to expand knowledge, horizons and opportunities, with courses leading to a broad range of careers. Staff excel in innovative and exciting research which directly contributes to contemporary teaching and learning methods in fields such as Youth Justice, Criminology, History and English.

The **Liverpool School of Art and Design** courses combine innovative approaches towards teaching and learning, together with the practical knowledge and skills you'll need to succeed in your chosen career after graduation. All courses offer opportunities for work-related learning as well as individually tailored tuition in your chosen field.

Liverpool Screen School offers undergraduate courses in Creative Writing, Drama, Film Studies, Journalism and Media Professional Studies and postgraduate courses in International Journalism, Screen and Interactive Media, Writing and Screenwriting. Its Production Unit acts as a vital conduit between the media industry and students and graduates, helping them secure both paid and unpaid commissions for a range of services, including corporate videos and short films. The School is part of the BBC North Developing Talent scheme and is also an accredited Skillset Media Academy partner.

The **School of Law** has a long-standing reputation for providing professional, practitioner and work-related learning opportunities for undergraduates and postgraduates. Past students have routinely made the finals and won national mootings, negotiation and mediation competitions, beating university teams from across the UK.

programme examples

BA (Hons) in Criminology

Criminology will take you beyond the usual definitions of what constitutes 'criminal activity' and will encourage you to think about what is meant by the terms 'criminal', 'crime' and 'punishment'. The programme critiques questions of power, social divisions and inequality, in relation to class, race, gender, age and sexual orientation, and their inter-relationship to 'criminality' and 'justice'. The programme offers opportunities to explore these issues on a local and global basis and the final year 'International Fieldwork in Criminology' module includes an international field visit. BA Criminology aims to produce critically-minded, employable graduates with a range of transferable skills able to make a significant contribution to their chosen profession.

MA in International Journalism

International Journalism is a highly practical programme which will give you the expertise to construct news stories, features and reviews not only in print, but also for online and broadcast media. You will develop the skills required to work in national and international media, global news networks and news agencies. Thanks to LJMU's links with local and national news organisations, you will have opportunities to secure essential industry experience while studying Anglo-US style and European approaches to journalism in English.

Masters in Business Administration

Business Administration will challenge your intellect, advance your managerial skills and boost your career prospects. You will gain an understanding of financial management, economics, operations management, research, law, human resources, marketing and strategy. By linking these specialist areas, you will gain insights into how organisations function while also developing your skills in leadership, creativity and problem solving – all of which are essential for effective management. Furthermore, these skills are transferable across many industries and sectors.

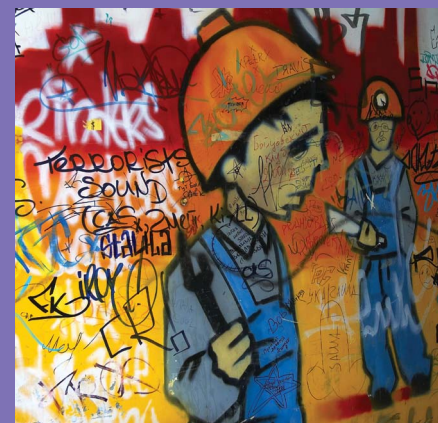
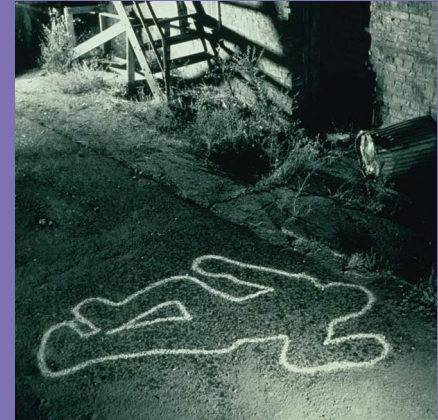
MA in Fine Art

Fine Art provides an opportunity for a small group of students to develop their practice in relation to a global context, filtered through the rich artistic infrastructure of Liverpool. Lectures, seminars and tutorials take place in the Art and Design Academy and are also hosted by partner organisations. This will enable you to benefit from the academic debate generated in the University together with the practical input and critical discussion that occurs when your work and ideas are brought into direct contact with a range of professional environments.

LLM in International Business, Corporate and Finance Law

International Business and Financial Law is a taught postgraduate degree examining key legal issues affecting business organisations operating in a global context. Core and option modules taught by subject specialists will help you develop valuable knowledge and skills in an academic and vocationally relevant context. You will secure the knowledge and critical skills needed to effectively contribute to the operational and strategic decision making processes within organisations. Your dissertation will enable you to complete an in-depth investigation into an area of law that you are particularly interested in.

To see all the courses offered by the Faculty of Arts, Professional and Social Studies, go to www.ljmu.ac.uk/courses



faculty of education, community and leisure

- 86% of students rated our teacher training as good or very good
- Nationally recognised expertise in PE, sport, coaching and dance
- Our dance staff are nationally and internationally recognised
- Over 100 years' experience of delivering teacher education programmes
- The UK's highest rated outdoor education programme and 100% student satisfaction ratings
- Courses exploring food and nutrition, events management, tourism and leisure



The Faculty of Education, Community and Leisure excels in a wide range of areas including teacher training, vocational education, education studies, tourism, events management, food, sport, dance, outdoor education and professional development.

The majority of teaching takes place at the IM Marsh Campus which offers excellent teaching facilities, including a fully equipped Learning Resource Centre, IT suites, cafe, sports facilities, drama and dance studios, science, design and technology laboratories.

Work-related learning, including work placements, is an integral part of all our courses. Such experience will not only give you great contacts out in the workplace, but will also enable you to try different career options before you graduate. Partnerships with schools ensure that all our teacher trainees receive varied professional training, enabling them to graduate as confident and competent teachers. All other programmes offered by the Faculty include opportunities for placements in industry and the community.

Our highly qualified and respected academic staff combine specialist knowledge and creative research with hands-on experience in their chosen fields. This combination of academic and professional expertise is reflected in the Faculty's programmes and helps ensure that our graduates are well equipped to meet the challenges of their chosen careers.

programme examples

BA (Hons) in Tourism and Leisure Management and MA in Tourism and Hospitality Management

LJMU offers both undergraduate and postgraduate programmes in this area, reflecting the world-wide demand for talented graduates and professionals. All students have the opportunity to complete work-related learning and undergraduates can choose to complete a yearlong placement working in industry. Fieldtrips in the UK and overseas are also integral to the programme. The Masters programme reflects industry demand for higher-level qualified managers and is targeted at both graduates and professionals already working in the tourism and hospitality sector.

BA (Hons) and MA in Sport Development

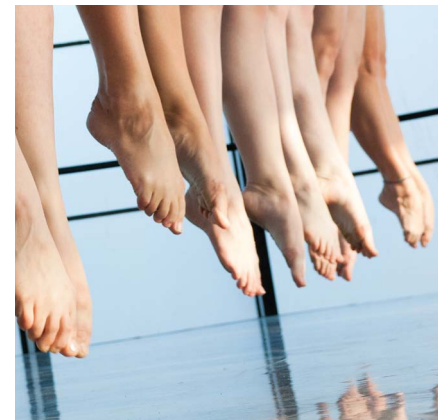
LJMU was the first university to offer degrees in sport development; now you can specialise in PE, business, health or inclusion. At undergraduate level, we offer you superb work-based learning opportunities that capitalise on our extensive network of industry contacts. The Masters programme builds on the Faculty's outstanding expertise in this field and graduates enjoy excellent career prospects reflecting the growing global demand for highly skilled sport development practitioners.

BSc (Hons) in Food and Nutrition

This programme will give you a holistic view of food and nutrition, embracing scientific, social and commercial perspectives in health, industrial, commercial, global and community based settings. You will gain a range of practical skills in our laboratory and product development kitchen, in food development and health promotion plus the ability to interpret theory and policy. Our fully equipped demonstration area will enable you to practice your demonstrating skills in a supportive and professionally relevant environment. You can opt to switch to community nutrition programme in year two of your studies.

BA (Hons) in Events Management

This programme will give you all the knowledge, skills and experience you need to run events of any size, in any venue and for a variety of audiences and purposes. Work-related learning will give you vital hands-on experience of managing events and thanks to Liverpool's extensive events calendar you will not be short of opportunities where you can put your learning into action.



faculty of health and applied social sciences



- Clinical practice suites for midwifery, adult nursing and paramedic students developed closely with NHS Trusts and ambulance service
- Authentic hospital training environment on-campus with resuscitation machines, adult and child patient simulators
- Degrees dedicated to producing health practitioners who are fit for professional practice
- Outstanding student placement opportunities thanks to LJMU's links with local NHS Trusts, local authorities, charities and voluntary organisations

The Faculty's influence extends far beyond Merseyside, thanks to our exciting research initiatives and teaching collaborations.

The Faculty has more than 3,000 full and part-time students together with 200 academic and support staff. Our excellent training facilities and courses of study ensure that students secure the right skills and experience to become effective practitioners in this challenging sector.

Midwifery, child, mental health, adult nursing and primary care programmes are designed to help you become competent, confident and skilled nurses and midwives capable of functioning professionally and independently. Multidisciplinary teaching encompasses patient care from conception to the grave and our much sought after graduates work in the public and private healthcare sectors both in the UK and internationally.

The Faculty's teaching environment is stimulating and challenging as well as caring and supportive to your individual needs.

Our courses will fully prepare you for your working life thanks to the combination of theory with hands-on experience gained via specialist training and placements.

The Faculty works in close collaboration with key stakeholders in health and social care, youth organisations and community groups in the public, private and voluntary sectors. Partners include strategic health authorities, NHS trusts, primary care trusts, workforce development confederations and local authorities.

programme examples

BSc (Hons) in Nursing Studies

Offered as a full-time, top-up degree programme, this course provides overseas nurses with enhanced skills in theoretical principles of nursing, research and leadership. It has been specifically designed to facilitate academic development for qualified nurses, registered with a Diploma in Nursing, in order to meet their educational and professional aspirations as graduate nurses. This is purely a theoretical programme. It is not an overseas nurses' adaptation programme or licence to practice programme with the Nursing and Midwifery Council within the UK.

MSc Nursing

In order to meet the challenges of delivering and advancing quality nursing care within a global context, there is a real need for qualified nurses to extend their practice through a sustained commitment to lifelong professional learning. This programme will provide registered nurses with enhanced skills in theoretical principles of nursing, research, teaching and leadership. The programme has been developed specifically to meet the needs of students interested in international perspectives in healthcare.

BSc (Hons) in Environmental Health

Environmental Health can be seen as both an art and science, touching upon almost every aspect of our daily lives: the food we eat, the air we breathe and the places we live or work in. The programme covers five key areas (housing, food safety, environmental protection, health and safety, and health promotion and protection), giving you scope to specialise after you graduate. You will not only gain an understanding and appreciation of some of the major issues affecting modern society but will acquire the skills necessary to try and resolve them. These problem-solving skills, along with the other skills you will develop over the course of the programme can be transferred to a variety of careers.

MSc Public Health

This programme recognises that health is a multi-faceted concept and has many determinants; social, economic, political, environmental as well as individual. As such it is based on the study of population health and well being, rather than illness and disease. The curriculum is informed by, and aligned with Public Health Training Curriculum (2007) and The Public Health Skills and Career Framework (PHRU 2008).

MSc in Health and Social Care

This programme is ideal for health practitioners leading the modernisation agenda within the healthcare sector. It is targeted at senior managers who need to become transformational and inspirational leaders making positive contributions to management practices to improve patient care, hit quality benchmarks and achieve commissioning targets.

To see all the courses offered by the Faculty of Health and Applied Social Sciences, go to www.ljmu.ac.uk/courses



faculty of science



- £6million investment in teaching and laboratory facilities
- Specialist facilities include an indoor 70-metre running track, Sports Acclimatisation Chamber, Analytical and Environmental Chemistry Unit, Forensic Science Laboratory, DEXA scanner for measuring body fat, muscles and bone density, driving simulator, neuroscience and psychophysiology facilities, eating behaviour laboratory, chronobiology lab and access to the world's largest robotic telescope
- Tom Reilly Building opened by Liverpool FC and England footballer Steven Gerrard
- World-leading research in astrophysics, anthropology, sport and exercise sciences and allied health sciences

LJMU's Faculty of Science is renowned for its innovative approach to teaching and research and comprises four academic Schools: the Astrophysics Research Institute, Pharmacy and Biomolecular Sciences, Natural Sciences and Psychology, and Sport and Exercise Sciences.

Our academics are not afraid to challenge conventional wisdom or approach topics in fresh and imaginative ways. This passion for scientific advancement means that our students are constantly working at the cutting edge of their discipline.

Field work and lab-based projects are central to all our programmes. Many final year students complete practical projects in research laboratories based at the University, in local hospitals or in industry.

Our graduates, both home and international, are highly sought after, and the diversity of career paths – from laboratory technician to zoologist, pharmacist to astronomer – reflect the range of opportunities open to today's scientists.

Many of our science degrees are recognised by professional bodies, including the British Psychological Society and the General Pharmaceutical Council, which accredits our pharmacy programmes.

Whatever your needs, undergraduate, postgraduate or professional, the Faculty of Science has a range of courses that will provide you with a rewarding, vocationally relevant and high quality educational experience.

programme examples

MPharm in Pharmacy

Our School of Pharmacy and Biomolecular Sciences is one of the oldest in the UK and renowned for producing 'industry ready' graduates. Accredited by The General Pharmaceutical Council, the programme ensures that graduates are able to apply scientific principles to practical clinical situations encountered by working pharmacists. Close links with a number of leading hospitals – including the Royal Liverpool, Broadgreen, Aintree, Wirral and Alder Hey Children's Hospital – further enhance the quality and relevance of the curriculum and provide excellent pre-registration training and employment opportunities.

MSc in Industrial Biotechnology

Close links with industry give students access to a range of placement opportunities in industrial settings or research laboratories. In addition to practical sessions delivered as part of the course, you will complete a 4 month industrial placement enabling you to secure vital professional experience and training and complete an independent and original research project. Graduates enjoy great career prospects in the pharmaceutical and fermentation industries as well as in recombinant DNA and microbial-research laboratories.

MSc in Health Psychology

Accredited by the British Psychological Society, this programme features a strong emphasis on both psychological investigation and the consideration of ethical and professional issues. With a focus on behaviour and behavioural change, students develop the relevant academic, research and communication skills for a range of health related careers. The programme is open to graduates of psychology and other disciplines, but for those with GBC the course provides Stage I training towards Chartership as a Health Psychologist.

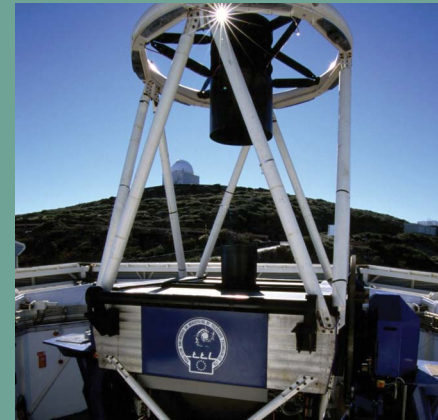
MSc in Virology

This unique distance learning programme is primarily targeted at staff already working in diagnostic virology laboratories (though other students are welcome to apply). Accredited by the Institute of Biomedical Science, graduates are eligible to apply for Chartered Scientist status. Much of the programme has been developed by practising virologists and the curriculum is regularly updated to reflect the dynamic nature of developments in diagnostic virology.

MSc in Clinical Exercise Physiology

This highly vocational and practical course offers you a unique opportunity to gain a wealth of practical skills, including 12-Lead ECG, echocardiography, phlebotomy, basic life support and exercise prescription. The course is suitable for those with an undergraduate degree in sports science, health related subject and physiotherapists, and you will have an opportunity to learn from national and international leaders in the field of clinical exercise physiology.

To see all the courses offered by the Faculty of Science, go to www.ljmu.ac.uk/courses



faculty of technology and environment

- Excellent teaching laboratories and workshop facilities
- Computing facilities supporting industry standard software
- Supportive and well-qualified academic staff
- Internationally recognised research in engineering and maritime, computing and the built environment.
- UK's most advanced marine and simulation facilities



The Faculty of Technology and Environment comprises three Schools: the School of the Built Environment, the School of Computing and Mathematical Sciences and the School of Engineering, Technology and Maritime Operations. In addition the Faculty contains three smaller units: the Lairdside Maritime Centre which forms part of the Liverpool Maritime Academy, the European Institute for Urban Affairs and the General Engineering Research Institute.

The Faculty has over 3,500 students studying on a range of sub-degree, undergraduate and postgraduate programmes across disciplines including Computing, Software Engineering, Mathematics and Statistics, Mechanical, Automotive, Marine and Electrical and Electronic Engineering, Maritime Studies, Product Design, Civil Engineering, Planning, Property and Construction.

Our aim is to provide an educational experience which develops technical graduates who are capable of applying their knowledge, creativity and innovation skills in a modern, professional environment. Courses are informed by the latest thinking and techniques and are supported by world class application-oriented research. Graduates are highly sought after by employers and many occupy senior positions within major UK and international companies.

The Faculty attracts students from around the world which greatly enriches our learning environment. We also run programmes with academic and industrial partners based in Ghana, Saudi Arabia, United Arab Emirates, Malaysia, India, Sri Lanka and China. Partners include the University of Malaysia, Xidian University, Peking University, University of Manchester, University of Warwick, Cambridge University, Shanghai Maritime University, Ningbo University and many more. The Faculty has around 1,200 students studying on collaborative programmes around the world.

programme examples

MEng/BEng in Civil Engineering

Accredited by The Institution of Civil Engineers (ICE), this course focuses on the core subjects of structural analysis and design, hydraulics, geotechnics, materials, surveying and construction management and also develops work-related skills such as problem solving and teamwork. As a graduate you would be involved in the design and construction of the infrastructure that shapes and supports communities such as hospitals, roads, bridges, flood prevention, water supply, sanitation and schools and railways. You will have the choice of completing a yearlong placement which will give you first-hand experience of working in the industry.

MSc in Computing and Information Systems

Targeted at graduates working, or planning to work, in a computing environment this course is designed to enhance your career prospects by helping you gain additional knowledge and skills in the areas of Computing, Information Systems and Management of Computer Technology. Teaching focuses on two core areas: computer systems and information systems management enabling you to keep up-to-date with technical innovations in hardware and software systems along with their operational and managerial environment.

MSc in Construction Project Management

This programme will develop your knowledge and practical skills in project management in the construction and property sectors. Graduates enjoy full exemption (excepting the Assessment of Professional Competence) from the Royal Institution of Chartered Surveyors educational requirements and are also eligible for direct entrance on to the RICS APC professional training programme.

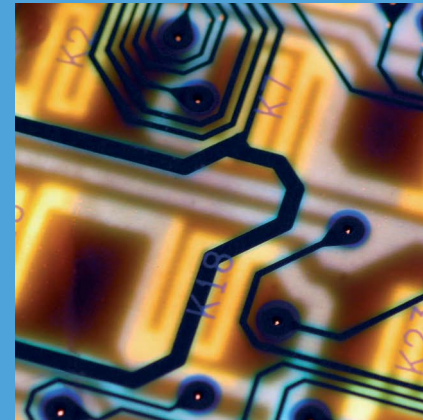
MSc in Microelectronic Systems Design

Microelectronics design is a growing industry in the UK which now has a number of world class design companies such as Arm Holdings, Cambridge Radio Silicon (CRS) Ltd and Wolfson Microelectronics. This course is aimed at graduate engineers in electrical and electronic engineering. It covers the design process from VLSI circuit design through to fabrication and testing, dealing with key design issues including device complexity, optimise circuits with both analogue and digital signal components. This course is approved by the Institution of Engineering and Technology (IET).

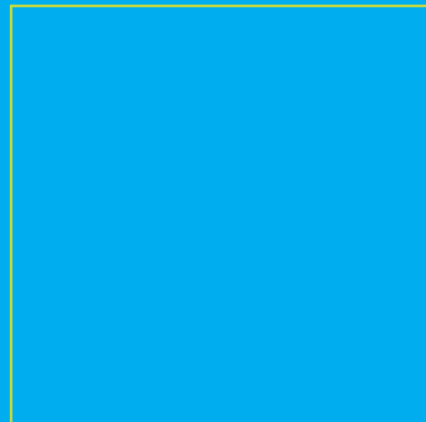
MSc in Marine and Offshore Engineering

This is a well-established and highly regarded course supported by research and industrial expertise designed to develop effective engineers who can succeed in the field of marine and offshore engineering consultancy, design and management. The curriculum takes you from the basics of marine and offshore knowledge to a stage where you can analyse concepts and develop solutions.

To see all the courses offered by the Faculty of Technology and Environment, go to www.ljmu.ac.uk/courses



fees and funding



Studying at LJMU offers international students excellent value for money and the opportunity to secure an internationally-respected qualification plus outstanding career prospects.

It is essential that you have adequate funding to support yourself during your studies at LJMU. When you apply for your visa or entry clearance, you will need to provide evidence of having enough money to support yourself for the duration of your programme, and to pay for all of your living expenses. The good news is that the cost of living in Liverpool is one of the lowest in England, which means your money will go even further, allowing you to enjoy your student experience to the full.

tuition fees

Your annual tuition fees are payable in full on registration or you can choose to pay 50%, with the balance paid in full four months later.

Here is a breakdown of our tuition fees for **2012/2013** entry:

1. Pre-degree programmes in the International Study Centre

Type of Programme	Tuition Fee
English Language Preparation Course	£3,365 per term
International Foundation Year Programme	(Business, Law and Social Studies) £10,095 (Engineering and Science) £10,350
Pre-Masters/Pre-MBA programme	(14 weeks) £5,620

2. Undergraduate and postgraduate programmes

Type of Programme	Tuition Fee
Foundation/HND Programmes	£9,000
Pre-sessional English Language validated courses	£1,125 per 4 week block
Class-based (Undergraduate and Postgraduate)	£11,055
Laboratory-based (Undergraduate and Postgraduate)	£12,040
MBA	£11,925
MSc Engineering Programmes	£12,040
MSc Maritime Programmes	£11,055
MBA Maritime Management	£11,925

living costs

Liverpool and LJMU offers you an affordable high quality student experience, with £6,000 total annual living costs compared to an average of £9,500 in London.

In addition to academic fees, you must budget for living costs such as accommodation, food, clothing, books, local travel and entertainment. Living costs will vary depending on individual lifestyles and students with dependents will need to budget for additional expenses. We recommend that you budget for between £5,500 and £7,000 per year for your living expenses.

If you are accompanied by your family the British Council estimates that you will need around £5,500 more per year for your spouse and a further £2,000 per year for each of your children.

Quick guide to how much it will cost to study at LJMU (average figures only)

Living expenses	£5,500 to £7,000 per year
Course tuition fees	£9,000 - £12,040 depending on course studied
Flights to the UK	£300 to £1,000

Remember undergraduate and taught postgraduate programmes courses run over an academic year of nine months; postgraduate research programmes last the full calendar year of 12 months.

LJMU International Academic Awards

All international students applying to LJMU for full degrees starting in the academic year September 2012 to September 2013 will be entitled to an academic award (fee waiver) of £1,000 on their first year tuition fees. The award will be offered at source and deducted from year one of the course fee.

Did you know that international students qualify for free or subsidised treatment from the National Health Service providing they are registered with a Doctor in Liverpool.



step-by-step guide to making your application

LJMU recruitment managers and academics attend recruitment fairs and events in many countries around the world. These events are a great opportunity for you to find out more about our courses, the LJMU student experience and life in Liverpool. You can also speak to our representatives about your qualifications and which course would be best for you.

For details please go to www.ljmu.ac.uk/international

international study centre courses

(English Language Preparation course, International Foundation Year (Business, Law and Social Studies; Engineering, Computing and Life Sciences) and Pre-Masters/Pre-MBA)

If you are interested in applying for one of our pre-degree courses, you should contact the International Study Centre and talk to one of our multi-lingual Student Enrolment Advisers before completing the online application form (www.studygroup.com/isc/ljmu/).

The Advisers will be able to guide you through the process, give advice on English Language requirements and indicate what documents, such as academic transcripts and certificates of English language qualifications, you will be required to submit as part of your application.

For more details on LJMU's International Study Centre, go to www.ljmu.ac.uk/isc

english language support for undergraduate and postgraduate students to improve IELTS

If your English language does not meet the required entry requirements for your course you may still be offered a place on the condition that you successfully complete a pre-sessional English course.

LJMU offers pre-sessional English language courses to undergraduate and postgraduate students to help develop your English language ability ahead of starting your course. Courses are delivered over four, eight or 12 weeks, with each block of four weeks aiming to increase an IELTS score by 0.5. For example, a 12 week course of study will lift an IELTS score by 1.5 IELTS.

LJMU English Language entry criteria will range from IELTS 6.00 to 7.00 depending on the requirements of your chosen course. You must achieve an IELTS score that is within 1.5 of the course requirements in order to be offered entry onto the pre-sessional courses.

For more information, please email: international@ljmu.ac.uk

undergraduate programmes

(such as BA (Hons), BSc (Hons), MPHarm, MEng)

If you are applying for a Bachelors degree, a Higher National Diploma or a Foundation programme, your application should be made via the University and College Admissions Service (UCAS).

UCAS is a central online application system which allows students to apply for up to five courses in the UK via one application. Students normally apply for a specific programme at five different universities, but you can apply for more than one programme at the same university.

1. Undergraduate student applicant completes online UCAS application form (www.ucas.com).
2. Application sent by UCAS to LJMU.
3. Student applicant informed of decision.
4. Student applicant responds to offer.
5. Student applicant accepts offer and pays deposit (if required).
6. Student applies for study visa (www.ukvisas.gov.uk).
7. Accommodation and pre-departure information sent to student applicant.
8. Student arrives at LJMU.

postgraduate students

Applications for postgraduate degrees and other awards can be completed online via the LJMU website using our online application form: www.ljmu.ac.uk/pgapplication/

Please note: If you are applying for a research programme (PhD or MPhil), you must include details of the research that you wish to undertake so that LJMU can identify the best supervisor for you.

1. Complete the online application form: www.ljmu.ac.uk/pgapplication/
2. Student applicant informed of decision.
3. Student applicant responds to offer.
4. Student applicant accepts offer and pays deposit (if required).
5. Student applies for study visa (www.ukvisas.gov.uk).
6. Accommodation and pre-departure information sent to student applicant.
7. Student arrives at LJMU.

your visa application

As soon as you have received a place at LJMU you should contact the Entry Clearance Office at the British Embassy, British High Commission or Consular Office in your own country to check whether you need a visa for entry into Britain. You are advised to do this as soon as you can as the visa application process can take a long time. We would also advise you to apply for entry clearance before travelling, regardless of whether you are a visa national or not. This is particularly important if you intend to come with your spouse and/or children. If you do not obtain entry clearance before coming to the UK, and the Immigration Officer at the port of entry does not allow you to enter as a student, you can only appeal against the decision from outside the UK. You have no right of appeal against refusal of entry unless you were seeking entry for less than six months.

PLEASE NOTE: To obtain one of the following documents: an Entry Certificate (for Commonwealth countries), an Entry Visa (for most other non European Community foreign countries and some Commonwealth countries), or the Home Office Letter of Consent you should go to the British Embassy or High Commission in your own country, and present the following documents:

- Passport
- Letter of unconditional acceptance for a full-time course at LJMU
- Evidence of financial support for the programme
- Two recent photographs of yourself (passport-size)
- All relevant educational diplomas and certificates
- A declaration of your intent to return home on completion of your course of study

ATAS certificate for postgraduate students only

If you are doing a taught Masters, Masters by Research, or MPhil/PhD course you should check whether or not you require an ATAS certificate. Only postgraduate students who need a visa to study in the UK or who would like to extend their current leave to remain as a student need to get an ATAS certificate.

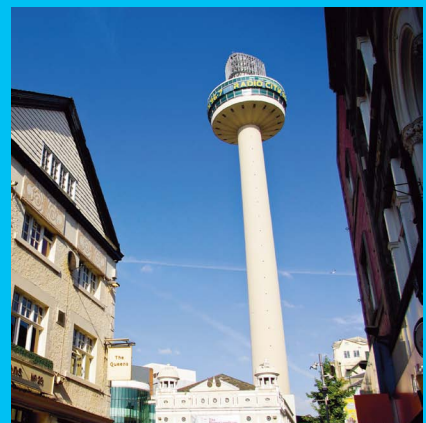
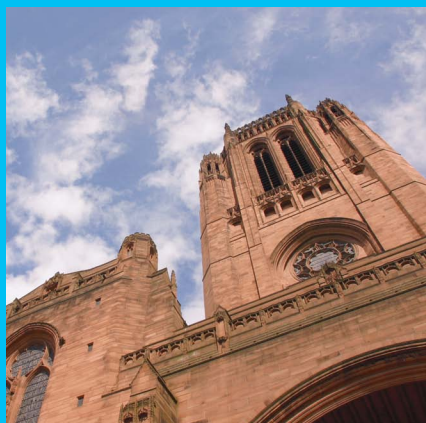
If you need advice about whether or not you need an ATAS Certificate or any aspect of the application process, please contact LJMU's International Team or your local British Council Office.

Approved Agents

You may also apply via an LJMU approved agent. To check if an agent is LJMU approved please our international enquiries team: international@ljmu.ac.uk

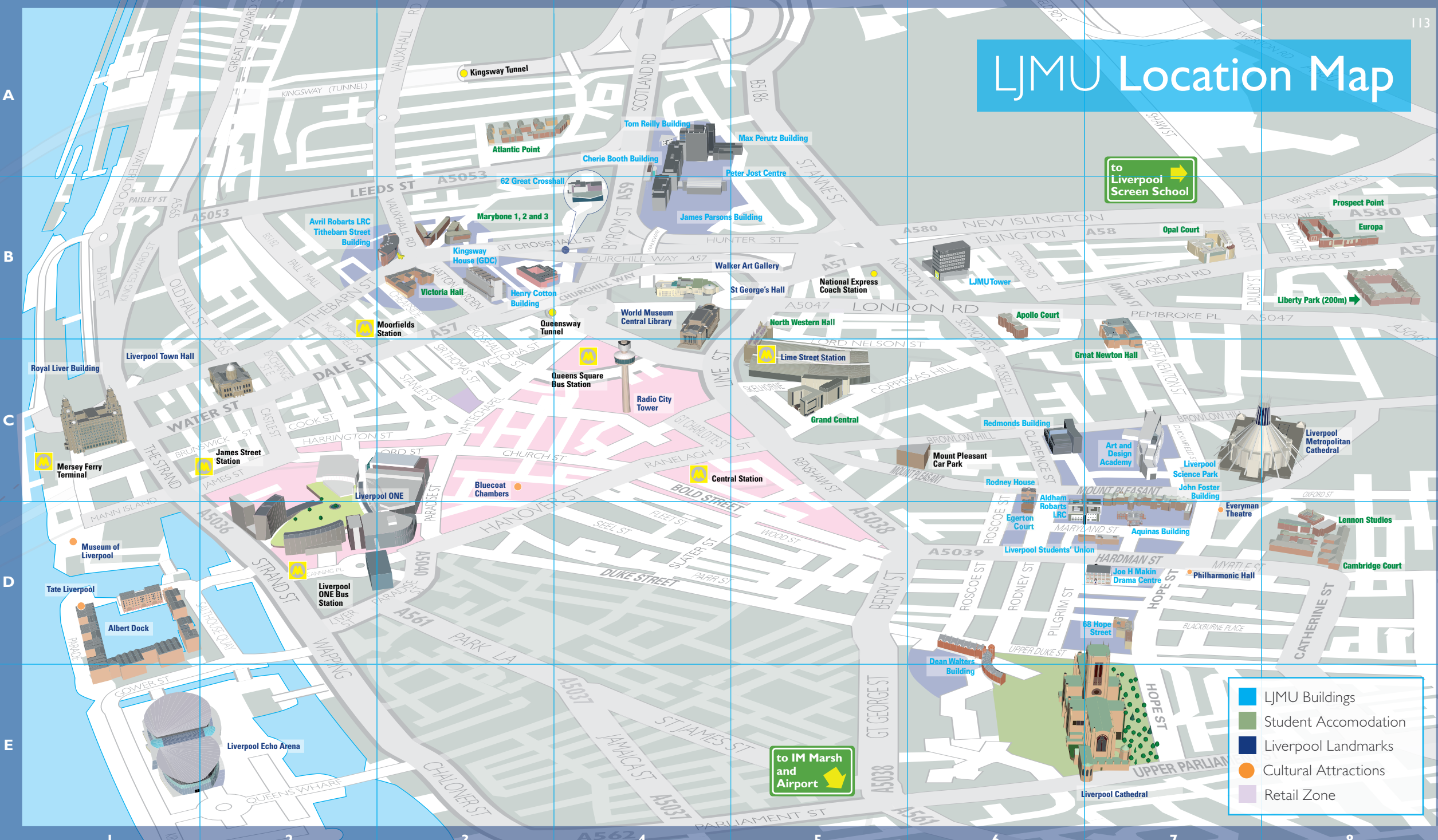
location maps

However you decide to get here, you'll find that Liverpool is extremely accessible from just about any destination. There are major motorway links to the M62, M57, M58 and M56 and all are within easy reach of the city centre and LJMU itself. Liverpool is well served by public transport too, with a mainline railway station, Liverpool Lime Street, located right in the city centre, a National Express coach station, a ferry terminal and an underground railway. In addition, there are two city centre bus stations, taxis are cheap and plentiful, and, if you need to go over the river, you can always take a ferry 'cross the Mersey.



LJMU Location Map

Aldham Roberts Centre	D7
Aquinas Building	D7
Art and Design Academy	C7
Avril Roberts Centre	B3
Byrom Street Building/Shop	B4
Charlie Robertson Centre	B3
Cherie Booth Building	B4
Dean Walters Building	D6
Egerton Court	D6
Great Crosshall Street	B3
The Haigh Building	D7
Henry Cotton Building	B3
68 Hope Street	D7
James Parsons Building	B4
Joe H Makin Centre	D7
John Foster Building	C7
Kingsway House (GDC)	B3
Liverpool Science Park	C7
LJMU Tower	B6
Max Perutz Building	A4
Peter Jost Centre	B4
Redmonds Building	C6
Rodney House	C6
Centre for Entrepreneurship International Study Centre	
Roscoe Court	D6
Tithebarn Street Building/Shop	B3
Tom Reilly Building	A4
Student Accommodation	
Apollo Court	B6
Atlantic Point	A3
Cambridge Court	D8
Europa	B8
Grand Central	C5
Great Newton Hall	B7
Lennon Studios	D8
Liberty Park	B8
Marybone 1, 2 and 3	B3
North Western Hall	B5
Opal Court	B7
Prospect Point	B8
Victoria Hall	B3



- LJMU Buildings
- Student Accommodation
- Liverpool Landmarks
- Cultural Attractions
- Retail Zone

general information index

Accommodation	40	Faculty of Science	92	Sporting opportunities	44
Arrival support	66	Faculty of Technology and Environment	96	Student profiles	8, 17, 19, 31, 34, 52, 67, 72
Campus developments	38	Fees and funding	100	Student support	66, 68
Career matters	72, 76	Graduate Development Centre	76	Students' Union	42, 54
Centre of Entrepreneurship	74	Graduate Skills	26	Teaching and learning	18, 22
Course information	18, 28, 30	History	4	When to apply	104
Degree Preparation Courses	32	How to apply	104	Work-related learning	24, 58
English language courses	32	International Study Centre	34	World of Work Programme	12, 15, 16, 20, 58
Entry Requirements	77	Learning Resource Centres	63		
Faculty of Arts, Professional and Social Studies	80	Library resources	65		
Faculty of Education, Community and Leisure	84	Liverpool	46		
Faculty of Health and Applied Social Sciences	88	Location maps	108		
		Postgraduate opportunities	16, 28		
		Research degrees	30		



<http://twitter.com/ljmu>



www.youtube.com/ljmutv



www.facebook.com/liverpooljohnmooresuniversity

open days

for more information please visit
www.ljmu.ac.uk/opendays

The university reserves the right to cancel, suspend or modify in any way the information contained in this prospectus

This prospectus is available in different formats please contact us for more information

Designed and produced by LJMU
Corporate Communications and Uniform

LJMU © December 2011

find out what it's like to be part of the LJMU experience
and take a journey through life in our vibrant city...

visit **LJMU TV**
www.ljmu.ac.uk/international



website: www.ljmu.ac.uk/international
enquiry helpline: 0151 231 5090
email: courses@ljmu.ac.uk
LJMU TV: www.ljmu.ac.uk/ljmutv