

2013

Mini Guide for International students

AFRICA SOUTH KOREA SPAIN SRI LANKA ST LUCIA SUDAN SWITZERLAND SYRIA TUNISIA BOTSWANA BRAZIL BRUNEI BURMA BURUNDI CAMEROON CANADA CHINA COLOMBIA CONGO CROATIA CYPRIUS DOMINICAN REPUBLIC EGYPT EIRE ETHIOPIA FRANCE GAMBIA GEORGIA GERMANY GHANA GREECE GUINEA HONG KONG INDIA INDONESIA ISRAEL IRAN IRAQ ISRAEL ITALY IVORY COAST JAMAICA JAPAN JORDAN KAZAKHSTAN KENYA KUWAIT LIBANON LIBERIA LIBYA MALAWI MALAYSIA MALI MAURITIUS MEXICO MONROVIA MOROCCO MOZAMBIQUE NAMIBIA NEPAL NEW ZEALAND NIGERIA NORWAY OMAN PAKISTAN PHILIPPINES PORTUGAL QATAR RUSSIA RWANDA SAUDI ARABIA SERBIA SIERRA LEONE SINGAPORE SOMALIA SOUTH AFRICA

5000
INTERNATIONAL STUDENTS

130 COUNTRIES

£100 MILLION CAMPUS INVESTMENT

Connecting...

Over 280 Undergraduate and postgraduate courses

International Welcome Programme

ONE HOUR TO LONDON
ANYTIME TICKET

SINGLE SITE CITY CENTRE CAMPUS

GLOBAL LEADERS PROGRAMME

STUDY ABROAD

PRE-SESSIONAL ENGLISH COURSES

2011 THE AWARDS WINNER
ENTREPRENEURIAL UNIVERSITY OF THE YEAR & OUTSTANDING SUPPORT FOR STUDENTS

SMART CAMPUS

SOCIAL EVENTS & VISITS

LONDON CAMPUIS

Your Home From Home

TheHub

Coventry University

Ranked
No.46
UK University
in the Guardian
League Table

Source: Guardian University Guide 2013



www.facebook.com/coventryuniversityinternational
twitter.com/covintstudents

Contents

- 2** Welcome
- 3** 5 reasons to choose Coventry
- 5** Faculties and Schools
- 6** London Campus
- 7** Courses
- 9** Employability
- 10** Global Graduate
- 11** Work Experience
- 13** Campus Facilities
- 15** TheHub
- 17** The City
- 19** Accommodation
- 21** Welfare and Support
- 23** Scholarships
- 24** How to apply

Please read carefully

'The information contained in this mini guide has been prepared solely for the purpose of providing information about the University and should be used as a guide only. The mini guide does not constitute a legally binding agreement between the University and any other person. The University does not make any warranty about the accuracy of the information contained in this prospectus in particular whether it is complete, accurate or up to date. Whilst the University makes every effort to check the factual content at the time of publication, some changes will inevitably occur post publication. Prospective applicants should therefore not rely solely on the information contained in this prospectus and should contact the International Office on +44 (0)24 7615 2152 or visit the University website on www.coventry.ac.uk for more up-to-date information concerning the University.

To the extent permitted by law the University does not accept liability for any loss or damage of whatever nature which may be suffered by any other party as a direct or indirect result of the information contained in this mini guide.'





94%
employability
or further
study rate

Source: DLHE 2009/10

Number 1
UK university
for working
with business

Source: HE-BCI 2009-10

Number 1
UK university
for European
placements

Source: Ecorys 2011

In the top
3 modern
universities
in England

Source: NSS 2011

2011
THE AWARDS
WINNER

ENTREPRENEURIAL
UNIVERSITY OF THE YEAR
&
OUTSTANDING SUPPORT
FOR STUDENTS

Download our **CU**view app



1 Download the CUview app on your device

Compatible with iPad, iPhone and most Android devices



2 Point your device when you see the CUview logo to make the object come to life

Powered by Aurasma



Welcome to **Coventry**

A World of Opportunity

Quality teaching, employable graduates, strong links with industry and an innovative and dynamic approach to learning – just a few highlights of studying with Coventry University.

Over 20,000 students, including 5,000 international students from more than 130 countries study on our diverse and vibrant campus.

Our curriculum is reinforced with modules specifically tailored to provide all students with essential employability skills. With a wide range of courses across two campuses, Coventry University is the first step towards your future career.

“ The teaching approach is innovative, especially the activity-led learning during my first year. The staff are extremely helpful and have increased my desire to learn ”

Shivali Pai, India



5

reasons to choose Coventry



PRE-SESS

E

COURS

Excellent teaching is
fundamental to
everything we do

2

We care about
the quality of our
teaching. We
maximise the contact
hours you get and
invest in academic staff

posts so that the staff: student
ratio is consistently high.

You will experience teaching that
is designed to be interactive,
stimulating and brings your
subject alive.

1

Preparing you for a successful career

We focus on the employability of our
students and have a range of industry
leading initiatives to prepare you for
graduate employment. The majority of
our courses offer the opportunity for
work experience.

Preparing you for a successful career is central to the
design of our courses and the support we provide. We
know that securing a graduate-level position is the return
you want from your investment in tuition fees.

3



Placing the course at the centre of your academic experience

3

Your classmates and the lecturers who teach on the course, will form the community of learning that you join.

We make sure you get the opportunity to apply the knowledge you are learning to real problems drawn from working life.



1:16
STAFF TO
STUDENT
RATIO

Become a global graduate in a global community

4

All students at Coventry are encouraged to become global graduates. Employers tell us that they are more likely to hire graduates who have had an international experience and bring a global outlook to their work.

Our International Experience and Mobility Service offers you the opportunity to study or work abroad. You can gain international experience and the skills and attributes to become globally employable.



Be enterprising and develop your entrepreneurial skills

5

Employers value enterprising graduates who can innovate, work creatively and implement new ideas successfully.

We are leaders in enterprise; it is embedded into our teaching and our people. We have an award winning Technology Park which focuses on the development of innovation-led, high growth, knowledge based businesses.

94%
employability
or further
study rate

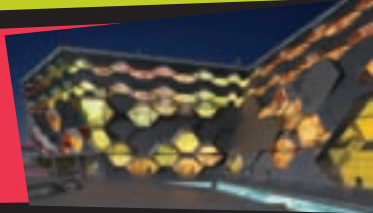
Source: DLHE 2009/10

Faculties and Schools

The Faculty of Business, Environment and Society provides a dynamic, innovative and enterprising educational experience for all of its students. It is one of the largest business schools in Europe with excellent links to major national and international organisations and close partnerships with universities around the world



The Faculty of Engineering and Computing is a large applied scientific and technological centre for learning and research. Its activities range from mathematics to civil engineering and building, computer science, mechanical engineering and aerospace.



The Faculty of Health and Life Sciences was awarded 'Centre of Excellence' status in 2005 for its work in the development of new and effective learning and teaching approaches. It has strong partnerships with employers from a range of sectors including the National Health Service, Social Services, Strategic Health Authorities and scientific industries.



Founded in 1843, **Coventry School of Art and Design** has a long established reputation for excellence that is constantly reaffirmed in the everyday activities of this vibrant part of Coventry University. The school prides itself on being industry-facing and this is reflected in the access we provide to work placements, live projects and staff with extensive knowledge of and experience in the cultural and creative industries.



Coventry University
London Campus offers a
range of undergraduate
and postgraduate
programmes all
delivered in the centre

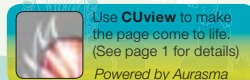
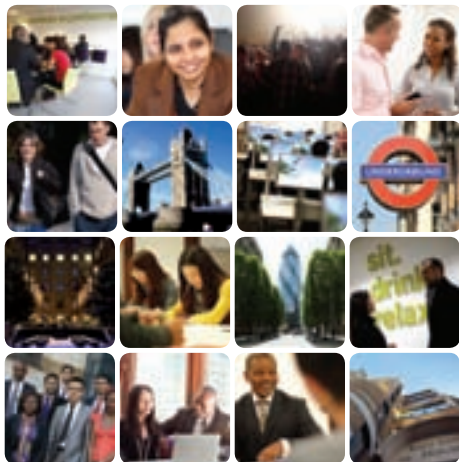
**of one of the world's largest
financial centres.**

A real business experience: Our expertise in business and in-depth understanding of what today's employers are looking for offers you a curriculum that delivers skilled, employable graduates. Our ethos of a real business experience can be seen in everything we do, from the design of the campus through to work experience opportunities – your employability really is our priority.

Why the London Campus?

- **Guaranteed* work experience opportunities** - committed to offering a range of work experience options as part of your course.
- **Curriculum infused with employability skills** - all of our courses have been designed to be interactive and relevant to the business world.
- **Leadership lecture series** - presentations delivered by leading business figures from a range of sectors
- **A unique simulated trading floor** - developed in conjunction with financial industry leaders
- **Excellent teaching** - our tutors have a wealth of international experience from a range of business and industry sectors
- **Location** - less than a five minute walk to Liverpool Street station, the historical Spitalfield market and Brick Lane.

LONDON CAMPUS



Courses



We understand that you are making a significant investment in your future and we're committed to providing you with a substantial return on that investment – both during your time at Coventry University, and when you graduate.

**SOCIAL
EVENTS
& VISITS**

To achieve this, the courses available at Coventry have a strong focus on employability. We design our courses to be lively, relevant and employment focused.

Many of our courses are externally accredited, as we know getting the best degree you can is vital for you.

We offer a wide range of innovative undergraduate, postgraduate, foundation and top up courses as well as English Language tuition.

“ What I enjoy most about my course is the variety of subjects that it covers! Each of them has a huge emphasis on employability and social awareness ”

Mark Paul Sallos,
Romania





280
graduate
and
graduate
courses



Accountancy and Finance	Graphic Design
Advertising	Health
Aerospace	Hospitality and Tourism
Architecture	Human Resource Management
Automotive Design	International Relations
Automotive Engineering	Journalism
Biological and Molecular Science	Languages
Building and Construction	Law
Business and Management	Logistics
Civil Engineering	Marketing
Computer Engineering	Mathematics
Computer Games and Multimedia	Mechanical Engineering
Computing	Media and Communications
Criminology	Motorsport Engineering
Disaster Management	Nutrition and Food Science
Economics	Occupational Therapy
Electrical and Electronic Engineering	Oil and Gas
Engineering Management	Peace and Reconciliation Studies
English	Performing Arts
Enterprise and Entrepreneurship	Pharmacology and Drug Discovery
Environment and Sustainability	Physiotherapy
Ethical Hacking	Photography
Event Management	Politics
Fashion	Product Design
Fine Art	Psychology
Forensics	Sociology
Geography	Sports Management
	Transport Design

Visit www.coventry.ac.uk/international/courses for a full course list

94%



Employment or Further Study Rate

Preparing you for a successful career

We know that securing a graduate-level job is the return you want on your investment in tuition fees. Recent results show an impressive 94%* of our graduates gained employment or continued to further study six months after they left. We understand how challenging the marketplace can be for a new graduate, which is why most courses incorporate work placement and summer internships to help you stand out from other graduates. Our courses give you the knowledge, skills and expertise identified by employers in business, industry or the professions. In addition each year you can choose one Add+vantage module e.g. learning a language, starting a business, volunteering in schools or developing your leadership skills that makes your CV even stronger.

* Source: DLHE 2009/10

www.coventry.ac.uk/international/facts

Global Leaders Programme

The Global Leaders Programme is an exciting new development on offer to all our enrolled Postgraduate and high-flyer Undergraduate students; to prepare you for the challenges of the global employment market. The programme aims to strengthen and develop your broader personal and professional skills.

The programme is entirely workshop and session based without additional study. To become a member all you need to do is pay the fees (£150), we will then provide you with all the information you need to start accessing GLP workshops, events and seminars.

To find out more visit

www.coventry.ac.uk/glp

BECOME A GLOBAL GRADUATE



Helping you become a global graduate

We give you the opportunity of an international experience so you can become the 'global graduate' that employers are now looking for. Our courses normally include an opportunity for a work placement or study period abroad. There are exceptions where professional statutory body requirements make it difficult, but even then we encourage you to go on overseas fieldtrips or summer internships. We also build international content into your course where appropriate.

Encouraging you to join our global community of learning

We know that you want to be in a university that is not just national, but part of a global community of learning. Currently one in four of our students comes from outside the UK. There are online and classroom teaching activities, visits and social events throughout the year to bring students of different nationalities together to do joint projects, listen to speakers, learn about each other's cultures, enjoy each other's company, and form new friendships.



Use **CUview** to make the page come to life. (See page 1 for details)

Powered by *Aurasma*

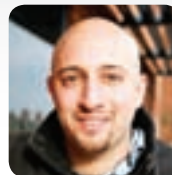
Work experience

The majority of our undergraduate courses offer a sandwich, study abroad or business placement option – all of which give you valuable opportunities to enhance your career.

The University itself makes many jobs available to students on a part-time basis. We employ almost 1,000 students in a variety of roles each year.

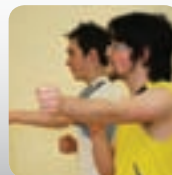
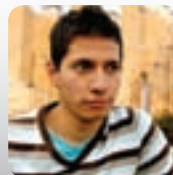
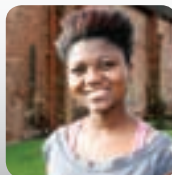
These include being a student ambassador and helping to run open days, graduation, our students union and other on-campus activities.

These experiences help you to develop interpersonal skills and an understanding of how a large organisation works which looks good on your CV!



Studying here has given me the opportunity to do an industrial placement year. This helped me gain time-management, leadership, communication and problem-solving skills

Gustavo Espinoza-Ramos, Peru





Part-time Work Opportunities

International students studying in the UK are eligible to work for up to 20 hours per week during term time and full-time during holiday periods. You can also carry out internships and work placements. Most EU students can work in the UK without any restrictions.

Finding a part-time job can be relatively easy; in fact Coventry University itself employs a large number of international students to work on campus in Coventry.

TheFutureWorks recruitment service on campus is dedicated to helping students find work opportunities. Every year some 250 students get part-time jobs this way.

Job opportunities and advice can be found at www.thefutureworks.org.uk



Campus Facilities

“ The University’s Lanchester library is enormous; you can find everything in there! ”

Sachin Sasikumar, India



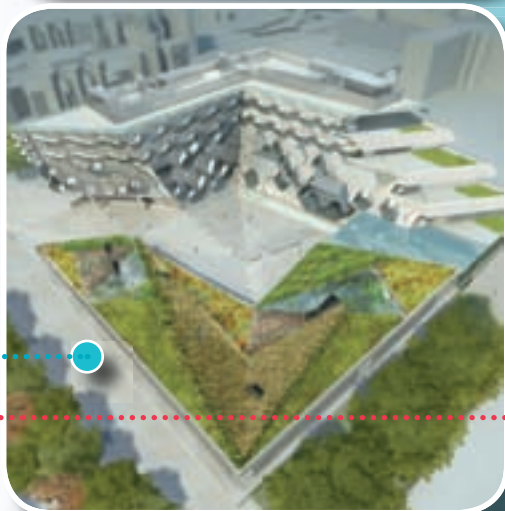
**£100
MILLION
CAMPUS
INVESTMENT**

The **Lanchester Library** offers a range of modern study environments. With over 350,000 books, 2,000 print journals and 8,000 electronic journal titles and a range of multimedia resources, it provides a focal point for student learning and information access.

In the centre of campus is a brand new student building **The Hub**, which provides a vibrant home for our Students Union as well as a range of other services all under one roof. This includes careers and employability, spirituality and faith, a doctor's surgery, counselling, welfare and disabilities.

The £35 million 'Hub' is just one part of a £150 million redevelopment programme at the University's city centre campus in Coventry. This also includes the new £60 million home for the **Faculty of Engineering and Computing**.

The University prides itself on its excellent provision for sport and recreation with a wide range of facilities and services. The **Sports Centre** offers a fitness suite, four-court hall - suitable for volleyball, basketball, netball, cricket and football, two-court hall – suitable for table-tennis and badminton and a dance studio - ideal for exercise classes.





TheHub is the
centre of your
student and
social life on
campus

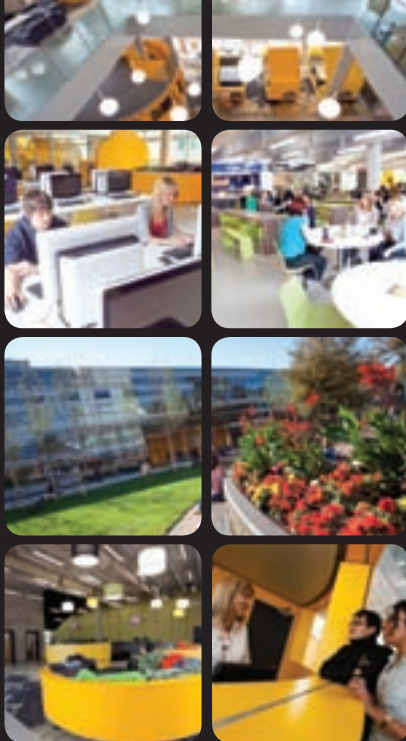
You will be among the first to use the new £35 million students' building **TheHub**

The**Hub** is our purpose built student building that sits at the heart of Coventry University campus. Throughout the day, the space allows you to relax, meet up with friends or study informally. In the evening, the building becomes a vibrant venue where a 700-capacity club, a cinema and performing arts space deliver an excellent experience.

The**Hub** brings together a wide range of student advice and support services all under one roof. These include the Students' Union, a supermarket, an extensive food court serving world cuisine, deli, pizza and pasta, food-to-go and Costa Coffee. Other services available to you in The**Hub** include the Institute of Applied Entrepreneurship, a hairdressers and thefutureworks, our very own recruitment agency.

While you are studying at Coventry The**Hub** will give you a place to touchdown between lectures and get online, hold small study group meetings in one of the many pods available, have a meal or just grab a coffee between lectures and chat with friends.

For more information about The**Hub** visit www.coventry.ac.uk/thehub



Use **CUview** to make the page come to life. (See page 1 for details)

Powered by Aurasma

The City



Coventry University is nestled in the heart of the city and occupies a compact, single-site campus. The University Square and surrounding area form a protected environment where you will find the old Cathedral ruins, the new Cathedral, the award-winning Herbert Art Gallery and Museum, cobbled lanes, Georgian architecture, speciality shops, pavement cafés, and restaurants.

England's 11th largest city is an exciting place to live with extensive arts, culture, heritage and plenty of events to keep you entertained. Coventry is a welcoming, friendly and safe city and the low cost of living makes it one of the most affordable for students too.

Expect world-class entertainment in Coventry. Some of the biggest names in music, including Coldplay, Take That and Oasis have performed at the Ricoh Arena. As well as open-air concerts, there are cultural festivals, farmers' markets and a range of music and dance events.

It's an exciting time to be living in Coventry right now.



Culture

Plenty to see including Herbert Art Gallery and Museum, a world famous cathedral and Coventry transport museum.



Shopping

Coventry has a diverse range of shopping outlets for you to explore. It also has one of the oldest circular indoor markets in Europe!



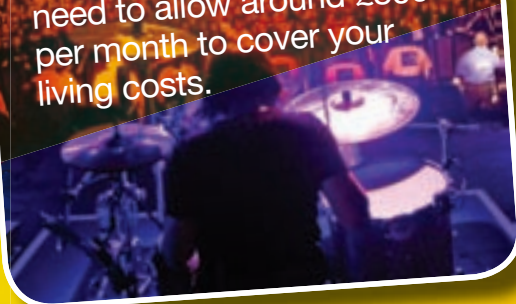
A Safe City

A friendly city to live in, and one of the safest cities in the country



Cost of Living

Coventry is one of the cheapest cities in the UK for the cost of living. You will need to allow around £800 per month to cover your living costs.



“ Living in Coventry is not expensive at all. You can afford paying your rent, groceries and still have nights out. It is a very nice city, with preserved historical places, which can take you back in time ”

Yifan Zhang, China

Accommodation

Living away from home in student accommodation is a great way for you to make new friends and integrate quickly into university life. Coventry University has a good range of comfortable, secure and reasonably priced accommodation.

We know that our students want a choice of accommodation options to suit their preferred lifestyle. We offer that range and we have our own letting agency if you want to rent privately in the city.

Our accommodation options include:

- **University-owned accommodation**
- **Catered accommodation**
- **Self-catered accommodation**
- **Approved halls of residence**
- **Private accommodation**
- **thefuturelets** (the University's own lettings agency).

Current accommodation costs range from £97.50 - £210 per week depending on the type of accommodation you require.



“ Each room within the hall is en-suite with broadband internet access. Each floor has its own shared kitchen. The security ensures that each student is secured and safe within the accommodation ”

Frank Abu, Nigeria

Your Home
From Home



Welfare and Support



The wellbeing of students at the University is very important to us. We have a well developed network of support services to help and guide you during your time here.

As well as the International Office you will be supported by a range of expert services at the University.

The International Office provides a meet and greet service from Heathrow and Birmingham airports, organises and participates in the International Welcome Week Programme and can assist with course enrolment and registration with essential services such as a doctor.

The Welfare team will continue to lend their support if required throughout your time at Coventry. The team includes multi-lingual staff and many of them have experienced living and studying abroad themselves.

You can contact our Student Support and Welfare team by email at **welfare.io@coventry.ac.uk**



5000

INTERNATIONAL STUDENTS

The Graduate Centre

Coventry University is one of a select few in the UK to provide a dedicated facility for its postgraduate students. The Graduate Centre is designed specifically to meet the needs of postgraduate students, having access to:

- Well equipped teaching and conference rooms
- Quiet wi-fi work areas
- Computer suites
- Café bar, social areas, games room and members' lounge
- A range of FREE trips and social events
- Skills Workshops
- Drop-in sessions from Career Advisors
- A unique Global Leaders Programme
- Committed and supportive staff

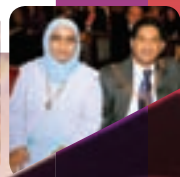
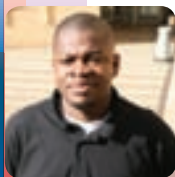
To find out more please visit: www.coventry.ac.uk/postgraduate

Scholarships and Discounts

Coventry University is delighted to welcome outstanding students to our courses. We understand that undertaking Higher Education overseas is a major financial decision, which is why we have a range of discounts and scholarships for international students who plan to study with us.

Scholarships and discounts available include full payment discount, merit scholarship scheme, alumni discounts and many more.

For the latest information on scholarships and discounts available visit: **www.coventry.ac.uk/international/scholarships**



How to Apply



Applying to Coventry is an easy and quick process and you will receive an initial decision within 48 hours. You can apply online or download an application form.

The International Office will need the following information in order to make a decision on your application:

- All academic transcripts
- Copies of degree/diploma certificates or work reference if employed
- One academic reference
- An English language test score (IELTS/TOEFL etc)
- Your personal statement
- Copy of your current passport



If you need any additional information or have any queries please email:

enquiries.io@coventry.ac.uk

or call

+44 (0)24 7615 2152

www.coventry.ac.uk/international



Visit our website:
www.coventry.ac.uk/international

or telephone
+44 (0)24 7615 2152

or email
enquiries.io@coventry.ac.uk

Coventry University
Priory Street
Coventry
CV1 5FB
United Kingdom