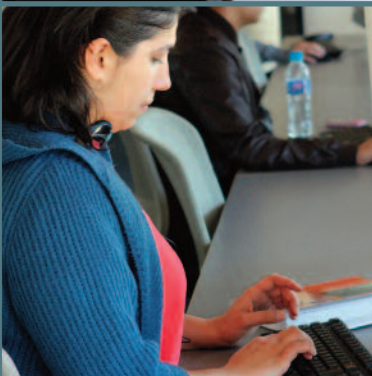




Student Accommodation

2012/2013



www.chi.ac.uk

Main Contacts

This brochure provides students information about the range of accommodation options available to them whilst studying at the University of Chichester. We hope it gives you all the details needed, however if you require any further information our Accommodation Team will be happy to assist.

Our contact details are:

University of Chichester
Bishop Otter Campus
College Lane
Chichester
West Sussex
PO19 6PE
Tel: 01243 816069
Fax: 01243 816068
E-mail: accommodation@chi.ac.uk

University of Chichester
Bognor Regis Campus
Upper Bognor Road
Bognor Regis
West Sussex
PO21 1HR
Tel: 01243 812120
Fax: 01243 812053
E-mail: accommodation@chi.ac.uk

Alternatively you can go to our website at www.chi.ac.uk/student-life/accommodation

Additional Contacts

Academic Registry
Admissions
Disability and Academic Skills Service
Financial Welfare
Students' Union
Student Advisor
Health and Safety

Tel: 01243 816027
Tel: 01243 816002
Tel: 01243 812076
Tel: 01243 816038
Tel: 01243 816394
Tel: 01243 816238
Tel: 01243 816488





Contents

Main Contacts	02
Additional Contacts	02
An Introduction to University Life	04
Our Guarantee	04
City of Chichester	06
Bognor Regis	07
Choosing Accommodation	08
University Owned-Accommodation	10-21
Applying for University Owned-Accommodation	22
Key Dates	23
Off-Campus Accommodation	25
Frequently asked questions	26-27
Table of Accommodation	28-29
Campus Maps	30-33
How to find us	34
Some points to consider	35
Disclaimer	35

An Introduction to University Life

Moving away from home for the first time can be a daunting experience and finding the right accommodation can help this process. At the University of Chichester there are many different types of accommodation to suit a range of needs.

Living in Halls of Residence is a popular experience. Being on campus makes it easier to meet other students and make new friends. You may find you meet people from other courses and develop good friendships within days of settling into your accommodation. To help this process there are many on-campus activities and events throughout the year which will give your social life a real boost! On campus everything is close at hand which helps minimise your travel expenses.

All our halls offer a safe and secure environment and there are security staff available throughout the night. If you choose to live on campus Residential Advisers will help you settle into your hall of residence. They are also available if you have any problems or want guidance or advice throughout the year, as are the Accommodation Office staff.

Choosing to live in University accommodation allows a certain amount of flexibility and freedom but there are certain rules that you will have to abide by. When you sign the Residential Licence Agreement you are agreeing to live by these rules and adhere to the Code of Conduct, which can be found in the Residential Handbook.

Our Guarantee

We are regularly updating and improving our accommodation to provide you with a well maintained, safe and secure environment to live in. All halls of residence accommodation are professionally managed and members of staff are available to give any help and guidance that you may require.

We have an Off-Campus Accommodation Officer who works closely with landlords in the private rental sector and who is able to offer guidance on matters such as; rent and repair queries, tenancy agreements, contracts, housing legislation and any other housing matters that may affect you.

Not only do the Accommodation Office co-ordinate all the Halls of Residence, but it also monitors and lists accredited off-campus housing. Many first years coming to Chichester like the option of staying with a family or renting a property, off-campus, as a group of students. This type of housing offers students freedom and a chance to ensure they develop a balanced university/social life. Housing lists are provided to students via our student pad website (www.studentpad.co.uk/chichester), which is constantly being updated with new houses.

Whatever your accommodation choice at the University of Chichester you will find a great atmosphere with a welcoming student community. We feel it is a great place to live and study and we are sure you will have many life long memories to take away with you at the end of your stay.





City of Chichester

The University is split over two campuses, the Bishop Otter Campus at Chichester and the Bognor Regis Campus. A shuttle bus runs a regular service between the campuses. Many students prefer to study at one campus whilst living at the other. Each campus has its own character but both are no more than a fifteen minute walk from the town centres and both are close to local parks, offering plenty of green space in which to relax or socialise.

Chichester is the county city of West Sussex. It is a bustling, thriving city with a great choice of shops, cafes, pubs, art galleries, museums, cinemas, a bowling alley and has a night club on its outskirts. North of Chichester are the South Downs and the sea is a short bike ride from the campus. On the coast there is something for everyone; the haven of Chichester Harbour; the wild, windswept beauty of East Head's sand dunes; the classic English seaside at Bognor Regis and the boho surfer vibe of the Witterings.

Chichester's fantastic restaurants and bars include well know chains such as Slug and Lettuce, Pizza Express, Weatherspoons and ASK and quaint, exclusive bars such as La Havana, Woodies and the Hope Inn. If you are looking for an alternative night out La Havana offers an open-mic night on Wednesdays and a live band night on Fridays. Thursday's nightclub is on the outskirts of the city and offers a bus service (for a nominal fee) to the club and (free) back to the town centre at the end of the evening. Tuesday nights are student night and they often have theme nights such as Wild West, Beach Party, etc. Chichester Gate is a leisure complex to the south of the city and provides a whole range of facilities and entertainment, including; a cinema, bowling alley, bars and restaurants. Our Stockbridge Hall of Residence is located next to Chichester Gate.

Chichester is home to one of the United Kingdom's flagship theatres, the Chichester Festival Theatre, which hosts a wide range of theatrical productions, from musicals and comedies to classic dramas. Along with the Chichester Festival Theatre, the city also boasts the Minerva Theatre, New Park Film Centre and a myriad of smaller arts centres. If you are interested in the arts there are plenty of places to visit such as the Chichester District Museum and the Pallant House Gallery, home to one of the best collections of 20th century British art in the country.

Chichester is also home to a variety of sports clubs. The Westgate Leisure Centre can be found to the west of the city with facilities including a swimming pool, a fitness suite, squash courts and aerobics studio.



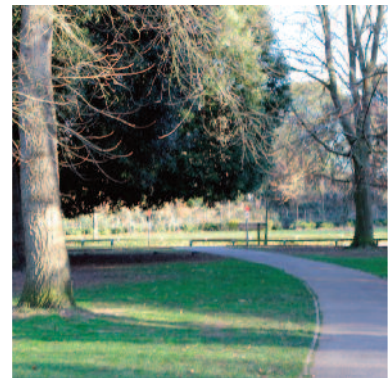
Bognor Regis

Award winning beaches make Bognor Regis one of the most popular seaside resorts on the south coast. The beach is popular with watersport enthusiasts and sun worshippers.

Located not far from the town centre, Hotham Park is where the creator of Bognor, Sir Richard Hotham, built his house in 1792. The house is surrounded by gardens and specimen trees from around the world. The grounds are open to the public and include a picnic area, play area, miniature railway, tennis courts, boating lake, putting green and rose garden.

HothamType equation here. Park offers relaxing walks among the trees and, during the summer, look out for live music and entertainment on the bandstand.

Bognor has a wide variety of pubs and restaurants all situated in the town centre and close to the University campus. There are many music venues and nightclubs in Bognor Regis such as Club Vision that are popular with students. Thursday is student night at Club Vision and they offer the biggest student party night in West Sussex. The town also offers museums, the Alexandra Theatre (which works closely with the University) and the Picturedrome Cinema. So if you fancy getting out and about, watching a play or catching a movie there is always plenty to do at Bognor Regis.





Choosing your Accommodation

At the University of Chichester we have many different types of accommodation that cater for all needs. All the rooms are well equipped and maintained. Internet connection is available in all rooms at no extra charge. For those with special housing needs a number of rooms on both campuses have been adapted to suit wheelchair users.

What is important to you?

Before you decide on the type of Accommodation you would like, you will need to consider what is important to you.

What campus will I be based at?

Do I want meals provided?

Do I want to have my own en-suite facilities?

How much can I afford each week?

How close do I want to be to the campus?

Please consider your preferred choices when looking through our accommodation information pages, these can also be found on our website at www.chi.ac.uk/student-life/accommodation

Allocation of On-Campus Accommodation

When you have considered your options and decided your preferences you will be asked for your 'package' choices if you are applying for on-campus or managed accommodation.

Undergraduates are to apply for accommodation between 24th May – 15th June - please note conditions apply. Although we will make every effort to accommodate your wishes this may not always be possible. All the accommodation is offered via a randomised allocation system and is very popular.

If we can not provide you with accommodation, or you prefer to stay in private accommodation, the Accommodation Office can help you find alternative housing. Information of off-campus accommodation can be found on the Accommodation Office webpages at www.chi.ac.uk/student-life/accommodation.

Catered or Self Catered

In catered on-campus accommodation you will be provided with breakfast and an evening meal, Monday to Friday, and brunch at weekends. Lunch can be purchased from the Dining Hall on weekdays. The menus are based on a four week rolling menu programme and we can cater for most special dietary requirements. During the Reading Weeks only brunch will be available and there will be no catering during the Christmas and Easter breaks. (This is taken into account with the cost of the accommodation.)

There are however communal kitchen facilities available in all halls, should you wish to use them at any time. In self catered accommodation you can cook for yourself in the communal kitchens.

Each kitchen is shared between no more than seven students. Each kitchen will have an electric cooker, microwave, fridge, freezer, kettle and toaster. No cooking and eating equipment/utensils are provided so you will need to bring your own or alternatively you can purchase a crockery pack from our Accommodation Office, if requested by 1 September.

Location

Most of our Accommodation is based on campus; however we have a few halls that are off campus. Havenstoke is a five minute walk from the Bishop Otter Campus. Pinewood is a 10 minute walk, the Graylingwell Drive houses are a 15 minute walk, Stockbridge, Mainline and 2 Bognor Regis are a 30 minute walk from the campus. St Christopher's is located in Fishbourne. You may wish to take this into account when making your choices. Please see maps at the back of this brochure to establish the locations of all the halls of residence.

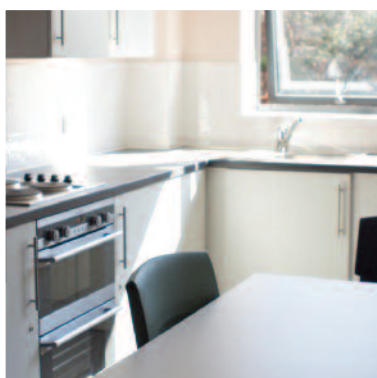
Quiet Block

Although many students enjoy the social aspect of University life, some may prefer to be allocated a room in a quiet block. If this is something that appeals to you we do have a range of different rooms that cater for this requirement at St Christopher's and Charlotte House at the Bognor Regis Campus.

Parking and Transport

At the University of Chichester we have a limited amount of parking spaces so if you live on campus you will not be able to park on site. If you are allocated accommodation that is near to campus (Havenstoke or Pinewood) or at some of our managed houses sites you will have the opportunity to apply for a designated parking space for the year, at an extra cost.

There is a bus service that runs a regular service between campuses for those who need to commute between the two sites and there are plenty of spaces for bicycles in our cycle stores.



Smoking

All our accommodation facilities are 'no-smoking zones'. If you wish to smoke you will be required to do so away from the buildings.

Students with a disability

We have a range of adapted rooms within our halls or residence. Most are single rooms with large ensuite wet rooms and are sold on a catered or self catered basis, dependant on an individual's requirements. We are happy to discuss special housing requirements with students who have individual requirements. We would encourage you to contact the Disability and Academic Skills Services Co-ordinator at an early stage so all can be done to allocate accommodation to suit your needs.

Icon Key:



Number of rooms



Disabled rooms available



Bus Service available



Bike Shed nearby



Internet access



Ensuite



Shared bathroom facilities



Catered



Self Catered



Suitable for Mature Students



Car parking available

Bognor Regis Campus

Catered Ensuite Facilities

Barbara Smith Halls

University of Chichester, Bognor Regis Campus, Upper Bognor Road,
Bognor Regis, West Sussex PO21 1HR

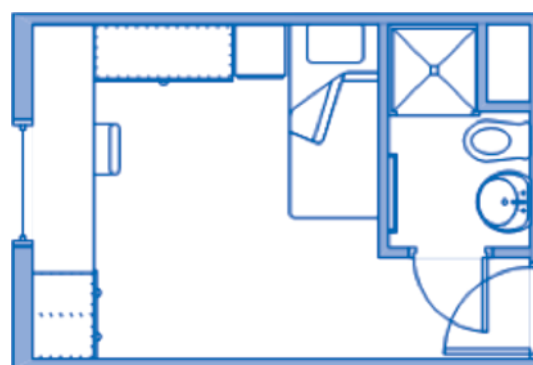


Contract Length: 37 Weeks and 40 Weeks

Cost Per Week: £155.05

Location: Bognor Regis Campus

Facilities: These rooms are all single study rooms with an ensuite shower, WC and basin. There are a range of flat sizes from 2 to 6 people, with a shared kitchen. Located on the Bognor Regis Campus the halls are in close proximity to all the University facilities and have easy access to the University inter site bus. All flats are rented on a catered basis.



Indicative room layout (not to scale)

Bognor Regis Campus

Catered Shared Facilities

Longbrook and Charlotte House (Quiet block)

University of Chichester, Bognor Regis Campus, Upper Bognor Road,
Bognor Regis, West Sussex PO21 1HR

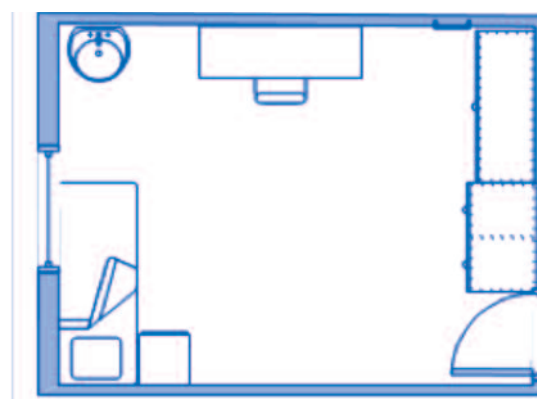


Contract Length: 37 Weeks And 40 Weeks

Cost Per Week: £136.85 (Single Room)
£116.41 (Twin Room)

Location: Bognor Regis Campus

Facilities: Longbrook offers the option of single or twin rooms on a catered basis with shared bathroom facilities. Each room has a wash hand basin. Charlotte House is a quiet block for those who prefer the quiet life. All are rented on a catered basis, with shared bathroom facilities between six people.



Indicative room layout (not to scale)

Bishop Otter Campus

Catered Ensuite Facilities

**Bishop Durnford, Bishop Gilbert, Bishop Neville, Bishop Sherburne,
Bishop Kemp 1-4, Bishop Hilary**

University of Chichester, Bishop Otter Campus, College Lane, Chichester, West Sussex PO19 6PE

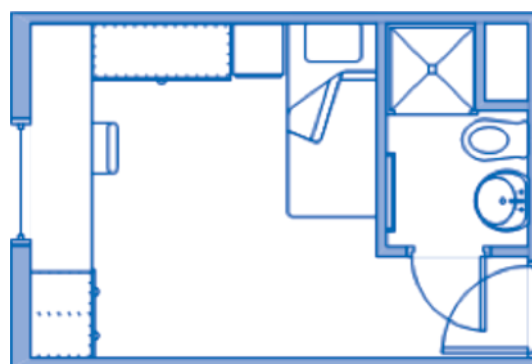


Contract Length: 37 Weeks

Cost Per Week: £155.05

Location: Bishop Otter Campus

Facilities: All these rooms are single study rooms with an ensuite shower room. Located on the Bishop Otter Campus, all are very close to the University facilities. These halls are rented on a catered basis.



Indicative room layout (not to scale)

Bishop Otter Campus

Catered Shared Facilities

Springfields 1-6, Hammond 1 and 2

University of Chichester, Bishop Otter Campus, College Lane, Chichester, West Sussex PO19 6PE

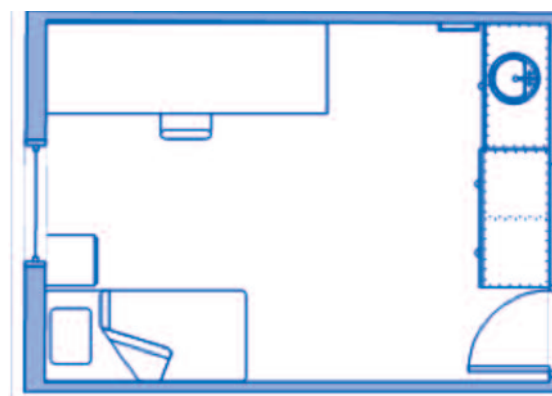


Contract Length: 37 Weeks

Cost Per Week: £136.85

Location: Bishop Otter Campus

Facilities: All these rooms are single study rooms with shared bathroom facilities. These rooms are available on a catered basis but do have shared kitchen facilities. All facilities are shared with six other students.



Indicative room layout (not to scale)

Bishop Otter Campus

Self-Catered, Ensuite Facilities

Bishop Story, Bishop Andrewes, Bishop Wilfrid

University of Chichester, Bishop Otter Campus, College Lane, Chichester, West Sussex PO19 6PE



Contract Length: 37 Weeks

Cost Per Week: £121.62

Location: Bishop Otter Campus

Facilities: These rooms are all single study bedrooms with en-suite shower facilities. All rooms have internet access. Kitchens include oven, hob, microwave and fridge-freezer and are shared between four people. The bedrooms are rented on a self-catered basis..



Indicative room layout (not to scale)

Bishop Otter Campus (off campus)

Self-Catered, Shared Facilities

Pinewood House

Answorth Close, Chichester, West Sussex PO19 6YS

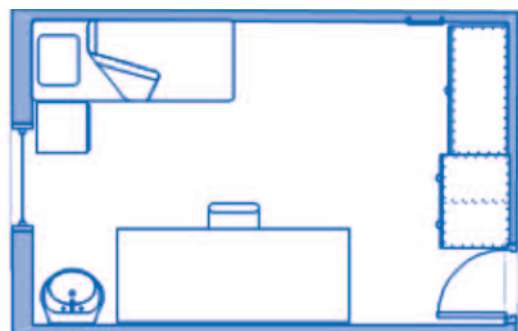


Contract Length: 37 Weeks

Cost Per Week: £91.00

Location: Off Campus, near to Bishop Otter Campus (10 Minutes Walk)

Facilities: All these rooms are single study rooms with a wash hand basin in the room. Bathroom and kitchen facilities are shared between six people. Pinewood House is short 10 minute walk from campus. A parking permit for Pinewood House can be obtained if required. The rooms are rented on a self-catered basis.



Indicative room layout (not to scale)

Bishop Otter Campus

Self-Catered, Shared Facilities

Havenstoke Close

Connolly Way, Chichester, West Sussex PO19 6RR

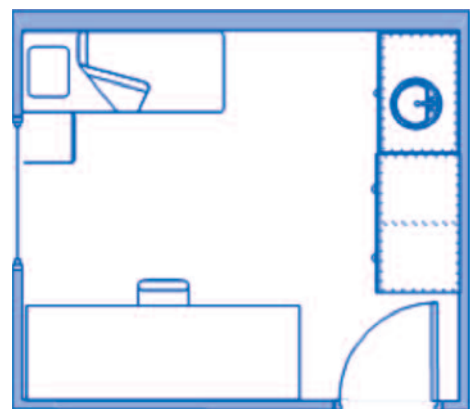


Contract Length: 37 Weeks

Cost Per Week: £105.63

Location: Bishop Otter Campus

Facilities: All these rooms are single study rooms with shared bathroom and kitchen facilities. They are set out as separate houses in a close with four people per house. A parking permit for Havenstoke Close can be obtained if required. The rooms are rented on a self catered basis.



Indicative room layout (not to scale)

Off Campus

Self Catered, Ensuite

Stockbridge

Chichester Gate, Chichester, West Sussex



Contract Length: 40 Weeks

Cost Per Week: £128.00

Location: Off Campus (25 minute walk from the Bishop Otter Campus)

Facilities: Stockbridge is a brand new development of 104 self-catered, ensuite rooms. The rooms are divided into flats with 5, 6 or 7 bedrooms and each flat contains a shared kitchen. There is a communal lounge area with a plasma TV for students who wish to socialise. The development is situated next to The Chichester Gate complex where there are many leisure activities such as a cinema, bowling alley, bars and restaurants. The standard contract length is 40 weeks however; there are opportunities for students to extend their Licence Agreement into the summer period.

VARIOUS ROOM
LAYOUTS

Managed Houses (off campus)

Self Catered, Shared Facilities or Ensuite

St Christopher's (Quiet Block)

2-19 St Christopher's Close, 32-34 Fishbourne Road East, Chichester, PO19 3RD

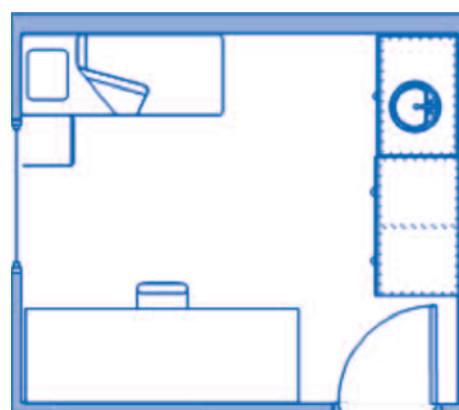


Contract Length: 40 Weeks

Cost Per Week: £128.80

Location: Off Campus, 2.5 miles outside of Chichester.

Facilities: St Christopher's is a block of 68 bedrooms located 2.5 miles from Bishop Otter Campus. There are good transport links with a train station nearby and the University Bus provides a regular service that stops nearby. Alternatively there are limited parking spaces available on a first come first served basis for an additional cost. Please contact the Accommodation Office for further details. All rooms are single rooms with shared facilities on a self-catered basis. Please note: this is a quiet property and there is a restrictive user clause in operation at this property.



Indicative room layout (not to scale)

Managed Houses (off campus)

Self Catered, Shared Facilities or Ensuite

The Mainline

The Mainline, Whyke Road, Chichester, West Sussex, PO19 7AW



Contract Length: 40 Weeks

Cost Per Week: £128.80

Location: Off Campus (30 minute walk from the Bishop Otter Campus)

Facilities: Mainline is a block of 19 bedrooms which are split into 4 flats over 2 floors. Each flat has 4/5 students sharing kitchen and bathroom facilities. There is a limited number of off-road allocated parking spaces for this property for an additional cost. Please contact the Accommodation Office for further details.

VARIOUS ROOM
LAYOUTS

Managed Houses (off campus)

Self-Catered, Ensuite or Shared Facilities

2 Bognor Road

2 Bognor Road, Chichester, West Sussex, PO19 7TF

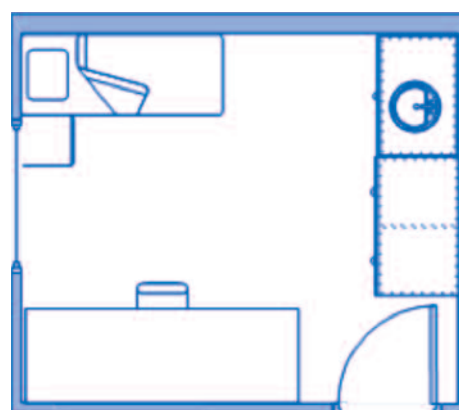


Contract Length: 40 Weeks

Cost Per Week: £128.80

Location: Off Campus (25 minute walk from the Bishop Otter Campus)

Facilities: 2 Bognor Road is a 5 bedroom bungalow near to the centre of Chichester. The property has shared bathroom and kitchen facilities. There are limited parking spaces available on a first come first served basis for an additional cost. Please contact the Accommodation Office for further details. The permit is not valid for parking on campus.



Indicative room layout (not to scale)

Managed Houses (off campus)

Self-Catered, Ensuite & Shared Facilities

Graylingwell Drive

Chichester, West Sussex PO19 6AN



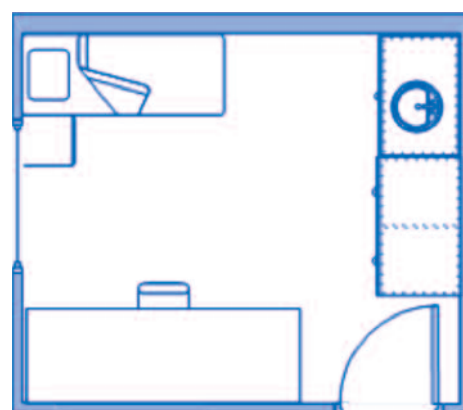
Contract Length: 40 Weeks

Cost Per Week: £117.25 (Self-catered, shared facilities)
£128.80 (Self-catered, large room, shared facilities)
£141.26 (Self-catered, ensuite)

Location: Off Campus (15 Minutes Walk)

Facilities:

The Graylingwell Drive houses have a variety of rooms available. All are self-catered and some have ensuite and some shared washing facilities. The houses are based on a residential estate and students are asked to keep this in mind. The houses are 15 minutes walk from the campus. Parking is available for an additional cost and is on a first come, first served basis. Students must not park on the road. Unlike the majority of on-site residences, the internet provision in Graylingwell Drive is a shared service provided by wireless broadband.



Indicative room layout (not to scale)

Applying for University-owned Accommodation

If you are a UK, full-time student, with no special housing needs, whose home address is outside certain post code areas, you will be able to apply for University owned accommodation from between 24th May - 15th June. (Please view the Allocation Policy on the Accommodation website for full details.) You must have made the University of Chichester your first choice and have accepted a firm offer before applying for University Owned and Managed Accommodation.

You must apply for your accommodation on-line through the Admissions Portal on the website 24th May - 15th June. You will need your log in details for this. (Your details should be your student number and date of birth.) Once you have filled out the application form you will be notified via email by 1st August if you have been successful in gaining a place in accommodation. Your £100 booking fee must be received within seven days of receiving your offer letter and is payable online.

Once all applications have been received the accommodation will be allocated by a randomised allocation system i.e. in-line with the Allocations Policy. Please note, it is unlikely we will be able to offer all applicants a place in University owned accommodation due to the high demand for this provision so please bear this in mind

Once accommodation has been allocated we will email an offer letter and e-induction, which will include arrival details, by 1st September. You will receive a Residents' Handbook that you must read carefully before arrival. On arrival you will be required to collect your keys and check the room's inventory before occupation.

Key Dates

1st April

Students with Disability or Special Housing Needs

Any student with a disability or special need will have to apply for on-campus accommodation through the Disability and Academic Skill Co-ordinator by 1st April to be guaranteed a room. Please note this will be subject to an assessment and evidence may need to be provided.

24th May – 15th June

First year, Full Time, Home Students

The Admissions Portal opens for applications for on-campus accommodation to all first year, full time, UK based students that have made University of Chichester their first choice. (If the system crashes on 15th June, emails will be accepted and should be sent to accommodation@chi.ac.uk).

1st August

International Students

This is the deadline for all International Students to apply for on-campus accommodation. You will need to make sure you have submitted your application form and paid your non-refundable booking fee within 7 days of receipt of your offer to be guaranteed on campus accommodation.

1st September

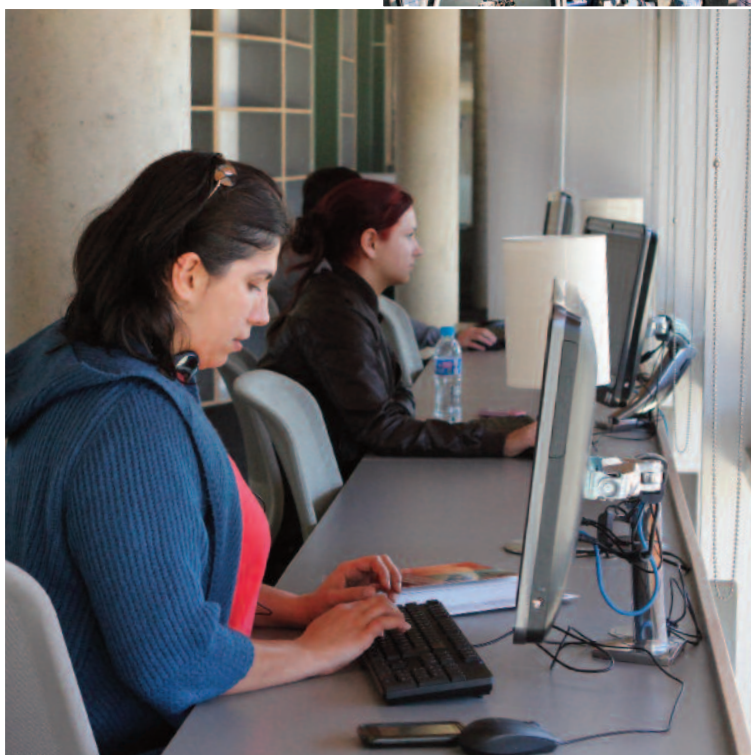
Successful Applicants

If the applicant has been successful, an offer of on-campus accommodation will have been made by this date, providing the student has met the conditions for study, and has returned an application for University-owned accommodation and paid their booking fee.

Mid September

On-campus rooms ready to occupy

All on-campus rooms will be ready for occupation for first year's start of term date. Information regarding Arrivals Day will be sent to you via e-mail, if you are successful in obtaining a room on-campus, one week in advance of your arrival





Off Campus Accommodation

As an alternative to living on-campus you may wish to consider the off campus accommodation available. Chichester, Bognor Regis and the surrounding area has a large number of properties and housing suitable for students. These include Private Rented, Homestay and Private Home Accommodation.

Private Rented Accommodation is a property rented from a Landlord. Usually a group of students or friends get together and rent a property (or a room in a property). You can search for available properties via our Studentpad website (www.studentpad.co.uk/chichester). If you register with Studentpad then you will receive regular e-mail updates on any new properties that become available. All the properties advertised have been inspected by a member of the Accommodation Team.

Private Home Accommodation is similar to lodging; you will rent a room in a local landlord's property. This may be worth considering as there are several advantages. The rent is generally cheaper and bills are often included in the rent. Owner occupied properties are generally kept in better repair than rented properties. You do not have to commit yourself to a long-term contract, often you can arrange to stay for as little as two weeks. This means if things are not working out then you can end the arrangement fairly painlessly. There is no such thing as a typical resident

landlord. Some are young professionals or recent graduates, others are middle aged couples and some are retired. Although most students' first preference would probably be to share with other students, it is worth considering the advantages of this arrangement.

Homestay landlords are resident landlords, often with children and/or pets, offering accommodation inclusive of meals and the opportunity to live as part of their family. It is a very popular option with International students who may be looking to improve their language skills. Occasionally you may be asked to pay a deposit when renting a room and many hosts will require a retainer fee or full rental fee if you are away on holiday but still wish to retain the room.

If you require any help or advice when looking for off campus accommodation you can contact our Accommodation Office or look on the Studentpad website. The team can offer information on what to look for in a property, housing costs and tenancy law. A checklist can also be printed off as a guide on what to look for when visiting properties. There is also a student message board which allows you to contact other University of Chichester students to look for potential sharers or if you have a vacancy in your property to advertise.



Frequently Asked Questions

Question

When can I apply for accommodation as a UK student? (for all other students please see Allocation Policy on the Accommodation Office website)

Answer

You will be able to apply for your accommodation between 24th May – 15th June. You will need to do this on-line via the Admissions Portal.

Question

When will I find out if I have been allocated on-campus accommodation?

Answer

You will be advised, via e-mail, of the accommodation you have been offered by 1st September.

Question

Do I need a TV licence?

Answer

Yes you will need to purchase your own TV licence if you are planning on bringing a television.

Question

How many people are the facilities shared between?

Answer

All shared facilities will be shared between no more than seven people. In some of the blocks you may only be sharing with four other people.

Question

Can I have guests to stay?

Answer

You can have a guest to stay for no more than two nights at no cost.

Question

Can I bring a car?

Answer

Due to lack of parking facilities we are unable to offer parking to students living on campus. If you are allocated accommodation off campus you may be able to purchase a designated parking permit.

Question

When are the meals served in catered halls?

Answer

For catered halls the meal times are as follows:

Bishop Otter Campus

Breakfast: Monday - Friday, 8.00am to 9.30am

Evening Meal: Monday - Friday, 5.15pm to 6.30pm

Brunch: Saturday - Sunday, 10.30am to 12.00 noon

Bognor Regis Campus

Breakfast: Monday - Friday, 7.00am to 9.00am

Evening Meal: Monday - Friday, 5.15pm to 6.45pm

Brunch: Saturday - Sunday, 10.30am to 12.00noon

Question

Can I leave my accommodation early?

Answer

If you wish to leave your accommodation early you will need to advise the Accommodation Office of your intention to leave in writing and you will be responsible for the rent for the entire licence agreement, unless a suitable replacement is found.

Question

Will I have internet access in my room?

Answer

All our rooms come with internet access at no additional cost; however our accommodation that is off campus has a wireless connection which is slower than the on-campus service. Further details are available in the 'handbook for residents'. residents'.

Question

What do I need to bring?

Answer

Bedding and towels and all the basic equipment to get you started on your first time living away from home. This will include items such as; crockery, cutlery, saucepans, cooking utensils etc.



Question

When are the accommodation fees due?

Answer

The Accommodation fees are divided into three equal installments, the first being due on arrival, the second in January and the third in April.

Question

Can I stay in the accommodation during the vacation periods?

Answer

Yes you will be able to stay in your room during all vacation periods until the end of your licence agreement; this will include Christmas and Easter. Please bear in mind that there will be no catering at Christmas, Easter and Bank Holidays and brunch is served during Reading Weeks and at weekends.

Question

Will I be charged if I cancel my accommodation before I arrive?

Answer

If you cancel your accommodation before you arrive you will need to let the Accommodation Office know, either in writing or by e-mail before the beginning of the academic year. You will only be refunded your £100 booking fee if you do not meet entry requirements to study at the University of Chichester.

Question

Is there a launderette available?

Answer

All rooms have access to a launderette nearby or within the facility

Question

Are there bicycle storages available?

Answer

Bicycle stores are available on both campuses.

Question

What is expected of me?

Answer

Students are required to pay promptly and adhere to the Code of Conduct and terms of their Licence Agreement.

Question

Have I assurance the facilities will be suitably maintained?

Answer

Yes. All University accommodation facilities comply with the ANUK Code of Practice, which is a nationally recognised accommodation accreditation scheme.

Question

What if I damage the room/equipment?

Answer

You will be charged to repair any damage caused maliciously and possibly accidentally, including an administration fee. You could also possibly face disciplinary procedures.

Question

Are staff available 24 hours a day?

Answer

Yes, the Accommodation Office and/or security staff are available 24 hours a day during the licence agreement period.

Question

Are there re-cycling facilities?

Answer

Yes. There are re-cycling facilities and students are inducted in how to recycle as much waste as possible.

Table Of Accommodation

Below is an overview of all the accommodation options we have to offer at University of Chichester. You can use this as a quick reference guide when looking at all the accommodation. If you interested in Private Rented Housing, off campus, the weekly rental charges are like to be approximately £70 - £75 excluding all bills and with host families (i.e. Homestay) £90 - £100 per week inclusive of bills and food.

Bishop Otter Campus

Hall Name	Licence Period	Self Catered	Catered	Ensuite	Shared Facilities	Parking Available	Price per Week
Bishop Bell	37		•		•		£146.85
Bishop Andrewes	37	•		•			£121.62
Bishop Story	37	•		•			£121.62
Bishop Wilfrid	37	•		•			£121.62
Durnford	37		•	•			£155.05
Gilbert	37		•	•			£155.05
Graylingwell Drive	40	• • •		•	• •		£117.25 £141.26 £128.80
Hammond	37		•		•		£136.85
Havenstoke Close	37	•			•	•	£105.63
Hilary	37		•	•			£155.05
Kemp	37		•	•			£155.05
Neville	37		•	•			£155.05
Pinewood House	37	•			•	•	£91.00
Sherburne	37		•	•			£155.05
Springfield	37		•		•		£136.85
Stockbridge	40	•		•			£128.00
St Christopher's	40	•			•	•	£128.80
Mainline	40	•			•	•	£128.80
2 Bognor Road	40	•			•		£128.80



Bognor Regis Campus

Hall Name	Licence Period	Self Catered	Catered	Ensuite	Shared Facilities	Parking Available	Price per Week
Barbara Smith Halls	37 40		• •	• •			£155.05 £155.05
Longbrook Single Twin	37 37		• •		• •		£136.85 £116.41
Charlotte House	40		•		•		£136.85
Pavilion	37	•			•		£105.63

Bishop Otter Campus, Chichester

Our Bishop Otter Campus is easily accessible by both road and rail. If you are travelling to Chichester by rail via London, direct trains run from Victoria station. Alternatively, you can travel from Waterloo to Havant and change there for Chichester.

See map
www.chi.ac.uk/about-us/support-and-information-zone/directions-chichester-campus

Car parking

Car parking between 8.00am and 5.00pm for non-residents, Monday to Friday, during the University's core teaching year, is restricted to vehicles displaying a valid student, staff or visitor's parking permit. There is a charge for overnight parking, for which a permit is required.

Map key

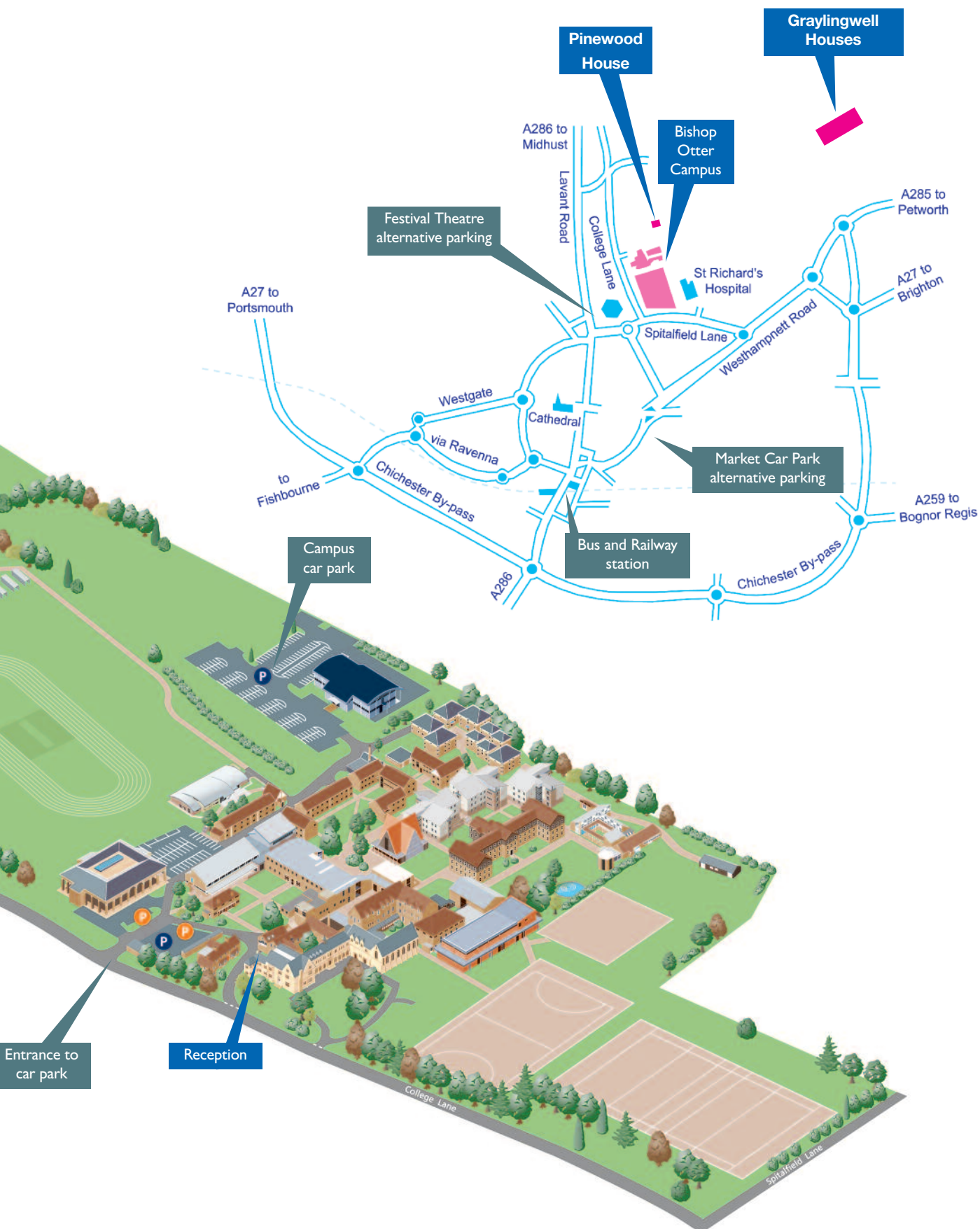
-  On-campus Disabled parking
-  On-campus parking



Pinewood Halls of Residence
(North of Campus)



Havenstoke Close Halls of Residence



Bognor Regis Campus

Our Bognor Regis Campus is easily accessible by both road and rail. If you are travelling to Bognor Regis via London, the trains run from Victoria station. It is sometimes necessary to change trains at Barnham station for Bognor Regis. Please check this before travelling.



See map

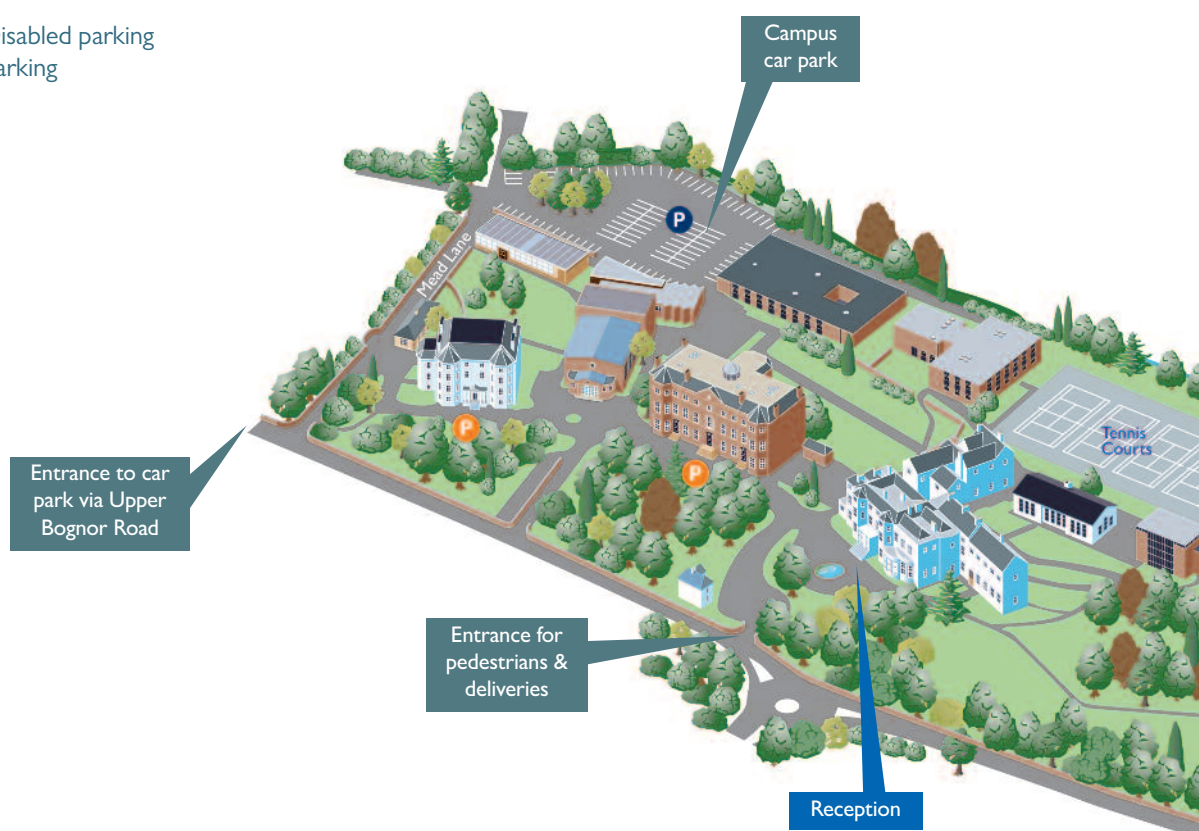
www.chi.ac.uk/about-us/support-and-information-zone/directions-bognor-regis-campus

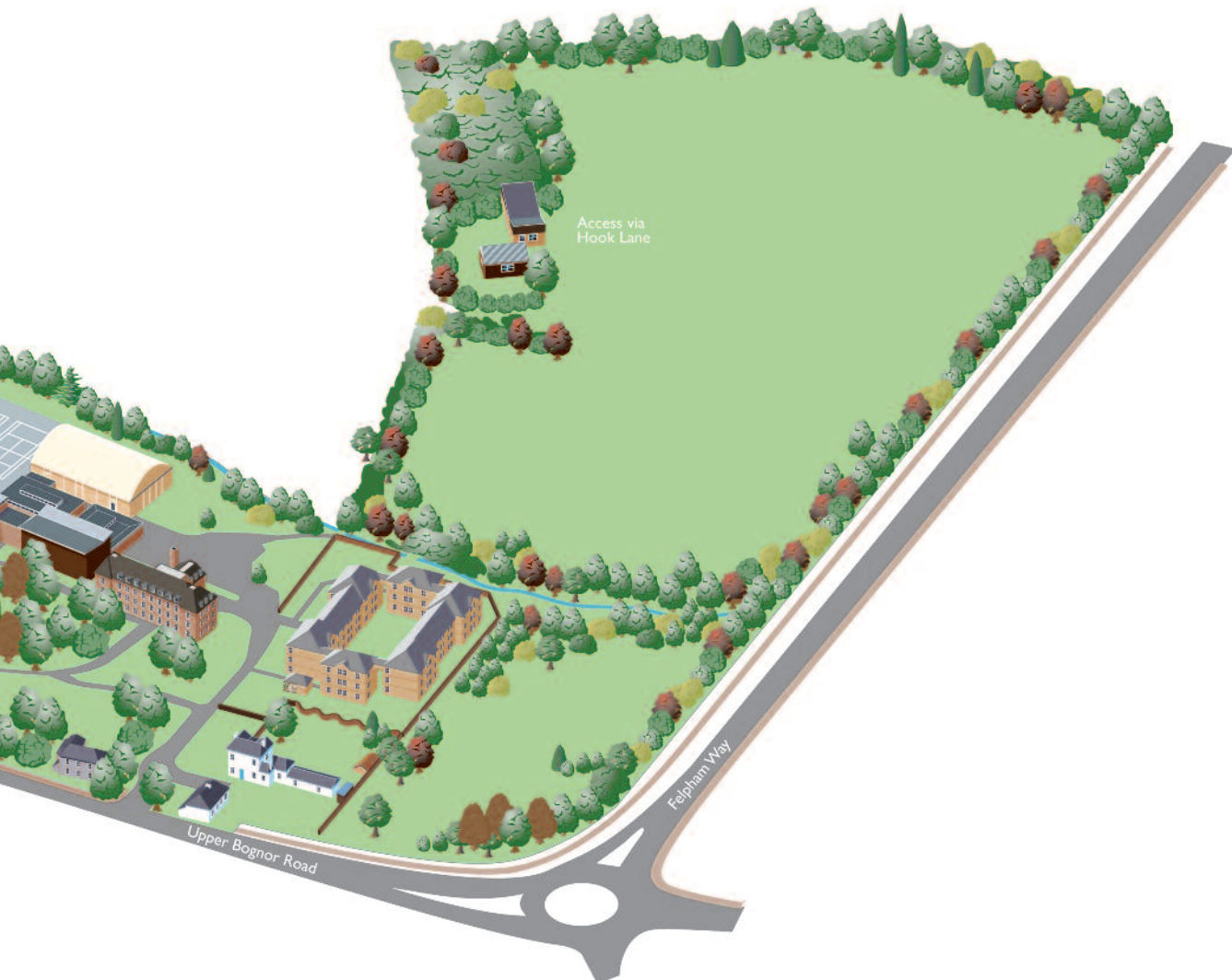
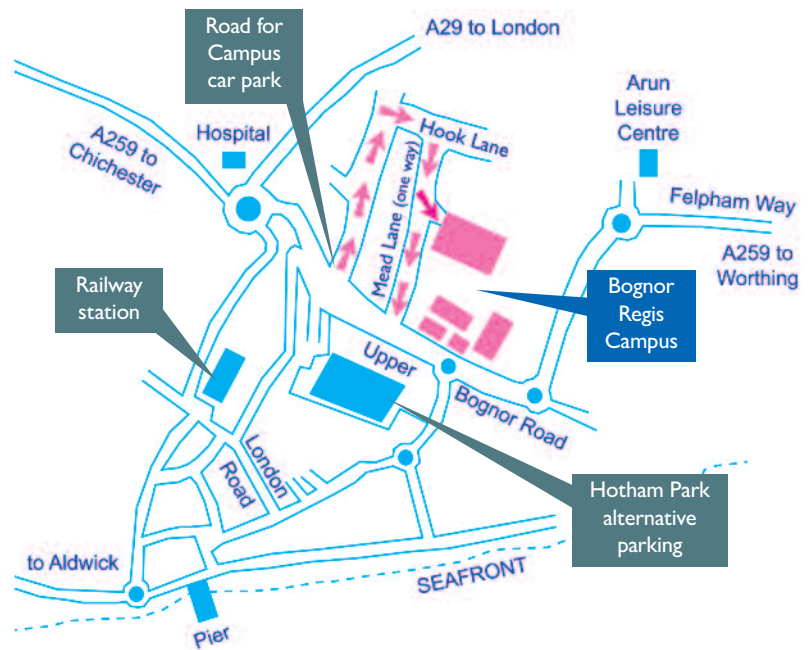
Car parking

Car parking between 8.00am and 5.00pm, for non-residents, Monday to Friday, during the University's core teaching year, is restricted to vehicles displaying a valid student, staff or visitor's parking permit. There is a charge for overnight parking, for which a permit is required.

Map key

-  On-campus Disabled parking
-  On-campus parking





How to find us

West Sussex

The University's two campuses in Chichester and Bognor Regis are both located on the South Coast of West Sussex. Located between Portsmouth and Brighton, they have excellent road and rail links to London.

Travelling by train to Bognor Regis

If you are travelling to Bognor Regis via London, the trains run from Victoria station. It is sometimes necessary to change trains at Barnham station for Bognor Regis, please check this before travelling.

Travelling by train to Chichester

If you are travelling to Chichester via London, the trains run from Victoria station. Alternatively, you can travel from Waterloo to Havant and change there for Chichester.



Some points to consider

- On your arrival you will be asked to sign a room inventory and your room will be checked against this information on your departure.
- Please note that if you are unsuccessful in attaining the necessary grades for entry to the University of Chichester a full refund will be given.
- Basic insurance cover is included in the cost of your room.
- Please be aware that the Residential Licence Agreement you sign when you take up University accommodation is a legally binding contract.
- Although we have twin rooms for couples on our Bognor Regis campus, where both parties are studying with us, unfortunately, we do not provide rooms for spouses, partners or family members.



Disclaimer

The information contained in this brochure should be used as a guide only and maybe subject to change. Whilst the University makes every effort to check the accuracy of the content at the time of drafting, some changes may have occurred after publication. We would strongly recommend that you also check our website at www.chi.ac.uk/student-life/accommodation where information will be regularly updated or contact our Accommodation Office for further information and advice.



