




# Annual Report 2010/11



President of the Incorporated  
Society of Musicians  
PROFESSOR PAUL EDLIN

President of the  
Historical Association  
PROFESSOR JACKIE EALES

Early Career  
Award Winner  
DR MASI NOOR

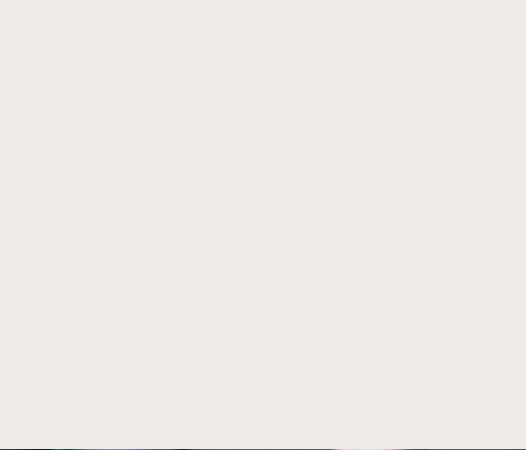
International Achievement  
Award Winner  
PROFESSOR JAN DEWING

Students' Union  
President  
SILVIA RASCA

Rare Rising Star Award Winner  
STEPHAN EYESON



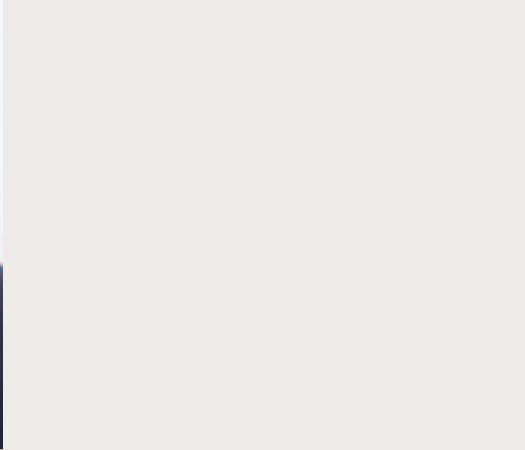
OVER 50% OF OUR GRADUATES STAY IN KENT AND MEDWAY TO WORK, REINVESTING THEIR SKILLS, KNOWLEDGE AND INCOME BACK INTO THE LOCAL ECONOMY



OUR TEACHER EDUCATION AND TEACH FIRST PROVISION ARE GRADED 'OUTSTANDING' BY OFSTED

WE EMPLOY 1,800 LOCAL PEOPLE  
... AND HAVE HELPED TO CREATE NEARLY 1,700 FULL-TIME ADDITIONAL JOBS OUTSIDE THE UNIVERSITY – THE MAJORITY IN THE SOUTH EAST





WE ARE IN THE SUNDAY TIMES TOP 10 FOR STUDENT EMPLOYABILITY (UNIVERSITY GUIDE 2012)

© Keith Saunders



PRO-CHANCELLOR'S FOREWORD ..... 2

VICE-CHANCELLOR'S INTRODUCTION ..... 3

CONTRIBUTION TO THE ECONOMY ..... 5

STUDENT EMPLOYABILITY ..... 11

EXCELLENCE ..... 15

    People ..... 18

    Teaching ..... 20

    Research ..... 22

    Partnerships ..... 24

ACCOUNTS AND STATISTICS ..... 28

PEOPLE ..... 30

IN CHOOSING TO STUDY LOCALLY, STUDENTS FROM THE SOUTH EAST PUT £109 MILLION BACK INTO THE LOCAL ECONOMY

Images feature our staff, students and graduates



2,012 JOBS WERE CREATED IN THE SOUTH EAST AS A RESULT OF CANTERBURY CHRIST CHURCH UNIVERSITY STUDENT SPENDING POWER



# Pro-Chancellor's foreword



During the past year, higher education has seldom been out of the headlines. Student fees, the way institutions are funded and questions about the very purpose and nature of higher education have been debated in Parliament, in the media, in the common room and amongst prospective students and their families.

At Canterbury Christ Church University we have taken the view that the new environment provides not just challenges but also opportunities to do what we always strive to do – make a difference in the world.

In this Report you will see how we have engaged in teaching and research that enables people to have enriched and fulfilled lives. We have worked with partners so that the immense knowledge and skill of our staff have been used to address complex and varied issues. We have confronted the challenges of reform and have engaged in an ongoing strategic planning process which takes account of people's views across the University and from the partners we serve. We also have a clear set of values emanating from our Church of England foundation.

In my two years as Pro-Chancellor and my 12 years as a governor, I have witnessed how Christ Church students have been encouraged to become critical thinkers who are equipped with the knowledge and skills to seize career and life opportunities.

The fact that we have an outstanding record for student employment says much about the University's focus on preparing students for the world of work.

Any annual report takes a backward look at what has been achieved and will inevitably contain facts and figures. From those you will see that we move forward in financial good health, with sound infrastructure and with the ambition to succeed in the face of remaining uncertainties in the world of higher education. I place on record my thanks for the commitment of the Vice-Chancellor and the hard work of all members of staff. In conclusion, I thank my fellow governors for their many unpaid hours of work, which is essential in ensuring sound governance.

We look forward to the next year!

**Peter Hermitage QPM**

# Vice-Chancellor's introduction



In writing this introduction to the University's 2010/11 Annual Report, I feel particularly proud as the period it reflects covers my first year at Christ Church.

Reading the Report brings afresh memories of the warm welcome and support I received from colleagues throughout the institution and from representatives of all the communities we serve as I sought, in my first few weeks and months, to learn better what Christ Church stands for, what it does, how it does it, and the difference it makes.

As the Report shows, the difference it makes is remarkable.

Whether one looks at the University's economic impact on the region (£450 million according to a recent independent study), the opportunities it provides for its students in terms of employment (the third best among English universities), the quality of its education (its consistently outstanding ratings from Ofsted), the excellence of its research and its applications to issues of public need or its cultural offering to our county and region, the picture is of a dynamic, purposeful and effective University. And with a financial outturn of £119 million, 2010/11 was a year of outstanding financial performance.

But the question of what Christ Church stands for is at least as important. I was fortunate in my first year because an early priority was the development of the University Strategic Plan for the period 2011-15 and that enabled me to meet with hundreds of colleagues and stakeholders in order to understand and help to express anew the University's values and ambitions.

What became very clear through that exercise is that this University, while

thriving in a competitive environment and subject to all the rigours of business, is first and foremost a community – a community of learning, a community of compassion. Deeply imbued with values that draw on its Church of England foundation, Christ Church believes in the power of higher education to transform individuals, communities, society and the economy.

The stories in our Report bring alive that belief and show it in action.

I would like to conclude this introduction with some words of thanks: to our Chancellor, the Most Reverend and Right Honourable Dr Rowan Williams, for his great support for Christ Church and his kindness to me; to our Pro-Chancellor, Peter Hermitage, for his immense commitment and tireless energy on behalf of the University and his wise advice; to all members of the University's Governing Body for the time they give, and the vast talent and experience they bring to their role; to my predecessor, Professor Michael Wright, for handing on an institution in great shape and good heart; to my Senior Management colleagues for their skill and support and for making my job immeasurably more manageable; to the Student Union sabbatical officers for their hard work on behalf of our students; to our many partners and stakeholders for the warmth of the welcome they have extended to me and their vision and enthusiasm for our joint endeavours; and most of all to my colleagues throughout the University for their professionalism, generosity and the wealth of innovative ideas they generate.

I hope you enjoy reading our Report.

Professor Robin Baker CMG

# 01



Our students make a significant impact on the South East economy



# 01 CONTRIBUTION TO THE ECONOMY

“Kent finds itself in a dramatically changed national policy setting and global economic climate. It is in this context that we must guard the interests of our county’s people and businesses for today and ensure that we are all in the best possible position to take advantage of future opportunities.”

“The current crisis provides a rare opportunity to see that the old solutions no longer work. In the future, the strongest societies will go hand in hand with successful economies and these will be founded upon knowledge that is co-created by higher education institutions, businesses, the public sector and the talent of our people.”

“Canterbury Christ Church has an important role to play in creating this burgeoning economy and the outstanding employment record of its graduates demonstrates its ongoing, significant impact in Kent and Medway.”

Alex King MBE, Deputy Leader, Kent County Council



### The value of higher education to society has never been greater.

The UK has witnessed the ripples of global economic instability and in the last year all sectors – private, public and voluntary – have been affected.

Kent and Medway have been no exception.

News that one of Kent’s largest employers, Pfizer, is moving out of the region, together with funding cuts to many of our public services over the last year, has presented the county with its own challenges.

However, there is a common and united focus for us all: to ensure Kent and Medway remains a vibrant, successful area with a diverse mix of employment, skills and social opportunities.

Canterbury Christ Church University is central to this collective ambition, providing essential education, training and skills to public services and businesses in the South East and beyond.

In particular, as the largest provider in the South East (outside London) of higher education courses for the public services, we have a special role

in supporting our health services, schools and colleges, the police service and local authorities.

This role is magnified in times of challenging budgets and scrutiny, and our University is at the forefront of ensuring these services benefit from graduates with the latest skills, research with insight and impact, and above all higher education which can transform individuals, communities, society and the economy.





## Our students' impact

Our students come from around the world, but two thirds are from here in Kent and Medway. In fact, we are the number one choice for local people who are looking to study at university in Kent\* as more and more students see the value in studying, living and working locally.

Our 20,000\*\* students bring so much to our county, with their developing skills and outstanding contribution to the arts, culture and the community. In the last year alone, 200 of our student volunteers contributed **15,000 hours** to community work. But they also make a significant contribution to the county's economy **each year**, injecting millions of pounds into our communities and helping to maintain thousands of jobs:

- > Canterbury Christ Church students spend **£170 million** outside the University
- > In choosing to study locally, our students from the South East put **£109 million** back into the local economy
- > Our international students spend **£11.1 million** off campus
- > **2,012 jobs** were created in the South East as a result of our students' spending power
- > **Over 50%** of our graduates stay in Kent and Medway to work, reinvesting their skills, knowledge and income back into the local economy.\*\*\*

\* 60% of all Kent-domiciled students looking to study in Kent applied to Canterbury Christ Church University (based on 2010 UCAS figures)

\*\* Includes students not reported in the HESA Student Record

\*\*\* 1,150 out of 2,165 of our known and available UK-domiciled undergraduates found employment in Kent and Medway (according to the Destination of Leavers from Higher Education survey 2009-2010)



## The University's impact

We are first and foremost a centre for higher education, encouraging innovation and creativity by integrating teaching excellence and high quality research. But over the years, we have also established ourselves as a significant employer and business in the South East. Together with student expenditure, we make a big impression on the South East economy, creating new jobs, business and trade both regionally and in the UK.

As an international organisation, we are also helping to unlock the county's potential as a visitor and cultural destination, attracting students, their parents, families and friends, from across the world. A recent independent analysis of our economic impact in 2009/10 shows that:

- > We make a **£450 million** impact on the South East economy
- > We employ **1,800** local people
- > ...and have helped to create nearly **1,700** full-time additional jobs outside the University – the majority in the South East.\*

This combined impact of student and University expenditure means that we continue to play a crucial role in the local economy and that higher education is vital to our region's prosperity.

\* Statistics taken from "The Economic Impact of Canterbury Christ Church University", 2009/10, Ursula Kelly and Iain McNicoll, Viewforth Consulting (August 2011)



> THE UK'S FIRST SUCCESSFUL GRADUATES IN SHARED SERVICES

## Sharing the latest expertise

In July, the UK's first group of public sector leaders and managers completed their postgraduate qualification in Shared Services.

The six month postgraduate course was designed and delivered following a partnership between Dr Wim van Vuuren, Programme Director in our Business School, and Shared Service Architects. Over 200 councils in England have put councillors and senior managers through the Shared Services course.

The course explores how shared services can be developed using in-house resources, as few public sector organisations can continue to afford substantial external expertise.

Cllr Gary Porter, Leader of South Holland District Council, was among the graduates receiving their certificates. He said:

"The programme has helped me immensely. The collection of over 100 shared service tools, techniques and templates provided in the foundation module is particularly helpful."



> VOLUNTEERS PUT ON A 'MALAYSIAN DAY' AT STRODE PARK

## Volunteering time for others

Lip Vi Teoh is one of our many international volunteers making a difference in the local community. Now in his third year of learning English as a Foreign Language, he came to Christ Church with 46 other students on a twinning programme with his teacher training institution in Kuala Lumpur, Malaysia.

He is a volunteer at Strode Park Foundation, a charity providing respite and residential care for people with disabilities. He said:

"We spend about two hours a week with the residents, either playing board games or just chatting to them. I have learned skills which will be useful in my future career as a secondary school teacher and how to interact with different groups of people, to be more sensitive to their needs and how to listen. It also gives you an inexplicable joy to know you have made a difference to someone's day – money isn't everything; giving your time is far more valuable."

# 02

Our students enjoy some of the best employment prospects in England



## 02 STUDENT EMPLOYABILITY

Preparing students for life beyond university, for new employment opportunities or changing career paths, is an important part of the higher education experience. In encouraging creative minds and innovative thought, we are helping to develop the leaders and employers of the future.

In responding to the regeneration needs of Kent and Medway, through the development of new courses, work placements and research, we also ensure graduates leave Christ Church equipped with excellent employment skills.

Canterbury Christ Church has one of the best student employment records in the country, **positioned third highest university** in England.\*

The latest survey, published in 2011, showed that over **94% of our full-time first degree graduates are employed** or are in further study six months after leaving us, and this leaps to 97% when

we take into account graduates from our part-time courses.

Meanwhile, figures for the last year show that **96% of students** stayed at Christ Church throughout their course signalling confidence in the support, guidance and quality of teaching they receive here.

More importantly for Kent and Medway's communities, the majority of our graduates are choosing to stay in the area, many going into careers in our schools, hospitals and local businesses.

Investing student and graduate skills back into local businesses is vital for the county's regeneration and prosperity, particularly in times of economic instability.

Bob Jones, Associate Director of Business Support Kent, said:

"Christ Church genuinely engages across the business community on a number of levels: from the excellent business engagement at Hall Place Enterprise Centre to the long standing relationship with Canterbury City Partnership. The University really does 'walk the walk' in the way it is accessible to business and encourages its students and staff to work with local businesses.

"A good example of this is the way in which the University continues to organise work shadow opportunities for students, first developed during the nationally-organised Enterprise Week; the national 'brand' has now gone, but Christ Church delivers on its promises anyway. True commitment."

\* Based on the Destination of Leavers from Higher Education survey 2009/2010.





COLETTE GRIFFITHS

### Building great careers

Colette Griffiths graduated in 2011 after completing an Adult Nursing course. As part of her course, she gained valuable experience of working with patients in their home as part of a 'community' pilot. Commenting on the skills she has developed, Colette said:

"My studies at Christ Church fully prepared me for a future career in nursing. The opportunity to take part in the community pilot has also helped me to deliver a more holistic approach to care because of the understanding I've gained in people's homes. I've now chosen to work in Accident and Emergency.

"My experience at Christ Church is great preparation for the many opportunities and challenges in nursing."



LEA SOMORCIKOVA

### Creating graduate opportunities

Lea Somorcikova, a 24-year-old Business with Entrepreneurship graduate, has found permanent employment with a small business in Wye, Kent, after taking part in one of our graduate internship schemes in 2011.

Quickly rising to Technical Manager at the Wooden Spoon Preserving Company, she is now helping the company to expand into new business areas. Lea, who is also studying for a Masters in Business and Management at Christ Church, said:

"I feel challenged every day and really enjoy the fact that my responsibilities keep growing. It is a vibrant small business where I feel very needed, which keeps me motivated.

"Studying at Christ Church, and taking part in the internship scheme, really expanded my career opportunities. My job is so varied – from training staff, to writing company procedures and developing new systems as the company grows."

"Canterbury Christ Church University makes an essential contribution to our organisational aims to strengthen professional leadership to achieve the Trust's mission of 'providing safe, patient-focused and sustainable health services with and for the people of Kent'.

"We are delighted that we attract around 70% of East Kent students as newly qualified nurses and that they embrace our focus on delivering excellent standards of care and patient experience to all our services users."

Helen O'Keefe, Associate Chief Nurse  
East Kent Hospitals University NHS Foundation Trust

03

Sarah Cant, Principal Lecturer in the award-winning Sociology and Social Science team





# 03 EXCELLENCE



Building on our considerable success over the last 49 years, we are now stronger than ever and look forward to a bright, confident future in which we can make a lasting difference to students' and communities' lives.

The passion and innovation of our staff, students and partners makes Christ Church a special place. There are plenty of examples, over the last 12 months, of how we are making an impact inside and outside the University, some of which are highlighted in this Report.

These examples of excellence reveal how we are making a high value contribution to the students who choose to study at Christ Church and to the range of local communities we serve through our campus network.

2010/11 gave us many reasons to be optimistic about the future. We experienced record numbers of visitors to our Open Days (over 8,000 people), our student employability record is one of the best in the country, and we continue to be recognised nationally for our work:

- > Our teacher education and Teach First provision are graded **outstanding** by Ofsted
- > We are in the **Sunday Times Top 10** for student employability\*
- > We have leapt up the People and Planet league table for our environmental progress, moving to a First Class award (we are now **31 out of 142** universities and colleges).

\* University Guide 2012



Our new Strategic Plan 2011 – 2015 will build on this extraordinary record of success by putting our students, and their experience at Christ Church, at the centre of everything we do.

Following consultation with 600 of our staff over the summer, we have a clear set of strategic priorities to enable us to deliver this experience. They include:

- > the development of a flexible, innovative academic portfolio
- > developing the University as a national and international centre for excellence in public service education
- > creating transformative partnerships that benefit our students, stakeholders and wider society
- > accelerating our research and knowledge exchange to promote effective policy, enhance professional practice and facilitate social, cultural and economic prosperity
- > promoting a sustainable future.

Silvia Rasca, our Students' Union President, commented:

"The University creates an excellent environment in which the students are integral. Christ Church takes into account all different stages of the student journey. It approaches it not only from an academic perspective, but also from the support and development stages which are so crucial to the student experience. The University is working constantly to improve this experience with the ultimate aim of preparing graduates for a thriving future career."



SILVIA RASCA

Our Annual Report provides an opportunity to recognise the outstanding contribution of our staff and students. Their achievements are many, and this Report features only a small number.

People make an organisation successful, and we are grateful for the excellent work they undertake.



PROFESSOR TONY LAVENDER

Professor Tony Lavender, Pro Vice-Chancellor for Research and Knowledge Exchange, is a British Psychological Society award winner for his national impact on clinical psychology.

The MB Shapiro Award 2011 recognises innovation in the field and celebrates outstanding clinical psychologists at the later stage of their career.

Former Division of Clinical Psychology Awards Committee Chair Tim Cate said:

“Professor Lavender’s contribution towards workforce planning has been of the utmost importance to clinical psychology, most recently as co-chair for the New Ways of Working for Applied Psychologists. He has worked for many years in the area of workforce planning and his impact in developing clinical psychology nationally should not be underestimated.”



STEPHAN EYESON

Over the summer, Stephan Eyeson was named as one of the UK’s best black students in the Rare Rising Stars 2011 awards.

Stephan was presented with his award by Rising Star judges the Rt. Hon. David Lammy MP, Jean Tomlin, HR Director for London 2012, and Trevor Phillips OBE, Chair of the Equality and Human Rights Commission.

As a Christ Church student in his third year of studying Theology and Health, he received national praise for his enterprise skills. After missing out on three full-time basketball scholarships at American universities due to administrative delays, Stephan was inspired to set up Get Pro Basketball which enables players to promote themselves to coaches and agents across the world via a dedicated online website. Today, one in three players using Get Pro is signed up by American colleges, academies and agents.



DR MASI NOOR

At the forefront of international research into the psychology of violent conflict is Dr Masi Noor, a Senior Lecturer in Social Psychology at Christ Church.

Masi received the American Psychological Association's 2010 Early Career Recipient (Society for the Study of Peace, Conflict, and Violence: Peace Psychology Division), in recognition of his work in understanding and resolving violent group conflicts.

Over the years, Masi has conducted research into the psychology of violent conflict in the Middle East, Latin America, and Northern Ireland.

The American Psychological Association said:

"The Committee members were very impressed with Masi's scholarly productivity and his ability to integrate research with activism in such important areas."



PROFESSOR JAN DEWING

Professor Jan Dewing, from Canterbury Christ Church University's Department of Nursing and Applied Clinical Studies, is a 2011 Royal College of Nursing Australia International Achievement Award winner.

Jan is Head of Person-Centred Research and Practice Centre Development, a joint partnership role between Canterbury Christ Church University and East Sussex Community Health NHS.

The International Achievement Award recognises professionals who have influenced international nursing in the areas of direct care, education, research or management.



DR BASIL ATHANASIADIS

After graduating from Christ Church, Dr Basil Athanasiadis was invited to continue his research into contemporary composition and Japanese aesthetics at the Tokyo University of Music and the Arts. After the successful completion of this one-year Postdoctoral Fellowship, supported by the Japanese Society for the Promotion of Science (JSPS), Basil received a second consecutive award from the same organisation for a two-year Postdoctoral Fellowship in Japan.

The project involves Canterbury Christ Church, Tokyo University of Music and the Arts, and the association Shonorities, and will promote new works for Japanese and western instruments in the UK, Holland and Greece. Some of Basil's work has been supported by the British Council and broadcast on BBC television.

# Excellence: Teaching

For decades, we have taken great care to provide an inspirational learning experience for the many thousands of students who study here.

In the last 12 months, we have invested in our teaching facilities, our connections with partners in learning, and our academic staff who bring with them extraordinary talent and connection to the wider world.

Nationally, we are building our reputation for teaching excellence. In 2010 and 2011, Ofsted graded our Initial Teacher Education and

Teach First courses as “outstanding” while our Primary Education has the best (and sustained) track record for “outstanding” Ofsted grades in the country.

Furthermore, for the past three years we have been in the Complete University Guide’s Top 10 for Education.

Similarly, our Sociology and Social Science team has been recognised for its outstanding teaching. The team was this year awarded the National Award for Excellence in Teaching Sociology, on behalf of the British

Sociological Association (BSA) and the Subject Network for learning and teaching Sociology, Anthropology and Politics (C-SAP).

The award recognised the work submitted by the academics, entitled ‘Inclusive learning and academic integrity: making the promise of sociology accessible’, which describes an innovative learning, teaching and assessment initiative.

But there are also many other academics who make teaching at Christ Church leading-edge...



PROFESSOR PAUL EDLIN

## At the forefront of musical talent

Paul Edlin, Professor of Music at Canterbury Christ Church University, became the new president of the Incorporated Society of Musicians (ISM) in 2011.

The ISM is the national professional body for musicians, championing the importance of music and protecting the rights of those working within the music industry.

Paul holds many other positions locally, including Artistic Director of the Canterbury-based contemporary music festival Sounds New, and was Artistic Director of the Deal Festival. He also serves on several regional and national arts committees and in 2006 was elected a fellow of the Royal Society of Arts.

Paul’s works have been performed both nationally and internationally by some of the world’s leading artists such as Dame Evelyn Glennie, Nicholas Daniel, Rolf Hind and the Southbank Sinfonia. They have also been broadcast on BBC 2 and Radio 3.



PROFESSOR JACKIE EALES

## History in the making

Jackie Eales, a Professor of Early Modern History, was elected President of the Historical Association in May.

As the national organisation representing the case for an historical education to policymakers and ministers, it advises on curriculum issues at all levels and furthers the study, teaching and enjoyment of history.

There are over 53 local branches of the Historical Association across the country, including one in Canterbury, and Jackie's prominent connections with the association are destined to benefit students and local communities.



DR ROBERT BOWIE

## Prestigious award for teaching

Over the summer, Dr Robert Bowie, Senior Lecturer in the Faculty of Education, was awarded a National Teaching Fellowship, one of the most prestigious awards for excellence in higher education teaching and support for learning.

The National Teaching Fellowship Scheme is part of an overall Higher Education Academy programme to inspire and celebrate teacher excellence.

Robert receives £10,000 for his commitment in leading the secondary religious education courses at the University and was chosen from over 200 nominations submitted by higher education institutions across England, Northern Ireland and Wales.



TOM PURVES

## Putting students on the road to success

We have also been appointing high-profile members of industry and commerce to inspire our students. One such leading figure is the universally respected business leader and former Chief Executive Officer of Rolls-Royce, Tom Purves, who has joined our Business School as Visiting Professor in Management Practice.

Tom has over 30 years experience in senior management in the motor industry, including his time as President of BMW in America, where he successfully introduced the Mini Cooper.

He is internationally renowned for his communication and negotiating skills, innovative marketing strategies, pioneering use of digital media and forging strategic partnerships.

Given our strong connections with public services, the research we undertake cuts across many areas of public life from health and social care, sport science, the arts and education.

The majority of this work focuses on how communities, and individual lives, can be positively changed as a result of our research. And in the last 12 months, research has made a real impact on Kent and Medway's communities.

Meanwhile, our research is gaining national recognition.

Following a highly competitive national bid for postgraduate funding, Christ Church was awarded Arts and Humanities Research Council studentships – a clear acknowledgement of the University's world class reputation

in music teaching and research. The prestigious awards will provide a substantial contribution to our music students' fees and maintenance costs whilst studying.

Our Sidney De Haan Research Centre for Music, Arts and Health also received £130,000 from the Dunhill Medical Trust to continue its innovative study into the value of singing for people with lung disease.

Also in the last 12 months, the Archbishop of Canterbury, and Chancellor of Canterbury Christ Church University, the Most Revd and Rt Hon Dr Rowan Williams, officially opened our latest research centre: the Research Centre for Children, Families and Communities.

The centre is undertaking work to enhance the lives and life chances of children and young people, their

families and communities, both in the UK and abroad. On opening the centre, Dr Williams said:

"Issues around children and families have for many years been part of my own central concern and it is a great inspiration to see this University putting these concerns at the heart of their own priorities."

Professor Trisha Maynard, Director of the centre, has also been appointed to the Research Excellence Framework's 2014 Education Sub Panel – again testimony to our national profile in the area of Education research.

Here we profile a small number of the many successful research projects undertaken in the last year:



> PARA-ATHLETES WITH AN INTELLECTUAL DISABILITY CAN ONCE AGAIN COMPETE IN THE OLYMPICS

## At the centre of the Paralympics

Jan Burns, Professor of Clinical Psychology, is a member of an international research group which has directly influenced the re-inclusion of athletes with learning disabilities into the Paralympic Games 2012.

Inas, the International Federation for sport for para-athletes with an intellectual disability, and the International Paralympic Committee, funded a global research group to devise a new, robust, classification system.

Now, as Head of Eligibility, Jan co-ordinates a network of psychologists across the world to assess athletes in their own countries.





PROFESSOR ANNMARIE RUSTON

## Vital health research with Gypsy and Traveller communities

As a result of studies by the Centre for Health and Social Care Research, a pioneering new health programme has been introduced into Gypsy and Traveller communities.

According to the centre's research, Gypsy and Traveller communities' beliefs often mean they reject conventional health services. This, in turn, leads to worryingly lower levels of reported good health compared with other social groups.

Professor Annmarie Ruston said:

"The average life expectancy of someone in a Gypsy or Traveller community is 10 to 12 years less than the general population and 42% have a long term illness, whilst understanding of healthy lifestyles and uptake of preventative programmes are low. It is important that we address these issues and try to erase these differences in experiences for the Gypsy and Traveller communities."

As a result of the knowledge exchange project, funded by the Higher Education Funding Council's South East Coastal Communities initiative, 16 members of the Gypsy and Traveller community have gained health-related qualifications, two of whom have been employed by the NHS as health trainers for their communities. Professor Ruston is also leading on the publication of a report which will recommend policy changes to health provisions for the Gypsy and Traveller communities.



&gt; THE GREAT SEAL OF KING HENRY III

## National archives brought to life

A three-year research project by Canterbury Christ Church University, King's College London, and the National Archives brought to life remarkable material from the reign of King Henry III.

The Fine Rolls of King Henry 1216 – 1272, were translated from Latin into English and encoded electronically, creating indexes and search facilities for the website: [www.finerollshenry3.org.uk](http://www.finerollshenry3.org.uk).

With funding of £1 million from the Arts and Humanities Research Council, the project, formally known as 'From Magna Carta to the Parliamentary State: The Fine Rolls of King Henry 1216 – 1272', also benefited from pioneering technical work carried out by King's College London.

Dr Louise Wilkinson, a Senior Lecturer in Medieval History at Canterbury Christ Church, has been one of the project's co-directors since its inception in 2005.

# Excellence: Partnerships



DAVID SMITH

Partnerships took on a new dimension in 2010/11 with the appointment of a new Director of Partnerships, Sue Kendall-Seatter, and a Pro Vice-Chancellor for External Relations, David Smith, to lead the University's expanding network of partners.

These partnerships stretch far and wide, from the many schools, hospitals, sports and cultural organisations we work with here in Kent and Medway, to our growing number of national and international connections.

The majority of our teaching and research is heavily dependent on mutually beneficial partnerships, ensuring we remain responsive and relevant to social and cultural needs.

During the same period, our international academic partnerships have grown for the benefit of students in this country and abroad. These include links with the Institute of Chartered Financial Analysts of India Business School, the University of Eastern Finland, the University of Kerala and the Franciscan International Study Centre, to name but a few.

There are also exciting cultural partnerships underway.



With the London Olympics and our own Jubilee on the horizon, there have been plenty of opportunities to demonstrate our passionate support for the arts, culture and sport in 2010/11. From the Creative Campus Initiative, Kent 20in12 and the Cultural Olympiad, we continue to find new and exciting ways to link up our University, the community and creative industries.

Our support for regional arts and culture was acknowledged at the Canterbury for Culture Awards 2011, in which we won the Commercial Collaboration Award in recognition of our five-year partnership with the Canterbury Festival.



In the last 12 months, for example, we have developed a new paramedic degree at our Medway Campus with the South East Coast Ambulance Service, in response to national moves towards degree-qualified ambulance staff. We also introduced a new Foundation Degree in Volunteering as a result of a long lasting collaboration between the Faculty of Health and Social Care and the Canterbury District Community Alliance.

Organiser of the Culture Awards and Chair of Canterbury for Culture Tim Le Lean said:

“Christ Church has shown over the last few years that it is a major cultural player in the city, and this year’s award recognises its long-standing and prominent contribution to the region’s cultural offer.



“Christ Church is perhaps best known for its musical concerts and other performances, however, its reputation goes beyond music with its support for exhibitions, digital media and performing arts. It plays a crucial role in encouraging talent and supporting creativity, and its understanding of the fundamental value of the arts to the local economy is well-demonstrated by its willingness to open its facilities to cultural organisations like ours.”



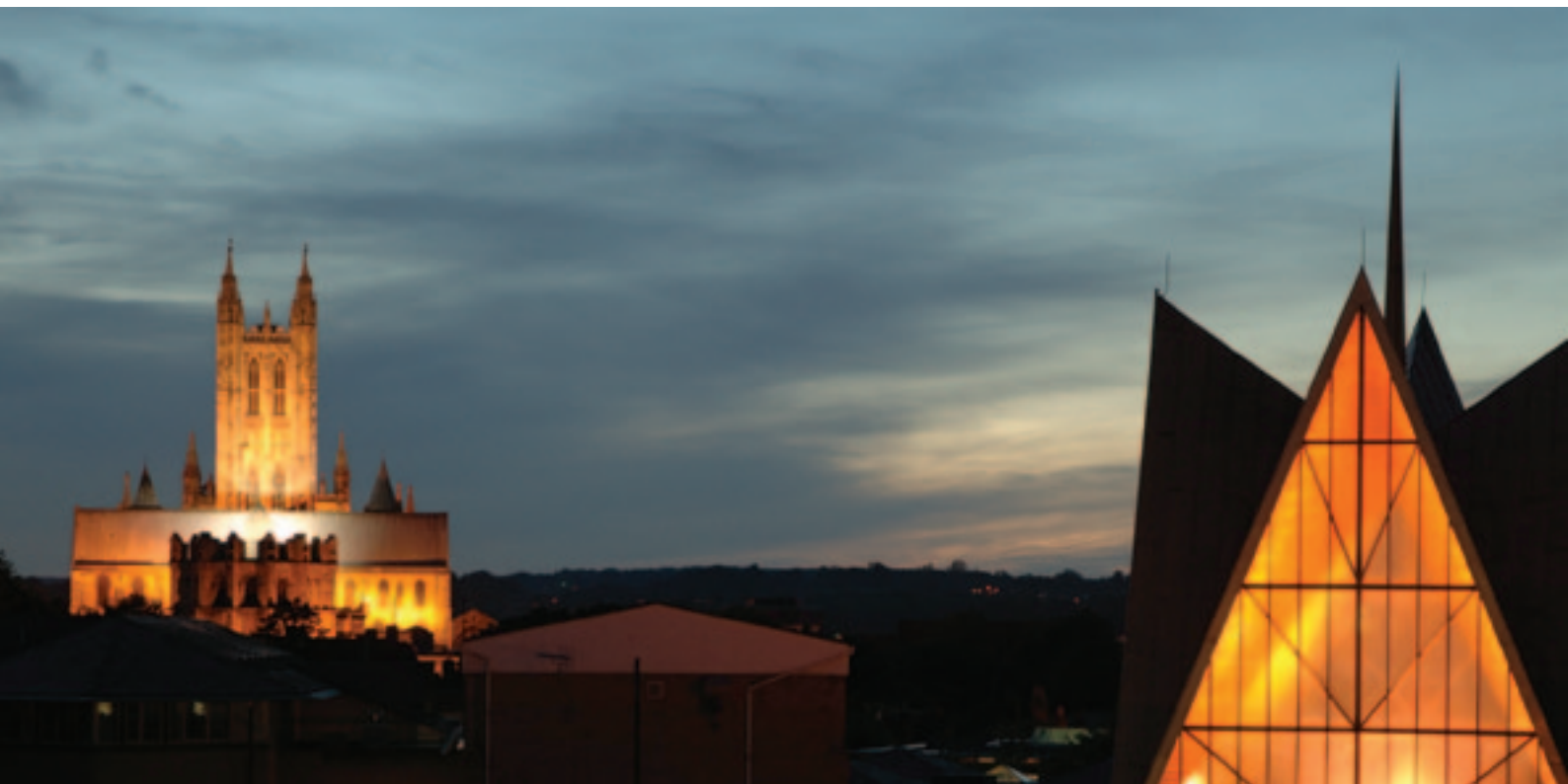
While at the forefront of supporting the arts, we are also instrumental in creating new cultural opportunities. This year, we hosted a stunning concert with our partners the Southbank Sinfonia, at which the world-class conductor Vladimir Ashkenazy performed in Canterbury Cathedral.

As artistic partner to the prestigious contemporary music festival Sounds New, we also hosted an opening evening concert in Augustine Hall, to mark our strong partnership, and welcomed internationally acclaimed Estonian composer Arvo Pärt to the three day conference, *Baltic Musics and Musicologies*, organised by Dr Eva Mantzourani (shown left with Arvo Pärt), Reader of Musicology at the University.

Over the coming years, we have a vision to build on these partnerships for the benefit of the region’s cultural and economic regeneration, whilst helping to build capacity within communities across the world.



# Excellence: Partnerships



## Stewards of common heritage

Last year, we signed a Memorandum of Understanding with Canterbury Cathedral to celebrate our shared Christian Church foundation.

This agreement is a symbol of the commitment to develop further

work in the areas of worship, academic endeavour and stewardship of common heritage.

The signing of the memorandum will lead to further projects linking the two institutions, including the involvement

of Christ Church musicians in special Cathedral services, matched Cathedral and University 'Christ Church Choral Vicar Scholarships' and a combined lecture series and discussion events, jointly hosted by the Dean and the Vice-Chancellor.

Chris Hespe, Head of Sport, Leisure and Olympics at Kent County Council, said:

"Canterbury Christ Church University is a tremendous and innovative partner for sport in Kent. Not only is the University providing a county-wide sport science service of national repute and a sports research function that is second to none, but it has been enhancing its facility stock in recent years and now provides an essential service to the local community as well as to its students.

"In addition, the Sport Scholarship Scheme has attracted top level performers to the area, which has enhanced the profile and standing of the University. As we approach the inspirational year of the London 2012 Games, I am genuinely excited about the positive approach and direction that the University is taking in sport and leisure."



## World Bank partnerships

Our Director of Partnerships, Sue Kendall-Seatter, and a team working across the Faculties of Education and Arts and Humanities, have been chosen by the World Bank as an international partner to help a critical programme of change in Palestine.

Chosen because of our reputation for outstanding teacher education, Sue and her team are working on two major projects in Palestine – one for the Ministry of Education to support the development of teaching practice models in Primary Education and the other with three universities to support their development of teachers of English.

Sue said:

“As international consultants we are proud to be involved in such an important project which has mutually beneficial aims and vision.

“In sharing our experience and expertise in a country eager to develop its teacher education, particularly at Primary level, we’ll be helping future generations of children and teachers in Palestine for years and decades to come.”



SUE KENDALL-SEATTER

## Shaping European policing

We have also developed a new partnership with the Estonian police force, contributing to officers’ study programmes.

Academics from our Department of Law and Criminal Justice Studies have been sharing their expertise with police officers in Estonia, who specialise in criminal investigation and

counter-terrorism. Dr Robin Bryant, Director of Criminal Justice Practice, has extended this partnership by undertaking research into serial crime and the use of inferential databases.

## Consolidated Income and Expenditure Account

For the year ended 31 July 2011

	2011 £000	2010 £000
<b>Income</b>		
Funding body grants	48,478	47,338
Tuition fees and education contracts	50,774	48,384
Research grants and contracts	1,104	1,495
Other operating income - other	17,822	16,165
- exceptional item	750	-
Endowment income and interest receivable	17	10
<b>Total income</b>	<b>118,945</b>	<b>113,392</b>
<b>Expenditure</b>		
Staff costs	64,158	61,516
Other operating expenses	36,917	38,521
Depreciation of tangible fixed assets	7,626	6,456
Interest payable and other finance costs	1,508	2,076
<b>Total expenditure</b>	<b>110,209</b>	<b>108,569</b>
<b>Surplus for the year after depreciation of tangible fixed assets at cost and before taxation</b>	<b>8,736</b>	<b>4,823</b>
Taxation – charge	-	203
<b>Surplus for the year after depreciation of tangible fixed assets at cost and taxation</b>	<b>8,736</b>	<b>4,620</b>
<b>Exceptional item:</b>		
Net (loss) / gain on disposal of tangible fixed assets	(61)	66
<b>Surplus for the year after depreciation of tangible fixed assets at cost, disposal of tangible fixed assets and taxation</b>	<b>8,675</b>	<b>4,686</b>
<b>Deficit for the year transferred to / from accumulated income in endowment funds</b>	<b>12</b>	<b>14</b>
<b>Surplus for the year retained within general reserves</b>	<b>8,687</b>	<b>4,700</b>

There is no material difference between the surplus after depreciation of tangible fixed assets at cost and taxation stated above and the historical cost equivalents. The consolidated income and expenditure of the Group is in respect of continuing activities.

## Our students

For academic year 2010 - 2011\*

### Age

	full-time	%	part-time	%	total	% total
Under 18	11	0.1	1	0.0	12	0.1
18-20	5,141	28.2	214	1.2	5,355	29.4
21-24	2,740	15.1	583	3.2	3,323	18.3
25-29	1,030	5.7	943	5.2	1,973	10.8
30+	1,838	10.1	5,685	31.2	7,523	41.4
Age unknown	0	0.0	0	0.0	0	0.0
<b>Total</b>	<b>10,760</b>	<b>59.2</b>	<b>7,426</b>	<b>40.8</b>	<b>18,186</b>	

### Geographical origin

	full-time	%	part-time	%	total	% total
England (Kent)	6,404	35.2	5,075	27.9	11,479	63.1
England (other)	2,919	16.1	1,932	10.6	4,851	26.7
Wales	60	0.3	31	0.2	91	0.5
Scotland	32	0.2	34	0.2	66	0.4
N Ireland	49	0.3	76	0.4	125	0.7
CI & IoM	8	0.0	9	0.0	17	0.1
UK Unknown	1	0.0	12	0.1	13	0.1
Other EU	888	4.9	103	0.6	991	5.4
Non EU	399	2.2	154	0.8	553	3.0
<b>Total</b>	<b>10,760</b>	<b>59.2</b>	<b>7,426</b>	<b>40.8</b>	<b>18,186</b>	

### Students

	No. students	%
Full-time	10,760	59.2
Part-time	7,426	40.8
<b>Total</b>	<b>18,186</b>	<b>100.0</b>

	Subject areas	%
Arts and Humanities	3,092	17.0
Business and Management	1,205	6.6
Education	6,149	33.9
Health and Social Care	4,753	26.1
Social and Applied Sciences	2,735	15.0
Unknown	252	1.4
<b>Total</b>	<b>18,186</b>	<b>100.0</b>

### Exit qualification

	No. students	%
Doctorate	44	0.8
Other Higher Degree	295	5.2
PGCE	422	7.4
Other PG Qualification	455	7.9
First Degree	2,603	45.4
Professional Graduate Cert. in Education	438	7.7
Foundation degree	369	6.4
HND/DipHE	184	3.2
Other UG Qualification	914	16.0
<b>Total</b>	<b>5,724</b>	<b>100.0</b>

\* Based on HESA academic year 2010/11  
 Percentages are rounded to one decimal place

## Our staff

Average number of FTE staff for the year ended 31 July 2011

Teaching Departments	Teaching Support Services	Admin & Central Services	Premises	Total
580	217	658	36	1,492

## Honorary Fellows

The following people received Honorary Fellowships from the University in 2010/11 for their dedication and work within the community.

Charlotte Edwards MBE  
International cricketer and Captain of the England Women's team.

Darren Henley  
Managing Director of Classic FM.

Roddy Loder-Symonds  
Vice President of Canterbury Festival and former Governor at Christ Church from 1998-2010.

Leyland Ridings MBE  
Councillor and former Deputy Cabinet Member for Vulnerable Children and Children and Young People's Health.

Richard Sturt OBE  
Solicitor and former Kent Coroner, who conducted the inquests following the capsizing of the MS Herald of Free Enterprise and the IRA bombing in Deal.

## New Professors, Principal Lecturers and Readers

The University conferred the following titles:

Professor	Dr Adrienne Gavin
Principal Lecturers	Dr Jim Butcher Mr Peter Grimes Dr Ralph Norman Ms Claire Thurgate Dr Jim Wiles
Readers	Dr Dikaia Chatziefstathiou Dr Kathy Gooch Dr Louise Mansfield Dr Eva Mantzourani Dr Andrew Peterson



## Governing Body Members

Mr Peter Hermitage QPM (Pro-Chancellor)  
 Mr Stephen Clark TD (Deputy Pro-Chancellor)  
 Rt Revd Trevor Willmott (Deputy Pro-Chancellor)  
 Professor Robin Baker CMG (Vice-Chancellor)  
 Revd Janina Ainsworth  
 Mr Chris Byrne  
 Mr Christopher Calcutt  
 Mr Colin Carmichael  
 Miss Ren Chinnadurai  
 Mr Cedric Frederick  
 Revd Nigel Genders  
 Cllr Sarah Hohler

Mr David Kemp  
 Rt Revd James Langstaff  
 Mr Tony McDonald  
 Mr Frank Martin  
 Dame Janet Trotter DBE, DL  
 Ms Rosie Turner  
 Ms Deborah Upton  
 Venerable Sheila Watson  
 Dr Chris Bull – Staff Governor (Academic Board)  
 Mr Philip Jones – Staff Governor (Teaching staff)  
 Mr Paul Sims – Staff Governor (Professional Services staff)  
 Mr Steven Godwin – Student Governor

## Officers of Canterbury Christ Church University

Chancellor  
 The Most Reverend and Right Honourable  
 the Lord Archbishop of Canterbury,  
 Dr Rowan Williams

Vice-Chancellor  
 Professor Robin Baker CMG

Pro-Chancellor and  
 Chairman of the Governing Body  
 Mr Peter Hermitage QPM

Deputy Pro-Chancellors  
 Mr Stephen Clark TD  
 Rt Revd Trevor Willmott

Pro Vice-Chancellors  
 Professor Margaret Andrews  
 Professor Tony Lavender  
 Professor Sue Piotrowski  
 Dr Keith Gwilym  
 Mr David Smith

Strategic Director (Resources)  
 Mr Andrew Ironside

Dean of Chapel  
 The Reverend Dr Jeremy Law

University Solicitor and  
 Clerk to the Governing Body  
 Mr Paul Bogle

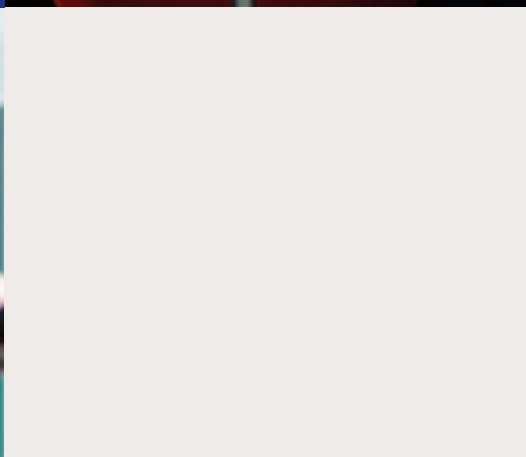


OVER 50% OF OUR GRADUATES STAY IN KENT AND MEDWAY TO WORK, REINVESTING THEIR SKILLS, KNOWLEDGE AND INCOME BACK INTO THE LOCAL ECONOMY



OUR TEACHER EDUCATION AND TEACH FIRST PROVISION ARE GRADED 'OUTSTANDING' BY OFSTED

WE EMPLOY 1,800 LOCAL PEOPLE  
... AND HAVE HELPED TO CREATE NEARLY 1,700 FULL-TIME ADDITIONAL JOBS OUTSIDE THE UNIVERSITY – THE MAJORITY IN THE SOUTH EAST



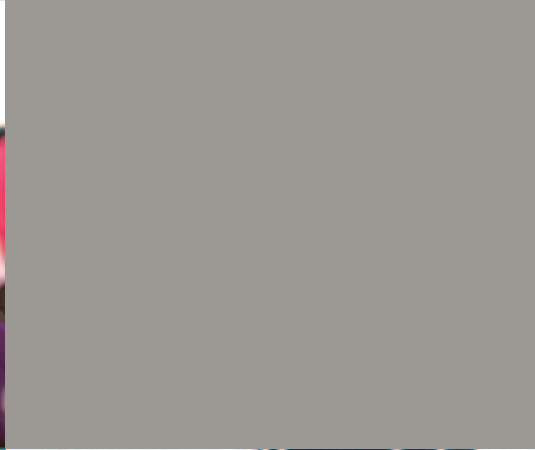


WE ARE IN THE SUNDAY TIMES TOP 10 FOR STUDENT EMPLOYABILITY (UNIVERSITY GUIDE 2012)

© Keith Saunders



IN CHOOSING TO STUDY LOCALLY, STUDENTS FROM THE SOUTH EAST PUT £109 MILLION BACK INTO THE LOCAL ECONOMY



2,012 JOBS WERE CREATED IN THE SOUTH EAST AS A RESULT OF CANTERBURY CHRIST CHURCH UNIVERSITY STUDENT SPENDING POWER



## Our campus network:

### Canterbury

North Holmes Road,  
Canterbury, Kent CT1 1QU  
+44 (0) 1227 767700  
[www.canterbury.ac.uk](http://www.canterbury.ac.uk)

### Broadstairs

Northwood Road,  
Broadstairs, Kent CT10 2WA  
+44 (0) 1843 609120  
[www.canterbury.ac.uk/broadstairs](http://www.canterbury.ac.uk/broadstairs)

### Medway

Rowan Williams Court,  
30 Pembroke Court, Chatham, Kent ME4 4UF  
+44 (0) 1634 894450  
[www.canterbury.ac.uk/medway](http://www.canterbury.ac.uk/medway)

### Salomons

Broomhill Road, Southborough,  
Tunbridge Wells, Kent TN3 0TG  
+44 (0) 1892 515152  
[www.canterbury.ac.uk/salomons](http://www.canterbury.ac.uk/salomons)

### University Centre Folkestone

Glassworks, Mill Bay,  
Folkestone, Kent CT20 1JG  
+44 (0) 1303 760600  
[www.canterbury.ac.uk/folkestone](http://www.canterbury.ac.uk/folkestone)

[www.canterbury.ac.uk](http://www.canterbury.ac.uk)

If you require this publication in an alternative format,  
please contact the Corporate Communications Unit.

Email: [corporatecommunications@canterbury.ac.uk](mailto:corporatecommunications@canterbury.ac.uk)