

CARDIFF SCHOOL OF ART & DESIGN POSTGRADUATE PROGRAMMES

Course Lengths: All Masters courses are one year full time and two years part time.

Entry Requirements: Applicants should have a good Honours degree (or equivalent) in the relevant field they are applying for. We also recognize the value of prior learning and experience within related fields.

email: csadpostgradstudies@uwic.ac.uk for more information.

MA CERAMICS

Career potential: A very high percentage practice professionally: many exhibiting work developed through their MA studies and links established with galleries and other agencies or organisations associated with the visual arts. Some establish their own studios and others base themselves in co-operative studios. A steadily increasing number are pursuing research degrees, either within the School or in other institutions and establish themselves as researchers or teachers.

MSC ADVANCED PRODUCT DESIGN

Career potential: The programme is offered in collaboration with the National Centre for Product Design & Development Research (PDR) and combines state of the art design and manufacturing expertise. It is principally aimed at enabling our graduates to develop their careers in contemporary product design, product development, and design management. Graduates can therefore expect to find employment in modern design consultancies, product design and manufacture companies, or high-tech companies.

MASTER OF FINE ART (MFA)

Career potential: This programme is designed to fit the requirements of contemporary professional artists. The aim is to help students develop and strengthen their existing practice within a critical academic context through a negotiated programme of learning with the support of highly skilled staff and technicians. Graduates of the MFA programme are well placed to continue to pursue a career within the field of contemporary visual art.

MASTER OF DESIGN (MDES)

Career potential: With emphasis on practice, the MDes is intended for those who have, and wish to maintain, a career in any form of professional design practice. The MDes provides an opportunity for advanced design study in the context of a professional situation and to specialize in a particular area of design practice. Typical career destinations include Professional Design Practice, Design Enterprise, Design Management as well as careers in education and academia.

FINE ART - MA (ART & DESIGN)

Career potential: The Fine Art MA programme helps students develop their practical and theoretical interests in relation to a body of artwork that is important in a contemporary fine art context. Graduates of the Fine Art MA programme are well placed to pursue their career as practising artists in a contemporary context. Others may also develop their careers in arts administration, teaching or lecturing, or as a researcher in the wider creative industries or academia.



COMMUNICATION - MA (ART & DESIGN)

Career potential: Our Communication MA is a programme for practising artists and designers who want to explore intellectual and creative territories that are current and challenging. Graduates are well placed to pursue their career as practising contemporary communicators in a variety of professional or creative industries contexts (for example graphic design, illustration, new media, the mass media, journalism, public relations and marketing). Others may seek to develop their careers in education and academia.

ART & SCIENCE - MA (ART & DESIGN)

Career potential: Our Art and Science MA is intended for art and design graduates who wish to develop their practice in a dialogue with scientific enquiry, and for science graduates who wish to explore how art and design theory and practice can inform the visual and aesthetic dimensions of science. Graduates are well placed to pursue their career as communicators in a variety of professional or creative industries contexts, or to develop their careers in education and academia.

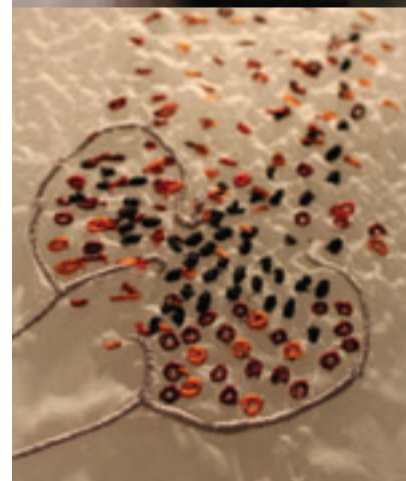
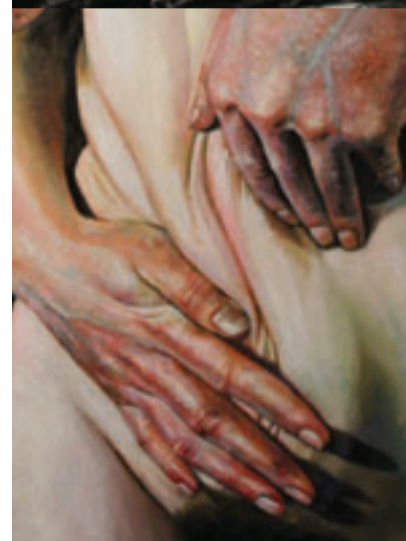
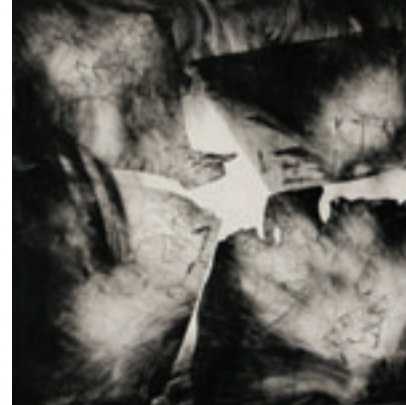
ECOLOGIES - MA (ART AND DESIGN)

Career potential: Our Ecologies MA is intended for art and design graduates who wish to develop the ecological dimension of their practice, and for humanities or science graduates who are interested in how ecology, aesthetic experience, and visual practice can challenge and expand one another. Graduates are well placed to pursue their career as communicators in a variety of professional or creative industries contexts or to develop their careers in education and academia.

PHILOSOPHY - MA (ART AND DESIGN)

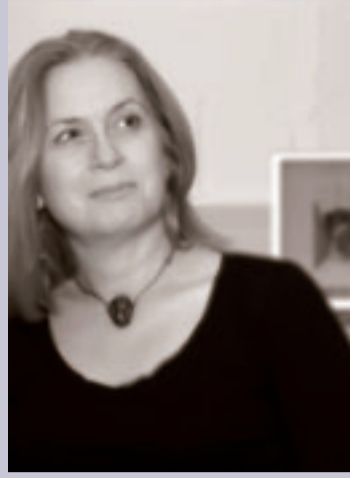
Career potential: Our Philosophy MA is intended for art and design graduates who wish to explore philosophical themes arising from their work, or to develop their practice in response to philosophical ideas and questions. It is also designed for humanities or science graduates who are interested in how thought is affected when it has to confront the demands of aesthetic experience and art and design practice. Graduates are well placed to pursue their career as communicators in a variety of professional or creative industries contexts, or to develop their careers in education and academia.

Further information:
Dr Gareth Loudon
csadresdegrees@uwic.ac.uk



CARDIFF SCHOOL OF ART & DESIGN

POSTGRADUATE
PROGRAMMES 2012



At Cardiff School of Art & Design, we believe in being at the top of our game and that includes being able to deliver masters programmes that really make a difference. We give our postgraduate students every opportunity to explore all kinds of creative and professional possibilities, in an environment that recognizes the importance of taking risks and seizing the initiative.

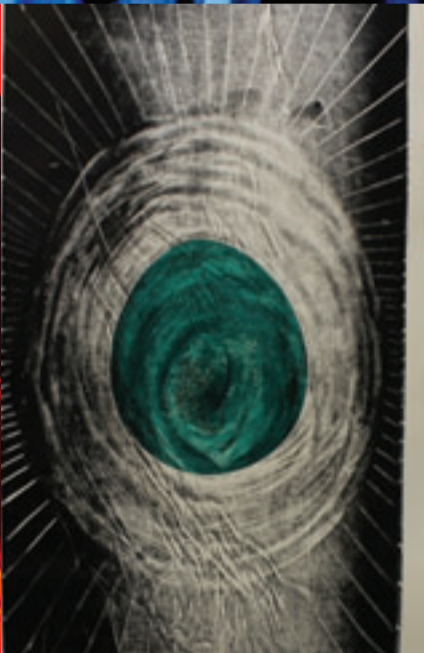
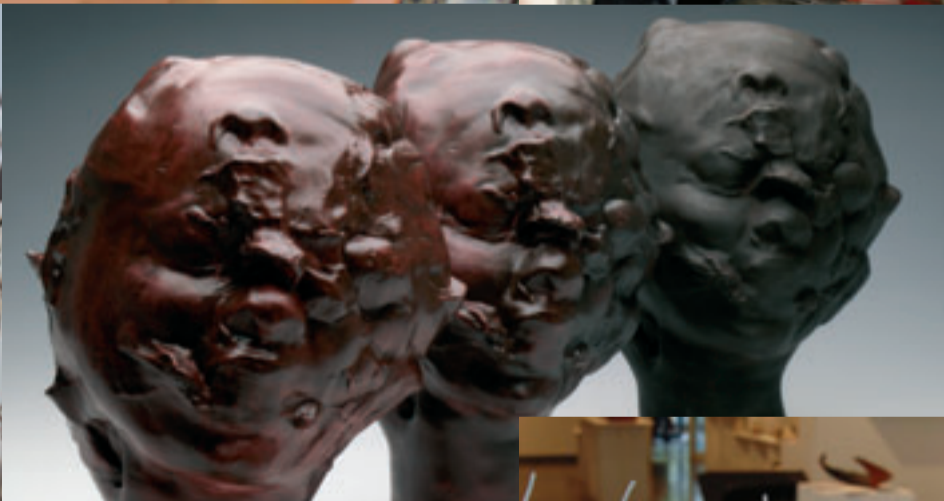
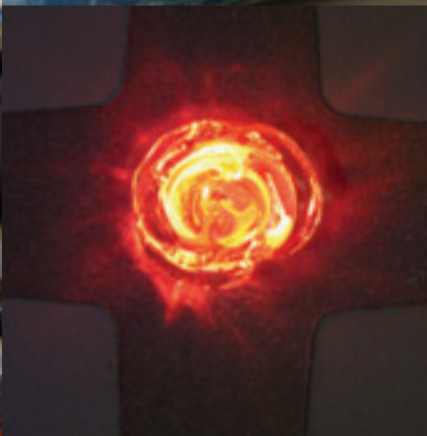
Our Masters awards have been designed to give real opportunities for post-graduate students to explore their disciplines through their own practice, employing challenging ideas that will enable a significant step forward. You design your own project and we back you in the fulfillment of your intellectual, professional or artistic aspirations.

We are situated in the real world and recognize the roles that architects, artists, makers and designers can play, not least in the recovery from recession. We are especially committed to equipping all of our postgraduates with the courage and skills needed in a world where they will have much to offer.

All of this happens in one of Europe's most vibrant capital cities, where culture and the arts are extraordinarily lively and the mountains and sea close at hand. It's a city of architects, designers, makers and artists. It's also a city of sport and entertainment, not to mention Dr Who and Torchwood!

We look forward to meeting you and to welcoming you further to Cardiff School of Art & Design.

Professor Gaynor Kavanagh DPhil MPhil FMA
Dean
Cardiff School of Art & Design



UNDERGRADUATE

- ▶ Cardiff Diploma in Foundation Studies (Art & Design)
- ▶ Foundation Degree in Contemporary Furniture Design (Bridgend)
- ▶ Foundation Degree in Ceramics (Barry)
- ▶ Foundation Degree in Textiles (Barry)
- ▶ Foundation Degree in Graphic Communication (Barry)
- ▶ HND Architectural Design & Technology (CSAD)
- ▶ HND Design for Interactive Media (Bridgend)
- ▶ BSc (hons) Architectural Design & Technology
- ▶ BA (hons) Artist Designer: Maker
- ▶ BA (hons) Fine Art
- ▶ BA (hons) Ceramics
- ▶ BA (hons) Textiles
- ▶ BA (hons) Graphic Communication
- ▶ BA (hons) Illustration
- ▶ BA (hons) Product Design
- ▶ BSc (hons) Product Design
- ▶ BA (hons) Photographic Practice (Bridgend College)

TAUGHT POSTGRADUATE

- ▶ Postgraduate Certificate in Professional & Research Skills: Art & Design
- ▶ MA Ceramics
- ▶ MSc Advanced Product Design
- ▶ Master of Fine Art (MFA)
- ▶ Master of Design (MDes)
- ▶ MA (Art & Design) Fine Art
- ▶ MA (Art & Design) Communication
- ▶ MA (Art & Design) Textiles
- ▶ MA (Art & Design) Art & Science
- ▶ MA (Art & Design) Philosophy
- ▶ MA (Art & Design) Ecologies

RESEARCH DEGREES

- ▶ MPhil
- ▶ PhD
- ▶ Professional Doctorate: Ecological Building Practices



CARDIFF SCHOOL OF ART & DESIGN

csad.uwic.ac.uk

www.uwic.ac.uk/studywithus

**CARDIFF SCHOOL OF ART & DESIGN
HOWARD GARDENS CAMPUS
CARDIFF CF24 0SP
TEL: +44 (0)29 2041 6154
FAX: +44 (0)29 2041 6944
email: csad@uwic.ac.uk**

**CARDIFF SCHOOL OF ART & DESIGN
LLANDAFF CAMPUS
WESTERN AVENUE
CARDIFF CF5 2YB
TEL: +44 (0)29 2041 6637
FAX: +44 (0)29 2041 6640
email: csad@uwic.ac.uk**

