



University of  
**Strathclyde**  
Business  
School

2013/14

undergraduate  
prospectus

# Our courses

## 2013-2014

The following undergraduate courses are offered at Strathclyde. Please refer to the tables at the end of each Faculty section for full details of entry requirements and to the Admissions information on pg 148. If you would like to find out more about a particular course, please contact the person named in the course entry.

■ Engineering ■ Humanities & Social Sciences ■ Science ■ Strathclyde Business School

COURSE	DEGREE	HIGHERS	A LEVELS	PAGE
ACCOUNTING†	BA (Hons)	AAAA/AAAB	AAA	124
AERO-MECHANICAL ENGINEERING	MEng	AAAB	AAA	48
AERO-MECHANICAL ENGINEERING	BEng (Hons)	AAAB	AAB	48
APPLIED CHEMISTRY & CHEMICAL ENGINEERING	MSci	AABB/AAAC	ABB	98
ARCHITECTURAL STUDIES	BSc (Hons)	AAAB	ABB	32
ARTS and SOCIAL SCIENCES¹	BA (Hons)	AAAB	ABB	64
BIOCHEMISTRY	MSci	AABB/AAAC	ABB	93
BIOCHEMISTRY & IMMUNOLOGY	BSc (Hons)	ABBB/ABBC	BBB	93
BIOCHEMISTRY & MICROBIOLOGY	BSc (Hons)	ABBB/ABBC	BBB	93
BIOCHEMISTRY & PHARMACOLOGY	BSc (Hons)	ABBB/ABBC	BBB	93
BIOMEDICAL SCIENCE	BSc (Hons)	ABBB/ABBC	BBB	94
BUSINESS (without Accounting)²	BA (Hons)	AAAB/AAABBB	AAB	121
BUSINESS ENTERPRISE†	BA (Hons)	AAAB/AAABBB	AAB	126
BUSINESS INFORMATION SYSTEMS	BSc (Hons)	BBBB/ABBC	BBC	103
BUSINESS LAW†	BA (Hons)	AAAB/AAABBB	AAB	128
BUSINESS TECHNOLOGY†	BA (Hons)	AAAB/AAABBB	AAB	129
CHEMICAL ENGINEERING	MEng BEng (Hons)	AAAB	AAA	34
CHEMISTRY	MChem	BBBB/ABBC	BBC	98
CHEMISTRY with DRUG DISCOVERY	MChem	AABB/AAAC	ABB	98
CHEMISTRY with TEACHING	MChem	AABB/AAAC	ABB	100
CHILDHOOD PRACTICE	BA	See Entry		74
CIVIL ENGINEERING	MEng	AAAA	AAA	36
CIVIL ENGINEERING	BEng (Hons)	AAAB	AAB	36
CIVIL & ENVIRONMENTAL ENGINEERING	MEng	AAAA	AAA	37
CIVIL & ENVIRONMENTAL ENGINEERING	BEng (Hons)	AAAB	AAB	37
COMPUTER & ELECTRONIC SYSTEMS	MEng	AAAB	AAA	44
COMPUTER & ELECTRONIC SYSTEMS	BEng (Hons)	AAAB	AAB	44
COMPUTER SCIENCE	MEng	AABB/BBBBB	AAB	102
COMPUTER SCIENCE	BSc (Hons)	BBBB/ABBC	BBC	102
COMPUTER SCIENCE with LAW	BSc (Hons)	AABB/BBBBB	ABB	103
ECONOMICS†	BA (Hons)	AAAB/AAABBB	AAB	130
EDUCATION & SOCIAL SERVICES	BA	See Entry		74
ELECTRICAL & MECHANICAL ENGINEERING	MEng	AAAA B	AAA	44
ELECTRICAL & MECHANICAL ENGINEERING	BEng (Hons)	AAAB	AAB	44
ELECTRICAL & MECHANICAL ENGINEERING with INTERNATIONAL STUDY	MEng	AAAB	AAA	44
ELECTRICAL ENERGY SYSTEMS	MEng	AAAB	AAA	43

COURSE	DEGREE	HIGHERS	A LEVELS	PAGE
ELECTRONIC & DIGITAL SYSTEMS	MEng	AAAB	AAA	43
ELECTRONIC & ELECTRICAL ENGINEERING	MEng	AAAB	AAA	43
ELECTRONIC & ELECTRICAL ENGINEERING	BEng (Hons)	AAAB	AAB	43
ELECTRONIC & ELECTRICAL ENGINEERING with BUSINESS STUDIES	MEng	AAAB	AAA	43
ELECTRONIC & ELECTRICAL ENGINEERING with INTERNATIONAL STUDY	MEng	AAAB	AAA	43
ENGLISH†	BA (Hons)	AAAB	ABB	65
FINANCE†	BA (Hons)	AAAB/AAABBB	AAB	132
FORENSIC & ANALYTICAL CHEMISTRY	MChem	AABB/AAAC	ABB	100
FORENSIC BIOLOGY	BSc (Hons)	AABB/AAAC	BBB	94
FRENCH†	BA (Hons)	AAAB	ABB	66
HISTORY†	BA (Hons)	AAAB	ABB	67
HOSPITALITY & TOURISM MANAGEMENT†	BA (Hons)	AAAB/AAABBB	AAB	134
HUMAN RESOURCE MANAGEMENT†	BA (Hons)	AAAB/AAABBB	AAB	136
IMMUNOLOGY	MSci	AABB/AAAC	ABB	93
IMMUNOLOGY & MICROBIOLOGY	BSc (Hons)	ABBB/ABBC	BBB	93
IMMUNOLOGY & PHARMACOLOGY	BSc (Hons)	ABBB/ABBC	BBB	93
INTERNATIONAL BUSINESS	BA (Hons)	AAAA/AAAB	AAA	144
INTERNATIONAL BUSINESS & MODERN LANGUAGES	Masters	AAAA/AAAB	AAA	146
ITALIAN†	BA (Hons)	AAAB	ABB	68
JOURNALISM & CREATIVE WRITING†	BA (Hons)	AAAB	ABB	68
LAW†	BA (Hons)	AAAB	ABB	69
LAW	LLB (Hons)	AAAB	AAB	76
LAW with a MODERN LANGUAGE	LLB (Hons)	AAAB	AAB	78
MANAGEMENT†	BA (Hons)	AAAB/AAABBB	AAB	138
MANAGEMENT SCIENCE†	BA (Hons)	AAAB/AAABBB	AAB	140
MARKETING†	BA (Hons)	AAAB/AAABBB	AAB	142
MATHEMATICS	MMath	AAAB/AAABBC	ABB	104
MATHEMATICS	BSc (Hons)	ABBB/ABBC	BBB	104
MATHEMATICS & COMPUTER SCIENCE	BSc (Hons)	ABBB/ABBC	BBB	106
MATHEMATICS & PHYSICS	BSc (Hons)	ABBB/ABBC	BBB	106
MATHEMATICS & STATISTICS	BSc (Hons)	ABBB/ABBC	BBB	104
MATHEMATICS, STATISTICS & ACCOUNTING	BSc (Hons)	AAAA/AAAB	AAB	106
MATHEMATICS, STATISTICS & ECONOMICS	BSc (Hons)	ABBB/ABBC	BBB	106

# Open Day 2012

- 03.09.12 (6 – 8pm)
- 04.09.12 (9.30am – 2.30pm)

[www.strath.ac.uk/rio/visitingopportunities](http://www.strath.ac.uk/rio/visitingopportunities)

COURSE	DEGREE	HIGHERS	A LEVELS	PAGE
MATHEMATICS, STATISTICS & FINANCE	BSc (Hons)	ABBB/ABBCC	BBB	106
MATHEMATICS, STATISTICS & MANAGEMENT SCIENCE	BSc (Hons)	ABBB/ABBCC	BBB	106
MATHEMATICS with TEACHING	BSc (Hons)	ABBB/ABBCC	BBB	105
MECHANICAL ENGINEERING	MEng	AAAAB	AAA	46
MECHANICAL ENGINEERING	BEng (Hons)	AAAB	AAB	46
MECHANICAL ENGINEERING with AERONAUTICS	MEng	AAAAB	AAA	46
MECHANICAL ENGINEERING with FINANCIAL MANAGEMENT	MEng	AAAAB	AAA	46
MECHANICAL ENGINEERING with INTERNATIONAL STUDY	MEng	AAAAB	AAA	48
MECHANICAL ENGINEERING with INTERNATIONAL STUDY	BEng (Hons)	AAAB	AAB	48
MICROBIOLOGY	MSci	AABB/AAAC	ABB	93
NAVAL ARCHITECTURE	MEng	AAAA	AAB	50
NAVAL ARCHITECTURE & MARINE ENGINEERING	MEng	AAAA	AAB	50
NAVAL ARCHITECTURE & MARINE ENGINEERING	BEng (Hons)	AAAB	ABB	50
NAVAL ARCHITECTURE with OCEAN ENGINEERING	MEng	AAAA	AAB	50
NAVAL ARCHITECTURE with OCEAN ENGINEERING	BEng (Hons)	AAAB	ABB	50
NAVAL ARCHITECTURE with SMALL CRAFT ENGINEERING	MEng	AAAA	AAB	50
NAVAL ARCHITECTURE with SMALL CRAFT ENGINEERING	BEng (Hons)	AAAB	ABB	50
PHARMACOLOGY	MSci	AABB/AAAC	ABB	93
PHARMACY	MPharm	AABB	AAB	107
PHYSICS	MPhys	AAAB/AABBB	ABB	110
PHYSICS	BSc (Hons)	BBBB/ABBB	BBB	110
PHYSICS with TEACHING	BSc (Hons)	BBBB/ABBB	BBB	110
POLITICS†	BA (Hons)	AAAB	ABB	69
PRIMARY EDUCATION	BA (Hons)	AAAB	ABB	73
PRODUCT DESIGN & INNOVATION	BSc (Hons)	AAAB	ABB	40
PRODUCT DESIGN ENGINEERING	MEng	AAAA	AAB	40
PRODUCT DESIGN ENGINEERING	BEng (Hons)	AAAB	ABB	40
PRODUCTION ENGINEERING & MANAGEMENT	MEng	AAAA	AAB	38
PRODUCTION ENGINEERING & MANAGEMENT	BEng (Hons)	AAAB	ABB	38
PROSTHETICS & ORTHOTICS	BSc (Hons)	AAAB	ABB	52

COURSE	DEGREE	HIGHERS	A LEVELS	PAGE
PSYCHOLOGY‡	BA (Hons)	AAAB	ABB	71
SOCIAL WORK	BA (Hons)	BBBB/BBBCC	BBB	80
SOFTWARE ENGINEERING	BSc (Hons)	BBBB/ABBC	BBC	103
SPANISH‡	BA (Hons)	AAAB	ABB	71
SPEECH & LANGUAGE PATHOLOGY	BSc (Hons)	AABB/ABBBB	ABB	81
SPORT & PHYSICAL ACTIVITY	BSc (Hons)	BBBB/ABBC	BBC	83
SPORTS ENGINEERING	MEng	AAAA	AAB	40
SPORTS ENGINEERING	BEng (Hons)	AAAB	ABB	40
TEACHING, CHEMISTRY with	MChem	AABB/AAAC	ABB	100
TEACHING, MATHEMATICS with	BSc (Hons)	ABBB/ABBCC	BBB	105
TEACHING, PHYSICS with	BSc (Hons)	BBBB/ABBC	BBB	110

## Notes

1. Principal Subjects are listed alphabetically in this table. Please note also that subjects from other Faculties, particularly Business, can be studied as part of the BA Honours in Arts & Social Sciences.
2. Principal Subjects available in the Business School are listed alphabetically in this table. Please note that other subjects, particularly from the Faculty of Humanities & Social Sciences, can also be studied as part of the BA Honours in the Business School.
3. Grades are for first-year entry. Please see entry requirements tables at the end of each Faculty section for second-year entry grades and other qualifications.

‡ Principal Subject in the Strathclyde Business School

‡ Principal Subject in the BA in Arts & Social Sciences in the Faculty of Humanities & Social Sciences

# Your guides

Welcome to the Undergraduate Prospectus for entry in 2013. Four students who experienced it all last year will guide you through life at the University – studying, living in Glasgow and student social life.



## **Fiona Bingham**

**BA (Honours) French and Spanish**

**M**y course is designed to develop skills that companies are looking for in graduates. Next year, I'll go on a compulsory year abroad to France or Spain - I think this experience will equip me for life after university as well as making me an interesting candidate for employers. I've been really impressed by the quality of teaching and the approachability of my lecturers. When I first came to university, I wasn't sure what to expect but I've really enjoyed my time at Strathclyde and it has definitely exceeded my expectations.

[Fiona introduces Study and Learning, pg 5](#)



## **Euan MacAdie**

**BSc (Honours) Mathematics**

**M**y advice to any new students would be to get to Freshers week and experience the Union. There's so much going on and so many new people to meet. I volunteered as a student ambassador this year and went to the legendary International Ceilidh. I met lots of different people from around the world and we all had a fantastic time! Your social life at university is a bit like study because you get out what you put in.

[Euan introduces Strathclyde Life, pg 17](#)





Want to know more  
about life at Strathclyde?  
**Visit students talking**

## Conor Sheehan

### BSc (Honours) Prosthetics & Orthotics

**C**oming from Northern Ireland, I've found Scotland to be incredibly welcoming and friendly. I love Glasgow and the fact that the Strathclyde campus is right in the middle of it is a real bonus. The area surrounding the University is great and has everything from shopping to cultural attractions and nightlife. I recently visited the city's new Riverside Museum on the Clyde and reckon it's a building that sums up Glasgow: exciting, modern and fun. I'm enjoying my time here and have made friends for life.

Conor introduces *Welcome to Glasgow*, pg 11



## Yansheng Zhang

### BEng (Honours) Electronic & Electrical Engineering

**T**he University has helped me a lot. When I first arrived here from Shanghai I attended the international student welcome where I was given lots of information about how to adapt to university life, handle my finances and find my way about campus. There are regular meetings at the start of semesters and the help and support I have received has been invaluable.

Yansheng introduces *Here For You*, pg 25







# Study & Learning

I've really enjoyed my time at Strathclyde. It has definitely exceeded my expectations.

**Fiona Bingham**, French and Spanish



**USEFUL LEARNING** Page 6-7: Semesters, Credits, Assessment

**STUDYING AT UNIVERSITY** Page 8-9: CAPLE (Centre for Academic Practice & Learning Enhancement), Information Services, Your Library, Study Abroad Opportunities

# Useful learning

Our high-quality teaching and learning environment will help you achieve your goals. Innovative learning methods and state-of-the-art facilities are designed to give you the best possible University learning experience.



We offer a wide range of learning methods including lectures, tutorials, laboratories, problem-solving classes, integrative discussions, projects and placements.



As a Strathclyde student, you will experience:

- various styles of teaching space including interactive classrooms with data connections at each seat, allowing lecturers to be sure everyone is keeping up
- specialised facilities such as digital design and rapid prototyping facilities, virtual environment labs, top-flight engineering simulators, new multimillion pound chemical engineering facilities, laser and photonics facilities and multimedia language labs
- campus-wide wireless Internet access, numerous computer labs and Internet connections in all student residences

### Semesters

Teaching takes place over two 12-week semesters, each followed by a revision and examination period. There is normally a two-week break at Christmas and at the start of April, and the academic year ends in early June.

**Note:** Because of external requirements, certain courses in the Faculty of Humanities & Social Sciences do not follow the semester system.

### Credits

The University operates a uniform credit-based modular course system. The standard curriculum normally comprises six 20-credit classes per year, usually including certain compulsory classes and a proportion of electives. Students are normally expected to undertake 120 credits a year, which equates to 1,200 hours of study over the 30-week academic year, or roughly 40 hours per week. You choose the classes most suited to your interests and ambitions (within the requirements of specific degrees and constraints of timetabling). This means that, subject to approval, you may be able to change from one course to another, provided the new programme can accept, at least in part, the credits already gained.

### Assessment

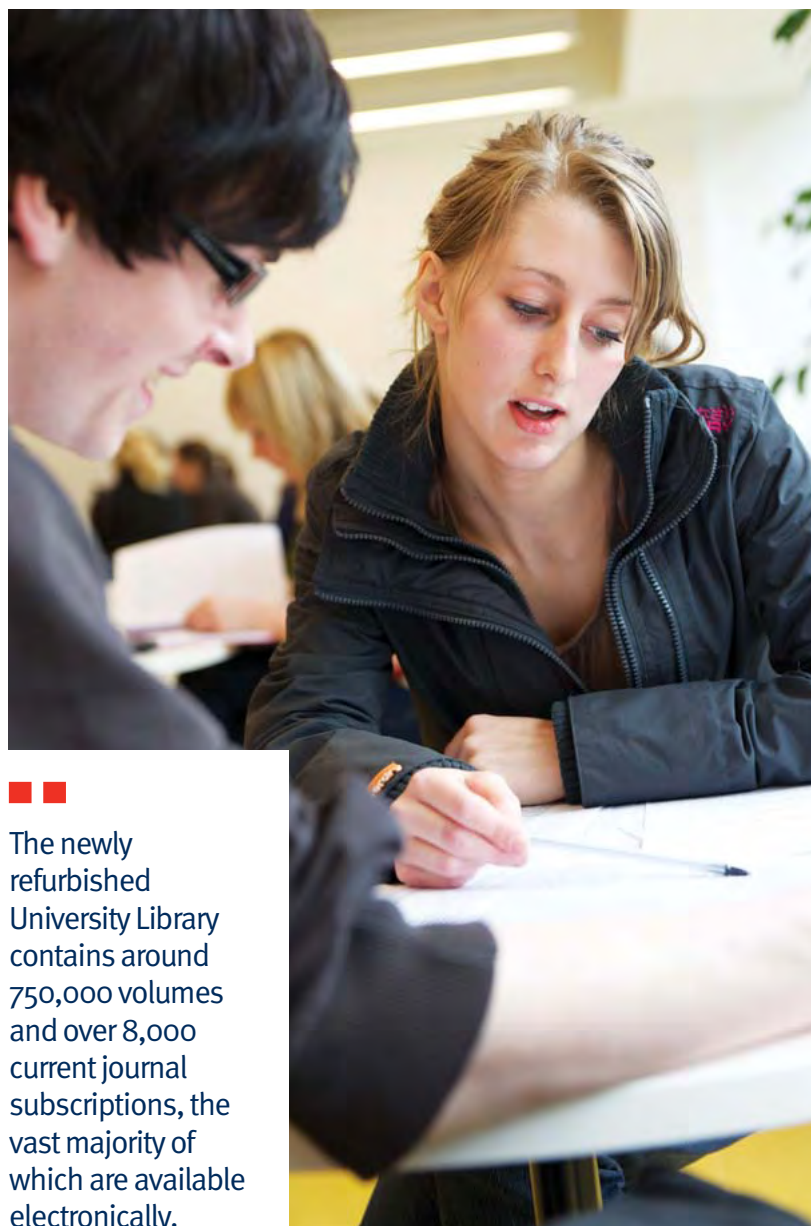
Your academic performance is assessed by University teaching staff, with external examiners checking and validating the marks awarded. The University pays close attention to first-year students, offering learning support and practical advice to help them improve study skills and manage their workload. In most courses, degree exams provide the main evidence for decisions regarding progress. The main exam diet is held each year in May/June and in August (for resits). Some courses also have an additional diet in January to assess first-semester classes. Degree exams are usually of two or three hours' duration and can involve solving problems, writing essays and/or completing multiple-choice answer tests.



Some classes are assessed solely on the basis of coursework – marks given for essays, worked examples, laboratory exercises and reports throughout the year provide a coursework mark. Generally, however, final exam and coursework marks are combined in varying proportions in assessing your performance. Some courses require you to undertake a research project – working individually and/or in groups, you will carry out library research, laboratory exercises or fieldwork, and present a report on the project.

# Studying at University

You will find that there is less supervision at university than at school and you will have more responsibility for getting things done on your own, supported by our help and expertise.



■ ■ ■  
The newly refurbished University Library contains around 750,000 volumes and over 8,000 current journal subscriptions, the vast majority of which are available electronically.

We help you adapt by giving you support and friendly advice on how to prioritise, manage your work and overcome any challenges. You will have your own Study Adviser – or another sympathetic member of staff – who will be there to talk you through any questions and help find solutions to any problems with your courses, studying, exams or personal pressures.

We offer a special learning support service called **CAPLE**, the **Centre for Academic Practice & Learning Enhancement**. The experienced team at CAPLE can work with you to develop your study skills and strategies. They can also help with time management, note-taking and presentation skills that will be invaluable while you are at university and in your future career.

[www.strath.ac.uk/caple](http://www.strath.ac.uk/caple)

If you are an international student in a full-time degree programme and would like to work on your English language skills, you can benefit from free class tuition of up to four hours a week for as long as you are at Strathclyde.

[www.strath.ac.uk/elt](http://www.strath.ac.uk/elt)

## Information Services

[www.strath.ac.uk/IS](http://www.strath.ac.uk/IS)

Information Services is at the heart of all University activities. We are responsible for IT and Library services on campus and provide support to all University staff and students. We continue to work towards the development of a 'Digital Campus' that underpins the University strategic aims in research, education and knowledge exchange.



[www.strath.ac.uk/studying](http://www.strath.ac.uk/studying)

### Your Library

[www.lib.strath.ac.uk](http://www.lib.strath.ac.uk)

The **University Library** has a wide variety of reader places suitable for individual or group study work. There are extensive Wi-Fi zones for laptop use and areas with fixed computers. The Library has around one million print volumes as well as access to over 144,000 electronic books and over 25,000 e-journals that can be used 24/7 from any suitably enabled computer.

The aim of the Library is to provide access to materials and information resources which will help you with your studies in a supportive learning environment. Expert and friendly staff are available to help you find information and can show you how to use the wide variety of resources on offer.

The University is currently investing in the Library to develop and shape facilities to meet your needs. This includes redevelopment of the building to offer modern, high tech facilities, provision of more group and individual spaces as well as an increased focus on acquiring digital content.

### IT Services

[www.strath.ac.uk/it](http://www.strath.ac.uk/it)

IT Services offers first class support services to students including:

- over 1350 campus PCs and more than 30 computer labs, many open 24/7
- dedicated IT Helpdesk and 24/7 out-of-hours IT support
- personal student email account with free email, web access and 50 megabytes of disk space
- selection of software for students to download free of charge
- access to an Online Resource Centre providing online tutorials and support 24/7
- mPEGASUS student web portal and iPhone app giving students access to their information on the go
- access to MyPlace, a virtual e-learning environment, where students can learn online and access course materials
- expert IT Training team offering free training in a number of key software packages

## Study Abroad

[www.strath.ac.uk/rio](http://www.strath.ac.uk/rio)

There are many opportunities to study abroad for either a full academic year or just one semester. Often, there is a choice between taking classes or doing a practical placement – either option will open the door to new experiences and new skills and will help make you even more employable. There are exchange opportunities available in the USA, Canada, Australia, New Zealand, Singapore, Hong Kong, Japan and Europe and most are available to students in any subject discipline. You will receive full academic credit for your year abroad, so there is no need to extend your studies. Various funding packages are available.



I was lucky enough to spend my third year in Angers, France and I am spending my fourth year in Rutigliano in Italy as a teaching assistant with the British Council. The chance to take two years abroad to really immerse myself in the languages and cultures I'm studying has been a fantastic opportunity. You don't get that experience from a book!

Kirstin Cleland, *BA (Honours) French & Italian*





# Welcome to Glasgow, Scotland

I love Glasgow and the fact that the Strathclyde campus is right in the middle is a real bonus.

Conor Sheehan, Prosthetics and Orthotics



**GLASGOW** Page 12-13: Live music, Cinema City, High Culture, Green Spaces, Sporting City

**SCOTLAND** Page 14-15: Location, Historic Towns, Great Outdoors

# Glasgow

From the days of wealthy tobacco merchants strutting through the Merchant City to the boutique shops and trendy bars of today, Glasgow has always been very much in touch with its sense of style.



Glasgow plays host to a range of major International music events including the MOBO awards and Celtic Connections. It has been dubbed 'Europe's Secret Capital of Music' by *Time Magazine* and is a UNESCO City of Music.



Strathclyde's campus sits at the centre of one of the UK's largest and most dynamic cities. Glasgow's music scene and its pubs, clubs and restaurants could keep you busy every night of the week. The city also offers the best retail experience in the UK outside of London. Many of the top designer labels have flocked to Glasgow in recent years, and they are all just a few minutes from the campus. The *New York Times* recently named the city as one of the top 12 places to see in the world in 2012. So why not come and see what all the fuss is about?

### Live Music

Glasgow is home to many bands that are now international names and there's loads of new talent coming out of the city's live music venues. So whether you are into rock or indie, punk or even country music, there's a place where you can give your eardrums a treat.

Close to the campus is the legendary Barrowland Ballroom: a music venue that was recently voted the best in the UK, and second best in the world in a poll of the UK's biggest bands.

### Cinema City

Glasgow has been dubbed 'the cinema city' and movies lie close to the heart of every Glaswegian. The city boasts the tallest cinema in the world, and the busiest in the UK, and over 20 films have been produced in the city in the last few years. In 2011 Strathclyde students were delighted to catch a glimpse of Brad Pitt on their lunch-break during the filming of the zombie blockbuster: *World War Z*.

### High Culture

As well as its thriving street culture, Glasgow has more than its fair share of high culture, with a year-round programme of arts and music. There are over 20 museums and galleries, and the city is home to Scottish Opera, the BBC Scottish Symphony Orchestra and Scottish Ballet.

The Scottish Exhibition and Conference Centre (SECC) is just one of many arts and entertainment venues located in the city. Home to a constant stream of international acts, conferences and exhibitions it offers something for everyone.

Located on the banks of the Clyde, the Riverside Museum celebrates Glasgow's renowned industrial heritage. The building itself is an engineering marvel designed by internationally acclaimed architect Zaha Hadid. The museum and its nearby neighbour Kelvingrove were among the UK's most visited museums in 2011.



### Green Spaces

People visiting Glasgow for the first time are often surprised at the amount of green space in the city centre – all the 19th-century landscaped parks and gardens are the perfect balance to the urban pace of life.

Glasgow Green is by far the oldest park in the city and contains the People's Palace and Winter Gardens. It is within five minutes walk from our campus and is the ideal place to relax, play sport or take in some culture.

Pollok Country Park is a 10-minute train journey from central Glasgow and has held the prestigious title of Best European Park. It is home to the world famous Burrell Collection and Pollok house: a National Trust Property.

### Sporting City

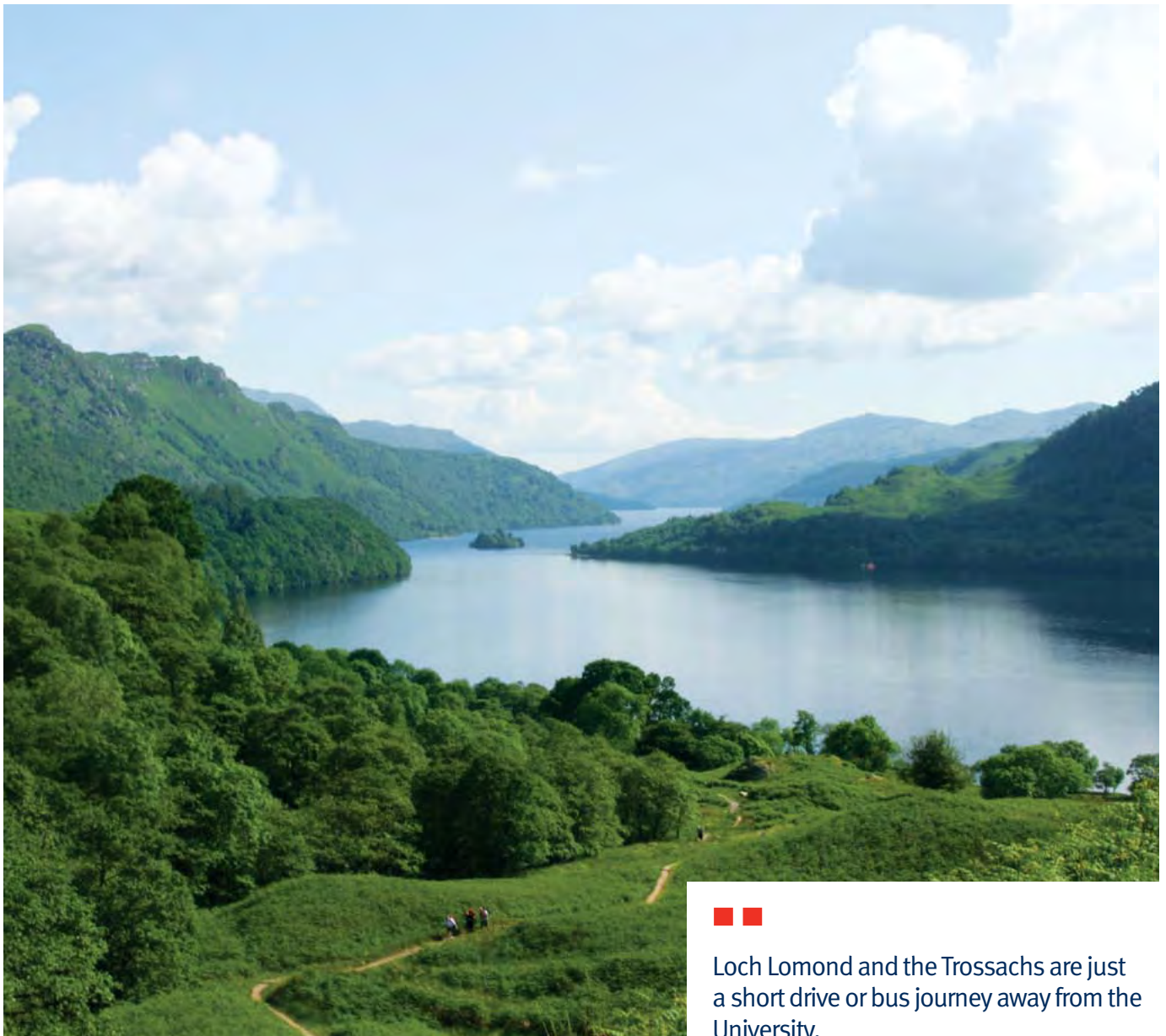
Glasgow is Scotland's sporting capital and will host the Commonwealth Games in 2014. If you are the active type the city has 23 pools and sports centres for you to choose from. These include future Commonwealth Games venues such as the Scotstoun Leisure Centre and National Badminton Academy. For winter sports there's no need to wait for snow because Glasgow's Xscape is home to one of the biggest indoor ski slopes in the UK.



Prepare to be caught under the spell of the Old Fruitmarket as soon as you walk through its doors! Hidden from view in the city's cultural Merchant City next to City Halls, it forms part of a complex dedicated to music and music education.

# Scotland

Scotland is an ancient and industrious country that has had a big impact on the modern world. With Glasgow as a base Strathclyde students are perfectly positioned to explore everything the country has to offer.



Loch Lomond and the Trossachs are just a short drive or bus journey away from the University.



### Location

Glasgow is just 40 minutes from the beauty of Loch Lomond and the start of the Highlands, 45 minutes by train from Edinburgh, a short hop by plane to London. It's a prime location, no matter where you would like to go... and our campus is five minutes from train, subway and bus stations, and just a quick 20 minutes' shuttle to Glasgow Airport.

### Historic Towns

#### Edinburgh (45 minutes by train)

Edinburgh is a UNESCO World Heritage Site and is widely regarded as one of the most beautiful cities in Europe. Scotland's capital is home to the Scottish Parliament as well as a dazzling array of museums, galleries and cultural venues. Edinburgh's famous Hogmanay street party is a must see and Strathclyde students often make the trip through to the capital to 'see in the bells' on New Year's Eve.

The city has inspired a score of famous literary creations including Sherlock Holmes and Harry Potter, and book lovers gather annually at the Edinburgh International Book Festival for author's talks and book signings. If you happen to be in Edinburgh in August then it will be impossible to avoid the world's largest arts festival: The Edinburgh Festival Fringe.

#### Stirling (50 minutes by train)

If you're a history lover then Stirling is a must see. Home to some of the most momentous events in Scottish history it is a place of romance, royal castles and monuments. The National Wallace Monument is a potent symbol of Scotland that offers stunning views over the southern highlands after a dizzying climb up its spiral staircase. While in Stirling also visit Stirling Castles Renaissance Palace to experience what life would have been like for a Scottish monarch in the 16th century.

### The Great Outdoors

#### Bag a Munro

While in Scotland why not get active and 'bag a Munro'. Munros are Scottish mountains over 3,000 feet and there are 283 to choose from. A great one to start with is Ben Lomond which is located on the shores of the world famous beauty spot Loch Lomond, only a 40 minute drive from Glasgow.

#### Ski Scotland

For snow sport loving students Scotland is the perfect destination with five high quality resorts to choose from. The ski resorts are ideal if you are a beginner as you will be able to take advantage of expert tuition. Advanced skiers can tackle the more challenging slopes of the Cairngorm resort, only a two-hour train journey from Glasgow.



#### The West Highland Way

During the summer months it has become a student tradition to walk the West Highland Way: a challenging trek of 93 miles through some of Scotland's most breath-taking scenery. Highlights of the walk include world famous destinations such as Loch Lomond and Glencoe. Starting in Milngavie on the outskirts of Glasgow, and ending in Fort William the terrain ranges from lowland moors and dense woodland to the romantic hills mountains of the Scottish Highlands.



The National Wallace Monument is a potent symbol of Scotland that offers stunning views over the southern highlands – well worth the dizzying climb up its spiral staircase.





# Strathclyde Life

Your social life at University is a bit like study because you get out what you put in.

**Euan MacAdie**, Mathematics



**ACCOMMODATION** Page 18-19: Am I eligible for on-campus accommodation

**STUDENTS UNION** Page 20-21: Where to find us, THE UNION A-Z, ASK, Clubs and Societies, Forums and Policy council, RAG, Halls Committees, Mature Students' Association, Faith Students' Facilities, Nightline, Sports Union, Student Media Centre, Out & about in the uni, Armed Forces Training Units, Freshers' Week

# Accommodation

The University has almost 2,000 rooms offering a variety of reasonably priced self-catered flats in the city-centre Campus Village and nearby Merchant City. This means you can live and study in the heart of Glasgow.



The Campus Village is predominately undergraduate. Our residences are mixed for both males and females with single sex flats, except for second year students, who can choose to live in a mixed group.



[www.strath.ac.uk/accommodation](http://www.strath.ac.uk/accommodation)

At Strathclyde, each hall of residence is only a few minutes' walk from the main University buildings, and all enjoy excellent access to facilities, including the library, Students' Union and the Sports Centre, as well as the shops, bars, clubs and cafés of Glasgow's city centre and Merchant City. During the year there are opportunities to join in many social events, ranging from traditional Scottish celebrations to international events. All rooms have network points offering free internet access.

**Am I eligible for on-campus accommodation?**

All students who live beyond 25 miles of the University, have satisfied every condition of entry to the University by 1 September and who will be attending for the whole academic year will be eligible for a place in residence. We will send you information including a brochure and application form in June but you can also check our website, [www.strath.ac.uk/accommodation](http://www.strath.ac.uk/accommodation) and apply online. If you live within reasonable commuting distance of the University, you can still apply but you may be put on a waiting list. There are also a number of spaces for continuing students. An offer of accommodation will follow once we know you have firmly accepted an unconditional academic place. For many students this will not be until August, when most of the exam results are announced.

**Costs**

The costs are reviewed annually. As a guide costs for 2011 are as follows:

Campus Costs	£ p/w
Murray Hall	83
Birkbeck Court	81
Forbes Hall/Garnett Hall	84
James Young Hall	107
Chancellors Hall	82
James Blyth Court	82
Thomas Campbell Court	82
James Goold Hall	107
Andrew Ure Hall	76

Barbara Manson  
Accommodation Services Manager  
t: +44 (0)141 548 3454  
e: [student.accommodation@strath.ac.uk](mailto:student.accommodation@strath.ac.uk)

# Halls of residence

The Campus Village is 95% undergraduate. Our residences are mixed for both males and females with single sex flats, except for second year students, who can choose to live in a mixed group.



■ ■

I stayed in halls in first year and found it was the perfect introduction to life at Strathclyde. It's great because you learn to be independent and make lots of new friends in a small space of time.

Amy Weatherup, *Mathematics, Statistics & Accounting*

# Students' Union

Whether you are looking for a great night out, or want to become involved in clubs, sports and volunteering opportunities, the Union is the place for you.



Getting involved in activities at the Union is a great way to meet people and make new friends. If you are interested in sport, there are about 40 teams and sports clubs you can choose from. There are also over 80 non-sporting clubs and societies at Strathclyde. The Executive (elected student representatives) ensure that the Association always represents the views of students and creates a fun and safe social environment.

#### Where to find us

The main Union shop building on John Street is the base for the Students' Association offices and services and student clubs and societies. There are bars and restaurants as well as the Union shop. Drop in to The Scene for a great menu and a comfortable place to eat, try one of the club nights in the Barony Bar, or have a game of pool in the Gameszone.



The St Paul's Building houses the Chaplaincy, Mature Students' Association, Strathclyde University Muslim Students' Association, as well as Fusion, the Strathclyde University Radio. It's just across the road from the main Union building, away from the hubbub of the Union's bars.

### THE UNION A-Z

In addition to the social events on offer, the Union offers a wide range of services and opportunities for students. Our Students' Association campaigns for the rights and interests of its students and have led successful campaigns and initiatives such as female only sports facilities and sessions, to free language classes. Below you'll find some of the opportunities on offer for you and services available to you as a Strathclyde student:

### ASK (Advice Support Knowledge)

ASK is the Union's free independent advice and support centre, the friendly staff can assist you with any personal, financial and academic problems, as well as helping with stress and any queries you may have in a confidential manner.

### Clubs and Societies

We have over 80 clubs and societies ranging from general interest, to course related ones, to political and more! There is something for everyone and it's a great way to make friends and gain skills and experience at the same time.

### Forums and Policy council

The Students' Association runs three open forums – Better Association, Better University and Better Glasgow – which are a chance for students to come and get their views heard and shape what we do. We also have a Policy Council which students can run to sit on, this is where all Union policy is passed and is a great way for students to get involved in what the Union does but also gain some valuable skills.

### RAG

RAG stands for Raise and Give and is the charities appeal at Strathclyde Union. Volunteers co-ordinate with local, national and international charities to raise money for campaigns. From bungee jumping to street collections, we do it all. You will have fun, and you'll also improve your teamwork and communication skills – great for the CV!

### Halls Committees

Living in Halls is quite an experience, especially if it's your first time away from home. Each Hall has a committee which organises social events and a Halls Convenor to offer assistance if needed.



### Mature Students' Association

Mature students can take advantage of free membership of the Mature Students' Association, which includes welfare and social representatives and a social programme throughout the year.

### Faith Students' Facilities

The Union provides space for many different faith groups, such as a prayer room in St Paul's (based opposite the Union) for the Strathclyde University Muslim Students' Association. St Paul's also houses the University Chaplaincy.

### Nightline

Nightline is a confidential telephone listening and information service which is run by students. Nightline is open Monday to Friday 7pm - 7am, and we are always looking for new volunteers – it's a great way to develop skills which can add to not only your CV but your experience at Strathclyde.

■ ■  
The 'speed meeting' event during Freshers' Week is a popular way of getting to know new people from around the world in a relaxed setting.

# Students' Union

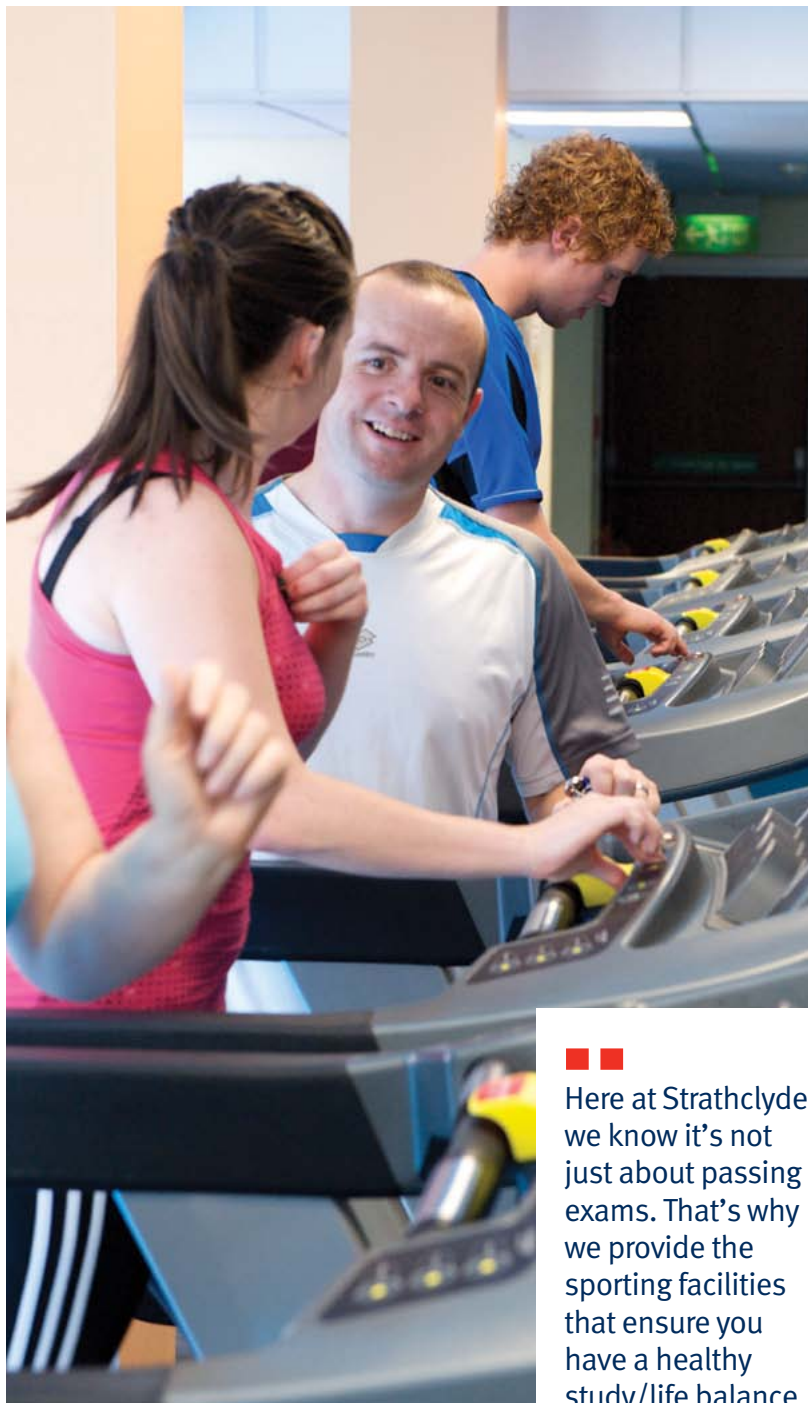
## Sports Union

With almost 1,000 members, the Sports Union is one of the best ways to get involved with life at university. We have over 40 clubs, ranging from football to fencing, shinty to skydiving and rowing to rugby. For the first two weeks of the year, you can take part in all these clubs free of charge, so there's no excuse not to try that sport you've always been curious about.

There are also plenty of opportunities for development; we help to provide clubs with coaching, transport and equipment, so whether you just want to try, compete against other universities or have dreams of something bigger, we're here to help you get there. Our teams compete regularly in leagues across Scotland with the chance to progress to knockout stages that could see them playing against the best in the UK. In addition many teams and clubs have trips away, either to compete or simply social tours.

## Student Media Centre

You can work on the student newspaper, the Strathclyde Telegraph; get involved with Strathclyde University Radio, Fusion or join Strathclyde Film Society— there are lots of opportunities to get started in media. We also have a Marketing and Communication Team who help our groups carry out research and publicise events.



Here at Strathclyde we know it's not just about passing exams. That's why we provide the sporting facilities that ensure you have a healthy study/life balance.



[www.sportsunion.strath.ac.uk](http://www.sportsunion.strath.ac.uk)

### Out & about in the uni

The University offers a range of opportunities for you to get involved in the vibrant arts, music and the social scene that you expect when you are in the centre of one of the UK's most lively cities.

The **University's Music Society** boasts an impressive range of large-scale musical groups open to all Strathclyde students. These include a full symphonic wind band and big band, two choirs – one of 40 members and one of 80 members – and a full-scale symphony orchestra. In addition there are a number of smaller groups and ensembles.

[www.strath.ac.uk/music](http://www.strath.ac.uk/music)

**Are you interested in sports?** Are you physically active, or would you like to be? The University provides excellent facilities and support for a wide range of sports and physical fitness. In addition to the team sports clubs run by the Sports Union, our **Centre for Sport & Recreation** provides:

- a range of fitness classes, fitness testing, health and lifestyle consultations, weight and fitness room inductions, sports coaching classes, and swimming and lifesaving classes an activities room for fitness classes and a range of martial arts
- a twin-court sports hall with six badminton courts and facilities for all major indoor games
- six squash courts
- a weight-training area with both multi-gym and free weights
- a cardiovascular suite with over 70 exercise machines, including cycles, rowing machines, treadmills and a Vibrogym
- a four-lane swimming pool
- a separate playing field (at Stepps) offering seven grass pitches for football and rugby, a blaes hockey pitch, an artificial cricket wicket and a sand-dressed, artificial grass, floodlit pitch for football, hockey and rugby

If you are a qualified athlete in a range of sports, you may be eligible for a bursary under the University Sports Bursary Programme, and, if you are a keen golfer, there are scholarships available through the University Golf Programme, supported by the Royal & Ancient Foundation.

[www.strath.ac.uk/sport](http://www.strath.ac.uk/sport)

### Armed Forces Training Units

At the University of Strathclyde we are very proud of our links with the British Armed Forces and the opportunities provided through our three service units: the Royal Naval Unit, Officers Training Corps and Air Squadron.

[www.strath.ac.uk/mec/serviceunits](http://www.strath.ac.uk/mec/serviceunits)

## Freshers' Week

The single most fun week in your University life – it's nine days jam-packed with fun from clubs and sports fairs, gigs, DJs and karaoke to speed meeting and International student events and much more! Information is sent out to all new and returning students. You can also find out what's going on from the website and Facebook.



Freshers' Week and the Students' Union are real highlights of studying there. I've had so many great experiences and met some fantastic people at the events they organise. There are lots of clubs and societies to get involved in so when I need a break from study I'm literally spoilt for choice.

Claire Sally, *English & Psychology*





# Here for you

There are regular meetings and the support I have received has been invaluable.

**Yansheng Zhang**, Electronic & Electrical Engineering



**STUDENT SUPPORT** Page 26-27: Advice Centre, Information & Advice Team, Student Financial Support Team, Chaplaincy, Disability Service, Student Counselling, Student Health Service, Careers

# Student support

We offer a range of services, advice and assistance to help you make the most of your time at Strathclyde. Our Student Handbook is a comprehensive directory of what we offer in services and support. You can download the current Handbook from our website (see above).



The Advice Centre is an invaluable asset and is run by staff who have an in-depth knowledge of issues that affect our students.

## Advice Centre

Our **Information & Advice Team** offers advice, guidance and information on all issues associated with student life to home and international students, especially those that concern welfare, academic, immigration and personal issues. The team is also responsible for supporting student transition, including induction and orientation activities for home and international students.

e: tier4@strath.ac.uk and  
e: infoandadvice@strath.ac.uk  
t: 0141 548 4273

Our **Student Financial Support Team** offer information and advice for students and applicants. We also offer advice to any students who encounter financial difficulties during their period of study. Among the funds available is the Discretionary Fund, which is used to help students who encounter serious financial hardship, and the Childcare Fund, which can assist some students with their childcare costs. The University is also able to make short-term loans available to help students in difficulty.

e: s.finance@strath.ac.uk  
t: 0141 548 2753  
[www.strath.ac.uk/studentfinancialsupport](http://www.strath.ac.uk/studentfinancialsupport)

The **Chaplaincy** offers hospitality to those of all faiths and none. The Chaplaincy Centre is a place where people of different faith traditions can exchange ideas and learn from each other, meet up with friends in the Ark Café, study in the library, worship in the Chapel, catch up with TV programmes or just relax in the common room. Many groups and societies use the Chaplaincy as their base (the Muslim Students' Association has its centre in the same building).

All students are welcome to use the Centre which is in St Paul's Building opposite The Union – feel free to drop in occasionally or make it your base.

e: chaplaincy@strath.ac.uk  
t: 0141 548 4144  
[www.strath.ac.uk/chaplaincy](http://www.strath.ac.uk/chaplaincy)



[www.strath.ac.uk/sees](http://www.strath.ac.uk/sees)

The **Disability Service** offers information, advice and assistance for applicants and students with disabilities. We support students with a range of disabilities including, but not limited to, dyslexia and specific learning difficulties, mental health issues, Asperger's Syndrome, long-term illnesses, and mobility or sensory impairment.

The Service can help you identify effective strategies, assistive equipment or software, facilities or services which can support you during your time at Strathclyde. This may include assistive technology training, mentoring, exam adjustments, attending a study skills session, or accessing support with communication or note-taking in lectures. We can also assist you to apply for Disabled Students' Allowance for funds for equipment and other support you may need during your studies.

Staff at the Disability Service welcome the opportunity to discuss with disabled applicants how to get the most out of their experience at Strathclyde.

e: [disabilityservice@strath.ac.uk](mailto:disabilityservice@strath.ac.uk)  
 Minicom: +44 (0)141 548 4739  
[www.strath.ac.uk/disabilityservice](http://www.strath.ac.uk/disabilityservice)

**Student Counselling** is a free and confidential service for students offering short term individual counselling during term time. Counselling can help with many personal, relationship or identity problems, including anxiety, stress and depression. If you are experiencing any difficulties which prevent you from making the most of your time at university you can make an appointment to talk with a professionally trained counsellor.

We offer personal development workshops during the academic year around common issues which get in the way of studying effectively, such as building confidence, managing stress, and procrastination. If you prefer to make use of self-help material, a wide range of informative and interactive resources is available on our website.

e: [student-counselling@strath.ac.uk](mailto:student-counselling@strath.ac.uk)  
 t: 0141 548 3510  
[www.strath.ac.uk/studentcounselling](http://www.strath.ac.uk/studentcounselling)

The **Student Health Service** helps students with physical or emotional health issues and provides advice on such matters as finding a doctor. The Service also monitors and advises on health matters relating to study and working environments within the University.

e: [studenthealth@strath.ac.uk](mailto:studenthealth@strath.ac.uk)  
 t: 0141 548 3916  
[www.strath.ac.uk/studenthealth](http://www.strath.ac.uk/studenthealth)

## Careers

[www.strath.ac.uk/careers](http://www.strath.ac.uk/careers)

The Careers Service is here to help with all aspects of your career choice and job search. Our expert team provides great advice and information throughout your time at Strathclyde and beyond graduation.



Help and advice is available from your first year onwards, whether you are looking for a part-time job, internship, work placement or you want to take advantage of the range of summer, volunteering and extracurricular opportunities that will provide added impact to your CV after graduation.

It is never too early to begin planning your future career, and we would encourage you to access the Careers Service at an early point in your studies in order to effectively research options available in both postgraduate study and employment. As the end of your degree approaches, we offer valuable help with job-search, postgraduate study applications, CV and job application preparation and interview techniques, to support you in taking the first steps towards your future career.

If you are not sure what you want to do with your degree, the Careers Service can also help you to identify career paths that could suit your qualifications, experience, skills and personality



# Strathclyde Business School

[www.strath.ac.uk/business](http://www.strath.ac.uk/business)



# Tony Stone

BA (Honours) Hotel & Hospitality Management

Founder, *Stoats Porridge Bars*

My time at Strathclyde was hugely beneficial. I've always tried to do things that I enjoy in life so my interest in food, beverage and hotels led me to a degree in Hospitality Management. Along with this interest I also greatly enjoyed entrepreneurship and dreamt of one day running my own business.

By doing joint Honours at Strathclyde I was able to introduce Marketing into my degree. This split in classes and timetables really helped to broaden my knowledge base in both business and hospitality and give me the foundations I needed for building a business.

Following graduation I undertook a two-year Knowledge Transfer Partnership project where I worked in an independent boutique hotel in Pembrokeshire

developing marketing strategies for a fast growing independent hotel. I moved back to Scotland to start Stoats, selling fresh porridge at music festivals. Since then the business has developed into a specialist company that supplies a range of oat-based products to retailers across the UK, as well as export to the US, Asia and Europe.

It's also worth noting that Glasgow is a fantastic city for being a student with plenty of gigs and nightlife!

This split in classes and timetables really helped to broaden my knowledge base in both business and hospitality

# Entry Requirements

■ International Students – see pg 159

■ Mature Students – see pg 156

■ Please refer also to Admissions, pg 148

Course	Minimum grades	Required subjects	Additional information
<b>BA (Honours)</b> <b>Accounting</b> (in any combination) <b>International Business</b> (with Accounting)	<b>Highers</b> 1st sitting: <b>AAAA</b> or <b>AAABB</b> 2nd sitting: <b>AAAAAB</b> or <b>AAAABBB</b> <b>A Level: AAA</b> <b>IB: 36</b> <b>HNC/HND:</b> Entry considered on an individual basis; contact Business School Admissions (see right) <b>Irish Leaving Certificate: AAABBB</b> at Higher level, including English and Maths	<b>English:</b> Higher (B) or GCSE English Language (A) or IB (SL5)* <b>Maths:</b> Higher (A) or A Level (A) or IB (HL6)	<b>Advanced Highers</b> An Advanced Higher and a Higher are given equal credit and the grades for each qualification count towards the total grades required.  <b>Deferred Entry</b> Deferred entry not accepted  <b>Admission to Honours</b> All students will be admitted as potential Honours students. Students may exit with a Bachelor of Arts degree at the end of year three of the Honours programme if they have accumulated at least 360 credits and satisfied the appropriate specialisation requirements. For admission to the final year of the Honours course, a student must have qualified for the award of the Bachelor of Arts degree and achieved an approved standard of performance.
<b>BA (Honours)</b> <b>Business Enterprise</b> <b>Business Law</b> <b>Business Technology</b> <b>Economics</b> <b>Finance</b> <b>Hospitality &amp; Tourism Management</b> <b>Human Resource Management</b> <b>Management</b> <b>Management Science</b> <b>Marketing</b>	<b>Highers</b> 1st sitting: <b>AAAB</b> or <b>AABBB</b> 2nd sitting: <b>AAAAAB</b> or <b>AAAABBB</b> <b>A Level: AAB</b> <b>IB: 36</b> <b>HNC/HND:</b> Entry considered on an individual basis; contact Business School Admissions (see right) <b>Irish Leaving Certificate: AABBBB</b> at Higher level, including English and Maths	<b>English:</b> Higher (B) or GCSE English Language (A) or IB (SL5)* <b>Maths:</b> Standard Grade Credit (1) or Int 2 (A) or GCSE (A) or IB (SL5)* <b>Maths for combinations with Mathematics &amp; Statistics:</b> Higher (A) or A Level (B) or IB (HL6) <b>Maths for combinations with Finance, Management Science:</b> Higher (B) or A Level (B) or IB (HL6)	An Advanced Higher and a Higher are given equal credit and the grades for each qualification count towards the total grades required.  <b>Deferred Entry</b> Deferred entry not accepted  <b>Admission to Honours</b> All students will be admitted as potential Honours students. Students may exit with a Bachelor of Arts degree at the end of year three of the Honours programme if they have accumulated at least 360 credits and satisfied the appropriate specialisation requirements. For admission to the final year of the Honours course, a student must have qualified for the award of the Bachelor of Arts degree and achieved an approved standard of performance.
<b>BA (Honours)</b> <b>International Business</b> (without Accounting)	<b>Highers</b> 1st sitting: <b>AAAA</b> or <b>AAABB</b> 2nd sitting: <b>AAAAAB</b> or <b>AAAABBB</b> <b>A Level: AAA</b> <b>IB: 36</b> <b>HNC/HND:</b> Entry considered on an individual basis; contact Business School Admissions (see right) <b>Irish Leaving Certificate: AAABBB</b> at Higher level, including English and Maths	<b>English:</b> Higher (B) or GCSE English Language (A) or IB (SL5)* <b>Maths:</b> Standard Grade Credit (1) or Int 2 (A) or GCSE (A) or IB (SL5)* <b>Maths for combinations with Finance, Management Science:</b> Higher (B) or A Level (B) or IB (HL6)	An Advanced Higher and a Higher are given equal credit and the grades for each qualification count towards the total grades required.  <b>Deferred Entry</b> Deferred entry not accepted  <b>Admission to Honours</b> All students will be admitted as potential Honours students. Students may exit with a Bachelor of Arts degree at the end of year three of the Honours programme if they have accumulated at least 360 credits and satisfied the appropriate specialisation requirements. For admission to the final year of the Honours course, a student must have qualified for the award of the Bachelor of Arts degree and achieved an approved standard of performance.
<b>Masters in</b> <b>International Business and Modern Languages</b>	<b>Highers</b> 1st sitting: <b>AAAA</b> or <b>AAABB</b> 2nd sitting: <b>AAAAAB</b> or <b>AAAABBB</b> <b>A Level: AAA</b> <b>IB: 36</b> <b>HNC/HND:</b> Entry considered on an individual basis; contact Business School Admissions (see right) <b>Irish Leaving Certificate: AAABBB</b> at Higher level including English and Maths and two languages	<b>English:</b> Higher (B) or GCSE English Language (A) or IB (SL5)* <b>Maths:</b> Standard Grade Credit (1) or Int 2 (A) or GCSE (A) or IB (SL5)* <b>Maths for combinations with Finance, Management Science:</b> Higher (B) or A Level (B) or IB (HL6) Two languages (French, Spanish, Italian) at Higher (AB), or A Level in the Modern Language to be studied (B) or IB (HL6)	An Advanced Higher and a Higher are given equal credit and the grades for each qualification count towards the total grades required.  <b>Deferred Entry</b> Deferred entry not accepted  <b>Admission to Honours</b> All students will be admitted as potential Honours students. Students may exit with a Bachelor of Arts degree at the end of year three of the Honours programme if they have accumulated at least 360 credits and satisfied the appropriate specialisation requirements. For admission to the final year of the Honours course, a student must have qualified for the award of the Bachelor of Arts degree and achieved an approved standard of performance.
<b>Three-year BA (Honours)</b> <b>Business Administration</b>  (new degree approved since the printed prospectus was produced)	<b>Advanced Highers: AAB</b> <b>A Level: AAA</b> <b>Irish Leaving Certificate: AABBBB</b> at Higher level, including English and Maths	<b>English:</b> Higher (B) or GCSE English Language (A)  <b>Maths:</b> Higher (B) or GCSE English Language (A)	An Advanced Higher and a Higher are given equal credit and the grades for each qualification count towards the total grades required.  <b>Deferred Entry</b> Deferred entry not accepted  <b>Admission to Honours</b> All students will be admitted as potential Honours students. Students may exit with a Bachelor of Arts degree at the end of year three of the Honours programme if they have accumulated at least 360 credits and satisfied the appropriate specialisation requirements. For admission to the final year of the Honours course, a student must have qualified for the award of the Bachelor of Arts degree and achieved an approved standard of performance.

\* revised May 2012 since the printed prospectus was produced



# Strathclyde Business School

Do you have the talent and drive to join the business elite? If so, Strathclyde Business School has the expertise to help you make it happen. If you mean business, we have everything you need.

If you're seeking an exciting and successful career, Strathclyde Business School (SBS) is one of the largest and longest established business schools in Europe and our graduates are in high demand in both the public and private sectors, in the UK and elsewhere. A small percentage of business schools world-wide hold triple accreditation status for the quality of their degree courses and SBS is one of them. We have been rated as 1st in Scotland, top 8 in the UK and top 25 in Europe, in the Financial Times recent ranking of the top European Business Schools (Dec 2011). In the most recent Research Assessment Exercise the Business School was rated top for research in Scotland and No 7 in the UK. This is the place to school yourself in business excellence.

## Internationally Accredited

Accreditation of business schools offers you an assurance of the quality of education on offer, the facilities, the staff and the student body. It also gives your degree a recognised value to employers around the world. SBS has accreditation from the three leading international organisations that review and monitor the quality of business schools:

- The Association to Advance Collegiate Schools of Business ([www.aacsb.edu](http://www.aacsb.edu))
- The European Quality Improvement System ([www.efmd.be](http://www.efmd.be))
- The Association of MBAs ([www.mbaworld.com](http://www.mbaworld.com))

We can offer you:

- practical relevance in course content and transferable skills
- up-to-date knowledge of business and management techniques
- high degree of student choice and flexibility
- excellent student support

- learning through involvement with real business activities
- creative and innovative teaching and learning methods

## Degree Structure

We offer a broad range of business subjects across three types of degree programme: flexible, cross-disciplinary, and specialist.

Should you choose one of our flexible degrees, you will be able to study your chosen subjects from day one, but the broad-based first year means that you will study other subjects. You may find that you wish to specialise later in subjects other than those for which you applied and our flexible degree structure allows you to do this. You also have the opportunity to take elective classes from elsewhere in the University.

Our cross-disciplinary degree, while having a greater number of prescribed classes, is based on the same degree framework, so whichever Business School degree you choose, you will enjoy a wide choice of subjects.

## Flexible Degrees

On our flexible degrees you choose a number of subjects to study in your first year. This offers you the chance to try new subjects, some of which you will not have experienced at school or college. At the beginning of second year you decide which two of these subjects you will continue studying into Years 2 and 3. If you know which subject (or subjects) you wish to study, you will find the appropriate UCAS codes on the following pages.

However, you can apply under general entry code N100 if you would prefer to choose your first-year subjects once you arrive and have spoken to an Adviser of Study. If you wish to study Accounting you should apply under N400 or one of the other Accounting codes listed at the course entries on the following pages.

## Key facts

### Outstanding reputation

Strathclyde Business School is internationally respected as one of the most innovative and largest business schools in Europe.

### We're flexible

Our degree structure allows you the flexibility to choose the ideal combination of courses for your chosen career path.

### You can study abroad

Our degrees allow you to spend part of your course studying in Europe or overseas.

### Business comes first

We place emphasis on real business issues. Our Management Development Programme, which is central to all our degrees, is highly valued by employers.

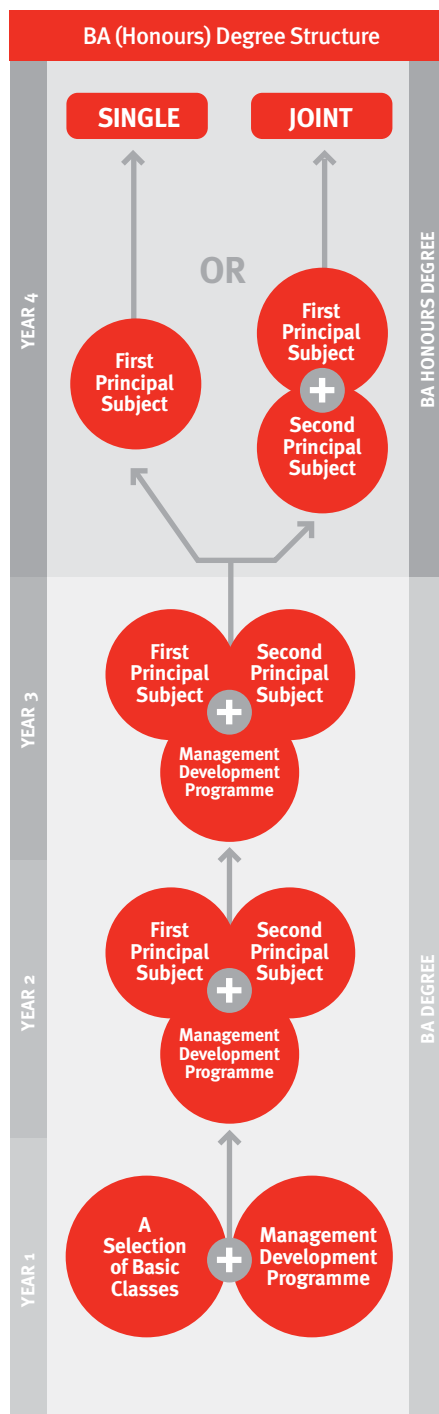
### Teaching and research excellence

SBS scores consistently high in official external ratings and student feedback, most recently rated in the Research Assessment Exercise at No 1 in Scotland and No 7 in the UK. Many courses are accredited by professional institutions.

### World-class accreditation

A small percentage of business schools world-wide hold triple accreditation status and SBS is one of them.





### Cross-Disciplinary and Specialist Degrees

In addition to the flexible degree framework, we also offer a cross-disciplinary degree (Masters in International Business & Modern Languages) and a specialist degree (BA (Honours) in International Business).

The cross-disciplinary course is structured in a similar way to the flexible degrees, allowing you to choose from a range of Business subjects and combine them with Modern Languages. The specialist (Honours) in International Business enables you to study Business subjects in an international context and incorporates a period of one semester abroad in Year 3.

Applications to these degrees should be made using the UCAS codes indicated at the relevant course entry. Subject choice is made at the beginning of the first semester, with the help of the Advisers of Study.

### Management Development Programme

At the heart of all our degrees is our Management Development Programme (MDP). Running through Years 1 to 3, the MDP covers areas of understanding that are highly sought after by today's employers, putting our degrees in a class of their own. You develop knowledge and skills in key areas of management. In addition you will acquire essential team-working, communication and decision-making skills and become confident in analysing and presenting information. Visit [www.strath.ac.uk/business/mdp](http://www.strath.ac.uk/business/mdp) for more information about the programme.

### International Opportunities

Coming to SBS will open up a number of opportunities for you to study abroad, without adding to the length of your degree. Depending on your degree, you may have the opportunity to focus on international business issues, or



to develop skills in a foreign language. And because we are internationally accredited and have staff and students from all over the world, even if you choose not to spend a period of study abroad, your SBS degree will be valued by employers the world over.

### General Business School Admissions Information

Entry requirements are summarised at each course entry and are shown in detail on pg 120. We welcome applications from all qualified applicants and from all those who are progressing towards our admissions requirements.

The following are guidelines to help you choose your Higher subjects or other qualifications which you will study in preparation for entrance to our degree programmes:

- you do not need to have studied business subjects before coming to Strathclyde Business School
- a broad range of subjects across different disciplines is preferred (avoid related subjects with a high proportion of common subject matter, eg Biology and Human Biology)
- if you do not achieve the entry standard in fifth year, you are welcome to apply, as long as you are able to demonstrate that you will be able to achieve an overall higher level by the end of your sixth year

### Second-Year Entry

It may be possible for candidates with relevant Advanced Highers or A Levels to enter directly into Year 2. If you wish to explore this route, please contact Business School Admissions (details right) for advice on curriculum choice before beginning advanced studies.

### Other Qualifications

We will be pleased to consider your application if you have qualifications different from SQA Highers and GCE A Levels. Students who have studied in our undergraduate degree programmes in the past have included people with Irish Leaving Certificates, European Baccalaureates and International Baccalaureates. Some overseas school-leavers

### Subject combinations

#### Accounting\*

J	Business Enterprise									
J	J	Business Technology								
J	J	J	Economics							
J	J	J	J	Finance						
J	J		J	J	Hospitality & Tourism Management					
J	J	J	J	J	J	Human Resource Management				
J	J	J	J	J	J	J	Management			
J	J	J	J	J	J	J	J	Management Science		
J	J	J	J	J	J	J	J	J	Marketing	
J	J		J	J	J	J	J	J	Business Law+	Business Subjects
			J			J		J	Psychology +	NON-Business Subjects
J			J	J			J		Maths & Statistics +	

- J Combinations which may be taken jointly for the BA Honours degree and for the BA degree
- + Available as a second subject only
- \* To study Accounting, you must be admitted to a course which includes Accounting

may require a foundation course. Please contact Business School Admissions for advice. If you are offering such qualifications, we expect you to have similar levels of overall ability, eg generally equivalent to a B pass (or an average of 60%) and of course we will ask you to show your ability in any specific subjects required for a particular degree programme. For example, some programmes require a higher level of ability in Maths, and some a level of proficiency in Modern Languages.

### Mature Students

Business admission routes for mature students include Access courses, HNCs, HNDs, Open University Credits, Highers, Advanced Highers, AS and A Levels (which must be recent). If you are considering applying and do not have recent formal qualifications but your previous experience demonstrates an ability to cope with the academic demands of a degree programme then please see further information for Mature Students on pg 156 or contact Business School Admissions (see right).

### Pre-Entry Access Course

This part-time one-year evening course for mature students is taught and examined within the University (see pg 149) and is accepted for entry by many degree programmes. Similar pre-entry courses offered by other UK universities may also be accepted.

### Contact

Business School Admissions  
t: +44 (0)141 548 4114  
e: sbs-adviser@strath.ac.uk

**BA (Honours)****Accounting****UCAS N400**

Highers 1st sitting

**AAAA or AAABB**

Highers 2nd sitting

**AAAAAB or AAAABBB**A Levels **AAA****Joint Honours****Business Enterprise****UCAS NN41****Business Law****UCAS NM42****Business Technology****UCAS NG42****Economics****UCAS NL41****Finance****UCAS NN43****Hospitality & Tourism Management****UCAS NN48****Human Resource Management****UCAS NN46****Management****UCAS NN42****Management Science****UCAS GN24****Marketing****UCAS NN45****Maths & Statistics****UCAS NG41**

For full entry requirements,  
please see table on page 120.

**Contacts**

Business School Admissions

**t:** +44 (0)141 548 4114**e:** sbs-adviser@strath.ac.uk

Course-specific enquiries

**t:** +44 (0)141 548 3261**e:** accfin@strath.ac.uk

# Accounting

The Department of Accounting & Finance has been ranked 1st in the UK for Accounting & Finance by The Sunday Times University Guide 2011. We have also has been ranked 1st in Scotland and No 4 in the UK in the Complete University Guide Subject League Table for 2011.

**Y**ou can study Accounting in combination with a range of business subjects at Strathclyde. In the majority of study combinations, Accounting is fully accredited for entry to the Institute of Chartered Accountants of Scotland as well as offering possible exemptions to other professional bodies, eg ACCA and CIMA. In-depth understanding of a second subject will complement your accounting studies and is particularly valued by employers.

You will learn that accounting concerns the preparation, presentation and interpretation of financial information to enable investors, lenders, management, employees, government and others to make effective decisions. You will learn how to read and interpret accounting information in the annual reports of businesses and the financial information within the public sector and become familiar with the principles and practice of presenting information to those who manage all types of organisations.

You will explore how accounting can be developed to meet the needs of society, in addition to providing information to investors. In your Honours year you will be able to study such issues in class and then investigate them further in a project for your dissertation.

**Course Description**

**Year 1:** Provides an introduction to accounting and finance, complemented with study of economics and law.

**Year 2:** Develops the specialisms of financial and management accounting. We encourage you to look behind the techniques used

by accountants in order to develop an understanding of the influences that develop and shape accounting practice. There is an opportunity to study taxation.

**Year 3:** Includes advanced topics in financial and management accounting and also the study of auditing. By the end of this year you will normally have completed the accreditation requirements for professional accountancy bodies, provided you have taken the classes prescribed for the accredited pathway.

**Year 4:** You can either specialise in accounting as a single Honours subject or continue to a joint Honours degree in accounting with your other principal subject. Honours classes include Management Accounting Theory & Practice, Accounting Information Systems, Sustainability Accounting, Theory & Practice, Strategic Accounting & Financial Management in Entrepreneurial Firms, Public Sector Accounting, Accounting Theories, Accounting & Risk, Corporate Governance, Contemporary Issues in International Financial Reporting, Understanding 21st-century Accounting Technologies & Institutional Structures, Integrative Studies in Management & Accounting, Accounting Ethics, Auditing Theory & Practice and Taxation.

**Teaching and Assessment**

Our teaching methods encourage student participation. Regular student presentations develop oral and written communication skills. In Years 1 to 3 lectures deliver the essential knowledge and understanding required by the entire class but our main focus is on regular small-group tutorials which develop interaction and exchange of views on the



issues around work you prepare in advance. In Year 4 most teaching is seminar-based with students leading the discussions, guided by an experienced member of staff whose research and professional interests are relevant to the work of the particular class.

Assessment of coursework ranges from weekly quizzes to investigative projects and poster sessions. Exams remain an essential component of assessment, mixed with coursework to ensure that all learning outcomes are evaluated appropriately.

### Careers

In recent years, nearly all Accounting and Finance graduates entered relevant professional employment. Santander, Deloitte,

Ernst & Young, HSBC, KPMG, BAE Systems, Norwich Union, PricewaterhouseCoopers and The Royal Bank of Scotland are just a few of the well-known organisations who seek our Accounting graduates, many of whom obtain training contracts leading to a professional Accounting qualification.

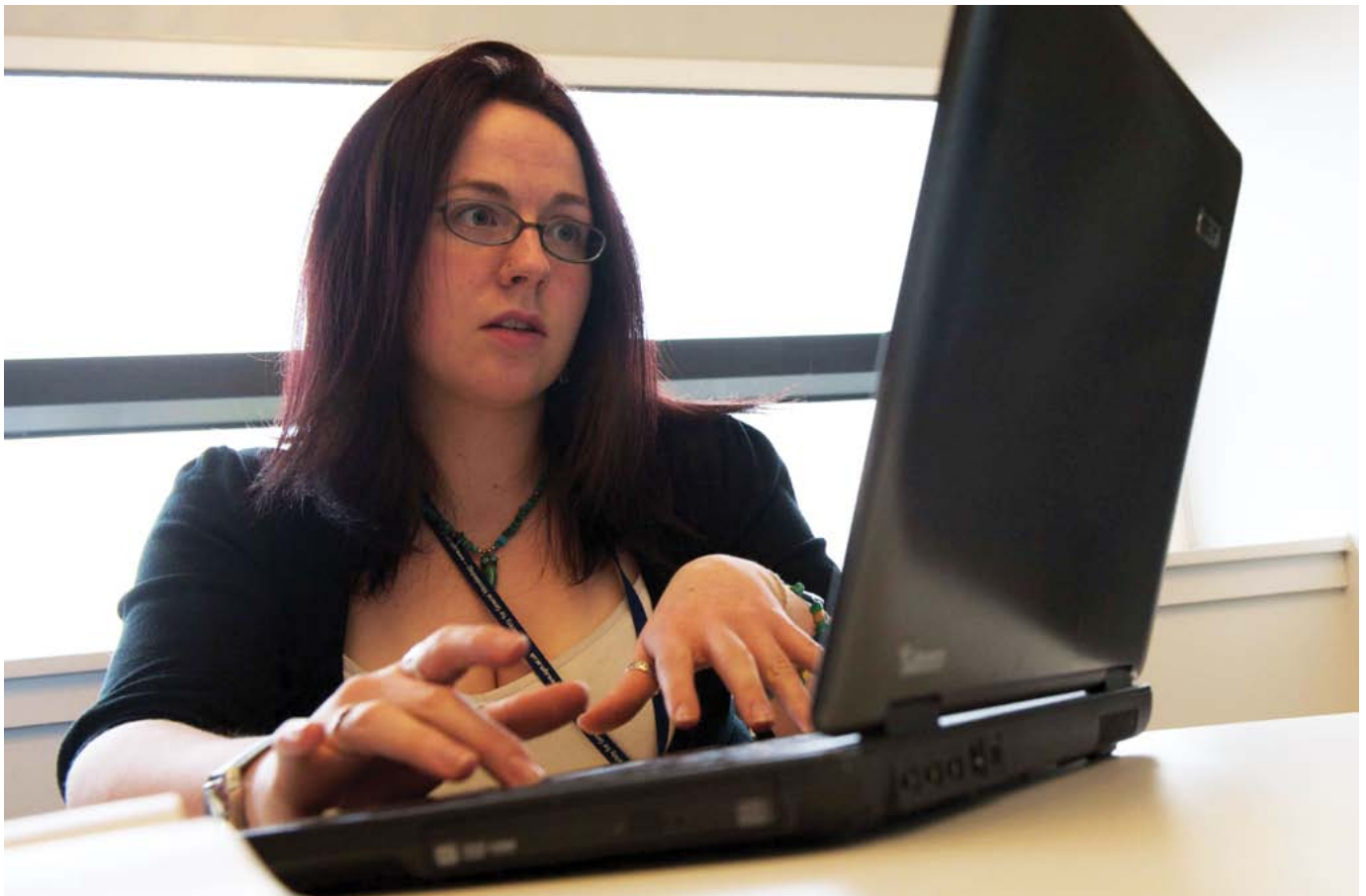
Some graduates enter branches of commerce such as banking, stockbroking and fund management, while others hold positions of responsibility in industry, commerce and the profession.

### Subject Combinations with Accounting

Accounting can be studied to single Honours, or joint Honours in combination with the subjects listed left. To apply for any of these combinations, you should use the code specified. If you wish to study Accounting but are unsure about other subjects, you should apply under Accounting (**UCAS: N400**).

Accounting can also be studied in the following Business School programme (please note this degree is not accredited by the Institute of Chartered Accountants of Scotland):

- BA (Honours) International Business (**UCAS: NN14**)



**BA (Honours)****UCAS N190**

Highers 1st sitting

**AAAB or AABBB**

Highers 2nd sitting

**AAAABB or AAABBBB**A Levels **AAB****Joint Honours****Accounting****UCAS NN41****Business Law****UCAS MN21****Business Technology****UCAS NG12****Economics****UCAS NL11****Finance****UCAS NN13****Hospitality & Tourism Management****UCAS NN1V****Human Resource Management****UCAS NN16****Management****UCAS NN12****Management Science****UCAS NN1G****Marketing****UCAS NN15**

For full entry requirements,  
please see table on page 120.

**Contacts**

Business School Admissions

**t:** +44 (0)141 548 4114**e:** sbs-adviser@strath.ac.uk

Course-specific enquiries

**t:** +44 (0)141 548 3482**e:** entrepreneur@strath.ac.uk

# Business Enterprise

[www.strath.ac.uk/business](http://www.strath.ac.uk/business)

The Business Enterprise pathway will equip you with real-world skills that are highly valued in an increasingly competitive employment market, opening up new opportunities for venture creation, business acquisition and the transformation of existing organisations and enterprises.

**B**usiness enterprise is about the creation of wealth, the practice of creativity and resourcefulness and the exploitation of change. It focuses on the ability of entrepreneurship to challenge accepted ways of doing things and disrupt established markets and organisations through new venture creation. It lies at the heart of Scotland's future economic and social prosperity and its ability to compete. Business enterprise is designed for students with three broad career interests – those who want to start a new enterprise, those who wish to take over the management of an existing organisation or business and those who see themselves taking up leadership positions in a wide variety of business settings. The programme will enable you to gain an awareness of both academic and practitioner perspectives. Emphasis is placed on developing an understanding of the specific sectors within which the realities of business and organisational life take place.

**Course Description**

**Year 1:** Provides an understanding of the radical nature of entrepreneurship and its ability to change industries, markets and society, introducing the vocabulary, concepts and practice of enterprise through the core class – Entrepreneurship: Theory & Practice. In the second semester you participate in the Value Challenge – a group assignment to give you real life experience of creating value through entrepreneurial activity.

**Year 2:** Introduces you to key entrepreneurial processes. You take two core classes – Creativity & Opportunity Recognition and New Venture Creation and the option of taking Introduction to Business Start-Up (computer-based simulation class) or Knowledge, Science & Technology-based Businesses as electives.

**Year 3:** Examines entrepreneurial processes and enterprising skills in different contexts. There are two core classes – Entrepreneurial Capital & Resources and Venture Management, Strategy & Growth (consulting project) and you can choose either Corporate Entrepreneurship or Social & Community Entrepreneurship as electives.

**Year 4:** Core classes – Venture Management in Practice (placement), Family Business: Theory & Practice, Issues and Trends in Entrepreneurship and International Entrepreneurship. You will also undertake a dissertation on an aspect of enterprise.

**Teaching and Assessment**

Our interactive teaching includes class discussions, seminars, workshops, tutorials and participative lectures. Emphasis is placed on individual and team assignments, analysis of case studies, reflective learning and various forms of direct engagement with real entrepreneurs and external companies.

**Subject Combinations**

Business Enterprise can be studied to single Honours, or joint Honours in combination with the subjects listed left. To apply for any of these combinations, you should use the code specified. If you wish to study Business Enterprise but are unsure about other subjects, you should apply under Business Enterprise (**UCAS: N190**).

Business Enterprise can also be studied in the following Business School programme:

- BA (Honours) International Business (**UCAS: N120**)
- Masters in International Business & Modern Languages (**UCAS: NR19**)



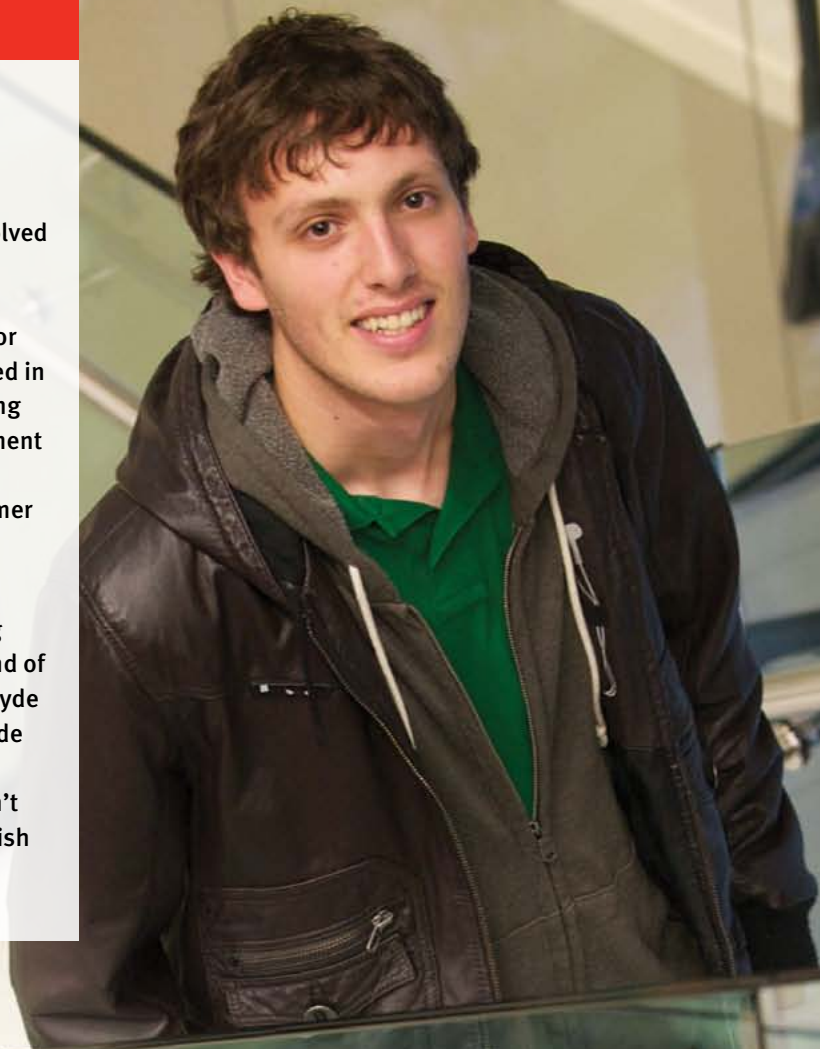
## Student profile

### David Neil

Business Enterprise

Part of course work in third year, involved placements working as consultants within a Glasgow-based firm. The objective was to develop strategies for growth and apply what we had learned in university to the business, culminating in a presentation to the top management team. It was a valuable experience which led to me being offered a summer internship with the company.

University prepares you well from a social perspective as well developing your soft skills. There's a unique blend of personalities and cultures at Strathclyde and I've learned how to work alongside them all. Through networking at university I have met people I wouldn't otherwise have met and who I may wish to do business with in the future.



**BA (Joint Honours only)**

Highers 1st sitting

**AAAB or AABBB**

Highers 2nd sitting

**AAAABB or AAABBBB**A Levels **AAB****Accounting****UCAS NM42****Business Enterprise****UCAS MN21****Economics****UCAS LM12****Finance****UCAS NM32****Hospitality & Tourism Management****UCAS MN28****Human Resource Management****UCAS NM62****Management Science****UCAS GM22****Marketing****UCAS NM52**

For full entry requirements,  
please see table on page 120.

**Contacts**

Business School Admissions

**t:** +44 (0)141 548 4114**e:** sbs-adviser@strath.ac.uk

Course-specific enquiries

**t:** +44 (0)141 548 3738**e:** hass-courses-lgpp@strath.ac.uk

# Business Law

[www.strath.ac.uk/business](http://www.strath.ac.uk/business)

Business Law is concerned with the aspects of legal regulations which are of particular relevance to the world of industry and commerce. The programme is tailored to equip you with a knowledge of those aspects of law which will be useful in a business context.

**B**usiness Law introduces you to the general principles of commercial law and to aspects of legal regulation which are especially relevant to the business

community. These include company law, labour law, competition law, European Union law, environmental law, intellectual property law and human rights law.

The study of Business Law at Strathclyde is regarded not only as a vocational study but also as a broad liberal education. It is an interdisciplinary degree programme offered by the Business School together with the Law School in the Faculty of Humanities & Social Sciences, one of Scotland's leading providers of legal education.

Business Law can be studied as a second subject only, within Strathclyde Business School's BA programme. This means you can study Business Law as a joint Honours option only. Single Honours study of Business Law is not available.

**Note:** Taking Business Law within the BA degree will not qualify you for entry into the legal profession (For a professional qualification in Law, see LLB Law course entry on pg 76).

**Course Description**

**Year 1:** The first-year core Business Law class introduces the main areas of legal study. This includes law-making in the UK Parliament and the devolved Parliament in Scotland, court systems and their decision-making and outlines the law of contract and negligence which are essential building blocks of all areas of law.

**Year 2 and 3:** You have flexibility in your choice of business-related law subjects, and can select from a wide range of electives to meet personal interests and tie in with your other principal subject.

**Year 4:** You can select Business Law as part of a joint Honours degree, studying in greater detail two of the classes you have already studied as electives

**Teaching and Assessment**

Lectures, tutorials, directed reading and group projects form the basis for instructed and student-centred learning activities. Classes are supported by excellent IT and web-based resources. Assessment methods include exam, written coursework, group work, presentations and class participation.

**Careers**

Graduates who have specialised in Business Law and another discipline find openings in government services, commerce and industry, banking and insurance, management and administration, university teaching and overseas appointments. Some graduates continue to an accelerated LLB degree (see pg 76).

**Subject Combinations**

Business Law can be studied to joint Honours in combination with the subjects listed left. To apply for any of these combinations, you should use the code specified.



**BA (Honours)****Business Technology****UCAS G290**

Highers 1st sitting

**AAAB or AABBB**

Highers 2nd sitting

**AAAABB or AAABBBB**A Levels **AAB****Joint Honours****Accounting****UCAS NG42****Business Enterprise****UCAS NG12****Economics****UCAS GL21****Finance****UCAS GN23****Human Resource Management****UCAS GN26****Management****UCAS GN22****Management Science****UCAS G291****Marketing****UCAS GN25**

For full entry requirements,  
please see table on page 120.

**Contacts**

Business School Admissions

**t:** +44 (0)141 548 4114**e:** sbs-adviser@strath.ac.uk

Course-specific enquiries

**t:** +44 (0)141 548 3613**e:** contact-bustech@strath.ac.uk

# Business Technology

[www.strath.ac.uk/business](http://www.strath.ac.uk/business)

Technology is at the heart of all modern business. Just about every organisation uses it to become more effective and to develop new services and products to expand overseas into new markets. Business executives can use technology to collaborate globally without ever having to meet in person.

**O**rganisations need to know how technology affects what they do in order to benefit from the opportunities it presents but many lack the necessary skills to understand technological change. Organisations need business graduates who are able to bridge this gap with expertise in business technology. The course combines an awareness of business technologies with an understanding of business processes. You will develop an understanding of how technology can be used and the problems that may arise. You will learn how to identify opportunities for organisational transformation.

**Course Description**

**Year 1:** Introduces key managerial and operational issues and highlights the practical problems and opportunities of technology use in business.

**Years 2 & 3:** Core classes provide you with an understanding of the management challenges caused by technological innovation. Elective classes show how technology affects all parts of the organisation, allows new ways of working to emerge and how it contributes to organisational competitiveness. Your practical skills develop through the use of enterprise resource planning software such as SAP, as well as database and simulation packages to tackle problems that are often set by external clients.

**Year 4:** You will conduct a major project, usually for a client organisation and take classes in subjects such as Business Analytics using Data Mining, Business Process Integration with ERP, Electronic Commerce, Risk Analysis and Management, Project Management. Subjects are revised to reflect topical developments in the use of technology by business as well as the research interests of staff.

**Teaching and Assessment**

Business Technology is taught through interactive lectures, tutorials and practical sessions. Guest lecturers contribute the perspective of industry, complementing that of academic staff. Electronic resources support teaching and learning, allowing teaching material to be delivered through blogs, bulletin boards and podcasts.

A range of assessment methods is used including an element of individual assessment for all classes. In some cases assessment may be in the form of group work.

**Careers**

The career prospects for Business Technology graduates are excellent and you will find business analysts in organisations as diverse as Procter & Gamble, The Royal Bank of Scotland and Tesco. The combination of business and practical software use and modelling skills is also highly attractive to consultancy companies.

**Subject Combinations**

Business Technology can be studied to single Honours, or joint Honours in combination with the subjects listed left. To apply for any of these combinations, you should use the code specified. If you wish to study Business Technology but are unsure about other subjects, you should apply under Business Technology (**UCAS: G290**).

Business Technology can also be studied in the following SBS programmes:

- BA (Honours) International Business (**UCAS: N120**)
- Masters in International Business & Modern Languages (**UCAS: NR19**)

**BA (Honours)****Economics****UCAS L100**

Highers 1st sitting

**AAAB or AABBB**

Highers 2nd sitting

**AAAABB or AAABBBB**A Levels **AAB****Joint Honours****Accounting****UCAS NL41****Business Enterprise****UCAS NL11****Business Law****UCAS LM12****Business Technology****UCAS GL21****Finance****UCAS LN13****Hospitality & Tourism Management****UCAS LN18****Human Resource Management****UCAS LN16****Management****UCAS LN12****Management Science****UCAS LG12****Marketing****UCAS LN15****Maths & Statistics****UCAS LG1C****Psychology****UCAS LC18**

For full entry requirements,  
please see table on page 120.

**Contacts**

Business School Admissions

**t:** +44 (0)141 548 4114**e:** sbs-adviser@strath.ac.uk

Course-specific enquiries

**t:** +44 (0)141 548 3840**e:** economics@strath.ac.uk

# Economics

[www.strath.ac.uk/business](http://www.strath.ac.uk/business)

Economics aims to understand the activities of the different types of agents in the economy – consumers, producers and the government – and how their activities all fit together. In the face of the recent global economic crisis, economics is more relevant and exciting than ever.

**D**ecisions on money, banking, interest rates, taxation and government spending affect us all, with global consequences.

At the level of the individual consumer and producer, economics also helps us to understand what is meant by 'rational' economic behaviour. Economics is a major subject in the Strathclyde Business School and is also offered in the BA (Honours) in Arts & Social Sciences and the BSc (Honours) in Maths & Statistics with Economics.

**Course Description**

**Year 1:** The class Introduction to Economics assumes no previous knowledge of economics but is also suitable for those who have studied the subject before. Economics in first year is concerned with consumers and industries, with markets, market failure and the role of government, unemployment and inflation.

**Year 2:** You take core classes in Microeconomics and Macroeconomics and choose from a number of optional classes.

**Year 3:** You study a combination of core and optional classes to develop the foundations laid in Years 1 and 2 with a view to Honours study.

**Year 4:** A selection of optional classes complements the core macroeconomics and microeconomics offerings. You also undertake a dissertation, which presents a first opportunity to produce a substantial piece of independent research. Optional classes in the Honours year will include:

- Applied Econometrics
- Industrial Economics
- Natural Resource, Environmental and Energy Economics

- Behavioural Economics
- Finance and Prosperity

**Teaching and Assessment**

Tutorials, workshops and lab sessions are integral to the programme. Assessment methods include essay writing and group project work, short answer class tests, multiple choice tests and formal end-of-year examinations. Good performance in coursework in Year 1 leads to exemption from the final exam.

**Careers**

Strathclyde Economics graduates are successful in obtaining employment in a wide range of areas, including: the Government Economic Service, management, investment analysis, business systems analysis, stockbroking, auditing, production control, banking, health boards, the Tax Inspectorate, the BBC and other media outlets, research, higher and further education. Prospective employers are found in the public and private sectors, manufacturing and service industries, among UK companies and foreign-owned multinationals.

**Subject Combinations**

Economics can be studied to single Honours, or joint Honours in combination with the subjects listed left. To apply for any of these combinations, you should use the code specified. If you wish to study Economics but are unsure about other subjects, you should apply under Economics (**UCAS: L100**).

Economics can also be studied in the following Business School programmes:

- BA (Honours) International Business (**UCAS: N120**)
- Masters in International Business & Modern Languages (**UCAS: NR19**)



## Student profile

### Leigh Rafferty

BA (Honours) Economics

I chose Strathclyde because of the reputation of the Business School and the flexibility of course choices; I applied to study Accounting but ended up doing Economics and Business Technology! A highlight was competing in the IBM university business challenge. I also attended annual lectures at RBS headquarters. In the summer between my third and fourth year I had an internship in London with the Government Economics Service, the biggest employer of economists in the UK. Strathclyde boasts a very flexible learning environment and I found the staff to be very approachable, friendly and helpful.



**BA (Honours)****Finance****UCAS N300**

Highers 1st sitting

**AAAB or AABBB**

Highers 2nd sitting

**AAAABB or AAABBBB**A Levels **AAB****Joint Honours****Accounting****UCAS NN43****Business Enterprise****UCAS NN13****Business Law****UCAS NM32****Business Technology****UCAS GN23****Economics****UCAS LN13****Hospitality & Tourism Management****UCAS NN38****Human Resource Management****UCAS NN36****Management****UCAS NN32****Management Science****UCAS NG32****Marketing****UCAS NN35****Maths & Statistics****UCAS NG33**

For full entry requirements,  
please see table on page 120.

**Contacts**

Business School Admissions

**t:** +44 (0)141 548 4114**e:** sbs-adviser@strath.ac.uk

Course-specific enquiries

**t:** +44 (0)141 548 3261**e:** accfin@strath.ac.uk

# Finance

A degree in Finance will give you the skills needed to pursue a career in financial services such as banking, investment management, pension fund management, and insurance, as well as a wide range of business organisations. It will also be invaluable in helping you make personal financial decisions.



ur Finance programme is unique in Scotland in terms of the range and depth of the finance issues covered. Years 1 to 3 involve detailed coverage of:

- the principles of investment and value
- business finance and decision-making
- analysis of securities such as bonds and shares
- analysis of financial derivatives such as options, futures and swaps
- management of risk
- financial modelling
- the operations of financial markets and the banking system
- interpretation of financial statements and evaluating the performance of companies

In the Honours (fourth) year you choose from a number of classes focusing on key areas of finance such as corporate investment, corporate finance, and the pricing and management of financial assets.

You can study Finance in combination with a range of business subjects. Employers tell us that they particularly value the range of subject combinations available at Strathclyde, ensuring that our students have in-depth understanding of a second subject to complement their Finance studies.

**Course Description**

**Year 1:** The class Introduction to Finance and Accounting covers the basic principles of investment and value; an introduction to the valuation of bonds and shares; an introduction to investment decisions in business companies; and an introduction to accounting methods.

**Year 2:** Classes cover domestic and international financial decision-making and policies in business; risk and return and the pricing of company shares; portfolio selection and the efficiency of financial markets. Statistical and spreadsheet methods of analysing financial problems will be included in the core classes. Optional classes will enable you to further develop your understanding of financial statements and how they may be interpreted, or to deepen your knowledge of financial markets and the banking system.

**Year 3:** Classes cover valuation of bonds and shares; valuation of derivatives such as options and futures and swaps; the operations of derivatives markets; investment strategies; treasury and international financial risk management in business. Advanced methods of empirical analysis, and access to historic and live data will be included in the core classes. Choice of optional classes covering financial statements or financial markets and the banking system as in Year 2.

**Year 4:** You can either specialise in Finance as a single Honours subject or continue to a joint Honours degree in Finance and your other principal subject. In order to gain entry to the Honours year you must meet specified performance criteria in Years 2 and 3.

Students taking single Honours in Finance will do a research dissertation in Finance, while joint Honours students typically have the choice of doing their dissertation in either Finance or their other principal subject. Honours classes cover advanced topics in the following areas:



- Corporate Investment
- Corporate Financing
- Asset Pricing
- Portfolio Analysis
- Derivatives
- International Financial Management
- Behavioural Finance
- International Corporate Governance
- Financial Quantitative Methods

### Teaching and Assessment

The majority of classes in Years 1 to 3 are taught using a mixture of lectures and tutorials. Assessment for these classes contains both coursework and final exam. Honours-year classes rely heavily on research findings in academic journals and use a wide range of assessment methods including case studies, research projects, article reviews, essays, and final exams. Exams in the Honours Finance year count for a

smaller proportion of the overall assessment than in Years 1 to 3. Final-year students are exposed to research that is at the cutting edge in finance.

### Careers

In recent years, nearly all Finance graduates entered relevant professional employment. Blackrock, Bank of America, Merrill Lynch, Deutsche Bank, The Royal Bank of Scotland, Deloitte, Ernst & Young, BAE Systems, HSBC, KPMG, Accenture, TOTAL, Aviva, PricewaterhouseCoopers, The National Australia Group and Morgan Stanley are just a few of the well known organisations who seek our graduates.

Graduates with a degree that includes Finance are well-equipped for careers as financial analysts or investment managers with a range of city institutions, including merchant banks, pension funds, insurance companies and stockbrokers. A number of our graduates

also pursue careers with the major accountancy firms and embark on the professional accounting qualifications.

### Subject Combinations

Finance can be studied to single Honours, or joint Honours in combination with the subjects listed left. To apply for any of these combinations, you should use the code specified. If you wish to study Finance but are unsure about other subjects, you should apply under Finance (**UCAS: N300**).

Finance can also be studied in the following Business School programmes:

- BA (Honours) International Business (**UCAS: N120**)
- Masters in International Business & Modern Languages (**UCAS: NR19**)



**BA (Honours)****Hospitality & Tourism Management****UCAS N890**

Highers 1st sitting

**AAAB or AABBB**

Highers 2nd sitting

**AAAAAB or AAABBBB**A Levels **AAB****Joint Honours****Accounting****UCAS NN48****Business Enterprise****UCAS NN1V****Business Law****UCAS MN28****Economics****UCAS LN18****Finance****UCAS NN38****Human Resource Management****UCAS NN6V****Management****UCAS NN2W****Management Science****UCAS NN8F****Marketing****UCAS NN5V**

For full entry requirements,  
please see table on page 120.

**Contacts**

Business School Admissions

**t:** +44 (0)141 548 4114**e:** sbs-adviser@strath.ac.uk

Course-specific enquiries

**t:** +44 (0)141 553 6101**e:** contact-management@strath.ac.uk

# Hospitality & Tourism Management

Studying Hospitality & Tourism Management opens the doors to the largest and fastest-growing sector of the Scottish and global economies and prepares you for leadership roles in a dynamic and fast growing industry which generates over £5 billion to the Scottish economy and creates 1 in 10 jobs.

**H**ospitality & Tourism is a sector that is at the heart of many of the big moments in modern life such as major sports and music events, a fun week in Ibiza or a dream holiday in the Maldives.

We will ensure that you have the necessary skills to manage operations and businesses across a diverse range of contexts including hospitality, tourism, cultural heritage, festivals and events. The skills cultivated working in hospitality and tourism environments are also covered by a broad range of businesses in the contemporary service-led economy.

On graduation you may be entitled to apply for membership of professional bodies working in the sector such as the Institute of Hospitality, the Institute of Travel & Tourism, Tourism Society or the Royal Geographical Society.

**Course Description**

**Year 1:** The introductory class presents the basic concepts, issues and operational features of hospitality, tourism, cultural heritage, festivals and events.

**Year 2:** Classes include Service Encounter Management and Destination Positioning & Management.

**Year 3:** You will have the chance to apply theoretical knowledge to real industry contexts, including exploring destination development in Scotland and Europe, and planning and executing a corporate, sports, entertainment, or charitable event. You will also be able to apply your academic knowledge to industry by undertaking a placement in one of Scotland's many exciting and innovative businesses.

**Year 4:** The core class for your Honours year is Critical Hospitality & Tourism Studies. You can also choose from Management, Enterprise and the Rise of the Global Economy, Strategy & Leadership, Being and Ethical Manager and Family Business: Theory & Practice. In addition you undertake a dissertation on a hospitality and tourism topic of your choice.

**Teaching and Assessment**

Classes use a mixture of coursework (essays and projects) and exams to assess student learning. You will be required to work on your own, but also as part of a team doing group presentations and reports or projects.

**Industry Experience**

Hospitality & Tourism management is a dynamic and customer-focused industry and we encourage you to gain a sense of the industry, its operations and organisation before starting the course, or by working during the summer break. With a truly global alumni network we can assist students in gaining experience, strengthening their CV, and developing their own professional development plan.

**Careers**

The quality of the educational experience and the reputation and international profile of our degree is demonstrated through a strong alumni presence in the sector across the globe.

Alumni job titles have included: Global CEO with Jones Lang and Lasalle Hotels, Chief Executive Glasgow City Marketing Bureau, Vice-President Operations with Intercontinental Hotels, General Manager with the Mandarin Oriental Hotel Group, Front Office Manager and



General Manager with Hilton, Director of Sales and Marketing with Radisson, Private Dining and Events Coordinator with The Ritz London, Restaurant Manager with Four Seasons, Sales Manager with the Edinburgh International Conference Centre, Human Resource Manager with Marriott, Rooms Division Manager with Ritz-Carlton, a variety of other positions from Tourist Information Centre Managers to Regional Directors for VisitScotland.com, and tourism and leisure researchers and consultants.

#### **Subject Combinations**

Hospitality & Tourism Management can be studied to single Honours, or joint Honours in combination with the subjects listed left. To apply for any of these combinations, you should use the code specified. If you wish to study Hospitality & Tourism Management but are unsure about other subjects, you should apply under Hospitality & Tourism (**UCAS: N890**).

Hospitality & Tourism Management can also be studied in the following the Business School programmes:

- BA (Honours) International Business (**UCAS: N120**)
- Masters in International Business & Modern Languages (**UCAS: NR19**)

**BA (Honours)****Human Resource Management****UCAS N600**

Highers 1st sitting

**AAAB or AABBB**

Highers 2nd sitting

**AAAAAB or AAABBBB**A Levels **AAB****Joint Honours****Accounting****UCAS NN46****Business Enterprise****UCAS NN16****Business Law****UCAS NM62****Business Technology****UCAS GN26****Economics****UCAS LN16****Finance****UCAS NN36****Hospitality & Tourism Management****UCAS NN6V****Management****UCAS NN62****Management Science****UCAS NG62****Marketing****UCAS NN65****Psychology****UCAS NC68**

For full entry requirements,  
please see table on page 120.

**Contacts**

Business School Admissions

**t:** +44 (0)141 548 4114**e:** sbs-adviser@strath.ac.uk

Course-specific enquiries

**t:** +44 (0)141 548 3974**e:** hrm@strath.ac.uk

# Human Resource Management

Human Resource Management (HRM) is the study of the ideas and practices of managing people in the workplace. It is an area of study and management which is seen as critical to good business and workplace performance.

**H**uman Resource Management is concerned with acquisition and utilisation of the 'human resource' or people as employees and the nature of the employment relationship. This covers key processes such as: recruitment and selection; training and developing; rewarding and managing performance; and influencing employee behaviour, including securing cooperation and commitment, but also recognising and managing conflict at work. These are an integral part of the strategic and management concerns in work organisations of all kinds.

Whether the context is a multinational global enterprise or an NHS trust, a small business enterprise or voluntary sector organisation, how the employment relationship is managed matters. HRM is evolving in an environment of great political, economic, social and technological change. The study of HRM involves diverse academic disciplines, combining social science explanations of individual, interpersonal and group behavior within an organisational structure, which is also located in wider structures of economic and social relationships.

Strathclyde is widely acknowledged to offer some of the best teaching in HRM in both Scotland and the UK. The Department is an accredited centre for teaching HRM, which means our postgraduate courses give students graduate membership of the leading professional body for HR managers – the Chartered Institute of Personnel and Development (CIPD).

**Course Description**

**Year 1:** The introductory class in HRM (Managing People) provides an integrated overview of the subject. It is equally appropriate for students in the Business School and in the Faculty of Humanities & Social Sciences who are interested in this

area of management, and those who wish to specialise in the subject beyond first year.

**Years 2 & 3:** Further core classes at each year cover in more depth theories and techniques about HRM processes and wider social and economic influences on the employment relationship. Year 2 year focuses on areas of workplace behaviour drawing on ideas from organisational psychology to analyse processes such as such as recruitment and selection, teams and groups, and employee commitment and engagement. Year 3 core classes draw more on sociological theories and perspectives on the nature of the employment relationship and behavior at work, which explore themes such as power and authority, interests and conflict. Options are also available in areas which reflect staff's academic expertise, for example in employee development and in equality and diversity.

**Year 4:** A range of specialist classes is available for study at single or joint Honours.

**Teaching and Assessment**

Modules are generally organised around two hours of lectures per week supported by tutorial seminars every two weeks in terms of specified contact time. However, increasing emphasis is placed on independent learning and activities outside the formal classroom context.

Assessment includes a range of assignment tasks including formal exams; extended essays; class presentations; and online quizzes. Some of these tasks may be group-based as well as individual activities.

**Careers**

Our graduates are among the most successful in both the private and public sectors. Some follow careers in the specialist area of HRM; others go on to find general graduate-entry management posts where people management knowledge and skills are increasingly important.





Recent graduates have gained jobs in a range of leading private and public sector organisations, including ScottishPower, Accenture, Marks & Spencer, health trusts and local authorities, and also research posts in the University itself.

#### **Subject Combinations**

Human Resource Management can be studied to single Honours, or joint Honours in combination with the subjects listed left. To apply for any of these combinations, you should use the code specified. If you wish

to study Human Resource Management but are unsure about other subjects, you should apply under Human Resource Management (**UCAS: N600**).

Human Resource Management can also be studied in the following Business School programmes:

- BA (Honours) International Business (**UCAS: N120**)
- Masters in International Business & Modern Languages (**UCAS: NR19**)

**BA (Honours)****Management****UCAS N200**

Highers 1st sitting

**AAAB or AABBB**

Highers 2nd sitting

**AAAABB or AAABBBB**A Levels **AAB****Joint Honours****Accounting****UCAS NN42****Business Enterprise****UCAS NN12****Business Technology****UCAS GN22****Economics****UCAS LN12****Finance****UCAS NN32****Hospitality & Tourism Management****UCAS NN2W****Human Resource Management****UCAS NN62****Management Science****UCAS NG22****Marketing****UCAS NN25**

For full entry requirements,  
please see table on page 120.

**Contacts**

Business School Admissions

t: +44 (0)141 548 4114

e: sbs-adviser@strath.ac.uk

Course-specific enquiries

t: +44 (0)141 553 6026

e: contact-management@  
strath.ac.uk

# Management

Studying Management will help you understand the theory underpinning this subject area and will help you to develop the skills required to translate the theory into practice in order to achieve personal success and make a significant contribution to society.



Management is sometimes defined as the achievement of results with, and through, others. Organisations in the public, private, charitable and voluntary sectors are all managed and the goods and services they provide are used by all of us in our daily lives. Whether the challenge is developing profitable new products or improving the health of our nation, the answer often comes down to management.

**Course Description****Year 1: Management in a Global Context**

introduces the concept of management processes and practices in a global context.

**Year 2: Organisational Analysis & Strategy**

equips you with the knowledge to use strategic concepts to analyse organisational structure and **Understanding Change In Organisations** explores the implications for change in a world that is increasingly internationally connected.

**Year 3: Developing Theory into Practice**

uses academic theory and literature, combined with real-life industry practice to develop your abilities of critical self-reflection as a future practising manager. As part of the experiential third year you will have the opportunity to study management technologies and innovation in private public and third sector organisations. You will also plan and execute a corporate, sports, entertainment, or charitable event as part of an Events Management class. In addition you will be able to apply your academic knowledge to industry by undertaking a placement in one of Scotland's many exciting and innovative businesses.

**Year 4 (Honours):** The core class Contemporary Issues in Management looks at the challenges managers face in today's ever-changing environment. You can also choose from:

- Dynamics of Organising
- Strategy and Leadership
- Management, Enterprise and the Rise of the Global Economy
- Being an Ethical Manager

In addition you undertake a dissertation on a Management topic of your choice.

**Teaching and Assessment**

Classes are taught by a mix of lectures consolidated by tutorial sessions. Our problem-centred approach uses real organisations to illustrate how theory translates to practice. We also use web-based learning environments with support materials available online.

**Careers**

The breadth of opportunities that you will be qualified for is a real benefit of this course and you will be able to make a positive contribution in a range of settings. You are as likely to find yourself working in a small, privately-owned company as you are to work in a large multinational, the public sector or perhaps even in your own business. For example, recent graduates are now working for Ernst & Young, The Royal Bank of Scotland, Lloyds, Hewlett Packard and Procter & Gamble.

**Subject Combinations**

Management can be studied to single Honours, or joint Honours in combination with the subjects listed left. To apply for any of these combinations, you should use the code specified. If you wish to study Management but are unsure about other subjects, you should apply under Management (**UCAS: N200**).

Management can also be studied in the following Business School programme:

- BA International Business (**UCAS: N120**)
- Masters in International Business & Modern Languages (**UCAS: NR190**)



**BA (Honours)****Management Science****UCAS G200**

Highers 1st sitting

**AAAB or AABBB**

Highers 2nd sitting

**AAAAAB or AAABBBB**A Levels **AAB****Joint Honours****Accounting****UCAS GN24****Business Enterprise****UCAS NN1G****Business Law****UCAS GM22****Business Technology****UCAS G291****Economics****UCAS LG12****Finance****UCAS NG32****Hospitality & Tourism Management****UCAS NN8F****Human Resource Management****UCAS NG62****Management****UCAS NG22****Marketing****UCAS NG52****Maths & Statistics****UCAS G000**

For full entry requirements,  
please see table on page 120.

**Contacts**

Business School Admissions

t: +44 (0)141 548 4114

e: sbs-adviser@strath.ac.uk

Course-specific enquiries

t: +44 (0)141 548 3613

e: contact-mansci@strath.ac.uk

# Management Science

The Department of Management Science is one of the leading departments of its kind, both in the UK and in Europe. A Management Science degree at Strathclyde constitutes the first step towards full professional accreditation with the Operational Research Society of the UK.



Management Science (also known as Operational Research) applies advanced analytical methods to business problems to help managers make better decisions.

Management scientists advise many different organisations and should not only have an excellent general awareness of how businesses work, but should also be able to apply advanced analytical methods to deal with specific management issues.

**Course Description**

**Year 1:** Management Science principles and techniques are introduced. A wide range of modelling techniques will be discussed.

**Years 2 and 3:** Core Management Science classes demonstrate the use of analytical models and problem structuring methods in a variety of real business contexts. The practice of management consultancy is explicitly addressed and individual and teamwork allow you to develop practical skills in all aspects of practice. Elective classes develop specific modelling techniques and provide the basics of Operations Management and Supply Chain Management as well as delivering detailed knowledge related to supporting knowledge workers and managers using information systems.

**Year 4 (Honours):** You carry out a major consultancy project, which focuses on the needs of a specific client organisation. You also take classes covering subjects such as Performance Measurement, Risk Management, Modelling Service Operations, Operations Strategy, Systems Dynamics and Electronic Commerce. The core Management

Science class is devoted to practical skills and knowledge in management science consultancy.

**Teaching and Assessment**

Teaching focuses on practical as well as theoretical skills. Coursework plays an important role and is reinforced through tutorials, workshops, interactive class discussions, computer-based lab sessions and independent study.

In assignments you will address real business issues and come up with genuine and realistic solutions. To reflect the team-based nature of modern management consultancy, some assignments will be in the form of group work.

**Careers**

The best performing companies look for very high levels of problem-solving ability, numeracy, business awareness and teamwork in their new employees. Management Science delivers this to a much greater extent than many other courses in business and management. For this reason, a significant number of well-known companies specifically target graduates from Strathclyde Business School in general, and Management Science in particular.

Companies employing our graduates include consultancy companies such as Accenture Consulting, PA Consulting and Capgemini; financial services providers such as The Royal Bank of Scotland, Standard Life and Goldman Sachs; consumer goods companies such as Procter & Gamble and Unilever; supermarkets such as Tesco and Morrisons; other companies such as British Airways, ScottishPower, BT, BAE Systems and public sector organisations such as the NHS. Job titles vary and may include Business Consultant, Business Analyst, Operations Manager and Risk Manager.



Magdalena Gajdosz is studying for a PhD in Management Science. Her doctoral work on safety explores risk in factors such as an organisation's structure and culture.

### Subject Combinations

Management Science can be studied to Honours or joint Honours in combination with the subjects listed left. To apply for any of these combinations, you should use the code specified. If you wish to study Management Science but are unsure about other subjects, you should apply under Management Science (**UCAS: G200**).

Management Science can also be studied in the following SBS programmes:

- BA (Honours) International Business (**UCAS: N120**)
- Masters in International Business & Modern Languages (**UCAS: NR19**)

**BA (Honours)****Marketing****UCAS N500**

Highers 1st sitting

**AAAB or AABBB**

Highers 2nd sitting

**AAAABB or AAABBBB**A Levels **AAB****Accounting****UCAS NN45****Business Enterprise****UCAS NN15****Business Law****UCAS NM52****Business Technology****UCAS GN25****Economics****UCAS LN15****Finance****UCAS NN35****Hospitality & Tourism Management****UCAS NN5V****Human Resource Management****UCAS NN65****Management****UCAS NN25****Management Science****UCAS NG52****Psychology****UCAS NC58**

For full entry requirements,  
please see table on page 120.

**Contacts**

Business School Admissions

**t:** +44 (0)141 548 4114**e:** sbs-adviser@strath.ac.uk

Course-specific enquiries

**t:** +44 (0)141 548 3736**e:** contact-marketing@  
strath.ac.uk

# Marketing

The Department of Marketing at Strathclyde is highly regarded by employers and is widely recognised as the leading centre of marketing education and research in the UK. The Department also has the recognition of professional bodies such as the Chartered Institute of Marketing.



Marketing is an exciting, constantly evolving discipline, relevant to the workplace and society. Its scope is wide-ranging and will equip you for a variety of marketing and management careers in commercial and non-commercial organisations, both large and small.

In dynamic, competitive markets which are often uncertain and hard to predict, it is essential that organisations both attract and retain customers if they are to remain competitive and achieve their objectives. Marketing recognises the importance of understanding customer requirements, providing added-value products and services, communicating their availability and creating customer satisfaction.

**Course Description**

**Year 1:** Introduction to Marketing provides an introduction to the broad principles of marketing and considers what is involved in the management of marketing within an organisation.

**Year 2:** Consumer Behaviour develops a theoretical understanding of the factors that influence buyers and Marketing Research explores the ways in which information about customers and competitors can be analysed and used when taking marketing decisions.

**Year 3:** Marketing Communications examines the theories and techniques underpinning how marketers connect and communicate with customers and other stakeholders. Strategic Marketing explores the role of marketing in formulating, planning, implementing and evaluating marketing strategies, objectives and tactics. Choice of options in Years 2 & 3 includes: Essentials of International Marketing, Retail Management, Marketing of Services and E-marketing.

**Year 4:** Brand Management demonstrates the value of brands to firms and consumers. Options in Year 4 include: International Business Management, Advances in Marketing Communications, Managing Customer Relationships, Advances in Consumer Behaviour, Sports Marketing, Marketing Channels.

**Teaching and Assessment**

Interactive teaching with small, focused tutorials supplements formal lectures. A web-based virtual learning environment supports teaching.

A range of innovative group projects and individual assignments involve case studies, group presentations, market research projects, debates, design of communication activities and development of strategic marketing plans. In your Honours year you undertake a dissertation.

**Careers**

Our graduates are valued by employers in a number of diverse areas, both in the UK and overseas and many are now in high-earning senior posts. Household names, including Shell, Procter & Gamble, Tennents and Sainsbury's, target Strathclyde as one of only a small number of UK universities which they approach for graduate recruitment.

Potential employers include not just the commercial sector and large companies, but also the sports and leisure, arts and charities/not-for-profit sectors.

Examples of employers include: L'Oréal, GlaxoSmithKline, Scottish Media Group, Faulds Advertising, ScottishPower, Caledonian Breweries, Reebok UK Ltd, Accenture, The Royal Bank of Scotland, Scottish Enterprise, Highland Spring and Compaq.



**Subject Combinations**

Marketing can be studied to single Honours, or joint Honours in combination with the subjects listed left. To apply for any of these combinations, you should use the code specified. If you wish to study Marketing but are unsure about other subjects, you should apply under Marketing (**UCAS: N500**).

Marketing can also be studied in the following Business School programmes:

- BA (Honours) International Business (**UCAS: N120**)
- Masters in International Business & Modern Languages (**UCAS: NR19**)

**BA (Honours)****International Business****UCAS N120**

Highers 1st sitting

**AAAA or AAABB**

Highers 2nd sitting

**AAAAAB or AAAABBB**A Levels **AAA****BA (Honours)****International Business including Accounting****UCAS NN14**

Highers 1st sitting

**AAAA or AAABB**

Highers 2nd sitting

**AAAAAB or AAAABBB**A Levels **AAA**

For full entry requirements,  
please see table on page 120.

**Contact**

Business School Admissions

t: +44 (0)141 548 4114

e: sbs-adviser@strath.ac.uk

# International Business

Successful organisations throughout the world recognise the importance of operating in a global market and economy, while adapting to the local, cultural requirements. Graduates with the knowledge of international business and the experience of having studied abroad are in demand.

**T**he International Business (IB) degree programme will develop your understanding of international business and the different approaches and challenges involved in operating across borders.

- a Management Development Programme designed to enhance your business skills and competencies, including an experiential project in your third year
- an excellent degree which will prepare you for the world of international business

**Specialisms**

On the International Business degree, you can choose from the following business subjects:

- Accounting\*
- Business Enterprise
- Business Technology
- Economics
- Finance
- Hospitality & Tourism Management
- Human Resource Management
- Management
- Management Science
- Marketing

\* Study of Accounting on the BA in International Business may not lead to accreditation for entry to the Institute of Chartered Accountants of Scotland.

On the IB programme you receive:

- a programme dedicated to International Business, offering specialisms in your chosen business discipline
- a life-changing experience where you will study abroad for at least one semester in your third year at one of our international partner institutions; this experience will add value to your CV and enhance your understanding of international business from a different country's perspective
- a choice of specialism within the subject disciplines offered within the Strathclyde Business School

**Course Description**

**Years 1 & 2:** Over the course of the degree there is a core focus on International Business, with classes in Management & International Business (Year 1), International Business Analysis (Year 2) and Managing Across Cultures & Frontiers (Year 3). In addition to the core in International Business you can choose from a selection of disciplines across the Business School. At the end of your first year, you will choose two of your Business subjects to take into second and third year.

**Year 3:** You will normally study classes in business and international business, in English, at a partner university or business school elsewhere in Europe, South East Asia, Australasia or North America. This will be for at least one semester. Throughout the first three years of the degree you will undertake the Management Development Programme, which is designed to develop your business skills & competencies. The third year of this programme is experiential in nature, enabling you to undertake a real life business project.

**Year 4:** The Honours year International Business class is Issues & Trends in International Business and you also study a Business specialism. You will write a dissertation project report with specialist support, investigating a topic relating to the expertise you have developed over your degree.

**Teaching and Assessment**

Teaching includes lectures, seminars, tutorials and workshops. Assessment varies from class to class, but includes case study work, presentations, written and oral exams, essays, projects and the Honours research dissertation. Throughout the programme there will be guest lectures from industry and our international partners.

**Careers**

Graduates who can excel internationally in industry, finance, commerce or the public sector are in demand: international business knowledge combined with the experience of study abroad will set you apart. International Business graduates pursue careers in European sales, international banking, international publishing, business analysis, export agencies, tourism and management consultancy. Some of the firms recruiting our graduates are listed on pg 147.



**Masters in****International Business & Modern Languages****UCAS NR19**

Highers 1st sitting

**AAAA or AAABB**

Highers 2nd sitting

**AAAAAB or AAAABBB**A Levels **AAA**

For full entry requirements,  
please see table on page 120.

**Contact**

Business School Admissions

t: +44 (0)141 548 4114

e: sbs-adviser@strath.ac.uk

# International Business & Modern Languages

The globalisation of industry presents excellent career opportunities for students who can combine good language ability with a sound knowledge of international business and an understanding of different cultural approaches to business.

**I**nternational Business & Modern Languages (IBML) is a five-year Masters-level degree programme designed for those who wish to acquire a firm foundation in essential business subjects at the same time as developing the ability to conduct business in a foreign language.

On this programme, you will be able to:

- capitalise on your ability by studying languages to Masters level
- develop your understanding and knowledge of International Business to the same depth as those on the International Business degree (see preceding course entry)
- prepare for a business career with demonstrable management potential; the Management Development Programme builds essential management skills
- ensure your language fluency in a year abroad as well as gaining the confidence to do business overseas and in other cultures – a real winner for employability

**Specialisms**

On the IBML degree, you can choose from the following business subjects:

- Business Enterprise
- Business Technology
- Economics
- Finance
- Hospitality & Tourism
- Human Resource Management
- Management
- Management Science
- Marketing

On the IBML degree you can choose from a list of languages on offer. You can follow

two languages to Masters level or choose one language to Masters level and use the other language stream to study a selection of languages, e.g Mandarin, Arabic, alongside your main language. The elective language is studied for a period of one year with another elective selected in Years 2 and 3. On the IBML degree, you choose one of the following Modern Languages:

- French
- Italian
- Spanish

**Course Description**

**Years 1, 2 & 3:** Each of the first three years centres around a core of classes in International Business and the Management Development Programme. In Year 1, in addition to International Business and Management Development, you choose two main languages, or one main language with an elective language to be studied for one year. You will also take two business subjects. In Years 2 and 3, you will continue with your chosen Business Subject and two main languages, or one main language with an elective language in each year.

**Year 4:** This year is normally spent in a business school (or equivalent) in the country of your chosen language, developing confidence in the language and understanding of its culture. Alternatively, you may undertake an appropriate work placement.

**Year 5:** In your final year you study Issues and Trends in International Business and your business specialism and further develop skills in your languages. You investigate a topic within real businesses and industries and supported by a specialist supervisor, present it in a well-crafted report.



### Teaching and Assessment

Teaching on this programme is delivered in both Strathclyde Business School and the Faculty of Humanities & Social Sciences. The language teaching is a bespoke programme for students following this degree, with emphasis on language for business. Within the Business School our international partners will also contribute in the form of guest lectures and business games.

Assessment includes case study work, presentations, written and oral exams, essays, projects and the Masters research dissertation.

### Careers

There is well-established interest among employers in graduates who combine a strong business knowledge with language ability. As international trade and global commerce become ever more important, demand is increasing for graduates who can demonstrate competence in both specialist international business and language and cultural fluency.

Recent graduates have been recruited by major firms such as Accenture, BMW, Commerzbank, Dresdner Kleinwort Benson, IBM, Kleenex, Procter & Gamble, Deloitte, PricewaterhouseCoopers, The Royal Bank of Scotland and ScottishPower.



# Admissions

## ENTRY REQUIREMENTS

The most common and straightforward way for you to demonstrate your academic ability is through your results in national examinations, but we also acknowledge academic potential and motivation. We will take alternative qualifications and additional factors into account when making our decisions. Detailed entry requirements are given within each Faculty section. However, everyone is considered on an individual basis, so please do not hesitate to contact a Department to discuss your situation and find out more about your position with regard to gaining a place at Strathclyde.

## UCAS Tariff

The University does not express its offers in terms of UCAS tariff points.

## Alternative Qualifications

We accept a wide range of qualifications. The contacts named for each course welcome your enquiries about your qualifications, or the Recruitment and International Office can be a helpful starting point (t: +44 (0)141 548 2814, e: [ugenquiries@strath.ac.uk](mailto:ugenquiries@strath.ac.uk)).

## General Entrance Requirements

All applicants must demonstrate proficiency in English and Maths (or a Science). For UK students this usually means Standard Grade 3, Intermediate 2 at C, or GCSE grade C. Higher English is always desirable.

## SQA Highers

As well as meeting specific subject requirements, applicants are expected to reflect their course interests by offering Highers which demonstrate appropriate skills or knowledge. We value breadth, so every Higher offered does not need to be related to the degree course you are applying for, but our academic selectors may focus on the subjects they consider more relevant when making their offers. If in doubt please check with the admissions contact for your course.

## Two Sittings of Highers

If Scottish students do not meet the grades required in S5 we generally look for more over two sittings. We have estimated our S6 standards on our course pages, but the level of competition will vary from year to year and this will be reflected in the offer you receive from us.

If you have taken Highers in S4 please enquire through the appropriate course contact for guidance on how this might affect your offer.

## Sitting Highers at Colleges of Further Education

Applicants presenting Highers for entry should be aware that the University will only consider Highers taken over a maximum of two sittings. Applicants who have taken Highers in 5th and 6th year at school and are progressing to college before applying to the University should contact the department they wish to study in for advice about the most appropriate FE qualification for entry.

## Advanced Highers

We have a high regard for the Advanced Higher (A-C) as a preparation for university study. A relevant Advanced Higher will often overlap with first-year university work and give you a real head start, eg an Advanced Higher in a Science or in a Language you plan to study, or Advanced Higher Maths for Engineering. Students with good Advanced Higher qualifications may in exceptional cases gain second-year entry. For individual Department's approach to the acceptance of Advanced Highers see the entry requirements table within each faculty section.

## Scottish Baccalaureate

The University welcomes applications from candidates offering the Scottish Baccalaureate. The Advanced Highers will particularly benefit students going on to study related degree courses and the Interdisciplinary Project will develop useful research skills.

## A/AS Levels

The University welcomes a combination of A2 and AS Levels. Any required subject specified at Scottish Higher grade B will generally be accepted at AS Level grade B. Second-year entry may be possible with high grades in relevant A Levels.

## European, International and Other Qualifications

The University welcomes applicants with a range of equivalent qualifications to those specified, including OU credits, some professional exams and many European and international qualifications. Please seek advice from the appropriate course contacts. See pg 151 for more detailed information for international students.





[www.strath.ac.uk/admissions](http://www.strath.ac.uk/admissions)



### Summer School

Summer School offers applicants the opportunity to experience first-year University study. It may also be a condition of offer for some applicants. A variety of academic subjects will be offered – previously these have included Chemistry, Introduction to Business Management, English, Mathematics, Physics and Psychology.

The Summer School runs from June to August. Study and IT skills classes are threaded throughout the seven-week timetable. If you attend a FOCUS West school you should receive an invitation to attend.

### Contact

Lynda Scott

t: +44 (0)141 548 4314

e: [lynda.scott@strath.ac.uk](mailto:lynda.scott@strath.ac.uk)

[www.strath.ac.uk/cll/alp.access/summerschool](http://www.strath.ac.uk/cll/alp.access/summerschool)

### Top Up

If you attend a GOALS or FOCUS West school you may have the chance to take the Top Up programme in school. If you gain BBB or better on the programme we will take your Top Up grades into account along with your Highers when we make our admissions decision.

### Pre-entry Access Course

This evening course provides an entry route to the BA in Arts & Social Sciences and some courses the Strathclyde Business School and the Faculty of Humanities & Social Sciences. A Law module is available for those who wish to gain entry to the LLB.

### Subjects

English, History, Modern Languages, Politics, Psychology, Law

### Attendance

Monday evenings 6-8pm, mid-September to mid-May. Students choose three subjects and study a seven-week module in each.

### Assessment

An essay within each module, plus a written exam at the end of the academic year.

### Progression

If the Pre-entry Access course is completed successfully, the student may, dependent on the

# Admissions

level of performance, be considered for entry to:

- the full-time and part-time BA in Arts & Social Sciences
- the full-time and part-time LLB in Law
- certain courses within the School of Education
- certain courses in the Business School

Students who wish to be considered for the LLB degree course must take both the Introduction to Law and English modules. Students who do not have English as their first language must take the English module. Students should also note that entry is competitive and the UCAS personal statement may be used as a further selection criteria in addition to the Pre-Entry course result. We are unable to guarantee that attainment of the required mark will

result in the offer of a place on your chosen degree programme.

## Entry Requirements

There are no formal entry qualifications: first-come, first-served.

## Fees

£300. Students on low income or benefits can apply for a fee waiver.

## Contacts

Pre-entry Course Secretary  
Centre for Lifelong Learning  
t: +44 (0)141 548 4389  
[www.strath.ac.uk/cll/alp/access](http://www.strath.ac.uk/cll/alp/access)

Adult Information Service  
t: +44 (0)141 548 4248

## Mature Students and College Leavers

### Mature Students

The University considers anyone who has been out of school for around four years by the start of their course to be a mature student. At Strathclyde, we are keen to encourage access to higher education throughout the community and concessions are made with regard to the entry requirements for most courses if you are returning to education after substantial life and work experience (see table on pg 156). We will normally look for evidence of some recent academic study and/or grounding in any core subjects. For certain vocational courses, relevant experience is essential.

### College Leavers

For students applying from college, we welcome qualifications such as HNC/D and Highers which are considered for entry to our courses. College applicants presenting Highers for entry should be aware that the University will only consider Highers taken over a maximum of two sittings. Applicants who have taken Highers in 5th and 6th year at school and are progressing to college before applying to the University should contact the department they wish to study in for advice about the most appropriate FE qualification for entry.

The Recruitment & International Office offers advice on coming to university from college or as a mature student, including entry routes, student finance and career prospects. You can also arrange an informal interview with a Recruitment Adviser.

### Contact

Debbie Duncan  
Recruitment & International Office  
t: +44 (0)141 548 4248  
e: [d.duncan@strath.ac.uk](mailto:d.duncan@strath.ac.uk)

## APPLICATIONS

### Applying through UCAS

Applications for full-time study are processed through the Universities and Colleges Admissions Service (UCAS), which will forward your application to the University. Applications are made using the UCAS online system. There is a fee for this service. Visit the UCAS website for fee information and instructions on how to apply online ([www.ucas.com](http://www.ucas.com)).



### Timescales

**1 September 2012 - 15 January 2013:** Main application period. Please note that a final decision on your application may not be made until after 15 January 2013 to enable applications to be assessed and considered on an equal and fair basis.

**End June 2013:** Closing date for UCAS accepting applications.

### UCAS extra

Extra has been designed for applicants who have been considered by all five of their university choices, but have not been offered a place, or who have declined all offers. It allows them to make additional choices through UCAS, one at a time. Extra runs from late February to early July. Applicants are welcome to contact the University's Recruitment & Graduate Office for guidance.  
**t:** +44 (0)141 548 2814  
**e:** ugenquiries@strath.ac.uk

### Deferred Entry

If you are considering deferring entry (ie applying in January 2013 for entry in September 2014), please contact the Academic Selector in advance of submitting your UCAS application as deferred entry may not be possible for some courses.

### Protection of Vulnerable Groups

Entry to certain courses, where interaction with children or vulnerable adults is necessary, requires registration with the Protection of Vulnerable Groups Scheme. The procedure will be detailed during the application process.

### Interviews

You may be invited to an interview when you apply. For some of our vocational courses, a selection interview is an essential part of the process. This interview will assess whether your intended course and subsequent career seems a suitable choice for you and you may be competing against other candidates for a limited number of places. For other courses, the purpose is simply to give you further information about your chosen course and to allow us to take additional factors into account as well as your academic qualifications.

### TUITION FEES AND SUPPORT

(UK and EU Students)

Money is always high on the list of priorities of every student. Central to your student budget will be Tuition Fees. Below we outline some of the variables in these fees.

Student finance arrangements are affected by political devolution in the UK and are subject to change by government. The financial position of students domiciled\* in Scotland is therefore different to that of students domiciled\* in England, Wales or Northern Ireland. The information shown below is based on government policy at the time of going to print. Applicants or their families can contact the Student Financial Support Team for advice and further information

**t:** +44 (0)141 548 2753

**e:** s.finance@strath.ac.uk

For students starting a full-time first undergraduate degree in Scotland in autumn 2013, the financial arrangements are likely to be as follows:

#### Students domiciled\* in Scotland

Students in this category will normally not be required to make a personal contribution towards the cost of their annual tuition. Their tuition fees will be paid by the Scottish Government through the Student Awards Agency for Scotland (SAAS). Note: Some Scottish-domiciled students may be required to meet their own tuition fees, eg if they have received support for previous study in higher education. If in doubt, contact SAAS ([www.saas.gov.uk](http://www.saas.gov.uk)).

SAAS award bursaries of up to £2,640 a year for young Scottish-domiciled students from lower income backgrounds.

Student Loans are available on a means tested basis, with entitlement varying from around £915 per year (minimum for those living away from home) to approximately £5,417 per year (maximum for those living away from home).

There are supplementary allowances available, although please note that most of these are means-tested. They include: Dependant's Allowance, Disabled Students Allowance (which is not means-tested), Lone Parent's Grant, Lone Parent's Childcare Grant, and travelling expenses.

#### Students domiciled\* in England, Wales & Northern Ireland

For students in this category there will be a tuition fee of £9,000 per annum. Tuition fee loans are available to cover the cost of fees, repayment of which commences after graduation when earning a salary of £21,000 per annum. The cost will be capped at £27,000 for a four-year Bachelor Honours degree. Five-year Integrated Masters degrees (MEng, MSci, MChem, MMath, MPhys) will incur an additional year's payment of £9,000 for which a tuition fee loan will also be available. Exceptionally the MPharm is a four-year Masters course and students will pay £9,000 for each of the four years.

Students will be entitled to apply a living cost loan and (depending on parental income) some students may be eligible for a maintenance grant. Details can be obtained from the relevant funding authorities:

**England:** Department for Education and Skills  
[www.dfes.gov.uk/studentsupport](http://www.dfes.gov.uk/studentsupport)

**Northern Ireland:** Education & Library Boards  
[www.delni.gov.uk/studentfinance](http://www.delni.gov.uk/studentfinance)

**Wales:** Student Finance Wales  
[www.studentfinancewales.co.uk](http://www.studentfinancewales.co.uk)

\* Country of domicile is usually determined by parental address for students under 25 years of age, or the student's home address for students who are over 25 or who are wholly independent of their parents. EU (non-UK) nationals are eligible to have their fees paid by the Student Awards Agency for Scotland. Please contact the Agency for more information. International applicants can contact the Recruitment & International Office.



# Admissions

## INTERNATIONAL STUDENTS

### General Guidance

Each year, the University welcomes students from more than 100 countries who quickly become part of our vibrant, cosmopolitan community. If you are an international applicant, the following information is designed to help you with your decision-making and the application process. Students from non-European Economic Area (EEA) countries and Switzerland who normally require a visa to study in the UK need to obtain 40 points in order to be given a Tier 4 Adult (General) Student Visa. Points are gained as follows:

- A CAS number (Certificate of Acceptance for Studies) (30 points) will be issued by the University of Strathclyde when you accept our Offer of Study, meet any conditions mentioned in our Offer of Study, and pay the University's standard deposit of £2,000. This is an advance payment which will be offset against the amount of your tuition fees. If you have an official financial sponsor you will not have to pay this deposit. You should send a copy of your sponsorship letter to the University's Finance Office and your CAS number will be issued.
- You will be given the remaining 10 points when you provide evidence to the Entry Clearance Officer who is considering your visa application that you have maintenance of £600 per month for the first nine months of your study; an additional £400 per month for the same period is required for every dependant who may accompany you.

Further details and up-to-date information on visa requirements can be found on the following websites:  
[www.strath.ac.uk/rio](http://www.strath.ac.uk/rio)

UK Council for International Student Affairs  
[www.ukcisa.org.uk](http://www.ukcisa.org.uk)

### How to Apply

#### Degree-seeking students

All applications for undergraduate degrees must be made through the Universities and Colleges Admissions Service (UCAS) see pg 150.

### Non-degree seeking students

Students wishing to spend a year or semester at Strathclyde outwith an exchange agreement should apply through the Recruitment & International Office. The University admits students currently registered for a degree at their home university and full credit is normally transferred on successful completion of classes taken at Strathclyde. Exchange students should apply through their home university.

#### Contact

Recruitment & International Office  
**t:** +44 (0)141 548 2913  
**e:** [international@strath.ac.uk](mailto:international@strath.ac.uk)

### Entry Requirements

#### Degree-seeking students

Strathclyde admits students with a range of qualifications (see table on pg 159). For advice on whether your qualification is acceptable, please contact your nearest British Council office or the University's Recruitment & International Office (details above).

#### Non degree-seeking students

Strathclyde admits students currently registered for a degree at their home institution. You should be of good academic standing as set out by your home institution. When submitting the non-graduating application form (available from the Recruitment & International Office), you should include details of your academic progress to date, together with academic references.

### English Language Requirements

If English is not your first language, you must provide evidence of your proficiency before beginning your course. Strathclyde will consider a number of English language qualifications, but IELTS or TOEFL exams are the most acceptable.

**IELTS:** The overall score required is normally 6.5 or successful completion of a suitable preparatory English language course with no individual component below 5.5.

**TOEFL:** The overall score required is normally IBT 90-95 (Internet-based test) with minimum scores of 21 in Listening and Writing, 22 in Reading and 23 in Speaking.

**Note:** Certain courses have higher English Language requirements, please refer to individual course information for details.

The University's English Language Teaching Division offers both intensive and non-intensive courses throughout the year and the Pre-entry and pre-session courses run from April to September. One month of pre-session English language tuition is available free of charge to international students paying full overseas fees. For additional support during term-time, free tuition is also available for up to four hours each week for international students paying full overseas fees.

#### Contact

Language Learning Centre,  
 English Language Teaching  
**t:** +44 (0)141 548 3065  
**e:** [elt@strath.ac.uk](mailto:elt@strath.ac.uk)  
[www.strath.ac.uk/elt](http://www.strath.ac.uk/elt)

### Key contacts for International Students

British Council  
[www.educationuk.org](http://www.educationuk.org)  
 University of Strathclyde  
[www.strath.ac.uk/rio/prospective](http://www.strath.ac.uk/rio/prospective)

### Academic Departments

If you have any queries regarding your proposed course of study, please contact the member of academic staff whose name is given in each course description in this prospectus.

### Money matters for International Students

Students (degree-seeking and non-degree seeking) from non-EU countries must pay full overseas fees. For up-to-date information on tuition fees visit [www.strath.ac.uk/tuitionfees](http://www.strath.ac.uk/tuitionfees)

### EU degree-seeking students

EU students from outwith the UK who are studying a full degree programme are normally subject to the same tuition fee arrangements as Scottish domiciled students (see pg 151 for details). In order to qualify for these arrangements, you must meet all of the following conditions:

- be an EU national, or the child or stepchild of an EU national
- have been ordinarily resident in a member state of the EU or elsewhere in the EEA and Switzerland for the three years immediately before the start of the academic year
- be taking a course of full-time study in Scotland and plan to graduate in Scotland

An application should be made to the Student Awards Agency for Scotland ([www.saas.gov.uk](http://www.saas.gov.uk)) as soon as you have received an offer. Please note that students in this category are not eligible to apply for a student loan to assist with living costs.

#### **Non degree-seeking EU students receiving credits**

As a visiting student to the University of Strathclyde, you will be required to pay tuition fees for the duration of your study period at this University.

#### **Support for International Students**

International students can make use of all the University's Student Support Services. You will have an opportunity to meet representatives of all the services at orientation/information sessions organised by the Information and Advice Team at the start of each semester. Information and Advice staff can provide advice throughout your time at Strathclyde on issues such as immigration (visas), financial, academic or personal matters.  
e: [infoandadvice@strath.ac.uk](mailto:infoandadvice@strath.ac.uk)

#### **Social Life**

The Information & Advice Team also promotes social life on and off-campus and will put you in touch with the many clubs, societies and national groups in the University. There is an International Students' Club which organises weekend trips to other parts of Scotland, film and theatre nights, day tours, cultural events and a weekly midweek meeting in a range of Glasgow venues. Details of these activities will be sent to your Strathclyde email address every week.

## Visit Us

[www.strath.ac.uk/rio/visitingopportunities](http://www.strath.ac.uk/rio/visitingopportunities)

Our Open Days are held each year in September for prospective applicants.

#### **2012**

Monday 3 September 6 - 8pm)

Tuesday 4 September (9.30am - 2.30pm)

#### **2013 (provisional)**

Monday 2 September 6 - 8pm)

Tuesday 3 September (9.30am - 2.30pm)



#### **Visit Days**

If you have missed the Open Day, it is still possible to visit the University and you can find a list of dates on our website. During the visit you will have the opportunity to find out more about the University and its courses, take a campus tour and ask questions. If you would like to book a visit please sign up at [www.strath.ac.uk/rio/visitingopportunities](http://www.strath.ac.uk/rio/visitingopportunities)

#### **Applicant Visits**

These sessions provide an opportunity for applicants who hold an offer of admission to find out more about the degree for which they have applied, as well as the services available to students at the University. Applicants to the Faculty of Science and the Strathclyde Business School will be invited to attend an information session in March. Individual departments in the Faculty of Humanities & Social Sciences and the Faculty of Engineering may arrange visiting opportunities and interviews (some courses require attendance at an interview as part of the professional requirement for admission) once the application has been received.

If you have a disability and think that you will need assistance or adjustments to help you participate in any of the above applicant events, please contact the Disability Service.

e: [disabilityservice@strath.ac.uk](mailto:disabilityservice@strath.ac.uk) **Minicom:** +44 (0)141 548 4739

[www.strath.ac.uk/disabilityservice](http://www.strath.ac.uk/disabilityservice)

# Visiting

## By Air

### Glasgow Airport

(15-20 minutes drive;  
regular airport buses)  
[www.glasgowairport.com](http://www.glasgowairport.com)

### Edinburgh Airport

(45 minutes drive)  
[www.edinburghairport.com](http://www.edinburghairport.com)

### Prestwick Airport

(50 minutes drive;  
regular train service)  
[www.glasgowprestwick.com](http://www.glasgowprestwick.com)

## By Rail

High-speed Intercity rail service between London and Glasgow Central Station (five hours) and between Edinburgh and Glasgow Queen Street Station (50 minutes).

### Passenger enquiries

t: 08457 484950 (within the UK)  
t: +44 (0)20 7278 5240 (from outwith the UK)

## By Coach

Buchanan Bus Station  
t: +44 (0)141 332 9644

## By Car

**From England and the south via the M6 and M74 (A74) motorways.** Leave the M74 Jct 4 to join the M73 Jct 1. Leave the M73 Jct 2 to join the M8 Jct 8 westbound. Exit the M8 Jct 15 for the University's John Anderson Campus and Jct 25 for Jordanhill Campus.

**From Stirling and the north via the M9, M80 (A80) and M8 motorways.** Traffic from Fife should follow signs for Kincardine Bridge and then join the M876. Exit the M8 Jct 15 for the University's John Anderson Campus and Jct 25 for the Jordanhill Campus.

**From Edinburgh and the east via the M8.** East Lothian and Northumberland traffic on the A1 should take the A720 Edinburgh City By-pass to join the M8. Tyneside traffic should take the A69 Carlisle Road and join the M6 at Jct 44, the intersection with the A74 (M)

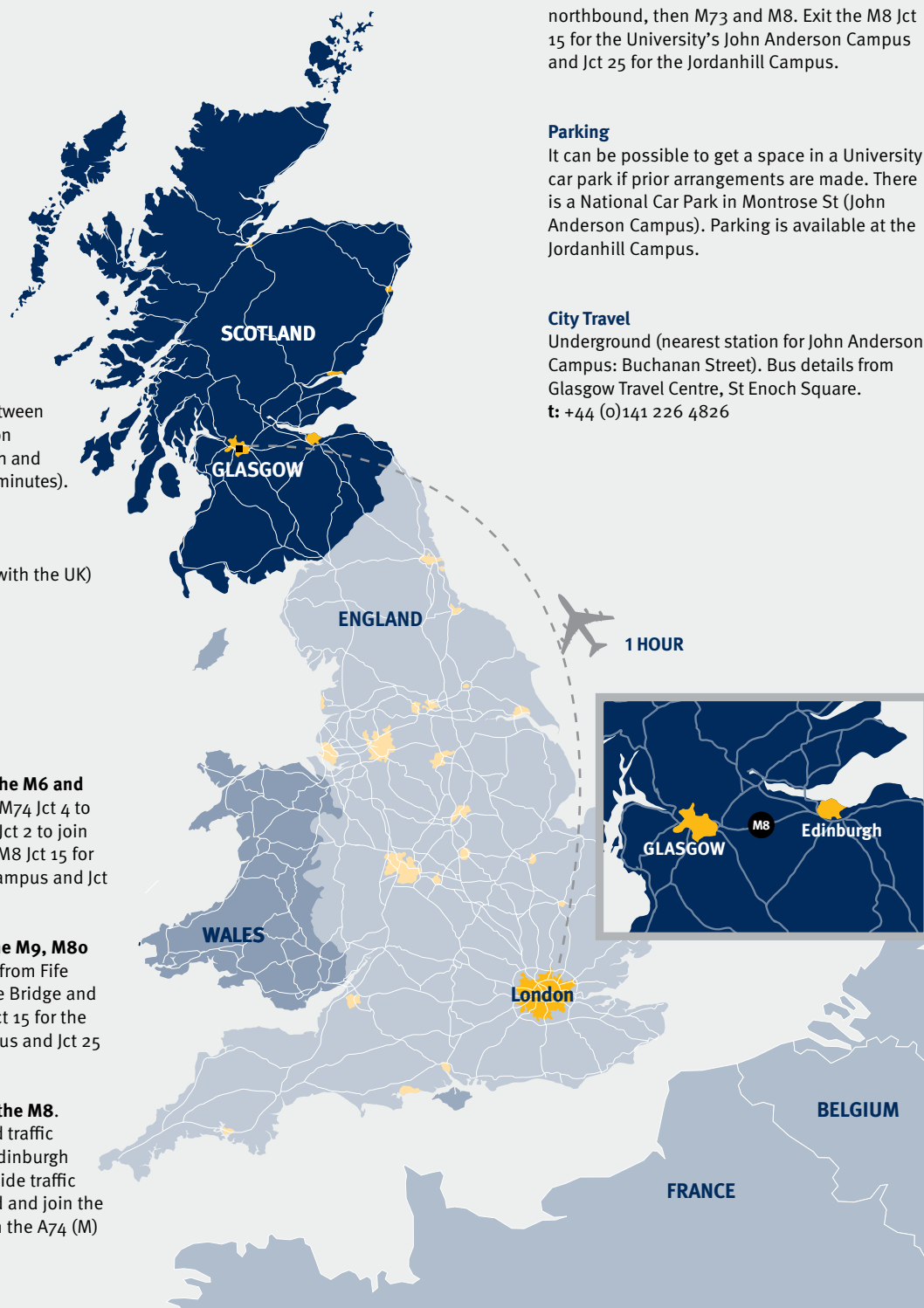
northbound, then M73 and M8. Exit the M8 Jct 15 for the University's John Anderson Campus and Jct 25 for the Jordanhill Campus.

## Parking

It can be possible to get a space in a University car park if prior arrangements are made. There is a National Car Park in Montrose St (John Anderson Campus). Parking is available at the Jordanhill Campus.

## City Travel

Underground (nearest station for John Anderson Campus: Buchanan Street). Bus details from Glasgow Travel Centre, St Enoch Square.  
t: +44 (0)141 226 4826







0.5KM APPROXIMATELY

# Mature Students

Course	Highers	A Levels	HNC/HND	Other Qualifications
<b>BA (Honours)</b> Arts & Social Sciences	<b>ABB</b> in preferred subjects (see page 84)	<b>BB</b>	<b>First Year Entry</b> HNC Social Sciences with <b>A</b> in Graded Unit  <b>Second Year Entry</b> HND Social Sciences, <b>ABB</b> in Graded Units may permit second year entry if two preferred subjects studied in depth	<b>Scottish Wider Access Programme (SWAP)</b> Access to Humanities ABB  <b>Pre-entry Access Course</b> Pass mark of 60%  <b>Open University</b> 60 points at level 1 or above in relevant subject(s)  <b>Diploma of Higher Education</b> Social Sciences (City of Glasgow College) pass in all modules at first attempt may permit entry to third year
<b>Additional Information:</b> Good reference and personal statement required				
<b>BA (Honours)</b> Journalism & Creative Writing	<b>ABB</b> (including English (all at one sitting))	<b>BB</b>	HNC Social Sciences; Communication; Journalism; Professional Writing with <b>A</b> in Graded Unit  HND (as HNC) with <b>ABB</b> in Graded Units; direct entry to second year not offered	<b>Scottish Wider Access Programme (SWAP)</b> Please seek advice from departmental contact (see page 64)  <b>Pre-entry Access Course</b> Pass mark of 60%  <b>Open University</b> 60 points in Foundation Humanities & Creating Writing level 2
<b>Additional Information:</b> Good reference and personal statement required				
<b>LLB (Honours)</b> Law	<b>BBBB</b> (Humanities subjects) at one sitting	<b>BB</b>	HND Legal Services with <b>AAB</b> in Graded Units; entry is to first year of the LLB course; entry with HNC not offered	<b>Scottish Wider Access Programme (SWAP)</b> Access to Humanities <b>AAA</b> ; contact the Law School for other accepted access courses (see pg 76)  <b>Pre-entry Access Course</b> Pass mark of 65% including Law, English and another subject  <b>Open University</b> 60 points at level 1 or above in relevant subject(s)
<b>BEd (Honours)</b> Primary Education	<b>BBBB</b>	<b>BBB</b>	<b>First Year Entry</b> HNC Early Education & Childcare or Social Sciences, <b>B</b> in the Graded Unit, plus two Highers at <b>B</b>  HND Social Sciences, <b>BBB</b> in Graded Units will be considered for entry to first Year  <b>Second Year Entry</b> HND Supporting & Managing Learning Needs (Langside College) may permit second year entry	<b>Scottish Wider Access Programme (SWAP)</b> Access to Education; Humanities; Social Sciences <b>ABB</b>  <b>Pre-entry Access Course</b> Pass mark of 60% including three Highers and relevant Maths and English requirement
<b>Additional Information:</b> The General Teaching Council (Scotland) has a mandatory requirement for passes in Higher English (or Communication 4 and Literature 1) and Standard Grade Maths (credit) or Intermediate 2 Maths; Core Maths 4 is not accepted				

Course	Highers	A Levels	HNC/HND	Other Qualifications
<b>BA (Honours)</b> Social Work	<b>BBB</b> (preferably Humanities subjects including English)	<b>BC</b>	<b>First Year Entry</b> HNC Social Care; Social Sciences; Childcare & Education; Working with Communities; Counselling; Supporting Learning Needs; <b>B</b> in Graded Unit	<b>Scottish Wider Access Programme (SWAP)</b> Access to Humanities; Social Work <b>BBB</b>  <b>Pre-entry Access Course</b> Pass mark of 60%  <b>Open University</b> Please seek advice from course contact (see pg 80)
<b>Additional Information:</b> English and Maths, minimum Standard Grade 2 or Int 2 C (or GCSE C) preferred but not essential; evidence of relevant work experience and a well-focused Personal Statement required				
<b>BSc (Honours)</b> Speech & Language Pathology	<b>ABB</b> including English at <b>B</b> and a science (over one sitting)	<b>AB</b> including English at AS Level	<b>First Year Entry</b> Relevant HND with <b>AAB</b> in Graded Units may permit entry to first year	<b>Open University</b> 60 credits at Level 1 or above in relevant subject(s); 30 credits at Level 1 where applicants have a degree but have no academic achievements within the last five years
<b>Additional Information:</b> Applicants not taught in the medium of English will require an IELTS score of 7.5 with no element below 7				
<b>BSc (Honours)</b> Sport & Physical Activity			HNC/D Sports Coaching; Sports Development; Sport Studies; Fitness, Health & Exercise with <b>BBB</b> in Graded Units; second year entry may be possible from HND	
<b>Additional Information:</b> Higher English at C or equivalent required				
<b>BA (Honours)</b> Strathclyde Business School	<b>ABB</b> including English  (For Accounting: as above including Maths at <b>B</b> ; for International Business & Modern Languages: as above including <b>B</b> in the language to be studied)	<b>AB</b>  Accounting: as above including Maths at <b>B</b> International Business & Modern Languages: as above including <b>B</b> in the language to be studied  <b>BB</b> in your proposed two Principal Subjects may allow second year entry	Passes at <b>A</b> in all graded units are required  Where possible, successful HND applicants are offered second year entry where subjects have been studied in sufficient depth; HND modules will be evaluated from information submitted on the UCAS application  Contact SBS admissions for advice (see pg 120)	<b>Scottish Wider Access Programme (SWAP)</b> Access to Humanities <b>AAB</b> . Applications are considered on an individual basis; applicants may be invited for interview  <b>Pre-entry Access Course</b> Pass mark of 60% plus (for Accounting) Higher Maths at <b>B</b> and (for International Business & Modern Languages) Higher at <b>B</b> in language to be studied  <b>Diploma of Higher Education</b> Business (City of Glasgow College) pass in all modules on first attempt may permit entry to third year  <b>Open University</b> 60 points at level 1 or above in relevant subject(s)



# Mature Students

Course	Highers	A Levels	HNC/HND	Other Qualifications
Engineering Courses	<b>AAB or ABBB</b> at one sitting in required subjects (Maths and Physics for most courses); check individual course entry requirements (pps 54 - 59) for specific requirements	<b>BBC</b> at one sitting in required subjects (Maths and Physics for most courses); check individual course entry requirements (pps 54 - 59) for specific requirements	HNC/HND see individual course entry requirements	<p><b>Scottish Wider Access Programme (SWAP)</b> Access courses in engineering and certain science subjects are considered on an individual basis; SWAP students may be required to attend Summer School</p> <p><b>Open University</b> 60 points at level 1 or above in relevant subject(s) are considered on an individual basis; OU students may be required to attend Summer School</p>
Science Courses	Minimum <b>BBB</b> gained over the last two years in required subjects; check individual course entry requirements (pps 112 - 117) for specific requirements	Minimum <b>BB</b> gained over the last two years in required subjects; check individual course entry requirements (pps 112 - 117) for specific requirements	<p><b>First Year Entry</b> HNC in an appropriate subject with <b>B</b> in Graded Unit</p> <p><b>Second Year Entry</b> HND in an appropriate subject with <b>Bs</b> in Graded Units may allow second year entry</p>	<p><b>Scottish Wider Access Programme (SWAP)</b> Access courses in science subjects are considered on an individual basis; SWAP students may be required to attend Summer School</p> <p><b>Open University</b> 60 points at level 1 or above in relevant subject(s) are considered on an individual basis; OU students may be required to attend Summer School</p>

# International Students

The table below provides general guidance on the range of qualifications and entry standards required for entry to the University of Strathclyde. Academic requirements vary from course to course and many degree programmes require specific subjects. You will need to check with Academic Selectors (see contact details at course entries) for further clarification. Please note that in some cases we will look for additional UK or international qualifications, eg A Levels or International Baccalaureate.

Country	Qualification	Grade range
Austria	Reifeprüfung / Maturazeugnis	1 - 3
Belgium	Diploma van Secundair / Certificate d'Enseignement Secondaire Supérieur / Abschlusszeugnis der Oberstufe des Sekundarunterrichts	7 - 9
Bulgaria	Diploma za Sredno Obrazovanie	4 - 6
Cyprus (Greek)	Apolytirion	15 - 19
Cyprus (Turkish)	Devlet Lise Diplomasi / Lise Bitirme Diplomasi	7-9
Czech Republic	Maturitní Zkouška	2 - 3
Denmark	Studentereksamen	8 - 11
Estonia	Gümnaasiumi lõputunnistus and Riigieksam	60 - 90%
Finland	Ylioppilastutkintotodistus/Studentexamensbetyg	4 - 6
Germany	Abitur	1 - 3
Greece	Apolytirion of Eniaio Lykeio	15 - 19
Hungary	Érettségi	4 - 5
Ireland	Irish Leaving Certificate	BBBB -AAAABB
Italy	Diploma di Esame di Stato/Maturità	65 - 95
Latvia	Atestāts par vispārejo videjo izglītību	A - C
Lithuania	Brandos Atestatus	7 - 10
Luxembourg	Diplôme de Fin d'Etudes	39 - 48
Malta	Matriculation Certificate – Advanced Level (MC)	A - C
Netherlands	Diploma Voorbereidend Wetenschappelijk Onderwijs (VWO)	6 - 9
Poland	Matura	55% - 70%
Portugal	Diploma de Ensino Secundário	14 - 18
Romania	Diploma de Bacalaureat	7 - 9
Slovakia	Maturita	1 - 3
Slovenia	Maturitetno Spricevalo	3 - 5
Spain	Titulo de Bachiller	7 - 9
Sweden	Fullständigt Slutbetyg från Gymnasieskolan	G - MVG
USA	High School Graduate Diploma Cumulativeone	GPA (3.0-4.0) plus AP (4-5) or one SAT II (600-800)
European Baccalaureate		60 - 80%
International Baccalaureate	See relevant course entry	

# The Campus



## KEY

- |  |  |  |
|--|--|--|
| 1 McCance Building                               | 11 Sir William Duncan Building               | 23 James Goold Hall  |
| 2 Livingstone Tower                              | 12 Strathclyde Business School               | 24 Murray Hall   |
| 3 Graham Hills Building                          | 13 Stenhouse Building                        | 25 Campus Village Office                                     |
| 4 Royal College Building                         | 14 Arbuthnott Building                       | 26 Garnett Hall  |
| 5 James Weir Building                            | 15 Wolfson Building                          | 27 Birkbeck Court  |
| 6 Thomas Graham Building                         | 16 Curran Building                           | 28 Barony Hall   |
| 7 Centre for Sport & Recreation                  | 17 Lord Hope Building (not in view)          | 29 Andrew Ure Hall   |
| 7a Chaplaincy / St Paul's Building (not in view) | 18 John Anderson Building                    | 30 Patrick Thomas Court                                      |
| 7b Student Union (not in view)                   | 19 Chancellors Hall                          | 31 Henry Dyer Building                                       |
| 8 Rottenrow Gardens                              | 20 James Blyth Court / Thomas Campbell Court | 32 Collins Building / Collins Gallery                        |
| 9 Colville Building                              | 21 James Young Hall                          | 33 Ramshorn Theatre  |
| 10 Architecture Building                         | 22 Forbes Hall                               | 34 Strathclyde Institute of Pharmacy and Biomedical Sciences |



# Terms & conditions

---

All students will be required as a condition to abide by and to submit to the procedures and rules of the University's Statutes, Ordinances, and Regulations as found in the University Calendar, as amended from time to time. A copy of the Calendar may be downloaded via the link at [www.strath.ac.uk/gpes/gmpt/academicquality/publications](http://www.strath.ac.uk/gpes/gmpt/academicquality/publications)

The University will use all reasonable endeavours to deliver courses in accordance with the descriptions set out in this Prospectus. Matters such as industrial action and the death or departure of staff may adversely affect the ability of the University to deliver courses in accordance with the descriptions. Also, the University has to manage its funds in a way which is efficient and cost-effective, in the context of the provision of a diverse range of courses to a large number of students.

The University therefore:

- a) reserves the right to make variations to the contents or methods of delivery of courses, to discontinue courses and to merge or combine courses, if such action is reasonably considered by the University in the context of its wider purposes. If the University discontinues any course, it will use its reasonable endeavours to provide a suitable alternative course.
- b) cannot accept responsibility, and expressly excludes liability, for damage to students' property, transfer of computer viruses to students' equipment, and changes to teaching arrangements and similar activities.

This Prospectus, published in February 2012, is for use by those interested in entering the University in the academic year beginning in September 2013. The contents of the Prospectus are as far as possible up-to-date and accurate at the date of publication. Changes are made from time to time and the University reserves the right to add, amend or withdraw courses and facilities, to restrict student numbers and to make any other alterations as it may deem necessary and desirable. The descriptions of courses in this Prospectus are intended as a useful guide to applicants and do not constitute the official regulations which are available in the current edition of the University Calendar.

A guide to the admission requirements for the University's degree courses is given in each course entry, but please consult the University website for the most up-to-date information.

The published entry requirements are the minimum required to be considered for entry. Applicants will be considered based on their potential through assessment of their personal statement, reference and academic performance. In some cases no decisions will be made until after the UCAS deadline of 15 January 2013 to enable applications to be assessed and considered on an equal and fair basis. It may be possible that you will hear before this date but in all cases, decisions will be communicated through UCAS.

With thanks to individuals and Departments throughout the University who have contributed to this prospectus.

Special thanks to Glasgow Museums and Metropolitan Bar & Restaurant for location photography permissions.

Photography by University of Strathclyde and Getty

Designed by White Light Media, ISO 9001 certified publisher

Printed by Sterling, an ISO-14001 printer, using vegetable-based inks on FSC-certified carbon-balanced recycled paper