



THE UNIVERSITY  
*of* ADELAIDE

# 2012 Study Abroad & Exchange



PRODUCED  
**105**  
RHODES  
SCHOLARS



**3<sup>RD</sup>**  
OLDEST  
UNIVERSITY  
IN AUSTRALIA

RANKED  
IN TOP  
**1%**  
OF UNIVERSITIES  
WORLDWIDE

ASSOCIATED WITH  
**5**  
NOBEL  
PRIZE  
WINNERS

**120+**  
EXCHANGE  
PARTNERS



MEMBER OF  
GROUP OF  
**8**

**150,000**  
ALUMNI LIVING  
IN 80 COUNTRIES  
WORLD WIDE

PRODUCED  
**110**  
FULBRIGHT  
SCHOLARS

**6,000**  
INTERNATIONAL  
STUDENTS

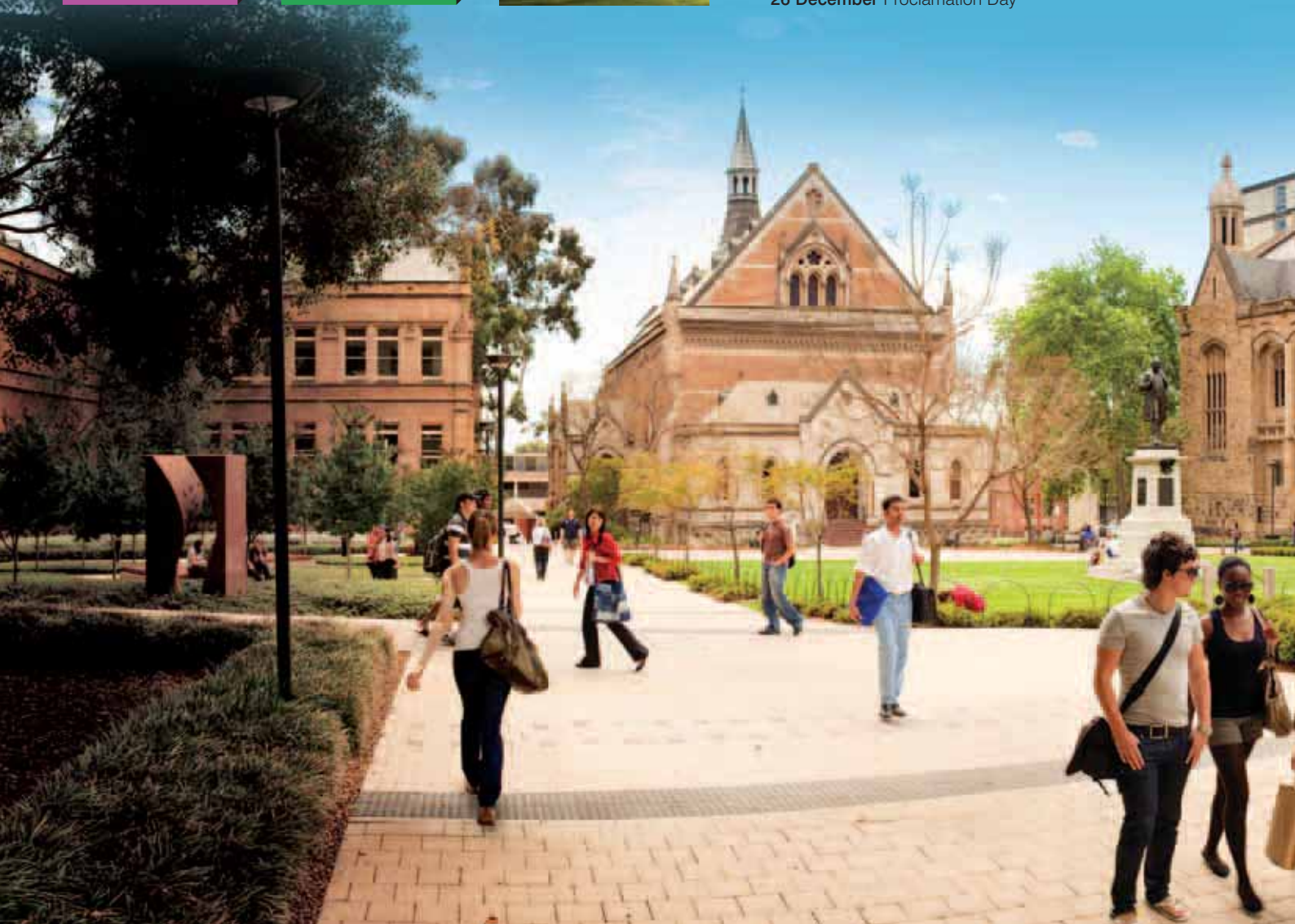


#### IMPORTANT UNIVERSITY DATES IN 2012

**3 January – 17 February** Summer school  
**13–17 February** Study Abroad & Exchange orientation  
**27 February – 15 June** Semester 1  
**2–13 April** Mid semester break  
**16–29 June** Semester 1 exams  
**16–21 July** Supplementary exams  
**30 June – 20 July** Winter school  
**2–20 July** Semester break  
**16–20 July** Study Abroad & Exchange orientation  
**23 July – 2 November** Semester 2  
**17–28 September** Mid semester break  
**3–16 November** Semester 2 exams  
**10–15 December** Supplementary exams

#### SA PUBLIC HOLIDAYS IN 2012

**2 January** New Year's Day  
**26 January** Australia Day  
**12 March** Adelaide Cup Day  
**6 April** Good Friday  
**7 April** Easter Saturday  
**9 April** Easter Monday  
**25 April** Anzac Day  
**11 June** Queens Birthday  
**1 October** Labour Day  
**25 December** Christmas Day  
**26 December** Proclamation Day





# WELCOME

Study Abroad and Exchange programs offer a unique, exciting and rewarding opportunity to explore the academic, social and cultural life of another country.

The University of Adelaide offers an inspirational and supportive study environment in which to spend a semester or two or an intensive short program of study. It is a leading research institution in a city and state rich in culture and natural attractions.

Since its establishment in 1874, the University has developed a reputation for excellence in teaching, learning and research, and is ranked in the top 1% of universities in the world. Our programs are underpinned by innovation and relevance and taught by high-quality staff who are national and international leaders in their fields.

At the University of Adelaide you will be studying in an environment that pursues excellence, values creativity, welcomes cultural diversity, and gives its graduates the opportunity to make an impact on the world.

Studying overseas can be a very challenging but rewarding experience. We invite you to challenge yourself at the University of Adelaide.

## Contents

- 4** The Adelaide Adventure
- 6** A South Australian Experience
- 8** Explore Australia
- 10** The Adelaide Advantage
- 10** Study Options at Adelaide
- 10** Study Areas
- 10** Entry Requirements
- 10** Before You Arrive
- 10** Exchange Partner Institutions
- 10** Student Profiles
- 10** How to Apply





# THE ADELAIDE ADVENTURE

**Adelaide is an attractive, well-planned city noted for its beautiful parklands, its charming historic stone architecture and its devotion to fine food, wine and the arts.**

## Getting to know Adelaide

- Capital of South Australia
  - Population: 1.2 million
  - The traditional owners are the Kaurna people of the Adelaide plains
  - 5th largest city in Australia
  - 8th most liveable city in the world\*
  - Lower cost of living than most Australian capital cities
  - Student discount on public transport
  - White sandy beaches only 20 minutes from the city
  - Gateway to the 'outback'
  - The Adelaide Fringe Festival is the second largest in the world
  - WOMADelaide, world music festival is the biggest in the southern hemisphere
  - Largest numbers of cafés and restaurants per capita in Australia
  - Adelaide has a Mediterranean climate, with warm sunny weather for much of the year
- \* EIU 2011 Liveability Survey

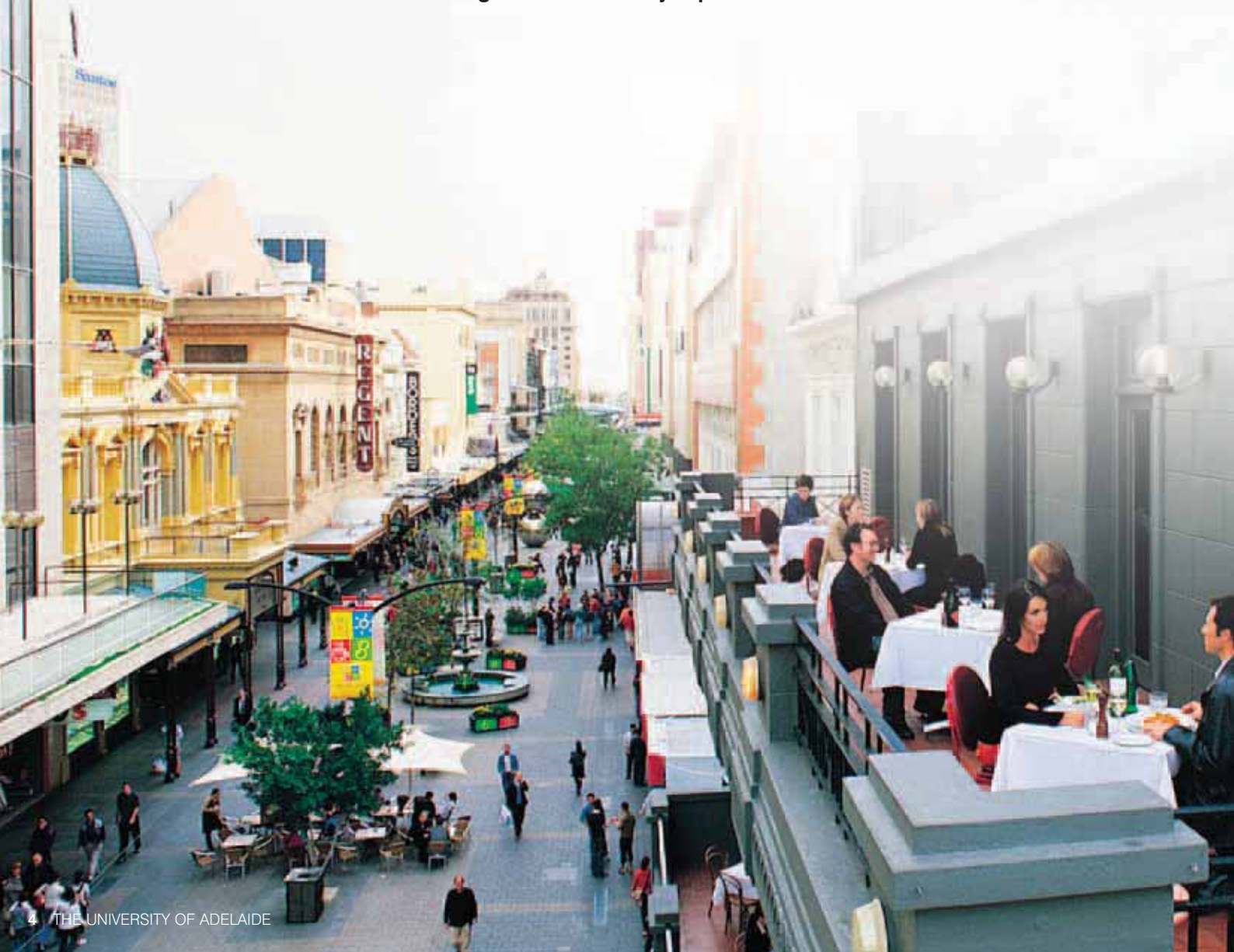
## Cost of living

Adelaide's cost of living is 23% lower than Sydney and Melbourne and 11% lower than Brisbane and Perth.\*

Your lifestyle and accommodation choice will determine how much a semester of living expenses will cost. We recommend that you budget between A\$6,500 to A\$8,500 per semester.

\* EIU 2011 Cost of Living Survey

**For more info: [www.southaustralia.com/regions/adelaide-city.aspx](http://www.southaustralia.com/regions/adelaide-city.aspx)**





# POINTS OF INTEREST

## ● WINE

Adelaide is close to some of the most famous wine districts in the world. The Barossa Valley, McLaren Vale and Adelaide Hills wineries are all within an hour's drive of Adelaide.

## ● BEACHES

Adelaide has over 60 km of beautiful beaches, great for activities like swimming, surfing, boating, fishing or just watching the sunset. Visit Semaphore, Henley Beach, Glenelg, and Brighton, just a few of the vibrant seaside areas only a short distance from Adelaide.

## ● NATURE

There are conservation and national parks only minutes from the city, perfect for bushwalking, picnics and meeting native animals. Take scenic walks at Waterfall Gully and Morialta, or visit Cleland Wildlife Park to see the kangaroos and koalas.

## ● SHOPPING

Rundle Mall in the city has the biggest concentration of department and chain stores, while Rundle Street is known for its trendy boutiques, pubs and cafes. Don't forget to visit some of the more vibrant suburban shopping areas such as Hyde Park, Norwood, Glenelg, Semaphore, Harbour Town and Marion.



## ADELAIDE EVENTS

**JAN** Tour Down Under

**FEB** Adelaide Festival of Arts  
Adelaide Fringe Festival  
Adelaide International Film Festival  
Australian Mountain Bike Festival

**MAR** Clipsal 500 V8 Supercar Championship  
WOMADelaide

**APR** Dragon Boat National Championships  
Oakbank Racing Carnival

**JUN** Adelaide Cabaret Festival

**SEP** Royal Adelaide Show

**OCT** OzAsia Festival  
Australian University Games

**NOV** Adelaide International 3 Day  
Equestrian Event  
Rescue 2012—International  
Lifesaving Championships

# A SOUTH AUSTRALIAN EXPERIENCE

[www.southaustralia.com](http://www.southaustralia.com)

## Did you know?

- 80% of Australia's wine is produced in South Australia.
- South Australia was founded by free settlers
- The Coorong, a wilderness of beaches and lagoons, is the most important wetlands in Australia.
- In 1847 German settlers established the first wineries in the Barossa Valley.
- South Australia has 13 wine regions.
- Aboriginal rock carvings and fossils found in the Flinders Ranges are believed to be the oldest in the world.
- Australia's largest river, the Murray, flows into the sea, just south of Adelaide.
- People live in underground houses in the opal-mining town of Coober Pedy.

### GREAT AUSTRALIAN BIGHT

Whale breeding grounds, massive cliffs and pounding surf.

**Distance from Adelaide:** 800 km



### BAIRD BAY

Swim with the seals.

**Distance from Adelaide:** 60 km



### PORT LINCOLN

Swim with tuna or cage dive with a great white shark.

**Distance from Adelaide:** 650 km



## Fast Facts

**European settlement:** 1836

**Population:** 1.6 million

**Area:** 985,335 km<sup>2</sup>

**Coastline:** 4,800 km (over 100 islands)

**Climate:** Mediterranean, with four seasons. **Summer** (Dec–Feb) average maximum temperature: 28°C; **Winter** (Jan–Aug) average maximum temperature: 16°C

### KANGAROO ISLAND

Explore the Remarkable Rocks, go swimming at Vivonne Bay, and meet the wildlife.

**Distance from Adelaide:** 180 km

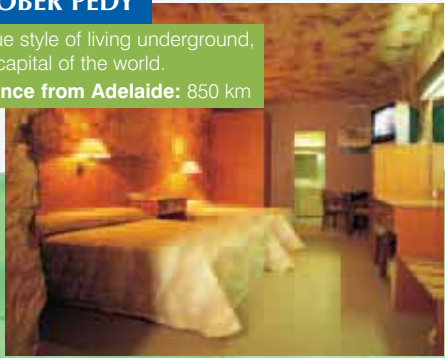




### COOBER PEDY

Unique style of living underground, opal capital of the world.

**Distance from Adelaide:** 850 km



### FLINDERS RANGES

Gateway to the outback, largest mountain range in South Australia. Bushwalker's paradise.

**Distance from Adelaide:** 450 km



### YORKE PENINSULA

Fantastic surf, fishing, camping and beautiful beaches.

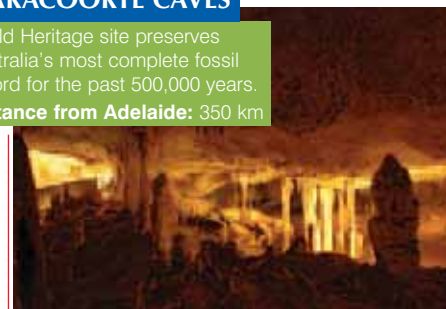
**Distance from Adelaide:** 280 km



### NARACOORTE CAVES

World Heritage site preserves Australia's most complete fossil record for the past 500,000 years.

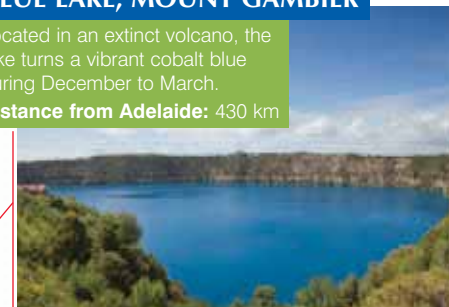
**Distance from Adelaide:** 350 km



### BLUE LAKE, MOUNT GAMBIER

Located in an extinct volcano, the lake turns a vibrant cobalt blue during December to March.

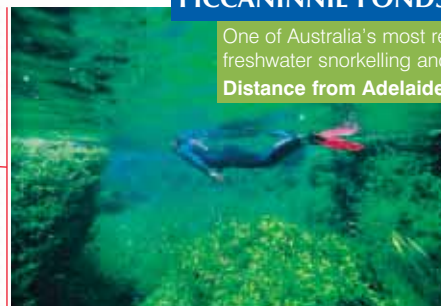
**Distance from Adelaide:** 430 km



### PICCANINNIE PONDS

One of Australia's most remarkable freshwater snorkelling and diving spots.

**Distance from Adelaide:** 480 km



### THE COORONG

Explore shimmering lagoons, towering sand dunes and diverse native wildlife.

**Distance from Adelaide:** 180 km



# EXPLORE AUSTRALIA

[www.australia.com](http://www.australia.com)

With its central location and affordable cost of living, Adelaide is a great city from which to explore Australia. There's plenty of time to visit some of Australia's famous destinations, before, after or during your semester. Whether it's a weekend trip to Sydney or Melbourne, or a two week trip to the outback during your mid semester break, Adelaide is a great launching pad.



Darwin

Broome

Perth

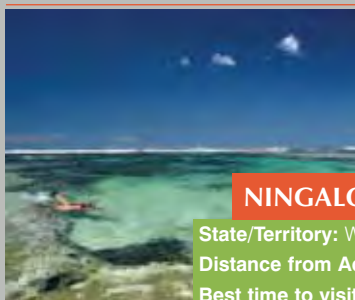
## KIMBERLEY RANGES

**State/Territory:** Western Australia  
**Distance from Adelaide:** 3000 km  
**Best time to visit:** May to August  
**Best known for:** the Bungle Bungle Ranges



## NINGALOO REEF

**State/Territory:** Western Australia  
**Distance from Adelaide:** 3725 km  
**Best time to visit:** May to August  
**Best known for:** snorkelling, whale sharks and coral reefs



## THE RED CENTRE

**State/Territory:** Outback Australia, Northern Territory & South Australia  
**Distance from Adelaide:** 1200 km (Alice Springs)  
**Best time to visit:** Depends on activity  
**Best known for:** Uluru, red sands and star gazing



## GREAT OCEAN ROAD

**State/Territory:** South Australia & Victoria  
**Distance from Adelaide:** 470 km  
**Best time to visit:** All year  
**Best known for:** Twelve Apostles, iconic surf and waterfalls



**FLIGHT TIMES FROM ADELAIDE**

MELBOURNE 1 HR 5 MINS • SYDNEY 1 HR 40 MINS • CANBERRA



## KAKADU

**State/Territory:** Northern Territory  
**Distance from Adelaide:** 3000 km  
**Best time to visit:** April to December  
**Best known for:** unique biodiversity and Aboriginal traditions

## GREAT BARRIER REEF

**State/Territory:** Queensland  
**Distance from Adelaide:** 2500 km  
**Best time to visit:** all year round  
**Best known for:** magnificent coral, scuba diving and snorkelling

## WHITSUNDAYS

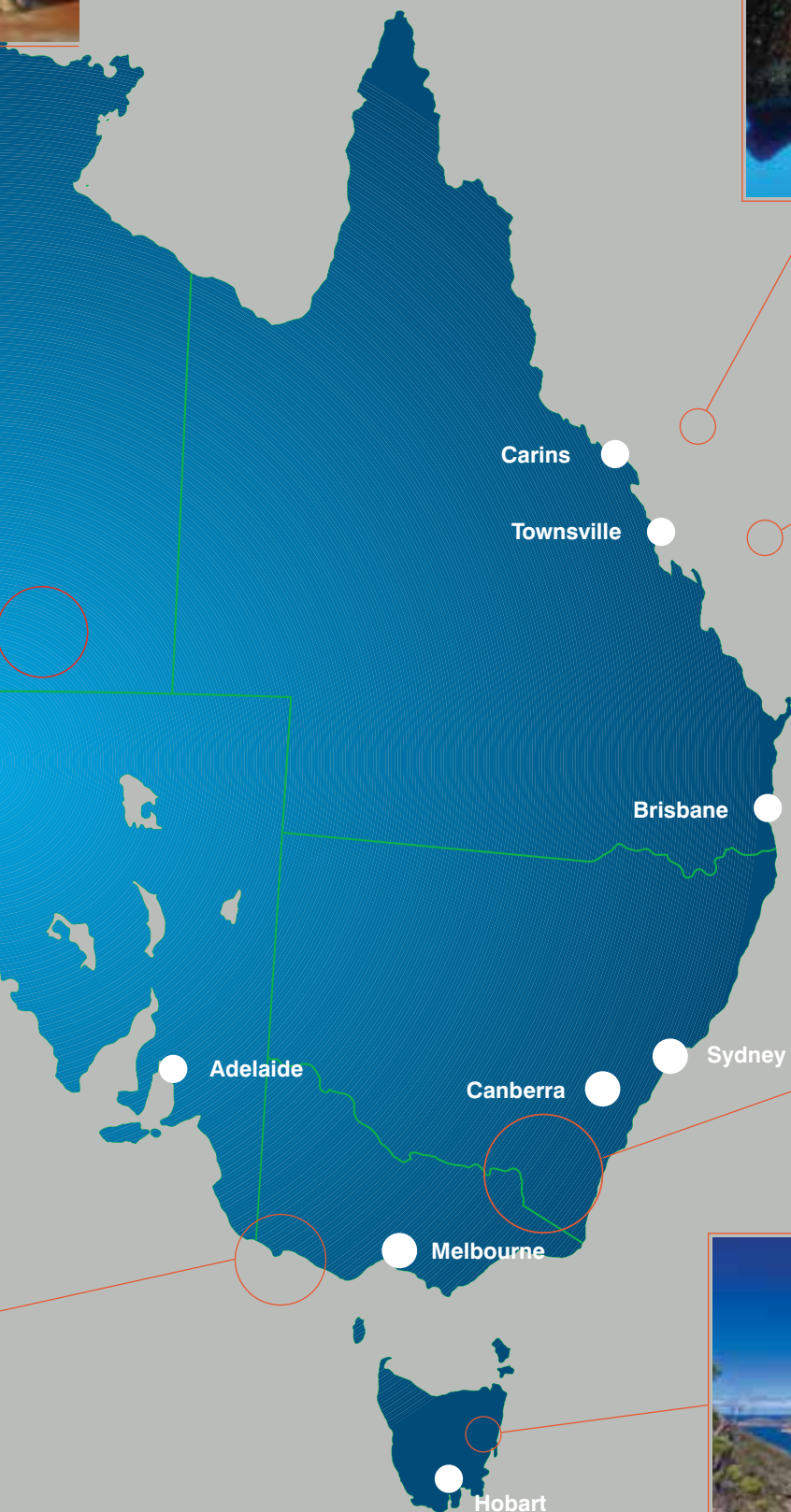
**State/Territory:** Queensland  
**Distance from Adelaide:** 2500 km  
**Best time to visit:** all year round  
**Best known for:** 74 islands, sailing and scuba diving

## AUSTRALIAN ALPS

**State/Territory:** Victoria & New South Wales  
**Distance from Adelaide:** 980 km  
**Best time to visit:** all year round; snow season: June–October  
**Best known for:** ski resorts and summer hiking; Falls Creek, Thredbo, Perisher, Mt Hotham are all ski resort towns open in winter and summer

## FREYCINET NATIONAL PARK

**State/Territory:** Tasmania  
**Distance from Adelaide:** 1000 km  
**Best time to visit:** all year round  
**Best known for:** Wineglass Bay, camping and bushwalking



1 HR 40 MINS • **BRISBANE** 2 HRS 30 MINS • **PERTH** 3 HRS 10 MINS • **DARWIN** 3 HRS 35 MINS • **ALICE SPRINGS** 2 HRS

# THE ADELAIDE ADVANTAGE

[www.adelaide.edu.au](http://www.adelaide.edu.au)

Since its establishment in 1874, the University has developed a reputation for excellence in teaching, learning and research.

## About the University

- 25,000 students
- 6,000 international students
- Five Faculties
- Third oldest university in Australia
- Member of the Group of Eight
- Historic buildings
- Wide course range
- Internships
- Global reputation
- Ranked in the top 1% of universities worldwide
- Associated with 5 Nobel Prize winners

## Vibrant campus lifestyle

### Campuses

[www.adelaide.edu.au/campuses](http://www.adelaide.edu.au/campuses)

The main campus is located on North Terrace in the city centre, adjacent to the State Library, Festival Centre, the South Australian Museum, the Art Gallery of South Australia, Zoological Gardens, the National Wine Centre, and the Botanical Gardens.

The three other specialist campuses are at:

- **Waite:** plant science, wine studies
- **Roseworthy:** agriculture, animal and vet science
- **Thebarton:** innovation and commercialisation of research

### Social aspects

[www.aau.org.au](http://www.aau.org.au)

- Over 80 sport, social and cultural clubs to join; try the gliding or scuba diving clubs
- Lunchtime activities such as music, market stalls, barbecues
- Gym and sports fields
- Hub Central—everything in one place; food, advice, computer pools, and a place just to hang out

## Supportive networks

[www.international.adelaide.edu.au/living/guide](http://www.international.adelaide.edu.au/living/guide)

- Free airport pickup
- Fun and informative Orientation program
- Join the 'Exchange Student Network'—for both Study Abroad and Exchange students—this club is all about creating friendships, having fun and socialising
- Dedicated student advisors
- Health, career, employment and disability centres on campus
- Award-winning student support programs

### International Student Centre

[www.international.adelaide.edu.au/support/isc](http://www.international.adelaide.edu.au/support/isc)

The International Student Centre provides support services for all international students to help students from a diverse range of cultural backgrounds succeed in their studies.

These include:

- welcome service (airport pick-up on arrival and transfer to accommodation)
- guaranteed temporary accommodation on arrival (if requested beforehand)
- comprehensive orientation program
- social programs
- assistance with student visas and health insurance
- welfare support
- workshops on topics such as managing money, long distance relationships, motivation, goal setting and time management.



## Accommodation

[www.adelaide.edu.au/accommodation](http://www.adelaide.edu.au/accommodation)

- Specialist accommodation office
- University managed accommodation  
15 minutes walk to the campus
- Rental housing database just for students

The University assists Study Abroad and Exchange students to obtain suitable housing. Students may opt for any of the following options.

### University accommodation: The Village

[www.adelaide.edu.au/accommodation/uni/thevillage](http://www.adelaide.edu.au/accommodation/uni/thevillage)

The Village was designed to create a relaxed, friendly environment with landscaped gardens, open spaces and community facilities. The 400-bed facility is only a 15-minute walk to campus and provides a choice of fully furnished townhouses and apartments with everything provided to make living and studying comfortable.

### Residential colleges

[www.adelaide.edu.au/accommodation/colleges](http://www.adelaide.edu.au/accommodation/colleges)

Five residential colleges are affiliated with the University: Aquinas, Lincoln, St Ann's, and St Mark's Colleges are primarily for undergraduate students; and Kathleen Lumley College is mainly for postgraduate and mature-age students. These colleges are situated in North Adelaide, within easy walking distance of the main North Terrace campus.

A residential college is also located on the Roseworthy campus, one hour's drive north of the city, for students who are based there.

Most college rooms are single study bedrooms. All colleges are co-educational, with shared bathrooms. The colleges generally provide three meals per day—no individual cooking facilities are available



### Student hostels

[www.adelaide.edu.au/accommodation/options/hostels](http://www.adelaide.edu.au/accommodation/options/hostels)

Hostels usually offer fully furnished study bedrooms with access to shared kitchens, bathrooms, and living areas. They are normally privately-run and can vary considerably in size (from 5–50 bedrooms). Charges generally include electricity and linen service.

Students usually cook for themselves, but some hostels offer meals for an additional fee. Most hostels are located within a 20-minute walk, bicycle or bus ride from the University's city campus on North Terrace.

### Rental accommodation

[www.adelaide.edu.au/accommodation/options/private](http://www.adelaide.edu.au/accommodation/options/private)

Renting is a cheap and popular option with students. Generally a 6- or 12-month lease arrangement is required, with a refundable bond of four weeks' rent in advance.

Rental accommodation is often unfurnished, so students may need to purchase furniture upon arrival (second-hand shops and garage sales are useful for this). Electricity, gas, water and telephone are extra costs.

Alternatively, students may choose to share a house or apartment with others. Opportunities for share housing are advertised by the University's Accommodation Service.

### Temporary accommodation

Students may reserve temporary accommodation for their first week in Adelaide. Most temporary accommodation is in the form of a single furnished bedroom in a hostel or residential college.

# STUDY OPTIONS AT ADELAIDE

[www.international.adelaide.edu.au/study/sa-e](http://www.international.adelaide.edu.au/study/sa-e)

**Students who want to undertake a short-term study option at the University of Adelaide have three choices: Study Abroad, Exchange or Short Programs.**



## Study Abroad

- Students are normally enrolled in a university in their home country
  - Students may enrol for one or two semesters of study
  - Students may commence in Semester 1 (February) or 2 (July) each year
  - Students may enrol in courses across several different disciplines
  - Postgraduate level study is available for qualified applicants subject to departmental approval
  - The study program can include an internship (separate application required)
  - Two Study Abroad programs to choose from; **12 units** (normally 4 courses) or **9 units** (normally 3 courses)
  - Tuition fees are based on the program selected (2012 fees quoted):
    - 1) 12 - unit Study Abroad program (standard enrolment for one semester: AUD\$10,200) OR
    - 2) 9 - unit Study Abroad program (75% of full workload: AUD\$7,650)
  - In 2013 the following fees will apply:
    - 1) 12 - unit program: AUD\$10,800
    - 2) 9 - unit program: AUD\$8,100
- There will also be a Student Service Fee of approx AUD\$200

## Exchange

- For students who are nominated by one of the University's overseas partner universities
- Tuition fees are waived at the University of Adelaide
- Students may enrol for one or two semesters of study
- Students may commence in Semester 1 (February) or 2 (July) each year
- Students may enrol in courses across several different disciplines
- Postgraduate level study available for qualified applicants subject to departmental approval
- The study program can include an internship (separate application required)





## Short programs

### Southern hemisphere winter school

[www.adelaide.edu.au/summerandwinterschool](http://www.adelaide.edu.au/summerandwinterschool)

- Held over the short winter break in June/ July, four weeks in duration
- Short program package includes two courses, cultural excursions, field trips, accommodation
- Tuition fee is payable
- Application deadline in April
- More information: [www.adelaide.edu.au/summerandwinterschool/studyabroad](http://www.adelaide.edu.au/summerandwinterschool/studyabroad)

### Combination programs

- Semester length program (either study abroad or exchange) plus a summer or winter intensive course

### Refund Policy

Students should read the University's policy on refunds and adjustments for international students before accepting their offer of admission. Policy details can be reviewed at: [www.adelaide.edu.au/student/finance/international/payment/refunds](http://www.adelaide.edu.au/student/finance/international/payment/refunds)

## Internships

[www.hss.adelaide.edu.au/internships](http://www.hss.adelaide.edu.au/internships)

- Available in the Faculty of Humanities & Social Sciences
- Offered in the July semester only
- Academically based, credit-bearing courses
- Competitive entry with a minimum of a credit average required for admission
- Separate application
- Must be enrolled in a Study Abroad or Exchange program

### Two internship schemes are available:

#### Arts internship scheme

- Worth 6 units (equivalent of 2 courses)
- Offered in the July semester only
- Any Humanities discipline is available for the internship including English, Media, Linguistics, Asian Studies, Anthropology, History, Philosophy, Development Studies, International Studies and Politics.
- Application deadline 31 March

### SA Internship and Parliamentary Internship Program

[www.hss.adelaide.edu.au/historypolitics/politics/intern.html](http://www.hss.adelaide.edu.au/historypolitics/politics/intern.html)

- Worth 6 units (equivalent of 2 courses)
- Offered in the July semester only
- Placement in the State Parliament of South Australia or with one of a range of public sector agencies.
- Selection to the program is competitive and admission cannot be guaranteed.
- Students interested in the parliamentary internship program must contact the Academic Coordinator, Dr Clement Macintyre, as early as possible in the year (preferably by the end of April), to maximise their chances of gaining a place in the program (please refer to website above). Please note that you must also apply for the Study Abroad or Exchange program in the normal way.

# STUDY AREAS

[www.international.adelaide.edu.au/study/sa-ex/study.html](http://www.international.adelaide.edu.au/study/sa-ex/study.html)



## Faculty of Engineering, Computer & Mathematical Sciences

[www.ecms.adelaide.edu.au](http://www.ecms.adelaide.edu.au)

**Did you know...** staff from the Faculty of Engineering, Computer & Mathematical Sciences developed the burner that was used in the torches for the Sydney 2000 and Athens 2004 Olympic Games?

### Disciplines

- Computer Science
- Engineering—over 19 undergraduate areas of study including: Aerospace, Architectural, Chemical, Environmental, Pharmaceutical, Sports and Sustainable Energy
- Mathematics
- Innovation and Entrepreneurship
- Project Management
- Science and Technology Commercialisation

### Top courses

- Introduction to Mining Engineering
- Aeronautical Engineering
- Sustainability and the Environment

## Faculty of Health Sciences

[www.health.adelaide.edu.au](http://www.health.adelaide.edu.au)

**Did you know...** the Faculty of Health Sciences has produced two Nobel Prize winners (Sir Howard Walter Florey and Dr J Robin Warren)?

### Disciplines

- Anatomical Sciences
- Pathology
- Pharmacology
- Psychology
- Public Health

### Top courses

- Exploring Psychology
- Human Biology

## Faculty of Humanities & Social Sciences

[www.hss.adelaide.edu.au](http://www.hss.adelaide.edu.au)

**Did you know...** the Nobel Prize winner for literature in 2003, J M Coetzee, is a visiting Professor at the University of Adelaide?

### Disciplines

- Anthropology
- Australian Studies
- Geography
- German
- Languages
- Media
- Politics

### Top courses

- Ancient Medicine and its Legacy
- Consuming Passions: Anthropology of Food and Drink
- Contemporary Australian Culture
- Footprints on a Fragile Planet
- From Elvis to U2
- Popular Culture: Passion, Style and Vibe





## How do you find courses?

Study Abroad and Exchange students:  
[www.international.adelaide.edu.au/study/sa-ex](http://www.international.adelaide.edu.au/study/sa-ex)

Course search and timetable information: [access.adelaide.edu.au/courses/search.asp](http://access.adelaide.edu.au/courses/search.asp)

Faculty/School/Discipline websites:  
[www.adelaide.edu.au/departments/academic](http://www.adelaide.edu.au/departments/academic)

Please refer to Course Planner for current course information: [access.adelaide.edu.au/courses/search.asp](http://access.adelaide.edu.au/courses/search.asp)

## Faculty of the Professions

[www.adelaide.edu.au/professions](http://www.adelaide.edu.au/professions)

**Did you know...** the School of Business is AACSB accredited?

### Disciplines

- Accounting
- Architecture
- Business
- Finance
- Economics
- Education
- Law
- Marketing
- Urban Design

### Top courses

- Anti-Discrimination and Equality Law
- Australia and the Global Economy
- Consumer Behaviour
- Environmental Economics
- Human Environments: Design and Representation
- Marketing Communications

## Faculty of Sciences

[www.sciences.adelaide.edu.au](http://www.sciences.adelaide.edu.au)

**Did you know...** renowned Antarctic explorer and scientist, Sir Douglas Mawson, lectured at the University of Adelaide?

### Disciplines

- Agriculture
- Animal Science
- Applied and Molecular Ecology
- Food and Nutrition Science
- Global Food and Agricultural Business
- Plant Science
- Science (Biochemistry, Chemistry, Environmental Biology, Evolutionary Biology, Genetics, Geology and Geophysics, Marine Biology, Microbiology and Immunology, Optics and Photonics, Physics and Mathematical Physics, and Physiology)
- Wine sciences

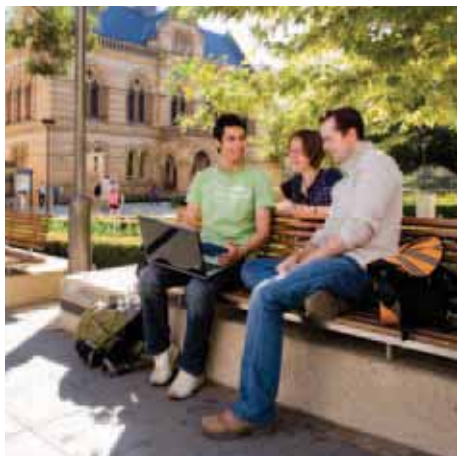
### Top courses

- Astronomy
- Consumers, Food and Health
- Environmental and Analytical Chemistry
- Frontiers in Marine Biology
- Marine Ecology
- Medicinal and Biological Chemistry
- Space Science and Astrophysics
- Wine and Society

### What's not available?

- Courses in Medicine
- Courses in Dentistry
- Some music and media courses (please refer to website above)

# ENTRY REQUIREMENTS



## Academic entry requirements

[www.international.adelaide.edu.au/study/sa-ex/apply.html](http://www.international.adelaide.edu.au/study/sa-ex/apply.html)

Students should have completed at least one year at their home university at the time of participation in the Study Abroad or Exchange program. Students will need to provide evidence of a GPA of at least 3.0/4.0, or grades equivalent to a B/Credit average, in order to gain admission.

## English language entry requirements

Study Abroad and Exchange students whose first language is not English will need to provide evidence of English language proficiency as follows:

- **IELTS:** Overall band score of at least 6.0 with a minimum band score of 6.0 in Writing and Speaking and 5.5 in Reading and Listening
- **Paper-based TOEFL:** Score of at least 550 with a minimum score of 4.0 in the Test of Written English (TWE)
- **Computer-based TOEFL:** Score of at least 213 with a minimum score of 4.0 in Essay Rating
- **Internet-based TOEFL:** total score of 80 with minimum of 20 in Writing and Speaking and 18 in Reading and Listening

## Law students

Students who wish to study Law must achieve a higher level of English language proficiency, as follows:

- **TOEFL:** Minimum score of 250/600 with an Essay Rating/TWE of 5.0; or
- **IELTS:** Minimum overall band score of 7.0 with a minimum band score of 7.0 in Writing and Speaking and 6.5 in Reading and Listening.

These tests must have been taken in the two years preceding the application.

## Students from Norway, Sweden, Denmark and Germany

Students from Norway, Sweden, Denmark and Germany may submit alternative evidence of their English language proficiency (except for Law—see above), as follows:

- **Germany:** a grade of at least 'satisfactory' in English in the final year of high school (either Abitur or Fachabitur English is acceptable), plus a score of at least 'B' in each section of the DAAD English Language Proficiency Test
- **Norway:** a minimum grade of 4 in English in upper secondary school Vitnemal fra de Videregående Skolen

- **Sweden:** a minimum grade of VG in English in upper secondary school Avgangsbetyg
- **Denmark:** for Exchange students, a grade of at least 9 in English language in the final year of upper secondary school, or the recommendation of the home university.

Please note that all students from countries where English is not the first language must provide a TOEFL or IELTS score if they wish to study Law.

## Pre-enrolment English Program

[www.adelaide.edu.au/elc/courses/pep](http://www.adelaide.edu.au/elc/courses/pep)

Students who do not meet these requirements may consider enrolling in the Pre-enrolment English Program (PEP). The length of this program depends on the current level of English—for example, a student with an IELTS score of 5.5 would require a PEP of 10–15 weeks. Please note:

- The cost of the PEP is not covered by the exchange program—students who enrol in the PEP will need to pay for the cost of the program.
- Students who are citizens of countries classified by Australian Government immigration regulations as Assessment Levels 3–4 must submit an IELTS test result as part of their student visa application, even if the University has accepted alternative evidence of English language proficiency. No other test (including the TOEFL) is accepted for this purpose.

Students who wish to study English language only may be interested in the English Language Centre's General English for Academic Purposes (GEAP) program. This is a standalone program that allows students to develop their English language skills, and includes an IELTS preparation stream.

For more information about English programs please email: [elc@adelaide.edu.au](mailto:elc@adelaide.edu.au)



# BEFORE YOU ARRIVE

## Overseas Student Health Cover

[www.international.adelaide.edu.au/costs/insurance.html](http://www.international.adelaide.edu.au/costs/insurance.html)

All international students studying in Australia, except students from Norway and Sweden, must purchase health insurance through the Overseas Student Health Cover scheme (OSHC) for the duration of their studies in Australia.

Overseas Student Health Cover (OSHC) is insurance that provides cover on the costs for medical and hospital care which international students may need while in Australia. OSHC will also pay for many prescription drugs and emergency ambulance transport.

Students from Sweden and Norway who take out health insurance from their government student support agency (the CSN in Sweden and the Lånekassen in Norway) are not required to purchase OSHC.

The OSHC (basic cover) pays 85% of the government-scheduled fee for each consultation with private doctors, private specialists, and for surgery, X-rays and pathology. It provides free accommodation and treatment in public hospitals and at the University health service.

Students may wish to consider taking out additional private medical insurance for dental work, physiotherapy, optometry, and private hospital treatment.

## Visas

Students accepted to study at the University of Adelaide will need to apply for a student visa at their nearest Australian Embassy or Consulate.

When the payment for one semester's tuition fees and health insurance is received (payment can be made by credit card or bank cheque), the University will issue a Confirmation of Enrolment document (COE), which will authorise the student to apply for a student visa.

Visa application requirements and processing times vary considerably between countries, so students should contact their nearest Australian Consulate or Embassy for information as early as possible in the application process.

## Work restrictions

The student visa allows international students to work during their time in Australia. However, students are not allowed to work until they have commenced their studies.

Students are able to work up to 20 hours per week during the semester, and unrestricted hours during the University vacations. However, employment is not easy to find and there are limited opportunities for employment for students on campus.

In addition, we recommend that students do not undertake too much employment since they will need to have sufficient time to successfully complete their studies in Australia.



# EXCHANGE PARTNER INSTITUTIONS

[www.international.adelaide.edu.au/study/sa-ex/exchange.html](http://www.international.adelaide.edu.au/study/sa-ex/exchange.html)

The University of Adelaide has established exchange programs with the following institutions. Some agreements are discipline-specific (e.g. just for law students), while others are open to all students. Please check with your home institution for information on their process and application deadlines. Students from universities not listed below, or who do not obtain an Exchange place are welcome to apply as a Study Abroad student. Please refer to the above website for the most up to date list of exchange partners.

COUNTRY	INSTITUTION
AUSTRIA	University of Leoben
CANADA	Dalhousie University
	University of British Columbia
	University of Calgary
	University of Guelph
	HEC Montréal
	McMaster University
	McGill University
	Queen's University
	University of Toronto
	University of Victoria
CHILE	Pontificia Universidad Católica de Chile
	Universidad de Chile
	Universidad de Talca
	Universidad Técnica Federico Santa María
CHINA	Harbin Institute of Technology
	Hebei North University
	Nanjing University
	Shandong University
	Tsinghua University
	Tsinghua University School of Law
CZECH REPUBLIC	Czech Technical University in Prague
DENMARK	Aarhus School of Business
	Technical University of Denmark (DTU)
	University of Copenhagen
FINLAND	Aalto University
FRANCE	Université d'Avignon et des pays de Vaucluse
	ESCP-Europe
	University of Poitiers (Law)
	Université Pierre Mendès Grenoble 2
	Sciences Po, Paris
	Strasbourg University
	Université Stendhal, Grenoble 3
GERMANY	<b>Baden-Württemberg Universities</b> (Freiburg, Heidelberg, Hohenheim, Karlsruhe, Konstanz, Mannheim, Stuttgart, Tübingen, Ulm)
	European Business School
	Free University of Berlin
	Leipzig Graduate School of Management
	Münster University of Applied Sciences
	Technical University of Munich
GREECE	University of Athens
HONG KONG SAR	Chinese University of Hong Kong
	University of Hong Kong
INDONESIA	Universitas Gadjah Mada
ITALY	Bocconi University (Economics, Law and Commerce)
	Istituto Universitario di Studi Superiori di Pavia
	Università Cattolica del Sacro Cuore
JAPAN	Hiroshima Shudo University
	Hosei University
	Kansai University
	Kansai Gaidai University
	Meiji University
	Okayama University

COUNTRY	INSTITUTION
JAPAN (cont'd)	Osaka University
	University of Tsukuba
	Waseda University
KOREA	Korea University
	Pusan National University
	Seoul International University
	Yeungnam University
	Yonsei University
MALAYSIA	Universiti Sains Malaysia
NETHERLANDS	Maastricht University School of Business
	University College, Maastricht
	Utrecht University
NEW CALEDONIA	Université de la Nouvelle-Calédonie
NEW ZEALAND	University of Canterbury
NORWAY	University of Oslo
PERU	University of the Pacific
SINGAPORE	National University of Singapore
	Singapore Management University
SOUTH AFRICA	Stellenbosch University
SPAIN	University of Granada
	University Pompeu Fabra
	University of Santiago de Compostela
	University of Valencia
SWEDEN	Lund University
	University of Gothenburg
	Royal Institute of Technology (KTH), Stockholm
	Uppsala University
THAILAND	Mahidol University
	Thammasat University
UNITED KINGDOM	University College, London
	University of Bristol
	University of Birmingham
	University of East Anglia
	University of Edinburgh
	University of Exeter
	University of Glasgow
	University of Leeds
	University of Newcastle
	University of Nottingham
	University of Sheffield
USA	University of Arizona
	University of California
	College of William and Mary
	Colorado School of Mines
	University of Connecticut
	Cornell University (College of Agriculture & Life Sciences)
	Indiana University
	University of Illinois Urbana-Champaign
	University of Massachusetts
	University of Oregon
	Pace University
	Pitzer College
	Purdue University, Indiana
	Texas A&M University



# PROFILES

## **VIRGINIE LÉONCE**

France

"I've been to Melbourne and Perth, but found Adelaide to be more easygoing. It has all the facilities of a modern city, with the charm of a smaller town. It's easy to meet people and there are no boundaries between the different social classes and ethnic communities. There are a lot of opportunities here and people are interested in new ideas. I was so impressed by the cultural mix that I organised a multicultural conference and concert, bringing people together from different communities to share their art, dance, music and food."



## **KRISTOFER HELGEN**

United States of America

"The lifestyle, the culture and the intellectual environment all add up to make Adelaide an ideal place to study. The city has really good institutions—libraries, art galleries, museums, and universities, and they are all centred in one part of town, which gives it a great feel."

"It's also much more cost effective compared to other places I could have lived, like Sydney or New York. The research funding and scholarship stipend stretched further than they might have, and it was a convenient base from which to travel north for field trips."



## **KAROLINA GAJEWSKI**

CANADA

"Adelaide has a lot in common with Calgary yet there are some wonderful subtleties that make it a welcome change. The music and nightlife scenes are quite different to back home—I've been charged creatively, socially and culturally by the vibrant myriad of festivals and local talent, and enjoyed immersing myself in the dining and coffee culture."



## **TOBY TENNENT**

United Kingdom

"As a city, Adelaide is pretty much perfect. It's a nice environment for learning and the people are great. My advice is to always look for the best. You'll find it here."

# HOW TO APPLY

[www.international.adelaide.edu.au/study/sa-ex/apply.html](http://www.international.adelaide.edu.au/study/sa-ex/apply.html)

## APPLICATION DEADLINES

**1 December 2011**

For February commencement (Semester 1)

**15 May 2012**

For July commencement (Semester 2)

**1 December 2012**

For February commencement (Semester 1)

Exchange students must apply through their home university exchange advisor. Please refer to the list of the University of Adelaide's exchange partners (at the end of this publication) to determine if you are eligible to apply as an Exchange student.

Study Abroad students may apply for the Study Abroad program by completing the application form at the back of this prospectus and sending it to direct to the University of Adelaide or via one of our representatives in your home country.

### **Study Abroad, International Office**

The University of Adelaide  
South Australia 5005, Australia

**T:** +61 8 8313 8220 **F:** +61 8 8313 3988

**E:** [int-inbound@adelaide.edu.au](mailto:int-inbound@adelaide.edu.au)

For a full list of University of Adelaide representatives in your country visit [www.adelaide.edu.au/study/international/agents](http://www.adelaide.edu.au/study/international/agents)







## APPLICATION FORM

## ADELAIDE ABROAD - STUDY ABROAD PROGRAM

Please attach  
a passport size  
photo here.

This application is for students who are applying from universities with whom the University of Adelaide does not have a bilateral exchange agreement.

Exchange students should apply through their home university.

## PERSONAL DETAILS

<input type="checkbox"/> Mr <input type="checkbox"/> Mrs <input type="checkbox"/> Ms <input type="checkbox"/> Miss	Surname:
Given Names:	Sex: <input type="checkbox"/> Male <input type="checkbox"/> Female
Citizenship:	Country of Birth:
Date of Birth: <u>  </u> <u>  </u> / <u>  </u> <u>  </u> / <u>  </u> <u>  </u> <u>  </u> <u>  </u>	

## CONTACT DETAILS

Email:	Phone:
Home Address:	Term Address (if different):
Postcode:	Postcode:
Country:	Country:

## COMMENCEMENT DETAILS

Year:	Starting Semester: <input type="checkbox"/> 1st Semester (February) <input type="checkbox"/> 2nd Semester (July)	Length: <input type="checkbox"/> 1 Semester <input type="checkbox"/> 2 Semesters
Study Abroad program options: <input type="checkbox"/> 12 units <input type="checkbox"/> 9 units		

## ACADEMIC DETAILS

Name of university/college:		
Name of current degree (ie, BA):	Major field of study:	
Degree start date: <u>  </u> <u>  </u> / <u>  </u> <u>  </u> / <u>  </u> <u>  </u> <u>  </u> <u>  </u>	Expected completion date of current degree: <u>  </u> <u>  </u> / <u>  </u> <u>  </u> / <u>  </u> <u>  </u> <u>  </u> <u>  </u>	Number of semesters completed:

## ENGLISH PROFICIENCY

Proficiency in English is essential for successful study at the University. All overseas applicants must demonstrate an acceptable level of English proficiency to gain admission to the University. Please indicate below your current English proficiency and attach certified copies of your test results if required.

First language is English: ☐ Yes ☐ No **If 'No', provide the results from one of the following English tests below:**

IELTS Overall Band Score: TOEFL Score and type of test:

Other English proficiency:

Please ensure that your English proficiency test is appropriate for your visa application. This information is available from the Department of Immigration and Citizenship: [www.immi.gov.au](http://www.immi.gov.au)

## OTHER REQUIRED DOCUMENTATION

<input type="checkbox"/> A copy of your English proficiency test (if applicable)	<input type="checkbox"/> Certified copy of your academic transcript (in English)
<input type="checkbox"/> Passport size photo	<input type="checkbox"/> A copy of the information page of your passport

## PROGRAM OF STUDY AT THE UNIVERSITY OF ADELAIDE

List the courses you wish to take at the University of Adelaide and the semesters in which they are taught. Information about courses is available at:  
<http://access.adelaide.edu.au/courses/search.asp>

### NOTES:

- Some courses will have prerequisite listed. Please ensure that you bring with you, to Adelaide, syllabus details of the appropriate subjects studied at your home institution.
- Courses that are listed as not available for Non-Award Study are available to all Study Abroad students.
- Please note that postgraduate level courses are normally not available to undergraduate students. **This includes any courses which form part of a Graduate Diploma course or a Masters program.**
- Flinders University subjects taught at the University of Adelaide are not available to Study Abroad students.
- 12 units constitute a 100% load for one semester, and 24 units for two semesters, 9 units constitute a 75% load for one semester.

For a full list of the course restrictions, please consult: [www.international.adelaide.edu.au/study/sa-ex/study.html](http://www.international.adelaide.edu.au/study/sa-ex/study.html)

SEMESTER 1 (February–July)		Year:		
Course Code	Course Title	Units	Required by your home institution?	
			<input type="checkbox"/> Yes	<input type="checkbox"/> No
			<input type="checkbox"/> Yes	<input type="checkbox"/> No
			<input type="checkbox"/> Yes	<input type="checkbox"/> No
			<input type="checkbox"/> Yes	<input type="checkbox"/> No
			<input type="checkbox"/> Yes	<input type="checkbox"/> No
			<input type="checkbox"/> Yes	<input type="checkbox"/> No

SEMESTER 2 (July–Nov)		Year:		
Course Code	Course Title	Units	Required by your home institution?	
			<input type="checkbox"/> Yes	<input type="checkbox"/> No
			<input type="checkbox"/> Yes	<input type="checkbox"/> No
			<input type="checkbox"/> Yes	<input type="checkbox"/> No
			<input type="checkbox"/> Yes	<input type="checkbox"/> No
			<input type="checkbox"/> Yes	<input type="checkbox"/> No
			<input type="checkbox"/> Yes	<input type="checkbox"/> No

## DECLARATION

I declare that the above information is correct, and I understand that admission to the University of Adelaide as a Study Abroad student does not entitle me to be awarded a qualification from the University of Adelaide.

Student Signature:

Date:       /       /            

If you have any queries about this application or the University's Study Abroad Program, please contact:

**Adelaide Abroad - Study Abroad Program**, International Office, University of Adelaide, SA 5005 Australia

**Phone:** +61 8 8303 8220 **Fax:** +61 8 8303 3988 **Email:** [int-inbound@adelaide.edu.au](mailto:int-inbound@adelaide.edu.au)

**Web:** [www.international.adelaide.edu.au/study/sa-ex/](http://www.international.adelaide.edu.au/study/sa-ex/)







# ADELAIDE & SOUTH AUSTRALIA

**CAPITAL** Adelaide

**POPULATION** South Australia—1.6m, Adelaide—1.2 m

**AREA** 985,335km<sup>2</sup>

**COASTLINE** 4,800km (with over 100 islands)

**OFFICIAL LANGUAGE** English

**CURRENCY** Australian dollar (A\$)

**CLIMATE** (average max.): summer (Dec—Feb) 28°C, winter (Jun—Aug) 16°C

**ECONOMY** major industries include bioscience, defence, minerals and energy, wine and automotive production.

- Lowest cost of living of the mainland capital cities, and high standard of living
- Attractive, friendly, safe and well-planned city
- Student discounts on public transport
- Mediterranean climate and an outdoor lifestyle
- White sandy beaches only 20 minutes from the city
- Multicultural city with people from over 200 different countries of origin

## Education Services for Overseas Students Act

The Education Services for Overseas Students (ESOS) Act 2000 provides consumer protection to international students studying in Australia. The Commonwealth Government is committed to ensuring that students receive quality tuition, are treated fairly regarding payment of tuition fees and receiving refunds, and are offered support services to assist them to settle into Australia to successfully complete their studies.

This Act also requires that the University assist the Government in checking that international students comply with their visa conditions, and advise the Department of Immigration and Citizenship if its students breach their visa conditions.

More information is available on the University's ESOS website at [www.adelaide.edu.au/esos](http://www.adelaide.edu.au/esos)

## DISCLAIMER

The information contained in this publication is correct at the time of printing but may be subject to change without notice. The University of Adelaide assumes no responsibility for the accuracy of information provided by third parties. Please note that due to continual improvement, staff availability and student demand, the precise number of courses (and their unit value) to be offered in any one year may vary. Courses are subject to such quotas as may need to be imposed.



By printing this publication with Finsbury Green compared with a non-green printer the University of Adelaide has made CO<sub>2</sub> savings of 1,080 kgs.

**For further information please contact:**

International Office  
The University of Adelaide,  
South Australia 5005 Australia

**Telephone:** +61 8 8313 8220

**Fax:** + 61 8 8303 3988

**Email:** [int-inbound@adelaide.edu.au](mailto:int-inbound@adelaide.edu.au)

**Web:** [www.international.adelaide.edu.au](http://www.international.adelaide.edu.au)



[www.adelaide.edu.au](http://www.adelaide.edu.au)