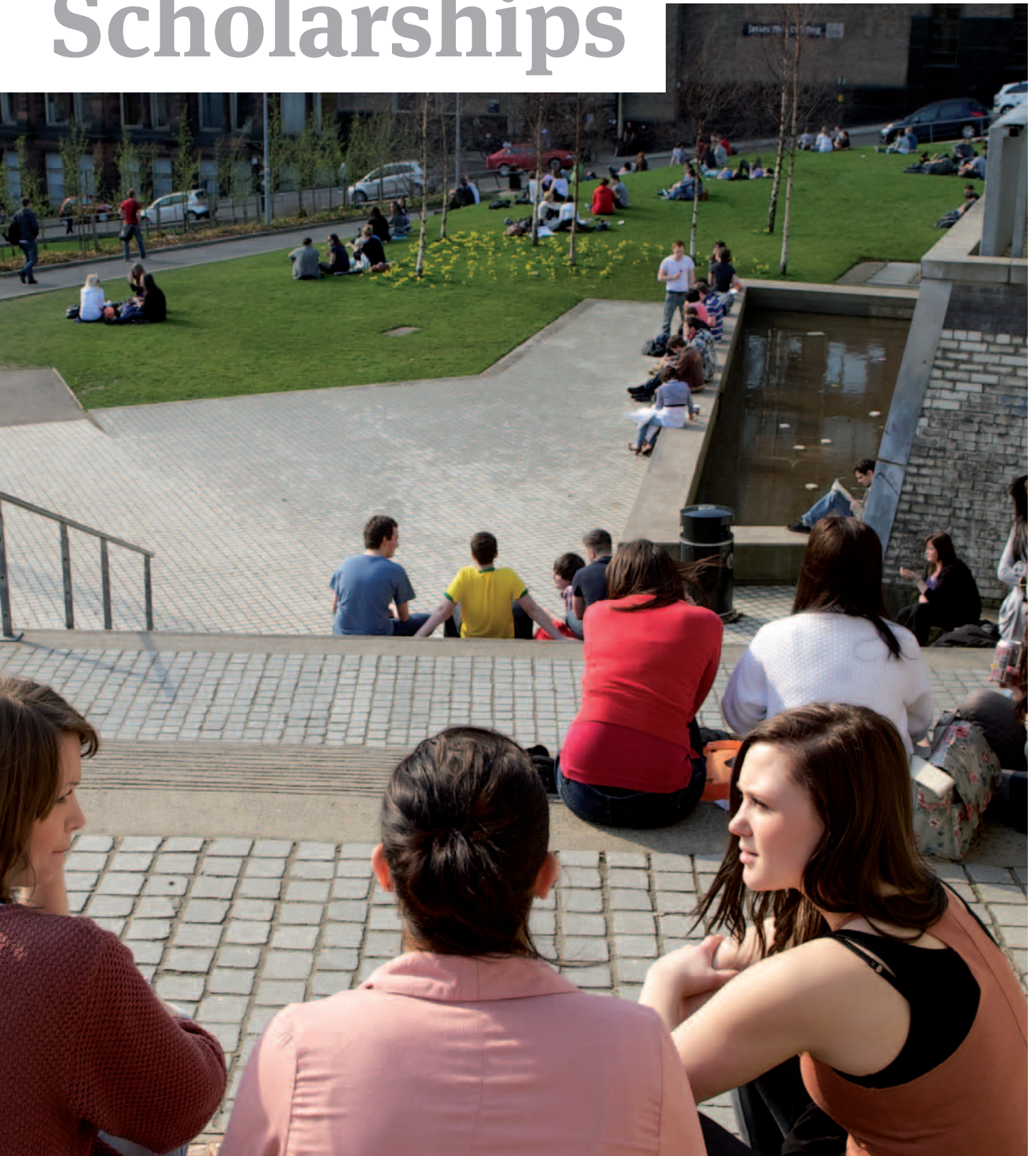


# Faculty of Engineering Scholarships







# Contents

The Faculty of Engineering provides a wide range of department and industry based scholarships that are available to many different groups of students looking to study at Strathclyde, or already studying in the Faculty.

Scholarships offer not only financial benefits but often lead to work experience, contact with industry and graduate interviews.

**03**

Introduction

**04**

University of Strathclyde

**06**

Scotland

**08**

Faculty of Engineering

**14**

Undergraduate Scholarships

**20**

Postgraduate Taught Scholarships

# Introduction

## Welcome from the Dean of Engineering



At Strathclyde University, enhancing the student experience resides at the heart of everything we do. The Faculty of Engineering has a strong and well established reputation for the quality of its educational programmes and for producing high-calibre graduates. This is something that we are very proud of and we try to go the extra mile to ensure that our students gain the most from their time at Strathclyde. We are committed to enhancing the student experience through research-informed teaching programmes, investing in excellent academic staff and teaching facilities and by implementing innovative approaches to our teaching.

The Faculty of Engineering at Strathclyde has one of the largest portfolios of scholarships of any Engineering Faculty in the UK. We offer scholarships to both our undergraduate and postgraduate students, for new students joining the Faculty and for continuing students. As well as helping students to get the best start to their education, scholarships can offer our students the opportunity to benefit from annual bursaries, a contribution towards fees, paid summer internships and, importantly, engagement with industry.

Strathclyde has been handpicked by some of the top companies to participate in their prestigious scholarship schemes and we are also able to offer a range of Departmental, Faculty and University funded scholarships. Students from several of our departments are able to apply for BP scholarships, worth up to £7,500 – which are only awarded to students at nine universities in the UK, with Strathclyde being the only Scottish member.

Equally we are very proud that we are the only university in Scotland to be included in the IET Power Academy scholarship programme, with our students having secured more scholarships than any other eligible UK university every year since its introduction in 2004. Other notable scholarships from our industry partners and professional societies include; Fundación IBERDROLA, American Bureau of Shipping, Atkins, the IMechE and many more.

We are continually striving to secure new scholarships for our students by liaising with our industry partners who are keen to support our students as they recognise the high standard of graduate we produce. One of the most recent scholarships that we have secured is from The Lloyds Register Educational Trust, who have awarded us £225,000 to provide scholarships for students. This funding will result in a £3,000 boost for 75 of our students over the next five years.

This publication highlights the scholarships that are currently on offer to our students but as we continue to work with industry, we anticipate securing a number of new scholarships from several high profile companies, as well as setting up more of our own scholarships, and so we can expect the number that we offer to grow each year.

The Faculty of Engineering wishes to thank all of our industrial partners who offer invaluable opportunities to our students, and who recognise the high calibre of our students. With their help, we will continue to enhance the student experience and produce highly sought after graduates that industry are keen to employ.

Professor Scott MacGregor  
Dean, Faculty of Engineering




# University of Strathclyde



If you are interested in sport there are around 40 teams and sports clubs you can choose from. In addition to our teams and clubs run by the Sports Union, our Centre for Sports and Recreation provides such facilities as a cardiovascular suite with over 70 exercise machines, a swimming pool, weight training area and fitness classes. Find out more at [www.strath.ac.uk/sport](http://www.strath.ac.uk/sport)








The newly refurbished University Library has around one million print volumes as well as access to over 144,000 electronic books and over 25,000 e-journals.



The University of Strathclyde is the third largest university in Scotland with more than 15,000 students from over 100 nations, attracted by our international academic reputation, vibrant teaching and learning environment, and strong engagement with business and industry. We combine established academic tradition with innovative teaching methodologies and pioneering research, to deliver a modern, exciting and globally relevant curriculum. Our ambition is to be among the leading technological universities in the world.

The Strathclyde campus is in a prime location in the heart of Glasgow and is five minutes from train, subway and bus stations, and a quick 20 minutes' shuttle to Glasgow Airport.

## Accommodation



The University has almost 2,000 student rooms offering a variety of reasonably priced self-catered flats in the city-centre Campus Village and nearby Merchant City. Nearly all the residences in the Campus Village are divided into flats of various sizes; where students have their own single rooms and share bathrooms and kitchen/living/dining areas with flat mates. Some of the accommodation have private bathroom facilities and all have TVs provided in the communal area. The Campus Village is predominantly undergraduate. Our residences are mainly mixed for both males and females with single sex flats. To find out if you are eligible to stay in university accommodation and for more information visit [www.strath.ac.uk/accommodation](http://www.strath.ac.uk/accommodation)

## The Student's Union

Whether you are looking for a great night out, or want to become involved in clubs, sports and volunteering opportunities, the Union is the place for you. Getting involved in activities at the Union is a great way to meet people and make new friends. The Union is the base for over 80 clubs and societies, catering to all tastes, and it is home to several bars, restaurants and services. For more information visit [www.strathstudents.com](http://www.strathstudents.com)

## Student Support

We offer a range of services, advice and assistance to help you make the most of your time at Strathclyde.

- The Advice Centre offers advice, guidance and information on all issues associated with student life to home and international students, especially those that concern welfare, academic, immigration and personal issues.
- Our Student Financial Support Team offer information and advice for students and applicants. We also offer advice to any students who encounter financial difficulties during their period of study.
- The Chaplaincy is open to everyone regardless of their faith.
- The Disability Service offers information, advice and assistance for applicants and students with disabilities.
- Student Counselling is a free and confidential service for students offering short-term individual counselling during term time.
- The Student Health Service helps students with physical or emotional health issues and provides advice on such matters as finding a doctor.
- The Careers Service can help with all aspects of your career choice and job search, whether you are looking for a part-time job, internship, work placement or want to start planning for your future career.



# Scotland

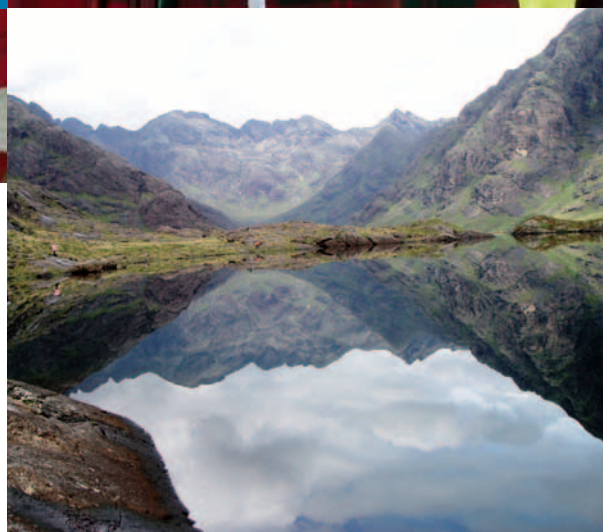
Scotland is located in the northern half of Great Britain and has a population of just over five million people. The capital city is Edinburgh, although Glasgow is the largest city.

Visitors from around the world come to Scotland every year to experience the unique culture, the outstanding scenery and to meet the friendly locals. The country is renowned for its breathtaking landscape, with magnificent mountain ranges and the highest mountain in Britain, Ben Nevis. There are in fact 283 'Munros', Scottish mountains over 3,000 feet, which are popular with hill walkers. One of the most popular ones is Ben Lomond which is located on the world famous beauty spot of Loch Lomond, only a 40 minute drive from Glasgow city centre.

The mountains are also popular for snow sports lovers, with Scotland boasting five high quality resorts, which will cater for beginners and more expert users for several months of the year.

Scotland is also hailed as the birth place of golf, boasting some of the most famous golf courses in the world. With over 550 golf courses to choose from, iconic courses such as Turnberry, Gleneagles and St Andrews continue to attract and amaze golf enthusiasts from all around the world.

There are a number of cities that really show off the history of the country, including the capital city Edinburgh, which is regarded as one of the most beautiful cities in Europe. It is home to a number of world famous events, such as the Edinburgh International Festival, the Edinburgh Fringe Festival - the world's largest arts festival, the famous Hogmanay street party and the Edinburgh Military Tattoo. The city is also the home to Edinburgh Castle, and a number of museums and galleries.



There are historical and cultural elements that can be rightly claimed to be unique to Scotland. One of the most common icons that is associated with Scotland is whisky. Acknowledged as Scotland's national drink, the whisky industry has grown to be one of the country's biggest exports. Other icons that are associated with Scotland are the musical instrument, the Bagpipes, and the tartan Kilt, a garment traditionally worn by men of the country.

Scotland is, of course, not all about history though, with it being home to a number of popular music festivals, including T in the Park and Rockness, which attract bands, artists and music lovers from all over the world.

One thing that is certain, Scotland can cater for everyone, and students will be spoiled for choice of what to do!





# Glasgow

The New York Times recently named the city as one of the top 12 places to see in the world 2012.

The University of Strathclyde sits in the heart of Glasgow, Scotland's largest and most cosmopolitan city. A major player in the energy, creative and electronics sectors, it is renowned for its striking architecture, trendy clubs, award winning restaurants, shopping and a diverse cultural scene.

The city offers the best retail experience in the UK outside of London, and with hundreds of shops to choose from, all just minutes from the Strathclyde campus, you will be spoiled for choice.

Named European City of the Year 2011, Glasgow has a year-long calendar of music and art festivals and internationally acclaimed museums and galleries. There are over 20 museums and galleries, including the recently opened Riverside Museum, which was one of the most visited museums in the UK in 2011. The city is also home to Scottish Opera, the BBC Scottish Symphony Opera and Scottish Ballet.

Dubbed 'Europe's Secret Capital of Music' by Time Magazine, Glasgow plays host to a range of International music events, including the MOBO awards, Celtic Connections and the World Pipe Band Championships. As a UNESCO City of Music, Glasgow also hosts over 130 concerts a week in a range of great venues such as the Barrowland Ballroom and the Scottish Exhibition and Conference Centre (SECC). Glasgow has become famous all over Europe for its excellent nightlife that offers venues and events to suit all ages and tastes with a huge variety of bars, pubs, clubs and nightclubs, that could keep you busy every night of the week.

The city buzzes with life, but visitors to Glasgow are often surprised at the amount of green space in the city centre. With 70 parks to explore there are plenty of opportunities to unwind, giving the perfect balance to the urban pace of life. Among the many parks, is Pollok Country Park, which holds the title of Best European Park.

Glasgow is Scotland's sporting city, and has been chosen to host the 2014 Commonwealth Games – a testament to Glasgow's excellent sporting facilities. The city has 23 pools and sports centres to choose from, including some of the newly built or recently refurbished Commonwealth Games venues.

Compact and easy to travel round, the city has excellent transport links to the rest of the UK, Europe and overseas, with London only an hour's flight away. It is just 40 minutes from Loch Lomond and 45 minutes by train to Edinburgh, meaning Glasgow is a prime location, no matter where you want to go.

Glasgow's diversity, friendliness, quality of life and reasonable cost of living make it a perfect location to live, work and study.





# The Faculty of Engineering

The Faculty of Engineering at Strathclyde is one of the largest, best equipped engineering faculties in the UK and the largest in Scotland. It is home to over 4,000 students from over 80 countries: 3,000 undergraduate, 650 postgraduate taught and over 500 postgraduate research.

The Faculty is recognised for producing high-calibre graduates and we are committed to enhancing the student experience through the development of research-informed education and through investment in teaching infrastructure, with significant investments being made in teaching facilities and world-class laboratories.

“

Success in my chosen career was influenced heavily by my place of study and being part of the largest Engineering Faculty in Scotland ensured that I was supported by the very best professionals in the field.”

**Mark Stevens**

MEng Civil and Environmental Engineering,  
Assistant Engineer, Scotland Territory  
Structures Assessments, Amey

We are renowned for our close links with industry, and our graduates are in demand world-wide with many employers visiting the University each year to recruit exclusively from our final year students. If you are serious about a career in engineering, then this is the place to be!

## Research

We are internationally recognised for our research and strong links with industry as evidenced by a growing research portfolio of over £85 million. Our research has a global impact, making a positive difference to the world we live in and helping to solve some of the major problems that face society today. The Faculty has a long history of innovation and is home to some of the most practical research taking place in the UK – from heart valves, to water and flood management to renewable technologies.

The Faculty is also leading the way in training the next generation of researchers through being the only Engineering Faculty in the UK to be engaged in eight multi-million pound EPSRC-funded Doctoral/Industrial Training Centres covering;

- Advanced Forming and Manufacture
- Medical Devices
- Nuclear Engineering
- Offshore Renewable Energy
- Optics and Photonics
- Systems Engineering
- Wind Energy
- Continuous Manufacture and Crystallisation

All of our undergraduate Engineering courses are fully accredited by the relevant professional Engineering institutions allowing graduates to become eligible for Chartered Engineer status. Many of our postgraduate degrees are also accredited.





Almost 90% of Strathclyde's UK Engineering graduates are in full-time jobs or study within six months of graduating.

### Employment Opportunities

With our strong links to business, the Faculty achieves a consistently high graduate employment rate. The reputation of engineering courses at Strathclyde, combined with the excellence of the University Careers Service, ensures you are well prepared for finding employment. Many employers target Strathclyde courses and, as a result, students often have jobs lined up before they graduate.

### Extensive Portfolio of Courses

The Faculty offers four-year BEng and BSc Honours degrees and five-year MEng and MSci degrees. MEng degrees are advanced degrees for well qualified students and provide an accelerated path to Chartered Engineer status. Our portfolio of postgraduate degrees is one of the largest in the UK.



Our undergraduate students benefit from our unique annual recruitment and networking dinner, 'Gala', which is attended by more than 45 graduate recruiting companies. Gala provides an opportunity for students and representatives from the engineering industry to network and it is unique within the UK.

### State-of-the-Art Facilities

From state-of-the-art design kit to supercomputers, Scotland's largest engineering faculty has invested significantly in outstanding teaching facilities and world-class laboratories that few universities can rival.

Each department has cutting-edge computer facilities and wireless networks enabling you to access your work when you need to. You will be trained in specialist software appropriate to your course.

### International Experience

Many of our undergraduate students take the opportunity to spend between three months and one academic year studying at a university abroad in such locations as Europe, Canada, Australia, or the USA. Study abroad allows you to match classes you would have undertaken at Strathclyde with classes on offer in our partner universities overseas. Employers tell us that international experience is a great way to stand out from the crowd when you are looking for that ideal job.

### Meet the Employers

At Strathclyde, all courses are closely linked with relevant industries. You have the chance to work on projects assigned by companies based on real situations. Lectures from employers explain the relevance of the subjects, and demonstrate the latest developments in industry. This close contact with industry ensures that our degrees are up-to-date and that Strathclyde graduates have the key skills that industry needs.

### Admissions Requirements

Entry to courses is competitive and requirements vary among courses. The current Undergraduate Prospectus and Postgraduate Prospectus give precise details for each course, these can be found at [www.strath.ac.uk/prospectus](http://www.strath.ac.uk/prospectus)





## Departments



### Architecture

Strathclyde's Department of Architecture is one of the largest departments in the UK and offers undergraduate and postgraduate programmes in Architecture that are accredited by the Royal Institute of British Architects and prescribed by the Architects Registration Board. Our MSc in Urban Design is also accredited by the Royal Town Planning Institute. The Department has built an educational culture rooted in formal experimentation, social engagement and technological innovation. Students are encouraged to think critically about how and why buildings and cities are produced and experienced and this commitment to developing the hungry imagination, to forging and discovering new ways of thinking about and making architecture is one of the reasons why we produce award-winning graduates that are highly valued by the profession.

[www.strath.ac.uk/architecture](http://www.strath.ac.uk/architecture)

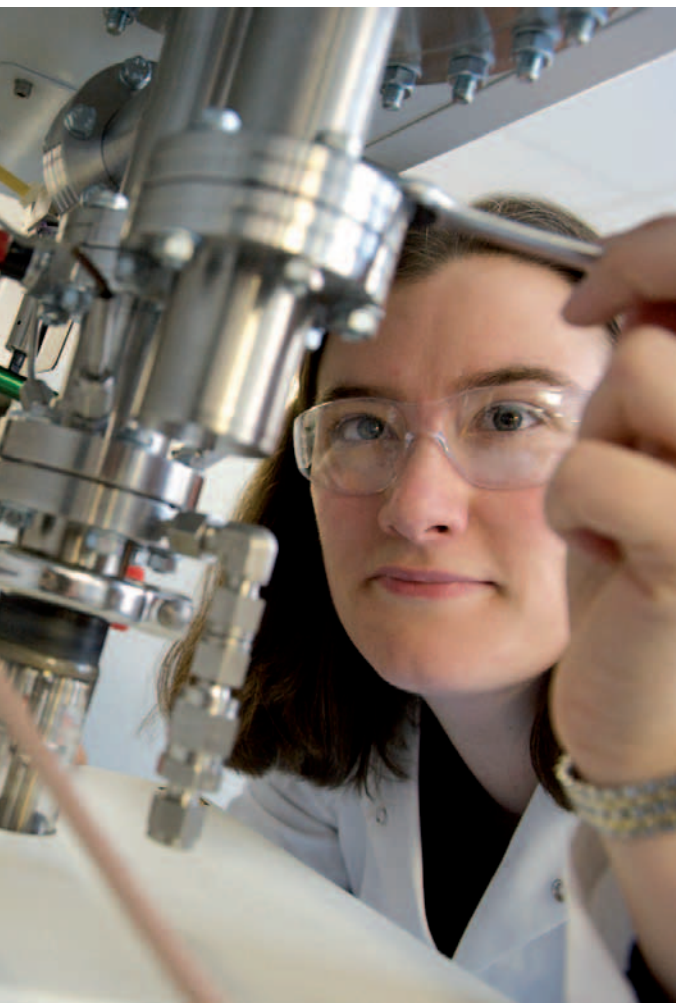
### Bioengineering \*

The Department of Bioengineering is an internationally-recognised centre of excellence for postgraduate education and research at the interface between engineering and the life sciences, with particular emphasis on clinically-related research. The goal of the Department is to transform and improve future healthcare through innovations and advances in science and technology. We offer prospective partners, students and visiting researchers a world-class environment that facilitates original thinking and delivers research which impacts on clinical care and quality of life. Bioengineering is one of Strathclyde's best performing research departments with the highest percentage of research-active staff rated at 4\* and 3\* within the Faculty of Engineering. Areas of Research include Rehabilitation Engineering, Cell, Tissue and Organ Engineering and Medical Devices.

[www.strath.ac.uk/bioeng](http://www.strath.ac.uk/bioeng)







### Chemical Engineering

Strathclyde's Department of Chemical and Process Engineering is one of the largest in the country, offering innovative courses delivered by highly qualified staff with a dynamic, progressive approach and many years of practical experience in important areas. We are industry-orientated with strong links worldwide to major chemical engineering employers, particularly those involved in our unique Chemical Engineering by distance learning programmes. All of our

BEng, MEng and MSc courses are fully accredited by the Institution of Chemical Engineers.

[www.strath.ac.uk/chemeng](http://www.strath.ac.uk/chemeng)



### Civil and Environmental Engineering

The Department of Civil and Environmental Engineering has a unique combination of multidisciplinary expertise, reflected in its portfolio of professionally accredited courses, dynamic PhD programmes and internationally renowned research. Our courses encompass the principal aspects of the theory and practice of Civil and Environmental Engineering. They are accredited by the Institution of Civil Engineers, the Institution of Structural Engineers and the Chartered Institution of Highways and Transportation. 60% of our research outputs are ranked as "world-leading or internationally excellent" by the UK Government. Our Infrastructure and Environment groups lead research through coordinating major European and EPSRC-funded consortia, and supply support to UNIDO and UNEP regarding global treaties for organic pollutants and mercury. Research and teaching is facilitated by state-of-the-art Environmental Chemistry, Microbiology and Geomechanics laboratories.

[www.strath.ac.uk/civeng](http://www.strath.ac.uk/civeng)

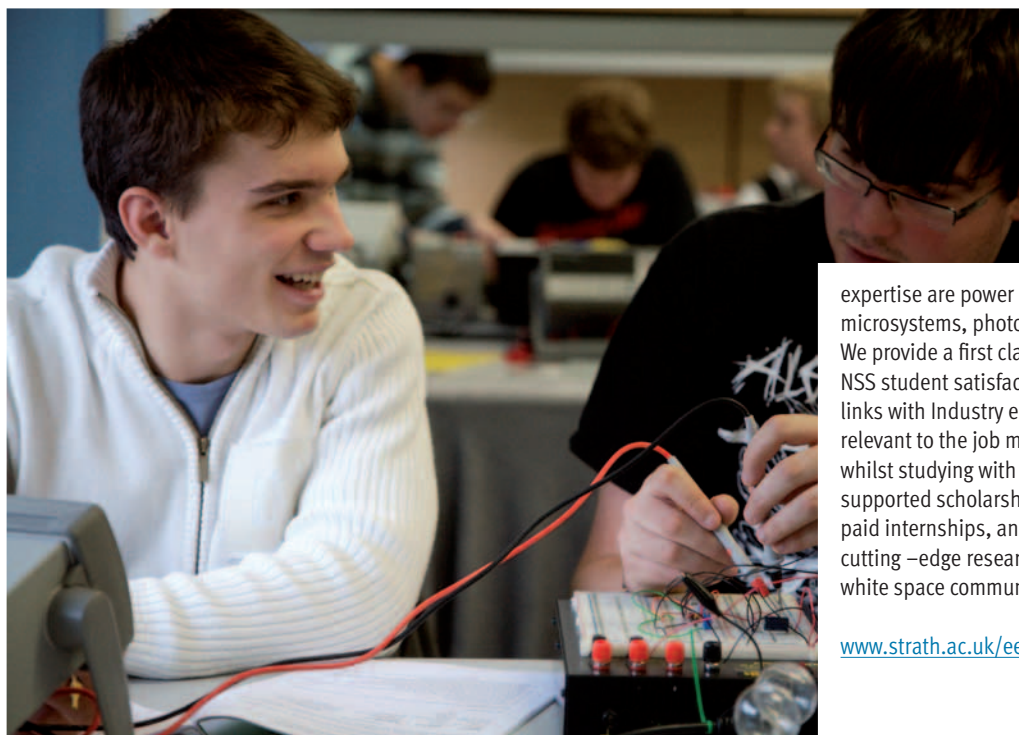




## Design, Manufacture and Engineering Management

The Department of Design, Manufacture and Engineering Management (DMEM) is one of the UK's leading Industrial Engineering departments and offers a range of interdisciplinary degree programmes that combine art and design, technology and business. We are an energetic and innovative department, whose aim is to deliver broad-based education and research of relevance to meet industrial and commercial needs. All of our courses are fully accredited by one or more of the UK's engineering institutions; Institution of Mechanical Engineers (IMechE), Institution of Engineering Designers (IED) and the Institution of Engineering and Technology (IET). Our fields of expertise range from creative and engineering design, through manufacturing and supply to the management of the entire value chain. The Department hosts the Advanced Forming Research Centre (AFRC), a world class research facility supporting fundamental and applied research in forming and forging; DMEM also coordinates the Strathclyde Institute for Operations Management (SIOM), which incorporates a community of 40+ researchers across the University's Business, Engineering and Social Sciences faculties.

[www.strath.ac.uk/dmem](http://www.strath.ac.uk/dmem)



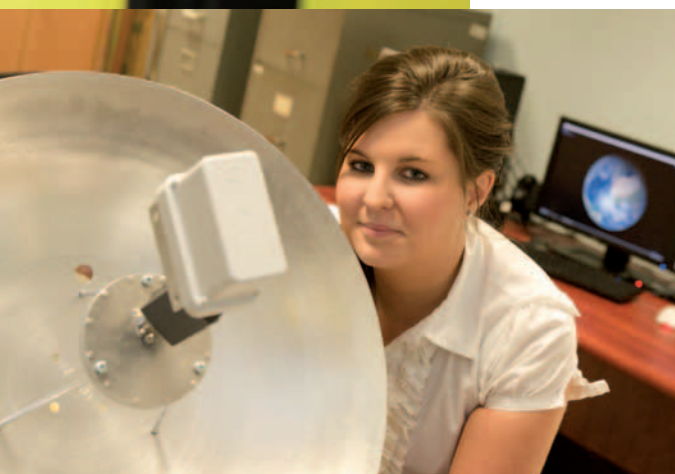
## Electronic and Electrical Engineering

The Department of Electronic and Electrical Engineering has an international reputation for its teaching, research and knowledge exchange activities and is consistently rated in the top 10 such departments in the UK. Research-led, our fields of

expertise are power engineering and renewable energy, ultrasonics, microsystems, photonics, communications and control systems. We provide a first class education as evidenced by our excellent NSS student satisfaction and graduate employment rates. Strong links with Industry ensure our professionally-accredited courses are relevant to the job market and give you direct contact to employers whilst studying with us. We have one of the UK's largest employer-supported scholarship programmes, providing annual bursaries and paid internships, and house many world-class facilities supporting cutting-edge research in areas including smart grid technologies, white space communications and renewable energy.

[www.strath.ac.uk/eee](http://www.strath.ac.uk/eee)





## Naval Architecture and Marine Engineering

With an illustrious history going back to 1882, the Department of Naval Architecture and Marine Engineering is a key provider of marine technology expertise in the UK and beyond. Our degree courses are accredited by the Royal Institution of Naval Architects (RINA) and the Institute of Marine Engineering, Science and Technology (IMarEST). Ideally located in Glasgow, we continue to build on the city's rich heritage of naval architecture and shipbuilding, making significant contributions to National and International policy-making and the advancement of the Marine Technology

field. Many of our graduates are involved in management and commerce. Increasingly, our graduates also play leading roles in the engineering of offshore renewable energy sources, including offshore wind, wave and tidal power. The Department houses the largest ship-model experiment wave/towing tank in any UK university – Kelvin Hydrodynamics Laboratory, where the majority of experimental work is carried out.

[www.strath.ac.uk/na-me](http://www.strath.ac.uk/na-me)

## National Centre for Prosthetics and Orthotics \*

The National Centre for Prosthetics and Orthotics is one of only two institutions in the UK offering undergraduate and postgraduate education in Prosthetics and Orthotics, and is the only institution in the world to offer the five-year programme to MSci level. The Centre consists of a custom built premises which includes clinical examination and treatment areas, technical workshops, and gait assessment resources. A continuing responsibility of the National Centre is to maintain an awareness of world-wide clinical education, research and development in its field. The Centre's primary purpose is to provide high quality education at both undergraduate and postgraduate levels to health care professionals and students of the rehabilitation professions.

[www.strath.ac.uk/prosthetics](http://www.strath.ac.uk/prosthetics)

## Mechanical and Aerospace Engineering

The Department of Mechanical and Aerospace Engineering has an educational foundation stretching back to the 1800s and today is one of the largest departments of its kind in the UK. We boast the highest independently assessed standing in our discipline in Scotland and, according to independently published league tables, we are consistently ranked alongside the premier engineering departments in the UK.

Our undergraduate and postgraduate courses are professionally accredited by the Institution of Mechanical Engineers, the Royal Aeronautical Society, and the Energy Institute. Our strong links with industry ensure that our teaching programmes are relevant to employers' needs and that our research remains at the forefront of addressing global engineering challenges and societal needs.

The Department houses a number of research centres including the internationally-renowned Advanced Space Concepts Laboratory (ASCL) which supports cutting edge research in space engineering.

[www.strath.ac.uk/mae](http://www.strath.ac.uk/mae)



\* As of August 2012 the Department of Bioengineering and the National Centre for Prosthetics and Orthotics will merge to form the new Department of Biomedical Engineering.



# Undergraduate Scholarships

The Faculty of Engineering provides a wide range of department and industry based scholarships that are available to many different groups of students looking to study at Strathclyde, or already studying in the Faculty.

Scholarships offer not only a financial incentive but often lead to work experience, contact with industry and graduate interviews.

As an undergraduate student, scholarships can help you during your time at university and with your future career in a number of different ways; including providing you with annual bursaries to help with your studies, as well as help with buying books and software and even with paid internships and possible graduate recruitment opportunities.

Scholarships can come from a variety of different sources, including University, Faculty and departmental funded scholarships, scholarships sponsored by industrial partners and also scholarships provided by prestigious professional bodies.

Some of our undergraduate scholarships are detailed on the next few pages. As well as the scholarships listed in this booklet, there are other bursaries and prizes awarded to students through departments, the Faculty and the University which may vary year on year. More details on these can be found in the University Calendar ([www.strath.ac.uk/gpes/gmpt/qualityenhancement/universityregulations/](http://www.strath.ac.uk/gpes/gmpt/qualityenhancement/universityregulations/)) or by speaking to your Department.

“

I was awarded the BP Scholarship for Academic Merit following my second year at Strathclyde. The main benefit I have found from this has been the opportunity to take part in workshops that BP run on campus for its scholars from all engineering disciplines. These include information sessions on graduate and summer opportunities and the chance to meet and speak to current employees within BP. It has also helped to finance my studies, including my summer work placement in Holland.”

**Rachel Milne**

MEng Chemical Engineering





## Multi-Departmental Industrial Scholarships



### BP Scholarships \*

BP is one of the largest producers of oil and gas in the world. They employ almost 80,000 people across six continents and own multiple refineries and petrochemical plants around the globe, a fleet of 80 ships and tens of thousands of miles of pipeline.

Only nine UK universities are included in the BP Scholarship Programme and Strathclyde is the only Scottish member. The aim of BP scholarships is to recognise, reward and support academic excellence and support the potential for future achievement.

#### Who is eligible?

All second and third year students studying for an MEng in the Departments of;

- Chemical and Process Engineering
- Electronic and Electrical Engineering
- Mechanical and Aerospace Engineering
- Naval Architecture and Marine Engineering

#### What is the value?

Successful students will receive £1,500 each.

#### How many are available?

There are usually up to 25 BP Scholarship Awards available each year, with varying numbers awarded in each of the departments.

#### How can you apply?

Students do not need to apply for these awards; they are allocated by Department's based on the academic performance of students.

### The Lloyd's Register Educational Trust Merit Scholarships \*

The Lloyd's Register Educational Trust (LRET) is an independent charity operating throughout the world. It aims to fund advances in transportation, science, engineering and technology education, training and research worldwide for the benefit of all.

The Faculty of Engineering has been awarded £225,000 by The LRET to provide scholarships for undergraduate and postgraduate students. The funding support will provide a £3,000 boost for 60 undergraduate students over a five-year period.

#### Who is eligible?

The scholarships will be available to all continuing undergraduate students about to embark on their second, third, fourth or fifth year of study in the following Departments;

- Naval Architecture and Marine Engineering
- Electronic and Electrical Engineering
- Mechanical and Aerospace Engineering

#### What is the value?

A £3,000 scholarship for one year to contribute towards fees and/or a stipend.

#### How many are awarded each year?

Twelve awards are made each year, to three students at the end of each year of study (first to fourth year).

#### How do you apply?

When the time comes to apply, students will be informed by their Department and given the opportunity to submit an application to the scholarship panel who will select the successful students. Students in receipt of other scholarships will not be eligible to apply.



# Multi-Departmental Industry Scholarships

## Architecture Specific Scholarships The Royal Institute of British Architects

The Royal Institute of British Architects (RIBA) offer a range of prizes, scholarships and bursaries designed to support and reward students, graduates, academics and practitioners studying architecture at university.

These schemes are designed to support the work of the RIBA in promoting educational standards and encouraging students, academics and practitioners to exceed them.

For more information on the different funding that may be available to you from the RIBA visit [www.architecture.com/EducationAndCareers/PrizesScholarshipsandBursaries](http://www.architecture.com/EducationAndCareers/PrizesScholarshipsandBursaries)

## Chemical and Process Engineering Specific Scholarships Atkins Scholarship \*

### Who is eligible?

Students studying MEng Chemical and Process Engineering. Students will receive the first instalment in their third year of study.

### What is the value?

£2,000 each year for three years.

**How many are awarded each year?** One new scholarship will be awarded each year, so there will always be three students at any one time receiving the scholarship, one in third year, one in fourth year and one in fifth year.

### How do you apply?

When the time comes to apply, students will be informed by the Department and given the opportunity to submit an application. A selection of students will then be interviewed by Atkins who will select the successful candidate.

## Civil and Environmental Engineering Specific Scholarships Institution of Civil Engineers QUEST Scholarships \*

The Institution of Civil Engineers (ICE) is a registered charity that strives to promote and progress civil engineering. They believe that civil engineers are “at the heart of society, delivering sustainable development through knowledge, skills and professional expertise.”

The ICE QUEST scholarships have supported hundreds of civil engineering students, many of which are now working in the industry. At present there are over 250 QUEST scholars studying throughout the UK and the scholarship is supported by such companies as; Balfour Beattie, BAM Nuttall, Mott MacDonald and Network Rail.

### Who is eligible?

Applicants who hold a conditional or unconditional offer for the first year of an undergraduate ICE accredited degree can apply. Please visit the Department of Civil and Environmental Engineering's website for a list of accredited courses [www.strath.ac.uk/civeng/ug/](http://www.strath.ac.uk/civeng/ug/)

### What is the value?

Successful applicants are sponsored by a civil engineering or construction company for the duration of their studies. Companies arrange work experience placements every year during the summer holidays and offer professional training and guidance. Successful applicants also receive financial support of up to £2,500 for each year of their undergraduate studies.

### How many are available?

The number available each year varies and students will be competing with those from other institutions.

### How do you apply?

Applicants are required to submit an application form, along with a reference from your school or college, to the ICE. More information on how to apply, including where to download application and reference forms, and the deadline for submissions can be found at the following link: [www.ice.org.uk/Membership/Scholarship-and-Awards/QUEST-Awards/Undergraduate-Scholarship](http://www.ice.org.uk/Membership/Scholarship-and-Awards/QUEST-Awards/Undergraduate-Scholarship)

“

Receiving the Atkins scholarship has been very beneficial to me and my studies. The financial support provided by the scholarship gave me the ability to focus on my studies as I no longer needed to work. The interview experience and industrial contacts I have gained have been extremely useful and also the scholarship looks excellent on my CV.”

**Catherine Tait**  
MEng Chemical Engineering

\* Numbers of scholarships are limited and are therefore not guaranteed. Number available and value are subject to change without notice, and scholarships may be withdrawn at any time.



## Department of Electronic and Electrical Engineering Specific Scholarships

The Department of Electronic and Electrical Engineering (EEE) offers one of the most extensive Departmental Scholarship Programmes in the UK. Over 200 students currently benefit from this programme, receiving annual bursaries, help with buying books and software, and paid summer internships giving them relevant work experience and that all-important advantage in today's competitive job market.

### IET Power Academy \*

The Institution of Engineering and Technology (IET) is one of the world's leading professional societies for the engineering and technology community.

The IET Power Academy brings together seven leading UK universities and 14 key power sector organisations, including E.ON and Siemens, to develop an engineering scholarship fund to provide students with support and finance throughout their university course.

As the only Department in Scotland to be included in the prestigious IET Power Academy we are very proud that, since its introduction in 2004, EEE students have secured more scholarships than any of the other eligible UK universities.

#### Who is eligible?

All EEE undergraduate students are eligible to apply.

#### What is the value?

The scholarship provides a £2,200 bursary for each year of study, a contribution towards tuition fees, books and software, and a 10-week paid summer placement with the sponsoring company. It also puts students in contact with industry mentors through a series of local and national networking events.

#### How do you apply?

Details on how to apply are provided at a briefing session held in the University by the Department of EEE in October. Applicants may be required to attend an assessment centre and interview. For more information visit [www.theiet.org/poweracademy](http://www.theiet.org/poweracademy)

### FM Bruce Scholarship \*

Aiming to foster the next generation of world class engineers, this scholarship was endowed in honour of a distinguished former Head of Department and Professor of Power Engineering.

#### Who is eligible?

Open to all well-qualified first year students joining any of the Department's undergraduate programmes.

#### What is the value?

A bursary of £500 for tuition fees or course expenses is provided.

#### How do you apply?

Students will be advised by the Department at the start of semester one of the application process.

### The Royal College Prestigious Awards \*

In the Department we have a large and varied cultural base and have had recipients of this award from many nations including China, Nigeria, India and Malaysia.

#### Who is eligible?

Open to all well-qualified overseas applicants joining any of the Department's undergraduate programmes.

#### What is the value?

A bursary of up to £3,000 for tuition fees.

#### How do you apply?

Online submissions must be made by 30 June each year. Application forms are available at [www.strath.ac.uk/eee/scholarshipsandfunding](http://www.strath.ac.uk/eee/scholarshipsandfunding) Selection is based on academic merit.

### S6 Bursaries \*

Some students who are issued an unconditional offer in their fifth year at school may not feel ready to begin University, and will choose to stay on for their sixth year.

To encourage commitment to continued high standards in S6, the Department offers a one-off bursary award of £250 to unconditional offer holders who achieve results in S6 comparable with their performance in S5.

This will automatically be paid to students and does not require an application. The bursary will be paid in the October following registration. This bursary is available to Scottish students only.

“

I was awarded an IET Power Academy Scholarship in my first year. As well as the bursary, working with my sponsor, National Grid gave me the opportunity to apply my learning to real engineering challenges. I've also had the unique chance of developing my skills in a professional environment through my three summer placements with the company at their offices in Warwick, Reading and Staffordshire.”

**Eilidh Malcolm**  
MEng in Electronic and Electrical Engineering

# Department of Naval Architecture and Marine Engineering Scholarships

There are several organisations offering undergraduate sponsorships and scholarships to students in the Department of Naval Architecture and Marine Engineering (NAME) each year, including BP, IMarEST and the American Bureau of Shipping. New arrangements for scholarships and summer work are continually added and can be found on the Department website.

“

I obtained the entrance bursary from the Department of NAME when I came from Singapore to study at Strathclyde. The scholarship benefitted me by helping to ease the financial burden of paying for accommodation and other living expenses.”

Zane Tan, MEng in Naval Architecture



## NAME Entrance Bursaries \*

### Who is eligible?

All students applying to study in the Department.

### What is the value?

£1,000 is awarded to successful students.

### How many are available?

Up to 10 bursaries are available each year.

### How do you apply?

Applicants to the course do not need to apply, but the entrance bursary will be awarded to students with excellent entrance qualifications.

## NAME Overseas Excellence Scholarships \*

### Who is eligible?

Overseas applicants to full-time undergraduate courses in the Department.

### What is the value?

£2,500 is awarded to successful students.

### How many are available?

Up to five awards are available each year.

### How do you apply?

Applicants can apply online at [www.strath.ac.uk/na-me/undergraduatelstudies/scholarshipssponsorships/](http://www.strath.ac.uk/na-me/undergraduatelstudies/scholarshipssponsorships/)

## American Bureau of Shipping Scholarship Programme \*

### Who is eligible?

Current students about to commence fourth or fifth year in the Department of NAME.

### What is the value?

A considerable bursary will be available; the amount will vary each year.

### How many are available?

Two are available each year.

### How do you apply?

When the time comes to apply, students will be informed by the Department and given the opportunity to submit an application to the Department who will select the successful students.

## John Houlder/Hadley Shipping Co Ltd Awards \*

### Who is eligible?

Current students from the Department of NAME who are facing financial hardship.

### What is the value?

£2,500 is awarded to successful students.

### How many are available?

Up to three awards are available each year.

### How do you apply?

Applicants should contact their year advisor if they are interested in applying.

## John Blackburn Main Scholarship \*

Through the generosity of the family of Mr John Blackburn Main, the Institute of Marine Engineering, Science and Technology (IMarEST) has set up a fund to support students from the Department to gain work experience overseas, preferably in a shipyard or related environment in the Far East.

### Who is eligible?

Current students in third or fourth year who are spending between one month and three months in a different country to help with their project work. There is a preference for students to go to shipyards in the Far East, although it is not necessary. At the end of the placement, each scholarship holder is required to submit a technical report.

### What is the value?

Up to £3,000 is awarded to cover expenses such as travel, accommodation, insurance and day-to-day living.

### How many are available?

Up to four awards are available each year.

### How do you apply?

If you would like to learn more or to apply contact Dr Phil G Sayer [p.g.sayer@strath.ac.uk](mailto:p.g.sayer@strath.ac.uk)

\* Numbers of scholarships are limited and are therefore not guaranteed. Number available and value are subject to change without notice, and scholarships may be withdrawn at any time.



## Department of Mechanical and Aerospace Engineering Specific Scholarships

There are a number of scholarships available to students within the Department of Mechanical and Aerospace Engineering, including awards from the Institution of Mechanical Engineers.

### Sir William Arrol Bursary \*

#### Who is eligible?

All UK first year students in the Department of Mechanical and Aerospace Engineering can apply.

#### What is the value?

£1,000 is awarded to successful students for each year of their studies (up to £5,000 if studying a five-year MEng degree).

#### How many are available?

One is awarded each year, so up to five students will be in receipt of the bursary at any one time.

#### How do you apply?

First year students are invited to apply in their first semester by submitting an application form, available from the Department.

### IMechE Undergraduate Scholarships \*

The Institution of Mechanical Engineers is the fastest growing professional engineering institution in the UK. It has 100,000 members working at the heart of the country's most important and dynamic industries. The Institution believe they can improve the world through engineering so they help find and nurture new talent, helping engineers build their careers and take on the challenges that, when solved, will make a difference to all of us.

#### Who is eligible?

Home applicants wishing to study Mechanical and Aerospace Engineering.

#### What is the value?

The scholarships are valued at £4,000 (normally £1,000 per annum over four years).

#### How many are available?

The number varies from year to year and applicants will be competing with those from other institutions.

#### How do you apply?

Further details can be obtained by emailing [awards@imeche.org](mailto:awards@imeche.org), where application forms can also be obtained. Shortlisted candidates will be required to attend an interview.

### Whitworth Scholarships \*

A number of scholarships are available to support engineering apprentices who have recently served at least a two-year engineering apprenticeship who wish to further their careers by undertaking an engineering degree level programme.

#### Who is eligible?

Applicants wishing to study Mechanical and Aerospace Engineering that have recently completed a two-year apprenticeship. Applicants must be a British, Commonwealth or European citizen and normally reside in the UK and have lived in the UK for at least three years.

#### What is the value?

£5,000 per year for up to four years.

#### How many are available?

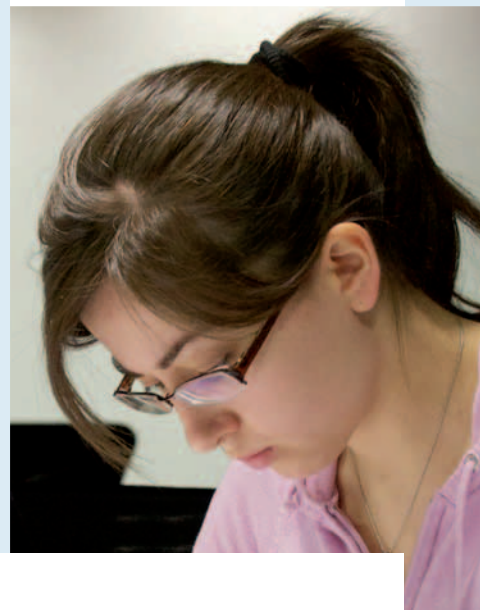
The number varies from year to year and applicants will be competing with those from other institutions.

#### How do you apply?

For more information and to obtain an application form visit [www.whitworthscholarships.org.uk](http://www.whitworthscholarships.org.uk)

### RUK Scholarships

Due to the changes in funding arrangements for RUK students, scholarship and bursary initiatives aimed at RUK students will be developed and introduced in time. For more information on scholarships and bursaries available to RUK students contact individual departments.



### Other Undergraduate Scholarships

There are a wide number of other undergraduate scholarships available to students studying within the Faculty of Engineering.

As well as Faculty, Department and Industry scholarships, there are a number of University wide scholarships that Engineering applicants and students can apply for, competing with students from other Faculties within the University. Details of these can be obtained from [www.strath.ac.uk/search/scholarships/index.jsp](http://www.strath.ac.uk/search/scholarships/index.jsp)

Many other companies and societies also provide UK wide scholarships that Strathclyde Engineering students are able to apply for. For more information about scholarships that you may be eligible for that are not listed in this booklet, please contact your individual Department or the Recruitment and International Office for more information.



# Postgraduate Taught Scholarships

There are a number of scholarships available to UK, EU and Overseas postgraduate students.

Scholarships can help students in a number of ways, such as payment towards fees, materials and to provide monthly living allowances. There are many funding opportunities available through individual departments or tied to specific courses and made available from industry sponsors or partners, research councils, etc. Some of the scholarships available to postgraduate taught students in the Faculty are listed here, for more information check with the department in which you are, or will be studying.

“

I received an International Excellence Award which, as an international student, was really a helping hand for me. The money awarded was a huge amount for me in terms of my home currency. With this money, I was able to buy some books for my studies.”

**Lijo Varughese Chacko**  
**MSc Bioengineering**





## Fundación IBERDROLA Scholarships \*



The Fundación IBERDROLA, the charitable arm of ScottishPower's parent company, IBERDROLA, offers scholarships for Masters Studies in Energy and Environment in the United Kingdom.

The Fundación established these scholarships, available for postgraduate studies, to contribute to excellence in training and research in the fields of energy and the environment, two of the most sought-after professions.

The University of Strathclyde is one of only four universities currently selected to partner the Fundación on this programme in the UK.

### Who is eligible?

The scholarships are open to UK, US and Spanish students only. The scholarships are specifically available for one-year MSc courses in the following areas;

- Renewable energy
- Sustainable energy systems
- Environment and biodiversity
- Clean coal technologies, emissions management
- Energy efficiency
- Energy storage
- Electric vehicles
- Smart grids

### What is the value?

The scholarship meets full enrolment costs and provides a generous monthly living allowance.

### How do you apply?

Applicants must firstly have an offer from an eligible MSc course then they can apply online at [www.scottishpower.com/scholarships](http://www.scottishpower.com/scholarships) Selection is by application and interview. For more information contact your individual Department.

## BP Scholarships \*



BP is committed to supporting the future talent for the marine and offshore industries and recently established a Scholarship Programme offering great opportunities for postgraduate students within the Department of Naval Architecture and Marine Engineering (NAME).

Only nine UK universities are included in the new Scholarship Programme and Strathclyde is the only Scottish member.

### Who is eligible?

MSc students within the Department of NAME.

### What is the value?

Successful students will receive £7,500 each.

### How many are available?

Up to four scholarships are awarded each year, although the number may vary.

### How do you apply?

Students do not need to apply as the scholarships are awarded on a performance basis. For more information contact the Department of NAME.

## International Excellence Awards \*

### Who is eligible?

Open to well-qualified full-time overseas students joining a wide selection of one-year MSc or MRes programmes in the following Departments;

- Bioengineering
- Civil and Environmental Engineering
- Design, Manufacture and Engineering Management
- Electronic and Electrical Engineering

For exact information on what courses are included, contact the relevant Department. Candidates must register for the programme prior to any awards being allocated.

### What is the value?

Up to £3,000 for tuition fees or course expenses, the amount available varies for each Department.

### How many are available?

Numbers available vary depending on each Department.

### How do you apply?

Candidates can apply for the award through individual departments. Application forms can be obtained directly from the Department or on Departmental websites. Selection is based on academic merit and personal achievements.

### The Lloyd's Register Educational Trust Merit Scholarships \*

The Lloyd's Register Educational Trust (LRET) is an independent charity operating throughout the world. It aims to fund advances in transportation, science, engineering and technology education, training and research worldwide for the benefit of all.

The Faculty of Engineering has been awarded £225,000 by The LRET to provide scholarships for undergraduate and postgraduate students. The funding support will provide a £3,000 boost for 15 MSc students over a five-year period.

#### Who is eligible?

The scholarships will be available to all current MSc students in the following Departments;

- Naval Architecture and Marine Engineering
- Electronic and Electrical Engineering
- Mechanical and Aerospace Engineering

#### What is the value?

A £3,000 stipend will be awarded to successful candidates.

#### How many are awarded each year?

Three awards are made each year.

#### How do you apply?

When the time comes to apply, students will be informed by their Department and given the opportunity to submit an application to the scholarship panel who will select the successful students. Students in receipt of other scholarships will not be eligible to apply.

### Bioengineering China - Scotland Friendship Award \*

#### Who is eligible?

Applicants from China applying to the MSc Biomedical and MRes courses in the Department of Bioengineering.

#### What is the value?

£2,000 awarded towards tuition fees.

#### How many are available?

One is available each year.

#### How do you apply?

Awarded to students on a performance basis, no need to apply.

### Faculty Excellence Awards for India \*

#### Who is eligible?

All well-qualified applicants from India joining any of the one-year full-time postgraduate MSc programmes in the Departments of;

- Civil and Environmental Engineering
- Mechanical and Aerospace Engineering

#### What is the value?

Up to £4,000 is awarded to successful candidates.

#### How do you apply?

Applicants must firstly have an offer for an MSc programme in an eligible Department. They can then apply by submitting an application form which can be downloaded from [www.strath.ac.uk/engineering/scholarships/postgraduate/taughtscholarships/](http://www.strath.ac.uk/engineering/scholarships/postgraduate/taughtscholarships/)

\* Numbers of scholarships are limited and are therefore not guaranteed. Number available and value are subject to change without notice, and scholarships may be withdrawn at any time.

### John Blackburn Main Scholarship \*

Through the generosity of the family of Mr John Blackburn Main, the Institute of Marine Engineering, Science and Technology (IMarEST) has set up a fund to support students from the Department of Naval Architecture and Marine Engineering (NAME) to gain work experience overseas, preferably in a shipyard or related environment in the Far East.

#### Who is eligible?

Students studying any MSc course in the Department of NAME who are spending between one month and three months in a different country to help with their project work. There is a preference for students to go to shipyards in the Far East, although it is not necessary. At the end of the placement, each scholarship holder is required to submit a technical report.

#### What is the value?

Up to £3,000 is awarded to cover expenses such as travel, accommodation, insurance and day-to-day living. In addition, the postgraduate scholarship supports attendance at a conference relevant to the scholar's studies, up to a maximum of £2,000.

#### How many are available?

One postgraduate scholarship is available each year.

#### How do you apply?

If you would like to learn more or to apply contact Dr Phil G Sayer [p.g.sayer@strath.ac.uk](mailto:p.g.sayer@strath.ac.uk)

## Other Postgraduate Scholarships

A number of other scholarships are available to both postgraduate taught and research students studying within the Faculty of Engineering. This booklet mainly highlights scholarships available to postgraduate taught students, however, a wide range of scholarships and studentships are also available to postgraduate research students

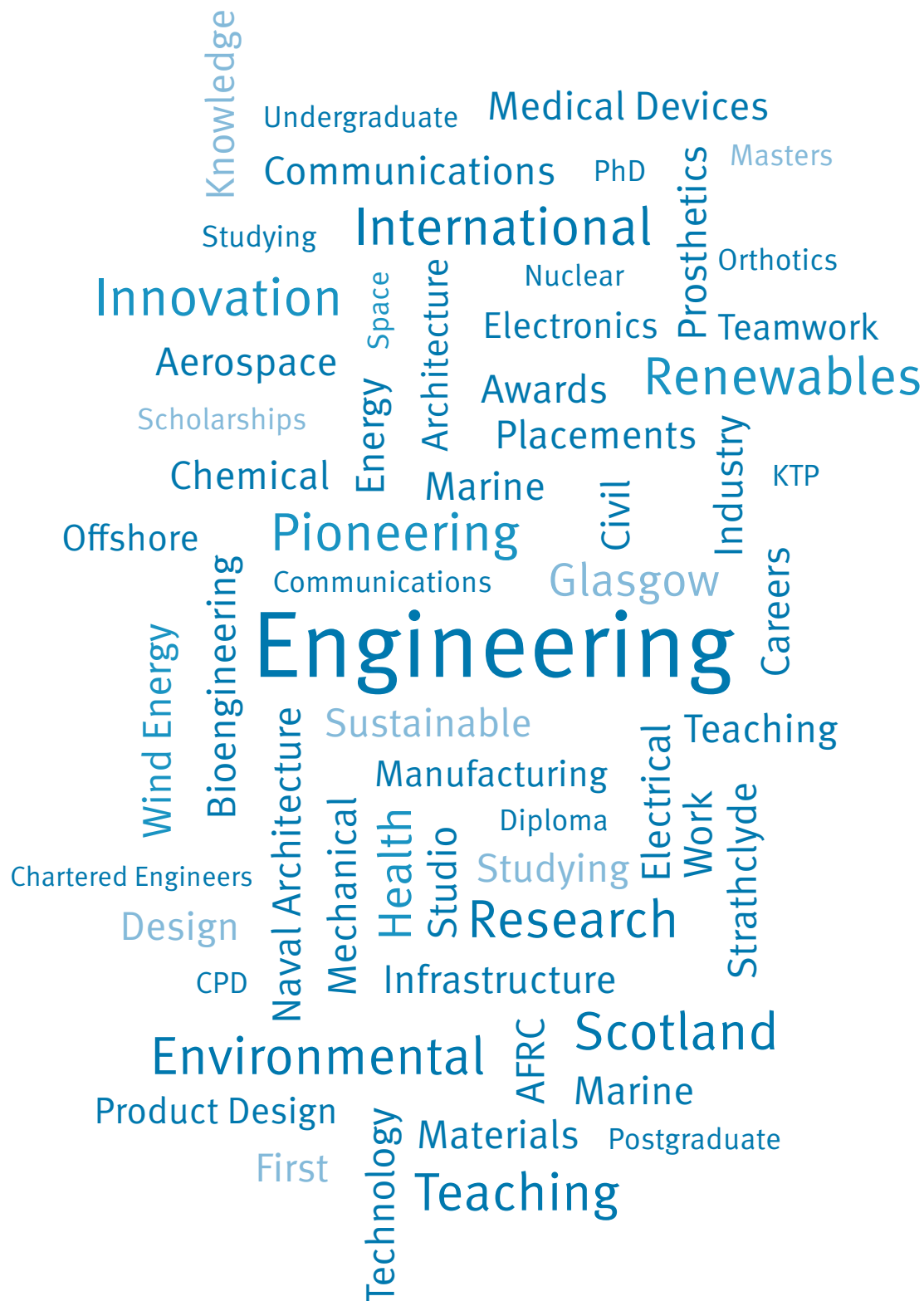
Details of University wide scholarships can be obtained from [www.strath.ac.uk/search/scholarships/index.jsp](http://www.strath.ac.uk/search/scholarships/index.jsp)

For more information about scholarships that you may be eligible for that are not listed in this booklet, please contact your individual Department or the Recruitment and International Office.

## RUK Scholarships

Due to the changes in funding arrangements for RUK students, scholarship and bursary initiatives aimed at RUK students will be developed and introduced in time. For more information on scholarships and bursaries available to RUK students contact individual departments.





Faculty of Engineering  
University of Strathclyde  
Room 5.25  
Royal College Building  
204 George Street  
Glasgow G1 1XW

t: +44 (0)141 548 2749  
e: [contact-facultyofengineering@strath.ac.uk](mailto:contact-facultyofengineering@strath.ac.uk)  
w: [www.strath.ac.uk/engineering](http://www.strath.ac.uk/engineering)  
twitter: @StrathEng

Recruitment & International Office  
Level 4, Graham Hills Building  
50 George Street  
Glasgow G1 1XP

t: +44 (0)141 548 2913  
f: +44 (0)141 552 7493  
e: [ugenquiries@strath.ac.uk](mailto:ugenquiries@strath.ac.uk)  
[pugenquiries@strath.ac.uk](mailto:pugenquiries@strath.ac.uk)  
[international@strath.ac.uk](mailto:international@strath.ac.uk)

Dean, Faculty of Engineering  
Professor Scott MacGregor  
[s.macgregor@eee.strath.ac.uk](mailto:s.macgregor@eee.strath.ac.uk)

Faculty Manager  
Dr Gayle Wilson  
[gayle.wilson@strath.ac.uk](mailto:gayle.wilson@strath.ac.uk)

### **First for Engineering**

- Eight Doctoral/Industrial Research Training Centres covering – Medical Devices, Wind Energy, Advanced Forming and Manufacture, Systems Engineering, Nuclear Engineering, Optics and Photonics, Offshore Renewable Energy, Continuous Manufacture and Crystallisation
- Research Portfolio of over £85 million and growing
- Over 250 Knowledge Transfer Partnerships
- The highest ‘Research Power’ measure in Scotland, top 10 in the UK (2008 RAE)
- Over 4000 engineering students from over 80 countries
- State-of-the-art laboratory and research facilities

---

the place of useful learning  
[www.strath.ac.uk](http://www.strath.ac.uk)  
University of Strathclyde Glasgow

The University of Strathclyde is a charitable body,  
registered in Scotland, with registration number SC015263

