



The
University
Of
Sheffield.

The University of Sheffield
BARTOLOMÉ HOUSE

The School Of Law.

prepared to succeed



Be prepared

We are a thriving, innovative law school with an exciting range of undergraduate and postgraduate programmes, as well as our own Legal Practice Course. We are a law school with a considerable reputation and a history stretching back over a hundred years. We're also a modern law school with a vibrant and forward-looking intellectual agenda.

to succeed.

Building upon past successes year after year, we have developed into one of the largest law schools in the country with world-class academics and top ratings for both research and teaching. All this, within one of the UK's top universities, makes the School of Law

an excellent start to your future career.

www.sheffield.ac.uk/law



“ Just a minute’s walk away from the university’s main campus, you’ll find the School of Law in its own dedicated building, Bartolomé House. ”

Welcome



Welcome to...	- 04	Life as a law student.	- 22
The School of Law.	- 06	By the students, for the students.	- 24
Excellent teaching. Research quality.	- 08	Undergraduate programmes.	- 26
We've got IT!	- 10	Postgraduate Study at the School of Law.	- 42
A few words on the University...	- 12	Legal Practice Course.	- 48
A bit about Sheffield...	- 14	F.A.Q.s	- 50
Where you'll live.	- 16	Getting around. Getting here.	- 51
International Students.	- 18		
Over 21s.	- 20		

Built at the beginning of the 1900s, Bartolomé House is an impressive building forming three sides of a square, with graceful arches, gargoyles and decorative wrought-ironwork. It's a distinctive building with real character. The old and the new - once inside you'll find all the modern facilities you would expect of a top law school - excellent IT provision, seminar rooms, a student internet common room, a café and our own courtroom. In every sense, a law school to be proud of.

Last year over a thousand students studied law on our various courses. Each year about four hundred students from the UK and around the world join them.



to 

We have a range of well-established undergraduate courses for you to choose from. Our traditional LLB Law course has a large annual intake highlighting its continuing popularity. We also offer an LLB in Law and Criminology – and with thirty years of criminological research expertise behind us and world-class academics you can be sure you're choosing well.

How about a qualifying law degree with international travel to Hong Kong, Australia, New Zealand, USA... sounds too good to be true? Not at all! We offer a four year LLB which covers all the main legal modules and compares our legal

system to those of other countries. Are you thinking, "But I don't speak the language?" You don't have to! While you're abroad you are taught in English!

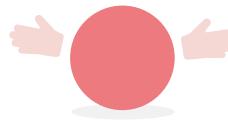
What if you DO speak a language and want to continue it while gaining a qualifying law degree? One of our three LLB Law with Languages degrees (French, German and Spanish) may be the right choice for you, again with a year's study abroad in some very exciting locations.

“ Teaching, resources, facilities, support: we're confident that at Sheffield we can give you the very best start to your future career. ”

The School



Most law students are aiming to become practising lawyers, which means further study. If you want to become a solicitor you can do the Legal Practice Course (LPC) right here in the law school. As a Sheffield graduate with a 2:2 degree or better, you'll be guaranteed a place, which is a great help at this crucial time when you're planning your career. Others decide on the Bar and with a good qualifying law degree from a top law school are well placed to achieve their goal – especially as Sheffield's law students excel in mooting and have a dedicated court room to practise in.



of Law.

Others decide on a period of postgraduate study. You'll find several internationally acclaimed postgraduate programmes here at Sheffield, including a thriving LLM programme, an MA in International Criminology and an MA in Biotechnology Law and Ethics, taught by staff respected throughout the world for their research and teaching.

Read on, using this booklet to help you decide where your interests lie. We've detailed our undergraduate programmes, postgraduate programmes, Legal Practice Course, admissions information and general useful points of interest.

Teaching, resources, facilities, support: we're confident that at Sheffield we can give you the very best start to your future career.



“ Applicants and employers alike are impressed by the reputation of the School of Law at the University of Sheffield. Given that there are about 100 UK law schools, what maintains that reputation and what makes us so special academically? ”

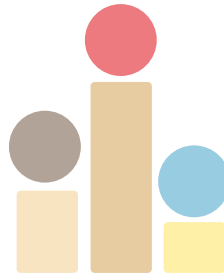
Excellent teaching



“ HEFCE rated our teaching as “excellent” – its highest accolade. ”



Ask the Higher Education Funding Council – HEFCE for short. It's HEFCE's job to fund all UK universities and to rank them according to the quality of their research and teaching. HEFCE rated our teaching as "excellent" – it's highest accolade. Inquiry-based learning is embedded across our curriculum. This develops extra skills in researching and problem solving and makes you resourceful and independent. These are qualities sought by employers, no matter where life takes you.



Research quality.

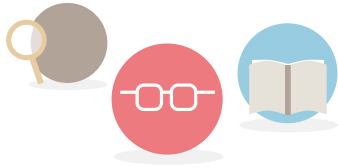
HEFCE also placed us in the top 20 law schools in its 2008 research assessment exercise. Research is the fuel that feeds a dynamic, innovative law school. Our research projects forge close links with the legal, criminological and business worlds and other centres across the globe. Our discoveries become yours, as new knowledge from our research filters into your teaching. There is just no substitute for that.



“ Take a look at Information Commons just a minute’s walk away from the law school, providing space to study individually or in groups, 24 hours a day, seven days a week. ”

We’ve got





The study facilities at the School of Law are great! A large dedicated computing suite is on hand for you to use. We'll help you get started in an induction programme that introduces you to the university systems you'll need. We have an internet café sponsored by top law firm Slaughter and May. Our building is wire free with plenty of quiet corners for you to study privately.

IT!

From the outset we will be teaching you how to study effectively in the university environment. You'll be taught how to access information online, how to research effectively and how to use the information you have found. Course material and

reading lists are provided online, and you'll be able to access information from any internet connection in the world.

Much more than just a library: Information Commons

Want to study late? Take a look at Information Commons just a minute's walk away from the law school, providing space to study individually or in groups, 24 hours a day, seven days a week, 365 days a year, using printed and electronic materials, together with full access to IT facilities, support and advice.

Read up and chill out. Some day all libraries will be like this - cool sofas... on-line and printed collections...plenty of IT facilities... staff to turn to for help... an integral coffee bar...



“ The University of Sheffield has produced no fewer than five Nobel Prize winners and also has a glittering array of ex-students – among them, astronaut Helen Sharman and comic genius Eddie Izzard. ”

A few words on

“ The university has 73 academic departments and some 24,000 students. ”





the University...

The School of Law has its own dedicated building, Bartolomé House, and two student law societies. This promotes a real sense of law student identity and



community, and yet we never forget that we're part of a large, thriving and prestigious university with a history dating back to the 1800's and officially opened in 1905 by King Edward VII.

And while we're name-dropping, the University of Sheffield has produced no fewer than five

Nobel Prize winners and also has a glittering array of ex-students – among them, astronaut Helen Sharman and comic genius Eddie Izzard.

The university has 73 academic departments and some 24,000 students. It is spread over a mile in the leafy and pleasant west of the city, housed in ivy clad red brick, or modern purpose-built architecture. The main central site occupies both sides of Western Bank, a major Sheffield route through to the city centre or the ring roads. Local transport facilities are excellent, with plenty of buses, and the futuristic supertram linking the university with other areas of the city and the rail and bus stations.



ff ...in a recent survey, Sheffield was found to be one of the cheapest and best places to live as a student in the whole of the UK... ”

A bit about

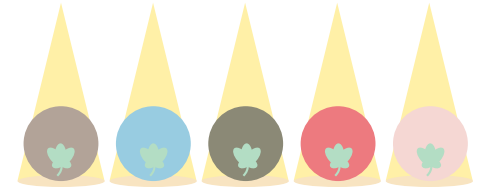


Sheffield is England's fourth largest city, built on seven hills and their river valleys. It all seems to be either uphill or downhill – but you get to love it! It's a large city, with a buzzing, redesigned city centre. A little further out you'll find some of the UK's top suburbs where the university's student village is situated. Originally famous for steel manufacturing, Sheffield is clean, green and has a good reputation for safety.

A city within a park - a third of Sheffield is set within the Peak District National Park with all its magnificent scenery, and this is a mere ten to fifteen minutes away from the

Cinema, theatre, dance, classical music, art: we can offer the lot in a packed year-round programme of events, as well as major venues used by the big names in rock and pop. Add to this the fact that in a recent survey, Sheffield was found to be one of the cheapest places to live as a student in the whole of the UK, you'll find you can afford the occasional treat that might put you out of pocket elsewhere.

Every major sport – and then some. As the first city to be designated a National City of Sport, Sheffield offers plenty



t Sheffield...

city centre! Derbyshire is just on the doorstep, offering plenty of opportunities for walking, pub lunches and some of the best rock climbing in the UK.

As a large city, there's so much going on – there's something for everyone. Sheffield's club scene is excellent and attracts the best DJs in the business. There are more than 20 clubs in the city centre and plenty more just outside. There's so much variety musically – any night of the week you can see the kind of thing you like best. Our own Students' Union hosts some of the best club-nights around, and organises transport to and from the student village as well.

of active and spectator sports for you to participate in, from club to world-class level, from football to basketball, speedway to snooker. Why not try your skills at snowboarding at Europe's largest all-weather ski slope, carved into the hillside on one of the many Sheffield hills? And as a student here you'll be able to join the S10 health club, U Sport, with 150 fitness stations on two levels, and a top class indoor swimming pool with poolside sauna and steam rooms. U Sport also boasts a bouldering arena for indoor climbing and high quality grass and turf pitches: you can enjoy playing every major sport here and perhaps try your hand at some different ones.



“ The Student Villages are set in the pleasant south western suburbs...

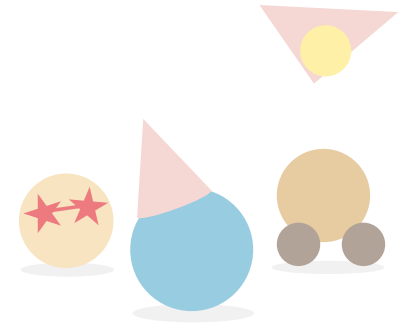
...this is the very best of modern apartment living. ”

Where



If dingy bedsit-land is your idea or experience of student accommodation, then think again. There are two main areas of university accommodation. The Endcliffe and Ranmoor Student Villages are set in the pleasant south western suburbs in sought-after Sheffield 10. Inter-site transport is available and runs between the student village and the university's central campus. The vast majority of student flats are brand new and en suite - this is the very best of modern apartment living.

City-based accommodation includes purpose-built en suite self-catered apartments. Close to the lively city centre near cosmopolitan West Street, the area hums with nightlife.



bar, café and refectory on site, as well as superb IT facilities, CCTV for your safety, and free internet TV, you can have a brilliant student living experience at the Village. Don't fancy cooking? Don't. Just use your meal card to eat in the refectory: there's a very good choice and special diets are catered for too.

you'll live.

As a first year student from out of town, provided you apply to us and choose Sheffield within the normal deadlines, you are guaranteed a place in university student accommodation. Check it all out, including descriptions, guarantees and prices on www.shef.ac.uk/housing.

Sheffield's got The Edge

There's always something in the evening at The Edge, the student village dining and entertainment block, with its superb new bar, café and plasma screen TVs. With a new

Perhaps you want to get from the Village to the Students' Union for a big club night, or gig? Don't worry – the Union organises transport there and back.





“If you’re an international student from any part of the world, Sheffield could be just the right place for you to study law.”

International



Many features of our university might attract you - our world-wide reputation for teaching and research; our friendly, cosmopolitan outlook; or the fact that every year, students from all around the world come to study in Sheffield, with international students making up about a quarter of the students in our law school.

The education offered here helps many to achieve great success in their careers in their home countries and elsewhere.

You'll find you can improve your English all the time you're here, by taking advantage of free language tuition and language labs. But you will need a good grasp of the language before we can offer you a place. We ask for a GCSE Grade C or an IELTS score of 7.0, with scores of at least 6.0 in each component. The British Council has IELTS preparation courses for candidates wishing to familiarise themselves with the examination format. We'll also consider other forms of English Language qualifications too.

Students.

We'll take good care of you. Provided you apply early enough you'll be guaranteed a place in university accommodation. You'll also have an academic tutor whom you can see with any academic problems. He or she should be able to advise you how to resolve any other problems you may have. We also have a very well-run University Health Service so you can be sure of any medical attention you may need.

Socially, you'll find there are plenty of student societies to join and meet like-minded people, and there's also an International Students' Bureau in the Students' Union.

For details of the latest fees and scholarships please see www.sheffield.ac.uk/ssid or www.sheffield.ac.uk/international





You'll find your age won't be an issue in the law school. In fact, we will value the enhanced experience and diversity of background you will bring to us. ””

Over 21s.

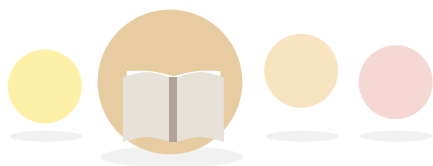


We encourage applications from mature students at all levels and welcome the life experiences you will bring to our student community

You'll find we are flexible about your qualifications if you're a mature applicant to our undergraduate programmes – because we realise that experience can count for as much as academic background.

Studying law full time can be a tough intellectual challenge and you will need to convince us you are ready for it, so we normally ask whether you've done some recent, relevant full or part time formal study. Relevant work experience in law, business or a related career can also assist your application.

Once everything is in place and you're here, you can expect encouragement and support from an academic tutor who will help with your academic progress. In addition you can make use of a network of support services for mature students run by the university, as well as the Mature Students' Association, which is run by the Students' Union.



If you need accommodation, a limited number of flats are available specifically for mature students. Details of these can be gained from our Accommodation and Campus Services Department – see their webpage for details – www.shef.ac.uk/housing. If you have children between one and five, you may be able place them in the university nursery. Accommodation and nursery places are filled on a first come first served basis.

See the webpage www.sheffield.ac.uk/ssid for further details.





“ As one of the larger law schools in the country, we have a large teaching staff including Readers and Professors. Part time teachers support the full time staff, and we also have a team of professional support staff. ”

Life as



Three things distinguish your experience as a law student from the experience of students studying any other discipline. First of all, our friendly student law societies. The EdBram Society is the largest student association in the School of Law. Just over a hundred years ago, Edward Bramley, a local solicitor, gave the first series of lectures in law and subsequently became Dean of the Law Faculty. Today, the student society named in his honour runs a wide range of academic, sporting and sponsored social events,



teams of our students have beaten all other law schools and won the national finals of the law moot court competition, going on to represent England at the International Court of Justice in the Hague.

a law student.

including trips abroad, mooting and the bi-annual Law Ball – social highlights of your university year. In addition, our Bar Soc organises a range of fun and educational activities and attracts students aiming for a career the Bar.

Secondly, mooting. This means recreating a courtroom in the classroom with all the fun and excitement of a courtroom debate and using your skills and persuasive powers to argue hypothetical cases. It isn't compulsory but we recommend you have a go – after all, it's part of what being a law student is all about! If you get good at it, you could end up arguing for England! In the recent past, three

Thirdly, Pro Bono activities are very strong here at Sheffield, with many of our students taking part in researching for local charities, working in our law clinic, or seeking to overturn cases of wrongful imprisonment in The Innocence Project.





“ One of your first ports of call as a student here will be the Students’ Union, voted the best in the country - again. ”

By the students,





for the students.

Well organised and efficiently run, this is the place for information of all kinds, as well as good food, superb entertainment, clubs and societies and the chance to see some major bands.

To help you make new friends on other courses, the Union also organises a brilliant programme called "Give it a go". You pay a small amount of money and have a go at a one-off new activity – it could be a fully organised visit to another city, or bell ringing, or skiing, or tap dancing. It could be speed dating, rock climbing, circus skills, or late night shopping. Each week offers about 35 different events at

different times of the day and evening. The programme changes every week, but one thing doesn't change – you're bound to have fun!

The Union was also selected as "Entertainments Venue of the Year" because of its "excellence in the club sector" – so you can be sure you'll enjoy yourself here.

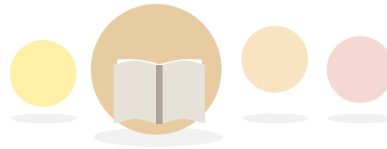
“ All our LLB programmes provide you with a qualifying law degree and enable you to gain full exemption from part 1 of the English Law Society and Bar professional examinations. ”

Undergraduate



A qualifying law degree covers the following subjects:

- public law (including constitutional law, administrative law and human rights)
- law of the European Union
- criminal law
- obligations (including contract, restitution and torts)
- land law, equity and trusts



programmes.

You study all the above as foundational subjects on each LLB programme.

BA Social Policy and Criminology, on the other hand, isn't a qualifying law degree and has no law content.

The programmes are based on modules. Full modules are worth 20 credits each and half modules worth 10 credits. The academic year is split into Autumn and Spring semesters and you must accumulate 120 credits in each academic year. Exams in the first year are in January and June. Assessments vary from subject to subject - some will be by closed or open book examination, others by marked

essay. In several options, assessment is entirely by essay or a research project.

Further details on all our courses, including the subjects taken in each semester, are available on www.shef.ac.uk/law/prospectiveug/programmes





“ A three year programme leading to a qualifying law honours degree, the Sheffield LLB allows you to specialise in your final year, by choosing from a wide list of options. ”

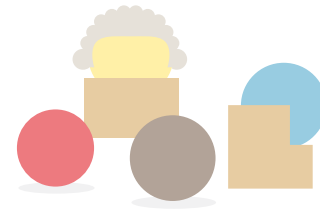
LLB (Hons) L



Three year qualifying law degree with a lot of optional choices.

Year or level	Semester 1	Semester 2
1	Understanding Law 1 Contract Law Public Law 1	Understanding Law 2 Torts Law Public Law 2
2	Property Law 1 EU Law Jurisprudence (A or B) or Understanding Criminology	Property Law 2 Criminal Law Restitution
3	Options - (to the value of 60 credits)	Options - (to the value of 60 credits)

aw (M100).

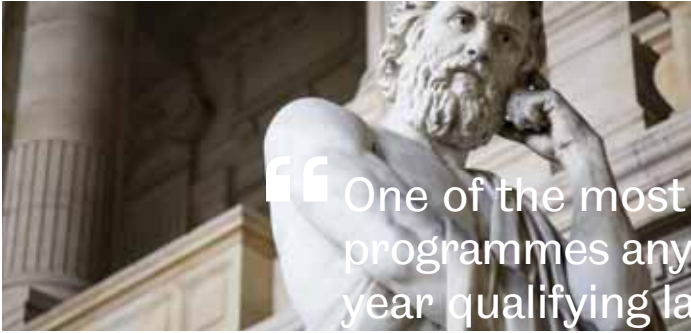


Options

This is a large law school with a large staff. It therefore follows that we are able to offer a very wide range of subjects for your optional choices. We currently have nearly 30 choices for semester 1 and over 45 choices for semester 2. The options range from commercial subjects through to criminological topics or modules such as Law and Medicine or Human Rights Law.

Options change from year to year – have a look at www.shef.ac.uk/law/prospectiveug/programmes/optional_modules for details.



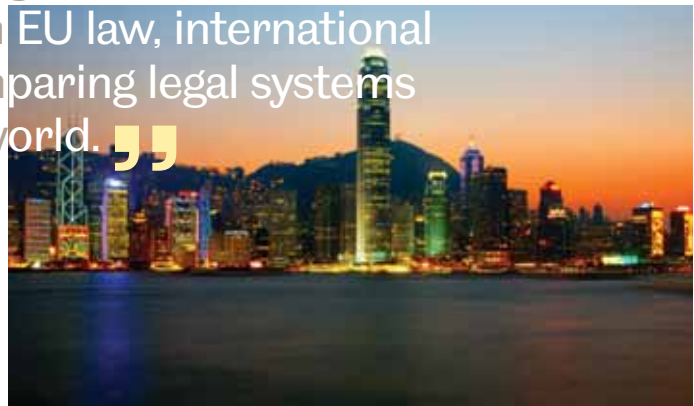


“ One of the most exciting law programmes anywhere. A four year qualifying law degree with a year abroad studying law - in English! ”

LLB (Hons) L



“ As well as English law, there is an emphasis on EU law, international law and comparing legal systems across the world. ”



Year or level	Semester 1	Semester 2
1	Understanding Law 1 Contract Law Public Law 1	Understanding Law 2 Torts Law Public Law 2
2	Property Law 1 EU Law International Law 1	Property Law 2 Criminal Law International Law 2
3	Abroad - (to the value of 60 credits)	Abroad - (to the value of 60 credits)
4	Options - (to the value of 60 credits)	Conflict of Laws Optional Modules - (to the value of 40 credits)

aw (European and International) (M120).

Options

This is a large law school with a large staff. It therefore follows that we are able to offer a very wide range of subjects for your optional choices. We currently have nearly 30 choices for semester 1 and over 45 choices for semester 2. The options range from commercial subjects through to criminological topics or modules such as Law and Medicine or Human Rights Law. Options change from year to year – have a look at www.shef.ac.uk/law/prospectiveug/programmes/optional_modules for details.

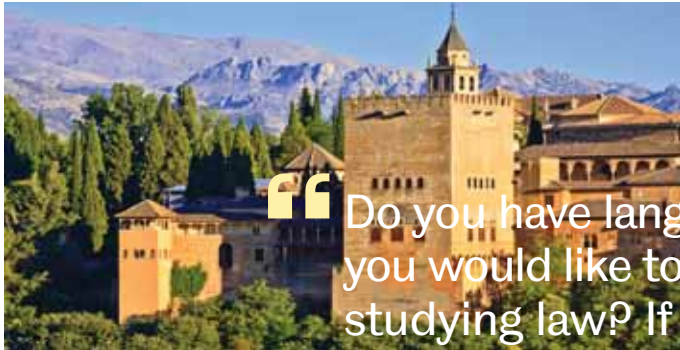
Destinations

For your year abroad, we offer an exciting and extensive selection of top international law schools. We discuss all the available options with you, and match you to a place at one of our exchange destinations, taking into account your

academic performance. The choice of available destinations continues to grow each year, and current links are found in:

Country	University Law School in:
Australia	Brisbane
Australia	Melbourne
Austria	Vienna
Belgium	Leuven
Canada	Ottawa
China	Hong Kong
Czech Republic	Prague
Denmark	Copenhagen
Estonia	Tartu
Finland	Helsinki
Finland	Turku
Germany	Hamburg

Country	University Law School in:
Greece	Athens
Iceland	Reykjavik
Lithuania	Vilnius
Netherlands	Tilburg
Netherlands	Utrecht
New Zealand	Christchurch
Poland	Gdansk
Poland	Warsaw
Slovenia	Ljubljana
Sweden	Lund
Sweden	Uppsala
USA	Wisconsin



“ Do you have language skills that you would like to develop whilst studying law? If so, these are the programmes for you. ”

Law with a



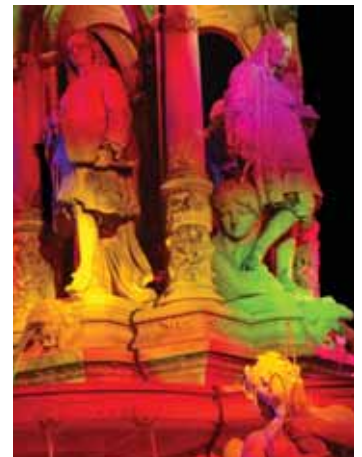
LLB (Hons) Law with French (M1R1)
LLB (Hons) Law with German (M1R2)
LLB (Hons) Law with Spanish (M1R4)



Sponsored by



FRESHFIELDS BRUCKHAUS DERINGER



Four year qualifying dual law/language degrees with a year abroad.

Year or level	Semester 1	Semester 2
1	Understanding Law 1 Contract Law Languages	Criminal Law, Torts Law Languages
2	Public Law 1 EU Law Languages	Public Law 2 Introduction to French, German, or Spanish Law Languages
3	Abroad - (to the value of 60 credits)	Abroad - (to the value of 60 credits)
4	Property Law 1 Languages Option	Property Law 2 Languages Option

language.

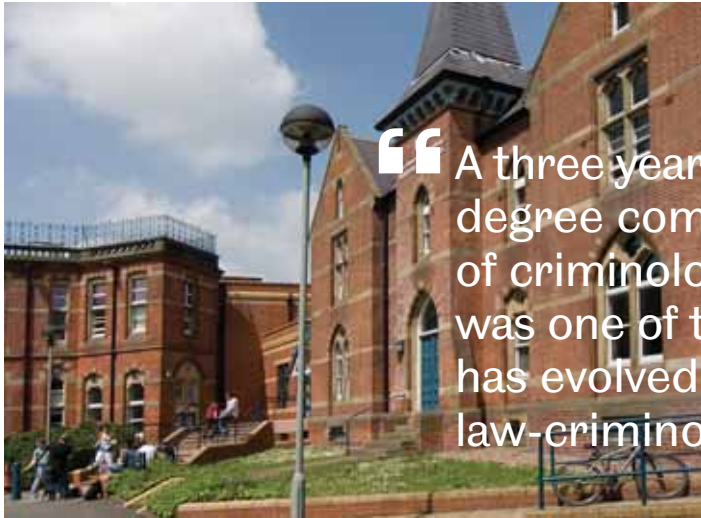
Options

This is a large law school with a large staff. It therefore follows that we are able to offer a very wide range of subjects for your optional choices. We currently have nearly 30 choices for semester 1 and over 45 choices for semester 2. The options range from commercial subjects through to criminological topics or modules such as Law and Medicine or Human Rights Law. Options change from year to year – have a look at www.shef.ac.uk/law/prospectiveug/programmes/optional_modules for details.

Destinations

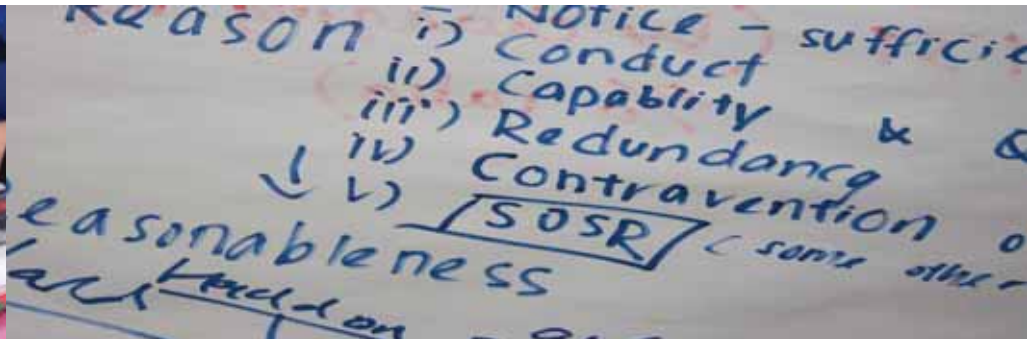
Links may change from time to time, but our current exchange partners are:

France	Germany	Spain
<ul style="list-style-type: none"> • Université Paul Cezanne Aix Marseille III • Université Jean Moulin Lyon III • Université Nancy II • Université Montesquieu - Bordeaux IV • Université Catholique de Louvain, Belgium 	<ul style="list-style-type: none"> • Freie Universität Berlin • Ernst-Moritz-Arndt Universität Greifswald • Westfälische Wilhelms Universität Münster • Universität Trier • Universität Regensburg 	<ul style="list-style-type: none"> • Universitat de Barcelona • Universidad de Granada • Universidad de Oviedo • Universidad de Salamanca • Universidad de Valencia • Universidad de Sevilla



“ A three year qualifying law degree combined with the study of criminology. This programme was one of the first of its type and has evolved into one of the leading law-criminology degrees in the UK. ”

LLB (Hons) Law a



This is one of the leading law-criminology degrees in the UK. Three year qualifying law degree with an emphasis on explanations of criminality, perceptions of crime and

punishment, criminal justice and other responses to crime. Expert criminologists. A long-standing programme.

Year or level	Semester 1	Semester 2
1	Understanding Law Contract Law Understanding Criminology	Introducing Criminological Research Torts Law Victimisation, policing, crime prevention
2	Public Law 1 40 Credits from: EU Law Property Law 1 (or must be taken at Level 3) Law/Criminology Option	Criminal Law Criminal Justice and Penal Policy 20 Credits from: Public Law 2 Property Law 2 (or must be taken at Level 3) Law/Criminology Option

and Criminology (M930).

Year or level	Semester 1	Semester 2
3	40 Credits from either: EU Law Property Law 1 (if not taken at Level 2) Law/Criminology Option Additional 20 credit module	40 Credits from either: Property Law 2 Public Law 2 (if not taken at Level 2) Law/Criminology Option Additional 20 credit module

For further details on programme structure please see www.shef.ac.uk/law/prospectiveug/lawcrim-breakdown

Options

This is a large law school with a large staff. It therefore follows that we are able to offer a very wide range of subjects for your optional choices. We currently have nearly 30 choices for semester 1 and over 45 choices for semester 2. The options range from commercial subjects

through to criminological topics or modules such as Law and Medicine or Human Rights Law. Options change from year to year – have a look at www.shef.ac.uk/law/prospectiveug/programmes/optional_modules for details.



A three year degree combining sociological studies with the study of criminology. ”

BA (Hons) Social Poli





cy and Criminology (ML94).

Taught by criminologists and sociologists, this programme is run jointly by the School of Law and the Department of Sociological Studies. While this does not lead to a qualifying law degree, it nevertheless allows students to develop their interests in the sociological and social policy aspects of the phenomenon of crime.

In the first year, eight modules provide an introduction to sociology, social policy and criminology. You learn, for example, about social divisions in modern societies, methods of social research and legal enquiry, and sociological perspectives on crime.

In the second and third years, you develop your knowledge of social policy, social theory and criminology and study research methods used in the criminological field. A wide range of options is available, both in criminological and in sociological subjects.

For course content please see the website of the department of Sociological Studies on www.shef.ac.uk/socstudies/prospectivoug/courses/criminology





“ We recognise that the potential to study law may be demonstrated in a variety of ways, and are flexible in our assessment of the suitability of individual applicants. ”

Undergraduate courses

UCAS course codes:

LLB (Hons) Law M100

LLB (Hons) Law (European and International) M120

LLB (Hons) Law with French M1R1

LLB (Hons) Law with German M1R2

LLB (Hons) Law with Spanish M1R4

LLB (Hons) Law and Criminology M930

BA (Hons) Social Policy and Criminology ML94

Entry requirements

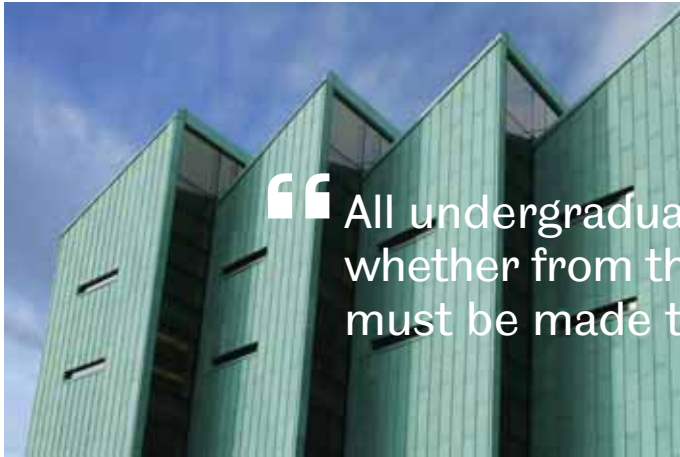
UCAS code	A Levels	International Baccalaureate	Scottish Highers/Advanced Highers	Irish Leaving Certificate
M100 and M120	AAA	37 points	AAAA + AB	AAAAB
M1R1	AAB any one of which must be French	35 points including 6 points in French	AAAA including French	AAABB any one of which must be French
M1R2	AAB any one of which must be German	35 points including 6 points in German	AAAA including German	AAABB any one of which must be German
M1R4	AAB any one of which must be Spanish	35 points including 6 points in Spanish	AAAA including Spanish	AAABB any one of which must be Spanish
M930	AAB	35 points	AAAA	AAABB
ML94	ABB	33 points	AAAB	AABBB

admissions procedures.

All A Level subjects approved by the Qualifications and Curriculum Agency are acceptable to us; however, we prefer you to offer at least two A Levels in mainstream subjects which do not have a large practical content. We will accept General Studies at full A Level. See our webpage www.shef.ac.uk/law/prospectiveug/acceptablesubjects for details of acceptable A Level subjects.

We recognise that the potential to study law may be demonstrated in a variety of ways, and are flexible in our assessment of the suitability of individual applicants. The school therefore welcomes applications from people offering other types and combinations of qualifications e.g. BTEC diplomas and overseas qualifications.





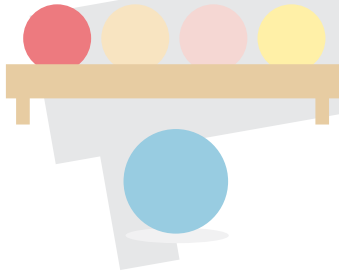
“ All undergraduate applications, whether from the UK or overseas, must be made through UCAS. ”

How to



The deadline for applications is in January of the year of entry, although later applications will normally be considered. Offers will be made on the basis of careful review of UCAS forms by our Admissions Tutor. As a general rule we do not interview standard entry candidates.

The university runs pre-application open days (June, July, and September) so that you can visit Sheffield and the university and gather the information you need before you apply. See www.shef.ac.uk/opendays for details and to book places.



Undergraduate queries:

Jane Hill

j.p.hill@sheffield.ac.uk or law@sheffield.ac.uk

tel 0114 222 6837

**International undergraduate queries and
postgraduate information**

Nicola Harrison

n.l.harrison@sheffield.ac.uk or

(postgraduate) pgradlaw@sheffield.ac.uk

tel +44 (0) 114 222 6770

apply...

Once you have applied and have been made an offer, the law school will invite you (and your parents/guardians or partner if you wish) to a post-application open day in December, January, February or March so that you can decide between your UCAS choices.

Gap years aren't a problem. We'll be happy to defer your offer at whatever stage of the admissions process if you decide to take a year out before university.

Further queries about law programme content, admissions, qualifications, subjects or any admissions information at all Do please contact us: we'll try and help.

To contact UCAS:

UCAS

PO Box 28

Cheltenham

Gloucestershire

GL52 3AZ

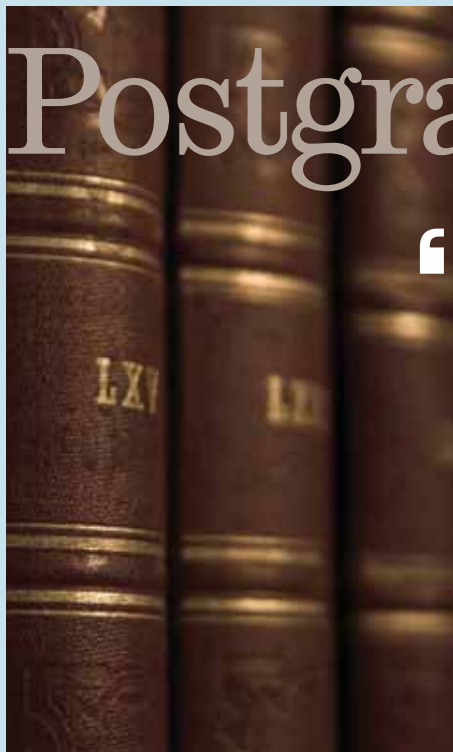
www.UCAS.com

Enquiries service: +44 (0) 1242 227788

Email: enq@ucas.ac.uk

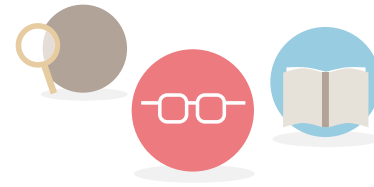
“ Postgraduate study is thriving and exciting within the law school – we currently have over 300 postgraduate students. ”

Postgraduate Study at



“ The School of Law is widely respected for its academic reputation. ”

The School of Law provides the opportunity for students to have a seamless law education. You may choose to do a period of postgraduate study after your undergraduate studies are completed and, if you wish to be a practising solicitor, then you must complete the Legal Practice Course. If you do go on to postgraduate study, then there is no better place than Sheffield. Postgraduate study is thriving and exciting within the law school – we currently have over 300 postgraduate students. You will join a school with real commitment to postgraduate students and their studies, where you will find support and encouragement throughout your degree.



the School of Law.

The School of Law is widely respected for its academic reputation. Research Supervisors and staff who teach on our taught postgraduate programmes are known internationally for their research in many areas of legal and criminological study. Apart from their academic publishing, many have been involved in informing policy processes through its research and advisory work for government departments, public agencies and regional, national and international bodies. Our teaching is consistently rated as 'excellent' – HEFCE's highest accolade.





“ If you have a non-law degree or a degree in law from another country, you can convert your knowledge to law with either our two-year MA in Law or, subject to approval, our proposed new one-year Graduate Diploma in Law. ”

Taught

LLM in Commercial Law
LLM in International Law
LLM in International and European Law
MA in Biotechnology Law and Ethics
MA in European Law Politics and Governance
MA in Global Politics and Law
MA in International Criminology
MA in Law
MA in Socio-Legal Research

For further information, please visit our website www.shef.ac.uk/law/postgraduate



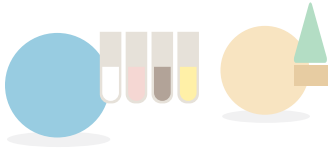
Proposed new programmes – subject to approvals

Graduate Diploma in Law

LLM in International Commercial Law and Practice

LLM in European Health Law and Policy

LLM in Criminal Law and Justice



programmes.

Entry Requirements

For the LLM programmes, usually an upper second class Honours degree, or international equivalent, in law or a subject with a large legal component, although we will consider your application if you have other qualifications. For the MA programmes, an upper second class Honours degree, in law or a relevant subject. International students must also have a suitable language qualification.





“ Research activity in the school is focused on five clusters, each of the clusters stimulate research by providing a forum within which ideas can be disseminated and discussed. ”

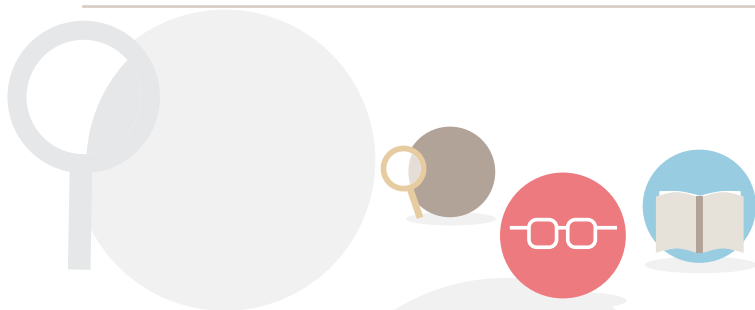
Research

Students can study for an MPhil, PhD or LLM by research



Research activity in the school is focused on five clusters, each of the clusters stimulate research by providing a forum within which ideas can be disseminated and discussed. All members of the academic staff and research students are members of at least one of the clusters, each of which organises its own programme of seminars.

Research Supervision in the law school is also based around our five main research clusters, where our subject experts offer a supervisory and support network for research students in the law school. We can offer supervision on all of the wide range of topics researched by members of the clusters. Research supervisors are known internationally for their research in many areas of legal and criminological study. Apart from their academic publishing, many have been involved in informing policy through research advisory work.



The School of Law's research clusters are:

- Centre for Criminological Research
- Centre for the Study of Law in Society
- Institute for Commercial Law Studies
- Sheffield Institute for Biotechnology Law and Ethics
- Sheffield Centre for International and European Law

Studentships

Please contact the Research Support Manager for information.

To apply

For further information on any of our postgraduate courses, please contact:

Miss Harriet Godfrey
Research Support Manager
The School of Law
University of Sheffield
Bartolomé House
Winter Street
Sheffield S3 7ND. UK
Tel +44 (0)114 222 6890
Fax +44 (0)114 222 6832
Email: h.godfrey@sheffield.ac.uk

degrees.

More details on the specific areas we can currently offer supervision in are available on our website, www.shef.ac.uk/law or from our postgraduate admissions tutor.

Entry requirements

A good masters level degree (or equivalent related experience), plus an upper second class Honours undergraduate degree, or international equivalents, in a relevant subject. International students must also have a suitable language qualification.





“ The Legal Practice Course at the University of Sheffield is England’s only LPC set within a prestigious Russell Group university. ”

Legal Practice



Sheffield’s LPC is a long-established course that is highly regarded by the profession. Your skilled teachers are dedicated professionals, many of whom have years of experience in practice. The course has a high pass rate and its own dedicated, caring and effective careers advisory service.

Available full-time or part-time, offering competitive fees and providing many elective subjects to tailor your requirements to large corporate firms or smaller regional practices. Flexibility to suit your needs: you are able to choose whether to take Stage One and Stage Two separately or immediately following each other.

In an increasingly competitive world we also offer the Masters in Legal Practice to our students who gain a Commendation or Distinction on our LPC. This programme

How to apply

You should apply through the Legal Practice Course Central Applications Board at www.lawcabs.ac.uk

The opening and closing dates for applications and the procedures for second round and late applications are on the Central Applications Board website.

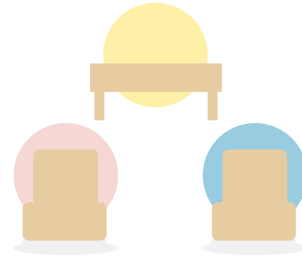
Course fees

For details of our current fees, visit www.shef.ac.uk/law/lpc/feesapply

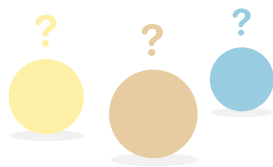
Further information from our LPC office on: **tel 0114 222 6752**

Course.

can be undertaken in six months and allows you to demonstrate to employers that you have legal reasoning, skills and research at Masters level.



F.A.Q.'s



Q Will I be able to practise as a solicitor or a barrister as soon as I complete my LLB degree?

A No. Wherever you study, once you have graduated, you must complete the vocational stage of training – the LPC for solicitors and the BVC for barristers – and then you must train for a period “on the job”. However, your degree will be a qualifying law degree, which means that after graduating you can go straight on to the vocational stage without further study.

Q What if I don't want to be a practising lawyer? What else can I do with my Sheffield law degree?

A Almost anything you want. A Sheffield law degree is incredibly well respected in all fields – our students have gone on to become accountants, P.R. consultants, general managers, city traders, investment bankers, even authors and actors – you name it, they've done it.

Q I've heard Sheffield is a safe city. What does that mean for students?

A Though crime happens everywhere, Sheffield is a safe city – statistics in the categories “crime against the person” and “crime against property” show that you will be safer here than in almost any other major city in the UK. The university encourages you to look after yourself and your property and issues loads of advice about this in your first week. The Student Villages are situated in one of the top suburbs in the UK. The Students' Union also organises intersite transport between the Student Villages and the central campus. And it also runs a women-only minibus to take women to and from Union gigs and clubnights – buy a ticket at the Union beforehand – provided you live no more than two miles away the bus will pick you up and drop you home – door to door.

Q How much are the course fees and are there any bursaries?

A Check these out on-line for the latest information – see www.shef.ac.uk/undergraduate/finance/fees

Q Do you have any famous names among your former students?

A Yes we do and have had since Law at Sheffield began. However, there's no point talking about history – we're more interested in the present; hence you will find, among well-known modern-day lawyers, that The Rt Hon. Lord Justice Maurice Kay, Lord Justice of Appeal, gained his LLB here and so did two high court judges and a lot of other highly successful lawyers including the Managing Partner of a major firm, a Federal Court Judge of Malaysia and the Chairman of the National Trust for Scotland. We've mentioned six individuals here. Three are women.

Q Do you have any other links with the legal profession and will I be able to meet barristers and solicitors when I join the course?

A Major law firms sponsor us in all kinds of ways, from improving and enhancing facilities in our law school, to the donation of prizes for achievement, or sponsorship for individual students. They will also generously sponsor student events such as the bi-annual Law Ball, or evening entertainments in city centre restaurants; attend the events and you get to meet the lawyers themselves. More formally, staff in the law school and in our Careers Service regularly organise speakers from the legal profession, both barristers and solicitors, whom you can meet afterwards and personally ask any remaining questions you may have. In addition, students working in our Pro Bono unit are closely supervised by solicitors involved in the schemes.

Q Do you issue reading lists?

A Not until you arrive here. Once you're registered you are issued with library passwords to enable you to gain access to the on-line collection of law texts and journals.

Q When does my course start and finish?

A Check out the information on semester dates across the duration of your course on www.shef.ac.uk/about/dates



Getting here.

By car

From the north, east and south, approach Sheffield by the M1 (and M18 if necessary). From the west use the M60 and A628 Woodhead pass, following the signs for Sheffield. For further directions, parking information and for details of the Park and Ride schemes please see www.shef.ac.uk/visitors/mapsandtravel/car

By train

Sheffield is well served by rail and regular services connect us to London St Pancras (over 2 hours), Birmingham (1.25 hours), Leeds (1 hour) etc. Once you arrive at Sheffield Station, the Supertram connects you directly with the university.

By coach

There is a comprehensive coach service to most parts of the country from Sheffield Transport Interchange, (next to Sheffield Station), in central Sheffield. The journey to and from London takes approximately 3.5 hours. Once you arrive at Sheffield Interchange, the Supertram connects you directly with the university.

Getting around.

By Supertram

Supertram connects the railway station and Transport Interchange (for coaches/buses) directly to the university. Follow the signs at the railway station or Interchange for Supertram. Catch a Blue Route tram (destination Malin Bridge) and alight at the University Tram Stop. Trams run every 10 minutes during the day. From the tram stop walk uphill to Winter Street to find the law school, a matter of only a few minutes.

By bus

Buses to the university are frequent and inexpensive. From the railway station and Interchange you can take the no. 40 directly to the university, or from the city centre the 51 and 52. The no. 80, running every few minutes, connects the central campus (outside the Hicks Building) to the Student Villages. For further details see www.shef.ac.uk/visitors/mapsandtravel/local

By taxi

There are taxi ranks at Sheffield Station and in the city centre next to the City Hall. The journey may take just over 5 minutes, or up to 20 minutes depending on traffic.

For further details please see www.shef.ac.uk/visitors





The
University
Of
Sheffield.

The School Of Law.

Bartolomé House
Winter Street
Sheffield
S3 7ND
United Kingdom

T +44 (0)114 222 6770/6837

F +44 (0)114 222 6832

E law@sheffield.ac.uk or uglaw4u@sheffield.ac.uk

www.sheffield.ac.uk/law