

School of Law

Postgraduate Studies

LLM in International Maritime Law
LLM in International Commercial Law
LLM in International Trade Law
LLM in International Commercial and Maritime Law
LLM in International Business Law

Swansea University



CONTENTS

WELCOME TO THE SCHOOL OF LAW	3
SWANSEA - A GREAT PLACE TO LIVE AND STUDY	4-5
SWANSEA CITY AND SURROUNDING AREA	6-7
WHY POSTGRADUATE LEGAL EDUCATION AT SWANSEA?	8-9
RESEARCH-LED MODERN LAW SCHOOL	10-11
OUTSTANDING STUDENT EXPERIENCE	12-13
EXCELLENT EMPLOYMENT PROSPECTS	14-15
TAUGHT SPECIALIST LLM DEGREES	16-17
LLM IN INTERNATIONAL MARITIME LAW	
LLM IN INTERNATIONAL COMMERCIAL LAW	
LLM IN INTERNATIONAL TRADE LAW	
LLM IN INTERNATIONAL COMMERCIAL AND MARITIME LAW	
LLM IN INTERNATIONAL BUSINESS LAW	
INDIVIDUAL MODULES AVAILABLE FOR LLM PROGRAMMES	18-20
SPECIALIST TEAM	21-24
ENTRY REQUIREMENTS AND ADMISSIONS PROCEDURES	25
ADMISSION PROCESS	26



WELCOME

The School of Law is a thriving academic environment committed to excellence in teaching/research and providing an outstanding student experience. This brochure provides an insight into our innovative LLM programmes in International Maritime Law, International Commercial Law, International Trade Law, International Commercial and Maritime Law and International Business Law.

The wide range of LLM degrees offered by the School of Law gives students the advantage of choice and specialisms. Students are able to gain an in-depth knowledge in the different subject areas set out above. All of the programmes focus on legal regimes beyond national boundaries and have been developed with a view to providing students with a sound and relevant body of information which have a practical value. You will be taught by experts with international reputations.

The LLM programmes at Swansea require commitment to study throughout one academic year. Students will be given the opportunity to develop a number of important skills which are not only essential to those wishing to become lawyers but are valuable, transferable skills in themselves in other employment contexts.

We are committed to legal scholarship and are a research-led School. To this end, the Institute of International Shipping and Trade Law has been formed to promote research and teaching of the highest standards in the field of international shipping and trade Law with also emphasis on the use of intellectual property rights in international trade and public aspects of international trade including theoretical foundations. Both the Institute of International Shipping and Trade Law and its members are actively involved in the delivery of our LLM programmes and our student community benefits directly from the research undertaken within the Institute and its international reputation. Other research centres within the School are involved in research in the realm of international and European law (Richard Price Centre); environmental law (Centre for Environmental and Energy Law and Policy); criminal justice and criminology (Centre for Criminal Justice and Criminology) and devolution and Welsh law (Hywel Dda Institute). Our other master programmes enjoy the support of these research centres and the participation of their members.

The School provides first class modern teaching facilities and high quality, professional teaching in a friendly and supportive environment. You will have the opportunity to meet people from the UK, Europe and overseas and make friends, as well as capturing lasting memories of your time with us in the School.

To find out more about the School you can browse our web pages at www.swansea.ac.uk/law.

We look forward to welcoming you to Swansea.

Professor Barış Soyer

Director of Taught Masters Programmes

SWANSEA - A GREAT PLACE TO LIVE AND STUDY

- RESEARCH-LED UNIVERSITY
- HIGH LEVEL OF STUDENT SATISFACTION
- RECOGNISED FOR QUALITY OF TEACHING
- SELF-CONTAINED MODERN CAMPUS
- EXTENSIVE SPORTING FACILITIES



“This close-knit campus is set in rolling parkland that overlooks Swansea Bay on the Gower Peninsular, an area of outstanding natural beauty”

THE GUARDIAN UNIVERSITY GUIDE 2007



“The LLM experience I had at Swansea has been the best experience of my life. Apart from meeting new friends from all around the world and exploring a foreign culture, I had the privilege of studying in a friendly and supportive environment. The relationship between the staff and students was so informal and relaxed and the social gatherings at the local Pub were really amazing. I was impressed by the fantastic learning environment created by highly skilled lecturers. I recommend everyone considering a postgraduate law degree to put Swansea on the top of their list.”

Nicole Paredes (Germany)
Completed LLM in International Commercial Law

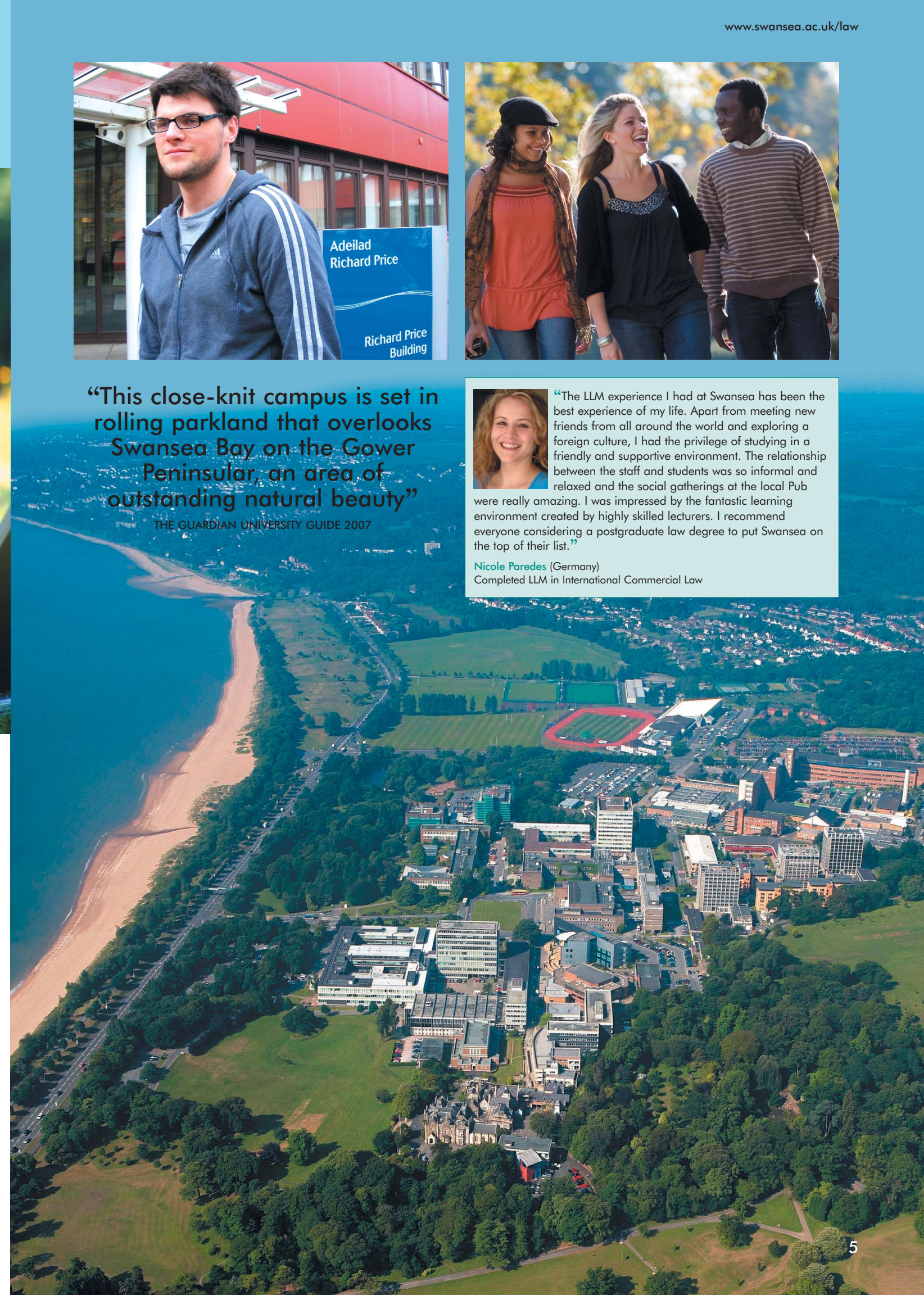
THE UNIVERSITY - RESEARCH AND TEACHING EXCELLENCE

Founded in 1920, Swansea is a vibrant, research-led university at the forefront of academic and scientific discovery. In the 2008 Research Assessment Exercise (RAE) Swansea University has demonstrated an extraordinarily strong performance against other UK universities in almost all disciplines submitted to scrutiny. Overall at Swansea University, almost 50 per cent of staff submitted for assessment have been given the highest 4* and 3* ratings, which, according to the RAE, means they are producing research which is world-leading or internationally excellent in terms of its originality, significance and rigour. Within Wales, out of 31 subject areas submitted, Swansea University came first in 17 areas in Wales, and first or second in 24 areas. This is a huge endorsement of Swansea University’s research credentials and investment plans over the past few years.

Swansea University was awarded the Best Student Experience in the United Kingdom by the Times Higher Education Supplement in 2005 beating 170 UK institutions to top the

poll, and was again shortlisted for the Prize in 2006. Student satisfaction is very high at Swansea University. For example, the University is ranked 23rd in the Student Satisfaction Survey conducted by the Times Higher Education Supplement in 2010. Again, Swansea University is recognised in **The Sunday Times University Guide’s** Top 20 academic institutions in the UK for the quality of its teaching.

The University, lying on the wide sweep of Swansea Bay, is situated in a large area of landscaped parkland, within easy reach of the City Centre, the picturesque fishing village of Mumbles and the Gower peninsula. The campus is largely self-contained, complete with its own theatre, shops, bookshop, bank, restaurants and medical care. In addition, the University has extensive sporting facilities with its own playing fields and Olympic-sized swimming pool. The Students’ Union also provides support facilities and organises social and cultural activities for Swansea students.



SWANSEA CITY AND SURROUNDING AREA

- RICH AND DIVERSE CULTURAL HERITAGE
- VARIED CHOICE OF RESTAURANTS AND BARS
- SURROUNDED BY BEACHES AND BEAUTIFUL COUNTRYSIDE
- HOME OF WRITER DYLAN THOMAS



A VIBRANT EUROPEAN CITY IN A STUNNING LOCATION

With a population of 220,000, Swansea is the second largest city in Wales and is an important commercial centre and major tourist attraction. The City itself has a shopping centre combining aspects of modern life, most High Street and select stores being represented, with a touch of the traditional, through its Central Market and street fairs.

The City is well known for its vibrant nightlife, with bars and restaurants to suit every age and taste. Swansea also boasts top-of-the-range sporting facilities such as the Wales National Pool, the only 50m swimming-pool in Wales, and the fantastic Liberty Stadium, a 20,000 seat venue and home of Swansea City Football Club and the Ospreys Rugby Team.

Cultural Entertainment

Swansea has a great deal to offer in terms of cultural entertainment. The Grand Theatre is among the most important in Britain and attracts major theatre companies, opera and international entertainers.

Swansea plays host to the annual 'Festival of Music and Arts', attracting many of the world's finest musicians. The Dylan Thomas Literature Centre, a beautifully restored, listed building, is home to a year-round programme of literary events, including book launches, plays, poetry evenings, changing exhibitions and science talks. It hosts the annual Dylan Thomas Festival, attracting an international audience to celebrate the work and the continuing inspiration of one of the twentieth century's greatest writers in his home city.

The Glynn Vivian Art Gallery, once declared the Best Museum of Fine and Applied Art, is an elegant Italian style building, housing both permanent and temporary exhibitions. The Gallery's Permanent Collection includes old masters, an international collection of porcelain and Swansea china, contemporary modern art, and sculpture by Hepworth, Nicholson and Nash alongside Welsh artists such as Ceri Richards, Gwen and Augustus John and Alfred Janes.

Taliesin Arts Centre is situated within the University campus and hosts a broad programme of events including cinema screenings, visiting exhibitions and a great variety of live performances, from dance and drama to jazz and world music. The Centre's Oriel Ceri Richards Gallery hosts a range of exhibitions throughout the year, presenting work by emerging and established artists alongside jewellery, cards and gifts to suit all tastes. An extension to the Taliesin Art centre houses the Egypt Centre. This two-storey gallery contains an important collection of antiquities from the Ancient Egypt.



The City and Surrounding Areas

Much of the city centre has been rebuilt in the latter half of the last century, yet still retains its old charm and character. Recent developments include the conversion of Swansea's former dockyard into the cosmopolitan Maritime Quarter, which has won awards for its design and been held up as a model for many maritime developments across Europe. A popular tourist attraction, the Maritime Quarter houses over 600 yachts and provides the location for art galleries, the National Waterfront Museum and a wide variety of places to eat and drink.



The Gower peninsula, the first region in Britain to be designated an 'Area of Outstanding Natural Beauty', is 19-miles long and comprises some of Wales' cleanest and most stunning beaches, including Rhossili, where you can enjoy the most spectacular view of the famous Worm's Head, Three Cliffs - claimed by many as one of the most scenic and photographed bays in Gower, and Llangennith which is one of the premier surf beaches in the UK. Gower beaches are also popular with hang-gliders, rock-climbers and horse riders. There are also plenty of opportunities for hiking and cycling in the Gower.

To the north of Swansea, you can explore the countryside around the Towy Valley, where you will find the dramatic ruins of Carreg Cennen Castle, or the beautiful and rugged Brecon Beacons National Park whose mountain ranges and vast open spaces provide the perfect setting for walking, caving and climbing.

Mumbles village, a few miles west along the sea front, is a popular tourist attraction. This quaint Victorian fishing village is home to some of the finest restaurants in Swansea, ranging from international cuisine to the more traditional Welsh fare, serving local produce such as freshly caught fish and other seafood delicacies. Amongst the small, exclusive shops you will find local pottery, traditional Welsh lovespoons and designer surfwear, and can browse the smart art galleries and craft shops. Famous residents include Hollywood superstars Michael Douglas and Swansea-born Catherine Zeta Jones.

“Swansea offers a friendly, safe and fun place to live and learn and the surroundings are second to none”

THE GUARDIAN UNIVERSITY GUIDE 2007



“Studying the LLM programme in Maritime Law in Swansea University has proved to be a unique and invaluable experience. Truly international in terms of professors, content and class, this programme gave me the taste of real scholarly approach to maritime law. It provided me with knowledge of high practical value, which I now use in my job in the insurance sector. It also helped me meet great new friends from all over the world. Besides Swansea is a beautiful town, perfect for studying and occasional day-off, and South Wales in large is a must-see corner of the world for everybody.”

Anton Kossinov (Estonia)
Completed LLM in International Maritime Law



WHY POSTGRADUATE LEGAL EDUCATION AT SWANSEA?

- EXPERT TEACHING AND SUPERB LEARNING ENVIRONMENT
- EXCEPTIONAL STUDENT SUPPORT
- RESEARCH-LED MODERN LAW SCHOOL
- OUTSTANDING STUDENT EXPERIENCE
- EXCELLENT EMPLOYMENT PROSPECTS




EXCEPTIONAL STUDENT SUPPORT

The completion rate amongst our postgraduate students is exceptionally high. This is assisted by the support given to our students at various levels. Each postgraduate student is appointed a personal mentor who will assist in dealing with problems students may encounter during their studies. The School also has a disability liaison officer to assist students with special needs.

The School offers a friendly and supportive environment, with social activities organised throughout the year, affording the opportunity for postgraduate students to meet with academic supervisors and to also establish friendships with fellow students.

English language support courses are available for overseas law students throughout the year to assist them in improving their legal writing and reading skills.

Overseas students also benefit from the International Student Advisory Service (ISAS), established as part of the Student Support Services Department. The ISAS provides information and advice on non-academic matters, including immigration advice and services, to all international (non-UK) students and their dependants. The service provided by the ISAS is very valuable and Swansea University is ranked 7th in the UK for satisfaction with Student Support Services (2009-10).

“From the very day I stepped into the Law School, I knew that my choice was the right one! The learning environment created here is impressive. My tutors are absolutely brilliant: dedicated to their work, enthusiastic, knowledgeable and very approachable. You can always be sure of receiving a helping hand here!”

Jummai Abarshi (Nigeria)
Completed LLM in International Commercial and Maritime Law

EXPERT TEACHING AND SUPERB LEARNING ENVIRONMENT

Academic staff teaching at postgraduate level are at the forefront of scholarship in their particular areas of expertise, which they combine with skilled and innovative teaching. In the most recent Teaching Quality Assurance Survey conducted by the UK Quality Assurance Agency, the teaching in the Law School was awarded the highest rating possible of ‘Commendable’. Similarly, in the most recent National Student Survey (NSS) conducted in 2010 in the School of Law the student satisfaction rate was 90%.

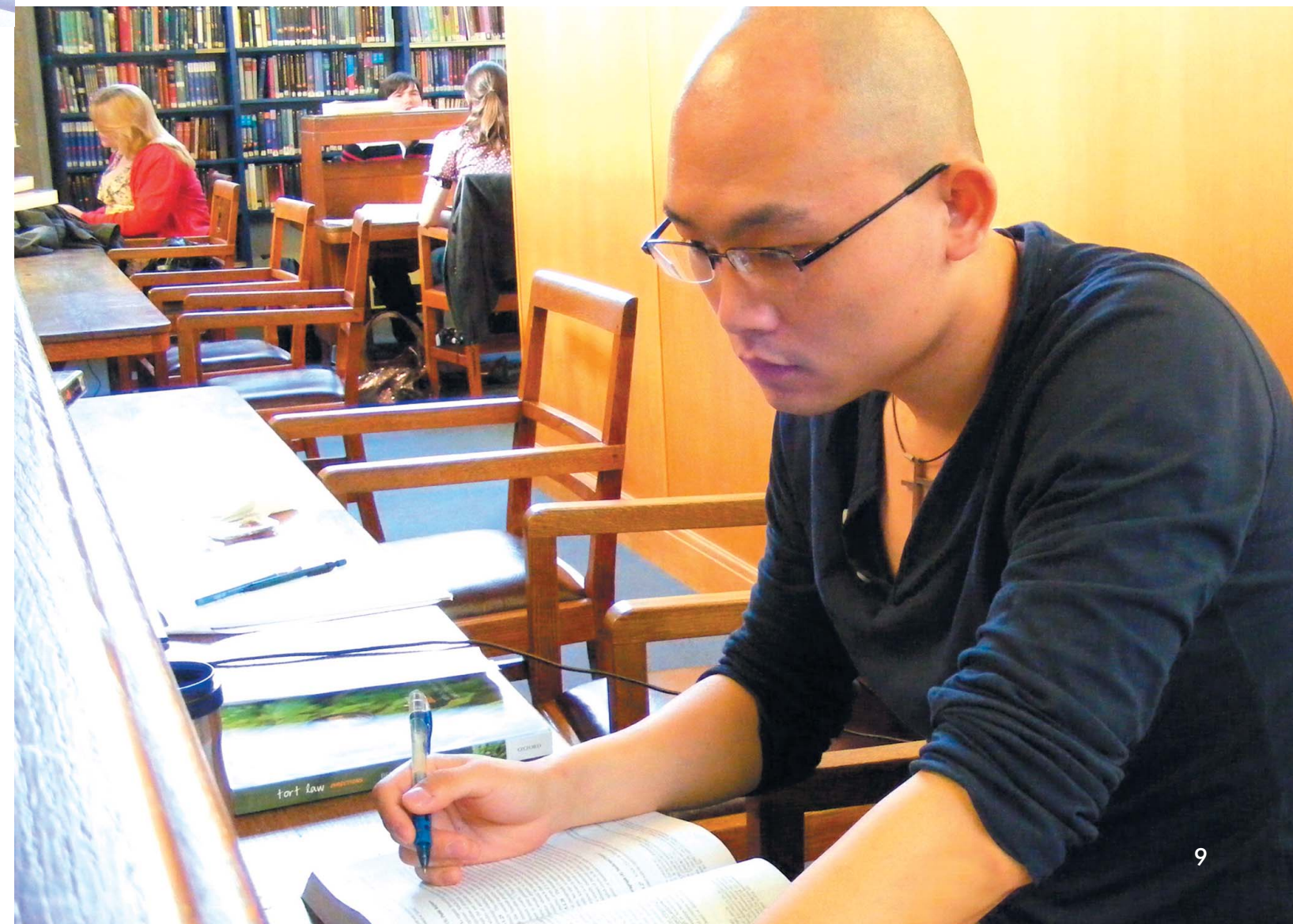


The Survey is commissioned by the Higher Education Funding Council and provides students at UK universities with an opportunity to express their views on their higher education experience.

Teaching is conducted in small classes and our students always find an opportunity to participate in discussions and put their views across. Students also benefit from a series of guest lectures, delivered by experts drawn from legal practice, academia and business.

The University Library is a research library, containing more than 870,000 books and periodicals. The Law Library hosts a fine collection of up-to-date legal materials representing works from a variety of jurisdictions beyond the United Kingdom and Europe, including a substantial American and Commonwealth component. Law students also have access to electronic legal databases, such as Lexis, West Law, i-law and Hein Online.

IT facilities at Swansea are excellent with open access to more than 2000 computers on campus, with free internet access from University managed student accommodation. Within the Law School, there is a dedicated resource room with computer facilities for postgraduate students.



RESEARCH-LED MODERN LAW SCHOOL

The Law School is a thriving academic environment and offers a contemporary and inspirational legal education. Its mission is to assist the development of legal practice and theory by producing graduates with variable skills. Members of the School's LLM team are active in research and are at the cutting edge of their discipline, publishing books and articles at the highest level. Consequently, in the most recent Research Assessment Exercise (RAE 2008), an evaluation of the quality of research underway across the UK higher education institutions, 95% of research conducted in the Law School has been recognised to have achieved an international standard. This breadth of international level research activity was attained by only 11 of the 67 law schools taking part in the RAE exercise.

Institute of International Shipping and Trade Law

The leadership in terms of research in the realms of shipping, trade and commercial law is provided by the Institute of International Shipping and Trade Law (IISTL). Students enrolled on the LLM Programmes in International Maritime Law, International Commercial Law, International Trade Law, International Commercial and Maritime Law and International Business Law are likely to benefit not only from the IISTL's world-wide reputation but also from the activities it holds throughout the academic year.

The IISTL also awards several prizes and bursaries to successful LLM students each academic year.

The Institute was formed in 2000 to promote research, teaching and professional training of the highest standards in the fields of international shipping and trade law; and also to foster co-operation with other academic institutions and professional, commercial, shipping and insurance organisations. Shortly after its foundation, it gained the University Research Centre status. The Institute organises visiting lectures, seminars and conferences, offers consultancy services and training programmes for lawyers, commercial, insurance, and financial institutions, in addition to the shipping industry. It has developed and maintained close connections with leading maritime and commercial bodies, internationally renowned Law firms and international organisations. These include the International Maritime Organisation, the British Insurance Law Association, the British Maritime Law Association, the Comité Maritime International, World Intellectual Property Organisation as well as maritime research centres at Dalian, Oslo, Rotterdam, Shanghai and Tromsø.



"If your intention is to complete your postgraduate legal studies in a place which is friendly under the supervision of excellent tutors who are experts in maritime law and will teach the subject from a practical perspective- don't look further! Swansea has it all!"

Hristiyana Hristova Bihlyumova (Bulgaria)
Completed LLM in International Maritime Law



The Institute is led by Director, Professor B Soyer, Professor of Commercial and Maritime Law. Members of the Institute include specialist full-time and visiting academics, actively engaged in research and with an established record of quality publications. Several of them have been actively involved in the debate on reforming numerous aspects of shipping and insurance law, both at the domestic and international levels. Some have also served on Working Groups of inter-governmental organisations and have provided legal advice to key NGOs and institutions.

The Institute also provides editorial support for the Journal of International Maritime Law (JIML) (www.lawtext.com), and Arbitration International. Ongoing research of the Institute includes related topics on charter-parties, bills of lading and other transport documents, World Trade Organization, international cargo conventions, marine insurance and P & I insurance, limitation of liability, ship arrest, maritime liens and international trade, commodity contracts and the use of intellectual property rights in international trade under our award winning IP Wales® initiative. For further information please visit regularly, www.swansea.ac.uk/law/istl, which is regularly updated with IISTL details of new developments.



"I can sum up my experience in Swansea in the following way: 'fantastic learning environment, excellent tutoring, friendly and supportive academic staff and a beautiful location'. I am convinced that the experience I obtained from Swansea and the reputation of the University will put me on the top of the pecking order when it comes to job hunting back home."

Liu Jing (China)
Completed LLM in International Trade Law



"I researched the Universities which offer LLM in International Maritime Law and quickly realised that Swansea University has an excellent reputation for the course. It is worth mentioning that the University is well-known for this sector and particularly the Institute of International Shipping and Trade has very strong links with the legal practice. I thoroughly benefited from my time in Swansea which culminated in my participation in the International Colloquium annually organised by the Institution. My fellow coursemates were of a huge amount of diversity of backgrounds and ages. The camaraderie was extremely strong and collectively working together in the library after lectures and seminars and organising various type of social activities really pulled us together. Such is very important in creating a conducive studying environment for the students."

Chong Kean Ng (Malaysia)
Completed LLM in International Maritime Law



OUTSTANDING STUDENT EXPERIENCE

Swansea University has a huge amount to offer postgraduate students. The campus is set in a glorious position on the main coastal road, directly opposite the wide sweeping Swansea Bay. The campus is nestled within beautiful parkland, just a couple of miles west of the City. The outstanding natural environment around Swansea affords many sporting opportunities. For example, sail in the Bay or at Margam Reservoir, row on the River Tawe. Surfing, windsurfing and canoeing conditions on the Gower beaches are simply excellent. Mountain biking and cycling are also popular across rugged hills for experts or flat cycle paths for beginners.

The University's sports centre is a short walk from the campus and includes the Uni-Gym- a fully-equipped fitness centre with over 80 stations, a multi-purpose sports hall, squash courts, climbing wall, physiotherapy/sports massage unit and meeting rooms.



Outdoor facilities include six tennis courts, rugby, football, lacrosse and cricket pitches. The Sports Village is home to an athletics track, two outdoor all-weather pitches and an indoor training centre for athletes, in addition to the Wales National Pool: home to a 50- metre swimming pool, and a 25-metre 'warm-up' pool. This Pool will be used for training purposes of athletes who will compete in 2012 London Olympics.



The Students' Union and Athletics Union are among the largest in the UK with nearly 120 clubs and societies providing a range of social, sporting and cultural activities. Whether you like football, rugby, music, drama or photography, or if you are interested in culture, politics or religion, you will find a club or society to suit your interests.

The popular Taliesin Arts Centre is at the heart of the campus. Open throughout the year, this lively venue hosts a broad programme of events including cinema screenings, an average of ten visiting exhibitions per year and a great variety of live performances, from dance and drama to jazz and world music. The Centre's Ceri Richards Art Gallery hosts a range of exhibitions throughout the year, presenting work by emerging and established artists alongside jewellery, cards and gifts to suit all tastes.

Swansea is a safe and friendly city with many local voluntary organisations providing countless social and cultural activities for international students. (Swansea is 6th safest city in the UK- source: Complete University Guide 2009). Living expenses, particularly accommodation costs, are much lower in Swansea than many other parts of the UK particularly London and the south-east of England. The table on page 13 demonstrates the low weekly rents that you can expect.



"Swansea University is an amazing multicultural university which provides its students the perfect environment to undertake academic studies. There is no doubt that the LLM in International Maritime Law is a challenging course but it is also an incredibly rewarding one. My Swansea experience enabled me to meet interesting people, who will, no doubt, succeed as professionals worldwide, and keeping in touch with them will undoubtedly create a global network of contacts. I should mention that the teaching staff are highly qualified and they have international reputation. They are very approachable and helpful. In a nutshell, I would say this was one of the most gratifying experiences of my life which helped me to grow and develop as a person as well as a professional."

Maria Laranga (Spain)
Completed LLM in International Maritime Law

CITY	Average weekly rent per room*
SWANSEA	£64 - £107
SOUTHAMPTON	£65 - £145
MANCHESTER	£73 - £138
EXETER	£73 - £179
LIVERPOOL	£81 - £111
EDINBURGH	£81 - £216
BIRMINGHAM	£77 - £160
BRISTOL	£58 - £162
KENT (CANTERBURY)	£83 - £137
LONDON**	£71 - £153

* Source: The Virgin Guide to British Universities

** This represents the prices in central London.

Students, who decide to stay in University postgraduate accommodation, are presented with a variety of options. Most postgraduate law students live either in Beck House (Tŷ Beck House), or Campus Residences or Hendrefoelan Student Village or university managed properties. Beck House has an excellent location in the heart of Uplands, with a wide range of shops, restaurants and schools located close by, and the campus within easy walking distance.



All flats have University wireless internet access, telephone and television points and laundry facilities. Approximately 1,200 students live on campus in a range of self-catered and part-catered accommodation with a choice of standard or en-suite study rooms. Kitchen facilities are shared and in standard rooms, bathroom facilities are also shared with other students. Hendrefoelan is set amongst mature woodland with open grassy areas, about two miles from the campus. A frequent bus service operates from the site to the University campus. University managed properties are located within a 2 mile radius of the campus. The accommodation is mainly in terraced houses, some of which may have been converted into flats. Most properties are shared between groups of 3 - 6 students. Priority is given to international students for University postgraduate accommodation but to guarantee a place in residence, students must confirm in writing (normally by the end of June) that they will definitely be studying in Swansea. Rents for postgraduate accommodation are updated annually.

Current information is available on the University web site: www.swansea.ac.uk/accommodation

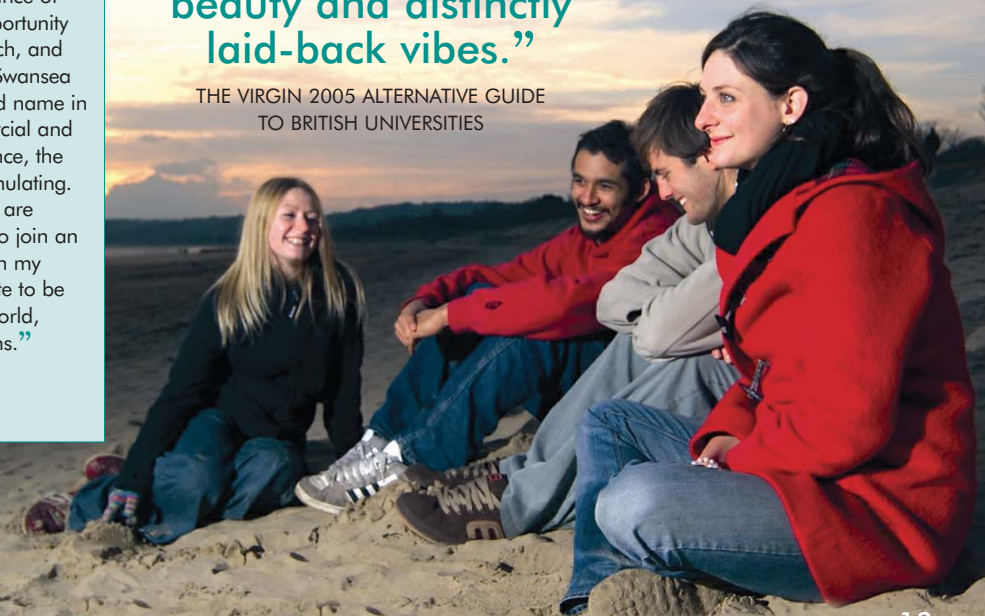


"As far as the University is concerned, it is a vibrant one within walking distance of the city centre. It provides the opportunity of scientific and academic research, and the reason I decided to apply to Swansea University pertains to its renowned name in the field of International Commercial and Maritime Law studies. From my personal experience, the course was interesting as well as intellectually stimulating. Swansea is a student focused city and the people are friendly and helpful. I was given the opportunity to join an international environment, where I expanded both my academic and social horizons. I was very fortunate to be able to socialise with students from all over the world, while I was introduced to their culture and customs."

Amalia Adamidou (Greece)
Completed LLM in International Maritime Law

"A place of exquisite beauty and distinctly laid-back vibes."

THE VIRGIN 2005 ALTERNATIVE GUIDE TO BRITISH UNIVERSITIES



EXCELLENT EMPLOYMENT PROSPECTS

The International Careers Adviser at Swansea runs weekly workshops for international students for example on how to improve career prospects, secure part-time work or work experience, and how to improve interview techniques.

Students with Swansea degrees are particularly well placed in the job market. Statistics confirm that 91% of Swansea graduates secure employment, or are in further study within six months of graduating. This percentage is regarded as one of the highest in the UK (Source: HESA data). The University's Careers Centre provides a range of services for postgraduate students to assist in making informed decisions about career paths and to offer support in their search for employment or further study opportunities.



Law students at the School of Law Career Fair

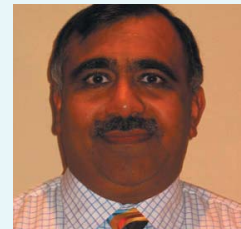
The School enjoys close local, national and international links with the legal profession. Each academic year, a Career Fair is held for our LLM students.

The Career Fair presents an opportunity for our LLM students to meet representatives from law firms that specialise in commercial, maritime, corporate, finance, and intellectual property, P & I Clubs, consultancy firms, as well as recruitment agencies. Using the contacts established during the Fair, several of our LLM students have managed over the years to get internships in international firms as well as securing their first jobs.

Postgraduate teaching staff include practising lawyers in leading London law firms with expertise in international trade, insurance and shipping law. As such, valuable networking and job opportunities are afforded to Swansea postgraduates. The Institute of International Shipping and Trade Law offers continuing professional development training seminars and lectures for a consortium of city law firms, BIMCO and BP. The former director of the International Oil Pollution Compensation Funds is a visiting fellow of the Institute and tutors on the School's LLM modules.

In order to enhance their employability prospects our LLM students are also given an opportunity to follow a range of study abroad Summer programmes. Under this scheme Swansea University links up with international partners from China, India, Gambia and the United States to enable our LLM students to study and learn in a different culture.

On these pages you can read the success stories of some of our recent graduates.



Ravinder Pasricha (Canada)

Completed LLM in International Maritime Law in 2007 and is currently working as Senior Surveyor at Marine Safety Unit of Transport Canada.

"During my time at Swansea Law School, I came to realise that the School's world-wide reputation in maritime law is well-deserved. Teaching methods employed are excellent and the teaching team has the ability of bringing out the best from students who are coming from all around the world. Lectures and seminars are supplemented by an impressive list of guest speakers. The emphasis at Swansea is on learning and not simply obtaining grades. The School's strength resides in the quality of its instructors. The range of materials available to supplement teaching is simply impressive."



David Williams (Ireland)

Completed LLM in International Maritime Law in 2010. Currently working as Claims Executive, Charles Taylor Consulting plc.

"The year I spent at Swansea has provided me not only with an excellent understanding of the principles of maritime law but has also prepared me for a career within the International trade/Maritime sector. This focus on an LLM student's future is both refreshing and beneficial. Attending Swansea's LLM course places a student in the midst of some of the industry's most well-known/respected commentators. The courses provided are well structured providing for both active class discussion as well as individual excellence. This coupled with the practical knowledge and enthusiasm of the staff provides a student with much more than the average LLM. I personally enjoyed and benefited from my time at Swansea, making both friends for life and contacts for the future."



Dr Jinlei Zhang (China)

Completed LLM in International Commercial and Maritime Law in 2004. She then completed her PhD at Swansea University (supervised by Professor B Soyer) and is currently a Lecturer at the Law School of Dalian Maritime University, China.

"The time I spent at Swansea University was absolutely fantastic. I enjoyed close relationships with my tutors and I benefitted immensely from their vast knowledge and the exceptional research facilities that the School offers. The School's research environment is very productive and students feel very much at home here. I not only obtained a good understanding of maritime law during my time at Swansea but also acquired essential skills that I am trying to pass on to my students at Dalian University now."



Adedoyin Adeloye (Nigeria)

Completed LLM in International Maritime Law in 2010 and is currently working as a lawyer at the Foundation Chambers in Lagos, Nigeria.

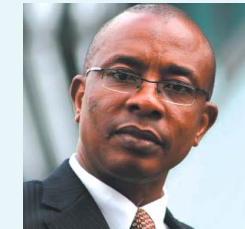
"On completion of my LLM, I undertook a brief internship with Ince & Co. London, before returning to Nigeria. The School's links with this firm was instrumental in securing this internship which proved to be most useful in my professional development. I had previous practical experience prior to coming to Swansea but the year I spent at Swansea was immensely useful in widening my horizons as well as understanding in maritime law. In my new role at the Foundation Chambers, I lead a team which deals with local and international clients, including terminal operators, major carriers' agents, P & I clubs and government agencies. My unit provides advice to our clients on varying issues involving cargo claims, arrest and release of vessels, ship mortgage, sale and charters, general average and limitation of liability."



Rajiv Bhatia (India)

Completed LLM in International Maritime Law in 2009 and is currently working in M/s Crossbridge Shipping Singapore Ltd as a Consultant.

"Having served on various commercial ships for 15 years, I knew that I needed excellence in the academic sense and practical qualifications to realise my dream of moving ashore and gaining a place in land-based maritime industry. I had a good practical background and even a law degree but I was aware of the intense competition and the need of obtaining an edge in the job market. At this juncture, I was advised to consider Swansea as a place of study in maritime law, NB Educational Consultants, guided me all along and provided assistance. I was informed of the international reputations of the lecturers at Swansea and their practical approach in their teaching. I had a brilliant experience here. From academic perspective the LLM offered me everything I could have hoped for. More importantly, I was taught how to think outside the box and as a result became more independent in my thinking. It is not an exaggeration to say that Swansea LLM has helped me immensely in fulfilling my desire of becoming a true Master of Laws."



Patrick Mbanefoh Odozi Esq (Nigeria)

Completed the LLM in International Commercial and Maritime Law in 2007. He is currently working as the Principal Solicitor and Head in the firm - LEXIS LEGAL. He is also the author of a book entitled "Duty of Good Faith and the Remedy of Avoidance in Marine Insurance Contracts" (2010) and the Editor-in-Chief of the Journal of Commercial and Maritime Law (2010).

"I came into Swansea in the night; it was quite cold for me. I knew no one but had the unrepentant attitude of asking questions about everything and I was amazed about the receptive and warm nature of all the people I approached to ask the way to Beck House student accommodation. Swansea is cool, reserved and serene for learning and research which is evident from the leap I have received afterwards in my career. That I was able to put together the research work for my dissertation into a major text book in Nigeria which has sold over 2000 copies in 8 months post publication, and am currently editing and publishing an International Practice Journal is an indication that Swansea has the potentialities of transformation in unimaginable ways. I am proud to identify with Swansea and Swansea University."



Pieter Neels (Belgium)

Pieter obtained his LLM in International Maritime Law in 2010. He published his LLM project on Rotterdam Rules as an article. Pieter is currently working as a lawyer at Kegels & Co Advocat. He is dealing with matters such as arrest of ships, cargo claims, insurance and transport in general.

"It was my goal to follow the best available programme for maritime law. Right from the start, it was already clear it would be a joyful year with new friends in an amiable city. The academic knowledge and qualifications offered in Swansea is a well valued asset in working life. And from time to time, nostalgic thoughts of that excellent year pop up while working in the office..."



Mehmet Hakan Tufekci (Turkey)

Completed LLM in International Maritime Law in 2006 and currently working as an attorney at law at Akinci Law Office in Istanbul, Turkey.

"The experience I had at the Law School has exceeded my expectations. A friendly atmosphere, beautiful surroundings, supportive staff, but most importantly the privilege of being the student of leading academics and practitioners - that's what you could expect from your Swansea experience."



Angeliki Kappatou (Greece)

Completed LLM in International Commercial and Maritime Law in 2004 and currently working at Holland and Knight (New York/USA).

"The LLM Programme that the Law School of the Swansea University has to offer constitutes the ideal place for one to begin his/her journey towards the real world of commercial and maritime law, as it combines all of those aspects that a Law firm is searching in respect of the successful lawyers of tomorrow, namely superior academic credentials, diversity, knowledge and teamwork. There is no doubt that the master's degree obtained at Swansea has played an important role in my development as a successful practitioner."

TAUGHT SPECIALIST LLM DEGREES

- LLM IN INTERNATIONAL MARITIME LAW
- LLM IN INTERNATIONAL COMMERCIAL LAW
- LLM IN INTERNATIONAL TRADE LAW
- LLM IN INTERNATIONAL COMMERCIAL AND MARITIME LAW
- LLM IN INTERNATIONAL BUSINESS LAW



All the LLM Programmes in the realm of business, commercial and maritime law have been developed with a view to providing students with a sound and relevant body of information and understanding, providing an effective springboard to a future career in legal practice or some other profession, or in education, industry, commerce, finance, shipping, international trade, insurance or arbitration.

The modules have been specifically designed to reflect the contemporary world of business, trade, commerce, and finance, and to equip students with the skills needed to play a significant role in meeting the professional needs of our times.

All LLM degrees are modular, with students required to accumulate 180 credits to graduate. In appropriate circumstances, a student may graduate with a merit or distinction. Each programme is divided into two parts: Part I consists of 4 taught modules each weighted at 30 credits. Part II is composed of two projects (LLM Research Projects) and is weighted at 60 credits.

The LLM Research Projects will customarily be researched and written up over the summer period following the successful completion of the taught modules and is designed to enable LLM students to develop their research skills.

All LLM modules are assessed by a combination of coursework and examination, with an equal weighting of 50% normally given to each component in the final total assessment. The four taught modules are drawn from the lists set out opposite. Module choices will depend on the precise specialist degree the student wishes to study for. The module lists for the five specialist LLM degrees are as follows:



“Studying in Swansea has been one of the greatest experiences in my life! The course is well-structured and it provides a wide range of modules which are interconnected. The classes are taught by professional and experienced lecturers, who are the experts in their fields. All lecturers have international reputations. This is the place to be if you are serious about your future!”

Yidan Wang (China)
Completed LLM in International Maritime Law

LLM in International Maritime Law

- Admiralty Law (*)
- Charterparties: Law and Practice (*)
- Carriage of Goods by Sea, Land and Air (*)
- Law of the Sea (*)
- Marine Insurance Law (*)
- E-Commerce
- International Litigation and Arbitration
- International Trade Law

LLM in International Commercial Law

- Company Law in a Comparative Context (*)
- European Competition Law (*)
- International Intellectual Property Law (*)
- Law, Globalisation and Commerce (*)
- E-Commerce
- International Litigation and Arbitration
- Law and Practice in International Banking and Commercial Payments
- Law of Intellectual Assets Management and Transactions
- Transnational Credit and Security
- World Trade Law

LLM in International Trade Law

- International Trade Law (*)
- Law and Practice in International Banking and Commercial Payments (*)
- World Trade Law (*)
- Charterparties: Law and Practice
- E-Commerce
- International Litigation and Arbitration
- Marine Insurance Law

At least two of your options must be drawn from the modules which are asterisked (*).



“The LLM Programme expanded my horizons and enabled me to understand main principles which international commerce is built upon. I have no doubt that the skills I acquired whilst completing this degree will have a positive impact on my employability prospects.”

Mohammad Sa'ad AL Ryalat (Jordan)
Completed LLM in International Commercial Law

LLM in International Commercial and Maritime Law

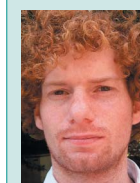
- Any 4 modules from the mentioned lists, subject to:-
- At least one module must be taken from the asterisked modules in the International Maritime list
- At least one module must be taken from the asterisked modules in the International Commercial Law or International Trade Law lists.

LLM in International Business Law

- Company Law in a Comparative Context (*)
- International Intellectual Property Law (*)
- Law of Intellectual Assets Management and Transactions (*)
- Transnational Credit and Security (*)
- E-Commerce
- European Competition Law
- International Litigation and Arbitration

At least two of your options must be drawn from the modules which are asterisked (*).

Outline descriptions of the modules taught at LLM Programmes are to be found elsewhere in the brochure (pp18-20). The list of modules indicated will be offered in any academic year subject to student demand and school resources. With regard to the LLM Research Projects required under Part II of each LLM Programme, students are required to engage with their tutors during the summer and undertake research in areas which are related to the student's degree programme.



“I decided to come to Swansea to study the LLM essentially due to the reputation of the School and LLM programme. The course has offered professional teaching through skilled academics and practitioners who have been eager to share their experience. The campus is situated on the Welsh coast close to sandy beaches which is a great area for non-academic activities. The social environment here is special and friendly. Upon completion of the course I feel I have developed as a person and taken a huge step towards a rewarding career within shipping and maritime law.”

Kristoffer Snaprud Johannessen (Norway)
Completed LLM in International Maritime Law

INDIVIDUAL MODULES AVAILABLE FOR LLM PROGRAMMES



"Here not only you get the opportunity to study in a truly academic and challenging atmosphere but as an international student you are always sure of a warm welcome from faculty and staff as well as fellow students. I would definitely recommend this programme to all those who consider furthering their studies in the area of Commercial & Maritime Law, especially international students, whose diversity in terms of both nationality and academic background, is much appreciated in this remarkable university."

Mustafa C. Tan (Turkey)
Completed LLM in International Commercial and Maritime Law



"When I decided to study Maritime Law at postgraduate level, the first question was which University I should apply for. Partners of important maritime law firm in Italy suggested that I should look for an innovative and ambitious University with a high quality academic staff. Swansea was my winning choice. I spent a challenging and demanding year but at the end, I got more than what I expected."

Camillo Melotti Caccia (Italy)
Completed LLM in International Maritime Law



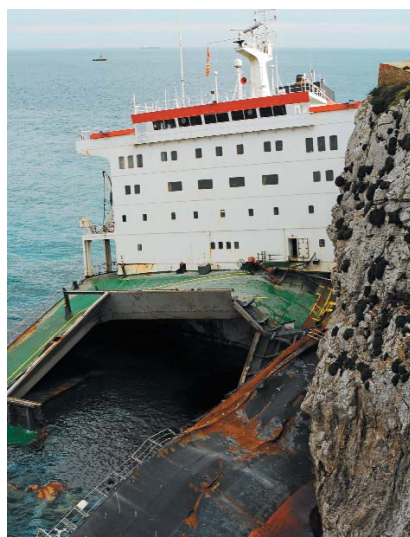
"The LLM in International Maritime Law is a truly international course, no matter what jurisdiction you come from or where are you going to practice, the knowledge you acquire here is essential."

Gianna Medaglia (Panama)
Completed LLM in International Maritime Law

Admiralty Law

This course concerns a practical aspect of maritime law which was developed by the Admiralty Court in England and which has influenced many countries in the world. The aim of the course is to provide students with a practical and critical knowledge of those aspects of maritime law relating to the running of the ship. The course is in two parts. Part one deals with substantive areas of maritime law such as the law of collisions, harbour law, pilotage, oil pollution, salvage, general average, carriage of passengers and limitation of liability. Part two focuses on enforcement of maritime claims through the practice and procedure of the Admiralty Court, including arrest, jurisdiction and maritime liens.

Module Directors: Professor Barış Soyer and Dr Richard Caddell



Carriage of Goods by Sea, Land and Air

Goods are carried all over the world by different modes of transport - by land, rail, sea and air. This module analyses the issues that arise in relation to each form of transportation. In most cases, cargo is carried purely by one mode of transport (unimodal transport). For example, bulk cargoes are generally carried solely by sea and such carriage is subject to compulsory international regimes which are intended to regulate that mode of carriage i.e. the Hague, Hague-Visby and Hamburg Rules. Similarly, high value cargoes and pharmaceuticals are generally carried solely by air and are compulsorily subject to the Warsaw/Montreal Conventions. However, it is also common for goods to be carried in the one receptacle but by different modes of transport e.g. one container may be carried by road, rail, sea and air (multimodal transport). Such form of carriage gives rise to particular difficulties since whilst separate conventions apply to individual legs of the carriage, there is no one international convention which applies to the whole of such carriage. This module is designed to analyse the different features and characteristics of the different forms of contract of carriage that are currently used in relation to both unimodal and multi modal transport, the problems that may be faced when cargo carried under such contracts is lost or damaged and the part played by the current international regimes i.e. the Hague, Hague-Visby and Hamburg Rules in relation to carriage by sea, the Warsaw/Montreal Conventions in relation to carriage by

air, CMR in relation to carriage by road and CIM/COTIF in relation to carriage by rail. The module also considers the impact of future developments such as the possible implementation of the Rotterdam Rules which are intended to regulate all modes of transport in the same manner. Finally, this module examines a number of contemporary difficulties which arise both in relation to the nature of bailment contracts and the practicalities of cargo claims.

Module Directors: Professor Richard Williams, Dr Theodora Nikaki and Dr George Leloudas

Charterparties: Law and Practice

A charter party is a contract for the use of a vessel either for one voyage or for a period of time. It is the means by which parties who are not shipowners but who nevertheless need the use of a vessel in order to satisfy the commercial commitments that they have to other parties, are able to obtain the commercial control of a vessel for that purpose. Therefore, the charter party is the backbone of seaborne commercial trading. Unlike other contracts for the carriage of goods, charter parties are not subject to any form of international regulation and the principle of freedom of contract applies to full effect. Therefore, this module examines the differences between various forms of charter parties, the respective rights and duties of shipowners and charterers, the relationship between charter parties and other contracts such as bills of lading, sea waybills etc, and the manner in which specific charter party terms can affect the allocation of risk between a shipowner and a charterer.

Module Director: Professor Richard Williams



Company Law in a Comparative Context

Each jurisdiction requires a strong company law to promote and manage the competing interests of stakeholders affected by the concept of limited liability. With recent changes to the way companies in England & Wales are regulated, this module seeks to explore the underlying purpose for company regulation in the modern business environment and to consider the way that this area of law increasingly transcends jurisdictions as a result of international trade and the breaking down of barriers by virtue of advances in technology. This module will consider these jurisdictional issues by reference to regulation as in the EU and US, identifying common issues and convergence, and where there is divergence, how the basic problems are addressed and what this means for the company concerned and its stakeholders. This module will provide a strong platform for students developing enterprises in this jurisdiction and for students intending to utilise their knowledge in the global market.

Module Director: Dr Shuangge Wen

E-Commerce

The course examines the expanding role of e-commerce and the associated problems; how an effective legal framework can be established and effective encryption systems developed.

The course identifies and discusses the conflict between e-commerce and governmental control, developing a comparative approach to the issue and looking at the approaches adopted in countries such as Singapore and the USA. Also examined is the application of existing legal principles to e-commerce, again adopting a comparative approach, analysing existing legal adaptations, their appropriateness and how such adaptations might be improved in the future.

Module Directors: Andrew Beale, O.B.E., Dr Patrick Bishop and Dr Jon Howden-Evans



European Competition Law

This module is concerned with European competition law. It will examine the legal control of market power, restrictive agreements, and mergers. The interplay between intellectual property and competition regimes will also be analysed. The law will be placed in its economic, historical, and international context.

Module Directors: Professor Jukka Snell and Dr Bebhinn Donnelly-Lazarov

International Intellectual Property Law

This module concentrates on European and international law aspects of intellectual property. It examines the various existing and proposed international and Community law instruments relating to intellectual property, such as the TRIPS agreement; Paris, Berne, Rome and Madrid Conventions, European Patents Convention, Biotechnology Directive, Community Patent Regulation, Software and Database Directives, Directive on Copyright in Information Society, and Trademark Directive and Regulation. Emphasis is placed on the intellectual property work of the World Trade Organization (WTO), World Intellectual Property Organization (WIPO), World Health Organization (WHO), and International Union for the Protection of New Varieties of Plants (UPOV).

Module Director: Andrew Beale O.B.E.

International Litigation and Arbitration

International disputes that cannot be otherwise resolved are customarily referred to national courts and arbitration. National courts may assume jurisdiction over international disputes and a global network of arbitration organisations and international institutions exist to address references to arbitration. The module examines the judicial and arbitration structures which exist to resolve international disputes, the special international law that has been developed and the associated questions of the private international law.

Module Directors: Dr George Leloudas and Dr Shuangge Wen



International Trade Law

The module analyses the structure and operation of international sale contracts, especially CIF, CIP and FOB contracts, focusing on the respective obligations and rights of seller and buyers, questions of title and risk, and remedies for breach. Also examined are INCOTERMS promulgated by the International Chamber of Commerce (ICC), international sales under the Vienna Convention 1980 and commodity trading contracts. Emphasis is given to an examination of the relevant transport documentation, especially the bill of lading, the insurance of goods in transit, and the different legal mechanisms by which the law protects international buyers.

Module Director: Professor Andrew Tettenborn

Law and Practice in International Banking and Commercial Payments

The course examines the different payment mechanisms that may be adopted by parties to discharge the payment obligations of international buyers of goods and services. These include cash payments, bills of exchange systems and documentary credits. The methods that may be adopted to guarantee payment are also examined, for example, surety, promissory notes and performance bonds. The different payment mechanisms are analysed and compared, their fundamental characteristics identified and their advantages and disadvantages considered. Also analysed are the various ways the international banking system may be integrated into international payments.

Module Director: Professor Andrew Tettenborn



Law, Globalisation and Commerce

Today, commerce happens in a global economy under law. On the basis of certain (public) international law underpinnings a specific international legal regime for global commerce is emerging. The module examines selected topics of that regime, i.e. institutions and principles of international commercial law and arbitration, the regime of international investments incl. ICSID, UNCITRAL rules on international commerce, and problems of international commercial arbitration.

Module Director: Professor Volker Röben



"Having completed my undergraduate law degree at Swansea, I decided to undertake an LLM because the course looked really interesting. I was able to choose from a wide selection of modules and found my chosen subjects to be very enjoyable. The course is interesting and challenging and I would strongly recommend it to anyone interested in learning more about commercial and/or maritime law. The lecturers are very approachable and run stimulating lectures and seminars. I think this course has been well worth my time and effort and a very enjoyable and useful experience."

David Palmer (United Kingdom)
Completed LLM in International Commercial and Maritime Law



"Prior to arriving at Swansea, I conducted an intensive research on international LLM programmes in Maritime Law and I came to the conclusion that Swansea would be the ideal place for me due to its international reputation and calibre of its teaching staff. Having spent a year here, I am glad to say that my choice was the right one. It has been a very interesting and rewarding experience for me. I can recommend the LLM programme for those who want to build a career in international maritime and shipping law without any reservation."

Selin Begum Ozturk (Turkey)
LLM in International Maritime Law



"Studying at Swansea University has been a pleasant experience for me. Everybody here is very helpful. The main strength in the LLM Programme is the variety of options available. The academic environment is excellent. I would recommend the LLM in Maritime and Commercial Law at Swansea University to any prospective students with absolutely no reservations."

Eunice Dada (Nigeria)
Completed LLM in International Commercial and Maritime Law



“Whilst studying at Swansea, I discovered how friendly and professional the teaching staff are. Professors always patiently answered any question that I had during and after the class. There is a very effective personal tutor system in place and academics are very approachable and happy to offer assistance both on academic and other matters. The LLM cohort comes from all around the world creating a very cosmopolitan and interesting environment. I really enjoyed my time here at Swansea.”

Chenzhou Zhang (PR China)
LLM in International Maritime Law



“The vast majority of the lecturers here are recognised worldwide as leading authorities in their respective fields and many are qualified solicitors and barristers. They are very approachable and treat LLM students as “colleagues” rather than students. It is great that classes are relatively small, allowing greater student participation and discussion. It has to be stressed that there is an excellent library here with large study areas and unlimited access to a wide range of electronic resources. Swansea was the right choice for me and I am sure it will be for you as well.”

Eleni Zitouni (Greece)
Completed LLM in International Maritime Law



“I decided to come to Swansea University as I was told in the company I was working for that the School had an excellent academic reputation in international trade and shipping sectors. Having spent 12 great months in Swansea, I am happy to report that the reputation is well-justified. I am going back as a person who knows a lot about international trade, commercial and shipping law.”

Stefan Scholz (Germany)
Completed LLM in International Commercial and Maritime Law

Law of Intellectual Assets Management & Transactions

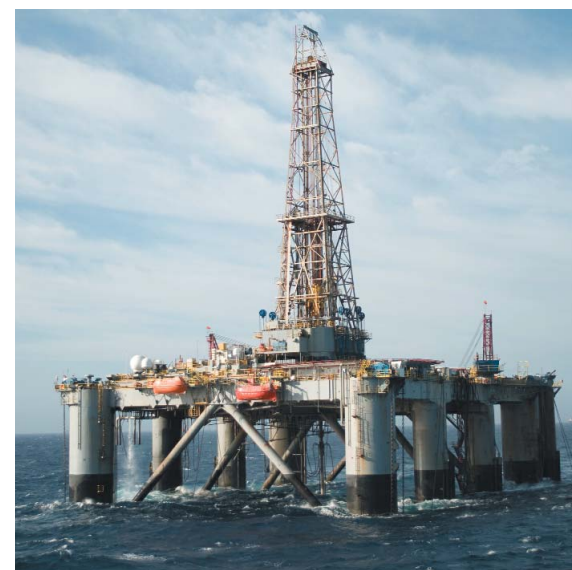
It is estimated that 70% of a typical company's value today lies in its intangible assets. Yet evidence would suggest that companies do not readily understand the nature of these legal assets nor manage them in an effective commercial manner, such that they are sometimes described as the ‘hidden assets’ of a business looking to operate in today's global market place. This module explores the legal nature of these assets from an international perspective; the changing innovation environment within which they need to be managed within a global context; the different ways in which the law may be used to protect product/service differentiation from business competitors and the application of the criminal law to on-line trading within the global market place. This module will give students the tools and skills they will need to draft and analyse the various transactions used within a modern economy for technology transfer and franchising. The module will also deal with the valuation of intangible assets and issues of their enforcement. This module will help raise levels of Intellectual Assets awareness amongst researchers operating in the fields of Science, Technology, Engineering & Mathematics (STEM).

Module Director: Andrew Beale O.B.E.

Law of The Sea

The sea constitutes two-thirds of the entire planet and is of fundamental importance to human activity, sustaining life, providing commerce and navigational routes and a substantial proportion of our natural resources. This module examines the global and regional governance of the seas and addresses a number of key issues in the formulation and appreciation of marine policy, including the development of international and European rules; rights and duties of states over maritime areas and resources, as well as common areas; illegal conduct and the enforcement of maritime law; and the emerging importance of marine environmental issues, not least in the context of highly newsworthy events such as sea-level rise and the whaling debate.

Module Director: Dr Richard Caddell



Marine Insurance Law

The module provides an analysis of the foundations and fundamental concepts relating to the insurance of ships, cargoes and freight. The law considered is predominantly English law, which is of international relevance. It represents the basis of the law followed in Commonwealth countries, the United States and in many other countries. The insurance forms and documents used on the London marine insurance market are also adopted in a large number of overseas insurance markets. Throughout the course the respective positions of assureds and underwriters are analysed, as also are the special features of the marine insurance contract, the risks covered and the concepts of causation, indemnity, subrogation, co-insurance and reinsurance.

Module Director: Professor Barış Soyer



Transnational Credit & Security

The availability of credit is a vital stimulant for entrepreneurial activities both within and across jurisdictions and most modern day businesses rely on credit to finance their operations. This module focuses on the legal framework and policy concerns that underpin the provision of credit with particular emphasis on the legal regulation of secured credit arrangements both in the context of English law and from an international perspective. The module will inquire into the nature and functions of credit and security. The module will also examine different types of secured credit arrangements and the legal principles governing their creation and operation. The module will also explore the manner in which the law seeks to regulate and balance the competing interests of different categories of creditors, debtors and other parties implicated in or affected by credit arrangements.

Module Director: Dr Andrew Iwobi

World Trade Law

The option focuses on the law and practice of the World Trade Organization. The WTO is a new international institution, yet the early years of its case law has been described as the most important international jurisprudence in the history of mankind. The course covers the economic theories which explain the benefits of international trade. It then proceeds to examine the key agreements which seek to remove barriers to trade in the areas of goods, services and intellectual property rights.

Module Director: Dr Arwel Davies

SPECIALIST TEAM



Professor Barış Soyer BA (Ankara), LL.M, PhD (Southampton)
Professor of Commercial and Maritime Law
Director of the Institute of International Shipping and Trade Law
Director of Taught Masters Programmes

Professor Soyer was appointed as a Lecturer at the School of Law, Swansea University in 2001 and was promoted to Senior Lecturer in 2004, Reader in 2006 and Chair in 2009. He is currently the Director of the Institute of International Shipping and Trade Law - an internationally renowned research centre. He was previously a Lecturer at the University of Exeter. His postgraduate education was in the University of Southampton from where he obtained his PhD degree in 2000. Whilst at Southampton he was also a part-time Lecturer and Tutor. His principal research interest is in the field of insurance, particularly marine insurance, but his interests extend broadly throughout maritime and commercial law.

He is the author of *Warranties in Marine Insurance* published by Routledge Publishing (2001). His book was the joint winner of the Cavendish Book Prize 2001 and was awarded the British Insurance Law Association Charitable Trust Book Prize in 2002 for the best contribution to insurance literature. A new edition of this book was published in 2006. Professor Soyer has published extensively in the main journals in his field, such as the *Lloyd's Maritime and Commercial Law Quarterly*, *Journal of Business Law*, *Journal of Contract Law*, *Journal of International Maritime Law* and *Journal of Maritime Law and Commerce and Torts Law Journal*. He is editor and contributor to *Reforming Marine and Commercial Insurance Law* published in 2008 by Informa and contributed to leading texts in the field such as *Marine Insurance: The Law in Transition* (2006), *Liability Regimes in Contemporary Maritime Law* (2007) and *Legal Issues relating to Time Charterparties* (2008).

His teaching experience extends to the under- and postgraduate levels, including postgraduate teaching of Carriage of Goods by Sea, Transnational Commercial Law, Marine Insurance and Admiralty Law. He is one of the editors of the *Journal of International Maritime Law* and is also on the editorial board of *Shipping and Trade Law and Baltic Maritime Law Quarterly*. He currently teaches Admiralty Law, Charterparties: Law and Practice and Marine Insurance Law on the LLM Programme and involved in the delivery of professional courses offered by the Institute of International Shipping and Trade Law.



Dr Theodora Nikaki LLB (Aristotle), LL.M (Aristotle, Tulane), PhD (Southampton),
Attorney at Law (Greece)
Deputy Director of Taught Masters Programmes

Dr Nikaki joined the School of Law in 2005 as a Lecturer. She is a graduate of the Aristotle University of Thessalonica (LLB and LL.M in Commercial and Economic law with distinction). Having worked in private practice for several years, she also obtained an LL.M degree in Admiralty and Maritime Law from Tulane Law School (New Orleans, USA) in 2001 with distinction. She then went to work in a maritime law firm in the United States before undertaking her PhD degree in Carriage of Goods by Sea and Transport Law in the UK. Her principal research interest is in the field of carriage of goods by sea, but her interests extend to private international law and multimodal transport. She is an active researcher and has published in several significant journals such as *The Journal of Business Law*, *the Journal of Maritime Law and Commerce* and *Tulane Maritime Law Journal*.

She has taught courses at both undergraduate and postgraduate levels, such as Charterparties and Carriage of Goods by Sea, Commercial Law, E-Commerce, International Trade, International Litigation and Arbitration, Marine Cargo Claims, and Private International Law. She is also part of the team that delivers the professional courses offered by the Institute of the International Shipping and Trade Law. She is currently the Deputy Director of Taught Masters Schemes, where she teaches Carriage of Goods by Sea, Land and Air (Module Director) and Charterparties: Law and Practice.



Andrew Beale O.B.E. LLB (Bristol), M.Phil (Wales), P.G.C.E., G.M.Inst.L.Ex
Director of LLM in International Business Law

Andrew Beale is Deputy Head of School and the Director of IP Wales®. Previously a consultant to the World Intellectual Property Organisation (Geneva based specialist agency of the United Nations), Andrew now works as an IP Consultant with Consult Capital. Formerly Head of Law at the Swansea Metropolitan University, Andrew piloted the successful *Swansea IPR Initiative*. This was the forerunner to our Law School's award winning IP Wales® project, an all Wales Intellectual Property Initiative funded by the European Union and Welsh Government. Andrew joined the Law School at Swansea University as a senior member of staff in 2004 where he has continued to develop his interest in the management of intellectual assets within knowledge economies. Andrew achieved national recognition for ‘services to intellectual property and business in Wales’ with the award of an O.B.E. under the Queen's Birthday Honours List 2009.

**Dr Patrick Bishop LLB, PhD (Wales)**

Dr Bishop graduated from the University of Wales Swansea in 2001 with first class honours. He remained at Swansea to undertake doctoral research and was awarded a PhD in 2006 for his thesis which considered the role of the preventative principle in shaping the substance and development of the law in the field of noise pollution. In 2004 he was appointed as a tutor at the School of Law in Swansea, a position retained until 2007, when he was appointed as a Lecturer in Law. Dr Bishop's primary research interest is environmental law with a particular emphasis on regulatory enforcement and the role of private law in the protection of the environment. His publications reflect his interest in environmental law and include several articles published in significant journals including the *Conveyancer and Property Lawyer*, *Environmental Law Review*, *Journal of Environmental Law* and the *Northern Ireland Legal Quarterly*. In addition to environmental law, Dr Bishop has a developing interest in the law relating to information technology and the internet. He is jointly responsible for the delivery of the E-Commerce module on the LLM programme.

**Dr Richard Caddell LLB, LLM, PhD (Cardiff), ACI Arb**

Dr Richard Caddell was appointed to a Lectureship in Law at Swansea University in September 2007. He studied at Cardiff University, gaining an LLB in Law and Spanish (1999), an LLM in Commercial Law (2001) awarded with Distinction, both overall and also for the thesis, and a PhD on the law of the sea (2010). Richard's main areas of expertise are the law of the sea, international environmental law and maritime law, with a particular focus on fisheries, shipping regulation and the conservation of marine biodiversity at the Welsh, UK, EU and international levels. He has been engaged as a legal consultant on dolphin conservation issues for leading NGOs and has served on a number of UNEP advisory bodies and working groups. Richard is currently preparing a monograph on the conservation of cetaceans (whales, dolphins and porpoises) and has published a number of articles and lectured widely on the law of the sea and international and EU marine environmental law.

**Dr Arwel Davies LLB, LLM (Wales), PhD (Nottingham)**

Dr Davies' research interests are in the area of international economic law with particular focus on the law and practice of the World Trade Organization. He is a co-author of a leading text and materials volume on WTO law published by Hart. His professional affiliations include the Society of International Economic Law and the Society of Legal Scholars.

**Peter Macdonald-Eggers Q.C. LLB (Syd), LLM (Cantab), Visiting Fellow**

Peter is a barrister practising at 7 King's Bench Walk. He specialises in all aspects of commercial law, with particular emphasis on insurance and reinsurance. His expertise extends to all types of insurance and reinsurance, including marine risks, energy and war and political risks, as well as international trade, shipping and transport, international investment and projects. Peter is co-author of *Good Faith and Insurance Contracts*, 2nd edn (LLP, 2004) and is a Contributing Editor of *Chitty on Contracts*.

**Dr Jon Howden-Evans LLB (Aberystwyth), PhD (Southampton), Solicitor of the Supreme Court England & Wales**

Dr Howden-Evans joined the School of Law in 2004. Jon qualified in 1997 having trained with Eversheds and went on to complete his PhD examining the UK Competition Act 1998, whilst practising as a Senior Solicitor with Morgan Cole. He has wide ranging experience of all aspects of business law including UK and EC Competition Law, State aid, procurement work and commercial agreements. He has advised a variety of clients including major UK plc's and public bodies. Jon's principal research interest is in competition law, with particular reference to the impact of e-commerce, but his interests extend to comparative business laws, corporate controls and ethics in commerce. He has previously taught at Cardiff University, as well as devising training programmes for clients and speaking at business conferences. Jon, who is also an external examiner for the Solicitors Regulation Authority, received the Swansea University Distinguished Teaching Award in 2010.

**Dr Andrew Ubaka Iwobi LLB (Jos), B.L (Nigerian Law School), PhD (Birmingham)**

Dr Iwobi has lectured in the School of Law since 2004. He is a graduate of the University of Jos, Nigeria. After being called to the Nigerian Bar, he completed his doctoral studies at the University of Birmingham and then taught in the Faculty of Law, University of Nigeria for several years. His main specialism lies in the field of Property Law and he currently teaches Transnational Credit and Security Law on the LLM programmes and Equity and Trusts on the LLB programme.

**Måns Jacobsson Visiting Fellow**

Mr Måns Jacobsson, formerly Director of the International Oil Pollution Compensation Funds and President of Division of the Stockholm Court of Appeal (1985-2006), is a Visiting Fellow of the Institute of International Shipping and Trade Law and the School. After studies at Princeton University (USA) he studied law at Lund University in Sweden, graduating in 1964. Måns Jacobsson served as an arbitrator and has published (together with two co-authors) a book in patent law, nuclear law, maritime law, law of torts and treaty law. Mr Jacobsson shares his vast expertise in the field by taking part in the delivery of relevant LLM modules. He has also served as a judge at district court and appellate court level 1964-1970. He then worked as legal advisor in the department for international affairs of the Swedish Ministry of Justice 1970-1981. He was Assistant Under-Secretary and Head of that Department 1982-1984. During his time in the Ministry he prepared legislation in various subjects, mainly in the field of civil and transport law, and represented Sweden in negotiations in a number of intergovernmental organisations.

**Dr Bebhinn Donnelly-Lazarov LLB (Dublin), Barrister (Middle Temple), PhD (Birmingham)**

Dr Donnelly-Lazarov is a Senior Lecturer who joined the School of Law in 2002. Her particular areas of interest lie in jurisprudence and criminal law. She is the author of *A Natural Law Approach to Normativity* (Ashgate, 2007) and has published many journal articles exploring issues of Natural Law, legal philosophy more generally, and theoretical dimensions of criminal law. Recent research projects have extended beyond these interests to include an examination of the consistency of the concept of competition at European Union level. She lectures on the European Competition Law module at LLM level.

**Dr George Leloudas BCL (Athens), LLM (Bristol, McGill), PhD (Trinity Hall, Cambridge), Solicitor of the Supreme Court England & Wales, Attorney at Law (Athens, Greece)**

Dr Leloudas joined the School of Law in 2011 as a Lecturer. He is a graduate of the National and Kapodistrian University of Athens. He holds LLM degrees in Commercial Law from the University of Bristol (England, 2002) and in Air and Space Law from the Institute of Air and Space Law of McGill University (Montreal, Canada, 2003). He also completed his PhD degree in air law with emphasis on liability and insurance at Trinity Hall, Cambridge University in 2009.

Before joining the School Dr Leloudas worked as a Solicitor in a leading aviation law firm in London for several years where he advised on aerospace liability and airlines' regulatory matters. He was also an assistant to the legal counsel of the International Union of Aviation Insurers (IUAL) providing support in relation to the replacement of the Rome Convention on Surface Damage. Dr Leloudas is an instructor at the Training and Development Institute of the International Air Transport Association (IATA) where he teaches international air law for lawyers and legal professionals and law of aviation insurance.

His principal research interest is the carriage of passengers and goods by air, but his interests extend to multimodal transport, insurance law and tort law. He is an active researcher and his doctoral thesis, *Risk and Liability in Air Law*, was published by Informa in September 2009. He is the course coordinator of Litigation and Arbitration and Carriage of Goods by Sea, Land and Air.

**Professor Dennis Patterson J.D., PhD (Buffalo), Member of the New York Bar, Professor of Jurisprudence and International Trade**

Professor Dennis Patterson is an internationally recognised scholar in legal philosophy, commercial law and international trade. Together with Ari Afilalo, he is the author of *The New Global Trading Order* (Cambridge University Press, 2008). Professor Patterson's 1996 work, *Law and Truth* (Oxford University Press, 1996) has been translated into German and Italian. His work has appeared in leading academic journals, including *Oxford Journal of Legal Studies*, *Columbia University Law Review*, and the *Modern Law Review*. Professor Patterson also holds the position of Distinguished Professor of Law and Philosophy at Rutgers University School of Law, New Jersey, USA.

**Simon Rainey Q.C. MA Hons (Cantab), Lic Sp Dr Eur (Brussels), Visiting Fellow**

Simon Rainey is a barrister practising at and joint head of Quadrant Chambers. His principal areas of practice are international commerce, embracing particularly shipping, commodities, insurance and the carriage and sale of goods, and energy. He is frequently appointed as arbitrator (LCIA, ICC, LMAA and ad hoc, sitting both sole and as co-arbitrator) and also sits as a Recorder and as a Deputy High Court Judge in the Queen's Bench Division. He has been cited for many years as a leading Q.C. in the areas of Shipping, Commodities, Commercial Litigation and Dispute Resolution, International Arbitration, Energy and Natural Resources, and Insurance and Reinsurance and Professional Negligence by Legal 500 and Chambers and Partners. He is the author of *The Law of Tug and Tow and Offshore Contracts* (2nd Edn, Informa, 2004; third edition to be renamed *The Law of Offshore Contracts* currently in preparation).

**Professor Volker Röben Assessor, Dr. iur. Habil. (Heidelberg), LLM (College of Europe), LLM (UC Berkeley), Professor of Public International Law**

Professor Röben is a graduate of the Universities of Kiel, Heidelberg and Berkeley and of the College of Europe, and was appointed Professor of Public International Law at the School of Law, Swansea in 2007. Previously he was Senior Research Fellow at the Max Planck Institute for International Law and Comparative Law, Heidelberg and a lecturer at the University of Heidelberg.

He has taught inter alia at the University of Chicago School of Law and the University of West Virginia College of Law. He was clerk to Justice Di Fabio of the Federal Constitutional Court of Germany and a member of the Advisory Committee to the German Federal Parliament which produced and drafted the International Missions of Armed Forces Act 2005. He is author of *Aussenverfassungsrecht* (External constitutional law of the open State) and (co-)editor of *Developments in International Law - Alternatives to Treaty Making* (2005), *Legitimacy in International Law* (2007), and *Theorising the Global Legal Order* (2009). His journal publications are extensive and reflect his interests in international commercial and public international law, European Union law and (comparative) constitutional law.

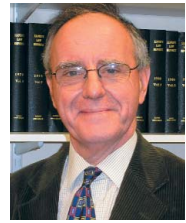
**Professor Jukka Snell Oikeust. kand. (Helsinki); LLM, PhD (London), Professor of European Law**

Professor Snell is a graduate of the University of Helsinki and King's College London, where he was Lord Slynne Foundation Fellow and KCLA Scholar. He joined the School of Law at Swansea in 2000, where he lectures in European Law and Competition Law. He was awarded a personal chair in 2005. He has also taught at the Civil Service College, Europäische Rechtsakademie, Kings College London, Queen Mary University of London, University of Helsinki and University of Leicester. His primary research interests lie in the area of European Economic Law.



Professor Andrew Tettenborn MA, LLB, (Cantab), Barrister
Professor of Commercial Law

Professor Tettenborn joined the School in 2010, having previously taught full-time at Nottingham, Cambridge and Exeter universities and held visiting positions at (among others) Melbourne, Connecticut and Case Western. He is a general commercial lawyer with wide interests; in his teaching at Swansea he specialises in trade, banking and payments, and admiralty. Among his appointments are included editorship of *Marsden's Collisions at Sea* and a place on the editorial board of *Lloyd's Maritime & Commercial Law Quarterly*; in addition he writes extensively in private law and is on the specialist team of *Clerk & Lindsell on Torts*. In most years Professor Tettenborn also teaches guest courses at Cambridge, Geneva or both.



Professor D. Rhidian Thomas LLB (Wales), MA (Sheffield), ACI Arb
Emeritus Professor of Maritime Law

Professor Thomas is a graduate of the Universities of Wales and Sheffield, and was appointed Professor of Maritime Law and was awarded professorship in 2010. Previously he was Professor of Law at the University of East Anglia and has taught at the National University of Singapore, University of Windsor, Canada, the University of Gothenberg, Sweden, and at the IMO International Maritime Law Institute in Malta. From 1989 to 1999 he was adjunct Professor of Law on the University of Detroit Mercy London Law Programme and Director of the Lloyd's List Shipping Law Seminars. He was a member of the Departmental Advisory Committee on Arbitration Law which produced and drafted the Arbitration Act 1996; and is a member of an Advisory Committee which advises the Department of Transport on the implementation of international conventions on shipping. He is a member of the British Maritime Law Association and Chairman of the Subcommittee on Mortgages and Ship Arrest. He is also a member of the Chartered Institute of Arbitrators and the British Insurance Law Association. He is author of *Maritime Liens* (vol.14 British Shipping Laws) (1980); *Law and Practice of Appeals from Arbitration Awards* (1994); *Default Powers of Arbitrators* (1996). He is editor and contributor to *Modern Law of Marine Insurance*, Volume 1 (1996), and Volume 2 (2002) and Volume 3 (2009), *Marine Insurance: The Law in Transition* (2006), *Liability Regimes in Contemporary Maritime Law* (2007), Ed., *Legal Issues Relating to Time Charterparties*, 2008, *The Evolving Law and Practice of Voyage Charterparties*, (2009), *New Convention for the Carriage of Goods by Sea: The Rotterdam Rules* (2009), *The Carriage Of Goods By Sea Under The Rotterdam Rules*, Lloyd's List 2010. His journal publications are extensive and reflect his interests in international commercial and maritime law and in arbitration law. He is Editor-in-Chief of the *Journal of International Maritime Law* and an editor of *Arbitration International*.



Dr Shuangge Wen LLB (CUPL), LLM (Nottingham, Manchester), PhD (Manchester)

Prior to joining Swansea Law School in 2011, Dr Shuangge Wen was a Lecturer at the University of Liverpool. Her research specialism extends from general aspects of business law to interdisciplinary areas including corporate governance, business ethics and investment strategy. After completing her PhD at the University of Manchester, focussing on the long-standing debate concerning the purposes of the corporation, she has spent the past two years in researching an assortment of interrelated corporate governance topics. These have included the significance of socio-economic and cultural contexts in shaping corporate governance, the role of institutional investors in governance practice, and the growth in attention to corporate ethics in a context of gloomy economic forecasts. Her research has been fruitful in this area, particularly in terms of the acceptance of lengthy papers by leading journals including *Business Ethics: a European Review*, *International Company and Commercial Law Review*, and *International Trade and Business Law*. Dr Wen is involved in the teaching of our LLM programmes and also is the module director of the Company Law in a Comparative Context.



Professor Richard Williams LLB (Wales), LLM (London)
Solicitor of the Supreme Court England & Wales

Richard Williams is a visiting professor at the School of Law, Swansea University and lectures on the LLM programme. He was formerly a partner with Ince & Co, a leading City law firm specialising in shipping and related matters. In practice he specialised in charterparties and bills of lading and was regularly recognised in the professional press as one of London's leading practitioners. For many years he was Head of the firm's Chartering and Dry Shipping Group and he retains a consultancy position with his former firm. Throughout his career he has been involved not only in the litigation of individual cases but also in the development of policy and documentation within the industry both for clients and international industry bodies and regularly advised various UN Agencies and other international bodies in relation to industry-wide issues and the drafting of standard documents. He is a frequent speaker at conferences and seminars around the world. When in practice he took a keen interest in professional training and continues to retain this interest. He is co-author with both Jeremy Farr and Patrick Griggs, ex-president of the *Comite Maritime International*, of 'Limitation of Maritime Liability', 4th ed (2005, LLP Ltd) and has published many articles on various aspects of charterparties and bills of lading.

ENTRY REQUIREMENTS AND ADMISSIONS PROCEDURES

ENTRY REQUIREMENTS

Candidates are required to have a good initial degree in law or a cognate discipline. A candidate may also be admitted by showing proof of relevant experience in the proposed area of study, such as professional, commercial, business or financial experience.

Financial Support

Swansea University Postgraduate Studentships are advertised annually and are awarded on a competitive basis. For master courses normally a restricted number of partial scholarships (or partial tuition waivers) are available.

For up-to-date information on scholarships please visit regularly:

www.swansea.ac.uk/scholarships/postgraduate/

Language Proficiency

Most EU/overseas candidates will be expected to satisfy the requirements of proficiency in English, for example an IELTS (International English Language Testing System) score of 6.5 or TOEFL 230 computer-based (88 inter-net based, 570 paper-based).

Students from certain countries, such as Cameroon, Canada, Kenya and Nigeria, are exempted from language requirements as they are educated through the medium of English.

English Language Training Services (ELTS), in cooperation with the School of Law, has developed a full-time subject specific Law/LLM Pre-Sessional programme for students intending to progress onto a law degree programme at Swansea University. This 10 week course is divided into two five-week teaching blocks; the first entry point in July is designed for students who have an English Language level of at least IELTS 5.5 or equivalent and need to improve this to the level required for entry to their chosen programme.

The second 5 week block during August and September has been designed for international students who who have an English language level at least 6.0 IELTS or equivalent and need to improve this level to 6.5 or students who have already met the English language entry requirements for their programme, but wish to improve their English for legal purposes and have a period of orientation before starting their University course.

For further information on the Law/LLM Pre-Sessional course, please visit:

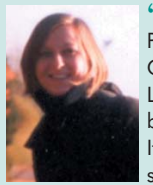
www.swan.ac.uk/law/postgraduate/lawllmpre-sessional/



"The lectures are very interactive and the academics are very approachable and

supportive. In addition to enhancing my academic knowledge, the course has helped me to develop my confidence. The LLM Programme has been the most enriching and rewarding educational experience for me. I would recommend this course to anyone who wishes to take his/her learning experience to the next level."

Mudit Singh (India)
Completed LLM in International Maritime Law



"The LLM Programme in Commercial Law could not be better. It provides students with a

high level of teaching in a friendly and supportive environment. The cultural and ethnic diversity created of the students makes a great experience even more interesting. I found studying for a masters degree at Swansea to be unique experience and, I am sure, future students will enjoy it as much as I did."

Muriel Renaudin (France)
Completed LLM in International Commercial Law



"I'm smiling. Do you know why? It is because I am getting the quality of learning I

expect from an institution housing erudite and approachable lecturers. They make learning a success by organising seminars after each lecture topic is concluded to ensure that comprehension is ascertained."

Emeka Soloman Eze (Nigeria)
Completed LLM in International Commercial and Maritime Law



ADMISSION PROCESS

HOW TO APPLY

You can apply for the LLM degrees in the following ways:

Online: Apply online and track your application status at <http://www.swansea.ac.uk/study/ontrack/>

By post: Application forms are obtained from:
POSTGRADUATE ADMISSIONS OFFICE
SWANSEA UNIVERSITY
SINGLETON PARK
SWANSEA
SA2 8PP

You can also obtain electronic copies of application forms from our Postgraduate Studies section at:

<http://www.swan.ac.uk/law/postgraduate/enquiriesandapplications/> or contact the School at: llm@swansea.ac.uk

When to Apply

Early applications are advisable (by 31 July, in the year of intended study).

Decision Process

The School will consider your application as soon as it is directed to our admission tutors by the Admissions Office. Ensuring that your application is complete and legible will assist the speed of the admissions process. Following the School's recommendation, formal offers are made by the University Admissions Office. Offer letters contain comprehensive details of the terms under which offers are made, together with any conditions. Details of how to apply for University accommodation will accompany offers of admission to full-time candidates.

Admissions Policy

Our admissions policy is to encourage the enrolment of students who have the potential to acquire a broad range of complex new skills; to master an extensive body of advanced knowledge and, above all, to undergo a period of rigorous, intellectual development culminating in the award of a university qualification. The University welcomes applications and enquiries from people regardless of age, ethnic or national origins, race, religion, sex, sexual preference, marital status, family responsibility, physical or sensory disability and political or religious beliefs and activities unless those activities are unlawful or contrary to the policies of the University. When considering a candidate's suitability for admission, the people delegated with the task of recommending students for admission will pay due regard, as appropriate, to previous academic performance; prior experiential learning; availability (or lack) of suitable learning opportunities and resources; current courses of study; assessments by referees, educational psychologists or medical practitioners; records of achievement; evidence of commitment and motivation; quality of written work; performance at interview or under examination conditions. The selectors shall also take into account the candidate's ability to contribute to the cultural, sporting or social life of the University and the community. We recognise that, although they may well satisfy some or all of its criteria for selection, certain candidates may have to be denied admission because of the intensity of competition for a limited number of places.



"The University was awarded the Best Student Experience award by the Times Higher Education Supplement in 2005. My experience at Swansea Law School was certainly my best student experience."

Monaji F. Zamakhchary (Saudi Arabia)
Completed LLM in International Maritime Law



CONTACT DETAILS

Professor Barış Soyer
(for LLM enquiries only)
llm@swansea.ac.uk

Dr Theodora Nikaki
(for LLM enquiries only)
llm@swansea.ac.uk

Dr Bebhinn Donnelly-Lazarov
(for research degrees enquiries only)
lawpostgradresearch@swansea.ac.uk

Visit our website at:
www.swansea.ac.uk/law
Or telephone (for LLM enquiries only):
+44 (0)1792 513516

Information provided in the brochure is accurate at August 2011. You are advised to check our web site for changes that might occur especially as far as the personnel and module selections are concerned.

“... a strongly campus based life-style; a stylish campus, near the sea, or city, or mountains; generous accommodation either on campus or in a student community close by; a wealth of cultural activity on campus; lots of high-quality sports provision - and a sound academic reputation!
An impossible dream?
Well, without going too far over the top, we have to say Swansea has it all ...”

Potters Guide to Higher Education in the UK



Swansea University
Prifysgol Abertawe

SCHOOL OF LAW
SWANSEA UNIVERSITY
SINGLETON PARK
SWANSEA
SA2 8PP
WALES, UK

www.swansea.ac.uk/law