

Faculty of Medicine
and Health Sciences
School of Nursing Sciences
Undergraduate Courses

Contents

02_Welcome to the School of
Nursing Sciences

03_Why Study with Us?

04_Careers and Employability

05_Our Graduate's Experience

12_Our Student's Experience

Our Courses

06_BSc Adult Nursing

06_BSc Children's Nursing

06_BSc Learning Disabilities Nursing

06_BSc Mental Health Nursing

08_BSc Midwifery

10_Dip HE Operating Department Practice

14_Life at UEA

16_Norwich and the Region

18_Applying to UEA

19_Visiting Us



Welcome to the School of Nursing Sciences

I am pleased that you are considering studying at the University of East Anglia's School of Nursing Sciences. The School has a family of interrelated professional disciplines (midwifery, all fields of nursing, and operating department practice) and its research strengths are in mental health, wellbeing in older age and in emergency and urgent care.

In making the choice to study at UEA you will be embarking on learning which is going to be both challenging and exciting, and we hope you reap the benefits from this, by enjoying the varied opportunities that will be made available to you. We, in the School, expect you will develop both professionally and personally as a result of your experiences.

As a School community we are committed to sustained engagement with staff, students, service users and carers and we aim to be in tune with the priorities and requirements of our NHS partners and other providers at a time of considerable change and resource constraint in the wider economy. We enjoy very good working partnerships with commissioners, healthcare providers and other HEI's in the region and we have recently appointed a new joint Chair in Workforce Futures with the School of Allied Health Professions.

The success of the School is reflected by the popularity of its programmes and a number of measures of esteem. We currently have around 750 undergraduate students and 1,100 post-registration and postgraduate students taking a variety of modules and courses, including our flagship MSc programmes in Health Sciences, Mental Health and Advanced Practice. At present we are undertaking approximately 30 funded research projects including seven clinical trials.

We would welcome your application to study at the School of Nursing Sciences.

Professor Val Lattimer, Head of School

Why Study with Us?

Our School of Nursing Sciences is home to leading experts in the education of healthcare professionals. The multidisciplinary nature of the School supports future team working between all healthcare professionals in the workplace.

Excellent Reputation

We are extremely proud of our teaching methods and our staff are passionate about their subject. It is this commitment to excellence that has earned us a top seven ranking in the UK for Nursing and Paramedical Studies in the Guardian University Tables, 2013 and in the Complete University Guide, 2012. In addition, we have been in the top ten for student satisfaction every year since the National Student Survey began.

First-class Facilities

Our facilities are second to none, with all the latest interactive, hi-tech equipment. Situated in the purpose-built Edith Cavell Building to the south of the campus, we take advantage of our position next to the Norfolk and Norwich University Hospital.

World-class Teaching and Research

The School of Nursing Sciences is consistently commended for its teaching and quality of learning experience. Reviews of the School's programmes and placement experiences by the Nursing and Midwifery Council have always been positive and we have been rated as 'outstanding' or 'good' in many areas.

We are also very proud of our research record. In the last Research Assessment Exercise (2008), 40 per cent of our overall research in nursing and midwifery at UEA was rated as internationally excellent or above. This means that our team is at the forefront of new thinking and new teaching in the fast-paced and challenging delivery of health services.

Supportive Culture

We are especially proud of the support we give our students. Teaching groups are small, which encourages a close-knit student body and a supportive learning culture. You will be assigned your own personal adviser, a qualified professional who will be there every step of the way to guide you through the course.

Placements

All our placements are monitored so as to meet the quality standards for learning and we have well established, excellent working relationships with our clinical partners in the region to ensure the best quality clinical learning environment for our students. Please see the individual course pages for more information about placements for a particular programme.

Financing Your Studies

Our programmes in nursing, midwifery and operating department practice are funded by the NHS and so there are no tuition fees to pay to the University. For more information visit:

www.uea.ac.uk/finance

Students will also be able to apply for a non-means tested grant and a means tested bursary from the NHS. If you are eligible for a bursary then you will be able to claim for some travel and accommodation costs. For more information please visit:

www.nhsbsa.nhs.uk/students

In addition you can apply for a reduced rate non-means tested living cost loan (also known as a maintenance loan) from Student Finance England. For further information visit:

www.direct.gov.uk/studentfinance



Careers and Employability

All of our nursing, midwifery and operating department practice courses prepare you for registration with either the Nursing and Midwifery Council (NMC) or the Health and Care Professions Council (HCPC), as these are a statutory requirement to practise in the UK. Our employment record is excellent, with graduates finding employment within a wide range of healthcare settings.

Nursing

We have an excellent employment record for students completing our nursing programmes. Nurses qualifying in each of the fields of Adult Nursing, Learning Disabilities Nursing, Mental Health Nursing and Children's Nursing have a range of potential career pathways across different care settings.

Midwifery

Midwives are in demand, so your career prospects are excellent. On successful completion of the programme, you will have the opportunity to work in a diverse range of healthcare environments from clinical settings, hospitals, the community, birth centres, to independent practices.

Our graduates have progressed to working within the NHS, armed forces, education sector, charities, research and private practice in the UK and overseas. Wherever you go you will have job satisfaction and the enviable role of supporting women and their families during an unforgettable time in their lives.

Operating Department Practice

On successful completion of the programme, our students will be eligible to apply for entry to the Register of the Health and Care Professions Council, which is a requirement for practice.

Most employers will offer a period of preceptorship post-qualification, which can vary in length. Once you have qualified, pay and responsibility will depend upon experience and further specialist skills you may acquire. It is possible to become a senior operating department practitioner, perhaps running a theatre unit.

Operating department practitioners may work in a range of areas and roles outside of operating theatres including transplant teams, intensive care units and as part of resuscitation teams. There are also opportunities in research, education and training. Options exist to work in other countries such as Australia, New Zealand, and the USA although job roles may vary slightly from those in this country.

Careers Support

We endeavour to ensure that all our students receive advice and training to prepare them for the transition to employment or further study. The UEA Careers and Employability Service supports students to reflect on their skills and aspirations and relate these to potential jobs. The team gives advice and runs invaluable workshops on finding vacancies, interview technique and how to write your CV more effectively for job or higher-degree applications.

www.uea.ac.uk/careers

Our Graduate's Experience

Since recently graduating in 2012 as a Mental Health Nurse, John Holsworth has been able to directly transfer many of the skills he learnt whilst at UEA into his new NHS role.

John Holsworth

Graduated
Mental Health Nursing

Employer
Norfolk and Suffolk
Foundation NHS Trust

Occupation
Staff Nurse – Dementia Care

Please explain how your new career has developed since graduating

I am now two thirds through my preceptorship training and have been able to enhance my leadership skills particularly when co-ordinating a shift. In addition, working within Dementia Care has allowed me to enhance my communication skills to provide appropriate person-centred care for people who live with dementia. My role as a Staff Nurse has helped me to gain in confidence particularly when working as part of the inter-professional team, which includes social workers, occupational therapists, physiotherapists and consultants.

What is the most rewarding aspect of your new role?

My training has provided me with the confidence to engage with inter-professional teams within the clinical area, whilst liaising with service users and their relatives allowed me to enhance my knowledge base.

What steps did you take in finding your recent employment?

During my last year of training I regularly visited the NHS Jobs website looking for a suitable role for a Band 5 Nurse. I contacted numerous potential employment areas within the Trust to ascertain whether they would be prepared to accept a newly qualified nurse, and in most cases they were happy to consider this if I met the criteria.

What key skills did you learn at UEA?

I was able to enhance my communication skills, which are essential in nursing and with everyday life. I was also able to appreciate that academic writing is a skill, which can be enhanced and nurtured while formulating a summative assignment. Within the training I was able to participate within enquiry-based learning, which involved relaying research topics related to nursing to my fellow peers.

How have they made a difference in your career development?

They have enabled me to develop my professional approach to nursing and fit into the team within the clinical area. This has enabled them to trust my judgment, which in turn has provided me with self belief.

Do you have any tips for new students?

One of the aspects of a summative assignment is to meet with your academic adviser to discuss an essay plan and to gather research materials. I found that commencing essays at the earliest opportunity allowed me to take advantage of the full time allocated. I also experienced that good timekeeping and being punctual on placements allowed me to forge good professional relationships with my mentors.

What did you think about your lecturers, teaching and facilities in the School?

My experience of studying at UEA was positive. The Edith Cavell Building had ideal facilities, including the computer room which supported my learning no end. I found the lecturers very approachable and had excellent knowledge of mental health nursing.

Why did you decide to study at UEA rather than another institution?

I was aware of UEA's reputation for this course so was eager to gain a place.

What is your most memorable moment at UEA?

Successfully completing the course was the most memorable moment.



BSc Nursing Degrees

For further information **T** 01603 591515
E admissions@uea.ac.uk
www.uea.ac.uk/nsc

BSc Adult Nursing
UCAS code B701

BSc Mental Health Nursing
UCAS code B760

BSc Learning Disabilities Nursing
UCAS code B761

A level (typical offer): BBB (excluding General Studies and Critical Thinking)

BSc Children's Nursing
UCAS code B730

A level (typical offer): ABB (excluding General Studies and Critical Thinking)

Length of course: 3 years

We expect you to have a clear understanding of the profession ideally with relevant voluntary or paid work in healthcare; an interest in people; a strong academic attainment and be able to demonstrate evidence of study within the last five years. Transferable skills from other types of life experience are also valued such as skills in team working, leadership, problem solving and communication.

Special Entry Requirements

You must also have five GCSE grades A–C including English Language/Literature, and Maths as a minimum, and a Science preferred.

Applications are encouraged from those with other and non-traditional qualifications.

Typical offer grades are for guidance only – please refer to our website for more detailed entry requirements and up-to-date course information.

www.uea.ac.uk/nsc/courses

Additional Requirements

Successful applicants will be subject to a satisfactory Occupational Health Check, an Enhanced Criminal Records Bureau Disclosure and two satisfactory references.

As part of our screening process successful applicants will be expected to attend a selection interview.

Please note that all courses start in September each year. The BSc Adult Nursing degree also has an additional intake in January.

Our Nursing Degrees offer students the opportunity to undertake a pre-registration programme with specialisms in Adult, Children, Learning Disabilities and Mental Health Nursing. These prepare you for a challenging and rewarding career in various roles within community and hospital settings.

Our Course

Our full-time nursing programmes share a common structure of two modules a year for three years. The content of the first year is the same for each variation of the course, with specialist subject modules being introduced from the second year onwards.

Each module requires you to work with nursing students from other fields for a significant proportion of your academic-based learning. You are required by the NMC to achieve a total of 4600 learning hours divided equally between theory and practice. During the first year you have a high level of contact time with lecturers, which gradually decreases over the three-year period as you become a more independent learner.

The academic working day is Monday to Friday, 9.00am to 5.00pm which consists of direct contact time in class as well as directed and self-directed study.

An example of a typical working week for each year of the degree can be found at:

www.uea.ac.uk/nsc/courses

Our Teaching Methods

Our approach to teaching is based on enquiry, skills acquisition, and early patient contact.

The courses include the following elements:

Enquiry Based Learning – Early on in the course you will be given real patients' problems to solve as both groups and individuals. This ensures you experience how to apply your new knowledge in practice.

Essential Clinical Skills – Clinical skills are embedded in the course right from the start. Simulated skills are taught and practised in the classroom prior to placements and throughout the course.

Interprofessional Learning – You will meet and work with students from other health-related disciplines to exchange knowledge, practice and ideas. This forms a compulsory part of our course and highlights the interdependence of various professions in effective healthcare provision.



“My main reason for choosing to come to UEA was the combination of a university with a high academic reputation, a brilliant campus environment and a course that will help me make a real difference to the lives of people with learning disabilities.”

Matthew Webb, Learning Disabilities Nursing Student

Clinical Placements

Clinical placements will take place across East Anglia and involve a wide range of settings. There may be occasions when you will be required to stay in accommodation away from your usual base. Placements will use a 'Hub and Spoke' approach which allows you to effectively experience the client's/patient's journey through the healthcare services. Due to the nature of the healthcare environment you will experience placements which cover the 24-hour and seven day a week cycle. Where the practice learning environment operates a shift system, you are required to work the shifts you are allocated and will have access to your placement mentor.

Whilst in clinical placements, you will complete various learning outcomes, and a nursing attributes assessment as well as recording your reflections based on your placement experience. You will also maintain a Skills Development Profile throughout the three-year course to demonstrate your learning and competency in clinical skills.

There will also be an opportunity to spend up to three weeks on an elective placement either locally, nationally or internationally at the end of the second year.

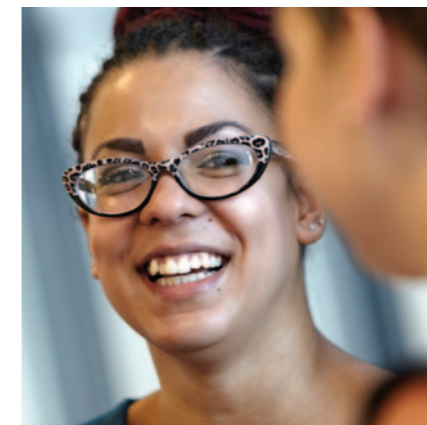
How We Assess You

You will experience different assessment methods, carefully considered to reflect the importance of applying the relevant evidence base to practice. You will be expected to compile and maintain a portfolio of evidence throughout the three-year programme. With guidance and support, you will be expected to build a sound evidence base demonstrating your progression, reflecting on your learning – both theoretical and clinical skills. Other assessment strategies are also utilised, such as written assignments, unseen examinations, case studies, practical examinations, group presentations and a dissertation of 10,000 words in order to illustrate a deeper understanding of the relationship between the theory and practice of nursing.

Course Modules

Please note that course profiles may be reviewed and changed for future years of study. Full course profiles for the current academic year, including details of compulsory and optional modules, are available for each programme at:

www.uea.ac.uk/nsc/courses



BSc Midwifery Degree

For further information **T** 01603 591515
E admissions@uea.ac.uk
www.uea.ac.uk/hsc

BSc (Hons) Midwifery

UCAS code B720

A level (typical offer): ABB (excluding General Studies and Critical Thinking)

We expect you to have a clear understanding of the profession ideally with relevant voluntary or paid work in healthcare; an interest in people; a strong academic attainment and be able to demonstrate evidence of study within the last five years.

Length of course: 3 years

Special Entry Requirements

You must also have five GCSE grades A–C including English Language/Literature, Science and Maths.

Applications are encouraged from those with other and non-traditional qualifications.

Typical offer grades are for guidance only – please refer to our website for more detailed entry requirements and up-to-date course information.

www.uea.ac.uk/hsc/courses

Additional Requirements

Successful applicants will be subject to a satisfactory Occupational Health Check, an Enhanced Criminal Records Bureau Disclosure and two satisfactory references.

As part of our screening process successful applicants will be expected to attend a selection interview.

As a student on our three-year full-time Midwifery Degree programme at UEA you will be part of a highly competitive course that will prepare you both academically and clinically for this challenging and fascinating profession.

Our Course

Midwifery is unique because it is the only profession that focuses solely on the care of pregnant women and their families throughout the whole childbirth experience – from preconception, pregnancy and labour, to the early stages of parenthood.

It goes without saying that excellent communication skills, sensitivity and a sympathetic approach are essential. You will also need to respond effectively to the needs of childbearing women and their families as you become a reliable and constant source of care and advice during what is probably the most important time of their lives.

Midwifery is an ever-changing profession and in this demanding role you will need to be highly motivated and committed, with a mature attitude. Predominately a team player you will also have to work under your own initiative. It's a lot to ask, but the rewards are immense.



“The course is mapped out so that training follows a natural curve, combining practice and theory to facilitate learning. UEA has the Gold Standard for its training in Midwifery – I would not have been happy to have received my training elsewhere!”

Louise Nash, Midwifery Student

Our Teaching Methods

Our approach to teaching is based on enquiry, skills acquisition, and early patient contact. The courses include the following elements:

Enquiry Based Learning – Early on in the course you will be asked to solve real problems from real women as both groups and individuals. This ensures you experience how to apply your new knowledge in practice.

Seminars and Workshops – You will work individually and in small groups exploring subjects and contemporary issues, sharing and discussing your findings in a variety of ways with your peers.

Essential Clinical Skills – Clinical skills are embedded in the course right from the start. Simulated skills are taught and practised in the classroom prior to placements and throughout the course.

Interprofessional Learning – You will meet and work with students from other health-related disciplines to exchange knowledge, practice and ideas. This forms a compulsory part of our course and highlights the interdependence of various professions in effective healthcare provision.

Clinical Placements

Clinical placements are key to ensure you receive hands-on experience as soon as possible. Students will have placements at one of three local NHS Trust hospitals based in Kings Lynn, Great Yarmouth and Norwich which will involve shift work. A preference to these placement sites will be discussed during the selection process – please note that whilst every effort is made to accommodate an individual's preference this cannot be guaranteed.

You will also have the opportunity to put into practice what you have learned in the clinical environment of your choice during an ‘elective’ placement option at the end of year two.



Course Modules

Year 1

- Foundations for Practice
- Promoting Healthy Lifestyles

Year 2

- Health and Social Complexities
- Complex Childbearing

Year 3

- Leadership, Innovation and Care Quality
- Becoming a Competent Practitioner

Please note that course profiles may be reviewed and changed for future years of study. Full course profiles for the current academic year, including details of compulsory and optional modules, are available for each programme at:

www.uea.ac.uk/hsc/courses



Dip HE Operating Department Practice

For further information **T** 01603 591515
E admissions@uea.ac.uk
www.uea.ac.uk/hsc

Dip HE Operating Department Practice UCAS code B990

GSCE offer: Five GCSE grades A–C including English Language and Maths as a minimum, with a Science preferred.

Length of course: 2 years

We expect you to have a clear understanding of the profession ideally with relevant voluntary or paid work in healthcare; an interest in people; a strong academic attainment and be able to demonstrate evidence of study within the last five years.

Applications are encouraged from those with non-traditional qualifications.

Typical offer grades are for guidance only – please refer to our website for more detailed entry requirements and up-to-date course information.

www.uea.ac.uk/hsc/courses

Additional Requirements

Successful applicants will be subject to a satisfactory Occupational Health Check, an Enhanced Criminal Records Bureau Disclosure and two satisfactory references.

As part of our screening process successful applicants will be expected to attend a selection interview.

“I liked the way in which the ODP course incorporated clinical placements. This is because I found it easier to learn when I could relate back to practice-based environments.”

Shannon Carter, Operating Department Practice Graduate

Our Course

This two-year full time diploma in higher education course is designed to offer students the opportunity to develop the knowledge, skills and attitudes needed to become safe and competent practitioners and to function effectively and efficiently as part of a multi-disciplinary team within the operating department environment.

Operating department practitioners work alongside surgeons, anaesthetists and theatre nurses to help ensure every operation is as safe and effective as possible. They work in anaesthetic and scrub roles that involve preparing equipment and the environment, whilst acting as a link between the peri-operative team and other parts of the hospital. They also work in the post-anaesthetic care setting delivering one-to-one patient care.

Our programme consists of eight compulsory modules of learning, four in each of the two years of study. The academic year is 42 weeks long, divided into three terms, each of 14 weeks duration. In total you carry out 1875 hours of practice-based learning and 1275 hours of theory, based on an average 37.5 hour learning week over the two years.

Operating Department Practitioners play a key and vital role in the management and care of patients who are undergoing a surgical procedure.



“There are not many institutions that run the Operating Department Practice course, and the UEA has a great reputation for medical courses. The course has a good mix of academic work and practical time in placement, where you get to really use the skills you learn in the classroom.”

Michael Farrow, Operating Department Practice Student

Our Teaching Methods

Our approach to teaching is based on enquiry, skills acquisition, and early patient contact. The courses include the following elements:

Enquiry Based Learning – Early on in the course you will be asked to solve real problems from real patients as both groups and individuals. This ensures you experience how to apply your new knowledge in practice.

Essential Clinical Skills – Clinical skills are embedded in the course right from the start. Simulated skills are taught and practiced in the classroom prior to placements and throughout the course.

Interprofessional Learning – You will meet and work with students from other health-related disciplines to exchange knowledge, practice and ideas. This forms a compulsory part of our course and highlights the interdependence of various professions in effective healthcare provision.

Clinical Placements

Your practice hours will be in the form of placements, which will be divided into three blocks, and start in the first module. During the practice hours, students will undertake placements with different “teams” in the operating departments (e.g. general surgery, orthopaedics, gynaecology, etc).

These are key to ensuring you receive hands-on experience as soon as possible. Students will have practice placements at one of three local NHS Trust hospitals based in King’s Lynn, Great Yarmouth and Norwich where you will be expected to undertake shift work. A preference to these placement sites will be discussed during the selection process. During placement experiences, the learning will be supported and supervised by a Placement Mentor who is an experienced and qualified operating department practitioner or nurse.

Course Modules

Year 1

- Anaesthetic Care
- Safety in Practice
- Surgical Care
- Professional Practice

Year 2

- Preparation for Future Practice
- Recovery Care
- Specialist Practice
- Professional Practice

Please note that course profiles may be reviewed and changed for future years of study. Full course profiles for the current academic year, including details of compulsory and optional modules, are available for each programme at:

www.uea.ac.uk/hsc/courses



“It is a very practical, hands-on course and I thrive on learning in this particular style. I’ve always wanted to work in healthcare, and the ODP course is the foundation to a great career.”

Chloe Michael,
Operating Department Practice Student (pictured left)





Emily Heaffey
BSc Midwifery

I really liked the 50/50 mix of practical (placement) and theory. The facilities in the School, based at the Edith Cavell building are lovely and modern, bright and airy and the skills labs are fantastic. It's also in a great location, situated just across the road from the Norfolk and Norwich University Hospital.

How did you find living in halls of residence on campus?

Living on campus was a great experience and in my first year, it enabled me to travel easily to lectures as well as be involved with all the student activities. We also had a wonderful cleaner!

Did you receive any financial support with your course?

Yes, I receive a non-means tested student maintenance loan and a means tested NHS bursary, which is what all the midwifery students receive.

Have you attended any gigs run by the Students' Union?

The LCR (Lower Common Room) is a great venue, really intimate! Last year I saw Marina and the Diamonds and Ellie Goulding, both of which were amazing. The Student Union also has another venue in the city centre, the Waterfront, which is fantastic and where I recently saw Slow Club. It's also really reasonable to see these bands, around ten pounds a ticket, which is brilliant.

I attended lots of open days and found the UEA midwifery lecturers to be very helpful, friendly, welcoming, informative and good fun. The open days give a really wonderful insight into the course!

What do you really enjoy about your midwifery course?

The size of the midwifery cohort is small which is nice and this ensures everybody gets to know each other, and as a group we all became really close. It's also lovely that your lecturers get to know you all too.

Why did you decide to study at the University of East Anglia?

The reputation of the University encouraged me to apply, plus I liked how the School of Nursing Sciences was closely connected with the University campus, on the Norwich Research Park. This was very important to me as I would be living in the halls of residence on campus and I wanted to experience university life with students from other courses.

Emily Heaffey is a third-year Midwifery student who has taken some time out to tell us why she chose to study at the School of Nursing Sciences. She has really enjoyed the time spent on her clinical placements having already attended the birth of 20 babies so far and counting!

I enjoy helping out with School events. Open days really give a wonderful insight into the course.



What advice would you give to new students starting in the School of Nursing Sciences at UEA?

My advice would be to enjoy it, and have great fun!

Tuesday night in the UEA LCR is fancy dress night!



Tell us about your career plans and goals you may have for the future

I hope to qualify as a midwife in the summer of 2013 and – fingers crossed – get a job at the Norfolk and Norwich University Hospital. I hope to then go travelling and practise as a midwife in other parts of the world.

The LCR is a great venue, really intimate, I have recently been to see Ellie Goulding and Marina And The Diamonds.



How would you describe Norwich and Norfolk to a potential student?

Norwich is such a wonderful city with everything you could possibly want! It has a great nightlife, fantastic gigs and arts events and the shopping is great with lovely surrounding areas such as the coast at Sheringham, North Norfolk.

We have lovely surrounding areas such as the North Norfolk coast.



Life at UEA

The University of East Anglia is an internationally renowned university based on a spacious campus that provides top quality academic, social and cultural facilities to more than 13,000 students. The latest National Student Survey showed once again that our students are among the most satisfied in the country. The University has been in the top 10 English mainstream universities for student satisfaction ever since the survey began seven years ago. We came third for facilities and third overall in the Times Higher Education Student Experience Survey 2011, and the Guardian University Guide 2012 placed us in the top 20 UK institutions.

“This excellent university is among the best on virtually any grounds you care to mention.”

The Virgin Guide to British Universities 2012



An Ideal Location

Built on 130 hectares of beautiful parkland on the outskirts of the historic city of Norwich, our campus is one of the most innovative in the country, combining natural beauty with architectural flair. The campus has won more than 20 architectural awards and ongoing multi-million pound investment continues to enhance teaching and research facilities. Virtually no part of our campus is more than a few minutes' walk from anywhere else, and almost every student need is catered for on site – there's a large food shop, a newsagent, a post office, two banks, two launderettes, a Waterstone's bookshop, restaurants, bars and even a travel agent. There are good public transport links into the city, which has a mainline railway station with regular services to London and all other parts of the country. Norwich also has an international airport.

Accommodation

First year undergraduates, who live outside a 12 mile radius of Norwich and who have selected UEA as their firm choice are guaranteed one of our 3,500 study bedrooms (many en suite). You will need to apply by the deadline which is published on our web site. Our accommodation has achieved the joint highest score in the Times Higher Education Student Experience 2011 and The Architects' Journal has voted our original residences – the Ziggurats – in the top ten examples of university architecture in the country.

www.uea.ac.uk/accommodation

“Students get the chance to live in either an architectural masterpiece or some of the best modern facilities of any university.”
The Sunday Times University Guide 2011



Learning Resources

Our library contains more than 800,000 books and journals, as well as extensive collections of specialist materials. It is open seven days a week, and until midnight six days a week during semesters. We provide a wide range of IT services including campus internet access via a wireless network and in student residences. Specialist equipment such as scanners, colour printers and work stations specially equipped to meet the needs of users with mobility problems or visual impairment are also offered.

www.uea.ac.uk/is

Student Support

We offer a wide-range of advice and guidance to any student who wishes to make the most of the opportunities available to them whilst at UEA or who is experiencing difficulties. From counselling to childcare, money matters to our chaplaincy, it's good to know there's help available whenever you might need it. We have financial advisers, an international student advisory team, learning enhancement tutors, an excellent nursery and a disability team. We also have a purpose built campus Medical Centre, a Boots pharmacy and a dental service offering NHS treatment to students and their families.

www.uea.ac.uk/services/students

“The Sainsbury Centre for Visual Arts is perhaps the greatest resource of its type on any British campus.” The Times Good University Guide 2012



Sporting Facilities

The University's £30 million Sportspark is now the biggest indoor sports centre in Britain, boasting a state of the art Olympic sized swimming pool, athletics track, climbing wall, superbly equipped gym and an extensive range of sports and leisure activities, from dance classes to five-a-side football.

www.sportspark.co.uk

Arts and Culture

We are home to the Sainsbury Centre for Visual Arts which provides access to permanent exhibitions of world art and a diverse range of touring exhibitions unrivalled by other universities. UEA also hosts an International Literary Festival which has included famous names such as Ian McEwan and Kazuo Ishiguro – both alumni of UEA's Creative Writing course.

www.scva.ac.uk

www.uea.ac.uk/litfest

“UEA's LCR (Kaiser Chiefs pictured) has been voted the best student venue in the country by the music industry's Live! Magazine. Each year more than fifty live bands grace its stage.” The Virgin Guide to British Universities 2012



Gigs

The Independent says our Student Union gig roster is “like pop music's roll of honour, with the biggest names performing each year and other students' unions wondering how on earth we manage it”. The LCR plays host to a wide range of popular bands, with around 60 gigs on campus each year. Regular club nights cover a wide spectrum of tastes and ensure there is something for every music fan. Recent high profile performers include Coldplay, Bombay Bicycle Club, Ed Sheeran, Rizzle Kicks, Wretch 32, Professor Green, Kaiser Chiefs, Example, Noah and the Whale.

www.ueastudent.com

“The excellent sporting facilities are based around the £30 million Sportspark, which boasts an Olympic-sized swimming pool, fitness and aerobics centres, athletics track, climbing wall, courts and pitches.” The Times Good University Guide 2012



Norwich and the Region

Norwich doesn't shout about itself too much but what a city – and what a region. It's got it all – and some – and is just waiting to be explored! Norwich, a thriving cosmopolitan city with a noble heritage, is surrounded by glorious countryside including the Norfolk Broads. The Norfolk coastline, with everything from glorious sandy beaches to mysterious creeks, is easily accessible too, so you'll have plenty of time for rest and relaxation – if your studies allow! The city's landmark Norman Cathedral and Castle, cobbled streets lined with charming half-timbered houses and over 30 medieval churches are complemented by vibrant new developments including the Forum, which houses the Millennium Library and hosts regular concerts, comedy nights and craft fairs. So you've got that charming mix of historical atmosphere and those vital modern day must haves!

Shopping

Norwich boasts a rewarding blend of independent stores, small specialist shops, major high street chains and the country's largest six-day open-air market, all set amidst a maze of pretty medieval lanes and alleys.

It's no wonder then, that it was voted one of the top ten places to shop in the UK and with Norwich Lanes, a particular hot spot for quirky buys, gaining more popularity, the city is a shopaholic's paradise.

With much of it pedestrianised and being very compact, it is a joy to simply walk around, maybe stopping in one of those fab cafés for a reviving hot chocolate.

Nightlife

In addition to the University's renowned LCR venue which hosts regular club nights, the city centre caters for all music tastes, from mainstream rock and pop and r & b to alternative indie, and underground dance.

There are more than 300 pubs and bars in the city, each with its own special vibe. The Golden Triangle has an excellent selection of pubs which are well established within the student community, offering regular quiz evenings, film nights and good food. If you choose to stick around over the summer, there are several great music festivals which take place in the region, including the increasingly popular Latitude which sees everything from poetry to rock gods on offer – often with mud thrown in for free!

The Waterfront is UEA's very own live music venue and nightclub situated in Norwich's city centre.



“I think Norfolk is the most beautiful and perfect place on Earth.”

Stephen Fry, actor, writer and UEA Honorary Graduate

Norwich is England's first UNESCO City of Literature.



Art and Culture

Norwich was nominated to become the UK's City of Culture 2013, and it's easy to see why. The city has six theatres with the Theatre Royal regularly staging West End productions, three cinemas, including a great art house cinema, a number of established museums and a host of art galleries, from the renowned Norwich Gallery to artist led galleries Outpost and Stew.

The Norfolk and Norwich Festival, held each May, is internationally acclaimed, attracting performers and visitors of all ages. Its programme covers everything from classical ensembles to French-Canadian acrobats and the Open Studios scheme, also part of the Festival, sees local artists opening up their studios for an exclusive peek inside – fascinating stuff!

The carnival and firework display for the Lord Mayor's celebration every July is also not to be missed while the Royal Norfolk Show, at the end of June every year, is the country's largest two-day county show which celebrates all that is great about this diverse county from its agricultural heritage to its gourmet food producers.

Travel

Norwich has excellent public transport with trains every 30 minutes to London. Norwich International Airport is only 15 minutes from the city centre and has links worldwide via four daily flights to Amsterdam. National Express and Megabus also operate services directly from the University.



Food and Drink

There is a wide range of foodie options in Norwich, providing everything from all day breakfasts to your local curry house. A number of more formal restaurants are still very affordable, and have student friendly discounts and menu options. There is also a great range of independent cafés offering everything from posh sarnies to smoothies with old fashioned afternoon tea becoming a firm favourite! Look out for all the great delis and farm shops for fresh, seasonal produce (Norfolk produces everything from juicy mussels to organic chocolate) so you will never starve!

And the county has many micro breweries so you can sample Nelson's Revenge or even one called Headcracker and Norwich's annual Beer Festival, every October, sees people queuing round the block to get in! But don't worry, the local apple juice is delicious too.

Perfect Location

One of the best things about the University of East Anglia is its location, situated on the edge of both the city and countryside. The Norfolk coastline is home to world famous bird reserves and beautiful beaches, as well as ever-changing countryside interlaced with sleepy medieval villages, bustling market towns and stately homes. One of England's most beautiful national parks, The Broads, is also right on our doorstep for sailing, walking and cycling while paintballing, ice skating, amusement parks, a trip to the zoo or a day at the races all are within easy striking distance of the University.

“Norwich... has been voted one of the best small cities in the world.”

The Times Good University Guide 2011



Applying to UEA

Applications

All applications for full-time undergraduate degree courses must be made through the Universities and Colleges Admissions Service (UCAS). The UCAS code name and number for the University of East Anglia is EANGL E14. Please visit their website to apply and for further information regarding the application process.

www.ucas.com

All of our nursing, midwifery and operating department practice courses start in September each year. Our BSc Adult Nursing course has an additional start date in January each year.

International Applicants

We welcome applications from students outside the UK for our nursing programmes only. However, non-UK students will be required to pay tuition fees and a supplementary fee for clinical placements. In addition non-UK students will be required to pay for the additional requirements e.g. health checks, etc.

There are over 2,500 non-UK students studying at the University of East Anglia from more than 100 countries, including Australia, China, Cyprus, France, Gambia, Mexico, India, Kenya, Spain, USA and Vietnam. For further information about all aspects of life as an international student at UEA including English language requirements and help improving your English, please see:

www.uea.ac.uk/international

www.intohigher.com/uea

Our stunning campus, just 15 minutes from the centre of Norwich, has won over 20 awards for architecture.

UEA is in the top ten of the Guardian's People and Planet Green League 2011, which ranks universities according to their policies and commitment to environmental management.



Students with Disabilities

We welcome applications from students with disabilities. The Disability Team aims to offer information, advice and the co-ordination of support required by students both before and during their studies. The more information we have in advance of your arrival, the easier it is for us to make any necessary preparations. This can include any reasonable adjustments which are required for your studies or accommodation. We would be happy to arrange an informal visit to the University for you. For more information see:

www.uea.ac.uk/services/students/disability

Mature Applicants

We extend a welcome to students who are returning to study, who may have alternative qualifications. Students who come with alternative educational backgrounds add a very valuable dimension to the undergraduate teaching programme in the School. Staff and students alike appreciate and value their motivation, skills and experience.

We operate a flexible admissions policy in order to take account of prospective students who do not come to us directly from sixth form, and are always pleased to advise you on the most suitable way forward if you lack formal qualifications. Please contact us for an informal chat. See:

www.uea.ac.uk/return

Visiting Us

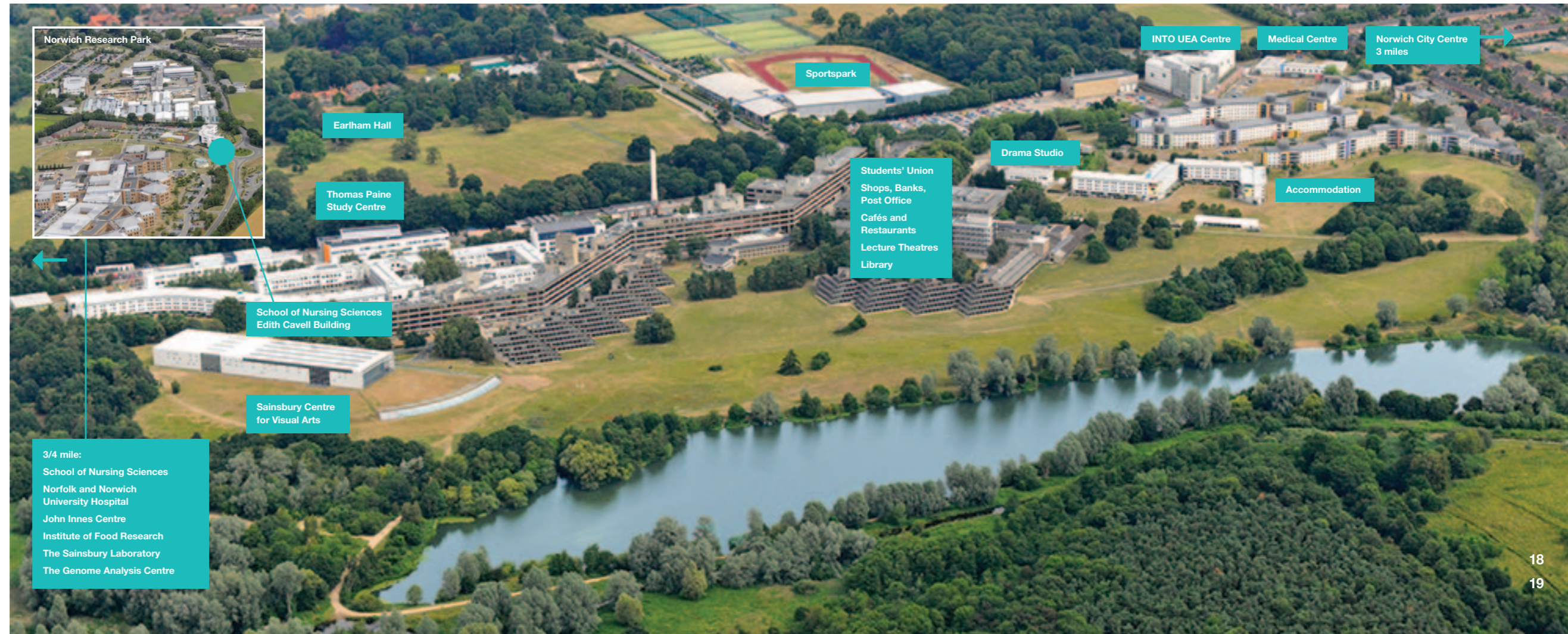
We are always delighted to meet prospective students, either before or after their applications through UCAS. The best way to assess a university is to visit and experience what it has to offer. We warmly invite you to come and meet us.

Open Days

These give you the chance to find out about student life here, courses we offer, student finance and graduate careers. You will be able to talk to lecturers and current students as well as taking a tour around campus. For more information and upcoming dates see:

www.uea.ac.uk/opendayinfo

Norfolk is the safest place in the country according to recent statistics issued by the Home Office 2012.





Disclaimer

We have taken great care in compiling the information contained in this brochure, which we believe to be accurate at the time of going to press. However, the provision of courses, facilities and other arrangements described in the brochure are regularly reviewed and may, with good reason, be subject to change without notice. Applicants for undergraduate programmes will be notified immediately of any material changes likely to have a bearing on their application, such as cancellation of, or major modification to, degree programmes or modules offered; changes to the delivery or location of courses, changes to accommodation provision, changes to entry requirements; or changes to fees and charges to be levied by the University.

Should industrial action or other circumstances beyond the control of the University occur, and this interferes with the University's ability to deliver programmes or other services in accordance with the descriptions provided, the University will use all reasonable endeavours to minimise disruption as far as it is practicable to do so. Provided the University complies with its obligations set out above, it shall not be liable to students or applicants, for any loss, costs, charges or expenses arising out of the information set out in this brochure, changes to that information or any disruption or interference of the type described above.

The University operates an Admissions Complaints Procedure. If you feel that you have a well founded complaint regarding your application, please contact your Admissions Office in the first instance.

Equal Opportunities

The University of East Anglia operates an equal opportunities admissions policy. It aims to ensure that no applicant will receive less favourable treatment on the grounds of sex, age, marital status, race, colour, nationality, ethnic origin, sexual orientation, or political or religious belief. The University welcomes applications from candidates with disabilities. Information contained in this brochure may also be made available in other formats, to ensure access for everyone. Please call (+44) (0)1603 593753 to discuss.

Ethical Investment Policy

The University of East Anglia operates an Ethical Investment Policy.



The University of East Anglia is a Fair Trade university.

Acknowledgements

Produced by UEA Marketing and Communications

Design and Production by The Click and Darren Leader Studio

Photography by Andi Sapey and Pete Huggins

Printed by – Gallpen, Norwich.

This brochure has been printed on an FSC accredited paper, produced from sustainably managed forests, using vegetable based inks.

Produced October 2012



When you have finished with this brochure please recycle it.

UEA Achievements

“Happier students than those at UEA are hard to find... due in great part to the sheer quality of the teaching and the distinctiveness of the surroundings.”
The Sunday Times University Guide 2011

“Top 10 for student satisfaction for the last seven years.”
National Student Survey 2011

“This excellent university is among the best on virtually any grounds you care to mention.”
The Virgin Guide to British Universities 2012

“A top 20 university.”
The Guardian University Guide 2012



THE QUEEN'S
ANNIVERSARY PRIZES
FOR HIGHER AND FURTHER EDUCATION
2009 & 2011



Winner
Whatuni.com Student
Choice Awards 2011

facebook.com/ueaofficial
www.twitter.com/uniofeastanglia

Further Information

Undergraduate Admissions
School of Nursing Sciences
Faculty of Medicine and Health Sciences
University of East Anglia
Norwich Research Park
Norwich NR4 7TJ

T +44 (0)1603 591515

F +44 (0)1603 591523

E admissions@uea.ac.uk

W www.uea.ac.uk/nsc