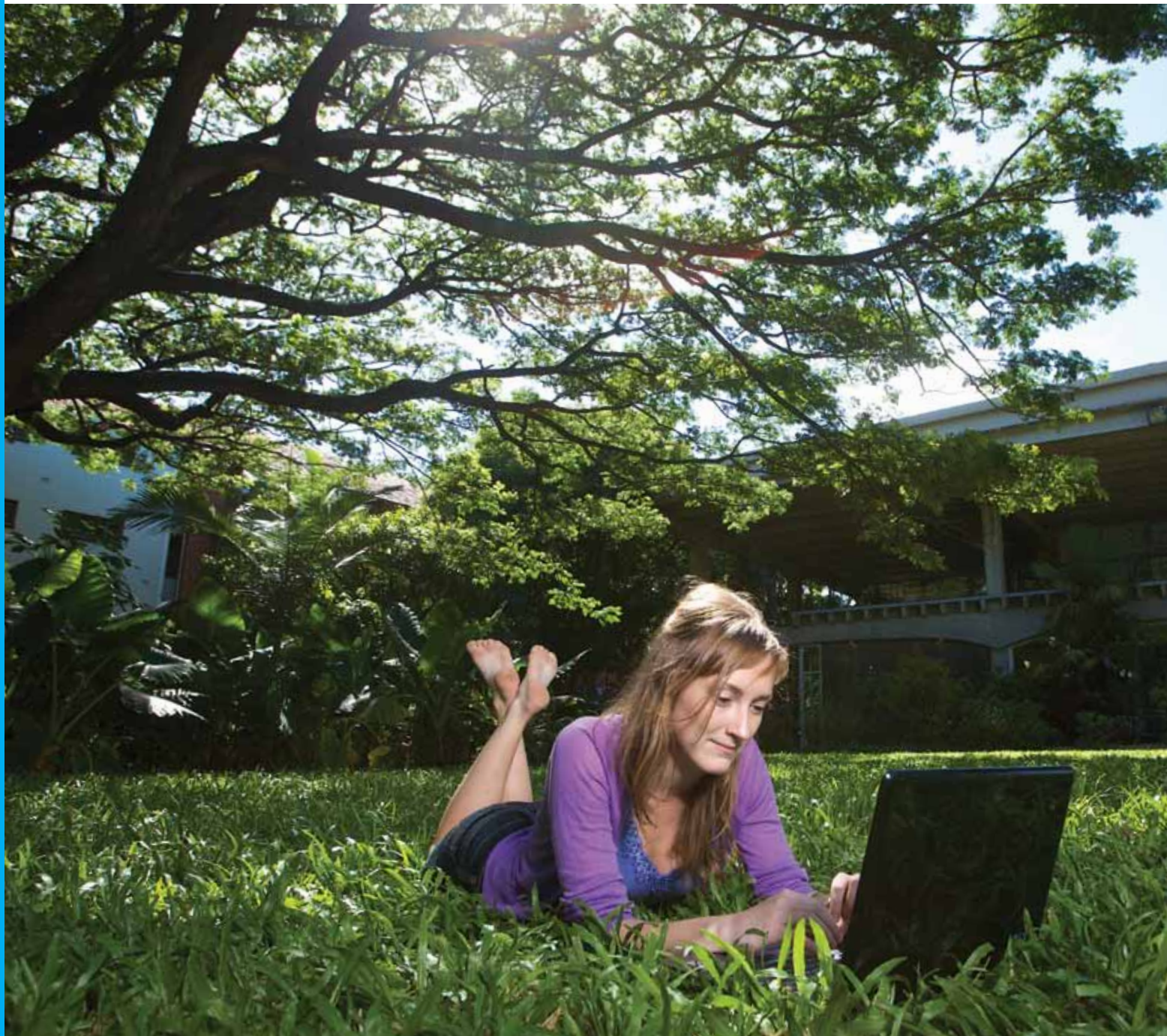


# Study Abroad Prospectus 2012





## WELCOME

James Cook University is contemporary and dynamic, and the second oldest university in Queensland. We are a research intensive university established over forty years ago as Australia's university for the tropics. Our focus is on producing graduates who have the expertise and intellectual curiosity to make a difference in their profession and their communities and on conducting the research needed to meet the challenges facing the tropical world.

You can be confident about choosing James Cook University as your University. We have been ranked among the best universities in the world for the strength of our teaching programs and the high calibre of our research. Our graduates make a difference in roles around the country and the world.

As a student at James Cook University you will have many opportunities. You will gain skills and discover new ideas, subjects, people and possibilities. You will learn how to build on the core expertise you acquire and be able to adapt to the demands of a changing world.

Our main campuses are located in northern Queensland, in the tropical cities of Townsville and Cairns, between the World Heritage listed Great Barrier Reef and Wet Tropics rainforest. We also have an international campus in Singapore and a campus in Queensland's capital city of Brisbane operated by Russo Higher Education Pty Ltd.

Many study options incorporate field trips into our unique region and I hope you can take advantage of this opportunity. Thousands of study abroad students from many countries have enjoyed their time studying with JCU and many have returned to continue with full degree or postgraduate studies with us.

This guide is designed to help you learn about the University – our courses, campuses and more. I invite you to explore all that we have to offer and if you have further questions, our JCU International team will be more than happy to assist.

If you choose to study with us, you will join a stimulating and supportive learning community that is committed to helping you reach your goals and take your place in the world.

**Professor Sandra Harding**  
*Vice-Chancellor and President*

### OUR LOCATIONS

AUSTRALIA



Singapore



JAMES COOK UNIVERSITY  
**Study Abroad  
 Prospectus 2012**



Cairns



Townsville

# Contents

Welcome from the Vice-Chancellor	Inside front cover
James Cook University – A Brighter Future	2
<b>Our Locations</b>	
Townsville	4
Cairns	5
North Queensland Attractions and Activities	6
<b>Courses, Fees and Entry Requirements</b>	
The Study Abroad Program	8
Popular Subjects Offering Field Trips	10
Student Testimonials	12
Academic and English Entry Requirements	13
<b>Life on Campus</b>	
Student Services	14
Accommodation	15
<b>Important Information</b>	
Study Dates	16
Academic Information	16
Planning your Budget	17
Australian Visa Information	17
How to Apply	18
Study Abroad Application Form	19
Getting to James Cook University	Inside back cover
Contact Us	Back cover

**DID YOU KNOW**

JCU is recognised around the world for its expertise in marine biology, environmental studies, tropical health and tourism.



# JAMES COOK UNIVERSITY

## *A brighter future for life in the tropics, world-wide*

### Global quality degrees

James Cook University offers a full range of courses spanning the arts and humanities, business, creative arts, education, engineering, health sciences, information technology, law, marine biology, medicine, sciences, social sciences and veterinary sciences. This broad range of study areas means you can usually choose subjects from across disciplines and combine areas of personal interest into a customised study plan. Our programs are accredited by leading professional organisations and are internationally recognised.

### Teaching excellence

Study with us and you will learn from expert teachers. Over the past five years, JCU academics have won more than 31 citations for teaching excellence from the Australian Teaching and Learning Council – more teaching awards than many larger universities. JCU teaching staff are highly qualified and dedicated.

### Supportive study environment

JCU recognises that knowledge has the power to change lives and strives to create a student centred learning environment where students learn to take full advantage of their university experience. With friendly campuses, smaller class sizes, accessible teaching staff, and excellent support services including study skills and student mentor programs, our students receive the personal attention they need to achieve their best.

### Practical focus

JCU courses will give you opportunities for hands-on experience from internships, vacation placements, and real-world projects with business, industry and government organisations, to field trips in the natural environments of northern Queensland. JCU works with employers and industry groups to make sure our courses reflect best industry practice.

### Graduates and discoveries that make a difference

James Cook University is about people and place, and we adopt new methods, new approaches and new technologies to help our students develop the skills, abilities and knowledge base they need to succeed. We bring a diverse array of knowledge, skills and experience through our staff and the broader community to fulfil the potential of our University.

### Research intensive

As a leading research university, JCU provides excellent facilities for teaching and learning. The unique location of James Cook University allows nationally significant and internationally-recognised research to be conducted by both staff and students. Much research focus is based on the industries and environments of northern Australia including marine biology, biodiversity, tropical environmental studies, earth sciences/geology, engineering, tropical health and tourism. Total research related income at JCU reached \$45.91 million

in 2009, including funding from government, competitive grants and industry. This is expected to rise strongly in the coming years. JCU is a member of the national alliance, Innovative Research Universities and is one of the world's leading research universities in the tropics.

### A natural choice for study

Tropical northern Queensland attracts over two million visitors each year who come to experience the Great Barrier Reef and the islands and rainforests of the Wet Tropics – both World Heritage listed environments. Visitors and residents enjoy a huge range of leisure activities including diving on the reef, visiting the ancient rainforests and waterfalls in the many national parks, bushwalking, camping, fishing and visiting historic outback regions or the picturesque farming villages of the Atherton Tablelands. These special environments provide living laboratories for many JCU courses.

### DID YOU KNOW

JCU is ranked in the top 5% of universities worldwide based on 2010 assessments by two of the world's leading university ranking systems – the Shanghai Jiao Tong University and Higher Education and Accreditation Council.



### DID YOU KNOW

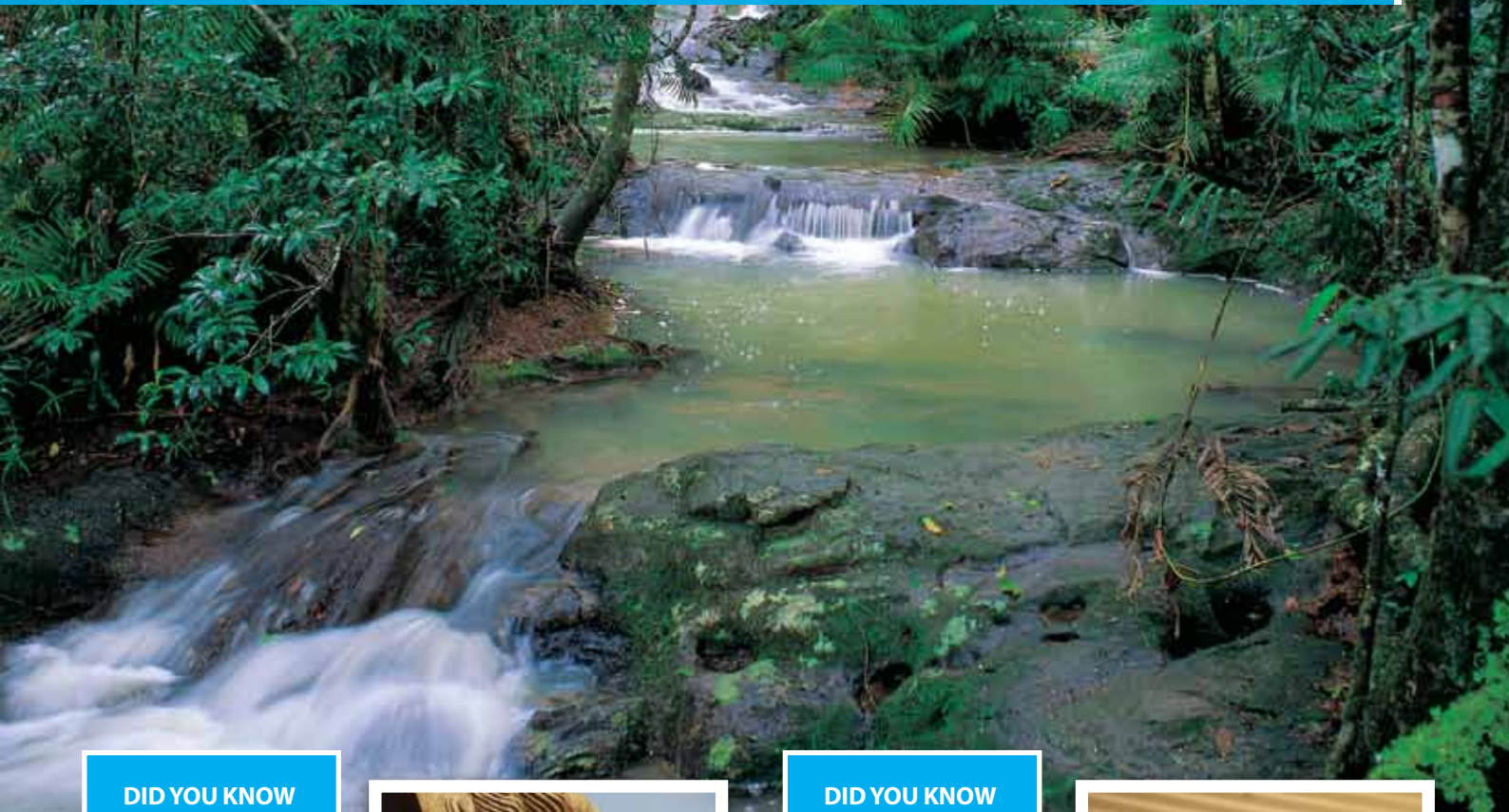
Our research capabilities mean that undergraduate and postgraduate student enjoy unique opportunities for field trips, industry links and experience at research stations.







*James Cook University (JCU) is the second oldest university in Queensland and Australia's leading university in the tropics. Offering excellence in teaching and research, JCU is a vibrant, multi-campus university with its main sites in the tropical Queensland cities of Townsville and Cairns. Total student enrolments are more than 18,000 and growing, including over 5,000 international students from 100 countries. There are over 300 programs available to international students to study at JCU.*



**DID YOU KNOW**

James Cook University's Singapore campus also offers a study abroad program with an Australian university in an Asian environment. For more information visit [www.jcu.edu.sg](http://www.jcu.edu.sg)



**DID YOU KNOW**

Over the past five years, JCU academics have won 31 national awards for teaching excellence from the Australian Teaching and Learning Council – more than many larger universities.





## OUR LOCATIONS

# Townsville



*Townsville is a thriving coastal city and port with a population of over 175,000, making it Australia's largest tropical city. Situated in the dry tropics, most days are sunny, with an average daytime temperature of between 25°C-30°C (77°F-86°F).*



### The City

Townsville is the major administrative centre of north-eastern Australia. Its varied and fast growing economy means that there are many employment opportunities in the city, both for JCU graduates and for students seeking part-time work to help finance their study. The city is also a stepping off point for visiting the Great Barrier Reef – two hours away by boat, and is one hour from the Wet Tropics rainforests of Paluma. The resort regions of Mission Beach and the Whitsunday islands are also within easy reach. Students have a wealth of sporting, cultural and entertainment options available.

[www.townsville.qld.gov.au](http://www.townsville.qld.gov.au)  
[www.townsvilleenterprise.com.au](http://www.townsvilleenterprise.com.au)

### The Campus

James Cook University's largest campus, with over 11,500 students including approximately 1,500 enrolled international students, is located in a peaceful 386-hectare setting of natural bush and parkland full of native Australian flora and fauna. The campus is nestled in the residential suburb of Douglas, close to the Ross River, 13 kilometres (8 miles) from the city centre.

The Townsville campus offers a range of activities and facilities for students including:

- food and drink outlets
- bookshop
- gym, sporting facilities and many active clubs and societies
- swimming pool
- performance space
- JCU Accommodation Service
- counselling and career services
- main JCU library

There is also a student mall with dining options, a post office and hairdresser. The Medical Centre is situated next to Townsville Hospital, opposite the campus and a variety of sporting clubs and student societies are available for students to join. Students have round-the-clock access to the university's wireless computer network that covers the majority of the campus. Around 1,400 students from diverse backgrounds live on campus in colleges and halls of residence, and with free parking available in several areas of the university, on-campus childcare options and a spacious layout, the campus has a true community atmosphere.



### DID YOU KNOW



The beautiful Townsville and Cairns campuses are home to a diverse range of plant and animal species. Learn more at our interactive Discover Nature website: [www.jcu.edu.au/discovernature](http://www.jcu.edu.au/discovernature)

## OUR LOCATIONS

# Cairns



*Over two million visitors come each year to enjoy the spectacular natural attractions and activities on offer, which include scuba diving and snorkelling on the Great Barrier Reef, exploring ancient rainforests, rivers and waterfalls, national parks, Port Douglas and Mission Beach.*

### The City

Cairns is one of Australia's most popular tourist destinations. Cairns has a diverse population of around 140,000. With the Great Barrier Reef only 1.5 hours away by boat, there are many opportunities for reef and island visits and diving. The city has a cosmopolitan atmosphere with many cafés, restaurants, markets and nightclubs. Students looking for part-time work during their studies in Cairns will find a variety of part-time jobs available in tourism, hospitality, retail sales and business administration. Thanks to the thriving business in international visitors, many employers value part-time workers with foreign language skills. [www.cityofcairns.qld.gov.au](http://www.cityofcairns.qld.gov.au)  
[www.cairnsgreatbarrierreef.org.au](http://www.cairnsgreatbarrierreef.org.au)

### The Campus

The James Cook University Cairns campus combines a spectacular natural setting with modern and innovative teaching facilities. The campus nestles below rainforest-covered mountains in the suburb of Smithfield, 15 kilometres (approximately 9 miles) north of the city centre and near the popular northern beaches suburbs. The

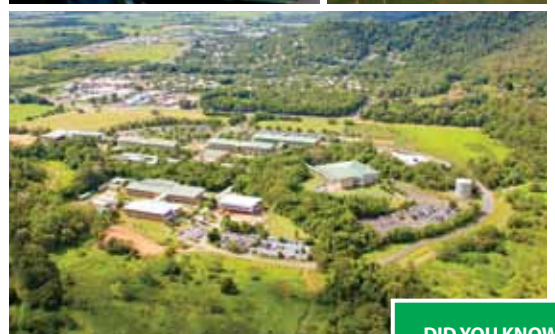
campus is served by regular buses to the city centre and the nearby Smithfield shopping centre and residential areas.

With over 4,000 students enrolled, including more than 380 international students, the campus offers the latest teaching and learning facilities including an impressive library and information technology building, some of the largest science-teaching laboratories in the state and specialist health and science research facilities. A \$30 million Dentistry teaching building opened in 2010.

The Cairns campus offers a range of activities and facilities for students including:

- student eatery, café and bar
- bookshop
- sporting facilities
- James Cook English Language Centre
- amphitheatre
- Student Association Office

Students enjoy small classes and a friendly campus atmosphere. Modern student accommodation is also situated near the campus.



### DID YOU KNOW



The Great Barrier Reef is one of the world's greatest natural wonders and is home to the largest coral reef ecosystem.



# Attractions and Activities

## Reef

One of Australia's most remarkable gifts, the Great Barrier Reef is blessed with the breathtaking beauty of the world's largest coral reef. The reef contains an abundance of marine life and comprises over 3000 individual reef systems and coral cays and literally hundreds of picturesque tropical islands with some of the world's most beautiful sun-soaked, golden beaches. Swimming, snorkelling, diving and sightseeing amongst beautiful corals and sea life in turquoise blue waters is an unforgettable experience. Access to the Great Barrier Reef is easy from both the Townsville and Cairns campuses.



## Outback

Just 140 kilometers west of Townsville lies the historic old mining community of Charters Towers. The heritage-listed buildings of Charters Towers are a reminder of its golden past. The town was founded in the 1870's when gold was discovered. Such were the boom years, between 1872 and 1899, that Charters Towers hosted its own Stock Exchange. The history of Charters Towers is evident throughout the township. Many Art Deco buildings can be sighted in the town. With the charm of the gold-rush and an enthusiastic and friendly country vibe, the historical rural town of Charters Towers takes visitors back in time with many intriguing sites to see.





Significant for James Cook University students is the university's unique natural location. JCU's main campus cities of Townsville and Cairns are located in tropical north Queensland. Few places on earth can boast such unique natural attractions, within two World Heritage listed sites – the Great Barrier Reef and the superb tropical rainforests of the Wet Tropics region. Students studying in North Queensland also enjoy easy access to historic outback regions and diverse flora and fauna.



## Rainforest

The Daintree is the world's oldest living rainforest – more than 40 million years older than the Amazon. The beauty of the Daintree region is due to the variety of nature found here, a total of eight wildlife habitats: the billabong, open grass land, mangroves, riverine, lowland rainforest, creeks, can and estuary habitat. The Skyrail Rainforest Cableway in Kuranda, north of Cairns, is multi-award winning and takes you just meters above the rainforest. Interpretative stations along the way let you walk through these ancient forests. The rainforest is easily accessible from both the Townsville and Cairns campuses.



## Wildlife

The tropical Townsville and Cairns campuses are home to a diverse range of plant and animal species. It is not uncommon for students to see wallabies and kangaroos on the campuses. Both the Townsville and Cairns campuses are close to wildlife parks and zoos, allowing students to get up close and personal to some of Australia's most cherished and feared animals. Billabong Sanctuary, located 18 kilometers (11 miles) south of Townsville, is considered one of Australia's best interactive wildlife experiences.



# The Study Abroad Program





*Each semester, JCU welcomes study abroad students from all over the world. The Study Abroad Program at JCU offers you the opportunity to study on campus in tropical North Queensland, Australia for one or two semesters and receive credit for your studies at your home institution.*

## WHY STUDY ABROAD AT JCU?



Comprehensive choice of internationally recognised subjects across a wide range of study areas at both the undergraduate and postgraduate levels.



Unrivalled access to some of the world's most beautiful regions, with many subjects offering the chance to gain hands-on experience through our extensive fieldwork options.



A student-centred learning environment where students never feel like just a number. With friendly campuses, smaller class sizes, accessible teaching staff, and excellent support services, our students receive the personal attention they need to achieve their best.



Many of the popular study abroad subjects available at James Cook University – for example, Indigenous Australian Studies, Tropical Marine Ecosystems or Tropical Rainforest Ecology – are unique to this part of the world.



A chance to meet and study alongside individuals from around the world and gain a new perspective.

## Study Areas

As a study abroad student you can enrol in any subject from any Faculty at JCU (subject to meeting pre-requisites and other requirements). Areas of study are spread across the following four Faculties:

- Faculty of Arts, Education and Social Sciences
- Faculty of Law, Business and the Creative Arts
- Faculty of Medicine, Health and Molecular Sciences
- Faculty of Science and Engineering

A full list of subjects offered at JCU, links to subject descriptions and details of subject availability and pre-requisites can be found at <https://secure.jcu.edu.au/app/studyfinder>. Links to the JCU handbook and additional course information can also be found from the above link.

## Study Areas

- Accounting
- Agriculture
- Anthropology
- Aquaculture
- Archaeology
- Asia-Pacific Community Development
- Australian Studies
- Biochemistry
- Biology
- Biomedical Sciences
- Botany
- Business
- Chemistry
- Chinese
- Communication
- Computer Science
- Creative Media
- Criminology
- Cultural Heritage Studies
- Digital Media
- Digital Visual Arts
- Earth Sciences
- Ecology
- Economics
- Education
- Engineering
- English
- Environmental Science
- French
- Geography
- Geology
- German
- Graphic Design
- History
- Hospitality Management
- Indigenous Australian Studies
- Information Technology
- International Business
- Japanese
- Journalism
- Law
- Management
- Marine Biology
- Marketing
- Mathematics and Statistics
- Microbiology
- Music
- Nursing
- Occupational Therapy
- Pharmacology
- Physics
- Physiology
- Politics and International Relations
- Psychology
- Public Relations
- Rainforest Science
- Social Science
- Sociology
- Speech Pathology
- Sport and Exercise Science
- Theatre
- Tropical Biology
- Tourism
- Visual Arts
- Women's Studies
- Zoology

# Field Trips

## **BZ2450:03** **BIODIVERSITY OF** **TROPICAL AUSTRALIA**

*Teaching Periods 1 and 2, Cairns*  
*Teaching Period 2, Townsville*

The course provides students with an introduction to the plants, animals, and ecosystems of tropical Australia, with an emphasis on the Wet Tropics bioregion of northern Queensland. The field trips are designed to enhance students' understanding of key concepts taught during lectures.

### **Cairns**

#### **Field Trip 1: Flecker Botanical Gardens and Centenary Lakes Boardwalk**

This three-hour field trip is designed to help students familiarise themselves with the local flora.

**Cost:** No charge to students

#### **Field Trip 2: Atherton Tableland and Cape Tribulation**

This is a two-and-a-half day excursion commencing Friday afternoon and ending Sunday. Students visit a variety of different rainforest and savanna habitats and go spotlighting for rainforest mammals and birds.

**Cost:** Approximately \$55

#### **Field Trip 3: Bush Foods Tutorial at Red Ochre Grill Restaurant**

This field trip is held at the end of the semester and runs for about 2 hours on a weekday. Students get an opportunity to taste tropical Australian bush foods, which are discussed during the lectures.

**Cost:** Approximately \$20

### **Townsville**

Townsville field trips include four day trips to rainforests, tropical shores and wetlands.

**Cost:** No cost to students

## **BZ3210:03** **RAINFOREST ECOSYSTEMS**

*Teaching Period 1, Townsville*

This subject covers the ecology of Australian closed forests and associated vegetation, including origins, classification and factors determining distribution and diversity and responses to environmental stresses (including global climate change). The field trip introduces students to rainforest ecosystems, and the

basic skills needed to describe and analyse rainforest communities. It also provides the opportunity for students to work on group projects, which form the core of the on-course assessment.

**Cost:** Approximately \$160 (3 days)

## **BZ3615:03** **CLIMATE CHANGE AND** **PLANT SURVIVAL**

*Teaching Period 1, Townsville*

The strategies and mechanisms that allow plants to survive and proliferate in diverse environments provide valuable insights into how plants have adapted to different conditions in the past. In fact, many living plant species evolved at a time when climate was significantly different from today. This subject explores these strategies and uses knowledge of them to provide a framework for assessing the resilience and vulnerability of our living flora to adapt to current trends in climate change. Ecological, reproductive, and physiological plant survival strategies will be analysed in a 6 day field trip 'out bush' to Boulia, which provide the basis of practical skills in this subject.

**Cost:** Approximately \$140 (6 days)

## **BZ3705:03** **THE AUSTRALIAN** **VERTEBRATE FAUNA**

*Teaching Period 1, Townsville/Cairns*

This subject examines the biogeography and evolution of Australian vertebrate fauna. Students gain practical experience in the capturing, handling and the formal census of Australian vertebrate fauna in an outback setting. The subject includes a three-and-a-half day field trip to a national park in western Queensland where students learn to survey fauna using mistnets, pittraps, scat surveys, active survey techniques, spotlighting and habitat descriptions.

Pre-requisites: BZ1004 or equivalent introductory zoology course

**Cost:** Approximately \$220 (3.5 days)

## **EA2900:03** **INTRODUCTORY FIELD** **GEOLOGY**

*Block mode (study period 7), June 24 - July 1, Cairns/Townsville*

This is a one-week, field-based intensive subject that runs after the first semester exam period. Students are taught the fundamentals of mapping, including finding your location using pace and compass traverses, reading a contour map to determine your position, recognition and measurement of the orientation of rock types in the field, report writing, generating maps, cross-sections and geological histories, from field data collected during the trip.

**Cost:** Approximately \$50

## **EV2401:03** **AUSTRALIAN LANDSCAPE** **PROCESSES AND** **EVOLUTION**

*Teaching Period 1, Townsville/Cairns*

The subject examines patterns and processes of the development of the Australian landscape and its soil mantle, and human interactions with these elements of the natural environment. The subject includes field work on campus, and a 2 day field trip to the diverse landscapes west of Townsville or Cairns.

**Cost:** Approximately \$50

## **EV3010:03** **PLANNING FOR** **SUSTAINABLE** **COMMUNITIES** **IN A CHANGING** **ENVIRONMENT**

*Block Mode (study period 6) approx June 18-June 29, (Cairns)*

The subject seeks to provide students with advanced capacities to understand the challenges that face planning for sustainable regions and settlements. The course examines what it means to live and work in a remote settlement including sustainable management of marine and terrestrial resources, water use and allocation, regional sustainability, resilient communities, implications of climate change, carbon economy, food miles and the food supply, nature conservation and development. The field trip compares and contrasts the challenges experienced by local government including an Aboriginal Shire Council to give the student a firsthand experience of what is involved in planning for sustainable

communities.

**Cost:** Approximately \$250 (4 days field work in 2 remote communities and includes food, accommodation, transport and tours)

## **EV3201:03** **MANAGING COASTAL AND** **MARINE ENVIRONMENTS**

*Teaching Period 2, Townsville*

This subject examines the impacts of human activities on coastal and marine environments. It explores the complex relationships among the ecological and social values of these environments and outlines strategies and tools for their management.

**Cost:** No cost to students

## **EV3406:03** **CORAL REEF** **GEOMORPHOLOGY**

*Teaching Period 1, Townsville*

This subject examines the geomorphology of coral reefs, covering their evolution and relationships between form and the physical, chemical and biotic processes that operate on coral reefs. The subject includes four days of field-based work conducted at JCU's Orpheus Island Research Station. Students gain hands-on experience, learning about coral reef geomorphology, geomorphological methods, and the growth and evolution of coral reefs.

**Cost:** Approximately \$150, including food and accommodation

## **IA1007:03** **LINKING** **INDIGENOUSNESS**

*Teaching Period 1 & 2, Townsville/Cairns*

Through field trips that enable students to interact directly with Indigenous Australians in their own 'country', this subject aims to highlight the complex interplay between Indigenous knowledge systems and western systems that are a feature of colonial Australian history. The information provided by the Aboriginal and Torres Strait Islander people teaching this subject will link the 'real' to the 're-told' by way of a carefully planned cross-cultural experience. Whilst the intended focus of this subject will be determined by the Indigenous



**James Cook University offers Study Abroad students an exciting opportunity to gain practical experience. Pre-requisites for each subject are listed where required. Students are responsible for the associated field trip costs as listed below. All costs are in Australian dollars and are estimates and subject to change.**

Australians providing the fieldtrip experience, the main focus is on providing students with grounding in Indigenous knowledge issues and concerns that are affecting Indigenous communities today.  
**Cost:** Approximately \$65

### **MB2050:03 FUNCTIONAL BIOLOGY OF MARINE ORGANISMS**

*Teaching Period 1, Townsville*  
This subject deals with the question of biological organisation and design in the marine environment. It aims to provide students with an understanding of how marine organisms respond to the challenges of marine existence through a study of their anatomy and structure and the nature of their habitats. Included in this subject is 8 hours of field work undertaken at Pallarenda Beach and 3-Mile Creek in Townsville and at Picnic Bay on Magnetic Island.  
**Cost:** No cost to students

### **MB2060:03 MARINE ECOLOGY AND ENVIRONMENTAL ASSESSMENT**

*Teaching Period 2, Townsville*  
The special life-history features of marine organisms make it necessary for us to understand their demographic behaviour before we can interpret their responses to environmental change. This course introduces students to the methods of quantitative marine ecology in coastal and reef habitats with a particular emphasis on: monitoring and impact assessment; experimental design; population dynamics and processes. The subject includes 8 hours of field work at Rowes Bay.  
**Cost:** No cost to students

### **MB2080:03 INVERTEBRATE ZOOLOGY**

*Teaching Period 2, Townsville*  
The subject introduces the major groups of invertebrate animals, with emphasis placed on the evolution and diversity of the various phyla and the main biological life history features. Topics include: Phylogenetic relationships among the metazoans; biodiversity of invertebrates; patterns of evolution within the major phyla. This subject includes field trips to Rowes Bay, Three Mile Creek and Kissing Point.  
**Cost:** No cost to students

### **MB3050:03 BIOLOGICAL OCEANOGRAPHY**

*Teaching Period 1, Townsville*  
An examination of the plankton community and its interactions with the physical and chemical environment. Topics include: nutrients and productivity, zooplankton behaviour and life cycles and the distribution of planktonic species over space and time on a broad range of scales. Laboratory work introduces students to the techniques of studying live plankton and methods of preservation for microscopic examination and introduction to plankton taxonomy. This subject includes a half-day field trip.  
**Cost:** No cost to students

### **MB3150:03 FISHERIES SCIENCE**

*Teaching Period 1, Townsville*  
This course provides an introduction to fisheries science and identifies the important features of tropical fisheries. Core elements will include methods used in assessing fish populations, the methods of fisheries science and their application in tropical environments and the importance of the biology of tropical marine species in regard to management strategies. This subject includes a half-day field trip on the university research vessel R/V James Kirby.  
**Cost:** Approximately \$30

### **MB3160:03 EVOLUTION AND ECOLOGY OF REEF FISHES**

*Teaching Period 1, Townsville*  
The biology of coral reef fishes with an emphasis on species from reefs and adjacent waters of the Great Barrier Reef. The subject covers the ecology, morphology, systematics and evolution of coral reef fishes. Practical work includes a laboratory and field program that introduces functional morphology, ecology and field identification of coral reef fishes. This subject will also provide an introduction to current research programs in tropical reef fishes at JCU. This subject includes a three-day field trip to the university marine research station at Orpheus Island.  
**Cost:** Approximately \$220 to cover food and bench fees

### **MB3190:03 CORAL REEF ECOLOGY**

*Teaching Period 2, Townsville*  
A treatment of the major aspects of coral reef biology, including population dynamics, life histories, community structure and diversity, effects of disturbance, competition and predation, and reef management. This subject includes a three-day field trip to the university marine research station at Orpheus Island.  
**Cost:** Approximately \$200 to cover food and bench fees

### **MB3210:03 LIFE HISTORY AND EVOLUTION OF REEF CORALS**

*Teaching Period 1, Townsville*  
An introduction to the biology of corals and processes involved in building and maintaining reefs. An overview of the life histories of sessile, modular organisms, incorporating current research findings (e.g. with respect to sexual/asexual reproduction, larval dispersal, recruitment, growth, lifespan and mortality). A treatment of the functional morphology of corals as an example of a modular organism. An introduction to the taxonomy of reef-building corals. This subject includes a three-day field trip to the university marine research station at Orpheus Island.  
**Cost:** Approximately \$175 to cover food and bench fees

### **PT1410:03 PHOTOGRAPHY**

*Teaching Period 1 and 2, Townsville and Cairns Block Mode (Study Period 6), June 7 – June 24, Townsville*  
This subject introduces students to the fundamentals, basic theory, and practice of photography. It provides an introduction to photography and the use of 35mm digital SLR cameras and accessories, and is especially useful to students who need a basic level of photographic skills as an adjunct to their major area of study. Students studying journalism, creative arts, earth, biological or medical sciences, anthropology, archaeology, tourism or media related courses would find this a useful subject, as will any student with an interest in improving their photographic skills. A field trip may be arranged as part of this subject if there is sufficient student interest.  
**Cost:** Approximately \$50-70

### **PT3000:06 NATURE PHOTOGRAPHY**

*Teaching Period 2, Cairns, Block Mode (Study Period 7), Cairns first two weeks of July\**  
The tropical environment of far north Queensland offers spectacular opportunities for the photographic artist who has a strong interest in and commitment to nature. Students will spend the majority of this subject in the field, immersed in diverse and inspirational natural environments rich with photographic opportunities and aesthetic experiences. Students will be exposed to the relevant legal, ethical, copyright, indigenous and environmental issues associated with the areas in which the field immersion and photographic training will take place. On completion of this subject, students will have a deep appreciation of the natural environments of far north Queensland.  
**Cost:** Approximately \$1200-1500 (depending on locations) to cover accommodation, meals and transport  
\*Subject to final approval

### **MB3330:03 BIOLOGY OF REEF CORALS**

*Teaching Period 3, Townsville*  
This is a field-based intensive subject which will provide an introduction to the biology of corals and physiological processes involved in building reefs. Aspects of the functional morphology and physiology of corals will be explored in relation to major issues impacting coral reefs, particularly bleaching and disease. The practical component will include an introduction to the taxonomy of reef-building corals and to lab and field research methods for the study of reef corals. This subject is a 2-week block subject timetabled in either late January or early February.  
**Cost:** Approximately \$300 to cover food and bench fees

**NEED MORE INFO?**

Visit [www.jcu.edu.au/international/studyabroad](http://www.jcu.edu.au/international/studyabroad) for a full list of study abroad field subjects and sample study packages

**Gitte Henriksen**  
Denmark



*"My home university in Denmark cooperates with many Australian Universities but it was the location of Townsville that made me choose JCU. I love the warm temperatures in Townsville and the wildlife around the campus. What I think I enjoy the most though is how helpful Australians are in general. I'm very impressed with JCU and how the professors make the lectures both serious and fun at the same time. There is a very open feeling at the classes and I like that a lot."*

**Alisha Mia Takahashi**  
United States of America



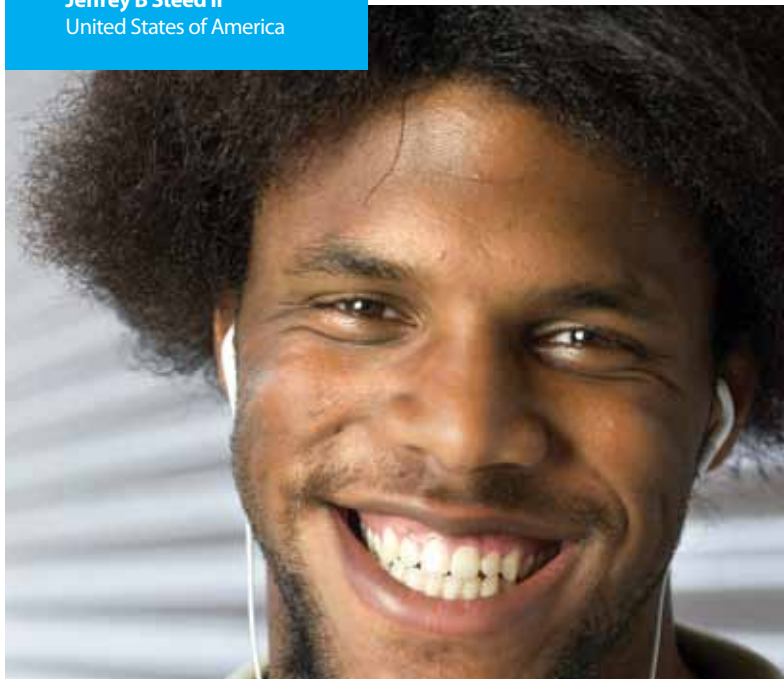
*"I chose JCU because of its incredible location and the variety of courses it has to offer. Everyone I have met – in James Cook International, in classes, at ultimate frisbee and even out in the city are so welcoming and open minded. By involving myself in a club, taking a variety of classes in different subject areas I have made friendships and bonds that will last even when I have to leave JCU."*

**Nadine von Rothleirch**  
Germany



*"I really enjoyed my studies at JCU because the staff are really nice and everything is so well organised. I loved that the campus looks like a park and all the important facilities are within easy reach. The lecturers are very well qualified and the classes were practical. Townsville has a nice feel to it – being small enough that you feel like a local but big enough to have access to everything. Rainforests, beaches, rivers and the Great Barrier Reef – I loved it here!"*

**Jeffrey B Steed II**  
United States of America



*"I heard about JCU through my study abroad program from my home university. I picked JCU because of the environment, warm climate and I wanted to try something new. Everyone is so welcoming and I love walking around the campus and seeing all the different types of wildlife. The professors are intelligent and exciting to listen to. I like their anecdotal stories about previous work and studies in other countries."*



# Entry Requirements

## Undergraduate and Postgraduate Study Abroad

The following is a guide to JCU's minimum academic and English entry requirements for the Study Abroad program.

If your country is not listed below, please visit [www.jcu.edu.au/international/entry](http://www.jcu.edu.au/international/entry) or email [studyabroad@jcu.edu.au](mailto:studyabroad@jcu.edu.au).

COUNTRY OF CITIZENSHIP	UNDERGRADUATE ACADEMIC ENTRY REQUIREMENTS	POSTGRADUATE ACADEMIC ENTRY REQUIREMENTS	ENGLISH ENTRY REQUIREMENTS
Canada	Successful completion of post-secondary studies with a minimum cumulative average of 63% or above.	Bachelor Degree; or equivalent	Not applicable in most cases.
Denmark	Successful completion of one semester (six months) of study at a recognised higher education institution in Denmark or successful completion of Studentereksamen, Højere forberedelseksamen or Højere handelseksamen or Højere Tekniskeksamen.	Bachelor Degree; or equivalent	Not applicable in most cases, providing students have studied through the Danish education system.
Germany	Successful completion of one semester (six months) of study at a recognised German university with an overall grade of Pass or successful completion of Abitur, Fachhochschulreif or Reifezeugnis.	Bachelor Degree; or equivalent	Academic IELTS or TOEFL; or Abitur/Allgemeine Hochschulreife or Zeugnis der Fachhochschulreife with 2 (gut) or better in English as a Basic course OR Abitur/Allgemeine Hochschulreife or Zeugnis der Fachhochschulreife with 3 (befriedigend) or better in English as a Intensified course ("Leistungskurs") OR DAAD English language test – overall result of a in two bands and b (good) or better in two bands in the DAAD language test.
Netherlands	Successful completion of 'Voorbereidend Wetenschappelijk Onderwijs' Diploma; or 'Hoger Algemeen Voortgezet Onderwijs' Diploma.	Bachelor Degree; or equivalent	Academic IELTS or TOEFL; or grade 6 (pass or voldoende) or better in English in the Voorbereidend Wetenschappelijk Onderwijs (VWO) Diploma or 'Hoger Algemeen Voortgezet Onderwijs' (HAVO) Diploma.
Norway	Successful completion of at least one semester (six months) of study at a recognised higher education institution in Norway OR Successful completion of Norwegian Videregående Skolen with a minimum GPA of 3.5.	Bachelor Degree; or equivalent	Academic IELTS or TOEFL; or grade of 4 or better in any English subject in the Videregående Skolen.
Sweden	Successful completion of Upper Secondary School (Slutbetyg) or Kommun vuxenutbildning or 'Komvux' (adult education) if coming directly from high school with a minimum GPA of 12.	Bachelor Degree; or equivalent	Academic IELTS or TOEFL; or grade of VG or above in the Slutbetyg or Kommun vuxenutbildning or 'Komvux'.
United States	Satisfactory completion (a pass) of one year at a recognised university or other post-secondary institution at date of application - minimum GPA of 2.8 (all students with a GPA between 2.5 and 2.7 will also be considered for the study abroad program). Students from Freshman Year are considered on a case-by-case basis. OR successful completion of High School Diploma or equivalent with SAT score of 1000; or an ACT score of 22.	Bachelor Degree; or equivalent	Not applicable in most cases.

## English Language Requirements

If your native language is not English, you may be required to demonstrate English proficiency by sitting a recognised test of your English language ability. The minimum English language proficiency requirement for the Study Abroad program is:

TEST	REQUIRED SCORE
IELTS	6.0 (no component lower than 5.5)
TOEFL (paper based)	550 (with a minimum Test of Written English score of 4.0)
TOEFL (internet based)	79 (minimum writing score of 19)
Pearson (PTE Academic)	57

### DID YOU KNOW

As a study abroad student at JCU you do not have to select subjects from the same study area. You can choose subjects from different areas of study.

If you meet the academic requirements but not the English language requirement, you can receive a packaged offer to study English prior to your semester at JCU.

# Student Services



*JCU provides a full range of support services for students to help them make the most of their time at university. Whether you need help with an assignment, finding accommodation, or just need someone to talk to, there are dedicated services on campus to assist you.*

## James Cook International

The James Cook International office assists every international student at JCU to ensure their stay in Australia and at the University is a pleasant and productive one. The office should be your first point of contact if you need assistance. It provides a range of support services and information for students including:

- preparing for arrival information
- free arrival service
- orientation program
- social activities
- accommodation information
- assistance in emergencies
- personal well-being and welfare support
- Overseas Student Health Cover information
- student advice, advocacy and referral
- course admission procedures
- returning home program

## JCU Student Association

The JCU Student Association is directed by elected students and, for a membership fee, provides services and amenities to students. These include: student representation to the University, student welfare issues, entertainment, sports facilities and food outlets on the Cairns and Townsville campuses.

[www.jcu.edu.au/studentassoc](http://www.jcu.edu.au/studentassoc)

## Arrival Service and Orientation

Orientation consists of a variety of activities, both academic and social and is designed to provide you with an understanding of the Australian university system and living in Australia. We encourage you to take part in as many orientation activities as possible.

As a part of Orientation, the International Student Centre holds a welcome event at the beginning of each Study Period for new international students. This is a great opportunity to meet other students as well as meeting the friendly staff of the International Student Centre.

[www.jcu.edu.au/international/arrival](http://www.jcu.edu.au/international/arrival)



**DID YOU KNOW**



JCU's Townsville and Cairns campuses offer a special after-hours (nights and weekends) telephone hotline for international students. Students can access the number free of charge from an Australian landline phone by calling 1800 754 185.



# Accommodation



*Townsville and Cairns offer a range of housing options for students. Purpose-built student accommodation is available on campus in Townsville in halls of residence or colleges. In Cairns, privately owned and operated student residences are available near the campus.*

James Cook University's Accommodation Service helps students with on-campus accommodation in halls of residence and colleges, as well as in private rental or shared accommodation (off-campus). For students who prefer off-campus accommodation, the Service maintains a register of houses, units, apartments, shared accommodation, home stay and caretaker arrangements.

## Townsville Accommodation

On-campus accommodation is available at the Townsville campus for international students. Applications can be submitted by applying online through the JCU Accommodation Service website at [www.jcu.edu.au/accommodation](http://www.jcu.edu.au/accommodation)

A \$50 application fee applies for all students.

**JCU Halls of Residence** are managed by JCU:

- University Hall
- George Roberts Hall
- Western Courts
- Rotary International House

The halls provide accommodation for more than 800 students in a variety of full board and self-catering (Rotary International House only), single and twin-share rooms and townhouses [www.jcu.edu.au/jcuhalls](http://www.jcu.edu.au/jcuhalls)

**John Flynn College** provides catered accommodation for 200 male and female students on campus [www.johnflynn.org](http://www.johnflynn.org)

**St Mark's College** has catered accommodation for 153 male and female students <http://stmarks.jcu.edu.au>

**The Combined Catholic Colleges** of St Raphael and St Paul consist of catered single study/bedroom accommodation for 90 male and 60 female students in separate wings. St Raphael's College provides catered accommodation for 74 female students in single study/bedrooms [www.cathcollegesjcu.edu.au](http://www.cathcollegesjcu.edu.au)

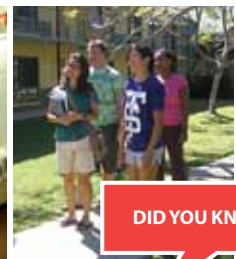
**Please note** students do not need to belong to any particular faith in order to stay at any of the JCU residential colleges.

## Cairns Accommodation

The following accommodation options are located near the Cairns campus and are independently owned and operated. In addition to this there are an abundant number of accommodation rental options in the area.

**Cairns Student Lodge:** Situated 400 metres (approximately 1300 feet) from the JCU Cairns campus. Fully catered accommodation is provided and facilities include Internet access, a swimming pool, barbecue area, volleyball courts, dining room, conference facilities and an on-site manager. Cairns Student Lodge is linked to the JCU campus by a pedestrian walkway/bicycle path [www.studentlodge.com.au](http://www.studentlodge.com.au)

**The Beaches Apartments:** Just a 10-minute walk from the JCU Cairns campus. Furnished two bedroom/two bathroom apartments in a secure, resort style complex with an on-site manager. For further information email [joeleen@glencorp.com.au](mailto:joeleen@glencorp.com.au)



**DID YOU KNOW**



**A wide range of quality housing is available for rent near the Townsville and Cairns campuses, and students may find that renting privately is an affordable alternative to living on campus.**

# Important Information

## 2012 Study Dates (Townsville and Cairns)

Teaching Period One 2012 (Semester One)	
Arrival service	29 January – 12 February
Orientation	13 – 17 February
Classes begin	20 February
Mid-semester recess	16 – 20 April
Classes end	25 May
Study/Exam Period	28 May – 16 June
Teaching Period Two 2012 (Semester Two)	
Arrival service	2 – 15 July
Orientation	16 – 20 July
Classes begin	23 July
Mid-semester recess	24 – 28 September
Classes end	26 October
Study/Exam Period	29 October – 16 November



In 2011, classes begin on 21 February (teaching period one) and 25 July (teaching period two). Other 2011 dates can be found online at [www.jcu.edu.au/international](http://www.jcu.edu.au/international)

### Singapore

Singapore operates a different academic calendar. Please check [www.jcu.edu.sg](http://www.jcu.edu.sg) for details.

## Academic Information

### Teaching Periods / Semesters

- Each study abroad term is 13 weeks of teaching, with a one-week recess in the middle and a one-week study vacation before the exam period.
- Block mode and intensive subjects (one to four-week intensive subjects) may be held before, in the middle of, or after the general JCU academic year (January, July or December).
- Final examinations cannot be rescheduled, and students must not pre-book travel home before the last day of their exams. All nursing science students should contact JCU prior to making any end of semester travel arrangements as most nursing (NS subjects) exams are held outside the published exam period and exam times cannot be changed.

### Credit points and subject selection

At JCU most individual subjects have a value of 3 credit points.

- A normal, full-time study load for a Teaching Period is four subjects (or 12 credit points).
- Enrolments of more than four subjects (or more than 12 credit points) in any given Teaching Period will attract additional pro-rata tuition fees.
- The minimum allowable enrolment for study abroad students at JCU is three subjects (or 9 credit points) in any Teaching Period. To choose your subjects and determine which semester and campus the subject is offered, please visit <https://secure.jcu.edu.au/app/studyfinder>

Each subject page will provide information on prerequisites required and on the bottom of the page there is a section called "Availabilities" which states which campus the subject is offered at and during what Teaching Period.

You can tell if a JCU subject is a first, second or third year subject by the first number in the subject code – ie: EV5209 is a fifth year subject.

### Undergraduate Study Abroad

Students are able to study 1st, 2nd and 3rd year subjects dependant on meeting the required pre-requisites for entry.

### Postgraduate Study Abroad

If a student has chosen at least one postgraduate 5th year subject they are required to meet the postgraduate academic entry requirements (page 13). Students can choose to study some 1st, 2nd and 3rd year subjects under this program dependant on meeting the required pre-requisites for entry. E.g. Biology.

### Subject pre-approval

Study abroad students do not have to pre-register for subjects but are encouraged to submit a list of subjects in which they would like to enrol. We will seek approval for enrolment in these

classes on your behalf, liaising directly with the academic advisors in subjects you have chosen to study.

Once you have decided to accept your offer to JCU you must number all subjects in order of preference and return your Subjects page. You will be enrolled into your top 4 subjects prior to your arrival at JCU. Further information on subject selection advice will be provided during the International Welcome Sessions.

- Pre-approved subjects and changes to subject selection can be made up to six weeks prior to the start of each teaching period/semester.
- Approval for additional subjects or subjects changes can be made during orientation week upon discussions with an academic advisor.



## Planning Your Budget

University study involves a range of expenses including living and study costs. Some are fixed and some will vary, depending on the type of course you are studying, and your lifestyle.

### Financial Aid and Scholarships

Students are advised to explore their options for loans, grants, subsidies, sponsorships, scholarships and awards within their home country prior to accepting an offer to study at JCU. JCU is familiar with some financial aid and scholarships that are available to students from specific nationalities and criteria:

#### USA

- US Federal Aid (Stafford/PLUS loans)
- US Veterans Affairs

#### Canada

- Canadian federal and provincial student loans (i.e. Ontario Student Assistance Program, etc)

#### Sweden

- CSN

#### Norway

- Statens Lånekasse

#### Denmark

- Statens Uddannelsesstøtte

#### Germany

- German study grant scheme (BAföG)

For more information on financial aid/loan programs please contact [ISCFinance@jcu.edu.au](mailto:ISCFinance@jcu.edu.au)

### Overseas Student Health Cover (OSHC)

Students are required to organise private health insurance before coming to study in Australia and are expected to maintain this insurance for the duration of their studies. Norwegian and Swedish citizens do not require OSHC. Students who arrive in Australia without a student visa will not be eligible for OSHC as a student visa is required before applying for OSHC. JCU organises OSHC membership for its students.

### Books and miscellaneous study expenses

Approximately A\$400 is required per teaching period/semester for books. Other study costs, depending on the course, may include: field trip costs, lab equipment, stationery, subject handbooks and calculator. It is also suggested that the costs for a computer/laptop be factored into your overall costs.

## Australian Visa Information

It is essential that you apply for an Australian student visa before arriving in Australia. To apply you need to contact your nearest Australian Embassy, Consulate or High Commission. Their locations worldwide are listed at [www.dfat.gov.au/missions](http://www.dfat.gov.au/missions)

You can also contact the Department of Immigration and Citizenship (DIAC). The DIAC website contains comprehensive information about applying for visas, student work rights and restrictions, health requirements, and FAQs (Frequently Asked Questions) about student visas: [www.immi.gov.au/immigration.htm](http://www.immi.gov.au/immigration.htm)

### APPROXIMATE LIVING AND STUDY COSTS\*

Item	Townsville/Cairns (AUS \$)
<b>Undergraduate Tuition</b>	\$8,700 per half year or \$17,400 per year
<b>Postgraduate Tuition</b>	\$9,500 per half year
<b>Overseas Student Health Cover</b>	\$245 for 1 Semester \$490 for 2 Semesters (commencing Feb) \$455 for 2 Semesters (commencing July)
<b>Books</b>	approximately \$400 per semester
<b>Accommodation (on campus)</b>	\$150–\$280 per week
<b>Accommodation (off campus)</b>	\$100 - \$150 per week (based on 3-4 students sharing)
<b>Food (on campus)</b>	minimal if living on campus
<b>Food (off campus)</b>	approximately \$75 per week
<b>Electricity (on campus)</b>	included in accommodation cost
<b>Electricity (off campus)</b>	approximately \$20 per week
<b>Transport/Travel (on campus)</b>	very little if living on campus
<b>Transport/Travel (off campus)</b>	approximately \$30–\$40 per week
<b>Miscellaneous</b>	\$70 per week (stationery, photocopying, printing, entertainment, laundry)
<b>University field trips</b>	varies by subject (see field trip information on pages 10-11 for an indication) or online at <a href="http://www.jcu.edu.au/international/studyabroad">www.jcu.edu.au/international/studyabroad</a>

Note: Semester/Teaching Period - refer to: [www.jcu.edu.au/international/fees](http://www.jcu.edu.au/international/fees) for further information on visa length OSHC (including Family OSHC).

\*Costs are guidelines only, given in Australian Dollars and subject to change.



### EXCHANGE AT JCU

JCU has partner universities around the world which form our international student exchange network. Students on exchange at JCU come through one of our partner universities on a tuition fee waiver, paying their home university tuition fees in place of the JCU study abroad fee. Exchange students are part of the Study Abroad program and receive the same excellent services and study opportunities available to all JCU students. Students should contact the International Exchange Office at their home institution to find out more.

# How to Apply

## Step 1

Select the duration, campus and year that you would like to study abroad at JCU. Then begin to complete the *JCU Study Abroad application form*.

If applying for one Teaching Period/Semester, please list a maximum of 6 subject names and codes in the subject approval section on the application form in order of preference. Alternatively, if applying for two Teaching Periods/Semesters please select a maximum of 12 subject names and codes. A comprehensive list of JCU subjects can be found at <https://secure.jcu.edu.au/app/studyfinder> (please refer to additional subject information on page 16).

### Application deadlines:

- 1 January for Teaching Period 1 (Semester 1)
- 1 June for Teaching Period 2 (Semester 2)
- Late applications will be considered on a case-by-case basis.

## Step 2

Send your completed Study Abroad application form with all supporting documentation, including certified academic transcripts and English language proficiency (if required) to James Cook International or lodge your application with one of JCU's authorised overseas representatives. Your academic transcripts must be accompanied by the grading scale/key used at the institution where you have undertaken your studies. Overseas representative details can be found at: [www.jcu.edu.au/international/jcurepresentatives](http://www.jcu.edu.au/international/jcurepresentatives)

If documentation is in a language other than English, an official certified translation must be included and translated by a JCU overseas representative, the issuing institution or by an official translating service.

## Step 3

JCU will assess your application based upon academic and English entry requirements for the Study Abroad program (refer to page 13).

## Step 4

If your application is successful, we will generate an electronic Offer which you will receive by e-mail. The Offer includes:

- name and duration of the study abroad program you have been accepted into;
- tuition fees and other costs;
- Subject approval outcomes; and
- Other important information such as preparing for arrival and Overseas Student Health Cover

## Step 5

Once you have received your Offer, please complete and sign the Acceptance and Payment Agreement and return it with your subject preferences (numbered in order of preference) to James Cook International along with any payment as set out in your Offer letter.

**Please note:** You can send your Acceptance and Payment Agreement form to confirm your intention to study at JCU whilst waiting to receive your confirmation of pre-approved subjects. As soon as your subjects have been pre-approved by our academic advisors you will receive an update regarding your subject approval outcomes - you must confirm your subject preferences prior to arrival.

## Step 6

We will issue you an electronic Confirmation of Enrolment (eCOE). This is the document you will need to obtain a student visa for Australia.

## Step 7

Use your eCOE to obtain a student visa from your nearest Embassy or Consulate in your home country.

## Step 8

Once you have a student visa, you are ready to begin your study at JCU.

### DID YOU KNOW

You can also apply online or download an application form at [www.jcu.edu.au/international/apply](http://www.jcu.edu.au/international/apply)

### CHECKLIST

Make sure you have included all required documents before sending your application to JCU. Check that you have:

- ✓ Answered all questions
- ✓ Included all certified academic transcripts and certificates
- ✓ Supplied English language test results (if applicable)
- ✓ Read and signed the declaration
- ✓ Made a copy of all documents for your records
- ✓ Once complete, please forward your application to your JCU campus of choice (details on back of application form)



## Application for Admission to the Study Abroad Program

For Study Abroad and Exchange Students - Undergraduate or Postgraduate Level

PERSONAL DETAILS										
Family Name					Title e.g. Mr/Mrs/Dr					
Given Names					Male <input type="checkbox"/> Female <input type="checkbox"/>					
Permanent address in home country										
Telephone number in home country										
Fax number in home country										
Address (where we can contact you about your application). If applying through an agent, please put the agent's details here.										
Country in which you are submitting this application										
Telephone			Mobile/Cell Phone				Fax			
Email (Where we can contact you about your application)										
Date of Birth		Day		Month		Year				
Citizenship					Country of Birth					
Do you hold a current Australian visa?			<input type="checkbox"/> Yes		<input type="checkbox"/> No		If yes, please give category of visa			
Will you be bringing family members on a dependant student visa?					<input type="checkbox"/> Yes		<input type="checkbox"/> No			
ENGLISH LANGUAGE PROFICIENCY										
English is the main language spoken in my home					<input type="checkbox"/> Yes		<input type="checkbox"/> No			
If no, please indicate language										
<input type="checkbox"/> I will have / or have taken an		<input type="checkbox"/> IELTS test		<input type="checkbox"/> TOEFL test		within the past two years (please tick appropriate box)				
on		Day		Month		Year		<i>Please attach original documentation</i>		
<input type="checkbox"/> I have undertaken studies (secondary/high school/university) for a minimum of two years in which the language of instruction was English. <i>Please attach documentary evidence.</i>										
STUDY ABROAD PROGRAM										
Program Type		<input type="checkbox"/> Study Abroad		<input type="checkbox"/> Exchange		Level		<input type="checkbox"/> Undergraduate		<input type="checkbox"/> Postgraduate
Duration of Program		<input type="checkbox"/> One Teaching Period/Semester				<input type="checkbox"/> Two Teaching Periods/Semesters (only available for undergraduate study abroad)				
I wish to study at		<input type="checkbox"/> Townsville		<input type="checkbox"/> Cairns		<b>PLEASE NOTE</b> - NOT ALL SUBJECTS AVAILABLE ON BOTH CAMPUSES				
I would like to start my studies in Teaching Period				<input type="checkbox"/> One (February)		<input type="checkbox"/> Two (July)		Year		

## EDUCATIONAL QUALIFICATIONS

NAME OF SCHOOL OR INSTITUTION	NAME OF QUALIFICATION OR DEGREE	YEARS ATTENDED (MONTH/YEAR TO MONTH/YEAR)	COURSE COMPLETED (YES/NO)

Please attach certified copies of transcripts of all academic records. (A certified copy means a stamped photocopy signed by a public notary or institution representative or authorised JCU agent as being a true and accurate record of the original document). All documents must be translated into English by the issuing institution or by an official translating service.

## SUBJECT APPROVALS

Please list a maximum of 6 subjects (one Teaching Period/Semester) or 12 subjects (two Teaching Periods/Semesters) and the corresponding subject code that you would like to enrol in at JCU, in order of preference. For JCU subjects within a specific study area please view the 'Subject Search' at [www.jcu.edu.au/courses](http://www.jcu.edu.au/courses).

**Note:** Entry to subject codes 2000-5000 may be restricted to students who have previously completed studies in the same academic area.

SUBJECT NAME	SUBJECT CODE
Example: Rainforest and Ecosystems	BZ3210:03

## DECLARATION

### DECLARATION (All applicants must complete)

I declare that the information I have supplied on the application form is, to the best of my knowledge, complete and correct. I acknowledge that my application for admission is subject to acceptance by the University which has power to impose conditions. I further acknowledge that in the event my application for admission as a student at the University is accepted by the University, and in consideration of provision of educational resources by the University, I will be bound by the provisions of the relevant student handbooks, statutes, rules and policies of the University as are in force from time to time, and will be subject to the lawful instructions of officers of the University.

#### PRIVACY

Personal information supplied on this form will be handled in accordance with JCU's Privacy Policy (available at [www.jcu.edu.au](http://www.jcu.edu.au)).

I acknowledge that this information may be provided to other areas of JCU and to third parties for administrative and legislative purposes (under the ESOS Act 2000 and the National Code), including but not limited to the JCU Student Association; JCU's educational representatives and business partners; Australian Commonwealth and State agencies; other academic institutions to verify my previous qualifications; the Fund Manager of the ESOS Assurance Fund; and my Overseas Student Health Cover (OSHC) provider.

Signature

Date

Please send all completed forms to one of the following JCU locations, or to one of JCU's approved agents, listed online at: [www.jcu.edu.au/international/jcurepresentatives](http://www.jcu.edu.au/international/jcurepresentatives)

#### Townsville and Cairns campuses

Study Abroad Office  
James Cook International  
Townsville QLD 4811  
Australia  
Phone: +61 7 4781 5601  
Fax: +61 7 4781 5988  
Email: [studyabroad@jcu.edu.au](mailto:studyabroad@jcu.edu.au)

#### Singapore campus

Admissions Office  
James Cook University Singapore  
600 Upper Thomson Road  
Singapore 574421  
Phone: +65 6576 6833  
Fax: +65 6455 2833  
Email: [admissions@jcu.edu.sg](mailto:admissions@jcu.edu.sg)



# Getting to James Cook University

## Townsville

Three airlines (Qantas, Virgin Blue and Jetstar) fly from Brisbane (the capital of Queensland) to Townsville several times a day and there are numerous flights from all around the world into Brisbane. Another option for getting to Townsville is flying directly to Cairns and then taking the 50-minute shuttle flight to Townsville. Students at the Townsville campus are strongly recommended to fly into Townsville, as it is a 4-hour drive from Cairns and a 16-hour drive from Brisbane. There are also regular, direct flights from Sydney and Melbourne into Townsville.

## Cairns

Cairns has Australia's fifth busiest international airport. There are direct flights from Japan (four cities), Hong Kong, Papua New Guinea, New Zealand, Micronesia, Bali and Singapore, with more routes planned for the future. Numerous airlines fly from Sydney and Brisbane into Cairns daily.

## Singapore

Singapore is an international destination with daily flights to and from the citystate from all over the world.



## Where we are

By Air	
Townsville to	
Cairns	50 minutes
Brisbane	1 hour 45 minutes
Sydney	2 hours 45 minutes
Melbourne	3 hours 30 minutes

By Road	
Townsville to	
Cairns	4 hours
Brisbane	16 hours
Sydney	27 hours
Melbourne	31 hours

PHOTOS: Tourism Queensland, Insight Creative, Rob Parsons and Andrew Rankin Photography

DESIGN: Zephyrmedia

James Cook University 2012 Study Abroad Prospectus is published by James Cook International, James Cook University, March 2011. This publication is intended as a general introduction to James Cook University. All care has been taken to ensure information is correct at the time of printing. If you wish to apply to the University, contact any of its offices to confirm current admission requirements. The University reserves the right to alter any admission requirement or degree included in this publication without prior notice.

For information about undergraduate studies, see the separate publication James Cook University 2012 International Undergraduate Prospectus.

CRICOS Provider Code: 00117J

# Contact us

## Townsville

James Cook International  
Townsville QLD 4811  
Australia

Phone: + 61 7 4781 5601

Fax: + 61 7 4781 5988

Enquire online at: [www.jcu.edu.au/international](http://www.jcu.edu.au/international)

## Cairns

James Cook International  
Cairns QLD 4870  
Australia

Phone: + 61 7 4042 1438

Fax: + 61 7 4042 1580

Enquire online at: [www.jcu.edu.au/international](http://www.jcu.edu.au/international)

## Singapore

600 Upper Thomson Road  
Singapore 574421

Phone: + 65 6576 6833

Fax: + 65 6455 2833

Email: [isc@jcu.edu.sg](mailto:isc@jcu.edu.sg)

Web: [www.jcu.edu.sg](http://www.jcu.edu.sg)