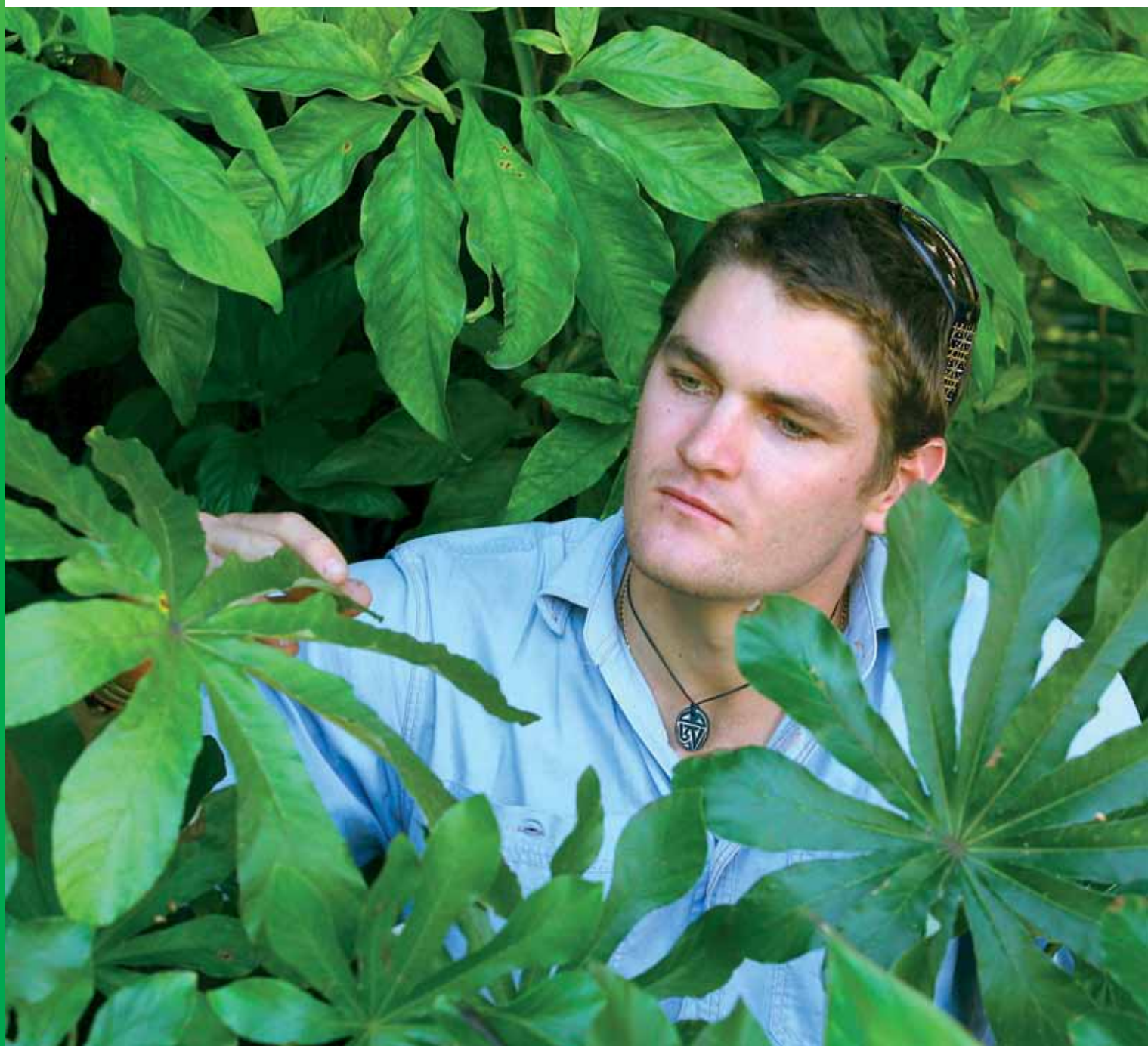


# International Postgraduate Prospectus **2013**





## WELCOME

James Cook University is committed to creating a brighter future for life in the tropics world-wide through graduates and discoveries that make a difference. It is our aim to inspire you to make a difference in your chosen field and in your community.

JCU is Queensland's second oldest university and was established in 1970 to be Australia's "University for the Tropics". Our mandate is to conduct research and teaching on areas of particular relevance to the tropics, the home of more than 40 percent of the world's population and around 80 percent of its biodiversity. In 2011 JCU was placed in the top 400 universities in the world based on research excellence\*. JCU has been judged to be at world class level or above in 17 areas including geology, ecology, oceanology, neurosciences, materials engineering, zoology and tourism and is the only university to be judged to be well above world class in environmental science and management and fisheries science.

Many specialist research centres and institutes are based at JCU and provide a hub for research and innovation. The Australian Research Council's Centre of Excellence for Coral Research Studies attracts the world's leading researchers to the University and its real-life laboratory – the Great Barrier Reef. The Australian Tropical Science and Innovation Precinct, also located on the Townsville Campus, will become the national headquarters for research on the sustainable use of natural resources in the tropics.

The Cairns Institute complements and adds a vital human, social and cultural dimension to the University's other renowned research centres through advanced studies and research in sustainable industries, economies, people and societies in the tropics. The Cairns Institute supports existing research strengths in education, anthropology, human geography, linguistics and historical studies.

As a postgraduate student at JCU you will enjoy a supportive study environment, highly qualified teaching and supervision and exceptional facilities. We offer students a comprehensive range of courses and opportunities to work with world-class researchers. We know that employers value JCU graduates for their combination of theoretical and practical experience.

More than 5,000 international students from many countries are enjoying the benefits of studying with JCU right now and our alumni are working throughout the world. Please take the time to discover our campuses, facilities and the large range of courses that are outlined in this prospectus.

I hope I will have the opportunity to welcome you to the University.

**Professor Sandra Harding**  
Vice-Chancellor and President

JAMES COOK UNIVERSITY

# International Undergraduate Prospectus 2013

## OUR LOCATIONS

AUSTRALIA

Singapore



# Contents

Welcome from the Vice-Chancellor	Inside front cover
James Cook University – A Brighter Future	2

## Our Locations

Townsville	4
Cairns	6
Singapore	8
Brisbane	9

## Courses, Fees and Entry Requirements

Postgraduate Study Options	10
World-class Research Facilities	12
Courses and Fees	16
Faculty of Arts, Education and Social Sciences	25
Faculty of Law, Business and the Creative Arts	31
Faculty of Medicine, Health and Molecular Sciences	39
Faculty of Science and Engineering	45
Distance and Flexible Learning Degrees	52
Academic and English Entry Requirements	54
JCU Pathway College	55

## Life on Campus

Student Services	56
Accommodation	58

## Important Information

Study Dates	60
Financial Aid and Scholarships	60
Planning your Budget	61
Australian Visa Information	61
How to Apply	62
Postgraduate Coursework Application Form	63
Postgraduate Research Application Form	65
Academic Referee's Report	67

Getting to James Cook University	Inside back cover
Contact Us	Back cover



Cairns



Townsville



## DID YOU KNOW



JCU is recognised around the world for its expertise in marine biology, environmental studies, tropical health and tourism.

# James Cook University

## *A brighter future for life in the tropics, world-wide*

*James Cook University (JCU) is the second oldest university in Queensland and Australia's leading university in the tropics. Offering excellence in teaching and research, JCU is a vibrant three-campus university with main campus locations in the tropical Queensland cities of Townsville and Cairns and the city-state of Singapore. Some JCU degrees are also offered at JCU Brisbane, a campus operated by Russo Higher Education Pty Ltd in Queensland's capital city of Brisbane along with education partners in Asia and the Pacific. Total student enrolments are more than 18,000 and growing, including over 5,000 international students from 100 countries. There are over 300 programs available to international students to study at JCU.*

### **Global quality degrees**

James Cook University offers a full range of courses spanning the arts and humanities, business, creative arts, education, engineering, health sciences, information technology, law, marine biology, medicine, sciences, social sciences and veterinary science. This broad range of study areas means you can usually combine areas of personal interest into a customised study plan. Our degrees are accredited by leading professional organisations and are internationally recognised.

### **Practical focus**

JCU courses will give you opportunities for hands-on experience from internships, vacation, placements, capstone subjects, and real-world projects with business, industry and government organisations, to field trips in the natural environments of northern Queensland. JCU works with employers and industry groups to make sure our courses reflect best industry practice.

### **Supportive study environment**

JCU recognises that knowledge has the power to change lives and strives to create a student centred learning environment where students learn to take full advantage of their university experience. With friendly campuses, smaller class sizes, accessible teaching staff, and excellent support services including study skills and student mentor programs, JCU students receive the personal attention they need to achieve their best.

### **Teaching excellence**

Study with us and you will learn from expert teachers. Over the past five years, JCU academics have won more than 39 citations for teaching excellence from the Australian Teaching and Learning Council – more teaching awards than many larger universities. JCU teaching staff are highly qualified and dedicated. Innovation in the use of teaching styles and technologies is fundamental to JCU's approach to teaching.

### **Graduates and discoveries that make a difference**

James Cook University is about people and place, and we adopt new methods, new approaches and new technologies to help our students develop the skills, abilities and knowledge base they need to succeed. We bring a diverse array of knowledge, skills and experience through our staff and the broader community to fulfil the potential of our university.

### **Research intensive**

As a leading research university, JCU provides excellent facilities for teaching and learning. The unique location of James Cook University allows nationally significant and internationally recognised research to be conducted by both staff and students. Much research focus is based on the industries and environments of northern Australia including marine biology, biodiversity, tropical environmental studies, earth sciences/geology, engineering, tropical health and tourism. Total research related income at JCU reached \$52.6 million in 2010, including funding from

government, competitive grants and industry. This is expected to rise strongly in the coming years. JCU is a member of the national alliance, Innovative Research Universities and is one of the world's leading research universities in the tropics.

### **A natural choice for study**

Significant for JCU students in Australia is the university's unique natural location. Visitors and residents enjoy a huge range of leisure activities including diving on the Great Barrier Reef, visiting the ancient rainforests and waterfalls in the many national parks, bushwalking, camping, fishing and visiting historic outback regions or the picturesque farming villages of the Atherton Tablelands. At JCU's Singapore campus, students will experience quality Australian education in a dynamic yet safe Asian metropolis. Students at the Brisbane campus will experience one of Australia's most liveable cities and have easy access to the coastal regions of the Sunshine Coast and Gold Coast.



## DID YOU KNOW



Our professional coursework programs are accredited by industry and professional associations, and many professionals are guest lecturers for our postgraduate programs.

## DID YOU KNOW



If you are planning research studies with JCU, your supervisor is likely to be internationally recognised in their field.

## DID YOU KNOW

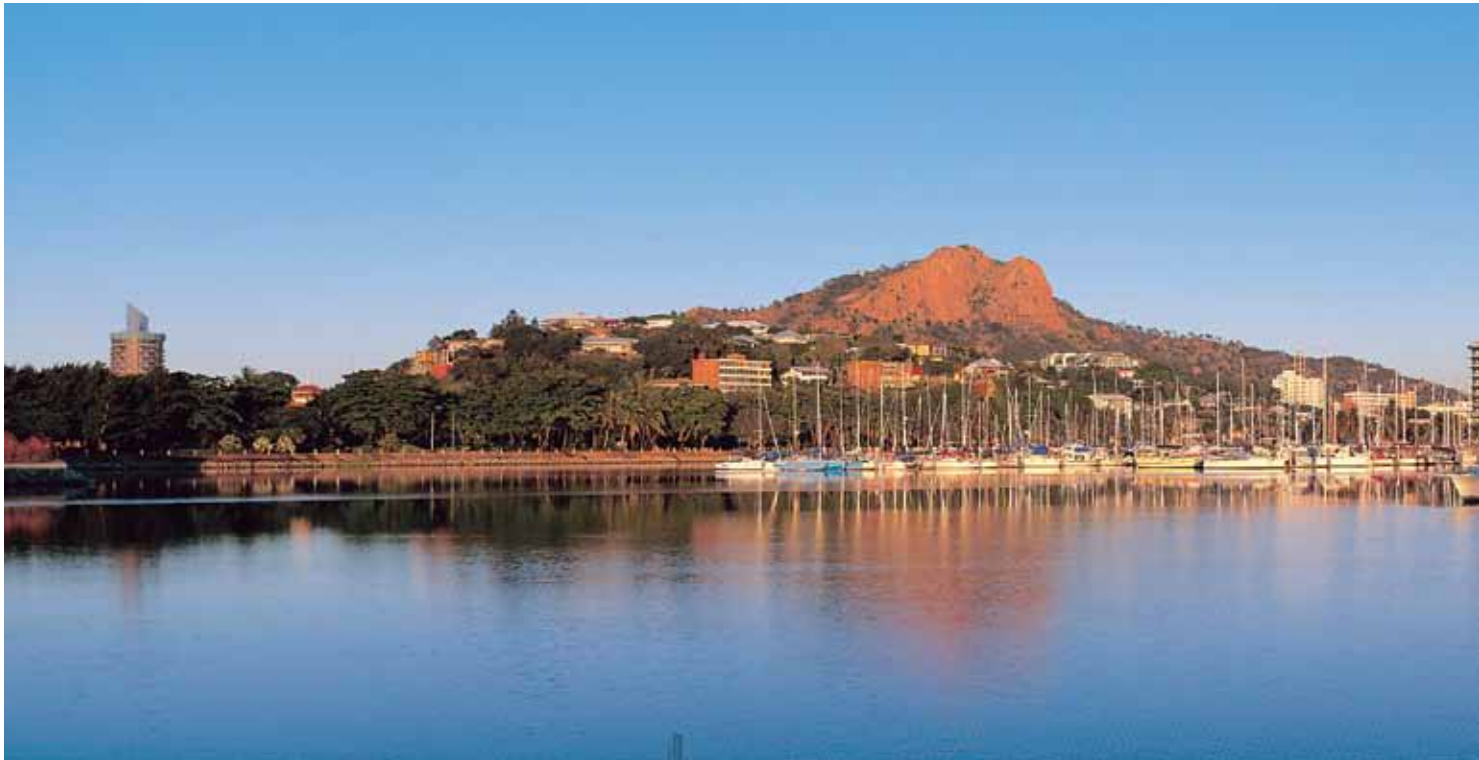


JCU is recognised around the world for its expertise in marine biology, environmental studies, tropical health, and tourism. JCU is ranked 1st in the world for citations in the field of coral reef ecology, the top three in its fields of research strength in ecology and environment, plant and animal sciences and geosciences. JCU is also ranked as Australia's leading university in environmental science and management and fisheries science research\*\*. JCU is also ranked among the top 12 tourism education institutions in the world.

\*\* Excellence in Research Australia 2010 national report

# Our locations

## Townsville



### The City

Townsville is the major administrative centre of north-eastern Australia. Its varied and fast growing economy means that there are many employment opportunities in the city, both for JCU graduates and for students seeking part-time work to help finance their study. The city is also a stepping off point for visiting the Great Barrier Reef – two hours away by boat, and is one hour from the Wet Tropics rainforests of Paluma. The resort regions of Mission Beach and the Whitsunday islands are also within easy reach. Students have a wealth of sporting, cultural and entertainment options available.

[www.townsville.qld.gov.au](http://www.townsville.qld.gov.au)  
[www.townsvilleenterprise.com.au](http://www.townsvilleenterprise.com.au)

### The Campus

James Cook University's largest campus, with over 12,000 students including approximately 1,500 enrolled international students, is located in a peaceful 386-hectare setting of natural bush and parkland full of native Australian flora and fauna. The campus is nestled in the residential suburb of Douglas, close to the Ross River, 13 kilometres (8 miles) from the city centre.

The Townsville campus offers a range of activities and facilities for students including

- retail stores
- cafes and food and drink outlets
- bookshop
- gym, sporting facilities and many active clubs and societies
- swimming pool
- performance space
- accommodation service
- counselling and career services
- main JCU library

There is also a student mall with dining options, a post office and hairdresser on campus. The Medical Centre is situated next to Townsville Hospital, opposite the campus and a variety of sporting clubs and student societies are available for students to join. Students have round-the-clock access to the university's wireless computer network that covers the majority of the campus. Students from diverse backgrounds live on campus in colleges and halls of residence, and with free parking available in several areas of the university, on-campus childcare options and a spacious layout, the campus has a true community atmosphere. New developments are underway as part of JCU's Discovery Rise project.

### DID YOU KNOW



The beautiful Townsville and Cairns campuses are home to a diverse range of plant and animal species. Learn more at our interactive Discover Nature website

[www.jcu.edu.au/discovernature](http://www.jcu.edu.au/discovernature)



*Townsville is a thriving coastal city and port with a population of over 181,000 making it Australia's largest tropical city. Situated in the dry tropics, most days are sunny, with an average daytime temperature of between 25°C-30°C (77°F-86°F).*



# Our locations

## Cairns



### The City

Cairns is one of Australia's most popular tourist destinations. Cairns has a diverse population of around 150,000. With the Great Barrier Reef only 1.5 hours away by boat, there are many opportunities for reef and island visits and diving. The city has a cosmopolitan atmosphere with many cafés, restaurants, markets and nightclubs. Students looking for part-time work during their studies in Cairns will find a variety of part-time jobs available in tourism, hospitality, retail sales and business administration.

Thanks to the thriving business in international visitors, many employers value part-time workers with foreign language skills.

[www.cityofcairns.qld.gov.au](http://www.cityofcairns.qld.gov.au)  
[www.cairnsgreatbarrierreef.org.au](http://www.cairnsgreatbarrierreef.org.au)

### The Campus

The James Cook University Cairns campus combines a spectacular natural setting with modern and innovative teaching facilities. The campus nestles below rainforest-covered mountains in the suburb of Smithfield, 15 kilometres (approximately 9 miles) north of the city centre and near the popular northern beaches suburbs. The campus is served by regular buses to the city centre and the nearby Smithfield shopping centre and residential areas.

With over 4,000 students enrolled, including more than 380 international students, the campus offers the latest teaching and learning facilities including an impressive library and information technology building, some of

the largest science-teaching laboratories in the state and specialist health and science research facilities. A \$30 million Dentistry teaching building opened in 2010.

The Cairns campus offers a range of activities and facilities for students including

- student eatery, café and bar
- bookshop
- sporting facilities
- JCU Pathway College
- amphitheatre
- Student Association Office

Students enjoy small classes and a friendly campus atmosphere. Modern student accommodation is also situated near the campus.

### DID YOU KNOW



The Great Barrier Reef is one of the world's greatest natural wonders and is home to the largest coral reef ecosystem.





*Over two million visitors come each year to enjoy the spectacular natural attractions and activities on offer, which include scuba diving and snorkelling on the Great Barrier Reef, exploring ancient rainforests, rivers and waterfalls, national parks, Port Douglas and Mission Beach.*



# Our locations

## Singapore



*Singapore offers the best of both worlds, combining a cosmopolitan and sophisticated city with Asian traditions and heritage.*

### The City

Singapore's unique characteristics and highly accessible infrastructure make it one of the best places to study and work in Asia. Aiming to be the educational hub and global schoolhouse of the region, this multi-cultural country provides you with an exciting platform for personal growth, professional fulfillment and cross-cultural interaction.

### The Campus

JCU Singapore is fully owned by James Cook University Australia. The university established JCU Singapore in 2003 as part of its expressed intent of internationalising its activities and in pursuit of its vision of "A brighter future for life in the tropics, world-wide". The University offers a suite of university level programs at the JCU Singapore campus.

Student enrolment at the campus has grown rapidly from 50 students in 2003 to approximately 2500 students in 2011. The campus is truly multicultural with students from Singapore and across Asia, in particular China, India, Indochina, Indonesia and Malaysia. Additionally students enroll from Europe and the United States. Facilities include lecture and seminar rooms, a fully equipped library, computer laboratories, an onsite bistro and access to a variety of sporting facilities.

All courses are registered with the Council for Private Education (Registration No. 200100786K) and the operations are governed by EduTrust. In 2008, the campus achieved the Singapore Quality Class for Private Education Organizations accreditation.

JCU Singapore provides the opportunity for international and local students to earn a "real Australian degree" without leaving Singapore.



### SINGAPORE COURSES AND FEES

Course	Total Tuition Fees#	Fast-track duration in years*
Graduate Certificate of Career Development	S\$10,000	1
Master of Business Administration [MBA] (Accounting, General, Human Resource Management, Marketing)	S\$30,000	1
Master of Education	S\$20,000	1
Master of Guidance and Counseling	S\$30,000	1
Master of Information Technology (Business Informatics, Computing and Networking, Interactive Technologies and Games Design)	S\$30,000	1
Master of Information Technology / MBA	S\$40,000	1.3
Master of International Tourism and Hospitality Management	S\$30,000	1
Master of Psychology	S\$38,379	1.25
Doctor of Psychology	S\$56,613	1.75

Duration of full program, assuming students have not been granted credit exemption. Note: Most JCU Master Degrees by coursework cover twelve subjects (12) over the duration of three (3) trimesters. Exceptions are joint degrees which have sixteen (16) subjects over the duration of four (4) trimesters. # Tuition fee in Singapore Dollars including prevailing 7% Goods and Services Tax (GST)

### DID YOU KNOW



There are various tourist spots to visit such as Sentosa Island, Jurong Bird Park, Singapore Zoo, East Coast Beach, Chinese Gardens, Night Safari, Chinatown, Little India and many more.

# Our locations Brisbane

*Brisbane is a modern and diverse subtropical metropolis offering visitors a stimulating experience in a warm, friendly and relaxed environment.*



## The City

Brisbane, Australia's New World city, is a leading destination for international education, business, investment and major events. This sunshine state is rapidly emerging as a diverse and energised global city with a \$104 billion economy. Well serviced by city infrastructure, Brisbane is home to cultural precincts of theatres, museums and international cuisine. This city is also a multi-cultural hub of creativity and invention, all set in a sub tropical climate ideal for the outdoor lifestyle.

## The Campus

Nestled in the heart of this capital city and a short distance from the riverfront is JCU Brisbane, the University's city campus, operated by Russo Higher Education Pty Ltd.

Surrounded by skyscrapers housing both Australian and international businesses, the Brisbane campus provides the ideal setting for international students wishing to gain workplace exposure through academic and non academic work experience programs.

## Work-Integrated Learning

Work-Integrated Learning (WIL) is learning through experience. At JCU Brisbane, this learning is maximised using a range of activities and experiences to expose students to a variety of authentic industry-related situations. These opportunities may include a professional internship, working in a group on a community project, through to visiting an Australian business or having corporate leaders work with students in the classroom.

## \$A1,000 High Distinction Academic Award

This award is given to all students who achieve a High Distinction score (typical grade of 85% and above) in their subjects.

## Employment and Careers Services – through Joblinx

Exclusive to JCU Brisbane students, Joblinx services include sourcing part-time, casual and graduate employment, as well as providing training, professional development and work experience programs.

## DID YOU KNOW



JCU Brisbane offers an Internship program that is a recognised subject in select master degrees.

## BRISBANE COURSES AND FEES

Course	Annual Tuition Fees#	Standard duration (in trimesters)
Master of Business Administration [MBA] (General, Managerial Accounting, Marketing)	A\$21,000	4
Master of Information Technology (Business Informatics)	A\$22,000	4
Master of Information Technology / MBA	A\$21,000	6
Master of International Tourism and Hospitality Management	A\$22,000	4
Master of International Tourism and Hospitality Management / MBA	A\$22,000	6
Master of Professional Accounting	A\$22,000	4
Master of Professional Accounting / MBA	A\$22,000	6

For information about Graduate Certificate and Graduate Diploma programs in these study areas please contact JCU Brisbane (details on back cover of prospectus). # Tuition fee in Australian dollars.

# Postgraduate Study Options



The University's tropical focus underpins its research mission, which has two complementary themes reflecting the University's tropical and regional location. Our research and research training is concentrated on issues of global significance to industries and communities in the tropics. This focus is complemented by a commitment to the delivery of research benefits to the northern Queensland community.

## Key areas of particular teaching and research strength

JCU has a strong teaching and research profile in Australia and abroad. Areas of strength include

- Climate change
- Disaster studies
- Earth sciences
- Education
- Engineering
- Environmental science and management
- Indigenous Australian studies
- Marine science, particularly marine biology (including coral reef ecology)
- Molecular sciences
- Native title law
- Social sciences (People, Identity and Place)
- Tourism
- Tropical biology and conservation (including rainforest science)
- Tropical freshwater research
- Tropical health and medicine, and disciplines related to medicine
- Tropical science

## Coursework or Research

There are two main kinds of postgraduate study: coursework and research.

### Coursework

Coursework study at postgraduate level is a continuation of the type of study usually found in a Bachelor degree, but at a more advanced level. Students complete a set course of postgraduate subjects and attend lectures, go to tutorials, hand in assignments and sit examinations. A small research thesis may form a part of the degree (up to one third), but the program is fundamentally coursework.

### Research

Research degrees are a program of supervised original research in a chosen discipline. Research qualifications are awarded following the completion of a major thesis, involving original research, under the supervision of a senior academic. When undertaking research programs, learning is undertaken independently and there are no lectures or classes.

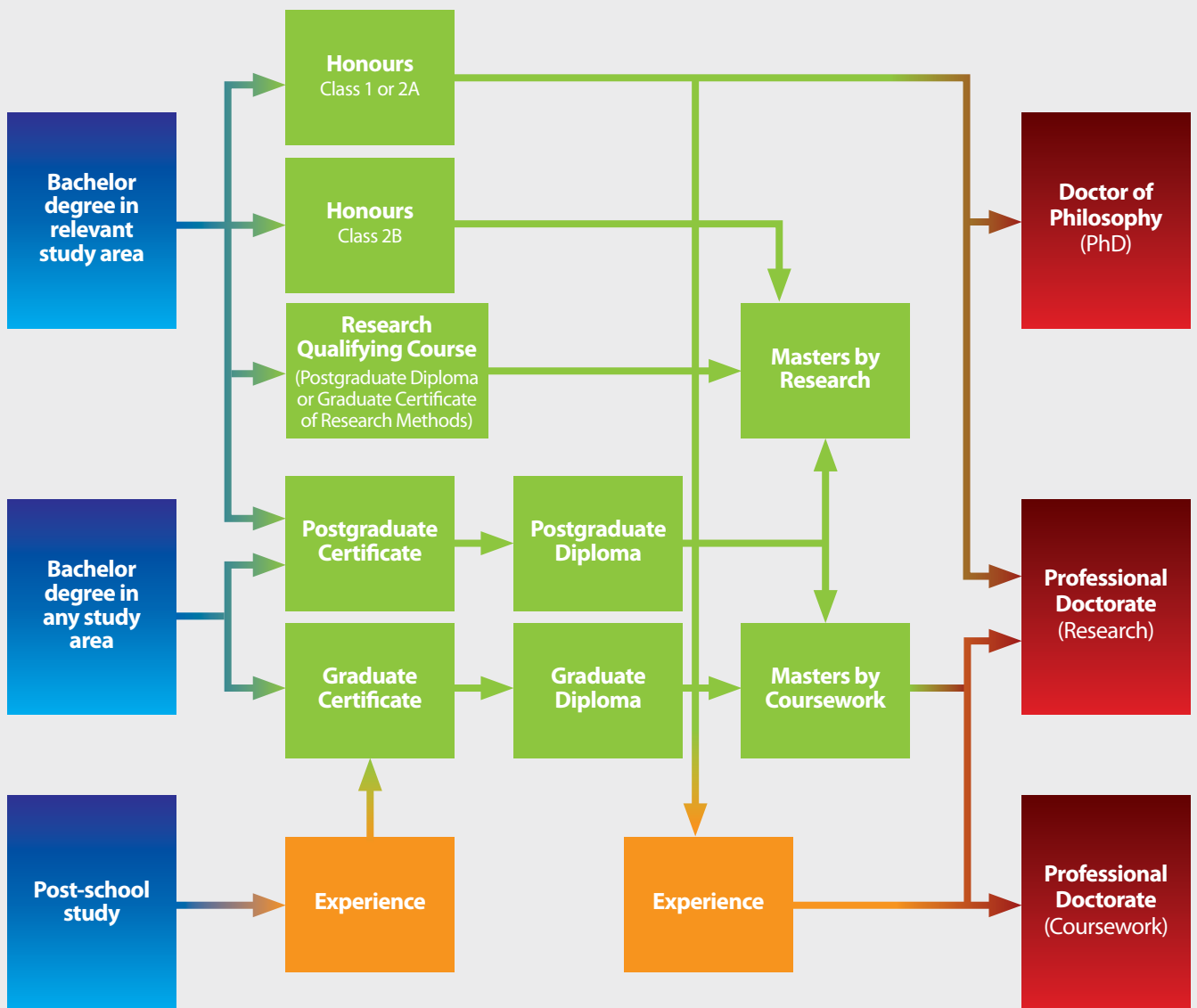
## DID YOU KNOW

A JCU qualification is internationally recognised for excellence. The Institute of Higher Education, which compiles the Academic Ranking of World Universities, ranks JCU as one of the world's leading academic and research institutions, and in 2011 placed us in the top 301 – 400 grouping of more than 14,000 universities in the world.\* In Asia and the Pacific, we are placed in the top 70.\*\* Only one other university in Queensland makes this prestigious list.

JCU is ranked 2nd in the world in climate change research (after the Smithsonian Institute) for maximum ISI (Institute for Scientific Information) citations per paper, NASA is ranked 3rd (Thomson Reuters citation impact ranking).

JCU is a member of the select group of Innovative Research Universities.

\* 2011 Academic Ranking of World Universities, published by the Center for World-Class Universities of Shanghai Jiao Tong University  
\*\* Excellence in Research Australia 2010 national report



The above diagram illustrates some possible pathways for postgraduate students at James Cook University. Entry to programs is dependent upon the specific entry requirements for each course, and in the case of research programs, the availability of supervision and project funding. Progression along pathways is contingent on these criteria and on students meeting specific performance standards.

JCU is home to an above average proportion of academic staff with PhDs, with most lecturers involved in active research and many professors leaders in their fields including

6 JCU academics are among the top 10 cited scientists in Marine Science, 4 of whom are within the School of Marine and Tropical Biology.

JCU is ranked among the top 12 tourism education institutions in the world and 4 of the top 50 Tourism scholars in the world are at JCU, giving the university one of the highest concentrations of top tourism research.

JCU is ranked #1 in the world for coral reef ecology citations and 1st in Australia for Environmental Ecology citations (Thompson's Essential Science Indicator).

# World-class Research Facilities

## Orpheus Island Research Station

Orpheus Island is an inshore island in the Great Barrier Reef Marine Park in the Palm group of islands. JCU's research station is set within a two-hectare site surrounded by the Orpheus Island National Park. The research station attracts national and international experts with a diversity of interests ranging from coral reef ecology to geology. With a recent \$4 million upgrade, the research complex includes villa and dormitory accommodation, state-of-the-art temperature control rooms, outdoor aquaria, communication facilities including wireless hubs, well equipped wet and dry laboratories, a dive facility, lecture theatre, research vessels and much more.

[www.jcu.edu.au/oirs](http://www.jcu.edu.au/oirs)



# Daintree Rainforest Observatory

Situated in the World Heritage listed Wet Tropics region at Cape Tribulation, the Daintree Rainforest Observatory offers scientists from throughout the world the opportunity to conduct a range of canopy related projects. The forests support about 800 species of vertebrates, many of which are endemic, and about 5000 species of plants, of which 1300 are endemic. The Daintree Rainforest Observatory is the only research station of this type in Australia. It is a partner in the Global Canopy Program – an international network of research, education and conservation exploring the function of forest canopies in the maintenance of biodiversity and the influence of forests on climate change.

[www.jcu.edu.au/canopycrane](http://www.jcu.edu.au/canopycrane)



# World-class Research Facilities

## Advanced Analytical Centre

The Advanced Analytical Centre (AAC) is a central facility at JCU that is managed by the JCU Division of Research and Innovation. The AAC proudly supports teaching and research at JCU by providing a wide range of analytical facilities backed by experienced and professional staff. The analytical equipment is leading edge and the combined resources of the Centre offers the only facilities of this kind north of Brisbane. Equipment includes:

- Scanning Electron Microscopes (SEM)
- Electron Microprobe (EPMA)
- Laser Confocal Microscope
- Atomic Force Microscope (AFM)
- Laser Ablation ICP-Mass Spectroscopy
- X-ray Fluorescence Spectrometer (XRF)
- Gas and liquid chromatography
- Genetic analysis

[www.jcu.edu.au/aac](http://www.jcu.edu.au/aac)

## Australian Tropical Sciences and Innovation Precinct

James Cook University (JCU) and the Commonwealth Scientific and Industrial Research Organisation (CSIRO) are working together to create a world-class research hub - the Australian Tropical Sciences and Innovation Precinct (ATSIP) at JCU's Townsville campus. The partnership between JCU and CSIRO is part of an unincorporated joint venture called the Tropical Landscapes Joint Venture (TLJV). ATSIP will provide purpose-built world class research facilities. CSIRO and JCU have each committed significant resources to the development of this precinct. Additional funding has been supplied from the Queensland State Government Smart State Research Facilities Fund. The vision is for ATSIP to become the Australian headquarters for research underpinning the sustainable use of natural resources in the tropics.

[www.jcu.edu.au/atsip](http://www.jcu.edu.au/atsip)



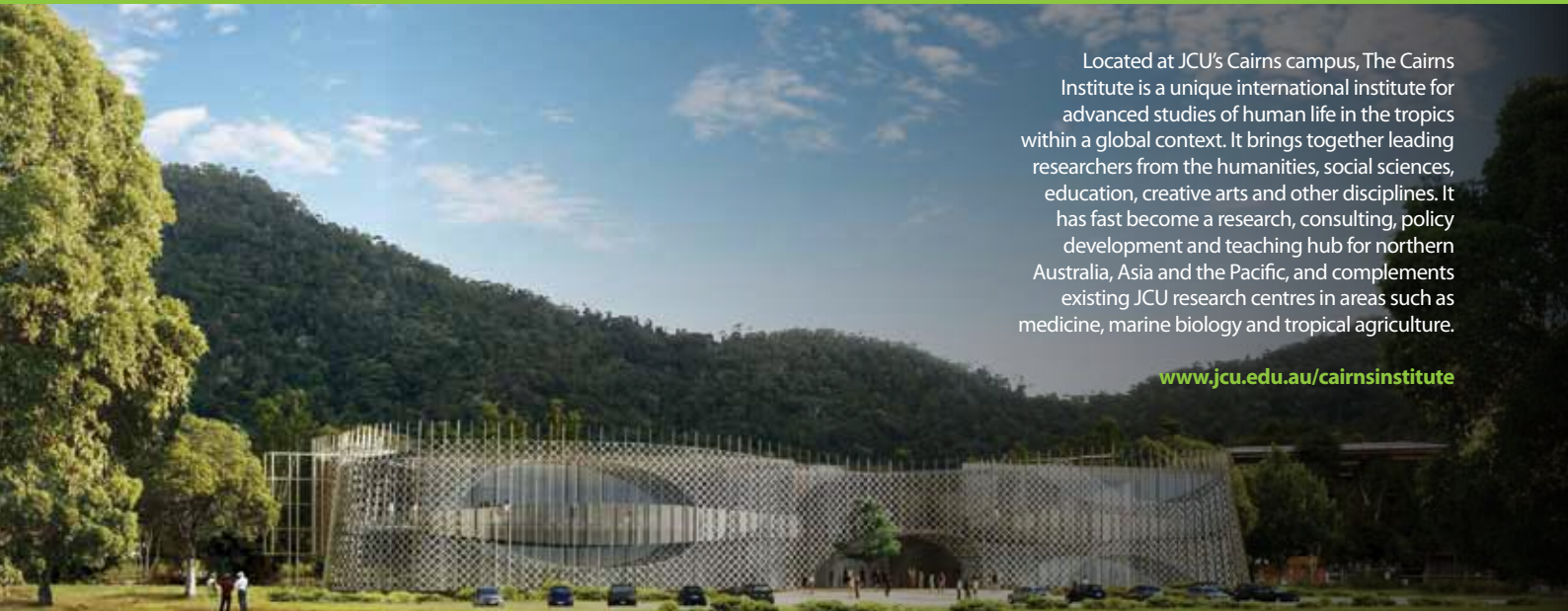
## ARC Centre of Excellence for Coral Reef Studies



The ARC Centre of Excellence for Coral Reef Studies is the world's pre-eminent coral reef research group and undertakes research for the sustainable use and management of coral reefs. This prestigious research centre is headquartered at James Cook University, Townsville. The Centre is a partnership of James Cook University (JCU), the Australian Institute of Marine Science (AIMS), The Australian National University (ANU), the Great Barrier Reef Marine Park Authority (GBRMPA), The University of Queensland (UQ) and the University of Western Australia (UWA). The Centre of Excellence is a collaboration of approximately 250 scientists of whom nearly 200 are postgraduate students. This underpins Australia's leading contribution to coral reef sciences, and fosters stronger collaborative links between the major Australian partners and a network of leading institutions around the world.

[www.coralcoe.org.au](http://www.coralcoe.org.au)

## The Cairns Institute



Located at JCU's Cairns campus, The Cairns Institute is a unique international institute for advanced studies of human life in the tropics within a global context. It brings together leading researchers from the humanities, social sciences, education, creative arts and other disciplines. It has fast become a research, consulting, policy development and teaching hub for northern Australia, Asia and the Pacific, and complements existing JCU research centres in areas such as medicine, marine biology and tropical agriculture.

[www.jcu.edu.au/cairnsinstitute](http://www.jcu.edu.au/cairnsinstitute)

*Artist impression*

# What Can I Study?

## Courses and Fees

Course	2013 Tuition Fee (per year)	Duration	Campus	Mid-Year Intake	English Band Level	Minimum Prerequisites
--------	-----------------------------	----------	--------	-----------------	--------------------	-----------------------

### POSTGRADUATE COURSEWORK DEGREES

DOCTORATES BY COURSEWORK						
<b>Doctor of Psychology</b> <a href="#">[see p.26]</a> (Clinical, Geropsychology)	\$24,000	3	T	Yes	4	Completion of a first or second class honours degree from a course accredited by the Australian Psychological Society, 2 Academic Referee Reports, Personal Statement of Interest, Resume/Curriculum Vitae
<b>Doctor of Clinical Dentistry</b> <a href="#">[see p.40]</a>	\$40,000	3	C	Yes	4	Bachelor of Dental Surgery or equivalent registrable dental qualification awarded by a recognised institution, minimum 2 years of General Dental Practice experience, current registration with the Dental Board of Australia or other national dental registration authority
MASTERS BY COURSEWORK						
<b>Master of Arts</b> (General, Journalism <sup>^^</sup> , Writing <sup>^^</sup> ) <a href="#">[see p.26]</a>	\$20,000	1.5	T <sup>^^</sup>	Yes	1#	Completion of a recognised, appropriate undergraduate degree or equivalent prior learning including appropriate professional experience
<b>Master of Biomedical Sciences</b> <a href="#">[see p.40]</a>	\$23,000	1.5	T	No	2	Completion of a recognised undergraduate degree in Biomedical Sciences or related science discipline or equivalent prior learning including appropriate professional experience
<b>Master of Business Administration</b> <a href="#">[see p.32]</a> (Dispute Resolution, General, International Tourism, Managerial Accounting)	\$22,000	1.5	T,C**	Yes	1	Completion of a recognised, appropriate undergraduate degree or equivalent prior learning including appropriate professional experience. No work experience required
<b>Master of Business Administration (fast track)</b> <a href="#">[see p.32]</a>	\$33,000	1	T,C	Yes	1	Completion of a recognised, appropriate undergraduate degree or equivalent prior learning including appropriate professional experience. No work experience required
<b>Master of Business Administration / Master of Conflict and Dispute Resolution</b> <a href="#">[see p.32]</a>	\$22,000	2	T	Yes	1	Completion of a recognised, appropriate undergraduate degree and professional experience (minimum 5 years academic and professional experience in a cognate discipline) or equivalent prior learning including appropriate professional experience
<b>Master of Conflict and Dispute Resolution</b> <a href="#">[see p.32]</a>	\$22,000	1	T	Yes	1	Completion of a recognised, appropriate undergraduate degree and professional experience (minimum 5 years academic and professional experience in a cognate discipline) or equivalent prior learning including appropriate professional experience
<b>Master of Development Practice</b> <a href="#">[see p.46]</a>	\$30,000	2	C	Yes	1	Completion of a recognised undergraduate degree. Preference will be given to those who can demonstrate experience in, and commitment to, international development practice
<b>Master of Economics</b> <a href="#">[see p.32]</a> (General, Environmental Management, Political Economy)	\$22,000	2	T	Yes	1	Completion of a recognised undergraduate degree, with Honours I or II or equivalent prior learning including appropriate professional experience
<b>Master of Information Technology</b> <a href="#">[see p.33]</a> (Business Informatics, Computing and Networking, Interactive Technologies and Game Design)	\$22,000	1.5	T,C	Yes	1	Completion of a recognised, appropriate undergraduate degree in information technology or related discipline or equivalent prior learning including appropriate professional experience
<b>Master of Information Technology (Extended)</b> <a href="#">[see p.33]</a>	\$22,000	2	T,C	Yes	1	Completion of a recognised, appropriate undergraduate degree not in information technology or related discipline or equivalent prior learning including appropriate professional experience
<b>Master of Information Technology / Master of Business Administration</b> <a href="#">[see p.34]</a>	\$22,000	2	T,C	Yes	1	Completion of a recognised, appropriate undergraduate degree in information technology or related discipline or equivalent prior learning including appropriate professional experience
<b>Master of Information Technology (Extended) / Master of Business Administration</b> <a href="#">[see p.34]</a>	\$22,000	2.5	T,C	Yes	1	Completion of a recognised, appropriate undergraduate degree in information technology or related discipline or equivalent prior learning including appropriate professional experience

Course	2013 Tuition Fee (per year)	Duration	Campus	Mid-Year Intake	English Band Level	Minimum Prerequisites
<b>Master of Professional Accounting</b> [see p.34]	\$22,000	1.5	T,C	No	1	Completion of a recognised, appropriate undergraduate degree in a non-accounting discipline or equivalent prior learning including appropriate professional experience
<b>Master of Professional Accounting / Master of Business Administration</b> [see p.34]	\$22,000	2	T,C	Yes	1	Completion of a recognised, appropriate undergraduate degree in a non-accounting discipline or equivalent prior learning including appropriate professional experience
<b>Master of Psychology</b> [see p.26]	\$24,000	2	T	No	4	Completion of a first or second class honours degree from a course accredited by the Australian Psychological Society, 2 Academic Referee Reports, Personal Statement of Interest, Resume/Curriculum Vitae. Application deadline last Friday in October
<b>Master of Public Health</b> [see p.40] (Aeromedical Retrieval, Biosecurity and Disaster Preparedness, Communicable Disease Control, General, Health Promotion)	\$23,000	1.5	T	Yes	3a	Completion of a recognised undergraduate degree in a health science and 5 years professional work experience, 2 Academic Referee Reports, Personal Statement of Interest, Resume/Curriculum Vitae
<b>Master of Public Health / Master of Business Administration</b> [see p.40]	\$23,000	2	T	Yes	3a	Completion of a recognised undergraduate degree in a health science and 5 years professional work experience, 2 Academic Referee Reports, Personal Statement of Interest, Resume/Curriculum Vitae
<b>Master of Public Health and Tropical Medicine</b> [see p.40]	\$23,000	1.5	T	Yes	3a	Completion of a recognised undergraduate degree in a health science and 5 years professional work experience, 2 Academic Referee Reports, Personal Statement of Interest, Resume/Curriculum Vitae
<b>Master of Rural and Remote Medicine</b> [see p.40]	\$23,000	1.5	T	No	3a	Applicants must be registered medical practitioners (or eligible to register) in an Australian state, be experienced rural medical practitioners, or have completed, or be enrolled in, a training program in rural medicine as certified by the Australian College of Rural and Remote Medicine (or by the Royal Australian College of General Practitioners)
<b>Master of Science</b> [see p.40 and p.46] (Aquaculture, Biochemistry, Environmental Earth Sciences, Environmental Marine Science, Geology, Immunology, Marine Biology, Microbiology, Natural Resource Management, Protected Area Management, Pharmacology, Physiology, Tropical Agriculture, Tropical Ecology and Conservation, Tropical Marine Ecology and Fisheries Biology)	\$26,000	1.5	T,C**	Yes	1	Completion of a recognised, appropriate undergraduate degree attaining a minimum of 65% or equivalent prior learning including appropriate professional experience
<b>Master of Social Science</b> [see p.26] (Asia-Pacific Governance and Development, Criminology, Environment and Heritage, Human Services <sup>^^</sup> , Indigenous Studies, Women's Studies <sup>^^</sup> )	\$20,000	1.5	T,C	Yes	1	Completion of a recognised undergraduate degree or completion of a postgraduate certificate or postgraduate diploma in a relevant area and a minimum of at least 5 years academic and professional experience in a cognate discipline
<b>Master of Social Work (Professional Qualifying)</b> [see p.26]	\$20,000	2	T,C	No	3a	Completion of a recognised, appropriate undergraduate degree or equivalent prior learning including appropriate professional experience
<b>Master of Tropical Animal Science</b> [see p.41]	\$24,000	1.5	T	No	2	Completion of an appropriate undergraduate degree with Class I or Class II Honours in a suitable discipline and at least two years postgraduate professional work experience
<b>Master of Tropical Urban and Regional Planning</b> [see p.47]	\$26,000	1.5	T	Yes	1	Completion of a recognised, appropriate undergraduate degree or equivalent prior learning including appropriate professional experience
<b>Master of Tropical Veterinary Science</b> [see p.41]	\$24,000	1.5	T	No	2	Completion of a Bachelor of Veterinary Science or equivalent prior learning including appropriate professional experience

Course	2013 Tuition Fee (per year)	Duration	Campus	Mid-Year Intake	English Band Level	Minimum Prerequisites
<b>GRADUATE DIPLOMAS</b>						
<b>Graduate Diploma of Accounting</b> [see p.34]	\$22,000	1	T,C	No	1	Completion of a recognised, appropriate undergraduate degree or equivalent prior learning including appropriate professional experience
<b>Graduate Diploma of Arts</b> [see p.26]	\$20,000	1	T,C	Yes	1	Completion of a recognised, appropriate undergraduate degree or equivalent prior learning including appropriate professional experience
<b>Graduate Diploma of Biomedical Sciences</b> [see p.40]	\$23,000	1	T	No	2	Completion of a recognised undergraduate degree in Biomedical Sciences or related science discipline or equivalent prior learning including appropriate professional experience
<b>Graduate Diploma of Biotechnology</b> [see p.47]	\$26,000	1	T	Yes	1	Completion of a recognised undergraduate degree in Biomedical Sciences or related science discipline or equivalent prior learning including appropriate professional experience
<b>Graduate Diploma of Business Administration</b> [see p.32]	\$22,000	1	T,C	Yes	1	Completion of a recognised, appropriate undergraduate degree or equivalent prior learning including appropriate professional experience
<b>Graduate Diploma of Creative Arts</b> [see p.34]	\$22,000	1	T,C	Yes	1	Completion of a recognised, appropriate undergraduate degree or equivalent prior learning including appropriate professional experience
<b>Graduate Diploma of Development Practice</b> [see p.46]	\$27,000	1	C	No	1	Completion of a recognised undergraduate degree. Preference will be given to those who can demonstrate experience in, and commitment to, international development practice
<b>Graduate Diploma of Education</b> [see p.27] (Primary, Secondary, Years 1-9)	\$19,000	1	T,C**	No	4	Completion of a recognised undergraduate degree in a field other than Education, 2 Academic Referee Reports, Personal Statement of Interest, Curriculum Vitae. Application deadline last Friday in October each year. Additionally, previous degree must include a sufficient amount of study in their intended teaching areas
<b>Graduate Diploma of Information Technology</b> [see p.33]	\$22,000	1	T,C	Yes	1	Completion of a recognised undergraduate degree in Information Technology or related discipline or equivalent prior learning including appropriate professional work experience
<b>Graduate Diploma of Legal Studies</b> [see p.34]	\$22,000	1	T,C	Yes	2	Completion of a recognised, appropriate undergraduate degree or equivalent prior learning including appropriate professional experience
<b>Graduate Diploma of Science</b> [see p.41 and 46]	\$26,000	1	T,C**	Yes	1	Completion of a recognised, appropriate undergraduate degree or equivalent prior learning including appropriate professional experience
<b>Graduate Diploma of Social Science</b> [see p.26]	\$20,000	1	T,C	Yes	1	Completion of a recognised, appropriate undergraduate degree or equivalent prior learning including appropriate professional experience
<b>Graduate Diploma of Tropical Animal Science</b> [see p.41]	\$24,000	1	T	No	2	Completion of a recognised, appropriate undergraduate degree or equivalent prior learning including appropriate professional experience
<b>POSTGRADUATE DIPLOMAS</b>						
<b>Postgraduate Diploma of Clinical Psychology</b> [see p.27]	\$24,000	1	T	Yes	4	Completion of a first or second class honours degree accredited by the Australian Psychological Society, 2 Academic Referee Reports, Personal Statement of Interest, Resume/Curriculum Vitae
<b>Postgraduate Diploma of Economics</b> [see p.33]	\$22,000	1	T	Yes	1	Completion of a recognised, appropriate undergraduate degree or equivalent prior learning including appropriate professional experience
<b>Postgraduate Diploma of Geropsychology</b> [see p.27]	\$24,000	1	T	Yes	4	Completion of a first or second class honours degree accredited by the Australian Psychological Society, 2 Academic Referee Reports, Personal Statement of Interest, Resume/Curriculum Vitae
<b>Postgraduate Diploma of Psychology</b> [see p.26]	\$24,000	1	T,C	Yes	4	Completion of an undergraduate degree that includes an Australian Psychological Society approved three-year sequence in Psychology and a minimum of a credit average in all level 3 Psychology subjects taken as part of that degree, 2 Academic Referee Reports, Personal Statement of Interest, Resume/Curriculum Vitae
<b>Postgraduate Diploma of Public Health and Tropical Medicine</b> [see p.41]	\$23,000	1	T	Yes	3a	Completion of a recognised, appropriate undergraduate degree in a relevant discipline or equivalent prior learning including appropriate professional experience, 2 Academic Referee Reports, Personal Statement of Interest, Resume/Curriculum Vitae

Course	2013 Tuition Fee (per year)	Duration	Campus	Mid-Year Intake	English Band Level	Minimum Prerequisites
<b>Postgraduate Diploma of Rural and Remote Medicine</b> [see p.40]	\$23,000	1	T	Yes	3a	Applicants must be registered medical practitioners (or eligible to register) in an Australian state, be experienced rural medical practitioners, or have completed, or be enrolled in, a training program in rural medicine as certified by the Australian College of Rural and Remote Medicine (or by the Royal Australian College of General Practitioners)
<b>Postgraduate Diploma of Tropical Medicine and Hygiene</b> [see p.41]	\$23,000	1	T	Yes	3a	Completion of a recognised medical degree
<b>Postgraduate Diploma of Tropical Veterinary Science</b> [see p.41]	\$24,000	1	T	No	2	Completion of a Bachelor of Veterinary Science or equivalent prior learning including appropriate professional experience
<b>GRADUATE CERTIFICATES</b>						
<b>Graduate Certificate of Accounting</b> [see p.34]	\$11,000	0.5	T,C	No	1	Completion of a recognised, appropriate undergraduate degree or equivalent prior learning including appropriate professional experience
<b>Graduate Certificate of Arts</b> [see p.26]	\$10,000	0.5	T,C	Yes	1	Completion of a recognised, appropriate undergraduate degree or equivalent prior learning including appropriate professional experience
<b>Graduate Certificate of Biomedical Sciences</b> [see p.40]	\$11,500	0.5	T	No	2	Completion of a recognised undergraduate degree in Biomedical Sciences or related science discipline or equivalent prior learning including appropriate professional experience
<b>Graduate Certificate of Biotechnology</b> [see p.47]	\$13,000	0.5	T	Yes	1	Completion of a recognised undergraduate degree in Biomedical Sciences or related science discipline or Equivalent prior learning including appropriate professional experience
<b>Graduate Certificate of Business Administration</b> [see p.32]	\$11,000	0.5	T,C	Yes	1	Completion of a recognised, appropriate undergraduate degree or equivalent prior learning including appropriate professional experience
<b>Graduate Certificate of Conflict and Dispute Resolution</b> [see p.32]	\$11,000	0.5	T	Yes	1	Completion of a recognised, appropriate undergraduate degree or equivalent prior learning including appropriate professional experience
<b>Graduate Certificate of Development Practice</b> [see p.46]	\$13,500	0.5	C	No	1	Completion of a recognised undergraduate degree. Preference will be given to those who can demonstrate experience in, and commitment to, international development practice
<b>Graduate Certificate of Information Technology</b> [see p.33]	\$11,000	0.5	T,C	Yes	1	Completion of a recognised, appropriate undergraduate degree or equivalent prior learning including appropriate professional experience
<b>Graduate Certificate of Legal Studies</b> [see p.34]	\$11,000	0.5	T,C	Yes	2	Completion of a recognised, appropriate undergraduate degree or equivalent prior learning including appropriate professional experience
<b>Graduate Certificate of Science</b> [see p.41 and 46]	\$13,000	0.5	T,C**	Yes	1	Completion of a recognised, appropriate undergraduate degree or equivalent prior learning including appropriate professional experience
<b>Graduate Certificate of Tropical Animal Science</b> [see p.41]	\$12,000	0.5	T	No	2	Completion of a recognised, appropriate undergraduate degree
<b>POSTGRADUATE CERTIFICATES</b>						
<b>Postgraduate Certificate of Clinical Psychology</b> [see p.27]	\$12,000	0.5	T	No	4	Completion of a first or second class honours degree accredited by the Australian Psychological Society, 2 Academic Referees Reports, Personal Statement of Interest, Curriculum Vitae
<b>Postgraduate Certificate of Disaster and Refugee Health</b> [see p.41]	\$11,500	0.5	T	Yes	3a	Completion of a recognised Medical or Nursing degree or other recognised professional qualification or equivalent prior learning including appropriate professional experience
<b>POSTGRADUATE QUALIFYING PROGRAM</b>						
<b>Postgraduate Qualifying Program (PQP) – Business</b> [see p.34]	\$10,500	0.5	T,C	Yes	1	Study towards a recognised, appropriate undergraduate degree or equivalent prior learning including appropriate professional experience
<b>RESEARCH METHODS</b>						
<b>Postgraduate Diploma of Research Methods (Faculty of Arts, Education and Social Science disciplines)</b> [see p.28]	\$20,000	1	T,C**	Yes	1#	Completion of a recognised, appropriate undergraduate degree, Research Proposal, Resume/Curriculum Vitae

Course	2013 Tuition Fee (per year)	Duration	Campus	Mid-Year Intake	English Band Level	Minimum Prerequisites
<b>Postgraduate Diploma of Research Methods (Faculty of Science and Engineering disciplines)</b> [see p.48]	\$26,000	1	T,C**	Yes	1	Completion of a recognised, appropriate undergraduate degree, Research Proposal, Resume/Curriculum Vitae
<b>Postgraduate Diploma of Research Methods (Faculty of Medicine, Health and Molecular Science disciplines)</b> [see p.42]	\$23,000	1	T,C**	Yes	2	Completion of a recognised, appropriate undergraduate degree, Research Proposal, Resume/Curriculum Vitae
<b>Postgraduate Diploma of Research Methods (Faculty of Law, Business and the Creative Arts disciplines)</b> [see p.35]	\$22,000	1	T,C**	Yes	1#	Completion of a recognised, appropriate undergraduate degree, Research Proposal, Resume/Curriculum Vitae
<b>Graduate Certificate of Research Methods (Faculty of Arts, Education and Social Science disciplines)</b> [see p.28]	\$10,000	0.5	T,C**	Yes	1#	Completion of a recognised, appropriate undergraduate degree, Research Proposal, Resume/Curriculum Vitae
<b>Graduate Certificate of Research Methods (Faculty of Science and Engineering disciplines)</b> [see p.48]	\$13,000	0.5	T,C**	Yes	1	Completion of a recognised, appropriate undergraduate degree, Research Proposal, Resume/Curriculum Vitae
<b>Graduate Certificate of Research Methods (Faculty of Medicine, Health and Molecular Science disciplines)</b> [see p.42]	\$11,500	0.5	T,C**	Yes	2	Completion of a recognised, appropriate undergraduate degree, Research Proposal, Resume/Curriculum Vitae
<b>Graduate Certificate of Research Methods (Faculty of Law, Business and the Creative Arts disciplines)</b> [see p.35]	\$11,000	0.5	T,C**	Yes	1#	Completion of a recognised, appropriate undergraduate degree, Research Proposal, Resume/Curriculum Vitae

## POSTGRADUATE RESEARCH DEGREES

DOCTORATES						
<b>Doctor of Education</b> [see p.28]	\$22,000	3	T,C	Yes	2	Completion of a recognised, appropriate degree with research component, 2 Academic Referee Reports, Personal Statement of Interest, Research Proposal, Resume/Curriculum Vitae
<b>Doctor of Nursing Science</b> [see p.42]	\$24,000	3	T,C	Yes	2	Completion of a recognised, appropriate degree with research component, 2 Academic Referee Reports, Personal Statement of Interest, Research Proposal, Resume/Curriculum Vitae
<b>Doctor of Philosophy (Aquaculture, Marine Biology)</b> [see p.48 and p.50]	\$32,000	3	T,C	Yes	2	Completion of a recognised, appropriate degree with research component, 2 Academic Referee Reports, Personal Statement of Interest, Research Proposal, Resume/Curriculum Vitae
<b>Doctor of Philosophy</b> [see p.28] (Anthropology, Archaeology, Criminology, Cultural Heritage Studies, Education, English Literature, History, Indigenous Studies, Journalism, Languages, Politics and International Relations, Psychology, Social Policy, Social Science, Social Work, Sociology, Welfare Studies, Women's Studies)	\$22,000	3	T,C**	Yes	2	Completion of a recognised, appropriate degree with research component, 2 Academic Referee Reports, Personal Statement of Interest, Research Proposal, Resume/Curriculum Vitae
<b>Doctor of Philosophy</b> [see p.48] (Botany and Tropical Plant Sciences, Chemistry, Earth Sciences, Ecology and Tropical Ecology, Engineering, Entomology, Environmental Science, Geography, Geographic and Land Information Systems, Mathematics and Statistics, Physics, Tropical Agricultural Science, Tropical Urban and Regional Planning, Wildlife Biology and Management, Zoology)	\$28,500	3	T,C**	Yes	2	Completion of a recognised, appropriate degree with research component, 2 Academic Referee Reports, Personal Statement of Interest, Research Proposal, Resume/Curriculum Vitae
<b>Doctor of Philosophy (Nursing Science)</b> [see p.42]	\$24,000	3	T	Yes	2	Completion of a recognised, appropriate degree with research component, 2 Academic Referee Reports, Personal Statement of Interest, Research Proposal, Resume/Curriculum Vitae
<b>Doctor of Philosophy</b> [see p.42] (Anatomy, Biomedical Sciences, Biochemistry and Molecular Biology, Chemistry, Immunology and Microbiology, Medicine, Medical Entomology, Nursing Science, Occupational Therapy, Parasitology, Pharmacology and Physiology, Pharmacy, Public Health, Sport and Exercise Science, Speech Pathology, Tropical Animal Science, Tropical Medical Science, Tropical Veterinary Science)	\$25,000	3	T,C**	Yes	2	Completion of a recognised, appropriate degree with research component, 2 Academic Referee Reports, Personal Statement of Interest, Research Proposal, Resume/Curriculum Vitae

Course	2013 Tuition Fee (per year)	Duration	Campus	Mid-Year Intake	English Band Level	Minimum Prerequisites
<b>Doctor of Philosophy</b> [see p.35] (Accounting and Finance, Business, Computer Science, Creative Arts, Economics, Information Technology, Law, Management, Marketing, Music, Tourism)	\$24,000	3	T,C**	Yes	2	Completion of a recognised, appropriate degree with research component, 2 Academic Referee Reports, Personal Statement of Interest, Research Proposal, Resume/ Curriculum Vitae
<b>MASTERS BY RESEARCH</b>						
<b>Master of Biomedical Sciences</b> [see p.40]	\$25,000	2	T	Yes	2	Completion of a recognised, appropriate degree with research component, 2 Academic Referee Reports, Personal Statement of Interest, Research Proposal, Resume/ Curriculum Vitae
<b>Master of Laws</b> [see p.35]	\$24,000	2	T,C	Yes	2	Completion of a recognised, appropriate degree with research component, 2 Academic Referee Reports, Personal Statement of Interest, Research Proposal, Resume/ Curriculum Vitae
<b>Master of Medicine</b> [see p.42]	\$25,000	2	T	Yes	2	Completion of a recognised, appropriate degree with research component, 2 Academic Referee Reports, Personal Statement of Interest, Research Proposal, Resume/ Curriculum Vitae
<b>Master of Nursing Science</b> [see p.42]	\$25,000	2	T,C	Yes	2	Completion of a recognised, appropriate degree with research component, 2 Academic Referee Reports, Personal Statement of Interest, Research Proposal, Resume/ Curriculum Vitae
<b>Master of Occupational Therapy</b> [see p.42]	\$25,000	2	T	Yes	2	Completion of a recognised, appropriate degree with research component, 2 Academic Referee Reports, Personal Statement of Interest, Research Proposal, Resume/ Curriculum Vitae
<b>Master of Pharmacy</b> [see p.42]	\$25,000	2	T	Yes	2	Completion of a recognised, appropriate degree with research component, 2 Academic Referee Reports, Personal Statement of Interest, Research Proposal, Resume/ Curriculum Vitae
<b>Master of Philosophy</b> [see p.28] (Anthropology, Archaeology, Criminology, Cultural Heritage Studies, Education, English Literature, History, Indigenous Studies, Journalism, Languages, Politics and International Relations, Psychology, Social Policy, Social Science, Social Work, Sociology, Welfare Studies, Women's Studies)	\$22,000	2	T,C**	Yes	2	Completion of a recognised, appropriate degree with research component, 2 Academic Referee Reports, Personal Statement of Interest, Research Proposal, Resume/ Curriculum Vitae
<b>Master of Philosophy</b> [see p.35] (Accounting and Finance, Business, Commerce, Computer Science, Creative Arts, Economics, Information Technology, Management, Marketing, Music, Tourism)	\$24,000	2	T,C**	Yes	2	Completion of a recognised, appropriate degree with research component, 2 Academic Referee Reports, Personal Statement of Interest, Research Proposal, Resume/ Curriculum Vitae
<b>Master of Philosophy (Science)</b> [see p.48] (Botany and Tropical Plant Sciences, Chemistry, Earth Sciences, Ecology and Tropical Ecology, Engineering, Entomology, Environmental Science, Geography, Geographic and Land Information Systems, Mathematics and Statistics, Physics, Tropical Agricultural Science, Tropical Urban and Regional Planning, Wildlife Biology and Management, Zoology)	\$28,500	2	T,C**	Yes	2	Completion of a recognised, appropriate degree with research component, 2 Academic Referee Reports, Personal Statement of Interest, Research Proposal, Resume/ Curriculum Vitae
<b>Master of Philosophy (Science)</b> [see p.48 and p.50] (Aquaculture, Marine Biology)	\$32,000	2	T,C**	Yes	2	Completion of a recognised, appropriate degree with research component, 2 Academic Referee Reports, Personal Statement of Interest, Research Proposal, Resume/ Curriculum Vitae
<b>Master of Science</b> [see p.42] (Anatomy, Biomedical Sciences, Biochemistry and Molecular Biology, Chemistry, Immunology and Microbiology, Medicine, Medical Entomology, Nursing Science, Occupational Therapy, Parasitology, Pharmacology and Physiology, Pharmacy, Public Health, Sport and Exercise Science, Speech Pathology, Tropical Animal Science, Tropical Medical Science, Tropical Veterinary Science)	\$28,500	2	T,C**	Yes	2	Completion of a recognised, appropriate degree with research component, 2 Academic Referee Reports, Personal Statement of Interest, Research Proposal, Resume/ Curriculum Vitae
<b>Master of Speech Pathology</b> [see p.43]	\$25,000	2	T	Yes	2	Completion of a recognised, appropriate degree with research component, 2 Academic Referee Reports, Personal Statement of Interest, Research Proposal, Resume/ Curriculum Vitae

Course	2013 Tuition Fee (per year)	Duration	Campus	Mid-Year Intake	English Band Level	Minimum Prerequisites
<b>Master of Sport and Exercise Science</b> [see p.43]	\$25,000	2	T,C	Yes	2	Completion of a recognised, appropriate degree with research component, 2 Academic Referee Reports, Personal Statement of Interest, Research Proposal, Resume/ Curriculum Vitae
<b>Master of Tropical Animal Science</b> [see p.43]	\$25,000	2	T	Yes	2	Completion of a recognised, appropriate degree with research component, 2 Academic Referee Reports, Personal Statement of Interest, Research Proposal, Resume/ Curriculum Vitae
<b>Master of Tropical Veterinary Science</b> [see p.43]	\$25,000	2	T	Yes	2	Completion of a recognised, appropriate degree with research component, 2 Academic Referee Reports, Personal Statement of Interest, Research Proposal, Resume/ Curriculum Vitae

## DEGREES TAUGHT BY DISTANCE / FLEXIBLE DELIVERY

<b>Doctor of Astronomy</b> [see p.52]	\$28,500	3	Distance	Yes	1	Completion of a recognised undergraduate degree in a physical science or related discipline or equivalent prior learning including appropriate professional experience
<b>Doctor of Philosophy (Astronomy)</b> [see p.52]	\$28,500	3	Distance	Yes	1	Completion of a recognised, appropriate degree with research component, 2 Academic Referee Reports, Personal Statement of Interest, Research Proposal
<b>Graduate Diploma of Astronomy</b> [see p.52]	\$15,000	1	Distance	Yes	1	Completion of a recognised undergraduate degree in a physical science or related discipline or equivalent prior learning including appropriate professional experience
<b>Graduate Diploma of Conflict and Dispute Resolution</b> [see p.52]	\$22,000	1	Distance	Yes	1	Completion of a recognised, appropriate undergraduate degree and professional experience (minimum 5 years academic and professional experience in a cognate discipline)
<b>Graduate Certificate of Astronomy</b> [see p.52]	\$7,500	0.5	Distance	Yes	1	Completion of a recognised undergraduate degree in a physical science or related discipline or equivalent prior learning including appropriate professional experience
<b>Graduate Certificate of Career Development</b> [see p.52]	\$10,000	0.5	Distance	Yes	1	Completion of a recognised undergraduate degree or equivalent prior learning including appropriate professional experience
<b>Master of Astronomy</b> [see p.52]	\$15,000	1.5	Distance	Yes	1	Completion of an undergraduate degree in physical science or related discipline or equivalent prior learning including appropriate professional experience
<b>Master of Conflict and Dispute Resolution</b> [see p.52]	\$22,000	1	Distance	Yes	1	Completion of a recognised, appropriate undergraduate degree and professional experience (minimum 5 years academic and professional experience in a cognate discipline) or equivalent prior learning including appropriate professional experience
<b>Master of Education (General Education, Sustainability)</b> [see p.52]	\$20,000	1	Distance	Yes	2	Completion of a recognised, appropriate undergraduate degree and a minimum of at least four years academic and/ or professional experience in a cognate discipline. Note: This course does not lead to teacher registration
<b>Master of Guidance and Counselling</b> [see p.52]	\$20,000	1.5	Distance	Yes	4	Completion of a recognised undergraduate degree or equivalent prior learning including appropriate professional experience
<b>Master of Occupational Therapy (Coursework)</b> [see p.52]	\$24,000	1.5	Distance	Yes	2	"Completion of a recognised, appropriate undergraduate degree by World Federation of Occupational Therapists, from this or another university
<b>Master of Pharmaceutical Public Health</b> [see p.52]	\$23,000	1.5	Distance	Yes	3a	Completion of a recognised, appropriate undergraduate degree or equivalent prior learning including appropriate professional experience
<b>Master of Public Health and Tropical Medicine</b> [see p.53]	\$23,000	1.5	Distance	Yes	3A	Completion of a recognised, appropriate undergraduate degree in health science and 5 years professional work experience, 2 Academic Referee Reports, Personal Statement of Interest, Resume/Curriculum Vitae
<b>Master of Rehabilitation (Physiotherapy)</b> [see p.53]	\$23,000	1.5	Distance	Yes	2	Applicants must be registered Australian Physiotherapists or have completed an overseas recognised physiotherapy qualification. Note: Completion of this program will not enable Australian registration of overseas qualified physiotherapists



Course	2013 Tuition Fee (per year)	Duration	Campus	Mid-Year Intake	English Band Level	Minimum Prerequisites
<b>Postgraduate Certificate of Aeromedical Retrieval</b> [see p.53]	\$11,500	0.5	Distance	Yes	2	Completion of a recognised Medical or Nursing degree or other recognised professional qualification or equivalent prior learning including appropriate professional experience
<b>Postgraduate Certificate of Education</b> [see p.52]	\$10,000	0.5	Distance	Yes	2	Completion of a recognised, appropriate undergraduate degree or equivalent prior learning including appropriate professional experience
<b>Postgraduate Certificate of Health Promotion</b> [see p.53]	\$11,500	0.5	Distance	Yes	3a	Completion of a medical, nursing or allied health degree or recognised professional qualification, or completion of an undergraduate degree in a relevant discipline
<b>Postgraduate Certificate of Infection Control</b> [see p.53]	\$11,500	0.5	Distance	Yes	3a	Completion of a recognised Medical or Nursing degree or other recognised professional qualification or equivalent prior learning including appropriate professional experience
<b>Postgraduate Certificate of Mental Health Practice</b> [see p.53]	\$10,000	0.5	Distance	Yes	4	Completion of a recognised undergraduate degree in one of the following areas: Social Work, Community Welfare, Psychology, other Human Services degree
<b>Postgraduate Certificate of Nursing Science</b> [see p.53] (Advanced Clinical Practice)	\$11,000	0.5	Distance	Yes	2	Completion of a nursing degree or equivalent qualification, and eligibility for nurse registration in Australia
<b>Postgraduate Certificate of Public Health</b> [see p.53]	\$11,500	0.5	Distance	Yes	3a	Completion of a medical, nursing or allied health degree or recognised professional qualification, or completion of an undergraduate degree in a relevant discipline
<b>Postgraduate Certificate of Rehabilitation (Physiotherapy)</b> [see p.53]	\$11,500	0.5	Distance	Yes	2	Applicants must be registered Australian Physiotherapists or have completed an overseas recognised physiotherapy qualification. Note: Completion of this program will not enable Australian registration of overseas qualified physiotherapists
<b>Postgraduate Certificate of Soft Tissue Injury</b> [see p.53]	\$12,000	0.5	Distance	Yes	3a	Completion of a recognised health professional qualification
<b>Postgraduate Certificate of Travel Medicine</b> [see p.53]	\$11,500	0.5	Distance	Yes	3a	Completion of a recognised Medical or Nursing degree or other recognised professional qualification or equivalent prior learning including appropriate professional experience
<b>Postgraduate Diploma of Health Promotion</b> [see p.53]	\$23,000	1	Distance	Yes	3a	Completion of a medical, nursing or allied health degree or recognised professional qualification, or completion of an undergraduate degree in a relevant discipline
<b>Postgraduate Diploma of Rehabilitation (Physiotherapy)</b> [see p.53]	\$23,000	1	Distance	Yes	2	Applicants must be registered Australian Physiotherapists or have completed an overseas recognised physiotherapy qualification. Note: Completion of this program will not enable Australian registration of overseas qualified physiotherapists

All fees are in Australian dollars and based on the annual fee.  
In the case of programs shorter than a year such as the Graduate Certificates, the fee quoted is the fee for the total program.

Campus availability: T = Townsville; C = Cairns;  
For Singapore campus offerings see page 8. For Brisbane campus offerings see page 9.

\*\* Not all majors available at all campuses

^^ Some majors only offered by distance education (not eligible if applying for a student visa)

# English language band levels will vary by major/academic specialisation

English language band information can be found on page 54.

**NEED  
MORE  
INFO?**

**Visit the Courses and Degrees website**  
[www.jcu.edu.au/courses](http://www.jcu.edu.au/courses)



**Nicolas Pattillo**

*United States*

**Graduate Diploma of Education**

*I decided to study at JCU because it had the specialist degree I wanted to take and was located in a part of Australia that would allow me to do things that can only be done in this amazing part of the world. I had the opportunity to travel to and live in the Torres Strait Islands for a month whilst on practicum. With this degree I can finally start teaching, and because it has been done here in Australia, I can now teach almost anywhere in the world.*



# Faculty of Arts, Education and Social Sciences



*Bringing together traditional and contemporary study areas, the Faculty of Arts, Education and Social Sciences provides a learning environment where staff and students from diverse cultural, demographic and learning backgrounds are welcomed and supported to excel in scholarship, research and professional development.*

The Faculty offers postgraduate coursework and research programs across the arts and humanities, social sciences, psychology, Indigenous Australian studies and education.

## School of Education

The School of Education has a strong commitment to community engagement and a focus on education for sustainable futures with a track record of producing quality teachers both within Australia and internationally. Postgraduate coursework programs offer dynamic professional development opportunities for teachers, administrators and community workers from a range of backgrounds. Research within the school is focused around the areas of

- Education for social and environmental sustainability
- Indigenous education
- Professional practices in teaching and learning
- Teacher preparation, including harnessing new communication and information technologies.

## School of Indigenous Australian Studies

This School encourages students to further their knowledge and awareness of Indigenous issues. Research in the School is focused around the areas of

- Empowerment, health and wellbeing, community development
- History, culture, language, identity
- Education, employment and training

## School of Arts and Social Sciences

The School offers diverse and contemporary programs across the arts, humanities, psychology and the social sciences. Areas of research expertise within the School include

- Health, well-being and social justice in the tropics
- Coastal societies, environments and heritage
- English literature, journalism and modern languages
- Organisational and evolutionary psychology
- Women and gender
- Human rights and social justice
- Regional, remote and rural contexts in social welfare

## Postgraduate Study Areas

- Anthropology
- Archaeology
- Arts
- Asia Pacific Governance and Development
- Criminology
- Cultural Heritage Studies
- Education
- Environment and Heritage
- English Literature
- French
- History
- Human Services
- Indigenous Australian Studies
- Japanese
- Journalism
- Politics and International Relations
- Psychology
  - Clinical
  - Geropsychology
- Social Science
- Social Work
- Sociology

[www.jcu.edu.au/faess](http://www.jcu.edu.au/faess)

# Postgraduate Coursework Study Options

Below are brief descriptions of the postgraduate coursework study options offered at James Cook University through the Faculty of Arts, Education and Social Sciences. Detailed information and course structure can be found on the Courses and Degrees website [www.jcu.edu.au/courses](http://www.jcu.edu.au/courses).

## DOCTOR OF PSYCHOLOGY

JCU's professional doctorate, the Doctor of Psychology, provides advanced training in several areas of professional psychology including

- Clinical Psychology
- Clinical Geropsychology

Psychology students receive advanced supervised practice, aimed at improving specialist skills that build on early generic professional training. Additionally, students complete a substantive research dissertation.

## MASTER OF ARTS

The newly developed Master of Arts is a flexible course and may consist of coursework alone, or of coursework together with a minor thesis. Study areas may include anthropology, archaeology, criminology, English, history, human Services, Indigenous Australian studies, modern languages, politics and international relations, psychology and sociology. Specific majors are also available in writing and journalism through distance education only.

This is a 1.5 year course and a one-year **Graduate Diploma of Arts** and 0.5 year **Graduate Certificate of Arts** are also available.

### General

Study areas may include: anthropology, archaeology, criminology, English, history, human services, Indigenous Australian Studies, modern languages, politics and international relations, psychology and sociology. After consultation with the course coordinator, students select subjects from one of the study areas listed above, or an approved combination of these or other disciplines.

### Journalism<sup>^</sup>

This major is designed for both journalism and non-journalism graduates who wish to gain practical journalism skills or gain an advanced level of professional skills such as those necessary for investigative journalism.

A selection of subjects for this major include

- Writing for Print
- Feature Writing
- Public Relations Campaigns

### Writing<sup>^</sup>

This major is designed for graduates who wish to improve and diversify their writing skills. Students in this program develop a major piece of writing from a particular genre. Students can also participate in an intensive writing masterclass, offered twice annually.

A selection of subjects for this major include

- Professional Editing
- Black Writers
- Creative Writing
- Reading and Writing the Short Story

<sup>^</sup>Major only offered by distance education

## MASTER OF PSYCHOLOGY

JCU's Master of Psychology by coursework provides advanced academic and practical postgraduate training for professional practice at a level sufficient to meet the criteria for registration as a practicing psychologist. It will also meet the requirement for a fifth or sixth year of academic training for membership of the Australian Psychology Accreditation Council and the requirements of the Psychologists' Board of Queensland for registration as a psychologist. A one-year **Postgraduate Diploma of Psychology** is also available.

A selection of subjects for this major include

- Psychological Assessment in Professional Practice
- Adult Psychopathology
- Neuropsychology in Clinical Practice
- Evaluation and Research
- Methods of Intervention
- Practicum
- Research Thesis

## MASTER OF SOCIAL SCIENCE

This flexible program is designed for graduates from other disciplines who wish to pursue studies within the Faculty of Arts, Education and Social Sciences, either in a single discipline, multiple disciplines or in a selected interdisciplinary area of study. Study areas available include

- Asia Pacific Governance and Development
- Criminology
- Environment and Heritage
- Indigenous Studies

A one-year **Graduate Diploma of Social Science** is also available.

### Asia-Pacific Governance and Development

This course prepares students for careers in international and community development with government, non-government and international organisations such as the UN, the World Bank or charities.

A selection of subjects for this major include

- Qualitative Research in Social Science
- Social Science Coursework Thesis
- Asia Pacific Development: Culture and Globalisation
- Governance, Democratisation and the State
- International Relations and Foreign Policy
- Community Development
- Social Impact Assessment: Environmental Management

### Criminology

This course consists of subjects that are relevant to crime, including a focus on the environment and Indigenous justice issues. Graduates of this program will have skills for working within the criminal justice system including applied research skills and planning and evaluation of crime prevention programs.

A selection of subjects for this major include

- Advanced Professional Studies in Criminology
- Youth and Adult Criminal Justice
- Crime Prevention and Community Safety

- Green Criminology
- Human Rights and Social Exclusion
- History of Terrorism
- Social Policy Analysis

### Environment and Heritage

Graduates will gain skills appropriate to employment in applied research, planning and evaluation, and related positions across local and national governments, international organisations (eg UNESCO) and NGOs associated with natural and cultural heritage/resource management.

A selection of subjects for this major include

- Principles of Archaeological Investigation
- Environmental History
- Introduction to Historical Cultural Heritage
- World Heritage and National Estate Processes
- Social Impact Assessment: Environmental Management
- Indigenous Environmental Management

### Indigenous Studies

Indigenous Australian studies coursework programs at JCU have been established to meet the growing demand for skilled graduates with knowledge and understanding of Aboriginal and Torres Strait Islander perspectives and cultural considerations in relation to research and development; empowerment and change; and education and employment.

A selection of subjects for this major include

- Indigenous Research Ethics
- Field Procedures in Indigenous Research
- Interpreting Research
- Empowerment and Change
- Individual Study Project

## MASTER OF SOCIAL WORK (Professional Qualifying)

This two-year postgraduate program by coursework

offers students with existing undergraduate degrees to undertake study leading to an accredited social work degree. Students will develop knowledge and skills necessary for professional practice in a range of practice fields, and the course has a very strong practical component, with students completing two field education placements. Students do not need to have an undergraduate degree within Social Work to be eligible for entry into the program.

A selection of subjects for this course include

- Foundations for Social Work Practice
- Community Work
- Social Policy Analysis
- Working in Child and Family Welfare
- Social Work and Mental Health
- Social Inquiry Analysis
- Professional Development for Social Work Practice

## GRADUATE DIPLOMA OF EDUCATION

This program is designed for students who have completed an undergraduate degree in a non-teaching discipline, and who

now wish to become a teacher. The Graduate Diploma of Education is a one-year full time degree, which commences in January, prior to the standard University year. Specialisations are available in primary teaching (children aged 6 to 12) and secondary teaching (children aged 12 - 18) at the Townsville campus and Years 1 to 9 (children aged 6 - 15) at the Cairns Campus.

### Primary

This specialisation is available in Townsville and qualifies graduates to teach students from Year 1 to Year 7 (children aged between 6 - 12).

### Years 1 - 9

This specialisation is available exclusively on the Cairns campus and qualifies graduates to teach from Year 1 to Year 9 (children aged from 6 - 14). Graduates of this program are qualified to teach in both primary and lower secondary schools.

### Secondary

This specialisation is available in Townsville and qualifies graduates to teach students in Year 8 to Year 12 (adolescents aged between 13 and 18). Applicants intending to become secondary teachers need to have completed subjects in their undergraduate degree

that correspond to subject areas taught in Queensland schools. Generally students have two teaching areas, a major (eight subjects in their undergraduate degree) and a minor (four subjects in their undergraduate degree). At JCU there are a variety of curriculum areas available for intending Secondary School teachers. These include: Business; Biology; Chemistry; Drama; English; Geography; Health and Physical Education (HPE); History; Technologies; Languages other than English (LOTE); Legal Studies; Marine Studies; Mathematics; Music; Physics; Visual Arts; and Science.

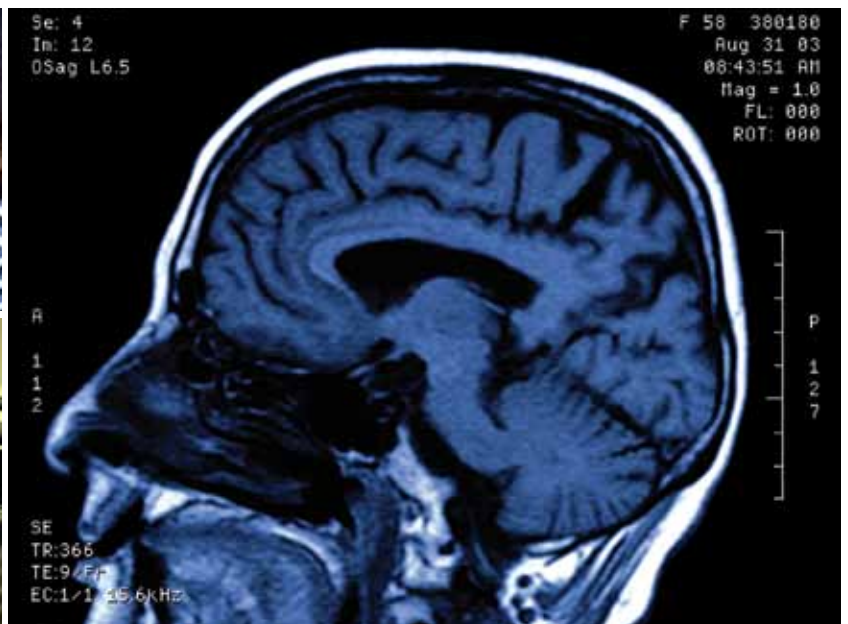
Students in the Graduate Diploma will complete 75 days of professional experience (practical teaching). Graduates are eligible for registration with the Queensland College of Teachers. Students should consult the relevant authority in their home country to establish the requirements for teacher training in that country. All students are required to obtain a Commission of Suitability to Work with Children (Blue Card) prior to beginning professional experience in schools.

## POSTGRADUATE DIPLOMA and POSTGRADUATE CERTIFICATE OF CLINICAL PSYCHOLOGY

These programs are designed for psychologists who have completed an Australian Psychological Society (APS) accredited four year training sequence and are seeking specialised postgraduate training. It provides detailed knowledge of adult psychopathology, health and rehabilitation, psychological assessment in professional practice and working with clients.

## POSTGRADUATE DIPLOMA OF GEROPSYCHOLOGY

This program is designed for psychologists who have completed an Australian Psychological Society (APS) accredited four year sequence and are seeking specialised postgraduate training. Graduates will gain a broad understanding of the multiple aspects of normal and abnormal changes in cognition, personality, well-being and mental health that occur with aging in the later years of life.



**NEED  
MORE  
INFO?**

Visit the Courses and Degrees website  
[www.jcu.edu.au/courses](http://www.jcu.edu.au/courses)

# Postgraduate Research Study Options

The following section gives a brief overview of the higher research degrees available at JCU. Research degrees are listed alphabetically by field of study.

For more detail on areas of research strength, academic profile and more, please visit the individual web sites listed here. A list of potential research topics is also available at [www.jcu.edu.au/grs/topics](http://www.jcu.edu.au/grs/topics). All research enquiries should be emailed to [researchstudenthelp@jcu.edu.au](mailto:researchstudenthelp@jcu.edu.au) and copied to [iscadmissions@jcu.edu.au](mailto:iscadmissions@jcu.edu.au) to ensure contact is made with the appropriate person. Information is given later in this publication on how to apply for research degrees (page 62) and on JCU's academic and English language entry requirements (page 54).

**Please note:** All research degrees fall under the English Band 2 requirement.

## ANTHROPOLOGY

### Master of Philosophy Doctor of Philosophy

Current research interests include: societies and cultures of the tropics, including northern Australia, Asia Pacific, and Latin America; cultural, political and environmental changes, including climate change; science, Indigenous knowledge, and the management of marine resources in the Asia-Pacific region; the science and politics of environmentally sustainable development in the Asia-Pacific; cultural performance and festivals in Australia and the Asia Pacific region; concepts of property, land tenure and native title; ethnopharmacology; shamanism, psychological anthropology; linguistic anthropology; languages and cultures of Australia, Melanesia and lowland Amazonia; local responses to HIV/AIDS in Melanesia; forestry and social impact of logging; Indigenous knowledge and values in the wet tropics.  
[www.jcu.edu.au/sass](http://www.jcu.edu.au/sass)

## ARCHAEOLOGY

### Master of Philosophy Doctor of Philosophy

Current research interests include: North Queensland and the Asia Pacific; archaeology of Australia, Thailand, Laos and Cambodia; issues in cultural heritage, including climate change; resource development, customary land tenure and environmental exploitation; rock art of northern Australia; archaeology of personal ornaments, trade and exchange; development of complex societies; palaeoecological conditions and requirements for successful adaptation to last glacial environments during colder and warmer times.  
[www.jcu.edu.au/sass](http://www.jcu.edu.au/sass)

## CRIMINOLOGY

### Master of Philosophy Doctor of Philosophy

Current research interests include: crime, deviance and juvenile justice; restorative justice and issues in youth deviance, collection and analysis of crime indicators and cultural representations of crime; history of punishment regimes; Indigenous over-representation in the criminal justice system; environmental crime in northern Queensland; and forms and responses to crime in rural and remote areas of Queensland.  
[www.jcu.edu.au/sass](http://www.jcu.edu.au/sass)

## CULTURAL HERITAGE STUDIES

### Master of Philosophy Doctor of Philosophy

Current research interests include: northern Queensland and the Asia Pacific region; Indigenous peoples and the state; cultural, political and environmental change, including climate change; investigations of concepts of heritage, custom, identity, place and cultural landscape; heritage legislation, land rights, and native title in the Asia Pacific region; cultural heritage values in the Great Barrier Reef World Heritage Area and marine park; expressive culture; cultural performances and festivals in Australia and the Asia Pacific region; and research technologies.  
[www.jcu.edu.au/sass](http://www.jcu.edu.au/sass)

## EDUCATION

### Master of Philosophy Doctor of Philosophy Doctor of Education

Core research interests include: information and communication

technologies in education; education of marginalized groups (especially Indigenous people and students with special education needs); professional practices, including curriculum, pedagogy and leadership; educational policy; and the impact of social contexts and factors (such as gender, remoteness and globalization) on educational participation and outcomes. Current research projects include: school mobility and educational risk; gender and literacy; disability and special needs education; education for environmental sustainability; schooling, aspirations and life chances.

The Doctor of Education is a professional doctorate offering advanced study for experienced professionals in education and related fields. It differs from a PhD in that it enables candidates to study several issues and encourages writing for different kinds of audiences (for example work settings, parents, journals and newsletters for academic publishers). The emphasis is on producing a portfolio that includes publishable or published articles and a thesis.  
[www.jcu.edu.au/education](http://www.jcu.edu.au/education)

## ENGLISH LITERATURE

### Master of Philosophy Doctor of Philosophy

Current research interests include: Australian literature; modern fiction; literature about the Pacific region; American literature; British nineteenth-century literature; contemporary literary theory; feminist literary theory; modernist literature and theory; postmodernist writing; fairytale and its uses in contemporary news media and popular culture; and creative writing – fiction and non

fiction; postcolonial literature; short story.  
[www.jcu.edu.au/sass](http://www.jcu.edu.au/sass)

## HISTORY

### Master of Philosophy Doctor of Philosophy

History research interests encompass the history of northern Australia and Oceania and include: the history of European and Indigenous relations in Australia; the cultural and environmental dimensions of change in northern Queensland; and environmental history. Current research projects include: Australian rural and pastoral history; history of mining and metallurgy, Australian historical and cultural heritage; Cape York history; migration and citizenship; and transnationalism.  
[www.jcu.edu.au/sass](http://www.jcu.edu.au/sass)

## INDIGENOUS STUDIES

### Master of Philosophy Doctor of Philosophy

JCU's School of Indigenous Australian Studies (SIAS) has one of the highest enrolments of Indigenous students nationally, but also enables non-Indigenous students to further their knowledge and awareness of Indigenous issues. The School's research projects seek to contribute to the empowerment, well being and self-determination of Aboriginal and Torres Strait Islander communities particularly in the following areas: community capacity in Indigenous communities; Indigenous education; Indigenous oral histories through technology; new media and Indigenous cultural heritage; and health and well-being in Indigenous communities.  
[www.jcu.edu.au/sass](http://www.jcu.edu.au/sass)

## JOURNALISM

### Master of Philosophy Doctor of Philosophy

Current research interests include: investigative journalism, the role of community radio in journalism training; and formal education levels among country press journalists.

[www.jcu.edu.au/sass](http://www.jcu.edu.au/sass)

## LANGUAGES

### Master of Philosophy Doctor of Philosophy

JCU's Department of Humanities offers postgraduate research programs in the modern languages of Japanese and French. Research interest within language teaching and methodology include: theory and practice of second language acquisition; teaching Japanese as a foreign language; and Japanese syntax and semantics in a second language acquisition context.

[www.jcu.edu.au/sass](http://www.jcu.edu.au/sass)

## POLITICS AND INTERNATIONAL RELATIONS

### Master of Philosophy Doctor of Philosophy

Current research interests include: Australian politics and policy; energy and environmental politics; public policy formulation and implementation; business government relations; Japanese politics and foreign policy; comparative Asian politics; international relations of East and South-east Asia and Industrial relations.

[www.jcu.edu.au/sass](http://www.jcu.edu.au/sass)

## PSYCHOLOGY

### Master of Psychology Doctor of Psychology Master of Philosophy

The Department of Psychology offers research opportunities at both the Townsville and Cairns Campuses. Facilities in Townsville include numerous observation suites; electrically shielded psychological recording facilities; a controlled environment research suite; and specialised visual perception, social psychology, behavioural neuroscience, human performance and evolutionary psychological laboratories. There is also an on-site psychology clinic which is open to the public and a 31-bed forensic unit at the Townsville Regional Hospital which is located adjacent to the university campus. JCU's Cairns campus offers superb research facilities including a purpose-built drugs and human performance research facility; cognitive neuroscience and perception laboratories; and a dedicated bioassay facility.

[www.jcu.edu.au/sass](http://www.jcu.edu.au/sass)

## SOCIAL POLICY

### Master of Philosophy Doctor of Philosophy

This program offered by JCU's School of Social Work and Community Welfare gives graduates the opportunity to undertake research in the areas of social policy, social planning and community work. Broad areas of research include: child welfare; social welfare practice and education; qualitative feminist research; and non-profit and third sector organisations.

[www.jcu.edu.au/sass](http://www.jcu.edu.au/sass)

## SOCIAL SCIENCE

### Master of Philosophy Doctor of Philosophy

JCU's location provides students with the opportunity to investigate social issues that are unique to the tropics. An area of research strength has been identified as People, Identity and Place. The Master of Philosophy and PhD may be undertaken in one the following disciplines or fields of study: Anthropology, Archaeology, Criminology, History, Human Services, Politics and International Relations, Psychology, Social Policy and Sociology.

[www.jcu.edu.au/sass](http://www.jcu.edu.au/sass)

## SOCIAL WORK

### Master of Philosophy Doctor of Philosophy

This research degree enables social work practitioners to undertake research in social work theory and/or practice. The principal research areas focus on the welfare of families and children, third sector organisations, and health and mental health. Research is also conducted on issues such as Indigenous and cross-cultural practice, and the globalisation of social work activity.

[www.jcu.edu.au/sass](http://www.jcu.edu.au/sass)

## SOCIOLOGY

### Master of Philosophy Doctor of Philosophy

Current research interests include: youth and popular culture; Indigenous peoples and the state; ethnicity, nationalism and

racism; significance and meaning of Springsteen's music; Australia's Asian communities; work and the new economy; family and gender; men and metrosexuals; visual research methods.

[www.jcu.edu.au/sass](http://www.jcu.edu.au/sass)

## WELFARE STUDIES

### Master of Philosophy Doctor of Philosophy

JCU has an active research team in social welfare, providing high quality supervision for research higher degree students at both Masters and PhD level. Broad areas of research interest within welfare studies include child welfare, social welfare practice and education, qualitative feminist research, and non-profit and third sector organisations.

[www.jcu.edu.au/sass](http://www.jcu.edu.au/sass)

## WOMEN'S STUDIES

### Master of Philosophy Doctor of Philosophy

This degree provides an interdisciplinary focus to researching women in historical, cross cultural and contemporary contexts. Examples of research topics include: the disappearing woman: domestic violence, social policy and feminism; death rights: hearing older women's voices in the voluntary euthanasia debate; women's experiences as workers in feminist organisations.

[www.jcu.edu.au/sass](http://www.jcu.edu.au/sass)



NEED  
MORE  
INFO?

Visit the Graduate Research School website  
[www.jcu.edu.au/grs](http://www.jcu.edu.au/grs)



**Nguyen Thi Hong Dao**

*Vietnam*

**Master of Economics**

*The primary reason I chose JCU over other institutions was the course flexibility that allowed me to undertake a minor thesis option. This feature exactly met my expectations to experience in-class lectures and acquire essential research skills necessary for higher education. I am most impressed by the supportive and approachable staff and lecturers at JCU. It seems to me that whenever I face a difficulty, I can easily seek help and useful advice from my lecturers, staff at James Cook International, or learning advisors.*





# Faculty of Law, Business and the Creative Arts



*The Faculty provides courses in business, law, conflict resolution, tourism, information technology and the creative arts that are innovative and industry recognised. All courses focus on learning outcomes with professional relevance and practical application. The Faculty's research has an emphasis on sustainable business and creative communities for the tropics.*

A diverse range of disciplines is covered by the Faculty, which comprises the following Schools

- School of Business
- School of Law
- School of Creative Arts

### **The School of Business**

The School of Business offers a range of innovative and highly respected postgraduate courses in areas such as accounting, business administration, law, economics, information technology, finance, international tourism, human resource management, international business, management and marketing. Some of the more popular courses available include the Master of Professional Accounting, Master of Business Administration, Master of Information Technology and Master of Economics.

### **The School of Law**

The School of Law offers masters and doctoral research degrees plus a suite of coursework programs in conflict and dispute resolution. The School has recognised research strengths in conflict resolution, medical law and ethics, taxation and commercial law, human rights law, native title and environmental law, Indigenous peoples and the law, and globalisation and law.

### **The School of Creative Arts**

The School of Creative Arts offers a broad spectrum of research possibilities across the creative arts through its trademark emphasis on practice-based research. The School is based at the award-winning, modern creative arts precinct on the Townsville campus with a niche campus also located in Cairns. Creative artists from various locations are enrolled in doctoral programs.

## Postgraduate Study Areas

- Accounting
- Business
- Creative Arts
- Commerce
- Conflict and Dispute Resolution
- Economics
- Human Resource Management
- Illustration and Visual Media
- Information Technology
  - Business Informatics
  - Computing and Networking
- Interactive Technologies and Game Design
- International Tourism
- Finance
- Law
- Management
- Marketing
- Media Design
- Music and Sound Media
- Native Title Studies
- New Media
- Performance Arts
- Photography
- Photomedia
- Theatre
- Tourism
- Visual Arts

[www.jcu.edu.au/flbca](http://www.jcu.edu.au/flbca)

# Postgraduate Coursework Study Options

Below are brief descriptions of the postgraduate coursework study options offered at James Cook University through the Faculty of Law, Business and the Creative Arts. Detailed information and course structure can be found on the Courses and Degrees website [www.jcu.edu.au/courses](http://www.jcu.edu.au/courses).

## MASTER OF BUSINESS ADMINISTRATION (MBA)

Recognised as the premier management and business administration qualification, the JCU MBA offers a wide variety of career opportunities in the private, public and government sectors of the global economy. The knowledge, expertise and skills developed in this MBA program prepare students for managerial positions in varied industries and organisations around the world. Students can study a MBA – General Management strand (Townsville, Cairns, Singapore and Brisbane campuses) or an MBA with a major in

- Managerial Accounting (all campuses)
- Dispute Resolution (Townsville only)
- Marketing (Brisbane and Singapore only)
- Human Resource Management (Singapore only)
- International Tourism (Townsville only)

Graduates can apply for membership to the Australian Institute of Management (AIM). Students are able to progress from a **Graduate Certificate of Business Administration** to a **Graduate Diploma of Business Administration**, and then to the MBA if desired.

It is also possible to study a number of double degrees at JCU – gaining two qualifications in a shorter amount of time. The Master of Business Administration can also be combined as a joint degree with Information Technology, Public Health, Professional Accounting and Conflict and Dispute Resolution.

### Managerial Accounting

This major focuses on the use of accounting information by managers of organisations. Students will gain an understanding of the main financial statements produced by an accounting system and the processes by which these are developed. Topics range from basic managerial accounting concepts to more complex issues of using accounting information

systems for budgeting, profit planning, performance and control, within a variety of organisational structures.

A selection of subjects for this major include

- Data Analysis and Decision Modelling
- Introduction to Accounting
- Management Accounting
- Strategic Performance Management

### Dispute Resolution

This major is immensely valuable for managers and professionals who deal with dispute resolution and conflict management on a regular basis as well as more generally for all managers who need a structured approach to exploring issues and bringing diverse opinions and stakeholder interests together. This major focuses on negotiation, conflict management strategies and mediation, with the opportunity to consider specific disputes contexts.

A selection of subjects for this major include

- Conflict and Dispute Analysis
- Negotiation
- Mediation
- Conflict Coaching
- Workplace Dispute Resolution

### Human Resource Management (HRM)

This major is designed for those wishing to enhance their awareness and understanding of issues relating to the management of people in the workplace. This major explores the strategic role of HRM in contemporary and future organisations; analyses critical issues relating to cross-cultural HRM activities of multi-national organisations and smaller organisations working in a global context; and examines the employment relationship, in particular the role of key players and institutional parties such as government, employer associations and unions and their impact upon management and employees.

A selection of subjects for this major include

- People in Organisations
- Employment Relations
- International HRM
- Contemporary Issues in HRM

### Marketing

The Marketing major is designed for non-marketers to gain a holistic view of the exciting and dynamic world of marketing. Through the core subjects a sound understanding of basic principles and language of marketing theory and practice will be achieved. As the brand is the most important intangible asset of any organisation, an understanding of the theory and practical management of brands is essential when aligning brand and corporate strategy. Knowledge gained from these prior areas is leveraged into the global context with a focus on marketing products and services internationally.

A selection of subjects for this major include

- Marketing Management
- Managing Entrepreneurial Enterprises
- Global Marketing
- Strategic Brand Management

### International Tourism

This major encompasses study in what is a dynamic and exciting industry, which plays a major role in the local economies of most regions. The major in International Tourism is designed to build on the solid business core of the MBA by providing a specialised understanding of the tourism industry. The major has a strong focus on sustainable and nature-based tourism at both an individual business and destination level. A highlight of this major is an intensive week-long field trip through northern Queensland.

A selection of subjects for this major include

- Sustainable Enterprise
- Managing Tourism in Protected Areas (incorporating field trip)
- Global Destination Competitiveness
- Tourist Management Strategies

## MASTER OF CONFLICT AND DISPUTE RESOLUTION

The Master of Conflict and Dispute Resolution program is a dynamic, innovative and flexible program. It is designed to offer postgraduate students with a world-class learning experience, providing the knowledge and skills to analyse, manage and resolve conflict in a wide variety of contexts. All program staff are conflict resolution practitioners with extensive practical experience and a dynamic level of passion for the field. Conflict management skills are essential in any context where people interact. This qualification is open to graduates from any discipline. The degree draws heavily on conflict analysis, negotiation and mediated dispute resolution as well as dealing with cross-cultural conflict resolution issues relevant to the tropics. The course is relevant for anyone who works with people, and particularly those with a management role, or those who wish to work as a mediator, conciliator or conflict support professional. Related programs include the **Graduate Certificate of Conflict and Dispute Resolution**, **Graduate Diploma of Conflict and Dispute Resolution** (distance education only) and a two-year joint **Master of Business Administration / Master of Conflict and Dispute Resolution**.

A selection of subjects for this course include

- Conflict and Dispute Analysis
- Negotiation
- Mediation and Advanced Mediation
- Workplace Dispute Resolution
- Public Interest and Multi-party Disputes
- Conflict Coaching
- Cross-cultural Conflict Resolution

## MASTER OF ECONOMICS

JCU's Master of Economics by coursework is specifically designed for students with little



prior background in economics and will be of greatest benefit to those who (a) hold jobs in which a solid understanding of economics is required, (b) aspire to be promoted to a job where a solid understanding of economics is expected, and/or (c) are considering a "job move" into sectors in which economics expertise is vital. The course provides training in the key areas of economics, such as: macroeconomic policy and financial markets; pricing, profitability and firm behaviour; government intervention in the labour market, the environment and the health sector; regional economic disparities, development and international trade; forecasting and econometrics.

Additional, elective subjects in the areas of business law, finance and accounting equip graduates with the knowledge and skills that are vital in key decision making processes be it in the public or the private sector. Additionally, students can elect to complete a major in Environmental Management or in Political Economy, which is complementary to their economics degree, or alternatively write a minor thesis to gain research skills.

Students can study by coursework only or coursework and a small research thesis. The **Postgraduate Diploma of Economics** consists of the first year of the Master of Economics and is a pathway to the Masters.

#### General

A selection of subjects for this major include

- Managerial Economics
- Economic Growth and Regional Development
- Macroeconomic Policy
- International Trade

#### Environmental Management

Environmental Management is the specialist area of economics that focuses on the key links between economics and the environment. Studying issues such as environmental sustainability and the management of protected environments on the back of a strong economics fundament, this major prepares students for a career in any area relating to natural resource and/or environmental management.

A selection of subjects for this major include

- Environmental Economics
- Environmental Impact Assessment
- World Heritage and National Estate Processes
- Sustainable Enterprise

#### Political Economy

Political Economy is the specialist area of economics that harnesses the fundamental links between economics and politics. The major in Political Economy prepares students for a career in the international relations arena, studying global governance structures and democratisation processes on the back of a strong economics fundament.

A selection of subjects for this major include

- Asia Pacific Development: Culture and Globalisation
- International Relations and Global Governance
- Governance, Democratisation

- and the State
- Case Studies in Applied Economics and Finance

#### MASTER OF INFORMATION TECHNOLOGY and MASTER OF INFORMATION TECHNOLOGY (EXTENDED)

This course provides information technology (IT) graduates with advanced, up-to-the-minute skills and knowledge required for success in today's fast moving IT industry. The program is available in several specialist fields of IT, all of which play a leading role in the industry

- Business Informatics
- Computing and Networking
- Interactive Technologies and Game Design

The Master of Information Technology (Extended) is a two-year program which, by way of four extra subjects, provides additional breadth of study either for those students without an IT background, or as a bridging facility for students who do not meet the standard JCU entry criteria. Both courses are also offered as a joint degree with the Master of Business Administration (MBA). A **Graduate Certificate of Information Technology** and **Graduate Diploma of Information Technology** are also on offer.

#### Business Informatics

A postgraduate Business Informatics major will give you the skills to administer the back office IT operations in large corporate environments (banks, governments, industry, etc). You could become a systems architect designing the

interoperating IT tools and services that keep organisations running and working effectively.

A selection of subjects for this major include

- E-Business Technologies
- Advanced E-Security
- Enterprise Database Systems – Oracle
- Marketing and Innovation

#### Interactive Technologies and Game Design

Electronic games and animation are now an integral part of the enormous global entertainment industry. Social networking and online video share sites like Facebook, Twitter and You Tube attract hundreds of millions of users worldwide. Interactive Technologies and Games Design is for those wanting to obtain superior skills relevant to the interactive entertainment and simulation industry.

A selection of subjects for this major include

- E-Business Technologies
- Advanced Game Design
- Advanced Animation Techniques
- Intelligent Agents and Simulation

#### Computing and Networking

The Computing and Networking major is designed for information technology and computer science graduates and recognised IT professionals who seek to further their knowledge and skills in advanced computing, programming, information systems and networking.

A selection of subjects for this major include

- Advanced E-Security
- Advanced Human Computer Interaction
- Advanced Data Mining and Knowledge Discovery
- Advanced Data Communication Principles

## MASTER OF INFORMATION TECHNOLOGY/ MASTER OF BUSINESS ADMINISTRATION (MIT/MBA)

The Master of Information Technology can also be combined to form a joint degree with the Master of Business Administration. The additional skills and knowledge acquired through this program increase graduates' employability. Information Technology can also be studied at JCU in the form of a Graduate Certificate and Graduate Diploma program. A **Master of Information Technology (Extended) / Master of Business Administration** is also available.

## MASTER OF PROFESSIONAL ACCOUNTING (MPA)

The MPA is designed to provide students from a non-accounting background with the skills to operate as professional accountants in the 21st century. Accounting graduates enjoy a wide range of employment opportunities in the public and private sector including: public accounting practice; auditing; financial analysis;

financial and management accounting; management consulting; banking; stock broking; systems support and analysis; taxation and financial advising. The program is fully accredited by CPA Australia. Other related programs include the **Graduate Certificate and Graduate Diploma of Professional Accounting (MPA) / Master of Business Administration (MBA)**.

A selection of subjects for this course include

- Management Accounting
- Corporate Finance
- Accounting for Corporations
- Strategic Performance Management
- Business Law
- Auditing and Assurance Services

## MASTER OF PROFESSIONAL ACCOUNTING / MASTER OF BUSINESS ADMINISTRATION (MPA/MBA)

The MPA/MBA program gives students a good understanding of business with an in-depth accounting perspective, and provides the student with two high-level awards in reduced time. Key areas of study are finance and accounting, and students are also exposed to essential management areas such as human relations, marketing, business law, taxation, economics and business information systems. Upon completion graduates will

have attained the skills necessary to operate as professional accountants and to prepare for senior management positions. This program combines 12 accounting subjects with four core MBA subjects, which permits graduates entry to associate membership of CPA Australia and the Institute of Chartered Accountants in Australia.

## GRADUATE DIPLOMA OF CREATIVE ARTS

This program gives graduates an opportunity to study a broad range of subjects in a specific discipline or hybrid creative arts pathway. This coursework program is designed for graduates who wish to pursue studies in either a single study area or multiple study areas within the School of Creative Arts. A broad range of subjects is available, enabling students to pursue either a specific discipline or hybrid creative arts pathway.

Subjects are available from the following majors

- Communication Design
- Contemporary Theatre
- Illustration and Visual Media
- Media Design
- Music and Digital Sound
- New Media Arts
- Performance
- Photomedia
- Visual Arts

The School of Creative Arts has specialist facilities, digital media labs, music technology laboratories; music and performance rehearsal rooms, a professional theatre, studios for visual investigations, a

gallery, and multimedia and visual communication studios.

## GRADUATE DIPLOMA AND GRADUATE CERTIFICATE OF LEGAL STUDIES

These programs enable graduates from other disciplines (e.g. legal studies teachers, police officers, middle level managers from the public and private sectors, or those for whom law and/or legal studies is simply an interest) to undertake legal studies, often in specialist areas relevant to their present or intended employment.

## POSTGRADUATE QUALIFYING PROGRAM – BUSINESS

The Postgraduate Qualifying Program (PQP) – Business is an academic semester program aimed at preparing you for entry to James Cook University postgraduate coursework degrees in Business, Accounting, Economics and Tourism. The program is designed for students whose academic qualifications are marginally below the standard entry requirements.

**Please note** that the PQP subjects completed are not credited into the Masters program. Successful completion of the PQP guarantees a place in the relevant Masters, Graduate Diploma or Graduate Certificate coursework program (subject to meeting academic progression criteria).



# Postgraduate Research Study Options

The following section gives a brief overview of the higher research degrees available at JCU.

For more detail on areas of research strength, academic profile and more, please visit the individual web sites listed here. A list of potential research topics is also available at [www.jcu.edu.au/grs/topics](http://www.jcu.edu.au/grs/topics). All research enquiries should be emailed to [researchstudenthelp@jcu.edu.au](mailto:researchstudenthelp@jcu.edu.au) and copied to [iscadmissions@jcu.edu.au](mailto:iscadmissions@jcu.edu.au) to ensure contact is made with the appropriate person. Information is given later in this publication on how to apply for research degrees (page 62) and on JCU's academic and English language entry requirements (page 54).

**Please note:** All research degrees fall under the English Band 2 requirement.

## ACCOUNTING AND FINANCE

### Doctor of Philosophy – Business (Accounting)

Principal areas of research in the accounting and finance areas include

- Behavioural issues in accounting
- Sustainable business practices in Australia
- Budgeting and internal control systems
- Corporate governance – accounting and legal issues
- Stock market reactions to accounting information
- Asset measurement

[www.jcu.edu.au/business](http://www.jcu.edu.au/business)

## BUSINESS

### Master of Philosophy - Business Doctor of Philosophy - Business

The School of Business' research foci are wide and varied, and include business, economics, human resource management, management and marketing. Examples of current research include

- Australian construction firms in China and Indonesia
- Competitive bidding and outsourcing
- Environmental economics
- Foreign exchange risk management
- Marketing (tourism, services and electronic)
- Tourism

[www.jcu.edu.au/business](http://www.jcu.edu.au/business)

## INFORMATION TECHNOLOGY

### Master of Philosophy – Business (Information Technology) Master of Philosophy – Business (Computer Science)

### Doctor of Philosophy – Business (Computer Science) Doctor of Philosophy – Business (Information Technology)

Principal areas of research include bioinformatics, grid computing and scientific visualisation, broadband and mobile networking, mobile computing and selected computer science fields. JCU's Bioinformatics Applications Research Centre (BARC) engages in research, training, development and support in several areas of bioinformatics. JCU also boasts VeRG, the Visualisation, e-Research and Grid Lab, focusing on the development of IT tools, methods and practical implementations of distributed computing and remote collaboration. E-research is highly relevant to JCU as a multicampus university, as it allows researchers to work in a virtual way, independent of distance and location. Students also benefit from the School's close ties with collaborative partners including Queensland Parallel Supercomputing Foundation, Indiana University (Pervasive Technologies lab); the Australian Institute of Marine Science; and the Universities of Queensland and Tasmania.

[www.jcu.edu.au/business](http://www.jcu.edu.au/business)

## CREATIVE ARTS

### Master of Philosophy (Creative Arts) Doctor of Philosophy

Students in these degrees undertake an integrated project encompassing creative work (e.g. exhibition, performance, production, creative text) and appropriate documentary evidence of both the creative practice and the theoretical underpinnings of the work. Research opportunities include artists' books, ceramics, composition, creative writing, fibre arts, graphic design, illustration,

multimedia, music technology, musical composition, new media, musical criticism and analysis, musical performance, painting and drawing, photography, film, video, television, playwriting, printmaking, sculpture, theatre design, theatre performance (acting), theatre directing and acting.

[www.jcu.edu.au/soca](http://www.jcu.edu.au/soca)

## ECONOMICS

### Master of Economics (Research) Master of Philosophy – Business (Economics) Doctor of Philosophy – Business (Economics)

The PhD program targets students who wish to use their acquired analytical skills to interrogate a particular research topic. JCU has economists with expertise in a wide variety of research areas and can therefore accommodate a wide range of student research interests. JCU economics has a strong record in both volumes of research students and completion rates. The list below contains a snapshot of research topics of our current research students, which is by no means exhaustive, but indicative of the type of post graduate research in economics done at JCU.

- Board structure Pacific Islands
- Trade balance China
- Economic growth Indonesia
- Human well-being
- Valuation of non-tangibles
- Drivers of migration

[www.jcu.edu.au/business](http://www.jcu.edu.au/business)

## LAW

### Master of Laws Doctor of Philosophy

The School of Law at JCU has research strengths in conflict resolution, criminal law,

international law, medical law, ethics, taxation law, commercial law and human rights law. It provides graduates with research experience of at least one year of research training leading to a thesis that is externally examined. Some coursework components may be included.

[www.jcu.edu.au/law/research](http://www.jcu.edu.au/law/research)

## MANAGEMENT

### Master of Philosophy – Business (Management) Doctor of Philosophy – Business (Management)

The diversity of possible topics is considerable and students may research within one or across other program areas (Tourism, Economics, Accounting and Finance, Management) within their research. Current research interests include

- Crisis management: implications for various business sectors
- The e-Commerce interface and database design
- Strategic e-Business: sustainable competitive advantage
- Demand chain management: 4th generation logistics and QFD
- Human resource management in the hospitality and tourism industries
- Service quality
- Organisational ethics and climate
- Foreign direct investment in Asian businesses

[www.jcu.edu.au/business](http://www.jcu.edu.au/business)

## MARKETING

### Master of Philosophy – Business (Marketing)

Current research interests and topics can be found at [www.jcu.edu.au/business](http://www.jcu.edu.au/business)

## MUSIC

### Master of Philosophy (Creative Arts) Doctor of Philosophy

Offered by the School of Creative Arts, this is a specialist qualification that focuses on performance, composition, technology, or research. The program concentrates on the need for methodology/formal recognition of the techniques and issues involved in music research documentation and practice. This approach leads students to a critical examination of the theoretical and practical aspects of a variety of research strategies as well as providing experience of music techniques. Students are introduced to flexible delivery

formats that allow for audio-visual presentation, performance, discussion and other practical activities. Students are examined on their creative research output and integrated thesis documentation.

[www.jcu.edu.au/soca](http://www.jcu.edu.au/soca)

## TOURISM

### Master of Philosophy - Business (Tourism) Doctor of Philosophy - Business (Tourism)

These degrees comprise a substantial thesis component and may be taken by graduates from other disciplines that have industry experience and can demonstrate research skills. The World Tourism

Organisation has recognised JCU as a leader in tourism education since 1993 and JCU has been granted associate membership of the The-ICE (International Centre of Excellence in Tourism and Hospitality). A study of tourism research ranked JCU amongst the top three tourism education institutions in the Asia-Pacific, and among the top 12 in the world. Another ranking of leading tourism scholars published by the prestigious journal *Tourism Management*, places JCU in third place worldwide after Texas A&M University and the University of Surrey. The Cairns and Townsville campus cities are in the heart of Australia's most popular tourist region, and offer many opportunities for ecotourism and

general tourism study, work and research. Examples of research interests include

- Tourist motivation
- Tourism planning
- Community impact
- Ecotourism and sustainable tourism development
- Tourism in marine environments
- Museums and visitor centres
- Tourist interpretation
- Market research and segmentation
- The backpacker market
- Tourism marketing and branding
- Tourist attraction management
- Tourism futures

[www.jcu.edu.au/business/postgraduate](http://www.jcu.edu.au/business/postgraduate)



NEED  
MORE  
INFO?

Visit the Graduate Research School website  
[www.jcu.edu.au/grs](http://www.jcu.edu.au/grs)

# Research Centre Profile

## Centre for Tropical Tourism Studies

Tourism plays a vital economic and societal role internationally, in North Queensland and in many regions in the tropics. The research focused Centre for Tropical Tourism Studies at James Cook University undertakes tourism research with a specific emphasis on tourism in tropical regions. The Centre provides access to a unique tropical location that includes the world-heritage-listed Great Barrier Reef and the Wet Tropics Rainforests.

[www.jcu.edu.au/ctth](http://www.jcu.edu.au/ctth)





## Svetlana Ukolova

Russia

Doctor of Philosophy  
(Biochemistry and  
Molecular Biology)

“After my undergraduate studies I wanted to experience the Australian lifestyle and at the same time improve my English. Australia is a unique country that provides a very high standard of living, and of course great weather every day. JCU offers a unique location, interesting research topics, and has many research stations. Throughout my PhD project I encountered many challenges but there were always people ready to help me, and I enjoyed my studies greatly. JCU also provided me with a scholarship for my research program that covered both living costs and my tuition. Career opportunities available in this country are not to miss and the great friends I met here are priceless.”



# Faculty of Medicine, Health and Molecular Sciences



***The Faculty is a world leader in tropical health and medical research and makes a significant contribution to the health of communities in northern Australia and beyond.***

***A comprehensive range of postgraduate courses for medical and health professionals, and biomedical and molecular scientists is available. The health sciences are one of the fastest growing areas of employment.***

Teaching and research facilities are outstanding, and the health and medicine precinct at JCU Townsville is strategically positioned adjacent to Townsville's \$200 million general hospital, enhancing the strong clinical orientation of many courses. JCU's School of Medicine is the only full medical school in northern Australia, with state-of-the-art teaching technologies and facilities.

The Anton Breinl Centre for Public Health and Tropical Medicine has special expertise in tropical medicine, international health and disaster medicine and includes one of Australia's largest public health programs for doctors and other health professionals, the Master of Public Health and Tropical Medicine. A new centre of excellence for rehabilitation sciences brings together occupational therapy, speech pathology, physiotherapy and sport and exercise science teaching.

The Institute of Sport and Exercise Science is a unique teaching and research facility examining exercise and sports performance in the tropics.

The Australian Institute of Tropical Veterinary and Animal Sciences is a focus for research and graduate studies in veterinary and animal science. The Veterinary Emergency Centre and Hospital includes operating theatres and radiology facilities as well as a public veterinary clinic service.

The Australian Institute of Tropical Medicine, the Faculty's premier research organisation, brings together leading researchers in these distinct areas

- Biosecurity
- Comparative Genomics Centre
- Drugs, Development Design and Delivery
- Health, Workforce and Education in Rural Indigenous and Tropical Communities
- North Queensland Centre for Cancer Research
- Tropical Infectious Diseases

## Postgraduate Study Areas

- Biomedical Sciences
- Chemistry
- Disaster and Refugee Health
- Environmental Chemistry
- Immunology
- Medicine
- Microbiology
- Molecular Biology
- Nursing Science
- Occupational Therapy
- Pharmacology
- Pharmacy
- Physiology
- Physiotherapy
- Public Health and Tropical Medicine
- Rehabilitation Sciences
- Rural and Remote Medicine
- Speech Pathology
- Sport and Exercise Science
- Travel Medicine
- Tropical Animal Science
- Tropical Medicine and Hygiene
- Tropical Veterinary Science

[www.jcu.edu.au/fmhms](http://www.jcu.edu.au/fmhms)

# Postgraduate Coursework Study Options

Below are brief descriptions of the postgraduate coursework study options offered at James Cook University through the Faculty of Medicine, Health and Molecular Sciences. Detailed information and course structure can be found on the Courses and Degrees website [www.jcu.edu.au/courses](http://www.jcu.edu.au/courses).

## DOCTOR OF CLINICAL DENTISTRY

This is a professional doctorate suitable for registered dental practitioners who wish to gain further experience and specialise in a discipline of dentistry. This program enables dentists to acquire advanced skills and knowledge in a specialist field of dental practice and provides for specialist training and specialist practice in Orthodontics.

The Doctor of Clinical Dentistry will have a number of possible majors that will be introduced over time. The first of these to be introduced is Orthodontics. The program comprises coursework and clinical practice in the Tropical Queensland Centre for Oral Health (TQCOH) on the Cairns Campus. Students will also undertake clinical practice in Queensland Health clinics.

## MASTER OF BIOMEDICAL SCIENCES

This is a flexible degree that embraces three majors:

- Aquatic Microbiology
- Clinical Microbiology
- Physiology and Pharmacology

These strands offer science graduates advanced level training in aquatic pathobiology, clinical and food microbiology, and physiology and pharmacology, relevant to the domains of human and veterinary endeavour. With excellent equipment and technology for the study of biomedical sciences available that includes the Queensland Magnetic Resonance Centre as well as the facilities at the tertiary teaching hospital on-campus. Related programs include the **Graduate Certificate of Biomedical Sciences** and **Graduate Diploma of Biomedical Sciences**.

### Aquatic Microbiology

A selection of subjects for this major include

- General Pathobiology
- Advanced Aquatic Pathobiology
- Advanced Marine Microbiology

- Independent Project

### Clinical Microbiology

A selection of subjects for this major include

- Advanced Clinical Microbiology
- Food Microbiology
- Microbiology and Immunology
- General Pathobiology

### Physiology and Pharmacology

Students with an interest in physiology or pharmacology should consult the course coordinator at [postgrad.mhms@jcu.edu.au](mailto:postgrad.mhms@jcu.edu.au) to devise a study program.

## MASTER OF PUBLIC HEALTH

This degree enables qualified health professionals to gain postgraduate qualifications in the health sector. Four majors are available (as well as a general program)

- Aeromedical Retrieval
- Biosecurity and Disaster Preparedness
- Communicable Disease Control
- Health Promotion

This is a flexible course. After consultation with the academic advisor, students devise a program of study in one of the four majors or a tailored/general program that suits their professional goals and interests.

### Aeromedical Retrieval

A selection of subjects for this major include

- Aeromedical Retrieval
- Clinical Care Skills in Aeromedical Retrieval
- Flight Crew Skills in Aeromedical Retrieval

### Biosecurity and Disaster Preparedness

A selection of subjects for this major include

- Communicable Disease Control
- Disaster Health Management
- International Health Agencies and Development
- Public Health and Bioterrorism

### Communicable Disease Control

A selection of subjects for this major include

- Infectious Diseases
- Human Parasitology
- Communicable Disease Control
- Public Health and Bioterrorism

### Health Promotion

A selection of subjects for this major include

- Health Promotion Needs Assessment and Planning
- Health Promotion Strategies and Methods
- Health Promotion Research and Evaluation

## MASTER OF PUBLIC HEALTH / MASTER OF BUSINESS ADMINISTRATION (MPH/MBA)

This joint Masters program is designed to enable health professionals to gain advanced management skills while undertaking further study in their area of specialisation. Graduates can apply for membership of the Australian Institute of Management.

This joint Masters has been designed to enable health professionals to gain advanced management skills while undertaking further study in their area of specialisation. The program aims to develop knowledge and skills for

- Understanding current major public health and management issues
- Managing information and human financial resources within health care delivery organisations
- Critical analysis by health managers in the context of national and global economic and political environments
- Identification and analysis of management issues in health care delivery organisations and the identification of appropriate solutions.

## MASTER OF PUBLIC HEALTH AND TROPICAL MEDICINE

This degree is unique in Australia, addressing both public health

and tropical medicine issues. The range of electives gives the opportunity for specialised focus on tropical Australia, including Aboriginal and Islander health or on Australia's tropical neighbours. Many subjects are offered as flexible delivery, which includes external mode (distance education), limited attendance mode and block mode/intensives. This is a 1.5 year course and a one-year **Postgraduate Diploma of Public Health and Tropical Medicine** is also available.

A selection of subjects for this course include

- Tropical Medicine
- Epidemiology for Public Health
- Human Health and Environmental Change
- Public Health Management
- Crisis Leadership and Management

## MASTER OF RURAL AND REMOTE MEDICINE

This course is designed to provide medical practitioners, particularly those based in rural and remote communities, with a pathway for advancing their academic and clinical expertise. The Master of Rural and Remote Medicine is available as a generic program or students can choose to major in Vocational Preparation. A **Postgraduate Diploma of Rural and Remote Medicine** is also available.

A selection of subjects for this course include

- Rural and Remote Medicine
- Reflections on Practice
- Clinical Supervision for Rural Medical Practitioners
- Developing Continuing Medical Educational Programs
- Independent Study Project

## MASTER OF SCIENCE

JCU's Master of Science enables graduates to pursue further studies in specialist areas. Study areas available for the biomedical sciences include

- Biochemistry
- Immunology
- Microbiology
- Pharmacology
- Physiology

Coursework programs are flexible, with electives available across the above disciplines. Students devise a program of study in consultation with the course coordinator to match their professional goals or interests. The **Graduate Certificate of Science** and **Graduate Diploma of Science** are also available.

### MASTER OF TROPICAL ANIMAL SCIENCE

This course is available to graduates from agricultural science, animal science, rural science, science or related degrees. A range of options are available including animal nutrition, aquatic pathobiology and parasitology. The program involves scientists from the Queensland Department of Primary Industries and the Commonwealth's CSIRO

who contribute to seminars and practical sessions. In addition to coursework subjects, each student may carry out a research project in a special area of interest, which may involve both field and laboratory studies. The field can also be studied under a **Graduate Certificate** or **Graduate Diploma of Tropical Animal Science**.

A selection of subjects for this course include

- Animal Production
- Advanced Immunology
- Systemic Pathology
- Host-Parasite Relationships
- Animal Reproduction and Management

### MASTER OF TROPICAL VETERINARY SCIENCE

This course is available to veterinary science graduates who wish to further their training and seek an innovative learning environment. The program is recognised by

Surgeons Registration Boards in all Australian States and Territories. A **Postgraduate Diploma of Tropical Veterinary Science** is also available.

A selection of subjects for this course include

- Animal Health
- Advanced Immunology
- Diagnostic Pathology
- Animal Nutrition
- Advances in Veterinary Parasitology

### POSTGRADUATE DIPLOMA OF TROPICAL MEDICINE AND HYGIENE

This postgraduate diploma enables medical practitioners to undertake advanced studies in health and medical issues facing tropical Australia, the western Pacific and Southeast Asia. This course is accredited by the Fellowship of the Australasian College of Tropical Medicine.

A selection of subjects for this course include

- Tropical Medicine
- Tropical Public Health
- Human Parasitology
- Epidemiology for Public Health
- Medical Entomology

### POSTGRADUATE CERTIFICATE OF DISASTER AND REFUGEE HEALTH

This certificate provides training centred on working in the field of disaster and refugee health, both in Australia and internationally. The program has a rural and remote focus while still dealing with urban disaster and refugee health issues.

A selection of subjects for this course include

- Refugee Health
- Disaster Health Management
- Elective subjects for Public Health and Tropical Medicine Programs



NEED  
MORE  
INFO?

Visit the Courses and Degrees website  
[www.jcu.edu.au/courses](http://www.jcu.edu.au/courses)

# Postgraduate Research Study Options

The following section gives a brief overview of the higher research degrees available at JCU. Research degrees are listed alphabetically by field of study.

For more detail on areas of research strength, academic profile and more, please visit the individual web sites listed here. A list of potential research topics is also available at [www.jcu.edu.au/grs/topics](http://www.jcu.edu.au/grs/topics). All research enquiries should be emailed to [researchstudenthelp@jcu.edu.au](mailto:researchstudenthelp@jcu.edu.au) and copied to [iscadmissions@jcu.edu.au](mailto:iscadmissions@jcu.edu.au) to ensure contact is made with the appropriate person. Information is given later in this publication on how to apply for research degrees (page 62) and on JCU's academic and English language entry requirements (page 54).

**Please note:** All research degrees fall under the English Band 2 requirement.

## BIOMEDICAL SCIENCES

### Master of Biomedical Sciences Master of Science Doctor of Philosophy

Research strengths include: cardiac/skeletal muscle metabolism and cellular bioenergetics; hyperbaric medicine; immunology and pathology of disease; microbiology of infectious diseases; visual science; respiratory physiology; neuroscience and pharmacology; nutrition and metabolism and reproductive physiology. Particular areas of research include: animal breeding; aquatic pathobiology; epidemiology and biometrics; pathology, microbiology, immunology and parasitology of livestock and farmed aquatic animals; reproductive physiology and biology; ruminant nutrition and metabolism; stress; and diseases of amphibians. Students have access to advanced facilities, including: tissue culture suites; histology processing and microscopy; molecular biology equipment; radioscope suite, and medical laboratory facilities.

[www.jcu.edu.au/vbms](http://www.jcu.edu.au/vbms)

## IMMUNOLOGY AND MICROBIOLOGY

### Master of Biomedical Sciences Master of Science Doctor of Philosophy

Collaborating with several renowned institutions, the School of Veterinary and Biomedical Sciences offers these programs to promote and develop research in a range of discipline areas that are often pertinent to the tropical location of the university. Current areas of investigation include

- Epidemiology of melioidosis in Papua New Guinea
- Molecular diagnostics for Marek's disease

- Strains of Monodon Baculovirus [www.jcu.edu.au/vbms](http://www.jcu.edu.au/vbms)

The following special interest groups and professional organisations are also closely connected with the work undertaken in these programs

- Australian Society for Immunology
- Australian Society for Microbiology
- Australian Veterinary Association
- Australian Veterinary Poultry Association
- Australian College of Veterinary Science
- Australasian College of Tropical Medicine

[www.jcu.edu.au/vbms/research/mi](http://www.jcu.edu.au/vbms/research/mi)

## MEDICINE

### Master of Medicine Doctor of Philosophy

It is important to note that these programs are not suitable for MBBS graduates wishing to gain a specialisation in order to practise in Australia. The Master of Medicine by research is designed to bridge the gap between the Bachelor of Medicine / Bachelor of Surgery (MBBS) and Doctor of Philosophy by allowing MBBS graduates to undertake a supervised research project integrating basic and clinical medical sciences. Topics may come from approved disciplines, including: internal medicine, surgery, psychiatry, obstetrics and gynaecology, general practice, rural medicine, paediatrics or pathology. JCU's School of Medicine is one of the newest in the country, and the only full medical school in Northern Australia. The health and medicine precinct next to the Townsville campus has outstanding facilities, incorporating the main teaching hospital for north-eastern Australia and parts of the Asia-Pacific.

[www.jcu.edu.au/smd/medicine/inforabout/ourresearch](http://www.jcu.edu.au/smd/medicine/inforabout/ourresearch)

## NURSING SCIENCE

### Master of Nursing Science Doctor of Nursing Science Doctor of Philosophy

JCU's School of Nursing Science enjoys close partnerships with local hospitals and health organisations, and its research strengths reflect the diversity of expertise within the discipline, including

- Decision-making of women concerning early breast cancer treatment
- Homelessness and mental illness
- Managing victims of Irukandji syndrome
- Mothers' experiences which contribute to early detection of subtle developmental problems in their child
- Mental health effects of bullying in the nursing workforce
- The dialectic of control: A critical ethnography of renal nurses' decision-making

[www.jcu.edu.au/nursing](http://www.jcu.edu.au/nursing)

## OCCUPATIONAL THERAPY

### Master of Occupational Therapy Doctor of Philosophy

Research in this field has a special focus on population health, and in particular as it relates to northern Australia, Aboriginal and Torres Strait Islander communities and Australia's near neighbours. Examples of current research include: assessment techniques for technology prescription for people with severe disabilities; effectiveness of occupational therapy intervention with Vietnam veterans; experience of Indigenous clients with spinal cord injury; occupational therapy and post-

traumatic stress disorder; therapy and technologies for children with disabilities; office ergonomics; supervision and support for rural and remote occupational therapy; and delivery of accessible tertiary education to people with disabilities.

[www.jcu.edu.au/phtmrms](http://www.jcu.edu.au/phtmrms)

## PHARMACOLOGY AND PHYSIOLOGY

### Master of Biomedical Sciences Master of Science Doctor of Philosophy

*Also see Biomedical Sciences*  
These degrees aim to investigate fields of study such as

- cardiovascular physiology
- neuropharmacology
- nutrition physiology and metabolism

[www.jcu.edu.au/vbms](http://www.jcu.edu.au/vbms)

## PHARMACY

### Master of Pharmacy Doctor of Philosophy

JCU is committed to improving health outcomes through research in primary healthcare, the quality use of medicines, clinical pharmacokinetics and pharmaceuticals. Working closely with the Institute of Tropical Medicine, these areas complement research with a rural, remote, Indigenous and tropical focus. Pharmacy at JCU enjoys collaborative links with the Townsville General Hospital, and is at the forefront of piloting inter-professional learning. The research profile of the School of Pharmacy and Molecular Sciences is exceptional, covering a broad spectrum of research topics such as: pharmacy which includes pharmaceuticals; pharmacy practice and social aspects of

pharmacy; pharmacokinetics; pharmacology; drug discovery; medicinal chemistry; and molecular biology. It is important to note that this program does not lead to registration as a pharmacist in Australia.

[www.jcu.edu.au/phms](http://www.jcu.edu.au/phms)

## PUBLIC HEALTH

### Doctor of Philosophy

The School of Public Health, Tropical Medicine and Rehabilitation Sciences enjoys an excellent reputation for high quality applied and operational research in public health and tropical medicine. Anton Breinl Centre boasts one of the largest Masters and Doctoral public health training programs in Australia, and is one of an elite group of academic institutions funded by the Australian government to train public health professionals. The quality of the academic staff has been recognised with prestigious awards, including a Fulbright award, the Fred Katz Memorial Medal for international teaching excellence, a CSIRO research medal, and the Surgeon General's medal. Examples of current research include: insecticides, bioinsecticides, repellents and antimicrobials; marine insecticides and mosquitoicidal phytochemicals;

mosquito population dynamics; head lice transmission dynamics and insecticide treatment studies; vector behaviour related to hosts and insecticides; and forensic entomology.

[www.jcu.edu.au/phtmrs](http://www.jcu.edu.au/phtmrs)

## SCIENCE (MEDICINE, HEALTH AND MOLECULAR SCIENCES)

### Master of Science Doctor of Philosophy

In addition to Immunology and Microbiology, Pharmacology and Physiology which are listed separately, JCU offers research in related disciplines. These include

- Biochemistry and Molecular Biology
- Chemistry
- Medical Entomology (*see Public Health and Tropical Medicine*)
- Parasitology (*see Public Health and Tropical Medicine, Veterinary Science*)
- Sport and Exercise Science
- Tropical Medical Science

[www.jcu.edu.au/vbms](http://www.jcu.edu.au/vbms)

## SPEECH PATHOLOGY

### Master of Speech Pathology Doctor of Philosophy

Students can select a research project in any area relevant to contemporary speech pathology practice that could include linguistics, paediatric speech and language impairments, neurogenic speech and language impairments, swallowing, clinical education or clinical practice.

[www.jcu.edu.au/phtmrs/speech](http://www.jcu.edu.au/phtmrs/speech)

## SPORT AND EXERCISE SCIENCE

### Master of Sport and Exercise Science Master of Science Doctor of Philosophy

The Institute of Sport and Exercise Science (ISES) at JCU offers research opportunities in exercise physiology, biomechanics, sport and exercise psychology, sports medicine and motor learning and control. Particular emphasis is placed on exercise and health in the tropics, chronic exercise behaviour, motivation in sport and exercise, outrigger science, diet and performance, and talent identification. Projects may be undertaken in one of the ISES research units (endurance sport, physical activity and aging, human performance in heat and humidity, and ocean sports research).

[www.jcu.edu.au/phtmrs/ises](http://www.jcu.edu.au/phtmrs/ises)

## TROPICAL ANIMAL SCIENCE AND TROPICAL VETERINARY SCIENCE

### Master of Tropical Animal Science Master of Tropical Veterinary Science Doctor of Philosophy

This is a major JCU research focus, spanning: cardiac/skeletal muscle metabolism and cellular bioenergetics; hyperbaric medicine; immunology and pathology of disease; microbiology of infectious diseases; visual science; respiratory physiology; neuroscience and pharmacology; nutrition and metabolism and reproductive physiology. Particular areas of research include: animal breeding; aquatic pathobiology; epidemiology and biometrics; pathology, microbiology, immunology and parasitology of livestock and farmed aquatic animals; reproductive physiology and biology; ruminant nutrition and metabolism; stress; and diseases of amphibians. Students also have access to advanced facilities, including: tissue culture suites; histology processing and microscopy; molecular biology equipment; radioscope suite, animal surgery unit, large and small animal housing, and medical laboratory facilities.

[www.jcu.edu.au/vbms](http://www.jcu.edu.au/vbms)



NEED  
MORE  
INFO?

Visit the Graduate Research School website  
[www.jcu.edu.au/grs](http://www.jcu.edu.au/grs)



## Yoel Goldchain Goldin

Mexico

Master of Applied Science  
(Natural Resource Management)

*I chose to study at James Cook University because of its strong position in teaching and research (and related applications) within the fields of environmental science, conservation, ecology and biology. James Cook University is a leading educational institution in these fields. The aspects that I consider the best from my course were our lecturer's broad knowledge, along with their teaching skills, the field trips and the wide variety of subjects available. Besides study there are also many aspects I like about my life here in North Queensland. Don't miss the opportunity to visit the Great Barrier Reef and other natural attractions, get a part time job, make friends from all around the world and generally open your mind to soak-up the JCU experience.*

# Faculty of Science and Engineering



***JCU's situation is unique for the study of science and the environment. In addition to our global reputation in the sciences, JCU's Cairns and Townsville campuses enjoy easy access to two World Heritage listed regions – the Great Barrier Reef and the ancient rainforests of the Wet Tropics – plus dry tropic environments, savanna and wetlands and a variety of spectacular geology.***

The Faculty's expertise, facilities and research successes in the study of these environments are world renowned, as shown by some of its rankings: in the top three in the world in its fields of research strength in ecology and environment, plant and animal science and geosciences; Australia's highest ranked university in environmental science and management, and fisheries science and research; ranked first in the world for citations in the field of coral reef ecology. The Faculty also works closely with local industries to research issues specifically relevant to the tropics.

Areas of expertise within the Faculty include

- Marine science and marine biology, including physical oceanography with particular relevance to the Great Barrier Reef
- Aquaculture
- Environmental science including conservation and natural resource management
- Exploration geology
- Geology of natural resources and environmental geoscience
- Materials science and engineering
- Tropical ecology, zoology and botany
- Tropical agricultural science including agricultural products processing

- Development studies notably practical techniques for development assistance delivery

One of the defining characteristics of studying science at JCU is the many opportunities for hands-on and practical experience, including field trips to spectacular natural environments. In addition, students can access modern laboratories and technology, field stations and research facilities, and enjoy the close links to industry and government agencies, plus lecturers who are prominent researchers in their specialisations.

The Faculty's research profile is reflected in its range of excellent research centres and facilities which include: The Australian Canopy Crane Research Facility at Cape Tribulation, Orpheus Island Research Station, The Aquarium Complex, Cyclone Structural Testing Station, Economic Geology Research Unit and fleets of research vessels including RV James Kirby.

JCU has created the Australian Tropical Science and Innovation precinct on the Townsville campus – a \$34-million development to house world-leading researchers to advance sustainable living in tropical environments.

## Postgraduate Study Areas

- Aquaculture
- Astronomy
- Biotechnology
- Botany
- Conservation Biology
- Development Practice
- Earth Sciences
- Ecology
- Engineering
- Environmental and Urban Planning
- Environmental Earth Science
- Fisheries Science
- Geography
- Geology
- Marine Biology
- Marine Science
- Mathematics and Statistics
- Natural Resource Management
- Protected Area Management
- Tropical Agricultural Science
- Tropical Urban and Regional Planning
- Wildlife Biology
- Zoology

[www.jcu.edu.au/fse](http://www.jcu.edu.au/fse)

# Postgraduate Coursework Study Options

Below are brief descriptions of the postgraduate coursework study options offered at James Cook University through the Faculty of Science and Engineering. Detailed information and course structure can be found on the Courses and Degrees website [www.jcu.edu.au/courses](http://www.jcu.edu.au/courses).

## MASTER OF DEVELOPMENT PRACTICE

This two-year course provides graduate-level students with the skills and knowledge to identify and address the global development challenges of poverty alleviation, health, conservation, climate change and agriculture. James Cook University is one of a network of universities worldwide to develop and offer this program, with generous funding from the US-based MacArthur Foundation. The Master of Development Practice is designed to produce a cohort of skilled development practitioners and effective advocates of sustainable development practice. Graduates will have broad competence in development issues and will be able to influence policies and programs in developing countries. A **Graduate Certificate** and **Graduate Diploma of Development Practice** are also available.

A selection of subjects for this course include

- Contemporary Issues in Development Practice
- Climate Change: the Science, Impacts and Solutions
- Conflict, Reconciliation and Peace
- International Health Agencies and Development
- Governance, Democratisation and the State
- Tropical Landscapes and Livelihoods

## MASTER OF SCIENCE

This prestigious, interdisciplinary coursework degree enjoys worldwide recognition, and offers a comprehensive range of specialist disciplines which reflect the tropical location of JCU, by the Great Barrier Reef and the Wet Tropics rainforest. Majors include

- Aquaculture
- Environmental Earth Sciences
- Environmental Marine Science
- Geology
- Marine Biology
- Natural Resource Management
- Protected Area Management

- Tropical Agriculture
- Tropical Ecology and Conservation
- Tropical Marine Ecology and Fisheries Biology

Coursework programs are flexible, with electives available across the above majors. A research option is available by invitation for high achieving students following the first two semesters of study. A **Graduate Certificate** and **Graduate Diploma of Science** are also available.

### Aquaculture

JCU's teaching and research programs in this study area focus on tropical aquaculture of fish, shellfish and pearls. Research programs in nutrition and diet, reproduction, larval development and culture, growth regulation, and husbandry for fish, molluscs and crustaceans present a range of study options. Coursework programs provide training in the principles and techniques in this area as well as hands-on experience. The programs are also flexible with electives available from other science disciplines. Students devise a study program to meet their professional needs in consultation with the Course Coordinator. Research components may be included under special circumstances.

A selection of subjects for this major include

- Aquaculture: Principles and Practices
- Sustainable Aquaculture
- Aquaculture: Systems Design
- Aquaculture: hatchery techniques
- Fisheries Biology, Assessment and Management
- Aquatic Pathobiology

### Environmental Earth Sciences

This coursework program is designed for graduates from other disciplines who wish to seek skills and training in resource and environmental impact assessment, mine site rehabilitation as well as soil and water science.

A selection of subjects for this major include

- Applied Soil Science
- Earth and Environmental Geochemistry
- From Icehouse to Greenhouse
- Field Studies in Tropical Water and Soil Science
- Disturbed Site Repair

### Environmental Marine Science

JCU's School of Engineering and Physical Sciences offers coursework programs in environmental marine science including oceanography and meteorology. The suite of coursework programs enables science graduates to develop their knowledge and skills in the areas of physical oceanography and meteorology, utilising the unique marine and tropical environments of northern Queensland.

A selection of subjects for this major include

- Physical Oceanography
- Meteorology
- Radar Techniques
- Geophysical Fluid Dynamics
- Research Project

### Geology

JCU's School of Earth and Environmental Sciences offers courses in General Geology and Economic Geology. Through strong collaborative links with government agencies, mining companies and research facilities strategically located in the northern Queensland region, the School creates unique learning and training opportunities in the geological sciences for postgraduate students, and ensures an applied focus.

A selection of subjects for this major include

- Earth Dynamics
- Earth and Environmental Geochemistry
- Deformation, Metamorphism and Hydrothermal Fluids
- Advanced Geological Mapping
- Ore Genesis

### Marine Biology

JCU enjoys national and international recognition for its teaching and research in marine biology. The School of Marine and Tropical Biology offers a suite of courses with an emphasis

on tropical marine ecology and fisheries biology. These courses enable graduates to develop their knowledge and skills in quantitative marine ecology, conservation biology and the biology, life history and taxonomy of tropical marine organisms. Coursework programs are flexible, with a range of electives available. Students devise a study program to meet their professional goals, in consultation with the course coordinator. Research components may be included in the Master of Science, if approved.

A selection of subjects for this major include

- Marine Conservation Biology
- Scientific Diving and Diving Physiology
- Evolution and Ecology of Reef Fishes
- Coastal and Estuarine Ecosystems
- Fisheries Biology, Assessment and Management
- Invertebrate Biology
- Behaviour of Marine Animals

### Natural Resource Management

The School of Earth and Environmental Sciences has an established reputation for research in tropical environments and natural resource management. This course provides professional development for students wishing to obtain expertise in managing interactions between humans and their environment.

A selection of subjects for this major include

- Environmental and Regional Planning
- Environmental Impact Assessment
- Terrestrial Resource Management Managing
- Rainforest Wildlife
- Managing Coastal and Marine Environments
- Conserving Marine Wildlife: Sea Mammals, Birds, Reptiles
- Conserving Tropical Rainforests

### Protected Area Management

There are over 120,000 protected areas worldwide and their success depends on how well they are managed. The School of Earth



and Environmental Sciences has an established reputation for research in tropical environments and protected area management. This program provides specialist training for science graduates already working in this area (national parks and world heritage listed areas) or people wanting to work in this field. Flexible programs are offered in which students devise their coursework component in consultation with the course coordinator to match their professional goals and interests. The programs can be structured to include a research component.

A selection of subjects for this major include

- Principles and Practices of Protected Area Management
- Management of Marine Protected Areas
- Terrestrial Resource Management
- Environmental Impact Assessment
- Conserving Tropical Rainforests
- Ecotourism and Wildlife Tourism Management

#### Tropical Agriculture

Tropical Australia presents unique agricultural opportunities that require special attention. The climate suits a wide range of agriculturally significant crops, pastures and animal production systems that differ from those in more traditional temperate climates. JCU's tropical agricultural science coursework programs equip our graduates with practical knowledge and skills to advance their careers in this field. Students may devise a study program in consultation with the course coordinator to match their professional goals and interests.

A selection of subjects for this major include

- Ecology and Conservation
- Ecological and Conservation Genetics
- Plants and People
- Plant Diversity and Adaptations
- Climate Change and Plant Survival

#### Tropical Ecology and Conservation

All aspects of theoretical and applied ecology are considered in these courses, making full use of the wide variety of natural tropical environments surrounding JCU including savannas, rainforests, wetlands and coastal marine habitats. These tropical ecology programs offer a wide range of electives. Students can structure their courses to specialise in the ecology of rainforests, savanna, tropical freshwater systems, tropical wildlife, or tropical insects. Study programs can be tailored to a student's interests and professional goals and can include a research component.

A selection of subjects for this major include

- Wildlife Ecology and Management
- Marine Conservation Biology
- Sampling and Experimental Design
- Adaptation to Environmental Change
- Conservation Biology

#### Tropical Marine Ecology and Fisheries Biology

JCU's programs in tropical marine ecology and fisheries biology are dedicated to the study of tropical, shallow water marine systems. There is an emphasis on whole-organism biology, the ecology and biogeography of tropical marine organisms, and the evolutionary mechanisms that underlie their diversity. Proximity to the Great Barrier Reef provides unparalleled opportunities for investigating ecological and evolutionary

questions for reef fish, corals, and other marine organisms. Students will develop their knowledge and skills in quantitative marine ecology, conservation biology and the biology, life history and taxonomy of tropical marine organisms. The courses are flexible with a range of electives available. Students devise a study program to meet their professional goals, in consultation with the course coordinator. Research components may be included in the Master of Science, if approved.

A selection of subjects for this major include

- Fisheries Science
- Scientific Diving and Diving Physiology
- Marine Evolution and Biogeography
- Coastal and Estuarine Ecosystems
- Fisheries Biology, Assessment and Management

#### MASTER OF TROPICAL URBAN AND REGIONAL PLANNING

JCU's tropical urban and regional planning programs are designed for planners in urban, shire and regional settings. They also provide scope for allied professionals to widen their knowledge in the field of planning. Emphasis is placed on the interactions of humans and the environment, and the particular characteristics of settlements and issues in remote and tropical environments. The courses have been designed in consultation with the Planning Institute of Australia, Australian Institute of Landscape Architects, Australian Institute of Architects, and state and commonwealth departments and organisations. The Master of Tropical Urban Regional and Regional Planning is professionally accredited by the Planning Institute of Australia.

A selection of subjects for this major include

- Social Impact Assessment: Environmental Management
- Professional placement
- Urban Design Studio
- Geographic Information Systems (GIS)
- Environmental and Regional Planning
- Urban Geography and Design
- Planning Legislation and Professional Practice

#### GRADUATE DIPLOMA and GRADUATE CERTIFICATE OF BIOTECHNOLOGY

These interdisciplinary programs accommodate the rapid advances made in genetic engineering, cell culture, molecular biology and agriculture, and prepare science graduates for an increasing variety of new applications for biological products and ever-increasing job opportunities in the field. The program provides theoretical scientific knowledge and an understanding of the issues required for modern biotechnology including subjects in management, marketing and entrepreneurship.

The Graduate Certificate of Biotechnology and the Graduate Diploma of Biotechnology are designed to allow science graduates to undertake specialist study in the knowledge, understanding, issues and application of biological products in modern biotechnology. Programs are flexible, with subjects available from a range of science disciplines, and electives that introduce management, marketing and entrepreneurship. A course of study will be developed in consultation with an academic course advisor.



**NEED MORE INFO?**

Visit the Courses and Degrees website  
[www.jcu.edu.au/courses](http://www.jcu.edu.au/courses)

# Postgraduate Research Study Options

The following section gives a brief overview of the higher research degrees available at JCU. Research degrees are listed alphabetically by field of study.

For more detail on areas of research strength, academic profile and more, please visit the individual web sites listed here. A list of potential research topics is also available at [www.jcu.edu.au/grs/topics](http://www.jcu.edu.au/grs/topics). All research enquiries should be emailed to [researchstudenthelp@jcu.edu.au](mailto:researchstudenthelp@jcu.edu.au) and copied to [iscadmissions@jcu.edu.au](mailto:iscadmissions@jcu.edu.au) to ensure contact is made with the appropriate person. Information is given later in this publication on how to apply for research degrees (page 62) and on JCU's academic and English language entry requirements (page 54).

**Please note:** All research degrees fall under the English Band 2 requirement.

## AQUACULTURE

### Master of Philosophy (Science) Doctor of Philosophy

The key focus in this discipline is on tropical aquaculture – drawing on JCU's proximity to the most productive aquaculture regions in Australia and the Asia-Pacific (the region has marine shrimps/prawns, freshwater crayfish, pearl oysters, barramundi and aquarium fish farms). Diverse research topics available include nutrition and diet development, reproduction, larval culture and growth regulation, and husbandry for fish, molluscs and crustaceans.

Extensive close links with bodies such as the Australian Institute of Marine Science, the Great Barrier Reef Marine Park Authority, the Commonwealth Scientific and Industrial Research Organisation (CSIRO), and Queensland Department of Primary Industries give students unparalleled opportunities for collaborative research in specialised areas, such as: aquatic animal diseases; pond dynamics; and genetics and molecular biology.

State of the art facilities include: an aquaculture and aquarium facility with controlled environment rooms, live culture facilities and a microalgal laboratory; Orpheus Island Research Station with a seawater system, large-scale culture facilities (incl. tanks and longlines), wet and dry laboratories and microalgal production facilities; molecular and histology facilities; laboratories equipped with a range of analytical equipment; and scanning electron and confocal laser scanning microscopes.

Current research interests include aquaculture genetics, cultivation of tropical molluscs (particularly pearl oysters), crustaceans and

marine ornamentals and nutritional, reproductive and stress physiology in fish.

[www.jcu.edu.au/mtb](http://www.jcu.edu.au/mtb)

## BOTANY AND TROPICAL PLANT SCIENCES

### Master of Philosophy (Science) Doctor of Philosophy

Research areas take full advantage of JCU's location close to savanna, rainforest and marine environments, as well as the close linkages with several national Cooperative Research Centres (CRCs) and numerous other research organisations such as the Australian Tropical Sciences and Innovation Precinct (Townsville), Australian Tropical Herbarium (Cairns), National Climate Change Adaptation Research Facility, CSIRO, Department of the Environment, Burdekin Agricultural College and the Australian Institute of Marine Science. The Cairns campus is also home to the new Australian Tropical Forest Institute. Research areas include

- Botany
- Conservation biology
- Ecology
- Evolutionary biology
- Habitat, distribution and the phytogeographical affinities of mosses in the Wet Tropics bioregion
- Marine and freshwater biology
- Physiology
- Sustainable agro ecosystems
- Zoology

Some of the extensive facilities include: histology and microscopy laboratories; molecular ecology and evolution facility; Advanced Analytical Centre with elemental spectrometry, electron and confocal microscopy, x-ray diffraction and fluorescence and genetic analysis; herbarium; North Queensland Algal Identification/Culturing Facility;

water chemistry laboratory; tropical vegetation dynamics laboratory; growth facilities: OzFACE (Free Air CO<sub>2</sub> Enrichment)– Australian Savanna Global Change facility; controlled temperature rooms and environment facility; glasshouses, shadehouses and agroforestry plot; aquarium complex up to 150,000 litre system; research stations in the rainforest, rainforest-sclerophyll ecotone and savanna/arid zone; the Australian Canopy Crane research facility; and Orpheus Island research station.

[www.jcu.edu.au/mtb](http://www.jcu.edu.au/mtb)

## CHEMISTRY

### Master of Philosophy (Science) Doctor of Philosophy

A range of chemical disciplines is available, including environmental chemistry, industrial chemistry and marine chemistry. Instrumentation and research facilities include: NMR – Varian-Mercury 300 MHz (tuneable probe, variable temperature) instrument and access to Varian INOVA 500 MHz instrument through JCU-University of Melbourne High-Field NMR facility; electronic spectroscopy – CARY 5e IV-visible-NIR spectrophotometer; JASCO J715 CD spectropolarimeter, Perkin-Elmer LSSOB spectrofluorimeter; atomic absorption spectrometers; infra-red – NICOLET Nexus FTIR spectrometer; electrochemistry laboratory; gas chromatography and HPLC facilities; ESR – JEOL JES-TE200 ESR spectrometer; carbon/hydrogen/nitrogen/sulphur microanalysis facility; inert atmosphere facility; and access to additional instrumentation through the University's Advanced Analytical Centre and Australian Institute of Marine Science.

[www.jcu.edu.au/phms](http://www.jcu.edu.au/phms)

## EARTH SCIENCES

### Master of Philosophy (Science) Doctor of Philosophy

JCU's School of Earth and Environmental Science is recognised as a national leader in the field and has a strong research profile, attracting significant funding from the Australian Research Council and Cooperative Research Centres. Teaching scholarships are offered to research students of high calibre. More than 60 postgraduate research students are active in areas including the geology of natural resources, tectonics, structural and metamorphic geology and sedimentary geology inclusive of reef studies. JCU is host to the Economic Geology Research Unit, which is strongly supported by the mining and exploration industry and focuses research on natural resources. In addition to outstanding geochemical facilities and excellent petrographic geocomputing infrastructure, the School also operates its own research vessel.

[www.jcu.edu.au/ees](http://www.jcu.edu.au/ees)

## ECOLOGY

### Master of Philosophy (Science) Doctor of Philosophy

JCU has an outstanding track record in securing competitive funding for research in this field. The focus is on whole organism biology and ecology, behaviour conservation, evolutionary biology and ecophysiology, and allied disciplines. Researchers can naturally take advantage of the diverse surrounding environments ranging from reef to rainforest, wetland to savanna, and island to mountain top. The excellent research facilities for

ecological, plant and zoological studies in tropical environments include: molecular ecology and evolution facility; histology and microscopy laboratories; Advanced Analytical Centre (elemental spectrometry, electron and confocal microscopy, x-ray diffraction and fluorescence, and genetic analysis); herbarium; tropical vegetation dynamics laboratory; growth facilities: OzFACE (Free Air CO<sub>2</sub> Enrichment) – Australian Savanna Global Change facility; controlled temperature rooms and environment facility; glasshouses, shadehouses and agroforestry plot; research stations in the rainforest, rainforest/sclerophyll ecotone and savanna/arid zone; the Australian Canopy Crane research facility; and Orpheus Island research station. JCU's School of Marine and Tropical Biology also enjoys close collaborative links with the national Cooperative Research Centres for Tropical Savannas Management.

[www.jcu.edu.au/mtb](http://www.jcu.edu.au/mtb)

## ENGINEERING

### Master of Philosophy (Engineering) Doctor of Philosophy

#### Chemical Engineering

Locally relevant topics, such as the sugar and minerals industries, are the main focus; ranging from heat transfer and rheology, to process control and particulate processes. Strong collaborative links exist with Queensland Nickel (QN); Incitec Pivot; Xstrata Technology, Sun Metals and Ergon Energy. Facilities include a high-performance computing facility and specialised software, as well as a pilot plant for extraction studies; rheological property characterisation tools for non-Newtonian fluids; liquid-liquid dispersion facilities; fluidised bed apparatus; biomaterials and engineering materials characterization facilities; industrial

evaporator apparatus, and a specialised particle production facility.

[www.jcu.edu.au/eps](http://www.jcu.edu.au/eps)

#### Civil and Environmental Engineering

The emphasis is on issues relevant to the tropical environment including wind engineering directed at the effects of high wind on structures, performance of concrete structures, structural reliability, structural health monitoring, uncertainty quantification in structural engineering, water resources management, detection monitoring and remediation of contamination in the surface and subsurface environment, especially in tropical areas, energy efficient wastewater treatment systems, environmental fluid mechanics, geotechnical investigation of mine stability and land reclamation and dredging. Students have the benefits of excellent research laboratories in the areas of: wind engineering, concrete, geomechanics, fluid mechanics, hydraulics, materials testing and structural laboratories, and an analytical environmental laboratory.

[www.jcu.edu.au/eps](http://www.jcu.edu.au/eps)

#### Electrical and Computer Systems Engineering

The research areas of these disciplines are focused on JCU's theme of tropical innovation and sustainability. Major topics include distributed renewable energy generation technologies, smart grid and power systems modeling, sustainable power generation, fabrication of polymer thin films for flexible electronics, organic solar cells, non-destructive material characterization using electromagnetic waves, biomaterials for implantable devices, design and fabrication of filters and RF circuits for communications devices,

microwave properties and characterization of novel materials, modeling and control of rotary wing UAV's, embedded wireless systems for medical instrumentation, electric vehicles for load shifting.

#### Mechanical Engineering

Links with local industry play a major role, placing the focus on issues relevant to the tropics such as the natural resource and sugar industries. In sugar, a number of areas from harvesting and transport, through processing, to by-products have been targeted from a research perspective. Research in the emerging technologies in mining, mineral processing, oil and gas recovery, sustainable and renewable energy, and biomaterials are key focuses of the academic staff in Mechanical Engineering.

The staff have also conduct research in machine design and virtual prototyping; refrigeration and air conditioning; energy and powered production; fracture mechanics; computational solid and fluid mechanics; application of finite element procedures to industrial problems; bone, dental and cartilage materials, biofuel engine technology, and thermal-hydraulics. The academics have successful track records in attracting competitive research funding, and also boast strong collaborative relationships with key international and national universities, including the University of Wales, UK; Massachusetts Institute of Technology, USA; Royal Institute of Technology, Sweden; Purdue University, USA, The University of Sydney; The University of New South Wales; Australian National University; Queensland University of Technology. Top class facilities include an experimental sugar cane-crushing facility – one of the most advanced in the world for the testing of

computational crushing models; structural testing facilities for calibration of constitutive models; materials laboratory; dynamics laboratory; thermodynamics and heat and mass transfer laboratory; and an advanced computational mechanics laboratory and a cutting-edge high-frame-rate PIV system with two high-speed cameras.

## ENTOMOLOGY

### Master of Philosophy (Science) Doctor of Philosophy

Postgraduate programs in entomology are coordinated by JCU's School of Marine and Tropical Biology in Cairns. The study of entomology at JCU emphasises tropical systems generally and encompasses both pure (eg. insect biodiversity) and applied (eg. control of insect pests) aspects of entomology in Australia. Current research includes

- Dragonfly, spider, and pseudoscorpion predatory and defence behaviour
- Behavioural ecology of social insects
- Insect-plant and bird-plant interactions
- Structure and distribution of butterfly communities

[www.jcu.edu.au/school/sphtm/antonbreinl/centers/vccrc/ento.html](http://www.jcu.edu.au/school/sphtm/antonbreinl/centers/vccrc/ento.html)

## ENVIRONMENTAL SCIENCE

### Master of Philosophy (Science) Doctor of Philosophy

The School of Earth and Environmental Sciences has an established reputation for its research in tropical environments and resource management, and research focuses on finding creative and dynamic solutions to environmental problems. Students



have ready access to a diverse range of natural environments, including the World Heritage-listed Great Barrier Reef and Wet Tropics rainforests, the nationally significant coastal wetlands, mangroves and estuaries, and the vast woodland savannas of the arid outback. Examples of research areas include

- Conservation of marine wildlife, especially marine mammals and turtles
- Indigenous resource management
- Urban design, urban energy use
- Hazard planning
- Residential and community development
- Managing and monitoring impacts of rainforest access
- Effects of fishing on the environment

In addition to strong collaborative links with government agencies, research opportunities are enhanced by access to the Australian government's Marine and Tropical Science Research Facility, which is based at JCU, and the Cooperative Research Centre for Tropical Savannas Management.

[www.jcu.edu.au/ees](http://www.jcu.edu.au/ees)

## GEOGRAPHY

### Master of Philosophy (Science) Doctor of Philosophy

#### Human Geography

Research in this area takes a broad approach to human activities in urban and rural settings, and human interactions with natural and built environments: how human societies function and how they influence the nature of places, including use of resources, environmental impacts, and linkages between regions. Research draws on the cross-disciplinary nature of the School of Earth and Environmental Sciences, bringing together physical, biological and social aspects of the environment. Researchers also benefit from the close links with Cooperative Research Centres for the Great Barrier Reef World Heritage Area, Tropical Rainforest Ecology and Management, and Tropical Savannas Management, as well as bodies such as Emergency Management Australia, Bureau of Meteorology, Australian Bureau of Statistics, the Department of Transport, and local City Councils.

[www.jcu.edu.au/ees](http://www.jcu.edu.au/ees)

#### Physical Geography

Research in this field deals with the materials and processes (physical, biological and chemical) which compose, shape and influence landscapes and environments, how environments and landscapes function and how they may change over time (including the ongoing effects of human activities). JCU is particularly strong in geomorphology, paleoecology and climatology. JCU's strategic tropical location allows access to a diverse range of natural environments, including the Great Barrier Reef, Wet Tropics rainforests, and savanna landscapes, and allows collaboration with the Australian Institute of Marine Science, Great Barrier Reef Marine Park Authority, Wet Tropics Management Authority, CSIRO Davies and Atherton laboratories, and the national Cooperative Research Centres for Tropical Savannas Management, among others.

[www.jcu.edu.au/ees](http://www.jcu.edu.au/ees)

## GEOGRAPHIC AND LAND INFORMATION SYSTEMS

### Master of Philosophy (Science) Doctor of Philosophy

Facilities for research in geographical information systems are outstanding, including three GIS laboratories in Townsville and two in Cairns, which have adopted the ArcGIS suite of software with Erdas Imagine as their principal image processing software, as well as MapInfo and Idrisi. A newly established research facility in Cairns runs ArcGIS and ErMapper, and JCU also offers online access to a new High Performance Computing facility running photogrammetric software. The Australian Research Council and infrastructure grants have funded JCU's Wet Tropics Spatial Database which gives access to Landsat ETM + imagery, DEMs (terrestrial and marine), Topo 250K data and other regional spatial databases from a variety of sources. Current research projects include Aboriginal community GIS in Cape York, fire ecology and Indigenous knowledge systems, limestone landscape classification and terrain modelling, rock wallaby terrain suitability assessment, rainforest dieback monitoring, and cyclone damage to coral reef ecosystems.

[www.jcu.edu.au/ees](http://www.jcu.edu.au/ees)

## MARINE BIOLOGY

### Master of Philosophy (Science) Doctor of Philosophy

JCU enjoys an international reputation for excellence for its teaching and research in marine biology. The focus is on the study of tropical shallow water marine systems, with an emphasis on whole-organism biology, the ecology and biogeography of tropical marine organisms, and the evolutionary mechanisms that underlie their diversity. The proximity to the Great Barrier Reef provides unparalleled opportunities to investigate ecological and evolutionary questions for reef fish, corals and other invertebrates. The School of Marine and Tropical Biology at JCU has an active research program involving approximately 100 research students working in areas relating to the biology, ecology or evolution of tropical marine organisms associated with coral reefs, mangroves, or sandy and rocky shores. The outstanding facilities include: Orpheus Island Research Station; the Marine and Aquaculture Research Facility; numerous research vessels; molecular facility; histology facility; and scanning electron, transmission electron, and confocal laser scanning microscopes. Strong links exist with leading research and management institutions, including: the Australian Institute of Marine Science; Marine and Tropical Research Facility; Museum of Tropical Queensland; Tropical Marine network, and the Great Barrier Reef Marine Park Authority. Key research areas include: tropical fisheries biology; coral biology and coral reef ecology; population and community modelling; sampling and monitoring programs and marine conservation biology; tropical ichthyology; invertebrate biology; and mangrove, coastal and estuarine biology.

[www.jcu.edu.au/mtb](http://www.jcu.edu.au/mtb)

## MATHEMATICS AND STATISTICS

### Master of Philosophy (Science) Doctor of Philosophy

The main research area involves computational and applied mathematics, and the research directions can be broadly described as modelling and computation in areas including: ecology;

groundwater flow; fluid dynamics; and oceanography. An emerging research area is that of mathematics education, in particular at secondary and tertiary levels, and the role of mathematics in undergraduate science curriculums. JCU's School of Engineering and Physical Sciences' research in statistics includes developing and testing data mining tools for uncovering hidden relationships in mega-sized data sets, particularly in the fields of bioinformatics, cheminformatics, climatology and remote sensing. Close research ties exist with the Australian Institute of Marine Sciences, CSIRO, University of Queensland, University of Southern Queensland and the University of Wollongong.

[www.jcu.edu.au/eps](http://www.jcu.edu.au/eps)

## PHYSICS

### Master of Philosophy (Science) Doctor of Philosophy

Research opportunities exist in the areas of theoretical atomic and molecular physics, matter-antimatter interactions, and physical oceanography and meteorology, utilising the unique marine and tropical environments of northern Queensland. Students benefit from close collaborative links with the Australian Institute of Marine Sciences, CSIRO, Great Barrier Reef Marine Park Authority, Defence Science and Technology Organisation, University of Sydney, Flinders University, and the Australian National University. International collaboration partners include: the National Institute of Standards and Technology, Gaithersburg, USA; University College London, UK; Keio University, Japan; University of Miami, USA; and the University of Liverpool, UK.

[www.jcu.edu.au/eps](http://www.jcu.edu.au/eps)

## TROPICAL AGRICULTURAL SCIENCE

### Master of Philosophy (Science) Doctor of Philosophy

Thanks to its strategic location in tropical Australia, JCU researchers in this area focus on the unique conditions: warmer climate and high rainfall which are suited to a wide range of agriculturally significant crops and pastures, which differ from those of more temperate climates. The University has forged strategic links with

several national Cooperative Research Centres (CRCs) and numerous other organisations including: CSIRO, Department of the Environment, Burdekin Agricultural College, and the Australian Institute of Marine Science. In Cairns, JCU is home to a state of the art facility to house the new Australian Tropical Forest Institute. Current research interests include

- Physiological effects of water-logging on sugarcane varieties
- Invasion potential of *Eumetopina flavipes*, vector of ramu stunt disease of sugarcane
- Improving productivity and sustainability of sugar production
- Genetics and plant breeding

[www.jcu.edu.au/mtb](http://www.jcu.edu.au/mtb)

## TROPICAL MARINE ECOLOGY AND FISHERIES BIOLOGY

### Master of Philosophy (Science) Doctor of Philosophy

Teaching and research programs at JCU in tropical marine ecology and fisheries biology are dedicated to the study of tropical shallow water marine systems. There is an emphasis on whole organism biology, the ecology and biogeography of tropical marine organisms, and the evolutionary mechanisms that underlie their diversity. Proximity to the Great Barrier Reef provides unparalleled opportunities for investigating ecological and

evolutionary questions for reef fish, corals, and other invertebrates. Research programs in coral reef biology, ecology and biodiversity, tropical fisheries biology, marine conservation biology, coastal and estuarine biology, and invertebrate biology provide a diversity of research opportunities for postgraduate students in this field.

[www.jcu.edu.au/mtb](http://www.jcu.edu.au/mtb)

## TROPICAL URBAN AND REGIONAL PLANNING

### Master of Philosophy (Science) Doctor of Philosophy

Research emphasis within tropical urban and regional planning is placed on the interactions of humans and the environment, and the particular characteristics of settlements and issues in remote and tropical environments. Students benefit from JCU's strong collaborative links with government agencies such as Emergency Management Australia, Bureau of Meteorology, Australian Bureau of Statistics, the Department of Transport, local councils and JCU's School of Indigenous Australian Studies. Current research interests include

- Population analysis
- Development in South East Asia and the Pacific
- Regional Planning
- Community planning
- Hazard awareness and preparedness
- Climate change adaptation

- Community resilience and adaptation
- Planning for tourism and hazard mitigation

[www.jcu.edu.au/ees](http://www.jcu.edu.au/ees)

## WILDLIFE BIOLOGY AND MANAGEMENT

### Master of Philosophy (Science) Doctor of Philosophy

The need to protect our unique fauna is increasingly evident now as we become more aware of declining species numbers. Governments respond by expanding national park tenure and providing protective legislations. Business also plays a role with both private and publicly listed companies developing conservation parks and predator exclusion zones. JCU recognises the need for trained wildlife biologists and managers to complement these initiatives by providing a range of postgraduate research and coursework programs in wildlife biology and management. These programs specialise in tropical systems generally and also consider the development and practice of wildlife biology and management in Australia. The wildlife of tropical Queensland is the most diverse in Australia. Many species, whether birds, mammals, reptiles or frogs, have until now received very little attention from professional biologists.

[www.jcu.edu.au/mtb](http://www.jcu.edu.au/mtb)

## ZOOLOGY

### Master of Philosophy (Science) Doctor of Philosophy

JCU is home to the largest zoology department in Australia, and offers a unique environment for researching zoology or ecology thanks to the fact that the department studies the biology of whole animals, which is not common, as well as having a strong evolutionary emphasis. The zoology department also enjoys a strong association with the departments of Marine Biology and Tropical Plant Sciences. JCU's location in the tropics gives unparalleled access to enormous diversity of tropical animals and eco-systems in an area where natural features are strongly protected, including the World Heritage listed Great Barrier Reef and Wet Tropics Rainforest region. Research conducted by staff and postgraduate students encompasses a broad spectrum of projects on tropical animals inhabiting a variety of terrestrial, freshwater and marine environments. Research emphasis is on whole animals, for example, their ecology, evolutionary ecology, evolution, behaviour, physiological ecology, and studies of the ecosystems in which they are found. Study covers almost all terrestrial and freshwater animal groups, including many invertebrate and all vertebrate groups. Research is conducted in tropical rainforest, freshwater, savanna, marine and island habitats.

[www.jcu.edu.au/mtb](http://www.jcu.edu.au/mtb)



NEED  
MORE  
INFO?

Visit the Graduate Research School website  
[www.jcu.edu.au/grs](http://www.jcu.edu.au/grs)

# Distance and Flexible Learning Degrees

*JCU offers a select offering of distance and/or flexible degree options to meet the needs of students who would like to receive a quality Australian education experience but are not able to study in Australia.*



**Please note:** not all programs are available solely by distance education and may require some face to face teaching on campus. Please contact James Cook International for more information.

## DOCTOR OF ASTRONOMY and DOCTOR OF PHILOSOPHY

The Centre for Astronomy at JCU is an academic centre dedicated to research in astronomical sciences, and the teaching of astronomy using the Internet. The Doctor of Astronomy is a professional doctorate in astronomy, astrophysics and astronomy related areas that is delivered entirely online. This Doctorate is a combination of lecture material and research and while the program includes a coursework component, it is a research degree and is examined by thesis. The coursework component consists of the following subjects

- Modern Astrophysics
- Astronomy Instrumentation
- Doctoral Astronomy Literature Review
- Doctoral Pilot Research Project
- Doctor of Astronomy Research Thesis
- Astronomy Publication Preparation

## GRADUATE CERTIFICATE OF CAREER DEVELOPMENT

This program is designed for those who wish to work in the areas of career education, career guidance and career counselling. This course may be completed in conjunction with the Masters of Guidance and Counselling or separately.

## GRADUATE DIPLOMA OF CONFLICT AND DISPUTE RESOLUTION

In Western culture the adversarial system has been the principal method of dispute resolution. Alternative Dispute Resolution (ADR) is a recent discipline to provide participant driven resolution processes. The knowledge, skills and techniques of ADR have common application in most human contexts involving negotiation, mediation and communication. This qualification is open to graduates from any discipline.

## MASTER OF ASTRONOMY

JCU offers a suite of Astronomy degrees that are delivered totally online and meet the needs of amateur astronomers, middle professionals and teachers who have an interest in astronomy and its practice. The Master of Astronomy embraces astrophysics and astronomy history. A **Graduate Certificate** and **Graduate Diploma** are available in this discipline.

## MASTER OF CONFLICT AND DISPUTE RESOLUTION

The Master of Conflict and Dispute Resolution program is a dynamic, innovative and flexible program. It is designed to offer postgraduate students with a world-class learning experience, providing the knowledge and skills to analyse, manage and resolve conflict in a wide variety of contexts. All program staff are conflict resolution practitioners with extensive practical experience and a dynamic level of passion for the field. Conflict management skills are essential in any context

where people interact. This qualification is open to graduates from any discipline. The degree draws heavily on conflict analysis, negotiation and mediated dispute resolution as well as dealing with cross-cultural conflict resolution issues relevant to the tropics. The course is relevant for anyone who works with people, and particularly those with a management role, or those who wish to work as a mediator, conciliator or conflict support professional.

## MASTER OF EDUCATION

This program is available to graduates from both a teaching and non-teaching background who wish to further their professional development. Students may undertake a general program of subjects or major in Education for Sustainability. A **Postgraduate Certificate of Education** is also available. **Note:** This course does not lead to registration as a teacher in schools.

## MASTER OF GUIDANCE AND COUNSELLING

JCU's Master of Guidance and Counselling is designed for those wanting to pursue a career in counselling either in the education system or outside. Previously, this course has been completed predominately by teachers wishing to qualify as school guidance officers. The scope has now widened and people with experience in the human services sector are also encouraged to apply. The Master of Guidance and Counselling is accredited with the Australian Counsellors Association (ACA) and the Singapore Association for Counselling, making it possible for graduates to pursue a counselling career in the general community.

## MASTER OF NURSING STUDIES

This 18-month coursework program is designed for registered nurses who wish to extend their nursing skills and knowledge to an advanced level in order to be able to undertake leadership roles in contemporary issues affecting the health care system. This is a very flexible program that accommodates a comprehensive range of nursing disciplines.

## MASTER OF OCCUPATIONAL THERAPY

This course aims to provide grounding in specialist occupational therapy practice at an advanced level. The program can include an advanced, supervised placement in the occupational therapy field.

## MASTER OF PHARMACEUTICAL PUBLIC HEALTH

This course has been designed to enhance Pharmacists' qualifications in a competitive job market and satisfy the need for continued professional development programs. Pharmaceutical Public Health is a relatively new branch of pharmacy practice that aims to develop pharmacy services and expertise that enhances the health and wellbeing of a whole community. In particular Pharmaceutical Public Health services will be able to aid existing public health services in areas such as smoking cessation, heart disease, stroke and cancer prevention, reduction of under-18 conception rate, reducing obesity rates, control of chronic disease and reducing health inequalities. Completion of this course will not

allow the graduate to register in Australia as a Pharmacist.

### MASTER OF PUBLIC HEALTH AND TROPICAL MEDICINE

JCU's Master of Public Health and Tropical Medicine is unique in Australia, addressing both public health and tropical medicine issues. The broad range of electives gives the opportunity for specialised focus on tropical Australia, including Aboriginal and Torres Strait Islander health or on Australia's tropical neighbours. A **Postgraduate Certificate** and **Postgraduate Diploma of Public Health** are also available.

### MASTER OF REHABILITATION (PHYSIOTHERAPY)

This degree has been developed to meet the advanced skill requirements of practitioners in the rural, remote, Indigenous and tropical health workforce and includes clinical reasoning and evidence based physiotherapy management for rehabilitation following trauma and for chronic conditions. The main areas of physiotherapy practice included are orthopaedics, neurology and cardio-respiratory physiotherapy across the lifespan. Students will also have access to updates in pain management, burns, women's health and other specialty areas. A **Postgraduate Certificate** and **Postgraduate Diploma of Rehabilitation (Physiotherapy)** are also available.

### POSTGRADUATE CERTIFICATE OF AEROMEDICAL RETRIEVAL

This course is concerned primarily with the transport of patients via a properly managed aeromedical evacuation system. It provides students with an overview of the knowledge, skills and attitudes required for the successful management of aeromedical retrieval in the Australian and the global context. This course is designed particularly for doctors, nurses and paramedics involved in the emergency movement of patients by fixed-wing aircraft and helicopters.

### POSTGRADUATE DIPLOMA and POSTGRADUATE CERTIFICATE OF HEALTH PROMOTION

This course covers the core health promotion competency areas involved in the development, implementation and evaluation of health promotion activities and programs in order to influence the health of populations, communities, groups and individuals. They offer a particular focus on the challenges facing professionals working in tropical, rural, and remote environments.

### POSTGRADUATE CERTIFICATE OF INFECTION CONTROL

This course provides health professionals with the knowledge and skills to implement effective infection control procedures within hospitals and other health care settings, with particular

focus on rural and remote areas. Applicants must have an appropriate medical or nursing degree approved by the Faculty or other relevant health professional qualification.

### POSTGRADUATE CERTIFICATE OF MENTAL HEALTH PRACTICE

This program is designed for psychologists who have completed an Australian Psychological Society (APS) accredited four year sequence and are seeking specialised postgraduate training. Graduates will gain a broad understanding of the multiple aspects of normal and abnormal changes in cognition, personality, well-being and mental health that occur with aging in the later years of life.

### POSTGRADUATE CERTIFICATE OF NURSING SCIENCE – ADVANCED CLINICAL PRACTICE

This program gives registered nurses the opportunity to critically reflect upon their nursing practice and to gain and apply specific nursing knowledge and skills relevant to their practice area.

### POSTGRADUATE CERTIFICATE OF NURSING SCIENCE – CLINICAL TEACHING

This degree is designed for registered nurses seeking to develop their clinical teaching skills and focus on the theoretical and applied knowledge required to function as effective clinical teachers.

### POSTGRADUATE CERTIFICATE OF SOFT TISSUE INJURY

The Postgraduate Certificate in Soft Tissue Injury provides graduates with the knowledge and skills to undertake physical injury/disease management from a unique holistic occupational therapy perspective. Soft tissue injury is becoming a specialised field within occupational therapy and the demand for clinicians to up-skill is increasing. This is the only course of this type in Australia and it provides a detailed understanding of the impact upon human performance of changes in structures of muscle, tendons and ligaments following changes in pathology.

### POSTGRADUATE CERTIFICATE OF TRAVEL MEDICINE

This program is designed for students who are appropriately qualified in the fields of medicine or nursing and who seek academic and practical training in the disciplines of travel and tropical medicine. It is of particular interest to those providing travel health advice and is accredited as an approved qualification by the Faculty of Travel Medicine of the Australasian College of Tropical Medicine for their fellowship program.



NEED  
MORE  
INFO?

Visit the Graduate Research School website  
[www.jcu.edu.au/grs](http://www.jcu.edu.au/grs)

# Academic and English Entry Requirements

## Academic Entry Requirements

Program	Entry Requirements	Additional Notes
<b>Postgraduate Coursework</b>	Successful completion of study equivalent to an Australian undergraduate Bachelor degree	Some degrees do have additional requirements, including work experience or high academic achievement.
<b>Masters by Research</b>	<p>Successful completion of study equivalent to an Australian undergraduate Bachelor degree with first or second class Honours</p> <p>Successful completion of study equivalent to an Australian undergraduate Bachelor degree and successful completion of either a Postgraduate Diploma or Graduate Certificate of Research Methods (can be completed at JCU)</p>	<p>International students who have not completed an Australian Bachelors degree must have a Bachelors degree and a minimum of six months formal research training</p> <p>An international qualification considered equivalent to the JCU Postgraduate Diploma or Graduate Certificate of Research Methods will also be considered appropriate</p>
<b>Doctoral (PhD)</b>	<p>Successful completion of study equivalent to an Australian Masters degree with at least a 50% research component</p> <p>Successful completion of study equivalent to an Australian undergraduate degree with first or second class (Division A) Honours</p>	Any international qualification or publications considered equivalent to the programs listed will also be deemed appropriate

For details on specific entry requirements, please contact James Cook International, or visit [www.jcu.edu.au/courses](http://www.jcu.edu.au/courses) and search for the degree or course you are interested in.

## English Language Entry Requirements

Students whose native language is not English must generally demonstrate their proficiency by achieving a score in a test such as Academic IELTS, TOEFL or Pearson (PTE Academic) (see table below). Other English language tests may also be accepted as proof of English language proficiency. Students who have successfully completed two years of full-time study in which the language of instruction was English may satisfy the entry requirement.

**Please note: English Band requirements for individual courses can be found on the Courses and Fees table (see p.16).**

	Band 1	Band 2	Band 3a	Band 3b	Band 4
<b>IELTS</b>	6.0 (no component lower than 5.5)	6.5 (no component lower than 6.0)	7.0 (no component lower than 6.5)	7.0 (with 7.0 in three components and 6.5 in one component)	7.0 (no component lower than 7.0)
<b>TOEFL (paper-based)</b>	550 (with a minimum Test of Written English score of 4.0)	570 (with a minimum Test of Written English score of 4.5)	577 (with a minimum Test of Written English score of 5.5)	577 (with a minimum Test of Written English score of 5.5)	577 (with a minimum Test of Written English score of 5.5)
<b>TOEFL (internet-based)</b>	79 (minimum writing score of 19)	90 (minimum writing score of 21)	100 (minimum writing score of 23)	100 (minimum writing score of 23)	100 (minimum writing score of 23)
<b>Pearson (PTE Academic)</b>	57	64	72	72	72

If you meet the academic requirements but not the English language entry requirement, you may be given a packaged Offer. This combines studying English at the JCU Pathway College or other approved provider, plus your offer of placement in a JCU academic program. This will allow you to get a student visa for the total length of your studies in Australia. For more information, please contact International Admissions by emailing [iscadmissions@jcu.edu.au](mailto:iscadmissions@jcu.edu.au).

Please note that the Department of Immigration and Citizenship (DIAC) also has certain rules relating to student visas which, depending on the visa assessment level of your country of citizenship, may require you to sit an English test even though you meet other English language requirements set by JCU.

### Packaged offers

Packaged Offers can also be issued for students requiring further research training before entering a Master of Research or PhD at JCU (such as the Postgraduate Diploma of Research Methods) or for students completing the PQP program above and are continuing on to study a business postgraduate coursework degree. Students who do not meet JCU's direct entry English language requirements will be issued with a Packaged Offer for Academic English studies plus their chosen degree. The James Cook International team will be able to advise you on the appropriate pathway to achieve your goals at JCU.



# JCU Pathway College

*The JCU Pathway College is your clear and direct pathway into study at JCU. The College offers a flexible path to university study – with committed teaching staff available to support you at every stage of your journey.*



The JCU Pathway College is your clear and direct pathway into study at JCU. The College represents a dynamic partnership between James Cook University and two Institutes of TAFE: the Tropical North Queensland Institute of TAFE (TNQIT) in Cairns and the Barrier Reef Institute of TAFE (BRIT) in Townsville.

The College currently offers a variety of English Language study programs in Townsville and Cairns, allowing you to further your English language while in Australia before starting the JCU degree of your choice.

The Pathway College currently operates from the JCU Cairns campus, the Cairns campus of TNQIT, and the Townsville campus of BRIT.

## English Language Programs

The JCU Pathway College offers English language programs designed to help you qualify for tertiary study, successfully sit an English language exam, or improve your English communication skills. If you meet the academic entry requirements for a degree but not the English Language entry requirements, JCU can issue you with a 'packaged offer' consisting of a period of Academic English language studies through the JCU Pathway College, plus an offer into the JCU degree program. This 'package' will allow you to receive a student visa for the entire duration of your studies. The length of the English study period will depend on your English language level at the time of application (as determined by an IELTS score or equivalent) and the English requirement for your chosen course.

## English for Academic Purposes

English for Academic Purposes is taught through our Direct Entry English Program (DEEP), which will equip you with the English language skills required to study at a tertiary institution in Australia. Classes focus on academic requirements and expectations, and learning strategies needed at a tertiary level. Once you have successfully completed the Direct Entry English Program, you will be eligible to enter a range of certificate and diploma courses at the JCU Pathway College, Tropical North Queensland Institute of TAFE and the Barrier Reef Institute of TAFE, as well as specific undergraduate and postgraduate courses at James Cook University.

## General English (GE) Program

General English Intensive courses are also available. Courses are designed to develop your confidence in using English for general purposes. You will improve your skills in speaking, listening, reading and writing, as well as grammar, vocabulary and pronunciation so you can communicate more effectively in English. If desired you can develop your skills in English to a point where you can progress to the Direct Entry English Program (DEEP 1). Courses options range from elementary to advanced levels. For more details on the JCU Pathway College programs visit

[www.jcupathwaycollege.com.au](http://www.jcupathwaycollege.com.au)

# Student Services



*JCU provides a full range of support services for students to help make the most of their time at university. Whether you need help with an assignment, finding accommodation, or just need someone to talk to, there are dedicated services on campus to assist you.*

## James Cook International

The James Cook International office assists every international student at JCU to ensure his or her stay in Australia and at the University is a pleasant and productive one. The international office should be your first point of contact if you need assistance. It provides a range of support services and information for students including

- preparing for arrival information
- free arrival reception service
- temporary accommodation bookings
- orientation program
- social activities
- accommodation information
- off campus accommodation tours
- orientation tours of Townsville or Cairns cities
- assistance in emergencies
- personal well-being and welfare support
- after hours student assistance helpline
- Overseas Student Health Cover (OSHC) information
- student advice, advocacy and referral
- course admission procedures
- returning home program

[www.jcu.edu.au/international](http://www.jcu.edu.au/international)

## Learning Skills

Learning advisers provide academic support for all JCU students. Workshops, online tutorials and individual sessions are available to help with: assignment writing, lecture note taking, organisational skills, exam preparation, research skills and

support for students from non- English speaking backgrounds.

[www.jcu.edu.au/learningskills](http://www.jcu.edu.au/learningskills)

## Multi-faith centre

This centre caters for students from a diverse range of religious backgrounds and is available at the Cairns and Townsville campuses. It provides pastoral care, spiritual and religious support for students. The International office can also provide advice to students on local places of worship.

[www.jcu.edu.au/chaplaincy](http://www.jcu.edu.au/chaplaincy)

## Counselling

A confidential, free counselling service is provided for students at the Townsville and Cairns campuses by qualified psychologists for a wide range of academic and personal needs.

[www.jcu.edu.au/student/counselling](http://www.jcu.edu.au/student/counselling)

## JCU Student Association

The JCU Student Association is directed by elected students and, for a membership fee, provides services and amenities to students. These include: student representation to the University, student welfare issues, entertainment, sports facilities and food outlets on the Cairns and Townsville campuses.

[www.jcu.edu.au/studentassoc](http://www.jcu.edu.au/studentassoc)

## Careers and Employment Service

The JCU Careers and Employment Service provides information and advice on careers,



employment and further study to current JCU students and graduates. Free services include

- online job finder, including part-time and vacation jobs
- career advice
- on-campus career fairs
- access to computer-based career guidance programs to help with career choices

[www.jcu.edu.au/careers](http://www.jcu.edu.au/careers)

### Retail services

The Townsville campus has a selection of cafés and student eateries. The Cairns campus has a Refectory (student eatery) and café at the library. JCU Bookshops on the Townsville and Cairns campuses offer student discounts on books and stationery. The Townsville and Cairns campuses have ATMs and agencies for the Uni Credit Union. In Townsville there is a post office and a hairdresser. For Cairns students, a post office, branches of all the major banks plus a range of other shopping facilities

are located at the Smithfield Centre, about one kilometre (half a mile) from the campus.

### Students with disabilities

Specialist services are available to students with permanent or temporary disabilities who may require additional information, support or resources. These include a range of technologies, to assist students to access teaching and assessment alternatives, and special arrangements for note taking and examinations. If you need these services, you should contact Accessibility Services as soon as you accept your offer, to discuss your needs.

[www.jcu.edu.au/office/disability](http://www.jcu.edu.au/office/disability)

### Leading technology

As a student at JCU you will enjoy access to the latest technology and a wealth of electronic resources. You'll have your own e-mail account and be able to access the JCU network to search and borrow books

from the JCU Library catalogue, submit assignments, contact your lecturers, take part in online class discussions and more. LearnJCU is a web resource for all JCU subjects, providing study resources, reading lists, notice boards, your own web page and discussion forums. eStudent presents enrolment details, lecture timetables, on-campus activities and more.

PC and Macintosh laboratories are available on all campuses. Selected computer laboratories are open 24 hours, seven days a week, offering printing facilities on a user-pays basis. Wireless zones let you access the web from your laptop computer at selected sites on campus.

### Library

The JCU Library is one of the best in regional Australia, with the campuses of Townsville and Cairns owning a combined collection of almost half a million volumes. Books can be ordered online and delivered between

campuses. Over 24,000 unique electronic journals are accessible as part of a rapidly expanding collection of electronic resources. Librarians provide in-depth assistance to students.

[www.jcu.edu.au/libcomp](http://www.jcu.edu.au/libcomp)

### JCU Professional College


To complement the skills and knowledge students gain through their studies, the JCU Professional College extends opportunities to students for professional and personal development.

The college's programs focus on building leadership capabilities, professionalism, productive networks and cross-cultural skills to give JCU graduates a career-building edge. All JCU students are members of the Professional College with access to a range of programs in three modules: Leadership, Community Engagement and Cultural Competency.

[www.jcu.edu.au/procollege](http://www.jcu.edu.au/procollege)



**DID YOU KNOW**



JCU's Townsville and Cairns campuses offer a special after-hours (nights and weekends) telephone hotline for international students. Students can access the number free of charge from an Australian landline phone by calling **1800 754 185**.

# Accommodation



*Townsville and Cairns offer a range of housing options for students. Purpose-built student accommodation is available on-campus in Townsville in halls of residence or colleges. In Cairns, privately owned and operated student residences are available near the campus.*

James Cook University's Accommodation Service helps students with on-campus accommodation in halls of residence and colleges, as well as in private rental or shared accommodation (off-campus). For students who prefer off-campus accommodation, the service maintains a register of houses, units, apartments, shared accommodation, home stay and caretaker arrangements. The Service also provides tenancy information and advice on how to rent a private house or unit.

A wide range of quality housing is available for rent near the Townsville and Cairns campuses, and students may find that renting privately is an affordable alternative to living on campus.

## Townsville Accommodation

On-campus accommodation is available at the Townsville campus for international students. Applications are considered from 1 September for the first teaching period/semester of the following year, and from 1 May for the second teaching period/semester and can be submitted by applying online through the JCU Accommodation Service website at [www.jcu.edu.au/accommodation](http://www.jcu.edu.au/accommodation)

A \$50 application fee applies for all students.

**JCU Halls of Residence** managed by JCU include

- University Hall
- George Roberts Hall

- Western Courts
- Rotary International House

The halls provide accommodation for more than 800 students in a variety of full board and self-catering (Rotary International House only), single and twin-share rooms and townhouses [www.jcu.edu.au/jcu halls](http://www.jcu.edu.au/jcu halls)

**John Flynn College** provides catered accommodation for 200 male and female students on campus [www.johnflynn.org](http://www.johnflynn.org)

**St Mark's College** has catered accommodation for 153 male and female students <http://stmarks.jcu.edu.au>

**The Combined Catholic Colleges** of St Raphael and St Paul consist of catered single study/bedroom accommodation for 90 male and 60 female students in separate wings. St Raphael's College provides catered accommodation for 74 female students in single study/bedrooms [www.cathcollegesjcu.edu.au](http://www.cathcollegesjcu.edu.au)

**Please note** students do not need to belong to any particular faith in order to stay at any of the JCU residential colleges.

## Cairns Accommodation

The following accommodation options are located near the Cairns campus and are independently owned and operated. In addition to this there are an abundant number of accommodation rental options in the area.

**Cairns Student Lodge:** Situated 400 metres (approximately 1300 feet) from the JCU Cairns campus. Fully catered



accommodation is provided and facilities include Internet access, a swimming pool, barbecue area, volleyball courts, dining room, conference facilities and an on-site manager. Cairns Student Lodge is linked to the JCU campus by a pedestrian walkway/bicycle path. [www.studentlodge.com.au](http://www.studentlodge.com.au)

**The Beaches Apartments:**

Just a 10-minute walk from the JCU Cairns campus. Furnished two bedroom/two bathroom apartments in a secure, resort style complex with an on-site manager. The Beaches has two free style swimming pools, one lap pool, a gymnasium, two BBQ areas with showers and toilets, a tennis court, study area and small putting green. For further information email [joeleen@glencorp.com.au](mailto:joeleen@glencorp.com.au)

**Singapore Accommodation**

Students at JCU Singapore are offered assistance with finding off-campus accommodation, usually in student hostels close to the campus. For more information on accommodation please send your enquiries to [isc@jcu.edu.sg](mailto:isc@jcu.edu.sg)

**Brisbane Accommodation**

Accommodation options in Brisbane include purpose-built student apartments such as Uni Lodge ([www.unilodge.com.au](http://www.unilodge.com.au)) and Southbank Campus Apartments ([www.southbankcampus.com.au](http://www.southbankcampus.com.au)) plus home stay families, and private rentals. For more accommodation information contact JCU Brisbane at [jcubrisbane@jcu.edu.au](mailto:jcubrisbane@jcu.edu.au)

**DID YOU KNOW**



Further information about private rental, share accommodation or boarding options can be obtained from the JCU Accommodation Service website at [www.jcu.edu.au/accommodation](http://www.jcu.edu.au/accommodation)

**EXAMPLES OF HOUSING OPTIONS AND MEDIAN COSTS IN TOWNSVILLE, CAIRNS AND BRISBANE**

Type of Accommodation	Townsville A\$/week	Cairns A\$/week	Brisbane A\$/week
<b>Off Campus</b>			
1 bedroom flat/unit	\$230	\$185	\$290
2 bedroom flat/unit	\$275	\$250	\$380
3 bedroom flat/unit	\$400	\$320	\$475
3 bedroom house	\$340	\$300	\$390
4 bedroom house	\$390	\$365	\$470
2 bedroom townhouse	\$285	\$235	\$365

All costs are median weekly rents and are correct for November 2011 in suburbs nearest JCU campuses only and subject to increase. Based on information from the Residential Tenancies Authority Queensland. [www.rta.qld.gov.au/median\\_rents.cfm](http://www.rta.qld.gov.au/median_rents.cfm)

<b>On Campus</b>			
Full-board	\$245 – \$280	Cairns Lodge \$265	N/A
Self-catering	\$150 – \$190	Cairns Lodge \$155	N/A

[www.jcu.edu.au/jcu halls/money](http://www.jcu.edu.au/jcu halls/money)

**Please note**

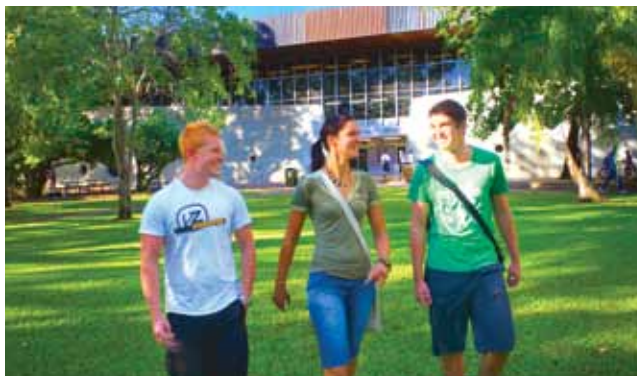
Students who have booked accommodation on campus may have to find independent accommodation off campus for one or two nights if arriving before the college residence opens. The James Cook International office assists students with booking temporary accommodation. The JCU Orientation program, introducing new students to life at the university, is held the week before classes commence each teaching period. All international students are required to attend.



# Important Information

## 2013 Study Dates (Townsville and Cairns)

Teaching Period One 2013 (Semester One)	
Arrival service	11 - 17 February
Orientation	18 – 22 February
Classes begin	25 February
Mid-semester recess	15 – 19 April
Classes end	27 May
Study/Exam Period	10 – 21 June
Teaching Period Two 2013 (Semester Two)	
Arrival service	15 - 21 July
Orientation	22 – 26 July
Classes begin	29 July
Mid-semester recess	30 September – 4 October
Classes end	28 October
Study/Exam Period	11 – 22 November



In 2012, classes begin on 20 February (teaching period one) and 23 July (teaching period two). Other 2012 dates can be found online at [www.jcu.edu.au/international](http://www.jcu.edu.au/international)

### Singapore and Brisbane

Singapore and Brisbane operate different academic calendars. Please check the individual campus websites for details.

## Financial Aid and Scholarships

Financial aid and scholarship opportunities are limited and generally not available from Australian sources. Students are advised to explore what funding options (ie loans, grants, subsidies, sponsorships, scholarships and other awards or benefits) are available from sources within their home country. JCU is familiar with some financial aid and scholarships that are available to students from specific nationalities and criteria; these are listed below. For more information, refer to the JCU scholarships website at [www.jcu.edu.au/scholarships](http://www.jcu.edu.au/scholarships)

### Financial Aid – Loans and Grants

Students from the following countries may be eligible to apply for loans, and in some cases grants or other non-repayable types of funding, from their government or a financial institution. Generally student loans must be repaid once study has ceased.

#### Canada

- Canadian federal and provincial student loans (i.e. Ontario Student Assistance Program, etc)

#### Germany

- German study grant scheme (BAföG)

#### India

- Credila Indian Student loan program

#### Netherlands

- Studiefinanciering

#### Scandinavia

- Scandinavian student loan programs (CSN, Statens Lånekasse, Statens Uddannelsesstøtte)

#### USA

- US Federal Aid (Stafford/PLUS)
- US private education loans (Sallie Mae)
- US Veterans Affairs

For more information on financial aid/loan programs email [ISCFinance@jcu.edu.au](mailto:ISCFinance@jcu.edu.au).

### Australian Development Scholarships (ADS)

JCU has welcomed hundreds of AusAID students from the developing world over the years, funded by the Australian Agency for International Development (AusAID). JCU has staff dedicated to ensuring that all AusAID students are provided with quality academic and personal support during their studies. For information on these services and about AusAID students at JCU visit [www.jcu.edu.au/international/ausaid](http://www.jcu.edu.au/international/ausaid) or email [AusAID@jcu.edu.au](mailto:AusAID@jcu.edu.au).

For further information about the ADS and AusAID schemes, including eligibility and how to apply, please visit the AusAID website [www.usaid.gov.au](http://www.usaid.gov.au)

### Other Scholarships and Grants

JCU offers a limited number of scholarships and grants to international students, however these are generally based on

academic merit only. For more information, refer to the JCU scholarships website [www.jcu.edu.au/scholarships](http://www.jcu.edu.au/scholarships)

### Sponsorships

Students seeking sponsorship must undertake to do so of their own accord as JCU cannot provide assistance in this area. Students who have secured formal sponsorship from an employer or other organisation should contact JCU to see whether the company can be recognised as an official JCU sponsor. Official JCU sponsors accept financial liability for tuition fees payable for the duration of the academic program, and JCU will deal directly with the sponsor in relation to all tuition fee matters. For more information on official JCU sponsorship email [ISCFinance@jcu.edu.au](mailto:ISCFinance@jcu.edu.au).

## Planning Your Budget

University study involves a range of expenses including living and study costs. Some are fixed and some will vary, depending on the type of course you are studying, and your lifestyle.

### Tuition Fees

Tuition fees vary between degrees and increase each new calendar year. Fee information for JCU degrees in Australia is given on page 10 of this publication, and for Singapore fees see page 8. Fee information is also available online at [www.jcu.edu.au/international/fees](http://www.jcu.edu.au/international/fees)

### Other costs

In addition to annual tuition fees, international students should be aware of the following costs.

### Overseas Student Health Cover (OSHC)

Students are required to organise private health insurance before coming to study in Australia and are expected to maintain this

insurance for the duration of their visa. Norwegian, Swedish and Belgian citizens do not require OSHC. OSHC is only available to student visa holders. Students who arrive in Australia without a student visa will not have access to OSHC until their student visa is granted. JCU organises OSHC membership for students who will be applying for a student visa.

Fees vary depending on the length of your student visa and are subject to change. OSHC fees are approximately A\$197 for six months/A\$395 for one year. Fees are subject to change.

### Student Services and Amenities Fee

The Student Services and Amenities fee provides students access to services that enhance your student experience through student life, student representation and advocacy. The fee for 2012 is \$263 and is subject to change for 2013.

### Books and miscellaneous study expenses

Approximately A\$400 is required per teaching period/semester for books. Other study costs, depending on the course, may

include: field trip costs, lab equipment, stationery, subject handbooks and calculator. It is also suggested that the costs for a computer/laptop be factored into your overall costs.

### APPROXIMATE LIVING COSTS

	Townsville/ Cairns (A\$)	Brisbane (A\$)	Sydney/ Melbourne (A\$)	Singapore (S\$)
<b>Rent (share only)</b>	\$100–\$130	\$130–\$150	\$150–\$180	\$90
<b>Food</b>	\$70	\$70	\$100	\$65
<b>Electricity</b>	\$20	\$30	\$30	\$20
<b>Transport/ Travel</b>	\$25–\$30	\$25–\$30	\$40–\$50	\$40
<b>Miscellaneous</b>	\$60	\$70	\$85	\$85
<b>TOTAL PER WEEK</b>	<b>\$275–\$300</b>	<b>\$315–\$340</b>	<b>\$405–\$445</b>	<b>\$285</b>
<b>TOTAL PER YEAR</b>	<b>\$14,300– \$16,120</b>	<b>\$16,900– \$18,200</b>	<b>\$21,060– \$23,140</b>	<b>\$16,900– \$17,940</b>

All costs are approximate and subject to change. Rent is based on sharing a privately rented house. See Accommodation on page 58 for more information.

## Australian Visa Information

It is essential that you apply for an Australian student visa before arriving in Australia. To apply you need to contact your nearest Australian Embassy, Consulate or High Commission. [www.dfat.gov.au/missions](http://www.dfat.gov.au/missions)

You can also contact the Department of Immigration and Citizenship (DIAC). The DIAC website contains comprehensive information about applying for visas, student work rights and restrictions, health requirements, and FAQs (Frequently Asked Questions) about student visas [www.immi.gov.au/immigration.htm](http://www.immi.gov.au/immigration.htm)

### Working as a student

Under Australian immigration regulations, students on a student visa may work up to 20 hours per week during university teaching periods and without restriction during university vacations.

Permission to work in Australia will be automatically included when you are granted your student visa. The JCU Careers and Employment Service can provide information on part-time and casual employment and manage an online job vacancy listing for students.

### Working rights for your partner

If your spouse is joining you, he or

she can also work while you are studying in Australia and can apply for a permission to work visa. The work conditions for your spouse will vary depending on the degree that you are taking.

### Bringing your family

Your spouse and children can join you in Australia but each family member must be added to the student visa application, and certain conditions will apply depending on the age of each member. If you have children who will be attending school while in Australia, you will have to pay school fees for them. These fees vary and can be as much as A\$10,120\* per year per student

attending a Queensland State School. Family members joining you in Australia will be included in your Overseas Student Health Cover, which may affect your premiums. [www.eqj.com.au/programs/dependant-student.html#fees](http://www.eqj.com.au/programs/dependant-student.html#fees)

### School tuition fee exemption

Some sponsored students may be exempt from paying school tuition fees for their children. For more information on eligibility and processes please visit the Queensland Government's website [www.eqj.com.au/pdfs/exemption\\_criteria.pdf](http://www.eqj.com.au/pdfs/exemption_criteria.pdf)

\*This fee can change from year to year and is payable on applications where school name is unconfirmed at the time the application is made. This fee will be refunded if EQJ is advised of school name within two weeks of a student's nominated start date. If this required notice is not given, students will not receive a refund of this fee.

# How to Apply

## Step 1

### Postgraduate Coursework

Select the course you would like to study at JCU, taking note of the duration, cost and campus availability. You may wish to include a second course preference.

Please note that some coursework degrees – psychology and public health and tropical medicine will also require you to complete two blue referee's report forms and submit a curriculum vitae/resume.

### Application deadlines:

- 1 January for Teaching Period 1 (Semester 1)
- 1 June for Teaching Period 2 (Semester 2)

The following courses have earlier application deadlines:

- Postgraduate coursework programs in Psychology – application deadline 29 October (for Teaching Period 1)
- Graduate Diploma of Education – acceptance deadline 1 December

### Postgraduate Research Degrees

Before submitting an application, applicants should make contact with a relevant JCU academic to discuss a possible research topic and availability of an academic supervisor. You can go to JCU's

Graduate Research School website at [www.jcu.edu.au/grs](http://www.jcu.edu.au/grs) and explore the "Find a Supervisor webpage", or contact James Cook International Admissions at [iscadmissions@jcu.edu.au](mailto:iscadmissions@jcu.edu.au). Select the course you would like to study at JCU, taking note of the duration, cost and campus availability. Complete the red postgraduate research application form and two blue referee's report forms.

### Research application deadlines

Research degrees are accepted throughout the year and start dates will depend on supervisor availability and project funding. However, the Research Scholarship applications close 31 August. The scholarship application can be found at [www.jcu.edu.au/grs/scholarships](http://www.jcu.edu.au/grs/scholarships)

## Step 2

Send your completed application form with all supporting documentation, including certified academic transcripts and/or work experience, and Academic IELTS/TOEFL scores (if required) to James Cook International or lodge your application with one of JCU's authorised overseas representatives. Your academic transcripts must be accompanied by the grading scale/key used at the institution where you

have undertaken your studies. Representative details can be found at: [www.jcu.edu.au/international/jcurepresentatives](http://www.jcu.edu.au/international/jcurepresentatives) If documentation is in a language other than English, an official certified translation must be included and translated by the issuing institution or by an official translating service.

## Step 3

We will assess your application based upon academic and English entry requirements for your preferred course.

## Step 4

If your application is successful, we will generate an electronic Offer package for you, which you will receive by e-mail. The package includes:

- Offer letter
- name and duration of the degree you have been accepted into
- any credit you have been awarded for previous study (if course syllabus of previous subjects provided with your application)
- tuition fees and OSHC costs

Links to:

- Preparing for Arrival at JCU
- Accommodation information.

## Step 5

Once you have received your offer, please complete and sign the Acceptance and Payment Agreement and meet any conditions if outlined on page one of your Offer and return it to James Cook International or your JCU representative, along with any payment as set out in your offer letter.

## Step 6

We will then issue you an electronic Confirmation of Enrolment (eCOE). This is the document you will need to obtain a student visa for Australia. Further details will be provided upon acceptance of your offer.

## Step 7

Use your eCOE to obtain a student visa from your nearest Embassy or Consulate in your home country. Please note that visa applications can take up to three months or more to process, depending on your nationality and/or the country you are applying from.

## Step 8

Once you have a student visa, you are ready to begin your study at JCU.

## DID YOU KNOW

You can find a list of possible JCU academic supervisors and research topics for your area of interest at

[www.jcu.edu.au/grs/topics](http://www.jcu.edu.au/grs/topics)

## CHECKLIST

Make sure you have included all required documents before sending your application to JCU. Check that you have:

- ✓ Answered all questions
- ✓ Included all certified academic transcripts and degree certificates (if completed)
- ✓ Supplied English language test results (if applicable)
- ✓ Included referee reports where required
- ✓ Included a two-page research proposal (research applicants only)
- ✓ Included a 100-250 word personal statement and curriculum vitae/resume (if applicable)
- ✓ Read and signed the declaration
- ✓ Made a copy of all documents for your records



## Application for admission to a Postgraduate Coursework Course

PERSONAL DETAILS										
Family Name					Title e.g. Mr/Mrs/Dr					
Given Names					Male <input type="checkbox"/> Female <input type="checkbox"/>					
Permanent address in home country										
Telephone number in home country										
Fax number in home country										
Address (where we can contact you about your application). If applying through an agent, please put the agent's details here.										
Country in which you are submitting this application										
Telephone			Mobile/Cell Phone				Fax			
Email (Where we can contact you about your application)										
Date of Birth		Day		Month		Year				
Citizenship					Country of Birth					
Do you hold a current Australian visa?					<input type="checkbox"/> Yes <input type="checkbox"/> No		If yes, please give category of visa			
Do you have a disability, psychological or medical condition which may affect your studies?					<input type="checkbox"/> Yes <input type="checkbox"/> No					
If yes, attach supporting documents										
Will you be bringing family members on a dependant student visa?					<input type="checkbox"/> Yes <input type="checkbox"/> No					
ENGLISH LANGUAGE PROFICIENCY										
English is the main language spoken in my home					<input type="checkbox"/> Yes <input type="checkbox"/> No					
If no, please indicate language										
<input type="checkbox"/> I will have / or have taken an		<input type="checkbox"/> IELTS test		<input type="checkbox"/> TOEFL test		within the past two years (please tick appropriate box)				
on		Day		Month		Year		Please attach original documentation		
<input type="checkbox"/> I have undertaken studies (secondary/high school/university) for a minimum of two years in which the language of instruction was English. <i>Please attach documentary evidence.</i>										
PREFERRED COURSE										
<input type="checkbox"/> Masters Degree		<input type="checkbox"/> Graduate/Postgraduate Diploma		<input type="checkbox"/> Graduate/Postgraduate Certificate		<input type="checkbox"/> Graduate Certificate/Diploma of Research Methods				
Name of Course (1st choice)			e.g. Master of Science							
Major (if applicable)			e.g. Aquaculture							
Name of Course (2nd choice)										
Major (if applicable)										
I wish to study at (tick one only)			<input type="checkbox"/> Townsville		<input type="checkbox"/> Cairns		<input type="checkbox"/> Brisbane		<input type="checkbox"/> Singapore	
<b>PLEASE NOTE: NOT ALL PROGRAMS ARE AVAILABLE AT ALL CAMPUSES.</b>										
When would you like to start your studies?										
Townsville or Cairns		Teaching Period (semester)		<input type="checkbox"/> One (February)		<input type="checkbox"/> Two (July)		Year		
Brisbane or Singapore		Trimester		<input type="checkbox"/> One (February)		<input type="checkbox"/> Two (June)		<input type="checkbox"/> Three (October)		
								Year		

## EDUCATIONAL QUALIFICATIONS

NAME OF SCHOOL OR INSTITUTION	NAME OF QUALIFICATION OR COURSE	YEARS ATTENDED (MONTH/YEAR TO MONTH/YEAR)	COURSE COMPLETED (YES/NO)

Please attach certified copies of transcripts of all academic records. (A certified copy means a stamped photocopy signed by a public notary or institution representative or authorised JCU agent as being a true and accurate record of the original document). All documents must be translated into English by the issuing institution or by an official translating service.

## CREDIT FOR PREVIOUS STUDY

Are you applying for credit for previous studies?  Yes  No

If yes, please attach the course syllabus for each of the subjects you wish to seek credit for. If your educational institution has an articulation agreement with JCU, you are not required to submit this documentation.

## FINANCIAL SPONSOR

I am being sponsored by the organisation whose details are attached. *Attach official letter to application.*

Other

None

## DECLARATION

### DECLARATION (All applicants must complete)

I declare that the information I have supplied on the application form is, to the best of my knowledge, complete and correct. I acknowledge that my application for admission is subject to acceptance by the University which has power to impose conditions. I further acknowledge that in the event my application for admission as a student at the University is accepted by the University, and in consideration of provision of educational resources by the University, I will be bound by the provisions of the relevant student handbooks, statutes, rules and policies of the University as are in force from time to time, and will be subject to the lawful instructions of officers of the University.

#### PRIVACY

Personal information supplied on this form will be handled in accordance with JCU's Privacy Policy (available at [www.jcu.edu.au](http://www.jcu.edu.au)).

I acknowledge that this information may be provided to other areas of JCU and to third parties for administrative and legislative purposes (under the ESOS Act 2000 and the National Code), including but not limited to the JCU Student Association; JCU's educational representatives and business partners; Australian Commonwealth and State agencies; other academic institutions to verify my previous qualifications; the Fund Manager of the ESOS Assurance Fund; and my Overseas Student Health Cover (OSHC) provider.

Signature

Date

Please send all completed forms to one of the following JCU locations, or to one of JCU's approved agents, listed online at: [www.jcu.edu.au/international/jcurepresentatives](http://www.jcu.edu.au/international/jcurepresentatives)

#### Townsville and Cairns campuses

International Admissions  
James Cook International  
Townsville QLD 4811  
Australia  
Phone: +61 7 4781 5601  
Fax: +61 7 4781 5988  
Email: [iscadmissions@jcu.edu.au](mailto:iscadmissions@jcu.edu.au)

#### Singapore campus

Admissions Office  
James Cook University Singapore  
600 Upper Thomson Road  
Singapore 574421  
Phone: +65 6576 6833  
Fax: +65 6455 2833  
Email: [admissions@jcu.edu.sg](mailto:admissions@jcu.edu.sg)

#### Brisbane campus

International Admissions  
James Cook University Brisbane  
349 Queen Street  
Brisbane QLD 4000  
Australia  
Phone: +61 7 3001 7800  
Fax: +61 7 3001 7899  
Email: [admissions@jcu.edu.au](mailto:admissions@jcu.edu.au)

## Application for admission to a Postgraduate Research Course

PERSONAL DETAILS					
Family Name			Title e.g. Mr/Mrs/Dr		
Given Names			Male <input type="checkbox"/> Female <input type="checkbox"/>		
Permanent address in home country					
Telephone number in home country					
Fax number in home country					
Address (where we can contact you about your application). If applying through an agent, please put the agent's details here.					
Country in which you are submitting this application					
Telephone		Mobile/Cell Phone		Fax	
Email (Where we can contact you about your application)					
Date of Birth		Day	Month	Year	
Citizenship			Country of Birth		
Do you hold a current Australian visa?		<input type="checkbox"/> Yes <input type="checkbox"/> No		If yes, please give category of visa	
Do you have a disability, psychological or medical condition which may affect your studies?		<input type="checkbox"/> Yes <input type="checkbox"/> No			
If yes, attach supporting documents					
Will you be bringing family members on a dependant student visa?		<input type="checkbox"/> Yes <input type="checkbox"/> No			

ENGLISH LANGUAGE PROFICIENCY					
English is the main language spoken in my home		<input type="checkbox"/> Yes <input type="checkbox"/> No			
If no, please indicate language					
<input type="checkbox"/> I will have / or have taken an		<input type="checkbox"/> IELTS test		<input type="checkbox"/> TOEFL test <small>JCU TOEFL Code is 9811</small> within the past two years (please tick appropriate box)	
on	Day	Month	Year	<i>Please attach original documentation</i>	
<input type="checkbox"/> I have undertaken studies (secondary/high school/university) for a minimum of two years in which the language of instruction was English. <i>Please attach documentary evidence.</i>					

PREFERRED COURSE					
<input type="checkbox"/> Master		<input type="checkbox"/> Doctorate			
Name of Course (1st choice)					
Study Area					
Name of Course (2nd choice)					
Study Area					
I wish to study at (tick one only)		<input type="checkbox"/> Townsville		<input type="checkbox"/> Cairns <input type="checkbox"/> Singapore	
When would you like to start your studies?		Month		Year	

## EDUCATIONAL QUALIFICATIONS

NAME OF SCHOOL OR INSTITUTION	NAME OF QUALIFICATION OR COURSE	YEARS ATTENDED (MONTH/YEAR TO MONTH/YEAR)	COURSE COMPLETED (YES/NO)

Please attach certified copies of transcripts of all academic records. (A certified copy means a stamped photocopy signed by a public notary or institution representative or authorised JCU agent as being a true and accurate record of the original document). All documents must be translated into English by the issuing institution or by an official translating service.

**TITLE OF PROPOSED STUDY** Please attach a two-page outline of your research topic. You should consult a member of JCU staff prior to doing this. A list of potential research topics can also be found at [www.jcu.edu.au/grs/topics](http://www.jcu.edu.au/grs/topics)

**DETAILS OF RESEARCH EXPERIENCE** Please provide a list of projects undertaken, your role and the time frame of the project. Please attach the resultant publication list including theses/dissertation reports on a separate sheet. (A Curriculum Vitae (CV) or Resumé is acceptable).

**JCU ACADEMIC CONTACTS** Please list the JCU academic contact/s with whom you have discussed your research proposal.  
**Note:** It is essential that you contact an academic supervisor in your proposed area of research prior to submission of your application.

## FINANCIAL SPONSOR

I am being sponsored by the organisation whose details are attached. Attach official letter to application.

I have applied for a scholarship. Give name of scholarship and awarding body.

Other  None

## DECLARATION

### DECLARATION (All applicants must complete)

I declare that the information I have supplied on the application form is, to the best of my knowledge, complete and correct. I acknowledge that my application for admission is subject to acceptance by the University which has power to impose conditions. I further acknowledge that in the event my application for admission as a student at the University is accepted by the University, and in consideration of provision of educational resources by the University, I will be bound by the provisions of the relevant student handbooks, statutes, rules and policies of the University as are in force from time to time, and will be subject to the lawful instructions of officers of the University.

#### PRIVACY

Personal information supplied on this form will be handled in accordance with JCU's Privacy Policy (available at [www.jcu.edu.au](http://www.jcu.edu.au)).

I acknowledge that this information may be provided to other areas of JCU and to third parties for administrative and legislative purposes (under the ESOS Act 2000 and the National Code), including but not limited to the JCU Student Association; JCU's educational representatives and business partners; Australian Commonwealth and State agencies; other academic institutions to verify my previous qualifications; the Fund Manager of the ESOS Assurance Fund; and my Overseas Student Health Cover (OSHC) provider.

Signature

Date

Please send all completed forms to the address below, or to one of JCU's approved agents, listed online at:  
[www.jcu.edu.au/international/jcurepresentatives](http://www.jcu.edu.au/international/jcurepresentatives)

### Townsville and Cairns campuses

International Admissions  
James Cook International  
Townsville QLD 4811  
Australia  
Phone: +61 7 4781 5601  
Fax: +61 7 4781 5988  
Email: [iscadmissions@jcu.edu.au](mailto:iscadmissions@jcu.edu.au)

## Academic Referee's Report

For all Applicants to Postgraduate Research Degrees and select Coursework Degrees

Please make a copy of this form and send one to each of your two referees. These referees should be closely associated with your recent work.

CONTACT DETAILS							
Applicant's Family Name						Title e.g. Mr/Mrs/Dr	
Applicant's Given Names						Male <input type="checkbox"/> Female <input type="checkbox"/>	
Referee's Name				Referee's Title/Position			
Referee's School/University							
Telephone				Fax			
Email							
QUESTIONS							
How long have you known the applicant?		Years		Months			
Please indicate briefly the extent of your knowledge of the applicant's work							
Please assess the applicant's emotional maturity and readiness for research higher degree studies by placing a tick in the appropriate box.							
	<b>No opportunity to observe</b>	<b>Below Average</b>	<b>Average 60–41%</b>	<b>Above Average 40–25%</b>	<b>Very Good 24–11%</b>	<b>Excellent Top 10–6%</b>	<b>Outstanding Top 5%</b>
Knowledge of own discipline							
Ability to express ideas							
Command of research techniques							
Critical ability							
Initiative and motivation							
Ability to plan							
Ability to cope with criticism							
Self management and resilience							
Perseverance in pursuing aims							
Teaching ability or potential (if applicable)							
Ability to meet deadlines							
Aptitude for research							
Overall Ranking for Honours Year (if applicable) <i>Please attach any additional comments on a separate sheet.</i>							
<input type="checkbox"/> <b>Group D » Good</b> Variable performance with strong elements of excellence and performance which on balance is first class.	<input type="checkbox"/> <b>Group C » Very Good</b> Solid performance in all components of honours work, but demonstrating less flair and originality than Groups A or B.	<input type="checkbox"/> <b>Group B » Excellent</b> Excellence and originality in thesis and in most other components of honours work.	<input type="checkbox"/> <b>Group A » Outstanding</b> Outstanding in all components of honours work, especially in the research project which must demonstrate originality and flair.				

Signature of Referee		Date
<p><i>Note: Information provided may be made available to Australian Commonwealth and State agencies and the Fund Manager of the ESOS Assurance Fund, pursuant to obligations under the ESOS Act 2000 and the National Code.</i></p>		

SEND REPORT TO	
James Cook International	Phone: +61 7 4781 5601
James Cook University	Fax: +61 7 4781 5988
Townsville QLD 4811	Email: <a href="mailto:iscadmissions@jcu.edu.au">iscadmissions@jcu.edu.au</a>
Australia	

## Academic Referee's Report

For all Applicants to Postgraduate Research Degrees and select Coursework Degrees

Please make a copy of this form and send one to each of your two referees. These referees should be closely associated with your recent work.

CONTACT DETAILS			
Applicant's Family Name			Title e.g. Mr/Mrs/Dr
Applicant's Given Names			Male <input type="checkbox"/> Female <input type="checkbox"/>
Referee's Name		Referee's Title/Position	
Referee's School/University			
Telephone		Fax	
Email			

QUESTIONS			
How long have you known the applicant?	Years	Months	
Please indicate briefly the extent of your knowledge of the applicant's work			

Please assess the applicant's emotional maturity and readiness for research higher degree studies by placing a tick in the appropriate box.

	No opportunity to observe	Below Average	Average 60–41%	Above Average 40–25%	Very Good 24–11%	Excellent Top 10–6%	Outstanding Top 5%
Knowledge of own discipline							
Ability to express ideas							
Command of research techniques							
Critical ability							
Initiative and motivation							
Ability to plan							
Ability to cope with criticism							
Self management and resilience							
Perseverance in pursuing aims							
Teaching ability or potential (if applicable)							
Ability to meet deadlines							
Aptitude for research							

**Overall Ranking for Honours Year (if applicable)** Please attach any additional comments on a separate sheet.

<input type="checkbox"/> <b>Group D » Good</b> Variable performance with strong elements of excellence and performance which on balance is first class.	<input type="checkbox"/> <b>Group C » Very Good</b> Solid performance in all components of honours work, but demonstrating less flair and originality than Groups A or B.	<input type="checkbox"/> <b>Group B » Excellent</b> Excellence and originality in thesis and in most other components of honours work.	<input type="checkbox"/> <b>Group A » Outstanding</b> Outstanding in all components of honours work, especially in the research project which must demonstrate originality and flair.
--	--	---	--

Signature of Referee	Date
<p><i>Note: Information provided may be made available to Australian Commonwealth and State agencies and the Fund Manager of the ESOS Assurance Fund, pursuant to obligations under the ESOS Act 2000 and the National Code.</i></p>	

SEND REPORT TO	
James Cook International	Phone: +61 7 4781 5601
James Cook University	Fax: +61 7 4781 5988
Townsville QLD 4811	Email: <a href="mailto:iscadmissions@jcu.edu.au">iscadmissions@jcu.edu.au</a>
Australia	

# Getting to James Cook University

## Townsville

Three airlines (Qantas, Virgin Blue and Jetstar) fly from Brisbane (the capital of Queensland) to Townsville several times a day and there are numerous flights from all around the world into Brisbane. Another option for getting to Townsville is flying directly to Cairns and then taking the 50-minute shuttle flight to Townsville. Students at the Townsville campus are strongly recommended to fly into Townsville, as it is a 4-hour drive from Cairns and a 16-hour drive from Brisbane. There are also regular, direct flights from Sydney and Melbourne into Townsville.

## Cairns

Cairns has Australia's fifth busiest international airport. There are direct flights from Japan (four cities), Hong Kong, Papua New Guinea, New Zealand, Micronesia, Bali and Singapore, with more routes planned for the future. Numerous airlines fly from Sydney and Brisbane into Cairns daily.

## Singapore

Singapore is an international destination with daily flights to and from the citystate from all over the world.

## Brisbane

Brisbane has a large international airport with flights daily to and from countries all over the world.



## Where we are

By Air	
Townsville to	
Cairns	50 minutes
Brisbane	1 hour 45 minutes
Sydney	2 hours 45 minutes
Melbourne	3 hours 30 minutes

By Road	
Townsville to	
Cairns	4 hours
Brisbane	16 hours
Sydney	27 hours
Melbourne	31 hours

PHOTOS: Tourism Queensland, Insight Creative, Rob Parsons, Brad Newton Photography and Andrew Rankin Photography

DESIGN: Zephyrmedia

James Cook University 2013 International Postgraduate Prospectus is published by James Cook International, James Cook University, January 2012. This publication is intended as a general introduction to James Cook University. All care has been taken to ensure information is correct at the time of printing. If you wish to apply to the University, contact any of its offices to confirm current admission requirements. The University reserves the right to alter any admission requirement or degree included in this publication without prior notice.

For information about undergraduate studies, see the separate publication James Cook University 2013 International Undergraduate Prospectus.

CRICOS Provider Code: 00117J

# Contact us

## Townsville

James Cook International  
Townsville QLD 4811  
Australia

Phone: + 61 7 4781 5601

Fax: + 61 7 4781 5988

Enquire online at [www.jcu.edu.au/international](http://www.jcu.edu.au/international)

## Cairns

James Cook International  
Cairns QLD 4870  
Australia

Phone: + 61 7 4042 1438

Fax: + 61 7 4042 1580

Enquire online at [www.jcu.edu.au/international](http://www.jcu.edu.au/international)

## Singapore

600 Upper Thomson Road  
Singapore 574421

Phone: + 65 6576 6833

Fax: + 65 6455 2833

Email: [enquiries@jcu.edu.sg](mailto:enquiries@jcu.edu.sg)

Web: [www.jcu.edu.sg](http://www.jcu.edu.sg)

## Brisbane

349 Queen Street  
Brisbane QLD 4000  
Australia

Phone: + 61 7 3001 7800

Fax: + 61 7 3001 7899

Email: [admissions@jcub.edu.au](mailto:admissions@jcub.edu.au)

Web: [www.jcub.edu.au](http://www.jcub.edu.au)

Follow us on

