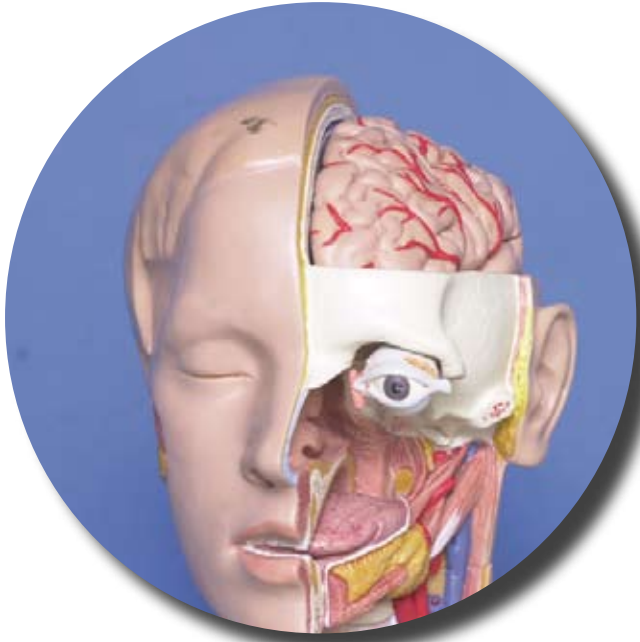




UNIVERSITY OF NEW ENGLAND



Psychology

Undergraduate and Postgraduate Courses

UNE
UNIVERSITY OF
NEW ENGLAND



Why choose UNE?

The University of New England (UNE) has a distinguished tradition of excellence in teaching, learning and research. As Australia's oldest regional university, UNE began life as part of the University of Sydney in 1938.

- We are Australia's most experienced distance educator, with over 50 years at the forefront of distance education.
- Our academic staff have a well-earned reputation for being among the nation's finest in university teaching.
- In the 2006 and 2007 Carrick Awards for Australian University Teaching, UNE was awarded citations for Outstanding Contributions to Student Learning for all of its 18 nominees.
- UNE has consistently received the top rating (five stars) for eight out of nine years in the *Good Universities Guide* for 'Teaching Quality' and 'Graduate Satisfaction'.
- As an on-campus UNE student you will benefit from small class sizes and personal attention, or you may enjoy the flexibility of distance education, backed up by UNE's wealth of experience.
- Regardless of your chosen study mode, you will leave with a highly respected degree and an experience that will stay with you for life.
- What sets UNE apart is the unique living and learning experience. We have one of Australia's most extensive, traditional residential college systems and boast sporting and cultural facilities that are the envy of our city counterparts.
- UNE offers a wide range of student support services ensuring a vibrant educational and personal experience. These benefits include excellent academic support, careers and counselling services, extensive library and IT facilities and support.
- So if you are looking for a university that combines the highest academic standards with industry valued qualifications and flexible modes of study, then UNE is the smart choice.

UNE's campus is located in Armidale, a city of four distinct seasons and a centre for arts and education. Located midway between Sydney and Brisbane, Armidale is well serviced by rail, road and air access.

Why study psychology at UNE?

Psychology is the scientific study of human behaviour – our individual characteristics and abilities, how we act in social situations, how our brain works, and how our experiences and biology interact to produce normal and abnormal behaviour.

At UNE, our units of study examine learning, emotion, perception, memory, language, and consciousness. We also cover applied topics such as parenting principles, workplace psychology, health psychology, and the diagnosis and treatment of mental illness. Throughout all our programs, we emphasise the importance of research skills, data analysis, and the writing of scientific reports.

Psychology at UNE has a long and distinguished history. We offer courses and degrees that are recognised and respected by professional bodies, registration agencies, and other universities throughout Australia and the world. All staff are highly qualified and research and teach in a wide range of psychology topic areas.

We also offer postgraduate research degrees and a professional training program that enables students to become registered psychologists.

What are my career opportunities?

Psychology graduates are employed as counsellors, research assistants, human resource consultants, market researchers, health and social welfare workers, and of course professional psychologists. The Graduate Careers Council of Australia reports a strong demand for people with psychology qualifications in Australia, see www.gradsonline.com.au

Many careers are enhanced by a knowledge of psychological principles and how depression, anxiety, fatigue or stress affect mental health and behaviour. Careers that require interacting with people or that provide services and care for others will benefit from the study of psychology. In addition, the research and data analysis skills we provide are highly valued in the workplace.

What assumed or recommended knowledge do I need?

Students enrolling in Psychology units should be proficient in English.

Are the courses offered on campus and by distance education?

All courses are offered on campus and by distance education.

What are the major areas of research in psychology at UNE?

The major areas of research within Psychology at UNE include laboratory based projects on animal learning, EEG, cognition, perception, language acquisition, reading, and effective therapies for mental disorders and behavioural problems. Survey based projects examine health and fatigue, substance use and problem behaviours, migrant adjustment, personality, emotion, and mental disorders. One major international collaboration examines the relative contribution of genetic and environmental components to human behaviour using large numbers of twins. Research in Psychology at UNE is very active with numerous projects being undertaken by staff, honours students, and postgraduate students simultaneously.

Research and facilities

The research facilities at UNE include a cognition laboratory, EEG facilities, animal learning laboratory, and an anechoic chamber (for sound perception projects). We have good computer and library facilities and a clinic which is used as a training and research facility in our postgraduate clinical program. Regular talks, seminars and visits from international scholars ensures research is an active part of Psychology at UNE.

Partnerships, networks and industry links

Psychology at UNE is closely affiliated with the Australian Psychological Society (www.psychology.org.au) and state registration boards. In addition, the Australian Psychology Accreditation Council regularly assesses and reviews our programs to ensure they meet a high and consistent standard. The psychology clinic provides psychological services to patients of the New England Division of General Practice and many staff are members of national and international societies and research groups.

Graduate attributes and employer satisfaction

Employers recognise the high quality of the degree from UNE. During your time at UNE you will acquire the skills that are sought after by employers; skills that are immediately transferable into a work environment and industry-valued:

- Knowledge of a discipline
- Communication skills
- Global perspective
- Information literacy
- Life-long learning
- Problem-solving
- Social responsibility
- Team work



Sally Rooke

Psychology

"The convenience of being able to study psychology by distance education was what initially drew me to UNE. But the experiences I had as a student were what kept me here through my undergraduate degree, and through the PhD that I am close to finishing. Throughout my time here, I have received an enormous amount of encouragement and support from the psychology academics (who probably believed in me more than I believed in myself!). Their efforts to make learning material memorable and inspiring, and to make students feel valued, have made studying a very enjoyable experience. As a postgraduate student, I have been provided with outstanding training in research, several teaching opportunities, and the opportunity to travel overseas for psychology conferences. I feel very lucky."

Undergraduate degrees and diplomas

Bachelor of Psychological Science
Bachelor of Psychology with Honours
Bachelor of General Audiology
Bachelor of Arts
Bachelor of Social Science
Bachelor of Science

Double degree programs

Bachelor of Arts/Bachelor of Business
Bachelor of Arts/Bachelor of Laws
Bachelor of Arts/Bachelor of Science
Bachelor of Arts/Bachelor of Teaching

Bachelor Honours

Bachelor of Arts with Honours
Bachelor of Science with Honours
Bachelor of Social Science with Honours
Bachelor of Psychology with Honours

Postgraduate

Postgraduate Diploma in Psychology
Graduate Diploma in Social Science
Graduate Certificate in Arts
Master of Psychology (Clinical)

Postgraduate research

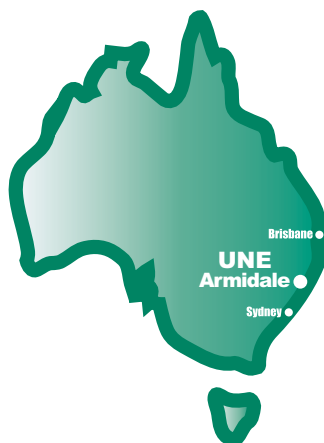
Master of Arts with Honours
Master of Science
Doctor of Philosophy
Doctor of Philosophy (Clinical Psychology)

Further information

Freecall 1800 818 865
www.une.edu.au

Students are also encouraged to look at the following website for specific course information:

www.une.edu.au/bcss/psychology/



You don't have to go far ...
to go far.

General Enquiries and Admission Details

Student Centre

University of New England NSW 2351

Website: www.une.edu.au

Freecall: 1800 818 865

Produced by Marketing and Public Affairs.

Information correct at the time of printing. CRICOS Provider No. 00003G. Printed July 2008.