



2013 BOND UNIVERSITY

UNDERGRADUATE GUIDE





Everyone has expectations for their future ...

And success means different things to different people.

Some are happy to live from day to day.
Others - like yourself - want much more.
You think bigger. You want to move faster.
You want to go further.

You're determined to achieve something extraordinary.

At Bond University, we recognise your passion and
fast-track your progress.

**BOND UNIVERSITY.
WE SHARE YOUR AMBITION.
WE BRING IT TO LIFE.**





VICE-CHANCELLOR'S MESSAGE

Your passport to an extraordinary career

Choosing the right university is the most important decision you will make at this stage of your life. It's your investment in the future - not just financially, but in terms of the time and effort you will put into your studies over the next few years.

So, like any investment, your choice must be based on the potential returns: Which university will give you more than a degree? Which university will open the door to a truly extraordinary career?

At Bond University, we believe that the knowledge and skills you learn in the classroom are simply the starting point.

Just imagine what you will achieve working with internationally renowned teachers in small personalised classes. Just imagine how quickly you could climb the corporate ladder if you graduated a full year ahead of your competitors and had specific training in leadership skills. And with a global network of contacts, you'd be able to work anywhere in the world.

We know you have the potential to make a real difference - because we've seen so many of our students over the years do just that. Living and working in every corner of the globe, they are now heading up major corporations, helping disadvantaged communities in developing countries, researching medical breakthroughs, engineering cutting-edge technologies.

As a graduate of Bond University, you will be joining their elite ranks.

If your goal is to be the best that you can be, to have your choice of the top jobs and to forge a successful and satisfying career at the highest level, Bond University can give you all the tools you need to bring your ambition to life.

I very much look forward to sharing your journey.

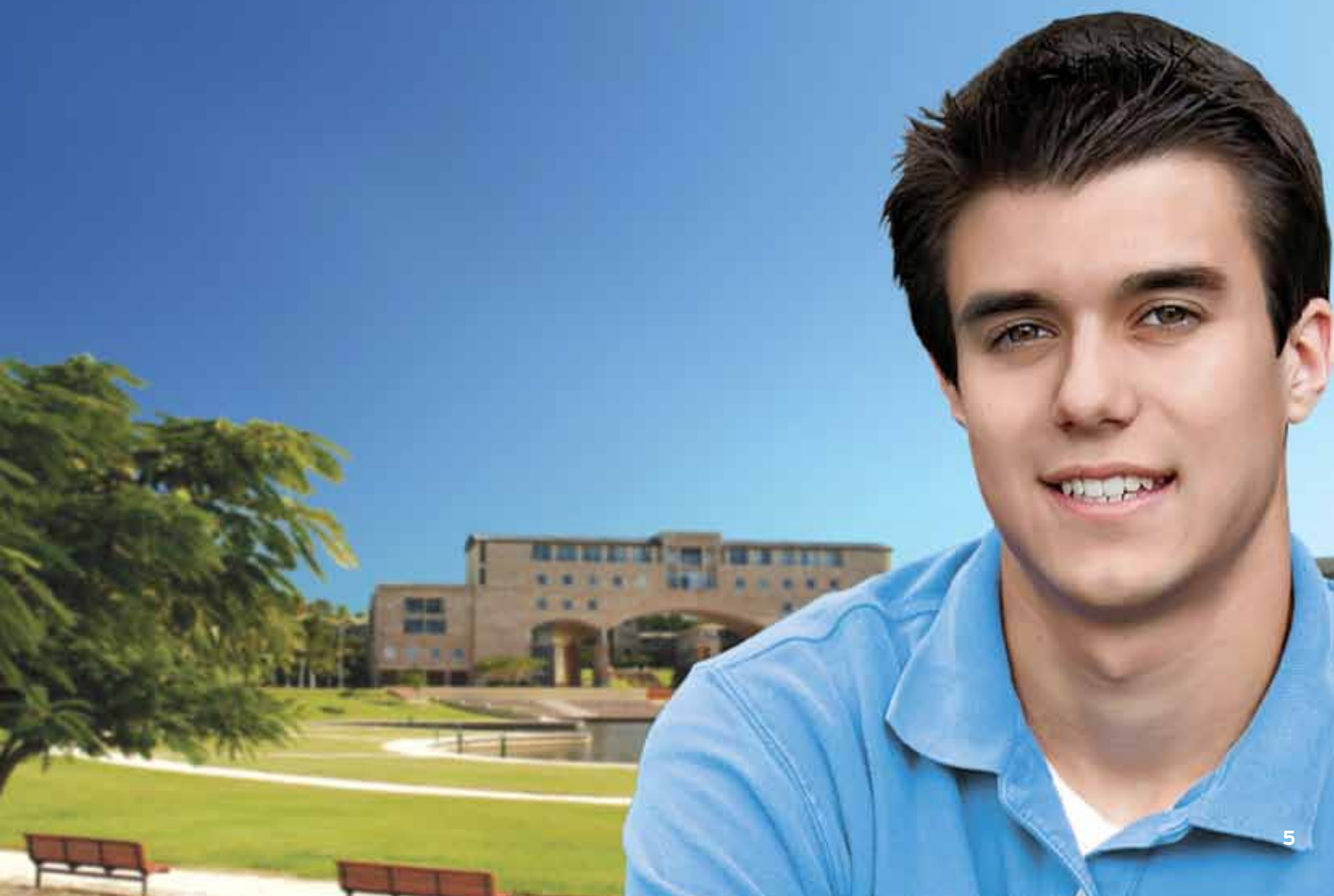
Professor Tim Brailsford
Vice-Chancellor and President

Bond University was given its University status in 1987, having been established under an Act of the Queensland Parliament. Bond is part of the Australian system of higher education, and is recognised as an accredited Australian university by the Australian Ministerial Council on Education, Employment, Training and Youth Affairs (MCEETYA), which is responsible for establishing national protocols for education in Australia. It is also a full member of Universities Australia (UA) and the Association of Commonwealth Universities.

The information published in this document is correct at the time of printing. However, all programs are subject to review by the Academic Senate of the University and the University reserves the right to change its program offerings and subjects without notice. For the most up-to-date information, visit www.bond.edu.au. The information published in this document is intended as a guide and persons considering an offer of enrolment should contact the relevant faculty to see if any changes have been made before deciding to accept their offer. (Date printed December 2011)

CONTENTS

06	Welcome to Bond
08	Top 10 Reasons Why Bond
30	Studying at Bond
32	Pathways Into Bond University
34	Where Will Your Degree Take You?
39	Faculty of Business
49	Faculty of Health Sciences & Medicine
61	Faculty of Humanities & Social Sciences
79	Faculty of Law
87	Institute of Sustainable Development & Architecture
98	Exchange Partners
100	State-of-the-Art Facilities
102	Student Services
104	Life at Bond
108	Investing in Your Future
110	Application and Entry Procedures
112	Academic Calendar



WELCOME TO BOND

Bond University has a distinguished reputation as Australia's first private, not-for-profit university. Created in the scholarly traditions of pre-eminent private universities of world standing, Bond challenges students to be leaders and thinkers.

A Bond degree takes you beyond the accepted definition of a university education to develop initiative, enterprise, ambition and a lifelong commitment to making a meaningful contribution in your chosen field. A wide range of innovative and challenging undergraduate courses are offered:

- Faculty of Business
 - School of Business
 - School of Information Technology
 - School of Hotel, Resort and Tourism Management
- Faculty of Health Sciences & Medicine
 - School of Health Sciences
 - School of Medicine
- Faculty of Humanities & Social Sciences
 - School of Communication and Media
 - School of Humanities
 - School of Social Sciences
- Faculty of Law
- Institute of Sustainable Development & Architecture
 - Mirvac School of Sustainable Development
 - Soheil Abedian School of Architecture

Whatever degree you choose, you'll find that Bond's dedication to the highest academic standards, coupled with open access to world-class teaching professionals, industry leaders and blue chip employers will help you to reach your very highest potential.



UNIVERSITY RATINGS

- ★★★★★ STUDENT TO STAFF RATIO*
- ★★★★★ STAFF QUALIFICATIONS*
- ★★★★★ ALL GRADUATES: TEACHING QUALITY*
- ★★★★★ ALL GRADUATES: GENERIC SKILLS*
- ★★★★★ ALL GRADUATES: OVERALL SATISFACTION*
- ★★★★★ DOMESTIC GRADUATES: TEACHING QUALITY*
- ★★★★★ DOMESTIC GRADUATES: GENERIC SKILLS*
- ★★★★★ DOMESTIC GRADUATES: OVERALL SATISFACTION*
- ★★★★★ INTERNATIONALISATION**
- ★★★★★ INFRASTRUCTURE**

- #1** OVERALL GRADUATE SATISFACTION^
- #1** STUDENT TO TEACHER RATIO^^
- #1** GRADUATE SATISFACTION IN LAW^

* 2012 Good Universities Guide

** 2011 QS Star Ratings

^ Compared to Australia's Group of Eight leading universities, Graduate Careers Australia's 2009 Australian Graduate Survey based on 2008 graduates

^^ 2008 Student To Teacher Ratio, Universities Australia



{10 : 1} access to academics + personalised³ coaching

+ world class facilities x fun² x industry partnerships

x global alumni network

one year earlier career launch



= YOU¹⁰

From a student perspective, Bond University stands alone. There is no university in Australia that rates higher for overall graduate satisfaction. The reason why? Well, actually there are 10 of them, which all add up to a far better university experience and outcome for you, regardless of which field of study you choose. We call it the 'Bond Factor', which basically translates to the 'What's in it for Me Factor' - something you should always take into account, whichever university you are considering.





1

Outcome = income

Invest in your future

Bond University is not-for-profit. What this means is that the only outcome we're driven by is your success. One hundred per cent of your investment goes into providing the best personalised education for you, ensuring you are better prepared for career ascension and future income maximisation.



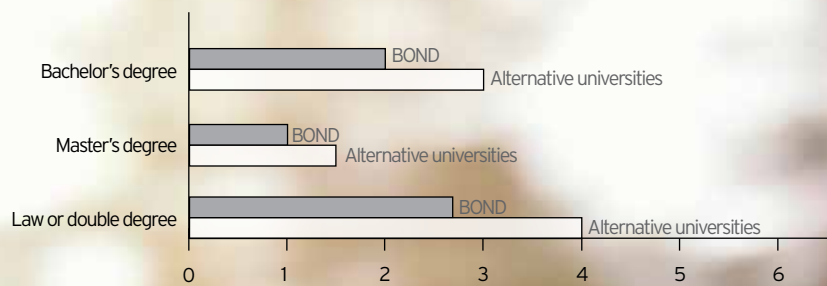
2

What if you had a one year head-start?

Fast-tracked degrees

Bond offers fast-tracked degrees so that you can graduate up to 12 months earlier than at other universities.

Bond's three semesters per year structure makes this possible, and the truth of the matter is that there's still plenty of time to have a social life and enjoy yourself at Bond.





Professor Chris Del Mar, Professor of Primary Care Research

World-renowned Evidence-Based Medicine specialist.

Visiting Professor of General Practice - Oxford University.

Cambridge-educated, internationally esteemed researcher and academic.

Lecturer, Bond University Medicine Program.



3 Personalised attention

Australia's lowest student to teacher ratio

Bond's personalised teaching philosophy manifests itself in a 10 : 1* student to teacher ratio. This results in smaller classes and unprecedented one-on-one access to your professors. Even beyond class, our academics have an open door policy which means not only will they know you by name, they'll actively mentor your progress.

*2008 Student to Teacher Ratio, Universities Australia.





4 **Five star teaching quality***
Star quality that transfers directly to you

Bond University's teaching faculty includes pre-eminent academics of national and international standing. Their high level qualifications are matched with practical knowledge and industry relevance gained from consulting to major multinational corporations all over the world. All of which puts you and your career aspirations in good stead.

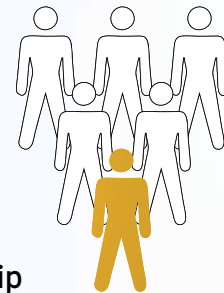
*2012 Good Universities Guide.





5 Who's with me?

Preparing you for leadership



Part of Bond University's unique approach is to help you develop a strong foundation of key leadership attributes that will help prepare you for career success, regardless of which field of study you choose. As such, our teaching philosophy prepares you with the following intellectual qualities:

- **Communication Skills**
- **Knowledge and Critical Thinking**
- **Leadership, Initiative and Teamwork**
- **Responsibility and Ethics**

The importance Bond places on imbuing these attributes in our students has resulted in our graduates being first choice for many blue chip employers, as well as being prepared for rapid career progression. Bond sets you up to succeed.



6

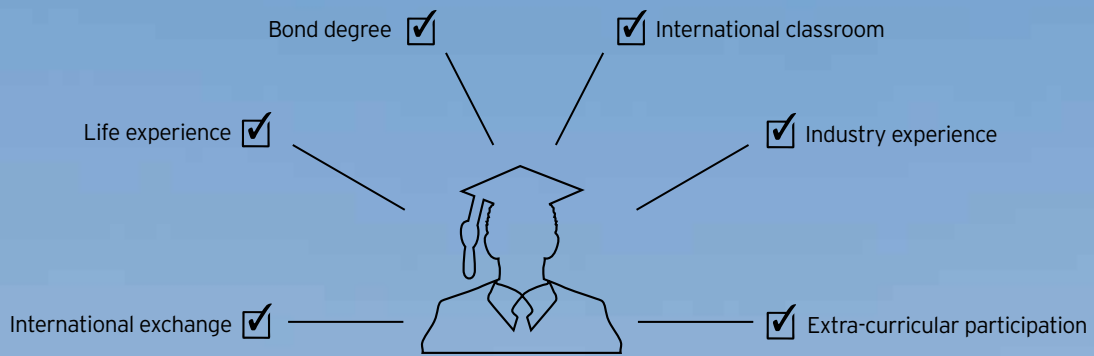
World-class facilities

And you actually get to use them

At Bond, not only do we offer you the very best state-of-the-art facilities, we offer you unprecedented access to them. Our smaller student to staff ratios extend to student to facilities ratios as well. This means you get to apply your profession as you learn it, in environments far more akin to the real thing. The result of this is confidence that you're as well prepared to enter your profession as you can be.







7 Graduate better prepared

Gain practical experience through Bond's connections

Bond University is committed to ensuring its graduates are ready to hit the ground running through practical case studies and internships with Bond's network of blue chip industry partners and affiliates. These include Macquarie Group Limited, Clayton Utz, KPMG, JBWere, Marriott International and Mirvac to name a few.

Add to this our personalised service and professional support from our Career Development Centre and you have a leading edge in the employment stakes.





8

Work wherever you wish

Globally focused course content

Australian in character yet international in perspective, Bond University not only delivers globally focused course content, but a world of cultural enrichment as well. Combine this with Bond's international industry partnerships, academic exchange partners and extensive global alumni network, and you'll be professionally and culturally set up to work anywhere in the world.





9

The university experience of your life

Enjoy a great social life on campus with over 70 sporting and social clubs

With so many students residing on campus, Bond has a real community feel and a vibrant student social life. From sporting, social and special interest clubs, the many cafés and a full calendar of events and gatherings, there's so much to enjoy. Add the Gold Coast lifestyle and Bond equals a truly fantastic student experience.





10

There's no such thing as a 'foreign' country

Join the global Bondy alumni network

Bond University has a distinctly global perspective, aspiring to a 50 : 50 ratio of Australian to international students. Our international students come from over 80 countries, evenly weighted so that no nationality dominates, to ensure a balanced classroom. The Bond global alumni network is active in over 120 countries around the world, so you'll be connected practically anywhere your ambition may take you.

STUDYING AT BOND

Bond University offers three semesters a year, allowing you to complete your studies much earlier than at other universities. For instance, a standard bachelor's degree that takes three years with the normal two-semester-per-year timetable, can be completed in only two years at Bond.

This accelerated study mode, combined with the flexibility of our cross-faculty subject offerings, gives you the opportunity to tailor your degree studies to suit your specific career goals or enhance your employability by gaining extra qualifications.

UNDERGRADUATE STUDY

Applicants who have not previously studied at university would normally enrol in a bachelor's degree. These undergraduate study programs typically comprise 24 subjects which can be completed in six semesters by undertaking a full-time load of four subjects per semester. Some undergraduate degrees are slightly longer, such as the Bachelor of Laws (32 subjects over eight semesters) and the Bachelor of Medicine Bachelor of Surgery (15 semesters).

UNIVERSITY CORE SUBJECTS

At Bond University, we recognise that people have many careers throughout their lives where they require the soft skills to problem solve and apply their education to a variety of occupations. As a result, in every undergraduate degree (except the Bachelor of Medicine Bachelor of Surgery), students must complete the four University core subjects with one selected from each of the following groups:

Communication Skills

Communicate effectively in writing, speaking and visual modes. Understand the nature of communication processes and the sources of difficulty in communication.

Your choice of one of the following:

- Communication Skills
- Public Speaking: Presentation Skills for Leaders

Knowledge and Critical Thinking

Work effectively with contemporary information technology and critically evaluate the current and future role of computing technology in the storage, retrieval and processing of information.

Your choice of one of the following:

- Business Applications of Information Technology
- Knowledge and Society
- Reasoning Skills
- Scientific Thinking and Research Skills

Leadership, Initiative and Teamwork

Appreciate the natural, dynamic and strategic positioning of organisations within their environments and appreciate the nature of effective work in groups.

Your choice of one of the following:

- Entrepreneurship
- Strategic Management

Responsibility and Ethics

Appreciate the foundation of moral, ethical and social theories and their relevance to issues of public concern and debate. Use theoretical ideas in formulating arguments about how particular issues should be resolved.

Your choice of one of the following:

- Contemporary Issues in Law and Society
- Cultural and Ethical Values

FOUNDATION SUBJECTS

Most degrees include a specified number of foundation subjects which all students must complete, regardless of their chosen major or specialisation.

ELECTIVE SUBJECTS

Some degrees also allow you to choose elective subjects, either from the host faculty or from any other faculty in the University.



MAJORS / SPECIALISATIONS

A major is a grouping of subjects (usually six) in a particular discipline that allows students to focus on a specialisation. Some degree programs also allow for a double major comprising 12 subjects in a given discipline.

COMBINED DEGREES

Bond University offers a range of combined degrees. These include:

- Bachelor of Arts / Bachelor of Laws
- Bachelor of Biomedical Science / Bachelor of Laws
- Bachelor of Business / Bachelor of Commerce
- Bachelor of Business / Bachelor of Information Technology
- Bachelor of Business / Bachelor of Laws
- Bachelor of Business / Bachelor of Social Science
- Bachelor of Commerce / Bachelor of Laws
- Bachelor of Communication / Bachelor of Laws
- Bachelor of International Relations / Bachelor of Laws
- Bachelor of Journalism / Bachelor of Laws
- Bachelor of Property and Sustainable Development / Bachelor of Laws
- Bachelor of Social Science (Psychology) / Bachelor of Laws

Combined degrees in other combinations are available conditional upon subject availability*.

HONOURS DEGREES

An honours degree is usually two or three semesters of additional coursework, seminars and supervised research taken after a bachelor's degree. It advances students' knowledge and experience and helps prepare them for future research work and higher degree programs.

A high level of achievement in an undergraduate course is a prerequisite of entry into an honours degree program. Honours degrees are available in selected programs within the faculties of Health Sciences & Medicine, Humanities & Social Sciences, and Law**.

HIGHER LEVEL DEGREES

Our fast-tracked timetable enables you to complete most bachelor's degrees in two years and a master's degree in one year. Should you wish to continue studying, you can gain a higher level qualification in the same time it will take students at most other universities to complete a bachelor's degree.

STUDY SCHEDULE

Most students undertake four subjects per semester[^] (equivalent to 40 credit points). You may however, enrol in fewer subjects and extend your degree over a longer period^{^^}. Bond's teaching methodology involves a combination of lectures, tutorials, seminars, examinations, projects, presentations, assignments, computer labs and industry projects.

[^]Australian students enrolled in at least three subjects may be eligible to claim Austudy benefits.

^{^^}Not available for the Bachelor of Medicine Bachelor of Surgery.

*Not available for all programs.

**Outstanding Law graduates may qualify to receive their degree with Honours. Refer to page 80 for more details.

PATHWAYS INTO BOND UNIVERSITY

If you do not meet the stated academic requirements for direct entry into an undergraduate degree program, Bond College offers an alternative pathway.

BOND COLLEGE

BOND COLLEGE FOUNDATION PROGRAM

Duration: 7 months (2 semesters)

Starting: January, May, September

The Bond College Foundation Program provides a pathway for both Australian and international students to meet the entry requirements to Bond University. This program is open to those that have completed Year 11 or equivalent, or who have commensurate work experience.

Bond College is located on the University campus and gives you a taste of university life as you gain a head start on your tertiary studies.

Bond College's intakes in January, May and September coincide with the University's timetable, allowing you to move straight into your program of choice upon completion of the Foundation Program.

If you successfully complete the Foundation Program you will be guaranteed a place in most degrees at Bond University. This does not include the Bachelor of Medicine Bachelor of Surgery or the Bachelor of Architectural Studies. Please refer to the individual entry requirements of each degree on pages 39 to 97 for more information.

PATHWAY TO BOND UNIVERSITY VIA BOND COLLEGE FOUNDATION PROGRAM



Note: There is no pathway into Bachelor of Medicine Bachelor of Surgery from Bond College.

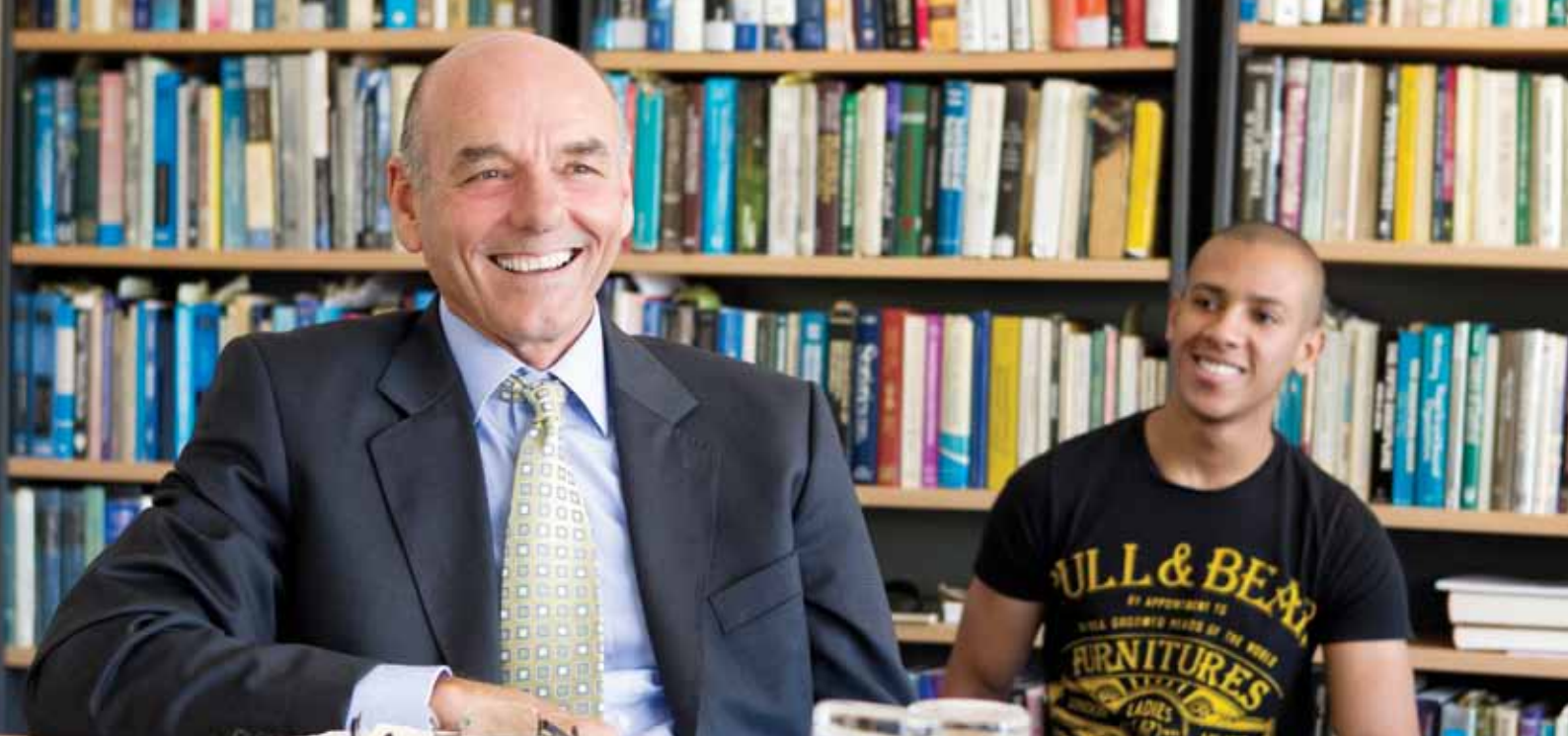


WHERE WILL YOUR DEGREE TAKE YOU?

There's a lot to consider when deciding what you will study and knowing where your degree will take you after you graduate is very important. Use this index to explore your study options based on your career interests. Look up an area that interests you and discover which degrees can help you get there.

BUSINESS AND COMMERCE		Page
 <p>For careers relating to accounting, finance, advertising, marketing, sports management, public relations, economics, international business, entrepreneurship, international relations, tourism and hotel and resort management.</p>	Bachelor of Arts	68
	Bachelor of Business	40
	Bachelor of Business Law	83
	Bachelor of Business Systems	44
	Bachelor of Commerce	41
	Bachelor of Communication	62
	Bachelor of International Hotel and Resort Management	42
	Bachelor of International Relations	69
	Bachelor of Sports Management	55
	Bachelor of Tourism Management	43

COMMUNICATION AND MEDIA		Page
 <p>For careers relating to advertising, film and television, computer game development, communication and media, journalism, marketing and public relations.</p>	Associate Degree	67
	Bachelor of Arts	68
	Bachelor of Business (Marketing Communication)	40
	Bachelor of Communication	62
	Bachelor of Computer Games	63
	Bachelor of Film and Television	64
	Bachelor of Journalism	65
	Bachelor of Multimedia Design (Advertising)	66
	Bachelor of Multimedia Design (Mass Communication)	66
	Bachelor of Multimedia Design (Production)	66




INFORMATION TECHNOLOGY		Page
 <p>For careers relating to information systems, networking, project management, software development, multimedia design and information technology.</p>	Bachelor of Business (Business Information Systems)	40
	Bachelor of Business Systems	44
	Bachelor of Computer Games	63
	Bachelor of Information Technology	45
	Bachelor of Multimedia Design (Advertising)	66
	Bachelor of Multimedia Design (Mass Communication)	66
	Bachelor of Multimedia Design (Production)	66

HEALTH SCIENCES AND MEDICINE		Page
 <p>For careers relating to sports science, counselling, behaviour management, health sciences, biomedical science, forensic science, medicine, psychology and sports management.</p>	Bachelor of Arts	68
	Bachelor of Behaviour Management	71
	Bachelor of Biomedical Science	50
	Bachelor of Biomedical Science with Honours	53
	Bachelor of Counselling	72
	Bachelor of Exercise Science	51
	Bachelor of Exercise Science with Honours	53
	Bachelor of Forensic Science	52
	Bachelor of Forensic Science with Honours	53
	Bachelor of Health Sciences	53
	Bachelor of Health Sciences (Honours)	53
	Bachelor of Medicine / Bachelor of Surgery (MBBS)	57
	Bachelor of Medical Laboratory Science	54
	Bachelor of Medical Laboratory Science with Honours	53
	Bachelor of Social Science	73
	Bachelor of Social Science (Psychology)	75
	Bachelor of Social Science (Psychology) (with Honours)	76
	Bachelor of Sports Management	55
	Bachelor of Sports Management with Honours	53
	Bachelor of Sports Science	56
Bachelor of Sports Science with Honours	53	



HUMANITIES, LANGUAGES AND INTERNATIONAL STUDIES		Page
 <p>For careers relating to applied linguistics, Australian studies, language and culture, international relations, foreign correspondence, politics, international trade law and philosophy.</p>	Bachelor of Arts	68
	Bachelor of Business (International Business)	40
	Bachelor of Communication	62
	Bachelor of International Relations	69
	Graduate Certificate in Language	70

LAW, CRIMINOLOGY AND CRIMINAL JUSTICE		Page
 <p>For careers relating to advocacy, behaviour management, dispute resolution, business law, criminology, corporate and commercial law, forensics, international trade law, jurisprudence, law, legal science and philosophy.</p>	Bachelor of Arts	68
	Bachelor of Behaviour Management	71
	Bachelor of Business Law	83
	Bachelor of Forensic Science	52
	Bachelor of Jurisprudence	84
	Bachelor of Laws	80
	Bachelor of Social Science	73
	Bachelor of Social Science (Criminology)	74

PROPERTY AND SUSTAINABLE DEVELOPMENT		Page
 <p>For careers relating to architectural studies, real estate, property and sustainable development, urban design and planning, environmental management, property valuation and environmental science.</p>	Associate Degree in Real Estate	88
	Associate Degree in Sustainable Development	89
	Bachelor of Architectural Studies	96
	Bachelor of Environmental Management (Sustainable Development)	91
	Bachelor of Environmental Science (Sustainability Science)	92
	Bachelor of Property and Sustainable Development	93
	Bachelor of Urban Design and Planning	95

PSYCHOLOGY, COUNSELLING AND BEHAVIOUR MANAGEMENT		Page
 <p>For careers relating to counselling, behaviour management and psychology.</p>	Bachelor of Arts	68
	Bachelor of Behaviour Management	71
	Bachelor of Counselling	72
	Bachelor of Social Science	73
	Bachelor of Social Science (Psychology)	75
	Bachelor of Social Science (Psychology) (with Honours)	76





FACULTY OF BUSINESS

Bond University's Faculty of Business is dedicated to building tomorrow's business leaders, one by one.

The Faculty has earned a reputation as one of Australia's leading educational and research centres. All courses have a strong practical focus, and are taught by world class academics with extensive industry experience. With flexible degree programs in a variety of fields, you will be primed to take on the corporate world one business deal at a time.

Schools within the Faculty of Business include:

- School of Business - www.bond.edu.au/bus
- School of Hotel, Resort and Tourism Management - www.bond.edu.au/hrtm
- School of Information Technology - www.bond.edu.au/it

INDUSTRY PARTNERS

The Faculty has developed industry partnerships with leading organisations including:

- Gold Coast Convention and Exhibition Centre
- IBM
- KPMG
- Macquarie Group
- Marriott International
- Microsoft
- Queensland Affordable Housing Consortium
- Radisson Hotel
- RBS Morgan
- Suncorp
- Wyndham Vacations



FACULTY FACILITIES

Created in collaboration with the Macquarie Group, the Macquarie Trading Room is a state-of-the-art facility which gives you access to market information through internal and external tickers, and dual screen technology displaying streamed data. It allows lecturers to set up simulated trading environments and adjust the market conditions to demonstrate different market situations and theories. You will gain practical experience in executing deals and managing portfolios, with trading conditions almost identical to those encountered by seasoned financial traders around the world.

SCHOOL OF BUSINESS

BACHELOR OF BUSINESS

Duration: 2 years full-time (6 semesters)

Starting: January, May, September

ENTRY REQUIREMENTS

Successful completion of Year 12 or equivalent, or Bond College certificate.

PROGRAM DESCRIPTION

The Bachelor of Business provides you with the knowledge to do business around the world. Equipped with practical experience and tailored majors, graduates are prepared for professional and managerial corporate roles.

PROGRAM STRUCTURE

University Core Subjects (4)

Refer to page 30

Foundation Subjects (7)

- Business Law
- Business Statistics
- Information Systems in Business
- Introduction to Accounting
- Marketing
- Organisational Behaviour
- Principles of Economics

Advanced Discipline Subjects (4)

You must complete the following subject:

- Business Plan Development

Plus three subjects from the following:

- Cost Management Systems
- Human Resource Management
- Introduction to Finance
- Introduction to International Business
- Market Research and Analysis
- Operations and Supply Chain Management

Majors (5)

You must complete five subjects from one of the following approved majors:

- Business Information Systems
- Entrepreneurship
- International Business
- Management
- Marketing
- Marketing Communication

Elective Subjects (4)

Four subjects may be selected from any faculty or the Institute of Sustainable Development & Architecture. You are encouraged to undertake additional subjects from the majors offered in the Bachelor of Commerce and the Bachelor of Business, in consultation with your Program Advisor.

PROFESSIONAL OUTCOMES

The Bachelor of Business is a broad-based qualification accepted by leading employers in a wide range of corporate disciplines. Potential career pathways include:

- Advertising
- Brand and product management
- Business management
- Communications and information management
- Market research
- Strategic planning

PROFESSIONAL RECOGNITION

- Australian Institute of Management
- Australian Marketing Institute

POPULAR COMBINED DEGREES

- Bachelor of Business / Bachelor of Commerce
- Bachelor of Business / Bachelor of Information Technology
- Bachelor of Business / Bachelor of International Hotel and Resort Management
- Bachelor of Business / Bachelor of Laws

Bede Schubert

Bachelor of Commerce (Majors in Finance and Economics) - Student

“Bond has a great reputation in the business world and the practical nature of much of the coursework has helped me tremendously in some extremely technical interviews and work situations.

In my degree I undertook an internship at Kinetic Group which was very beneficial. Being a Bond student has helped me stand out in a very competitive graduate market and has consequently helped me secure a graduate position as a Strategy Consultant with Deloitte Consulting.”



BACHELOR OF COMMERCE

Duration: 2 years full-time (6 semesters)

Starting: January, May, September

ENTRY REQUIREMENTS

Successful completion of Year 12 or equivalent, or Bond College certificate.

PROGRAM DESCRIPTION

The Bachelor of Commerce is specifically designed to prepare you for professional careers in finance, accounting and business economics. You will be exposed to real life scenarios with facilities including the Macquarie Trading Room and the latest financial software.

PROGRAM STRUCTURE

University Core Subjects (4)

Refer to page 30

Foundation Subjects (8)

- Business Law
- Business Mathematics*
- Cost Management Systems or Financial Applications and Quantitative Analysis
- Econometrics
- Fundamentals of Finance
- Introduction to Accounting
- Marketing
- Principles of Economics

Majors (6)

You must complete six subjects from one of the following subject areas:

- Accounting (seven subjects required for accreditation with the professional accounting bodies)
- Business Economics
- Finance

Elective Subjects (6)

Six subjects may be selected from any faculty or the Institute of Sustainable Development & Architecture. You are encouraged to undertake a second major from the majors offered in the Bachelor of Commerce and the Bachelor of Business, in consultation with your Program Advisor.

PROFESSIONAL OUTCOMES

The Bachelor of Commerce is accepted around the world by leading employers in areas relating to the commercial sector and private practice. Potential career pathways include:

- Accountant
- Economist
- Investment banker
- Merchant banker
- Policy advisor
- Stockbroker

PROFESSIONAL RECOGNITION

- Australian Securities and Investment Commission RG 146 compliance (Training of financial product advisers)**
- CPA Australia
- Financial Services Institute of Australia
- Institute of Chartered Accountants in Australia
- Institute of Public Accountants

POPULAR COMBINED DEGREES

- Bachelor of Commerce / Bachelor of Laws
- Bachelor of Commerce / Bachelor of Business

*Students are encouraged to test their readiness to enrol in Business Mathematics by undertaking a sample test available on the Bond website. Students requiring additional foundation in mathematics are encouraged to undertake Elementary Mathematics prior to Business Mathematics.

**Students must complete FINCI2-200 Fundamentals of Finance and FINCI3-308 Personal Finance if they wish to meet the RG 146 compliance.

Sanchez Graham

Bachelor of International Hotel and Resort Management - Student

“I chose to study at Bond because of the accelerated program and extensive exposure offered to industry professionals throughout the degree.

During my studies I have undertaken work experience at the Gold Coast Convention and Exhibition Centre as Event Assistant. As part of my course requirements, I am currently working at the Radisson Resort Gold Coast in Front Office as Guest Services Representative.

Upon graduating I hope to secure a revenue management position with a leading international hotel chain that will enable me to travel around the world.”



BIHRM
Student

SCHOOL OF HOTEL, RESORT AND TOURISM MANAGEMENT

BACHELOR OF INTERNATIONAL HOTEL AND RESORT MANAGEMENT

Duration: 2 years full-time (6 semesters)

Starting: January, May, September

ENTRY REQUIREMENTS

Successful completion of Year 12 or equivalent, or Bond College certificate.

PROGRAM DESCRIPTION

The Bachelor of International Hotel and Resort Management prepares you for professional and managerial roles in the global hotel and resort industry. You will be required to complete a suite of business subjects. Backed and delivered by leaders in industry, the curriculum is guided by Industry Advisory Boards comprised of influential hotel, resort and tourism professionals.

PROGRAM STRUCTURE

University Core Subjects (4)

Refer to page 30

Foundation Subjects (6)

- Business Law
- Human Resource Management
- Introduction to Accounting
- Introduction to Finance
- Marketing
- Organisational Behaviour

Advanced Discipline Subjects (11)

- Hotel and Tourism Strategic Management
- Hotel Facilities, Development and Design
- International Food and Beverage Management
- Introduction to Hospitality and Tourism Management
- Risk Management in Tourism
- Rooms Division Management
- Strategic Pricing and Revenue Management
- Sustainable Tourism

- Tourism and Hospitality Economics
- Capstone Project I
- Capstone Project II

Elective Subjects / Major (3)

You will have a choice of completing the degree program including three general electives or completing the degree with a major in Revenue Management or Event Management.

> Revenue Management

To graduate with a major in Revenue Management, you must complete the following additional subjects:

- Business and Spreadsheet Modelling*
- Business Statistics
- Cost Management Systems

> Event Management

To graduate with a major in Event Management, you must complete the following additional subjects:

- Business Events Management
- Event Marketing and Sponsorship
- Event Personnel and Customer Service Delivery

Due to the need for industry experience prior to graduation, you will be required to work 400 hours in a relevant organisation as a graduation requirement.

PROFESSIONAL OUTCOMES

The Bachelor of International Hotel and Resort Management is a qualification accepted around the world by leading hotel and resort employers. Potential career pathways include:

- Hotel and resort human resources management
- Hotel and resort marketing
- Hotel and resort operations
- Hotel and resort revenue management

POPULAR COMBINED DEGREES

- Bachelor of Business / Bachelor of International Hotel and Resort Management

*Or an alternative subject as advised by the Program Advisor.



BACHELOR OF TOURISM MANAGEMENT

Duration: 2 years full-time (6 semesters)

Starting: January, May, September

ENTRY REQUIREMENTS

Successful completion of Year 12 or equivalent, or Bond College certificate.

PROGRAM DESCRIPTION

The Bachelor of Tourism Management provides you with the theoretical knowledge and practical experience to take on managerial roles within the global tourism industry. You can major in Event Management or Revenue Management to provide you with the skills to be at the forefront of your chosen field. Backed and delivered by leaders in industry, the curriculum is guided by Industry Advisory Boards comprised of influential tourism professionals.

PROGRAM STRUCTURE

University Core Subjects (4)

Refer to page 30

Foundation Subjects (6)

- Business Law
- Event Management
- Human Resource Management
- Introduction to Accounting
- Marketing
- Organisational Behaviour

Advanced Discipline Subjects (9)

- Global Tourism Systems
- Hotel and Tourism Strategic Management
- Introduction to Hospitality and Tourism Management
- Risk Management in Tourism
- Sustainable Tourism
- Tourism and Hospitality Economics
- Tourism Planning and Development
- Capstone Project I
- Capstone Project II

Elective Subjects (5)

You will have a choice of completing the degree program including three general electives or completing the degree with a major in Revenue Management or Event Management.

> Revenue Management

To graduate with a major in Revenue Management, you must complete the following additional subjects:

- Business and Spreadsheet Modelling*
- Business Statistics
- Cost Management Systems

> Event Management

To graduate with a major in Event Management, you must complete the following additional subjects:

- Business Events Management
- Event Marketing and Sponsorship
- Event Personnel and Customer Service Delivery

Due to the need for industry experience prior to graduation, you will be required to work 400 hours in a relevant organisation as a graduation requirement.

PROFESSIONAL OUTCOMES

The Bachelor of Tourism Management program is a qualification accepted globally by leading tourism organisations. Potential career pathways include:

- Event management
- Tourism human resource management
- Tourism marketing
- Tourism operations
- Tourism planning and development



SCHOOL OF INFORMATION TECHNOLOGY

BACHELOR OF BUSINESS SYSTEMS

Duration: 2 years full-time (6 semesters)

Starting: January, May, September

ENTRY REQUIREMENTS

Successful completion of Year 12 or equivalent, or Bond College certificate.

PROGRAM DESCRIPTION

The Bachelor of Business Systems program equips you with the skills to take on a range of careers as senior managers or planners in information-rich and process-oriented organisations. You will learn core financial, business systems and technology management skills and then select either the commercial or managerial stream to hone your skills.

PROGRAM STRUCTURE*

University Core Subjects (4)

Refer to page 30

IT Subjects (3)

- Analysing and Designing Information Systems
- Database Management
- Systems Design

Capstone (1)

- IT Capstone Project

IT Optional Subjects (6)

You must complete six subjects from the following:

- Business Intelligence and Data Warehousing
- Business Processes / IT Operations
- Business Systems and Processes
- Computational Finance
- E-Business
- Security and Assurance
- Strategic IS Management
- Systems Thinking

Business Subjects (8)

You must choose either the Commercial or Managerial stream:

> Commercial Stream**

You must complete the following seven subjects:

- Business Law
- Business Maths
- Cost Management Systems
- Econometrics
- Fundamentals of Finance
- Introduction to Accounting
- Principles of Economics

Plus one subject from the following:

- Accounting Theory and Application
- Auditing
- Financial Accounting and Company Reporting
- Managerial Planning and Control

> Managerial Stream**

You must complete the following two subjects:

- Concepts of Strategy
- Entrepreneurial Growth

Plus six from the following:

- Business Plan Development
- Cross-cultural Management
- Introduction to Accounting
- Introduction to Finance
- Managing Projects
- Marketing
- Negotiation
- Organisational Behaviour
- Principles of Economics
- Venture Capital and Private Equity

General Elective Subjects (2)

A further two subjects may be selected from the undergraduate subjects offered by any faculty or the Institute of Sustainable Development & Architecture.



PROFESSIONAL OUTCOMES

You will have the knowledge and skills that support a number of initial career options including roles such as:

- Business analyst
- Project manager
- Business strategist
- Systems designer

Graduates will also evolve with developing experience and the program will help underpin career tracks leading to:

- Chief information officer
- Chief operating officer

PROFESSIONAL RECOGNITION

The Bachelor of Business Systems is accredited at the Professional level by the Australian Computer Society.

*Subject names and structure may change - please refer to www.bond.edu.au for updated information on program structure.

**Prerequisite requirements may apply for certain subjects. Students considering the Commercial Stream should ensure they undertake CORE11-130 Strategic Management as part of the core requirements. Students considering the Managerial Stream should ensure they undertake CORE11-131 Entrepreneurship as part of the core requirements to meet prerequisite requirements within the major.

BACHELOR OF INFORMATION TECHNOLOGY

Duration: 2 years full-time (6 semesters)

Starting: January, May, September

ENTRY REQUIREMENTS

Successful completion of Year 12 or equivalent, or Bond College certificate.

PROGRAM DESCRIPTION

The Bachelor of Information Technology equips you for a professional career within the Information Technology (IT) industry or within IT-intensive organisations including government departments and businesses. You will undertake an intensive core skills program, followed by a specialist major in Information Systems, IT Management, Infrastructure, Mobile Applications, Security and Dependable Systems, Software Systems and Web Engineering.

PROGRAM STRUCTURE*

University Core Subjects (4)

Refer to page 30

Foundation Subjects (7)

- Analysing and Designing Information Systems
- Analytical Toolkit
- Database Management
- Introduction to Programming
- Managing Projects
- Networks and Applications
- Web Applications

Capstone (1)

- IT Capstone Project

Christie Percival

Bachelor of Information Technology - Student

“ I chose to study at Bond because of their fast-tracked programs. I wanted to complete my degree before turning 20, which wouldn't have been possible at any other university. I love every aspect of my Bond degree, but the small class sizes are what I enjoy the most. I have never been in a lecture of more than 20 people in an Information Technology class, which makes the teaching environment much more personal.

Due to my success in my degree, I gained placement in the Deloitte graduate program in the Consulting - Technology service line and was able to start before I even finished my degree. I endeavour to further my career in IT consultancy at Deloitte as it embraces my passion for the ideas behind technology. ”



Majors (5)

Five subjects selected from one of the following majors:

- Information Systems
- IT Management
- Infrastructure
- Mobile Applications
- Security and Dependable Systems
- Software Systems
- Web Engineering

IT Elective Subjects (5)

You must take a further five undergraduate subjects offered by the School of Information Technology. You are encouraged to select these subjects to enable completion of a second major.

General Elective Subjects (2)

A further two subjects may be selected from the undergraduate subjects offered from any faculty or the Institute of Sustainable Development & Architecture.

PROFESSIONAL OUTCOMES

This degree will provide you with the knowledge and skills essential to become a multi-skilled IT professional. You will be capable of contributing at a high level, working in areas spanning technology development through to strategic planning and business process management and modelling. Potential career pathways include:

- Business consulting
- IT educator
- Network applications developer
- Process and client manager
- Project leader
- Researcher
- Software engineer
- Solutions and enterprise architect
- Systems and business analyst

PROFESSIONAL RECOGNITION

The Bachelor of Information Technology is accredited at the Professional level by the Australian Computer Society.

POPULAR COMBINED DEGREES

- Bachelor of Business / Bachelor of Information Technology
- Bachelor of Commerce / Bachelor of Information Technology

*Subject names and structure may change - please refer to www.bond.edu.au for updated information on program structure.



DELATED	LAST	HIGH	LOW
MGC. AX	58.50	59.70	57.95
TLS. AX	4.64	4.66	4.59
TOL. AX	10.61	10.72	10.46
WBC. AX	23.63	24.05	23.45
WDC. AX	18.40	18.38	18.25
WES. AX	37.25	38.28	36.11
WOW. AX	28.02	28.47	27.45
WPL. AX	47.53	47.9	45.54
ZFX. AX	9.59		

DELATED	LAST
AORD	5654.90
AFLI	408.7
AXJO	34.2
SPX	1111.1



FACULTY OF HEALTH SCIENCES & MEDICINE

The Faculty of Health Sciences & Medicine is dedicated to shaping professionals who are distinguished by their superior scientific clinical skills, ethics, compassion and humanity.

The Faculty focuses on workplace learning with our professional courses offering opportunities in a wide range of settings to ensure that theory is informed by practice. We also strive to ensure our students are aware of the needs of prospective employers.

Schools within the Faculty of Health Sciences & Medicine include:

- School of Health Sciences - www.bond.edu.au/health-sciences
- School of Medicine - www.bond.edu.au/medicine

INDUSTRY PARTNERS

The Faculty has developed industry partnerships with leading organisations including:

- Australian Institute of Sport
- Beach Volleyball Gold Coast
- BMD Northcliffe Surf Lifesaving Club
- Gold Coast Suns
- Gold Coast Titans
- Queensland Rugby Union and the St. George Reds
- Southport Sharks



FACULTY FACILITIES

Bond University's Faculty of Health Sciences & Medicine encompasses several state-of-the-art laboratories, teaching facilities and research spaces incorporating the latest technology and industry standard equipment.

- Anatomy Laboratory
- Bond University Clinical Education & Research Centre
- Clinical Skills Rooms
- Gregor Heiner Lecture Theatre
- Pathology Museum
- Physiotherapy Laboratory
- Science Laboratory
- Sports Science Laboratories
- Teaching Laboratories



SCHOOL OF HEALTH SCIENCES

BACHELOR OF BIOMEDICAL SCIENCE

Duration: 2 years full-time (6 semesters)

Starting: January, May, September

ENTRY REQUIREMENTS

Successful completion of Year 12, Bond College certificate (minimum 65 per cent average) or equivalent with successful completion and evidence of a passing grade in English, Maths B and Chemistry (students without the equivalent of Year 12 Chemistry or Maths B will be required to successfully complete bridging subject/s in those disciplines*). Pathways are available for applicants who do not meet the standard subject entry requirements.

PROGRAM DESCRIPTION

The Bachelor of Biomedical Science provides you with the opportunity to acquire outstanding technical skills in our state-of-the-art laboratories. This program develops your knowledge in the molecular, cellular, anatomical and physiological processes of the human body. Extensive laboratory training and problem solving exercises, together with a case study approach to teaching, demonstrates the applications of biomedical science within a variety of clinical, research and allied healthcare settings. You will also have access to internship / work experience opportunities with a wide range of organisations. Bond students have completed placements at Queensland Medical Limited (QML) Pathology, Sullivan Nicolaides Pathology, John Flynn Hospital, Gribbles Pathology and pharmaBank.

PROGRAM STRUCTURE**

University Core Subjects (4)

Refer to page 30

Compulsory Subjects (19)

- Cardiovascular, Renal and Respiratory Physiology
- Cell Biology
- Chemistry
- Gastrointestinal, Endocrine and Reproductive Physiology
- Human Anatomy I
- Human Anatomy II

- Human Biology
- Human Lifespan Development
- Human Nutrition
- Immunology
- Medical Chemistry I
- Medical Chemistry II
- Medical and Molecular Genetics
- Microbiology
- Molecular Diagnostics
- Neuromuscular Physiology
- Pathology
- Pharmacology
- Research Methods in Science

Elective Subject (1)

Choose from one of the following:

- Internship in Health Sciences
- Nutrition and Health
- Faculty approved elective

PROFESSIONAL OUTCOMES

The broad scope of the Biomedical Science degree ideally positions graduates to enter a wide range of professions in industries that may include:

- Biotechnology industries
- Pharmaceutical industries
- Diagnostic industries
- Hospital laboratories
- Medical devices
- Veterinary / animal health
- Health administration

You may also pursue biomedical research opportunities within universities, government and privately-owned research institutes.

POPULAR COMBINED DEGREE

- Bachelor of Biomedical Science / Bachelor of Laws

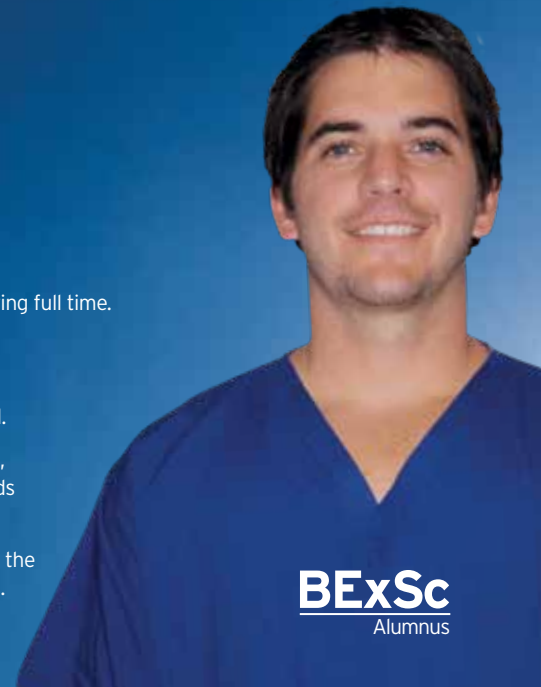
*Students required to undertake bridging subjects in one or both disciplines (for example Introduction to Chemistry and / or Elementary Maths) would usually do so in their first semester however, completion of this program will take longer than six semesters.

**Subject names and structure may change - please refer to www.bond.edu.au for updated information on program structure.

Nick Pfeffer

Cardiac Physiologist - London Bridge Hospital & City Diagnostics, UK

- 2000 Commenced double degree in Exercise Science and Business at Griffith but deferred after two years.
- 2002 - 2006 Travelled through America, Canada, Pacific Islands and Asia, working in the surfing industry.
- 2007 Commenced Bachelor of Exercise Science at Bond University, working and studying full time.
- 2008 Undertook internship arranged by Bond in the Cardiology Department of Royal Brisbane and Women's Hospital.
Graduated with a Bachelor of Exercise Science in just two years of study at Bond.
- 2009 Secured position as full-time cardiac physiologist at the Gold Coast Heart Centre, responsible for all non-invasive cardiac investigations at John Flynn, Tweed Heads and Allamanda Hospitals.
- 2010 - 2012 Working at London Bridge Hospital, UK, in a dual role as a cardiac physiologist in the Cardiology Department and for their new telemedicine start-up, City Diagnostics.



BACHELOR OF EXERCISE SCIENCE

Duration: 2 years full-time (6 semesters)

Starting: January*

ENTRY REQUIREMENTS

Successful completion of Year 12, Bond College certificate (minimum 65 per cent average) or equivalent with successful completion and evidence of a passing grade in English, Maths B and Chemistry (students without the equivalent of Year 12 Chemistry or Maths B will be required to successfully complete bridging subject/s in those disciplines**). Pathways are available for applicants who do not meet the standard subject entry requirements.

PROGRAM DESCRIPTION

The Bachelor of Exercise Science provides you with a solid understanding of the basic clinical and applied sciences with the primary focus on how the body responds differently to various exercise doses. You will learn how to measure these differences in order to recommend optimal exercise doses in the treatment of diseases, such as cardiovascular conditions. Learning strategies include a mix of lectures, tutorials and practical sessions using problem solving, case studies and clinical reasoning. You will also have access to internship / work experience opportunities with a wide range of organisations. Bond students have completed placements at the Australian Institute of Sport, Cricket Australia Centre of Excellence, Gold Coast Hospital, Pindara Physiotherapy, Royal Brisbane and Women's Hospital, Cardiac Investigations Unit and the Queensland Institute of Medical Research.

Bond University's Bachelor of Exercise Science is also one of the preferred pathways for entry into Bond University's two-year Doctor of Physiotherapy program.

PROGRAM STRUCTURE[^]

University Core Subjects (4)

Refer to page 30

Compulsory Subjects (20)

- Biochemistry
- Biochemistry of Exercise
- Cardiovascular, Renal and Respiratory Physiology
- Cell Biology
- Chemistry
- Clinical Exercise Testing I
- Clinical Exercise Testing II
- Exercise Prescription and Practice I
- Human Anatomy I
- Human Anatomy II
- Human Biology
- Metabolic Diseases and Exercise
- Motor Learning and Skill Acquisition
- Neuromuscular Physiology
- Pharmacology
- Physiological Principles of Rehabilitation
- Physiology of Exercise I
- Physiology of Exercise II
- Principles of Biomechanics
- Research Methods in Science

PROFESSIONAL OUTCOMES

The Bachelor of Exercise Science produces graduates with a strong understanding of human biology who are well placed to seek employment in a range of careers that may include:

- Cardiac technologist
- Sleep technician
- Respiratory technician
- Trainee sonographer
- Pharmaceutical representative

You may also have the opportunity to complete research-based Honours, Bachelor of Exercise Science (Honours), leading to a PhD or to continue study in graduate programs.

*Students may apply for May or September entry, however completion of this program may take longer than six semesters.

**Students required to undertake bridging subjects in one or both disciplines (for example Introduction to Chemistry and / or Elementary Maths) would usually do so in their first semester however, completion of this program will take longer than six semesters.

[^]Subject names and structure may change - please refer to www.bond.edu.au for updated information on program structure.

BACHELOR OF FORENSIC SCIENCE

Duration: 2 years full-time (6 semesters)

Starting: January*

ENTRY REQUIREMENTS

Successful completion of Year 12, Bond College certificate (minimum 65 per cent average) or equivalent with successful completion and evidence of a passing grade in English, Maths B and Chemistry (students without the equivalent of Year 12 Chemistry or Maths B will be required to successfully complete bridging subject/s in those disciplines**). Pathways are available for applicants who do not meet the standard subject entry requirements.

PROGRAM DESCRIPTION

The Bachelor of Forensic Science is taught by internationally renowned experts in DNA and forensic anthropology. The program exposes you to the essential elements of science (including anatomy, biology, chemistry and forensics), and relevant aspects of law. You will learn in a highly personalised environment and have access to state-of-the-art equipment including a DNA Extraction Robot and DNA Typing Instrument. Access to Bond's Legal Skills Centre will teach you how to provide expert forensic evidence in a real court setting. You will also have access to internship / work experience opportunities with a wide range of organisations.

PROGRAM STRUCTURE[^]

University Core Subjects (4)

Refer to page 30

Compulsory Subjects (19)

- Cell Biology
- Chemistry
- Forensic Anthropology
- Forensic Chemistry
- Forensic DNA Profiling
- Forensic Genetic Applications
- Forensic Statistics
- Forensics in the Courtroom

- Human Anatomy I
- Human Anatomy II
- Human Biology
- Human Osteology
- Introduction to Forensics
- Medical and Molecular Genetics
- Medical Chemistry I
- Microbial Forensics
- Molecular Biology
- Research Methods in Science
- The Australian Criminal Justice System

Elective Subject (1)

Choose from one of the following:

- Immunology
- Internship
- Approved elective

PROFESSIONAL OUTCOMES

The Bachelor of Forensic Science will provide you with specialised scientific skills, a thorough understanding of the methods and standards used in forensic laboratories and the legal framework within which this work must be carried out. Graduates can seek employment in a range of settings that may include:

- Crime scene police sections
- Legal areas dealing with civil and criminal scientific matters
- Specialised forensic areas such as forensic laboratories

You may also have the opportunity to complete research-based Honours, Bachelor of Forensic Science (Honours), leading to master's and PhD programs.

*Students may apply for May or September entry, however completion of this program will take longer than six semesters.

**Students required to undertake bridging subjects in one or both disciplines (for example Introduction to Chemistry and / or Elementary Maths) would usually do so in their first semester however, completion of this program will take longer than six semesters.

[^]Subject names and structure may change - please refer to www.bond.edu.au for updated information on program structure.



BACHELOR OF HEALTH SCIENCES*

Duration: 2 years full-time (6 semesters)

Starting: January, May, September

ENTRY REQUIREMENTS

Successful completion of Year 12 or equivalent, or Bond College certificate (minimum 65 per cent average) and evidence of a passing grade in English.

PROGRAM DESCRIPTION

The Bachelor of Health Sciences is designed for students who wish to explore a range of disciplines by undertaking studies across a broad range of subjects. You will have access to internship / work experience opportunities with a wide range of organisations. For those who did not complete Chemistry and Maths in high school, a pathway into this program is also available through Bond College.

DISCIPLINE AREAS

The degree offers study across a broad range of disciplines, which may include subjects in:

- Biomedical science
- Exercise science
- Forensic science
- Health sciences
- Sports science

PROFESSIONAL OUTCOMES

The Bachelor of Health Sciences ideally positions graduates to seek employment in a range of settings that may include:

- Clinical trials or drug registration
- Intellectual property
- Laboratory research
- Scientific publishing

Graduates also have the opportunity to complete research-based Honours, Bachelor of Health Sciences (Honours), leading to master's and PhD programs.

*Subject names and structure may change - please refer to www.bond.edu.au for updated information on program structure.

SCHOOL OF HEALTH SCIENCES HONOURS PROGRAM

Duration: 1 year full-time (3 semesters)

Starting: January

ENTRY REQUIREMENTS

Successful completion of a relevant undergraduate degree with admission based on satisfactory academic performance in undergraduate subjects related to the field of planned research.

PROGRAM DESCRIPTION

The Honours program is one year of independent research and study culminating in the production of a research thesis and presentation of a research seminar. You will undertake a program of coursework and research where you will conceptualise, plan, organise, undertake and report on an independent research project, while being supervised by a member of the academic staff.

DISCIPLINE AREAS

- Bachelor of Biomedical Science with Honours
- Bachelor of Exercise Science with Honours
- Bachelor of Forensic Science with Honours
- Bachelor of Health Sciences (Honours)
- Bachelor of Medical Laboratory Science with Honours
- Bachelor of Sports Management with Honours
- Bachelor of Sports Science with Honours

PROFESSIONAL OUTCOMES

The Honours program provides a pathway to postgraduate study, typically at the PhD level. You will also be well placed for employment in your discipline area (for example Exercise Science and Biomedical Science) as a subject professional in either the corporate sector or research community.



BACHELOR OF MEDICAL LABORATORY SCIENCE

Duration: 2 years full-time (6 semesters)*

Starting: January

ENTRY REQUIREMENTS

Successful completion of year 12 or equivalent or Bond College certificate (minimum 65 per cent average). Successful completion and evidence of passing grades in English, Maths B and Chemistry (students without the equivalent of Year 12 Chemistry or Maths B will be required to successfully complete bridging subject/s in those disciplines*). Pathways are available for applicants who do not meet the standard subject entry requirements.

PROGRAM DESCRIPTION

The Bachelor of Medical Laboratory Science is a specialist degree designed for students who wish to work in medical laboratories within hospitals or private diagnostic laboratories. Accreditation of this program is being sought with the Australian Institute of Medical Scientists (AIMS), which will increase employment opportunities within the diagnostics industry. Additionally, the program provides you with the opportunity to acquire outstanding technical skills in our state-of-the-art laboratories.

PROGRAM STRUCTURE**

University Core Subjects (4)

Refer to page 30

Compulsory Subjects (19)

- Cell Biology
- Chemistry
- Clinical Biochemistry
- Clinical Genetics
- Clinical Microbiology & Virology
- Clinical Professional Practice I
- Clinical Professional Practice II
- Haematology I
- Haematology II

- Histopathology and Cytopathology
- Human Biology
- Immunology
- Introduction to Laboratory Medicine
- Medical Chemistry I
- Medical Chemistry II
- Medical and Molecular Genetics
- Microbiology
- Molecular Diagnostics
- Transfusion Medicine

PROFESSIONAL OUTCOMES

The Bachelor of Medical Laboratory Science will equip you to seek employment in a range of settings that may include:

- Diagnostic laboratories
- Hospitals
- Pathology laboratories

Opportunities could also exist to specialise in fields such as:

- Immunology
- Microbiology
- Pathology

You may also have the opportunity to complete research-based Honours, Bachelor of Medical Laboratory Science (Honours), leading to a PhD.

*Students required to undertake bridging subjects in one or both disciplines (for example Introduction to Chemistry and / or Elementary Maths) would usually do so in their first semester however, completion of this program will take longer than six semesters.

**Subject names and structure may change - please refer to www.bond.edu.au for updated information on program structure.



BACHELOR OF SPORTS MANAGEMENT

Duration: 2 years full-time (6 semesters)

Starting: January, May, September

ENTRY REQUIREMENTS

Successful completion of Year 12 or equivalent, or Bond College certificate and evidence of a passing grade in English.

PROGRAM DESCRIPTION

The Bachelor of Sports Management is taught by leading experts in sport, law, business and public relations. This integrated program provides you with the necessary knowledge and skills to successfully work with sporting teams, clubs and players, and to manage events. You will also have access to internship / work experience opportunities with a wide range of organisations. Bond students have completed placements with AFL Queensland, Association of Surfing Professionals (ASP) International, Australian Sports Commission, Australian University Games, Billabong, Gold Coast Blaze, Gold Coast United, Gold Coast Turf Club, St. George Reds and Yachting Queensland.

PROGRAM STRUCTURE*

University Core Subjects (4)

Refer to page 30

Compulsory Subjects (19)

- Asset and Facilities Management
- Business Law
- Business Plan Development
- Club Management
- Event Management
- High Performance Sport Management
- Human Resource Management

- Managing Financial Resources in Sport
- Negotiation
- Organisational Behaviour
- Personal Finance
- Player Management
- Sport Management
- Sport Marketing
- Sport Organisation, Governance and Policy
- Sport Public Relations
- Sport Tourism
- Sports Law
- Venue Management

Elective Subject (1)

Choose one of the following:

- Professional Experience Sport Management
- Special Topic in Sports Management
- Faculty approved elective

PROFESSIONAL OUTCOMES

The Bachelor of Sports Management will position you to seek employment in a range of settings that may include:

- Amateur sport organisations
- Event management
- Player management
- Professional sport teams and leagues
- Recreational and leisure clubs
- Sport marketing firms
- Sporting goods organisations

You may also have the opportunity to complete research-based Honours, Bachelor of Sports Management (Honours), leading to a PhD or to continue study in graduate programs.

*Subject names and structure may change - please refer to www.bond.edu.au for updated information on program structure.



BACHELOR OF SPORTS SCIENCE

Duration: 2 years full-time (6 semesters)

Starting: January*

ENTRY REQUIREMENTS

Successful completion of Year 12, Bond College certificate (minimum 65 per cent average) or equivalent with successful completion and evidence of a passing grade in English, Maths B and Chemistry (students without the equivalent of Year 12 Chemistry or Maths B will be required to successfully complete bridging subject/s in those disciplines**). Pathways are available for applicants who do not meet the standard subject entry requirements.

PROGRAM DESCRIPTION

The Bachelor of Sports Science provides you with a solid understanding of the basic, clinical and applied sciences by which high performance athletes achieve greater results. Learning strategies include a mix of lectures, tutorials and practical sessions using problem solving, case studies and clinical reasoning.

You will also have access to internship / work experience opportunities with a wide range of organisations. Bond students have completed placements at the Australian Institute of Sport, Cricket Australia Centre of Excellence, Gold Coast Hospital, Pindara Physiotherapy, Royal Brisbane and Women's Hospital, Cardiac Investigations Unit and the Queensland Institute of Medical Research (QIMR). Bond University's Bachelor of Sports Science is a preferred pathway for entry into Bond University's one-year Master of High Performance Science program.

PROGRAM STRUCTURE[^]

University Core Subjects (4)

Refer to page 30

Compulsory Subjects (20)

- Biochemistry
- Biochemistry of Exercise
- Cardiovascular, Renal and Respiratory Physiology
- Cell Biology

- Chemistry
- Clinical Biomechanics
- Clinical Exercise Testing I
- High Performance Science I
- High Performance Science II
- Human Anatomy I
- Human Anatomy II
- Human Biology
- Motor Learning and Skill Acquisition
- Neuromuscular Physiology
- Pathophysiology of Injury and Repair
- Pharmacology
- Physiology of Exercise I
- Physiology of Exercise II
- Principles of Biomechanics
- Psychology of High Performance
- Research Methods in Science

PROFESSIONAL OUTCOMES

The Bachelor of Sports Science will position you to seek employment in a range of positions that may include:

- Assistant coach
- High performance coach
- Talent identification consultant
- Performance service advisor
- Elite program coordinator

You may also have the opportunity to complete research-based Honours, Bachelor of Sports Science (Honours), leading to a PhD or to continue study in graduate programs.

PROFESSIONAL RECOGNITION

The Bachelor of Sports Science has been accepted into the National Strength and Condition Association Education Recognition Program.

*Students may apply for May or September entry; however completion of this program may take longer than six semesters.

**Students required to undertake bridging subjects in one or both disciplines (for example Introduction to Chemistry and / or Elementary Maths) would usually do so in their first semester however, completion of this program will take longer than six semesters.

[^]Subject names and structure may change - please refer to www.bond.edu.au for updated information on program structure.

Edmond Kwan

Intern - Royal Melbourne Hospital

- 2004 Completed Year 12 at Brisbane's Anglican Church Grammar School with an OP1.
- 2005 Enrolled in Bond University's new undergraduate Bachelor of Medicine Bachelor of Surgery to fast-track his ambition of becoming a doctor.
- 2005-2009 Undertook numerous clinical placements in a wide range of medical fields, including cardiology-focused electives at the Centenary Institute in Sydney, Royal Prince Alfred Hospital and the Adventist Hospital in Hong Kong.
Assisted leading cardiologist, Professor Rohan Jayasinghe, and international forensic expert, Dr Angela Van Daal, on research into the genetic aspects of cardiovascular disease.
Engaged as Junior Research Coordinator in Cardiology at the Gold Coast Hospital.
- 2009 Graduated as part of Bond's inaugural MBBS cohort, qualifying as a doctor in less than five years.
- 2010 - 2012 Selected from 600 applicants Australia-wide to take up an internship at Royal Melbourne Hospital.



SCHOOL OF MEDICINE

BACHELOR OF MEDICINE BACHELOR OF SURGERY (MBBS)*

Duration: 4 years 8 months full-time (14 semesters)

Starting: May

ENTRY REQUIREMENTS

The Bachelor of Medicine Bachelor of Surgery (MBBS) program is an undergraduate program, however it is also open to postgraduate students. Enrolments in the program are strictly limited to ensure small class sizes and sufficient clinical placements. As such, entry is extremely competitive. Undergraduate applicants will be assessed based on the following equally-weighted criteria:

1. Overall secondary academic results which must include Year 12 Chemistry, Maths B (or equivalent) and English.
2. Undergraduate Medical Admissions Test (UMAT) results.
3. Structured interview ranking.

Applicants are selected through a rigorous assessment process based on outstanding academic achievement, in combination with demonstrated ability to achieve graduate outcomes of knowledge and critical thinking, leadership, initiative and teamwork, communication skills and responsibility, ethical decision-making skills, motivation, critical thinking and non-verbal reasoning.

Short-listed applicants will be required to attend an interview in person at Bond University where their general suitability to medicine and preparedness to undertake a highly demanding program will be examined in a structured multi-mini interview (MMI), comprising eight individual interviewers from both medical and non-medical backgrounds who are trained in entry-style medicine interviews.

Bond University is committed to easing the shortage of medical practitioners in Australia and therefore applications to the MBBS program are only open to Australian citizens, Australian permanent residents and holders of an Australian humanitarian visa. Applications are also open to New Zealand citizens but not to New Zealand permanent residents. Bond University may accept applications for applicants on behalf of foreign governments to which it has entered into specific arrangements.

PROGRAM DESCRIPTION

Bond's MBBS program offers direct entry to Year 12 school leavers and university graduates.

Established by one of the world's leading authorities in ensuring best medicine practice based on evidence (Evidence-Based Medicine), the program is distinguished by its strong educational focus on problem-based learning. Rather than studying one specialist subject area at a time, the curriculum challenges you with clinical cases that combine a range of symptoms, possible diagnoses and disciplines. Essentially, it puts you in real life clinical situations from day one.

PROGRAM STRUCTURE**

The Bond MBBS program is divided into different phases. The emphasis on the basic sciences in Year 1 changes towards the clinical applied sciences as the course progresses.

The first two years align with the Bond University semester format and extensively use problem-based learning (PBL). There is a weekly clinical case to which learning is integrated around. Each semester is 14 weeks and the students cover approximately 72 clinical cases in these first two years.



PROGRAM STRUCTURE**

> Year 1: Semesters 1 - 3 (42 weeks)

Emphasis on basic sciences with the subject matter integrated into problem-based learning cases rather than formal subjects. Subject matter includes:

- Anatomy
- Biochemistry
- Imaging
- Immunology
- Microbiology
- Pathology
- Pharmacology
- Physiology
- 35 problem-based learning cases
- Communication and history taking skills
- Procedural skills

> Years 2 - 3: Semesters 4 - 8

Problem-based learning with development of clinical reasoning.

- 47 Problem-based learning cases on the body systems, 2 - 4 cases in each system block:
 - Cardiovascular
 - Endocrine
 - Gastroenterology
 - Haematology
 - Musculoskeletal
 - Neurosciences
 - Renal
 - Respiratory
 - Sexual Health
 - Skin
- 14 week integrated clinical semester
- Further development of history taking and physical examination skills
- Further procedural skills

> Year 4

Consists of 43 academic weeks of 5 x 8 week clinical placements covering:

- Child Health
- Medicine
- Mental Health
- Surgery
- Women's Health
- Integrated clinical assessment throughout
- 2 weeks revision
- 1 week mid-year and end of year assessments

> Year 5

Consists of 42 academic weeks of:

- Block 1 x 8 weeks elective placement
- 34 weeks clinical placements
- Block 2 and 3 (8 weeks each)
 - 4 x 4 week placements in:
 - Medical specialities (cardiology, respiratory); or
 - Surgical specialities (ENT, urology) per block; or
 - 1 x 8 week placement in research (for selected students) with 2 x 4 week placements in medical specialities (cardiology, respiratory etc) or surgical specialities (ENT, urology) per block
- Blocks 4, 5 and 6 (6 weeks each, 18 weeks total)
 - General Practice
 - Emergency
 - Critical Care - Anaesthetics / ICU / Orthopaedics
- 1 week mid-year assessment and 1 week end-of-year assessments
- 2 weeks of revision
- Integrated clinical assessment throughout

PROFESSIONAL OUTCOMES

The Bond MBBS program is accredited by the Australian Medical Council, assuring that it meets or exceeds the agreed national guidelines for medical education. Graduates are qualified for registration as a medical practitioner in any state or territory in Australia. You will have the appropriate knowledge, attitudes and skills to function effectively as interns in Australian hospitals and will be ideally positioned to undergo further training in any of the Australasian specialty colleges.

Internship places are assessed by the individual states and are separate to universities. To date, 100 per cent of our MBBS graduates have secured internships in hospitals across Australia.

PROFESSIONAL RECOGNITION

- Australian Medical Council

*This program is available to Australian students only.

**Subject names and structure may change - please refer to www.bond.edu.au for updated information on program structure.



HUMANITIES &
SOCIAL SCIENCES



FACULTY OF HUMANITIES & SOCIAL SCIENCES

One of the most innovative of its kind, Bond University's Faculty of Humanities & Social Sciences applies the latest theory and research to its programs. With a focus on practical experience, you will be offered a range of Australian and international internships, ensuring you are workplace ready. The Faculty prides itself on offering a challenging intellectual climate which encourages you to widen your sense of what is humanly possible.

Schools within the Faculty of Humanities & Social Sciences include:

- School of Communication and Media - www.bond.edu.au/communication-media
- School of Humanities - www.bond.edu.au/humanities
- School of Social Sciences - www.bond.edu.au/social-sciences

INDUSTRY PARTNERS

The Faculty has developed industry partnerships with leading organisations including:

- Apple
- Austrade in Dubai, Paris, Singapore and Toronto
- Italian Chamber of Commerce and Industry
- iToys Hong Kong
- Maverick Marketing & Communications
- MTV Networks
- NBC - The Today Show, Washington DC Bureau, USA
- The Pacific Film and Television Commission
- Turkish Economic & Social Studies Foundation, Istanbul, Turkey



FACULTY FACILITIES

The Faculty of Humanities & Social Sciences has several state-of-the-art teaching and learning facilities including:

- Level Up Lab - A media facility specifically tailored for the development of 2D and 3D digital media.
- Film and TV Studio - One of the largest production facilities in South East Queensland.
- Psychology Clinic - A modern clinic with observation and consulting rooms, including a test library and student training area.

Nidhi Dutt

Correspondent and Presenter of India Business Report - BBC News, Mumbai

- 2002 Graduated from All Hallows' School, Brisbane and was awarded a scholarship to study at Bond University.
- 2004 Completed Bachelor of Communications, tailoring the degree by undertaking a double major in Foreign Correspondence and International Relations.
Graduated with extensive practical newsroom experience in print and broadcast media gained through internships with ABC TV's Stateline, The Canberra Times and The Fashion Journal.
- 2005 Secured job as Junior Reporter / Advertising Manager with Tribune Publications in London.
- 2006 Appointed Reporter / Producer with Reuters Ltd (Television) in London, covering general news, international events, arts and entertainment, finance and business.
Transferred to Mumbai as Reporter / Correspondent for 24-hour international news network, Times Now - a joint Reuters and Times of India venture.
- 2008 Appointed News and Current Affairs reporter for the ABC. Completed an internship with the United Nations Department of Information, Secretariat, New York City.
- 2010 - 2012 Mumbai Correspondent and presenter of India Business Report, BBC News.

SCHOOL OF COMMUNICATION AND MEDIA

BACHELOR OF COMMUNICATION

Duration: 2 years full-time (6 semesters)

Starting: January, May, September

ENTRY REQUIREMENTS

Successful completion of Year 12 or equivalent, or Bond College certificate.

PROGRAM DESCRIPTION

This degree program gives you the ideal mix of theory and practice, combining foundational studies in communication and media with focused studies in professional disciplines including journalism and public relations. It also allows you to pursue focused areas of study in the fields of corporate communication, media and advertising. The degree allows for a range of combinations of these studies, where you're able to select a combination which will give you the best of both worlds; excellent career prospects and a stimulating course of study.

PROGRAM STRUCTURE

University Core Subjects (4)

Refer to page 30

Communication Major (6)

You must complete:

- Communication Research
- Human Communication
- Mass Media

Plus three subjects from the following:

- Australian Media
- Digital Media and Society
- Interpersonal Communication
- Organisational Communication and Leadership
- Public Relations Principles and Practice
- Writing for the News Media

Specialist Major (12)

Select one specialist major of six subjects or a double major of 12 subjects in one of the following areas:

- Advertising
- Communication Studies
- Corporate Communication
- Film and Television*
- Journalism*
- Media
- Multimedia
- Public Relations

Elective Subjects (8)

Up to eight elective subjects of which at least four must come from the Faculty of Humanities & Social Sciences list of undergraduate subjects.

PROFESSIONAL OUTCOMES

You will be immersed in a range of professional experiences to give you a taste for the media careers to which you aspire. At the same time, a sound theoretical framework underpins studies so that you enter the communication and media industries understanding how to perform professional tasks and knowing why such tasks are important to your work.

Graduates could expect to find employment as an:

- Account manager
- Copywriter
- Event coordinator
- Journalist
- Marketing manager
- Media buyer
- Public relations practitioner

*A double major may be undertaken in this area.



BACHELOR OF COMPUTER GAMES

Duration: 2 years full-time (6 semesters)

Starting: January, May, September

ENTRY REQUIREMENTS

Successful completion of Year 12 or equivalent, or Bond College certificate.

PROGRAM DESCRIPTION

This degree is industry linked and designed to create graduates who understand interactive entertainment product development and production, as well as the functions and operations of allied fields such as advertising, journalism and multimedia.

PROGRAM STRUCTURE

University Core Subjects (4)

Refer to page 30

Games Studies Major (6)

You must complete:

- Computer Game Culture and Audience
- Computer Game Form, Narrative and Style
- Computer Game Industry and Policy
- Digital Media and Society
- Interactive Experience

Plus either:

- Computer Game Industry Internship OR Mass Media

Game Design Major (6)

Choose from the following subjects:

- 2D Animation and Simple Games
- 3D Modelling Animation and Video Combining
- Designing Sound Environments
- Digital Media Design
- Game Design and Logic
- Interactive Media Project and Presentation
- Website Design

Specialist Major (6)

You must select a specialist major comprising six subjects selected from the following areas:

- Advertising
- Communication
- Film and Television
- Information Technology
- Journalism
- Management
- Marketing
- Media
- Public Relations

Elective Subjects (2)

Any two other subjects of which at least one must come from the Faculty of Humanities & Social Sciences list of undergraduate subjects.

PROFESSIONAL OUTCOMES

The program is designed to equip you with the knowledge and practical experience that will enable you to step into careers in any area of the computer games industry and for careers in development allied fields, including design, sound, animation, 3D modelling, script writing, level design, product testing, programming, games journalism, gamevertising, public relations, business / government policy, distribution, regulation / classification, digital rights management copyright.

Graduates could expect to find employment as a:

- 2D and 3D animator
- Documentation and legal specialist
- Games journalist
- Level designer
- Programmer
- Project manager
- Quality assurance tester
- Story writer



BACHELOR OF FILM AND TELEVISION

Duration: 2 years full-time (6 semesters)

Starting: January, May, September

ENTRY REQUIREMENTS

Successful completion of Year 12 or equivalent, or Bond College certificate.

PROGRAM DESCRIPTION

Bond University's Bachelor of Film and Television is heavily hands-on and project-based. You will balance creative practice theory with practical production experience, which enables you to explore and develop your individual creativity. The program is focused on the key creative areas of directing, producing, screenwriting, cinematography, editing, sound and production design. It is taught by staff with long careers in the film and television industry. You will acquire skills in traditional and emerging production technologies, develop cinema aesthetics and receive insight into the commercial and industrial aspects of the international film and television industry.

PROGRAM STRUCTURE

University Core Subjects (4)

Refer to page 30

Foundation Subjects (14)

- Cinematography and Lighting 1
- Directing Actors
- Film and TV Editing
- Film Style and Genre
- Film and TV Audio Production
- Image and Photography
- Producing 1: International Film Industry
- Producing 2: Project Development
- Screenwriting 1
- Screenwriting 2
- Screen Production 1
- Screen Production 2
- Screen Production 3
- Television 1: Studio Production

Elective Subjects (6)

Any six subjects of which at least three must come from the Film and Television list of elective undergraduate subjects.

PROFESSIONAL OUTCOMES

The Bachelor of Film and Television is designed for those passionate about a career in film, television or related screen-based media in the Australian or international film industry.

Graduates could expect to find employment as a:

- Cinematographer
- Director
- Editor
- Producer
- Production designer
- Screen writer
- Sound designer



BACHELOR OF JOURNALISM

Duration: 2 years full-time (6 semesters)

Starting: January, May, September

ENTRY REQUIREMENTS

Successful completion of Year 12 or equivalent, or Bond College certificate.

PROGRAM DESCRIPTION

Bond University's Journalism program is recognised internationally for its quality and innovation. You can specialise in the areas of television journalism, health reporting, IT reporting, business and finance reporting, crime reporting, sports reporting or foreign correspondence.

PROGRAM STRUCTURE

University Core Subjects (4)

Refer to page 30

Foundation Subjects (6)

You must complete all of the following subjects:

- Ethical and Legal Strategies for the Media
- Image and Photography
- Major Australian Writing

Plus one of the following subjects:

- Mass Media
- The Australian Media

Plus one of the following subjects:

- Doing Business in Australia
- International Political Economy

Plus one of the following subjects:

- Australian Government and Politics
- Introduction to International Relations

Journalism Subjects (8)

You must complete the following subjects:

- Foundations of Broadcast Journalism
- Journalism Research Methods
- Newspaper Reporting
- Writing for the News Media

Plus four of the following:

- Broadcast Journalism Practice
- Foreign Correspondence
- Freelance Writing: Magazine and Creative Non-Fiction
- Photo Journalism, Editing and Publishing
- Reporting Specialties: Sports, Travel, Fashion

Practicum Subjects (2)

You must complete:

- Workplace Relations: Career Planning and Portfolio Development

Plus one of the following:

- Journalism Internship
- Special Topic in Journalism

Specialisation / Elective Subjects (4)

Four electives, of which at least two must come from the Faculty of Humanities & Social Sciences list of undergraduate subjects or four subjects from one of the areas listed below:

- Criminology
- Film and Television
- Finance
- Health Sciences
- Information Technology
- International Relations
- Language
- Law
- Psychology

PROFESSIONAL OUTCOMES

The program is designed for students with a career focus aimed directly at working in mainstream journalism, initially as a reporter in newspapers, radio, television or digital media. If you are pursuing other vocations where journalistic skills are required will also find this program beneficial.

Graduates could expect to find employment as an:

- Advertorial writer
- Broadcast journalist or editor
- Magazine writer or editor
- Print journalist or editor
- Public relations practitioner
- Web writer or editor



BACHELOR OF MULTIMEDIA DESIGN (ADVERTISING) (MASS COMMUNICATION) (PRODUCTION)

Duration: 2 years full-time (6 semesters)

Starting: January, May, September

ENTRY REQUIREMENTS

Successful completion of Year 12 or equivalent, or Bond College certificate.

PROGRAM DESCRIPTION

The degree is designed to give you the opportunity to specialise in Advertising, Mass Communication or Production. Each degree option develops a solid base of multimedia skills and knowledge, encompassing interface design, 2D animation, video production, introductory software development, web based design, digital audio and hands-on experience with real-world multimedia production. This knowledge is further enhanced by majors in your chosen field of specialisation, selecting from subject areas such as Advertising, Communication, Film and Television or Journalism.

PROGRAM STRUCTURE

University Core Subjects (4)

Refer to page 30

Foundation Subjects (6)

- 2D Animation and Simple Games
- 3D Modelling, Animation and Video Combining
- Designing Sound Environments
- Digital Media Design
- Interactive Media Project and Presentation
- Website Design

Specialist Major (6)

You must complete a specialist major comprising six subjects from one of the following areas:

- Advertising
- Communication
- Film and Television
- Information Technology
- Journalism

Elective Subjects (2)

Any two other subjects of which at least one must come from the Faculty Humanities & Social Sciences list of undergraduate subjects.

Plus a further six subjects for a specialisation.

Specialist Streams (6)

In addition to the core, foundation, specialist and elective subjects above, you must choose an area of specialisation and complete one of the following specialist streams:

> Advertising:

Specialist Major in Advertising

- Advertising, Brand Image and Cultural Space
- Advertising Principles and Practice
- Attitudes, Persuasion, Leadership and Conformity
- Communication Research
- Communication and Shared Leadership in Groups and Teams
- Creativity in Marketing Communication
- Direct Response Advertising
- Integrated Marketing Communication
- Internet Advertising
- Media Planning and Buying
- Visuality: Understanding Visual Forms
- Workplace Relations, Career Planning and Portfolio Development

> Mass Communication:

Specialist Major in Media Studies

You must complete:

- Human Communication
- Mass Media

Plus four of the following:

- Computer Game Industry and Policy
- Digital Media and Society
- Ethical and Legal Strategies for the Media
- Film Analysis 1: Style and Genre
- Interactive Experience
- Internet Advertising
- Introduction to International Relations
- The Australian Media



> Production:

Specialist Major in Film and Television Production

You must complete:

- Directing Actors
- Film Style and Genre
- Screen Production 1
- Screen Production 2
- Screenwriting 1
- Producing 1: International Film Industry

PROFESSIONAL OUTCOMES

The knowledge and skills developed in these programs will provide you with the qualifications to establish careers in a wide range of public and private sector industries, here in Australia and overseas. The possibilities include media, advertising, business marketing and public relations, IT, film and television, entertainment and video gaming and online interactive training networks, to name just a few.

Graduates could expect to find employment as a:

- 2D and 3D animator
- Advertising creative
- Art direction / visual design
- Digital image design
- Interface design
- Multimedia design / project design
- Multimedia development
- Web design and related areas

SCHOOL OF HUMANITIES

ASSOCIATE DEGREE

Duration: 1 year full-time (3 semesters)

Starting: January, May, September

ENTRY REQUIREMENTS

Successful completion of Year 12 or equivalent, or Bond College certificate.

PROGRAM DESCRIPTION

This program allows qualified applicants to undertake university-level study without enrolling in a full degree program. It may be selected for a variety of reasons, including professional and personal development.

PROGRAM STRUCTURE

University Core Subject (1)

- Communication Skills or Public Speaking

Foundation Subjects (8)

You must complete eight subjects from the Faculty of Humanities & Social Sciences schedule, including one major (six subjects).

Elective Subjects (3)

Three subjects of which at least two must come from the Faculty of Humanities & Social Sciences list of undergraduate subjects.



BACHELOR OF ARTS

Duration: 2 years full-time (6 semesters)

Starting: January, May, September

ENTRY REQUIREMENTS

Successful completion of Year 12 or equivalent, or Bond College certificate.

PROGRAM DESCRIPTION

The Bachelor of Arts allows you to select combinations of subject areas and particular subjects which best suit your interests and aspirations. It is a generalist program offering you flexibility in your choice of majors with the opportunity to either specialise in a particular area of study, or to select complementary majors.

PROGRAM STRUCTURE

University Core Subjects (4)

Refer to page 30

Majors (12)

You must complete two majors or one double major, selected from the list of available majors below:

- Advertising
- Australian Studies
- Behaviour Management
- Chinese Language (Mandarin)
- Chinese Studies
- Criminology*
- Communication
- Computer Games
- Corporate Communication
- Counselling
- English as an International Language
- Film and Television*
- French Language
- French Studies
- Global Governance and Regional Politics

- International Diplomacy
- International Relations*
- Japanese Language
- Japanese Studies
- Journalism*
- Language Studies
- Language Teaching (TESOL / LOTE)
- Media
- Multimedia
- Philosophy
- Psychology*
- Public Relations
- Spanish Language
- Spanish Studies
- Television Journalism*

Elective Subjects (8)

Eight subjects of which at least four must come from the Faculty of Humanities & Social Sciences list of undergraduate subjects.

PROFESSIONAL OUTCOMES

This degree will provide you with not only a strong but a broad set of skills essential to all professions no matter what your chosen career.

*A double major may be undertaken in this area.

Julien Pellaux

Communication Analyst - United Nations Population Fund, New York, USA

- 2000 Came to Bond for one semester as a Study Abroad student and decided to fast-track his Bachelor of International Relations by staying on for the whole degree.
- 2001 Undertook internship at the Brazilian Consulate in Sydney.
- 2002 Completed final semester of degree in the USA at University of Delaware through Bond's International Exchange program.
- 2002-2004 Returned home to Geneva and completed a Masters of International Relations at the Graduate Institute of International Studies.
- 2005 Served as Communication & Advocacy Officer for the United Nations Population Fund (UNFPA) in Kyrgyzstan as part of the UN Volunteers Program.
- 2006 Appointed UN Co-ordination Specialist in Tajikistan.
- 2007 Relocated to New York to take up appointment as Communication Analyst in the Office of the Executive Director of UNFPA, providing support with speech writing and developing communication strategies for the executive leadership.
- 2010 - 2012 Reassigned to Almaty, Kazakhstan for the post of Regional Programme Specialist on Gender and Human Rights with the United Nations Population Fund.



BACHELOR OF INTERNATIONAL RELATIONS

Duration: 2 years full-time (6 semesters)

Starting: January, May, September

ENTRY REQUIREMENTS

Successful completion of Year 12 or equivalent, or Bond College certificate.

PROGRAM DESCRIPTION

Global and regional interdependence means that no nation, least of all Australia, is unaffected by developments beyond its borders. National survival is now premised on international orientation. This means that businesses, for example, need people equipped not only with business skills but also with competencies in international relations.

PROGRAM STRUCTURE

University Core Subjects (4)

Refer to page 30

Majors (12)

You must complete two majors (comprising six subjects each) from the following three areas:

> International Relations

This major comprises six subjects drawn from any of the International Relations undergraduate subjects.

> International Diplomacy

You must complete:

- Introduction to International Relations
- Introduction to Geopolitics
- Introduction to Diplomacy

Plus three of the following subjects:

- Australian Identity in the International Perspective
- East-West International Diplomacy
- International Development (Theory and Practice)
- International Relations Practicum
- Strategic China
- Strategic India
- The United Nations

Or any two of the above subjects plus one foreign language subject.

> Global Governance and Regional Politics

You must complete:

- The United Nations
- Alternative Globalisations
- Prospects for Global Politics

Plus four subjects from the following:

- Australia and the Asia Pacific
- East-West International Diplomacy
- Eurasia
- European Political Economy
- Introduction to International Relations
- Introduction to Geopolitics
- Latin America in the International System
- Strategic China
- Strategic India

Elective Subjects (8)

Eight subjects of which at least four must come from the Faculty of Humanities & Social Sciences list of undergraduate subjects.

PROFESSIONAL OUTCOMES

Graduates of this program will have a global perspective which will suit their areas of interest and professional goals while having developed the skill base necessary to operate in a global environment.

Graduates could expect to find employment in:

- Defence
- Diplomacy
- Foreign affairs
- International business
- Media
- Trade



GRADUATE CERTIFICATE IN LANGUAGE

Duration: 2 years part-time (6 semesters)

Starting: January, May, September

ENTRY REQUIREMENTS

Currently enrolled in a Bond University undergraduate degree program*.

PROGRAM DESCRIPTION

This program provides a unique opportunity for currently enrolled undergraduate students to enhance their study program by learning a foreign language. French, Spanish, Chinese (Mandarin) or Japanese languages may be studied. You will study four levels of a language and be functionally proficient in the written and spoken practices of your language of choice. You will gain knowledge of and insight into the cultural conventions and current affairs specific to your chosen language.

PROGRAM STRUCTURE

Foundation Subjects (4)

You must complete four subjects from one chosen language area as follows:

- French Language (Levels 1 - 4)
- Spanish Language (Levels 1 - 4)
- Chinese Language (Levels 1 - 4)
- Japanese Language (Levels 1 - 4)

Most students undertake four subjects per semester (40 credit points). You may however, enrol in fewer subjects and extend your degree over a longer period.

PROFESSIONAL OUTCOMES

The study of language is applicable to any career or industry and facilitates employment in an ever changing globalised world. This program will provide you with the opportunity to obtain a second qualification at postgraduate level concurrently with your undergraduate degree program.

*All applications for the Graduate Certificate in Language must be approved by the Faculty. Speakers already proficient in their native language will not be eligible to study their native language.



SCHOOL OF SOCIAL SCIENCES

BACHELOR OF BEHAVIOUR MANAGEMENT

Duration: 2 years full-time (6 semesters)

Starting: January, May, September

ENTRY REQUIREMENTS

Successful completion of Year 12 or equivalent, or Bond College certificate.

PROGRAM DESCRIPTION

This degree is designed for those interested in working with clients challenged by moderate to severe behavioural difficulties. You will learn about the functional analysis frameworks and practical techniques required for dealing effectively with child, adolescent and adult clients, many of whom have a diagnosis of a developmental disability or learning disorder. Analysing and understanding the reasons for challenging behaviours is a major focus of this degree. Teaching centres on a problem-focused model and you will receive supervised behaviour management experience as part of the practical placement.

PROGRAM STRUCTURE

University Core Subjects (4)

Refer to page 30

Foundation Subjects (12)

- Abnormality and Illness
- Assessment and Diagnosis
- Behaviour Analysis and Intervention
- Foundations of Counselling
- Interventions with People Experiencing Difficulties
- Policy Case Management and Independent Living
- Practicum in Behaviour Management
- Research Project - Behaviour Management
- Science and Religion
- The Influence of Biology on Human Behaviour
- Theory and Practice of Functional Analysis
- Understanding and Changing Human Behaviour

Humanities and Social Sciences Subjects (6)

- Australian Schools and Education Systems
- Corporate and Community Conflict Resolution
- Criminal Profiling
- Developmental Psychology
- Human Communication
- Statistics and Data Analysis 1

Elective Subjects (2)

Two other subjects of which at least one must come from the Faculty of Humanities & Social Sciences list of undergraduate subjects.

PROFESSIONAL OUTCOMES

This degree will qualify you for careers as:

- Case managers
- Disability instructors
- Behaviour management workers



BACHELOR OF COUNSELLING

Duration: 2 years full-time (6 semesters)

Starting: January, May, September

ENTRY REQUIREMENTS

Successful completion of Year 12 or equivalent, or Bond College certificate.

PROGRAM DESCRIPTION

This degree is designed for those interested in working hands-on with clients who are experiencing difficulties in meeting the demands of their day-to-day life. You will learn about the key counselling frameworks and practical approaches for working with clients to help them overcome their personal difficulties. One major focus of this degree is on presenting counselling as a person-centred profession, designed to explore and create positive changes in client difficulties. Teaching centres on a problem-focused model and you will receive supervised counselling experience during the completion of a practicum subject.

PROGRAM STRUCTURE

University Core Subjects (4)

Refer to page 30

Foundation Subjects (14)

- Abnormality and Illness
- Assessment and Diagnosis
- Behaviour Analysis and Interventions
- Counselling Interventions for Specific Groups and Populations
- Ethical, Legal and Professional Issues in Counselling
- Foundations of Counselling
- Functional Analysis and Treatment in Counselling
- Interventions with People Experiencing Difficulties
- Practicum in Counselling
- Research Project in Counselling
- Science and Religion
- The Influence of Biology on Human Behaviour
- Theory and Practice in Counselling
- Understanding and Changing Human Behaviour

Humanities and Social Sciences Subjects (4)

- Corporate and Community Conflict Resolution
- Developmental Psychology
- Human Communication
- Statistics and Data Analysis 1

Elective Subjects (2)

Two other subjects of which at least one must come from the Faculty of Humanities & Social Sciences list of undergraduate subjects.

PROFESSIONAL OUTCOMES

This degree will qualify you for employment as a hands-on practitioner in hospitals, government departments (for example child protection), specialist intervention programs (for example drug rehabilitation), social welfare agencies, independent schools and as private consultants.

PROFESSIONAL RECOGNITION

This program is accredited with the Psychotherapy and Counselling Federation of Australia (PACFA).

In accordance with PACFA Training Standards, those seeking membership of a PACFA member association, will be required to complete a combination of study and additional supervised practice hours, to meet the minimum duration of three years.



BACHELOR OF SOCIAL SCIENCE

Duration: 2 years full-time (6 semesters)

Starting: January, May, September

ENTRY REQUIREMENTS

Successful completion of Year 12 or equivalent, or Bond College certificate.

PROGRAM DESCRIPTION

This degree encompasses a mix of several disciplines including criminology, psychology, counselling and behaviour management. This program allows you to combine subjects from this area and from other areas to complete a degree whose title reflects a specialisation of studies in the social sciences area of the Faculty.

PROGRAM STRUCTURE

University Core Subjects (4)

Refer to page 30

Majors (12)

From the list of undergraduate subjects in Criminology:

- Psychology
- Behaviour Management
- Counselling

For more information on subjects in Criminology, visit www.bond.edu.au/social-science/structure-and-subjects.

The following is an outline of the concentration of studies you can undertake:

> Option 1: Psychology and Criminology

Six subjects from undergraduate Psychology offerings, plus six subjects drawn from the undergraduate Criminology offerings.

> Option 2: Psychology and Behaviour Management

Six subjects drawn from the undergraduate Psychology offerings and the following six undergraduate Behaviour Management subjects:

- Assessment and Diagnosis
- Behaviour Analysis and Interventions
- Interventions with People Experiencing Difficulties
- Policy, Case Management and Independent Living
- The Influence of Biology on Human Behaviour
- Understanding and Changing Human Behaviour

> Option 3: Psychology and Counselling

Six subjects drawn from the undergraduate Psychology offerings and the following six Counselling subjects:

- Abnormality and Illness
- Assessment and Diagnosis
- Counselling Interventions for Specific Groups and Populations
- Ethical, Legal and Professional Issues in Counselling
- Foundations of Counselling
- Understanding and Changing Human Behaviour

> Option 4: Criminology and Behaviour Management

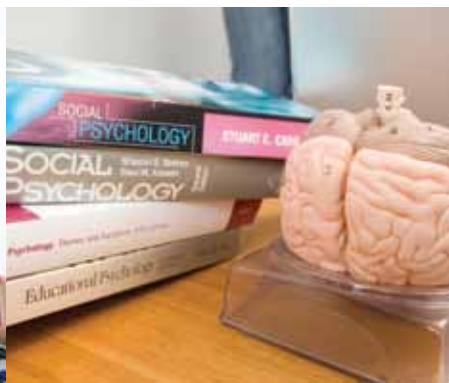
Six subjects drawn from the undergraduate Criminology offerings and the following six Behaviour Management subjects:

- Assessment and Diagnosis
- Behaviour Analysis and Interventions
- Interventions with People Experiencing Difficulties
- Policy, Case Management and Independent Living
- The Influence of Biology on Human Behaviour
- Understanding and Changing Human Behaviour

> Option 5: Criminology and Counselling

Six subjects drawn from the undergraduate Criminology offerings and the following six Counselling subjects:

- Abnormality and Illness
- Assessment and Diagnosis
- Counselling Interventions for Specific Groups and Populations
- Ethical, Legal and Professional Issues in Counselling
- Foundations of Counselling
- Understanding and Changing Human Behaviour



Elective Subjects (8)

Eight subjects of which at least four must come from the Faculty of Humanities & Social Sciences list of undergraduate subjects.

PROFESSIONAL OUTCOMES

This program will provide you with a basis for working in areas such as welfare, government departments, disability services or as a disability officer or case worker, client support and advocacy as well as working with behavioural difficulties of children in educational settings.

Those who choose a Behaviour Management focus will learn the framework and procedures for implementing functional analytical therapy with clients who have severe behavioural difficulties.

Those who choose a criminology focus combined with behaviour management will gain the ability to understand atypical behaviour patterns.

Those who combine their studies with Psychology will be provided with a basis for understanding the presenting problems with clients in order to develop effective needs-based treatment programs.

BACHELOR OF SOCIAL SCIENCE (CRIMINOLOGY)

Duration: 2 years full-time (6 semesters)

Starting: January, May, September

ENTRY REQUIREMENTS

Successful completion of Year 12 or equivalent, or Bond College certificate.

PROGRAM DESCRIPTION

This program provides a general introduction to the broad range of issues discussed within criminological theories. You will be provided with both knowledge and research skills and techniques required for analysis of criminological issues and an understanding of how to critically evaluate public research.

PROGRAM STRUCTURE

University Core Subjects (4)

Refer to page 30

Double Major in Criminology (12)

Twelve subjects drawn from the undergraduate Criminology offerings. For a detailed list please visit www.bond.edu.au/social-science/structure-and-subjects.

Elective Subjects (8)

Eight subjects of which at least four must come from the Faculty of Humanities & Social Sciences list of undergraduate subjects.

PROFESSIONAL OUTCOMES

Graduates of this program could find opportunities in the areas of research, teaching, intelligence analysis, program development, service delivery and consulting. Employment may be gained in areas such as state and federal agencies, law enforcement or crime research, specially convened tribunals, police, community welfare and so on. Students with a background in areas such as journalism, psychology, public relations and international relations could also benefit from completing studies in this area.



BACHELOR OF SOCIAL SCIENCE (PSYCHOLOGY)

Duration: 2 years full-time (6 semesters)

Starting: January, May, September

ENTRY REQUIREMENTS

Successful completion of Year 12 or equivalent, or Bond College certificate.

PROGRAM DESCRIPTION

This degree offers an introduction to the discipline of psychology and explores topics such as the biological bases of behaviour, personality, sensation and perception, learning, memory, language, motivation and emotion, lifespan development, social behaviour and psychological disorders.

PROGRAM STRUCTURE

University Core Subjects (4)

Refer to page 30

Foundation Subjects (16)

- Biological Psychology
- Cognitive Psychology
- Developmental Psychology
- Introduction to Psychology: Biology and Personality
- Introduction to Psychology: Learning and Social Learning and Behaviour
- Motivation and Emotion
- Personality and Individual Differences
- Psychopathology
- Research Methods in Psychology
- Sensation and Perception
- Social Psychology
- Statistics and Data Analysis I
- Statistics and Data Analysis II
- Statistics and Data Analysis III

Plus one Psychology elective from the following:

- Drugs and Behaviour
- Introduction to Counselling Psychology
- Introduction to Forensic Psychology
- Love, Sex and Relationships
- Psychology at Work

Elective Subjects (4)

Four elective subjects of which at least two must come from the Faculty of Humanities & Social Sciences list of undergraduate subjects.

PROFESSIONAL OUTCOMES

This degree will qualify you for employment in professional areas such as counselling and various functions associated with human resources. It is also the building block for further studies where you are able to pursue careers in the professional practice of psychology including clinical, organisational or forensic psychology, counselling, health and community psychology, research and other specialist areas.

PROFESSIONAL RECOGNITION

This program is fully accredited by the Australian Psychology Accreditation Council as the equivalent of three years university training in psychology.



BACHELOR OF SOCIAL SCIENCE (PSYCHOLOGY) (WITH HONOURS)

Duration: 8 months full-time (2 semesters)

Starting: January, May, September

ENTRY REQUIREMENTS

Completion of an accredited three-year sequence of study in psychology in Australia, or equivalent. Applicants are assessed on academic merit and must have achieved a minimum GPA of 2.5 on the Bond University 4.0 scale for all second and third level psychology subjects. Where students have not achieved this level or competition for places has excluded them, students may be offered a place in the Postgraduate Diploma of Psychology program.

PROGRAM DESCRIPTION

The Honours program in Psychology prepares you for entry into a career in psychology (that is, provisional registration as a psychologist in addition to two years of supervised training). The program also prepares you for the fifth and sixth years of your professional training, such as a master's degree or PhD. This program is accredited by the Australian Psychology Accreditation Council as the equivalent of a fourth year of study in Psychology.

PROGRAM STRUCTURE

You must complete:

- Honours Thesis 1: Research Seminar and Ethics
- Honours Thesis 2
- Human Experimental Psychology
- Multivariate Research Methods
- Principles of Psychological Assessment

Plus two subjects from the following:

- Clinical Psychology
- Community and Health Psychology
- Forensic Psychology
- Industrial and Organisational Psychology
- Neuropsychology
- Social Cognition
- The Scientist Practitioner Model

PROFESSIONAL OUTCOMES

Under supervision, you will be able to pursue careers in the professional practice of psychology including clinical, forensic or organisational psychology, counselling, health and community psychology, research and other specialist areas.

PROFESSIONAL RECOGNITION

The Bachelor of Social Science (Psychology) (with Honours) is accredited by the Australian Psychology Accreditation Council.





FACULTY OF LAW

Bond Law has earned an international reputation for its personalised teaching environment, integrated legal skills training and the international focus of its degree offerings.

Bond's law program has been consistently ranked the best in Australia for the past six years in graduate surveys conducted by Graduate Careers Australia and has retained the number one position for graduate satisfaction* for the past five years.

INDUSTRY PARTNERS

The Faculty has developed industry partnerships with leading organisations including:

- Administrative Appeals Tribunal
- Allens Arthur Robinson
- Baker & McKenzie
- Blake Dawson Waldron
- Clayton Utz
- Dibbs Barker
- Freehills
- Norton Rose
- Queensland Office of the Director of Public Prosecutions



FACULTY FACILITIES

Bond Law's Legal Skills Centre is the first of its kind to integrate the full complement of legal-based training facilities, with moot courtrooms and purpose-built suites designed for mediation, dispute resolution and Professional Legal Training. Modelled on input provided by judges, legal practitioners and the Faculty, this 21st century facility is designed to give you simulated real world experience in practising your legal skills, ensuring that, as graduates, you will be workplace ready.

*Compared to Australia's Group of Eight Leading universities, Graduate Careers Australia's 2009 Australian Graduate Survey based on 2008 graduates.



BACHELOR OF LAWS

Duration: 2 years 8 months full-time (8 semesters)

Starting: January, May, September

ENTRY REQUIREMENTS

Successful completion of Year 12 or equivalent, or Bond College certificate (minimum 65 per cent average).

If you have already completed an undergraduate degree in a discipline other than law, you would normally apply for our postgraduate professional qualification, the Juris Doctor.

PROGRAM DESCRIPTION

Bond's law program is designed to equip you for a career in the legal profession, corporate or government sectors, both within Australia and overseas. The combination of excellent teaching, small class sizes and extensive legal skills program provides an exciting learning experience that both challenges you academically and prepares you practically for a legal career. Our 20-component skills program will equip you with the following skills needed to practise law in a modern environment:

- Oral communication and presentation
- Legal research and analysis
- Legal writing and drafting
- Negotiation

PROGRAM STRUCTURE

University Core Subjects (4)

Refer to page 30

Compulsory Law Subjects (19)

The 19 compulsory subjects cover all the 'Priestley Eleven' areas required to practise law in Australia.

- Administrative Law
- Australian Legal System
- Bookkeeping and Trust Accounts*
- Business Associations
- Civil Procedure
- Constitutional Law
- Corporations Law
- Criminal Law and Procedure A
- Criminal Law and Procedure B
- Equity
- Evidence
- Land Law
- Law of Civil Remedies
- Law of Obligations
- Legal Ethics and Professional Conduct*
- Legal Skills
- Personal Property Transactions
- Principles of Contractual Liability
- Principles of Tortious Liability
- Property Law

Law Elective Subjects (5)

A wide range of law electives are offered, with particular emphasis on corporate and commercial law subjects. A range of specialty streams are available, including:

- Corporate and Commercial Law
- General Legal Practice
- Intellectual Property, Information Technology and E-Commerce
- International Trade Law
- Public Law



General Elective Subjects (4)

Please visit www.bond.edu.au/law-degrees for more details.

Outstanding graduates may qualify to receive their degree with Honours. Candidates for the Honours degree must fulfil the requirements for the pass degree and achieve such standard of proficiency as the Faculty of Law may from time to time determine.

INDUSTRY EXPERIENCE

You are encouraged to complete clerkships or internships with law firms during your holidays but these do not form part of degree requirements, unless a clinical legal subject is chosen as an elective. Our dedicated law Graduate Development Office is available to assist you in your search for a suitable placement.

PROFESSIONAL OUTCOMES AND RECOGNITION

The Bachelor of Laws degree prepares you to pursue careers in both the public and private sectors. These positions include solicitor, barrister, government lawyer, in-house counsel or judge's associate.

The Bachelor of Laws is an approved degree for the purposes of admission as a legal practitioner in all Australian jurisdictions, in conjunction with further study (Postgraduate Diploma of Legal Practice (PLT)) or a traineeship. The degree can also be used to apply for admission internationally. You are however always advised to confirm admission requirements in the particular jurisdiction in which you wish to practise.

POPULAR COMBINED DEGREES

- Bachelor of Laws / Bachelor of Arts
- Bachelor of Laws / Bachelor of Business
- Bachelor of Laws / Bachelor of Commerce
- Bachelor of Laws / Bachelor of International Relations
- Bachelor of Laws / Bachelor of Social Science (Psychology)

*Half unit subject.





BACHELOR OF BUSINESS LAW

Duration: 2 years full-time (6 semesters)

Starting: January, May, September

ENTRY REQUIREMENTS

Successful completion of Year 12 or equivalent, or Bond College certificate (minimum 65 per cent average).

PROGRAM DESCRIPTION

This degree provides an opportunity to combine legal subjects of particular interest with study in related disciplines such as business and information technology.

PROGRAM STRUCTURE

University Core Subjects (4)

Refer to page 30

Law Compulsory Subject (1)

- Australian Legal System

Law Elective Subjects (11)

A wide range of law electives are offered, with particular emphasis on corporate and commercial law subjects. You may use these subjects to specialise in one particular area, such as:

- Corporate and Commercial Law
- Intellectual Property, Information Technology and E-Commerce
- International Trade Law
- Public Law

Business / IT Subjects (8)

Eight undergraduate Business or Information Technology subjects including a six-subject major.

PROFESSIONAL OUTCOMES

Bond's flexible degree structure permits various combinations of law and non-law subjects. This flexibility enables you to design your program to meet a variety of career interests. Law is increasingly regarded as an excellent preparation for a wide range of careers and, with arts and sciences, is an important source of liberal education. Careers in politics, business, banking and finance, teaching, public service, industrial relations and international relations are among the many open to graduates.

PROFESSIONAL RECOGNITION

Unlike the Bachelor of Laws degree, the Bachelor of Business Law is not designed to provide a qualification for the professional practise of law. If you wish to practise law, you must complete a Bachelor of Laws or Juris Doctor degree.



BACHELOR OF JURISPRUDENCE

Duration: 2 years full-time (6 semesters)

Starting: January, May, September

ENTRY REQUIREMENTS

Successful completion of Year 12 or equivalent, or Bond College certificate (minimum 65 per cent average).

PROGRAM DESCRIPTION

These degrees provide an opportunity to combine legal subjects of particular interest with study in related disciplines such as international relations, criminology, languages and communication.

PROGRAM STRUCTURE

University Core Subjects (4)

Refer to page 30

Law Compulsory Subject (1)

- Australian Legal System

Law Elective Subjects (11)

A wide range of law electives are offered, with particular emphasis on corporate and commercial law subjects. You may use these subjects to specialise in one particular area, such as:

- Corporate and Commercial Law
- Intellectual Property, Information Technology and E-Commerce
- International Trade Law
- Public Law

Humanities Subjects (8)

Eight undergraduate humanities subjects including a six-subject major.

PROFESSIONAL OUTCOMES

Bond's flexible degree structure permits various combinations of law and non-law subjects. This flexibility enables you to design your program to meet a variety of career interests. Law is increasingly regarded as an excellent preparation for a wide range of careers and, with arts and sciences, is an important source of a liberal education. Careers in politics, business, banking and finance, teaching, public service, industrial relations and international relations are among the many open to graduates.

PROFESSIONAL RECOGNITION

Unlike the Bachelor of Laws degree, the Bachelor of Jurisprudence is not designed to provide a qualification for the professional practise of law. If you wish to practise law, you must complete a Bachelor of Laws or Juris Doctor degree.





INSTITUTE OF SUSTAINABLE DEVELOPMENT & ARCHITECTURE

The Bond University Institute of Sustainable Development & Architecture classes are delivered by expert teaching staff who are dedicated to educating sustainability professionals of the future. The Institute is dedicated to the concept and practice of sustainability by integrating design, planning, property, construction, urban development, architecture and sustainable science education. It is one of Australia's leading integrated academic institutions with a holistic adoption of sustainable development and architecture.

Schools within the Institute of Sustainable Development & Architecture include:

- Mirvac School of Sustainable Development - www.bond.edu.au/sdev
- Soheil Abedian School of Architecture - www.bond.edu.au/architecture

INDUSTRY PARTNERS

The Institute has developed industry partnerships with leading organisations including:

- Australian Institute of Building Surveyors
- Australian Institute of Project Management
- Australian Institute of Quantity Surveyors
- Australian Property Institute
- Mirvac
- Royal Institute of Chartered Surveyors
- Soheil Abedian



INSTITUTE FACILITIES

The Institute of Sustainable Development & Architecture has a 6 Star Green Star Certified Rating with the Green Building Council of Australia making it one of the most environmentally friendly buildings in the country. It makes maximum use of natural light and uses mixed mode ventilation, with the overall design incorporating extensive use of recycled and environmentally friendly materials right down to the carpet and low-emission paint. A grey water recycling system and water tanks means it relies less on the local water supply and with all features combined, the building achieves more than an 80 per cent reduction in carbon emissions.



MIRVAC SCHOOL OF SUSTAINABLE DEVELOPMENT

ASSOCIATE DEGREE IN REAL ESTATE*

Duration: 1 year full-time (3 semesters)

Starting: January, May, September

ENTRY REQUIREMENTS

Successful completion of Year 12 or equivalent, or Bond College certificate.

PROGRAM DESCRIPTION

The Associate Degree in Real Estate is aimed as an entry and exit point. You can enrol and complete all 12 subjects and exit with an Associate Degree in Real Estate or you can continue on into the Bachelor of Property and Sustainable Development.

As a pathway program, this degree provides an introduction to the emerging aspects in real estate and provides a better understanding of sustainable property, principles of valuation, project management, investment analysis, planning and property management.

PROGRAM STRUCTURE

University Core Subjects (2)

Two subjects from either of the below categories:

- Communication Skills or Public Speaking
- Strategic Management or Entrepreneurship

Foundation Subjects (4)

- Land Economy and the Environment
- Planning Process
- Sustainable Development and Society
- Understanding Buildings

Real Estate Agency Subjects (6)

You must complete the following six subjects:

- Managing Projects
- Principles of Property Law
- Principles of Property Valuation
- Property Agency and Marketing
- Property Finance and Taxation
- Sustainable Property Management

PROFESSIONAL OUTCOMES

The Associate Degree in Real Estate provides an excellent training ground for those aspiring to advance in many aspects of real estate. This degree will develop your specialised industry skills to prepare you for a career in:

- Property agency
- Property development
- Property management
- Real estate

Graduates who are able to gain a higher level of understanding of real estate's planning processes, property management and property agency with a view to sustainability have the potential of positioning themselves as leaders in this sector.

*This program is available to Australian students only. International students should enquire within the Institute of Sustainable Development & Architecture for more information. Subject name and structure may change - please refer to www.bond.edu.au/isda for updated information on program structure.



ASSOCIATE DEGREE IN SUSTAINABLE DEVELOPMENT*

Duration: 1 year full-time, (3 semesters)

Starting: January, May, September

ENTRY REQUIREMENTS

Successful completion of Year 12 or equivalent, or Bond College certificate.

PROGRAM DESCRIPTION

The Associate Degree in Sustainable Development is designed to equip you with a strong foundation and advanced technical skills for careers within property related industries and professions. You must choose a specialisation from Property Valuation, Urban Development and Sustainability or Construction Management and Quantity Surveying. The final semester is highlighted by an industry sponsored capstone project which integrates the full range of topics covered during the degree.

This degree is aimed as an entry and exit point. You can enrol and complete all 12 subjects and exit with an Associate Degree in Sustainable Development or you can continue on into the Bachelor of Property and Sustainable Development.

PROGRAM STRUCTURE

University Core Subjects (2)

Two subjects from either of the below categories:

- Communication Skills or Public Speaking; Presentation Skills for Leaders
- Strategic Management or Entrepreneurship

Foundation Subjects (4)

- Land Economy and the Environment
- Planning Process
- Sustainable Development and Society
- Understanding Buildings

Specialisations (6)

You must choose six subjects from one of the following specialisations:

> Property Valuation

- Business Law
- Construction Technology
- Economics of Sustainable Development
- Introduction to Accounting
- Property Agency and Marketing
- Property Finance and Taxation
- Property Investment and Development
- Property Investment Valuation
- Property Management
- Property Resource Analysis
- Principles of Property Law
- Principles of Property Valuation
- Specialist Valuation
- Statutory Valuation
- Urban Development

> Urban Development and Sustainability

- Assets and Facilities Management
- Business Law
- Construction Technology
- Corporate Real Estate
- Economics of Sustainable Development
- Introduction to Accounting
- Managing Projects
- Property Agency and Marketing
- Property Investment
- Property Finance and Taxation
- Principles of Property Valuation
- Sustainable Design
- Urban Development



› **Construction Management and Quantity Surveying**

- Business Law
- Commercial Construction and Engineering
- Construction Site Management
- Construction Tendering and Finance
- Early Estimating and Cost Planning
- Integrated Measurement and Professional Practice
- Managing Projects
- Measurement 1
- Measurement 2
- Project Contract Administration
- Project Delivery Systems
- Project Planning and Scheduling
- Structural Engineering
- Sustainable Building Services
- Sustainable Design

PROFESSIONAL OUTCOMES

There are many career paths for graduates of the Associate Degree in Sustainable Development including:

- Asset manager
- Construction manager
- Contract administrator
- Facilities manager
- Investment manager
- Project manager
- Property developer
- Property manager
- Property researcher / analyst
- Property valuer
- Quantity surveyor

*This program is available to Australian students only. International students should enquire within the Institute of Sustainable Development & Architecture for more information. Subject name and structure may change - please refer to www.bond.edu.au/isda for updated information on program structure.



BACHELOR OF ENVIRONMENTAL MANAGEMENT (SUSTAINABLE DEVELOPMENT)

Duration: 2 years full-time (6 semesters)

Starting: January, May, September

ENTRY REQUIREMENTS

Successful completion of Year 12 or equivalent, or Bond College certificate.

PROGRAM DESCRIPTION

Sustainability and climate change are fundamental global challenges. Being part of the solution to these issues can be a rewarding and exciting career choice. The Bachelor of Environmental Management (Sustainable Development) is distinguished by its emphasis on the most current principles and practice within the field. You will focus on the important sustainability issues including the core elements of science, technology, economics, policy, development, impact assessment and entrepreneurship. You will engage in practical work experience through field studies, industry internships and a client-driven industry project. The curriculum is focused on both Australian and international best practice.

PROGRAM STRUCTURE*

University Core Subjects (4)

Refer to page 30

Environmental Management Subjects (16)

- Assessing the Australian Environment: Introductory Field Work
- City, Culture and Environment
- Economics of Sustainable Development
- Environmental and Economic Impact Assessment
- Environmental Field Analysis of Rainforest and Coastal Regions
- Environmental Policymaking
- Environmental Science
- Introduction to Geographic Information Systems
- Land Economy and the Environment
- Managing Projects
- Natural Systems
- Planning Process
- Sustainability Science
- Sustainable Design
- Sustainable Development and Society
- Capstone Project

Elective Subjects (4)

Plus four electives chosen from subjects offered by the Institute or any faculty.

PROFESSIONAL OUTCOMES

This degree is designed to equip you with the knowledge and practical experience to be a sustainability professional in business and industry, government, and consulting positions. Potential career outcomes include leadership roles in:

- Carbon management
- Corporate social environmental management and responsibility
- Environmental impact
- Ethical supply chain management
- Green investment

*Subject names and structure may change - please refer to www.bond.edu.au/isda for updated information on program structure.



BACHELOR OF ENVIRONMENTAL SCIENCE (SUSTAINABILITY SCIENCE)

Duration: 2 years full-time (6 semesters); flexible part-time available

Starting: January, May, September

ENTRY REQUIREMENTS

Successful completion of Year 12 or equivalent, or Bond College certificate.

PROGRAM DESCRIPTION

A degree in Environmental Science (Sustainability Science) at Bond University combines the elements of science and technology to produce leading environmental scientists. You will learn about natural resource management and be at the forefront of this rapidly changing industry. This course includes extensive field work so you get to experience the unique Australian environment first-hand, while learning to understand how it functions and how we can manage human impacts on it.

PROGRAM STRUCTURE*

The structure of the Bachelor of Environmental Science (Sustainability Science) is based on a series of theoretical and practical subjects.

University Core Subjects (4)

Refer to page 30

Environmental Science Subjects (16)

- Applied Environmental Chemistry and Physics
- Assessing Australian Environments: Introductory Fieldwork
- Atmospheric and Climate Change Science
- Ecology, Genetics and Evolution
- Environmental Field Analysis of Rainforest and Coastal Regions
- Environmental and Economic Impact Assessment
- Environmental Science
- Introduction to Geographic Information Systems

- Managing Projects
- Marine and Coastal Environments
- Natural Systems
- Pollutants and the Human Environment
- Research Methods for Environmental Science
- Sustainable Development and Society
- Sustainability Science
- Capstone Project

Elective Subjects (4)

Plus four electives chosen from subjects offered by the Institute or any faculty.

PROFESSIONAL OUTCOMES

Environmental scientists are required by government and industry across a wide range of sectors with professional outcomes across:

- Community infrastructure
- Fisheries and agriculture
- Mining and energy
- Planning and property
- Tourism
- Transportation

There are diverse job opportunities in urban and regional Australia, as well as overseas.

*Subject names and structure may change - please refer to www.bond.edu.au/isda for updated information on program structure.



BACHELOR OF PROPERTY AND SUSTAINABLE DEVELOPMENT

Duration: 2 years full-time (6 semesters)

Starting: January, May, September

ENTRY REQUIREMENTS

Successful completion of Year 12 or equivalent, or Bond College certificate.

PROGRAM DESCRIPTION

This degree is designed to equip you with a strong foundation and advanced technical skills for careers within property related industries and professions. You must choose a specialisation from Property Valuation, Urban Development and Sustainability or Construction Management and Quantity Surveying. The final semester is highlighted by an industry sponsored capstone project which integrates the full range of topics covered during the degree.

PROGRAM STRUCTURE*

University Core Subjects (4)

Refer to page 30

Foundation Subjects (4)

- Land Economy and the Environment
- Planning Process
- Sustainable Development and Society
- Understanding Buildings

Specialisations (16)

You must complete all subjects listed from one of the following fields of specialisation:

> Property Valuation

- Business Law
- Construction Technology
- Economics of Sustainable Development
- Introduction to Accounting
- Principles of Property Law
- Principles of Property Valuation
- Property Agency and Marketing
- Property Finance and Taxation
- Property Investment and Development
- Property Investment Valuation
- Property Management
- Property Resource Analysis
- Specialist Valuation
- Statutory Valuation
- Urban Development
- Capstone Project

> Urban Development and Sustainability

- Asset and Facilities Management
- Business Law
- Construction Technology
- Corporate Real Estate
- Economics of Sustainable Development
- Environmental and Economic Impact Assessment
- Introduction to Accounting
- Managing Projects
- Property Agency and Marketing
- Property Finance and Taxation
- Property Investment and Development
- Principles of Property Valuation
- Sustainable Design
- Urban Development
- Capstone Project
- Two elective subjects

Fiona Beaverson

Graduate Investment Management - Lend Lease

- 2007 Enrolled in Bachelor of Property Development and Sustainability one year out of high school. Impressed by Bond's unmatched industry connections.
- 2008 Elected President of the Sustainable Development Students Association (SDSA) and President of the Bond Investment Group (BIG), who were responsible for bringing Sir Richard Branson on campus to speak to students.
- Travelled to Dubai and Abu Dhabi as part of a Bond study tour to observe construction and development practices and visit iconic developments.
- 2009 Completed her Bachelor degree in just over two years at Bond.
- 2010 - 2012 Offered one of only two positions available Australia-wide, working with the Investment Management team in the Sydney head office of one of the world's leading property companies, Lend Lease.



> Construction Management and Quantity Surveying

- Business Law
- Commercial Construction and Engineering
- Construction Site Management
- Construction Tendering and Finance
- Early Estimating and Cost Planning
- Integrated Measurement and Professional Practice
- Managing Projects
- Measurement 1
- Measurement 2
- Project Contract Administration
- Project Delivery Systems
- Project Planning and Scheduling
- Project Structural Engineering
- Sustainable Building Services
- Sustainable Design
- Capstone Project

PROFESSIONAL OUTCOMES

This degree gives you access to a wide range of career paths in property related fields including:

- Construction management
- Development management
- Investment finance
- Project management
- Property development
- Property management
- Property research
- Quantity surveying
- Rural valuation
- Urban valuation

The attributes gained from the degree will allow graduates to work in Australia and overseas.

PROFESSIONAL RECOGNITION

Graduates of Property Valuation and Urban Development and Sustainability specialisations will be professionally recognised by the Royal Institution of Chartered Surveyors and the Australian Property Institute (API). The API accreditation will also allow you to apply for registration as a Certified Practising Valuer upon graduating (conditional upon meeting professional practice requirements).

Students graduating with the Construction Management and Quantity Surveying specialisation will be professionally recognised by the Royal Institution of Chartered Surveyors and the Australian Institute of Quantity Surveyors. In addition, students who successfully complete the Construction Management and Quantity Surveying specialisation will have met the educational requirements set by the Building Services Authority (Queensland) for the granting of an Open Builders' Licence.

*Subject names and structure may change - please refer to www.bond.edu.au/isda for updated information on program structure.



BACHELOR OF URBAN DESIGN AND PLANNING

Duration: 2 years full-time (6 semesters)

Starting: January, May, September

ENTRY REQUIREMENTS

Successful completion of Year 12 or equivalent, or Bond College certificate.

PROGRAM DESCRIPTION

This program provides a foundation in urban design and planning for those intending to establish their careers in a variety of built environment professions involved in creating sustainable cities. This program is taught within the context of both history and contemporary concerns and teaches you to develop practical skills in managing development. You will be taught basic research methods relevant to urban design and planning while also gaining development and property knowledge through studying the specified relevant subjects from those areas. In order to be accredited with the Planning Institute of Australia, you must undertake the Master of Urban Planning.

PROGRAM STRUCTURE*

University Core Subjects (4)

Refer to page 30

Foundation Subjects (4)

- Introducing Urban Design
- Land Economy and Environment
- Planning Process
- Principles of Sustainable Property

Urban Design and Planning Subjects (12)

- City, Culture and Environment
- Development Assessment
- Economic and Social Foundations of Planning
- Environmental and Economic Impact Assessment
- Internship in Sustainable Development
- Introduction to Geographic Information Systems
- Managing Projects
- Strategic Land Use Planning
- Supportive Environments for Active Transport
- Urban Design and Site Analysis Studio
- Urban Development
- Capstone Project

Elective Subjects (4)

Plus four electives chosen from subjects offered by the Institute or any faculty.

PROFESSIONAL OUTCOMES

Successful graduates will achieve a sound knowledge and entry level skills for careers in urban design and planning.

This program also serves as a pathway to the Master of Urban Planning and further studies in related fields including:

- Architecture
- Landscape architecture

PROFESSIONAL RECOGNITION

A combined eight semester program comprising the Bachelor of Urban Design and Planning and eight subjects from the Master of Urban Planning is accredited with the Planning Institute of Australia.

*Subject names and structure may change - please refer to www.bond.edu.au/isda for updated information on program structure.



SOHEIL ABEDIAN SCHOOL OF ARCHITECTURE

BACHELOR OF ARCHITECTURAL STUDIES

Duration: 2 years full-time (6 semesters)

Starting: January

ENTRY REQUIREMENTS

Successful completion of Year 12 or equivalent, or Bond College certificate. All candidates will be interviewed prior to acceptance into the program and all candidates will be asked to provide evidence of their creativity and interest in design and architecture.

PROGRAM DESCRIPTION

Bond's Architectural Studies degree is focused on inspirational learning and teaching environments to equip you with the theory, practical skills and strategic thinking to create sustainable and culturally relevant solutions to our environmental challenges.

You will need to be passionate, imaginative and have excellent problem solving skills to succeed in this field. Study areas within the discipline of architecture include design studies, history and theory of architecture, design communication and city culture and environment.

PROGRAM STRUCTURE*

University Core Subjects (4)

Refer to page 30

Architectural Studies Subjects (12)

- Architectural Design Studio 1
- Architectural Design Studio 2
- Architectural Design Studio 3
- Architectural Design Studio 4
- Architectural Design Studio 5
- Architectural Design Studio 6
- Architecture and Technology
- City, Culture and Environment
- Design Communications 1
- Design Communications 2
- History and Theory of Architecture 1
- History and Theory of Architecture 2

Cross-disciplinary Subjects (8)

- Introducing Urban Design
- Managing Projects
- Structural Engineering
- Sustainable Building Services
- Sustainable Development and Society
- Understanding Buildings
- Two elective subjects

PROFESSIONAL OUTCOMES

A career in architecture is not limited to the creation of buildings and structures. The best architects have the skill to integrate both the art and elements of construction with the visual, tactile and other experiential qualities of space and place. Career opportunities are available in:

- Construction
- Development organisations
- Government
- Infrastructure organisations
- Private architecture practices

PROFESSIONAL RECOGNITION

Bond University is seeking recognition and accreditation of the professional degree from the Architects Accreditation Council of Australia. If you also complete the Master of Architecture**, plus two years of practical architectural experience, you may be eligible to undertake the Architectural Practice Examination for registration with the Board of Architects of Queensland. For further information on accreditation, please contact the Institute of Sustainable Development & Architecture.

*Subject names and structure may change - please refer to www.bond.edu.au/isda for updated information on program structure.

**Master of Architecture program commences in 2013.



EXCHANGE PARTNERS

Bond University has over 60 exchange partnerships with leading universities all over the world. Through our exchange program, you can enrol in our partner universities for a semester, studying courses relevant to your degree. Your results will be credited towards your studies at Bond so that you can still complete your degree in the minimum time.

In addition to enhancing your global outlook, these exchanges build self-confidence, foster independent thinking and serve as the foundation of a global network that can last a lifetime.

FACULTY OF BUSINESS

- University of Waterloo, Ontario, Canada
- Dalian Neusoft Institute of Information, Dalian, China
- Copenhagen Business School, Frederiksberg, Denmark
- EM Strasbourg School of Management, Strasbourg University, Strasbourg, France
- ESCP-EAP European School of Management, Paris, France
- European Business School, Oestrich-Winkel, Germany
- University of Malaysia, Malaysia
- Universidad Iberoamericana, Mexico City, Mexico
- Universidad Panamericana, Guadalajara, Mexico
- Norwegian School of Management - BI, Oslo, Norway
- University of Oslo, Oslo, Norway
- Lund University, Lund, Sweden
- Uppsala University, Uppsala, Sweden
- Koc University, Istanbul, Turkey
- Kingston University, London, UK
- University of Hertfordshire, Hatfield, UK
- Bentley University, Massachusetts, USA
- Clemson University, South Carolina, USA
- Hawaii Pacific University, Hawaii, USA
- Rensselaer Lally School of Management & Technology, New York State, USA
- University of Delaware, Delaware, USA
- Washington College, Maryland, USA

FACULTY OF HEALTH SCIENCES & MEDICINE

- University of Waterloo, Ontario, Canada
- Masaryk University, Brno, Czech Republic
- Tampere University of Technology, Tampere, Finland
- Universite Catholique de Lyon, Lyon, France
- Bonn University, Bonn, Germany
- Universidad Iberoamericana, Mexico City, Mexico
- Universidad Panamericana, Guadalajara, Mexico
- University of Oslo, Oslo, Norway
- Goteborg University, Goteborg, Sweden
- Lund University, Lund, Sweden
- Malmo University, Malmo, Sweden
- Koc University, Istanbul, Turkey
- Kingston University, London, UK
- University of Hertfordshire, Hatfield, UK
- Clemson University, South Carolina, USA
- Hawaii Pacific University, Hawaii, USA
- Stony Brook University, New York, USA
- University of Delaware, Delaware, USA
- Washington College, Maryland, USA

FACULTY OF HUMANITIES & SOCIAL SCIENCES

- Universidad del Desarrollo, Santiago, Chile
- Dalian Neusoft Institute of Information, Dalian, China
- Masaryk University, Brno, Czech Republic
- Abo Akademi University, Abo, Finland
- Tampere University of Technology, Tampere, Finland
- EM Strasbourg School of Management, Strasbourg University, Strasbourg, France
- Universite Catholique de Lyon, Lyon, France
- Bonn University, Bonn, Germany
- Universidad Iberoamericana, Mexico City, Mexico
- Universidad Panamericana, Guadalajara, Mexico
- Maastricht University, Limberg, Netherlands
- NHTV University of Applied Sciences, Breda, Netherlands
- Nanyang Technological University, Singapore
- Goteborg University, Goteborg, Sweden
- Lund University, Lund, Sweden
- Malmo University, Malmo, Sweden
- Koc University, Istanbul, Turkey
- Kingston University, London, UK
- University of Hertfordshire, Hatfield, UK
- Clemson University, South Carolina, USA
- Hawaii Pacific University, Hawaii, USA
- Stony Brook University, New York, USA
- University of Delaware, Delaware, USA
- Washington College, Maryland, USA



FACULTY OF LAW

- Ghent University, Ghent, Belgium
- University of Saskatchewan, Saskatchewan, Canada
- Universidad del Desarrollo, Santiago, Chile
- Fudan University, Shanghai, China
- Aalborg University, Aalborg, Denmark
- EM Strasbourg School of Management, Strasbourg University, Strasbourg, France
- Universite Catholique de Lyon, Lyon, France
- Bonn University, Bonn, Germany
- Freie University of Berlin, Berlin, Germany
- Marburg University, Marburg, Germany
- Universidad Panamericana, Guadalajara, Mexico
- Leiden University, Leiden, Netherlands
- University of Bergen, Bergen, Norway
- Lund University, Lund, Sweden
- Stockholm University, Stockholm, Sweden
- Uppsala University, Uppsala, Sweden
- Koc University, Istanbul, Turkey
- Kingston University, London, UK
- University of Hertfordshire, Hatfield, UK
- Duke University, North Carolina, USA
- University of Southern California, Los Angeles, USA
- University of Texas at Austin, Texas, USA

INSTITUTE OF SUSTAINABLE DEVELOPMENT & ARCHITECTURE

- University of Waterloo, Ontario, Canada
- Universidad del Desarrollo, Santiago, Chile
- Aalborg University, Aalborg, Denmark
- Tampere University of Technology, Tampere, Finland
- University Of Technology, Dortmund, Germany
- University of Malaysia, Malaysia
- Universidad Iberoamericana, Mexico City, Mexico
- Kingston University, London, UK
- Clemson University, South Carolina, USA
- Goteborg University, Goteborg, Sweden
- Hawaii Pacific University, Hawaii, USA
- Rensselaer Lally School of Management & Technology, New York State, USA
- University of Delaware, Delaware, USA

STATE-OF-THE-ART FACILITIES

Studying at Bond University provides you with access to world-class facilities on campus. You will gain a clear advantage through easy access to unparalleled academic, technological and recreational facilities.



TECHNOLOGY

The Balnaves Foundation Multimedia Learning Centre is a technology-rich and architecturally exciting learning environment. It provides you with access to collaborative-friendly study spaces and the latest audio visual and computer technology in a spectacular location. You will have access to a laptop bar, study booths with LCD screens for interactive learning, a collaborative learning room with a Smartboard, HD projector and video conferencing facilities and flexible furniture arrangements to accommodate group work and discussion.



LIBRARIES

Bond University's John and Alison Kearney Library includes over 235,000 volumes and 1,800 journal titles in print, as well as hundreds of DVDs, laserdiscs, CD ROMs, and video and audio cassettes. Access is provided to over 22,000 full-text electronic journals and over 100 journal databases.

Bond University's John and Alison Kearney Law Library has an extensive collection of specialised law materials available for the Australian and selected international legal systems.



SPORTING

Bond University has an active sporting and recreation program on campus housing a fully equipped gymnasium including an Olympic size swimming pool, spa and sauna. Also located on campus are beach volleyball courts, a sports hall for basketball and netball, tennis courts and sports fields.

Students compete in both the summer and winter competitions of the Australian University Games. Some students play competitive sport representing Queensland or Australia in national and international sporting codes or at the Olympics.



CAFÉS AND RESTAURANTS

Bond University offers a range of dining styles on campus. The Brasserie and Café Bond offer buffet, dine-in and takeaway options, Papyrus Café offers dine-in and takeaway and the University Club hosts dine-in lunch overlooking the lake. In addition there are coffee stations situated around campus as well as an independent café, Juicy Bits, offering dine-in by the lake and takeaway. Bond caters to most dietary requirements including gluten free, halal, vegetarian and vegan options.



OUTDOOR AMPHITHEATRE

The ADCO Amphitheatre is quite a feature at Bond University. With a seating capacity of more than 400 and facilities including change rooms, ancillary lighting and state-of-the-art audio and video equipment, the amphitheatre has become a cultural and artistic venue for all Bond students, staff, alumni, family members, friends and the broader Gold Coast community. It is also the venue for the weekly event, Wednesday by the Water, a free barbeque for all Bond students.

STUDENT SERVICES

Bond students benefit from the range of support services available on campus, relating to every aspect of study, medical and personal well-being and career development.

SUPPORT SERVICES

Bond values the cultural differences and diversity brought to the campus by its Australian and international students and makes every attempt to ensure you feel welcome.

COMPUTER SUPPORT

Information Services operates a Service Desk to help students needing computer support. The Service Desk supports all University-owned equipment, as well as providing instruction for connection of privately owned equipment to the network.

COMMERCIAL CENTRE

Your everyday needs are well catered for and easy to access at the on-campus Commercial Centre where you will find ATMs, the University bookshop stocking all required textbooks, a printing shop, a travel agent and an independent coffee shop.

COUNSELLING SERVICES

Qualified student counsellors offer a totally confidential on-campus counselling service to assist with anything from transitioning or returning to university, to study pressures and personal problems. During the course of each semester Counselling Services also run Life One, a weekly life skills program. This program aims to develop positive coping skills and self-awareness complementing academic endeavours to produce more competent, resilient and grounded graduates.

DISABILITY SUPPORT

If you have a disability, illness, injury, mental or health condition that you believe may affect your capacity to complete your studies, exams or assessment tasks, we have a dedicated Disability Office here to help you. They will discuss strategies and / or academic adjustments that may be required for your assistance. If you would like to be considered for support, you will need to complete an application form and submit it with recent and comprehensive specialist documentation to the Disability Office before Week 4 of each semester.

MEDICAL SERVICES

The on-campus Student and Staff Medical Clinic provides general medical treatment, advice and testing, referrals, immunisation and vaccinations. The campus doctor and nurse are available for appointments from Monday to Friday.

PASTORAL CARE

Bond University is a non-denominational campus. However, we have prayer rooms on campus and our Pastoral Care Services can provide information about local worship centres and different faiths.

SAFETY ON CAMPUS

The Bond University campus is patrolled 24 hours a day, seven days a week, by our on-staff security officers and monitored by security cameras. Security officers can be contacted at any hour by phone to assist in an emergency or even just to walk you to your car after dark.

STUDENT LEARNING SUPPORT

This centre is designed to help all students improve their academic skills. You can seek assistance with understanding assignment questions, organisation, structure and referencing, grammar, presentations and maths. Workshops and individual appointments are available.



CAREER DEVELOPMENT SERVICES

The Career Development Centre is staffed by qualified and experienced Employment Services Specialists. They provide a broad range of personalised services including:

- **Careers advice and guidance** - Personal one-on-one appointments with our employment services specialists.
- **Career path planning** - Identifies your individual skills and interests to match them with relevant career pathways.
- **Graduate recruitment resources and assistance** - Puts you in touch with graduate recruitment representatives from leading corporations and agencies.
- **Graduate training program** - A formalised yearly program that will prepare you for the graduate application process and provide you with feedback and coaching to assist you in the process.
- **Careers clinics and seminars** - Held regularly to inspire and motivate you with exciting career suggestions.
- **Resume review** - Advice on how to improve your resume.

The Career Development Centre also coordinates a number of events on campus:

- **Employer visits to campus** - Your chance to meet with prospective employers and learn what influences the selection process.
- **Careers Fair** - Hosted on campus in Semester 1 every year. The Career Development Centre team invites local, national and international employers to promote their employment and internship opportunities and meet with Bond students.

The Centre also provides a broad range of Career Development resources:

- **Online Careers and Employment Portal (CareerHub)** - CareerHub provides a diverse range of careers and employment resources and information, including job advertisements, company profiles, events, news, industry and degree-specific information.
- **Going Global** - An online resource that provides career information for 24 countries.
- **Vault** - An online subscription-based resource used by over 900 universities worldwide.
- **Job Search Guide** - Taking you step-by-step through the career planning and job application process.

In addition to the services provided by the Career Development Centre, Bond students develop vital employment contacts and business networks by liaising with their professors and through access to the high profile industry, government and political identities who regularly visit the campus as guest lecturers.

LIFE AT BOND

Bond has a distinctly global perspective aspiring to a 50 : 50 ratio of Australian to international students. So while studying you will have the opportunity to build a worldwide network that will last a lifetime.

ACCOMMODATION OPTIONS

With the variety of accommodation options, there's something to suit most students' preferences, whether you wish to live on or off campus.

ON-CAMPUS ACCOMMODATION

Bond offers a variety of accommodation options, all within easy walking distance of lecture theatres, Don's, restaurants, Bond's Sports Centre, sporting facilities and faculties.

In addition to the one-on-one academic and personal support available from the live-in team of Senior Resident Fellows, Resident Student Fellows and Tutor Fellows, resident students enjoy a great social life as they mix with classmates at mealtimes and in study sessions. And there's always someone around to talk to in the shared common areas.

All on-campus accommodation is air-conditioned with the following options available:

Single Room - Private ensuite

Single rooms with private ensuite facilities.

Single Room - Share facilities

Single room with shared bathroom facilities.

Single Room - Flat

Single room in a flat comprising two or three bedrooms with shared bathroom and limited cooking facilities.

Twin Share Room - Standard

Twin room with two single beds and a shared ensuite.

Twin Share Room - Premium

Larger shared accommodation with two private rooms and a shared ensuite.

APPLYING FOR ON-CAMPUS ACCOMMODATION

Accommodation on campus is in high demand so it is best to complete your application for on-campus accommodation as soon as it becomes available. To view rooms online and complete your application for on-campus accommodation, visit www.myroom.bond.edu.au.

While residing on campus, it is compulsory to have a dining plan at a cost of \$1,760 per semester which can be used at Café Bond, The Brasserie, Papyrus Café, Don's and the University Club. Flexible dining plans are available allowing students to purchase on-campus meal options. You can top up your dining plan starting at \$110.

Students are required to vacate rooms over the Christmas period. If you choose to stay in University accommodation during April and August vacation periods, you will be charged a weekly rate (please refer to the website for accommodation costs).

For more information about Bond University on-campus accommodation, please visit our website at www.bond.edu.au/accommodation or email student_residences@bond.edu.au.

OFF-CAMPUS ACCOMMODATION

There is a wide range of rental accommodation surrounding the University if you would like to live off campus. Options include houses or apartments on a single or shared basis with weekly rent varying, depending on size, location and the number of bedrooms. You will also need to budget for a security deposit (bond), food, electricity, telephone and cleaning. Students who reside off campus can also purchase a dining plan starting from \$110. For information on dining plans please visit www.bond.edu.au/accommodation.

GETTING AROUND

The University is 30 minutes drive from the Gold Coast Airport and just over one hour from Brisbane International and Domestic Airport. We can arrange for you to be met at either airport and transported to your accommodation. A rail service operates between Robina and Brisbane. Regular bus services operate from the University to the main shopping, residential and tourist areas on the Gold Coast and Brisbane. In addition, there are a number of shops, cafés, restaurants and facilities within walking distance of the campus at Varsity Lakes.





STUDENT EXPERIENCE

Bond has a real community feel and a vibrant student social life. From sporting, social and special interest clubs, as well as a full calendar of events and gatherings, there's so much to enjoy. Once your Student Activities Membership is paid you will have access to a variety of facilities and events on campus as well as discounted prices on some services offered through the Sports Centre.

STUDENT ACTIVITIES MEMBERSHIP

The student activities fee is compulsory for all students and provides you with access to all of our sporting facilities and clubs.

It is used solely to support student services events and activities. The fees are paid each semester. In 2012, the fee for a full-time student was \$263 for the calendar year. Part-time students were required to pay 75 per cent of the fee. The fee is CPI adjusted each year. Payment of this membership gives you access to:

Bond University Sports Centre

- Access to all group exercise classes
- Access to Sports Centre facilities and sports equipment hire
- Discounted prices on massage services
- Discounted prices on personal training packages

Bond University Students Association (BUSA)

- Discounted or waived sports coaching fees
- Discounted or waived ticket prices for BUSA events
- Discounts and special offers from local businesses
- Eligibility for membership of University sporting clubs
- Financial support for teams and individuals travelling to university sports championships and university games
- Membership of BUSA
- Representation on academic and administrative issues
- Support for the creation of new sporting clubs and events

Clubs, Societies and Faculty Student Associations

You can sign up to over 70 student clubs at Club Sign On Day, held the first Friday of each semester. Below are a few examples of clubs and activities that you can access:

- Badminton Club
- Basketball
- Bond Children's Holiday Camp
- Bond Christian Connection
- Canadian Law Students' Association
- Cheerleading
- Clocktower Magazine (Journalism Students' Association)
- Club 20 (Law Students' Association)
- Cricket
- Empire and Palaver (Business Students' Association)
- Free law tutoring (Business, Law and Humanities Students' Association)
- Golf Club
- Horse Riding Club
- International student events (Diwali and Chinese New Year celebrations)
- Make a Difference - Global Health Group
- Muslim Students' Association
- Rowing
- Rugby
- Soccer
- Surfing
- Sustainable Development Students' Association
- Swimming
- Taekwondo
- Tennis
- Theatrical productions (Drama Society)
- Track and field
- United Nations Club
- Waterpolo

Wednesday by the Water

Wednesday by the Water is a weekly student event. Funded by your student activities fee it is a great excuse to be outside enjoying the beautiful blue sky while having a free barbecue lunch with friends by the lake.

Res Wars

Resident students also get to take part in the weekly Res Wars where teams from each residential complex compete in a variety of sporting activities and other traditional university events.



INVESTING IN YOUR FUTURE

Your university degree is one of the most important investments you will make in your lifetime. As with all investments, you must consider the rate of return of both the short term career opportunities and your long term lifetime earnings.

FINANCING YOUR DEGREE

Bond University is a not-for-profit, private independent university which means that fees are directly reinvested to provide outstanding education and facilities for students.

Tuition is charged at the beginning of each semester as you enrol. The fees payable by international students are the same as those for Australian students.

You are encouraged to speak to financial institutions about any services they can provide to help finance study. There are a number of options available to help you finance your educational investment with assistance available from Bond University, government loan programs, personal bank loans and scholarships.

FEE-HELP

If you are an Australian citizen or a holder of a permanent humanitarian visa and have a Tax File Number, you will be able to access the Australian Government's loan scheme called FEE-HELP. FEE-HELP is an interest free loan that helps eligible fee paying students pay their tuition fees. The accumulated debt is indexed annually according to the Consumer Price Index (CPI).

Eligible students who wish to pay for part or all of their tuition fees through FEE-HELP must complete a Request for FEE-HELP Assistance form by the end of the second week of the semester. You can then elect to pay a portion of fees directly to the University, and the remaining debt will be deferred as a loan through the Australian Taxation Office.

If you are using FEE-HELP to cover all tuition costs and don't complete the form by the end of Week 4, you will be liable for payment of all tuition fees.

In 2012, the maximum loan available through FEE-HELP is AUD\$112,134 for Medicine and AUD\$89,706 for all other programs. The loan is repaid to the Australian Taxation Office taking compulsory repayments through the taxation system when your repayment income exceeds AUD\$47,196 in a financial year. A five per cent bonus is granted for any voluntary repayments over \$500 paid directly to the Australian Taxation Office. A loan administration fee of 25 per cent applies for undergraduate programs. Please visit www.studyassist.gov.au for current loan thresholds and to view the government publications on FEE-HELP. Maximum loan limits are adjusted each year.

YOUTH ALLOWANCE / AUSTUDY

If you are an Australian citizen or permanent resident aged 16 years or over and studying full-time, you are eligible to apply for Austudy / Youth Allowance benefits from the Commonwealth Government. For more information, please contact Centrelink directly.

STUDENT OPPORTUNITY FUND

You will have the opportunity to undertake a range of experiences and activities which will enhance your university and learning experience while studying at Bond. To assist you in accessing these opportunities the Student Opportunity Fund was created for students to apply for financial assistance up to \$2,000.

For more information on eligibility and application closing dates, visit www.bond.edu.au/student-opportunity-fund.



LOYALTY DISCOUNTS

A 10 per cent rebate of tuition fees are available to students where an immediate family member is also studying at Bond or has graduated from Bond (conditions apply). For further information, please visit www.bond.edu.au/loyalty-discounts.

LIVING COSTS

You should allow approximately AUD\$6,000 for living costs each semester that you live on the Gold Coast. This may vary depending on your budget for rent, food, transport, clothing, recreation, textbooks, telephone, electricity and other living expenses. Note this figure has been calculated using shared off-campus accommodation. For more information visit www.bond.edu.au/accommodation.

At Bond University you will not need to budget for on-campus parking as it is made available free of charge to all students.

BOOKS AND STUDY MATERIALS

The costs for books, stationery, software and other resources tend to be the same at most universities. Allow around AUD\$300 per semester to help offset this cost, you may choose to sell your old textbooks and buy secondhand at the Bond Book Sale held during Orientation Week before the start of each semester.

SCHOLARSHIPS

One of the key ways Bond University identifies future leaders is through our Scholarship Program. Available to Australian school-leavers and mature-age students, full and part tuition scholarships are awarded to applicants who have demonstrated outstanding academic ability, community involvement and well developed communication skills.

Undergraduate scholarship opportunities (available to students studying in Australia only) include:

Vice-Chancellor's Scholarship (100 per cent)*

A comprehensive academic and personal development program where students are groomed throughout their years at Bond to assume a future leadership role. Available to Year 12 school leavers only.

Corporate Scholarship (50 per cent)*

Sponsored by multi-national corporations in a wide range of industry sectors. Available to Year 12 school leavers only.

Collegiate Partner Scholarship Program (50 per cent)*

Available to Year 12 students attending Bond University Collegiate Partner Schools.

Deans' Scholarship (10 to 40 per cent)**

Awarded by each faculty to students achieving in a specific field of study. Deans' Scholarships are available to both Australian and international students.

Bond University also offers a range of alternative financial assistance options to high achieving students. For more information please contact your Regional Manager.

For more scholarships and further information on the selection criteria, deadlines and conditions, please contact the Regional Manager in your area or visit our website at www.bond.edu.au/scholarships.

*Excluding Bond University's Medicine Program.

**Excluding Bond University's Medicine Program, Doctor of Physiotherapy and Master of Psychology.

APPLICATION AND ENTRY

Bond University's entry criteria are based on more than just final Year 12 results. There is also an emphasis on leadership qualities, extracurricular activities, life experience and potential.

ENTRY INTO BOND

This guide to undergraduate degrees and courses lists information for domestic students (Australian citizens, Australian Permanent Resident Visa Holders and New Zealand citizens, but not Permanent Residence Visa holders of New Zealand). For information relating to international students please refer to Bond University's International Undergraduate Guide.

ACADEMIC ENTRY REQUIREMENTS

Secondary School Leavers

When assessing your eligibility, Bond University does not rely solely on the Overall Position (OP) scores or the Australian Tertiary Admission Rank (ATAR). Rather, the Office of Admissions adopts a broad range of criteria to assess applicants based on their academic achievement, extracurricular involvement and personal attributes, such as outstanding leadership and community involvement qualities.

Previous Tertiary Studies

Students who have successfully completed an Australian Qualifications Framework Certificate IV or above at TAFE or another institution, or who have undertaken at least one semester of a bachelor's degree may be considered for entry into our undergraduate programs. Subjects completed at another university or tertiary institution may qualify as a credit toward your Bond University program. Certified copies of testamurs and academic transcripts, plus detailed subject outlines for each relevant subject should be supplied to your Regional Manager during your interview. For further information on credit towards your degree, go to www.bond.edu.au/credit.

Transferring From Another University or Institution

Applicants wishing to transfer to Bond from another university or institution should contact their local Bond University Regional Manager. For further information on credit towards your degree, go to www.bond.edu.au/credit.

Mature-age Students

Mature-age applicants will be assessed on work experience (please include a current resume), employer references and results from any previous studies*. Applicants may be required to undertake a tertiary entrance examination.

Combined Degrees / Double Degrees

Bond University offers a range of combined degrees and double degrees. For further information on double degrees, please go to page 31. Double degrees are available conditional upon subject availability.

Bond University Bachelor of Medicine Bachelor of Surgery Applications

Applications for the Bachelor of Medicine Bachelor of Surgery must be lodged through Queensland Tertiary Admissions Centre (QTAC) at www.qtac.edu.au. For information on application closing dates, visit www.bond.edu.au/timeline.

To apply for the Bachelor of Medicine Bachelor of Surgery:

1. Lodge an application through QTAC www.qtac.edu.au. You will be required to provide all accompanying documentation, providing evidence of your UMAT score and subject results in Chemistry, English and Maths B.
2. Applications will then be assessed by the Faculty of Health Sciences & Medicine to determine your eligibility based on an assessment of academic performance.
3. Short-listed applicants will be asked to attend an on-campus interview.

*Assessed on a case-by-case basis and not applicable to all programs.



APPLICATION PROCEDURES

For information on the application process, please visit www.bond.edu.au/apply.

DEFERMENT

Once you have been offered a place, you may apply to postpone up to 12 months of study by:

- Completing Bond University's Response to Offer form
- Selecting the deferment option
- Returning it to the Office of Admissions

Deferment is not available to students offered a place in the Bachelor of Medicine Bachelor of Surgery and deferment of scholarships will only be granted in exceptional circumstances.

CLOSING DATES

Bond University accepts applications up to semester commencement*:

2012	2013
January 16	January 14
May 14	May 13
September 10	September 9

*Except for Bachelor of Medicine Bachelor of Surgery. Refer to www.bond.edu.au/timeline for application closing dates.

ESSENTIAL CONTACTS

Australian Regional Managers

To contact your local Regional Manager:

Gold Coast / Northern New South Wales

Phone: 07 5595 4081

Mobile: 0438 732 539

Brisbane / Toowoomba / Sunshine Coast

Phone: 07 5595 1105

Mobile: 0417 757 724

Regional Queensland

Phone: 07 5595 3571

Mobile: 0408 951 122

New South Wales / Australian Capital Territory

Phone: 02 9251 6907

Mobile: 0419 483 340

Victoria / Tasmania

Phone: 03 9650 5028

Mobile: 0419 561 927

South Australia / Western Australia /

Northern Territory

Phone: 07 5595 3571

Mobile: 0408 951 122

Office of Admissions

Bond University Qld 4229

Phone: 1800 074 074 (toll free)

Fax: 07 5595 1015

Email: information@bond.edu.au

www.bond.edu.au



2013 ACADEMIC CALENDAR

Bond University's standard academic calendar consists of three semesters. Each semester normally includes 13 weeks of instruction and one week of examinations.

The calendar below presents the basic chronological structure of the three semesters in an academic year.

EVENT / ACTIVITY	January semester (131)	May semester (132)	September semester (133)
Orientation Week	7 - 11 January	7 - 10 May	2 - 6 September
Registration of new students	7 - 8 January	7 May	2 - 3 September
Registration for study abroad students	7 - 8 January	7 May	2 - 3 September
Last day to add, cancel or substitute subjects without financial penalty	11 January	10 May	6 September
CLASSES COMMENCE	14 January	13 May	9 September
Last day to add, cancel or substitute subjects without financial penalty	25 January	24 May	20 September
Last day to submit Request for FEE-HELP Assistance Form	25 January	24 May	20 September
Late penalty fee of \$250 to cancel subject enrolment (Late Cancellation 1 date)	28 January	27 May	23 September
Graduation Ceremony	9 February	15 June	12 October
Late penalty fee of \$500 to cancel subject to enrolment (Late Cancellation 2 date)	4 February	3 June	30 September
Last withdrawal date	8 February	7 June	4 October
Census date for DEEWR (a)	8 February	7 June	4 October
Examination timetable released	15 February	14 June	11 October
Last day to cancel subject without academic penalty (b)	1 March	28 June	25 October
Opening of enrolments for the following semester	18 March	15 July	11 November
Last day to enrol for the following semester	5 April	2 August	29 November
Examinations commence	12 April	9 August	6 December
Examinations end	20 April	17 August	14 December
SEMESTER ENDS	20 April	17 August	14 December
Examination results available	7 May	2 September	13 January, 2014



SURFERS PARADISE

BROADBEACH

MERMAID BEACH

PACIFIC FAIR



**BOND
UNIVERSITY**

VARSIY LAKES



Office of Admissions

Bond University
Gold Coast Queensland 4229
Australia

Toll free: 1800 074 074
Phone: 07 5595 1024
Fax: 07 5595 1015

Email: information@bond.edu.au

www.bond.edu.au

Australian Admissions Managers

For a list of Bond University representatives
in your state, please go to www.bond.edu.au/australia
or phone toll free 1800 074 074.



CRICOS Provider Code 00017B

BOND UNIVERSITY

OPEN DAY



Find out how you can bring your ambition to life at Bond University's Open Day.

Sunday, August 19
10am - 3pm

www.bond.edu.au/open-day



**BOND
UNIVERSITY**
BRINGING AMBITION TO LIFE

