

# FURTHER EDUCATION 2019

Full-Time Prospectus

"To be excellent - the College of choice"



# Welcome to Coleg Sir Gâr

Coleg Sir Gâr has been meeting the needs of young people for many years, helping them develop their talents and confidence to go on to rewarding careers, or to further pursue academic achievement.

The College prides itself in offering a wide range of courses whether you want to follow traditional academic routes such as A -Levels or prefer to train for work in a chosen field. That's why at Coleg Sir Gâr, we offer vocational paths such as NVQs in Catering and Hospitality, Health and Social Care, Hair and Beauty, Plumbing, Painting and Decorating and much more. This way you can gain the practical skills and valuable experience which will help you towards an accredited qualification as well as prosperous employment.

## **FIND OUT MORE**

Why not find out more about us and see what else we have to offer you?

Course outlines are contained in the Prospectus and full information is available to view on our website, but for those who want to find out more before making up their mind, staff are always available to discuss courses and student support services.

Open Evenings also provide a great opportunity to visit the college, see the facilities and talk in depth to staff about the courses and the complete learning experience at Coleg Sir Gâr.

## **OPEN EVENINGS 2011/12**

Thursday 6 October 2011, Tuesday 17 January 2012, Wednesday 21 March 2012, Monday 21 May 2012, Monday 2 July 2012.  
5.30pm - 8.00pm. All Campuses.

## **HOW TO APPLY**

Applications for Full-time Further Education courses should be made to the college either on-line or by application form which can be obtained by contacting the Admissions Department by telephone or e-mail.

## **CONTACT US**

For enquiries please phone the Admissions Department ☎ 01554 748179. Alternatively e-mail: [admissions@colegsirgar.ac.uk](mailto:admissions@colegsirgar.ac.uk) or write to: The Admissions Department, Coleg Sir Gâr, Graig Campus, Sandy Road, Llanelli, SA15 4DN.

## **LEARNER SUPPORT**

The College has an excellent reputation for the quality and range of support that it offers students. Learner Support has a team of committed and well qualified staff to help students get the most of their time at college.

## **CAREERS ADVICE**

One of the most difficult choices you will have to make is which career path to choose, or perhaps which university to apply for. Coleg Sir Gâr can help you through these decisions, and to help you get where you want to be. We have a team of friendly advisers who will take you through the decisions you may need to make, and will also help you through any administrative tasks such as writing a CV or applying for university. Contact ☎ 01554 748112.

## LIAISON & SUPPORT OFFICERS

There are a number of different awards, funds and grants available at the college, including scholarships. Our student support team are available to help you, offering advice and guidance on available funding to help manage your finances. Our financial support officers offer a friendly and informal service, assisting with childcare costs as well as personal welfare issues and accommodation for students. Contact: Debbie Williams (Graig) ☎ 01554 748036; Jamie Davies (Ammanford & Gelli Aur) ☎ 01554 748305; Filipe Nunes (Pibwrlwyd & Jobs Well) 01554 748070.

## USEFUL CONTACT DETAILS

Student Finance Wales 0845 602 8845  
www.studentfinancewales.co.uk  
For further advice on available funding, please contact our funding advisers ☎ 01554 748036 / 748305 / 748070.

## COUNSELLING

The College employs a qualified and experienced counsellor who offers a confidential service to students on all campuses. Counselling can offer you the time to talk about anything that might be worrying you and it can help you explore your thoughts and feelings in a non-judgemental setting. You will not be judged or told what to do but you will be supported in working out your own solutions and encouraged to talk through your problems in an informal setting. This service is available free of charge to all students.  
☎ 01554 748112.

## COLLEGE TRANSPORT

In conjunction with Carmarthenshire County Council the College provides transport for full time students living on a college transport route within the county of Carmarthenshire. For further information please contact the transport department ☎ 01554 748025.

## LEARNING CENTRES & LIBRARIES

There are learning centres at four of our campuses, at Graig, Pibwrlwyd, Ammanford and Gelli Aur and they are all open for use by any of our students. They all offer a wide range of multimedia resources as well as a substantial book stock, newspapers, videos and periodicals and on-line information. If the material you need should be at another campus then we provide an inter-library loan system to ensure you have access to the resource you need.

## STUDENT UNION

We recognise that as part of your college experience, it's important to enhance your social life and take part in fun events. Our Liaison & Support Officers will help you meet new people and develop extra-curricular activities and generally get involved in the college social scene. The Students Union is an organisation run by students, and as an enrolled student at the college, you are automatically eligible to apply for a NUS card.

## SUPPORT FOR STUDENTS WITH LEARNING DIFFICULTIES, DISABILITIES AND MENTAL HEALTH DIFFICULTIES

The Learning Support Team at the college provides an extensive range of both human and technical support for all students requiring assistance, whether arising from a learning difficulty (eg. Dyslexia, Dyspraxia); physical disability (eg. arthritis); sensory impairment (visual or hearing); mental health difficulty (eg. depression); or any other problem, which has a long term, adverse affect on their ability to study.

All full time students undergo a comprehensive screening and assessment when they start their course to ascertain their needs. Learning Support is available on all five campuses to any student requiring help with coursework and assignments. The service is offered in a variety of different ways, including individual support, group work and team teaching. Students may drop in, be timetabled or make appointments on a weekly basis. A bilingual service is available. The team also has a substantial number of learning support assistants and non-medical helpers, who support students on a 1-1 or small group basis within the classroom environment. Technical support comes in the form of digital recorders and laptops, with specialist software, which are available on loan to students in further education. Students studying at a higher education level will be assisted in the pursuit of the Disabled Students' Allowance, which helps fund technical equipment and human support. If you require any additional information, please contact Gail Bowen, Learning Support Manager ☎ 01554 748376.

To find out more about the services offered by Student Services, please contact us ☎ 01554 748112 or e-mail:

✉ [mandy.mclean@colegsirgar.ac.uk](mailto:mandy.mclean@colegsirgar.ac.uk)

## COURSE FEES

There are no fees for full-time courses unless stated. However some courses carry additional costs, such as uniforms and equipment, but this will be discussed at interview.

## BILINGUALISM POLICY

Coleg Sir Gâr has adopted the principle that in the achievement of its Mission as a local provider of Further and Higher Education and Training it will treat the Welsh and English languages on a basis of equality. The College's mission outlines its commitment to both individuals and organisations within Carmarthenshire and its surrounding communities, to develop their capability and potential, addressing the needs of learners in both Welsh and English.

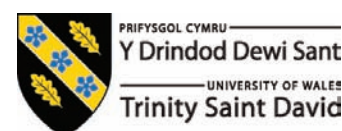
## ESSENTIAL SKILLS WALES

Coleg Sir Gâr is committed to providing opportunities for learners, to develop their Essential Skills beyond their level at entry to the College and to gain external accreditation. Essential Skills are practical, applied skills relevant to all learners which enable effective learning, the achievement of qualification aims and progression to further study and/or employment. The College will ensure that these opportunities enable development that is sufficient for both the demands of the learner's programme and for their everyday lives.

## CONTENTS

A Levels & Access	4
Art & Design	12
Built Environment & SkillBuild	16
Business & Education	22
Care, Childcare, Entry & Counselling	26
Computing & Public Services	30
Creative Industries, Sport, Leisure & Tourism	34
Engineering	40
Hair, Beauty & Catering	46
Landbased	52
Apprenticeships	56
Traineeships	58
Pathways to Apprenticeships	60

**Coleg Sir Gâr is working in partnership with The University of Wales, Trinity Saint David, as a Dual Sector University to serve the needs of communities in South West Wales.**



This prospectus is available in alternative formats upon request. Please contact 01554 748112.

Whilst every effort has been made to ensure the accuracy of information contained within this prospectus, Coleg Sir Gâr expressly excludes any representations (other than representations made fraudulently) or warranties (whether express or implied) in respect of such information and liability including direct, special, incidental or consequential or consequential losses arising out of reliance on such information, to the fullest extent allowable under the law. Please note that College courses may change in name and content as awarding bodies update their curriculum.



# A Levels & Access

We set high standards and pursue excellence throughout the Faculty; the aim of the majority of our students is to go and study for higher qualifications at various national universities including Oxford and Cambridge.

Other students go directly into industry to develop their careers after completing their chosen qualifications. Some students just wish to further their interest in a particular subject area on one or more of our part-time courses. The AS and A level courses are based at the Graig campus, Llanelli. There are over 30 AS/A level subjects available in a variety of combinations.

Our Access courses help those who either want a second chance in education or a change in career. They are an alternative method of achieving the entry requirements needed by mature students to progress to University level study.

## GHOST WATCH

Aspiring writers at Coleg Sir Gâr's Graig campus have been working with Ghost Watch Wales to research ideas for their studies in creative writing.

A-level English language students from Llanelli spent a day with Geraint Hopkins at Margam Park to research its history and to inspire them in their creative writing studies which include gothic and supernatural fiction. "The trip was very enjoyable," said 17 year-old former Bryngwyn Comprehensive School head boy, Matthew Cooke. "It's very useful to be motivated outside the classroom and I think it's given us some great ideas to be starting with."

English language lecturer Jon Evans said: "Geraint from Ghost Watch Wales has really shown a lot of enthusiasm and knowledge in the subject area and has given his time freely to encourage the students in their work and last year, a similar visit resulted in some excellent work being submitted for examination."

## Access to Higher Education

- ◆ Access to Higher Education (Humanities)
- ◆ Access to Higher Education (Nursing & Health-Related Professions)
- ◆ Access to Higher Education (Science and Mathematics)

## AS & A Levels

- |                                   |  |  |
|-----------------------------------|--|--|
| ◆ Art, Craft & Design             | ◆ Geography                                      | ◆ Photography Lens & Light Based Media |
| ◆ Biology                         | ◆ Geology  | ◆ Physical Education                   |
| ◆ Business Studies                | ◆ Government and Politics                        | ◆ Physics                              |
| ◆ Chemistry                       | ◆ Graphic Communication                          | ◆ Psychology                           |
| ◆ Computing                       | ◆ History  | ◆ Religious Studies                    |
| ◆ Design & Technology             | ◆ Human Biology                                  | ◆ Sociology                            |
| ◆ Drama and Theatre Studies       | ◆ Information and Communication Technology (ICT) | ◆ Spanish                              |
| ◆ English Language and Literature | ◆ Italian  | ◆ Textiles                             |
| ◆ English Literature              | ◆ Law  | ◆ Welsh (Second Language)              |
| ◆ Film Studies                    | ◆ Mathematics                                    | ◆ World Development                    |
| ◆ French                          | ◆ Media Studies                                  |  |

## Welsh Baccalaureate

- ◆ The Welsh Baccalaureate
- ◆ Welsh Baccalaureate Qualification WBQ at Advanced Level

# ACCESS TO HIGHER EDUCATION

## ACCESS TO HIGHER EDUCATION (HUMANITIES)

### Course Features:

- Access to Humanities is ideal for those who wish to study humanities based subjects at university level eg. social work, psychology, sociology, law, and history.
- Achieving the Access Diploma is not based upon passing examinations and the course is assessed through a variety of assignments, taking the form of essays, presentations and reports.
- The course benefits from a range of interesting topic areas taught by well qualified, supportive and enthusiastic staff.
- In addition to these, separate lessons are timetabled to build the key skills of communication, numeracy and ICT up to the required standard for university entry.

### Entry Requirements:

No formal qualifications are required, but entry is subject to interview.

**Campus:** Graig  
**Course Length:** 1 Year

## ACCESS TO HIGHER EDUCATION (NURSING & HEALTH-RELATED PROFESSIONS)

### Course Features:

- Achieving the Access Diploma is not based upon passing examinations and the course is assessed through a variety of assignments, taking the form of essays, presentations and reports.
- The course benefits from a range of interesting topic areas taught by well qualified, supportive and enthusiastic staff.
- This course covers Anatomy & Physiology, Microbiology, Chemistry, Health, Law, Medical Ethics, Sociology and Psychology. There are also key skills in Numeracy, Communications and Information Technology.
- In addition to these, separate lessons are timetabled to build the key skills of communication, numeracy and ICT up to the required standard for university entry.
- Support, guidance and regular feedback provided in personal tutorials to encourage and motivate students who may initially lack confidence in the classroom. Excellent opportunities to progress in the Health Care sector.

### Entry Requirements:

No formal qualifications are required although some are a distinct advantage. Entry is subject to interview and assessment.

**Campus:** Graig  
**Course Length:** 1 Year



## ACCESS TO HIGHER EDUCATION (SCIENCE AND MATHEMATICS)

### Course Features:

- The course is flexible and credit based allowing students to agree a programme of study to meet their individual requirements.
- Courses are taught by friendly and experienced staff who provide support, guidance and regular feedback in personal tutorials to encourage and motivate students who may initially lack confidence in the classroom.
- Develops mathematical skills to a high standard, under close support and guidance.

### Entry Requirements:

No formal qualifications are required but entry is subject to interview.

**Campus:** Graig  
**Course Length:** 1 Year

[www.colegsirgar.ac.uk](http://www.colegsirgar.ac.uk)

# GENERAL EDUCATION

## ART, CRAFT & DESIGN - AS & A LEVELS

### Course Features:

- There is a strong emphasis on drawing work as a starting point
- Working from original source material is critical
- All written work is integrated into practical work
- A range of media, processes and techniques are explored throughout the course
- Individual development is greatly encouraged
- All students are encouraged to produce independent and original work
- Students are encouraged to be creative and imaginative
- Personal exploration of ideas through direct observational drawing
- Students will have the opportunity to explore a range of disciplines including: Painting, drawing, 3D work, textiles, graphic design and illustration, printmaking.
- Communicate ideas and express feelings
- Presentation of practical and written work in an imaginative and creative manner
- Includes visits to galleries, museums and exhibitions

### Entry Requirements:

Normally students 16 - 19 years of age will require a minimum of 6 GCSEs at grades A\* - C, one of which must be either GCSE Mathematics or GCSE English Language. Those wishing to study Art should have a grade C or above in a related subject and / or a portfolio of work. Entry for mature students without formal qualifications is at the discretion of the Faculty.

**Campus:** Graig  
**Course Length:** AS - 1 Year. Full A Level - 2 Years.

## BIOLOGY - AS AND A LEVELS

### Course Features:

- Encourages a life-long interest in living organisms and respect for all forms of life
- Practical work in all units
- Colour coded booklets which include past paper questions for revision, available for all units
- Tests and revision exercises provided for all topics in each unit

### Entry Requirements:

Normally students 16 - 19 years of age will require a minimum of 6 GCSEs at grades A\* - C, one of which must be either GCSE Mathematics or GCSE English Language and a minimum of Grade C in Biology or CC in Double Award Science (higher tier). Entry for mature students without formal qualifications is at the discretion of the Faculty.

**Campus:** Graig  
**Course Length:** AS - 1 Year. Full A Level - 2 Years.

## BUSINESS STUDIES - AS AND A LEVELS

### Course Features:

- The course encourages students to adopt an investigative approach, applying knowledge of the real world.
- Successful students will be able to apply knowledge of Business theories and concepts to understanding problems and potential solutions.
- Students will sit assessment units in January and June. AS students will sit Unit 1 in January and Unit 2 in June. There will be an opportunity for AS students to resit modules if they wish.
- The course encourages the practical application of business concepts by providing students with the opportunity to explore events in the business world as a means of reinforcing understanding of theories and concepts.
- The course is intended to promote active rather than passive understanding as it considers business theories and concepts within a framework that provides reasons for studying the subject.
- This course focuses on the contemporary business world as it has been devised to reflect contemporary issues in the business world, eg. entrepreneurship, customer service and emerging markets.
- The theme of change is central to Unit 4 and is further emphasised by the inclusion of topics such as globalisation and migration.

### Entry Requirements:

Normally students 16 - 19 years of age will require a minimum of 6 GCSEs at grades A\* - C, one of which must be either GCSE Mathematics or GCSE English Language. Entry for mature students without formal qualifications is at the discretion of the Faculty.

**Campus:** Graig  
**Course Length:** AS - 1 Year. Full A Level - 2 Years.



## CHEMISTRY - AS AND A LEVELS

### Course Features:

- Application of everyday chemistry
- Links to current affairs and developments in Science
- Develops practical skills commensurate with the qualification

### Entry Requirements:

Normally students 16 - 19 years of age will require a minimum of 6 GCSEs at grades A\* - C, one of which must be either GCSE Mathematics or GCSE English Language. Entry for mature students without formal qualifications is at the discretion of the Faculty.

**Campus:** Graig

**Course Length:** AS - 1 Year. Full A Level - 2 Years.

## COMPUTING - AS AND A LEVELS

### Course Features:

- Programming in Pascal.
- Practical work based on everyday applications of Computing
- Well equipped, modern computer laboratories

### Entry Requirements:

Computing can be taken at AS Level without prior study of the subject. Normally students 16 - 19 years of age will require a minimum of 6 GCSEs at grades A\* - C, one of which must be either GCSE Mathematics or GCSE English Language. Entry for mature students without formal qualifications is at the discretion of the Faculty.

**Campus:** Graig

**Course Length:** AS - 1 Year. Full A Level - 2 Years.

## DESIGN & TECHNOLOGY AS & A LEVELS

### Course Features:

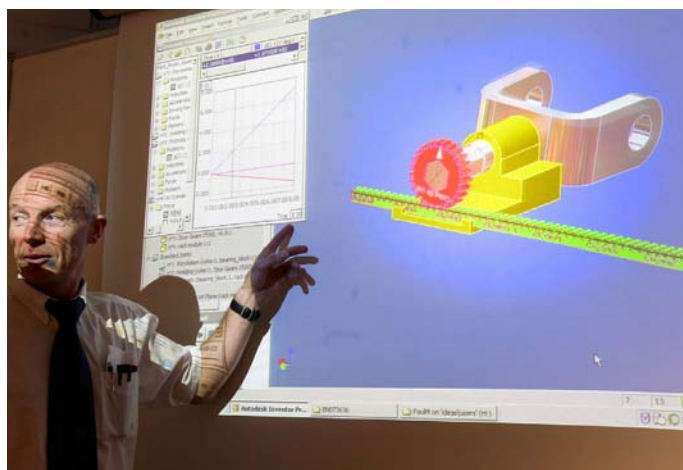
- Design and Technology is about the application of engineering skills, knowledge and understanding.
- The course is delivered in a practical way to enable candidates to recognise the purpose of knowledge and to be able to draw on it in practical solutions
- The course encourages students to adopt an investigative approach, applying knowledge of engineering and the real world.
- Coursework is intended to provide students with an opportunity to apply engineering theories and concepts.
- Successful students will be able to apply knowledge of Design and Technology to understanding engineering problems and potential solutions.
- AS level students complete an examination paper (unit 1) and a design and make task (unit 2). A level students complete an examination paper (unit 3) and a major project (unit 4).

### Entry Requirements:

Normally students 16 - 19 years of age will require a minimum of 6 GCSEs at grades A\* - C, one of which must be either GCSE Mathematics or GCSE English Language. Entry for mature students without formal qualifications is at the discretion of the Faculty.

**Campus:** Graig

**Course Length:** AS - 1 Year. Full A Level - 2 Years.



## DRAMA AND THEATRE STUDIES - AS AND A LEVELS

### Course Features:

- The course encourages students to attend as many live performances as possible throughout their time on the programme.
- The students are fully integrated into the performing arts department and have the opportunity to be involved in extra curricular sessions, workshops and productions.
- The course is active, practical, thought-provoking and, above all, enjoyable.
- The course allows students the opportunity to carry out practical work in a realistic environment as well as classwork
- The course helps place students skills within the context of World Theatre through the study of plays, their interpretation and the means of bringing them alive from the page to the stage



- The course follows a programme of study which involves: progression to both Higher Education and Employment; develops Key Skills; and allows students to gain confidence through independent learning skills
- The course adds a Welsh dimension by the study or performance of Anglo-Welsh playwrights through practical work in English
- The course helps students gain the knowledge, understanding and skills required to succeed in a whole range of activities

### Entry Requirements:

Normally students 16 - 19 years of age will require a minimum of 6 GCSEs at grades A\* - C, one of which must be either GCSE Mathematics or GCSE English Language. Students must also show evidence of an enthusiasm for Drama and English. Entry for mature students without formal qualifications is at the discretion of the Faculty.

**Campus:** Graig

**Course Length:** AS - 1 Year. Full A Level - 2 Years.

## ENGLISH LANGUAGE AND LITERATURE - AS AND A LEVELS

### Course Features:

- A grounding in the technical aspects of language study, improving the precision of students' own writing and their confidence in using and discussing particular language features.
- A significant creative writing component at both AS and A2.
- Discussion of a wide range of written and spoken texts.
- A range of practical activities and external visits to encourage students' active participation and provide a stimulus for their own writing
- Fifty percent of the course is based on literary texts, so students extend their acquaintance with poetry, drama and prose texts. The literature components of the course leave open the option of Literary Studies at university as well as the option of courses in Language and Linguistics.
- The course combines well with other humanities subjects, but is also useful for science students who need to continue to develop their communication skills.
- Other combinations work very well with English Language and Literature, particularly the study of foreign languages and Media and Film Studies.

### Entry Requirements:

Normally students 16 - 19 years of age will require a minimum of 6 GCSEs at grades A\* - C, one of which must be either GCSE Mathematics or GCSE English Language, (ideally, a minimum of Grade B in English Language). Entry for mature students without formal qualifications is at the discretion of the Faculty.

**Campus:** Graig

**Course Length:** AS - 1 Year. Full A Level - 2 Years.

## ENGLISH LITERATURE - AS AND A LEVELS

### Course Features:

- Wide reading of a range of texts from medieval to modern, across the key genres of Prose, Poetry and Drama.
- The development of Key Skills Communication at level three. In particular, discussion, presentation and formal essay writing. The development of transferable skills.
- External activities including theatre visits and seminars at Higher Education providers.

**Entry Requirements:**

Normally students 16 - 19 years of age will require a minimum of 6 GCSEs at grades A\* - C, one of which must be either GCSE Mathematics or GCSE English Language. Entry for mature students without formal qualifications is at the discretion of the Faculty.

**Campus:** Graig

**Course Length:** AS - 1 Year. Full A Level - 2 Years.

**FILM STUDIES - AS AND A LEVELS****Course Features:**

- Opportunities to study a wide range of films from various genres and eras.
- Candidates learn the basics of cinematography and how meaning is created through the juxtaposition of sound and image.
- Candidates will develop an understanding of film as a 'business' and how commercial aspects impact on creative output.
- Domestic British product is studied at AS Level. Foreign films are mainly studied at A Level.
- Opportunities to engage in debate about film censorship, feminism in film, shocking cinema and numerous other related topics.
- Ability to apply skills learned for film reading to titles of the students' own choosing.
- Opportunities to develop students' own creative skills in the production of practical work.

**Entry Requirements:**

Normally students 16 - 19 years of age will require a minimum of 6 GCSEs at grades A\* - C, one of which must be either GCSE Mathematics or GCSE English language. Applicants will need to demonstrate an interest in film and cinema. Entry for mature students without formal qualifications is at the discretion of the faculty.

**Campus:** Graig

**Course Length:** AS - 1 Year. Full A Level - 2 Years.

**FRENCH - AS AND A LEVELS****Course Features:**

- Excellent results
- Small groups allow individual attention
- A wide range of contemporary, cultural and social topics are studied
- Candidates choice of oral topic possible at A Level
- Almost exclusive use of French in classroom activities
- Candidates have independent control of listening material in exam and use of language laboratory and self-study packs
- Excellent resources available in Learning Resource Centre and library including language magazines, tapes, videos and Language computer programmes
- Grammar is dealt with in a supportive and systematic way
- Excellent career prospects for language graduates

**Entry Requirements:**

Normally students 16 - 19 years of age will require a minimum of 6 GCSEs at grades A\* - C, one of which must be either GCSE Mathematics or GCSE English Language. Ideally their profile should also include GCSE French at Grade B or above. Entry for mature students without formal qualifications is at the discretion of the Faculty.

**Campus:** Graig

**Course Length:** AS - 1 Year. Full A Level - 2 Years.

**GEOGRAPHY - AS AND A LEVELS****Course Features:**

- Students develop knowledge and understanding of the world at local, regional and global levels
- Makes students aware of the importance of sustainable development
- Provides an understanding of the inter-relationship between humans and the physical environment
- It enables students to participate in the learning process through fieldwork and practical work
- Can support a personal sense of citizenship and the ability to make informed judgements through critical and sensitive study with awareness of others
- Enables students to develop their own values and understanding of the views and perceptions of people involved in decision making processes especially those associated with the use and management of resources and environment.

**Entry Requirements:**

Normally students 16 - 19 years of age will require a minimum of 6 GCSEs at grades A\* - C, one of which must be either GCSE Mathematics or GCSE English Language. GCSE Geography is preferable. Students without GCSE Geography may be allowed to enroll on the course based on a discussion with the course lecturer first. Entry for mature students without formal qualifications is at the discretion of the Faculty.

**Campus:** Graig

**Course Length:** AS - 1 Year. Full A Level - 2 Years.

**GEOLOGY - AS AND A LEVELS****Course Features:**

- Annual fieldtrip to the Isle of Arran off the coast of Scotland.
- Annual fieldtrip to Jurassic Coast in Dorset.
- Fieldwork visits to closer locations such as the Gower Peninsula and Pembrokeshire.
- Access to an extensive rock, mineral and fossil collection.

**Entry Requirements:**

Geology can be taken at AS Level without prior study of the subject. Normally students 16 - 19 years of age will require a minimum of 6 GCSEs at grades A\* - C, one of which must be either GCSE mathematics or GCSE English language. Entry for mature students without formal qualifications is at the discretion of the faculty.

**Campus:** Graig

**Course Length:** AS - 1 Year. Full A Level - 2 Years.





## GOVERNMENT AND POLITICS - AS AND A LEVELS

### Course Features:

- Develop an interest in and an understanding of the systems of government and the political issues of Britain and America
- Encourages a knowledge of contemporary affairs
- Taught in modern, well equipped classrooms

### Entry Requirements:

Normally students 16 - 19 years of age will require a minimum of 6 GCSEs at grades A\* - C, one of which must be either GCSE Mathematics or GCSE English Language. An interest in current affairs would be an advantage. Entry for mature students without formal qualifications is at the discretion of the Faculty.

**Campus:** Graig

**Course Length:** AS - 1 Year. Full A Level - 2 Years.

## GRAPHIC COMMUNICATION - AS AND A LEVELS

### Course Features:

- Research using drawing and photographs
- Encourages creative development and innovation
- Explore media, including Digital Adobe Photoshop, Paint, Printmaking
- Communicate visually
- Working to set briefs
- Practical and written work are integrated
- Explore a variety of media, materials and techniques
- Develop work and ideas in individual manner
- Take an independent approach to study
- Create work for set context

### Entry Requirements:

Normally students 16 - 19 years of age will require a minimum of 6 GCSEs at grades A\* - C, one of which must be either GCSE Mathematics or GCSE English Language and including a minimum of Grade C in Graphics or Art and Design or a portfolio of work. Entry for mature students without formal qualifications is at the discretion of the Faculty.

**Campus:** Graig

**Course Length:** AS - 1 Year. Full A Level - 2 Years.

## HISTORY - AS AND A LEVELS

### Course Features:

- The department consistently receives outstanding exam results
- There are opportunities for lively class discussions and organised visits
- Coursework provides the opportunity for real historical research
- The subject develops skills that are highly valued in many professions
- Very high percentage of students go on to study in University and many do History Degrees
- The Department organises visits and theatre trips as appropriate

### Entry Requirements:

Normally students 16 - 19 years of age will require a minimum of 6 GCSEs at grades A\* - C, one of which must be either GCSE Mathematics or English Language and History. Students who have not taken GCSE History but have a high level of ability in related subjects will be considered for entry. Entry for mature students without formal qualifications is at the discretion of the Curriculum area.

**Campus:** Graig

**Course Length:** AS - 1 Year. Full A Level - 2 Years.

## HUMAN BIOLOGY - AS AND A LEVELS

### Course Features:

- Develop essential knowledge and understanding of biological facts, concepts and principles.
- Recognise the value and responsible use of biology in society
- A suitable preparation for biological studies in Higher Education

### Entry Requirements:

Normally students 16 - 19 years of age will require a minimum of 6 GCSEs at grades A\* - C, one of which must be either GCSE Mathematics or GCSE English Language and a minimum of Grade C Biology or CC in Double Award Science (higher tier). Entry for mature students without formal qualifications is at the discretion of the Faculty.

**Campus:** Graig

**Course Length:** AS - 1 Year. Full A Level - 2 Years.

## INFORMATION AND COMMUNICATION TECHNOLOGY (ICT) - AS AND A LEVELS

### Course Features:

- The theory will be assessed through a written paper in May
- Project work based on everyday applications, such as Word Processing, Desk Top Publishing, Presentations, Databases and Spreadsheets.
- AS Level can be taken without prior study of the subject
- Well equipped, modern computer laboratories

### Entry Requirements:

ICT can be taken at AS Level without prior study of the subject. Normally students 16 - 19 years of age will require a minimum of 6 GCSEs at grades A\* - C including Maths and English. Entry for mature students without formal qualifications is at the discretion of the Faculty.

**Location:** Graig

**Course Length:** AS - 1 Year. Full A Level - 2 Years.

## ITALIAN - GCSE AND AS LEVEL (DAY)

### Course Features:

- Very good results in both years
- Small groups allow individual attention
- A wide range of contemporary cultural and social topics are studied
- Candidates choice of oral work at AS rooted in the target language
- No coursework element in Year 1 or 2
- Almost exclusive use of target language in class and exams
- Candidates have independent control of listening material at AS level and use of language laboratory and self-study packs
- Excellent resources available in Learning Resource Centre and library, including language magazines, tapes and videos
- Grammar is dealt with in a systematic and supportive way

### Entry Requirements:

Normally students 16 - 19 years of age will require a minimum of 6 GCSEs at grades A\* - C, one of which must be GCSE Mathematics or GCSE English Language. There must also be some evidence of linguistic ability. Entry for mature students without formal qualifications is at the discretion of the Faculty.

**Campus:** Graig

**Course Length:** GCSE - 1 Year. AS - 2 Years.



## LAW - AS AND A LEVELS

### Course Features:

- Examines the processes and structures which create, administer and change the law
- Discussions surrounding current legal affairs
- Many educational visits to places of interest in Law such as the local courts and The Old Bailey in London
- Guest speakers by local solicitors, magistrates and the CPS
- Attendance at A Level Law conferences at Swansea University

### Entry Requirements:

Normally students 16 - 19 years of age will require a minimum of 6 GCSEs at grades A\* - C, one of which must be either GCSE Mathematics or GCSE English Language. Students should also have an interest in legal issues and current affairs. Entry for mature students without formal qualifications is at the discretion of the Faculty.

**Campus:** Graig

**Course Length:** AS - 1 Year. Full A Level - 2 Years

## MATHEMATICS - AS AND A LEVELS

### Course Features:

- Designed to give a thorough basic training in the core disciplines of algebra, calculus, trigonometry and analytical geometry
- The specification links well with that for A Level physics and the sciences in general
- No coursework
- Traditionally and rigorously taught course
- The course is vastly different from GCSE in terms of the level of difficulty and the amount of work covered
- The most crucial part of GCSE work needed for A level success is a very high standard of ability in algebra
- Six external papers for A level qualification
- Three external papers for an AS qualification

### Entry Requirements:

Normally students 16 - 19 years of age will require a minimum of 6 GCSEs at grades A\* - C, one of which should be either GCSE Mathematics or GCSE English Language. Ideally students wishing to study A Level Maths should have followed the higher tier syllabus at GCSE and gained a minimum of grade B and ideally an A or A\*. Entry for mature students without formal qualifications is at the discretion of the Faculty.

**Campus:** Graig

**Course Length:** AS - 1 Year. Full A Level - 2 Years

## MEDIA STUDIES - AS AND A LEVELS

### Course Features:

- Learners are exposed to a range of Media Texts, both print-based and audio-visual.
- Provides opportunity to develop strong communication skills - both oral and written.
- Teaching staff exhibit high level of expertise in Media/Film.
- Range of both examination and coursework based assessment.
- Provides a sound basis for progression into Higher Education.
- Increases understanding of the world in which we live.
- Provides opportunity to develop practice-based skills.
- The course is delivered through a range of teaching styles.
- Offers a creative and dynamic learning experience.

### Entry Requirements:

Normally students 16 - 19 years of age will require a minimum of 6 GCSEs at grades A\* - C including English Language and/or Media Studies at a minimum of grade B. Students should also have an interest in television, journalism, media and films. Entry for mature students without formal qualifications is at the discretion of the Faculty.

**Campus:** Graig

**Course Length:** AS - 1 Year. Full A Level - 2 Years

## PHOTOGRAPHY LENS & LIGHT BASED MEDIA - AS AND A LEVELS

### Course Features:

- This course incorporates analogue and digital means, and artistic-creative activities not necessarily related to mainstream photography, including photo-copying, projecting and mobile photo-phones
- Students would be expected to cover some or all of these specific image generation and production processes related to Photographic art through observation and recording information
- Use of digital and manual methods of photography; Digital enhancement; Portraiture; Landscape; Fashion; Documentary; Experimental or Fine Art

### Entry Requirements:

Normally students 16 - 19 years of age will require a minimum of 6 GCSEs at grades A\* - C, one of which must be either GCSE Mathematics or GCSE English Language. Those wishing to study Photography should have a grade C or above in a related subject and/or a portfolio of work. Entry for mature students without formal qualifications is at the discretion of the Faculty.

**Campus:** Graig

**Course Length:** AS - 1 Year. Full A Level - 2 Years

## PHYSICAL EDUCATION - AS AND A LEVEL

### Course Features:

- Some aspects of practical based assessment.
- Diverse range of practical activities offered for assessment to meet varied needs of students.
- Staff teaching on the course are linked to Coleg Sir Gar sports academy.

### Entry Requirements:

Normally students 16 - 19 years of age will require a minimum of 6 GCSEs at grades A\* - C, one of which must be either GCSE mathematics or GCSE English language and a minimum of Grade CC in science. Entry for mature students without formal qualifications is at the discretion of the faculty.

**Campus:** Graig

**Course Length:** AS - 1 Year. Full A Level - 2 Years



## PHYSICS - AS AND A LEVEL

### Course Features:

- Text books dedicated to our AQA specifications are made available to students but it's useful for students to purchase their own copy.
- Students are encouraged to develop an enthusiasm and interest in physics by wider reading of books, magazines and internet sites and will have opportunities to give presentations on modern topics.
- Lessons are supported with demonstrations, video clips and individual practical work undertaken in a modern dedicated laboratory boasting a pleasant ambience.
- Examples and problems are often related to the real world in which we live.
- Homework is a regular feature of this programme.

### Entry Requirements:

Normally, students progressing from school will require a minimum of six GCSEs at grades A\* - C to enter the A level programme, one of which must be GCSE mathematics and grade A in the sciences is recommended. Entry for mature students without formal qualifications is at the discretion of the faculty.

**Campus:** Graig

**Course Length:** AS - 1 Year. Full A Level - 2 Years

## PSYCHOLOGY - AS AND A LEVELS

### Course Features:

- The course enables learners to develop an understanding of the human mind and human behaviour. Upon successful completion of this course learners will understand their actions and thoughts more clearly, and develop an increased understanding and tolerance towards others
- Learners will develop many essential skills through studying psychology. They will learn to think critically, and to express themselves clearly. These skills are essential preparation for university regardless of the university course being studied
- The course benefits from a highly qualified and dedicated team of psychology lecturers who work hard to ensure learners have an interesting and insightful learning experience. The team provide learners with a network of support and encouragement throughout their studies

### Entry Requirements:

Normally students 16 - 19 years of age will require a minimum of 6 GCSEs at grades A\* - C, one of which must be either GCSE English Language or GCSE Mathematics. GCSE Science is also advantageous.

**Campus:** Graig

**Course Length:** AS - 1 Year. Full A Level - 2 Years

## RELIGIOUS STUDIES - AS AND A LEVELS

### Course Features:

- Religious Studies has been thoroughly modernised to reflect the interests of young people. The course therefore focuses upon moral issues and dilemmas and upon a multicultural approach to World Religions. Christianity is studied as one religious tradition but given equal importance with all six major World Religions.
- The course is assessed entirely by essay writing. This means that students develop their writing skills fully during the course and finish well-prepared for the writing components of higher degrees.
- In RS open debate is encouraged fully. Students are expected to participate and to develop their skills in the oral presentation of their views. This is useful for all other areas of study.
- Students are introduced to at least one religious tradition which will be entirely new to them. Resources in the department for the study of World Religions are excellent.

### Entry Requirements:

Normally students 16 - 19 years of age will require a minimum of 6 GCSEs at grades A\* - C, one of which must be either GCSE Mathematics or GCSE English Language. Entry for mature students without formal qualifications is at the discretion of the Faculty.

**Campus:** Graig

**Course Length:** AS - 1 Year. Full A Level - 2 Years

## SOCIOLOGY - AS AND A LEVELS

### Course Features:

- Sociology is the study of society. The course focuses on why some groups of people in society have better life-chances than others.
- Sociology tries to understand how various social institutions operate and relate to one another, for example the influence of the family might have on how well children perform in the education system.
- Sociology is also concerned with describing and explaining the patterns of inequality, deprivation and conflict which are a feature of nearly all societies.
- Links with AS Government and Politics
- Discussions surrounding current affairs
- Elements of coursework

### Entry Requirements:

Normally students 16 - 19 years of age will require a minimum of 6 GCSEs at grades A\* - C, one of which must be either GCSE Mathematics or GCSE English Language. Entry for mature students without formal qualifications is at the discretion of the Faculty.

**Campus:** Graig

**Course Length:** AS - 1 Year. Full A Level - 2 Years

## SPANISH - AS AND A LEVELS (WJEC)

### Course Features:

- Excellent results
- Small groups allow individual attention
- A wide range of contemporary cultural and social topics are studied
- Candidates choice of oral topic possible at A Level
- Almost exclusive use of Spanish in class and in exams
- Candidates have independent control of listening material and exam and use of language laboratory and self study packs
- Excellent resources available in Learning Resource Centre and library, including language magazines, tapes, videos and language computer programmes
- The course is delivered by a native speaker
- Grammar is dealt with in a systematic and supportive way

### Entry Requirements:

Normally students 16 - 19 years of age will require a minimum of 6 GCSEs at grades A\* - C, one of which must be either GCSE Mathematics or GCSE English Language. Also, an A or B Grade in Spanish would be ideal. Entry for mature students without formal qualifications is at the discretion of the Faculty.

**Campus:** Graig

**Course Length:** AS - 1 Year. Full A Level - 2 Years

## TEXTILES - AS AND A LEVELS

### Course Features:

- Exploration of textile techniques and processes.
- Garment design
- Fabric decoration
- Fabric manipulation
- Dye workshops
- Pattern construction
- Pattern adaptation
- Garment construction

### Entry Requirements:

Normally students 16 - 19 years of age will require a minimum of 6 GCSEs at grades A\* - C, one of which must be either GCSE Mathematics or GCSE English Language. Those wishing to study Textiles should have a grade C or above in a related subject and/or a portfolio of work. Entry for mature students without formal qualifications is at the discretion of the Faculty.

**Campus:** Graig

**Course Length:** AS - 1 Year. Full A Level - 2 Years



## WELSH (SECOND LANGUAGE) - AS AND A LEVELS

### Course Features:

- There is a great emphasis on oral work, with students regularly working in groups and pairs to discuss contemporary issues.
- Use of language and grammar are key aspects of the course, helping students develop their fluency and accuracy in the Welsh language.
- Various forms of literature are studied and poetry, short stories and a plays and they form a basis for both oral discussion and written assignments.

### Entry Requirements:

Normally students 16 - 19 years of age will require a minimum of 6 GCSEs at grades A\* - C, one of which must be either GCSE Mathematics or GCSE English Language and a minimum of C grade in Welsh second language. Entry for mature students without formal qualifications is at the discretion of the faculty.

**Campus:** Graig

**Course Length:** AS - 1 Year. Full A Level - 2 Years

## WORLD DEVELOPMENT - AS AND A LEVEL

### Course Features:

- The teaching encourages students to develop the ability of critical analysis and independent thinking.

- The course will develop thorough academic research skills, the ability to reference correctly and synthesise ideas and arguments, all essential skills at university.
- The World Development lecturers have a background in world development. One lecturer has spent seven years working in the UK charity Oxfam at its headquarters and visiting projects in Central Africa and Eastern Europe. The other has worked in the energy industry.
- Fieldwork and university lectures will be an integral part of the course.
- Students have an opportunity to become involved in the college's Amnesty International group.

### Entry Requirements:

Normally students 16 - 19 years of age will require a minimum of 6 GCSEs at grades A\* - C, one of which must be either GCSE Mathematics or GCSE English Language. A good standard of communication skills is essential. A GCSE in Geography is desirable but an interest in the world and how it is changing is more critical.

**Campus:** Graig

**Course Length:** AS - 1 Year. Full A Level - 2 Years

# WELSH BACCALAUREATE

## THE WELSH BACCALAUREATE

Often referred to as the Welsh Bacc, this is a new and distinctive qualification for Wales. The Welsh Bacc itself consists of a 'core' of studies including work related education, personal and social education, 'Wales, Europe and the world' and Key Skills. It is designed to broaden a learner's experience and provide them with the skills that employers and universities demand. The Welsh Bacc can be completed at three levels: Advanced (Level 3), Intermediate (Level 2) or Foundation (Level 1). In all cases, learners study the Welsh Bacc alongside another subject (e.g. AS or A-levels, a National Diploma, or a First Diploma). For AS/A Levels please click on the separate link for Welsh Bacc Advanced (A Level). Diploma courses that can be studied with the Welsh Bacc are: Ammanford Campus: Building Craft Occupations; CACHE Foundation Award in Caring for Children; Award/Cert/Dip in Childcare and Education. Gelli Aur Campus: Technical Certificate in Rural Engineering. Graig Campus: First Diploma in Engineering; GNVQ Foundation; BTEC National Award/Cert/Diploma in Public Services; First Diploma and National Diploma in Health and Social Care; First Diploma in Sports Studies; First Diploma in Art and Design; National; NVQ in Business Administration; Diploma Level 2 in Hairdressing; A Levels; National Diploma in Business Studies; Introductory Diploma in Art; Introductory Diploma in Health and Social Care; National Certificate in IT. Pibwrlwyd Campus: Landbased studies with Animal Care; Admin and Business Skills Level 2. For further information on the Welsh Baccalaureate Qualification, please contact Rebecca Davies on 01554 748000 or rebecca.davies@colegsirgar.ac.uk

### Course Features:

- Learners study the full range of 6 Key Skills at different levels depending on the level of Welsh Bacc they are doing.
- Includes a strong element of personal tutorial.
- Gives a broad curriculum including a range of trips, visits and talks from external speakers.
- At Level 3, the Welsh Bacc carries 120 UCAS points which can be used towards university applications.

**Campus:** All Campuses

**Course Length:** At Levels 1 and 2, the Bacc is typically a one year course. At Level 3 it is typically a two year course.

## WELSH BACCALAUREATE QUALIFICATION WBQ AT ADVANCED LEVEL

This is an exciting new qualification designed to give students the opportunity to combine study at A level with core elements of the Welsh Bacc, where students develop their key skills and other skills which will serve them well in higher education and the world of work.

### Course Features:

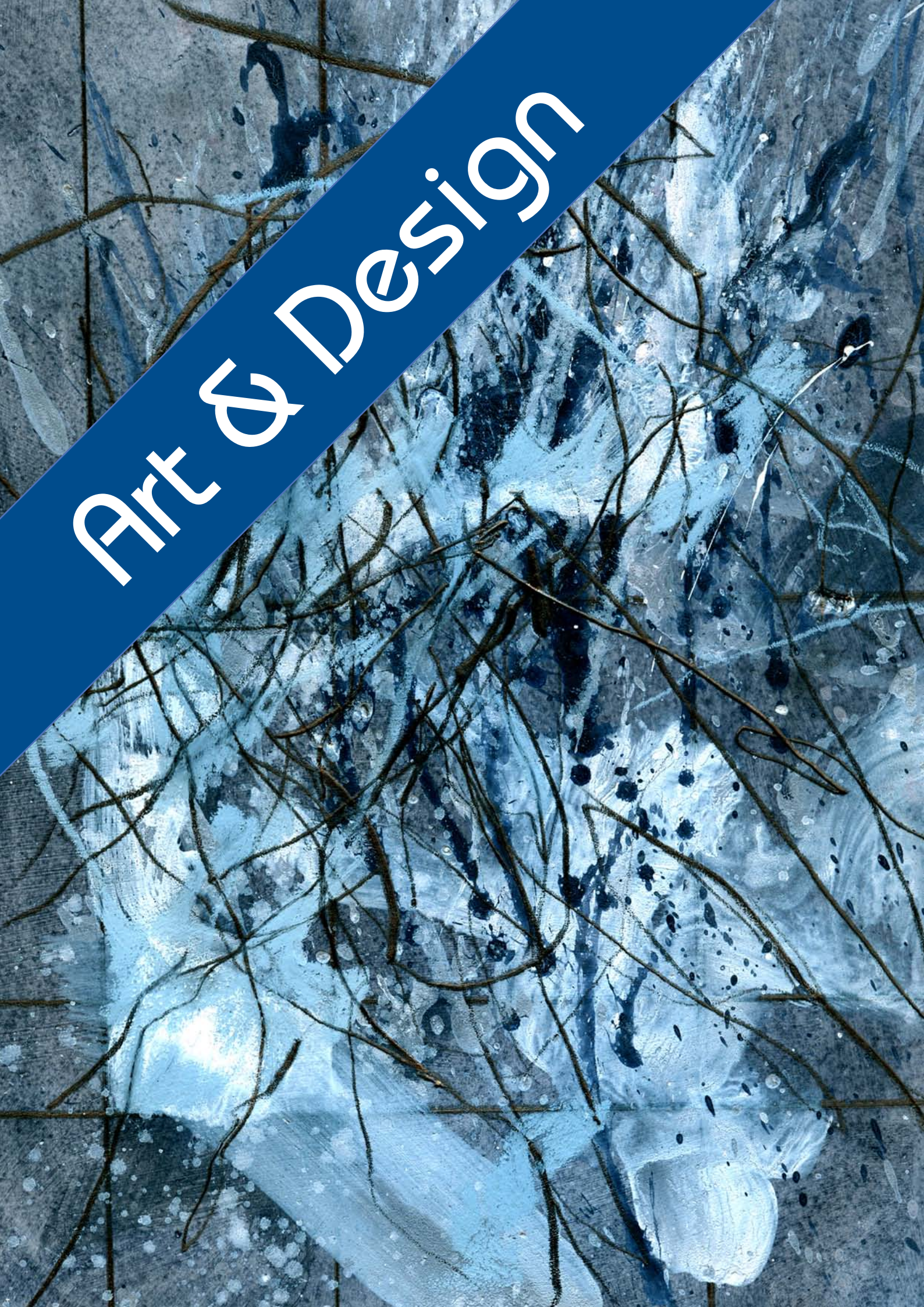
- Provides students with a wide range of experiences that will equip them for the modern world.
- Widens participation, and promotes access to post-16 education.
- Promotes active citizenship.
- The WBQ, enables candidates of all abilities to progress to further or higher education, training or employment.
- The WBQ, provides a broad and balanced range of curriculum experiences to all participating candidates.
- The WBQ, promotes learning by doing and the use of new technologies to make learning more effective.

### Entry Requirements:

Usually students are 16-19 years-old with at least 6 GCSEs grades A\*-C.

**Campus:** Graig

**Course Length:** Two years.



# Art & Design

## The heritage of this 'Art School' can be traced back to 1854 and we believe it is one of the first art colleges in Wales.

We are a friendly institution with a real 'Art School'. We are rural but well-connected within the world of art and design, visiting key galleries and creative industries.

We are focused on teaching and supporting our students, allowing them to make the most of their creativity and the opportunities available to them in college and their chosen careers.

Ours is a balanced approach of vocational teaching, relevant theory and live experience of participating in exciting national events, competitions and exhibitions. This approach prepares our students well for the world of work and employment.

### ARTWORK PUBLISHED

Rebecca Oates, a former first diploma student had two pieces of artwork published in *Moi Lolita*, a comic magazine published by deviantART - an online community for artists. Anime is a specific form of art which originated in Japan and its popularity is rising with increasing access to art and animation films in the UK. "I love anime and working with traditional media using complimentary computer software," said Rebecca. Julia Carter, lecturer in art and design at Coleg Sir Gâr said: "I was so thrilled for Rebecca when I saw her work. To have artwork published at such a young age is an immense achievement and the quality of her work speaks for itself. She enrolled on a vocational art course to learn a wider range of skills and is progressing further in her art education."

### Art & Design

- ◆ Access to Higher Education (Design and Fine Art)
- ◆ First Diploma Art and Design : (Incorporating WBQ)
- ◆ Art, Design and Technology - Advanced (Incorporating National Diploma)
- ◆ Art, Design and Technology - Advanced : Direct Entry Yr 2 (Incorporating National Certificate)
- ◆ BTEC Level 1 Diploma in Visual Arts
- ◆ Diploma in Foundation Studies Art and Design
- ◆ Extended Diploma in Fashion and Clothing

# ART & DESIGN

## ACCESS TO HIGHER EDUCATION (DESIGN AND FINE ART)

### Course Features:

- The course is taught by friendly and experienced staff
- Support, guidance and regular feedback are provided in personal tutorials to encourage and motivate students who may initially lack confidence in the classroom
- Students study key skills in communication and IT as well as units in their chosen area of specialisation
- Drawing and Painting; 2D Design; 3D Design
- Contextual Studies (History of Art)

### Entry Requirements:

No formal qualifications are required but entry is subject to interview.

**Campus:** Jobs Well & Pibwrlwyd

**Course Length:** 1 Year



## FIRST DIPLOMA ART AND DESIGN : (INCORPORATING WBQ)

### Course Features:

- First Diploma in Art and Design is equivalent to 4 GCSEs at grades A to C. This course also offers the Welsh Baccalaureate at Intermediate Level and is supported by the full range of Essential Skills
- Current attainment levels of top grades well above the National Comparator
- Opportunity to participate in an exhibition of own work, which is open to the public
- The opportunity to experience a wide range of art, design and digital skills

### Entry Requirements:

Recommended entry requirement is one of the following: Minimum of 2 GCSE's at grade D or above, Level 1 vocational qualification in Art and Design, Double Award Applied GCSE Art and Design or Media and a portfolio of work. Home schooled or mature students may gain entry through a personal portfolio of Art and Design work.

**Campus:** Graig

**Course Length:** 1 year



## ART, DESIGN AND TECHNOLOGY - ADVANCED (INCORPORATING NATIONAL DIPLOMA)

### Course Features:

- The combination of courses is equivalent to four traditional academic A levels. ie. The Extended National Diploma in Art Design is equivalent to 3 A levels, and the Specialist Diplomas are each equivalent to a further A level when taken in conjunction with Key Skills in Communication, Improving Own Learning and Performance, Problem Solving and Working with Others
- Opportunity to participate in an exhibition of own work, which is open to the public
- Current attainment levels of top grades well above the National Comparators
- All students who applied for a Degree/Higher National Diploma study were placed first or second choice for the last eleven years
- The opportunity to experience a wide range of traditional and contemporary art, design and digital skills including video, photography and modelmaking.

### Entry Requirements:

The recommended entry requirement is one of the following: A minimum of 4 GCSEs at grade C or above, including an art based GCSE ie. Art or Graphics or Resistant Materials or Textiles or Design Technology; First Diploma in Art and Design or First Diploma Design; Double Award Applied GCSE Art and Design at grade C or above, supported by one other GCSE at grade C or above; Home schooled or mature students may gain entry through the submission of a relevant portfolio of Art and Design work.

**Campus:** Graig

**Course Length:** 2 Years



## ART, DESIGN AND TECHNOLOGY - ADVANCED : DIRECT ENTRY YR 2 (INCORPORATING NATIONAL DIPLOMA)

### Course Features:

- The National Diploma in Art & Design is equivalent to 2 GCE A Levels. This qualification is supported by Key Skills in Working with Others and Improving Own Learning and Performance
- Current attainment levels of top grades well above the National Comparators
- All students who applied for a Degree/Higher National Diploma study were placed first or second choice
- Opportunity to participate in an exhibition of own work, which is open to the public
- The opportunity to experience a wide range of traditional and contemporary art, design and digital skills including video and photography
- The opportunity to participate in a study placement

**Entry Requirements:**

Recommended entry requirement is one of the following: Relevant 'AS' / 'A2' achievements, supported by an art & design portfolio; Transfer from another accredited vocational course at level 3 eg. Diploma Design etc, having successfully completed year 1; Home schooled or mature students may gain entry through the submission of a relevant portfolio of Art & Design work.

**Campus:** Graig  
**Course Length:** 1 year

**BTEC LEVEL 1 DIPLOMA IN VISUAL ARTS****Course Features:**

- Classroom assistance is offered to support students during all sessions and activities
- Students with additional needs have access to specialised and individual help
- Each element of the course is carefully timetabled to allow plenty of time to work on assignments. Students also have a personal tutorial once a week to discuss issues that may arise, and are also offered mentoring as part of the ongoing support provided
- The Engage team offers support in the form of advice and guidance; personal social development sessions; 1:1 mentoring; team building & other activities, and links to other support agencies

**Entry Requirements:**

There are no formal entry requirements but a reasonable standard of literacy is required to complete the course. The course is aimed at students who have achieved good results in their CoEA courses or who have achieved Grades E - G at GCSE.

**Campus:** Graig  
**Course Length:** 1 year



Diploma in Foundation Studies Art & Design

**DIPLOMA IN FOUNDATION STUDIES ART AND DESIGN****Course Features:**

- Students have access to excellent facilities often working in BA workshops.
- Students will be taught by a wide range of specialist lecturers many of which are involved in their own practice.
- The ratio of students to staff is excellent. Average studio group size is 16 with approximately 60 students in total. You can expect a minimum 18 taught sessions per week.
- You will have access to the faculty's Visiting Lecturer programme of practicing artist and designers.
- The course has developed a support programme for HE application which helps you choose the right course for you. This includes a data base of ex-graduates who can provide current information about their courses.
- The course has an excellent record of placements and pass rates.
- Progression includes our own excellent degree programmes and Universities such as Goldsmiths, Kingston, UWE, Saint Martins, UWIC and Swansea Metropolitan.
- The Foundation course is free, no tuition fees are charged. There is a studio fee currently £120 per student.
- Students can continue to claim EMA and are able to apply for an assembly learning grants both of which are means tested.

**Entry Requirements:**

Normally students are post A Level and will require a minimum of 5 GCSEs grade A\* - C and at least one A Level or equivalent qualification. Mature students will be considered on the basis of their creative work. All applicants will be interviewed through a visual portfolio of work.

**Campus:** Jobs Well  
**Course Length:** 1 year

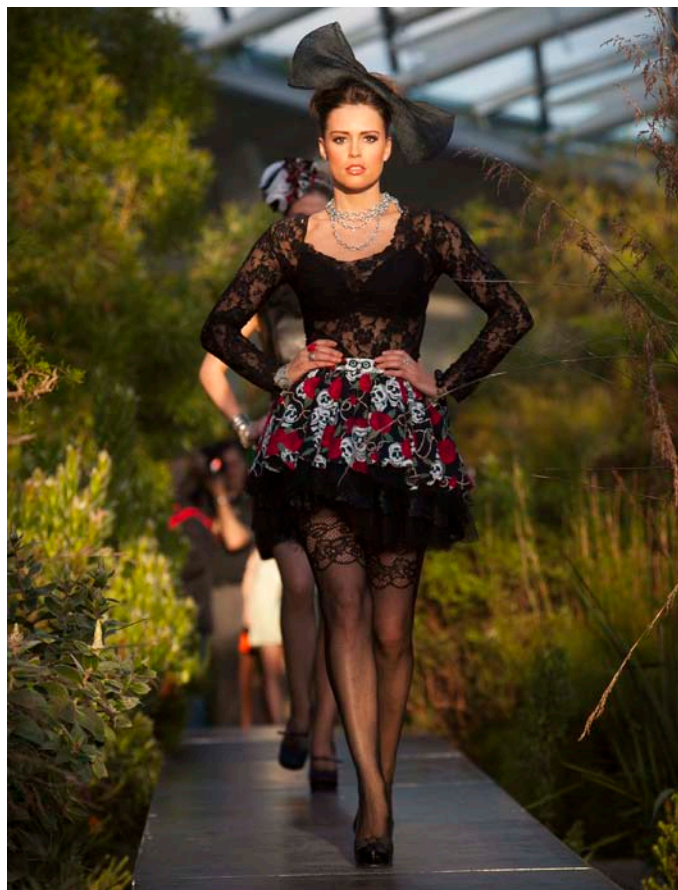
**EXTENDED DIPLOMA IN FASHION AND CLOTHING****Course Features:**

- Students have access to well equipped work studio with industrial machinery and spacious pattern cutting areas. Students all have designated individual work spaces.
- The department houses the Gerber Shared Technology Resource Centre. The commercial centre works with garment and textile companies providing valuable links. Students access the centre for workshops throughout the course giving them skills which are very much in demand within industry. The centre has recently acquired laser welding/joining equipment for the production of wearable technology. This resource is the only one of its kind at present, in Europe.
- Students participate in local and National competitions.
- Regular visits to exhibitions, galleries and trade fairs are integrated into the course along with international visits to places such as New York.
- Final year students exhibit their work at an end of year fashion show and exhibition.

**Entry Requirements:**

Normally students are 16-19 years of age and will require a minimum of 4 GCSEs at grades C or above, or equivalent vocational qualification. Entry for mature students without formal qualifications is at the discretion of the faculty. All applicants are assessed on an individual basis and will be offered the opportunity to attend an interview with a portfolio of their work. Advisory interviews are available prior to application.

**Campus:** Jobs Well  
**Course Length:** 2 Years



Built Environment & Skillbuild





Over recent years the built environment has had many successful learners winning regional and national awards in skills and team competitions and is recognised for its excellent collaborative partnerships with employers, local authorities, suppliers and manufacturers.

All construction related courses are based on the Ammanford Campus and include building craft and building services trades as well as interior design and construction technician and management courses.

The built environment also offers an extensive range of short courses tailored for industry needs. The courses cover all levels of construction from schools through to degree programmes and are heavily involved in community-based schemes. The built environment has received many accolades and awards for its learning outcomes and innovative programmes including the celebrated Shared Apprenticeship Scheme and Cadetship programmes.

#### **Skillbuild**

The Skillbuild programme is also run at the Ammanford Campus and is a work-based learning programme aimed at 16 – 18 year-olds who are not currently in work or training. Following an induction programme, learners will be placed with local employers to sample a work route of their choice.

### **STRONG SUCCESS RATE**

The built environment section boasts a strong annual success rate of student achievement. To name a few, Chris Randall won the SPARKS UK Apprentice Electrician of the Year 2011 award, a group of students won the heat of the Welsh heat of the Chartered Institute of Builders Student Challenge, Steffan James won third place in the SkillsELECTRIC Welsh heat and the college won a National Training Award for a collaborative apprenticeship scheme. Shane Evans won a national joint learner of the year award from CollegesWales and Gemma Prosser was named the nation's best trainee plumber in a skills competition. The facilities are excellent with purpose-built work bays for work areas such as carpentry, brickwork, painting and decorating and the learning experience is well-supported by industry and employers.

#### **Bricklaying**

- ◆ Basic Bricklaying Skills
- ◆ Bricklaying FCA
- ◆ Level 1 Diploma in Bricklaying
- ◆ Brickwork Diploma Level 2
- ◆ Brickwork NVQ / Diploma Level 2

#### **Construction Design & Management**

- ◆ National Award in 3D Design (Interior Design)
- ◆ BTEC National Diploma in 3D Design (Interior Design)
- ◆ BTEC Level 3 Subsidiary Diploma in Construction
- ◆ BTEC Level 3 Extended Diploma in Construction

#### **Electrical Installation**

- ◆ Electrical Installation Level 2

#### **Painting & Decorating**

- ◆ Painting and Decorating Diploma Level 1
- ◆ Painting and Decorating Diploma Level 2

#### **Plastering**

- ◆ ABC Entry Certificate in Plastering
- ◆ Basic Plastering
- ◆ Plastering Diploma Level 1

#### **Plumbing**

- ◆ Introduction to Plumbing
- ◆ Level 1 Certificate in Access to Building Services Engineering
- ◆ Level 2 Diploma in Access to Building Services Engineering

#### **Woodtrades**

- ◆ Level 1 Diploma in Carpentry and Joinery
- ◆ Diploma Level 2 in Site Carpentry

# BRICKLAYING

## BASIC BRICKLAYING SKILLS

### Course Features:

- The course covers basic theoretical knowledge, health and safety and a broad range of practical skills including use of hand tools, half brick walling, one brick walling, blockwork and foundations.
- Broad range of practical skills
- Knowledge of timber frame brick work
- Offers progression to a NVQ qualification

### Entry Requirements:

Basic communication and numeracy skills along with a keen interest in the craft.

**Campus:** Ammanford

**Course Length:** 1 Year



## BRICKLAYING FCA

### Course Features:

- An introduction into the elements of work which will need to be covered to achieve an Intermediate Construction Award or NVQ Level 2 in Bricklaying. The emphasis is on assisting in the areas of work rather than carrying out the work as an individual.
- Designed to prepare people for work in the construction industry
- Specifically designed for training in simulated conditions

### Entry Requirements:

A desire to work in construction.

**Campus:** Ammanford

**Course Length:** 1 Year

## LEVEL 1 DIPLOMA IN BRICKLAYING

### Course Features:

- The course covers basic theoretical knowledge, health and safety and a broad range of practical skills including use of hand tools, half brick walling, one brick walling, blockwork and foundations.
- Broad range of practical skills and underpinning knowledge
- Offers progression to an NVQ qualification

### Entry Requirements:

Basic communication and numeracy skills along with a keen interest in the craft.

**Campus:** Ammanford

**Course Length:** 1 Year

## BRICKWORK DIPLOMA LEVEL 2

### Course Features:

- The Level 2 Diploma in Bricklaying is designed to develop the skills and knowledge of people, enabling them to work in their industry in their chosen craft.
- It has been specifically developed for delivery in a training environment using simulated conditions, and the tests are based on the learner showing what they can do as an individual through the completion of all the requirements of the qualification.
- Suitable for people looking for a career in the construction industry
- Provides opportunities for progression to other training courses
- Mixing mortar materials
- Applying brickwork through various projects
- Decorative Brickwork

### Entry Requirements:

There are no formal entry requirements for this Diploma. However, learners must have the potential and opportunity to successfully gain the qualification.

**Campus:** Ammanford

**Course Length:** 1 Year

## BRICKWORK NVQ / DIPLOMA LEVEL 2

### Course Features:

- It has been specifically developed for delivery in a training environment using simulated conditions, and the tests are based on the learner showing what they can do as an individual through the completion of all the requirements of the qualification.
- Suitable for people looking for a career in the construction industry
- Provides opportunities for progression to other training courses
- Mixing mortar materials
- Applying brickwork through various projects
- Decorative Brickwork

### Entry Requirements:

Basic communication and numeracy skills along with a keen interest in the craft.

**Campus:** Ammanford

**Course Length:** 1 Year

# CONSTRUCTION DESIGN & MANAGEMENT

## NATIONAL AWARD IN 3D DESIGN (INTERIOR DESIGN)

### Course Features:

- This award offers an engaging programme for students wishing to learn about the interior design industry and provides a specialist work-related qualification in a broad range of sectors ranging from residential design through to designing commercial interior spaces.
- This programme details the basic elements of space planning through the knowledge of colour and pattern, proportion, furniture placement and building services.
- All staff are trained practitioners in their fields of specialism
- Designed for learners from all backgrounds whether they be school leavers, from industry or mature students seeking a new career path
- Can be used for progression to level four and a bilingual delivery option is available

### Entry Requirements:

You will generally need to have at least one of the following; 4 GCSE's at Grade A\* - C. Appropriate work experience (mature students). NVQ Level 2 in related subjects.

**Campus:** Ammanford

**Course Length:** 1 Year

## BTEC NATIONAL DIPLOMA IN 3D DESIGN (INTERIOR DESIGN)

### Course Features:

- The course covers the key aspects of interior design including design principles and methods, drawing development, visual communications, use of computers and specialist techniques.
- All staff are trained practitioners in their fields of their specialism.
- Designed for learners from all backgrounds whether they be school leavers, from industry or mature students seeking a new career path.
- The qualification can be used to progress to level four.

### Entry Requirements:

Normally students 16 - 19 years of age will require a minimum of four GCSEs at grades C or above or a First Diploma in a related subject or equivalent. Entry for mature students without formal qualifications is at the discretion of the Faculty.

**Campus:** Ammanford

**Course Length:** 2 Years



## BTEC LEVEL 3 EXTENDED DIPLOMA IN CONSTRUCTION

### Course Features:

- This course provides sound, practical and theoretical training in construction. It covers key aspects of construction including building technology, environmental services, building services, ICT and CAD.
- All staff are trained practitioners in their fields of specialism
- Designed for learners from all backgrounds whether they be school leavers, from industry or mature students seeking a new career path
- Can be used to progress qualifications to level four

### Entry Requirements:

Four GCSEs at grades A\* - C, appropriate work experience (mature students), or an NVQ Level 2 in a related subject. Entry for mature students without formal qualifications is at the discretion of the faculty.

**Campus:** Ammanford

**Course Length:** 1 Year

# ELECTRICAL INSTALLATION

## ELECTRICAL INSTALLATION LEVEL 2

### Course Features:

- This course offers first year training for the electrical installation apprentice. This is the first step in becoming a fully qualified electrician and through a series of practical and theoretical assessment, training will equip students with the skills necessary for the industry. NB - the second year of this course is day release.
- Essential training to become a fully qualified electrician
- A strong emphasis on practical training to prepare students for the industry
- Key underpinning knowledge giving a foundation of theory required in the industry.

### Entry Requirements:

No formal qualifications required, but 4 GCSEs including Maths and a science are desirable at Grade C or above, evidence of practical ability is useful and a selection test will be taken for entry.

**Campus:** Ammanford

**Course Length:** 2 years



# PAINTING & DECORATING

## PAINTING AND DECORATING DIPLOMA LEVEL 1

### Course Features:

- This qualification is designed to prepare people to enter the industry in their chosen craft.
- It has been specifically developed for delivery in a training environment using simulated conditions.
- The units within this course benefit from practical and theory content that both cover areas such as the selection of tools/materials, preparation of surfaces, application of decorative materials and the use of access equipment.

### Entry Requirements:

There are no formal entry requirements for the diploma.

**Campus:** Ammanford

**Course Length:** 1 Year

## BTEC LEVEL 3 SUBSIDIARY DIPLOMA IN CONSTRUCTION

### Course Features:

- This award offers an engaging programme for students wishing to learn about the construction industry and provides a specialist work-related qualifications in a range of sectors.
- A specialist work related qualification
- A sound preparation for employment and/or career development
- Provides career opportunities in the industry including architecture, quantity surveying and land surveying

### Entry Requirements:

You will normally need to have at least one of the following: Four GCSEs at grades A\* - C, appropriate work experience (mature students), or an NVQ Level 2 in a related subject. Entry for mature students without formal qualifications is at the discretion of the faculty.

**Campus:** Ammanford

**Course Length:** 1 Year





## PAINTING AND DECORATING DIPLOMA LEVEL 2

### Course Features:

- This qualification is designed to prepare people to enter the industry in their chosen craft.
- It has been specifically developed for delivery in a training environment using simulated conditions.
- All units at this level benefit from containing both practical/theory content covering such subjects as selection of tools and materials, preparation of surfaces, application of standard wall papers, the correct use of access equipment is also included within the course.
- In addition to these subjects the production of decorative effects and applying water-based materials using spraying equipment are part of the course

### Entry Requirements:

There are no formal entry requirements for the diploma level two painting and decorating, but the completion of diploma level one in painting and decorating is seen as an advantage.

**Campus:** Ammanford

**Course Length:** 1 Year

# PLASTERING

## ABC ENTRY CERTIFICATE IN PLASTERING

### Course Features:

- The course provides an introduction into plastering skills including the mixing of plastering materials, use of plastering tools and basic health and safety.
- Suitable for people looking for a career in the construction industry
- No previous experience required
- Provides a basis to move on to other training and qualifications

### Entry Requirements:

Basic communication and numeracy skills along with a keen interest in the plastering craft.

**Campus:** Ammanford

**Course Length:** 1 Year

## BASIC PLASTERING

### Course Features:

- This course covers the use of plastering tools, solid plastering ie. the mixing and applying of plastering materials, rendering, skimming, screeding and decorative plasterwork.
- It is designed to prepare learners to enter the construction industry.
- Suitable for people looking for a career in the construction industry
- Provides opportunities for progression to other training courses
- Mixing plastering materials
- Applying plastering materials
- Decorative plasterwork

### Entry Requirements:

There are no formal entry requirements for this qualification but individuals must have the potential to successfully gain the qualification. Numeracy and literacy skills at Level 1 would be an advantage and an interest in construction is essential. You will be asked to carry out a skills assessment to determine the support you require to be successful on your course.

**Campus:** Ammanford

**Course Length:** 1 Year

[www.colegsirgar.ac.uk](http://www.colegsirgar.ac.uk)

## PLASTERING DIPLOMA LEVEL 1

### Course Features:

- This course covers the use of plastering tools as well as the mixing and applying of plastering materials. It also covers basic health and safety.
- No previous experience required
- Suitable for people looking for a career in the construction industry
- Provides opportunities for progression to other training such as NVQs

### Entry Requirements:

Basic communication and numeracy skills along with a keen interest in the craft.

**Campus:** Ammanford

**Course Length:** 1 Year



# PLUMBING

## INTRODUCTION TO PLUMBING

### Course Features:

- This is an introductory course aiming to give students an insight into the plumbing industry and carry out non-complex plumbing fabrication tasks.
- The course aims to provide students with practical skills and knowledge to progress on to either the Agored Cymru Foundation in Plumbing or the 6129 City and Guilds Basic Certificate in Plumbing Studies level 2
- Safety in plumbing; Materials in plumbing
- Copper pipe jointing and bending in plumbing
- Pressure testing pipe work
- Access equipment

### Entry Requirements:

To attend a formal interview with the course tutor.

**Campus:** Ammanford

**Course Length:** 9 weeks, Full-time study.

## LEVEL 1 CERTIFICATE IN ACCESS TO BUILDING SERVICES ENGINEERING

### Course Features:

- This qualification is for people thinking about a career in buildings services engineering - perhaps maintaining air conditioners or working as an electrician or a plumber.
- These one year introductory qualifications cover four areas of building services engineering: plumbing, electrotechnical, heating and ventilating, refrigeration and air conditioning and also undertake one level 1 essential skill qualification.



**Entry Requirements:**

There are no formal entry requirements for candidates undertaking this qualification.

**Campus:** Ammanford

**Course Length:** 20 weeks

**LEVEL 2 DIPLOMA IN ACCESS TO BUILDING SERVICES ENGINEERING**

**Course Features:**

- This course is designed to directly follow on from Level 1 Certificate in Access to Building Services Engineering.
- This introductory qualification covers four areas of building services engineering; plumbing, electrotechnical, heating and ventilating and refrigeration and air conditioning.
- You will also undertake a Level 1 Essential Skills.
- This qualification is intended as a taster qualification for those who wish to enter any of the following industries: Plumbing; Refrigeration and air-conditioning; Electrical installation; Heating and ventilating

**Entry Requirements:**

Successful completion of the Level 1 Certificate in Access to Building Services Engineering.

**Campus:** Ammanford

**Course Length:** 15 weeks

**WOODTRADES**

**LEVEL 1 DIPLOMA IN CARPENTRY AND JOINERY**

**Course Features:**

- Upon successful completion of all units and external examination the Level 1 Diploma in Carpentry and Joinery will be awarded.
- You will learn how to use and maintain hand and power tools and produce basic woodworking joints and frames.
- Use of hand and power tools
- Maintenance of hand and power tools
- Produce basic woodworking joints and frames

**Entry Requirements:**

No formal qualifications are required but basic numeracy and communication skills to entry level 3 are desirable. Applicants should have an interest in a chosen craft and evidence of practical ability would be an advantage.

**Campus:** Ammanford

**Course Length:** 1 Year

**DIPLOMA LEVEL 2 IN SITE CARPENTRY**

**Course Features:**

- Upon successful completion of all units and external examination the Level 2 Diploma in Site Carpentry will be awarded.
- Setting out
- Use of power tools
- First and second fix site carpentry

**Entry Requirements:**

No formal qualifications are required but basic numeracy and communication skills to entry level 3 are desirable. Applicants should have an interest in the chosen craft and evidence of practical ability would be an advantage.

**Campus:** Ammanford

**Course Length:** 1 - 2 Years





Business & Education

The faculty offers a wide range of courses on the Graig, Pibwrlwyd and Ammanford campuses. These courses include the areas of accounting, business, management, enterprise, teaching, secretarial, administration, office technology, public services and education.

A wide range of provision is offered from beginners (level 1) to degree and post-graduate programmes (level 7). These include full time and part time further education (FE) courses, eg. first diplomas, national awards, certificates and diplomas, NVQs, AAT accounting qualifications, assessor and verifier awards, modern apprenticeships and employer-specific short and long courses.

A variety of attendance modes are offered. Depending on the course these include full time, part time, evening, block, short courses and on-line delivery. The range of part-time programmes is particularly strong. This enables the faculty to have strong links with local businesses and organisations and courses are regularly tailored to meet individual employer needs.

All students have access to a wide range of learning resources including modern ICT equipment, computers, libraries, on-line and other resources. Full and part time students are encouraged to access these facilities at any time.

### LOCAL MP GIVES A LESSON IN POLITICS

Llanelli MP Nia Griffith helped out business students at Coleg Sir Gâr's Graig with their Welsh Bacallaureate module in political studies.

The students learned about the difference between local and national government and were given an overview of the responsibilities and duties of a local assembly member and MP. Ms Griffith questioned students on their views about government and gave them a hypothetical scenario to help them develop their own ideas about leadership and political issues.

Dee Craig, lecturer in business said, "The talk was extremely useful for the students because part of the Welsh Bacallaureate is learning about politics. She talked about everything from lobbying MPs to her work on European committees including climate change and equality bills and she related many political concerns and problems to local issues such as flooding and regeneration."

#### Administration and Business Skills

- ◆ Administration and Business (Level 1)
- ◆ Administration and Business (Level 2)
- ◆ Administration and Business (Level 3)

#### Business & Management

- ◆ BTEC First Diploma / Certificate in Business
- ◆ BTEC Level 3 Certificate, Subsidiary Diploma, Diploma and Extended Diploma in Business

# ADMINISTRATION AND BUSINESS SKILLS

## ADMINISTRATION AND BUSINESS (LEVEL 1)

### Course Features:

- This course introduces skills and knowledge in a range of administration and business for those who work with a high degree of support and supervision.
- It will provide a basic introduction to the requirements of the work place in the context of an office environment.
- Focuses on the basic tasks involved in working in an office
- Provides opportunities for students to develop a range of skills and techniques, personal qualities and attitudes essential for working in an administrative and business environment
- Students achieve a range of nationally and internationally recognised qualifications

### Entry Requirements:

The course is aimed at people who are new to business and administration. There are no specific entry requirements. Entry is dependent on a selection interview and candidates are expected to show an interest in working in an office environment.

**Campus:** Graig & Pibwrlwyd

**Course Length:** 1 Year

## ADMINISTRATION AND BUSINESS (LEVEL 2)

### Course Features:

- This course provides training in a range of administration and business qualifications which include: NVQ Business and Administration Level 2, Text Processing Professional Suite (Level 1 and Level 2), Level 2 ITQ Certificate in IT User Skills, EDI Level 2 Diploma in Principles of Business and Administration and Edexcel BTEC Level 2 Certificate In Sustainability Skills.
- This course is practically based and contains components which meet the needs of employers in both the public and private sector.
- Some students will be enrolled on Welsh Baccalaureate at intermediate level and Essential Skills Wales as part of their programme.
- Provides opportunities for students to develop a range of skills and techniques, personal qualities and attitudes essential for working in an administrative and business environment
- Students will have the opportunity to experience working in a real office environment

- The option of being taught and assessed through the medium of Welsh is available
- Provides a progression route to more advanced qualifications
- Provides a foundation for a range of administrative roles
- Students achieve a range of nationally and internationally recognised qualifications
- Opportunity for some students to study the Welsh Baccalaureate at intermediate level

### Entry Requirements:

There are no specific entry requirements. Entry is dependent on a selection interview and candidates are expected to show an interest in working in an appropriate environment.

**Campus:** Graig & Pibwrlwyd

**Course Length:** 1 Year

## ADMINISTRATION AND BUSINESS (LEVEL 3)

### Course Features:

- This course aims to provide training in a range of further and higher level administration and business qualifications which include: EDI Level 3 Certificate in Principles of Business and Administration, Text Processing Business Professional Suite (Level 2 and Level 3) and ECDL.
- This course meets the needs of employers in both the public and private sector.
- It contains both practical and theoretical components which develop existing skills and encourages students to improve their qualifications whilst expanding their knowledge and expertise.
- Flexible course tailored to meet individual needs
- Provides opportunities for students to develop a range of higher skills and techniques, personal qualities and attitudes essential for working in an administrative and business environment
- Nationally recognised qualifications which provide a progression route to employment or higher level qualification
- The option of being taught and assessed through the medium of Welsh is available
- Delivered by a highly experienced course team
- Attendance may be negotiated to suit those with family or work commitments

### Entry Requirements:

Relevant experience and/or basic qualifications in the appropriate skills are necessary. The course is aimed at students progressing from a range of full and part-time administration and business studies courses who wish to attain higher level qualifications.

**Campus:** Graig & Pibwrlwyd

**Course Length:** 1 Year





# BUSINESS & MANAGEMENT

## BTEC FIRST DIPLOMA / CERTIFICATE IN BUSINESS

### Course Features:

- A BTEC First Diploma in Business is a practical, work-related course.
- It introduces learners to the business environment and particular areas of employment.
- It also provides a good basis to progress onto more advanced work-related qualifications such as BTEC Nationals.
- Provides an introduction for those interested in careers in business
- Learners also undertake the Welsh Baccalaureate level 2
- Provides a progression route to more advanced qualifications
- BTEC qualifications are recognised by employers and educational institutions
- Provides opportunities for learners to develop a range of skills and techniques, personal qualities and attitudes essential for successful performance in working life

### Entry Requirements:

Normally students 16 - 19 years of age will require a minimum of 4 GCSEs at grade D - G. Entry is dependent on a selection interview. Entry for mature students without formal qualifications is at the discretion of the Faculty.

**Campus:** Graig  
**Course Length:** One Year

## BTEC LEVEL 3 CERTIFICATE, SUBSIDIARY DIPLOMA, DIPLOMA AND EXTENDED DIPLOMA IN BUSINESS

### Course Features:

- This is a practical work related course which provides the learner with the opportunity to develop knowledge, understanding and skills in a range of subject areas related to the business environment including human resources, marketing, law and finance.
- Students learn by completing projects and assignments based on realistic workplace situations.
- Nationally recognised qualifications for business and for progression to higher education
- Learners also undertake the Welsh Baccalaureate Advanced Level and Essential Skills Wales at Advanced Level
- Assessed through coursework, assignments and a variety of activities such as the Global Enterprise Challenge
- Students focus on a particular subject area and develop a range of specialist skills and knowledge
- Provides an educational foundation for a range of careers in business or developing existing or new businesses

### Entry Requirements:

Normally students 16 - 19 years of age will require either a minimum 4 GCSEs at grade C or above, a First Diploma in Business, NVQ Level 2 in an appropriate subject or an equivalent qualification is also acceptable. Entry for mature students without formal qualifications is at the discretion of the Head of Business and Education.

**Campus:** Graig  
**Course Length:** Certificate - 3months  
Subsidiary Diploma - 1 Year  
Diploma and Extended Diploma - 2 Years



# Care, Childcare, Entry & Counselling



## These four sections offer varied programmes of study on the Graig campus, Ammanford campus and Pibwrlwyd campus. Full-time and part-time (day and evening) courses are provided.

Learners have the opportunity to study at all academic levels, from entry level (pre level 1) through to honours degree (level 6). Well qualified, experienced and highly supportive staff provide the best possible experiences for all our learners. Work related opportunities are a key component of all programmes of study. The sections work in very close partnership with the voluntary, independent and statutory sectors to ensure that the curriculum is fit for purpose and fully meets the ever changing needs of the care industry.

This was clearly demonstrated when we received the Care Accolade for the category "Leading on Learning". Higher education programmes in care, in counselling and in childhood studies are offered as well as the wide range of further education courses. The college was the first further education college in Wales to receive BACP (British Association of Counselling and Psychotherapy) accreditation for the three year certificate / professional diploma in counselling.

Every year, substantial numbers of students progress on to higher level courses or into relevant training and employment.

### DISABILITY ARTS CYMRU

Entry level students have had their artwork chosen for a Disability Arts Cymru exhibition in Cardiff in 2012.

Health, counselling, social and childcare award ceremonies are held every year to recognise the work that students put into their studies and to offer a farewell to those leaving college for university for degrees such as adult nursing, mental health, or employment such as learning support and domiciliary health care.

#### Care

- ◆ Foundation Certificate in Health and Social Care
- ◆ BTEC Level 2 First Diploma Health and Social Care
- ◆ BTEC Level 3 Subsidiary Diploma / Diploma in Health and Social Care
- ◆ BTEC Level 3 Extended Diploma in Health and Social Care

#### Childcare & Education

- ◆ Award/Certificate/Diploma in Caring for Children Level 1
- ◆ Award/Certificate/Diploma in Childcare and Education Level 2

- ◆ Award/Certificate/Diploma in Childcare and Education Level 3
- ◆ National Diploma / Certificate in Childrens Care Learning and Development

#### Entry

- ◆ Introduction to College Pre-Entry
- ◆ Edexcel Award in Skills for Work
- ◆ Edexcel Award/Certificate/Diploma in Personal Progress
- ◆ Edexcel Entry Level Skills for Independence and Work

## FOUNDATION CERTIFICATE IN HEALTH AND SOCIAL CARE

### Course Features:

- This course provides a basic knowledge and understanding of the health and social care sector.
- It is an ideal programme for learners with few formal qualifications who are interested in a career in health and social care.
- Students are required to attend college for 3 days each week.
- The Welsh Baccalaureate is studied as part of this programme.
- Learners develop their personal, basic and essential skills with appropriate support.
- Practical work related placements are part of the course.
- A supportive and stimulating student centred learning environment.
- A wide variety of learning experiences including practical skills, field trips and guest speakers.

### Entry Requirements:

There are no formal entry requirements but a reasonable standard of literacy is required to complete the course. An enhanced criminal records disclosure is required before students undertake work placements. Learners need the qualities required to work within a health and social care setting.

**Campus:** Graig  
**Course Length:** 1 Year



## BTEC LEVEL 2 FIRST DIPLOMA HEALTH AND SOCIAL CARE

### Course Features:

- Students will have the opportunity to carry out work experience in health and social care establishments.
- To proceed to a Level three health and social care course students will need to demonstrate high levels of achievement in both placement and coursework activities.
- Approximately 60 hours of work placement within a health and social care setting.
- Opportunity to achieve the Level 2 Welsh Baccalaureate qualification.
- Opportunity to gain First Aid and Food Hygiene qualification.
- An engaging programme for those learners who are clear about the areas of employment they wish to enter.

### Entry Requirements:

Normally learners of 16 - 19 years of age will require a minimum of 2 GCSEs at grade C or above, a distinction at foundation level or an equivalent qualification and an appreciation of the skills and qualities needed to work in a health and social care setting.

**Campus:** Graig  
**Course Length:** 1 Year

## BTEC LEVEL 3 SUBSIDIARY DIPLOMA / DIPLOMA IN HEALTH AND SOCIAL CARE

### Course Features:

- The Level 3 BTEC Subsidiary Diploma or Diploma in Health and Social Care are practical based qualifications which allow learners to study units related to the health and social care profession.
- The Subsidiary Diploma students have to achieve a minimum of 50 hours of work placement over this one year course.
- Diploma students have to achieve a minimum of 300 hours of work placement over a two year course. Diploma students will have the opportunity to study the Welsh Baccalaureate alongside their main qualification.
- First Aid qualification
- Nationally recognised qualifications that are delivered by vocationally experienced staff

[www.colegsirgar.ac.uk](http://www.colegsirgar.ac.uk)

### Entry Requirements:

Learners aged 16 - 19 years will usually require a minimum of 4 GCSEs at grades A\* - C or a Distinction grade from a First Diploma. An appreciation of the skills and qualities necessary to work in a health and social care setting is also required.

**Campus:** Graig  
**Course Length:** The Subsidiary Diploma is a one year course.  
The Diploma is a two year course.

## BTEC LEVEL 3 EXTENDED DIPLOMA IN HEALTH AND SOCIAL CARE

### Course Features:

- It is ideally suited for learners wishing to enter employment in health and social care or to progress on to higher education.
- Learners are required to undertake a minimum of 300 hours practical work experience.
- 18 units are studied in total, 8 of which are mandatory units covering a range of subjects enabling learners to pursue health and social care professions.
- Opportunities to gain a First Aid certificate
- A nationally recognised qualification delivered by experienced health and social care qualified staff.

### Entry Requirements:

6 GCSEs at grade C or above. An enhanced Criminal Records Bureau (CRB) check will be carried out on commencing the course.

**Campus:** Graig  
**Course Length:** 2 Years

# CHILDCARE & EDUCATION

## AWARD / CERTIFICATE / DIPLOMA IN CARING FOR CHILDREN LEVEL 1

### Course Features:

- The course provides a basic knowledge and understanding in caring for children.
- It is an ideal programme for those who have not yet achieved qualifications and would like to start a career in childcare.
- Students are required to attend college for 4 days each week when they will study the holistic aspects of childcare.
- Nationally recognised
- Supportive, stimulating student centered learning environment
- Welsh Baccalaureate / CLAIT Diploma studied
- Basic First Aid
- Food Hygiene
- 3 week practical placement training

### Entry Requirements:

Satisfactory interview and reference, enhanced CRB check.

**Campus:** Ammanford  
**Course Length:** 1 Year

## AWARD / CERTIFICATE / DIPLOMA IN CHILDCARE AND EDUCATION LEVEL 2

### Course Features:

- The Level 2 course provides knowledge and understanding in childcare and education to enable individuals to work in a supervised capacity in a variety of childcare settings.



- Students are required to attend college and practical placement training on alternate weeks throughout the year.
- The Welsh Baccalaureate is also studied as part of this programme.
- Nationally recognised one year course
- Supportive, stimulating student centred learning environment
- Practical placement training of 390 hours.
- Possible progression from the course to a Level 3 qualification.

**Entry Requirements:**

Applicants must have a minimum of 2 GCSEs at C grade or above or an appropriate Level 1 qualification at Distinction Level. Mature applicants without formal qualifications might be considered at the discretion of the Course Tutor. Satisfactory interview, reference and enhanced CRB check.

**Campus:** Ammanford

**Course Length:** 1 Year

## AWARD / CERTIFICATE / DIPLOMA IN CHILDCARE AND EDUCATION LEVEL 3

**Course Features:**

- The Level 3 course provides knowledge and understanding of childcare and education to enable individuals to gain an internationally recognised, vocationally specific qualification to enter employment or higher education.
- It is an ideal programme for those who have achieved 4 GCSEs at C grades or above or an appropriate Level 2 qualification.
- Students attend college and placement on alternate weeks throughout the two year programme.
- A total of 750 hours of practical placement training in a variety of settings will be experienced.
- Bilingual students can complete assignments/work experience in their preferred language.
- Students will be involved in stimulating student centred learning programmes.
- This qualification provides access into employment or a vocational progression route into higher education.
- Students will also receive Basic First Aid and Food Hygiene training.

**Entry Requirements:**

Four GCSEs at C grades or above or appropriate Level 2 qualification at A - A\* grade. Mature applicants without formal qualifications might be considered at the discretion of the Course Tutor. Satisfactory interview, reference and enhanced CRB check.

**Campus:** Ammanford

**Course Length:** 2 Years

## NATIONAL DIPLOMA / CERTIFICATE IN CHILDRENS CARE LEARNING AND DEVELOPMENT

**Course Features:**

- The Edexcel National Diploma/Certificate courses both provide knowledge and understanding of childcare and education to enable individuals to gain a nationally recognised, vocationally specific qualification to enter employment or Higher Education. A two year internationally recognised qualification where theory and practice are closely integrated.
- A total of 800 hours of practical placement training in four different settings will be experienced.
- Diploma students study 1080 guided learning hours, Certificate students study 720 guided learning hours.
- Both courses include Core and Option modules such as Promoting Children's Rights and Design Technology and Supporting Literacy/Numeracy
- Students will also study for Basic First Aid and Food Hygiene training.
- Bilingual students can complete assignments/work experience in their preferred language.
- Students will also study for the six Key Skills during the two year period.
- These qualifications provide access into employment or a vocational progression route into higher education.
- Students completing the National Diploma will also be offered the Welsh Baccalaureate at Level 3.

**Entry Requirements:**

National Diploma: 5 GCSEs at C grades or above. National Certificate: 4 GCSEs at C grades or above. Mature applicants without formal qualifications might be considered at the discretion of the Course Tutor. Satisfactory interview, reference and enhanced CRB check.

**Campus:** Ammanford

**Course Length:** 2 Years

# ENTRY LEVEL

## INTRODUCTION TO COLLEGE PRE-ENTRY

**Course Features:**

- This course is suitable for students with a range of additional needs and prepares them for progression on to other courses.

- The course is appropriate for pupils who have attended special schools or mainstream schools with a high level of support.
- Students may have the opportunity to participate in educational visits, foreign travel and leisure activities with the aim of developing their social skills and confidence.
- Students will be taught in small groups with classroom support

**Entry Requirements:**

No formal qualifications are required. Entry is subject to interview.

**Campus:** Ammanford & Graig

**Course Length:** 1 Year



## EDEXCEL AWARD IN SKILLS FOR WORK

**Course Features:**

- The course aims to develop personal, social and vocational skills and helps students to improve essential skills including numeracy, literacy and IT.
- Students sample a variety of job related skills.
- To ensure that the needs of each student are met, learning is planned to meet individual requirements.
- Students may participate in educational visits, foreign travel and leisure activities with the aim of developing their social skills and confidence.
- Classroom assistants support the students during all taught sessions and activities
- Students sample a variety of job related pathways
- The course aims to develop personal, social and vocational skills and helps students to improve essential skills including numeracy, literacy and IT.

**Entry Requirements:**

No formal qualifications are required. Entry is subject to interview.

**Campus:** Ammanford, Graig & Pibwrlwyd

**Course Length:** 1 Year

## EDEXCEL AWARD / CERTIFICATE / DIPLOMA IN PERSONAL PROGRESS

**Course Features:**

- The course aims to introduce students to the college environment whilst developing life skills.
- Students are encouraged to improve their essential skills including numeracy, literacy and IT.
- Students may participate in educational visits and leisure activities with the aim of developing their social skills and confidence.
- To ensure that the needs of each student are met, learning is planned to meet individual requirements.
- Classroom assistants support the students during all taught sessions and activities.

**Entry Requirements:**

No formal qualifications are required. Entry is subject to interview.

**Campus:** Ammanford & Graig

**Course Length:** 1 Year

## EDEXCEL ENTRY LEVEL SKILLS FOR INDEPENDENCE AND WORK

**Course Features:**

- This course provides opportunities for developing independent living skills and work skills in a range of vocational subject areas.
- Range of vocational taster opportunities
- Option to gain additional qualifications
- Classroom support and specialist careers guidance

**Entry Requirements:**

No formal qualifications are required.

**Campus:** Ammanford, Graig & Pibwrlwyd

**Course Length:** 1 Year



# Computing & Public Services

the  
ills

WINNER  
Wales Competition Wales  
IT & Design Level 3  
2010

## Welcome to Computing and Uniformed Public Services. Our college is in Carmarthenshire in West Wales and we have five campuses offering almost all courses you can think of from beginners through to postgraduate level.

In Public Services we offer National Diplomas at levels 1, 2 and 3 for those that have a keen interest in following a career in the Uniformed Public Services. The courses provide a thorough introduction into the Police, Fire, Ambulance and Rescue services as well as the Armed Forces. The course is delivered by a highly experienced team, supported by a programme of visiting speakers from the Public Services and voluntary sectors. Students take part in a wide range of out of classroom activities linked to Public Services.

Also new will be a one year Pathway to IT Apprenticeship course that prepares students for an apprenticeship by being college based with a lot of time spent working in IT departments. Apprentices will be employed and study in college one day a week.

Full time courses mainly for school leavers are National Diplomas at levels 1, 2 and 3 plus a Creative i-media course.

We have a range of part time courses such as ECDL, Clait, Digital Photography and Web Page Design.

We are also a Microsoft Academy offering MOS and MCDST as well as a Cisco Academy offering the CCNA for students studying advanced network and internetworking and A+ for people interested in computer hardware. All these courses are ideal for people who are or want to train to become IT technicians.

Even in the 'Credit Crunch' there are still many exciting jobs working as a computer professional - have you ever wondered what a day-in-the-life of a computer professional is like?

### WEB-WHIZZ DAVID SELECTED TO REPRESENT GREAT BRITAIN

National Diploma IT student David Bowed has been selected to represent Great Britain in the WorldSkills competition in London, 2011. This is the largest international skills competition which this year will see around 50 countries competing against each other. David is competing in the Web Design category where he will face a 20-hour challenge of building a website to a set specification representing Team UK. He is the only student in Wales taking part in the prestigious competition.

#### Computing

- ◆ BTEC Level 1 Diploma for IT Users
- ◆ BTEC Level 2 First Diploma in IT
- ◆ BTEC Level 3 Nationals in IT
- ◆ Creative i-Media

#### Public Services

- ◆ BTEC Level 1 Diploma in Uniformed Public Services
- ◆ BTEC Level 2 First in Uniformed Public Services
- ◆ BTEC Level 3 Nationals in Public Services

# COMPUTING

---

## BTEC LEVEL 1 DIPLOMA FOR IT USERS

### Course Features:

- This course provides good progression on to level 2 courses.
- It is aimed at those with less than 2Ds at GCSE.
- Opportunities to study a range of modules in IT and Business
- Opportunity to improve key skills in Communication, Numeracy, IT and the wider key skills
- An opportunity to gain the new Welsh Baccalaureate qualification
- Students will also have an opportunity to follow a personal development programme aimed at improving confidence, communication skills and self management. This will give better opportunities for further study and employment

### Entry Requirements:

There are no formal entry requirements but a reasonable standard of literacy is required to complete the course. The course is aimed at students who have achieved good results in their CoEA courses or who have achieved Grades E - G at GCSE.

**Campus:** Graig  
**Course Length:** 1 Year

---

## BTEC LEVEL 2 FIRST DIPLOMA IN IT

### Course Features:

- A BTEC Level 2 First Diploma in IT is a practical, vocational course.
- You learn by completing projects and assignments that are based on realistic workplace situations.
- The course is made up of a number of units which equate to 60 credits.
- Everyone has to study core and specialist units. The specialist units enable you to study a particular area in more depth.
- BTEC Level 2 First in IT is equivalent to 4 GCSEs at grades A\* - C.
- Provides a good progression route to more advanced qualifications eg. BTEC Level 3 Nationals.
- Motivates learners via applied learning and assessment.
- Assessed internally through coursework.
- Provides education and training for employees working in ICT related occupations.

### Entry Requirements:

You will normally need to have at least one of the following: A standard of literacy and numeracy supported by a general education equivalent to 2 GCSEs; Related work experience; Other related level 1 or 2 qualifications; Entry for mature students without formal qualifications is at the discretion of the faculty.

**Campus:** Graig  
**Course Length:** 1 Year

---

## BTEC LEVEL 3 NATIONALS IN IT

### Course Features:

- The BTEC Level 3 Nationals in IT provides a broad base of Computing knowledge and applications for learners.
- It is an 18-Unit qualification with six core units and 12 specialist units.
- It is suitable for 16-19 year-olds wishing to work in the IT field or progress to higher education in this area.
- Provides education and training for IT practitioners employed in systems support, analysis and design, software testing, network administration etc.
- Recognised progression route to Higher Education - HND or Degree in Computing
- Sound underpinning knowledge of computer theory with practical application
- All Units are assessed through coursework

### Entry Requirements:

You will normally need to have at least one of the following: A BTEC First Diploma in ICT or at least 4 GCSEs at Grades A\* - C ideally including Maths.

**Campus:** Graig  
**Course Length:** 2 Years

---

## CREATIVE I-MEDIA

### Course Features:

- Creative iMedia is a qualification which covers aspects of knowledge, skills, understanding and creative flair necessary for employment within the creative computing section.
- The Creative iMedia course offers a qualification which can extend a learner's programme of study and provide vocational emphasis within their programme of study.
- The opportunity to experience a wide range of design and digital skills including video and games
- An industry recognised qualification within the media industry
- If you are passionate about creative media, Creative iMedia is for you
- Increase your knowledge quickly through bite-sized individual units

### Entry Requirements:

2 GCSEs at grade C/D or above.

**Campus:** Graig  
**Course Length:** 1 Year

[www.colegsirgar.ac.uk](http://www.colegsirgar.ac.uk)





# PUBLIC SERVICES

## BTEC LEVEL 1 DIPLOMA IN UNIFORMED PUBLIC SERVICES

### Course Features:

- This course provides good progression on to level 2 courses.
- It is aimed at those with less than 2Ds at GCSE.
- The course will also involve the study of key skills.
- Some of the units include: Conduct at Work; Wellbeing and fitness for public service; Public service career; Practical teamwork in the public service; Planning and participating in an event; Developing personal skills for leadership; Searching for a job.
- Opportunities to study a range of modules.
- Opportunity to improve key skills in Communication, Numeracy, IT and the wider key skills.
- An opportunity to gain the new Welsh Baccalaureate qualification.
- Students will also have an opportunity to follow a personal development programme aimed at improving confidence, communication skills and self management. This will give better opportunities for further study and employment.

### Entry Requirements:

There are no formal entry requirements but a reasonable standard of literacy is required to complete the course. The course is aimed at students who have achieved good results in their CoEA courses or who have achieved Grades E - G at GCSE.

**Campus:** Graig  
**Course Length:** 1 Year

## BTEC LEVEL 2 FIRST IN UNIFORMED PUBLIC SERVICES

### Course Features:

- This course is designed to provide specialist work-related qualifications for a range of uniformed public sector organisations.
- It is assessed through assignments, projects and case studies and consists of 3 core units and 3 specialist subjects covering a variety of subjects relevant to working in the uniformed public services.
- Provides a thorough introduction for those interested in entering the Police, Fire, Ambulance and Rescue Services, or the Armed Forces
- Provides an educational foundation for a range of careers
- Learners undertake the Welsh Baccalaureate Level 2
- Delivered by a highly experienced course team
- Provides opportunities for learners to develop a range of skills and techniques, personal qualities and attitudes essential for successful performance in working life
- Learners are provided with opportunities to visit a range of Public Services including the Police, Fire and Rescue Service and the Coastguard
- There is a full programme of visiting speakers from the Public Services and Voluntary Sectors
- Provides the learner with the opportunity to broaden their study in public service related areas

### Entry Requirements:

Normally students 16 - 19 years of age will require a minimum of 4 GCSEs at grade D to G, or equivalent qualifications. Entry is dependent on a selection interview. Entry for mature students without formal qualifications is at the discretion of the Faculty.

**Campus:** Graig  
**Course Length:** 1 Year

## BTEC LEVEL 3 NATIONALS IN PUBLIC SERVICES

### Course Features:

- BTEC Level 3 Nationals in Public Services are designed to provide the learner with the opportunity to develop their knowledge, understanding and skills in a variety of subject areas related to the uniformed public services, providing the learner with a realistic view of public services as a rewarding working environment
- Encourages teamwork, co-operation and problem solving skills, which are essential requirements for employment within the public services environment
- Nationally recognised qualification which provides a progression to higher education or employment
- Delivered by a highly experienced course team
- Provide a progression route to higher education
- Qualification recognised by leading employers
- Delivered at a local college
- Access to first class individual study support
- Knowledge, understanding and skills are developed via a range of theoretical and practical internal and external activities.

### Entry Requirements:

Minimum of four GCSEs at Grade C or above or First Diploma or an appropriate NVQ at Level 2 are also acceptable. There are no formal entry requirements if you are aged 19 or over, but entry is subject to an interview.

**Campus:** Graig  
**Course Length:** 2 Years





# Creative Industries, Sport, Leisure & Tourism

## Welcome to the curriculum area of Creative Industries, Sport, Leisure and Tourism; one of the most dynamic areas at Coleg Sir Gar.

This is the home of the Performing Arts, Music, Broadcast Media, Sport, Travel and Tourism and Outdoor Education departments as well as our nationally acclaimed Sports Academy. We offer exciting vocational courses in the above areas from Level one through to Degree level (presently only offered in sport). All have excellent attainment rates and strong links with both universities and industry which ensures that all our students have the best guidance and opportunities to achieve their desired goals.

All our highly qualified staff maintain effective connections with industry to make sure that their teaching is both relevant and current. Our area benefits from excellent facilities including a professional TV studio, a state of the art Roland Academy, fully equipped dance and drama studios, an all weather pitch, multi gym, sports halls and sport analysis laboratory. All the students in our area benefit from a programme of master classes, guest speakers, numerous trips including foreign visits, performances, relevant work related activities, sports tournaments and additional courses. These courses include the Welsh Baccalaureate, NVQs in Sport Coaching and Rockschoool Music qualifications. These activities, together with dynamic teaching sessions enable our students not only to learn about their subjects but develop skills essential for employment and university.

As you look through this section you will be able to see more detail on all of our courses and what the Sports Academy has to offer. The courses in our area are all vocational which means that you would be spending the majority of your week in sessions exploring and learning about your chosen area. All the courses are continually assessed so that means there are no exams but that you will need to complete both practical and theoretical activities throughout your course that will lead to your final grades. The grades at Level three are equivalent to A levels and are accepted by universities. Many of these area are also offered as AS/A levels within the college and can be found in the A level section of the website.

We hope that you will find a course that suits your needs within our area and can assure you that your experience at Coleg Sir Gâr will be exciting and fulfilling and will help guide you onto the next stage of your development.

### STADIUM TOURS

Travel and tourism students have linked up with the Scarlets to offer public tours of the stadium. Students will be required to conduct themselves in accordance with the stadium tour's policy and undertake health and safety requirements. "It's great that we've linked up with the Scarlets to offer our students the experience that's so essential to them on a vocational course," said course tutor Gareth Harvey. "Vocational courses focus on industry experience and real-life challenges in order to prepare the students for employment or university and I'm sure this will be a very positive challenge for all of them."

#### Broadcast Media

- ♦ Creative Media Production

#### Music Technology

- ♦ Creative Music Producer Level 2
- ♦ Extended Diploma in Music Technology and Certificate in Music (Level 3)

#### Outdoor Education

- ♦ NVQ Sport Recreation and Allied Occupations Activity Leadership Outdoor Education Level 2
- ♦ NVQ Outdoor Education, Development Training or Recreation Level 3

#### Performing Arts

- ♦ Diploma in Performing Arts at Level 2 (Acting)

- ♦ Level 3 Extended Diploma in Performing Arts (Dance)
- ♦ Extended Diploma in Performing Arts at Level 3 (Performance)
- ♦ BTEC Level 3 Extended Diploma in Production Arts

#### Sport Science and Sport Development and Coaching

- ♦ BTEC Level 2 Diploma in Sport
- ♦ BTEC Level 3 Extended Diploma in Sport (Development, Coaching & Fitness)
- ♦ BTEC Level 3 Extended Diploma in Sport and Exercise Sciences

#### Travel and Tourism

- ♦ BTEC Extended Diploma in Travel and Tourism

# BROADCAST MEDIA

## CREATIVE MEDIA PRODUCTION

### Course Features:

- This practical course thoroughly explores media production from script to screen.
- Students create a wide range of individual and group-based projects covering video, post-production and editing, sound and animation.
- Students completing the course can progress to higher education and/or access employment opportunities.
- The aim of the course is to develop the creative, technical and intellectual skills to ensure that students can progress into higher education or employment within the media industry.
- Central to this course are national occupational standards - the skills and knowledge defined by employers within the media industry itself. Students are therefore involved in often intensive production work in studio and location settings, developing their individual creative ideas for their project work, as well as working with external partners and on live projects.
- Students also learn the importance of careful research, development and preparation for their production work - following industry-based guidelines and processes.
- Students also learn a variety of industry standard software packages such as Final Cut Pro, DVD Studio Pro, Logic, After Effects, Photoshop and Toon Boom Studio.
- Students also have access to a well equipped 1,000 square foot media studio as well as a range of digital video cameras and DSLR's.
- Students also have the opportunity to develop their work along creative pathways in video, audio and animation.

### Entry Requirements:

4 GCSEs at C grade or above as well as a portfolio interview with applicants. Mature students without formal qualifications are warmly invited to apply. Acceptance onto the course is at the discretion of the faculty.

**Campus:** Graig  
**Course Length:** 2 Years



# MUSIC TECHNOLOGY

## CREATIVE MUSIC PRODUCER LEVEL 2

### Course Features:

- This course is an ideal way to gain the broad range of skills needed to operate as a music producer in the music industry.
- The course is designed for musicians who want to write, record and remix music using computer-based software and hardware.
- The course generates many transferable skills, which can be used in all walks of life.
- Nationally accredited and recognised qualification.
- An opportunity to extend knowledge and experience of music industry
- An opportunity to participate in live projects.
- Creating a professional portfolio for progression.
- An opportunity to work in the college's Roland Academy and professional music recording studios.
- An opportunity to work with staff with strong links to the music industry.

### Entry Requirements:

A proven interest in music.

**Campus:** Graig  
**Course Length:** 2 Years

[www.colegsirgar.ac.uk](http://www.colegsirgar.ac.uk)



## EXTENDED DIPLOMA IN MUSIC TECHNOLOGY AND CERTIFICATE IN MUSIC (LEVEL 3)

### Course Features:

- The central programme of study within the music technology and music department is designed to enable students to develop multi-skills that are relevant for further study at higher education and/or employment in the contemporary creative industries.
- An Edexcel level 3 Extended Diploma in Music Technology teaches music production techniques in the first year leading to the planning and delivery of a music product in the second year.
- Students are taught on industry standard equipment by lecturers who are current professionals within their subject areas.
- There are three studios, one network of 16 PCs and two networks of Apple Macs each with 17 Workstations.
- There are opportunities to perform in a variety of venues which have included the Glanfa Stage at the Millennium Centre, Cardiff and the National Botanic Garden of Wales.
- We also have a TV studio to record live performances.
- Students will be encouraged to work to professional standards and if worthy their work will be promoted commercially.
- Many links with universities and industry have been developed via the department's Industry Consultative Panel and partnership with Roland UK.
- The transition to university or the industry therefore is very smooth.
- As a Roland Academy the college has several visits and workshops each year from the very top international music technology demonstrators.
- Furthermore our links with the major Beach Break Live Festival at Pembrey gives the opportunity for work experience – supervised during college hours - at an event which attracts 20,000 people.

### Entry Requirements:

Students 16 years of age and over should normally have achieved at least four grades of C or above at GCSE level. Music GCSE is preferred and will be viewed favourably but need not be one of the subjects passed. However, a proven track record of performance ability and experience of music making of any style is expected. Mature applicants may be considered without formal qualifications at the discretion of the faculty.

**Campus:** Graig  
**Course Length:** 2 Years

# OUTDOOR EDUCATION

## NVQ SPORT RECREATION AND ALLIED OCCUPATIONS ACTIVITY LEADERSHIP OUTDOOR EDUCATION LEVEL 2

### Course Features:

- This course is designed to develop an interest in Outdoor Education and provide opportunities to gain personal experience in various aspects of outdoor activities.
- It is nationally recognised by employers, further and higher education establishments and professional bodies.
- Provides a broad based introduction to the requirements of the outdoor adventurous activity environment.
- Students will develop skills, knowledge and understanding relevant to this employment sector
- Students have the opportunity to work with local schools.
- All students are encouraged to gain a relevant work placement.

**Entry Requirements:**

GCSEs or equivalent would be beneficial but not essential. More important is the ability to show commitment, motivation and a willingness to work hard on the course. Mature students without formal qualifications are welcomed on the course. Acceptance onto the course is at the discretion of the faculty.

**Campus:** Graig

**Course Length:** 1 Year

## NVQ OUTDOOR EDUCATION, DEVELOPMENT TRAINING OR RECREATION LEVEL 3

**Course Features:**

- This course aims to provide skills acquisition, knowledge and experience for students to gain employment in the outdoor education industry.
- It is designed to be mentally and physically stimulating while providing opportunities to cope with new challenges and learn leadership skills.
- This National Vocational Qualification is equivalent to an A2 level and has been developed to meet the needs of the outdoor activity industry.
- The course focuses on personal skill acquisition, group safety and programme management.
- A range of activities are covered and the gaining of national governing body awards is encouraged.
- Much of the practical learning is off site while the more theoretical units are delivered at the Graig campus.
- Proved competency levels afford the opportunities to gain employment in the outdoor education industry.
- Pathways to national governing body training schemes and higher education would also be accessible.

**Entry Requirements:**

GCSEs or equivalent would be beneficial but not essential. More important is the ability to show commitment, motivation and a willingness to work hard on the course. Mature students without formal qualifications are welcomed on the course. Acceptance onto the course is at the discretion of the faculty.

**Campus:** Graig

**Course Length:** 2 Years



## PERFORMING ARTS

### DIPLOMA IN PERFORMING ARTS LEVEL 2 (ACTING)

**Course Features:**

- This course, which is equivalent to four or five GCSEs at grade C or above, will enable students to gain experience and knowledge in the performing arts area.
- Students will be involved in a variety of performance projects working on their acting, singing and dance skills.
- Performances are staged at the college and in external professional and site-specific venues, 100% Completion rates.
- The course has strong links with professional performers and companies including BBC Wales 'Its My Shout' training scheme, National Botanic Garden Of Wales, National Youth Theatre Wales and the Welsh National Youth Opera.
- The course has received national recognition with performances across Europe and in London.
- Progression to level 3 and higher education is very high.

**Entry Requirements:**

BTEC Level 1 Certificate OR a standard of literacy and numeracy supported by a general education equivalent to four GCSEs at grades D-G OR related work experience OR other related level 1 or 2 qualifications. All applicants will need to audition and be interviewed.

**Campus:** Graig

**Course Length:** 1 Year

### LEVEL 3 EXTENDED DIPLOMA IN PERFORMING ARTS (DANCE)

**Course Features:**

- The Level 3 Extended Diploma in Dance will give you the opportunity to develop your imaginative, physical and intellectual capacities.
- It is an enjoyable form of exercise as well as being an output for creativity and positive energy.
- The Level 3 Extended Diploma in Dance will allow you to gain a three A-level equivalent qualification in a subject that you feel passionate about.
- You will have the opportunity to explore professional dance works, appreciate dance in an informed manner and create your own choreography with a view to perform.
- The course is delivered by a highly skilled and enthusiastic team within a relaxed yet challenging learning environment.
- Students will have the opportunity to explore a range of dance styles which include, contemporary, ballet, jazz, musical theatre and street.
- The students will participate in a visiting tutor programme where professionals from the industry work with all year groups.
- Students will have the opportunity to perform in external venues such as Ammanford Miners Theatre, Theatre Elli, D10 Dance Festival and The Royal Welsh show.
- Students get the opportunity to audition for an elite dance company who are asked to perform at a range of events.

**Entry Requirements:**

Entry requirements are 4 GCSE's grades A\* to C or educational equivalent.

**Campus:** Graig

**Course Length:** 2 Years



## EXTENDED DIPLOMA IN PERFORMING ARTS AT LEVEL 3 (PERFORMANCE)

### Course Features:

- The course includes both the theoretical and practical aspects of performance.
- Students will be able to study a range of disciplines from acting, dance and singing.
- Students will study units such as: Theatre in Education, TV and Radio, Movement in Performance, Devising, Physical Theatre, and a range of scripted performances.
- Students will be involved in a variety of performance projects.
- Performances are staged at the college and in external professional venues. The programme regularly performs Site Specific work with recent projects taking place at the National Botanic Garden of Wales and Newton House, Llandeilo.
- The course has a strong link with professional performers and companies including BBC It's My Shout. The course has a strong visiting programme which offers the students a variety of workshops with industry professionals.
- The course is delivered by a team of highly skilled and passionate staff which can offer a unique learning experience.
- Students are encouraged to take on extra - curricular performance work.
- Students are able to study Subsidiary Diplomas in Technical Theatre and Dance to compliment their main programme of study.

### Entry Requirements:

Entry requirements are 4 GCSE's grades A\* to C or educational equivalent.

**Campus:** Graig  
**Course Length:** 2 Years

## BTEC LEVEL 3 EXTENDED DIPLOMA IN PRODUCTION ARTS

### Course Features:

- Students will follow a course that looks at lighting, sound, stage management and design.
- This is a practical course, providing a range of opportunities for students to put taught skills into practice.
- Production work is carried out both in-house and at professional venues (when applicable).
- The course is equivalent to 3 A levels
- Working in local venues such as Theatr Elli, the Lyric and other locations such as Newton House and the National Botanical Garden of Wales
- Develops skills in stage lighting, sound, design and stage management
- The course has a strong link with professional performers and companies including ELAN Wales.

### Entry Requirements:

4 GCSEs, C or above. Previous experience desirable.

**Campus:** Graig  
**Course Length:** 2 Years

# SPORT SCIENCE AND SPORT DEVELOPMENT AND COACHING

## BTEC LEVEL 2 DIPLOMA IN SPORT

### Course Features:

- The BTEC level 2 Diploma in Sport is a vocational qualification equivalent to 4 GCSEs.
- It is made up of a variety of modules which equips the learner with the knowledge, understanding, practical skills and expertise required for future employment in the sport and leisure industry or, with the appropriate grades and a successful interview, progression onto the Level 3 Extended Diploma in Sports Development and Fitness.
- Learners will have the opportunity to gain a variety of qualifications which will develop skills, relevant to employment in this sector.
- The close links that the course has with local employers ensure that students gain a realistic view of the demands and trends of the industry.
- A variety of teaching methods are used which will suit the individual needs of the learner
- Excellent support and facilities are available for learners to enhance their learning and understanding

### Entry Requirements:

Learners aged 16 - 19 years old will require a minimum of 2 GCSEs at grade C or above or an equivalent qualification. Entry for mature learners without formal qualifications is at the discretion of the faculty

**Campus:** Graig  
**Course Length:** 1 Year

## BTEC LEVEL 3 EXTENDED DIPLOMA IN SPORT (DEVELOPMENT, COACHING & FITNESS)

### Course Features:

- This qualification will enable students to develop the essential skills and knowledge for starting a career in the sports sector, with a specific focus on sports development, coaching and fitness.
- The qualification will give students insight into the various different occupational routes they can take within the sector, plus help them to progress in existing employment, or move on to further study.
- The course offers the opportunity to acquire an NVQ in activity leadership plus governing body coaching qualifications.
- The course involves working with local Sport Development Officers gaining practical coaching experience in local primary schools.
- The course design facilitates full participation in the prestigious Sports Academies.

**Entry Requirements:**

Students 16-19 should normally have at least one of the following: A BTEC First Diploma at Merit grade or above; at least four GCSEs at grades A\* - C, to include Physical Education and either English or Maths; appropriate work experience; the interest and potential to succeed in achieving the qualification. Mature students may be considered without formal Qualifications at the discretion of the faculty.

**Campus:** Graig  
**Course Length:** 2 Years

## BTEC LEVEL 3 EXTENDED DIPLOMA IN SPORT AND EXERCISE SCIENCES

**Course Features:**

- Sport and exercise scientists continue to be a growing presence in the world of sport, and as we look to the future, all the signs suggest that their influence in sport will increase.
- From the elite performers' reliance on a large support team, to the casual gym user's use of ergogenic aids, sport and exercise sciences, core elements of anatomy, physiology, psychology and biomechanics are seen in almost every aspect of, and activity within, the sport and active leisure sector.
- The 18 unit level three course is suitable for students who wish to learn more about the human body, the effects of conditioning and the application of science to sport performance.
- Nationally recognised qualification throughout the UK, allowing sufficient entry points for access into university.
- Opportunity to become a member of the college Sports Academy and enjoy professional guidance and support to improve your own sporting performance.
- Additionalities on the course include involvement within the level 3 Welsh Baccalaureate and Key Skills programme and the opportunity to complete a number of recognised industry qualifications including Health and Safety Executive (HSE) First Aid qualification, Community/Higher Sports Leaders Award and level one coaching in a variety of sports.
- Additionality comes in the form of Sports Leader: Community Sports Leadership Award (CSLA) and Higher Sports Leader Award (HSLA)
- Opportunity to use industry recognised sport science equipment within our Performance Analysis Centre (PAC) and Match Analysis Suite (using industry standard GameBreaker software on Apple Macs) to access the sports performance level of athletes at Coleg Sir Gâr. Also to be part of the CSG Sports Academy and compete at both Welsh and British College level.

**Entry Requirements:**

Students 16 - 19 year old should normally have achieved 5 GCSEs at Grades A\* - C including Double Science, mathematics and/or English Language, Physical Education or a related BTEC level 2 First Diploma (Sport) at merit level or equivalent qualification. Mature applicants may be considered without formal qualifications at the discretion of the faculty.

**Campus:** Graig  
**Course Length:** 2 Years



## TRAVEL & TOURISM

### BTEC EXTENDED DIPLOMA IN TRAVEL AND TOURISM

**Course Features:**

- The course thoroughly explores the Travel and Tourism industry both in the UK and abroad.
- Learning experiences are provided in conjunction with partners within the industry.
- Students completing the course can progress to higher education and/or access employment opportunities.
- Course has a strong link with local employers. This ensures that students gain a realistic view of the demands and the trends of the industry
- Students will develop the skills, knowledge and understanding relevant to employment in this sector.
- The overall aim of the course is to provide a broad based introduction to the study of travel and tourism
- Students with appropriate qualifications can choose to study AS/A Level subjects in conjunction with this course. Students could do a combination of 6 or 12 units alongside AS/A Level subjects.
- Additional qualifications such as City and Guilds Certificate in Travel & Tourism (ABTAC) and an OCN Language unit can be studied
- In addition to this course, students will study six essential / key skills and or the Welsh Baccalaureate.

**Entry Requirements:**

4 GCSE's at C grade or above or GNVQ Intermediate in Leisure and Tourism or equivalent. Mature students without formal qualifications are warmly invited to apply. Acceptance onto the course is at the discretion of the faculty.

**Campus:** Graig  
**Course Length:** 2 Years





# Engineering



## The curriculum area of engineering offers a wide range of programmes for schools, further and higher education and the community.

Engineering courses are provided at the Graig, Pibwrlwyd and Gelli Aur campuses. Additionally, the curriculum area supports an extensive range of industry-based training and development programmes and commercial short courses.

Students benefit from first-class resources and the range of provision is suitable for both school leavers and mature people wishing to enter employment or to progress to higher education. Through close links with the industry they support, the curriculum area offers work experience opportunities that enable students to gain that sought-after hands-on experience. For students already working in the industries, it provides essential training and professional updating to enable technicians to keep up-to-date with changes in technologies and regulations.

Study options include full-time, part-time, work based assessment, modern apprenticeship and short courses.

### AUTOMOTIVE ENGINEERING

A Llandysul apprentice received official recognition of his automotive engineering skills as the first student to take ATA accreditation at Coleg Sir Gâr's Automotive Engineering Centre in Carmarthen.

Nathan Jones, an apprentice technician at Bassetts Citroen in Carmarthen studied the Automotive Technician Accreditation (ATA), which is a universal standard and recognition of competence within the automotive industry, governed by the Institute of the Motor Industry (IMI). Nathan is the first person to gain the qualification since the automotive centre was officially launched. As an enhanced status of accreditation, the benefits include consumer confidence and an independent quality assurance as well as technicians being issued with a photo identification card and inclusion on a public register.

#### Agricultural Engineering

- ◆ Rural Engineering
- ◆ BTEC Level 3 Extended Diploma in Agricultural Engineering (Landbased Technology)

#### Electrical & Electronic

- ◆ BTEC Programmable Logic Controllers (ND Unit 31)
- ◆ BTEC Level 3 Extended Diploma in Electrical and Electronic Engineering

#### General Engineering

- ◆ Foundation Engineering
- ◆ Design & Technology AS & A Level

#### Mechanical & Manufacturing

- ◆ EAL Performing Engineering Operations Level 2 Pre-Apprenticeship Foundation Programme
- ◆ BTEC Level 3 Extended Diploma in Mechanical Engineering

#### Motor Vehicle Engineering

- ◆ Motor Vehicle Servicing and Repair 3901
- ◆ IMI Award in Light Motor Vehicle Maintenance and Repair
- ◆ IMI Diploma in Vehicle Maintenance and Repair Level 3
- ◆ National Diploma in Automotive Engineering

#### Welding & Fabrication

- ◆ EAL Performing Engineering Operations (Fabrication & Welding) Level 2
- ◆ City and Guilds 2800 Certificate in Engineering (Fabrication & Welding) Level 3

# AGRICULTURAL ENGINEERING

## RURAL ENGINEERING

### Course Features:

- Full time training, normally three days per week, for students with a keen interest in agricultural mechanics who are either intending to join the trade or wish to progress to higher education.
- Training includes the repair, servicing and maintenance of a wide range of agricultural machinery.
- A strong emphasis on practical training on a wide range of agricultural machinery.
- Essential underpinning knowledge giving the theory behind the practical tasks carried out.
- Welding and fabrication practical and theory training.

### Entry Requirements:

No formal qualifications required but evidence of practical ability is useful. One or two days a week at a work placement is of benefit to develop practical skills but this is not essential.

**Campus:** Gelli Aur

**Course Length:** 1 Year

## BTEC LEVEL 3 EXTENDED DIPLOMA IN AGRICULTURAL ENGINEERING (LANDBASED TECHNOLOGY)

### Course Features:

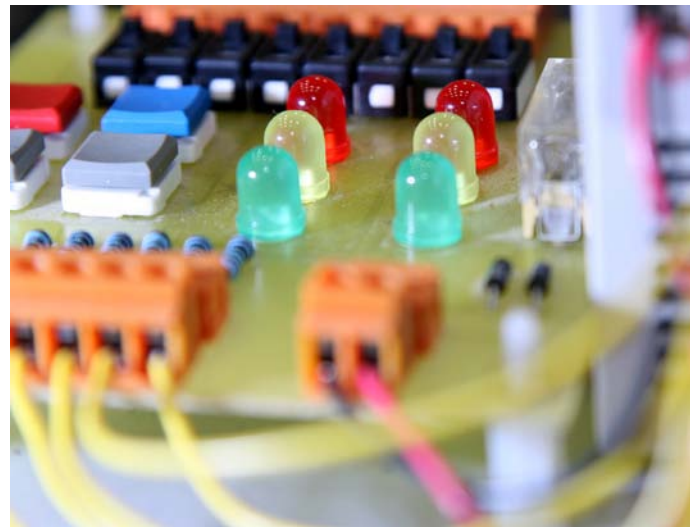
- The course provides the training and development needed for students with a keen interest in agricultural engineering who wish to progress to higher education, either at HND or degree level.
- It covers a broad base of agricultural engineering and, although practically orientated, focuses on the theory behind the engineering technologies involved in the agricultural industry particularly as applied to the design, manufacture and service requirements of agricultural tractors and field machinery.
- Agricultural and Vehicle Technology; Engine Technology; Diesel Technology; Engineering Design; Engineering Maths and Science

### Entry Requirements:

Normally students 16 - 19 years of age will require a minimum of 4 GCSEs at grades C or above, including Maths and Science or a First Diploma in a related subject or equivalent. Entry for mature students without formal qualifications is at the discretion of the faculty.

**Campus:** Gelli Aur

**Course Length:** 2 Years



# ELECTRICAL & ELECTRONIC

## BTEC PROGRAMMABLE LOGIC CONTROLLERS (ND UNIT 31)

### Course Features:

- The module is designed to introduce the student to the main operating and functional features of PLCs, how they work and how they can be used to control industrial processes.
- The aim is to develop the student's knowledge and ability to design and implement PLCs in industries which use process automation systems.
- Mitsubishi FX and A1S PLC programming with GX Developer and Allen Bradley SLC500 PLC programming with RS Logix and RS Linx
- Editing, saving, searching, downloading, monitoring online, uploading, rung and device commenting and printing are all covered for both software packages
- Hardware description of types of PLC including rack layout, CPUs, I/O cards, internal architecture and operational characteristics such as program scanning
- Practical experience in design and development of programs to control (1) Traffic Light System incorporating 6 LED's, (2) Pneumatic Robot Handling System with solenoid valves and pistons with various sensors (3) Process Control Rig to pump, heat, stir and drain water using various analogue and digital devices Communication links and networks for PLCs and MMI devices.

### Entry Requirements:

No previous experience.

**Campus:** Graig

**Course Length:** 1 Year

## BTEC LEVEL 3 EXTENDED DIPLOMA IN ELECTRICAL AND ELECTRONIC ENGINEERING

### Course Features:

- The course is designed to equip individuals with the practical skills, knowledge and understanding required for success in current employment and progression to future employment in a range of related occupations including: Design, Maintenance Engineering, Control and instrumentation, Technical Sales, Teaching, Process Control and Plc Control.
- Incorporates health and safety, environmental issues and sustainability throughout the course
- Provides the opportunity to specialise in a specific career discipline, or to choose an integrated programme
- Establish the relevance of engineering to real world problems
- The course team are permitted to recognise learners' previous achievements and experience through the Accreditation of Prior Learning (APL). Learners may have evidence that has been generated during previous study or in their previous or current employment or whilst undertaking voluntary work that relates to one or more of the units in the qualification
- Provides a common core of study with related specialist units leading to employment, professional or academic progression to higher education
- Develops the range of skills, knowledge, personal qualities and attitudes that are essential for career development and progression within the broad engineering industry and related sectors
- Focuses on the practical application of knowledge and the development of work related skills required for employment within the electrical and electronic engineering industry



## DESIGN & TECHNOLOGY AS & A LEVEL

### Course Features:

- Design and Technology is about the application of engineering skills, knowledge and understanding.
- This course takes a practical, engineering, approach to design and technology, considering designing and making products.
- The “design” topics include innovation, product analysis, human responsibility and public interaction.
- The “making” topics include materials and components, industrial and commercial practice, processes and production systems and controls.
- The course is delivered in a practical way to enable candidates to recognise the purpose of knowledge and to be able to draw on it in practical solutions
- The course encourages students to adopt an investigative approach, applying knowledge of engineering and the real world
- Coursework is intended to provide students with an opportunity to apply engineering theories and concepts
- Successful students will be able to apply knowledge of Design and Technology to understanding engineering problems and potential solutions
- AS level students complete an examination paper (unit 1) and a design and make task (unit 2);
- A level students complete an examination paper (unit 3) and a major project (unit 4)

### Entry Requirements:

Normally students 16 - 19 years of age will require a minimum of 6 GCSEs at grades A\* - C, one of which must be either GCSE Mathematics or GCSE English Language.

Entry for mature students without formal qualifications is at the discretion of the Faculty.

**Campus:** Graig

**Course Length:** AS - 1 Year. Full A Level - 2 Years.

### Entry Requirements:

Normally students 16-19 years of age will require a minimum of 4 / 5 GCSEs at Grade C or above, including mathematics and science. Alternatively, a First Diploma qualification or an equivalent related qualification in engineering will be accepted. Entry for mature students without formal qualifications is at the discretion of the faculty.

**Campus:** Graig

**Course Length:** 2 Years

# GENERAL ENGINEERING

## FOUNDATION ENGINEERING

### Course Features:

- This foundation award includes an NVQ PEO level 1 and a BTEC level 2 extended certificate which have been designed to satisfy candidates who want to acquire basic engineering competences in a sheltered, controlled environment.
- It is suitable for foundation or basic skilled candidates.
- This course enables students to provide evidence that they can perform a particular job or skill.
- It provides a good foundation with flexibility to meet both current and future engineering practices.
- The progression path is to foundation apprenticeship PEO level 2/BTEC level 3.

### Entry Requirements:

The entry requirement for this award is four GCSEs graded D to G, or equivalent level 1 qualifications, and subject to interview including diagnostic test. Candidates must demonstrate the basic skills required for this course, with a keen desire to achieve an engineering qualification.

**Campus:** Graig

**Course Length:** 1 Year

# MECHANICAL & MANUFACTURING

## REAL PERFORMING ENGINEERING OPERATIONS LEVEL 2 PRE-APPRENTICESHIP FOUNDATION PROGRAMME

### Course Features:

- The course recognises what a person is able to do at work including the skills and knowledge needed to execute the job, the ability to organise work and spotting and preventing problems.
- Designed to cover candidates who are acquiring engineering competencies in a sheltered, controlled environment
- Enables students to provide evidence that they can perform a particular job or skill
- Optional units are available to suite the needs of individuals and industry
- The qualification provides a good foundation with flexibility to meet both current engineering practices and ones in the future



- No written examinations
- Assessment is based on the completion of a Portfolio of units that includes evidence to satisfy performance criteria that involves practical work, logbook entries and knowledge questions

**Entry Requirements:**

This course is available to students sponsored by an employer and those wishing to follow a pre-apprenticeship programme. Individual employers will determine the specific entry qualifications but typically applicants should have achieved a minimum of three GCSE Grades A-C including English, maths and science subjects or NVQ level 1 or other equivalent qualifications.

**Campus:** Graig  
**Course Length:** 1 Year

**BTEC LEVEL 3 EXTENDED DIPLOMA IN MECHANICAL ENGINEERING**

**Course Features:**

- The course is designed to equip individuals with the practical skills, knowledge and understanding required for success in current employment and progression to future employment in a range of manufacturing occupations including: design, planning, drafting, welding and fabrication, finishing, machining, semiconductor processing and production engineering covering electrical, mechanical and multi-skilling requirements of the manufacturing engineering industry.
- Establish the relevance of engineering to real world problems
- Incorporate health and safety, environmental issues and sustainability throughout the course.
- The national diploma will focus on the practical application of knowledge and the development of the work related skills required for employment within the manufacturing engineering industry. It will provide a common core of study with related specialist units leading to employment, professional or academic progression to higher education.
- This qualification programme provides access to more specialist units and therefore broadens and deepens the learners experience in preparation for the world of work.
- The course team are permitted to recognise learners' previous achievements and experience through the Accreditation of Prior Learning (APL). Learners may have evidence that has been generated during previous study or in their previous or current employment or whilst undertaking voluntary work that relates to one or more of the units in the qualification.
- Develops a range of skills and knowledge, personal qualities and attitudes that are essential for career development and progression within the broad engineering industry and related sectors. They also provide learners with the necessary knowledge and skills concerning health, safety and welfare, the environment and sustainability, as it impacts on and affects the manufacturing engineering sector.
- Provides the opportunity to specialise in a specific career discipline, or to choose an integrated programme.
- Contributes to the knowledge understanding and skills required for Level 3 NVQs in Manufacturing - Engineering Design, Engineering Production and Technical Services.

**Entry Requirements:**

Normally students 16-19 years of age will require a minimum of 4 to 5 GCSEs at Grade C or above, including mathematics and science. Alternatively, a first diploma qualification or an equivalent related qualification in engineering will be accepted. Entry for mature students without formal qualifications is at the discretion of the faculty.

**Campus:** Graig  
**Course Length:** 2 Years

# MOTOR VEHICLE ENGINEERING

**IMI AWARD IN LIGHT MOTOR VEHICLE MAINTENANCE AND REPAIR**

**Course Features:**

- The IMI awards offer progression for students following a City and Guilds foundation year or those who have completed GCSEs.
- The course offers a mixture of theory and practical teaching aimed at developing the skills necessary for the motor vehicle industry.
- A strong emphasis on practical training
- Essential underpinning knowledge giving the theory behind the practical tasks carried out
- Essential training to become a fully qualified apprentice

**Entry Requirements:**

Normally students who are 16 -19 years of age require no formal qualifications but evidence of practical ability and enthusiasm for the motor vehicle industry is essential. All students will be interviewed and undergo an entry test.

**Campus:** Graig  
**Course Length:** 1 Year

**MOTOR VEHICLE SERVICING AND REPAIR 3901**

**Course Features:**

- This course offers an entry level foundation to motor vehicle mechanics. It is the first step for many who wish to progress to an apprenticeship but do not have the formal qualifications or placement to allow this to happen.
- A strong emphasis on practical training including general servicing and repair work.
- Key skills for the industry and essential underpinning knowledge core to training
- Progression to higher levels of training.

**Entry Requirements:**

Normally students 16 - 19 years of age require no formal qualifications but evidence of practical ability and enthusiasm for the motor vehicle industry is essential. All students will be interviewed and undergo an entry test.

**Campus:** Pibwrlwyd  
**Course Length:** 1 Year



## IMI DIPLOMA IN VEHICLE MAINTENANCE AND REPAIR LEVEL 3

### Course Features:

- This course forms the underpinning knowledge necessary for the motor vehicle NVQ level 3 and is intended to run parallel with that course.
- Essential training to become a fully qualified apprentice
- Development of the diagnostic skills required for a range of vehicles
- In depth training to equip students with the knowledge to carry out diagnostic tests and repairs

### Entry Requirements:

Successful completion of the level two certificate and NVQ 2 is recommended for level 3 but relevant industrial experience may be taken into account.

**Campus:** Pibwrlwyd

**Course Length:** 1 Year

---

## NATIONAL DIPLOMA IN AUTOMOTIVE ENGINEERING

### Course Features:

- The course is designed to provide a sound understanding of basic engineering principles as applied to the design, manufacture and maintenance requirements of the modern motor vehicle.
- The National Diploma provides the training and development needed for students with a keen interest in automotive engineering.
- It is practically orientated with assessed practical tasks at each level but also focuses on the theory behind the engineering technologies involved in the automotive industry.
- Progression to higher education
- In depth training in the engineering involved with automotive industry
- Work placement integral to course

### Entry Requirements:

Normally students who are 16-19 years of age will require either a minimum of 4 good GCSE grades, including mathematics and science, or an intermediate GNVQ or a first diploma in a related subject or an equivalent. Entry for mature students without formal qualifications is at the discretion of the faculty. All students will be interviewed and undergo an entry test.

**Campus:** Graig

**Course Length:** 2 Years

---

# WELDING & FABRICATION

---

## REAL PERFORMING ENGINEERING OPERATIONS (FABRICATION & WELDING) LEVEL 2

### Course Features:

- The course focuses on specific welding and fabrication skills and recognises what a person is able to do at work.
- It involves the skills and knowledge needed to execute the job, ability to organise work and spotting and preventing problems.
- Vocational course with no written exams
- Assessment based on a portfolio of evidence built up through practical work, logbook entries and completion of knowledge questions
- Progression from level 1 or equivalent qualification
- Provides entry to City & Guilds level 2 / 3
- Industry recognised qualification
- Increases job prospects
- Meets requirements of the modern apprentice scheme

### Entry Requirements:

Applicants may hold a level 1 certificate, have a keen interest in welding or fabrication. Commitment to an apprenticeship is essential. GCSE maths, English and a science subject at grade c or above is required for this course and to meet the requirements of employers.

**Campus:** Graig

**Course Length:** 1 Year

---

## CITY AND GUILDS 2800 CERTIFICATE IN ENGINEERING (FABRICATION & WELDING) LEVEL 3

### Course Features:

- The course provides practical welding and fabrication skills development as well as theoretical knowledge covering: Manual metal arc welding; Tungsten arc gas shielded welding; Metal arc gas shielded welding; Oxy-acetylene welding; Fabrication of steel; Oxy / Acetylene cutting; Engineering Drawing.
- Meets the technical certificate requirements of the modern apprentice scheme
- Industry recognised qualification
- Provides entry qualifications to higher education
- Proves competence of technical ability

### Entry Requirements:

This course would normally be a follow on from a minimum of an NVQ Level 2 or the City and Guilds 6983 course.

**Campus:** Graig

**Course Length:** 1 Year



# Hair, Beauty & Catering



# Welcome to the faculty of Hair, Beauty & Catering incorporating commercial salons and Merlin's Restaurant

The faculty operates on two of the college's campuses. Hospitality and catering provision is based exclusively at Pibwrlwyd campus (Carmarthen). Hairdressing and Beauty is delivered at both the Graig campus (Llanelli) and Pibwrlwyd campus (Carmarthen).

Purpose-built facilities provide realistic work environments for all learners within this faculty and these are equipped to the highest of standards. The facilities at both the Graig and Pibwrlwyd campus are outstanding in every respect and are also utilised by industry for specialist training events.

Both areas have extensive contact with the general public and run commercial sessions throughout the academic year. The faculty offers a range of both full time and part time courses.

## Commercial Salons

In this environment students can develop their skills in a commercial setting under the strict supervision of the highly trained professional team. To make an appointment call 01554 748371 (Salon Graig - Hair & Beauty), 01554 748252 (Salon Pibwrlwyd - Hair) or 01554 748068 (Salon Pibwrlwyd - Beauty).

## Merlin's Restaurant

The college prides itself on the training restaurant facilities at its Pibwrlwyd campus in Carmarthen. The restaurant is open to the general public and offers professional menus, exceptional value for money and quality of service, whilst at the same time allowing students to develop and train in a restaurant setting. To Reserve a Table telephone Dawn or Peter on 01554 748268 / 01554 748250.

## CELEBRITY STYLIST CUTS DESIGNER LOOKS AT COLLEGE MASTERCLASS

A stylist to the stars has inspired hairdressing students with a celebrity masterclass.

Lee Stafford, who has frequently appeared in the likes of Tatler and Vogue, Elle, Harpers and Queen and appeared in television shows such as This Morning, Big Brother and Celebrity Scissorhands came to Llanelli for an insider's peek at high-end fashion cuts - celebrity style. He used volunteer models and students to give a masterclass in basic and innovative haircutting and offered some tips of the trade and how to become more successful in the business.

### Hairdressing

- ◆ Principal Learning Qualification (PLQ) in Hair and Beauty
- ◆ Hairdressing - NVQ Level 1
- ◆ Hairdressing - NVQ Level 2
- ◆ Hairdressing - NVQ Level 3

### Beauty & Holistic Therapies

- ◆ Level 1 NVQ Certificate in Beauty Therapy
- ◆ Level 2 Diploma in Beauty Specialist Techniques
- ◆ Level 2 Diploma in Complementary Therapy
- ◆ Level 3 Diploma in Beauty Therapy Treatments
- ◆ Level 3 Diploma in Complementary Therapies Techniques

### Catering & Hospitality

- ◆ Multi-Skilled Hospitality Services - NVQ Level 1
- ◆ Diploma and Certificate in Professional Food and Beverage Service (Level 1)
- ◆ Level 1 Diploma in Introduction to Professional Cookery
- ◆ NVQ Level 2 in Professional Cookery
- ◆ Level 2 Diploma in Professional Cookery

# HAIRDRESSING

## PRINCIPAL LEARNING QUALIFICATION (PLQ) IN HAIR AND BEAUTY

### Course Features:

- A Principal Learning Qualification (PLQ), will provide learners with an insight into what is involved in an occupational area.
- This will enable individuals to develop the skills, knowledge and understanding that meet the requirements of employers.
- This qualification offers a fascinating insight into the hair and beauty industry, providing the opportunity to combine study and practical skills, bringing learning alive and making it relevant to everyday life.
- Alongside this qualification students will also undertake the NVQ Level 1 Beauty Therapy and NVQ Level 1 Hairdressing.
- Excellent facilities.
- Develops the skills, knowledge and understanding that the world of employment and employers look for.

### Entry Requirements:

There are no formal entry requirements. However, learners will need to be motivated, enthusiastic and committed to the course.

**Campus:** Graig & Pibwrlwyd

**Course Length:** 1 year



## HAIRDRESSING - NVQ LEVEL 1

### Course Features:

- This qualification provides an introduction to the world of hairdressing covering the important role of assisting and supporting stylists in the workplace.
- This course is full time consisting of three days and one evening in college.
- The learning sessions consist of practical skills, theory with essential and key skills embedded within the vocational.
- Prevention in Contact Dermatitis qualification is included within the induction programme.
- A hairdressing / beauty kit and uniform are a compulsory requirement for the course and costs approximately £220. This must be paid for prior to course commencement.
- All candidates are screened on entry to assess for any additional learning support needs - support is available to those students who qualify.
- Extra curriculum activities include fashion shows, competitions and industrial events.

### Entry Requirements:

No previous experience is required to undertake this qualification. However, a desire and self-motivation to work within the hairdressing industry is essential. There will be an interview and selection process carried out for acceptance of suitable candidates. A hairdressing kit and uniform must be purchased prior to commencing the course.

**Campus:** Graig & Pibwrlwyd

**Course Length:** Up to 1 year.

## HAIRDRESSING - NVQ LEVEL 2

### Course Features:

- This qualification is aimed at developing candidates to become junior hairdressing salon stylists and covers basic hairdressing techniques.
- It is the second level of qualification within the hairdressing framework, leading to other qualifications at levels 2 and 3.
- The course is full time consisting of three days and one evening in college.
- Extra curriculum activities include fashion shows, competitions and industrial events.
- A hairdressing kit and uniform are a compulsory requirement for the course, candidates progressing from level 1 need to ensure all kit is updated. Approximate price of kit is £220.
- This course is also part of the Hairdressing NVQ level 2 Welsh Baccalaureate intermediate route.
- On completion of the course successful candidates will have a follow up interview and skills test to establish suitability for the Hairdressing NVQ level 3 programme.
- A realistic working salon builds candidates' confidence, experience and awareness of the industrial salon environment.

### Entry Requirements:

Candidate must have completed Hairdressing NVQ Level 1 and the core Essential Skills, and be successful with the entry interview and skills test.

**Campus:** Graig & Pibwrlwyd

**Course Length:** 1 year





## HAIRDRESSING - NVQ LEVEL 3

### Course Features:

- The course covers a variety of units which encompass advanced cutting, colouring, perming skills and builds candidates' confidence, experience and helps to develop creativity whilst encouraging candidates to work independently.
- The course is full time consisting of two days and one evening in college and the remainder of week in work
- Covers a variety of more advanced hairdressing techniques and skills
- Extra curricula activities include organising and participating in fashion shows, competitions and industrial events
- Assists in developing hairdressing standards
- Deals with overcoming a wider range of client demands and the ever changing requirements of the modern salon
- A realistic working salon builds candidates' confidence, experience and develops creativity whilst enabling candidates to work independently
- A hairdressing kit and uniform are a compulsory requirement for the course. Candidates progressing from Level 2 need to ensure the kit is updated

### Entry Requirements:

Candidates must have completed Hairdressing NVQ Level 2 or have a minimum of 5 years experience within the hairdressing industry. An entry interview and skills test are required.

**Campus:** Graig & Pibwrlwyd

**Course Length:** Up to one year.

# BEAUTY & HOLISTIC THERAPIES

## LEVEL 1 NVQ CERTIFICATE IN BEAUTY THERAPY

### Course Features:

- This full time NVQ Level 1 qualification provides an introduction to the world of Beauty Therapy covering the important role of assisting and supporting therapists in the workplace.
- This course is full time consisting of three days and one evening in college
- The learning sessions consist of practical skills, theory with essential and key skills embedded within the vocation
- Prevention in Contact Dermatitis qualification is included within the induction week.
- A beauty / hairdressing kit and uniform are a compulsory requirement for the course which costs approximately £220 and must be paid for prior to course commencement
- All candidates are screened on entry to assess for any extra learning support, which is available to all students who qualify
- Extra curriculum activities include fashion shows, charity events, competitions and industrial events
- Together with this qualification you will also be undertaking the NVQ Level 1 Hairdressing and Principal Learning Qualification.

### Entry Requirements:

No previous experience is required to undertake this qualification. However a desire and self motivation to work within the beauty therapy industry is essential. There will be an interview and selection process carried out for acceptance of suitable candidates, a beauty / hairdressing kit and uniform must be purchased prior to commencing the course.

**Campus:** Graig & Pibwrlwyd

**Course Length:** One Year



## LEVEL 2 DIPLOMA IN BEAUTY SPECIALIST TECHNIQUES

### Course Features:

- This qualification is aimed at developing beauty therapists to become qualified in a variety of treatments including facials, body massage, manicure, pedicure, application and instruction on make-up, eye lash and brow treatments, eyelash perming, skin tanning and waxing.
- This course leads to further qualifications at level three.
- Two well equipped salons in the college help to provide experience and awareness of the industry environment
- Work experience for one day a week is an integral part of the programme which all students follow to create opportunities for future employment
- Extra curriculum activities include fashion shows, competitions and industrial events
- The course is full-time and consists of three days and one evening in college

### Entry Requirements:

There are no entry requirements.

**Campus:** Graig & Pibwrlwyd

**Course Length:** One Year



## LEVEL 2 DIPLOMA IN COMPLEMENTARY THERAPY

### Course Features:

- This course is designed as a formal introduction to complementary therapy.
- It gives students a chance to experience all of the main complementary therapy subjects at a basic level and also provides an opportunity to improve your communication, number and computer skills.
- It is ideal for school leavers or adults returning to education a long time after leaving school.
- Provides ideal introduction to all main complementary therapies
- Small group size for increased tutor support
- Develops essential skills to build confidence

### Entry Requirements:

None. Ideally suited to school leavers or adults returning to education after a long time.

**Campus:** Graig

**Course Length:** One Year

## LEVEL 3 DIPLOMA IN BEAUTY THERAPY TREATMENTS

### Course Features:

- The course is recognised internationally within the industry
- Studies include all aspects of body and facial electrical treatments and body massage
- Option qualifications are nail enhancements and advanced hand and nail art techniques, epilation
- Additional qualifications are spa treatments, hot stone massage, pre-blended aromatherapy
- This Level 3 course is the highest level of beauty therapy qualification achievable

# CATERING & HOSPITALITY

## MULTI-SKILLED HOSPITALITY SERVICES - NVQ LEVEL 1

### Course Features:

- This course provides an introduction to the hospitality industry for those with little or no experience of this growth area.
- At the same time as studying for the NVQ, candidates will follow a programme of basic or key skills.
- Practical activities form a large part of the course and the college's training restaurant and kitchens provide the environment for this.
- Students have to work on a rota basis to cover evening sessions at the training restaurant.
- All students progressing to the next level follow a five week placement at the end of the third term. This placement is usually residential and unpaid.
- All learners have to purchase uniform and knife set which will cost approximately £270.00.
- Students will be expected to attend college one late evening per week on a regular basis as part of their training.

### Entry Requirements:

No formal entry requirements, but a genuine desire to follow the course must be demonstrated. You should have an interest in food preparation and cooking, 4 GCSEs Grade D-G supported by a reference from your school - Due to food safety and awarding body requirements during practical sessions, all students must remove all visible jewellery, including facial piercing and keep nails short and polish free, wear professional dress for practical sessions, have full dexterity and have a good standard of personal hygiene and be able to stand for long periods of time (support arrangements can be put in place if required).

**Campus:** Pibwrlwyd

**Course Length:** The maximum length of course is 1 year. However many students complete before this and will be given the opportunity to start the next stage of their studies a year early.

## DIPLOMA AND CERTIFICATE IN PROFESSIONAL FOOD AND BEVERAGE SERVICE (LEVEL 1)

### Course Features:

- This course allows those wishing to gain knowledge and practical skills to work in front of house.
- Students will also learn essential skills in areas like safety and hygiene, handling payments, bookings, bar service and working as a team.
- There will be continuous assessments to ensure you reach the required level of competency.
- Learners will get to work in a real working environment within the college's training restaurant in the kitchen and front of house.
- Learners will have to purchase a restaurant and kitchen uniform pack.
- Learners will have to attend on a regular basis on a Thursday evening on a rota basis.



- This full time course runs over 3 days and 1 evening a week for one year
- Students are required to purchase a Level 3 kit and uniform/shoes prior to starting the course
- Regular group and individual tutorial sessions are scheduled throughout the year to support the learner on the programme
- Learning support can be arranged for students with particular learning difficulties
- Successful candidates may apply for work in salons, spas, health hydros and cruise ships or consider further studies in Holistic Therapies.

### Entry Requirements:

VTCT Level 2 Diploma in Beauty Specialist Techniques or VTCT Level 2 NVQ Diploma in Beauty Therapy General or an acceptable equivalent qualification.

**Campus:** Graig

**Course Length:** One Year

## LEVEL 3 DIPLOMA IN COMPLEMENTARY THERAPIES TECHNIQUES

### Course Features:

- This is a one year professional level course that will give you both qualifications and experience in a range of complementary therapies including Body Massage, Aromatherapy and Reflexology.
- The practical nature of the qualification will fully equip you for work in the complementary therapy industry.
- Provides training in a wide range of therapy skills.
- Develops skills on paying clients to enhance practical ability.
- Leads to fully qualified practitioner status at Level 3.
- Provides a work placement to establish links with industry.
- Provides an opportunity to improve literacy skills.

### Entry Requirements:

Level 2 Diploma in Complementary Therapy or a good standard of general education for mature students.

**Campus:** Graig & Pibwrlwyd

**Course Length:** One Year



#### Entry Requirements:

Learners will need to attend an interview and a short test. They also need to have a reasonable understanding of maths and English. Students should also have an excellent attendance record, social skills and behaviour. In addition, a commitment to study.

**Campus:** Pibwrlwyd

**Course Length:** One Year

## LEVEL 1 DIPLOMA IN INTRODUCTION TO PROFESSIONAL COOKERY

#### Course Features:

- This is a one year course that is aimed at students who wish to enter into the Catering and Hospitality industry.
- The course provides practical skills and associated theoretical knowledge providing a broad understanding of kitchen operations for those aspiring to work in the industry.
- Natural progression to Level 2 Diploma in Professional Cookery.
- Qualified tutors with relevant industrial experience.
- It is essential that students purchase knives and uniform prior to starting the course.
- Five week industrial placement in good establishments.
- Up-to-date kitchen equipment.
- Realistic working environment catering for a busy restaurant including functions and small parties.
- Industrial gourmet evenings planned and catered by professional industry chefs.
- Invitations to professionals from our industry to talk to learners about their experiences.

#### Entry Requirements:

There are no recommended entry qualifications, however, students will be required to attend an interview and take a diagnostic test to determine students literacy and numeracy levels.

**Campus:** Pibwrlwyd

**Course Length:** One Year

## NVQ LEVEL 2 IN PROFESSIONAL COOKERY

#### Course Features:

- This programme is suitable for candidates who are working in the catering industry and are unable to attend college on a day release basis.
- All the training should be provided by your establishment i.e chef de partie.
- It is about doing a job and being competent in producing food to your establishments standards.
- Practical activities form a large part of the course and the student's workplace must be able to provide the environment for this

- Students have the opportunity to gain several other certificates such as food hygiene and selling skills
- All learners have to be equipped with uniform and knife set
- NVQs assess practical performance and a persons ability to perform a job role as well as providing knowledge.
- Students will be expected to attend college one late evening per week on a regular basis as part of their training.

#### Entry Requirements:

Must be employed in a kitchen with a positive attitude and a keen interest in food.

**Campus:** Pibwrlwyd

**Course Length:** The usual time taken to complete the programme is one year. More able students can add extra units to enhance their portfolio if they progress quickly.

## LEVEL 2 DIPLOMA IN PROFESSIONAL COOKERY

#### Course Features:

- This course provides knowledge of kitchen operations and the development of high quality practical skills.
- The content of this qualification will ensure that students build on the foundation skills developed in the level 1 diploma or within the workplace.
- Students will be able to prepare and cook a range of commodities; whilst the investigative and theoretical units provide a broad understanding of all aspects of kitchen operations, essential for those aspiring to work in the industry.
- Students have the best of both worlds learning through practical training and associated theoretical knowledge which provides a broad understanding of all aspects of kitchen operations.
- Where specific needs are identified, support is available to help students through the course.
- The faculty has a training restaurant open to the public where students learn through working in a realistic environment.
- The tutors are fully qualified and have relevant industrial experience.
- Students will have the opportunity to progress to the level 3 diploma in Advanced Professional Cookery.
- Outside speakers and educational trips are organised to enhance the curriculum.
- Students are required to purchase uniform and chef knives.

#### Entry Requirements:

It is recommended that students will have achieved the level 1 Diploma in Introduction to Professional Cookery, however, depending on age and experience admission to the course may be granted at the discretion of the college. Students will be required to attend an interview and undertake a diagnostic test to determine students' literacy and numeracy levels.

**Campus:** Pibwrlwyd

**Course Length:** 1 year

Landbased



## The Faculty of Land-based Studies provides a diverse range of courses at two of the college campuses Pibwrlwyd and Gelli Aur. The range of courses include Equine, Animal care, Horticulture, Flower arranging, Forestry, Countryside Management and Agriculture.

The faculty of Land-based Studies is based at Gelli Aur farm near Llandeilo and the Pibwrlwyd campus, Carmarthen and offers a range of courses from NVQs, First Certificates and National Diplomas to Higher Education courses. Training courses are also delivered at the National Botanical Gardens, The National Trust, Dinefwr Park and Pembrey Country Park, Llanelli.

The college is the lead provider for Agricultural provision at level three in Wales, with a Purpose built agricultural campus at Gelli Aur including a science laboratory, seminar rooms, ICT suites and engineering workshops. Horticulture courses are available at the National Botanic Garden of Wales, where students work closely with garden staff.

Facilities at the Pibwrlwyd campus include an indoor riding arena with disabled access, an aviary and extended exotic animal care practical facilities incorporating reptiles, fish and amphibians.

Ensuring students enjoy a rewarding and stimulating learning experience that prepares them for a life time of employment in the land based sector is our aim; and we are proud of our students achievements.

### STUDENTS WORKING WITH COUNTY SCHEME TO PROTECT WILDLIFE

Countryside management students at the college's Gelli Aur campus have been working in partnership with the Tywi Afon yr Oesoedd scheme to help protect wildlife.

The scheme, which is a partnership between Carmarthenshire County Council, The National Trust, Countryside Council for Wales and Menter Bro Dinefwr is funded by the Heritage Lottery Fund. Coleg Sir Gâr students have been playing their part by building an artificial otter holt - constructing a resting site generally needed by otters during the daytime as nocturnal animals. "The students were thrilled to see signs of otters visiting the holt within a few weeks of completing the project," said course tutor David Stacey.

#### Agriculture & Countryside Management

- ◆ BTEC Diploma in Agriculture Level 2
- ◆ BTEC Extended and Subsidiary Diploma in Countryside Management Level 3
- ◆ BTEC Extended Diploma in Agriculture Level 3

#### Animal Studies, Equine & Horticulture

- ◆ City & Guilds Level 1 Diploma Landbased Studies (Animal Care) with Welsh Baccalaureate Foundation Diploma
- ◆ City & Guilds and NPTC Level 2 Diploma in Horse Care
- ◆ City and Guilds / NPTC Level 2 Diploma in Animal care
- ◆ City & Guilds Level 3 Extended Diploma in Animal Management
- ◆ City & Guilds Level 3 Extended Diploma in Horse Management

# AGRICULTURE & COUNTRYSIDE MANAGEMENT

## BTEC DIPLOMA IN AGRICULTURE LEVEL 2

### Course Features:

- This Level 2 course covers the basics of agricultural production.
- To obtain the full Diploma the modules delivered are Livestock production, Business management, Estate skills, Machinery operations, Grassland production and Forage crops.
- This course involves an intensive 6 week block of Industry Experience.
- There is an additional day for the level 2 students selected for the PTA (Pathways to Apprenticeship) programme. This will be a Thursday.
- Develops practical skills and understanding
- Modular course
- Excellent resources and facilities

### Entry Requirements:

No formal qualifications are required. Relevant agricultural experience would be an advantage. Entry is subject to interview.

**Campus:** Gelli Aur

**Course Length:** 1 Year



## BTEC EXTENDED AND SUBSIDIARY DIPLOMA IN COUNTRYSIDE MANAGEMENT LEVEL 3

### Course Features:

- This is a two year full time Diploma in Countryside Management which is designed to provide both practical skills training combined with scientific, environmental and managerial studies.
- Progression to Higher education on successful completion
- Modular course
- Development of practical skills and underpinning knowledge
- Excellent resources and facilities.

### Entry Requirements:

Normally students 16 - 19 years of age will require a minimum of 4 GCSEs at grades C or above, Intermediate GNVQ or a First Diploma in a related subject or equivalent. Entry for mature students without formal qualifications is at the discretion of the Faculty.

**Campus:** Gelli Aur

**Course Length:** 2 Years



## BTEC EXTENDED DIPLOMA IN AGRICULTURE LEVEL 3

### Course Features:

- A vocational course suited to well motivated intelligent practical farming students.
- The course covers all aspects of agriculture.
- This includes working with livestock, grassland, forage crops and machinery.
- It has UCAS points tariff and the top grade that could be achieved, a D\*D\*D\* (triple distinction) is equivalent to 360 UCAS points
- The campus has excellent modern teaching facilities and is sited on the college farm which makes access to practicals very easy.
- A caring committed tutorial team that ensures students happiness and success.

### Entry Requirements:

Normally students 16 - 19 years of age will require a minimum of 4 GCSEs at grades C or above, Intermediate GNVQ or a First Diploma in a related subject or equivalent. Entry for mature students without formal qualifications is at the discretion of the Faculty.

**Campus:** Gelli Aur

**Course Length:** Four days a week Tuesday to Friday for 2 Years. From February of the first year there is a period of work placement for 3 months.

# ANIMAL STUDIES, EQUINE & HORTICULTURE

## CITY & GUILDS LEVEL 1 DIPLOMA LANDBASED STUDIES (ANIMAL CARE) WITH WELSH BACCALAUREATE FOUNDATION DIPLOMA

### Course Features:

- Considerable practical experience with dogs, rabbits and guinea pigs, reptiles and amphibians, birds and fish.
- Assessment is mainly carried out while undertaking practical tasks with some oral questioning.
- Visits and practical investigations widen the learning experience
- The course also includes the Foundation Welsh Baccalaureate, basic skills literacy and numeracy and Essential Skills IT.
- Work experience can improve employment prospects
- Health & Safety is an important part of the course and will be assessed both practically and with a short on-line multi-choice test
- A useful portfolio of all the course units acts as a basic reference resource for future courses or employment

### Entry Requirements:

Entry is subject to successful interview and two GCSEs at any level or their equivalent.

**Campus:** Pibwrlwyd

**Course Length:** 1 Year



## CITY & GUILDS AND NPTC LEVEL 2 DIPLOMA IN HORSE CARE

### Course Features:

- A competition yard with horses schooled for dressage and show jumping.
- The opportunity to take BHS Stage examinations and the Riding and Road Safety Test as part of the course.
- A supportive environment in which to develop your skills.
- Work experience and Essential Skills increase your chances of employment after completing the course.
- Opportunities to compete on your own or college horses

### Entry Requirements:

Three GCSEs at grade C or above. Entry is subject to successful interview, a written assignment and riding assessment. Applicants should have some relevant work experience.

**Campus:** Pibwrlwyd

**Course Length:** 1 Year



## CITY AND GUILDS / NPTC LEVEL 2 DIPLOMA IN ANIMAL CARE

### Course Features:

- The course covers a wide variety of species.
- Work experience forms an important part of the course - students must spend the equivalent of 4 weeks at a work placement.
- Work placements are checked for health and safety by Careers Wales.
- Students are continually assessed during their course by a combination of methods: Oral assignments, Group projects, Practical assessments, Written tests, External short multiple choice exam.
- Learning support is provided in class and through the Study Support Centre if required.
- Regular tutorials monitor student progress.
- Essential Skills Wales IT, Communication and Application of Number are incorporated in the course.

### Entry Requirements:

Entry is subject to successful interview, together with satisfactory GCSE results (3 Cs or above) and the successful completion of a set assignment. The course is suitable for school leavers or mature students with relevant industrial experience or wishing to change careers. Students will need to secure a placement at which to undertake the compulsory work experience component of the course. Written confirmation by the placement provider is required before students can be enrolled.

**Campus:** Pibwrlwyd

**Course Length:** 1 Year



## CITY & GUILDS LEVEL 3 EXTENDED DIPLOMA IN ANIMAL MANAGEMENT

### Course Features:

- The Pibwrlwyd animal unit encompasses a specialist aquatics room housing a range of tropical and coldwater aquatic species, an exotics unit housing a broad range of reptile, amphibian and invertebrate species, a small mammal room housing both domesticated and exotic mammal species, and an aviary housing a number of bird species, rabbits and guinea pigs.
- Field trips and visits are sometimes arranged as part of the course and relate directly to the assignments and research that needs to be undertaken by the students in order to achieve certain units.
- Students have access to both rescue and breeding dogs at Cenninpedr Kennels / Great Dane Care charity.
- The Pibwrlwyd campus also includes a number of wildlife habitats for students to study including an area of untouched woodland, the river Nant Pibwr, a wildlife pond, hedgerows and grassland.
- Students may need to record observations of animal behaviour when monitoring livestock or conducting wildlife population monitoring, and habitat surveys; students must have their own camera for visits and practical sessions in order to collect evidence for their assignments / portfolios.
- Students are continuously assessed using a variety of assessment methods.
- Students have access to learning support provided by the Study Support Centre.
- The course includes compulsory Essential Skills: Communication, Application of Number and IT.
- Elected student representatives put forward the views of the class and discuss matters relating to the course during regular course team meetings. Meetings are held each term between staff and students representatives

### Entry Requirements:

Students wishing to apply for entry onto the Extended Diploma in Animal Management will need to have achieved a Merit in the Level 2 Diploma, or a minimum of 5 GCSEs at grade C or above, or Pass in the Level 3 Subsidiary Diploma in Animal Management, ideally having achieved 90 credits. Successful applicants will need to obtain written confirmation of a work placement before they can be enrolled. The course includes eight weeks compulsory work placement over two years.

**Campus:** Pibwrlwyd

**Course Length:** 2 Years



## CITY & GUILDS LEVEL 3 EXTENDED DIPLOMA IN HORSE MANAGEMENT

### Course Features:

- Students are timetabled for one week academic and one week on the college yard to receive training and be assessed in practical tasks.
- The college has a selection of well-schooled horses suitable for dressage and show jumping which are ridden in an indoor and an outdoor arena.
- The college has been approved as a British Horse Society Examination Centre and also offers Riding and Road Safety tests.
- The course includes some visits to specialist equine establishments.
- Students study Essential Skills in Communication, Application of Number and ICT as a mandatory part of the course.
- Students have the opportunity to participate in examination training days delivered by BHS instructors and examiners.

### Entry Requirements:

NPTC Level 2 Diploma in Horse Care at Merit or above, equivalent GCSEs, British Horse Society qualifications, or NVQ Level 2 Horse Care. The offer of a place is dependent on interview, completion of a written assignment and a riding assessment. Applicants must have some relevant industrial experience and a written offer of work placement before enrolment on the course.

**Campus:** Pibwrlwyd

**Course Length:** 2 Years



Apprenticeships



## Interested in earning while you're learning?

Apprentices are employed and earn an Apprenticeship wage of at least £2.50 an hour. Get an opportunity to work alongside experienced staff to gain job-specific skills. You'll also get recognised qualifications and full support during your training.

### The key benefits of an Apprenticeship:

- Earn a salary
- Get paid holidays
- Receive training
- Gain qualifications
- Learn job-specific skills

### Foundation Apprenticeship - Level 2

Anyone over school leaving age can start a Foundation Apprenticeship. There are no pre-determined entry qualifications, but employees will need basic reading, writing and number skills. They will also need to be enthusiastic and committed within their vocational area showing a keenness to want to learn and develop alongside the needs of the business. As long as they are employed for 16 hours or more per week the Foundation Apprenticeship is an ideal opportunity to develop a member of staff aligned to the aspirations and progression of the organisation.

The main qualification/s undertaken will be at Intermediate Level 2 over a period usually of 18 – 24 months. Day release opportunities to college alongside work place activities supported by college staff will vary depending upon the chosen vocational route.

### Apprenticeship - Level 3

The Apprenticeship programme is a Level 3 programme of learning and development ideally suited to employees having some element of responsibility within their job role. Whether progressing from the Level 2 Foundation Apprentice programme or the Apprenticeship Level 3 programme will continue to develop the skills needed to effectively coordinate and be responsible for key functions and activities within your organisation.

The Apprenticeship training programme could take 18 months to 2 years, depending on the vocational route and employee's job roles. Day release opportunities to college alongside work place activities supported by college staff will vary depending upon the chosen vocational route.

### Higher Apprenticeships - Level 4

Higher Apprenticeships are university level (Level 4) programmes for professionals wanting to develop advanced skills in the workplace.

Employees will need to be 18 years or over and working in a supervisory or management position. They will gain a Level 4 vocational qualification enabling a stepping stone to study part-time all the way up to a Degree or Foundation Degree.

### What Apprenticeship frameworks are on offer at Coleg Sir Gâr?

Coleg Sir Gâr currently offers the following Apprenticeship programmes:

- Accounting
- Agriculture
- Business & Administration
- Catering & Hospitality
- Beauty
- Construction
- Engineering
- Equine
- Hairdressing
- Health & Social Care
- Land based Service Engineering
- Management
- Motor Industry
- Plumbing
- Welding & Fabrication

### How do I find out more about Apprenticeships?

For more information please contact the Admissions Unit at Coleg Sir Gâr:

☎ 01554 748179

✉ [admissions@colegsirgar.ac.uk](mailto:admissions@colegsirgar.ac.uk)





# Traineeships

(Pre-Apprenticeship Programme)

## The Traineeships Programme will be up and running at Coleg Sir Gâr from 1 August 2011. It was formerly called the Skill Build Programme. A learner can come onto the Traineeship Programme and later progress onto an Apprenticeship Programme.

Learners who are 16 – 18 will be referred from Careers Wales who will determine the learner's needs and length of time on programme. This new Programme is split into three strands:

### Engagement Phase

This Programme is for those learners who are not focussed on a specific occupation. Programmes will include 'Goals' which is a motivational course, Essential Skills, confidence building and job seeking skills. Learners are paid £30 per week Training Allowance by the college for attending between 12 - 21 hours per week.

Work Placements or tasters are sourced to help with their programme. Learners receive all the necessary support, mentoring and guidance they need to progress onto a Level 1 Qualification.

### Traineeships - Level 1

This Programme is aimed at those learners who are occupationally focussed and have the ability to undertake a Level 1 Qualification. Learners will receive £50 a week (Training Allowance) paid by the college. Work placements will be sourced as part of the Level 1 course.

Traineeship Level 1 courses are available at Coleg Sir Gâr in the following occupational areas:

- Hairdressing
- Beauty
- Construction
- Engineering
- Business Administration

### Bridge to Employment

This Programme is only for those that have progressed from the Level 1 strand.

The learning is aligned to the apprenticeship framework in the learner's chosen occupational area. The learner will attend college one day a week to follow the Level 2 Framework and be in work placement for 4 days.

The employer will be encouraged to offer the learner employment once the learner has completed 10 weeks of their programme.

### How do I find out more about Traineeships?

For more information please contact Wyn David, Team Leader Skill Build

☎ 01554 748183

✉ [wyn.david@colegsirgar.ac.uk](mailto:wyn.david@colegsirgar.ac.uk)

# Pathways to Apprenticeships



Pathways to Apprenticeships (PTA) is a one year full-time intensive training programme for young people to acquire the underpinning knowledge and skills that would be required for successful completion of the full apprenticeship framework. The Pathway will provide you with sector specific skills to progress to a full apprenticeship once the training has been completed. The programme is part funded by the Welsh Government and the European Social Fund.

#### Who is it for?

Learners must be aged between 16 - 24 years and a resident ordinarily living in Wales on the first day of the academic year 2011/12 or an EU national who is resident in Wales on the first day of the academic year 2011/12 who meets the residency requirements set out in the EMA Wales scheme.

#### What "Pathways" are available at Coleg Sir Gâr?

At Coleg Sir Gâr we deliver nine sector specific programmes of qualifications to meet their industry requirements. They are:

- Automotive
- Construction
- IT skills and Telecoms
- Food Manufacture
- Agriculture
- Hospitality
- Engineering
- Sports & Leisure
- Plumbing and Electro Technical

#### What level is the training?

Learners will achieve a level 2 vocational qualification from an apprenticeship framework specified by the relevant Sector Skills Councils. As part of the course you will also participate in work placement opportunities in order to equip you with additional skills experience.

#### What are the progression routes after PTA?

Once you have completed your "Pathway" and work placement, you will have a wealth of skills and experience that will put you in prime position for recruitment by an employer onto an apprenticeship framework at level 3.

#### What support is available?

Subject to satisfactory attendance and progress you will receive £30 per week whilst in training. You may also be eligible for a toolkit.

#### How do I apply?

Contact our Admissions Unit who will direct you to a member of our team, who will be able to assist you to decide whether the Pathway to Apprenticeship is the right route for you.

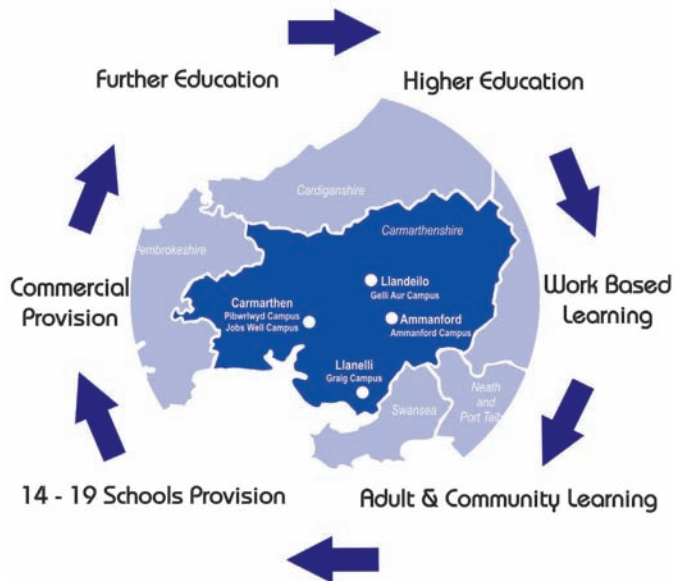
☎ 01554 748179

✉ [admissions@colegsirgar.ac.uk](mailto:admissions@colegsirgar.ac.uk)



# USEFUL INFORMATION

## REGIONAL COLLEGE OF FURTHER, HIGHER & ADULT EDUCATION



## FACTS & FIGURES

### Products & Process

• No of AS Subjects	33
• No of A level Subjects	31
• No of Enrolments	23,811
• No of Learners	9,353 (51:49 female:male)
• No of HE learners	988
• No of FE learners	6748
• No of WBL learners	508
• No of full time FE learners	2969
• No of full time HE learners	369
• No speak Welsh	41%
• 14-19 Schools	25
• School pupils	1114

### Income

• Annual "Turnover"	£30.2m
• Further Education Funding	£18m
• Higher Education Funding	£3.8m
• Work Based Learning	£1.6m

### Recent Achievements

- 2010/11 Beacon Award for 14-19 partnership
- 2010/11 National Training Award for Employer Partnerships
- 2010/11 Wales Regional NTA Award
- 2011 Worldskills London, David Morgan (Webdesign) and Rhydian Williams (Carpentry) - only 2 from Wales in UK Worldskills Squad
- 2011 Colegau Cymru Digital Learning Resources
- 2011 Learner of the Year

### Staffing

• Total staff	848
• Full Time	347
• Part Time	210



## OUR FOUR KEY THEMES

### Our Culture - Our aims are:

- To make learners the focus of our College
- To inspire our learners and provide them with an enjoyable and enriching experience
- To promote a culture of respect, inclusion and well being throughout our College, ensuring equality for all
- To be a safe, caring and supportive College, that welcomes learners from a wide range of backgrounds, ages and ability
- To promote a bilingual culture, the Welsh language and ethos within our College
- To promote a culture of respect for the environment and an ethos of global citizenship

### Our Service - Our aims are:

- To secure high levels of achievement, employment and progression for our learners
- To develop learners' skills, up to world class standards
- To deliver a broad curriculum, inclusive of 14-19, FE, HE, WBL, ACL and commercial training, that is responsive to our stakeholders' needs
- To be responsive to local community needs and regeneration
- To work with key stakeholders in securing value adding partnerships
- To develop and sustain effective employer engagement
- To support the Welsh Assembly Government in meeting its vision for education and training in Wales

### Our Delivery - Our aims are:

- To have learner outcomes as the key measure of success
- To achieve and value excellence in Teaching and Learning
- To achieve innovation and excellence in all our activities, through a culture of continuous improvement
- To provide effective leadership and governance, that enables us to achieve our mission
- To ensure consistency in policy, procedure and practice
- To communicate effectively

### Our Resource - Our aims are:

- To value and invest in our staff
- To work together as staff for the benefit of our learners
- To guarantee a safe and healthy learning and working environment
- To ensure access to high quality information to inform our decision making
- To create a consistent and sustainable physical resource, that exploits modern technology, and minimise its environmental impact
- To secure value for money an a wide range of income streams, to ensure the future of our College
- To target additional income streams, to reduce our reliance on core public funding
- To create cash surpluses in order to re-invest in the future of our learners

## STUDENT ACHIEVEMENTS

- **Cliff Williams** represented Wales and the UK in WorldSkills Calgary 2009 in Carpentry achieving 10th place
- **Mathew Evans**, UK Gold Winner Skillbuild Painting & Decorating
- **Rhydian Williams**, UK Silver Winner Skillbuild Joinery
- Welsh Assembly Government National Training Awards Modern Apprenticeship Winner **Alex Chu**
- **Richard Schmid** received the Wales Region Gold Award at Skillelectric 2010
- **Eifyn Tandy** awarded the Wales Region Silver Award in SkillPLUMB 2010
- Both **Michael Luckman** and **Dwynwen Leonard**, Diploma in Professional Cookery students won Bronze medals in the WorldSkills UK hospitality competition 2010
- **Lee Rees** represents Wales 7's senior rugby team in IRB Tournaments in Dubai and South Africa
- **Hefin Jones** awarded "Young Engineer for Britain" award for Product Development and Marketability
- **Hannah Lintin** Silver Medal South Wales Worldskills UK Restaurant Service Award
- **Hannah Lintin** Bronze Medal All Wales Worldskills UK Restaurant Service Award
- **Jackie Lewis**, **Nadeen Smith**, **Pamela James** and **Mary Rees** awarded Bronze Medals in the Salon Culinaire Decorated Celebration Cake Competition
- **Dwynwen Leonard** and **Michael Luckman** awarded Bronze Medals at UK Skills UK Final for Cake Decoration
- **Nadeen Smith** awarded Gold Medal in Cake International Decorated Celebration Cake Competition
- EEF Manufacturing Awards for Wales, Apprentice Awards, Gold Award **Alex Chu**
- EEF Manufacturing Awards for Wales, Apprentice Awards, Silver Award **Nick Kidwell**
- CAD Worldskills Wales Regional Competition - Gold Award, **Timothy Taylor**
- CAD Worldskills Wales Regional Competition - Silver Award, **Richard Harvard Griffiths**
- CAD Worldskills Wales Regional Competition - Bronze Award, **Mathew Jenkins**
- Institute of Carpenters Gold Award Winners - **Jay McAndrew** (under 21) and **Thomas Twigg** (over 21)
- **Angharad James**, Royal Welsh Agricultural Society Student of the Year 2010