

“The overseas learning and living experience at the **University of Gloucestershire** has provided me with a great chance for personal development and to become a global citizen.”

Xiaoyu Ling, China
MBA Business Administration
International Executive (Students' Union)

2012
International Guide

 UNIVERSITY OF
GLOUCESTERSHIRE
at Cheltenham and Gloucester

Welcome to the University of Gloucestershire

Wherever in the world you are reading this international guide, I would like to extend warm greetings from the University of Gloucestershire.

At Gloucestershire we have a long history of more than 170 years of offering high quality education to students from all over the world. With this experience we aim to make your course and stay at the University of Gloucestershire one of the defining moments in your life.

Students from more than 40 countries choose the University of Gloucestershire for a wide variety of industry-relevant undergraduate, postgraduate and research level courses. Our international students tell us how much they enjoy our safe, vibrant, central location and the excellent learning environment.

The university has strong links with partner institutions around the world, offering students in some cases the ability to study for a University of Gloucestershire award in their own country. Members of our helpful and friendly international team regularly travel overseas to meet and advise prospective students. Visits are advertised on our website so please do look out for where and when they are visiting next.

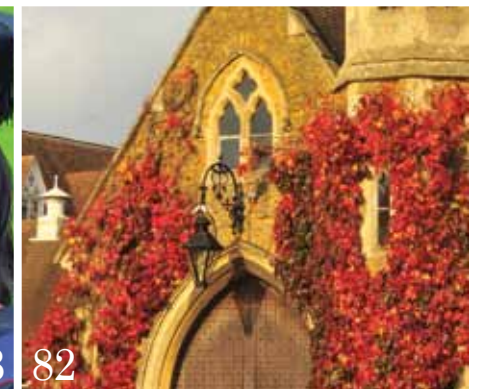
Going to university is one of the most important decisions you can make. I hope that this guide is useful to you and reflects the supportive, innovative, and culturally rich academic and social environment that exists here at the University of Gloucestershire. I hope you enjoy reading more about us and seriously consider joining us here at the university; I very much look forward to meeting you.



Stephen Marston
Vice-Chancellor
University of Gloucestershire

Contents

Choosing Gloucestershire	2
Academic Excellence	6
Student Experience	12
Location	20
Employability	24
International Welcome Week	30
Supporting International Students	34
English Language Support	36
International Student Services	40
Student Services	44
Accommodation	46
Finance and Scholarships	54
Your Choices at Gloucestershire	58
Campuses	60
Academic Departments and Research Centres	68
Types of Degree	80
Degree Courses	84
English Language Courses	90
How to Apply	94
Our Partners	98
What Next	102



Please note that this guide is for degree-seeking international students who are not ordinarily resident in the European Union. EU and Study Abroad students will find that some sections, particularly those that relate to funding and immigration, do not apply to them.

Five reasons why our students *choose Gloucestershire.*

Whether you are planning to study at the undergraduate or postgraduate level there are plenty of reasons to choose Gloucestershire.

- 1 ACADEMIC EXCELLENCE
- 2 STUDENT EXPERIENCE
- 3 LOCATION
- 4 EMPLOYABILITY
- 5 WELCOMING



Students have been choosing the University of Gloucestershire, and its founding colleges, for over 170 years.

There are approximately 11,000 students studying at our three campuses in Gloucestershire, with a further 1,000 studying our courses by distance learning or through our partner colleges both in the UK and overseas.

Almost 10% of our student body is comprised of international students representing 44 countries.

The diversity of our campuses is further enhanced by the hundreds of students from around the world who choose to study with Gloucestershire through a student exchange programme.

With over 100 academic courses there is plenty of choice for our international students.



“I chose the university because of the reputation of the Department of Business and Management, the friendly atmosphere and I really liked the look of Cheltenham.”

Judith Jansen, Holland

BA (Hons) International Marketing Management



“The University of Gloucestershire offered the course that I wanted in a great location with good facilities.”

Robert Millar, Zimbabwe

BA (Hons) Events Management with Sport & Leisure Management



“For Gloucestershire, *academic excellence* is not just about the expertise of our academics as teachers and researchers, it is also about how we as a university help each and every student fulfil their potential while they are with us.”

Julie Thackray Academic Registrar and Clerk to Council





The University of Gloucestershire is known for its innovative, high quality teaching and learning, building on its 170-year heritage and its success in nurturing and developing a thriving community dedicated to the pursuit of knowledge.

Our Heritage

The motto of Cheltenham is Health and Education. This local commitment to education can be seen in the heritage of the University of Gloucestershire. The university can trace its roots back to the early 19th century through the establishment of the Cheltenham and Gloucester Mechanics Institute, the Cheltenham Training College and the Cheltenham Art School.

Our University

The University of Gloucestershire is committed to academic excellence and ensuring the quality of our courses, teaching and research. This is evidenced by the strength of our departments, the national and international standing of our research and, most importantly, the commitment of our staff in helping all our students succeed in their studies.



“I considered three universities but I chose the University of Gloucestershire as its faculty was among the best in the country”

Jonathan Selvan, India
MBA Hospitality

Faculty of Applied Sciences

The Faculty of Applied Sciences brings together a group of academic subjects, anchored by programmes in exercise sciences and hospitality management, with further opportunities in the fields of psychology and events.

Faculty of Media, Arts and Technology

The Faculty of Media, Arts and Technology brings together the highly respected legacy of art and creative education, embedded in the history of the Cheltenham Art School. The faculty has key training and research strengths in art & design and humanities.

Faculty of Business, Education and Professional Studies

The Faculty of Business, Education and Professional Studies leads the university's contribution to economic recovery and future growth in the county and offers programmes developing skills for life leading to a diverse and growing range of employment options. The faculty hosts the university's Centre for Enterprise and Innovation.



“The tutors were very good at encouraging us to explore our own ways of thinking.”

Yan Li, China
MA Marketing Management

Our Courses

All of our courses are designed with our students' needs in mind. Whichever course you choose you will have the opportunity to explore your subject in depth, guided by the support of our expert lecturers. All of our courses enable students to engage in research, developing your analytical skills and independent learning.

Our courses have a global outlook, including an internationally relevant curriculum, with local and international field trips and the option to spend a semester abroad on a student exchange.

To enhance our students' employment prospects our curriculum is developed to be industry-relevant. Many of our programmes give students commercial exposure through guest speakers, short and long term work placements and internships.

Many of our courses are affiliated with internationally recognised professional organisations and some enable students to take additional professional examinations and qualifications alongside their degree study, adding further value.

Supporting your Academic Success

Every student is assigned their own Academic Review Tutor and is part of a small academic group. Through group and one-to-one meetings they support you through induction, and review your progress throughout the year. At the end of term they will provide vital feedback with an annual 'Academic Health Check'.

Learning Centres

Our Learning Centres deliver integrated free internet and email access, library, computing and media support services. Wireless internet access is available on all campuses. An induction session can help you get to know what resources are available and our Learning Centre staff are always there to help.

Students often study best in different environments, so we offer a range of spaces for you to make the most of your studies. We have quiet rooms as well as active learning zones.

Centre for Academic Writing and Numeracy Skills

Our Centre for Academic Writing and Numeracy Skills offers a free service providing students with help on specific study issues, such as reading for an essay, organising materials, preparing for exams, referencing, essay writing, mathematics and numeracy.



“This university offers good facilities allowing students to use various resources to do their work.”

Soichi Yosato, Japan

BA (Hons) Interactive Games Design



“I have gained really extensive knowledge of industry due to having such realistic and hands-on modules.”

Kate Fowler, United Kingdom

BA (Hons) Events Management

“The Students’ Union exists to add value to the *student experience*: through the Jobshop, volunteering, the student newspaper and radio station plus a diverse range of sports and societies.”

Linda Farrall Acting Chief Executive, University of Gloucestershire Students’ Union





“Cheltenham is a magical area with good shopping facilities and places to go out socially. The city of Gloucester is just a bus journey away and also has a good vibe.”

Amelia Dunning, United Kingdom
BA (Hons) Fine Art, Painting and Drawing

Studying at Gloucestershire will be a once in a lifetime opportunity. You will meet new people, try new things and explore a new country. We want you to look back and know that your time with us was one of the greatest things you ever did.

Gloucestershire has a vibrant and exciting social scene. Cheltenham is famed for hosting festivals of national and international standing. These festivals attract hundreds of thousands of people from around the world every year. There are music festivals for every genre, sporting festivals and food festivals, in addition to the world's longest running International Literature Festival.

Cheltenham and Gloucester both offer lots of choice for entertainment, including cinemas, restaurants, great shopping and a host of night-life opportunities.

Gloucestershire is a beautiful county and the opportunities for outdoor activities are immense. Whether you're interested in hiking, mountain biking or rafting there is plenty of choice just a short bus ride away.



Students' Union

The Students' Union (SU) is a platform for students to enjoy themselves and be creative. This is a hub for most things that go on at the university outside of study.

All students at the University of Gloucestershire automatically become a member of the SU. The SU plays a vital role in university life, providing a wide range of services and development opportunities for all students.

To allow students to relax and socialise with each other, the SU has a cafe bar at all of the university campuses. The cafe bars are relaxed environments during the day and, in the evenings, show sporting fixtures on the big screens, hold parties and balls, host comedy nights and much more.

Clubs and Societies

Our Students' Union is home to more than 100 clubs and societies, from athletics to lacrosse, psychology to rock, our students are spoiled for choice. As members of British Universities and

Colleges Sport (BUCS) our students regularly compete against other institutions. We give a warm welcome to all abilities, it does not matter whether you are a serious athlete or just want light exercise, the SU has a 'sport for all' ethos.

International Student Society

The International Student Society exists to welcome international students, help new members feel at home and to organise events in and around Gloucestershire.

Student Voice

The SU is the student voice on campus. Broadcasting 24 hours a day, Tone Radio is just one of the ways students can develop their skills and make new friends. Students can present or produce their own shows from our studios and with so many festivals held in Cheltenham every year our students also have a wealth of subject matter for outside broadcasts.

The university's monthly newspaper Space is produced through the SU by students and is distributed around each campus to all students.

Representation and Student Governance

The SU is a democratically run organisation which works closely with the university. The SU has the sole purpose of serving and representing students of the university, and is ultimately responsible to its members through an Annual General Meeting. The three elected sabbatical officers oversee the running of the SU, as well as performing specific duties.

To find out more, visit
www.yourstudentsunion.com



“As an international student, life is so different from home for me, and I seize every opportunity to take part in activities and do volunteer work.”

Xiayu Ling, China
MBA Business Administration



“The Students' Union brings diversity and life to the university, providing students entertainment and events on a regular basis.”

Shaaf Tauqueer, Pakistan
MSc Marketing Management



International Student Events

International students are encouraged to participate in one of the many international student events arranged by the International Development Centre (IDeC) throughout the year.

Visits in the past have included:

- Stonehenge
- Bath
- Birmingham
- Bristol
- Liverpool
- London
- Oxford
- Stratford-Upon-Avon
- Black Country Living Museum
- Wookey Hole Caves
- Cheddar Gorge

As well as these visits, IDeC also arranges film showings, games nights and social events.



www.facebook.com/Uniofglosint

Faiths and Chaplaincy Team

With our foundations in Christian values we welcome students of all faiths. Our Faiths and Chaplaincy team, together with Spiritual Companions, offer support for students and staff with contacts from the Buddhist, Hindu, Jewish, Muslim and Sikh communities.

www.glos.ac.uk/chaplaincy



“The University of Gloucestershire is known for its attractive *location* in the regency town of Cheltenham Spa and the historic city of Gloucester, surrounded by the beauty and unique charm of the Cotswolds.”

Dr Shelley Saguaro *Head of Humanities*





Conveniently located within an hour of some of Britain's largest cities, and just two hours from London, the University of Gloucestershire is ideally located to be your UK base while you study.

The University of Gloucestershire is a campus university located in the county of Gloucestershire in the South West of England. The university is located in an area known as the Cotswolds, a region famous for its outstanding natural beauty.

Cheltenham is a town famous for its historic regency architecture and is home to our Francis Close Hall and Park campuses. Just six miles away is Gloucester, home to our Oxstalls campus, and a city with a rich Roman, Medieval and Victorian history.

Their compact centres make it easy for students to walk or cycle and the university operates a bus service for students, linking the campuses, town centres and railway station.

One of Gloucestershire's assets is its location between many of the UK's economic centres. Excellent rail and road links mean that Birmingham, Cardiff and Bristol can be reached in under an hour. London is just two hours away and Manchester can be reached by train in two and a half hours.

The University of Gloucestershire is also close to the historic cities of Bath, Stratford-Upon-Avon and Oxford making it easy to get the most out of your time with us.



“Cheltenham is a quiet, safe and student-friendly place, which is very attractive for international students. Also, it is very convenient for getting to other big cities.”

Zhang Xin, China

BA (Hons) Accounting & Financial Management and Business Information Technology

“Take advantage of the wealth of opportunities offered by university life at Gloucestershire to develop your *employability* and acquire the experience and skills which graduate employers prize.”

Nicki Castello *Head of Careers and Employability*



Whether you are thinking about your long term career opportunities or simply trying to find a part-time job, the university is here to help.

The Careers and Employability team is here to help you find out about career options open to you once you have completed your degree with us. The team also gives guidance on how to develop your employability while at university, to help ensure that you graduate with the blend of knowledge, skills, attributes and experience that employers are seeking.

The team can provide you with information and advice on producing high-quality, competitive job applications. Making use of the guidance and support available from our qualified and experienced team of careers consultants and information professionals will help you manage your career into the future.

“The work placement is good preparation for life after university. It is also a great way to get a new perspective and come back to your final year with a refreshed approach.”

Andrew Fleck, United Kingdom
BA (Hons) Business Management and Marketing
Management and Branding



Employers value graduates who have gained the skills, attributes and experience during their degree studies that make them highly employable. The University of Gloucestershire places particular emphasis on giving all its students a wide range of opportunities to develop their employability. Such opportunities may be based in extra-curricular activities, as well as the academic programme.

They may involve:

- Work experience and placements
- Simulation exercises or visits by employers
- Volunteering or enterprise activities
- Mock application process and CV writing

Careers support can be accessed in a variety of ways. The team contributes regularly to lecture programmes and runs group workshops on specific topics. We also provide one-to-one career guidance and advice - by email or telephone, as well as in person at each campus. The website has more help available through the 'Destinations' section - a web-based programme of information and exercises on career learning.

The Careers and Employability team offers you flexibility and choice, so that you will easily be able to access up-to-date and relevant career information and guidance, both during and after your studies. This is all part of the University of Gloucestershire's active commitment to helping its graduates make a smooth and successful transition into the world of work.

“Making use of the facilities and support available to you is really important; the careers advisors on campus are extremely valuable and will help you think through the options available.”

Faye Sisymua, United Kingdom
PhD Student





Work Placements and Internships

Many of our undergraduate courses include a one year work placement (sometimes known as a sandwich course) through the Degree+ programme as well as short-term placements incorporated into the normal academic year. These real-world experiences underpin the academic knowledge that students are gaining through their degree study. Degree+ placements are on a paid basis and international students are able to participate on a student visa.

The university also operates an internship programme called Graduate Challenge which offers four-month paid placements to our graduates. As well as the university's own programme, our careers service can also provide you with information on national and employer-based internship schemes.

Working While You Study

Many students work part-time while they study to help make life more comfortable. This is a great way to gain valuable work experience alongside your degree studies and meet new people.

The majority of international students at Gloucestershire are able to work for up to 20 hours per week. Students are currently working in a variety of areas from small cafes to large insurance companies.

The SU operates a Job Shop that advertises part-time work in the local area for our students. Most students find obtaining a part-time job relatively easy in Cheltenham.

For more information about part-time job opportunities please visit:

www.yourstudentsunion.com/jobshop



A graduate in Marketing Management and Media Communications, Pia entered the University's BUG programme for budding entrepreneurs and won. This gave Pia the push she needed to open the Vanilla Pod bakery.

Pia Cato, United Kingdom

BA (Hons) Marketing Management with Media Communications

“ We’ve found that international students really enhance their experience with us by attending *International Welcome Week*. Students can prepare for their studies whilst meeting new friends.”

Siobhan Williams Assistant International Student Advisor



With an active social calendar and a full schedule of orientation sessions the International Welcome Week is the best way to start life as a Gloucestershire student.

As an international student, you will need to know lots of information about living in the UK. At the Welcome Week you will have easy access to this information and will have the opportunity to get the necessary things done and out of the way before you start your course. There is also plenty of time to get to know other international students during social events, parties and trips.

We find that students who attend the International Welcome Event settle into university life more quickly and can focus all their efforts into making their time here a success.

Our International Welcome Week includes:

Arrival and settling in

- Complimentary meet and greet at Heathrow airport
- House Hunting Event
- Opening a UK bank account
- Registering with a Doctor
- Police registration (if applicable)

Enrolment activities

- Course enrolment
- Visa and document check

Workshops

- Immigration
- Living and Learning in the UK
- Working in the UK
- Study Skills
- Understanding your accommodation contract
- Driving in the UK

Social events

- Welcome party
- Tour of Cheltenham
- Barn dance
- Excursion
- Traditional English supper
- Cinema evening



“It was easy to feel anxious and isolated before travelling to the UK, but attending the Welcome Week was a good opportunity to create confidence.”

Yu Zhao, China

BA (Hons) Accounting and Financial Management Studies



“All the activities gave me the opportunity to meet other international students which was enjoyable.”

Bernard Owusu-Appiah, Ghana

MSc Environmental Policy Management

“I would strongly recommend the Welcome Week programme to new students because it provides orientation and, most importantly, helps you to build good relationships with staff and fellow new students.”

Ayodeji Oyewale, Nigeria

MSc Accounting and Financial Management



“Welcome Week allowed me to adjust and get the hang of what to expect before classes started. I didn’t feel the pressure to settle or worry about matters because everything had been mapped out for me.”

Nadiah Mohammed Nazim, Malaysia

MSc Accounting and Financial Management



At Gloucestershire,
*supporting international
students* is important.

Coming to the UK for the first time can be daunting but the university has a large team of professional support staff to help you make the most of your time here.

- 1 ENGLISH LANGUAGE SUPPORT
- 2 INTERNATIONAL STUDENT SERVICES
- 3 STUDENT SERVICES
- 4 ACCOMMODATION
- 5 FINANCE AND SCHOLARSHIPS

“We are very proud of our British Council accredited *English language* courses and the *support* we offer to all our students to help them achieve their potential.”

Piers Wall Head of Cheltenham International Language Centre (CILC)



For non-native English language speakers our English Language Support service is there to help you make the most out of your degree studies.

English Language Support

The university offers in-sessional language support to international students in a number of different ways.

One to One Appointments

These are available during the academic year and are designed to help students develop their language awareness and writing skills. Students can bring pieces of writing they are working on, for a qualified tutor to look at and advise on how to improve in terms of language. The appointments can also be used to look at work which has been assessed, to discuss language improvements.

Taught Modules in English as a Foreign Language

A number of modules are available to help international students develop their skills in academic writing, reading, listening and presentations.

There are modules in:

- Report and Essay Writing
- Academic Writing
- English for Academic Purposes

These modules carry academic credit and are a core part of the Business 'studies route' courses.



“I found it difficult to speak in front of others, but by the end of the first module, I had grown more confident and was able to give my opinion and speak up in class.”

Irina Hefferman, Russia
MSc Hospitality Management



“Studying overseas can be very challenging, but we have a range of *international student services* to guide and support you from the moment you submit your application.”

Jacqueline Baines *Director of International Development*





From application to graduation, international students receive dedicated support from the International Development Centre (IDeC).

International Development Centre

Based at Park Campus, IDeC is here to help international students prior to and during their time at Gloucestershire.

International Recruitment Team

Our International Recruitment Team regularly visits countries around the world to meet prospective students. The team participates in a variety of activities including:

- Education exhibitions
- Partner institution visits
- Student interviews
- Presentations

The Recruitment Team work with a range of authorised representatives around the world, where students can receive advice about the university and assistance with our admissions procedures.

There are further details of our official agents on our website, together with procedures and entry requirements for specific countries.

International Admissions Team

Our International Admissions Team processes your application and helps you receive an appropriate offer. Our Admissions Team also ensure that you have the documents you need to secure your visa to study with us.



“The International Office made a lot of effort to make international students feel welcome.”

Tiffani Diggs, USA
GradDip Psychology

International Welfare Team

Our International Welfare Team can help you with a variety of issues relating to visas, police registration, life in the UK, resolving problems and other day-to-day matters once you are enrolled as a student.

The International Student Advisers also arrange our International Welcome Week at the start of the academic year, as well as regular events for international students throughout the rest of the year. These include excursions to local places, major tourist destinations, film evenings and other activities.

Find out more about IDeC at www.glos.ac.uk/international



“The university has also been very helpful about any queries I’ve had - especially the international office.”

Sneha Kadaba, India
MA Media and Creative Enterprise

“We want our students to really enjoy living and learning at the University of Gloucestershire. Our ***Student Services*** department offers a wide range of information, guidance and support to help make that happen.”

Stuart Dove *Head of Student Services*





The International Welfare Team works closely with Student Services to ensure that international students receive comprehensive and relevant advice.

Helpzones

Student Services has established a Student Helpzone on each campus where students can go to receive advice, support and assistance regarding any issues that they may be facing. Working closely with the International Development Centre, the Helpzone staff are available to answer your queries and find solutions to your problems.

Healthcare

We work closely with two local doctors practices which offer a student focused service. If you study in Cheltenham, you will be supported by a Medical Centre at the Park Campus, provided by one of our partner surgeries. If you are studying in Gloucester, we work with a doctor's surgery adjacent to our Oxstalls campus.

Counselling

The university has a team of qualified and experienced counsellors. The service they provide is free and confidential and can help you to gain focus on your situation. We offer counselling to all staff and students, and our Mental Health and Wellbeing Co-ordinator can provide guidance with any mental health concern.

Childcare

Student Services can help you source appropriate childcare via our knowledge of local providers. We work with local nurseries and are always happy to discuss any childcare issues with our prospective students.

For more information visit www.glos.ac.uk/student-services

“At the University of Gloucestershire we offer a fantastic range of affordable and accessible *accommodation* to suit all of our students.”

Nicola Gardner *International Accommodation Support Advisor*





Your accommodation will play a big part of your student experience whilst studying in the UK. We are pleased to offer tailored accommodation that meets the needs of our international students.

University Managed Housing

University housing is administered by the university's Accommodation Team. The university has different types of housing for undergraduate and postgraduate students reflecting the different needs these students may have.

As well as administering university housing, the accommodation team also runs a number of schemes including private housing, lodging and live-in housing with local families.

University Housing for Undergraduates

University halls of residence are a great place for undergraduates to live when they start university. They help you find your feet and meet new students in the same position.

All international undergraduates in their first year are guaranteed on-campus housing so long as they meet all of the necessary deadlines.

There are halls of residence on or near all three university campuses. All of the rooms are single occupancy study rooms and are equipped with; a bed, wardrobe, drawers, chair, desk and bookcase.

All halls of residence are self catered so we have fitted all kitchens and social areas with fridges, freezers, microwaves, cookers, toasters, kettles, cupboards and ironing boards. This should cover all the basic amenities you'll need to live comfortably in the UK.

“The postgraduate houses are fantastic university managed properties in an area thriving with students in the heart of Cheltenham.”

Richard Hewitt, International Officer



University Housing for Postgraduates

The university has a number of off-campus student houses exclusively for international postgraduate students. These houses are connected to our campuses by the university bus service but are also within walking distance of our Cheltenham campuses.

With a maximum occupancy of six students, these houses offer an environment more conducive to the needs of a postgraduate student. Each student has their own furnished room with bedding. University houses have a communal kitchen, bathroom and living room which includes kitchen utensils and a television.

Postgraduate housing is not guaranteed so international students are advised to apply as early as possible.

All students in university housing benefit from consolidated billing so the price you pay includes rent, furniture, taxes, water, gas, electricity and internet.

For more information visit

www.glos.ac.uk/accommodation



“The high points for me so far have been moving-in day and meeting all the new people in my halls.”

Katrina Godzicz, United Kingdom

BSc (Hons) Business Information Technology



Private Housing

Following the first year of study, international students are not guaranteed accommodation in university housing. However, we have our Accommodation Team on hand to help you find private accommodation in the local area.

Our Accommodation Team has a database of private properties registered with the university through our University Registration Scheme. All registered houses are inspected regularly by our Housing Team.

All registered properties are advertised on www.glosstudentpad.co.uk. You can obtain a password to access this list by contacting the housing team. housingsupport@glos.ac.uk.

Lodging

The Accommodation Office can also provide a list of study bedrooms available in houses where the owner lives in the same property. These lodgings offer a variety of flexible accommodation options with the choice of self-catering, evening meal or breakfast only. This accommodation also offers flexibility as there are no formal tenancy agreements. The Accommodation Office does not view these properties but asks for a copy of a valid landlord's gas certificate.

House Hunting Event (Welcome Week)

International students are strongly advised to arrange their accommodation before they arrive in the UK. However, we do run a House Hunting Event as part of International Welcome Week. During this event, students will be guided around the local area to view houses and speak to landlords.



“I found my own permanent accommodation in just three days and the university representative helped me a lot.”

Samruddhi Deshmukh, India
MSc Human Resource Management
(International)

International Accommodation Support Adviser
Nicola Gardner
ngardner@glos.ac.uk
www.glos.ac.uk/accommodation

“*Finance* is an important consideration for students when choosing a university. Gloucestershire has payment plans which are sympathetic to students’ financial commitments and we offer a range of bursaries *and scholarships* which help make overseas study possible.”

Camille Stallard *Director of Finance and Planning*



It is important to budget sensibly while you are a student to ensure that you have enough money to live on while you complete your studies.

International Tuition Fees

International tuition fees cover the cost of your study at the university and include charges for registration, tuition, supervision, examinations and graduation. Payment of fees will also entitle you to membership of the library and give you access to all of the support services on offer.

If you are a self-supporting student most courses allow you to pay your tuition fees in two 50% instalments at the start of each semester in September and January.

Students who are supported by their governments, employers or other sponsors should bring with them a letter from their sponsor, addressed to the university, confirming that the fees will be paid directly. Sponsors cannot pay by instalments.

Living and Travel Costs

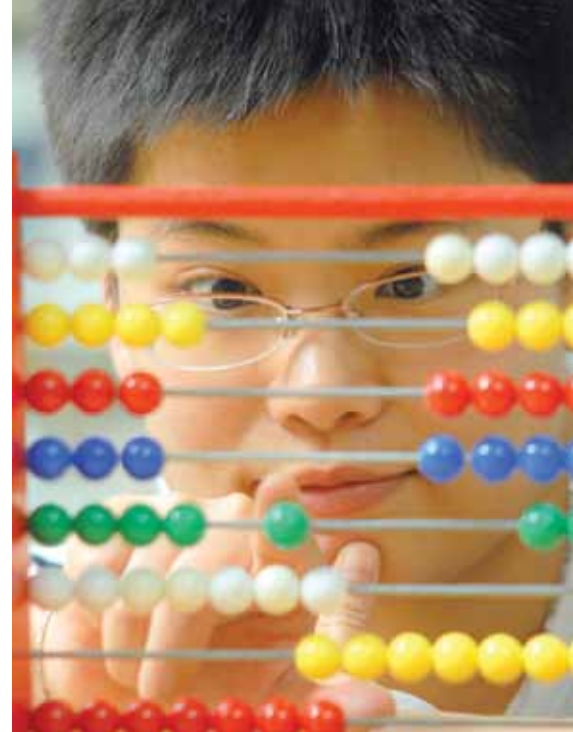
We typically recommend that you allow a minimum of £6,500 per academic year. The exact amount you require will depend on your lifestyle. You also need to budget for your air fares, travel insurance and immigration visa applications.

For a more detailed estimation of costs make use of the International Student Calculator tool at:

www.studentcalculator.org.uk.

For more information on international tuition fees and living costs please visit

www.glos.ac.uk/international



Scholarships

The university has a large scholarship programme recognising and rewarding academic excellence in our future students. These programmes are open to overseas fee payers of any nationality and are off-set against tuition fees.

International Merit Scholarship

Through the International Merit Scholarship programme the University of Gloucestershire is pleased to offer up to 30 awards of £2,000, £3,000 or £4,000 to academically excellent students. The awards are open to full time Bachelors and taught Masters students. You must hold an offer to study with us and then complete a scholarship application to be eligible for this award.

Postgraduate Academic Bursary

Through our Postgraduate Academic Bursary programme, awards of £1500 are available to all taught Masters applicants (MA / MSc / LLM / MBA) who have achieved the equivalent of a British second class upper in their Bachelors degree or equivalent.

Other Scholarships and Awards

The university also operates other scholarship programmes for current graduates and alumni continuing their study with Gloucestershire as well as a programme for family members. You should also check our website to see if there are faculty specific scholarships available. For athletes we offer small bursaries to enable students to continue their sport while at university.

On our website we also list a number of third party scholarship and funding programmes.

For more information on international scholarships visit www.glos.ac.uk/international



The *environment* you study in, the *expertise* of the lecturers and the *relevance* of the course should be your main deciding factors when choosing a university. At Gloucestershire, *we have it all.*

- 1 OUR BEAUTIFUL CAMPUSES
- 2 OUR ACADEMIC DEPARTMENTS AND RESEARCH CENTRES
- 3 THE TYPES OF DEGREE WE OFFER
- 4 OUR COURSES
- 5 HOW TO APPLY
- 6 OUR PARTNERS

“We are committed to supporting all aspects of our international students’ life at the university on all of our **campuses** - social, cultural and educational, so that we make your time with us very rewarding and enjoyable.”

Dr Kevin Richardson Dean, Faculty of Business, Education and Professional Studies





A former botanical garden located in the south of Cheltenham, Park Campus offers students an idyllic learning environment within a 15 minute walk of the town centre.

Environment

Park Campus started life as a botanical garden with plans to be converted into a zoo. The main path is known as Elephant Walk and it is said that the lake is the shape of Africa. Today, Park Campus offers its 3,000 strong student body an idyllic learning environment in the south of Cheltenham.

Facilities

- 24 acres of landscaped grounds and gardens
- Refectory open every day during term time
- Launderette
- Playing fields and tennis courts
- Students' Union offices and bar
- JobShop
- Medical Centre

- Student Helpzone
- Specialist computing laboratories
- Well-equipped teaching rooms
- Learning Centre providing a vast range of paper-based and on line resources
- 5 modern halls of residence with en-suite accommodation (with more halls just a 10 minute walk away)
- Broadband Internet access in bedrooms, Wi-Fi across campus.
- Excellent work based learning team providing interesting, relevant and paid work placement opportunities with organisations.



“I saw Park and FCH campus and thought they were both stunning.”

Charlotte Laver, United Kingdom
BSc (Hons) Biology



Continuous investment since 1847 means Francis Close Hall offers students modern facilities in an old world learning environment right in the centre of Cheltenham.

Environment

Francis Close Hall (FCH) is the university campus nearest to Cheltenham's town centre, being just a short walk away from shops, community cafes and restaurants.

FCH was purpose built for the Cheltenham Training College, a teacher training institution that was the forerunner to the university's Institute of Education and Public Services. The campus is beautifully maintained and has also been expanded over the years.

Facilities

- State-of-the-art laboratories
- ICT and design studios
- Student Helpzone
- Extensive IT and library facilities
- Teaching gardens and plant collections
- Halls of Residence
- Chapel
- Student Union Bar
- Refectory
- Sports centre nearby
- Community Garden



“I love the look and feel of Cheltenham and the Francis Close Hall is so pretty.”

Gemma Walker, South Africa
BA (Hons) Education Studies



Purpose built to support elite sports education Oxstalls is our award-winning 21st century campus.

Environment

Oxstalls campus is located in Gloucester and is only a five minute drive from the city centre. The campus opened in 2002 and has quickly gained a reputation for its friendly and sociable atmosphere where students and staff mix together.

Facilities

- Sports hall with balcony and adjoining teaching facilities.
- Astroturf floor has inbuilt shock pads to help prevent overuse injuries
- Students' Union cafe bar onsite
- Student Helpzone
- Learning Centre with over 200 flat-screen PCs
- Laboratory facilities for physiology, biochemistry and biomechanics

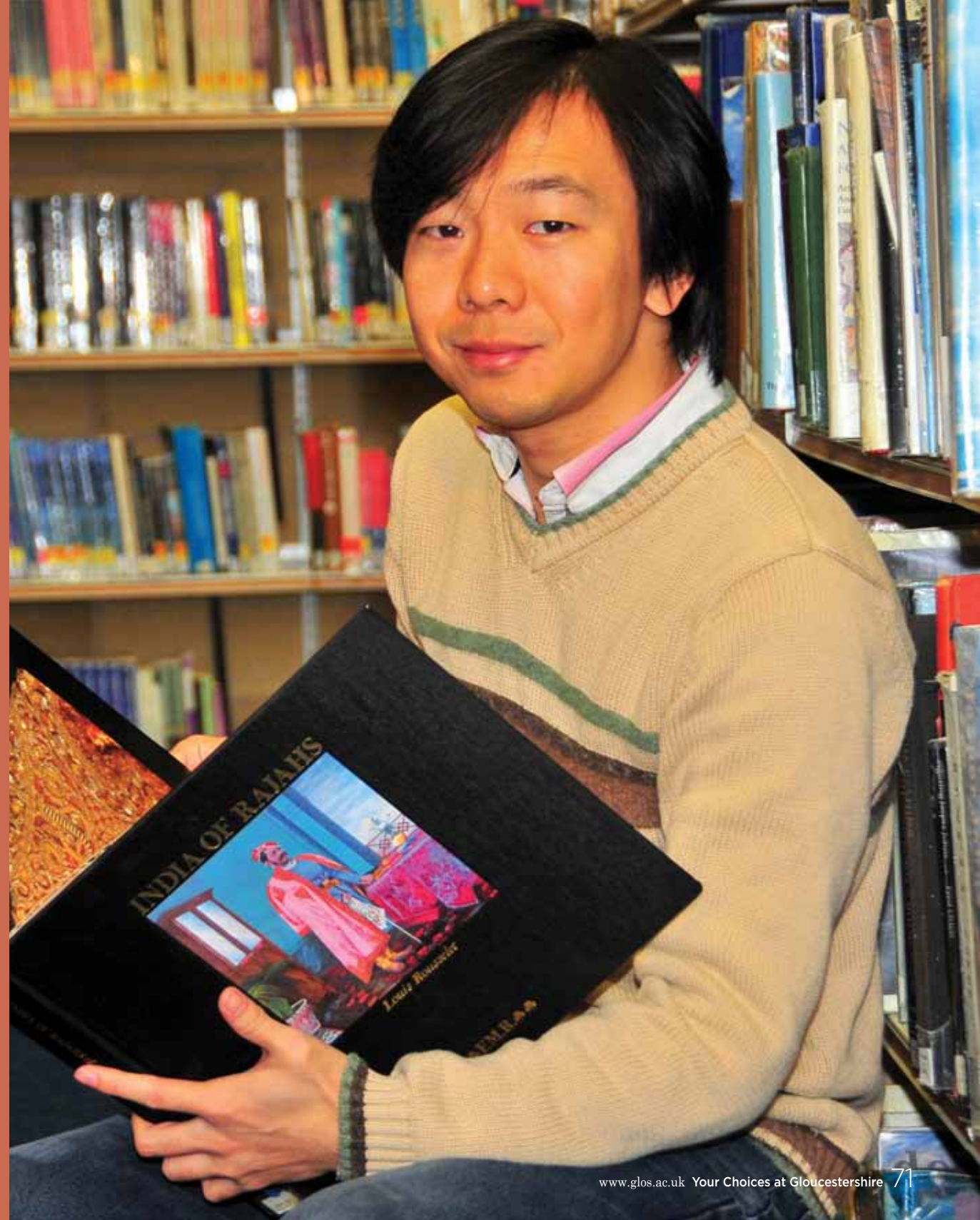
- On campus accommodation, all ensuite with telephone and broadband access
- Competition-standard cricket facilities which have become the home of the Gloucestershire County Cricket youth club academy
- New aerobic & resistance fitness suite with accompanying dance studio
- Cardiac and Respiratory Rehabilitation Unit

“Oxstalls in particular has great facilities available to the students from the fitness suite and strength and conditioning room.”

James Lloyd, United Kingdom
BSc (Hons) Biology

“Whichever course you choose at Gloucestershire, our *academic departments and research centres* are committed to providing the highest standards in academic quality.”

Dr Neil Casey *Dean of Quality and Standards*





FACULTY OF APPLIED SCIENCES

Department of Events, Leisure, Tourism and Hospitality

The department is one of the largest in the UK which specialises in management education for the events, leisure, tourism and hospitality industries. The emphasis here is on applied management skills, and about what it means to be a manager in these dynamic and global business sectors.

The courses have a clear focus on personal and career development in addition to subject knowledge, and include work placements, opportunities to run events and to undertake live consultancy projects.

The staff have a wealth of industry experience and are approachable and proactive, all of which delivers real benefits to our students and results in a 91% overall student satisfaction rating and one of the highest graduate employability rates in the UK (Unistats 2009).

Department of Sport and Exercise

The Department of Sport and Exercise is one of the largest providers of sport and exercise programmes in the UK and has an excellent reputation for teaching and research.

The department is based at the award-winning purpose-built Oxstalls Campus which provides sports facilities, specialised laboratories and technology-rich teaching and learning spaces. The department provides undergraduate, postgraduate and research student opportunities. The student experience is the top priority, reflecting the university's commitment to active learning, to ensuring that students are fully engaged with their curriculum, building skills for employability and lifelong learning. The student experience is underpinned by the department's internationally recognised research.

Department of Natural & Social Sciences

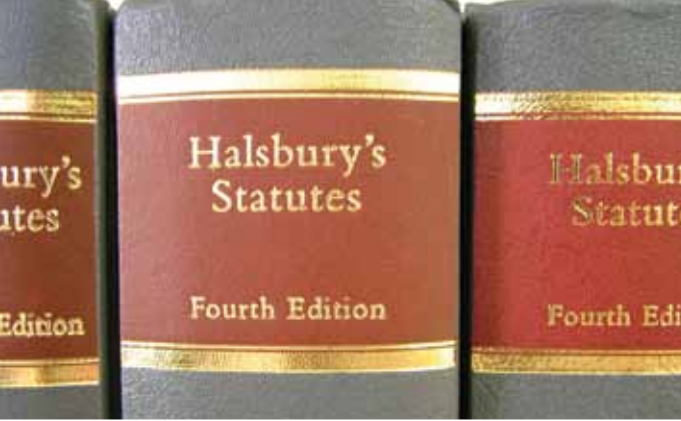
The Department of Natural and Social Sciences is located at Francis Close Hall Campus in Cheltenham, which is home to its state of the art laboratory and teaching and learning facilities.

The department has a strong reputation for the quality of its teaching and student support. Four members of departmental staff currently hold National Teaching Fellowships. The department's work is currently organised around two subject groups, Biological and Behavioural Sciences and Social and Policy Sciences.

Biological and Behavioural Sciences includes taught programmes in biology, counselling and psychology.

The Social and Policy Sciences group's undergraduate portfolio encompasses community engagement and governance, criminology, geography and sociology and environmental policy.

The department is committed to research-informed teaching, and is currently associated with four university research centres. There are currently three professors and three readers within the department, which recorded work of international and national excellence in geography, environmental studies and psychology in the 2008 Research Assessment Exercise.



FACULTY OF BUSINESS, EDUCATION AND PROFESSIONAL STUDIES

Department of Accounting and Law

Forging strong links with professional bodies and the business community, courses run by the Department of Accounting and Law are designed to give you the skills you need for the working world.

Underpinned by our active research community, we offer academically rigorous courses across all levels. We have a strong vocational focus and offer a variety of guest speakers and opportunities for work placements to help you gain vital 'real world' experience.

Our staff members have both an academic background and extensive experience in practice or business and are approachable and supportive, creating an excellent student experience.

Department of Business and Management

We are proud to be one of the leading providers of business degrees with a professional basis in the UK. The Department of Business and Management has an innovative portfolio of business, human resource management and marketing programmes.

The department has an excellent reputation for the employability of its graduates providing internationally relevant and professionally accredited programmes that are committed to sustainable management.

All of the programmes offered by the department are underpinned by its active research community. We provide class sizes where you'll be able to get to know your fellow students and will ensure you are taught by our key staff. We consider this to be the best way to help you succeed.

Institute of Education and Public Services

The Institute of Education and Public Services was formed to deliver excellence in teaching to aspiring education and public services professionals.

We offer courses in education and teacher training as well as advanced degree options for experienced education professionals with expertise covering early years, primary and secondary education. Our programmes have constantly evolved during our long and proud tradition of teaching education dating back to 1847. During your studies you'll have the chance to gain hands on experience in multiple schools thanks to strong partnerships with more than 250 primary schools and 50 secondary schools.

Our courses in health, community and social care will enable you to secure employment in such areas and will begin the process of equipping you for positions of leadership in roles that span both healthcare and social care. The programmes have been developed in close and continuing partnership with employers to ensure their currency, fitness for purpose and your employability.





FACULTY OF MEDIA, ARTS AND TECHNOLOGY

Department of Art & Design

Our courses and staff bring out the best in students developing their practice based skills, critical thinking and equipping them for employment. Our students evolve as creative individuals and analytical practitioners with strong communication and transferable skills.

Students from our graphic design and advertising courses are recognised as being amongst the most acclaimed in the prestigious international student awards hosted by British Design & Art Direction (D&AD).

Our illustration students have their own publishing strand, Pittville Press, showing at the London Book Fair and at Angouleme, France. The Cheltenham Illustration Awards are now well established as an annual international exhibition and symposium.

Photography: Editorial and Advertising received 100% for student satisfaction in the 2010 National Student Survey. Photojournalism and Documentary Photography received a high 94%.

Fine Art - Painting and Drawing, taught in Cheltenham for over 170 years, remains the important link to the rich origins of our visual arts courses. It continues to evolve as a course embracing traditional and new mediums for contemporary practice.

Our courses in Landscape Architecture were the first to be accredited by the UK Landscape Institute and Gloucestershire retains a strong reputation for excellence in the subject.

Whichever subject area students are passionate about they have the knowledge that their staff feel the same and will help them generate and develop ideas to produce stunning work.

Department of Communications & Media Production

Our course teams work closely with the media industry locally and nationally to provide the best possible start for budding TV, film, radio, music, multi-media and journalism professionals.

The university has been awarded Skillset Media Academy status in recognition of our excellence in this area.

While our courses are firmly grounded in theory and set in the rapidly moving context of the media industry, they provide real opportunities for our students to experience the workplace. You will work on 'live' briefs and begin to build up the contacts that will help you make it in this competitive world.

Radio, popular music and television production students provide broadcasts and live video streaming for Cheltenham Festivals, local sports clubs and music events. Digital Film Production students every year win prestigious prizes and have their work screened at the UK's top

festivals. Through Tone Radio and Tone TV students have an opportunity to explore their own ideas and create their own programmes and through our Collaborative Module they can work with those on other courses.

The department's work is brought together at the end of each year in a series of Oscar-style ceremonies to award the best of the year's talent.



Department of Computing

The Department of Computing works closely with local industry and government institutions to ensure we are able to provide courses that are relevant in the real world today. Students have many opportunities to work on 'live' projects for external clients during their studies.

The degrees we offer range from highly technical computing degrees; to the creative design and technology programmes and

the business facing Information Technology programmes.

All these degrees require students to develop high levels of technical skills, which can be hard work, but will also be very rewarding.

Whatever the choice of degree, students will develop excellent broad-base technical and problem-solving skills that will stand them in good stead in any future career.

Department of Humanities

The Department of Humanities takes pride in delivering a range of stimulating, engaging and topical courses across all its subject areas.

Our aim is to provide an education in the humanities that has traditional breadth and depth, but also recognises the contribution of our subject areas to cultural development, active citizenship, regional and local identities, and national and international economies.

Based at the attractive Francis Close Hall Campus, the Department of Humanities has the use of a technology-efficient Learning Centre, class-room based audio-visual/IT systems and a dedicated e-learning hub.

The department also offers a range of traditional resources and approaches which, combined with the latest technology to support student learning and assessment, provides courses which are up-to-date and distinctive.

Our staff-members are dedicated tutors and highly qualified researchers, with national and international reputations. The Department benefits from local events such as the Cheltenham Literature Festival, and the proximity of Stratford-upon-Avon, Oxford and other cultural centres contributes to the dynamic atmosphere of debate and discussion.



We're passionate about building a brighter future for our university community, and putting research at the heart of it. We're constantly developing new methods of research, along with new research centres, giving staff and students the opportunity to take their specialisms further.

The University of Gloucestershire has a vibrant academic community where creative research and scholarship are conducted at a high level.

Our learning-led environment enables research to thrive across and between academic disciplines, providing the best support for postgraduate and also undergraduate students.

We offer a range of postgraduate opportunities across 24 subject areas where you can work on your individual research topic alongside experienced researchers and supervisors.

In addition to full training in research methods, the university also provides a training programme for research students who wish to pursue a teaching career in higher education.

Research Centres and Institutes

In addition to our academic departments (see pages 70-77) students can engage in research through our research centres and institutes.

- Countryside and Community Research Institute
- International Research Institute in Sustainability
- Centre for Research, Consumption, Culture and Communication
- Pedagogic Research and Scholarship Institute
- Centre for Sport, Spirituality and Religion
- Centre for the Study of Crime, Violence and Disorder

For a full list of research areas see page 89.

Postgraduate Research Centre

Based at The Park, the Postgraduate Research Centre offers advice and oversees all of the university's procedures relating to the support and supervision of research students.

Postgraduate Research Centre
University of Gloucestershire
Park Campus
Cheltenham
GL50 2RH
United Kingdom

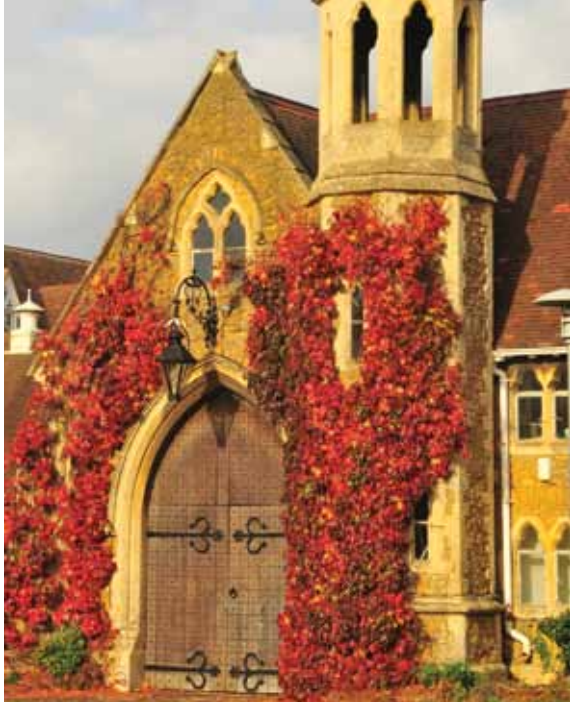
research@glos.ac.uk
+44 1242 71 4157/5367

For more information on research at Gloucestershire please visit **www.glos.ac.uk/research**

“With so many *types of* student it is important that we offer flexible *degree* courses that meet our students’ needs.”

David Dawson *Head of Department, Business and Management*





Find the right type of degree for you using our guide below. With a broad range of undergraduate and postgraduate courses, taught and research degrees, we're bound to have one that is right for you.

Bachelors Degree

Awards: BA/BSc/LLB (Hons)
Duration: Three years

Our traditional Bachelor degrees enable you to develop your subject expertise, fulfil your intellectual potential and prepare you for professional employment. As all of our degrees are honours programmes, students benefit from tutorial and seminar teaching as well as lectures and you are expected to undertake significant pieces of research as part of your programme.

Bachelors Degree (Degree+)

Awards: BA/BSc (Hons)
Duration: Four years

Many of our vocationally orientated programmes enable students to incorporate a year of relevant paid or voluntary work into their degree programme.

Bachelors Degree (Fast track)

Awards: BA/LLB (Hons)
Duration: Two years

Ideal for mature students or students wishing to convert to a new subject, the fast track programmes enable students to condense their programme by studying throughout the vacation periods to gain a Bachelors degree in just two years.

Bachelors Degree (Final Year entry)

Awards: BA/BSc (Hons)
Duration: One year

These courses are suitable for students who already hold a recognised diploma and want to raise their education to the Bachelors level.

Graduate Diploma

Awards: GradDip
Duration: One year

Our Graduate Diplomas are Bachelors level awards for graduates looking to 'convert' into a new profession without having to do a second Bachelors degree.

Masters Degree

Awards: MA/MSc/MBA/LLM
Duration: 12 months

Our Masters programmes are advanced degrees with intensive curricula. Students follow taught modules for the first two semesters followed by a dissertation.

Masters Degree (dissertation stage)

Awards: MA/MSc/MBA
Duration: 5 months

These courses are suitable for students who hold a recognised Postgraduate Diploma and want to raise their education to the Masters level.

Masters by Research

Awards: MA/MSc by Research
Duration: One year

Students can study an MA/MSc by Research in any of the university's 24 research areas. Students are supported by two research methods modules and expert supervision provided by the university.

Masters of Research

Awards: MRes
Duration: One year

An ideal preparation for a career in research, the MRes includes a strong taught element in multidisciplinary research methods as well as enabling subject-specific knowledge to be developed through the university's expert supervision.

Masters of Philosophy

Awards: MPhil
Duration: 18 months

Students engage in original research through this intermediate level Masters in one of the university's 24 research areas. Students often transfer from the MPhil to the PhD.

Doctor of Philosophy

Awards: PhD
Duration: Three years

The PhD allows you to conduct an extensive and original research project under expert supervision. This is the highest degree offered and allows you to gain expertise in your subject.

Professional Doctorate

Awards: DBA/EdD
Duration: Three years

Professional doctorates offer a more structured learning environment incorporating both taught and research elements. The purpose of the professional doctorate is to enable students to make a contribution to knowledge, and to significantly develop their organisation.



“Working closely with business and the professions to develop students with applied skills and knowledge is a key feature of many of our *courses.*”

Michael Cogger *Faculty Dean of Applied Sciences*



Our course finder pages list all of the courses available to international students at the University of Gloucestershire. You can find out more about each course online at www.glos.ac.uk/courses.

For information on Degree+ see page 28

UNDERGRADUATE COURSES		DURATION	CAMPUS
BA (Hons)	Accounting and Financial Management	3/4 yrs Degree+	Park
BA (Hons)	Accounting and Financial Management Studies	3 years	Park
BA (Hons)	Advertising	3 years	FCH
BSc (Hons)	Animal Biology	3 years	FCH
BA (Hons)	Applied Computing [Final Year Entry]	1 year	Park
BA (Hons)	Applied Health Studies	3 years	Park
BSc (Hons)	Applied Sport and Exercise Studies [Final Year Entry]	1 year	Oxstalls
BA (Hons)	Theology [Final Year Entry]	1 year	FCH
BSc (Hons)	Biology	3 years	FCH
BA (Hons)	Business and Management Studies	3 years	Park
BA (Hons)	Business Information Technology	3/4 yrs Degree+	Park
BA (Hons)	Business Management	3/4 yrs Degree+	Park
BA (Hons)	Business Management (Economics)	3/4 yrs Degree+	Park
BA (Hons)	Business Management (Enterprise)	3/4 yrs Degree+	Park
BA (Hons)	Business Management (Human Resource Management)	3/4 yrs Degree+	Park
BA (Hons)	Business Management (International Business)	3/4 yrs Degree+	Park
BA (Hons)	Business Management and Strategy [Final Year Entry]	1 year	Park
BA (Hons)	Creative Media	3 years	Park
BA (Hons)	Creative Writing	3 years	FCH
BSc (Hons)	Criminology	3 years	FCH
BSc (Hons)	Computing	3/4 yrs Degree+	Park
BA (Hons)	Digital Film Production	3 years	Park
BA (Hons)	Early Childhood Studies	3 years	FCH
BA (Hons)	Education Studies	3 years	FCH
BA (Hons)	English Language	3 years	FCH
BA (Hons)	English Literature	3 years	FCH
BA (Hons)	Events Management	4 yrs Degree+	Oxstalls
BA (Hons)	Film	3 years	Park
BA (Hons)	Fine Art	3 years	FCH
BA (Hons)	Fine Art - Photography	3 years	FCH
BSc (Hons)	Forensic Computing	3/4 yrs Degree+	Park
BSc (Hons)	Geography	3 years	FCH
BA (Hons)	Graphic Design	3 years	FCH
BA (Hons)	Health, Community and Social Care	3 years	Oxstalls
BA (Hons)	History	3 years	FCH
BA (Hons)	Hospitality Management	4 yrs Degree+	Oxstalls
BA (Hons)	Illustration	3 years	FCH

UNDERGRADUATE COURSES

		DURATION	CAMPUS
BSc (Hons)	Information and Communications Technology [Final Year Entry]	1 year	Park
BSc (Hons)	Information Technology	3/4 yrs Degree+	Park
BA (Hons)	Integrated Youth Practice	3 years	Oxstalls
BSc (Hons)	Interactive Games Design	3/4 yrs Degree+	Park
BA (Hons)	International Business Studies	3 years	Park
BA (Hons)	Journalism	3 years	Park
LLB (Hons)	Law	3 years	Park
LLB (Hons)	Law	2 Yrs Fast Track	Park
BA (Hons)	Landscape Architecture	3 years	FCH
BA (Hons)	Marketing Management and Branding	3/4 yrs Degree+	Park
BA (Hons)	Marketing Management Studies	3 years	Park
BA (Hons)	Marketing, Advertising and Communications	3/4 yrs Degree+	Park
BA (Hons)	Mass Communications [Final Year Entry]	1 year	Park
BA (Hons)	Media Production [Final Year Entry]	1 year	Park
BSc (Hons)	Multimedia Web Design	3/4 yrs Degree+	Park
BA (Hons)	Music and Media Management	3/4 yrs Degree+	Park
FD	Performing Arts	2 Years	Oxstalls
BA (Hons)	Performing Arts [Final Year Entry]	1 year	Oxstalls
BA (Hons)	Photography - Editorial and Advertising	3 years	Park
BA (Hons)	Photojournalism and Documentary Photography	3 years	Park
BA (Hons)	Playwork	3 years	Distance
BA (Hons)	Popular Music	3 years	Park
BSc (Hons)	Psychology	3 years	FCH
BA (Hons)	Radio Production	3 years	Park
BA (Hons)	Religion, Philosophy and Ethics	3 years	FCH
BA (Hons)	Sociology	3 years	FCH
BA (Hons)	Sport & Exercise Sciences	3 years	Oxstalls
BSc (Hons)	Sport Science	3 years	Oxstalls
BSc (Hons)	Sports Coaching	3 years	Oxstalls
BSc (Hons)	Sports Development	3 years	Oxstalls
BSc (Hons)	Sports Education	3 years	Oxstalls
BSc (Hons)	Sports Management	3 years	Oxstalls
BSc (Hons)	Sports Strength and Conditioning	3 years	Oxstalls
BA (Hons)	Sports Therapy	3 years	Oxstalls
BA (Hons)	Strategic Events Management [Final Year Entry]	1 year	Oxstalls
BA (Hons)	Strategic Hospitality Management [Final Year Entry]	1 year	Oxstalls
BA (Hons)	Strategic Leisure Management [Final Year Entry]	1 year	Oxstalls
BA (Hons)	Strategic Tourism Management [Final Year Entry]	1 year	Oxstalls
BA (Hons)	Television Production	3 years	Park
BA (Hons)	Theology	3 years	Distance
BA (Hons)	Tourism Management	4 years Degree+	Oxstalls
BA (Hons)	Visual Communication [Final Year Entry]	1 year	FCH

POSTGRADUATE TAUGHT COURSES		FACULTY	DURATION	CAMPUS
MSc	Accounting and Financial Management	BEPS	1 year	Park
MSc	Applied Sport and Exercise Sciences	AS	1 year	Oxstalls
MBA	Business Administration	BEPS	1 year	Park
MSc	Business Psychology	AS	1 year	FCH
MSc	Computing with e-Business Technology	MAT	1 year	Park
MSc	Computing with IT Management	MAT	1 year	Park
MSc	Computing with Software Engineering	MAT	1 year	Park
MSc	Computing with Systems Security Management	MAT	1 year	Park
MA	Creative and Critical Writing	MAT	1 year	FCH
MSc	Criminological Psychology	AS	1 year	FCH
MSc	European Rural Development	AS	1 year	Distance
MA	Film and Screen Enterprise	MAT	1 year	Park
MA	Fine Art	MAT	1 year	FCH
MSc	Forensic Psychology	AS	1 year	FCH
GradDip	Graduate Diploma In Psychology	AS	1 year	FCH
MBA	Hospitality Management	AS	1 year	Park
MA	Human Resource Management (International)	BEPS	1 year	Park
LLM	International Business Law	BEPS	1 year	Park
MA	Journalism	MAT	1 year	Park
MA	Landscape Architecture	MAT	1 year	FCH
MA	Landscape Architecture Conversion	MAT	2 years	FCH
MSc	Leadership and Management (Social Work)	BEPS	1 year	Oxstalls
MSc	Marketing Management	BEPS	1 year	Park
MA	Media and Creative Enterprise	MAT	1 year	Park
MSc	Occupational Psychology	AS	1 year	FCH
MA	Play and Playwork	AS	1 year	Distance
MSc	Sport and International Development	AS	1 year	Oxstalls
MSc	Sport Chaplaincy	AS	1 year	Oxstalls
MSc	Sport Ministry	AS	1 year	Oxstalls
MSc	Sports Coaching	AS	1 year	Oxstalls
MA	Sports Development	AS	1 year	Oxstalls
MSc	Sports Strength and Conditioning	AS	1 year	Oxstalls
MSc	Sports Therapy	AS	1 year	Oxstalls
GradDip	Theology	MAT	1 year	FCH
MA	Visual Communication	MAT	1 year	FCH

POSTGRADUATE RESEARCH AWARDS	COURSES
MA by Research/MRes/MPhil/PhD	Art and Design
MA by Research/MRes/MPhil/PhD	Accounting
MSc by Research/MRes/MPhil/PhD	Biological Sciences
MA/Sc by Research/MRes/MPhil/PhD	Business Management and Strategy
MA/Sc by Research/MRes/MPhil/PhD	Countryside and Community
MSc by Research/MRes/MPhil/PhD	Computing and IT
MA by Research/MRes/MPhil/PhD	Creative Writing
MA/Sc by Research/MRes/MPhil/PhD	Education
MA by Research/MRes/MPhil/PhD	English
MSc by Research/MRes/MPhil/PhD	Geography & Environmental Sciences
MSc by Research/MRes/MPhil/PhD	Health
MA by Research/MRes/MPhil/PhD	History
MA by Research/MRes/MPhil/PhD	Landscape
MA by Research/MRes/MPhil/PhD	Leisure and Tourism
MA by Research/MRes/MPhil/PhD	Law
MA by Research/MRes/MPhil/PhD	Media, Film and Communication Studies
MSc by Research/MRes/MPhil/PhD	Psychology and Behavioural Sciences
MA by Research/MRes/MPhil/PhD	Performing Arts
MA by Research/MRes/MPhil/PhD	Philosophy and Ethics
MA by Research/MRes/MPhil/PhD	Playwork
MSc by Research/MRes/MPhil/PhD	Sport and Exercise
MA/Sc by Research/MRes/MPhil/PhD	Social and Policy Sciences
MA/Sc by Research/MRes/MPhil/PhD	Sustainability
MA by Research/MRes/MPhil/PhD	Theology and Religious Studies

Course durations are typically as follows: MA/Sc by Research and MRes one year, MPhil two years and PhD three years.



“Our *English Language Courses* help students to move on to the next part of their life, be it to take an examination, or to prepare them for success in degree level study.”

Sandra De-Niro *Team Leader, Cheltenham International Language Centre*





English Language Courses

Cheltenham International Language Centre (CILC) is the University of Gloucestershire's own language centre and has been offering courses since the mid-1980s. CILC is a member of English UK and our courses are accredited by the British Council.

CILC offers a number of courses throughout the year to prepare students for undergraduate or postgraduate study. These courses are available for students who have an offer from the university to study for an undergraduate or postgraduate course, but who need to improve their English to meet the English language requirements.

The courses have been carefully developed to help you achieve success, with clear course assessments to show your progress and regular tutorials to give you personal support as you develop your language skills and level.

Pre-sessional Courses

Pre-sessional courses are for students with a B2 level of English (minimum IELTS 5.0 or equivalent in all skills). The courses consist of skills and language development, academic English, study skills and preparation for your undergraduate or postgraduate course. These courses lead directly to entry to the University of Gloucestershire courses.

English for Academic Study Course

Our English for Academic Study course is for students who have a level of English below B2 and who need to improve their language level by more than one IELTS point or equivalent. The course consists of General English, Academic English, Examination Skills development and Study Skills. You can join this course at different times of the year. This course can also be studied before a pre-sessional course.

For more information about these courses or about our other English language or teacher development courses please visit our website or contact us at:

Cheltenham International Language Centre
University of Gloucestershire
Cornerways
Park Campus
Cheltenham
GL50 2RH

Tel: +44 (0)1242 714092
Email: cilc@glos.ac.uk
Web: www.glos.ac.uk/cilc

“Our International Admissions Team will process your application, in addition to providing you with detailed information regarding *how to apply* for your course. We support you from application through to arrival.”

Tom Kidd *International Admissions Manager*





Once you make your application we will endeavour to process it as quickly as possible.

To make an application you need to submit the correct application form and supporting documents. Our team of recruitment and admissions officers can answer any questions you have about completing an application. We also have a global network of representatives who can support you in making your application from your home country.

Forms

Undergraduate applications are made through the Universities and Colleges Admissions Service (UCAS). This national application system is used by all UK universities and allows you to apply for up to five different courses/institutions on one form. The form can be found online at www.ucas.com.

Alternatively, undergraduate applicants can submit a paper based form direct to the university from one of our representative offices.

Postgraduate taught and research students apply directly to the university by downloading a paper based application form from www.glos.ac.uk. Taught applicants also have the option of using the online application system.

Documents to be included:

- Application form
- Full academic record (certificates and transcripts from senior high school onwards)
- Evidence of English language proficiency (eg IELTS/TOEFL)
- Personal statement
- One academic reference (two for postgraduate courses)
- Photocopy of passport (photo page)
- Portfolio (for creative courses)
- Research proposal (for postgraduate research courses)

Overseas Representatives

The university operates a global network of carefully selected overseas representatives. These organisations receive regular training and updates from the university and are authorised to support our applicants during the admission process. Our representatives are able to offer applicants a premium service including faster decision times, direct applications to all levels of study and visa application support.



Sally Mansell
Head of International Recruitment

Jacqueline Baines
Director of International Development

Tamsin Thomas
International Officer



Richard Hewitt
International Officer

Ming Knowles
International Officer

For more information for prospective international applicants please visit:

www.glos.ac.uk/international

Contact details for international applicants:

University of Gloucestershire, International Development Centre
Jones Building, Park Campus, Cheltenham, GL50 2RH, United Kingdom
Tel: **+44 1242 71 4300** Fax: **+44 1242 71 4200** Email: **intoffice@glos.ac.uk**

“The University of Gloucestershire is committed to providing more international students with access to our degrees through our global network of overseas *partners*.”

Dr Michael Pinfold *Head of Collaborative Provision*





Our network of overseas partners means many students can study a University of Gloucestershire degree without leaving home.

Whilst this brochure focuses on the courses available at our campuses in the UK, we recognise that some students may prefer to stay in their home country to study.


The university has strong international links and is proud to be in collaboration with several institutions around the world. Our network of partners is rapidly expanding and currently offers a range of undergraduate and postgraduate programmes in several parts of Africa, Asia and Europe.

The list of locations is growing so if you would like to check whether we offer our degrees in your country, please check the list of international partnerships on our website at www.glos.ac.uk/international.

The University of Gloucestershire is committed to maintaining the highest standards wherever you study and we apply the same criteria for quality as are required in the United Kingdom. So, whilst you may not benefit from the additional experience that comes with studying overseas, you are still guaranteed an excellent education.

If you are a potential partner and you would like to contact us about delivering our courses overseas, you can find out more about the types of partnerships available and the process for approval at www.glos.ac.uk/international.





• • • so you've read
our International Guide,
the big question is • • •
what next?

FIND OUT MORE

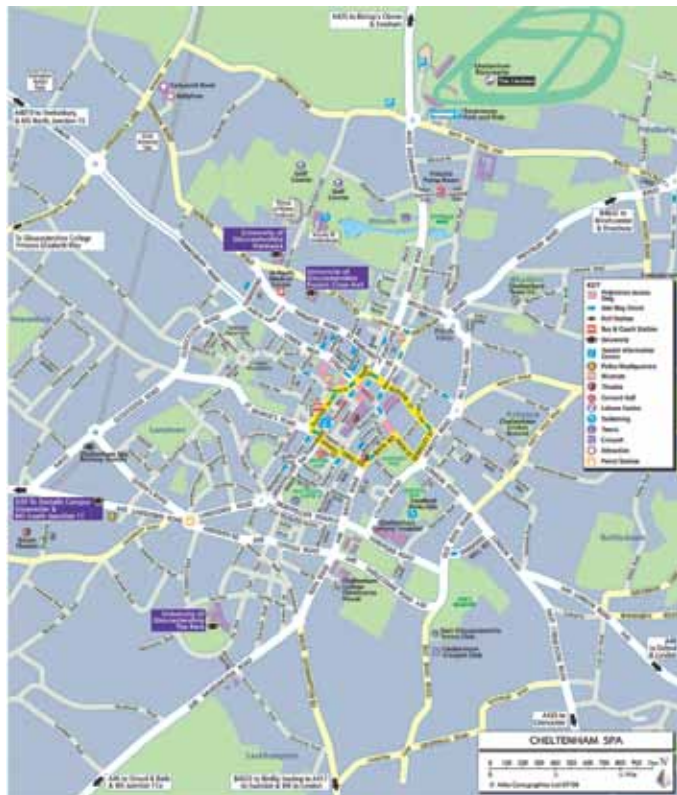
www.glos.ac.uk/international

www.facebook.com/uniofglosint

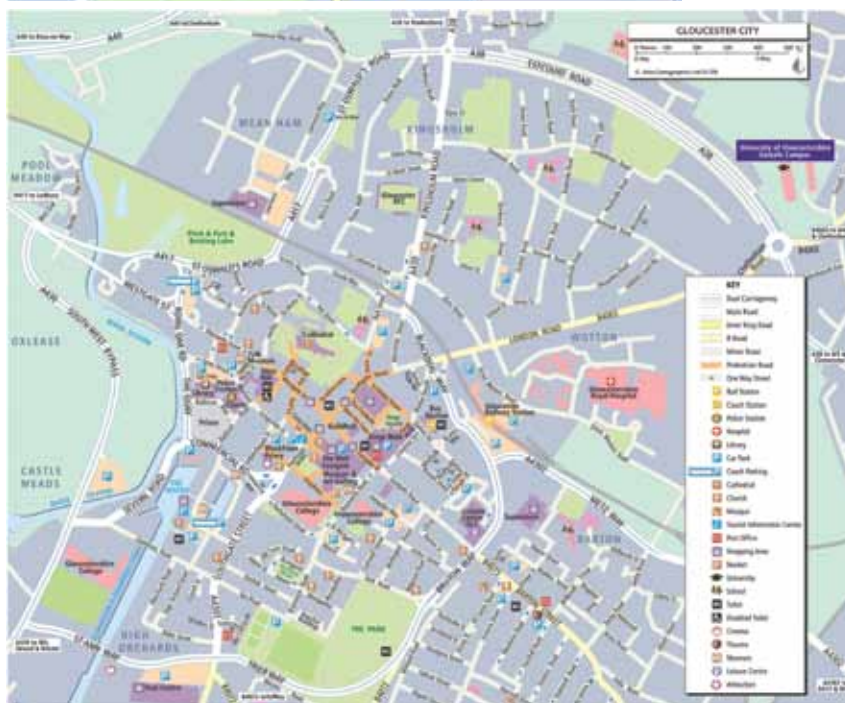
www.glos.ac.uk/uniview

www.glos.ac.uk/living/virtualtours

Cheltenham



Gloucester



Birmingham
50 miles 80 km 1 hr

Bristol
43 miles 69 km 45 mins

Edinburgh
336 miles 450 km 6 hrs

London
96 miles 154 km 2 hrs



www.glos.ac.uk/international
intoffice@glos.ac.uk

The university will take all reasonable steps to provide the educational services described in this guide. However, it does not guarantee the provision of such services and this guide does not form part of any contract between you and the university.

Contact: +44 1242 714300 www.glos.ac.uk

