



University of the  
Highlands and Islands  
Oilthigh na Gàidhealtachd  
agus nan Eilean

**2012/13**



# Postgraduate Prospectus Ro-Shealladh For-Cheum

# Contents

Welcome to your campus	2
Postgraduate study and research	4
International students	8
Gaelic at UHI	9
<b>Our courses</b>	
Arts, Humanities and Social Sciences	10
Education	20
Health and Wellbeing	24
Business and Management	30
Environmental and Rural Studies	38
Application and finance	44
Student support	46
Useful contacts and addresses	47
A-Z course listing	48





# Welcome to the University of the Highlands and Islands

**UHI gives you the chance to do something different; something special. Our network of colleges and research centres, spread across the Highlands and Islands of Scotland, offers you a natural, supportive environment for studying at postgraduate level and achieving your ambitions.**

# Welcome to your campus



**At the University of the Highlands and Islands (UHI) you choose your campus. You can study at one of our colleges or research centres spread across the Highlands and Islands of Scotland, or join our large body of students who create their own campus by studying online from home or work.**

As a postgraduate student at UHI you will benefit from exceptional support from your tutors and peers. Even if you are studying online, you won't be studying in isolation. We are experts in providing support to off-campus students, thanks to our distributed structure and innovative use of technologies, including: video conference, a virtual learning environment, online discussion groups, audio conference and Skype.

Some campuses have small communities of students and researchers all working on the same subject; for example, the Centre for Mountain Studies at Perth College UHI, and the Centre for Nordic Studies based at Orkney College UHI and Shetland College UHI. You can be part of such communities whether you are studying on-campus or online.



# Postgraduate study and research

'World-leading' archaeology research in Orkney



**At UHI you can study one of a growing number of taught postgraduate courses in some very specialist areas reflective of the unique environment, culture and heritage of the Highlands and Islands of Scotland.**

**These courses are often linked to academic research being carried out by our staff and students, and in the 2008 Research Assessment Exercise (RAE) certain elements of UHI research in Celtic studies, archaeology and earth systems science were recognised as “world-leading”.**

## **Research at UHI**

Research is undertaken across the UHI partnership at a number of specialist research centres that are associated either directly with UHI or with one of our academic partners.

UHI is developing a strong reputation in certain niche areas of research, many of which draw directly from, and give back to, the natural environment in which we are located.



Postgraduate students at SAMS UHI



'World-leading' earth systems science research



Our primary areas of research expertise include:

- Diabetes and cardiovascular science
- Agronomy
- History
- Sustainable rural and mountain development
- Archaeology
- Gaelic
- Theology
- Renewable energy and energy engineering
- Nordic studies
- Marine and environmental science



90% of the research carried out by the Scottish Association for Marine Science UHI in Oban was judged as 'internationally recognised' in the 2008 RAE.



# International students



**If you would like to study in a country of outstanding natural beauty, friendly communities, and cities buzzing with social life and activities, then the Highlands and Islands of Scotland should be your first choice.**

## **Entry requirements and application**

We make offers of entry based on qualifications achieved worldwide. Admission to our courses depends on a proven level of competence in English. If English is not your first language you will be required to provide a recent secure English language test certificate at IELTS level 6.5 or equivalent.

If you wish to improve your English before commencing your studies contact us at [international@uhi.ac.uk](mailto:international@uhi.ac.uk). UHI postgraduate courses that are taught wholly online can only be studied from your home country.

## **Support and advice**

Our dedicated staff at our award-winning International Centre or individual colleges are here to guide you through the application process and support you with information and advice on visa, accommodation and other issues.

Accommodation is often a key issue for overseas students. Most of our international students stay in self-catering accommodation or are placed with host families. Some of our colleges have modern, purpose-built student accommodation. The UHI colleges can assist with obtaining suitable accommodation.

## **Study abroad**

If you are an international student enrolled at an institution overseas you may want to get a taste of studying abroad. A year or a semester at UHI can be a great way of gaining first-hand experience of Scotland and Scottish culture.

## **Contact**

You will find lots of useful information on the international section of our website [www.uhi.ac.uk/international](http://www.uhi.ac.uk/international) or you can contact us at [international@uhi.ac.uk](mailto:international@uhi.ac.uk).

# Gàidhlig aig UHI

## Gaelic at UHI



Mar oileanach aig Oilthigh na Gàidhealtachd agus nan Eilean, bidh cothrom air leth agad Gàidhlig ionnsachadh agus cùrsaichean tro mheadhan na Gàidhlig a dhèanamh ann an sgìrean far a bheil a' chànan na fìor phàirt bheothail den choimhearsnachd ionadail. Tha cùrsaichean rim faotainn tro Cholaisde a' Chaisteil UHI, aig a h-àrainnean air feadh nan Eilean Siar, agus aig Sabhal Mòr Ostaig UHI anns an Eilean Sgitheanach; far an urrainn dhut do bhogadh fhèin anns a' chànan.

Tha sinn cuideachd mothachail nach eil a h-uile oileanach againn aig a bheil Gàidhlig a' dèanamh cùrsa a tha ceangailte ris a' Ghàidhlig, ach gu bheil iad fhathast airson conaltradh ris an oilthigh sa Ghàidhlig. Chaidh ar ciad Phlana Gàidhlig aontachadh ann an 2010, agus e a' leigeil fhaicinn mar a tha e san amharc againn cur ris an ìre a chithear agus a chluinnear a' Ghaidhlig san t-seirbheis a bhios sinn a' toirt seachad do dh'oileanaich. Tha tòrr de na foillseachaidhean agus na seirbheisean againn rim faotainn san dà chànan, agus tha sinn daonnan a' togail air seo.

As a student of the University of the Highlands and Islands, you'll have a unique opportunity to learn Gaelic and study through the medium of Gaelic in regions where the language is a real and vibrant part of the local community. Courses are available through Lews Castle College UHI, at its sites throughout the Western Isles, and Sabhal Mòr Ostaig UHI on the Isle of Skye; where you really can immerse yourself in the language.

We also know that our Gaelic-speaking students don't all study Gaelic-related courses, but that they still wish to interact with the university in Gaelic. Our first Gaelic Language Plan was approved in 2010, and set out how we intend to increase the visibility and audibility of Gaelic in our services to students. Many of our publications and services are available bilingually, and we're improving on this all the time.

# Arts, Humanities and Social Sciences

## Social and cultural research expertise

**At the University of the Highlands and Islands we reflect the heritage of the region in all its forms. We have considerable research strengths in archaeology, history, Nordic studies, Gaelic, and theology, and offer postgraduate courses in these areas.**

### **Archaeology**

Our archaeology team, based at Orkney College UHI and co-located

with the Orkney Research Centre for Archaeology (ORCA), combines internationally recognised research excellence with professional expertise in all aspects of archaeology and geophysics.

### **Gaelic language and culture**

We offer the UK's only Gaelic medium teaching and research institution at Sabhal Mòr Ostaig UHI on the Isle of Skye. It has a reputation for international excellence in research into Celtic

Studies and houses an impressive collection of Gaelic, Celtic and Highland resources and archives.

### **Nordic studies**

On the Northern Isles of Orkney and Shetland is the Centre for Nordic Studies; the first research centre of its kind to study the islands from a Nordic perspective. The centre has gained international recognition for its research into Nordic and Northern Scottish culture and heritage.



### **Remote and rural studies**

Researchers at the UHI Centre for Remote and Rural Studies are addressing the social, economic, environmental, and cultural challenges facing remote and rural regions across the globe.

### **Theology**

At Highland Theological College UHI in Dingwall, research staff are producing work that was recognised in the most recent Research Assessment Exercise (RAE)

as 'internationally excellent'. The college boasts an extensive library of more than 60,000 theological titles, some of which are nationally important archives.

### **History**

In the historic town of Dornoch in Sutherland the UHI Centre for History is building a strong research base in all aspects of Scottish and Highlands and Islands history.

### **Rural childhood**

The Centre for Rural Childhood, based at Perth College UHI and directed by Professor Rebecca Wallace, researches the issues of children worldwide who grow up in a rural environment. Professor Wallace, an expert on international law and human rights, leads on all aspects of childhood including, health, education, drugs, crime, and abuse, all in a rural context.



## Archaeological Practice PgDip/MA

Orkney, Shetland, Caithness and Sutherland have some of the world's most renowned archaeological monuments including Skara Brae, Maeshowe, the Camster Cairns and Mousa Broch. The MA Archaeological Practice offers you the chance to study and practice archaeology based in Orkney, at the heart of this internationally important historical region.

You will benefit from being part of a vibrant archaeological research community based in Orkney.

You will learn the excavation and curation skills required to appraise archaeological methods with confidence, through course work and hands-on field experience.

You will learn through face-to-face lectures and tutorials at Orkney College UHI and VC tutorials with experts based at other UHI campuses. There is also a significant amount of fieldwork that involves excavation, investigation and curation techniques in one of the world's best archaeological classrooms.

### Course structure

You can study individual modules for personal or professional interest, or work towards the PgDip or Masters degree.

### PgDip

To complete the PgDip you must study six taught modules over two semesters. Modules may include: theory and practice; professional practice; research skills; excavation; placement; geophysical survey; underwater archaeology; upland landscape management; and death and burial archaeology.

### MA

To achieve the award of MA you must complete a research dissertation.

---

### AT A GLANCE

---

**Ft** **Pt** **F2F** **VC** **OI**

### Entry requirements

Undergraduate degree in archaeology or related subject, or equivalent academic or professional qualification. Those who can demonstrate extensive professional experience without these qualifications will also be considered.

### Campus

Orkney College UHI

### Course starts

September

### Career opportunities

Government agencies and local authorities; tourism, heritage sites; national and countryside parks; universities; museums; contract units and consultancy; PhD research.

### Fees

See page 45



# Orkney and Shetland Studies

## PgCert/PgDip/MLitt

This unique course is delivered by the prize-winning Centre for Nordic Studies team and gives you the opportunity to study the history, culture, literature, archaeology and language of Orkney and Shetland, either on the islands or by distance learning from UHI learning centres across the Highlands and Islands.



The Orkney and Shetland islands, along with Caithness on the Scottish mainland, are positioned at the centre of the Nordic world and combine a wealth of archaeological and cultural heritage, resulting from their strategic importance through the ages.

You will benefit from lectures by local experts and small class sizes. You will learn through a combination of video conference lectures and tutorials, and online study via the UHI VLE.

### Course structure

You can study individual modules for personal or professional interest, or work towards the PgCert, PgDip or Masters degree.

### PgCert

Modules may include: Orkney and Shetland: myths and origins;

archaeological heritage of Orkney and Shetland; medieval history of Orkney and Shetland; early Scottish and Norse literature; historical and cultural perspectives of the North Atlantic Rim; and the Orkney and Shetland tongues.

### PgDip

Modules may include: traditional custom, belief and folklore of the Northern Isles; modern history of Orkney and Shetland; Orkney and Shetland literature; the language and palaeography of older Scots; exploring creative writing; and the North Atlantic Rim literary context.

### MLitt

To achieve the award of MLitt you must complete a research dissertation.

## AT A GLANCE

Ft Pt VC OI

### Entry requirements

2.2 honours degree in a relevant subject area, such as history, archaeology, literature or ethnology.

### Access route

Direct access from UHI degrees in Scottish Cultural Studies, Scottish History, Social Sciences, and Archaeology and Environmental Studies.

### Campus

NAFC Marine Centre UHI  
Orkney College UHI  
Shetland College UHI  
Selected UHI learning centres

International students can study the course via distance learning online and by video conference.

### Course starts

September and January

### Career opportunities

Primary school teaching on completion of a PGDE(P); secondary school teaching in English and History on completion of a PGDE(S); community/adult education; journalism; governmental agencies; tourism.

### Fees

See page 45



# History of the Highlands and Islands

PgCert/PgDip/MLitt

This is the first ever taught postgraduate course that focuses on the complex, colourful and often conflict-driven history of the Highlands and Islands of Scotland.

You will study Highlands and Islands history from the medieval period to the twentieth century, covering topics such as clearance, emigration, myth and memory, and Lordship of the Isles. Through in-depth analysis of these events you will be encouraged to explore, question and even abandon certain stereotypes and cherished myths.

The course is available to study entirely online, with support from staff and fellow students through online discussion forums.

## Course structure

You can study individual modules for personal or professional interest, or work towards the PgCert, PgDip or Masters degree.

## PgCert

The core module is 'arguments and alternatives: models, interpretations and debates in Highlands and Islands history'. You will also choose option modules from the list below.

## PgDip

Core modules at PgDip and MLitt levels are: 'arguments and alternatives: models, interpretations and debates in Highlands and Islands history' and 'authors and archives: sources in Highlands and Islands history'. You will also choose option modules from the list below.

## MLitt

To achieve the award of MLitt you must complete a research dissertation.

**Option modules** may include, but are not limited to: the clearances; the seventeenth century Highlands; Lordship of the Isles; the diaspora; gender and the family; myth and memory; and the practice and theory of oral history.

## AT A GLANCE

Ft Pt OI

### Entry requirements

2:1 honours degree in a history subject. Applicants with 2:1 honours in another cognate subject will be considered individually.

### Access route

Direct access from UHI degrees in Scottish History, History and Politics, Scottish History and Archaeology.

### Campus

You will study entirely online with support from expert staff and researchers at the UHI Centre for History.

### Course starts

September and January

### Career opportunities

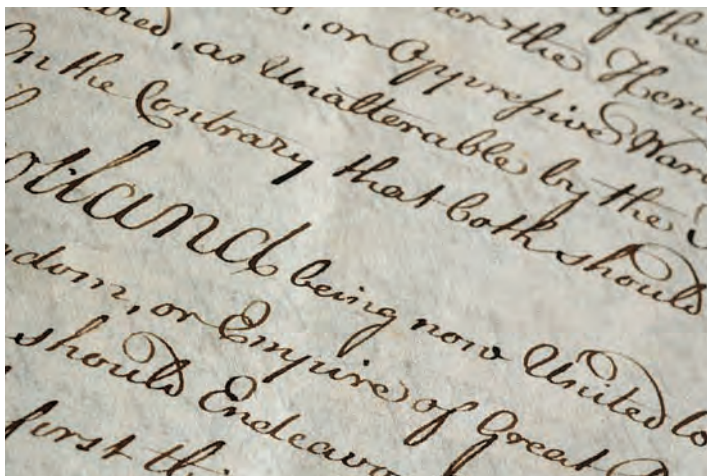
Teaching; research; media and journalism; museums and libraries; or community/adult education.

### Fees

See page 45

# Highlands and Islands Literature PgCert/PgDip/MLitt

The MLitt Highlands and Islands Literature allows you to study the writers and literatures of this hugely creative region in the communities to which they belong. Available to study at several UHI campuses, you can explore the literary heritage of the Highlands and Islands, whilst at the same time experiencing first-hand the wider culture of the region.



You will study three main themes throughout the course, namely: landscape and identity; the literary and linguistic legacy for the modern period; and the place of Highlands and Islands literature in the wider context.

You will benefit from lectures and seminars by local writers, and small class sizes. You will learn through a combination of video conference lectures and tutorials, and online study via the UHI VLE.

## Course structure

You can study individual modules for personal or professional interest, or work towards the PgCert, PgDip or Masters degree.

## PgCert

Modules may include: the Gaelic legacy; writers and place; literary iconographies; historical and cultural perspectives of the North Atlantic Rim; and early Scottish literature.

## PgDip

Modules may include: modern Scottish Gothic; a tour of the Highlands; exploring creative writing; the language and palaeography of older Scots; and the North Atlantic Rim literary context.

## MLitt

To achieve the award of MLitt you must complete a research dissertation.

---

## AT A GLANCE

---

**Ft** **Pt** **VC** **OI**

### Entry requirements

2.2 honours degree in Scottish/English literature and/or language or other cognate discipline.

### Access route

Direct access from UHI degree in Scottish Cultural Studies with bridging unit.

### Campus

Argyll College UHI  
Inverness College UHI  
Lews Castle College UHI  
Moray College UHI  
North Highland College UHI  
Orkney College UHI  
Perth College UHI  
Shetland College UHI  
West Highland College UHI  
Selected UHI learning centres

International students can study the course via distance learning online and by video conference.

### Course starts

September and January

### Career opportunities

Secondary teaching in English (on completion of PGDE(S)); tourism; local government posts; journalism; or postgraduate research.

### Fees

See page 45

# Socio-Legal Issues of Childhood PgCert

If you are working with children, for example, in education, social work, police or judiciary, and are interested in the socio-legal issues that affect a child's development, this new postgraduate certificate is at the forefront of original and innovative work in this field. You will explore a range of models and philosophies relating to contemporary childhood issues and developments.



You will study part time online with support from expert staff at the Centre for Rural Childhood, based at Perth College UHI.

The flexibility of the course means that you can study wherever you are; in Scotland, the UK or elsewhere in the world.

## Course structure

Core modules for the PgCert may include: the UNCRC: its development and implementation; research with children; Article 12: listening to the child's voice; and contemporary issues of children and childhood.

---

## AT A GLANCE

---

**Pt** **Ol**

### Entry requirements

2.2 honours degree in relevant discipline. An ordinary degree will be considered with appropriate professional experience. Other relevant professional qualifications such as: social work, teaching, or community education.

### Access route

You can gain entry from UHI degrees in Child and Youth Studies, Childhood Practice, and Social Sciences.

### Campus

You will study entirely online through supported online learning. You can study anywhere in the UK, including UHI learning centres, and internationally.

### Course starts

September and January

### Career opportunities

Roles in social work, family services, voluntary organisations, locally or internationally.

### Fees

See page 45



# Restorative Practice

## PgCert

**If you are interested in exploring alternatives to criminal justice that focus on repairing the harm done to individuals and communities, rather than on simply punishing offenders, this new PgCert Restorative Practice is at the forefront of original and innovative academic work in the field.**

The course brings together theory, research and practice in education, counselling, criminal justice and social work into the emerging social science of restorative practice.

You will study part time online with support from expert staff at the Centre for Rural Childhood, based at Perth College UHI. The flexibility of the course means that you can study wherever you are; in Scotland, the UK or elsewhere in the world.

### Course structure

Core modules for the PgCert may include: introduction to restorative practices in different settings; origins of restorative justice; implementing restorative policies in practice; and international perspectives in restorative practice.

---

## AT A GLANCE

---

**Pt** **OI**

### Entry requirements

2.2 honours degree in relevant discipline. An ordinary degree will be considered with appropriate professional experience. Other relevant professional qualifications such as: social work, teaching, or community education.

### Access route

You can gain entry from UHI degrees in Child and Youth Studies, Childhood Practice, and Social Sciences.

### Campus

You will study entirely online through supported online learning. You can study anywhere in the UK, including UHI learning centres, and internationally.

### Course starts

September and January

### Career opportunities

Roles in government agencies, the police, social work, prison service, education and the third sector.

### Fees

See page 45



## Theological Studies MTh

This Master of Theology course offers you advanced theological study in the fields of Reformed theology and practical theology. You have the choice of three pathways in this postgraduate theology course: Theological Studies; Reformed Theology; and Pastoral Theology.

The Masters course is particularly suitable for those in full-time pastoral ministry or who desire to enter Christian ministry. Modules are taught in one week blocks throughout the year, so you can fit your studies around your professional and personal commitments.

You will study at Highland Theological College UHI in Dingwall, a recognised training provider for the ministry.

### Course structure

#### Theological Studies

This pathway allows you to combine modules from either of the following pathways to achieve a generic Masters-level theological qualification.

#### Reformed Theology

Modules may include: history of Reformed theology; Scottish covenant theology; Calvin and Calvinism; Reformed theology and pastoral ministry; method in Reformed theology; Zwingli and the Swiss Reformation; and Romans in the Reformed tradition.

#### Pastoral Theology

Modules may include: Reformed theology and pastoral ministry; the study of spirituality in its Christian context; counselling and pastoral care; Christian communication in a post-modern world; chaplaincy ministry; and homiletics.

---

### AT A GLANCE

---

**Ft** **Pt** **F2F**

#### Entry requirements

2.1 honours in Theology. As the MTh is used by the Church of Scotland as part of their training for the ministry requirements, we will also consider granting entry to a student with a good ordinary degree.

#### Access route

Direct access from the UHI degree in BA (Hons) Theological Studies.

#### Campus

Highland Theological College UHI

#### Course starts

September

#### Career opportunities

Minister, pastor or other teaching elder; teaching in colleges, seminaries and universities; and missionary society staff.

#### Fees

See page 45

# Cultar Dùthchasach agus an Àrainneachd

## Material Culture and the Environment

PgCert/PgDip/MA

This Masters course is delivered entirely through the medium of Gaelic, so communicative ability in Gaelic is essential. Sabhal Mòr Ostaig UHI offers courses which can bring you to a suitable level of fluency in the language including the Access to Gaelic course, An Cùrsa Inntigidh.



Clann 'Ic Alasdair, Arasaig, 1904

Gheibh thu eòlas domhainn air caractar is cor sòisealta is eaconamach na Gàidhealtachd le bhith a' rannsachadh cultar dùthchasach, cànan is cleachdaidhean na sgìre, cho math ri cruth na tìre agus na h-àrainneachd.

Bidh thu ag ionnsachadh tron VLE air-loidhne aig UHI agus tro cho-labhairtean fòn le stiùireadh bhon luchd-teagaisg, cho math ri obair-làraich. Thèid an cùrsa a libhrigeadh uile gu lèir tro mheadhan na Gàidhlig.

### Structar a' chùrsa

Gabhaidh modalan a' chùrsa a dhèanamh fa leth no còmhla ri chèile. Dh'fhaodadh gum bi iad sin gad threòrachadh do PgCert, PgDip agus for-cheum MA.

### PgCert

Am measg nam modalan riatanach airson PgCert a choisinn tha Cultar Dùthchasach agus Tìr-mòr na Roinn Eòrpa, Bailtean agus Iomairean, agus Cultar Dùthchasach - Dòighean Rannsachaidh. Bidh agad ri modal eile roghainneil a thaghadh, Seasmhachd air an Talamh no Mac an Duine agus an Saoghal Nàdarra.

### PgDip

Am measg nam modalan riatanach airson PgDip a choisinn tha Thar nan Linn, Cruthachadh agus Àrainneachd, agus Nuadh Bheachdan. Bidh agad ri modal eile roghainneil a thaghadh, Dòighean Beatha agus Nàbaidheachd no Imrich agus Buaidh Beatha.

### MA

Gus MA a choisinn feumaidh tu tràchdas rannsachaidh a chrìochnachadh gu soirbheachail.

## GRAD-SHEALLADH

Pt AC OI

### Inntigeadh

Ceum le urram aig 2:2 no nas fheàrr ann an cuspair iomchaidh. Thathas a' cur fàilte air tagraichean aig nach eil na teisteanasan seo ach aig a bheil eòlas proifeiseanta ann an cuspairean iomchaidh fios a chur thugainn. Tha comas conaltraidh ann an Gàidhlig riatanach agus tha aig tagraichean ri agallamh a dhèanamh airson an comas cànan a dhearbhadh.

### Cuine is càite

Faodaidh tu an cùrsa a dhèanamh air-loidhne aig àm agus ann an àite sam bith a tha freagarrach dhut fhèin.

### Cùrsa ri fhaotainn

An t-Sultain

### Cothroman obrach

Roinn an dualchais agus taighean-tasgaidh; foghlam na Gàidhlig; an roinn phoblach, buidhnean leasachaidh agus cultarach, buidhnean saor-thoileach is neo-riaghaltasach.

### Cìsean

Faic duilleag 45





# Education

## Advancing the skills of educators

**At the University of the Highlands and Islands we offer taught postgraduate and professional qualifications for teachers at primary, secondary, FE and HE levels, through our own expertise and a special partnership with the University of Strathclyde.**

Our postgraduate courses include: the MSc Chartered Teacher and a Master of Education (MEd), which has a particular focus on teaching and education.

### **Progressing teaching in Higher Education**

UHI places great emphasis on the quality of teaching it provides to all of its students.

As such, we have introduced a new postgraduate certificate in Teaching in Higher Education, which is grounded in experiential learning and reflective practice.

As part of the Master of Education, this new PgCert is underpinned by the core knowledge and professional values required of Fellows of the Higher Education Academy (HEA) and maps to the UK Professional Standards Framework (UKPSF).

Successful completion of the PgCert Teaching in Higher Education will make you eligible to become a Fellow of the HEA.



# Chartered Teacher

## PgCert/PgDip/MSc

As an experienced teacher this part-time course will give you the chance to gain chartered teacher status through distance learning with support from expert staff, and facilitated by excellent resources, at UHI.



Through our partnership with the University of Strathclyde we are able to offer you the four core modules, plus several option modules, for the MSc Chartered Teacher via distance learning; a combination of online materials, video conference and audio conference tutorials.

This highly-regarded qualification, accredited by the General Teaching Council, will improve your own performance in the classroom and give your pupils a much better learning experience.

### Course structure

You can study individual modules for continuing professional development (CPD), or work towards the PgCert, PgDip or Masters degree.

### PgCert

Core modules are: professional development; learning and teaching; education for all; and working together.

### PgDip

For the PgDip there is a wider choice including: mentoring; ICT; developing potential through placement; independent study; implications for influencing learning, teaching, self development and awareness; and the learning school.

### MSc

To gain the award of MSc you must complete a research dissertation.

---

## AT A GLANCE

---

**Pt** **VC** **AC** **OI**

### Entry requirements

Possession of full registration with the GTCS, at the top of the main grade salary scale, with a CPD portfolio. You will need to apply to the GTCS for a certificate confirming your eligibility. See [www.gtcs.org.uk](http://www.gtcs.org.uk) for more information on eligibility.

### Campus

You will receive your distance learning pack at enrolment, which you can work through from home or your place of work, with email and telephone support from your tutor.

### Course starts

September and February

### Career opportunities

Improve your classroom teaching and increase your earning potential.

In association with





# Master of Education\*

## PgCert/PgDip/MEd

If you are working in an education or training context, this part-time postgraduate course can help you take your career to the next level.

You will study online via the UHI VLE, and our mentoring system will ensure that you are supported throughout your studies, whether you decide to study one single module, or the full Masters course. The PgCert Teaching in Higher Education is accredited by the Higher Education Academy (HEA), and on completion of the PgCert you will be eligible for membership of the HEA.

### Course structure

You can study individual modules for continuing professional development (CPD), or work towards the PgCert, PgDip or Masters degree.

### PgCert Teaching in Higher Education

Core modules are: policy and management; and teaching and learning in higher education. You will also study one option module

from the list below. If you wish to continue to the MEd, you should choose the research skills option.

### PgDip

The core module is professional development through action. You must also choose two option modules from the list below.

### MEd

To achieve the award of MEd you must complete a research dissertation.

**Option modules** may include: research skills; research supervision; developing potential through placement; leading and managing remotely; leadership in practice; and creativity through collaboration.

---

## AT A GLANCE

---

**Pt** **OI**

### Entry requirements

Undergraduate honours degree, although consideration is given to prospective candidates with different experience and/or qualifications. You need to be in full-time employment in education and or training.

### Campus

This course is available to study via supported online learning when and where it suits you.

### Course starts

September and February

### Career opportunities

Education training or educational management.

### Fees

See page 45

\* Subject to validation



# Health and Wellbeing

## Building healthier communities

**The University of the Highlands and Islands is one of the original pioneers of supported distance learning. For over a decade we have been developing innovative ways to provide higher education to our distributed student body.**

We fully recognise that pressures of work in the health and social care sector mean that professionals wanting to develop their skills require maximum flexibility in the way they study. Our expertise is in supported distance learning, which means that you will have as much help and feedback as you need while progressing through your course at a pace that suits you.

Our professional postgraduate courses are underpinned by growing research expertise in health issues.

### **Diabetes and cardiovascular science**

The UHI Department of Diabetes and Cardiovascular Science, is conducting extensive research primarily into the causes and consequences of diabetes, but also into a wide range of clinical conditions; most notably cardiovascular diseases, inflammatory diseases and cancer.

The department is also home to the Free Radical Research Facility, and has research expertise in genetics and immunology and lipidomics.

### **Rural health**

The Centre for Rural Health is a collaborative venture between the University of the Highlands and Islands and the University of Aberdeen, where researchers are working on a range of policy and research projects focusing on health and care provision in rural communities.

One of the centre's success stories is the O4O project, older people for older people, which actively engaged with remote and rural communities to draw on the skills and experience of older people so that they could help each other and stay within their own homes and communities.

# Health and Wellbeing

## PgCert/PgDip/MA

The MA Health and Wellbeing is designed to meet the career development needs of health and social care professionals in the UK.



The course will give you the most up-to-date legislation on patient care and managing staff within health and social care settings, enabling you to take your career to the next stage and to make a real difference to the health and wellbeing of those in your care.

You will study part time through fully supported online learning, with lectures, tutorials and other materials accessible from the UHI VLE.

### Course structure

You can study individual modules for continuing professional development (CPD), or work towards the PgCert, PgDip or Masters degree.

### PgCert

Core modules are: policy into practice; and individual and social influences on health.

### PgDip

If you wish to progress to the MA you should study: challenges and practice solutions in remote and rural areas; and developing research capability. Plus one option from the list below.

Alternatively you can study the first core module and two options from the list below.

### MA

To achieve the award of MA you must complete a research dissertation.

**Option modules** may include: child and adolescent mental health; developing communities; disability and society; diabetes; enabling self-management; informatics in health and social care; leading and managing remotely; risk, ethics and governance; and understanding contemporary leadership and management.

---

## AT A GLANCE

---

**Pt** **Ol**

### Entry requirements

2:1 honours degree or equivalent professional qualification. Applicants with a 2.2 honours degree or below, but with relevant professional experience will also be considered, in some cases with a bridging unit. You must be in relevant employment or engaged in relevant voluntary activities.

### Campus

This course is delivered through fully supported online learning, so that you can study when and where it suits you.

### Course starts

September and January

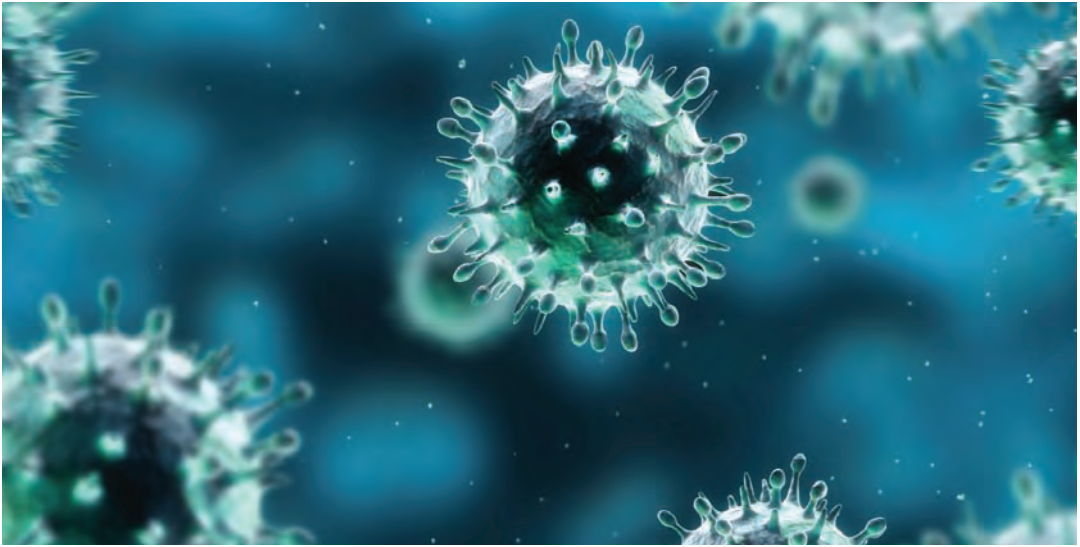
### Career opportunities

NHS staff currently on bands 5 and 6 of the NHS Career Framework Ladder can progress to bands 7 and 8; enhanced employment opportunities within new or existing organisation; or PhD study.

### Fees

See page 45





# Infection Control

PgCert/PgDip/MSc

If part of your professional role involves dealing with infection, or you wish to apply for more senior posts in infection control, this Masters course will give you the key skills you require.

You will develop your confidence and expertise in the management of infection prevention and control change.

You will learn through fully supported online study with lectures, tutorials and other materials accessible via the UHIVLE.

## Course structure

You can study individual modules for continuing professional development (CPD), or work towards the PgCert, PgDip, or Masters degree.

## PgCert/PgDip/MSc

Subject areas studied may include: micro-organisms and diseases; epidemiology; decontamination; infection prevention and control; public health law; health protection in the community; leading and managing; and host defence and protection.

To achieve the award of MSc you must complete a research dissertation.

---

## AT A GLANCE

---

Pt OI

### Entry requirements

2.1 honours degree in a health subject. Applicants with an ordinary degree or below, but with a minimum of three years' relevant professional experience will also be considered, in some cases with a bridging unit.

### Campus

This course is delivered through fully supported online learning, so that you can study when and where it suits you.

### Course starts

September

### Career opportunities

Enhanced employment opportunities within new or existing organisation, or PhD study.

### Fees

See page 45



# Medical Device Decontamination PgCert/PgDip/MSc

This postgraduate course offers you advanced professional development in the theory and practice of decontamination. You will enhance your knowledge and understanding through up-to-date technical information, designed to stimulate critical awareness of the scientific principles and evidence on which good practice is based.



The practice of decontamination is becoming increasingly technical in nature and you may find that your new skills and technical knowledge are in great demand.

You will learn through fully supported online study with lectures, tutorials and other materials accessible via the UHI VLE.

## Course structure

You can study individual modules for continuing professional development (CPD), or work towards the PgCert, PgDip, or Masters degree.

## PgCert/PgDip/MSc

Subjects studied may include: scientific principles underlying decontamination; legislation and standards; microbiological aspects of decontamination; decontamination consumables, utilities and facilities; infection prevention and control; public health law; host defence and protection; research methods and techniques; and micro-organisms and diseases.

To achieve the award of MSc you must complete a research dissertation.

---

## AT A GLANCE

---

**Pt** **OI**

### Entry requirements

2.1 honours degree in a health subject. Applicants with an ordinary degree or below, but with a minimum of three years' relevant professional experience will also be considered, in some cases with a bridging unit.

### Campus

This course is delivered through fully supported online learning, so that you can study when and where it suits you.

### Course starts

September

### Career opportunities

Enhanced employment opportunities within new or existing organisation, or PhD study.

### Fees

See page 45



# Business and Management

## Developing leaders and managers

**Our business and management courses are designed for working professionals wanting to take their careers to the next step. We have particular strengths in leadership, management and the tourism industry.**

### **The University of the Highlands and Islands Management School**

The University has recently established a Management School, within the faculty of arts, humanities and business. The school will develop learning opportunities to support the business community, whether commercial, public or third sector.

The school's initial offerings will be in the area of leadership and management, with new courses in e-marketing and entrepreneurship.

The school will also work with businesses across the Highlands and Islands, and the rest of the UK to develop and deliver bespoke solutions that help meet their needs as they seek to develop and grow.

### **Innovation in interpretation**

The Highlands and Islands of Scotland are an international tourist destination with world-class natural and built heritage. The University has taken advantage of the region's natural assets to develop expertise in providing high quality training for the tourism industry, from hospitality management to interpreting and managing environmental and heritage sites.

Innovative research and postgraduate courses for practitioners across the cultural and heritage

sectors are provided by the Centre for Interpretation Studies at Perth College UHI. The centre has strong links with many key environmental, cultural and heritage bodies – including Forestry Commission Scotland and the National Trust for Scotland – and is attracting an international audience to its courses.

[www.managementschool.uhi.ac.uk](http://www.managementschool.uhi.ac.uk)  
[www.managementschool.uhi.ac.uk/blog](http://www.managementschool.uhi.ac.uk/blog)  
[twitter.com/UHIMgtSchool](https://twitter.com/UHIMgtSchool)



# Leadership and Management

## PgCert/PgDip/MSc

This part-time postgraduate course will help you to become a much more effective and inspirational manager. Through structured, fully supported online learning you will share your professional experience and network with other students from a wide range of professional backgrounds.

On completion of the PgCert you will be eligible for associate membership of the Chartered Management Institute (CMI), which will significantly enhance your career prospects. The course is available to study part time online via the UHI VLE, allowing you to fit your study around your work and family commitments. You are also strongly advised to attend a two-day induction event in Inverness at the start of the course.

### AT A GLANCE

Pt OI

#### Entry requirements

2.1 honours degree. An ordinary degree will also be considered, along with appropriate professional experience. Candidates with no formal qualifications, who can demonstrate a capability and engagement in appropriate CPD, will be considered.

#### Campus

This course is delivered through the UHI Management School and is available to study via supported online learning when and where it suits you.

#### Course starts

September and February

#### Career opportunities

Management/senior management positions in private, public and third sector organisations; enhanced CPD leading to promotion opportunities.

#### Fees

See page 45

#### Course structure

You can study individual modules for continuing professional development (CPD), or work towards the PgCert, PgDip or Masters degree.

#### PgCert

Core modules are: understanding contemporary leadership and management; and creativity through collaboration. You will also choose one of the option modules listed below.

#### PgDip

Core modules are: strategic change and innovation; and managing internal and external engagement, communication and marketing. You will also choose one of the option modules listed below.

#### MSc

To achieve the award of MSc you must complete a research project, and the research methods module.

**Option modules** include, but are not limited to: leading and managing remotely; e-marketing; managing and developing the human resource; leading service improvement and diversity; information and financial decision-making; research methods; and developing performance excellence.



# Enterprise and e-Marketing

## PgCert

This hands-on postgraduate course is focused on business growth. You will develop your business and enterprise skills and gain a real appreciation of the role of e-marketing in facilitating business growth.



You will enhance your leadership and management competencies and develop your strategic thinking, which will strengthen your ability to manage your business in a more proactive way over the medium and long term. You will explore the range of online marketing tools available and learn how these can help you to better understand online customer behaviour and increase online sales.

The course is highly innovative and flexible, allowing you to work round the demands of your business, developing skills as you need them. You will study part time online via the UHI VLE and other online resources. In addition you will be supported by academic staff and business experts, as well as your fellow students.

### Course structure

Core modules are: strategic change and innovation; and e-marketing.

Option modules, from which you will choose one, include: creativity through collaboration; social media; information and financial decision-making; measuring and improving web performance and experience; managing external and internal engagement, communication and marketing; and web-based relationship marketing.

## AT A GLANCE

**Pt** **OI**

### Entry requirements

2.1 honours degree. Ordinary degree with relevant business experience.

### Campus

This course, delivered through the UHI Management School, is available to study via supported online learning when and where it suits you.

### Course starts

September and January

### Career opportunities

Leading and developing an existing SME, helping it grow and become more sustainable; creating or developing a new SME; or taking on increased responsibility within an SME (whether private or third sector).

### Fees

See page 45

# Entrepreneurial Leadership PgCert

If you are a small business owner or manager looking to develop your skills, knowledge and expertise, and drive innovation and change to grow your business, the postgraduate certificate in Entrepreneurial Leadership can help you achieve your goals.



You will explore the challenges and opportunities involved in growing your business sustainably, including the leadership and strategic options available to you. You will also evaluate how best to market and engage with customers using the opportunities provided through online marketing.

You will examine the financial decision-making process and the tools and approaches that can help you create a culture of performance excellence to drive change and innovation.

You will study almost entirely online through the UHI virtual learning environment (VLE) with support from expert staff at the UHI Management School.

## Course structure

You can study individual modules for CPD (continuing professional development) or work towards the full PgCert.

Core modules are: entrepreneurial strategy and business growth; e-marketing; information and financial decision-making; and delivering performance excellence.

---

## AT A GLANCE

---

**Pt** **Ol**

### Entry requirements

2.2 honours degree (or equivalent) in any subject. A third or an ordinary degree will be considered with appropriate professional experience.

### Campus

This course, delivered through the UHI Management School, is available to study via supported online learning when and where it suits you.

### Course starts

September and January

### Career opportunities

Leading and developing an existing SME, helping it grow and become more sustainable; creating or developing a new SME; or taking on increased responsibility within an SME (whether private or third sector).

### Fees

See page 45



## Health Leadership and Management PgCert

If you are a manager or aspiring manager in the health service the PgCert Health Leadership and Management can help you take the next step in your health care career.

You will enhance your knowledge and understanding of issues facing current and future leaders, and develop your skills to become a more effective leader in the health service.

The course will challenge your ideas and pre-conceptions about what leadership means both to yourself and to your work.

You will study almost entirely online via the UHI virtual learning environment (VLE) with support from expert staff at the UHI Management School. You will also have eight days face-to-face learning with your fellow students.

### Course structure

Core modules are: information and financial decision-making; and understanding contemporary leadership and management.

Option modules, from which you must choose one, include: leading and managing remotely; creativity through collaboration; and leading service improvement and diversity.

---

### AT A GLANCE

---

**Pt** **F2F** **Ol**

#### Entry requirements

2.2 honours degree (or equivalent) in any subject. A third or an ordinary degree will be considered with appropriate professional experience.

#### Campus

This course is delivered through the UHI Management School and is available to study via supported online learning when and where it suits you.

#### Course starts

January

#### Career opportunities

Management/senior management positions in private, public and third sector organisations; enhanced CPD leading to promotion opportunities.

#### Fees

See page 45



# Interpretation: Management and Practice

PgCert/PgDip/MSc

If you are passionate about creating exceptional visitor experiences, this postgraduate course will give you the knowledge and skills to develop visitor attractions that will engage tourists and communities alike.

The course is delivered by a team of experienced professionals, academics and researchers at the Centre for Interpretation Studies based at Perth College UHI.

You will learn online through videos, podcasts, interviews with practitioners, presentations, industry case studies, e-books and academic articles on the UHI VLE. These are complemented by regular scheduled discussions with tutors and fellow students, telephone tutorials and one-to-one study skills assistance.

### Course structure

You can study individual modules for personal or professional interest or work towards the PgCert, PgDip or Masters degree.

### PgCert

Core modules are: communication strategies and theories; interpretation planning; and implementation of interpretation.

### PgDip

You will choose three option modules from a list including: communicative design; interpreting the historic environment; interpreting the natural environment; research methods and techniques (core for continuing to MSc); sustainable tourism; and visitor studies.

### MSc

To achieve the award of MSc you must complete a research dissertation.

---

## AT A GLANCE

---

**Ft** **Pt** **OI**

### Entry requirements

Honours degree or relevant professional experience.

### Campus

You can study this course online from home or your place of work, anywhere internationally.

### Course starts

September and January

### Career opportunities

Enhanced CPD leading to promotion opportunities; public, private and voluntary/third sector officer, manager and senior management positions; self-employment; or PhD research.

### Fees

See page 45



# A LEGACY IN STONE

Even though they were stationed on the frontier, the Roman army at Vindolanda included many skilled stonemasons amongst its troops. The regular demolition and rebuilding of the fort provided ample opportunities for these soldiers to display their skills. They constructed buildings from locally quarried stone, including the headquarters (*principia*) and commanding officer's house (*praetorium*) which looked impressive, reflecting the architecture of Rome.



# Environmental and Rural Studies

Excellence in environmental  
and rural sustainability



**The University of the Highlands and Islands is at the forefront of research into climate change, marine science and renewable energy, with much of our work addressing the social, cultural and environmental impacts of development. Our postgraduate courses reflect this inclusive environmental research.**

### **Mountain studies**

At our Centre for Mountain Studies, based at Perth College UHI, an international group of scientists is studying mountain environments and the people who depend upon them, both in Scotland and around the world. The centre hosts the UNESCO Chair in Sustainable Mountain Development and its world-class research underpins the MSc Managing Sustainable Mountain Development.

### **Marine research**

Marine environment research is the focus for the Scottish Association for Marine Science UHI (SAMS UHI) in Oban, where 90% of research was judged to be 'internationally recognised' in the 2008 Research Assessment Exercise (RAE). SAMS UHI scientists are working on a range of projects within four departments: ecology; biogeochemistry and earth science; microbial and molecular; and physics, sea ice and technology.

### **Environmental research**

The Environmental Research Institute (ERI), based at North Highland College UHI in Thurso, is involved in research to address environmental issues and advance understanding of the sustainable use of the earth's natural resources.

ERI's research priorities include: renewable energy; climate change; ecology; biogeochemistry; emerging contaminants; bio-technology and bio resources.

### **Renewable energy research**

The Hebridean Marine Energy Futures project, based at Lews Castle College UHI on the Isle of Lewis, is developing skills, data, models, and strategies to inform the nation's marine energy industry.

The project has installed wave rider buoys at various points off the west coast of Lewis to collect data and establish which sites will be more efficient for wave energy developments. In autumn 2011 three of the wave rider buoys recorded extreme waves of more than 15 metres in height during a gale storm.



# Managing Sustainable Rural Development

## PgCert/PgDip/MSc

This postgraduate course will give you a multi-disciplinary view of rural development including the environment, community engagement, policy issues, and professional skills that will help you to progress to a managerial role in rural development.



On completion of the Masters course you will be eligible for full membership of the Institute of Economic Development.

You will study through fully supported online learning using materials on the UHI VLE, as well as online discussions moderated by your tutors. Assessments are diverse and continuous and do not include final face-to-face exams.

### Course structure

You can study individual modules for personal or professional interest, or work towards the PgCert, PgDip or Masters degree.

### PgCert

Modules may include: people and nature; sustainable development; policy frameworks and analysis; and developing communities.

### PgDip

Option modules, from which you must choose three, may include: research methods and techniques (recommended for continuing to MSc); biodiversity management; developing potential through placement; strategic environmental assessment; geographical information systems (GIS); sustainable tourism; water management; and field studies.

### MSc

To achieve the award of MSc you must complete a research dissertation.

### Accredited by



## AT A GLANCE

Ft Pt OI

### Entry requirements

Honours degree or ordinary degree in a relevant subject. Other qualifications will be considered if accompanied by a minimum of three years' relevant professional experience.

### Access route

UHI degrees in: Sustainable Development; Archaeology and Environmental Studies; Environmental Science; Sustainable Forest Management; Health Studies; Business and Management; Social Sciences.

### Campus

You will study entirely online through supported online learning. You can study anywhere in the UK, including UHI learning centres, and internationally. All students are required to attend a one-day induction in Scotland.

### Course starts

September

### Career opportunities

Management positions, both at home and abroad, in the public sector, voluntary organisations, non-governmental organisation development agencies or conservation bodies.

### Fees

See page 45

# Managing Sustainable Mountain Development

PgCert/PgDip/MSc

The MSc Managing Sustainable Mountain Development is an inter-disciplinary course that will give you a clear understanding of the complex issues faced by people living in mountainous areas.



The course is run from the Centre for Mountain Studies, based at Perth College UHI. The centre hosts the UNESCO Chair for Sustainable Mountain Development, held by Professor Martin Price.

You will study part time online via the UHI VLE. You will be supported by your tutors and fellow students by way of online discussions and chat rooms, email and telephone.

## Course structure

You can study individual modules for personal or professional interest, or work towards the PgCert, PgDip or Masters degree.

## PgCert

Modules may include: environmental and social issues in mountain areas; sustainable development; policy frameworks and analysis; and developing communities.

## PgDip

Option modules, from which you must choose three, may include: people and nature; biodiversity management; environmental assessment; geographical information systems (GIS); the information society and rural development; research methods and techniques (recommended for continuing to MSc); sustainable tourism; and water management.

## MSc

To achieve the award of MSc you must complete a research dissertation.

## Accredited by



## AT A GLANCE

Pt OI

### Entry requirements

Honours degree or ordinary degree in a relevant subject. Other qualifications will be considered if accompanied by a minimum of three years' relevant professional experience.

### Access route

UHI degrees in: Sustainable Development; Archaeology and Environmental Studies; Environmental Science; Sustainable Forest Management; Health Studies; Business and Management; Social Sciences.

### Campus

You will study entirely online through supported online learning. You can study anywhere in the UK, including UHI learning centres, and internationally. All students are required to attend a one-day induction in Scotland.

### Course starts

September

### Career opportunities

Management positions in the public sector or non-governmental organisations working in mountain areas in the UK and Europe. Work with voluntary groups, conservation bodies or the private sector.

### Fees

See page 45



# Sustainable Energy Solutions

## PgCert/PgDip/MSc

This new Masters course gives you a comprehensive view of the development and management of renewable energy projects, from small scale, through to major projects. You will be at the centre of the emerging renewable energy sector.

Studying online, on a full-time or part-time basis, you will critically analyse the theories, principles and concepts of sustainability and low-carbon technologies. All modules are delivered by recognised experts in the field of renewable energy.

### Course structure

You can study individual modules for personal or professional interest, or work towards the PgCert, PgDip or Masters degree.

### PgCert

Modules may include: energy, climate and carbon; transition to a low-carbon society; and sustainable development.

### PgDip

Option modules, from which you must choose three, may include: renewable energy technologies; participatory approaches to community consultation; developing a community energy project; sustainable communities (residential); research methods and techniques (strongly recommended for continuing to MSc); and sustainable land use and energy.

### MSc

To achieve the award of MSc you must complete a research dissertation.

---

## AT A GLANCE

---

**Ft** **Pt** **OI**

### Entry requirements

Honours degree in a relevant subject. Applicants with other qualifications and at least three years' relevant work experience will also be considered.

### Access route

UHI degrees in: Sustainable Development; Archaeology and Environmental Studies; and Environmental Science.

### Campus

You can study from anywhere in the UK through supported online learning via the UHI VLE.

### Course starts

September

### Career opportunities

Strategic positions within the renewable energies industry.

### Fees

See page 45

# Developing Low-Carbon Communities

## PgCert/PgDip/MSc

This new Masters course will enable you to influence directly the way in which we develop communities in the future to minimise our impact on the environment and climate change.



Studying online, on a full-time or part-time basis, you will critically analyse the theories, principles and concepts of carbon consumption and community development. All modules are delivered by recognised experts in the fields of community development and low carbon technologies.

### Course structure

You can study individual modules for personal or professional interest, or work towards the PgCert, PgDip or Masters degree.

### PgCert

Modules may include: energy, climate and carbon; transition to a low-carbon society; and sustainable development.

### PgDip

Option modules, from which you must choose three, may include: wind, wave and tidal; developing a community energy project; sustainable communities (residential); research methods and techniques (strongly recommended for continuing to MSc); sustainable land use and energy; and energy modelling for building.

### MSc

To achieve the award of MSc you must complete a research dissertation.

---

## AT A GLANCE

---

**Ft** **Pt** **Ol**

### Entry requirements

Honours degree in a relevant subject. Applicants with an ordinary degree or other qualification and at least three years' relevant work experience will also be considered.

### Access route

UHI degrees in: Sustainable Development; Archaeology and Environmental Studies; and Environmental Science.

### Campus

You can study from anywhere in the UK through supported online learning via the UHI VLE.

### Course starts

September

### Career opportunities

You will be well-equipped to take up positions in the management of community development projects, and in the public and private sectors.

### Fees

See page 45



## Application and finance

### Applying for a UHI course

You will find a list of all our postgraduate courses at [www.uhi.ac.uk/postgraduate](http://www.uhi.ac.uk/postgraduate), and you can apply for all taught postgraduate courses at UHI via our website at [www.uhi.ac.uk/apply](http://www.uhi.ac.uk/apply) or from the link on the right hand side of each course page.

You can also search and apply online for taught postgraduate degrees at UHI through Graduate Prospects [www.prospects.ac.uk](http://www.prospects.ac.uk).

### Financing your postgraduate studies

As a postgraduate student you, or your employer/ sponsor, will be expected to fund the costs of your chosen course.

- Full-time study for a Masters degree is based on two semesters (three or four modules per semester; 120 credits) plus dissertation
- Part-time study for a Masters degree is normally one or two modules per semester plus dissertation

A maximum of six years is normally allowed to complete a part-time Masters degree. It is also possible to study individual modules to gain transferable credit.

Enquiries from employers for multiple student registrations are welcome and special fee arrangements may apply.

You will find the costs associated with each postgraduate course at UHI on the adjacent page.



POSTGRADUATE FEES ACADEMIC YEAR 2012/2013	UK/EU FT fee	INT FT fee
Archaeological Practice MA	£4,320	£9,000 (on-site)
Developing Low-Carbon Communities MSc	£4,680	N/A
Enterprise and e-Marketing PgCert	£2,160	N/A
Entrepreneurial Leadership PgCert	£3,000	N/A
Health and Wellbeing MA	£4,320	£6,480 (online)
Health Leadership and Management PgCert	£1,850	N/A
Highlands and Islands Literature MLitt	£4,320	£6,480 (online)
History of the Highlands and Islands MLitt	£4,320	£6,480 (online)
Infection Control MSc	£4,320	£6,480 (online)
Interpretation: Management and Practice MSc	£5,880	£7,740 (online)
Leadership and Management MSc	£6,480	N/A
Managing Sustainable Mountain Development MSc	£4,680	£8,010 (online)
Managing Sustainable Rural Development MSc	£4,680	£8,010 (online)
Master of Education MEd	£4,320	N/A
Material Culture and the Environment MA	£4,320	£6,480 (online)
Medical Device Decontamination MSc	£4,320	£6,480 (online)
Orkney and Shetland Studies MLitt	£4,320	£6,480 (online)
Restorative Practice PgCert	£2,160	£2,205 (online)
Socio-Legal Issues of Childhood PgCert	£2,160	£2,205 (online)
Sustainable Energy Solutions MSc	£4,680	N/A
Theological Studies MTh	£4,320	£9,000 (on-site)

FT = Full-time. INT = International. Please contact our information line at [info@uhi.ac.uk](mailto:info@uhi.ac.uk) for fees for courses not listed above.

# Student support

As a postgraduate student at the University of the Highlands and Islands you'll be supported throughout your studies by approachable, expert staff, whether you choose to study on-campus or online.

## UHI student charter

The University of the Highlands and Islands student charter sets the standards of service you can expect to receive from application through to graduation. We recommend that you read the charter, which can be found on our website [www.uhi.ac.uk/student-charter](http://www.uhi.ac.uk/student-charter).

## UHI career centre

The UHI career centre is an online resource for all UHI students and graduates, providing inspiration, information, insights and interaction to help you plan for your future career. For more information or to get in touch visit the career centre at [www.uhi.ac.uk/careercentre](http://www.uhi.ac.uk/careercentre).

## UHI Graduate School

The new Graduate School is a focal point for all postgraduate research activity across the UHI network, providing services for research staff and students. The aim of the Graduate School is to support, promote and enhance a high quality learning experience for all our research students.

The UHI Graduate School provides advice and guidance for research students on registration, progress reporting, welfare and management, and is the source of all information, policy and procedural documents pertaining to postgraduate research degree delivery.

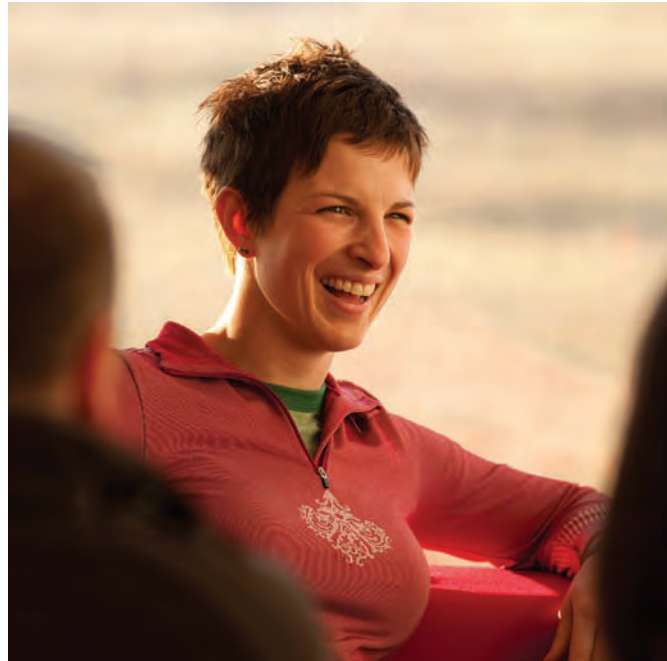
There is a programme of transferrable skills training for all students who can also apply for discipline-specific tuition, to ensure our postgraduates have a skill set that will promote transfer into academic, business, commercial and other careers.

## UHI library and learning resources

You will have access to a wide range of books, journals, e-books and other online resources, no matter how you choose to study. You can request books from across the UHI partnership through the inter-site loan system.

Part-time and distance learning students have access to the libraries of other UK universities through the UK Libraries Plus scheme.

For more information on the UHI library service, visit [www.uhi.ac.uk/library](http://www.uhi.ac.uk/library).



## Accommodation

Should you choose a location-based subject, such as MA Archaeological Practice, you should contact the campus at which you will be studying and they will help you to find suitable accommodation for the duration of your studies. Private accommodation can often be cheaper in rural areas than in larger cities.

## Childcare

Excellent childcare facilities are available at several of the UHI colleges. You may also be able to apply to the Discretionary Childcare Funds for financial help towards childcare. Please visit our website for more information.

## Students with disabilities

Wherever and however you are studying, if you have a disability and feel you would get more from your studies with some additional support, then please contact us as soon as possible. You may want us to arrange personal support, or find someone with specialist skills, or help you make an application for financial support such as the Disabled Students Allowance. The information you give us will be treated as confidential and only given to others with your permission.

You will find more information on all of the support available to students on our website [www.uhi.ac.uk/students](http://www.uhi.ac.uk/students).

# Useful contacts and addresses

## University of the Highlands and Islands

Executive Office, Ness Walk,  
Inverness, IV3 5SQ  
T: 01463 279000  
F: 01463 279001  
E: info@uhi.ac.uk  
www.uhi.ac.uk

### Principal and Vice Chancellor:

James Fraser

**Information line:** 0845 272 3600

**International:** +44 (0)1463 732551

Registered Scottish Charity No. SC022228

## UHI Graduate School

Executive Office, Ness Walk  
Inverness, IV3 5SQ  
T: 01463 279332

E: gradresearch@uhi.ac.uk

**Head of Graduate School:** Dr Lois Calder

## Argyll College UHI

West Bay, Dunoon, Argyll, PA23 7HP

T: 0845 230 9969

F: 01369 707185

E: info@argyllcollege.ac.uk

www.argyllcollege.uhi.ac.uk

**Director:** Michael Breslin

**Admissions:** John McLuckie

**Support services:** Liz Richardson

Registered Scottish Charity No. SC026685

## Highland Theological College UHI

High Street, Dingwall, IV15 9HA

T: 01349 780000

F: 01349 780001

E: htc@htc.uhi.ac.uk

www.htc.uhi.ac.uk

**Principal:** Rev Hector Morrison

**Admissions:** Angela Spence

**Support services:** Angela Spence

Registered Scottish Charity No. SC029190

## Inverness College UHI

Longman Campus, 3 Longman Road,

Longman South, Inverness, IV1 1SA

T: 01463 273000

F: 01463 711977

E: info@inverness.uhi.ac.uk

www.inverness.uhi.ac.uk

**Principal:** John Spencer

**Admissions:** Student records department

**Support services:** Karen Mitchell

Registered Scottish Charity No. SC021197

## Lews Castle College UHI

Stornoway, Isle of Lewis, HS2 0XR

T: 01851 770000

F: 01851 770001

E: enquiries@lews.uhi.ac.uk

www.lews.uhi.ac.uk

**Admissions:** Catherine Donald

**Support services:** Christine Mackinnon

Registered Scottish Charity No. SC021204

## Moray College UHI

Moray Street, Elgin, IV30 1JJ

T: 01343 576000

F: 01343 576001

E: mc.registry@moray.uhi.ac.uk

www.moray.ac.uk

**Principal:** Mike Devenney

**Registry:** Maureen Beaton

**Support services:** Heather Henderson

Registered Scottish Charity No. SC021205

## NAFC Marine Centre UHI

Port Arthur, Scalloway, Shetland, ZE1 0UN

T: 01595 772000

F: 01595 772001

E: info@nafc.uhi.ac.uk

www.nafc.ac.uk

**Director:** Professor David Gray

**Admissions:** Anne Birnie

**Support services:** Caroline Hepburn

Registered Scottish Charity No. SC003715

## North Highland College UHI

Ormlie Road, Thurso, Caithness,

KW14 7EE

T: 01847 889000

F: 01847 889001

E: info@northhighland.ac.uk

www.northhighland.ac.uk

**Principal:** Dr Gordon Jenkins

**Admissions:** Amanda Buttress

**Support services:** Anna Swanson

Registered Scottish Charity No. SC021215

## Orkney College UHI

East Road, Kirkwall, Orkney, KW15 1LX

T: 01856 569000

F: 01856 569001

E: enquiries@orkney.uhi.ac.uk

www.orkney.uhi.ac.uk

**Principal:** Dr Bill Ross

**Admissions:** Peter Kitney

**Support services:** Linda Russell

## Perth College UHI

Crieff Road, Perth, PH1 2NX

T: 0845 270 1177

F: 01738 877001

E: pc.enquiries@perth.uhi.ac.uk

www.perth.ac.uk

**Principal:** Dr Thomas Moore

**Admissions:** Admissions officer

**Support services:** Student services team

Registered Scottish Charity No. SC021209

## Sabhail Mòr Ostaig UHI

Teangue, Sleat, Isle of Skye, IV44 8RQ

T: 01471 888000

F: 01471 888001

E: trusadh@smo.uhi.ac.uk

www.smo.uhi.ac.uk

**Director:** Professor Boyd Robertson

**Admissions:** Eilidh Grant

**Support services:** Sheila Hamilton

Registered Scottish Charity No. SC002578

## Scottish Association for

### Marine Science UHI

Scottish Marine Institute,

Oban, Argyll, PA37 1QA

T: 01631 559000

F: 01631 559001

E: info@sams.ac.uk

www.sams.ac.uk

**Director:** Professor Laurence Mee

**Admissions:** Linda Robb

Registered Scottish Charity No. SC009206

## Shetland College UHI

Gremista, Lerwick, Shetland, ZE1 0PX

T: 01595 771000

F: 01595 771001

E: shetland.college@shetland.uhi.ac.uk

www.shetland.uhi.ac.uk

**Director:** Professor David Gray

**Admissions:** Student records team

**Support services:** Linda Tait

## West Highland College UHI

Carmichael Way, Fort William, PH33 6FF

T: 01397 874000

F: 01397 874001

E: info@whc.uhi.ac.uk

www.whc.uhi.ac.uk

**Admissions:** Admissions officer

**Support services:** Georgina Morrison

Registered Scottish Charity No. SC024193

# A-Z course listing

## A

Archaeological Practice MA, 12

## C

Chartered Teacher MSc, 22  
Cultar Dùthchasach agus an  
Àrainneachd MA, 19

## D

Developing Low-Carbon  
Communities MSc, 43

## E

Enterprise and e-Marketing PgCert,  
33  
Entrepreneurial Leadership PgCert,  
34

## H

Health and Wellbeing MA, 26  
Health Leadership and Management  
PgCert, 35  
Highlands and Islands Literature  
MLitt, 15  
History of the Highlands and Islands  
MLitt, 14

## I

Infection Control MSc, 28  
Interpretation: Management and  
Practice MSc, 36

## L

Leadership and Management MSc,  
32

## M

Managing Sustainable Mountain  
Development MSc, 41  
Managing Sustainable Rural  
Development MSc, 40  
Master of Education MEd, 23  
Material Culture and the  
Environment MA, 19  
Medical Device Decontamination  
MSc, 29

## O

Orkney and Shetland Studies MLitt,  
13

## R

Restorative Practice PgCert, 17

## S

Socio-Legal Issues of Childhood  
PgCert, 16  
Sustainable Energy Solutions MSc,  
42

## T

Theological Studies MTh, 18



Published by the University of the Highlands and Islands, a limited company registered in Scotland No.148203. Registered Scottish Charity No. SC022228. Registered office: 12b Ness Walk, Inverness, IV3 5SQ, Scotland.

© University of the Highlands and Islands 2012

No part of this publication may be reproduced without the written permission of the University of the Highlands and Islands.

'University of the Highlands and Islands', 'UHI', their Gaelic equivalents and the UHI mountains and water device are all trademarks and/or registered trademarks of the University of the Highlands and Islands.

ISBN: 1-902393-31-7

Print code: C2-PGPROS3-12

Designed by Abby Franklin

Printed by Montgomery Litho Group

Gaelic translation by Joanne Stephen

Thank you to all students and staff who helped in the production of this prospectus.

We have made every effort to ensure that the information in this prospectus is accurate at the time of going to press. Inevitably, because of the extended lead time of prospectus production, changes to course information may occur and we will endeavour to reflect any such changes as quickly as possible on our website [www.uhi.ac.uk](http://www.uhi.ac.uk).

All photographs and images used in this prospectus are protected by copyright and may not be reproduced without permission.

This prospectus is printed on Essential Silk which is an FSC accredited material produced using Elemental Chlorine Free (ECF) pulp. This material is recyclable and biodegradable and 90% of the waste in production is recycled.



Supported by  
**The National Lottery**<sup>®</sup>  
through the Millennium Commission



# Glossary of terms

**Postgraduate Certificate (PgCert)** – To gain the award of PgCert you will complete three 20-credit, or four 15-credit modules, and if you are studying on a full-time basis you will study these modules over one semester. If you are studying part time, you may take two or more semesters to complete the PgCert.

**Postgraduate Diploma (PgDip)** – To gain the award of PgDip you must complete six or eight modules over two semesters if you are studying full time. This will take longer if you are studying part time.

**Masters (MA, MSc, MLitt, MTh, MEd)** – To gain the full Masters degree you must complete six or eight modules, plus a dissertation or other piece of work specific to the course. If you are studying full time you will normally take one year to complete the Masters degree. You can take a maximum of six years to complete your Masters if you are studying part time.

**Continuing professional development (CPD)** – You can choose to study at postgraduate level on a module-by-module basis to contribute to your continuing professional development (CPD).

At UHI you'll study in various ways, using different technologies. The blend of technologies used on your course will depend on the modules you've chosen, but it is likely that you will use some or all of the following learning resources:

**Video conference (VC)** – Using cameras and microphones, a VC can connect staff and students at two or more UHI campuses, or any other site worldwide, with the required technology.

**Audio conference (AC)** – Using traditional phone systems or web-based phone technology, an audio conference enables three or more people to share a conversation or discussion.

**Virtual learning environment (VLE)** – A web-based system that enables you to access learning resources, guidance and support, and also access and submit assessments, plus communicate with staff and other students through discussion boards or live "chat".

**Ft** Available to study full time

**F2F** Face-to-face

**Pt** Available to study part time

**VC** Video conference

**Ol** Available to study online

**AC** Audio conference

# Welcome to our campus

# Fàilte gu ar n-àrainn



**Want more information?**

Call our information line or visit our website...

0845 272 3600 | [www.uhi.ac.uk](http://www.uhi.ac.uk)

facebook twitter YouTube™