



Part-time Prospectus

2012 Entry





As Principal and Vice-Chancellor, I am delighted to welcome you to Glasgow Caledonian University, one of the UK's most dynamic and innovative universities. I hope you will find this prospectus useful in planning an exciting new chapter in your life. Part-time study has become increasingly valuable in personal and professional development and, by choosing to study at GCU, you are giving yourself a competitive edge in whichever career you choose.

Each year, 17,000 students from more than 100 countries study at Glasgow Caledonian University. Our high quality and flexible learning and teaching environment offers award-winning facilities, unique study programmes and strong links with industry and the professions. Our part-time programmes are underpinned by world-leading research excellence that delivers practical benefits to society. The University's research in health and the built environment is rated among the best in the country, in the UK top 10 and UK top 20 respectively (Research Assessment Exercise 2008).

Glasgow Caledonian University offers a wide range of undergraduate and postgraduate part-time programmes, with many flexible study options. These include the MSc in Citizenship and Human Rights, the MSc Healthcare Education and the MSc in Social Enterprise, all developed in response to demand from the sectors involved. A further good example of this is the MA in TV Fiction Writing developed in collaboration with Shed Media, now part of Warner Brothers.

The University is committed to lifelong learning, for individuals who want to keep up with developments in their field and for those entering higher education for the first time later in life, and we offer a variety of study routes to support and accommodate the demands of our students' busy lives. Our Professional Masters and Professional Doctorate courses are also in demand.

Our vibrant campus at the heart of Glasgow city centre is host to a friendly University community, and offers the multi-award winning Saltire Centre Library, leading-edge technology, modern facilities and convenient student accommodation.

Launched in September 2010, our specialist graduate University campus in Spitalfields, London, also offers a range of MBA and MSc courses, high quality teaching and links with international business. GCU London specialises in Banking and Finance, Risk Management, International Fashion Marketing, Luxury Brand Marketing, International Human Resource Management and Construction Management.

We are committed to ensuring our graduates are global citizens with bright futures, and our postgraduate programmes are designed to equip students with the skills and knowledge to excel in their careers. If you would like to further explore the opportunities available to you, please visit our website or get in touch with us. I look forward to welcoming you to our campuses in two great cities and to Glasgow Caledonian University.



Professor Pamela Gillies,
Principal and Vice-Chancellor



Glasgow Caledonian University

With our modern campus at the heart of Scotland's largest and most cosmopolitan city, GCU offers a unique learning experience with all the city has to offer on its doorstep. Formed in 1993 with the merger of the Queen's College Glasgow and Glasgow Polytechnic, we have established a strong reputation for providing relevant and forward-looking programmes. There are so many reasons for choosing to study part-time at Glasgow Caledonian.

Career-focused programmes

The vast majority of our graduates find work or further study within six months of graduating, and we offer a variety of innovative, specialised courses. The lecturers for your chosen course will have good industry contacts to help you with placements and future career opportunities.

World-class facilities

With the Saltire Centre and library at its hub, our modern, high-tech campus includes moving library shelves for easy access to books, over 500 computers, wireless internet access, 'think pods' with whiteboards for group study and private 'inflatable igloo' study areas.

Innovative teaching

With a virtual hospital, high-tech broadcasting suite, fashion factory and virtual learning environment GCULearn, we put a lot of effort into helping you enjoy your programme and gain the professional skills and knowledge employers want.

Award-winning student support

Facilities such as the Base - our one-stop information and support centre offering help with everything from borrowing laptops to getting council tax rebates - have helped us win awards for our student support, including the Times Higher Education Outstanding Support for Overseas Students award. If you are returning to education after a break, you'll find all the support and advice you'll need to help you adapt to university life.

Recognised for research

Our research in the allied health professions was placed among the top 10 universities in the UK in the 2008 Research Assessment Exercise, and our work in rehabilitation sciences was placed top in the UK. Our research in construction and the built environment was rated best in Scotland and in the top 20 in UK.

Location, location, location

Glasgow is perfect for students. It's got a vibrant live music and arts scene, jumping nightlife, accessible sports facilities, spacious city parks and much more. And it's all within easy access of Scotland's spectacular scenery and world-renowned festivals.

Friendly, close-knit, convenient campus

Our single-site campus is friendly, personal and close-knit. You'll be on first-name terms with your lecturers and the campus design makes it easy to meet friends and classmates for breaks or study sessions. Not only that, but it sits right in the middle of the city nearby all transport links - perfect for our students studying part-time.

Diverse and cosmopolitan

Glasgow Caledonian is open to anyone, regardless of nationality, age, background and schooling. That means we provide a great opportunity to meet and make friends with a diverse group of new people.

Your learning resources

We pride ourselves in offering our students award-winning support through a wide variety of services.

The Saltire Centre

Opened in 2006, and designed to support you throughout your studies, this state-of-the-art facility is home to the University library.

Described by The Guardian as “rewriting the design book for academic libraries,” our library has superb resources, with over 276,000 books as well as 37,000 e-books. It’s also somewhere that you can access 21,000 (mainly electronic) journals containing over 55 million articles. Every floor has a ‘self-issue’ and return point, or you can visit at The Base on level 0.

With over 1,800 study spaces in the Saltire Centre, you’ll find there’s always plenty of room. Part of what makes it such a good environment for study is that there are a variety of different spaces available. There are lively interaction areas that are ideal for group work, with quieter spaces as you go further up the floors of the building. It means you can always find the right space for whatever you want to do.

The library professionals make a real difference too. Whatever you plan to study, we have librarians who specialise in your subject area. These subject librarians can:

- Tell you about library services
- Help you find information for coursework and dissertations
- Show which databases to use and how to access them
- Show you how to use electronic journals and books.

Find out more at www.gcu.ac.uk/library/student-services/yourlibrary

A wide variety of services and support are available via the library website www.gcu.ac.uk/library and via the library tab in GCULearn. This includes PILOT, an online information literacy training package which shows students:

- The different types of information available
- How to search effectively
- How to evaluate the quality of the information you retrieve
- How to avoid plagiarism and understand the ethical use of information

Students can work through it at their own pace, and it is available 24-7.

The library also has software and technology to assist disabled students.

Continuing Professional Development Centre

At GCU we’re committed to continually investing in the quality of our teaching resources. The Continuing Professional Development Centre demonstrates this, ensuring we offer the best possible learning environments. The CPD opened in 2007, and it has state-of-the-art seminar rooms as well as high-tech conference spaces, which are used both by students and businesses.

Plus, on the ground floor of the CPD, you’ll find the Real Learning Café. Offering access to computers as well as food and refreshments, it provides yet another relaxed environment for study and socialising.

IT facilities

Access to IT has transformed the way we learn – and will continue to do so. That’s why there are 400 computers in Saltire Centre, as well as a wi-fi network that means you can use your own laptop, smartphone or PDA throughout the building. In addition to this, there are 300 university notebooks that are available to everyone.

If you don’t feel too confident with computers, there is support available within each School to help you with applications like Word and Excel, and show you how to use our IT facilities effectively.

Blended Learning

Blended Learning is an approach to learning and teaching which combines face-to-face sessions with the most effective use of new technology.

As soon as you register as a student, you’ll be given a dedicated email account and password for GCULearn, the University’s virtual learning environment. GCULearn is at the heart of the University’s approach to blended learning. As soon as you register as a student, you will be able to access lecture notes, accompanying materials

and discussion forums, as well as blogs, wikis and podcasting facilities which will help with your studies. You may also be encouraged to create and share your own learning resources through file-sharing sites such as YouTube, Flickr and SlideShare.

You can find out more about blended learning at GCU by visiting www.gcu.ac.uk/theuniversity/learningteaching/blendedlearning/

Research Archives and Special Collections

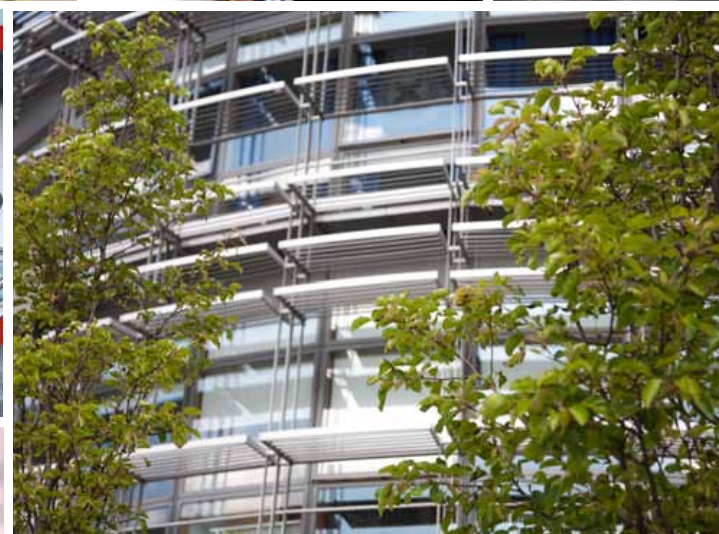
The collections that make up the Glasgow Caledonian University Research Archives and Special Collections have two main points of focus: the politics of the left, and social welfare and policy. These are brought together under the umbrella of social justice.

The Archives include the records of the University and its predecessor bodies dating back to 1875. This collection also holds deposited archives from a number of organisations including the Scottish Trades Union Congress (STUC), the Scottish Anti-Apartheid Movement and Children 1st (formerly the Royal Scottish Society for the Prevention of Cruelty to Children).

Key holdings include the Gallacher Memorial Library; the Kevin Morrison Collection; and the collection of George Johannes. Heatherbank Museum of Social Work, now closed as a gallery based museum, contains rich collections of artefacts, print materials, photographs and archives, all available for research purposes.

The Research Special Collections work closely together to develop first class service delivery for researchers across the lifelong learning spectrum – from secondary school to post-doctoral research and beyond. We also provide creative programmes of resource generation, community outreach and engagement with town and gown events.





Support

Whatever level of support you need, we offer a full range of services that can help. You'll find contact details for all of these services and more online at www.gcu.ac.uk/study/part-time

Graduate School

Established in 2004, The Graduate School brings together research students, supervisors and researchers. Set up to enhance the research experience at GCU, it provides a forum to exchange ideas.

The School also encourages collaboration on inter-disciplinary projects, lively debate on strategic issues and allows people to share good practice and experiences. By organising events like skills training workshops, seminars and training workshops, it adds a new dimension to research. And of course, there's an important social aspect too.

Academic Registry

Responsible for all matters of governance of the University, the Academic Registry deals with student records, registration, extension visas, student funding, exams, appeals and graduation.

You'll find the Academic Registry desk on the ground floor of the Saltire Centre next to The Base, or you can use the contact details provided. For queries about exams and graduation, go to the administration offices on the first floor of the George Moore building. www.gcu.ac.uk/student/academicregistry

Academic and IT support

Each School has an Academic Development Centre, where you will find that support is available to help you cope with practical aspects of your new workload, so you can best achieve your academic potential. Whether you're wondering how to take lecture notes or structure an effective essay, support staff are available to help. You can also get help and advice on using the IT facilities at your disposal.

The University's online information literacy training package, PILOT, can also be accessed by logging in to GCULearn on any computer, on or off campus. It aims to teach you the basic IT skills you need as a student at GCU. You can work through each of the units and test yourself as you go.

International Student Support Service (ISSS)

This service is available to international students even before they arrive at the University. The ISSS will support you throughout your studies, whatever your needs may be. You can get specialist advice on visas, immigration, cultural and personal issues, and there are also social activities planned throughout the year.

Faith and Belief Centre - Chaplaincy

The Faith and Belief Centre is a dedicated space on campus which offers students a place to fulfil their religious, spiritual and social wellbeing. The Centre hosts a diverse range of student groups and events throughout the week which are open to UK and international students. Some events also encourage families of students to be involved. The Centre offers quiet spaces for prayer and meditation, with washroom facilities, for both male and female students. We have eight visiting chaplains representing a wide range of beliefs. These chaplains can also put you in touch with places of worship in and around Glasgow.

Health

All students staying away from home must register with a General Practitioner. International students on full-time programmes lasting more than six weeks are eligible for treatment on the National Health Service. The NHS web-site will help you find your nearest GP. www.nhs.uk/servicedirectories

Widening Access

At GCU, we welcome students from a wide variety of different backgrounds. We encourage applications and provide opportunities in a number of different ways – for instance we work closely with many schools to raise awareness and participation.

We're also actively doing this through West Forum Projects and our award-winning Caledonian Club. In addition, to make sure the transition from college to university is as smooth as possible, we have formal links with further education colleges.

If you don't have the relevant qualifications for entry, you may be able to gain academic credit for other forms of learning via the Recognition of Prior Learning (RPL) – through work experience, for example.

Positive Living and Disability Service

GCU is committed to creating an inclusive learning environment where all students are able to participate fully in university life. The University's Positive Living and Disability Service offers invaluable information and advice to both applicants and students suffering the impact of an illness or impairment.

The Service is an accredited Needs Assessment Centre and can help students access additional services and facilities, as well as recommending necessary adjustments to teaching and assessments.

It also provides valuable support and counselling to students through troubled times, including periods of high stress, low mood, poor self esteem and relationship problems. Many students find it hugely beneficial to explore their thoughts, emotions and behaviour in a confidential counselling setting.

For students with children: Childcare

The University provides a nursery service on campus which accepts children aged between six weeks and five years old. Students can apply to place their children there on receipt of an offer of a place on a university programme. Contact the Nursery Manager directly for information about fees, availability or any other question you might have.

Breastfeeding facilities

The University supports mothers who breastfeed by providing a quiet, clean and comfortable room on the ground floor of the Hamish Wood Building. This is a private room equipped with a chair, table and fridge. Information from breastfeeding support groups and the NHS are also available and nappy disposal bins are provided. Contact the Base (Level 0 of the Saltire Centre) for more information or for access.







From student societies to student accommodation, here's a flavour of postgraduate life at GCU.

Students' Association

You can get your time at GCU off to a great start by getting involved in some of the many welcome events that take place early in the first trimester. After all, as they say in the Glasgow Caledonian University Students' Association – GCUSA – “give it a go!”

As you might expect, GCUSA is run by elected students, who work with the University to ensure everyone has the best possible experience. And they're also here to represent you, making sure that all students have a voice.

Clubs and societies

During your time here, why not join one or more of the clubs or societies available? There are over 30 in all.

These range from faith based such as the Christian Union and Caledonian University Muslim Students' Association (CUMSA) to leisure activities such as baking, music and comedy. All are run by volunteers – so why not get involved? You could even decide to start your own.

Sports

Sports clubs are organised by GCU student volunteers, and offer a diverse range of activities, from badminton to hockey, Tae Kwon Do to surfing. There's something for everyone, whether you're a keen competitor or an absolute beginner.

For a full list of all clubs and societies, and information on how to join, visit www.caledonianstudent.com/societies

Get involved

Volunteering is not only satisfying in itself – it's also a great way to meet new people and add valuable experience to your CV. At GCU you could get involved with everything from welfare volunteering to working on one of GCUSA's vibrant student media outlets; Radio Caley and 'the Edit' magazine, which are run entirely by students for students.

Facilities

The GCUSA is there for everyone. With this in mind, we recently opened a student social space with a games room and cafe, as well as a 24 hour computer “lab”.

Caledonian Student Parliament

The Student Parliament is the main platform which enables students to tell the Association what they want, and is the body that holds elected officials to account. It meets six times across the academic year.

Arc

The Arc is a superbly equipped, state-of-the-art leisure facility that everyone at GCU can make use of and enjoy.

- Exercise classes include everything from BodyPump to circuit training
- Upper gym offers light weights, indoor bikes and cross trainers
- Downstairs gym is aimed at intermediate and more advanced users
- Sports offered range from badminton to basketball
- Clubs use halls for sports ranging from fencing to karate
- Health and Beauty Treatments from sports massage to hairdressing

Car parking and transport

Car parking is limited and available by permit only, but the city centre is well served by public transport, including buses, trains and the Subway.





Further Information

Students Award Agency for Scotland

T: +44 (0)300 555 0505

W: www.student-support-saas.gov.uk

Professional and Career Development Loans

T: 0800 585 505

W: www.lifelonglearning.co.uk/cdl

Student Funding Team

E: funding@gcu.ac.uk

T: +44 (0)141 273 1376

W: www.gcu.ac.uk/student/money

ILA administrator: Moyra Templeton

E: m.templeton@gcu.ac.uk

T: +44 (0)141 331 3064

W: www.gcu.ac.uk/student/money/funds/ila

ILA Scotland

T: 0808 100 1090

W: www.ilascotland.org.uk

Application and funding

Contact: **Admissions Office** E: admissions@gcu.ac.uk T: +44(0)141 331 3334 W: www.gcu.ac.uk/study

You can apply for most of our part-time programmes online at www.gcu.ac.uk/study/applyonline.

Application

While you can apply for most of our part-time programmes online at www.gcu.ac.uk/study/applyonline, a small number of our programmes have different application procedures. Prospective students are advised to check the relevant course listing on our website for application procedures before applying.

Research

Research application forms to undertake a programme of research are available from the Graduate School: www.gcu.ac.uk/graduatecentre/students/forms. However, students wishing to undertake research should contact the relevant academic school directly in the first instance. A contact for research opportunities available in each of the schools can be found on the school web pages.

There are six Research Councils which may be able to provide support for research studies:

- Biotechnology and Biological Sciences Research Council (BBSRC)
- Engineering and Physical Sciences Research Council (EPSRC)
- Economic and Social Research Council (ESRC)
- Medical Research Council (MRC)
- Natural Environment Research Council (NERC)
- Particle Physics and Astronomy Research Council (PPARC)
- The Arts and Humanities Research Council (AHRC)

Applications may be made directly to the ESRC (information available from our Careers Service). Applications to all other Research Councils must be submitted through the appropriate academic school of the university. The Arts and Humanities Research Council (AHRC) has recently received recognition as a research council and can also be approached, for the purposes of funding postgraduate and research study.

The studentships consist of a maintenance grant, payment of approved fees and dependents' and other allowances. To be eligible for an award a candidate should normally possess at least an upper second-class Honours degree or equivalent.

Help with your fees

Depending upon your personal circumstances and the level at which you are applying study, as a part-time student you may be able to receive some support in funding your studies. Applicants are advised to visit www.gcu.ac.uk/student/money and use our online Funding Assistant to find out what help is available to you.

Alternatively, our Student Funding team can provide a wealth of information about what funding you are entitled to, offer you advice if you are in financial difficulty, help you with childcare funding, part-time student fee waivers, suitable trusts and charities. You can contact them on 0141 273 1376 or by emailing funding@gcu.ac.uk

Money Web Pages

If you have other funding questions, the Money pages on our websites may help you: www.gcu.ac.uk/student/money

European Community Programme

The mobility of students throughout the European Community is encouraged by programmes such as SOCRATES, LEONARDO and LINGUA. There are many other community support programmes including TEMPUS and The Jean Monnet Action programme. Further information is available from the Commission of the European Communities by visiting ec.europa.eu

Part-time Postgraduate SAAS awards

We have a small number of places on specific part-time postgraduate programmes that receive a fee award from SAAS. Not all students on approved courses receive funding. If you are nominated for a funded place, your offer letter will tell you how to apply.

Contact the Student Funding Team

T: 0141 273 1376 E: funding@gcu.ac.uk

Find out more about
your funding options at
[www.gcu.ac.uk/
student/money](http://www.gcu.ac.uk/student/money)

The Glasgow School for Business and Society

Apply online at: www.gcu.ac.uk/study/applyonline

Undergraduate programmes

Award and programme title	Entry requirements
BA Business	Higher Grade BBCC; A level CCC; ILC BBCC; HNC/HND in a relevant discipline. Candidates with appropriate experience may be considered through the Recognition of Prior Learn (RPL).
LLB Bachelor of Laws	Normally AABBB at Higher Grade or ABB at A level. A Level English or a minimum B grade at Higher is essential, as is Standard Grade (level 3) or GCSE Mathematics, HND in Legal Services with AA integrative assessment or Pre entry certificate or other relevant access course.
LLB Bachelor of Laws (Fast Track)	Normally 2:1 Honours or Pass degree with distinction or merit but all students are considered on an individual basis.
BA Occupational Health and Safety Management	A recognised first degree or NEBOSH National Certificate/HNC or several years in health and safety related activities or equivalent qualification.
BA Social Science	Level One: Minimum Higher Grade BBBC including English. A level CCC. HNC Social Sciences or comparable. Level Two: Normally HND Social Sciences. Level Three: Normally HND Social Sciences with BB Graded unit (min).

Postgraduate programmes

Award and programme title	Entry requirements
ACCA	HND/HNC or recognise accounting degree are given exemption which may vary according to subjects studied.
CIMA	Admissions to the examinations is limited to registered students of the institute. Applicants are required to produce evidence that he/she has passed examinations accepted as indicating a satisfactory standard of general education. In Scotland this is at least 5 passes including 3 at higher grade. Passes must be obtained in Maths and English language.
MAcc/MFin Master of Accounting and Finance (Oil and Gas)/ (Public Sector Financial Management)/(Islamic Finance)/Master of Finance	Equivalent to a UK honours degree or equivalent in financial management, actuarial studies, economics, finance, mathematics, statistics, accounting, or a related subject or holder of a final relevant qualification from a professional body.
MSc/PgD/PgC Banking, Finance and Risk Management	Applicants must hold an Honours degree in banking, actuarial studies, economics, finance, accounting and investment.
MSc Citizenship and Human Rights by Learning Contract	Normally a 2:2 Honours degree. Applicants also need to be in full or part-time employment (paid or as a regular volunteer) in a suitable organisation. Entry is also considered through Recognition of Prior Learning – formal and informal, for applicants without Honours.
MSc Economics and Statistical Analysis	Applicants must hold an undergraduate Honours degree.
MSc Employee Relations	A business related Honours degree or a relevant HND in a business area plus relevant work experience.
LLM European and International Law	Applicants should hold a first degree in law, at Honours level, awarded by a university recognised by Glasgow Caledonian University or a professional qualification in law or holders of qualifications deemed to be equivalent to either a first degree in law, at Honours level, or to a professional qualification in which a study of law constituted a major part.

* Fees listed may be for previous academic year and for illustrative purposes only. They are subject to change annually.

Mode of study	UK/EU fees*	Duration	Contact
Evening	£1,320 per year or £330 per module (2011 fees).	4 - 5 years	t: 0141 331 3334 e: undergraduate@gcu.ac.uk w: www.gcu.ac.uk/study/part-timedegrees
Evenings	£2,400 per year (2011 fees).	4 years one trimester, minimum	t: 0141 331 3334 e: undergraduate@gcu.ac.uk w: www.gcu.ac.uk/study/part-timedegrees
Evenings	£2,700 per year (2011 fees).	4 years one trimester, minimum	t: 0141 331 3334 e: undergraduate@gcu.ac.uk w: www.gcu.ac.uk/study/part-timedegrees
Once a week (Wednesday) 2pm – 8pm	£1,460 per year. £365 per module (2011 fees).	2 years	t: 0141 331 3334 e: undergraduate@gcu.ac.uk w: www.gcu.ac.uk/study/part-timedegrees
Evenings	£940 per year. £235 per module. (2011 fees). Self or employer funded. ILA eligible. www.ilascotland.org.uk	4 years one trimester, minimum	t: 0141 331 3334 e: undergraduate@gcu.ac.uk w: www.gcu.ac.uk/study/part-timedegrees

Mode of study	UK/EU fees*	Duration	Contact
Evening	Fundamental level: £500 per paper, Professional level: £550 per person (2011 fees), Employer funded.	1 - 2 years	t: 0141 331 8640 e: postgraduate@gcu.ac.uk w: www.gcu.ac.uk/study/part-timedegrees
Evening	Certificate: £440 per paper, Managerial: £500 per paper, Strategic: £550 per paper, (2011 fees). Employer funded.	1 - 2 years	t: 0141 331 8640 e: postgraduate@gcu.ac.uk w: www.gcu.ac.uk/study/part-timedegrees
Day release or Fast-track	£690 per module plus Dissertation fee (2011 fees).	2 - 3 years (fast-track 1 year)	t: 0141 331 8640 e: postgraduate@gcu.ac.uk w: www.gcu.ac.uk/study/part-timedegrees
Day release and Evenings	£2,760 per year or £690 per module (2011 fees).	1 - 2 years	t: 0141 331 8640 e: postgraduate@gcu.ac.uk w: www.gcu.ac.uk/study/part-timedegrees
Distance learning	Visit www.gcu.ac.uk/study for details.	Up to 3 years	t: 0141 331 8640 e: postgraduate@gcu.ac.uk w: www.gcu.ac.uk/study/part-timedegrees
Day release	£2,760 per year or £690 per module (2011 fees).	1 - 2 years	t: 0141 331 8640 e: postgraduate@gcu.ac.uk w: www.gcu.ac.uk/study/part-timedegrees
Day release	£2,760 per year or £690 per module (2011 fees).	1 - 2 years	t: 0141 331 8640 e: postgraduate@gcu.ac.uk w: www.gcu.ac.uk/study/part-timedegrees
Daytime	£690 per module plus Dissertation fee (2011 fees).	Diploma: 5 years, Masters: 2-3 years	t: 0141 331 8640 e: postgraduate@gcu.ac.uk w: www.gcu.ac.uk/study/part-timedegrees

The Glasgow School for Business and Society

Apply online at: www.gcu.ac.uk/study/applyonline

Postgraduate programmes

Award and programme title	Entry requirements
LLM European and International Trade Law	Applicants should hold a first degree in law, at Honours level, awarded by a university recognised by Glasgow Caledonian University or a professional qualification in law or holders of qualifications deemed to be equivalent to either a first degree in law, at Honours level, or to a professional qualification in which a study of law constituted a major part.
MSc Financial Services, Risk and Operations	Applicants would normally hold an Honours degree in financial services, insurance, banking, actuarial studies, business, management, economics, finance, accounting, investment or any financial services related subject.
MSc Global Supply Chain and Logistics Management	A business centred Honours degree and/or a postgraduate diploma or a different/ lesser qualification with relevant work experience or a different first degree with relevant work experience. Non-standard entrants will also be considered.
MSc Health History	Normally Honours degree but all students considered on an individual basis.
MSc History (Modern Scottish History)	Entry requirements candidates should normally hold an upper second honours or equivalent Degree containing History, or an overseas equivalent, but all applicants will be considered on merit. Applications are assessed on a case-by-case basis and those with relevant experience and either a professional or a sub degree qualification will also be considered.
MSc/PgC/PgD Human Resource Management	A business related Honours degree or a relevant HND in a business related area plus relevant work experience.
MSc/PgD Human Resource Management (top-up route)	A business related Honours degree or a relevant HND in a business related area plus relevant work experience. Please visit the website for further details: www.gcu.ac.uk/cbs
MSc/PgD Insurance and Risk Management	Applicants expected to have an Honours degree or a relevant professional qualification.
MSc International Banking and Finance	Applicants must hold an Honours degree in banking, actuarial studies, economics, finance, accounting and investment.
MSc International Business	A relevant UK Honours degree or Graduate Diploma or equivalent from a recognised overseas institution. Candidates without prior study in a discipline of relevance to Business or Management will be admitted if they are judged able to benefit from the programme of study.
LLM International Business Law	Applicants should hold a first degree in law, at Honours level, awarded by a university recognised by Glasgow Caledonian University or a professional qualification in law or holders of qualifications deemed to be equivalent to either a first degree in law, at Honours level, or to a professional qualification in which a study of law constituted a major part.
LLM International Contracting	Applicants should hold a first degree in law, at Honours level, awarded by a university recognised by Glasgow Caledonian University or a professional qualification in law or holders of qualifications deemed to be equivalent to either a first degree in law, at Honours level, or to a professional qualification in which a study of law constituted a major part.
MSc International Events Management	As the programme is in a specialist area, applicants are likely to hold an Honours degree in a Cognate area e.g. sports management, events management. Alternatively to have any first degree and significant professional experience in the events sector.
MSc/PgC/PgD International Tourism Management	An undergraduate Honours degree an advantage but not essential if candidate possess suitable and relevant experience.

Mode of study	UK/EU fees*	Duration	Contact
Daytime	£690 per module plus Dissertation fee (2011 fees).	Diploma: 6 years, Masters: 2-3 years	t: 0141 331 8640 e: postgraduate@gcu.ac.uk w: www.gcu.ac.uk/study/part-timedegrees
Distance learning	£690 per module plus Dissertation fee (2011 fees). Employer funded.	1 - 2 years	t: 0141 331 8640 e: postgraduate@gcu.ac.uk w: www.gcu.ac.uk/study/part-timedegrees
Day release only	£690 per module plus Dissertation fee (2011 fees).	1 - 2 years	t: 0141 331 8640 e: postgraduate@gcu.ac.uk w: www.gcu.ac.uk/study/part-timedegrees
Evenings	£1,555 plus Dissertation fee (2011 fees).	Diploma: 2 years, Masters: 2-3 years	t: 0141 331 8640 e: postgraduate@gcu.ac.uk w: www.gcu.ac.uk/study/part-timedegrees
Distance Learning	Visit www.gcu.ac.uk/study for details.	Contact school for details.	t: 0141 331 8640 e: postgraduate@gcu.ac.uk w: www.gcu.ac.uk/study/part-timedegrees
Evening	Visit www.gcu.ac.uk/study for details.	1 - 2 years	t: 0141 331 8640 e: postgraduate@gcu.ac.uk w: www.gcu.ac.uk/study/part-timedegrees
Evening	Visit www.gcu.ac.uk/study for details.	1 - 2 years	t: 0141 331 8640 e: postgraduate@gcu.ac.uk w: www.gcu.ac.uk/study/part-timedegrees
Distance-Learning	£690 per module plus Dissertation fee (2011 fees).	1-2 years	t: 0141 331 8640 e: postgraduate@gcu.ac.uk w: www.gcu.ac.uk/study/part-timedegrees
Day Release	£690 per module plus Dissertation fee (2011 fees).	1-2 years	t: 0141 331 8640 e: postgraduate@gcu.ac.uk w: www.gcu.ac.uk/study/part-timedegrees
Day release only	£690 per module plus Dissertation fee (2011 fees).	1 - 2 years	t: 0141 331 8640 e: postgraduate@gcu.ac.uk w: www.gcu.ac.uk/study/part-timedegrees
Daytime	£690 per module plus Dissertation fee (2011 fees).	Diploma: 2 years, Masters: 2-3 years (2011 fees).	t: 0141 331 8640 e: postgraduate@gcu.ac.uk w: www.gcu.ac.uk/study/part-timedegrees
Daytime	£690 per module plus Dissertation fee (2011 fees).	Diploma: 4 years, Masters: 2-3 years (2011 fees).	t: 0141 331 8640 e: postgraduate@gcu.ac.uk w: www.gcu.ac.uk/study/part-timedegrees
Day Release/Evenings	£2,760 per academic year (£690 per module) plus Dissertation fee. (2011 fees). Employer funded.	1-2 years	t: 0141 331 8640 e: postgraduate@gcu.ac.uk w: www.gcu.ac.uk/study/part-timedegrees
Day Release	£2,760 per academic year (£690 per module) plus Dissertation fee. (2011 fees). Employer funded.	1-2 years	t: 0141 331 8640 e: postgraduate@gcu.ac.uk w: www.gcu.ac.uk/study/part-timedegrees

The Glasgow School for Business and Society

Apply online at: www.gcu.ac.uk/study/howtoapply

Award and Programme Title	Entry Requirements
MSc Management	An Honours degree or a different/lesser qualification with relevant work. Non-standard entrants will also be considered.
MSc Management and Information Governance	An Honours degree or a different/lesser qualification with relevant work. Non-standard entrants will also be considered.
MSc Management of IT Innovation	A business/management or computing science/information systems related Honours degree or equivalent. Non-standard entrants will also be considered.
MBA Master of Business Administration	Applicants expected to have an Honours degree or professional qualification. With a minimum of three years related managerial experience.
MSc Operations and Business Management	An Honours degree or a different/lesser qualification with relevant work. Non-standard entrants will also be considered.
MSc/PgC/PgD Organisational Coaching	A business related Honours degree. Relevant HND in a business area plus relevant work experience.
MSc/PgC/PgD Organisational and Human Resource Management	A business related Honours degree or a relevant HND in a business related area plus relevant work experience. Please visit the website for further details: www.gcu.ac.uk/cbs
MSc/PgD Risk Management	Applicants expected to have an Honours degree or a relevant professional qualification.
MSc/PgC/PgD Social Enterprise	An undergraduate Honours degree or equivalent or related work experience at an advanced level.
MA Television Fiction Writing	Applicants should normally have a good undergraduate Honours degree in a relevant discipline. Non standard entry qualifications will be considered.
MRes Master of Research	Applicants expected to have an Honours degree or professional qualification. Candidates will be asked to submit a research proposal and be interviewed.
DBA/DMan Doctorate of Business Administration/Doctorate of Management	Applicants expected to have an Honours degree or professional qualification. With a minimum of five years related professional experience.

Mode of Study	UK/EU fees*	Duration	Contact
Day Release	£690 per module plus Dissertation fee (2011 fees).	1-2 years	t: 0141 331 8640 e: postgraduate@gcu.ac.uk w: www.gcu.ac.uk/study/part-timedegrees
Day Releasea	£690 per module plus Dissertation fee (2011 fees).	1-2 years	t: 0141 331 8640 e: postgraduate@gcu.ac.uk w: www.gcu.ac.uk/study/part-timedegrees
Day Release	£690 per module (2011 fees).	1-2 years	t: 0141 331 8640 e: postgraduate@gcu.ac.uk w: www.gcu.ac.uk/study/part-timedegrees
Day Release/Evening	£1,100 per module (2011 fees).	3-6 years	t: 0141 331 8640 e: postgraduate@gcu.ac.uk w: www.gcu.ac.uk/study/part-timedegrees
Day Release	£690 per module plus Dissertation fee (2011 fees).	1-2 years	t: 0141 331 8640 e: postgraduate@gcu.ac.uk w: www.gcu.ac.uk/study/part-timedegrees
Work-based learning	Visit www.gcu.ac.uk/study for details.	1-2 years	t: 0141 331 8640 e: postgraduate@gcu.ac.uk w: www.gcu.ac.uk/study/part-timedegrees
Day Release	Visit www.gcu.ac.uk/study for details.	1-2 years	t: 0141 331 8640 e: postgraduate@gcu.ac.uk w: www.gcu.ac.uk/study/part-timedegrees
Distance-Learning	£690 per module plus Dissertation fee (2011 fees).	1-2 years	t: 0141 331 8640 e: postgraduate@gcu.ac.uk w: www.gcu.ac.uk/study/part-timedegrees
3 weekends per year	Masters: £3,000 Diploma: £2,090 Certificate: £2,090 (2011 fees)	1 year	t: 0141 331 8640 e: postgraduate@gcu.ac.uk w: www.gcu.ac.uk/study/part-timedegrees
Day Release	Visit www.gcu.ac.uk/study for details.	1-2 years	t: 0141 331 8640 e: postgraduate@gcu.ac.uk w: www.gcu.ac.uk/study/part-timedegrees
Part-time	Visit www.gcu.ac.uk/study for details.	1-2 years	t: 0141 331 8640 e: postgraduate@gcu.ac.uk w: www.gcu.ac.uk/study/part-timedegrees
Day Release	Visit www.gcu.ac.uk/study for details.	3-6 years	t: 0141 331 8640 e: postgraduate@gcu.ac.uk w: www.gcu.ac.uk/study/part-timedegrees

School of Engineering and the Built Environment

Apply online at: www.gcu.ac.uk/study/applyonline

Undergraduate programmes

Award and programme title	Entry requirements
BSc/BEng (Hons) Building Services Engineering	Applicants should have an HN qualification and be employed in relevant industry sector.
BSc (Hons) Building Surveying	Applicants should have an HN qualification and be employed in relevant industry sector.
BSc (Hons) Construction Management	Applicants should have an HN qualification and be employed in relevant industry sector.
BSc (Hons) Construction Management (Blended Learning)	Applicants should have an HN qualification and be employed in relevant industry sector.
BEng (Hons) Digital Systems Engineering	HN qualification and relevant work experience
BEng (Hons) Electronic Engineering	HN qualification and relevant work experience
BEng (Hons) Electrical Power Engineering	HN qualification and relevant work experience
BSc (Hons) Environmental Civil Engineering	Applicants should have an HN qualification and be employed in relevant industry sector. Applicants with over 5 years of professional/work experience will also be considered.
BSc (Hons) Fire Risk Engineering	Applicants should have an HN qualification and be employed in relevant industry sector.
BEng (Hons) Instrumentation Systems Engineering	HN qualification and relevant work experience
BEng (Hons) Mechanical Electronic Systems Engineering	HN qualification and relevant work experience. HNC in an Engineering discipline will be considered for entry. Advanced entry may be considered for students who hold HND qualifications based on the content of their programme of study and evidence of level of achievement. It is a condition of part-time entry that students are in full-time employment, working within a relevant discipline at a level compatible with the level of study.
BEng (Hons) Network and Communication Engineering	HN qualification and relevant work experience
BSc (Hons) Property Management and Valuation	Applicants should have an HN qualification and be employed in relevant industry sector.
BSc (Hons) Quantity Surveying	Applicants should have an HN qualification and be employed in relevant industry sector.
BEng (Hons) Robotic and Mechatronic Systems Engineering	HN qualification and relevant work experience

* Fees listed may be for previous academic year and for illustrative purposes only. They are subject to change annually.

Mode of study	UK/EU fees*	Duration	Contact
Day Release	Year 1 - £2200 Year 2, 3 and 4 - £2150 Year 5 - £2100 (2011 fees)	5 years, however previous experience will be taken into account and in some instances students may enter in year 2 of study.	t: 0141 331 3334 e: undergraduate@gcu.ac.uk w: www.gcu.ac.uk/study/part-timedegrees
Day Release	Year 1 - £2200 Year 2, 3 and 4 - £2150 Year 5 - £2100 (2011 fees)	5 years, however previous experience will be taken into account and in some instances students may enter in year 2 of study.	t: 0141 331 3334 e: undergraduate@gcu.ac.uk w: www.gcu.ac.uk/study/part-timedegrees
Day Release	Year 1 - £2200 Year 2, 3 and 4 - £2150 Year 5 - £2100 (2011 fees)	5 years, however previous experience will be taken into account and in some instances students may enter in year 2 of study.	t: 0141 331 3334 e: undergraduate@gcu.ac.uk w: www.gcu.ac.uk/study/part-timedegrees
Blended Learning	£3000 per year or £550 per module (2011 fees)	5 years, however previous experience will be taken into account and in some instances students may enter in year 2 of study.	t: 0141 331 3334 e: undergraduate@gcu.ac.uk w: www.gcu.ac.uk/study/part-timedegrees
Day release	£1,400 per year (2011 fees)	4 years	t: 0141 331 3334 e: undergraduate@gcu.ac.uk w: www.gcu.ac.uk/study/part-timedegrees
Day release	£1,400 per year (2011 fees)	4 years	t: 0141 331 3334 e: undergraduate@gcu.ac.uk w: www.gcu.ac.uk/study/part-timedegrees
Day release	£1,400 per year (2011 fees)	4 years	t: 0141 331 3334 e: undergraduate@gcu.ac.uk w: www.gcu.ac.uk/study/part-timedegrees
Day Release	Year 1 - £2200 Year 2, 3 and 4 - £2150 Year 5 - £2100 (2011 fees)	5 years, however previous experience will be taken into account and in some instances students may enter in year 2 of study.	t: 0141 331 3334 e: undergraduate@gcu.ac.uk w: www.gcu.ac.uk/study/part-timedegrees
Day Release	Year 1 - £2200 Year 2, 3 and 4 - £2150 Year 5 - £2100 (2011 fees)	5 years, however previous experience will be taken into account and in some instances students may enter in year 2 of study.	t: 0141 331 3334 e: undergraduate@gcu.ac.uk w: www.gcu.ac.uk/study/part-timedegrees
Day release	£1,400 per year (2011 fees)	4 years	t: 0141 331 3334 e: undergraduate@gcu.ac.uk w: www.gcu.ac.uk/study/part-timedegrees
Day release	£1,400 per year (2011 fees)	4 years	t: 0141 331 3334 e: undergraduate@gcu.ac.uk w: www.gcu.ac.uk/study/part-timedegrees
Day release	£1,400 per year (2011 fees)	4 years	t: 0141 331 3334 e: undergraduate@gcu.ac.uk w: www.gcu.ac.uk/study/part-timedegrees
Day Release	Year 1 - £2200 Year 2, 3 and 4 - £2150 Year 5 - £2100 (2011 fees)	5 years, however previous experience will be taken into account and in some instances students may enter in year 2 of study.	t: 0141 331 3334 e: undergraduate@gcu.ac.uk w: www.gcu.ac.uk/study/part-timedegrees
Day Release	Year 1 - £2200 Year 2, 3 and 4 - £2150 Year 5 - £2100 (2011 fees)	5 years, however previous experience will be taken into account and in some instances students may enter in year 2 of study.	t: 0141 331 3334 e: undergraduate@gcu.ac.uk w: www.gcu.ac.uk/study/part-timedegrees
Day Release	£1,400 per year (2011 fees)	4 years	t: 0141 331 3334 e: undergraduate@gcu.ac.uk w: www.gcu.ac.uk/study/part-timedegrees

School of Engineering and the Built Environment

Apply online at: www.gcu.ac.uk/study/applyonline

Postgraduate programmes

Award and programme title	Entry requirements
MA/PgD 3D Design for Virtual Environments	Honours degree or equivalent in an appropriate discipline, ideally in an arts based subject. Candidates with appropriate experience may be considered through the Recognition of Prior Learning (RPL).
MSc/PgD Advanced Computer Networking	Honours degree or advanced qualification in Computer Science. Candidates with appropriate experience may be considered through the Recognition of Prior Learning (RPL).
MSc/PgD Advanced Computing (specialist streams in Mobile Application Development and Web Systems Development)	Honours degree or advanced qualification in Computer Science. Candidates with appropriate experience may be considered through the Recognition of Prior Learning (RPL).
MSc/PgD Applied Instrumentation and Control	Honours degree in relevant science or engineering subject. Candidates with appropriate experience may be considered through the Recognition of Prior Learning (RPL).
MSc Building Services Engineering	The programme is designed to accept Honours degree graduates (2:2 and above) or equivalent in any discipline associated with building services engineering, mechanical engineering or energy-related studies. Applicants with appropriate professional experience may be considered on individual merit.
MSc Construction Economics (Available to study at GCU London only)	The programme is designed to accept Honours degree graduates (2:2 or above) or equivalent from a wide range of disciplines. Applicants with appropriate professional experience may be considered on individual merit.
MSc Construction Management	The programme is designed to accept Honours degree graduates (2:2 and above) or equivalent in any discipline associated with construction or property. Applicants with appropriate professional or Corporate Membership of a construction or property-related professional body will also be considered.
MA/PgD Design Practice Management	Honours degree at 2:1 level in a creative or business discipline or equivalent. Candidates with appropriate experience may be considered through the Recognition of Prior Learning (RPL).
MSc Energy and Environmental Management	The programme is designed to accept Honours degree graduates (2:2 and above) from a wide range of relevant disciplines. Applicants with appropriate professional experience may be considered on individual merit, and progress to MSc depending on their performance in programme modules.
MSc International Project Management	The programme is designed to accept Honours degree graduates (2:2 or above) or equivalent from a wide range of disciplines. Applicants with appropriate professional experience may be considered on individual merit.
MSc/PgD Maintenance Management	Honours degree in an engineering or science subject. Candidates with appropriate experience maybe considered through the Recognition of Prior Learning (RPL).
MSc/PgD Mechanical Engineering (with options in Design or Manufacture)	BEng (Hons) degree. Candidates with appropriate experience may be considered through the Recognition of Prior Learning (RPL).
MSc/PgD Network Security	Honours degree or advanced qualification in Computer Science or cognate discipline. Candidates with appropriate experience may be considered through the Recognition of Prior Learning (RPL).
MSc/PgD .NET Web Systems Development	Honours degree or advanced qualification in Computer Science or cognate discipline. Candidates with appropriate experience may be considered through the Recognition of Prior Learning (RPL).
MSc/PgD Particulate Solids Handling	Applicants should be employed in industry in a subject related to Particulate Solids Handling, will normally be at least 21 years of age at the start of the programme and should have an Honours Degree from a UK institution or equivalent in the areas of science or engineering subject.

* Fees listed may be for previous academic year and for illustrative purposes only. They are subject to change annually.

Mode of study	UK/EU fees*	Duration	Contact
Part-time	£2,320 per year or £580 per module. (2011 fees)	2 years	t: 0141 331 8640 e: postgraduate@gcu.ac.uk w: www.gcu.ac.uk/study/part-timedegrees
Day release	£2,760 per year or £690 per module. (2011 fees)	2-3 years	t: 0141 331 8640 e: postgraduate@gcu.ac.uk w: www.gcu.ac.uk/study/part-timedegrees
Day release	£2,320 per year or £580 per module. (2011 fees)	2-3 years	t: 0141 331 8640 e: postgraduate@gcu.ac.uk w: www.gcu.ac.uk/study/part-timedegrees
Block release or distance learning	£2,320 per year or £580 per module. (2011 fees)	2-3 years	t: 0141 331 8640 e: postgraduate@gcu.ac.uk w: www.gcu.ac.uk/study/part-timedegrees
Part-time	£2800 per year (2011 fees)	2 years	t: 0141 331 8640 e: postgraduate@gcu.ac.uk w: www.gcu.ac.uk/study/part-timedegrees
Part-time / Distance-Learning	£2800 per year (£750 per module distance learning) (2011 fees)	2 years 5 years distance learning	t: 0141 331 8640 e: postgraduate@gcu.ac.uk w: www.gcu.ac.uk/study/part-timedegrees
Part-time / Distance-Learning	£2800 per year (£750 per module distance learning) (2011 fees)	2 years 5 years distance learning	t: 0141 331 8640 e: postgraduate@gcu.ac.uk w: www.gcu.ac.uk/study/part-timedegrees
Part-time	£2,320 per year or £580 per module. (2011 fees)	2 years	t: 0141 331 8640 e: postgraduate@gcu.ac.uk w: www.gcu.ac.uk/study/part-timedegrees
Part-time	£2800 per year (2011 fees)	2 years	t: 0141 331 8640 e: postgraduate@gcu.ac.uk w: www.gcu.ac.uk/study/part-timedegrees
Part-time / Distance-Learning	£2800 per year (£750 per module distance learning) (2011 fees)	2 years 5 years distance learning	t: 0141 331 8640 e: postgraduate@gcu.ac.uk w: www.gcu.ac.uk/study/part-timedegrees
Block release or distance learning	£2,320 per year or £580 per module. (2011 fees)	2-3 years	t: 0141 331 8640 e: postgraduate@gcu.ac.uk w: www.gcu.ac.uk/study/part-timedegrees
Block release or distance learning	£2,320 per year or £580 per module. (2011 fees)	2-3 years	t: 0141 331 8640 e: postgraduate@gcu.ac.uk w: www.gcu.ac.uk/study/part-timedegrees
Day release	£2,320 per year or £580 per module. (2011 fees)	2-3 years	t: 0141 331 8640 e: postgraduate@gcu.ac.uk w: www.gcu.ac.uk/study/part-timedegrees
Evenings	£2,000 per year or £500 per module. (2011 fees)	1-2 years	t: 0141 331 8640 e: postgraduate@gcu.ac.uk w: www.gcu.ac.uk/study/part-timedegrees
Day release	£2,320 per year or £580 per module (2011 fees)	2½ years (approx)	t: 0141 331 8640 e: postgraduate@gcu.ac.uk w: www.gcu.ac.uk/study/part-timedegrees

School of Engineering and the Built Environment

Apply online at: www.gcu.ac.uk/study/applyonline

Postgraduate programmes

Award and programme title	Entry requirements
MSc Quantity Surveying	The programme is intended to be accessible to applicants from a wide range of backgrounds. The normal entry qualification is an Honours degree (2:2 and above) or an equivalent overseas qualification. Applicants with appropriate professional experience are also considered. It is expected that part-time and distance-learning students would be in employment in a post relevant to the content of the degree.
MSc Sustainable Energy Technology	The programme is designed to accept Honours degree graduates (2:2 and above) or equivalent in any discipline associated with engineering, physics or other technical subjects. Applicants with appropriate professional experience within a technical or energy-related role may be considered on individual merit.
MSc/PgD Voice-over IP and Unified Communications	Honours degree or advanced qualification in Computer Science or cognate discipline from a British university or recognised overseas institution, or industrialexperience in Computer Networking and an Honours degree. Candidates with appropriate experience may be considered through the Recognition of Prior Learning (RPL).
MSc Waste Management	The programme is designed to accept Honours degree graduates (2:2 and above) from a wide range of relevant disciplines. Applicants with appropriate professional experience may be considered on individual merit, and progress to MSc depending on their performance in programme modules.
MSc/PgD Wireless Communication Technologies	Honours degree in relevant science or engineering subject; Candidates with appropriate experience may be considered through the Recognition of Prior Learning (RPL).
MSc/PgD Wireless Networking	Honours degree or advanced qualification in Computer Science or cognate discipline; Candidates with appropriate experience may be considered through the Recognition of Prior Learning (RPL).

School of Health and Life Sciences

Apply online at: www.gcu.ac.uk/study/applyonline

Undergraduate programmes

Award and programme title	Entry requirements
BSc Biomedical Science	Higher Grade: BBBC; HNC/HND with 2/1 Bs in Graded Units.
BSc Biomedical Science (BIOP)	IBMS assessment of academic qualification for the award of Certificate of Competence.
BSc (Hons) Clinical Physiology	Higher Grade: BBC/BCCC; A level: DDD; Mathematics (S) or Physics (S) at Credit Int. 2 minimum; Additional Requirement for entry: Employment in an NHS Clinical Physiology department is an essential entry requirement.
BSc (Hons) Health Studies	Normally a first degree and experience in a health related field.
BSc Health Studies	Scottish Highers: BBBC or BBBH in one sitting. Applicants must have achieved English Higher. Applicants with HNC/HND/Access programme qualifications may also be considered for direct entry to the programme. Contact Admissions for details.

* Fees listed may be for previous academic year and for illustrative purposes only. They are subject to change annually.

Mode of study	UK/EU fees*	Duration	Contact
Part-time / Distance-Learning	£2800 per year (£750 per module distance learning) (2011 fees)	2 years 5 years distance learning	t: 0141 331 8640 e: postgraduate@gcu.ac.uk w: www.gcu.ac.uk/study/part-timedegrees
Part-time	£2800 per year (2011 fees)	2 years	t: 0141 331 8640 e: postgraduate@gcu.ac.uk w: www.gcu.ac.uk/study/part-timedegrees
Part-time	Contact Admissions	PgD: 2 years + 3 months to MSc (approx)	t: 0141 331 8640 e: postgraduate@gcu.ac.uk w: www.gcu.ac.uk/study/part-timedegrees
Part-time	£2800 per year (2011 fees)	2 years	t: 0141 331 8640 e: postgraduate@gcu.ac.uk w: www.gcu.ac.uk/study/part-timedegrees
Day release	£2,760 per year or £690 per module (2011 fees)	2-3 years	t: 0141 331 8640 e: postgraduate@gcu.ac.uk w: www.gcu.ac.uk/study/part-timedegrees
Day release	£2,760 per year or £690 per module (2011 fees)	2-3 years	t: 0141 331 8640 e: postgraduate@gcu.ac.uk w: www.gcu.ac.uk/study/part-timedegrees

Mode of study	UK/EU fees*	Duration	Contact
Day	Self or employer funded. £1,320 per years, £330 per module (2011 fees).	Dependant on the number of modules student advised to undertake	t: 0141 331 3334 e: undergraduate@gcu.ac.uk w: www.gcu.ac.uk/study/part-timedegrees
Day	Self or employer funded	Dependant on the number of modules student advised to undertake	t: 0141 331 3334 e: undergraduate@gcu.ac.uk w: www.gcu.ac.uk/study/part-timedegrees
Day	£3,315 per years (2011 fees). Students undertaking individual modules will be charged per module.	4 years	t: 0141 331 3334 e: undergraduate@gcu.ac.uk w: www.gcu.ac.uk/study/part-timedegrees
Day Release	Fees variable depending on modules selected.	2 - 5 years	t: 0141 331 3334 e: undergraduate@gcu.ac.uk w: www.gcu.ac.uk/study/part-timedegrees
Day Release	Fees variable depending on modules selected.	2 - 5 years	t: 0141 331 3334 e: undergraduate@gcu.ac.uk w: www.gcu.ac.uk/study/part-timedegrees

School of Health and Life Sciences

Apply online at: www.gcu.ac.uk/study/applyonline

Undergraduate programmes

Award and programme title	Entry requirements
BSc (Hons) Physiotherapy	A minimum of 300 UCAS points from one exam sitting, or 400 UCAS points from two sittings. This equates to four Bs and one C at Scottish Higher, three Bs at A level or five B2s in Irish Leaving certificate. Essential Subjects: English (H, GCSE or Irish Leaving Certificate (Hons) level) plus three science subjects, at least two of which should be at higher / Irish Leaving Certificate (Hons) level or one at A level. Applicants must be 17 years by 31st August in the year of entry to the programme.
BSc/BSc (Hons) Professional Development	Candidates will normally possess 240 SHE (SCQF 7, 8 & 9 point). A number of SHE level 2 / level 8 modules are offered to provide applicants with an appropriate mechanism to facilitate entry to programme.
BSc Psychology	Higher Grade: AAA/BBBC; A level: BCC; ILC BBBC; HNC with a graded unit B.

Postgraduate programmes

Award and programme title	Entry requirements
MSc Advancing Practice in Primary Care	UK Registered Health Care Professional with a minimum of 3 years post qualifying experience. Currently working within the context of advanced, Practice in Primary Care/Community setting. Normally Honours degree.
MSc Biomedical Science	Candidates must hold a BSc(Hons) Biomedical Science or BSc(Hons) in a biological science subject plus additional study as determined on application to the Registration Unit of the Institute of Biomedical Science (IBMS). Candidates should also be employed as a Biomedical Scientist in a clinical laboratory.
MSc Clinical Nutrition and Health	Honours degree or equivalent in a medicine/health profession/nutrition/food science subject including evidence of human physiology and biochemistry at level 3 or above.
MSc Community Health	Honours degree or equivalent. Relevant professional qualification.
D.Psych Counselling Psychology	Candidates must hold a good first degree in Psychology, granting them Graduate Basis for Chartership (GBC) with the British Psychology Society. They must also demonstrate experience in a caring role and personal maturity.
MSc Diabetes Care and Management	Honours degree 2.ii or above or NHS Institute or other appropriate qualification with Recognised Prior Learning (RPL). Applicants must normally be registered Health Care Professionals.
MSc Forensic Psychology/Psychology In Forensic Settings	Candidates should hold 2.1 or above Honours Degree in psychology recognised by the BPS as providing the Graduate Basis for Chartership (GBC). Note: this entry requirement of GBC only applies to MSc Forensic Psychology. It is also preferred for candidates to have gained work experience, either voluntary or paid, in the forensic field. Candidates for MSc Psychology in Forensic Settings should provide evidence at interview of a sound understanding of psychological principles and research knowledge and skills.
MSc Health and Social Care (Cardiac Rehabilitation)	The programme is open to Physiotherapists who hold an Honours degree or for those with unclassified degrees or professional diplomas there will usually be a requirement to have at least two years professional experience prior to application.
MSc Health and Social Care (Diagnostic Imaging)	The programme is open to HPC Registered Radiographers who hold an Honours degree. Applicants with unclassified degrees or professional diplomas should have at least two years professional experience prior to application. Individual modules may be undertaken by appropriately qualified healthcare professionals.

Mode of study	UK/EU fees*	Duration	Contact
Day	Fees variable depending on modules selected.	2 - 5 years	t: 0141 331 3334 e: undergraduate@gcu.ac.uk w: www.gcu.ac.uk/study/part-timedegrees
Day / Evening	Fees variable depending on modules selected.	Up to 4 years	t: 0141 331 3334 e: undergraduate@gcu.ac.uk w: www.gcu.ac.uk/study/part-timedegrees
Day and Evening	Self or employer funded. £1,320 per year (2011 fees). £330 per module.	4-5 years dependant upon number of modules undertaken each trimester.	t: 0141 331 3334 e: undergraduate@gcu.ac.uk w: www.gcu.ac.uk/study/part-timedegrees

Mode of study	UK/EU fees*	Duration	Contact
Day/Evening	Self or employer funded. Fees variable depending on modules selected.	2 - 5 years	t: 0141 331 8640 e: postgraduate@gcu.ac.uk w: www.gcu.ac.uk/study/part-timedegrees
Day Release	£1,560 per year or £390 per module (2011 fees).	Up to 3 years	t: 0141 331 8640 e: postgraduate@gcu.ac.uk w: www.gcu.ac.uk/study/part-timedegrees
Contact us for details	Visit www.gcu.ac.uk/study for details.	Up to 3 years	t: 0141 331 8640 e: postgraduate@gcu.ac.uk w: www.gcu.ac.uk/study/part-timedegrees
Online / Day	Fees variable depending on modules selected. Typically £390 per module (2011 fees). Self or employer funded.	2 - 5 years	t: 0141 331 8640 e: postgraduate@gcu.ac.uk w: www.gcu.ac.uk/study/part-timedegrees
Day Release	£3,480 per year or £870 per module (2011 fees).	5 years	t: 0141 331 8640 e: postgraduate@gcu.ac.uk w: www.gcu.ac.uk/study/part-timedegrees
Day Release	£2320 per year or £580 per module (2011 fees). Self or employer funded.	Up to 3 years	t: 0141 331 8640 e: postgraduate@gcu.ac.uk w: www.gcu.ac.uk/study/part-timedegrees
Day Release	£1,880 per year or £470 per module plus Dissertation fee (2011 fees).	Up to 3 years	t: 0141 331 8640 e: postgraduate@gcu.ac.uk w: www.gcu.ac.uk/study/part-timedegrees
Block day release	Fees variable depending on modules selected. Typically £435 per module (2011 fees). Self or employer funded.	2 - 6 years with early exit points at PgC/PgD level	t: 0141 331 8640 e: postgraduate@gcu.ac.uk w: www.gcu.ac.uk/study/part-timedegrees
Block day release	Fees variable depending on modules selected. Typically £435 per module (2011 fees). Self or employer funded.	3 - 6 years with early exit points at PgC/PgD level	t: 0141 331 8640 e: postgraduate@gcu.ac.uk w: www.gcu.ac.uk/study/part-timedegrees

School of Health and Life Sciences

Apply online at: www.gcu.ac.uk/study/applyonline

Postgraduate programmes

Award and programme title	Entry requirements
MSc Health and Social Care (Evidence Based Practice)	UK Occupational Therapy Honours degree 1st or 2nd class or equivalent. Unclassified Occupational Therapy degree or professional diploma, normally with at least two years of professional work experience.
MSc Health and Social Care (Employment Rehabilitation)	This programme is open to relevant health professionals with an Honours degree 1st or 2nd class or equivalent. Unclassified degrees or professional diplomas, normally with at least two years of professional work experience.
MSc Health and Social Care (Falls Prevention)	UK Occupational Therapy Honours degree 1st or 2nd class or equivalent. Unclassified Occupational Therapy degree or professional diploma, normally with at least two years of professional work experience.
MSc Health and Social Care (Leadership in Practice Learning, Social Services)	The programme is open to those who hold an Honours degree. Those with unclassified degrees or professional diplomas should have at least two years professional experience prior to application.
MSc Health and Social Care (Medical Ultrasound)	The Medical Ultrasound programme is open to candidates with a 1st degree in a health-related profession. Applicants normally should have been in postqualification practice for a minimum of 2 years and have negotiated a clinical placement unit and appropriately qualified practice educator to support them during the learning period (normally at least one month supervised experience in ultrasound practice [17.5 hours per week is recommended] immediately prior to commencement of the programme).
PgC Health and Social Care (MRI Magnetic Resonance Imaging)	HPC Registered Radiographer (Diagnostic/Therapy) or other appropriately qualified Health Care Professional.
MSc Health and Social Care (Musculoskeletal Physiotherapy)	The programme is open to Physiotherapists who hold an Honours degree or for those with unclassified degrees or professional diplomas there will usually be a requirement to have at least two years professional experience prior to application. This programme requires that physiotherapists are working in a musculoskeletal area for at least 6 hours per week.
MSc Health and Social Care (Occupational Therapy)	UK Occupational Therapy Honours degree 1st or 2nd class or equivalent. Unclassified Occupational Therapy degree or professional diploma, normally with at least two years of professional work experience.
MSc Health and Social Care (Partnership working)	Health and social care professionals from a variety of settings and working with different client groups are eligible to participate in the programme. The programme organiser reserves the right to maintain a balance in the allocation of places on the programme between health and social care professionals.
MSc Health and Social Care (Physiotherapy)	The programme is open to Physiotherapists who hold an Honours degree or for those with unclassified degrees or professional diplomas there will usually be a requirement to have at least two years professional experience prior to application
PgC Health and Social Care (Podiatric Diabetology)	HPC Registered Chiropodist/Podiatrist. Honours degree preferred but consideration is given to those holding unclassified degrees or professional diplomas provided they have at least 1 year of professional work experience. (Newly qualified practitioners with no professional work experience should have a 2:1 Honours degree or above).
PgC Health and Social Care (Podiatric Neurovascular Studies)	HPC Registered Chiropodist/Podiatrist. Honours degree preferred but consideration is given to those holding unclassified degrees or professional diplomas provided they have at least 1 year of professional work experience. (Newly qualified practitioners with no professional work experience should have a 2:1 Honours degree or above).

* Fees listed may be for previous academic year and for illustrative purposes only. They are subject to change annually.

Mode of study	UK/EU fees*	Duration	Contact
Block day release	Fees variable depending on modules selected. Typically £435 per module (2011 fees). Self or employer funded.	Up to 6 years	t: 0141 331 8640 e: postgraduate@gcu.ac.uk w: www.gcu.ac.uk/study/part-timedegrees
Block day release	Fees variable depending on modules selected. Typically £435 per module (2011 fees). Self or employer funded.	2 - 6 years with early exit points at PgC/PgD level	t: 0141 331 8640 e: postgraduate@gcu.ac.uk w: www.gcu.ac.uk/study/part-timedegrees
Block day release	Fees variable depending on modules selected. Typically £435 per module (2011 fees). Self or employer funded.	2 - 6 years with early exit points at PgC/PgD level	t: 0141 331 8640 e: postgraduate@gcu.ac.uk w: www.gcu.ac.uk/study/part-timedegrees
Block day release	Fees variable depending on modules selected. Typically £435 per module (2011 fees). Self or employer funded.	Up to 6 years	t: 0141 331 8640 e: postgraduate@gcu.ac.uk w: www.gcu.ac.uk/study/part-timedegrees
Block day release (plus Clinical Placement)	Fees variable depending on modules selected. Typically £435 per module (2011 fees). Self or employer funded.	2 - 6 years with early exit points at PgC/PgD level	t: 0141 331 8640 e: postgraduate@gcu.ac.uk w: www.gcu.ac.uk/study/part-timedegrees
Block day release	Fees variable depending on modules selected. Typically £435 per module (2011 fees). Self or employer funded.	Up to 6 years	t: 0141 331 8640 e: postgraduate@gcu.ac.uk w: www.gcu.ac.uk/study/part-timedegrees
Weekends, online/ distance learning & clinical placement	Fees variable depending on modules selected. Typically £435 per module (2011 fees). Self or employer funded.	3 - 6 years with early exit points at PgC/PgD level	t: 0141 331 8640 e: postgraduate@gcu.ac.uk w: www.gcu.ac.uk/study/part-timedegrees
Block day release	Fees variable depending on modules selected. Typically £435 per module (2011 fees). Self or employer funded.	3 - 6 years with early exit points at PgC/PgD level	t: 0141 331 8640 e: postgraduate@gcu.ac.uk w: www.gcu.ac.uk/study/part-timedegrees
Block day release	Fees variable depending on modules selected. Typically £435 per module (2011 fees). Self or employer funded.	3 - 6 years with early exit points at PgC/PgD level	t: 0141 331 8640 e: postgraduate@gcu.ac.uk w: www.gcu.ac.uk/study/part-timedegrees
Block day release with some online/ distance learning modules	Fees variable depending on modules selected. Typically £435 per module (2011 fees). Self or employer funded.	up to 6 years	t: 0141 331 8640 e: postgraduate@gcu.ac.uk w: www.gcu.ac.uk/study/part-timedegrees
Block day release	Fees variable depending on modules selected. Typically £435 per module (2011 fees). Self or employer funded.	Up to 6 years	t: 0141 331 8640 e: postgraduate@gcu.ac.uk w: www.gcu.ac.uk/study/part-timedegrees
Block day release	Fees variable depending on modules selected. Typically £435 per module (2011 fees). Self or employer funded.	Up to 6 years	t: 0141 331 8640 e: postgraduate@gcu.ac.uk w: www.gcu.ac.uk/study/part-timedegrees

School of Health and Life Sciences

Apply online at: www.gcu.ac.uk/study/applyonline

Postgraduate programmes

Award and programme title	Entry requirements
PgC Health and Social Care (Podiatric Sports Medicine)	HPC Registered Chiropodist/Podiatrist. Honours degree preferred but consideration is given to those holding unclassified degrees or professional diplomas provided they have at least 1 year of professional work experience. (Newly qualified practitioners with no professional work experience should have a 2:1 Honours degree or above).
MSc Health and Social Care (Podiatry)	HPC Registered Chiropodist/Podiatrist. Honours degree preferred but consideration is given to those holding unclassified degrees or professional diplomas provided they have at least 1 year of professional work experience. (Newly qualified practitioners with no professional work experience should have a 2:1 honours degree or above).
PgC Health and Social Care (Podopaediatrics)	HPC Registered Chiropodist/Podiatrist. Honours degree preferred but consideration is given to those holding unclassified degrees or professional diplomas provided they have at least 1 year of professional work experience. (Newly qualified practitioners with no professional work experience should have a 2:1 Honours degree or above).
MSc Health and Social Care (Radiation Oncology)	The programme is open to HPC Registered Therapeutic Radiographers who hold an Honours degree. Applicants with unclassified degrees or professional diplomas should have at least two years professional experience prior to application. Individual modules may be undertaken by appropriately qualified healthcare professionals.
PgC Health and Social Care (Radiographic Image Interpretation)	The programme is open to HPC registered Diagnostic Radiographers.
MSc Health and Social Care (Social Work)	The programme is open to those who hold an Honours degree. Those with unclassified degrees or professional diplomas should have at least two years professional experience prior to application.
MSc Healthcare Education	Honours degree or equivalent. Relevant professional qualification; 3 years post qualifying experience.
MSc Midwifery	Applicants should be qualified midwives with an Honours degree or equivalent. Candidates with appropriate experience may be considered through the Recognition of Prior Learning (RPL).
MSc Nursing	Equivalent of the Postgraduate Diploma in Specialist Nursing (Specialist Practitioner Qualification in Acute Nursing Practise) must be a first level nurse on an appropriate part of the NHC register with at least two years post-registration work experience.
MSc Psychology and Mental Health	Candidates will normally hold a first degree or equivalent.
Graduate Diploma Psychology (Conversion)	Candidates should hold an Honours degree with some Psychology content though not necessarily at Honours level.
MSc Public Health	Honours degree or equivalent. Relevant professional qualification and / or appropriate experience in Public Health.
MSc Public Health with Social Action	Honours degree or equivalent. Relevant professional and/or appropriate experience in Public Health.

Mode of study	UK/EU fees*	Duration	Contact
Block day release	Fees variable depending on modules selected. Typically £435 per module (2011 fees). Self or employer funded.	Up to 6 years	t: 0141 331 8640 e: postgraduate@gcu.ac.uk w: www.gcu.ac.uk/study/part-timedegrees
Block day release	Fees variable depending on modules selected. Typically £435 per module (2011 fees). Self or employer funded.	3 - 6 years with early exit points at PgC/PgD level	t: 0141 331 8640 e: postgraduate@gcu.ac.uk w: www.gcu.ac.uk/study/part-timedegrees
Block day release	Fees variable depending on modules selected. Typically £435 per module (2011 fees). Self or employer funded.	Up to 6 years	t: 0141 331 8640 e: postgraduate@gcu.ac.uk w: www.gcu.ac.uk/study/part-timedegrees
Block day release	Fees variable depending on modules selected. Typically £435 per module (2011 fees). Self or employer funded.	3 - 6 years with early exit points at PgC/PgD level	t: 0141 331 8640 e: postgraduate@gcu.ac.uk w: www.gcu.ac.uk/study/part-timedegrees
Block day release	Fees variable depending on modules selected. Typically £435 per module (2011 fees). Self or employer funded.	Up to 6 years	t: 0141 331 8640 e: postgraduate@gcu.ac.uk w: www.gcu.ac.uk/study/part-timedegrees
Block day release	Fees variable depending on modules selected. Typically £435 per module (2011 fees). Self or employer funded.	3 - 6 years with early exit points at PgC/PgD level	t: 0141 331 8640 e: postgraduate@gcu.ac.uk w: www.gcu.ac.uk/study/part-timedegrees
Day	£2,760 per year, £690 per module. (2011 fees).	2 - 5 years	t: 0141 331 8640 e: postgraduate@gcu.ac.uk w: www.gcu.ac.uk/study/part-timedegrees
Online / Distance	Fees are charged per module. Typically £470 per module (2011 fees).	1 year full-time, 2 - 5 years part-time	t: 0141 331 8640 e: postgraduate@gcu.ac.uk w: www.gcu.ac.uk/study/part-timedegrees
Day	£390 per module (2011 fees).	Typically 3 years	t: 0141 331 8640 e: postgraduate@gcu.ac.uk w: www.gcu.ac.uk/study/part-timedegrees
Day Release	£1,560 per year or £390 per module (2011 fees).	Up to 3 years	t: 0141 331 8640 e: postgraduate@gcu.ac.uk w: www.gcu.ac.uk/study/part-timedegrees
Day Release	£2,320 per year or £580 per module (2011 fees).	Up to 3 years	t: 0141 331 8640 e: postgraduate@gcu.ac.uk w: www.gcu.ac.uk/study/part-timedegrees
Online / Day	£2,760 per year, £690 per module (2011 fees). Self or employer funded.	2 - 5 years	t: 0141 331 8640 e: postgraduate@gcu.ac.uk w: www.gcu.ac.uk/study/part-timedegrees
Online/Day	Visit www.gcu.ac.uk/study for details.	2-5 years.	t: 0141 331 8640 e: postgraduate@gcu.ac.uk w: www.gcu.ac.uk/study/part-timedegrees

School of Health and Life Sciences

Apply online at: www.gcu.ac.uk/study/applyonline

Postgraduate programmes

Award and programme title	Entry requirements
BA (Hons) Social Work	HNC and SVQ (Social Care) or equivalent. Must successfully complete two pre-requisite modules on a continuing professional development basis through the University. Candidates must normally be sponsored by their employer and also the employer must provide one additional placement to the pool of placements within the West of Scotland Learning Network.
Professional Doctorate for Health & Social Care & Nursing Professionals	Applicants will normally hold a 1st or 2.1 Honours degree or a postgraduate award in a relevant discipline plus a minimum of five years related professional experience. All prospective candidates are interviewed.
Stand-alone module credits: Perinatal Mental health for Health and Social Care Practitioners. Family Issues in perinatal Mental Health for Health and Social Care Practitioners	Perinatal Mental health for Health and Social Care Practitioners (40 SCQF Credits at Level 9,10 or 11). Family Issues in perinatal Mental Health for Health and Social Care Practitioners (20 SCQF Credits at Level 9,10 or 11) Working in the field of perinatal mental health, working with woman in perinatal period.

Note: The information contained in this prospectus was correct at the time of printing but is subject to change at any time. Prospective students are advised to consult www.gcu.ac.uk or contact us for the most up-to-date information before applying.

Mode of study	UK/EU fees*	Duration	Contact
Part time day and evening release	£2,300 per year for the continuing professional development modules (2011 fees). As this is an employer based programme, all students must normally have the support of their employer in relation to fees.	2½ years part time study and final year of full time study	<p>t: 0141 331 3334</p> <p>e: undergraduate@gcu.ac.uk</p> <p>w: www.gcu.ac.uk/study/part-timedegrees</p>
Block day release	Course fees for 2011 cohort were £12,000, payable by annual instalments of £3,000. Typically self or employer funded (or a combination).	4 years	<p>t: 0141 331 3334</p> <p>e: undergraduate@gcu.ac.uk</p> <p>w: www.gcu.ac.uk/study/part-timedegrees</p>
Blended: Workshop and On-line	Variable depending on the modules studied. Contact us for details.	1 Trimester per module	<p>t: 0141 331 3334</p> <p>e: undergraduate@gcu.ac.uk</p> <p>w: www.gcu.ac.uk/study/part-timedegrees</p>

Lifelong Learning

An increasingly important part of education today, Lifelong Learning is all about increasing opportunities for everyone. It's something that Glasgow Caledonian University strongly supports.

If we're going to widen access to education, formal qualifications can't be the only route to university. That's why we aim to provide flexible pathways into our postgraduate programmes through the Scottish Credit and Qualifications Framework (SCQF). In addition, we're committed to offering a broader recognition of previous learning and experience, through schemes like Credit Transfer and Recognition of Prior Learning (RPL).

Remember though, while this is our overall approach, specific arrangements for entry always need to be discussed with the appropriate admissions tutor.

Research and development

GCU hosts two centres with a strong focus on research and development to underpin wider access to learning: the Centre for Research in Lifelong Learning (CRL), and the recently established Centre for Learning and Development (CLD).

A joint venture between Glasgow Caledonian University and the University of Stirling, CRL is engaged in a range of research and knowledge exchange designed to influence both policy and provision in lifelong learning – both in Scotland and beyond. Working with a range of partners within GCU and externally, the Centre provides opportunities for informed debate in key areas through events such as international symposia on key themes in lifelong learning, the Scottish Forum for Lifelong Learning, seminars and workshops. Find out more at www.crl.org.uk.

CLD provides strategic leadership for widening participation, including flexible entry (such as RPL and credit transfer) and the development of articulation routes from college to university – including the SFC-funded Greater Glasgow Articulation Partnership (GGAP). GGAP aims to widen participation in Higher Education by developing a sustainable infrastructure for articulation, working with partner colleges, universities, employers and other agencies.

Research opportunities

CRL welcomes students who want to register for research degrees, including MPhil and PhDs. Key research themes for CRL and its associates include widening participation, social inclusion, equality and diversity. Reflecting the importance of Lifelong Learning, the University encourages students who want to undertake study in these and related areas of lifelong learning. The Learning Contract Framework includes qualifications up to Prof Dip level. These opportunities are ideal for anyone working in the field of Lifelong Learning including colleges, universities, training organisations or local enterprise companies.



Work Based Learning

The Scottish Centre for Work Based Learning offers flexible, career-focused programmes.



In addition to traditional academic programmes, Glasgow Caledonian University offers a range of flexible work based programmes. Aimed at developing career-focused skills and knowledge, the Scottish Centre for Work Based Learning is a leading light in the provision of skills for work, at work and about work.

Our programmes allow you to pursue a high quality university qualification while continuing to advance in your career. They also help you to integrate the operational and strategic challenges that you encounter in your professional life, through relevant work-based assessments.

The Centre's current professional clients cover a wide range of different sectors.

- Manufacturing
- Local government
- Rail operations and infrastructure
- Customer management
- Corporate affairs
- National Government departments
- Energy providers
- Charities
- NGOs
- Healthcare services.

What all these clients are looking for is a 'real-time' implementation of their academic learning. The benefits of this are seen in their career progression and improved performance levels at work. Undertaking a work based qualification provides tangible results for you and your career, while adding value to your organisation.

At the Scottish Centre for Work Based Learning, we work creatively to develop bespoke education programmes and partnerships with industry, public sector organisations and intermediaries. For individual learners we have many options at postgraduate level.

Current programme examples:

- BA Business and Customer Management by Learning Contract for Scottish and Southern Energy
- MSc Leadership and Management by Learning Contract for the Public Sector
- MSc in Citizenship and Human Rights by Learning Contract in partnership with SCVO
- BSc Railway Operations Management by Learning Contract in partnership with the Institution of Railway Operators.

Is work based learning right for you?

Work based learning offers a flexible way to achieve a higher level of academic qualification to support career progression. It's also aimed at people who want to build their knowledge in areas that are clearly identified for development at work. Through Recognition of Prior Learning, work and managerial experience can often provide a strong starting point for a postgraduate qualification.

For more information, contact Caroline Tuff at The Scottish Centre for Work Based Learning on 0141 273 1277. Alternatively, email her at C.Tuff@gcu.ac.uk



Applied Knowledge Exchange

Providing bespoke services for business and industry.

With strong links to industry and the public sector, the Applied Knowledge Exchange is Glasgow Caledonian University's dedicated business gateway. Supporting business growth and innovation, with a problem-solving approach, the Applied Knowledge Exchange provides flexible, high quality education programmes that meet your individual needs as well as those of your business.

We are committed to developing partnerships that respond directly to the needs of clients in the business and public sectors. We achieve this by creating dynamic, creative and bespoke education programmes – as well as offering strategic business development services and access to GCU's unique expertise, research and facilities.

We can help advise you on the University's accredited programmes which are recognised by leading professional bodies. In addition to this, there are part-time programmes, distance learning and short courses designed to develop essential career skills.

Our range of programmes covers a wide range of sectors, including:

- Business
- Finance
- Law
- Health care
- Engineering
- Construction.

Business Academies

The Applied Knowledge Exchange also partners with industry to design and deliver bespoke organisational Business Academy programmes. These are created to incorporate our clients' own strategic objectives for immediate impact. Building on its strengths in both education and research, Glasgow Caledonian University has innovative Business Academy partnerships with a range of clients. These including the Scottish Ambulance Service, ClydeUnion Pumps, Howden, and Scottish and Southern Energy.

These programmes are designed to deliver the highest possible training standards – ensuring that tomorrow's workforce has the skills and experience it needs.

Contact the Applied Knowledge Exchange on 0141 331 3189 or visit www.gcu.ac.uk/business and we can help you unlock the potential of your business.

We create dynamic, creative and **bespoke education programmes.**”



Continuing Professional Development

Improve your skills with a Continuing Professional Development (CPD) programme

At GCU, we work closely with industry partners to develop part-time programmes that are relevant, flexible and add value to students and businesses alike. Whether you are a business with staff training needs or an individual looking to develop your skills or retrain in something new and in demand, we offer a wide range of courses and specialist training, including professional accreditation. Our high-tech CPD Centre also offers seminar facilities, classrooms and conference space.

Visit www.gcu.ac.uk/study/professionaldevelopment for more detailed and up-to-date information on the opportunities available. If you would like to find out more about how your business can benefit from gaining access to GCU expertise, visit www.gcu.ac.uk/business/

We offer accredited CPD programmes in a wide variety of specialised areas, including Accountancy, Nursing and ICT, and our unique Work Based Learning programme offers you the opportunity to top up an HND to a degree within a highly flexible framework of part-time learning.

For details on GCU's specialist training programmes visit www.gcu.ac.uk/study/professionaldevelopment

Maps and Campus

Campus

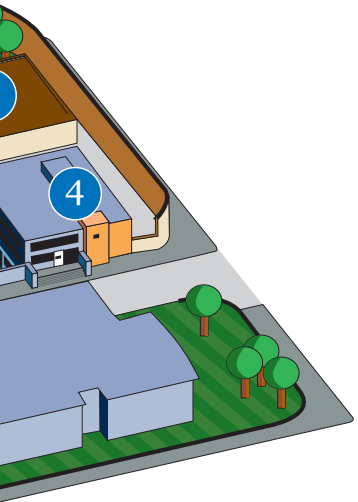
Access to the university

- A. Vehicle entrance from Cowcaddens Road
- B. Pedestrian entrances from Cowcaddens Road

University buildings

- 1. Britannia Building
- 2. Continuing Professional Development Centre and William Harley Building
- 3. Arc Health and Fitness Facility
- 4. Students' Association Offices
- 5. Govan Mbeki Building
- 6. George Moore Building
- 7. Hamish Wood Building
- 8. The Refectory
- 9. Occupational Health Unit
- 10. The Saltire Centre
- 11. Charles Oakley Laboratories
- 12. Nursery
- 13. Teaching Block
- 14. Milton Street Building
- 15. Caledonian Court
- 16. Buchanan House





Glasgow

University and colleges

- A Glasgow Caledonian University
- B City of Glasgow College

National and regional travel

Train stations

- D Central Station
- E Queen Street Station

Bus station

- F Buchanan Bus Station

Local and regional travel

Train stations

- G Charing Cross
- H Anderston
- I Argyle Street

Subway stations

- J Cowcaddens
- K Buchanan Street
- L St Enoch

Glasgow from

London	345 Miles
Paris	564 Miles
Moscow	1612 Miles
Athens	1793 Miles
New York	3221 Miles
New Dehli	3282 Miles
Toronto	3284 Miles
Beijing	4980 Miles
Tokyo	5781 Miles
Johannesburg	5960 Miles
Taipei	6026 Miles
Kuala Lumpur	6658 Miles
Singapore	6837 Miles
Buenos Aires	6980 Miles

Glasgow from

London	55Mins
Paris	1Hr 55Mins
Moscow	5Hrs 10Mins
Athens	5Hrs 15Mins
New York	6Hrs 5Mins
Toronto	7Hrs 55Mins
New Dehli	10Hrs 25Mins
Johannesburg	12Hrs 40Mins
Beijing	13Hrs 15Mins
Tokyo	13Hrs 15MMins
Kuala Lumpur	14Hrs 15Mins
Buenos Aires	14Hrs 15Mins
Singapore	14Hrs 40Mins
Taipei	17Hrs 50Mins

