



2012

INTERNATIONAL STUDENT GUIDE



A warm welcome to International Students!

By reading this Student Guide you are taking your first step on a path that we hope will lead you to choose Australian Catholic University (ACU) as your study destination. ACU is a public university offering a range of professionally accredited degree programs in five different cities on the east coast of Australia. We provide our students with opportunities for practical experience while they study - as well as a high level of social and academic support.

Our graduates are academically well qualified for their chosen careers. They also share a strong sense of social justice and an understanding of their ethical responsibilities in their communities and workplaces. We invite you to join the thousands of other ACU students who are working towards making a difference in the world.

Contents

	PAGE
Ten Reasons to Study at ACU	1
Our Students	2
Our Partnerships	3
Our Campuses	4
Our Services	6
Living in Australia	8
Entry Requirements	10
Pathway Programs	15
How to Apply	25
Our Courses	26
Faculty of Arts and Sciences	28
Faculty of Business	40
Faculty of Education	55
Faculty of Health Sciences	66
Faculty of Theology and Philosophy	72
Research Higher Degrees	74
Useful Information	76

Information in this publication is correct as at February 2011, but is subject to change. The University reserves the right to amend, cancel or otherwise modify without notice, the content of any matter in this publication, and may withdraw any course offered therein, or impose limitations on enrolment in any course.

Produced by Katerina Singh

Ten Reasons to Study at Australian Catholic University

Australian Catholic University (ACU) is a public university which commenced operations in 1991 following the amalgamation of four Catholic tertiary institutions with history dating back to the mid-1800's.

1. Australian Catholic University (ACU) is an Australian Government funded University

ACU is a university open to all students and staff regardless of their national, cultural or religious background. We are currently teaching students from more than 75 different countries.

2. Qualify for Life

As well as providing a quality academic experience, ACU provides students with the skills that enable them to qualify for life. We are proud to teach, encourage and support students who want to make a difference both personally and professionally.

3. High quality academic programs

ACU is a national leader in the fields of teacher education, exercise science and nursing. We also offer excellent degree programs in accounting, business information systems, commerce, environmental science, physiotherapy, social science, social work and visual arts and design. A high percentage of our degrees have professional accreditation.

4. ACU offers students the opportunity for professional or practical experience in most degrees

We recognise the importance of balancing theoretical knowledge with practical experience. Our degrees are therefore designed to produce graduates who are well-prepared for successful entry into the workforce.

5. Competitive tuition fees

ACU is proud of the fact that for several years it has been able to keep its tuition fees at an affordable level.

6. Access to career and employment advice

ACU careers advisers facilitate the development of skills for success in the employment process. They do this by offering a range of free workshops and an individual counselling service that is accessible on all campuses.

7. ACU offers students the opportunity to study abroad as part of their degree.

ACU has a large number of international partners. We encourage our students to consider spending at least one or two semesters at a partner university as part of their ACU degree. Financial assistance may be provided to those who choose this exciting option.

8. Guaranteed Pathways to degree programs

ACU offers a number of Diploma Pathway programs that lead to our undergraduate degrees. We also offer a range of English language programs for both undergraduate and postgraduate students. All of these programs are offered on-campus.

9. A community environment

Each campus is friendly and intimate. Dedicated staff, including specialist International Student Advisers and Counsellors, are committed to looking after the wellbeing of students.

10. We offer our degree programs in five different Australian cities

While students are offered the broadest choice of study programs in Sydney and Melbourne, they may also choose from a range of programs on our campuses in Brisbane, Ballarat and Canberra.

The University conducts its activities in accordance with the Education Services for Overseas Students Act (ESOS) 2000:
http://aei.dest.gov.au/sectors/international_education/default.htm

Australian Catholic University and the courses offered by the University are registered on the Commonwealth Register of Institutions and Courses of Overseas Students (CRICOS).
CRICOS PROVIDER REGISTRATION 00004G, 00112C, 00873F, 00885B

OUR STUDENTS



Hikaru Tsuyuki
General English,
Japan.

"At ACU the teachers are kind and know a lot about other countries' cultures. I've enjoyed being at ACU and meeting students from other countries. I think Sydney is a relaxed and sunny city."



Rizwan Rimshard
Bachelor of Business Information Systems,
Sri Lanka.

"The School of Business has a multi cultural team. The lecturers are friendly, helpful and easy to access. They are very co-operative with their students."



Albert Anso
Master of Business Administration,
Spain.

"The key points that made me want to study an MBA at ACU were the possibility of studying in a multicultural environment where students enjoy an atmosphere of equality."



Diana Marcela Roldan Garcia
IELTS Preparation,
Colombia.

"Being at ACU has made me well-prepared for the IELTS test and given me confidence. I've learned more academic English. The teachers are really dedicated. ACU has given me a good experience."



Adam Staples
Bachelor of Education,
UK.

"ACU is the third university I have studied at and it is the one I have the most affection for. Situated in the heart of Melbourne, with its boutique atmosphere, dedicated and approachable staff."



Ryosuke Miwa
Graduate Diploma in Education
(Secondary), Japan.

"I always feel that there is someone around me to help me, for example teachers and classmates. When I am sad or stressed from the difficult subjects, they cheer me up or give me advice."



Tamay Kumbas
English for Academic Purposes: Direct Entry,
Turkey.

"I've enjoyed the experience at ACU and meeting international students. The teachers are friendly and I've learned many new things."



Marie Christine Payenmootoo
Bachelor of Media Communication,
Mauritius.

"Since I've come here in ACU, I've found everybody is friendly here. You will feel actually like you are in Mauritius. The people are very warm. You won't feel like you are alone!"



Hilary Yao
Master of Teaching (Primary),
China.

"As an international student you might feel it is difficult the first couple of months but the teachers understand and they are willing to help you at anytime."

OUR PARTNERSHIPS

During 2010 ACU developed partnerships with prominent educational providers to create pathways for students and to further develop the link between higher education providers. ACU currently has memorandums of understanding with Box Hill Institute of TAFE in Victoria, Canberra Institute of Technology (CIT) in the Australian Capital Territory, Metropolitan South Institute of TAFE (MSIT) in Queensland and Northern Sydney Institute of TAFE (NSIT)/TAFE NSW in New South Wales. These agreements cover each of the states or territories where ACU has a campus, providing students with access to further education and other various benefits arising from the agreement.

The expansions of the memorandums of understanding is in progress, and so throughout the coming months ACU will, in conjunction with our partners, develop specific agreements that may cover credit, entry, academic collaboration, joint programs and reciprocal borrowing rights. If you would like further information on any of our partners or individual agreements please email partnerships@acu.edu.au

ACU also provide other pathways with educational providers not mentioned here-particularly for credit transfer, study abroad and exchange. If you would like further information please see our webpage at: <http://www.acu.edu.au/245638>



OUR CAMPUSES



Brisbane Campus (McAuley at Banyo)

**1100 Nudgee Road
Banyo QLD 4014**

Situated in the northern suburb of Banyo, this campus is located just 12 kilometres from the centre of Brisbane. The campus is on the site of the former Pius XII Provincial Seminary with a history extending back to 1863.

It is easily accessed by a shuttle bus and public transport. The campus is approximately 1 kilometre from Banyo train station. The campus provides quality teaching facilities, including a state-of-the-art library, science labs, nursing labs, computer facilities, music rooms, drama teaching room, a bookshop, library, computer labs, a swimming pool and sporting grounds.

At this campus we offer academic programs in arts, business, commerce, exercise science, nursing, social work and teaching.

**Student Population: 3510 students*
(including 501 international students)**

Living in Brisbane

Brisbane is the capital city of the state of Queensland, as well as the third largest city in Australia. It is set close to the Pacific Ocean and has a population of 1.25 million. It offers all the conveniences of a large city.



North Sydney Campus (Mackillop)

**40 Edward Street
North Sydney NSW 2060**

Just a five-minute train ride over the famous Sydney Harbour Bridge from the Sydney city centre, the campus is conveniently located in the North Sydney business precinct. North Sydney campus life is centred around a large outdoor courtyard and student recreational area where students congregate between classes.

The campus is small, multicultural, and friendly and is accessible by excellent bus and train services. The Vice-Chancellery of the University is located on this campus.

At this campus we offer academic programs in business, environmental science, information systems, nursing and physiotherapy.

**Student Population: 3387 students*
(including 1728 international students)**

Living in Sydney

Sydney has a population of more than 4.5 million, and is the largest city in Australia. World renowned for its beautiful harbour, Harbour Bridge and Opera House, Sydney also has a host of entertainment and sport activities. It is one of the most multicultural cities in the world and is perhaps the most well known of all Australian cities internationally.



Strathfield Campus (Mount St Mary)

**25A Barker Road
Strathfield NSW 2135**

Situated in one of the older, established suburbs in Sydney, the campus is located 15 kilometres west of the Sydney city centre. It is only a 20 minute train ride from the city centre, and an 8 minute bus trip from Strathfield train station.

The campus has gracious, historic buildings and beautifully landscaped grounds which make it an attractive and stimulating place to study. The central lawn provides a common meeting space and an area for student activities all year around.

At this campus we offer academic programs in arts, education, exercise science, social work and theology.

**Student Population: 4240 students*
(including 148 international students)**

*ACU Statistical Digest 2010



Canberra Campus (Signadou)

**223 Antill Street
Watson ACT 2602**

Conveniently located only five kilometres from the centre of Canberra, and well-served by public transport, Signadou is one of the University's smaller campuses. With approximately 55 friendly staff on site, students thrive in such an intimate, welcoming campus environment.

Facilities include computer labs, a library, a canteen, a swimming pool and a chapel. The Student Association organises an annual ball, barbecues, trivia nights, debates and other events throughout the year.

At this campus we offer academic programs in arts, education, nursing, social work and theology.

**Student Population: 777 students*
(including 9 international students)**

Living in Canberra

Canberra, the national capital, is considered one of the most convenient and safest places to live in Australia. Canberra has a population of more than 345,000. It is an international city with more than 70 diplomatic missions.



Ballarat Campus (Aquinas)

**1200 Mair Street
Ballarat VIC 3350**

The campus, which is set in beautiful gardens, is near the commercial centre of Ballarat and within easy reach of facilities. The delightful old buildings and majestic trees on campus reflect the history of the town and provide a tranquil setting for learning. The small campus is a cheerful place for students to meet, study and socialise.

Ballarat offers Camillus Residence, a modern complex of four, five and seven-bedroom self-contained houses (78 places), where residents live and prepare their own meals.

At this campus we offer academic programs in education, theology and nursing.

**Student Population: 808 students*
(including 11 international students)**

Living in Ballarat

Ballarat is a picturesque rural town of 80,000 people with fine buildings, attractive gardens, fountains, monuments and wide tree-lined streets. Features of "small town" living in Australia are the relative safety, lack of traffic congestion and friendly people.



Melbourne Campus (St Patrick's)

**115 Victoria Parade
Fitzroy VIC 3065**

The campus is conveniently located on the fringe of the Melbourne Central Business District (CBD). It is within a short walk of the popular retail strips of Brunswick Street and Smith Street with their variety of cafes, shops and art galleries.

The main campus building is a multi-storey complex that has been completely renovated to provide students and staff with purpose-built facilities. It is a modern, compact study environment that bustles with activity throughout the week.

Major new Melbourne Campus building is due for completion by May 2012.

At this campus we offer academic programs in arts, commerce, exercise science, media communication, nursing, psychology, social science and teaching.

**Student Population: 5849 students*
(including 952 international students)**

Living in Melbourne

Melbourne has on numerous occasions been voted amongst the world's most liveable cities. Melbourne has a population of 4 million. It is well known for its numerous parks and gardens and its cosmopolitan, outdoor cafe lifestyle.

OUR SERVICES

All international students have access to the general services and facilities available to Australian students. There are also special services tailored to meet the needs of international students.

Travelling to a foreign country to study can be a challenge. At ACU we aim to maximise your learning and development opportunities and eliminate stress and anxiety. Some of the services and facilities we offer are:

Academic Skills Support

Each campus has an Academic Skills Unit with advisers who can help you to study successfully at university. They will help you to develop study techniques, academic writing, presentation skills and exam strategies.

Accommodation

Your International Student Adviser can provide you with advice to assist you in finding permanent accommodation once you have arrived in Australia.

Career Development and Employment Service

Careers Advisers are available on each campus of ACU to assist students with making career decisions, identifying personal career goals, developing employability skills, searching for employment and preparing employment applications.

Computers and the Internet

Student computer facilities are available on campus. They include access to internet, wifi, email, and scanner facilities. A range of software for both classroom and professional purposes is also provided.

Counsellors

Qualified counsellors are available at each campus to offer free, confidential advice. The counselling service provides practical advice on study, finance and University procedures. Where necessary, they can also help with stress management, grief, depression and relationship difficulties.

Disability Services

Each campus has a Disability Adviser who assists students who have educational needs arising from a disability or long term medical condition. This service is free. Students are encouraged to contact the Disability Adviser as soon as possible, preferably before arrival in Australia, as it can take time to arrange any necessary educational adjustments.

English Language Programs

English Language Centres are located in Melbourne, North Sydney and Brisbane. We offer programs to enable you to reach the English proficiency requirements for entry to the University.

International Orientation

International students receive a comprehensive orientation program to familiarise them with university procedures, Australian study methods and social customs and culture. Campus tours and "welcome events" are also part of the international student induction.

International Student Advisers

Our philosophy of pastoral care ensures students feel confident and secure in Australia. International Student Advisers coordinate orientation for new international students, they provide assistance to students in regards to the University's policies and procedures, student visa obligations and general questions. They also organise social events and can help with accommodation queries.

Library

The campus libraries use the latest technology. Various reciprocal arrangements have also been made with libraries in other universities, which extend the resources available to students.

Campus Ministry

Each campus has a team to develop the University's Mission. This can include:

- » Opportunities for prayer, reflection and retreats
- » Leadership formation
- » 'Exploring the Mission of ACU' workshops
- » Pastoral care
- » Opportunities to be involved in social justice and community engagement.

The Student Associations

The Student Associations on each campus promote the welfare of students and encourage broad participation in university life.

Recreation and Sport Facilities

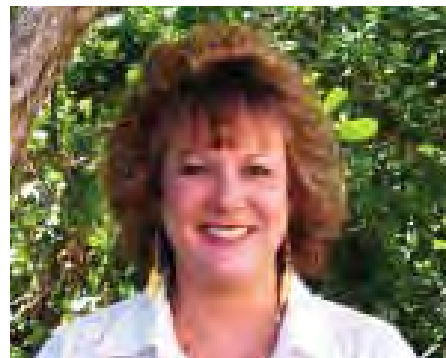
All campuses provide basic student recreational facilities such as student common rooms or outdoor sporting/recreational areas. Some campuses also have a gymnasium or a swimming pool.

Campus Life

Campus Life supports the development of ACU community through the facilitation of a rich, enjoyable, diverse and caring campus culture.

Campus life activities include the following:

- » orientation and transition programs
- » student leadership training and formation
- » mentoring and support networks
- » clubs and societies
- » campus events
- » national events.



Interview with Academic Skills Adviser, Nancy Reid

I enjoy working with international students...

because of the cultural diversity they bring to the university environment. International students come from such varied and interesting backgrounds that I am always learning new things about the world from them. I find that most international students who visit our service are highly motivated, very hard working and eager to learn and improve their course work.

What has been your best or most important experience at ACU?

On occasion I have had the opportunity to share in the journeys of international students from their very first arrival in Australia, through their English language studies and then on to undergraduate and postgraduate studies and finally employment. It has been an excellent experience to see them grow and develop not only their language skills and professional skills but to see them become more independent and confident individuals.

Incoming Study Abroad

Students who are interested in specific unit offerings at ACU are able to undertake studies as a non-award, study abroad student.

Study Abroad creates the opportunity to immerse yourself and experience first-hand living in another culture whilst continuing to make progress on your university studies. Students can undertake a full-time study load over a sixteen week semester. Units can be selected from all that are on offer to Australian students.

Study abroad provides great flexibility and an official transcript of results is provided upon completion of studies.

Study Abroad Plus:

ACU offers value-added study abroad options for students seeking a program that offers more than a typical semester abroad:

Study Abroad + Internship

Study Abroad + Community Engagement

For more information about undertaking Study Abroad at ACU, please visit our website: www.acu.edu.au/studyabroad

Group Study Abroad

Summer Semester

Groups of 12 can undertake a four to six week program which focuses on a variety of subject areas, depending on group requirements. Popular study areas include Australian Culture, Environmental Studies, Aboriginal Studies and Asian Studies. Field Trips and Internships can also be incorporated.

Full Semester

Groups of 12 can undertake a sixteen week program including two units of the students' choice, an internship or third unit and one compulsory unit titled Australian Culture and Diversity.

Study Tour

ACU offers tailored study programs for groups of varying sizes. These can be a combination of study and internships, a topic of your choosing and English, or English only.

For more information about undertaking Group Study Abroad at ACU, please visit our website: www.acu.edu.au/groups



Incoming Exchange students

Marion Vernet and Chloe Groussin
Bachelor of Business, France

"The atmosphere is friendly, you can call your teachers by their names, it is not as formal as in France for example. Moreover, if you have any questions or if there is something you want to talk about, teachers and counsellors are here for you, you can send an email or even call them."



Outgoing Exchange students

Nick Darlington
Bachelor of Business, North Sydney
Exchange to IESEG, School of Management – France

"I had fantastic teachers (from all over Europe and the world), good student support, and lots of options for subjects at my host university."

Incoming Exchange

If your university has a partnership agreement with ACU then you can apply for an exchange place and no tuition fees will be payable to ACU.

The exchange program allows you to select units from a wide range of study areas and complete one or two semesters at any of the six ACU campuses.

For more information about the exchange program, visit our website: www.acu.edu.au/exchange

Outgoing Exchange

International undergraduate and postgraduate students at ACU have the opportunity to study overseas for a portion of their degree.

As an ACU student on an Exchange program overseas you have the unique opportunity to travel, expand your horizons, enhance your degree, and make new friends.

You can take an exchange of one or two semesters at a choice of over 100 partner universities around the world.

Partnerships exist in:

- | | |
|-----------|-----------------|
| » Austria | » Ireland |
| » Brazil | » Japan |
| » Canada | » Mexico |
| » China | » Netherlands |
| » Chile | » Poland |
| » England | » South Korea |
| » Finland | » Sweden |
| » France | » Turkey |
| » Germany | » United States |

The University offers a grant of up to \$2500 to assist with payment of the exchange airfare.

For more information about overseas exchange opportunities, visit our website: www.acu.edu.au/exchange

LIVING IN AUSTRALIA

Australia is a country of stunning contrasts. It is slightly smaller in size than the United States but only has a population of 21 million. It contains arid deserts and lush tropical rainforests. The original inhabitants of the continent were the sole occupants for almost 50,000 years. In the last 200 years migrants have come here from all over the world.

The relaxed environment and comfortable climate provide many opportunities to enjoy both the beauty of the countryside and beaches, and the amenities of the modern cosmopolitan cities.

Fees

ACU tuition fees are comparable with those of other Australian universities.

Students are charged according to the number of units studied each semester. An average study load is 4 units (40 credit points) per semester. For the total course price, please refer to the Schedule of Tuition Fees.

- » The tuition fees cover:
- » Orientation program
- » Access to all student services and facilities which are available to local students
- » Study skills assistance

Students will also need to budget for textbooks, Overseas Student Health Cover (OSHC) and living costs. Some courses may also require the purchase of additional items (eg. uniforms for nursing courses).

Tuition fees may increase by up to 3 percent each year for the minimum duration of the course as provided on your electronic Confirmation of Enrolment (eCOE). No guarantee is made regarding tuition fee increases beyond the minimum duration.

Refund Policy

The ACU Refund Policy and Release Policy are available from the University website, via: www.acu.edu.au/international/59750

Visa Information

About Student Visas

Visas generally last for the period of the course, and are granted on the condition that students must leave Australia soon after completion of their studies. The University is required to report any student who does not attend classes or who is not making satisfactory academic progress. International students are required to complete the course within the minimum duration as provided on the eCOE.

If you wish to stay in Australia for the graduation ceremony (which takes place early in the year after completion of a course) you may need to apply in Australia for a visitor class visa.

Family (dependants)

If you intend to bring family members with you to Australia, you should first check with your nearest Australian Consular Office whether your visa allows for this. While you are in Australia, you will be responsible for supporting any dependants (ie, family members). Tuition fees must be paid for school age dependants who study in Australia.

Students who obtain Permanent Resident Visa Status

If you are granted permanent resident status after commencing a semester as an international student, that semester of study may be completed but it will be necessary to reapply for the course as a local student for subsequent semesters. Although every consideration will be given, there is no guarantee that you would be accepted back into the course, as the quotas for international students and local students are separate.

After becoming a permanent resident you would be liable to pay the local fees from the date of permanent residence, unless it is after the relevant semester census date. In this case you would be liable for local fees from the subsequent semester onwards.



Living Costs

The cost of living varies from city to city. Students require approximately \$A18,000 per year for living expenses. This covers accommodation, food and transport, but does not allow for luxuries, entertainment or a car.

In addition, an initial establishment cost is usually needed to cover rental bonds for accommodation, furniture, electricity and telephone expenses. Other expenses may include textbooks and study aids.

Initial Expenses

Item	Cost
Temporary accommodation (2 weeks)	\$500
Food and transport (1 month)	\$300
Rent in advance	\$300
Bond (refundable after leaving)	\$500
Furniture and kitchenware (second-hand)	\$900
Connection charges (for utilities)	\$200
Total	\$2700

Ongoing Expenses

Item	Cost
Rent (shared)	\$140
Food (home cooking)	\$90
Utilities (gas etc)	\$30
Public Transport	\$40
Personal	\$50
Total (week)	\$350
Total (year)	\$18,200

All costs are in Australian dollars and can vary greatly. They are a guide only.

Overseas Students Health Cover (OSHC)

The Australian government requires all international students and their dependants to obtain health insurance for the duration of their visas. Visa length cover must be paid with the first semester's tuition fee. OSHC covers 85% of the Government-scheduled fees for private doctors, pathology and x-rays. Students must make up the shortfall. Please note: OSHC will not cover any pre-existing conditions (ie those which existed within 18 months before the student began study). The University's preferred OSHC provider is Worldcare: www.oshcworldcare.com.au

Accommodation

The International Office can book temporary accommodation on your behalf and can also provide advice about permanent housing. The most common accommodation options for international students include:

Homestay

Homestay offers international students the opportunity to live in a local home while studying in Australia. By living with an Australian family you will improve your English and get a closer understanding of Australian life. Students should budget approximately AUD\$240 - \$250 per week for Homestay which includes utilities and most meals. A placement fee of AUD\$220 is also payable.

Private rentals

You may choose to live in private rental accommodation near your campus. If necessary your International Student Adviser will assist you to find a suitable property. You should budget approximately AUD\$120 - \$150 per week to rent a property shared with others. Utilities and food are not included.

Clothing

In Australia, clothing can be costly except for occasional bargains. If coming to a cooler climate (such as to Canberra, Ballarat or Melbourne) students should either bring warm clothes or budget additional funds to purchase them after arrival in Australia.

Travel Concessions

State government travel concessions are available to international students in Queensland and the Australian Capital Territory, but are not offered in New South Wales or Victoria.

Other

Students should note that legal, medical and dental services in Australia are quite expensive.

Employment

International students on a Student Visa are permitted to work for up to 20 hours per week during semester time and full-time during vacations (for example over the three month break of December to February).



ENTRY REQUIREMENTS

English Entry Requirements

For courses in the Faculty of Arts and Sciences, Faculty of Business, Faculty of Health Sciences or Faculty of Theology and Philosophy, applicants whose first language is not English and who have not previously undertaken at least one full-time academic year of secondary or tertiary study where the medium of study was English will be required to demonstrate their English proficiency, as set out below.

For courses in the Faculty of Education, any applicant who has not completed year 12 English (excluding ESL) or has not successfully completed at least two years of full-time secondary and/or tertiary study which has been conducted entirely in English in a country where English is the official language, will be required to demonstrate their English proficiency, as set out below.

The English language qualifications specified below must have been achieved within two years prior to the course commencement date.

ASSOCIATE DEGREE, DIPLOMA AND CERTIFICATE COURSES

Faculty	International English Language Testing System (IELTS)	Test of English as a Foreign Language - Academic (TOEFL)	ACU English Language Test
» Arts and Sciences	Overall Score: 5.5 Individual score of 5.0 in all tests	Internet based total of 69: min writing score of 20	D (55-60%)
» Business	Overall Score: 5.5 Individual score of 5.0 in all tests	Internet based total of 69: min writing score of 20	D (55-60%)
» Education	Overall Score: 6.0 Individual score of 6.0 in all tests	Internet based score of 80 Min 20 in all sections	C (60-65%)
» Health Sciences	Overall Score: 6.0 Individual score of 5.5 in all tests	Internet based score of 79 Min 20 in all sections	C (60-65%)
» Theology and Philosophy	Overall Score: 5.5 Individual score of 5.0 in all tests	Internet based total of 69: min writing score of 20	D (55-60%)

UNDERGRADUATE COURSES

Faculty	International English Language Testing System (IELTS)	Test of English as a Foreign Language - Academic (TOEFL)	ACU English Language Test
» Arts and Sciences » Bachelor of Psychological Science » Bachelor of Arts (Psychology), » Bachelor of Social Science (Psychology) » From admission cycle for commencement in 2012: Bachelor of Social Work, Bachelor of Arts/Bachelor of Social Work, Bachelor of Theology/Bachelor of Social Work	Overall Score: 7.0 Individual score of 7.0 in all tests	Internet based total of 100: min 25 writing, speaking, reading and listening	A (75-80%)
» Arts and Sciences (Other courses)	Overall Score: 6.0 Individual score of 6.0 in writing and speaking; 5.5 in listening and reading	Internet based total of 79: min writing 22	C (60-65%)
» Business	Overall Score: 6.0 Individual score of 6.0 in writing and speaking; 5.5 in listening and reading	Internet based total of 79: min writing 22	C (60-65%)
» Education (Teacher Preparation courses)	Overall Score: 7.0 Individual score of 7.0 in all tests	Internet based total of 100: min 25 writing, speaking, reading and listening	-
» Education (Other courses)	Overall Score: 6.5 Individual score of 6.0 in all tests	Internet based total of 90: min writing 25	B (65-75%)
» Health Sciences » Bachelor of Physiotherapy	Overall Score: 7.0 Individual score of 7.0 in all tests	-	-

Continued...

Faculty	International English Language Testing System (IELTS)	Test of English as a Foreign Language - Academic (TOEFL)	ACU English Language Test
<ul style="list-style-type: none"> » Health Sciences^{1,2,3} » Bachelor of Nursing » Bachelor of Midwifery 	Overall Score: 7.0 Individual score of 6.5 in all tests	Internet based total of 100: min 25 writing, speaking, reading and listening	A (75-80%)
<ul style="list-style-type: none"> » Health Sciences^{1,3} (Other courses) 	Overall Score: 6.5 Individual score of 6.0 in all tests	Internet based total of 90: min writing 25	B (65-75%)
<ul style="list-style-type: none"> » Theology and Philosophy 	Overall Score: 6.0 Individual score of 6.0 in writing and speaking; 5.5 in listening and reading	Internet based total of 79: min writing 22	C (60-65%)

POSTGRADUATE COURSES

Faculty	International English Language Testing System (IELTS)	Test of English as a Foreign Language - Academic (TOEFL)	ACU English Language Test
<ul style="list-style-type: none"> » Arts and Sciences » Psychology courses » From admission cycle for commencement in 2012: Master of Social Work 	Overall Score: 7.0 Individual score of 7.0 in all tests	Internet based total of 69: min writing score of 20	D (55-60%)
<ul style="list-style-type: none"> » Arts and Sciences (Other courses) 	Overall Score: 6.5 Individual score of 6.0 in all tests	Internet based total of 90: min writing 25	B (65-75%)
<ul style="list-style-type: none"> » Business 	Overall Score: 6.5 Individual score of 6.0 in all tests	Internet based total of 90: min writing 25	B (65-75%)
<ul style="list-style-type: none"> » Education (Graduate Entry and Postgraduate Teacher Preparation courses⁴) 	Overall Score: 7.5 Individual score of 7.5 in all tests	Internet based total of 102: min 25 writing, speaking, reading, listening	-
<ul style="list-style-type: none"> » Education » Master of Education » Master of Educational Leadership » Master of Religious Education 	Overall Score: 7.0 Individual score of 6.0 in all tests	Internet based total of 100: min writing 25	A (75-80%)
<ul style="list-style-type: none"> » Education (Other courses) 	Overall Score: 6.5 Individual score of 6.0 in all tests	Internet based total of 90: min writing 25	B (65-75%)
<ul style="list-style-type: none"> » Health Sciences » Master of Health Science (Rehabilitation) with Capital Medical University 	Overall Score: 6.5 Individual score of 6.0 in all tests	-	-
<ul style="list-style-type: none"> » Health Sciences (Other courses) 	Overall Score: 6.5 Individual score of 6.0 in all tests	Internet based total of 90: min writing 25	B (65-75%)
<ul style="list-style-type: none"> » Theology and Philosophy 	Overall Score: 6.5 Individual score of 6.0 in all tests	Internet based total of 90: min writing 25	B (65-75%)

¹The ACU Tertiary Preparation Program (Health Sciences) is acceptable for entry to bachelor degree courses in the Faculty of Health Sciences.

²A TAFE Diploma held by students licensed as enrolled nurses or the Occupational English Language Test (OELT) with a minimum grade of B in every sub-test is acceptable for entry into these courses.

³A student will be required to complete an IELTS test at the prescribed level for registration purposes.

⁴National Accreditation Authority for Translators and Interpreters (NAATI) is acceptable for entry to these courses

Qualification	Undergraduate Entry Requirements
GCE 'A' Levels	Two 'C' level passes or three 'D' level passes in the Cambridge GCE 'A' level Examination
European Baccalaureate	Diplome du Baccalaureate European Zeugnis der Europaischen Reifeprüfung Diploma di Licenze Liceale Europea, Europees Baccalaureats Diploma. Overall grade of 65.0
International Baccalaureate	Successful completion of International Baccalaureate with a minimum of 24 over six subjects
West African Senior School Certificate	Minimum aggregate of 10 in the best six subjects
Afghanistan	Successful completion of a recognised pre-tertiary or foundation program OR successful completion of one year of study at a recognised tertiary or higher education institution is required in addition to the completion of High School Studies
Albania	Successful completion of a recognised pre-tertiary or foundation program OR successful completion of one year of study at a recognised tertiary or higher education institution is required in addition to the completion of High School Studies
Algeria	Algerian Baccalaureate. Overall Grade of 15
Argentina	Successful completion of a recognised pre-tertiary or foundation program OR successful completion of one year of study at a recognised tertiary or higher education institution is required in addition to the completion of High School Studies
Australia	Australian Year 12. Application through relevant Tertiary Admissions Centre
Austria	Austrian Maturity Certificate. Overall grade of 3.1
Bahrain	Successful completion of a recognised pre-tertiary or foundation program OR successful completion of one year of study at a recognised tertiary or higher education institution is required in addition to the completion of High School Studies
Bangladesh	Higher Secondary School Certificate or Intermediate (10+2 years of schooling) conducted by the Board of Intermediate and Secondary Education Dhaka Bangladesh with an average of at least 65% in the best of four academic subjects in senior school
Belgium	Belgian Certificate of Access to Higher Education. Grade average of 12
Botswana	Successful completion of a recognised pre-tertiary or foundation program OR successful completion of one year of study at a recognised tertiary or higher education institution is required in addition to the completion of High School Studies
Brazil	Successful completion of a recognised pre-tertiary or foundation program OR successful completion of one year of study at a recognised tertiary or higher education institution is required in addition to the completion of High School Studies
Brunei	Two 'C' level passes in the Brunei GCE 'A' level Examination
Bulgaria	Bulgarian Diploma of Completion of Secondary Education. Grade average of 3.0
Burma (Myanmar)	Successful completion of a recognised pre-tertiary or foundation program OR successful completion of one year of study at a recognised tertiary or higher education institution is required in addition to the completion of High School Studies
Bhutan	Successful completion of a recognised pre-tertiary or foundation program OR successful completion of one year of study at a recognised tertiary or higher education institution is required in addition to the completion of High School Studies
Cambodia	Successful completion of a recognised pre-tertiary or foundation program OR successful completion of one year of study at a recognised tertiary or higher education institution is required in addition to the completion of High School Studies
Canada	Alberta - Average of 65% in 5 academic Year 12 courses in Alberta High School Diploma British Columbia – Average of C+ in 4 subjects including English in the British Columbia Senior Secondary School Graduate Diploma Manitoba – Average of 60% in the Manitoba High School Graduate Diploma New Brunswick – Average 65% required in 5 academic courses in the New Brunswick High School Graduation Certificate Newfoundland – Average 65% in 5 academic courses in the Newfoundland Provincial High School Graduate Certificate Nova Scotia – Average 65% in 5 academic courses in the Nova Scotia High School Completion Certificate Ontario – Average of 65% in 6 OAC courses in the Ontario Secondary School Diploma Prince Edward Island – Average of 65% in 5 academic subjects in the Prince Edward Island High School Graduate Certificate Quebec – Average of 65% in 5 academic Year 12 courses Saskatchewan – Average of 65% in 5 academic Year 12 courses
Chile	Successful completion of a recognised pre-tertiary or foundation program OR successful completion of one year of study at a recognised tertiary or higher education institution is required in addition to the completion of High School Studies
China	Successful completion of a recognised pre-tertiary or foundation program OR successful completion of one year of study at a recognised tertiary or higher education institution is required in addition to the completion of High School Studies
Colombia	Successful completion of a recognised pre-tertiary or foundation program OR successful completion of one year of study at a recognised tertiary or higher education institution is required in addition to the completion of High School Studies
Czech Republic	Czech Republic and Slovakian Maturita. Grade average of 3.3
Denmark	Senior High School (Studentereksames). Average grade of 7 on 13 point scale
Ecuador	Successful completion of a recognised pre-tertiary or foundation program OR successful completion of one year of study at a recognised tertiary or higher education institution is required in addition to the completion of High School Studies
Ethiopia	Successful completion of a recognised pre-tertiary or foundation program OR successful completion of one year of study at a recognised tertiary or higher education institution is required in addition to the completion of High School Studies

Qualification	Undergraduate Entry Requirements
Fiji	NZ Uni Bursaries Exam (Aggregate 263 in best 5 subjects). Fiji Form 7 (Aggregate 300 - max of 4 subjects)
Finland	Finnish Secondary School Leaving Certificate (Overall grade average of 6 in final year results). Finnish Matriculation Certificate (Overall grade of 3)
France	French Baccalaureate. Minimum average of 12 or assez bien
Germany	German Abitur - 3.4
Ghana	See GCE 'A' Levels OR African Nations OR West African Senior School Certificate (Aggregate of 26 in best 6 subjects)
Hong Kong	An aggregate of Hong Kong Advanced Level Examinations (HKALE) scores with a minimum score of 10. Advanced Levels are A=5, B=4, C=3, D=2, E=1. Advanced Supplementary Level are A=2.5, B=2, C=1.5, D=1, E=0.5.
Hungary	Hungary Maturity Certificate. Overall grade of 3.2
Iceland	Studentsprof from Gysium. Overall grade of 5.2
India	Standard XII CBSE All India Senior School Certificate with a minimum of 65% or Higher Secondary Certificate or Indian School Certificate.
Indonesia	SMU III - 7.2
Iran	Successful completion of a recognised pre-tertiary or foundation program OR successful completion of one year of study at a recognised tertiary or higher education institution is required in addition to the completion of High School Studies
Iraq	Successful completion of a recognised pre-tertiary or foundation program OR successful completion of one year of study at a recognised tertiary or higher education institution is required in addition to the completion of High School Studies
Ireland	Republic of Ireland Leaving Certificate. Aggregate score of 25 or higher in the best five higher or common level subjects
Israel	Israeli Teudat Bagrut. Overall grade average of 7.1
Italy	Successful completion of Italian High School Diploma with aggregate of 60
Japan	Upper Secondary School Graduation Diploma. Overall grade average of 80% (4 out of 5)
Jordan	Successful completion of a recognised pre-tertiary or foundation program OR successful completion of one year of study at a recognised tertiary or higher education institution is required in addition to the completion of High School Studies
Kenya	Successful completion of a recognised pre-tertiary or foundation program OR successful completion of one year of study at a recognised tertiary or higher education institution is required in addition to the completion of High School Studies
Korea	Senior High School Diploma with a GPA of 3.5 or qualified for university entrance in South Korea in the SAECE
Kuwait	Successful completion of a recognised pre-tertiary or foundation program OR successful completion of one year of study at a recognised tertiary or higher education institution is required in addition to the completion of High School Studies
Laos	Successful completion of a recognised pre-tertiary or foundation program OR successful completion of one year of study at a recognised tertiary or higher education institution is required in addition to the completion of High School Studies
Lebanon	Lebanese Baccalaureate. Overall grade of 12. For highly competitive entry programs minimum grade 15 (Courses such as Nursing, Psychology, Physiotherapy and some Education courses)
Liechtenstein	Liechtenstein Maturitätszeugnis. Grade average of 3.0
Luxembourg	Luxemborg Diplome de Fen D'Etudes. Grade average of 3.0
Malaysia	Two 'C' level passes in the STPM OR completion of the Malaysian Independent Chinese Secondary Schools Unifies Examination / Senior Middle Three with a minimum score of 65% (Average OSSHGD) or if OSSD must include at least 6 OAC's
Mauritius	See GCE 'A' levels
Mexico	Successful completion of a recognised pre-tertiary or foundation program OR successful completion of one year of study at a recognised tertiary or higher education institution is required in addition to the completion of High School Studies
Nepal	Successful completion of a recognised pre-tertiary or foundation program OR successful completion of one year of study at a recognised tertiary or higher education institution is required in addition to the completion of High School Studies
Netherlands	Netherlands - Duth Diploma of Pre-University Education. Grade average of 6.5
New Zealand	Assessed individually
Nigeria	See GCE 'A' Levels
Norway	Senior High School. GPA 3.0 (6 point scale)
Oman	Successful completion of a recognised pre-tertiary or foundation program OR successful completion of one year of study at a recognised tertiary or higher education institution is required in addition to the completion of High School Studies
Pakistan	Completion of the Higher Secondary School Certificate or Intermediate (Division 1) with an average of 65% in four academic subjects

Qualification	Undergraduate Entry Requirements
Papua New Guinea	Successful completion of a recognised pre-tertiary or foundation program OR successful completion of one year of study at a recognised tertiary or higher education institution is required in addition to the completion of High School Studies
Peru	Successful completion of a recognised pre-tertiary or foundation program OR successful completion of one year of study at a recognised tertiary or higher education institution is required in addition to the completion of High School Studies
Philippines	Successful completion of a recognised pre-tertiary or foundation program OR successful completion of one year of study at a recognised tertiary or higher education institution is required in addition to the completion of High School Studies
Poland	Matura/Swiadectwo Dojrzalosci with a minimum grade 4 pass
Portugal	Portugese Certificate of Secondary Education. Grade average of 10
Romania	Romanian Upper Secondary Leaving Certificate. Grade average 5.8
Russia	Successful completion of a recognised pre-tertiary or foundation program OR successful completion of one year of study at a recognised tertiary or higher education institution is required in addition to the completion of High School Studies
Saudi Arabia	Successful completion of a recognised pre-tertiary or foundation program OR successful completion of one year of study at a recognised tertiary or higher education institution is required in addition to the completion of High School Studies
Scotland	Scottish Certificate of Education (2 x C)
Seychelles	See GCE 'A' levels
Singapore	See GCE 'A' Levels
Slovakia	Czech Republic and Slovakian Maturita. Grade average of 3.3
South Africa	Successful completion of the Senior Certificate with Matriculation Examination with a minimum grade C pass
Spain	Spanish University Orientation Year. Grade average of 5.0
Sri Lanka	Passes in three subjects in the Sri Lanka 'A' Level Examination with at least two at "Credit" level or above
Sudan	Successful completion of a recognised pre-tertiary or foundation program OR successful completion of one year of study at a recognised tertiary or higher education institution is required in addition to the completion of High School Studies
Sweden	Swedish Secondary School Certificate. Grade Point average 3.0
Switzerland	Swiss Federal Maturity Certificate (aggregate score of 118)
Taiwan	Successful completion of a recognised pre-tertiary or foundation program OR successful completion of one year of study at a recognised tertiary or higher education institution is required in addition to the completion of High School Studies
Tanzania	See GCE 'A' Levels
Thailand	Matayom 6. GPA of 3.0
Tonga	Successful completion of a recognised pre-tertiary or foundation program OR successful completion of one year of study at a recognised tertiary or higher education institution is required in addition to the completion of High School Studies
Turkey	Successful completion of a recognised pre-tertiary or foundation program OR successful completion of one year of study at a recognised tertiary or higher education institution is required in addition to the completion of High School Studies
United Arab Emirates	Successful completion of a recognised pre-tertiary or foundation program OR successful completion of one year of study at a recognised tertiary or higher education institution is required in addition to the completion of High School Studies
United Kingdom	See GCE 'A' levels
United States of America	United States High School Graduate Diploma. Grade Point average of 2.8 and SAT scores of 500 for verbal and mathematical components
Vietnam	Successful completion of a recognised pre-tertiary or foundation program OR successful completion of one year of study at a recognised tertiary or higher education institution is required in addition to the completion of High School Studies
Zambia	See GCE 'A' levels
Zimbabwe	See GCE 'A' levels

If you don't meet the entry requirements for undergraduate study, you can consider our range of Pathway Programs (see pages 15-24).

The above indicative entry requirements may not meet specific requirements for courses that have competitive entry.



PATHWAY PROGRAMS

- General English
- English for Academic Purposes: Direct Entry
- English for the Workplace
- IELTS Test Preparation
- Diploma in Business
- Diploma in Business Information Systems
- Diploma in Commerce
- Diploma in Educational Studies
- Diploma in Environmental Science
- Diploma in Liberal Studies
- Diploma in Social Science
- Tertiary Preparation Program (Health Sciences)
- Diploma in Tertiary Preparation Nursing
- Diploma in Visual Arts and Design



English Language Programs

ACU has accredited English language centres on three campuses: Melbourne, North Sydney and Brisbane. All ELICOS courses are taught on campus and students have access to all university facilities. ACU provides a friendly and supportive learning environment with opportunities to meet and interact with local and international students.

Students may study English language programs as stand alone courses or as part of a package with ACU degree or diploma programs.

General English

LOCATION

North Sydney, Melbourne

DURATION

4 to 48 weeks

COMMENCEMENT

Every four weeks

LEVELS

Elementary to Advanced

Course Aims

Improve your English skills for everyday situations. This course is held on the university campuses and will help you develop fluency and confidence to use English for general communication in your job, social life or travel.

This course enables students to develop fluency, accuracy and confidence in listening, speaking, reading and writing in English in everyday situations. It is designed for students who require English for general communication in their jobs or social life, or who need to improve their English language skills before moving on to academic English.

Students in General English will develop:

- » Confidence in listening, speaking, reading and writing English through tasks relevant to their interests;
- » Accuracy in speaking and writing through extending their knowledge of English grammar and pronunciation;
- » An understanding of Australian society and culture through activities in the classroom and off campus, such as excursions to places of interest.

English for the Workplace

LOCATION

Brisbane

DURATION

4 to 12 weeks

COMMENCEMENT

Every four weeks

Course Aims

This course enables students to develop the English language and intercultural skills needed to communicate successfully in an Australian workplace.

The course is conducted on campus at ACU Brisbane. ELICOS students have access to all facilities including email, internet, use of the library, swimming pool and sporting facilities and the opportunity to interact with other students on campus.

English for the Workplace will help students develop:

- » Confidence in listening, speaking, reading and writing through tasks relevant to the workplace;
- » Clear and accurate pronunciation;
- » An understanding of what is expected in an Australian workplace and
- » how to interact successfully.

Optional internship component

- » Student visa or working holiday visa holders may take an internship in addition to the 20-hours class tuition each week. This will provide first hand experience of an Australian workplace.

IELTS Test Preparation

LOCATION

Brisbane, North Sydney, Melbourne

DURATION

Brisbane

4 to 12 weeks

Melbourne, North Sydney

4 to 24 weeks

COMMENCEMENT

Every four weeks

Course Aims

IELTS Test Preparation aims to prepare students to take the Academic Module of the IELTS Test or ACU English Test. It focuses on giving students a clear understanding of the IELTS Test and the skills and strategies they need to be successful. The course is organised around a series of topics that match those commonly found in the IELTS Test, such as technology, society and the environment.

Students in IELTS Test Preparation will develop:

- » Confidence and fluency to communicate on a wide variety of topics;
- » The ability to quickly and accurately explain information and express opinions;
- » Listening skills to cope with a range of situations;
- » The skills needed to quickly read and comprehend complex articles.

Students successfully completing the 12-week IELTS Test Preparation program may expect to improve their overall IELTS level by at least 0.5 band.



English for Academic Purposes: Direct Entry

LOCATION

Brisbane, North Sydney, Melbourne

DURATION

12 weeks

24 weeks

COMMENCEMENT

Brisbane

Every 4 weeks

North Sydney and Melbourne

12 week program - April, September

24 week program - January, July

Admission Requirements

12 week program

An IELTS score of 0.5 under the entry score for your intended study program at ACU.

24 week program

An IELTS score of 1.0 under the entry score for your intended study program at ACU.

Course Aims

This course gives students the unique opportunity to immerse themselves in the university environment and improve their English language proficiency while becoming familiar with Australian academic culture and academic skills. It is more than an English language course, it is a chance to equip students with the skills for success and give them a taste of university life in a supportive environment.

Upon successful completion of EAP students will meet the English language requirement of most ACU Diploma courses, undergraduate degrees and post graduate programs.

Students in English for Academic Purposes: Direct Entry will develop:

- » comprehension, critical thinking and note-taking skills;
- » academic speaking and writing skills, including referencing skills;

- » further knowledge of English grammar and vocabulary;
- » the ability to communicate on issues relating to their field of interest;
- » the ability to use campus library resources, including subject-specific databases.

Assessments

In the English for Academic Purposes: Direct Entry program, assessment is continuous. Students undertake a variety of assessment tasks, including:

- » writing an academic essay with appropriate referencing;
- » leading and participating in a tutorial discussion;
- » giving an oral presentation;
- » taking in-class English proficiency tests.

Advantages

English for Academic Purposes: Direct Entry focuses on developing the English language proficiency and approach to academic study that students need to successfully complete university level courses. At the same time, it allows students to become familiar with their campus and the resources and services available to international students.

The assessment tasks are similar to those that students undertake in university courses at ACU and require students to use campus library resources, including subject-specific databases. The content is stimulating. Students have the opportunity to focus on their own area of interest, such as nursing or business.

Late Entry

Due to the structure of the program, late entry is not advisable.

ACU English Test

The ACU test is offered every month and can be used to meet the English entry requirements for most programs at ACU.



Devina Joshi, Nepal

English for Academic Purposes / Bachelor of Nursing

“Being at ACU has made me more confident and independent. Meanwhile, I have learnt many new things. I would recommend international students to join ACU and I hope their experience will be as memorable as mine.”



Intake Dates for 2012

There are four 12 week terms each year. Students taking English for Academic Purposes should plan to start at the beginning of a term. For General English, English for the Workplace and IELTS Test Preparation, students may enrol on any of the listed started dates.

Intake Dates for 2012	9 January	6 February	5 March	2 April	30 April	28 May	2 July	30 July	27 August	24 September	22 October	19 November
General English, English for the Workplace, IELTS Test Preparation	Y	Y	Y	Y	Y	Y	Y	Y	Y	Y	Y	Y
English for Academic Purposes: Direct Entry (Brisbane)	Y	Y	Y	Y	Y	Y	Y	Y	Y	Y	Y	Y
English for Academic Purposes: Direct Entry (North Sydney, Melbourne) - 12 week program	-	-	-	Y	-	-	-	-	-	Y	-	-
English for Academic Purposes: Direct Entry (North Sydney, Melbourne) - 24 week program	Y	-	-	-	-	-	Y	-	-	-	-	-

Break Week: 25 June to 29 June 2012 (One week)

Brisbane

Course name	Total Cost (\$AUD) 4 weeks	Total Cost (\$AUD) 8 weeks	Total Cost (\$AUD) 12 weeks	Total Cost (\$AUD) 16 weeks	Total Cost (\$AUD) 20 weeks	Total Cost (\$AUD) 24 weeks	Total Cost (\$AUD) 28 weeks	Total Cost (\$AUD) 32 weeks	Total Cost (\$AUD) 36 weeks	Total Cost (\$AUD) 40 weeks	Total Cost (\$AUD) 44 weeks	Total Cost (\$AUD) 48 weeks	Page
IELTS Test Preparation	1,120 ¹	2,240 ¹	3,360 ¹	-	-	-	-	-	-	-	-	-	17
English for Academic Purposes: Direct Entry	1,120 ¹	2,240 ¹	3,360 ¹	4,480 ¹	5,600 ¹	6,720 ¹	-	-	-	-	-	-	17
English for the Workplace	1,120 ¹	2,240 ¹	3,360 ¹	-	-	-	-	-	-	-	-	-	18

¹Based on tuition fees of \$280 per week.

North Sydney and Melbourne

Course name	Total Cost (\$AUD) 4 weeks	Total Cost (\$AUD) 8 weeks	Total Cost (\$AUD) 12 weeks	Total Cost (\$AUD) 16 weeks	Total Cost (\$AUD) 20 weeks	Total Cost (\$AUD) 24 weeks	Total Cost (\$AUD) 28 weeks	Total Cost (\$AUD) 32 weeks	Total Cost (\$AUD) 36 weeks	Total Cost (\$AUD) 40 weeks	Total Cost (\$AUD) 44 weeks	Total Cost (\$AUD) 48 weeks	Page
General English	1,240 ¹	2,480 ¹	3,720 ¹	4,960 ¹	6,200 ¹	7,440 ¹	8,680 ¹	11,160 ¹	12,400 ¹	12,400 ¹	13,640 ¹	14,880 ¹	17
IELTS Test Preparation	1,240 ¹	2,480 ¹	3,720 ¹	4,960 ¹	6,200 ¹	7,440 ¹	-	-	-	-	-	-	17
English for Academic Purposes: Direct Entry	1,240 ¹	2,480 ¹	3,720 ¹	4,960 ¹	6,200 ¹	7,440 ¹	-	-	-	-	-	-	17

¹Based on tuition fees of \$310 per week.



Diploma Programs

The ACU Diploma programs aim to provide students with the knowledge, academic skills and language skills necessary for an undergraduate degree. These programs aim to assist students in acclimatising to the academic culture and expectations of an Australian university. Successful completion of a Diploma program qualifies students who may not already meet the English or academic requirements for their chosen degree at ACU.

Course name	Duration	Midyear Intake	Brisbane	Northy Sydney	Strathfield	Melbourne	Total Cost (\$AUD)	Page
Diploma in Business	1 year	Y	•				13,200 ²	20
Diploma in Business Information Systems	1 year	Y		•			13,200 ²	20
Diploma in Commerce	1 year	Y		•		•	13,200 ²	21
Diploma in Educational Studies	1 year		•		•	•	12,200 ²	21
Diploma in Environmental Science	1 year	Y		•			12,200 ²	22
Diploma in Liberal Studies	1 year	Y	•		•	•	12,200 ²	22
Diploma in Social Science	1 year	Y	•			•	12,200 ²	23
Tertiary Preparation Program (Health Sciences)	1 year			•		•	13,000 ²	23
Diploma in Tertiary Preparation Nursing	1 year	/	•				13,000 ²	24
Diploma in Visual Arts and Design	1 year	Y			•	•	12,200 ²	24

²Includes a \$200 nonrefundable enrolment fee.
/ May intake.

Diploma in Business

LOCATION

Brisbane

DURATION

1 year full-time

COMMENCEMENT

February, July

Admission Requirements

- » High School Graduation (with a minimum of 50% pass)

Course Aims

The Diploma of Business is an introductory course in commerce that provides a broad grounding in the business concepts and models underpinning the Bachelor of Commerce and other awards.

It emphasises social and environmental issues while providing students with a broad understanding of the key areas of business. It assists students in gaining effective communication and research skills and an understanding of business.

Course Structure

Students are required to complete a total of 80 credit points, consisting of:

- » Australian Society
- » English Language Communication Skills
- » Six approved Faculty units from the Bachelor of Commerce (60cp)

Faculty Units

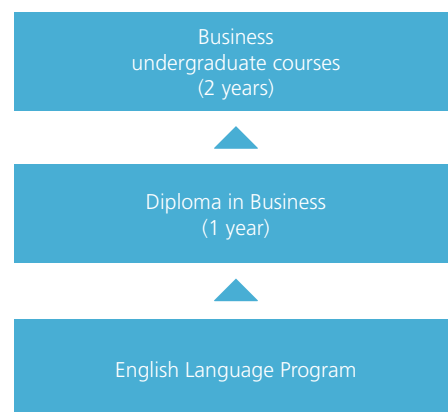
Faculty units may vary from campus to campus, but can include:

- » Principles of Accounting
- » Reasoning and Communication
- » Management and People
- » Fundamentals of Business IS
- » Applied Business IS
- » Introduction to Law
- » Principles of Marketing
- » Business Data Analysis

Pathway Information

The Diploma in Business has been designed to serve as an alternate entry point into the undergraduate business courses. Students who do not qualify for direct entry into the Degree program may enter through the successful completion of the Diploma program.

When students continue onto the Degree they will be granted 80 credit points, which is equivalent to one year of study. Upon subsequent entry to the Bachelor of Commerce, Bachelor of Human Resource Management or Bachelor of Marketing students will be able to select electives to cater for their particular areas of interest.



Diploma in Business Information Systems

LOCATION

North Sydney

DURATION

1 year full-time

COMMENCEMENT

February, July

Admission Requirements

- » High School Graduation (with a minimum of 50% pass)

Course Aims

Diploma in Business Information Systems aims to provide an opportunity for provisional studies in units available in the Bachelor of Business Information Systems course and an alternative pathway into that course for international, fee-paying students. Students receive support in the form of additional tutorials, additional English language classes, close monitoring of individual student progress.

Emphasis is placed on the role of computer technologies in contemporary organisations, and in particular the course aims to prepare students for the emerging employment niches in the fields of data communications, distributed processing and PC-based local area networks.

Course Structure

Students are required to complete a total of 80 credit points, consisting of:

- » English Language Communication Skills
- » Fundamentals of Business IS
- » Six approved Faculty units from the Bachelor of Business Information Systems including 20cp from ISYS units (60cp)

Faculty Units

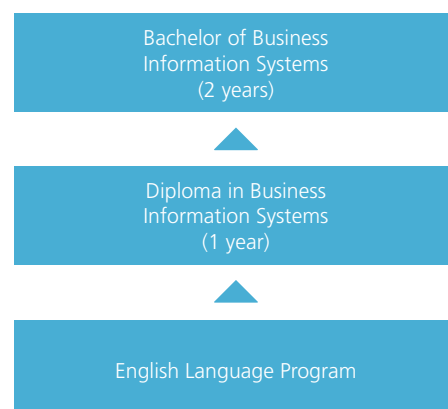
Faculty units vary from semester to semester, and from campus to campus, but can include:

- » Principles of Accounting
- » Reasoning and Communication
- » Management and People
- » Fundamentals of Business IS
- » Applied Business IS
- » Principles of Marketing
- » Business Data Analysis

Pathway Information

The Diploma in Business Information Systems has been designed to serve as an alternate entry point into the Bachelor of Business Information Systems.

When students continue onto the Degree they will be granted 80 credit points, which is equivalent to one year of study. Upon subsequent entry to the Bachelor of Business Information Systems, students will be able to select electives to cater for their particular areas of interest.



Diploma in Commerce

LOCATION

North Sydney, Melbourne

DURATION

1 year full-time

COMMENCEMENT

February, July

Admission Requirements

- » High School Graduation (with a minimum of 50% pass)

Course Aims

The Diploma of Commerce is an introductory course in commerce that provides a broad grounding in the business concepts and models underpinning the Bachelor of Commerce and other awards.

It emphasises social and environmental issues while providing students with a broad understanding of the key areas of business. It assists students in gaining effective communication and research skills and an understanding of business.

Course Structure

Students are required to complete a total of 80 credit points, consisting of:

- » English Language Communication Skills
- » Seven approved Faculty units from the Bachelor of Commerce (70cp)

Faculty Units

Faculty units may vary from campus to campus, but can include:

- » Applied Business IS
- » Business Data Analysis
- » Fundamentals of Business IS
- » Introduction to Law
- » Management and People
- » Principles of Accounting
- » Principles of Marketing
- » Reasoning and Communication

Pathway Information

The Diploma in Commerce has been designed to serve as an alternate entry point into the undergraduate business courses. Students who do not qualify for direct entry into the Degree program may enter through the successful completion of the Diploma program.

When students continue onto the Degree they will be granted 80 credit points, which is equivalent to one year of study. Upon subsequent entry to the Bachelor of Commerce, Bachelor of Human Resource Management or Bachelor of Marketing students will be able to select electives to cater for their particular areas of interest.

Business undergraduate courses
(2 years)

Diploma in Commerce
(1 year)

English Language Program

Diploma in Educational Studies

LOCATION

Brisbane, Strathfield, Canberra, Melbourne

DURATION

1 year full-time

COMMENCEMENT

February

Admission Requirements

- » High School Graduation (with a minimum of 50% pass)

Course Aims

The aim of the course is to meet the needs of international students from diverse backgrounds with a range of interests who wish to study an award program as a means of accessing higher education. Students study communication subjects along with introductory education units.

Faculty Units

Faculty units vary from semester to semester, and from campus to campus, but can include:

- » Indigenous Cultures and Peoples
- » Creative Arts Education 1
- » Early Childhood Education 1: Early Childhood Pedagogy and Curriculum
- » Social Analysis and Community Outreach
- » Contexts for Learning and Development
- » Understanding Learning
- » Early Childhood Education 2: The Ecology of Childhood
- » Communication Skills and their Contexts
- » Linguistics for Literacy
- » Children's Literature for Literacy
- » Classroom Communication Skills
- » Exploring Mathematics 1
- » Personal Development, Health and Physical Education 1
- » Computers in Education
- » Science and Technology for Early Childhood and Primary Teachers 1
- » Information Technology and the Classroom
- » Introduction to the Bible
- » What Christians Believe

Pathway Information

This course is designed for students who are looking for a pathway into:

- » Bachelor of Education (Early Childhood and Primary)
- » Bachelor of Education (Primary)
- » Bachelor of Teaching / Bachelor of Arts

A student who successfully completes this program can enter the relevant Bachelor Degree with up to 80cp credit (equivalent to one year of study). To be eligible to enter these pre-service teacher education degrees, students must gain IELTS 7.0 with 7.0 in each band.

Bachelor of Education (Primary)
(3 years)
or
Bachelor of Education (Early Childhood and Primary)
(3-4 years)
or
Bachelor of Teaching / Bachelor of Arts
(3-4 years)

Diploma in
Educational Studies
(1 year)

English Language Program

Diploma in Environmental Science

LOCATION

North Sydney

DURATION

1 year full-time

COMMENCEMENT

February, July

Admission Requirements

- » High School Graduation (with a minimum of 50% pass)

Course Aims

The Diploma in Environmental Science is designed for students interested in studying subjects relating to environmental sustainability.

The course assists students to prepare for a diversity of careers in government departments, industry, tourism, environmental consultancies and environmental practice.

Course Structure

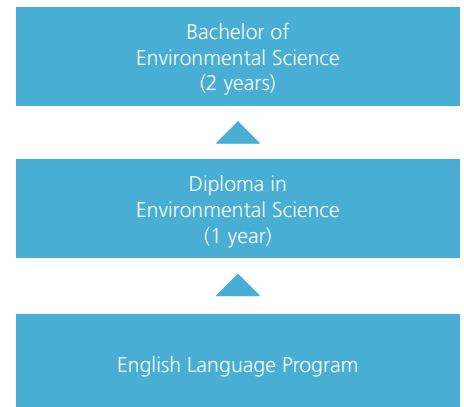
Students are required to complete a total of 80 credit points, consisting of:

- » Biodiversity
- » Principles of Ecology
- » Fundamentals of Chemistry
- » Earth Science
- » Environmental Issues
- » Introduction to Data Analysis
- » Physical Chemistry
- » Plus one other introductory Environmental Science Unit

Pathway Information

The Diploma in Environmental Science is designed to serve as an alternate entry point into the Bachelor of Environmental Science. Students who do not qualify for direct entry into the Degree program may enter through the successful completion of the Diploma program.

When students continue onto the Degree they will be granted 80 credit points, which is equivalent to one year of study.



Diploma in Liberal Studies

LOCATION

Brisbane, Strathfield, Melbourne

DURATION

1 year full-time

COMMENCEMENT

February, July

Admission Requirements

- » High School Graduation (with a minimum of 50% pass)

Course Aims

This course is designed for students interested in a broadly-based program that integrates the study of Australian society with a wide choice of subjects and the development of communication skills. Students may choose subjects that provide credit towards the Bachelor of Arts or other undergraduate courses in areas such as education and theology.

Emphasis is placed on the role of computer technologies in contemporary organisations, and in particular the course aims to prepare students for the emerging employment niches in the fields of data communications, distributed processing and PC-based local area networks.

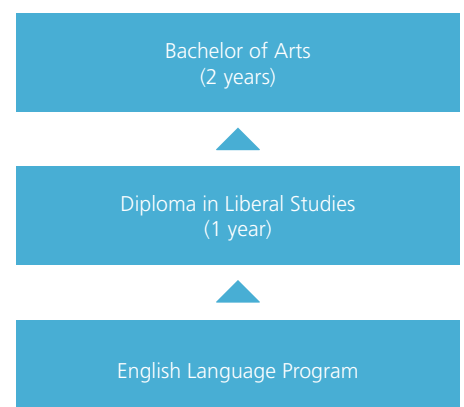
Course Structure

Students are required to complete a total of 80 credit points, consisting of:

- » Australian Society
- » English Language Communication Skills
- » Six approved Faculty units from the Bachelor of Arts (60cp)

Pathway Information

The Diploma in Liberal Studies has been designed to serve as an alternate entry point into the Bachelor of Arts. Students who do not qualify for direct entry into the Degree program may enter through the successful completion of the Diploma program. When students continue onto the Degree they will be granted up to 80 credit points, which is equivalent to one year of study.



Diploma in Social Science

LOCATION

Brisbane, Melbourne

DURATION

1 year full-time

COMMENCEMENT

February, July

Admission Requirements

- » High School Graduation (with a minimum of 50% pass)

Course Aims

The aim is to provide an opportunity for students from diverse backgrounds to study a selection of units of interest to them in a program that offers a pathway to a relevant Bachelors degree. This course is designed for students interested in a broadly-based program that integrates the study of sociology and Australian society with a choice of other subjects and the development of communication skills.

Course Structure

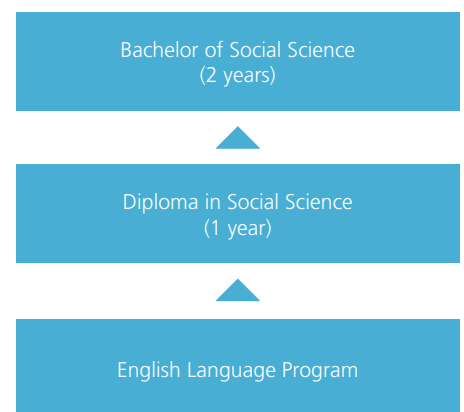
Students are required to complete a total of 80 credit points, consisting of:

- » Australian Society
- » English Language Communication Skills
- » Introduction to Sociology
- » Contemporary Society and Change
- » Two approved units from the Bachelor of Social Science (20cp)
- » Psychology A
- » Psychology B

Pathway Information

The Diploma in Social Science is designed to serve as an alternate entry point into the Bachelor of Social Science. Students who do not qualify for direct entry into the Degree program may enter through the successful completion of the Diploma program.

When students continue onto the Degree they will be granted 80 credit points, which is equivalent to one year of study.



Tertiary Preparation Program (Health Sciences)

LOCATION

North Sydney, Melbourne

DURATION

1 year full-time

COMMENCEMENT

February

Admission Requirements

- » High School Graduation (with a minimum of 50% pass)

Course Aims

This course is designed to prepare students to successfully pursue their academic studies in the area of the health professions using effective English language communication skills. Opportunities will be provided for students to develop communication skills used as a health practitioner. In particular, students will explore the language of medicine, verbal and written material, communication with patients and their relatives, and how to deal with issues in the health professions. Students will be introduced to critical thinking and problem solving. Emphasis will be placed on working independently and as a team member, self-directedness, and building confidence.

Course Structure

Students are required to complete a total of 80 credit points, consisting of:

- » Australian Society
- » English for Academic Purposes 1
- » English for Academic Purposes 2
- » English for Health Professionals 1
- » English for Health Professionals 2
- » English Language Communication Skills
- » Introduction to Health Care in Australia
- » Introduction to Science for Health Professionals

Pathway Information

The Tertiary Preparation Program (Health Sciences) is designed to serve as an alternate entry point into selected health sciences undergraduate courses. Students who do not qualify for direct entry into a degree program may enter after successful completion of the Tertiary Preparation Program (Health Sciences).

Please note: Tertiary Preparation Program (Health Sciences) is not a professional nursing qualification. It is intended only as a pathway leading to the ACU Bachelor of Nursing program.



Diploma in Tertiary Preparation (Nursing)

LOCATION

Brisbane

DURATION

1 year full-time

COMMENCEMENT

February, May

Admission Requirements

- » High School Graduation (with a minimum of 50% pass)

Course Aims

The Diploma in Tertiary Preparation (Nursing) aims to further develop students' English reading, writing, listening and speaking skills to qualify them for successful entry into the Bachelor of Nursing program.

Course Structure

Students are required to complete a total of 80 credit points, consisting of:

- » Australian Society
- » English Language Communication Skills
- » English for Academic Purposes 1
- » English for Academic Purposes 2
- » Nursing English 1
- » Nursing English 2
- » Introduction to Science for Nurses

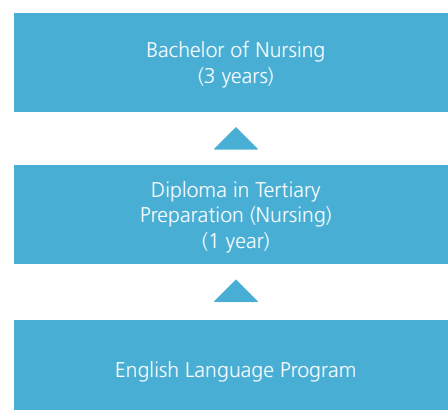
Pathway Information

The Diploma in Tertiary Preparation (Nursing) is designed to serve as an alternate entry point into the Bachelor of Nursing. Students who do not qualify for direct entry into the Degree program may enter through the successful completion of the Diploma.

Upon successful completion of the Bachelor of Nursing course, graduates are eligible to seek immediate registration as Registered Nurses with the relevant State Nurse's Registration Authority.

Please note that registration as a nurse in Australia is dependent upon meeting criteria of the relevant registering authority. Students are advised to discuss their eligibility with their Degree Course Coordinator and the local registration authority.

Please note: The Diploma in Tertiary Preparation (Nursing) is not a professional nursing qualification. It is intended only as a pathway leading to the ACU Bachelor of Nursing program.



Diploma in Visual Arts and Design

LOCATION

Strathfield, Melbourne

DURATION

1 year full-time

COMMENCEMENT

February, July

Admission Requirements

- » High School Graduation (with a minimum of 50% pass)

Course Aims

The Diploma in Visual Arts & Design is designed for students interested in a broadly-based program that integrates the study of selected units in the areas of studio-based art, graphic design and art and design history and theory combined with relevant communication and business skills. The course assists students to prepare for a diversity of careers in the visual and arts design and cultural industries.

Course Structure

Students are required to complete a total of 80 credit points, consisting of:

- » 20 cp from Core Units; and
- » 60 cp from Elective Units

Faculty Units

Core Units

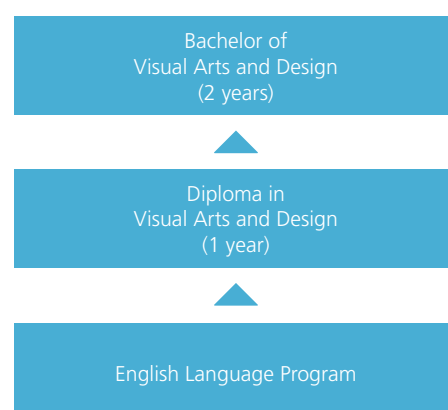
- » Art and Design History and Theory 1
- » English Language Communication Skills
- » 2D Studies 1
- » 3D/4D Object Design 1
- » Graphic Design 1
- » 2D Studies 2
- » 3D/4D Object Design 2
- » Graphic Design 2
- » Art and Design History and Theory 2
- » Introduction to Media Production
- » Video/Film Production

Pathway Information

The Diploma in Visual Arts & Design is designed to serve as an alternate entry point into the Bachelor of Visual Arts & Design.

Students who do not qualify for direct entry into the Degree program may enter through the successful completion of the Diploma program.

When students continue onto the Degree they will be granted 80 credit points, which is equivalent to one year of study.



HOW TO APPLY

Apply Online

ACU has a secure application facility on its website. You can complete our electronic application form, upload scanned documents and submit your application directly to the University.

Visit www.acu.edu.au/iapply

Application Deadlines

Applicants may apply to the University at any time, however on time closing dates for applications are as follows:

- » 31 October for February (1st semester) intake
- » 30 April for July (2nd semester) intake

Applications will be accepted after these dates if vacancies exist. English Language applications can be accepted at any time subject to intake vacancies.

The University reserves the right to close applications prior to the published closing dates where enrolment quotas are filled.

Australian Year 12 Applicants

If you are currently undertaking an Australian Year 12 and are hoping to enter an undergraduate degree, then you will need to apply through the relevant Tertiary Admissions Centre:

Queensland Tertiary Admissions Centre (QTAC)

www.qtac.edu.au

QTAC processes onshore Year 12 applicants for our campus in Brisbane (McAuley at Banyo). Offshore applicants undertaking an Australian Year 12 should apply directly to the University.

University Admissions Centre (UAC)

www.uac.edu.au

UAC processes both onshore and offshore Australian Year 12 applicants for our campuses in North Sydney (Mackillop Campus), Strathfield (Mount St Mary Campus) and Canberra (Signadou Campus).

Victorian Tertiary Admissions Centre (VTAC)

www.vtac.edu.au

VTAC processes onshore Year 12 applicants for our campus in Melbourne (St Patrick's Campus). Offshore applicants undertaking an Australian Year 12 should apply directly to the University.

Offer of Place

If your application to ACU has been successful, you will receive a "Letter of Offer" from the University. The letter will outline the following:

The course the applicant has been accepted into;

- » The starting date of the course;
- » The fees payable; and
- » The conditions of offer, if any (e.g. IELTS).

If your application is unsuccessful, we will also advise you by letter.

Accept your Offer

To accept your place at ACU, please do the following:

- » Sign the "Offer Acceptance and Payment Advice" form;
- » Make a payment of fees as indicated on your offer letter. You can pay by cheque, telegraphic transfer or you can pay online by credit card; and
- » Send a copy of your signed form and evidence of payment to:
international.finance@acu.edu.au

NOTE:

Applicants from Assessment Level 3 & 4 countries should not pay fees until advised by their Australian Visa Office of Pre Visa Approval (PVA). A copy of the PVA letter should be submitted along with the payment of fees. Please refer to the Australian Department of Immigration and Citizenship via www.immi.gov.au

Obtain a Student Visa

Upon receipt of payment, the University will issue an electronic "Confirmation of Enrolment" (eCOE).

Take this document to your nearest Australian Visa Office in order to apply for a visa. For information on visa matters, please refer to the Australian Department of Immigration and Citizenship via www.immi.gov.au

Am I an International Student?

International students are classified as those who wish to study on-campus in Australia using a Student Visa or Temporary Resident Visa.

NOTE:

Citizens and Permanent Residents of Australia, citizens of New Zealand, and all students who wish to study online or at a location outside Australia should not apply through the International Education Office.

OUR COURSES

Course Name	Duration (years)	Midyear Intake	Brisbane	North Sydney	Strathfield	Canberra	Ballarat	Melbourne	Total Cost (\$AUD)	Cost per year (\$AUD)	Page
Associate Degree in Early Childhood Education	2				•	•			33,600	16,800	56
Associate Degree in Inclusive Education and Disability Studies	2				•				33,600	16,800	56
Bachelor of Arts	3	Y	•		•			•	50,400	16,800	29
Bachelor of Arts (Business and Communication Studies)	3				•				50,400	16,800	29
Bachelor of Arts (Creative Arts and Culture)	3	Y	•					•	50,400	16,800	30
Bachelor of Arts (Psychology)	3	Y	•		•			•	50,400	16,800	30
Bachelor of Arts / Bachelor of Commerce	4	Y	•	•	•			•	67,200	16,800	30
Bachelor of Arts / Bachelor of Social Work	4		•		•				67,200	16,800	30
Bachelor of Business Administration	3	Y		•				•	60,000	20,000	43
Bachelor of Business Information Systems	3	Y		•					60,000	20,000	45
Bachelor of Commerce majoring in Accounting or Financial Services	3	Y	•	•				•	60,000	20,000	41
Bachelor of Commerce majoring in HRM, BIS or Marketing	3	Y	•	•				•	60,000	20,000	47
Bachelor of Commerce / Bachelor of Business Information Systems	4	Y		•					80,000	20,000	48
Bachelor of Counselling	3		•					•	50,400	16,800	35
Bachelor of Education (Early Childhood and Primary)	4		•		•	•	•	•	67,200	16,800	57
Bachelor of Education (Primary)	4	/	•		•	•	•	•	67,200	16,800	57
Bachelor of Environmental Science	3	Y		•					50,400	16,800	31
Bachelor of Exercise and Health Science	3		•		•			•	50,400	16,800	67
Bachelor of Exercise and Sports Science	3		•		•			•	50,400	16,800	68
Bachelor of Human Resource Management	3	Y	•	•				•	60,000	20,000	49
Bachelor of Inclusive Education and Disability Studies	3				•				50,400	16,800	56
Bachelor of Information Technology	3	Y		•					60,000	20,000	51
Bachelor of Marketing	3	Y	•	•				•	60,000	20,000	53
Bachelor of Media Communication	3	Y						•	50,400	16,800	32
Bachelor of Nursing	3		•	•		•	•	•	60,000	20,000	69
Bachelor of Physiotherapy	4		•	•					108,800	27,200	71
Bachelor of Psychological Science	3		•					•	50,400	16,800	33
Bachelor of Psychological Science (Honours)	1		•					•	16,800	16,800	34
Bachelor of Social Science	3	Y	•					•	50,400	16,800	36
Bachelor of Social Science (Psychology)	3		•					•	50,400	16,800	36
Bachelor of Social Work	2		•		•	•			33,600	16,800	37
Bachelor of Theology / Bachelor of Social Work	4		•		•	•			67,200	16,800	38
Bachelor of Teaching (Early Childhood)	3	Y			•	•			50,400	16,800	58
Bachelor of Teaching / Bachelor of Arts (Humanities)	4	Y	•		•			•	67,200	16,800	59
Bachelor of Teaching / Bachelor of Arts (Mathematics)	4	Y			•			•	67,200	16,800	59
Bachelor of Teaching / Bachelor of Arts (Technology)	4	Y			•				67,200	16,800	59
Bachelor of Teaching / Bachelor of Arts (Visual Arts)	4	Y			•				67,200	16,800	59
Bachelor of Theology	3	Y	•		•	•		•	50,400	16,800	73
Bachelor of Theology / Bachelor of Social Work	4		•		•	•			67,200	16,800	73
Bachelor of Visual Arts and Design	3	Y			•			•	50,400	16,800	39
Bachelor of Youth Work	3	Y						•	50,400	16,800	37

Course Name	Duration (Years)	Midyear Intake	Brisbane	North Sydney	Strathfield	Canberra	Ballarat	Melbourne	Total Cost (\$AUD)	Cost per year (\$AUD)	Page
Doctor of Education	3		•		•			•	55,500	18,500	74
Doctor of Philosophy	4	Y	•	•	•	•	•	•	74,000	18,500	75
Graduate Certificate in Accounting	½	Y		•				•	11,000	N/A	42
Graduate Certificate in Business Administration	½	Y		•				•	11,000	N/A	44
Graduate Certificate in Business Information Systems	½	Y		•					11,000	N/A	46
Graduate Certificate in Human Resource Management	½	Y		•				•	11,000	N/A	50
Graduate Certificate in Information Technology	½	Y		•					11,000	N/A	52
Graduate Certificate in Marketing	½	Y		•				•	11,000	N/A	54
Graduate Certificate in Religious Education	½	Y	•		•	•		•	8,400	N/A	
Graduate Diploma in Accounting	1	Y		•				•	22,000	22,000	42
Graduate Diploma in Business Administration	1	Y		•				•	22,000	22,000	44
Graduate Diploma in Business Information Systems	1	Y		•					22,000	22,000	46
Graduate Diploma in Education (Secondary)	1	/	•		•	•		•	21,000	21,000	61
Graduate Diploma in Human Resource Management	1	Y		•				•	22,000	22,000	50
Graduate Diploma in Information Technology	1	Y		•					22,000	22,000	52
Graduate Diploma in Marketing	1	Y		•				•	22,000	22,000	54
Graduate Diploma in Religious Education	1	Y	•		•	•		•	16,800	16,800	
Master of Accounting	1½	Y		•				•	33,000	22,000	42
Master of Accounting (Advanced)	2	Y		•				•	44,000	22,000	42
Master of Accounting / Master of Business Administration	2	Y		•				•	44,000	22,000	42
Master of Business Administration	1½	Y		•				•	33,000	22,000	44
Master of Business Administration (Advanced)	2	Y		•				•	44,000	22,000	44
Master of Business Information Systems	1½	Y		•					33,000	22,000	46
Master of Business Information Systems (Advanced)	2	Y		•					44,000	22,000	46
Master of Business Information Systems/ Master of Business Administration	2	Y		•					44,000	22,000	46
Master of Clinical Counselling	2		•		•			•	33,600	16,800	35
Master of Education (Research)	2	Y	•		•	•	•	•	37,000	18,500	74
Master of Education	1		•		•	•		•	16,800	16,800	64
Master of Educational Leadership	1	Y	•		•	•		•	16,800	16,800	64
Master of Exercise Science (Research)	2				•			•	37,000	18,500	75
Master of Health Science (Health Administration)	1		•						16,800	16,800	70
Master of Human Resource Management	1½	Y		•				•	33,000	22,000	50
Master of Human Resource Management (Advanced)	2	Y		•				•	44,000	22,000	50
Master of Human Resource Management/ Master of Business Administration	2	Y		•				•	44,000	22,000	50
Master of Information Technology	1½	Y		•					33,000	22,000	52
Master of Information Technology (Advanced)	2	Y		•					44,000	22,000	52
Master of Marketing	1½	Y		•				•	33,000	22,000	54
Master of Marketing (Advanced)	2	Y		•				•	44,000	22,000	54
Master of Marketing / Master of Business Administration	2	Y		•				•	44,000	22,000	54
Master of Midwifery (Research)	2		•					•	37,000	18,500	74
Master of Nursing (Research)	2		•	•		•	•	•	37,000	18,500	74
Master of Philosophy	2	Y	•	•	•	•	•	•	37,000	18,500	75
Master of Psychology (Clinical)	2		•					•	33,600	16,800	34
Master of Psychology (Educational and Developmental)	2							•	33,600	16,800	34
Master of Social Work	2		•		•	•			33,600	16,800	38
Master of Teaching (Primary)	2	/	•		•	•		•	33,600	16,800	63
Master of Teaching (Secondary)	2	/	•		•	•		•	33,600	16,800	64
Postgraduate Diploma in Psychology	1		•					•	16,800	16,800	34

/ Midyear intake available in some locations only.
Please refer to individual course listings or www.acu.edu.au/courses for further information on course offerings.



FACULTY OF ARTS AND SCIENCES

- Arts
- Counselling
- Environmental Science
- Media Communication
- Psychology
- Social Science
- Social Work
- Visual Arts and Design
- Youth Work

Arts	Brisbane	North Sydney	Strathfield	Canberra	Ballarat	Melbourne	Duration	Commencement
Bachelor of Arts	•		•			•	3	Feb/Jul
Bachelor of Arts (Business and Communication Studies)			•				3	Feb
Bachelor of Arts (Creative Arts and Culture)	•					•	3	Feb/Jul
Bachelor of Arts (Psychology)	•		•			•	3	Feb
DUAL DEGREES								
Bachelor of Arts/Bachelor of Commerce	•	•	•			•	4	Feb/Jul
Bachelor of Arts/Bachelor of Social Work	•		•				4	Feb

Bachelor of Arts

LOCATION

Brisbane, Melbourne, Strathfield

DURATION

3 years full-time

COMMENCEMENT

February, July

Admission Requirements

- » the equivalent of Australian Year 12 certificate

Course Aims

The Bachelor of Arts course offers a diversity of subjects, making it attractive to students seeking a liberal arts education and the development of skills either as a basis for employment or as the foundation for further specialised study. The course is designed to produce knowledgeable, articulate, innovative graduates skilled in research, logical thought, clear expression and the application of ethical principles to decision making. Studies include the arts, humanities and social sciences.

Course Structure

Students are required to complete a total of 240 credit points comprised of:

- » 160 credit points consisting of two Majors or one Major plus two Minors;
- » At least 20 credit points from Mission-focussed units;
- » Not more than 60 credit points of electives; and
- » Learning in the Community Unit.

Learning in the Community Unit

Australian Catholic University endeavours to develop students who are able to exercise moral and professional autonomy in a pluralistic society. The Learning in the Community unit enables students to contribute to community service in tangible ways that may enable ethical, spiritual and personal development.

Major / Minor Sequences*

Sequence	Melbourne	Brisbane	Strathfield
Asian Studies		Major	
Australian Studies		Major	Minor
Business Studies	Major	Major	Major
Communication	Minor	Minor	Minor
Computing			Minor
Drama	Major	Major	Minor
Economics		Minor	Major
Education	Minor	Minor	Minor
Family Studies	Minor		
Geography			Major
Gender Studies		Minor	
History	Major	Major	Major
Leisure Studies		Minor	
Literature	Major	Major	Major
Mathematics	Major		Major
Media	Major		
Music	Major	Major	
Philosophy	Major	Major	Major
Politics	Major		
Psychology +	Major	Major	Major
Science Studies	Minor		
Sociology	Major	Major	Electives
Study of Religions	Minor	Minor	Minor
Theological Studies	Major	Major	Major
Visual Arts	Major	Major	Major
Youth Work	Minor		

*Subject to change

*The 80cp major in Psychology is not accredited by the Australian Psychology Accreditation Council.

Further Study

On completion of this degree eligible students may apply for an Honours year to develop their research skills and build on the knowledge gained from their major area of study.

Career Paths

- » Art or music therapist
- » Arts institution or museum manager
- » Business administrator
- » Charity, heritage, Non-Government Organisation (NGO) or government organisation role
- » Communications professional in broadcast or print media, public relations or publishing role
- » Research assistant, market researcher or librarian
- » Teacher
- » Travel industry role
- » Training and development coordinator

Bachelor of Arts (Business and Communication Studies)

LOCATION

Strathfield

DURATION

3 year full-time

COMMENCEMENT

February

Admission Requirements

- » the equivalent of Australian Year 12 certificate

Course Aims

This course is suitable for students seeking a liberal arts education specialising in business and communication and the development of skills either for employment or as the foundation for further specialised study.

Course Structure

A student may complete a Specialisation in Business and Communication Studies in accordance with the following requirements from the Schedule of Unit Offerings:

Completion of:

- » a Major in Business Studies;
- » a Minor in Communication; and
- » a Minor in one of Computing, Economics, Mathematics or Psychology;

or

- » a Major in Economics;
- » a Minor in Communication; and
- » a Minor in Business Studies;

plus

- » at least 20 cp from Mission-focused Units;
- » Elective Units (not more than 60 cp); and
- » Learning in the Community Unit.

Bachelor of Arts (Creative Arts and Culture)

LOCATION

Brisbane, Melbourne

DURATION

3 years full-time

COMMENCEMENT

February, July

Admission Requirements

- » the equivalent of Australian Year 12 certificate

Course Aims

This course is suitable for students seeking a liberal arts education specialising in the creative arts. Students are encouraged to structure their individual academic programs to reflect their interests and career aspirations.

Course Structure

A student may complete a Specialisation in Creative Arts and Culture in accordance with the following requirements from the Schedule of Unit Offerings:

Completion of:

- » two Majors selected from Drama, Literature, Media, Music or Visual Arts;

or

- » a Major in one of Drama, Literature, Media, Music or Visual Arts; and
- » two Minors selected from Communication, Drama, Literature, Media, Music or Visual Arts;

plus

- » at least 20 cp from Mission-focused Units;
- » not more than 60 cp from Elective Units; and
- » Learning in the Community Unit.

Bachelor of Arts (Psychology)

LOCATION

Strathfield, Melbourne

DURATION

3 years full-time

COMMENCEMENT

February

Admission Requirements

- » the equivalent of Australian Year 12 certificate

Course Aims

This course is suitable for students seeking a liberal arts education that includes Psychology.

Course Structure

A student completes a Specialisation in Psychology in accordance with the following requirements from the Schedule of Unit Offerings:

Completion of:

- » APAC accredited sequence in Psychology (120cp);
- » Minor from any other discipline from the Schedule of Unit Offerings for the Bachelor of Arts;
- » at least 20 cp from Mission-focused Units;
- » not more than 60 cp from Elective Units; and
- » Learning in the Community Unit.

Bachelor of Arts/Bachelor of Commerce

LOCATION

Brisbane, North Sydney/Strathfield, Melbourne

DURATION

4 years full-time

COMMENCEMENT

February, July

Admission Requirements

- » the equivalent of Australian Year 12 certificate

Course Description

This course aims to provide both a liberal education and skills development focused on managerial decision making, business and personal leadership, the ethics of values-based management and relevant work experience. It is designed for students who wish to combine the benefits of a liberal education with specific skills focusing on accounting, financial services, human resource management, business or marketing.

Graduate career opportunities in a range of business-related fields will be broadened by generic communication and problem-solving skills developed in the Bachelor of Arts component of the combined degree course.

Professional Recognition

Graduates are eligible for membership of the following professional organisations depending on the business major completed:

- » CPA Australia
- » Institute of Chartered Accountants in Australia
- » Australian Human Resources Institute
- » Australian Marketing Institute
- » Business Information Systems
- » Australian Computer Society
- » Australian Institute of Management

Bachelor of Arts/ Bachelor of Social Work

LOCATION

Brisbane, Strathfield

DURATION

4 years full-time

COMMENCEMENT

February

Admission Requirements

- » the equivalent of Australian Year 12 certificate

Course Aims

The aim of the dual degree program is to provide an education in social work that is informed and enriched by a critical understanding of the liberal arts and oriented to the professional values and practice of the social work profession.

Professional Recognition

All graduates of the program are eligible for membership of the Australian Association of Social Workers (AASW).

Career Paths

- » Administration and policy positions
- » Community organisations
- » Community services
- » Corrective services
- » Program planning
- » Rehabilitation
- » Social action
- » Social administration
- » Social service



Environmental Science	Brisbane	North Sydney	Strathfield	Canberra	Ballarat	Melbourne	Duration	Commencement
Bachelor of Environmental Science		•					3	Feb/Jul

Bachelor of Environmental Science

LOCATION

North Sydney

DURATION

3 years full-time

COMMENCEMENT

February, July

Admission Requirements

- » the equivalent of Australian Year 12 certificate

Course Aims

This course educates students to contribute to the monitoring and management of processes and activities that affect the environment. The course provides students with an understanding and practical competence in the scientific, social, ethical and legal dimensions of the practice of environmental science.

The Bachelor of Environmental Science develops effective technological and communication skills to work collaboratively with employers, colleagues and the community.

Graduates are able to apply the relevant and current knowledge and skills they have gained to the practice of their profession with the highest ethical standards. This course develops the ability to become effective researchers and decision-makers with skills in critical thinking, problem solving and analysis.

Course Structure

Students are required to complete a total of 240 credit points, consisting of:

- » Environmental Science Units (120cp);
- » Science Units (120cp);
- » Learning in the Community Unit; and
- » Professional Work Experience.

Core Units

Environmental Science

- » Applied Studies 1: Occupational Health and Safety
- » Applied Studies 2: Professional Development
- » Environmental Data Analysis
- » Environmental Issues
- » Environmental Impact Assessment
- » Environmental Legislation and Planning
- » Earth Science
- » Geographic Information Systems
- » Introduction to Data Analysis
- » Landscape Hydrology and Management
- » Soils and Water
- » The Australian Environment: Values and Ethics

Science

- » Animal Ecology
- » Biodiversity
- » Conservation and Sustainability
- » Ecotoxicology
- » Environmental Chemistry
- » Fundamentals of Chemistry
- » Marine Coastal Ecology
- » Microbiology and Biotechnology
- » Organic Chemistry and Biochemistry
- » Physical Chemistry
- » Principles of Ecology
- » Vegetation Ecology

Professional Recognition

Graduates and students enrolled in the course will be eligible for the appropriate category of membership of the Environment Institute of Australia.

Professional Work Experience

The University, in consultation with students and host organisations, arranges appropriate placements for students. Professional Work Experience is normally for 15 days in the mid-year period between semesters.

Career Paths

- » Environmental auditor and assessor
- » Environmental consultant
- » Environmental manager
- » Environmental sustainability officer
- » Policy officer
- » Environmental tourism officer
- » Professional in a government agency, concerned with energy, water, natural resources and sustainability
- » Researcher
- » Shire council officer
- » Water resource scientist

Further Study

On completion of this degree eligible students may apply for an Honours year, which includes the writing of a thesis together with coursework, and prepares for a research-oriented career in environmental science or postgraduate study.



Media Communication	Brisbane	North Sydney	Strathfield	Canberra	Ballarat	Melbourne	Duration	Commencement
Bachelor of Media Communication							• 3	Feb/Jul

Bachelor of Media Communication

LOCATION

Melbourne

DURATION

3 years full-time

COMMENCEMENT

February, July

Admission Requirements

- » the equivalent of Australian Year 12 certificate

Course Aims

The Bachelor of Media Communication degree aims to enable students to understand and acquire the major competencies which characterise those who work in the fields of media and communication. The course focuses on the development of effective communication skills, including an understanding of the major issues confronting media communicators through discourse on critical issues and trends.

Professional Experience

Students undertake workplace training through an internship as well as the completion of a Learning in the Community unit.

Major Units in Media

- » 2D Computer Animation 1
- » 3D Computer Animation 1
- » Audio Production
- » Introduction to Media Production
- » Theorising the Media
- » Media Law
- » Power, Propaganda and Persuasion
- » Radio Production 1
- » Radio Production 2
- » Screen Production 1
- » Screen Production 2
- » Understanding Screen Text
- » Video Production

Major Units in Communication

- » Communication Ethics
- » Creative Writing
- » Interpersonal Communication
- » Introduction to Communication
- » New Media Communication
- » Written Communication
- » Writing the News

Core Units

Three Units chosen from:

- » Ethics and Peace in World Religions
- » Interfaith Relations and Dialogue
- » Theology of Communication
- » The Signs of the Times
- » What Christians Believe

Elective Units

Units in drama, literature, history, marketing, music, politics or visual arts from the Schedule of Unit Offerings for the Bachelor of Arts degree.

Career Paths

- » Communications
- » Freelance writing or consulting
- » Marketing
- » Media
- » Political offices
- » Public relations
- » Social media



Psychology	Brisbane	North Sydney	Strathfield	Canberra	Ballarat	Melbourne	Duration	Commencement
Bachelor of Psychological Science	•					•	3	Feb
Bachelor of Psychological Science (Honours)	•					•	1	Feb
Postgraduate Diploma in Psychology	•					•	1	Feb
Master of Psychology (Clinical)	•					•	2	Feb
Master of Psychology (Educational and Developmental)						•	2	Feb
Bachelor of Arts (Psychology) - see page 30	•		•			•	3	Feb
Bachelor of Social Science (Psychology) - see page 36	•					•	3	Feb

Bachelor of Psychological Science

LOCATION

Brisbane, Melbourne

DURATION

3 years full-time

COMMENCEMENT

February

Admission Requirements

- » the equivalent of Australian Year 12 certificate

Course Aims

The Bachelor of Psychological Science course offered in Melbourne and Brisbane will provide the necessary knowledge and skills to enable graduates to progress to postgraduate training in psychology (the next necessary step for career preparation as a professional psychologist). Potential psychologists require three years of approved undergraduate training before becoming eligible to enter postgraduate study and obtain eventual registration as a psychologist. For those who wish to move in alternative career directions, completion of the Bachelor of Psychological Science degree will offer potential employment in a broad range of areas including counselling, human resources and marketing, child welfare, community work, and education.

Professional Recognition

The Bachelor of Psychological Science is recognised by the Australian Psychology Accreditation Council as an accredited three year undergraduate degree in Psychology.

Core Units

- » Abnormal Psychology
- » Biological Psychology
- » Cognitive Psychology
- » Individual Differences and Assessment
- » Learning and Perception
- » Lifespan Development
- » Psychology A
- » Psychology B
- » Research Design and Statistics I
- » Research Design and Statistics II
- » Research Design and Statistics III
- » Social Psychology

Family Studies Units (Melbourne Only)

- » Families in Crisis
- » Families and Major Institutions
- » Family Support Programs
- » Family and Work
- » Family and the Law
- » Historical Perspectives on the Family
- » Introduction to Family Studies Marriage and Relationship Education
- » Special Topics in Family Studies

Counselling Units

- » Ethical and Professional
- » Humanistic Theories and Interventions
- » Introduction to Counselling and Micro-Skills
- » Issues in Counselling
- » Mediation and Dispute Resolution

Psychology Elective Units

- » Communication Skills
- » Cross-cultural Psychology
- » Psychology of Organisations
- » Psychology of Religion
- » Psychological Services Experience
- » Small Group Processes

Career Paths

- » Counselling
- » Child development
- » Community work
- » Human resources
- » Market research

Bachelor of Psychological Science (Honours)

Postgraduate Diploma in Psychology

LOCATION

Brisbane, Melbourne

DURATION

1 year full-time

COMMENCEMENT

February

Admission Requirements

Bachelor Degree (Honours)

- » high level achievement in a three year Bachelor Degree of Psychology qualification

Postgraduate Diploma

- » an Australian three year Bachelor Degree or equivalent, including an accredited three year sequence in psychology, completed within the last ten years. A minimum entry standard is normally at least a credit average in all second and third year units of the degree.

A full application, including all educational documents, must be received by the closing date in order to be considered. For details of documentation required please refer to the course browser: http://www.acu.edu.au/courses/postgraduate_coursework/Psychology/;

Entry is on a competitive basis. All applicants are ranked in October the year prior to admission before being considered for an offer in early December; and

Assessment of psychology qualifications by the Australian Psychology Accreditation Council (<http://www.apac.psychology.org.au/>).

Course Aims

Both courses provide students, who have previously completed an accredited three year sequence in psychology, with the opportunity for advanced level study in a selection of areas of specialisation in psychology.

Candidates studying Honours will have the opportunity to engage in research in a setting that encourages systematic reflection upon the methodology and theory being deployed. It is expected that students who meet the required standard in this course will be advantageously placed to go on to higher degrees with the ability to engage in significant psychological research.

Professional Recognition

The Bachelor of Psychological Science (Honours) and the Postgraduate Diploma in Psychology are recognised by the Australian Psychology Accreditation Council as accredited fourth year programs in Psychology. Those students who satisfactorily complete either program will be eligible for probationary registration as psychologists in Victoria, as well as becoming eligible for associate membership with the Australian Psychological Society.

Course Structure

- » Students are required to complete a total of 80 credit points, consisting of:
- » Core Units (30cp);
- » Research Units (40cp); and
- » Elective Units (10cp).

Core Units

- » Assessment and Intervention
- » Honours Thesis A
- » Honours Thesis B
- » Professional Issues and Ethics
- » Research Methods

Career Paths

- » Community Work
- » Counselling
- » Human Services
- » Market Research
- » Welfare

Master of Psychology (Clinical)

Master of Psychology (Educational and Developmental)

LOCATION

Master of Psychology (Clinical)
Brisbane, Melbourne

Master of Psychology (Educational and Developmental)
Melbourne

DURATION

2 years full-time

COMMENCEMENT

February

Admission Requirements

- » four years of an accredited undergraduate psychology sequence, comprising an Honours degree in psychology, or a three year degree including an accredited sequence in psychology plus an accredited fourth year in psychology

Assessment of psychology qualifications by the Australian Psychology Accreditation Council (<http://www.apac.psychology.org.au/>);

Referee reports (one professional/personal and one academic); and

Interview for short-listed candidates.

A full application, including all educational documents, must be received by the closing date in order to be considered. For details of documentation required please refer to the course browser: http://www.acu.edu.au/courses/postgraduate_coursework/Psychology/

Entry is on a competitive basis. All applicants are ranked in October the year prior to admission before being considered for an offer in early December.

Course Aims

This course is an accredited fifth and sixth year program in psychology. It provides psychology graduates with ethical values, advanced knowledge and professional skills in psychology, integrated by means of the scientist-practitioner model.

Professional Recognition

The Clinical stream and the Educational and Developmental stream both have current accreditation with the relevant Australian Psychological Society Specialist Colleges.

Course Structure

Students are required to complete a total of 160 credit points, consisting of:

- » Core Units (50cp);
- » Practicum Units (40cp);
- » Thesis Units (40cp); and
- » Specialisation Units (30cp).

Core Units

- » Counselling One-to-One
- » Foundations of Practice
- » Psychological Assessment
- » Psychological Disorders
- » Research Methods

Professional Experience

Students undertake a series of three practicum units designed to provide experience in the delivery of a range of psychological services. Within these units, students are probationary psychologists (PP) under the direct supervision of a registered psychologist. PP's in the Masters program are required to gain experience by placement for 1000 hours across at least three different clinical settings.

Career Paths

- » Psychologist
- » Researcher

Counselling	Brisbane	North Sydney	Strathfield	Canberra	Ballarat	Melbourne	Duration	Commencement
Bachelor of Counselling	•					•	3	Feb
Master of Clinical Counselling	•		•			•	2	Feb

Bachelor of Counselling

LOCATION

Brisbane, Melbourne

DURATION

3 years full-time

COMMENCEMENT

February

Admission Requirements

- » the equivalent of Australian Year 12 certificate

Course Aims

The Bachelor of Counselling provides the theoretical and practical skills and competencies to enable graduates to engage effectively in the work of counselling in a range of professional fields. This course offers students the opportunity to think critically, informed by study and personal development of the importance of counselling interventions in a complex and pluralistic society.

Accreditation

Bachelor of Counselling/Postgraduate Diploma in Counselling graduates may apply for membership of the Australian Association of Pastoral Counsellors through which they may obtain membership of the Psychotherapy and Counselling Federation of Australia (PACFA).

Course Structure

Students will complete a total of 240 credit points, comprising:

- » Core Units in Counselling (60cp); Specialised Counselling (40cp); and Psychology (40cp);
- » Clinical field work (40cp)*;
- » Elective Units (40cp); and
- » Core Mission-focused Units (20cp).
- » Core Units
- » Cognitive Behavioural Therapy
- » Grief and Loss Counselling
- » Humanistic Theories and Interventions
- » Introduction to Counselling and Micro Skills
- » Meditation and Dispute Resolution
- » Organisations and Group Processes

* Clinical Experience

Extensive clinical fieldwork placements and supervision are required for the completion of the Bachelor of Counselling. Fieldwork provides the opportunity to develop a framework for human service work together with practical skills.

Professional Recognition

Qld only: Graduates from the Counselling majors will be eligible to apply for associate membership of the Queensland Counsellors Association and membership of the Australian Association of Pastoral Counsellors.

- » Career Paths
- » Church-based chaplain
- » Community correctional officer
- » Correctional caseworker
- » Counselling at Kids Helpline
- » Counsellor for Lifeline
- » Child Safety officer
- » Family resource worker
- » Family worker
- » Juvenile justice officer
- » Pastoral care worker in hospital
- » School chaplain
- » Teen challenge counsellor
- » Youth worker

Further Study

Successful completion of the Bachelor of Counselling may be followed by a one-year Postgraduate Diploma in Counselling. The Postgraduate Diploma will also provide a pathway to the Master of Clinical Counselling.

Master of Clinical Counselling

LOCATION

Brisbane, Strathfield, Melbourne

DURATION

2 years full-time

COMMENCEMENT

February

Admission Requirements

- » the equivalent of an Australian three year Bachelor Degree; and
- » satisfactory interview demonstrating suitability to undertake the course

Course Aims

The Master of Clinical Counselling is designed to prepare professional counsellors to work in a range of settings such as community mental health, community agencies, church and para-church agencies, schools, multidisciplinary mental health teams, and in private practice. The programme consists of sixteen units studied over a minimum of two years covering a range of key people-helping themes including: grief and loss, trauma, the functioning of groups, drugs and alcohol, and mediation and conflict management. Graduates will have developed a comprehensive framework for their counselling practice, involving knowledge of theories and interventions in counselling, critical thinking,

ethical decision-making, behavioural assessment and evaluation.

Professional Recognition

The Master of Clinical Counselling will enable graduates to become graduate members of the Australian Register of Counselling Psychotherapy (ARCAP).

Course Structure

Students are required to complete a total of 160 credit points, consisting of:

- » Core Units (130cp)
- » Practicum Units (20cp)
- » Elective Units (10cp)

Core Units

- » Assessment and Cognitive Behavioural Therapy
- » Assessment and Psychodynamic Therapy
- » Counselling Practice Skills
- » Counselling Theories and Techniques
- » Emerging Approaches in Counselling
- » Ethics and Professional Practice
- » Grief and Loss: Issues and Approaches
- » Life Span and Developmental Issues in Counselling
- » Mediation and Conflict Resolution
- » Relationship and Family Counselling
- » Research in Counselling and Psychotherapy
- » Social and Cultural Critique
- » Worldview and Spiritual Issues in Counselling

Elective Units

- » Counselling Special Study
- » Drug and Alcohol Counselling
- » Group Processes in Counselling
- » Trauma Counselling

Professional Experience

Students are required to complete two practicum placements.

Each Practicum is 200 hours and involves substantial experience in the practice of counselling, including a minimum of 200 hours of person-to-person counselling.

Each Practicum placement requires students to source an on-site counselling supervisor who is appropriately qualified, i.e. who is eligible for PACFA membership. In addition, students will participate in group supervision with a University-appointed supervisor.

Career Paths

A range of counselling and human service careers is available including: Employee Assistance Programmes (EAP), Local Community Neighbourhood Centres, community services (e.g. Centacare, Kinnections, Lifeline), Kids Help Line, Relationships Australia, Mission Australia, regional domestic and family violence services, school counselling, government agencies (e.g. child protection, addiction recovery centres), crisis counselling centres, and private practice.



Social Sciences	Brisbane	North Sydney	Strathfield	Canberra	Ballarat	Melbourne	Duration	Commencement
Bachelor of Social Science	•					•	3	Feb/Jul
Bachelor of Social Science (Psychology)	•					•	3	Feb
Bachelor of Youth Work						•	3	Feb/Jul

Bachelor of Social Science

LOCATION

Brisbane, Melbourne

DURATION

3 years full-time

COMMENCEMENT

February, July

Admission Requirements

- » the equivalent of Australian Year 12 certificate

Course Aims

The Bachelor of Social Science course provides students with the theoretical insights and practical competencies that will enable them to play a creative role in a variety of public and community-based settings. The resources of contemporary sociology and psychology provide crucial theory and practices that enhance the quality of human life and enrich our understanding of the human person.

Course Structure

Students are required to complete a total of 240 credit points, consisting of:

- » Social Issues and Policy (10cp);
- » a Major in Sociology (80cp);
- » Major in Psychology^d or two Minors in Australian Studies, Counselling, Economics, Family Studies, Politics, Psychology and Youth Work (80cp);
- » Mission-focused Units (20cp); and
- » Elective Units (up to 50cp).

^dThe 80cp Major in Psychology is not accredited by the Australian Psychology Accreditation Council (APAC).

Core Units

- » Contemporary Society and Change
- » Introduction to Sociology
- » Qualitative Sociological Research Methods
- » Quantitative Sociological Research Methods
- » Social Issues and Policy
- » Sociology Major Core Units
- » Sociological Theory and Practice

Career Paths

- » Community development work
- » Community planning
- » Corrective services
- » Counselling
- » Family and child welfare
- » Hospital pastoral care
- » Human resources management
- » Social welfare work
- » Youth work

Bachelor of Social Science (Psychology)

LOCATION

Brisbane, Melbourne

DURATION

3 years full-time

COMMENCEMENT

February

Admission Requirements

- » the equivalent of Australian Year 12 certificate

This course explores the dialogue between psychology and sociology, which leads to professional competence in the human services sector. Studying social science provides a crucial theory and practice that enhance the quality of human life and enrich our understanding of the human person.

Course Structure

A student may complete a Specialisation in Psychology in accordance with the following requirements from the Schedule of Unit Offerings:

- » Core Unit (10cp);
- » Sociology Major (80cp);
- » APAC accredited Sequence in Psychology (120cp);
- » Mission-focused Units (20cp);
- » Elective Units (10cp)

Bachelor of Youth Work

LOCATION

Melbourne

DURATION

3 years full-time

COMMENCEMENT

February, July

Admission Requirements

- » the equivalent of Australian Year 12 certificate

Course Aims

This course is designed to meet community need for highly trained and skilled youth workers. Students will acquire theoretical insights and practical competencies that will prepare them to meet the challenges and demands of young people in a range of public and community-based settings. As a professional, students will

be committed to ethical practice and serving the common good. Students will develop effective prevention and intervention strategies to understand the issues confronting young people and youth workers.

Course Structure

Students are required to complete a total of 240 credit points, consisting of:

- » Major in Youth Work (80cp);
- » Major in Sociology (80cp);
- » Australian Indigenous Peoples: Past and Present (10cp);
- » Mission-focussed Unit (10cp);
- » Elective Units (30cp); and
- » Practicum Units (30cp).

Youth Work Core Units

- » History of Young People
- » Researching Young People
- » Building Relationships and Supporting Young People
- » Case Management in Youth Work
- » Ethical Principles and Practice of Youth Work

- » Wellbeing and Young People
- » Youth Policy
- » Youth Work in Community Settings

Professional Experience

Students are required to complete three practicum placements in the course. In the first practicum, students visit agencies. In second year, students are required to spend 304 hours in an agency working with young people and, in third year, students will be required to spend 380 placement hours in an agency that works with young people.

Career Paths

- » Administration
- » Advocacy
- » Development of youth policy
- » Research
- » Youth Worker

Social Work	Brisbane	North Sydney	Strathfield	Canberra	Ballarat	Melbourne	Duration	Commencement
Bachelor of Social Work	•		•	•			2	Feb
Bachelor of Social Work /Bachelor of Theology	•		•	•			4	Feb
Master of Social Work	•		•	•			2	Feb

Bachelor of Social Work

LOCATION

Brisbane, Strathfield, Canberra

DURATION

2 years full-time

COMMENCEMENT

February

Admission Requirements

- » a recognised Bachelor degree; or two years of a recognised Bachelor's degree;
- » studies should include a year of each of psychology and sociology or equivalent; and
- » applicants may also be required to undertake an interview

Course Aims

The Bachelor of Social Work course provides an education in social work that is informed by a critical understanding of the social science disciplines and that is oriented to the professional values and practices in the social work profession.

Professional Recognition

All graduates of the course are eligible for membership of the Australian Association of Social Workers (AASW). The AASW may require students to obtain a score of 7.0 in each component of the Academic IELTS.

Course Structure

Students are required to complete a total of 160 credit points consisting of:

- » Core Units (120cp); and
- » Field Education Units (40cp).

Field Education

Field Placement is a core element and a major part of a student's development of a professional identity. It provides an opportunity for students to observe, question and model social work behaviour and to translate Social Work Theory into practice, and to apply knowledge drawn from other subjects.

In order to meet the requirements of the Australian Association of Social Workers (AASW) students must complete 1000 hours of supervised field education. This is undertaken in 2 placements in approved agencies. Each placement is normally of 14 - 20 weeks duration.

Study Program

During the two year period the annual arrangement of the teaching and field placement is as follows:

Semester 1: 12 teaching weeks plus study and examination weeks;

Winter Semester: a two-week intensive;

Semester 2: Field preparation classes followed by a unit taught one day a week concurrently with field placement for 10-12 weeks. Field Placement includes class integration sessions held one half day per fortnight on campus.

Career Paths

- » Community development work
- » Community planning
- » Corrective services
- » Family and child welfare
- » Hospital pastoral care
- » Human services or public service sector
- » Manager or practitioner within the community
- » Policy maker, analyst or advisory officer in government departments, government ministries and local government
- » Social welfare work
- » Youth work

Further Study

Eligible students may apply to complete the Bachelor of Social Work (Honours) program.

Bachelor of Theology/ Bachelor of Social Work

LOCATION

Brisbane, Strathfield, Canberra

DURATION

4 years full-time

COMMENCEMENT

February

Admission Requirements

- » a three-year Bachelor degree, including studies in "understanding of society" and "knowledge of the individual; or
- » a three-year Bachelor degree; and additional undergraduate studies in "understanding of society" and "knowledge of the individual"

Course Aims

The aim of this unique dual degree course is to provide an education in social work that is informed by the range of values specific to religious tradition, and an education in theology that is oriented to the professional values and practice of the social work profession.

Course Structure

Students are required to complete 320 cp consisting of:

- » Major from Christian Practice Core Units (60cp);
- » Minor from Biblical Studies Units including (40cp);
- » Core Unit (10cp);
- » Minor from Christian Thought Core Units (40cp);
- » Theology Core Unit (10cp);
- » Philosophy Units (10cp);
- » Social Work Units (120cp); and
- » Social Work Field Placement Units (40cp).

Career Options

- » Chaplaincy
- » Parish associate work
- » Pastoral care
- » Social action
- » Social administration
- » Social Worker
- » Work in a welfare agency or community organisation
- » Work in human services
- » Work in justice and peace centres
- » Youth Worker

Master of Social Work

LOCATION

Brisbane, Strathfield, Canberra

DURATION

2 years full-time

COMMENCEMENT

February

Admission Requirements

- » the equivalent of Australian three year Bachelor Degree, including studies in "understanding of society" and "knowledge of the individual; or
- » the equivalent of Australian three year Bachelor Degree; and additional undergraduate studies in "understanding of society" and "knowledge of the individual"

Course Aims

This course will prepare you to be a qualified social worker, enabling you to work within Australia and internationally. Graduates enter professional practice in diverse contexts, including working with individuals, families, groups and communities, within organisations and service networks and in policy analysis and development. Informed by the latest research and by strong links to the profession and to community services, the course emphasises values and ethical practice and integrates theory and practice through an excellent field education program.

Course Structure

Students are required to complete 160cp of core units within the Master of Social Work.

Professional Recognition

The Master of Social Work has been accredited by the Australian Association of Social Workers (AASW), and on graduation students will be eligible for membership of the AASW.

Visual Arts and Design	Brisbane	North Sydney	Strathfield	Canberra	Ballarat	Melbourne	Duration	Commencement
Bachelor of Visual Arts and Design			•			•	3	Feb/Jul

Bachelor of Visual Arts and Design

LOCATION

Strathfield, Melbourne

DURATION

3 years full-time

COMMENCEMENT

February, July

Admission Requirements

- » the equivalent of Australian Year 12 certificate

Course Aims

The Bachelor of Visual Arts and Design course is designed for students interested in a broadly based course that integrates the study of studio-based art, art and design history and theory with a strand of graphic design. There is provision for specialisation by each individual student in the third year of the course as well as for an internship and acquisition of relevant professional skills. The course prepares students for ethical, professional practice in a diversity of careers in visual arts and design.

Course Structure

Students are required to complete a total of 240 credit points consisting of:

- » 2D Studies (40cp); *
- » 3D/4D Object Design (40cp); *
- » Graphic Design (40cp); *
- » Art and Design History and Theory (40cp);
- » Professional Development and Practice (20cp);
- » Self-directed Studies (40cp);
- » Mission-focussed Units (20cp); and
- » Learning in the Community Unit.

*In Melbourne only, up to four MEDA units may substitute for units in 2D studies and/or 3D/4D Object Design and/or Graphic Design.

Learning in the Community

Students in the Bachelor of Visual Arts and Design course are required to complete 15 days or equivalent of learning experience in the community to meet graduation requirements. Students normally register in this unit in Year 2 Semester 2. Further information will be available in Orientation Week.

Professional Development and Practice

Graduates of this course may be eligible for membership of the following professional bodies:

- » Australian Graphic Design Association (AGDA)
- » Australian Print Council
- » Australian Net Art and Technology (ANET)
- » Australian Sculptors Association
- » Craft Australia
- » International Council of Museums (ICOM)
- » International Association of Art (UNESCO) (only available to NAVA members)
- » National Association for the Visual Arts (NAVA)
- » Potters Society
- » Victorian Artists Society (VAS)
- » Victorian Ceramic Group

Career Paths

- » Advertising
- » Art therapists
- » Ceramics
- » Curators
- » Design teachers
- » Exhibition technicians
- » Graphic design
- » Illustration
- » Museum assistants
- » Museum management
- » Painting
- » Photography
- » Print and electronic media
- » Printmaking
- » Researchers
- » Sculpture

Further Study

Eligible students may apply to complete the Bachelor of Visual Arts and Design (Honours) program.



FACULTY OF BUSINESS

- Accounting
- Business Administration
- Business Information Systems
- Commerce
- Human Resource Management
- Information Technology
- Marketing



Accounting	Brisbane	North Sydney	Strathfield	Canberra	Ballarat	Melbourne	Duration	Commencement
Bachelor of Commerce majoring in Accounting or Financial Services*	•	•				•	3	Feb/Jul
Graduate Certificate in Accounting		•				•	½	Feb/Jul
Graduate Diploma in Accounting		•				•	1	Feb/Jul
Master of Accounting		•				•	1½	Feb/Jul
Master of Accounting (Advanced)		•				•	2	Feb/Jul
Master of Accounting/MBA		•				•	2	Feb/Jul

*available at North Sydney campus only

Bachelor of Commerce

Majoring in Accounting or Financial Services

LOCATION

Brisbane, North Sydney, Melbourne

DURATION

3 years full-time

COMMENCEMENT

February, July

Admission Requirements

- » the equivalent of Australian Year 12 certificate

Course Aims

This course prepares students for entry-level employment and future managerial positions. It develops understanding of, and proficiency in, the principles of business required in a variety of commercial, industrial and service organisations including agencies across all levels of government, and a variety of non-profit bodies.

Professional Recognition

Students who complete the Accounting major (including the unit BAFN200 Principles of Finance) are eligible for associate membership with CPA (Australia) and entry into the CA program of the ICAA (Institute of Chartered Accountants in Australia).

Course Structure

- » Students are required to complete a total of 240 credit points, consisting of:
- » Core Units (110cp);
- » Major (80cp);
- » Elective Units (50cp); and
- » One Professional Experience Unit.

Core Units

- » Applied Business IS
- » Business Data Analysis
- » Business Economics
- » Fundamentals of Business IS
- » Introduction to Law
- » Management and People
- » Principles of Accounting
- » Principles of Marketing
- » Reasoning and Communication
- » Professional Ethics
- » Strategic Management

Majors

Majors	Brisbane	North Sydney	Melbourne
Accounting	Yes	Yes	Yes
Financial Services	-	Yes	-

Accounting Units

- » Accounting Theory
- » Auditing and Assurance Services
- » Company Law
- » Financial Accounting A
- » Financial Accounting B
- » Managerial Accounting A
- » Managerial Accounting B
- » Taxation Law

In addition, students taking the Accounting major are also required to take:

- » Principles of Finance

Financial Services Units

- » Derivatives
- » Financial Instruments and Institutions
- » Financial Planning
- » Portfolio Management
- » Principles of Finance
- » Risk Management and Insurance
- » Superannuation and Retirement Planning
- » Taxation Law

Professional Experience

Students are required to complete one 15 day professional experience placement, normally in the second year of the program. It focuses on a period of personal service in a community organisation. Students who opt to undertake additional Professional Experience electives will have the opportunity to specialise and gain insight into identified future career areas, and hone their skills and opportunities with a view to eventual post-university full-time employment.

Career Paths

- » Business analyst
- » Forensic accountant
- » Management Accountant

Graduate Certificate in Accounting

Graduate Diploma in Accounting

Master of Accounting

Master of Accounting (Advanced)

LOCATION

North Sydney, Melbourne

DURATION

Graduate Certificate
1 semester full-time

Graduate Diploma
1 year full-time

Master
1.5 years full-time

Master-Advanced
2 years full-time

COMMENCEMENT

February, July

Admission Requirements

- » the equivalent of an Australian three year Bachelor Degree in any discipline; or
- » at least two (2) years professional experience in management/leadership positions

Course Aims

These courses offer students without an undergraduate degree or specialisation in accounting the opportunity to study accounting. The skills acquired are relevant to many business areas including marketing, economics, finance, human resource management and information systems. These programs are designed to provide students with the skills and competencies necessary to pursue a career in Accounting. It has been designed to meet the entry requirements of the professional accounting bodies: CPA Australia and the Institute of Chartered Accountants in Australia.

This program aims to enable students to analyse, research and make informed recommendations with respect to a broad range of accounting problems and issues. In addition graduates should have been exposed to a body of knowledge of essential accounting principles, practices and techniques and be able to apply these to a variety of situations including auditing, financial reporting, internal controls, and management accounting. Graduates will gain an appreciation of the ethical, legal and professional dynamics of accounting and the accounting profession.

Course Structure

Graduate Certificate

Students will complete a total of 40 credit points, comprising:

- » ACCT600 Accounting for Decision Making (10cp); and
- » Master of Accounting Units (30cp).

Graduate Diploma

- » Students will complete a total of 80 credit points, comprising:
- » Core Units (40cp); and
- » Master of Accounting Units (40cp).

Master

Students will complete a total of 120 credit points, comprising:

- » Core Units (120cp).

Master (Advanced)

Students will complete a total of 160 credit points, comprising:

- » Core Units (160cp).

Core Units

- » Accounting and Accountability
- » Accounting for Corporate Structures
- » Accounting for Decision Making
- » Australian Auditing and Assurance Services
- » Commercial and Corporations Law
- » Finance and Quantitative Methods
- » Managerial Economics in a Global Environment
- » Organisational Dynamics and Behaviour
- » Strategic Managerial Accounting
- » Strategic Management for Sustainability
- » Strategic Resource Management
- » Taxation Law

Career Paths

- » Accounting firm
- » Financial management

Professional Recognition

The Master of Accounting has been jointly accredited by CPA Australia and by the Institute of Chartered Accountants in Australia (ICAA). Graduates of the Master of Accounting are eligible for associate membership of CPA Australia and entry into the CA program of the ICAA.

Further Study

The Graduate Certificate and Graduate Diploma in Accounting articulate into the following program:

- » Master of Accounting

The Master of Accounting articulates into the following programs:

- » Master of Accounting/MBA
- » Master of Accounting (Advanced)

Master of Accounting/ Master of Business Administration

LOCATION

North Sydney, Melbourne

DURATION

2 years full-time

COMMENCEMENT

February, July

Admission Requirements

- » the equivalent of an Australian three year Bachelor Degree in any discipline

Course Aims

The Master of Accounting / Master of Business Administration combines the requirements and aims of both masters degrees. Students without an undergraduate degree or specialisation in Accounting gain the opportunity to study postgraduate Accounting. The skills acquired are relevant to many business areas including marketing, economics, finance, human resource management and information systems.

Professional Recognition

The Master of Accounting/MBA has been jointly accredited by CPA Australia and by the Institute of Chartered Accountants in Australia (ICAA). Graduates of the Master of Accounting are eligible for associate membership of CPA Australia and entry into the CA program of the ICAA.

Course Structure

Students will complete a total of 160 credit points, comprising:

- » Core Units (160cp).

Core Units

- » Accounting and Accountability
- » Accounting for Corporate Structures
- » Accounting for Decision Making
- » Australian Auditing and Assurance Services
- » Commercial and Corporations Law
- » Corporate Governance and Social Responsibility
- » Ethical Leadership in Organisations
- » Finance and Quantitative Methods
- » Managerial Economics in a Global Environment
- » Marketing Management
- » Operations and Information Systems
- » Organisation Dynamics and Behaviour
- » Strategic Managerial Accounting
- » Strategic Management for Sustainability
- » Strategic Resource Management
- » Taxation Law



Business Administration	Brisbane	North Sydney	Strathfield	Canberra	Ballarat	Melbourne	Duration	Commencement
Bachelor of Business Administration		•				•	3	Feb/Jul
Graduate Certificate in Business Administration		•				•	½	Feb/Jul
Graduate Diploma in Business Administration		•				•	1	Feb/Jul
Master of Business Administration		•				•	1½	Feb/Jul
Master of Business Administration (Advanced)		•				•	2	Feb/Jul

Bachelor of Business Administration

LOCATION

North Sydney, Melbourne

DURATION

3 years full-time

COMMENCEMENT

February, July

Admission Requirements

- » the equivalent of Australian Year 12 certificate

Course Aims

The Bachelor of Business Administration is an interdisciplinary course which prepares graduates for a career in business management without specialisation in a particular subject area. Students who wish to concentrate on a specific discipline are permitted to do so, with concentrations offered in Accounting, Finance, Marketing, Human Resource Management, and Business Information Systems.

Course Structure

Students are required to complete a total of 240 credit points, consisting of:

- » Core Units (140cp);
- » at least 60 cp from any other units listed in the Schedule of Unit Offerings for any bachelor degree course offered by the Faculty of Business, with at least 40 cp at advanced level;
- » up to 40 cp from other units listed in the Schedule of Unit Offerings for other bachelor degree courses; and
- » Professional Experience A.

Core Units

- » Applied Business IS
- » Business Data Analysis
- » Business Economics
- » Fundamentals of Business IS
- » Introduction to Law
- » Management and People
- » Organisational Behaviour
- » Organisational Change
- » Principles of Accounting
- » Principles of Finance
- » Principles of Marketing
- » Professional Ethics
- » Reasoning and Communication
- » Strategic Management

Career Path

- » Accounting
- » Administration
- » Banking
- » Business analysis / development
- » Business management
- » Communications
- » Computing
- » Financial management
- » Human resource management
- » International business
- » International marketing
- » Management consultancy
- » Marketing
- » Recruitment and staff development
- » Sales

Professional Experience

Students are required to complete one 15 day professional experience placement, normally in the second year of the program. It focuses on a period of personal service in a community organisation. Students who opt to undertake additional Professional Experience electives will have the opportunity to specialise and gain insight into identified future career areas, and hone their skills and opportunities with a view to eventual post-university full-time employment.

Graduate Certificate in Business Administration

Graduate Diploma in Business Administration

Master of Business Administration

Master of Business Administration (Advanced)

LOCATION

North Sydney, Melbourne

DURATION

Graduate Certificate
1 semester full-time

Graduate Diploma
1 year full-time

Master
1.5 years full-time

Master-Advanced
2 years full-time

COMMENCEMENT

February, July

Admission Requirements

- » the equivalent of an Australian three year Bachelor Degree in any discipline; or
- » at least two (2) years professional experience in management/leadership positions

Course Aims

These courses are designed to provide students with the basic building blocks needed to become an effective manager in a variety of organisational settings. It is a broad-based, postgraduate degree rather than a technical qualification required for a particular job or vocation. The goal of the program is to provide students with the foundations in content and competencies that will support their development as effective managers in a variety of organisational settings and roles.

The Master of Business Administration aims to build upon students' undergraduate study through examination of the key dimensions of business operational tasks and processes in an environment of rapid change. It is intended to enable students to:

- » Understand management processes in organisations in the private and public sectors;

- » Acquire a deeper knowledge of theoretical, conceptual and ethical issues applying to the business processes;
- » Analyse, evaluate, and justify business processes in a changing environment;
- » Develop business management skills; and
- » Develop effective ethical understanding of problems in organisations.

Course Structure

Graduate Certificate

Students will complete a total of 40 credit points comprising:

- » Any Core Units from the Master of Business Administration

Graduate Diploma

Students will complete a total of 80 credit points comprising:

- » Core Units (40cp); and
- » Coursework Elective Units (40cp).

Master

Students will complete a total of 120 credit points, comprising:

- » Core Units (90cp); and
- » Elective Units from any postgraduate business course (30cp).

Core Units

- » Accounting for Decision Making
- » Corporate Governance and Social Responsibility
- » Ethical Leadership in Organisations
- » Finance and Quantitative Methods
- » Managerial Economics in a Global Environment
- » Marketing Management
- » Operations and Information Systems
- » Organisational Dynamics and Behaviour
- » Strategic Management for Sustainability

Master (Advanced)

Students will complete a total of 160 credit points, comprising:

- » Core Units (130cp); and
- » Electives Units chosen from any postgraduate Business course (30cp).

Core Units

- » Accounting for Decision Making
- » Business Research Project
- » Corporate Governance and Social Responsibility
- » Ethical Leadership in Organisations
- » Finance and Quantitative Methods
- » Managerial Economics in a Global Environment
- » Marketing Management
- » Operations and Information Systems
- » Organisational Dynamics and Behaviour
- » Research Methods
- » Strategic Management for Sustainability

Further Study

The Master of Business Administration articulates into the following programs:

- » Master of Accounting / Master of Business Administration
- » Master of Business Information Systems/ Master of Business Administration
- » Master of Human Resource Management/ Master of Business Administration
- » Master of Marketing / Master of Business Administration
- » Master of Business Administration (Advanced)



Business Information Systems	Brisbane	North Sydney	Strathfield	Canberra	Ballarat	Melbourne	Duration	Commencement
Bachelor of Business Information Systems		•					3	Feb/Jul
Graduate Certificate in Business Information Systems		•					½	Feb/Jul
Graduate Diploma in Business Information Systems		•					1	Feb/Jul
Master of Business Information Systems		•					1½	Feb/Jul
Master of Business Information Systems (Advanced)		•					2	Feb/Jul
Master of Business Information Systems/ MBA		•					2	Feb/Jul

Bachelor of Business Information Systems

LOCATION

North Sydney

DURATION

3 years full-time

COMMENCEMENT

February, July

Admission Requirements

- » the equivalent of Australian Year 12 certificate

Course Aims

The study of Business Information Systems goes beyond computer hardware and software. This course will appeal to you if you are interested in learning how organisations work and how to develop and integrate information systems to support the needs of decision makers.

Professional Recognition

The course has provisional professional level accreditation with the Australian Computer Society.

Course Structure

Students are required to complete a total of 240 credit points, consisting of:

- » Core Units (110cp);
- » Major in E-Business (80cp);
- » Elective Units (50cp); and
- » Professional Experience A.

Core Units

- » Application Development 1
- » Application Development 2
- » Business Data Analysis
- » Fundamentals of Business IS
- » Information Systems Project or Professional Experience B
- » Management and People
- » Principles of Accounting
- » Principles of Marketing
- » Professional Ethics
- » Project Management
- » Reasoning and Communication

Professional Experience

Students are required to complete one 15 day professional experience placement, normally in the second year of the program. It focuses on a period of personal service in a community organisation. Students who opt to undertake additional Professional Experience electives will have the opportunity to specialise and gain insight into identified future career areas, and hone their skills and opportunities with a view to eventual post-university full-time employment.

Professional Experience

Students are required to complete one 15 day professional experience placement, normally in the second year of the program. It focuses on a period of personal service in a community organisation. Students who opt to undertake additional Professional Experience electives will have the opportunity to specialise and gain insight into identified future career areas, and hone their skills and opportunities with a view to eventual post-university full-time employment.

Career Paths

- » Business analysts
- » Database administrators
- » IS auditors
- » IT consultants and project leaders
- » IT trainers or educators
- » Network managers
- » Programmers
- » Sales and marketing managers
- » Software engineers
- » Systems programmers
- » Technical support

Further Study

On completion of this degree eligible students may apply for an Honours year.

Graduate Certificate in Business Information Systems

Graduate Diploma in Business Information Systems

Master of Business Information Systems

Master of Business Administration Information Systems (Advanced)

LOCATION

North Sydney

DURATION

Graduate Certificate
1 semester full-time

Graduate Diploma
1 year full-time

Master
1.5 years full-time

Master-Advanced
2 years full-time

COMMENCEMENT

February, July

Admission Requirements

- » the equivalent of an Australian three year Bachelor Degree in any discipline; or
- » at least two (2) years professional experience in management/leadership positions

Course Aims

These courses aim to provide a relevant and innovative introductory program to address the need for both Information Technology (IT) and non-IT professionals to increase their breadth and depth of knowledge in Business Information Systems.

Professional Recognition

This Master of Business Information Systems is accredited at a professional level by the Australian Computer Society (ACS). Depending on a student's work experience history, graduates will be able to apply for admission to the ACS at the grade of Member or Provisional Member.

Course Structure

Graduate Certificate

Students will complete a total of 40 credit points, comprising:

- » 40cp from Master of Business Information Systems Units, including at least 30cp of ISYS Units.

Graduate Diploma

Students will complete a total of 80 credit points, comprising:

- » MGMT638 Ethical Leadership in Organisations (10cp);
- » At least 40cp from Core Master of Business Information Systems Units; and
- » Up to 30cp from other MBIS Units, including at least 20cp of ISYS Units.

Master

Students will complete a total of 120 credit points, comprising:

- » Core Units (60cp);
- » Elective Units from Information Systems (30cp); and
- » Elective Units from Business Administration (30cp).

Master (Advanced)

Students will complete a total of 160 credit points, comprising:

- » Core Units (100cp); and
- » Elective Units from Information Systems (30cp) and Business Administration (30cp).

Core Units

- » Business Software Design
- » Database Systems
- » Enterprise Resource Planning
- » Ethical Leadership in Organisations
- » Operations and Information Systems
- » Project Management

Elective Units

Information Systems A

- » IT Infrastructure
- » Systems Development Methodologies

Information Systems B

- » E-Business
- » E-Marketing
- » Knowledge Management
- » Web Technologies and Design

Business Administration

- » Accounting for Decision Making
- » Corporate Governance and Social Responsibility
- » Finance and Quantitative Methods
- » Managerial Economics in a Global Environment
- » Marketing Management
- » Organisational Dynamics and Behaviour
- » Strategic Management for Sustainability

Further Study

The Graduate Certificate and Graduate Diploma in Business Information Systems articulate into the following program:

- » Master of Business Information Systems

The Master of Business Information Systems articulates into the following programs:

- » Master of Business Information Systems/ MBA
- » Master of Business Information Systems (Advanced)

Career Paths

- » Business analyst
- » Database administrator
- » IS auditor
- » IT consultants and project leader
- » IT trainers or educator
- » Network manager
- » Programmer
- » Sales and marketing manager

Master of Business Information Systems/Master of Business Administration

LOCATION

North Sydney

DURATION

2 years full-time

COMMENCEMENT

February, July

Admission Requirements

- » the equivalent of an Australian three year Bachelor Degree in any discipline

Course Aims

The Master of Business Information Systems/ Master of Business Administration dual degree aims to combine the requirements of both masters programs. The Master of Business Information Systems provides a relevant and innovative program to address the need for both Information Technology (IT) and non-IT professionals to increase their breadth and depth of knowledge in Business Information Systems. Students gain an understanding of the strategic significance of information systems in driving competitive strategies and organisational change. The goal of the program is to provide students with the foundations in content and competencies that will support their development as effective managers in a variety of organisational settings and roles.

Professional Recognition

The Master of Business Information Systems/ MBA is accredited at a professional level by the Australian Computer Society (ACS). Depending on a student's work experience history, graduates will be able to apply for admission to the ACS at the grade of Member or Provisional Member.

Course Structure

Students will complete a total of 160 credit points, comprising:

- » Core Units (120cp)
- » Elective Units from Information Systems (40cp)

A student who has not completed an undergraduate degree in Information Systems or a related discipline must include 20 credit points from Group A Information Systems Electives Units.

Commerce	Brisbane	North Sydney	Strathfield	Canberra	Ballarat	Melbourne	Duration	Commencement
Bachelor of Commerce	•	•				•	3	Feb/Jul
Bachelor of Commerce/Bachelor of Information Systems		•					4	Feb/Jul

Bachelor of Commerce

LOCATION

Brisbane, North Sydney, Melbourne

DURATION

3 years full-time

COMMENCEMENT

February, July

Admission Requirements

- » the equivalent of Australian Year 12 certificate

Course Aims

This course prepares students for entry-level employment and future managerial positions. It develops understanding of, and proficiency in, the principles of business required in a variety of commercial, industrial and service organisations including agencies across all levels of government, and a variety of non-profit bodies. Major areas of study include accounting, financial services, human resource management, information systems and marketing.

Professional Recognition

Students who complete a major in Business Information Systems are eligible for membership of the (ACS) Australian Computer Society (provisional).

Students who complete a major in Human Resource Management are eligible for membership of (AHRI) Australian Human Resources Institute.

Students who complete the Marketing major may apply for membership of the (AMI) Australian Marketing Institute.

Course Structure

Students are required to complete a total of 240 credit points, consisting of:

- » Core Units (110cp);
- » Major (80cp);
- » Elective Units (50cp); and
- » One Professional Experience Unit.

Core Units

- » Applied Business IS
- » Business Data Analysis
- » Business Economics
- » Fundamentals of Business IS
- » Introduction to Law
- » Management and People
- » Principles of Accounting
- » Principles of Marketing
- » Professional Ethics
- » Reasoning and Communication
- » Strategic Management

Majors

Majors	Brisbane	North Sydney	Melbourne
Human Resource Management	Yes	Yes	Yes
Business Information Systems	-	Yes	-
Marketing	Yes	Yes	Yes
Hospitality Management Tourism	Only available to approved articulating students		

Professional Experience

Students are required to complete one 15 day professional experience placement, normally in the second year of the program. It focuses on a period of personal service in a community organisation. Students who opt to undertake additional Professional Experience electives will have the opportunity to specialise and gain insight into identified future career areas, and hone their skills and opportunities with a view to eventual post-university full-time employment.

Career Paths

Graduate career opportunities arise in both the private and public sectors and cover a wide range of occupations:

- » Advertising
- » Computer hardware and software
- » Employment relations
- » Financial management
- » Human resource management
- » International trade and investment
- » Marketing management
- » Marketing research
- » Policy administration
- » Retailing and wholesaling

Bachelor of Commerce/ Bachelor of Business Information Systems

LOCATION

North Sydney

DURATION

4 years full-time

COMMENCEMENT

February, July

Admission Requirements

- » the equivalent of Australian Year 12 certificate

Course Aims

The Bachelor of Commerce/Bachelor of Business Information Systems dual degree aims to provide both technical skills in technology-based information systems and skills development in a specific business major. It provides a general focus on managerial decision-making, business and personal leadership, the ethics of values-based management, and relevant work experience. It is designed for students who wish to combine the benefits of technical skills that are now much sought after in the business information systems industry with majors in accounting, financial services, human resource management or marketing.

Professional Recognition

The Accounting major (including the units Company Law and Taxation Law) is accredited with CPA Australia and the Institute of Chartered Accountants in Australia.

The Human Resource Management major is accredited with the Australian Human Resource Institute.

Graduates of the Bachelor of Commerce with a Marketing major are eligible for membership with the Australian Marketing Institute.

The Business Information Systems major is accredited with the Australian Computer Society (provisional).

Course Structure

Students are required to complete a total of 320 credit points consisting of:

- » Core Units from the Bachelor of Commerce/Bachelor of Business Information Systems (140cp)
- » Major from the Bachelor of Commerce, in Accounting, Human Resource Management, Marketing, Financial Services (Sydney only) (80cp)
- » Major from the Bachelor of Business Information Systems in E-Business (80cp)
- » 20 credit points from either degree, providing prerequisite and co-requisite requirements are met. Students taking an Accounting major must complete BAFN200 Principles of Finance
- » Professional Experience A

Career Paths

- » Accountancy
- » Advertising
- » Business systems analysis

Core Units

- » Application Development 1
- » Application Development 2
- » Business Data Analysis
- » Business Economics
- » Fundamentals of Business IT
- » Introduction to Law
- » Management and People
- » Principles of Marketing
- » Professional Ethics
- » Project Management
- » Reasoning and Communication
- » Strategic Management and Information Systems Project or
- » Professional Experience B



Human Resource Management	Brisbane	North Sydney	Strathfield	Canberra	Ballarat	Melbourne	Duration	Commencement
Bachelor of Human Resource Management	•	•				•	3	Feb/Jul
Graduate Certificate in Human Resource Management		•				•	½	Feb/Jul
Graduate Diploma in Human Resource Management		•				•	1	Feb/Jul
Master of Human Resource Management		•				•	1½	Feb/Jul
Master of Human Resource Management (Advanced)		•				•	2	Feb/Jul
Master of Human Resource Management/ MBA		•				•	2	Feb/Jul

Bachelor of Human Resource Management

LOCATION

Brisbane, North Sydney, Melbourne

DURATION

3 years full-time

COMMENCEMENT

February, July

Admission Requirements

- » the equivalent of Australian Year 12 certificate

Course Aims

The Bachelor of Human Resource Management is designed to provide the knowledge and transferable skills necessary to manage and sustain organisational human resources. This is achieved through innovative teaching and learning strategies that will demonstrate how to enhance organisational capabilities and assist the achievement of an organisation's goals in an efficient and effective manner.

The degree seeks to strategically integrate various HRM processes such as recruitment, selection and retention, learning and development, managing diversity, work/life balance, inclusiveness, workplace relations, negotiation, occupational health and safety, globalisation, innovation, remuneration, and employee engagement. The focus of this degree is on student-centred learning experiences which encourage active engagement in real case scenarios, including ethical dilemmas and visions for the future.

Professional Recognition

Students who complete the Bachelor of Human Resource Management are eligible for membership of the Australian Human Resources Institute (AHRI).

Course Structure

Students will complete a total of 240 credit points, comprising:

- » Core Units (200cp);
- » Elective Units (40cp); and
- » Professional Experience.

Core Units

- » Applied Business IS
- » Business Data Analysis
- » Business Economics
- » Contemporary Issues in HRM
- » Employment Law
- » Employment Relations
- » Fundamentals of Business IS
- » Human Resource Development
- » International HRM
- » Introduction to Law
- » Management and People
- » Organisational Behaviour
- » Organisational Change
- » Performance Management
- » Principles of Accounting
- » Principles of Marketing
- » Professional Experience B
- » Professional Ethics
- » Reasoning and Communication
- » Strategic Management

Professional Experience

Students undertake one unit of compulsory volunteer experience and at least one unit of professional industry experience in Human Resource Management.

Professional Experience

Students are required to complete one 15 day professional experience placement, normally in the second year of the program. It focuses on a period of personal service in a community organisation. Students who opt to undertake additional Professional Experience electives will have the opportunity to specialise and gain insight into identified future career areas, and hone their skills and opportunities with a view to eventual post-university full-time employment.

Career Paths

- » Employment relations
- » Corporate training
- » Training and development consultancy
- » Human capital consultancy
- » Recruitment
- » Industrial relations
- » Occupational health and safety
- » International human resource management

Graduate Certificate in Human Resource Management

Graduate Diploma in Human Resource Management

Master of Human Resource Management

Master of Human Resource Management (Advanced)

LOCATION

North Sydney, Melbourne

DURATION

Graduate Certificate
1 semester full-time

Graduate Diploma
1 year full-time

Master
1.5 years full-time

Master-Advanced
2 years full-time

COMMENCEMENT

February, July

Admission Requirements

- » the equivalent of an Australian three year Bachelor Degree in any discipline; or
- » at least two (2) years professional experience in management/leadership positions

Course Aims

The aim of these courses is to provide practicing human resource management (HRM) professionals and those wishing to enter the profession with a quality practical and theoretical understanding of HRM.

Professional Recognition

Students who complete the Master of Human Resource Management are eligible for membership of the Australian Human Resources Institute (AHRI).

Course Structure

Graduate Certificate

Students will complete a total of 40 credit points, comprising:

- » Organisational Dynamics and Behaviour;
- » 30cp from any other Master of Human Resource Management Units, including at least 10cp from HRMG coded Units.

Graduate Diploma

Students will complete a total of 80 credit points, comprising:

- » Corporate Governance and Social Responsibility OR MGMT638 Ethical Leadership in Organisations (10cp);
- » Human Resource Management and Organisational Dynamics and Behaviour (20cp);
- » 40cp from other Core Units; and
- » Up to 10cp from Elective Units.

Master

Students will complete a total of 120 credit points, comprising:

- » Core Units (100cp);
- » Elective Units from Business Administration (10cp); and
- » Elective Units from Human Resource Management (10cp).

Master (Advanced)

Students will complete a total of 160 credit points, comprising:

- » Core Units (140cp); and
- » Elective Units from Business Administration (10cp) and Human Resource Management (10cp).

Core Units

- » Corporate Governance and Social Responsibility
- » Contemporary Issues of HRM
- » Ethical Leadership in Organisations
- » Human Resource Management
- » International HRM and Diversity
- » Workplace Relations
- » Management of Change
- » Organisational Dynamics and Behaviour
- » Strategic Human Resource Management
- » Strategic Management for Sustainability

Career Paths

- » Employment relations
- » Human resource management
- » Policy administration

Master of Human Resource Management/Master of Business Administration

LOCATION

North Sydney, Melbourne

DURATION

2 years full-time

COMMENCEMENT

February, July

Admission Requirements

- » the equivalent of an Australian three year Bachelor Degree in any discipline

Course Aims

The Master of Human Resource Management / Master of Business Administration dual degree aims to combine the requirements of both masters programs. The aim of the Master of Human Resource Management is to provide practicing human resource management professionals and those wishing to enter the profession with a quality practical and theoretical understanding of human resource management (HRM).

Professional Recognition

Students who complete the Master of Human Resource Management/MBA are eligible for membership of the Australian Human Resources Institute (AHRI).

Course Structure

Students will complete a total of 160 credit points, comprising:

- » Core Units (140cp); and
- » Elective Units (20cp)



Information Technology	Brisbane	North Sydney	Strathfield	Canberra	Ballarat	Melbourne	Duration	Commencement
Bachelor of Information Technology		•					3	Feb/Jul
Graduate Certificate in Information Technology		•					½	Feb/Jul
Graduate Diploma in Information Technology		•					1	Feb/Jul
Master of Information Technology		•					1½	Feb/Jul
Master of Information Technology (Advanced)		•					2	Feb/Jul

Bachelor of Information Technology*

LOCATION

North Sydney

DURATION

3 years full-time

COMMENCEMENT

February, July

Admission Requirements

- » To be eligible for admission to the course, an applicant must have completed at least a Diploma in Information Technology undertaken at an Australian Registered Training Organisation or a program meeting the equivalent of a diploma under the Australian Quality Framework.

Course Aims

The Bachelor of Information Technology prepares students for a variety of occupations in information technology. Emphasis is placed on the role of computer technologies in contemporary organisations. The study of information technology puts a focus on computer hardware and software and involves understanding the processes for analysing, designing, building, testing and implementing computer-based systems to support the needs of individuals, organisations and society. Students learn the analytical and technical skills together with the human and business skills needed in an organisation. Students complete one unit of approved professional experience.

The generic skills and foundation knowledge in Information Technology will provide graduates with the flexibility required to develop their careers in a rapidly changing environment. In line with the Mission of the University, graduates will also understand the ethical and social implications of the use and development

of Information Technology. In addition to these fundamentals, the course also develops advanced knowledge and skills in Information Technology of direct relevance to current industry practices.

Course Structure

Students are required to complete a total of 240 credit points, consisting of:

- » Core Units (70cp);
- » IT major (80cp);
- » IT Elective Units (40cp);
- » Elective Units (50cp); and
- » BIPX100 Professional Experience A.

Core Units

- » Applied Business IS
- » Business Analysis 1
- » Fundamentals of Business IS
- » IT Infrastructure
- » Professional Ethics
- » Project Management
- » Reasoning and Communications

*Note: This course is only available as an articulating pathway with specific providers.

Professional Experience

Students are required to complete one 15 day professional experience placement, normally in the second year of the program. It focuses on a period of personal service in a community organisation. Students who opt to undertake additional Professional Experience electives will have the opportunity to specialise and gain insight into identified future career areas, and hone their skills and opportunities with a view to eventual post-university full-time employment.

Graduate Certificate in Information Technology

Graduate Diploma in Information Technology

Master of Information Technology

LOCATION

North Sydney

DURATION

Graduate Certificate
1 semester full-time

Graduate Diploma
1 year full-time

Master
1.5 years full-time

COMMENCEMENT

February, July

Admission Requirements

- » the equivalent of an Australian three year Bachelor Degree in any discipline

Course Aims

The Graduate degrees in Information Technology aim to provide a relevant and innovative program to address the need for Information Technology (IT) and non-IT professionals to increase their breadth and depth of knowledge in IT. The course offers a targeted degree that allows students to understand the impact of the application of information technology in a business environment. Students gain an understanding of the strategic significance of computer-based information systems in driving competitive strategies and organisational change. The courses examine the significance of both technological and organisational issues in the analysis, design, development and deployment of IT solutions for sustainable business.

The generic skills and foundation knowledge in Information Technology will provide graduates with the flexibility required to develop their careers in a rapidly changing environment. In line with the Mission of the University, graduates will also understand the ethical and social implications of the use and development of Information Technology. In addition to these fundamentals, the courses also develop advanced knowledge and skills in Information Technology of direct relevance to current industry practices.

Course Structure

Graduate Certificate

Students are required to complete a total of 40 credit points, consisting of:

- » ISYS Units (at least 30cp).

Graduate Diploma

- » Students are required to complete a total of 80 credit points, consisting of:
- » Ethical Leadership in Organisations (10cp); and
- » The Schedule of Unit Offerings for the Master of Information Technology including (70cp):
 - at least 40 cp from Core Units; and
 - up to 30 cp from other units including at least 20 cp from ISYS Units.

Master

Students are required to complete a total of 120 credit points, consisting of:

- » Core Units (60cp);
- » IS Elective Units (40cp); and
- » Elective Units (20cp).

Core Units

- » Ethical Leadership in Organisations
- » Enterprise Resource Planning
- » Database Systems
- » Operations and Information Systems
- » Project Management

Master of Information Technology (Advanced)

LOCATION

North Sydney

DURATION

2 years full-time

COMMENCEMENT

February, July

Admission Requirements

- » the equivalent of an Australian three year Bachelor Degree with a major in a computing/Information technology discipline; or
- » Bachelor degree in any discipline and a Graduate Certificate in Information Technology, Graduate Diploma in Information Technology or Master of Information Technology or equivalent

Course Aims

The Master of Information Technology (Advanced) aims to provide a relevant and innovative program to address the need for Information Technology (IT) and non-IT professionals to increase their breadth and depth of knowledge in IT. The course offers a targeted degree that allows students to understand the impact of the application of information technology in a business environment and to expand on their knowledge by undertaking a significant project as part of

the course. Students gain an understanding of the strategic significance of computer-based information systems in driving competitive strategies and organisational change. The course examines the significance of both technological and organisational issues in the analysis, design, development and deployment of IT solutions for sustainable business.

The generic skills and foundation knowledge in Information Technology will provide graduates with the flexibility required to develop their careers in a rapidly changing environment. In line with the Mission of the University, graduates will also understand the ethical and social implications of the use and development of Information Technology. In addition to these fundamentals, the course also develops advanced knowledge and skills in Information Technology of direct relevance to current industry practices.

Course Structure

Students are required to complete a total of 160 credit points, consisting of:

- » Core Units (100cp);
- » IS Elective Units (40cp); and
- » Elective Units (20cp).

Core Units

- » Ethical Leadership in Organisations
- » Database Systems
- » Enterprise Resource Planning
- » Information Systems Research Project
- » Operations and Information Systems
- » Project Management
- » Research Methods
- » Web Technologies and Design

Elective Units

Group A

- » IT Infrastructure
- » Systems Development Methodologies

Group B

- » Business Software Design
- » E-Business
- » Knowledge Management



Marketing	Brisbane	North Sydney	Strathfield	Canberra	Ballarat	Melbourne	Duration	Commencement
Bachelor of Marketing	•	•				•	3	Feb/Jul
Graduate Certificate in Marketing		•				•	½	Feb/Jul
Graduate Diploma in Marketing		•				•	1	Feb/Jul
Master of Marketing		•				•	1½	Feb/Jul
Master of Marketing (Advanced)		•				•	2	Feb/Jul
Master of Marketing/MBA		•				•	2	Feb/Jul

Bachelor of Marketing

LOCATION

Brisbane, North Sydney, Melbourne

DURATION

3 years full-time

COMMENCEMENT

February, July

Admission Requirements

- » the equivalent of Australian Year 12 certificate

Course Aims

The Bachelor of Marketing is designed to give students the theoretical knowledge and practical skills needed for a stimulating career in marketing. Marketing plays a pivotal role in the success of any business. Students develop an understanding of consumer behaviour and the importance of market research and factors to consider when pricing, distributing and promoting products and services in different markets are studied. From this background students learn how to design, develop, implement and manage effective marketing strategies from an ethical marketing viewpoint.

Professional Recognition

Students who complete the Bachelor of Marketing are eligible to apply for membership to the Australian Marketing Institute (AMI).

Course Structure

Students will complete a total of 240 credit points, comprising:

- » Core Units (200cp);
- » Elective Units (40cp); and
- » Professional Experience.

Core Units

- » Applied Business IS
- » Business Data Analysis
- » Business Economics
- » Consumer Behaviour
- » E-Marketing
- » Fundamentals of Business IS
- » Introduction to Law
- » Principles of Accounting
- » International Marketing
- » Management and People
- » Marketing Communication
- » Marketing Research
- » Principles of Marketing
- » Professional Ethics
- » Professional Experience B
- » Reasoning and Communication
- » Retail Marketing
- » Services Marketing
- » Strategic Management
- » Strategic Marketing

Professional Experience

Students undertake one unit of compulsory volunteer experience and at least one unit of professional experience in Marketing.

Professional Experience

Students are required to complete one 15 day professional experience placement, normally in the second year of the program. It focuses on a period of personal service in a community organisation. Students who opt to undertake additional Professional Experience electives will have the opportunity to specialise and gain insight into identified future career areas, and hone their skills and opportunities with a view to eventual post-university full-time employment.

Career Paths

- » Advertising
- » Fundraising
- » Market research
- » Public relations
- » Sales

Graduate Certificate in Marketing

Graduate Diploma in Marketing

Master of Marketing

Master of Marketing (Advanced)

LOCATION

North Sydney, Melbourne

DURATION

Graduate Certificate
1 semester full-time

Graduate Diploma
1 year full-time

Master
1.5 years full-time

Master-Advanced
2 years full-time

COMMENCEMENT

February, July

Admission Requirements

- » the equivalent of an Australian three year Bachelor Degree in any discipline; or
- » at least two (2) years professional experience in management/leadership positions

Course Aims

These courses aim to provide students with knowledge of and expertise in the latest marketing techniques and technologies. From a solid foundation of marketing principles new students will learn how to think strategically about value, branding and positioning, and competitive advantage. Throughout the units, integration of the theory and practice of marketing is emphasised.

Professional Recognition

Students who complete the Master of Marketing are eligible to apply for membership to the (AMI) Australian Marketing Institute.

Course Structure

Graduate Certificate

Students will complete a total of 40 credit points, comprising:

- » Marketing Management (10cp); and
- » Other Master of Marketing Units (30cp).

Graduate Diploma

Students will complete a total of 80 credit points, comprising:

- » Core Master of Marketing Units (30cp);
- » Group A Business Administration Elective Units (at least 10cp); and
- » Any other Master of Marketing Units, including at least 20cp from MKTG Units (up to 40cp).

Master

Students will complete a total of 120 credit points, comprising:

- » Core Units (40cp);
- » Elective Units from Business Administration (40cp), including at least 10cp from Group A Business Administration; and
- » Elective Units from Marketing (40cp).

Master (Advanced)

Students will complete a total of 160 credit points, comprising:

- » Core Units (80cp);
- » Elective Units from Business Administration (40cp), including at least 10cp from Group A Business Administration; and
- » Elective Units from Marketing (40cp).

Core Units

- » Advanced Consumer Behaviour
- » Integrated Marketing Communication
- » Marketing Management
- » Strategic Marketing

Elective Units

Business Administration Group A

- » Ethical Leadership in Organisations
- » Corporate Governance and Social Responsibility

Business Administration Group B

- » Accounting for Decision Making
- » Finance and Quantitative Methods
- » Managerial Economics in a Global Environment
- » Organisational Dynamics and Behaviour
- » Operations and Information Systems
- » Strategic Management for Sustainability

Marketing

- » Advanced Consumer Behaviour
- » Brand Management
- » E-Marketing
- » International Marketing
- » Marketing Research
- » Services Marketing
- » Social Marketing

Further Study

The Graduate Certificate and Graduate Diploma in Marketing articulate into the following program:

- » Master of Marketing

The Master of Marketing articulates into the following programs:

- » Master of Marketing/MBA
- » Master of Marketing (Advanced)
- » Career Paths
- » Advertising

- » Marketing management
- » Marketing research
- » Retailing and wholesaling

Career Paths

- » Advertising
- » Marketing management
- » Marketing research
- » Retailing and wholesaling

Master of Marketing/ Master of Business Administration

LOCATION

North Sydney, Melbourne

DURATION

2 years full-time

COMMENCEMENT

February, July

Admission Requirements

- » the equivalent of an Australian three year Bachelor Degree in any discipline; or
- » at least two (2) years professional experience in management/leadership positions

Course Aims

The Master of Marketing/Master of Business Administration dual degree aims to combine the requirements of both masters programs. The Master of Marketing aims to provide students with knowledge of and expertise in the latest marketing techniques and technologies. From a solid foundation of marketing principles new students will learn how to think strategically about value, branding and positioning, and competitive advantage.

Professional Recognition

Students who complete the Master of Marketing/MBA are eligible to apply for membership to the (AMI) Australian Marketing Institute.

Course Structure

Students will complete a total of 160 credit points, comprising:

- » Core Units (120cp); and
- » Elective Units (40cp).

Core Units

- » Accounting for Decision Making
- » Advanced Consumer Behaviour
- » Corporate Governance and Social Responsibility
- » Ethical Leadership in Organisations
- » Finance and Quantitative Methods
- » Integrated Marketing Communication
- » Managerial Economics in a Global Environment
- » Marketing Management
- » Operations and Information Systems
- » Organisational Dynamics and Behaviour



FACULTY OF EDUCATION

- Early Childhood
- Primary
- Secondary
- Religious Education
- Educational Leadership

Education	Brisbane	North Sydney	Strathfield	Canberra	Ballarat	Melbourne	Duration	Commencement
Associate Degree in Early Childhood Education			•	•			2	Feb
Associate Degree in Inclusive Education and Disability Studies			•				2	Feb
Bachelor of Inclusive Education and Disability Studies			•				3	Feb
Bachelor of Education (Early Childhood and Primary)	•		•	•	•	•	4	Feb
Bachelor of Education (Primary)	•		•	•	•	•	4	/
Bachelor of Teaching (Early Childhood)			•	•			3	Feb/Jul
Bachelor of Teaching/Bachelor of Arts (Humanities)	•		•			•	4	Feb/Jul
Bachelor of Teaching/Bachelor of Arts (Mathematics)			•			•	4	Feb/Jul
Bachelor of Teaching/Bachelor of Arts (Technology)			•				4	Feb/Jul
Bachelor of Teaching/Bachelor of Arts (Visual Arts)			•				4	Feb/Jul
Graduate Diploma in Education (Secondary)	•		•	•		•	1	/
Master of Teaching (Primary)	•		•	•		•	2	/
Master of Teaching (Secondary)	•		•	•		•	2	/
Master of Education	•		•	•		•	1	Feb/Jul
Master of Educational Leadership	•		•	•		•	1	Feb/Jul

/ Midyear intake available in some locations only.

Associate Degree in Early Childhood Education

LOCATION

Strathfield, Canberra

DURATION

2 years full-time

COMMENCEMENT

February

Admission Requirements

- » the equivalent of Australian Year 12 certificate;
- » pre-requisites may also apply for entry into some major and minor sequences;
- » students completing an Australian Year 12 in NSW, must have the equivalent of Band 2 Mathematics

Course Aims

This course is for students wishing to qualify to work in a range of centres and schools caring for children aged from birth to 5 years. You will learn about the developmental and educational needs of young children, gain special awareness of children with disabilities as well as background knowledge of the key curriculum areas of literacy, mathematics and science.

Professional Recognition

Graduates are eligible to be employed in NSW and ACT as Primary Contact Staff Member for Children under 2 and Authorised Supervisor.

Course Structure

Students will complete a total of 160 credit points, comprising:

- » Education Studies (70cp);
- » Curriculum Foundation Studies (40cp);
- » Curriculum and Pedagogy (30cp)
- » Elective Units (20cp); and
- » Professional Experience Units.

Professional Experience

Students accepting a place in this course are required to participate in a number of professional placements throughout their program.

In order to participate in professional experience it is the responsibility of each student to ensure that they are able to complete successfully the child protection screening required in their state. Requirements for working with children: All students enrolled must have the appropriate approvals before they may enter a classroom. International students must bring police check documentation from their own countries.

Students, who are not cleared for working with children and therefore not able to be placed in a compulsory professional placement, will not be able to complete their course.

Career Paths

- » Students are eligible to work in Early Childhood centres in Australia or overseas.

Associate Degree in Inclusive Education and Disability Studies

LOCATION

Strathfield

DURATION

2 years full-time

COMMENCEMENT

February

Course Aims

This course provides the opportunity for students to prepare for a career in the disability field or human services. You will learn how to provide specialised care and support for people with disabilities and help empower people of all ages with the education and support they need to achieve their potential.

Bachelor of Inclusive Education and Disability Studies

LOCATION

Strathfield

DURATION

3 years full-time

COMMENCEMENT

February

Course Aims

Qualify with a holistic view of disability and the social structures that influence learning and development for people with a disability. This includes theoretical frameworks for understanding disability, social justice and empowerment, advocacy, influence of disability on learning, social dynamics and positive behaviour support.

Bachelor of Education (Early Childhood and Primary)

LOCATION

Brisbane, Strathfield, Canberra, Ballarat, Melbourne

DURATION

4 years full-time

COMMENCEMENT

February

Admission Requirements

- » the equivalent of Australian Year 12 certificate
- » pre-requisites may also apply for entry into some major and minor sequences

Students completing an Australian Year 12 in NSW who do not achieve Band 4 in two units of English and Mathematics will be required to complete concurrent literacy and numeracy units within their program of study.

Course Aims

Gain the professional knowledge and skills that will enable you to support young children in the crucial formative stages of their development and learning. This course is designed to develop both teachers for early childhood settings and generalist primary teachers with particular strengths in literacy, mathematics, science and technology. The course includes studies in early childhood specialties preparing teachers for practice in early childhood education. Students can select a study pattern to meet the requirement to teach in Catholic, independent and government schools. There are rich opportunities for extensive professional experiences in schools and early childhood settings, from the first year of the program, providing you with the opportunity of experiencing the practical vitality and reality of the classroom.

Professional Recognition

Graduates are eligible for registration as a primary school teacher and accreditation to teach in government, independent and Catholic schools. Graduates are eligible to be employed in New South Wales as Primary Contact Staff members for children under 2, Authorised Supervisors and Teaching Staff members in 0-5 centres.

Teacher registration requires students to meet the English language requirements in their state. It is the student's responsibility to develop their English language skills during their candidature to ensure that they meet the registration guidelines which usually require a score of at least 7.0 in each of the IELTS bands and 7.5 - 8 in some states.

Course Structure

Students are required to complete a total of 320 credit points, consisting of:

- » Education Studies (110cp);
- » Curriculum Foundation Studies (70cp);
- » Curriculum and Pedagogy (80cp);
- » Elective Units (60cp); and
- » Professional Experience Units.

Professional Experience

In order to participate in professional experience it is the responsibility of each student to ensure that they are able to successfully complete the child protection screening required in their state.

Requirements for working with children: All students enrolled must have the appropriate approvals before they may enter a classroom. These are: Blue Card (Qld), Working with Children Check (ACT, NSW and Vic).

International students must bring police check documentation from their own countries. Students who are not cleared for working with children and therefore not able to be placed in a compulsory professional placement, will not be able to complete their course. In addition, students in Victoria must obtain and present their relevant police check from their home country and from any other country/ies where they have been domiciled for twelve months or more in the last ten years. These police checks must be sighted and authenticated before students will be permitted to undertake professional experience in schools.

Career Paths

- » Graduates are qualified to teach children from prior to school settings, such as long day care and pre-schools, and the early years of school to the end of primary school.
- » Work in Australia or overseas
- » Early childhood teacher or group leader
- » Primary teacher
- » Educational administrator

Bachelor of Education (Primary)

LOCATION

Brisbane, Strathfield, Canberra, Ballarat, Melbourne

DURATION

4 years full-time

COMMENCEMENT

February, July*

*July entry unavailable in Strathfield, Ballarat or Melbourne

Admission Requirements

- » the equivalent of Australian Year 12 certificate

Pre-requisites may also apply for entry into some major and minor sequences.

Students completing an Australian Year 12 in NSW who do not achieve Band 4 in two units of English and Mathematics will be required to complete concurrent literacy and numeracy units within their program of study.

Course Aims

Primary school teaching is an energising and exciting profession that utilises a variety of skills. These include creativity, organisation and administration combined with strong interpersonal and communication skills. ACU has a long-held reputation as a leading provider of quality teacher education.

The course prepares you to teach in all sectors – government, independent and Catholic schools. You will gain a degree with a reputation of high academic rigour that meets accreditation standards and strengths in the national priorities of literacy, numeracy, science and technology.

Professional Recognition

Graduates are eligible for registration as a primary school teacher and accreditation to teach in government, independent and Catholic schools.

Teacher registration requires students to meet the English language requirements in their state. It is the student's responsibility to develop their English language skills during their candidature to ensure that they meet the registration guidelines, which usually require a score of at least 7.0 in each of the IELTS bands and 7.5 - 8 in some states.

“ACU is a friendly and supportive University. Teachers help students with any problems. As well it’s easy to make friends.”

Abdullah Sahin, Turkey

Bachelor of Teaching/Bachelor of Arts



Course Structure

Students will complete a total of 320 credit points, comprising:

- » Education Studies (60cp);
- » Curriculum Foundation (100cp) Studies, consisting of:
 - Indigenous Studies (10cp);
 - Theology (30cp); or
 - Lutheran Education (30cp); or, for students who do not seek accreditation to teach Religious Education, 20cp from Theology or Philosophy and 10cp from Elective Units;
 - Mathematics (20cp);
 - English (20cp);
 - Science (20cp);
- » Remaining credit points from Elective Units; and
- » Professional Experience.

Professional Experience

In order to participate in professional experience it is the responsibility of each student to ensure that they are able to successfully complete the child protection screening required in their state.

Requirements for working with children: All students enrolled must have the appropriate approvals before they may enter a classroom. These are: Blue Card (Qld), Working with Children Check (ACT, NSW and Vic).

International students must bring police check documentation from their own countries. Students who are not cleared for working with children and therefore not able to be placed in a compulsory professional placement, will not be able to complete their course. In addition, students in Victoria must obtain and present their relevant police check from their home country and from any other country/ies where they have been domiciled for twelve months or more for the last ten years. These police checks must be sighted and authenticated before students will be permitted to undertake a professional experience in schools.

Career Paths

- » Graduates are qualified to teach Primary School students
- » Work in Australia or overseas
- » Educational administrator

Bachelor of Teaching (Early Childhood)

LOCATION

Strathfield, Canberra

DURATION

3 years full-time

COMMENCEMENT

February, July

Admission Requirements

- » the equivalent of Australian Year 12 certificate
- » pre-requisites may also apply for entry into some major and minor sequences

Course Aims

This course will prepare you to teach in early childhood and prior-to-school settings, these include kindergartens, preschools and childcare centres. (Four year awards are mandatory to teach in schools). As a graduate, you will be skilled in teaching and also in the analysis and implementation of strategies and programs for the delivery of early childhood services. Students will be engaged in a holistic approach to learning, incorporating a genuine respect of all cultures, religions, traditions and history.

Professional Recognition

Graduates will be accredited for working in a variety of early childhood settings, including kindergartens, pre-schools and childcare centres.

Graduates are eligible to be employed in New South Wales as Primary Contact Staff member for children under 2, Authorised Supervisor and Teaching Staff member in 0-5 centres.

Course Structure

Students will complete a total of 240 credit points, comprising:

- » Education Studies (90cp);
- » Curriculum Foundation Studies (60cp);
- » Curriculum and Pedagogy (60cp);
- » Elective Units (30cp); and
- » Four Professional Experience Units.

Professional Experience

Students accepting a place in this course are required to participate in a number of professional placements throughout their program. In order to participate in professional experience it is the responsibility of each student to ensure that they are able to successfully complete the child protection screening required in their state. A Working with Children Check is compulsory for each student.

International students must bring police check documentation from their own countries. Students who are not cleared for working with children and therefore not able to be placed in a compulsory professional placement, will not be able to complete their course.

Career Paths

- » Early childhood teacher or group leader
- » Work in Australia or overseas
- » Primary carer 0 to 2 years
- » Authorised supervisor of early childhood centre
- » Director of a day care centre
- » Educational administrator

Bachelor of Teaching/ Bachelor of Arts (Humanities)

LOCATION

Brisbane, Strathfield, Melbourne

DURATION

4 years full-time

COMMENCEMENT

February, July

Bachelor of Teaching/Bachelor of Arts (Mathematics)

LOCATION

Strathfield, Melbourne

DURATION

4 years full-time

COMMENCEMENT

February, July

Bachelor of Teaching/Bachelor of Arts (Technology)

LOCATION

Strathfield

DURATION

4 years full-time

COMMENCEMENT

February, July

Bachelor of Teaching/Bachelor of Arts (Visual Arts)

LOCATION

Strathfield

DURATION

4 years full-time

COMMENCEMENT

February, July

Admission Requirements

- » the equivalent of Australian Year 12 certificate

Pre-requisites may also apply for entry into some major and minor sequences.

Students completing an Australian Year 12 in NSW who do not achieve Band 4 in two units of English and Mathematics will be required to complete concurrent literacy and numeracy units within their program of study.

Course Aims

This is a combined course satisfying the requirements for the Bachelor of Teaching and Bachelor of Arts. The course is designed for those intending to become teachers in secondary schools. A range of Bachelor of Arts sequences and units are available and students have a broad range of choice for their major and for one minor sequence. Students are advised to select at least one of these sequences from a main school teaching area. There is also a major Education sequence. The Bachelor of Teaching requirements foster the acquisition and development of the basic professional knowledge, skills and attitudes required by an effective classroom teacher. The inclusion of units in theology and religious education enables graduates to gain accreditation to teach religious education.

Course Structure

Humanities

- » Choice of two teaching methods (page 60);
- » Education and Curriculum studies; and
- » Internship

Mathematics

- » Complete a Major in Mathematics;
- » Complete another Major or extended Minor and elective from the teaching method table (page 60);
- » Education and Curriculum studies; and
- » Internship

Technology

- » Complete a Major in Technology;
- » Complete two Minors from the teaching method table (page 60);
- » Education and Curriculum studies; and
- » Internship

Visual Arts

- » Complete a Major in Visual Arts;
- » Complete a Minor from the teaching method table (page 60);
- » Education and Curriculum studies; and
- » Internship

Professional Experience

In order to participate in professional experience it is the responsibility of each student to ensure that they are able to successfully complete the child protection screening required in their state.

Requirements for working with children: All students enrolled must have the appropriate approvals before they may enter a classroom. These are: Blue Card (Qld), Working with Children Check (NSW and Vic).

International students must bring police check documentation from their own countries. Students who are not cleared for working with children and therefore not able to be placed in a compulsory professional placement, will not be able to complete their course. In addition, students in Victoria must obtain and present their relevant police check from their home country and from any other country/ies where they have been domiciled for twelve months or more for the last ten years. These police checks must be sighted and authenticated before students will be permitted to undertake a professional experience in schools.

Professional Experience

In order to participate in professional experience it is the responsibility of each student to ensure that they are able to successfully complete the child protection screening required in their state.

Requirements for working with children: All students enrolled must have the appropriate approvals before they may enter a classroom. These are: Blue Card (Qld), Working with Children Check (NSW and Vic).

International students must bring police check documentation from their own countries. Students who are not cleared for working with children and therefore not able to be placed in a compulsory professional placement, will not be able to complete their course. In addition, students in Victoria must obtain and present their relevant police check from their home country and from any other country/ies where they have been domiciled for twelve months or more for the last ten years. These police checks must be sighted and authenticated before students will be permitted to undertake a professional experience in schools.

Career Paths

- » Secondary school teacher
- » Work in Australia or overseas
- » Educational administrator
- » Group facilitator/market researcher
- » Government policy professional

More information

www.acu.edu.au/courses

Subject Area - Humanities	Brisbane	Strathfield	Melbourne
Business Studies/Economics	Major/Minor	Major/Minor	Major
Computing	-	Minor	-
Drama	Major/Minor	-	Minor
English Literature	Major/Minor	Major/Minor	Major/Minor
Geography	-	Major/Minor	-
History (Modern and Ancient)	Major/Minor	Major/Minor	Major/Minor
Music	Major/Minor	-	-
Mathematics	-	Minor	Major/Minor
Philosophy	-	-	Minor
Politics	-	-	Minor
Theological Studies/Study of Religions	Major/Minor	Major/Minor	Major/Minor
Sociology	-	-	Minor
Visual Arts	Major/Minor	Minor	-
Subject Area - Mathematics			
Business Studies/Economics	-	Major/Minor	Major/Minor
Computing	-	Minor	-
Drama	-	-	Minor
English Literature	-	Major/Minor	Major/Minor
Geography	-	Major/Minor	-
History (Modern and Ancient)	-	Major/Minor	Major/Minor
Mathematics	-	Major/Minor	Major/Minor
Philosophy	-	-	Minor
Theological Studies/Study of Religions	-	Major/Minor	Major/Minor
Visual Arts	-	Minor	-
Subject Area - Technology			
Computing	-	Minor	-
Mathematics	-	Minor	-
Technology	-	Major/Minor	-
Theological Studies/Study of Religions	-	Minor	-
Subject Area - Visual Arts			
Business Studies/Economics	-	Minor	-
Computing	-	Minor	-
English Literature	-	Minor	-
Geography	-	Minor	-
History	-	Minor	-
Mathematics	-	Minor	-
Theological Studies/Study of Religions	-	Minor	-

Graduate Diploma in Education (Secondary)

LOCATION

Brisbane, Strathfield, Canberra, Melbourne

DURATION

1 year full-time

COMMENCEMENT

February, July*

*July entry unavailable in Melbourne

Admission Requirements

- » the equivalent of an Australian three year Bachelor Degree

Students must also nominate two subject areas from the Teaching Methods table (page 62) for which, based on their Bachelor studies, they believe they are qualified to teach. The School of Education will assess students' suitability for these methods during the admissions process.

Course Aims

This course is for students who want to make a difference in society through secondary teaching. It enables you to develop knowledge and skills to teach in secondary schools in all sectors – government, independent and Catholic.

You will gain a degree with a reputation for high academic rigour that meets accreditation standards. With an emphasis on social justice, equity and values education this course caters for the learning needs of a diverse range of students.

Students who wish to teach Religious Education can combine this program with the Graduate Certificate in Religious Education.

Professional Recognition

Graduates are eligible for registration as a secondary school teacher and are accredited to teach in government, independent and Catholic schools.

Teacher registration requires students to meet the English language requirements in their state. It is the student's responsibility to develop their English language skills during their candidature to ensure that they meet the registration guidelines which usually require a score of at least 7.0 in each of the IELTS bands and 7.5 - 8 in some states.

Course Structure

Students are required to complete a total of 100 credit points, consisting of:

- » Education Studies Units (40cp);
- » Curriculum Studies Units (40cp); and
- » Two Professional Experience units consisting of a minimum of 45 days supervised teaching days and 20 days of community engagement.

Professional Experience

Students accepting a place in this course are required to participate in a number of professional placements throughout their program. In order to participate in professional experience it is the responsibility of each student to ensure that they are able to successfully complete the child protection screening required in their state. Requirements for working with children: All students enrolled must have the appropriate approvals before they may enter a classroom. These are: Blue Card (Qld), Working with Children Check (ACT, NSW and Vic). International students must bring police check documentation from their own countries. Students, who are not cleared for working with children and therefore not able to be placed in a compulsory professional placement, will not be able to complete their course.

In addition, students in Victoria must obtain and present their relevant police check from their home country and from any other country where they have been domiciled for twelve months or more in the last ten years. These police checks must be sighted and authenticated before students will be permitted to undertake professional experience in schools.

Course Strands

Education Studies

In the education studies strand, an integrated approach is taken to what has traditionally been described as foundation studies (for example, psychology, philosophy, sociology, Catholic schooling) and pedagogy, (for example, classroom management, planning, teaching in diverse settings, literacy and numeracy across the curriculum, adolescent health and well being). Some units have field-based and technology components associated with them.

Curriculum Studies

Normally, two curriculum units are selected from areas such as commerce/business studies/ accounting, English, mathematics, science, personal development and physical education, creative and performing arts, economics, geography, history, humanities, computing, technology, religious studies, legal studies, social sciences, languages other than English, religious education and visual arts. Please note that in some states, curriculum areas (eg science, mathematics, religious education, music and visual arts) may have double majors where students study four curriculum units in the one specialisation. Not all curriculum subjects are available on all campuses. For a list of available curriculum studies check the Course Enrolment Guide for this course.

Options to teach Religious Education

There are different pathways to qualify to teach religious education:

- » students with previous studies in theology are able to enrol in Religious Education Curriculum and Teaching units as part of the Graduate Diploma in Education (Secondary) course;
- » students without previous studies in theology seeking to teach religious education as their second teaching method may undertake the two theology units from the Graduate Certificate in Religious Education and the two religious education units from the Graduate Diploma in Education (Secondary) course. Awards: Graduate Diploma in Education (Secondary) and Graduate Certificate in Religious Education;
- » students seeking to have religious education as a third teaching method are able to enrol in the four units of the Graduate Certificate in Religious Education (two theology and two religious education). Awards: Graduate Diploma in Education (Secondary) and Graduate Certificate in Religious Education.

Career Paths

- » Secondary teacher working in Australia or overseas

Subject Area	Brisbane	Strathfield	Canberra	Melbourne
Accounting	Yes	-	-	-
Business Studies	Yes	-	-	-
Commerce and Business Studies	-	-	Yes	Yes
Biology	-	Yes	-	-
Chemistry	-	Yes	-	-
Computing	Yes	-	-	-
Dance	-	-	Yes	-
Drama	Yes	Yes	Yes	-
Economics and Business	Yes	Yes	-	-
English	Yes	Yes	Yes	Yes
English as a Second Language (ESL)	-	-	-	Yes
Film and Television	Yes	-	-	-
Geography	-	Yes	-	-
History	Yes	Yes	-	Yes
Humanities	-	-	-	Yes
Information & Communication Technology (ICT)	Yes	Yes	Yes	Yes
Language Other Than English (LOTE)	Yes	Yes	Yes	Yes
Legal Studies	Yes	Yes	-	-
Mathematics	Yes	Yes	Yes	Yes
Music	Yes	Yes	Yes	Yes
Personal Development, Health and Physical Education	Yes	Yes	-	Yes
Physical Education	Yes	-	-	Yes
Physics	-	Yes	-	-
Religious Education	Yes	Yes	Yes	Yes
Science	Yes	Yes	Yes	Yes
Society and Culture	-	Yes	-	-
Studies of Society and Environment (SOSE)	Yes	-	Yes	-
Technology	-	Yes	Yes	Yes
Visual Arts	Yes	Yes	Yes	Yes

The following subject areas may be available as double teaching methods:

- » Commerce and Business Studies (Melbourne)
- » Language Other Than English (Melbourne)
- » Mathematics (Melbourne)
- » Music (Strathfield and Melbourne)
- » Religious Education (Melbourne)
- » Science (Melbourne)
- » Visual Arts (Strathfield and Melbourne)

Master of Teaching (Primary)

LOCATION

Brisbane, Strathfield, Canberra,
Melbourne

DURATION

2 years full-time

COMMENCEMENT

February, July*

*July entry unavailable in Melbourne

Admission Requirements

- » the equivalent of an Australian three year Bachelor Degree

In NSW applicants must meet guidelines set by the NSW Institute of Teachers which require completed discipline studies in:

- » Four Key Learning Areas for two semesters;
- » Two Key Learning Areas for two semesters; and
- » One Key Learning Area for 4 semesters.

For further information, visit:

www.nswteachers.nsw.edu.au

Course Aims

The Master of Teaching (Primary) is a two-year degree course designed for applicants with an appropriate undergraduate degree who wish to become teachers in a primary school. It provides a pre-service education for beginning teachers. Graduates are eligible for employment in Catholic, government and non-government schools. The degree requires domestic and international candidates to analyse their context and to address many socio-cultural issues that will stimulate positive interaction and dialogue between the university and the professional field.

The course consists of studies in education and specific curriculum studies covering all teaching areas of primary schools. The course is concerned with the application of advanced knowledge and research findings to the problems, issues and challenges that face education professionals. The course aims to prepare professionals who are reflective, independent and flexible thinkers who are open to new ideas, and who will be capable of applying their knowledge and skills to improve curriculum offerings.

Students who undertake the Master of Teaching (Primary) may also concurrently complete the Graduate Certificate in Religious Education to graduate with both awards and to be eligible to gain accreditation to teach religious education in Catholic schools (refer to Religious Education).

Professional Recognition

Graduates are eligible for registration as a primary school teacher and are accredited to teach in government, independent and Catholic schools.

Teacher registration requires students to meet the English language requirements in their state. It is the student's responsibility to develop their English language skills during their candidature to ensure that they meet the registration guidelines which usually require a score of at least 7.0 in each of the IELTS bands and 7.5 - 8 in some states.

Course Structure

Students are required to complete a total of 160 credit points, consisting of:

- » Education Studies Units (40cp);
- » Curriculum Studies Units (80cp);
- » Elective Units (20cp);
- » Research Units (20cp); and
- » Four Professional Experience Units consisting of a minimum of 100 days practicum and research in the field.

Professional Experience

Students accepting a place in this course are required to participate in a number of professional placements throughout their program. In order to participate in professional experience it is the responsibility of each student to ensure that they are able to successfully complete the child protection screening required in their state.

Requirements for working with children: All students enrolled must have the appropriate approvals before they may enter a classroom. These are: Blue Card (Qld), Working with Children Check (ACT, NSW and Vic). International students must bring police check documentation from their own countries. Students who are not cleared for working with children and therefore not able to be placed in a compulsory professional placement, will not be able to complete their course.

In addition, students in Victoria must obtain and present their relevant police check from their home country and from any other country where they have been domiciled for twelve months or more in the last ten years. These police checks must be sighted and authenticated before students will be permitted to undertake Professional Experience in schools.

Career Paths

- » Primary School Teacher
- » Work in Australia or overseas
- » The Master of Teaching (Primary) is a pathway to doctoral studies

Master of Teaching (Secondary)

LOCATION

Brisbane, Strathfield, Canberra,
Melbourne

DURATION

2 years full-time

COMMENCEMENT

February, July*

*July entry unavailable in Melbourne

Admission Requirements

- » the equivalent of an Australian three year Bachelor Degree

Students must also nominate two subject areas from the Teaching Methods table (page 62) for which, based on their Bachelor studies, they believe they are qualified to teach. The School of Education will assess the student's suitability for these methods during the admissions process.

Course Aims

This course is for students who want to make a difference in society through secondary teaching. It enables you to develop knowledge and skills to teach in secondary schools in all sectors – government, independent and Catholic. You will gain a degree with a reputation for high academic rigour that meets accreditation standards. Students who wish to teach Religious Education can combine this program with the Graduate Certificate in Religious Education.

The course provides a particular focus on enabling participants to adopt a research-based approach to reflective practice and to consider the implications and applications of such an approach to their own professional development and to its contribution to the learning and wellbeing of those whom they teach.

Students who undertake the Master of Teaching (Secondary) may also concurrently complete the Graduate Certificate in Religious Education to graduate with both awards and to be eligible to gain accreditation to teach religious education in Catholic schools (refer to Religious Education).

Professional Recognition

Graduates are eligible for registration as a secondary school teacher and are accredited to teach in government, independent and Catholic schools.

Teacher registration requires students to meet the English language requirements in their state. It is the student's responsibility to develop their English language skills during their candidature to ensure that they meet the registration guidelines which usually require a score of at least 7.0 in each of the IELTS bands and 7.5 - 8 in some states.

Course Structure

Students are required to complete a total of 160 credit points consisting of:

- » Education Studies Units (40cp);
- » Curriculum Units (40cp);
- » Core Units (50cp);

- » Elective Units (10cp); and
- » Professional Experience consisting of a minimum of 60 days practicum and research in the field (20cp).

Professional Experience

Students accepting a place in this course are required to participate in a number of professional placements throughout their program.

In order to participate in professional experience it is the responsibility of each student to ensure that they are able to successfully complete the child protection screening required in their state. All students enrolled must have the appropriate approvals before they may enter a classroom. These are: Blue Card (Qld), Working with Children Check (ACT, NSW and Vic). International students must bring police check documentation from their own countries. Students, who are not cleared for working with children and therefore not able to be placed in a compulsory professional placement, will not be able to complete their course.

In addition, students in Victoria must obtain and present their relevant police check from their home country and from any other country/ies where they have been domiciled for twelve months or more for the last ten years. These police checks must be sighted and authenticated before students will be permitted to undertake a Professional Experience in schools.

Career Paths

- » Secondary School Teacher
- » Work in Australia or overseas
- » The Master of Teaching (Secondary) is a pathway to doctoral studies

Master of Education

LOCATION

Brisbane, Strathfield, Canberra,
Melbourne

DURATION

1 year full-time

COMMENCEMENT

February, July

Admission Requirements

- » the equivalent of an Australian three year Bachelor Degree in Education, or first degree in an area other than Education plus a Graduate Diploma in Education

Course Aims

The Master of Education (Coursework) is designed for graduate students interested in pursuing a broad academic study of education. It provides studies in a range of academic areas, including;

- » Arts education
- » Career development
- » Early childhood
- » Education and training in professional contexts

- » Gifted education
- » Information and communication technology
- » Literacy education
- » Mathematics education
- » Pastoral care leadership
- » Religious education
- » Teaching English as a Second Language (TESOL)
- » Science and technology education
- » Wellbeing in inclusive schooling

Master of Educational Leadership

LOCATION

Brisbane, Strathfield, Canberra*,
Melbourne

DURATION

1 year full-time

COMMENCEMENT

February, July

*Available to international students in limited circumstances who will not be on a student visa.

Admission Requirements

- » the equivalent of an Australian three year Bachelor Degree in Education, or first degree in an area other than Education plus a Graduate Diploma in Education; or
- » four year Bachelor degree in education; and
- » relevant professional work experience

Course Aims

The Master of Educational Leadership course is specifically aimed at creative, energetic and innovative teachers and administrators who want to enhance their professional practice and demonstrate their potential to be professional leaders in their school community or within their organisation.

This course will explore new concepts and approaches to teaching and learning that highlight the partnership of teachers and administrators in building a culture of leadership in schools. This program offers students the opportunity to explore in depth the unique dimensions of leading in Catholic schools, and has the flexibility to cater for those from other denominations and the public sector.

Students with a Student Visa will need to complete the program in minimum duration, study at least one subject on-campus each semester and must not undertake more than 25% of the program online.

Prospective students considering enrolling in this course should initially contact the School of Educational Leadership for full details of the course structure and unit availability by emailing international@acu.edu.au



Religious Education	Brisbane	North Sydney	Strathfield	Canberra	Ballarat	Melbourne	Duration	Commencement
Graduate Certificate in Religious Education	•		•	•		•	½	Feb
Graduate Diploma in Religious Education	•		•	•		•	1	Feb

Graduate Certificate in Religious Education

Graduate Diploma in Religious Education

LOCATION

Brisbane, Strathfield, Canberra, Melbourne

DURATION

Graduate Certificate
1 semester full-time

Graduate Diploma
1 year full-time

COMMENCEMENT

February, July

Admission Requirements

- » the equivalent of an Australian three year Bachelor Degree

Course Aims

The course is designed to provide basic certification requirements which will assist teachers in primary or secondary schools to gain fundamental knowledge, skills and competencies needed for religious education.

Students who complete the graduate certificate can continue into the Graduate Diploma in Religious Education course if they wish to extend their professional qualifications. This course is also intended to provide the necessary specialisation in religious education for entry to the Master of Religious Education course for those students with four years of tertiary study in education which do not include substantial successful study in religious education at the fourth year level.

Course Structure

Graduate Certificate

Students are required to complete a total of 40 credit points consisting of 10cp from each of Strands 1, 2, 3 and 4.

Students who are completing the program in addition to a Graduate Diploma in Education (Secondary) in Brisbane are required to take a different study program.

Graduate Diploma

Students are required to complete a total of 80 credit points, consisting of:

- » Core Units (40cp); and
- » Religious Education Studies (40cp) or Religious Education Studies (20cp); and
- » Theological Studies (20cp)



FACULTY OF HEALTH SCIENCES

- Exercise Science
- Nursing
- Physiotherapy

Exercise Science	Brisbane	North Sydney	Strathfield	Canberra	Ballarat	Melbourne	Duration	Commencement
Bachelor of Exercise and Health Science	•		•			•	3	Feb
Bachelor of Exercise and Sport Science	•		•			•	3	Feb

Bachelor of Exercise and Health Science

LOCATION

Brisbane, Strathfield, Melbourne

DURATION

3 years full-time

COMMENCEMENT

February

Admission Requirements

- » the equivalent of Australian Year 12 certificate

Course Aims

The Bachelor of Exercise and Health Science course aims to produce graduates with a strong academic base in the discipline of exercise and health science, including knowledge and skills in the areas of personal development, health, physical education, outdoor recreation and sport, and with the capacity to apply knowledge and skills in an ethical, fair and respectful manner. The course is designed to enable graduates to pursue a teaching career in Personal Development, Health and Physical Education or employment in Outdoor Recreation or Sport.

Professional Recognition

Depending upon the subjects chosen and the state in which they wish to gain registration (Queensland, New South Wales and Victoria), students will be eligible to teach a combination of personal development, health and physical education as well as a second teaching method in health, outdoor recreation or another discipline such as Mathematics or English. Graduates will be eligible for membership with Australian Council for Health, Physical Education and Recreation (ACHPER).

Course Structure

Students are required to complete a total of 240 credit points, consisting of:

- » Core Units (130cp);
- » Elective Units (100cp);
- » Industry Experience 3 (10cp); and
- » Industry Experience 1 and 2 (total of 120 hours).

Core Units

- » Biomechanics
- » Exercise Physiology
- » Exercise Metabolism
- » Foundation Biological Science 1
- » Foundation Biological Science 2
- » Functional Anatomy
- » Growth, Motor Development and Ageing
- » Health, Fitness and Performance
- » Mechanical Bases of Exercise
- » Motor Control and Learning
- » Nutrition and Exercise
- » Research and Ethics in Exercise Science
- » Psychology of Sport and Physical Activity

Specialisation Units

- » Advanced Coaching Science
- » Alpine Ecology and the Outdoor Experience
- » Aquatics and Athletics
- » Challenges and Opportunities in the Health of Young People
- » Coaching Science
- » Foundations of Health Promotion
- » Foundations of the Outdoor Experience
- » Games and Sport Skills
- » Gymnastics and Dance
- » Health Education and Harm Minimisation Strategies
- » Healthy Relationships for Young People
- » Journeying in the Natural World
- » Leadership Practices and the Outdoor Experience
- » Outdoor Environments and Therapeutic Interventions
- » Outdoor Programming and Mentoring "Youth at Risk"
- » Programs and Practices in Health Promotion
- » Programming Resistance Training
- » River Journeys and Connections to Place
- » Social and Emotional Wellbeing of Young People
- » Sport Studies 1
- » Sport Studies 2
- » The Marine Environment and the Outdoor Experience

Elective Units

- » Advanced Biomechanics
- » Advanced Exercise and Sport Psychology
- » Advanced Exercise Physiology
- » Managing Events for Sport and Exercise
- » Exercise Testing and Prescription
- » Independent Study in Exercise Science
- » The Australian Sport and Exercise Industry
- » Financial Management of Sport and Exercise
- » Marketing and Promoting Sport and Exercise

Career Paths

- » Work as a fitness assessor or trainer
- » Work in health promotion
- » Work as a health and fitness consultant in the public or corporate sector

Further Study

On completion of this degree eligible students may apply for an Honours year. Graduates may progress to higher degree studies in education. Graduates may also progress to further studies in health promotion, sports administration, sports event management, corporate health and wellness, and occupational health.

Bachelor of Exercise and Sports Science

LOCATION

Brisbane, Strathfield, Melbourne

DURATION

3 years full-time

COMMENCEMENT

February

Admission Requirements

- » the equivalent of Australian Year 12 certificate

Course Aims

The Bachelor of Exercise and Sports Science course aims to produce graduates with a strong understanding of the processes and mechanisms underlying exercise assessment and prescription in a diverse range of populations from the chronically ill to elite athletes. Graduates will have the capacity to apply knowledge and skills in an ethical, fair and respectful manner.

Professional Recognition

The course is designed to enable graduates who wish to gain employment in exercise science and sports science to meet the professional requirements for membership with Exercise and Sports Science Australia (ESSA), a first step towards practice in the area of exercise or sports science. Graduates will also be eligible for membership with Australian Council for Health, Physical Education and Recreation (ACHPER).

Course Structure

Students are required to complete a total of 240 credit points, consisting of:

- » Core Units (190cp);
- » Elective Units (40cp);
- » Professional Experience 3 (10cp); and
- » Professional Experience 1 and 2 (total of 120 hours).

Core Units

- » Advanced Motor Control and Learning
- » Biomechanics
- » Exercise, Health and Disease
- » Exercise Metabolism
- » Exercise Physiology
- » Exercise Rehabilitation
- » Exercise Testing and Prescription
- » Foundation Biological Science 1
- » Foundation Biological Science 2
- » Functional Anatomy
- » Growth, Motor Development and Ageing
- » Health and Exercise Psychology
- » Health, Fitness and Performance
- » Mechanical Bases of Exercise
- » Neural Basis of Human Movement
- » Nutrition and Exercise
- » Programming Resistance Training
- » Psychology of Sport and Physical Activity
- » Research and Ethics in Exercise Science

Elective Units

- » Advanced Biomechanics
- » Advanced Coaching Science
- » Advanced Exercise and Sport Psychology
- » Advanced Exercise Physiology
- » Coaching Science
- » Financial Management of Sport and Exercise
- » Foundations of Health Promotion
- » Health Education and Harm Minimisation Strategies
- » Independent Study in Exercise Science
- » Managing Events for Sport and Exercise
- » Marketing and Promoting Sport and Exercise
- » Programs and Practices in Health Promotion
- » The Australian Sport and Exercise Industry

Professional Experience

Professional experience is a requirement in the Bachelor of Exercise and Sports Science. Students will undertake three compulsory professional experience units across each of the three years of the course, one each year.

Career Paths

- » Work as a health and fitness consultant
- » Work as a sports coach
- » Work as an exercise scientist
- » Work as a sports scientist

Further Study

On completion of this degree eligible students may apply for an Honours year. Graduates may progress to postgraduate studies in clinical exercise physiology required for accreditation as an "Exercise Physiologist". Graduates may also progress to research degrees, Masters (Research), and Doctoral degrees.



Nursing	Brisbane	North Sydney	Strathfield	Canberra	Ballarat	Melbourne	Duration	Commencement
Bachelor of Nursing	•	•		•	•	•	3	Feb
Master of Health Science (Health Administration)	•						1	Feb/Jul

Bachelor of Nursing

LOCATION

Brisbane, North Sydney, Canberra, Ballarat, Melbourne

DURATION

3 years full-time

COMMENCEMENT

February

Admission Requirements

- » the equivalent of Australian Year 12 certificate.

Recognition of Prior Relevant Professional Qualifications

Applicants who have completed a three year post-secondary professional nurse education program, and are eligible for registration as a nurse in the country in which they qualified, will be considered for credit of up to 100 credit points. The amount of credit will be assessed on an individual basis. Applicants who have completed other nurse education programs will be assessed on an individual basis.

Course Aims

The Bachelor of Nursing course aims to develop a caring professional nurse, who is proactive and adaptable, a competent safe and ethical clinician, a creative and critical thinker, an informed consumer of practice evidence, and an independent lifelong learner.

The course uses learner-centred approaches including inquiry and situation-based learning to enhance students' experiences during the course as well as their readiness for the workplace. With an increased emphasis on national and State health priorities, graduates will be well prepared to meet current and future health needs of the community.

Students have the opportunity to choose a clinical nursing specialty focus in the final semester that is linked with industry in areas of workforce need, such as medical/surgical nursing, perioperative nursing, high dependency nursing, palliative care, aged care, paediatrics, maternal and infant care, mental health and community nursing.

Professional Recognition

Upon successful completion of the Bachelor of Nursing course graduates are eligible to seek registration as Registered Nurses with the Nursing and Midwifery Board of Australia.

Please note that registration as a nurse in Australia is dependent upon meeting any additional criteria set by the Nursing and Midwifery Board of Australia. Students are advised to refer to the website of the Nursing and Midwifery Board of Australia <http://www.nursingmidwiferyboard.gov.au/> for the current requirements for registration including those related to English-language competence.

Course Structure

Students are required to complete a total of 240 credit points, consisting of:

- » Interprofessional Learning Units (100cp);
- » Nursing Theory Units (60cp);
- » Clinical Nursing Practice Units (60cp);
- » Clinical Nursing Specialty Elective Unit (10cp); and
- » Community Engagement Elective Unit (10cp).

Practice Leadership units must be taken and may only be taken by students undertaking the specialisation in Practice Leadership.

Interprofessional Learning Units

- » Beginning Professional Practice
- » Health Assessment
- » Health Care Ethics
- » Foundation Biological Science 1
- » Foundation Biological Science 2
- » Inquiry in Health Care
- » Mental Health and Illness
- » The Person, Health and Wellbeing
- » Society, Culture and Health
- » Spirituality in Health Care

Nursing Theory Units

- » Acute Care Nursing 1
- » Acute Care Nursing 2
- » Child, Adolescent and Family Nursing
- » Partnerships in Chronicity
- » Promoting Health in Extended Care
- » Transition to Professional Nursing

Practice Leadership

- » Acute Care Nursing 1(Practice Leadership)
- » Child, Adolescent and Family Nursing (Practice Leadership)
- » Partnerships in Chronicity (Practice Leadership)
- » Transition to Professional Nursing (Practice Leadership)

Clinical Nursing Practice Units

- » Clinical Integration: Acute Care
- » Clinical Integration: Complex Care
- » Clinical Integration: Mental Health
- » Clinical Integration: Towards Professional Practice
- » Introduction to Nursing Practice

Practice Leadership

- » Clinical Integration: Acute Care (Practice Leadership)
- » Clinical Integration: Complex Care (Practice Leadership)
- » Clinical Integration: Mental Health (Practice Leadership)
- » Clinical Integration: Towards Professional Practice (Practice Leadership)

Clinical Nursing Specialty Electives

- » Aged Care Nursing Practice
- » Community Nursing Practice
- » High Dependency Nursing Practice
- » Maternity Nursing Practice
- » Medical Surgical Nursing Practice
- » Mental Health Nursing Practice
- » Paediatric and Child Health Nursing Practice
- » Oncology and Palliative Care Nursing Practice
- » Peri-operative Nursing Practice
- » Rehabilitation Nursing Practice

Community Engagement Electives

- » Community Engagement
- » Community Engagement in a Developing Country
- » Engaging with People with Dementia

Additional Information

Clinical Nursing Practice

The timetabling of clinical practice experience during the semester will depend upon the availability of placements, local needs and different models of clinical practice. This may lead to clinical placements in a regional location and/or during semester break.

Immunisation

As nursing brings students into contact with various communicable diseases it is a requirement of some facilities used for clinical experience that students have appropriate immunisation.

Cardio Pulmonary Resuscitation (CPR) Certificate

Students are required to have a current CPR certificate from an accredited source prior to undertaking clinical practice. The currency of the certificate will need to be validated each year.

Queensland Commission for Children and Young People

In Queensland, all students who work with children and young people as part of their studies will need to apply for a Blue Card, prior to their clinical experience. Failure to obtain a Blue Card may prevent students from attending their clinical practice placement.

Prohibited Employment Check

In New South Wales, all students who undertake clinical nursing practice will need to successfully complete a Prohibited Employment declaration, prior to their clinical experience. Failure to complete a Prohibited Employment declaration may prevent students from attending their clinical practice placement.

Uniform

Students will be required to wear the approved University nursing student's uniform during the clinical components of the course. Details concerning the uniform and place of purchase will be provided after enrolment.

Career Paths

- » Aged carer
- » Community carer
- » Medical/surgical nurse
- » Mental health carer
- » Paediatric nurse
- » Registered nurse
- » Developmental disability carer
- » Maternal and infant carer

Further Study

On completion of this degree eligible students may apply for an Honours year. Graduates may progress to research degrees, Masters (Research), and Doctoral degrees. Graduates may also progress to the Master of Health Science (Health Administration).

Master of Health Science (Health Administration)

LOCATION

Brisbane

DURATION

1 year full-time

COMMENCEMENT

February, July

Admission Requirements

- » the equivalent of an Australian three year Bachelor Degree in health discipline; and
- » eligibility for nurse registration in the country of initial qualification

Course Aims

The Master of Health Science (Health Administration) provides the opportunity to enhance the practice of health professionals by expanding their knowledge and skills in Health Administration.

Course Structure

Students are required to complete 80 credit points comprised of:

- » Major Units (40cp); and
- » Core Units (40cp).

Major Units

- » Governance in Health Care
- » Organisational Contexts and Management
- » Quality in Health Care
- » Resource Management

Core Units

- » Ethics in Contemporary Practice
- » Interpreting and Applying Evidence
- » Policy and Planning in Health Care
- » Elective/Project

Further Study

Graduates may be eligible to apply for enrolment in the Master of Nursing (Research) or the Master of Philosophy. These courses enable students to study an area of interest in greater depth through research and also provide research training for future research activities.



Physiotherapy	Brisbane	North Sydney	Strathfield	Canberra	Ballarat	Melbourne	Duration	Commencement
Bachelor of Physiotherapy	•	•					4	Feb

Bachelor of Physiotherapy

LOCATION

Brisbane, North Sydney

DURATION

4 years full-time

COMMENCEMENT

February

Admission Requirements

- » the equivalent of Australian Year 12 certificate

A full application, including all educational documents, must be received by the closing date in order to be considered. For details of the documentation required please refer to the course browser: <http://www.acu.edu.au/courses/undergraduate/physiotherapy/>

Entry is on a competitive basis.

Course Aims

The aim of this course is to provide an educational experience that ensures graduates are competent and effective practitioners eligible for entry into the profession of physiotherapy. This course will be delivered to students from a range of educational backgrounds to promote diversification and meet the requirements of contemporary physiotherapy practice.

Graduates will be :

- » highly competent;
- » ethical in approach;
- » critical thinkers;
- » effective communicators; and
- » committed to achieving improved health outcomes for their clients.

Additionally, it is the aim of this course that graduates will be eligible for registration as a physiotherapist with the Australian Health Practitioner Regulation Agency (AHPRA).

Course Structure

Students are required to complete a total of 320 credit points, consisting of:

- » Foundation Units (70cp);
- » Interprofessional Units (30cp); and
- » Physiotherapy Practice Units (220cp).

Foundation Units

- » Clinical Exercise Physiology for Physiotherapists
- » Foundation Biological Science 1
- » Foundation Biological Science 2
- » Physiotherapy Anatomy 1
- » Physiotherapy Anatomy 2
- » Physiotherapy Pathophysiology 1
- » Physiotherapy Pathophysiology 2
- » Interprofessional Units

Interprofessional Units

- » The Person, Health and Wellbeing
- » Society, Culture and Health
- » Health Care Ethics

Physiotherapy Practice Units

- » Foundations of Physiotherapy Practice 1
- » Foundations of Physiotherapy Practice 2
- » Movement Science and Practice 1
- » Movement Science and Practice 2
- » Cardiorespiratory Science and Practice 1
- » Musculoskeletal Science and Practice 1
- » Musculoskeletal Science and Practice 2
- » Cardiorespiratory Science and Practice 2
- » Musculoskeletal Science and Practice 3
- » Neurological Science and Practice 1
- » Neurological Science and Practice 2
- » Paediatric Physiotherapy Practice
- » Physiotherapy Practice 1
- » Physiotherapy Practice 2
- » Physiotherapy Practice 3
- » Physiotherapy Practice 4
- » Physiotherapy Clinic 1
- » Physiotherapy Clinic 2
- » Physiotherapy Clinic 3
- » Physiotherapy Clinic 4
- » Physiotherapy Clinic 5
- » Physiotherapy Clinic 6

Industry experience

To become a registered physiotherapist, insight and essential skills are gained through mandatory industry experience. Students will therefore complete a number of clinical placements. These units will enable students to develop an integrated problem-solving approach to assessing and understanding individuals' problems. Students will also gain the ability to apply assessment and treatment skills and specific techniques in the clinical setting.

Students will practice on themselves and other students as simulated patients all the examination and treatment procedures used by physiotherapists.

Career Paths

Physiotherapy can offer excellent employment opportunities in a variety of settings including:

- » specialist areas e.g. sports physiotherapy, rehabilitation, cardiorespiratory physiotherapy, paediatrics, and women's health;
- » hospitals and rehabilitation units;
- » community health centres;
- » private practices offering a full range of treatments; and
- » research, advisors, consultants in educational, government and industrial institutions.



FACULTY OF THEOLOGY AND PHILOSOPHY

Theology	Brisbane	North Sydney	Strathfield	Canberra	Ballarat	Melbourne	Duration	Commencement
Bachelor of Theology	•		•	•		•	3	Feb/Jul
Bachelor of Theology/Bachelor of Social Work	•		•	•			4	Feb

Bachelor of Theology

LOCATION

Brisbane, Strathfield, Canberra, Melbourne

DURATION

3 years full-time

COMMENCEMENT

February, July

Admission Requirements

- » the equivalent of Australian Year 12 certificate

Course Aims

This course offers students the opportunity to pursue either an in-depth study in scripture, theology and philosophy or a broader based program in theology studies, within the Catholic tradition. Within this Catholic perspective, students will reflect critically on the meaning of Christian faith in an ecumenical and interfaith context.

In theology at Australian Catholic University you will have the opportunity to learn about religion and how it influences the modern world, to read and appreciate scriptural and historical texts, consider the intellectual and academic basis of core faith teachings and engage in debate about contemporary ethical dilemmas.

Course Structure

Students are required to complete a total of 240 credit points, consisting of:

- » 160cp from Theology / Philosophy and a further eight units of Theology / Philosophy, Study of Religions, Liberal Arts or other approved areas of study;
- » one Major of 60cp from Biblical Studies, Christian Thought or Christian Practice;
- » two Minors of 40cp each: at least one minor in a theological discipline or in philosophy; the second minor may be in the Liberal Arts or other disciplines. Students are required to complete at least a minor in both Christian Thought and Biblical Studies.

A Major or a minor plus four electives in the Liberal Arts may be part of the course.

Career Paths

- » Chaplaincy work
- » Community organisations
- » Justice and peace centres
- » Parish associate
- » Pastoral care
- » Teaching

Bachelor of Theology/ Bachelor of Social Work

LOCATION

Brisbane, Strathfield, Canberra

DURATION

4 years full-time

COMMENCEMENT

February

Admission Requirements

- » the equivalent of Australian Year 12 certificate

Course Aims

This unique dual degree will provide you with an education in social work that is informed by the range of values specific to the Christian tradition, and an education in theology that is orientated to the professional values and practice of the social work profession. You will engage in critical reflection on the theological tradition of the Church and its relationship to social work theory and practice.

Course Structure

Students are required to complete a total of 320 credit points, consisting of:

- » 100cp Core Units from Christian Practice (60cp) and Christian Thought (40cp);
- » 40cp from Biblical Studies minor including Core Unit;
- » 10cp from Theology Core Unit;
- » 10cp from Philosophy Units;
- » 120cp from Social Work Units; and
- » 40cp from Social Work Field Placement Units.

Career Paths

- » Chaplaincy work
- » Parish associate
- » Pastoral care
- » Pathway to teaching
- » Social action
- » Social administration

More information

www.acu.edu.au/courses



Research may be defined as creative work that is undertaken on a systematic basis in order to increase our theoretical and/or practical knowledge and to apply knowledge in new ways.

The aim of a research degree is to provide a thorough training in a particular discipline area through a process of original investigation in order to increase knowledge. It represents a wonderful opportunity for you to focus on an area of particular interest to you and to make an important contribution to the development of new knowledge in society. It also enables you to work with one or more academics with specialist expertise in that area of study.

Master of Education (Research)

LOCATION

Brisbane, Strathfield, Canberra, Ballarat, Melbourne

DURATION

2 years full-time

COMMENCEMENT

January, March, June, September

Admission Requirements

Applications are encouraged from persons who have a first degree or postgraduate diploma in the relevant area and appropriate professional experience. It is likely that the backgrounds of candidates will vary considerably. Applications will only be approved if a staff member is available for supervision duties and is willing to undertake supervision in the proposed area of study.

Course Aims

This research degree allows students to undertake independent, supervised research on a topic of their choice within the broad field of education. The degree is awarded on the basis of a written thesis. Two compulsory units - methodology and literature review must also be completed. The Master of Education (Research) program also provides opportunities for suitably qualified candidates to progress to a doctoral program.

Students with a Student Visa will need to complete the program in minimum duration, study at least one subject on-campus each semester and must not undertake more than 25% of the program online.

Doctor of Education

LOCATION

Brisbane, Strathfield, Melbourne

DURATION

3 years full-time

COMMENCEMENT

February

Admission Requirements

A Master's degree in Education or equivalent, with an average of Credit or equivalent.

At least five years' relevant work experience

Two confidential referee reports attesting as to the applicants suitability as a candidate for the degree and their capacity to complete the thesis (at least one must be an academic reference; one may relate to the applicant's professional experience).

Course Aims

The Doctor of Education is a three-year full-time research degree which requires the student to carry out significant original, independent and supervised high-level research in the field of Education. It is assessed on the basis of a written thesis. The University is committed to research concerned with quality, equity and diversity in education with emphases on learning, leadership, numeracy, literacy, Indigenous education and religious education.

Students with a Student Visa will need to complete the program in minimum duration, study at least one subject on-campus each semester and must not undertake more than 25% of the program online.

Master of Nursing (Research)

LOCATION

Brisbane, North Sydney, Canberra, Ballarat, Melbourne

DURATION

2 years full-time

COMMENCEMENT

February

Admission Requirements

A Bachelor of Nursing degree (or equivalent) with Honours or a Postgraduate Diploma, in keeping with the Australian Qualifications Framework (AQF) for professional master's degrees.

Applicants who do not meet the general entry requirements, but who have other qualifications and/or professional experience which would provide a sound basis for admission, may be considered for special entry to the course.

Master of Midwifery (Research)

LOCATION

Brisbane, Melbourne, Ballarat

DURATION

2 years full-time

COMMENCEMENT

February

Admission Requirements

To qualify for entry to the course, applicants must have a Bachelor of Nursing or Midwifery degree (or equivalent) with Honours or a Postgraduate Diploma, in keeping with the Australian Qualifications Framework (AQF) for professional Masters degrees.

Applicants who do not meet the general entry requirements, but who have other qualifications and/or professional experience which would provide a sound basis for admission, may be considered for special entry to the course.

Master of Exercise Science (Research)

LOCATION

Strathfield, Melbourne

DURATION

2 years full-time

COMMENCEMENT

February

Admission Requirements

A four year Bachelor Degree in exercise science or a related area [for example BEXSc(Hons), BExHSc(Hons) or BExSSc(Hons)].

The University awards the degrees of Master of Philosophy (MPhil) (by thesis) and Doctor of Philosophy (PhD) after full-time study. Candidates are admitted to undertake a research degree in a field of study which has been broadly identified in the University's Research Management Strategy as an area of strength:

- » Educational Leadership
- » Ethics and Philosophy
- » Health Sciences
- » Mathematics Education
- » Religious Education and Religion Studies
- » Social Sciences
- » Teaching and Learning, including Lifelong Learning
- » Early Christian Studies and Theology

Candidates may also be accepted in fields in which there exists a demonstrated capacity for research supervision. Research degree students are accepted and enrolled in a faculty and may also be associated with a research centre or institute.

Master of Philosophy

LOCATION

Brisbane, North Sydney, Strathfield, Canberra, Ballarat, Melbourne

DURATION

2 years full-time

COMMENCEMENT

January, April, July, October

Admission Requirements

Applicants must meet one of the following:

- » A Bachelor's Degree with at least second class honours, Division B, or
- » A Bachelor's Degree with 2nd Class Honours in which there is no division and the Research Committee is satisfied that the standard attained is equivalent to a H2B from ACU, or
- » A graduate of this or another tertiary education institution who has after one year's study at ACU reached in the examination period a standard equal to at least H2B, or
- » A graduate of at least two years standing whose research publications or written reports on work carried out satisfy the Academic Board that the applicant has the ability and experience to pursue the proposed course of study.

More information

www.acu.edu.au/courses

Doctor of Philosophy

LOCATION

Brisbane, North Sydney, Strathfield, Canberra, Ballarat, Melbourne

DURATION

4 years full-time

COMMENCEMENT

January, April, July, October

Admission Requirements

Applicants must meet one of the following:

- » A Bachelor's Degree with at least second class honours, Division B, or
- » A Bachelor's Degree with 2nd Class Honours in which there is no division and the Research Committee is satisfied that the standard attained is equivalent to a H2B from ACU, or
- » A graduate of this or another tertiary education institution who has after one year's study at ACU reached in the examination period a standard equal to at least H2B, or
- » A graduate of at least two years standing whose research publications or written reports on work carried out satisfy the Academic Board that the applicant has the ability and experience to pursue the proposed course of study.

More information

www.acu.edu.au/courses



Academic Information

Academic Progress

A student's enrolment in a course may be deferred, suspended or cancelled in accordance with University regulations.

These regulations are detailed in the yearly handbook, accessible via:
<http://www.acu.edu.au/142401>

Assessment Methods

Assessment at Australian Catholic University may include a range of methods such as formal end of semester examinations, continuous assessment throughout the semester, written assignments, essays, and field trips/projects. Students will be advised at the commencement of their studies as to what methods will be used.

Professional Recognition

Students should check with the professional bodies in their own country in regard to the recognition of courses which they undertake outside their country, to ensure that they meet local professional standards and guidelines.

Credit Transfer

ACU may grant credit or advanced standing for a student's previous tertiary studies and/or recognised prior learning. The maximum amount of credit which can be awarded is normally:

- » Up to two thirds of an undergraduate qualification, depending on the program for which entry is sought; or
- » Up to half of a postgraduate qualification, depending on the program for which entry is sought.

Credit is normally assessed at the time of enrolment, not at the time of application.

Credit will not be granted for any academic study completed more than seven years before admission to candidature.

Applying for Credit

International students seeking to apply for credit or advanced standing should bring with them as much information as possible about the courses already studied, including certified academic transcripts in English with full subject descriptions.

Upon commencement of studies at the University, students will need to liaise with their Course Coordinator to formalise recognition for prior learning or any credit advised at the application stage.

Semester Timetable

Semester One

Commences 1st week in February

Finishes 3rd week in June

Semester Two

Commences 2nd week in July

Finishes 2nd week in November

This information is a guide only. Students who do not arrive in time for the commencement of semester will miss essential orientation information.

Unit Offerings

Elective unit offerings will vary subject to student demand and lecturer availability. Additionally, elective units will vary between campuses and from year to year.

Refund Policy

English Language Programs

To access the Refund Policy for English Language Programs, please refer to our website:
<http://www.acu.edu.au/international/59754>

Diploma and Degree Programs

Total refunds

A total refund (inclusive of the Diploma enrolment fee) will be made in the following circumstances:

If an offer of a place is withdrawn by the University all tuition fees are fully refundable. However, if the offer was made on the basis of incorrect or incomplete information being supplied by the applicant/student the University reserves the right to retain 10% of one full semester fees plus the Diploma enrolment fee.

ACU is unable to provide or ceases to provide the course for which the student has applied or is enrolled.

A student who fails to meet degree/ diploma progression rules and who is thus not permitted to re-enrol will be eligible for a refund of those fees paid in advance of notification of exclusion.

Partial refunds

If a student, after accepting an offer of a place, informs the University of an intention to withdraw, the University will provide a refund but will retain a percentage of the semester fee to cover administrative costs. This fee is determined by the amount of notice given, as follows:

- » Four weeks or more notice before the commencement of the course will invoke an administrative fee of 10% of one full semester fees.
- » Less than four weeks notice before course commencement will invoke

International Application Form

Previous Enrolment

Have you previously applied to study, or enrolled at ACU, or one of its predecessor colleges?

No Yes Family name or past record: _____ Student ID (if known): _____

Personal Details (As they appear on your passport)

Family Name			
Given Name			
Title (Mr,Mrs,Other)			
Previous Name (If changed)			
If your academic records are submitted in another name, please provide certified evidence of change of name:			
Date of Birth			
Gender	<input type="checkbox"/> Male	<input type="checkbox"/> Female	
Country of Citizenship		Passport Number	
Country of Birth			
Year arrived in Australia (If applicable)			

Do you speak a language other than English at your permanent home address?

No Yes → Please specify: _____

Do you have a disability for which additional assistance may be required?

No Yes → Please attach a separate sheet outlining this disability and assistance required:

Contact Details (All applicants must complete this section in full)

Permanent Home Address			
			Country
Mailing Address			
			Country
I am currently residing	<input type="checkbox"/> in Australia		<input type="checkbox"/> Overseas
Email			
Telephone Numbers (include international area code)	Home		
	Work		
	Mobile		

Agent Details

Company Name			
Branch / Office			
Contact Person			
Email Address			
Postal Address			Country
Telephone Number		Fax Number	

Visa

Will you be studying on a Student Visa?

- Yes → Students on a Student Visa are not eligible to study part-time
- No → Please specify what type of Visa you will use:

English Language Program

ACU English Language Programs are 20 hours a week. Please indicate your study preference below.

Course Name	Campus	Starting Date	Length of Course
1.			
2.			
3.			

Diploma Pathway Program

Please indicate your study preference below.

Course Name	Campus	FT / PT	Entry Date
1.			
2.			
3.			

Undergraduate / Postgraduate Degree Program

Please indicate your study preference below.

Course Name	Campus	FT / PT	Entry Date
1.			
2.			
3.			

Curriculum Studies Areas

(for Bachelor of Teaching / Bachelor of Arts, Graduate Diploma in Education (Secondary) and Master of Teaching (Secondary) ONLY)

Please indicate the proposed curriculum study areas (teaching methods) for which you are qualified. A minimum of two curriculum areas are required.

1.	2.	3.
----	----	----

English Proficiency

Students who have undertaken their higher education in English in UK, Ireland, USA, Canada, Australia or New Zealand do not need to complete this section or provide evidence of English proficiency.

How long have you been studying English?	<input type="checkbox"/> < 1 Year	<input type="checkbox"/> 1-3 years	<input type="checkbox"/> +6 years
What is your present level of English?	<input type="checkbox"/> Elementary	<input type="checkbox"/> Intermediate	<input type="checkbox"/> Advanced
Have you taken any English proficiency examinations?	<input type="checkbox"/> No	<input type="checkbox"/> Yes → Please attach your results	
Do you need/ intend to take an English proficiency examination in Australia?	<input type="checkbox"/> No	<input type="checkbox"/> Yes → Please indicate which examination <input type="checkbox"/> IELTS <input type="checkbox"/> TOEFL <input type="checkbox"/> ACU English Test	

Have you ever been excluded from a course and / or institution?

- No Yes → Please provide details including effective dates

Education History

Please record all studies undertaken including high school, preparation / bridging courses, university or college studies as well as studies undertaken at Australian Catholic University.

Course	Institution	Date Commenced	Date Completed

Employment History

Type of Work	Employer	Date Commenced	Date Completed

Please submit a copy of your curriculum vitae:

Please submit work certificates or statements of employment for all work experience listed, along with a certified translation where these documents are not in English.

Research Programs

Course Name		Campus	
Starting Date		Expected Duration	
Faculty		School	
Discipline Area			

Please submit a summary of your research intentions (approximately 300 - 500 words):

Have you discussed your research intentions with an academic staff member at Australian Catholic University?

No Yes → Please state the name of the staff member you have been communicating with:

If you are currently employed, is there any requirement for support from your current employer associated with this application or are you under a bond in any way?

No Yes → Please attach a statement of commitment of you being able to complete studies without interruption by the employer.

Have you ever completed research at any stage in your career?

No Yes → Please attach details of thesis, major government or employer report, along with a certified translation if not in English:

Have you ever been an author or co-author of any publications, resulting from research?

No Yes → Please attach copies of any significant publications, along with a certified translation if not in English:

Have you ever received recognition for academic achievement (eg, medals, prizes etc)?

No Yes → Please attach details of the awards, along with a certified translation if not in English:

Academic Referees

Please indicate two academic referees for the University to contact regarding your application:

Name		Email	
Name		Email	

Research Scholarship

Are you currently receiving, or have you ever received a postgraduate scholarship?

No Yes → Please attach details of this scholarship, along with a certified translation if not in English:

Applicants with 1st Class Honours or equivalent may be eligible for an International Postgraduate Research Scholarship (IPRS). Would you like to apply for an International Postgraduate Research Scholarship?

No Yes

Have you applied for any other scholarship this year?

No Yes → Please provide details of the institution and program you applied for:

How did you first hear about ACU?

<input type="checkbox"/> Agents	<input type="checkbox"/> Exhibition / Fair
<input type="checkbox"/> Friend or relative	<input type="checkbox"/> My school / college / university
<input type="checkbox"/> Internet	<input type="checkbox"/> Other - please specify:

Please choose two (one for each parent) from the following list as your parent's highest educational qualifications.

(e.g. "D" = Male completed Year 12 schooling or equivalent) from the options below : (this information is required for Commonwealth Government reporting – please see <http://www.deewr.gov.au>)

A	Male Postgraduate qualification (e.g. Postgraduate Diploma, Masters, PhD)
B	Male Bachelor Degree
C	Male other post school qualification (e.g. VET/TAFE Certificate Associate Degree or Diploma)
D	Male completed Year 12 schooling or equivalent
E	Male did not complete Year 12 schooling or equivalent
F	Male completed Year 10 schooling or equivalent
G	Male did not complete Year 10 schooling or equivalent
H	Male Unknown
I	Female Postgraduate qualification (e.g. Postgraduate Diploma, Masters, PhD)
J	Female Bachelor Degree
K	Female other post school qualification (e.g. VET/TAFE Certificate Associate Degree or Diploma)
L	Female completed Year 12 schooling or equivalent
M	Female did not complete Year 12 schooling or equivalent
N	Female completed Year 10 schooling or equivalent
O	Female did not complete Year 12 schooling or equivalent
P	Female Unknown
Parent one:	
Parent two:	

Declaration

ACU is committed to ensuring the privacy of all information it collects. Personal information supplied to the University will only be used for the administrative and educational purposes of the institution. Personal information collected by the University will only be disclosed to third parties with the written consent of the person concerned, unless otherwise stated by law. For further information please see the University's Statement on Privacy located at <http://www.acu.edu.au/145293>, and the Student Administration Privacy Policy located at <http://inet.acu.edu.au/studentadmin/legal/privacy>.

I understand that:

- ACU may be required to disclose this information to the Department of Immigration and Citizenship (DIAC)
- ACU will disclose this information to the Department of Education, Employment and Workplace Relations (DEEWR);
- DEEWR will store the information securely in the Higher Education Information Management System;
- DEEWR may disclose the information to the Australian Taxation Office (ATO); and
- ACU will not otherwise disclose the information without my consent unless required or authorised by law.

I declare that I have visited the University's website and/or read the International Student Guide or Exchange Guide and agree to obey the rules and regulations of the Australian Catholic University. I declare that the information supplied herein is correct and complete. I acknowledge that the submission of incorrect or incomplete information may result in a cancellation of enrolment at any stage. I recognise that it is my responsibility to provide all necessary certified documentary evidence of my qualifications. I authorise the University to obtain further information with respect to my application and, if necessary, provide information to educational institutions and admission centres.

Application Deadline

You may apply to the University any time prior to your course commencement date, except for the following courses which have an application deadline of 31 October:

- Bachelor of Physiotherapy
- Bachelor of Psychological Science (Honours)
- Postgraduate Diploma in Psychology
- Master of Psychology (Clinical)
- Master of Psychology (Educational & Developmental)

The University reserves the right to close applications for any course once enrolment quotas have been reached.

CRICOS 00004G 00112C 00873F 00885B

Applicant's Signature	Date
-----------------------	------

Please mail this form and relevant certified/attested documentation to

International Admissions, Australian Catholic University, PO Box 968, North Sydney, NSW 2059, Australia

Phone: (61 2) 9739 2437 Fax (61 2) 9739 2001 Email: international.admissions@acu.edu.au

Alternatively you may submit an application via our secure online system <http://www.acu.edu.au/international>



No refunds

A student who withdraws from a course, for whatever reason, after the fourth teaching week of the course will not be eligible for a refund. Students who are granted permanent resident status during the course are required to pay the fees for the remainder of the semester in which they are currently enrolled.

Refund process

Any student who wishes to obtain a refund on the above or any other grounds should make application in writing to the Manager, International Education for a decision by the Executive Director International. If the student is not satisfied with a decision of the Director, appeals should be made in writing to the Deputy Vice-Chancellor (Administration and Resources).

Refunds will be made in Australian dollars and the University reserves the right to make refunds payable in the country of origin. Agency fees, if applicable, will not be refunded. In the case of an approved transfer to another educational institution any balance of fees will be sent to that institution upon request.

This agreement does not remove the student's right to take further action under Australia's consumer protection laws.

The University's dispute resolution processes do not circumscribe the student's right to pursue other legal remedies.

Release Policy

Approvals for release to enrol at another education provider are not automatic. Students must formally apply for approval from the Executive Director International or delegate. A copy of the new provider's offer letter must be included with the request.

Students do not require a release letter under the ESOS Act 2000 once they have completed six calendar months of their principal course (ie Bachelor Degree rather than pathway program).

Refusals

The University will not grant release letters in the following circumstances:

- » For students commencing their principal course who wish to transfer from a higher level course to a lower level course (ie Degree to diploma);
- » If the request is considered detrimental to the student's well-being; or
- » If the student is indebted to the University.
- » Students who are refused have the right to appeal in accordance with the University's complaints and grievance process.

Approvals

Release letters will normally be issued on the basis of the following criteria:

- » The University not being able to provide a course;
- » The student not being able to proceed in their course due to prerequisite and or academic progression problems;
- » Completion of one full academic session; or
- » Written advice supporting a change from a government sponsor.

Students under 18 years of age

In addition to a copy of the new institutions offer letter the following must also be obtained for a student under 18 years of age:

- » Written confirmation that the student's parent or legal guardian supports the transfer; and
- » Where the student is not being cared for in Australia by a parent or suitable nominated (blood) relative, the valid enrolment offer also confirms that the registered provider will accept that responsibility for approving the student's accommodation, support and general welfare arrangements as per standard 5 of the National Code 2007.

Timeframe

Students will be advised of an outcome within fourteen days of the formal request for release.

CONTACT

AUSTRALIAN CATHOLIC UNIVERSITY

Prospective Student Offices

Melbourne

Australian Catholic University
115 Victoria Parade
Fitzroy VIC 3065
Tel: +61 3 9953 3302
Fax: +61 3 9953 3145
Email: international@acu.edu.au

North Sydney

Australian Catholic University
42 Edward Street
North Sydney NSW 2060
Tel: +61 2 9739 2441
Fax: +61 2 9739 2001
Email: international@acu.edu.au

Brisbane

Australian Catholic University
1100 Nudgee Road
Banyo QLD 4014
Tel: +61 7 3623 7340
Fax: +61 7 3623 7161
Email: international@acu.edu.au

Admissions Office

North Sydney

42 Edward Street
North Sydney NSW 2060
Fitzroy VIC 3065
Tel: +61 2 9739 2437
Fax: +61 2 9739 2001
Email: international@acu.edu.au

Representative Agents

The University also has a network of authorised agents around the world who you can contact for assistance with your application or visa.

For more information:

www.acu.edu.au/international



facebook.com/ACUinternational



<http://bit.ly/ACUorkut>



twitter.com/studyACU



youtube.com/user/ACUinternational