

UNIVERSITY OF  
SASKATCHEWAN

Saskatoon | Saskatchewan | Canada 

explore.[usask.ca/international](http://usask.ca/international)  
2012-2013



## PRESIDENT'S MESSAGE

“ Choosing a university abroad is an important decision. At the University of Saskatchewan, you will benefit from quality education, internationally-recognized programs, world-renowned faculty and dedicated support for international students. If you want your university to be committed to your personal, educational and professional success, consider the University of Saskatchewan.”

Peter MacKinnon, President  
University of Saskatchewan

## The University of Saskatchewan

As a top-tier research-intensive university in Canada and the largest in the province of Saskatchewan, our school is the only English-speaking university in Canada with such a broad combination of human, animal and plant studies on one campus. Here, students from over 100 countries work together with professors and researchers as they contribute to our world in over 100 disciplines.



16,590	1,562	2,835	16:1	7,000 <small>(approximately)</small>	36.2	17.8
UNDERGRADUATE STUDENTS	INTERNATIONAL STUDENTS	GRADUATE STUDENTS	STUDENT TO FACULTY RATIO	FACULTY AND STAFF	AVERAGE FIRST- AND SECOND- YEAR CLASS SIZE	AVERAGE THIRD- AND FOURTH- YEAR CLASS SIZE

## The Saskatchewan Advantage

We recognize the value of welcoming and supporting international students. Here in Saskatchewan, international students will find more pathways to success than anywhere else in the world.



- **SASKATCHEWAN GOVERNMENT HEALTH INSURANCE** is available to you at no cost when you arrive, provided you have a valid study permit.
- **PART-TIME WORK ON CAMPUS** is available to you at our library, giving campus tours, refereeing sports and much more.
- **OFF-CAMPUS WORK PERMITS** are available after six months of full-time study. With a permit, you can work off campus part time during the school year and full time during the summer.
- **WORK EXPERIENCE** can be included in degree programs or added options to your education, depending on your program of interest: experiential learning, paid co-operative work, internship, etc.
- **SASKATCHEWAN'S GRADUATE RETENTION PROGRAM** gives you an income tax rebate of up to \$20000 of tuition, if you stay and work in Saskatchewan after you graduate from our university.
- **OUR POST-GRADUATE WORK PERMIT PROGRAM** provides eligible graduating students with an opportunity to work in Canada for up to three years.
- **OUR SASKATCHEWAN GOVERNMENT'S IMMIGRATION NOMINEE PROGRAM** allows you to apply for permanent residency after one year of work experience after graduation.
- **CANADIAN EXPERIENCE CLASS** could provide you with an opportunity to immigrate to Canada permanently after graduation.

The economy and job opportunities in Saskatchewan are booming. Learn more about many of these programs and the province of Saskatchewan at [gov.sk.ca](http://gov.sk.ca).



“ I work at Huskie Athletics events, so I keep statistics and set up for games. I also work at the Crêpe Bistro (on campus)—and eat for free! I thought about getting an off-campus work permit, but they pay very well on campus, and it is so close.”

Fathima Muthalib  
Sri Lanka  
Languages and Linguistics



# Saskatoon, Saskatchewan, Canada

We are located on the Canadian prairies between Vancouver and Toronto. Our beautiful city is known for its modern amenities, welcoming people and scientific excellence.

- Saskatchewan's largest city
- Population: 231,900
- Lively city-life, friendly hospitality and diverse cultural experiences
- Clean and safe community with a high quality of life and affordable cost of living
- Linked to the world by Saskatoon's John G. Diefenbaker International Airport
- Home to one of the most successful university-related research parks in North America

## OUR CAMPUS IN THE CITY

The University of Saskatchewan is on the banks of the South Saskatchewan River and is directly connected to our vibrant downtown with the arching bridges and riverbank pathways that earn our city its reputation as the "Paris of the Prairies."

## OUR WEATHER

- Saskatoon is one of the sunniest cities in Canada.
- We experience four distinct seasons.
- Average summer temperature: 24°C or 75°F
- Average winter temperature: -17°C or 1°F



## NOT TOO COLD

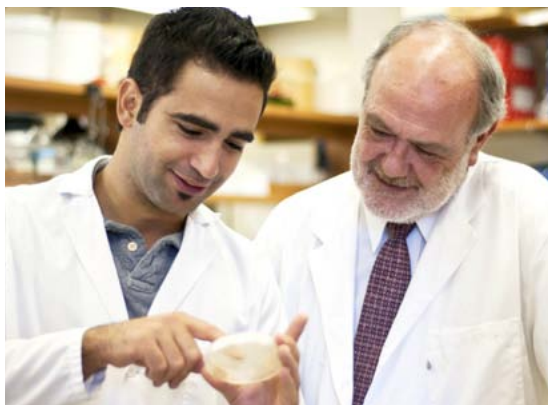
We experience less annual snowfall than many major Canadian cities.



■ Saskatoon	97.2 cm
■ Winnipeg	110.6 cm
■ Toronto	115.4 cm
■ Edmonton	123.5 cm
■ Calgary	126.7 cm
■ Halifax	151.8 cm
■ Montreal	226.2 cm

Sources: Environment Canada and The Weather Network





### STUDENT-INVENTED VACCINE

As a graduate student in microbiology, David Asper invented a cattle vaccine to make food and water around the world safer for human consumption. His work premised on the idea that humans can be protected from harmful bacteria by vaccinating the cattle that are the source.

## SCIENTIFIC

We are the only university in English Canada that offers the complete range of human, animal and plant science programs on one campus. In addition, Saskatoon is known as “Canada’s Science City” largely because of the incomparable mix of scientific infrastructure on our campus:

- Canada’s only facility for synchrotron light research—the Canadian Light Source Inc.
- Innovation Place—one of North America’s most successful research parks
- Nearly 300 crop varieties released from our Crop Development Centre
- World-renowned Vaccine and Infectious Disease Organization with new partner institute, the International Vaccine Centre



### CREATIVE FACILITIES

We’ve proposed construction of the Clarion Project, a national destination for collaborative creativity and artistry, including performance venues, classrooms and a digital research centre.

## ARTISTIC

Whether courses or extra-curricular activities, our fine arts programming is abundant: singing, instrumental, drama, art, photography, writing and more.



### CELEBRATING DIVERSITY

We host International Week each year to encourage learning about many diverse countries, customs and cultures. This is a great opportunity to meet new people in our friendly campus community.

## FRIENDLY

As soon as you arrive on campus, you will feel welcomed by our community of energetic students, approachable professors and helpful staff. Our people support international students like you, and we will gladly help you feel at home.



“It is very easy to start a conversation with people here. You can talk about the weather or how your day is going. When you smile at someone here, they will smile back right away!”

Sara Tang  
Malaysia  
Biochemistry and Biotechnology



### OLYMPIAN

Kelsie Hendry (Bachelor of Education) competed for Canada in the 2008 Olympics in China, earned a bronze medal at the 2010 Commonwealth Games in India, and is competing again in the 2012 Olympics in England.

### EXCITING

Our school spirit is proud, loud and fun. Our U of S Huskie athletes have won numerous national championships and our campus community enjoys cheering them on. Go Huskies Go!



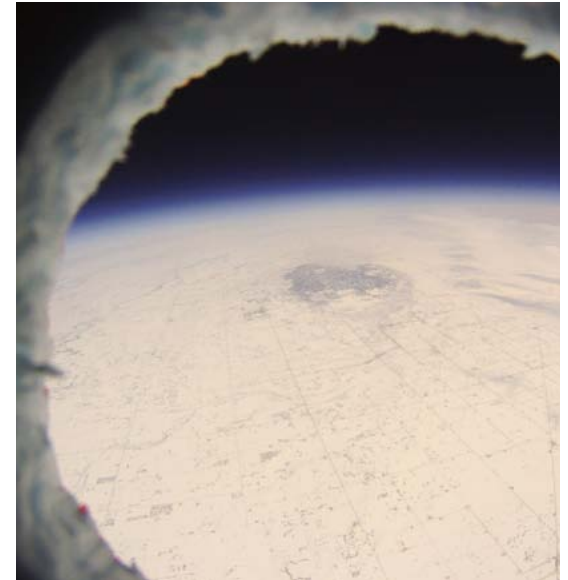
### BEAUTIFUL

Enjoy our park-like campus in the summer months and take advantage of our tunnels and sky-walks in the winter, since almost all of the main buildings are connected. Our greystone buildings and quality facilities make our campus an ideal place to study.

- One of the most beautiful campuses in Canada
- One of the oldest universities in Western Canada

### SAFE

Safety is a priority on campus. We have a very safe campus and our Department of Campus Safety is dedicated to keeping campus a safe and welcoming place for all students.



### ROCKET SCIENCE

Some of our engineering students collaborated with other Canadian and Norwegian universities in one week of intensive science and design in Norway, culminating in a launch of a student-built rocket from the Andøya Rocket Range!

### SMART

Study with many of Canada's top students. We have the highest percentage of students in Canada who enter university with excellent grades. (*Maclean's*)

## Supporting You

From admission to graduation, we provide you with the people and programs to help you succeed.



**ADMISSION COUNSELLORS** can inform you about programs that interest you, let you know about upcoming deadlines, and help you through the application process for admission and awards.

**Email:** [international@usask.ca](mailto:international@usask.ca)

**Telephone:** +1-306-966-6450

**Online Chat:** [explore.usask.ca/international](https://explore.usask.ca/international)

**ACADEMIC HELP** is available through tutors, academic advisors, professors, classmates and others. In our University Learning Centre, we offer free specialized help in mathematics, statistics, writing and study skills.

**ORIENTATION AND NEW STUDENT WELCOME** are events for you to attend before classes begin. You will tour campus, find your classrooms, meet other new students, learn about your college and benefit from additional programming for international students.



**STUDENT GROUPS AND LEARNING COMMUNITIES** are great ways to make friends at university and get involved in our vibrant campus life. Our student societies and our students' union also provide helpful services.

**WALK-IN MEDICAL SERVICES** at our on-campus health clinic are available to you and your family with your Saskatchewan Health Card. Staffed by medical professionals including counsellors, nurses and doctors (specialists), our clinic can be your family doctor's office during your studies. We are also home to Saskatchewan's leading hospital located right on campus. Health and dental insurance is included in your student fees.

**SUPPORT** of many types:

- employment services
- health and counselling
- multi-faith religious services
- information centres
- learning centre
- disability services



## FACILITIES

- **Bookstore** – buy your textbooks conveniently.
- **Eight libraries on campus** – benefit from over two-million printed resources and a vast electronic network linking you to resources around the globe.
- **On-campus transit stops** – travel easily between campus and the rest of the city with your bus pass (U-Pass) included in your student fees.
- **Over 60 computer labs** – research, finish assignments, scan and print documents on campus, 24 hours.
- **Free WiFi** – connect to your classes, friends and family—no matter where you are on campus.
- **Twenty restaurants and cafeterias** – enjoy a large variety of eastern and western foods made fresh on campus.



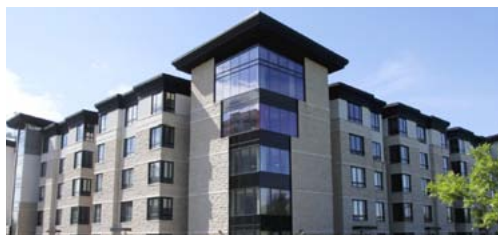


Our **INTERNATIONAL STUDENT AND STUDY ABROAD CENTRE** provides support to international students and their families. The centre is dedicated to fostering a globally aware and engaged campus community. All students—domestic, international and those studying abroad—can participate in a unique international experience through the centre's various programs and services.

- settling in Saskatoon
- meeting new people and getting involved in activities and groups on campus
- referral to services to help improve your English
- study permit, work permit, health card or temporary visa advice

# Living in Residence

Live on or near campus with a supportive group of students, staff and residence life co-ordinators. Apply for residence early, even before you receive your admission letter at [explore.usask.ca/housing](http://explore.usask.ca/housing).



**COLLEGE QUARTER RESIDENCE** (single-student housing) welcomes a diverse mix of international and Canadian students. It is home to hundreds of students who want to learn about other cultures and share about their own.

- stylish, modern four-bedroom apartments shared among diverse students
- volunteer and multi-cultural activities
- meal plans available

**VOYAGEUR PLACE** is an on-campus, dormitory-style residence that houses over 500 students and provides a meal plan. First-year students usually share a room with another student.

### McEOWN PARK

- **Seager Wheeler** (single-student housing) has six-bedroom furnished apartments sharing a common kitchen, dining room and washroom. Meal plans are optional.
- **Souris Hall** provides accommodation for families in two-bedroom unfurnished apartments.



### AFFILIATED RESIDENCES

- **Luther Residence** is a non-smoking, non-drinking residence with single rooms for up to 24 students. A meal plan is provided.
- **Mohyla Institute** offers fully furnished rooms for 50 students and provides a meal plan.
- **St. Andrew's Residence** has 18 single rooms.
- **Sheptytsky Institute**, a non-drinking, non-smoking residence, offers up to 60 students fully-furnished rooms and a meal plan.

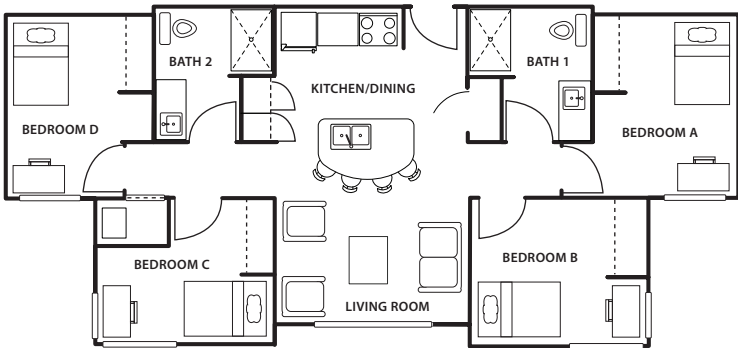
### OFF-CAMPUS LIVING: HOUSE OR APARTMENT

[www.ussu.ca/housing](http://www.ussu.ca/housing)

	U OF S RESIDENCES			AFFILIATED RESIDENCE			
	College Quarter	Voyageur Place	Seager Wheeler	Luther Residence	Mohyla Institute	Sheptytsky Institute	St. Andrew's
On campus		■		■			■
Off campus	■		■		■	■	
Apartment style	■		■				
Dorm style		■		■	■	■	■
Single rooms for first-years				■	■	■	■
Academic hall	■	■	■	■	■	■	
Social hall	■	■	■		■		
Full meal plan mandatory		■		■	■	■	■
Meal plan optional	■		■				
Cable TV option in room	■	■	■		■	■	■
Cable TV option in lounge	■	■	■	■	■	■	■
Internet option in room	■	■	■	■	■	■	■
Internet in lounge	■	■	■		■	■	
Parking	■	■	■	■	■	■	■



COLLEGE QUARTER FOUR-BEDROOM FLOOR PLAN



# Our Undergraduate Programs

## Agriculture and Bioresources

### BACHELOR OF SCIENCE IN AGRIBUSINESS

- |   |   |   |   |
|---|---|---|---|
| <p><b>BACHELOR OF SCIENCE IN AGRICULTURE</b></p> <ul style="list-style-type: none"> <li>■ Agricultural Biology</li> <li>■ Agricultural Economics</li> <li>■ Agronomy</li> </ul> | <ul style="list-style-type: none"> <li>■ Animal Science</li> <li>■ Applied Plant Ecology</li> <li>■ Crop Science</li> </ul> | <ul style="list-style-type: none"> <li>■ Environmental Science</li> <li>■ Food and Bioproduct Sciences</li> </ul> | <ul style="list-style-type: none"> <li>■ Horticultural Science</li> <li>■ Soil Science</li> </ul> |
|---|---|---|---|

- |  |   |  |
|--|---|--|
| <p><b>BACHELOR OF SCIENCE IN RENEWABLE RESOURCE MANAGEMENT</b></p> | <ul style="list-style-type: none"> <li>■ Resource Economics and Policy</li> </ul> | <ul style="list-style-type: none"> <li>■ Resource Science</li> </ul> |
|--|---|--|

- |                        |  |  |
|------------------------|--|--|
| <p><b>DIPLOMAS</b></p> | <ul style="list-style-type: none"> <li>■ Agribusiness</li> </ul> | <ul style="list-style-type: none"> <li>■ Agronomy</li> </ul> |
|------------------------|--|--|

- |                            |  |  |  |  |
|----------------------------|--|--|--|--|
| <p><b>CERTIFICATES</b></p> | <ul style="list-style-type: none"> <li>■ Agriculture                     <ul style="list-style-type: none"> <li>• Crop Production</li> <li>• Farm Business Management</li> </ul> </li> </ul> | <ul style="list-style-type: none"> <li>■ Indigenous Peoples Resource Management</li> </ul> | <ul style="list-style-type: none"> <li>■ Prairie Horticulture                     <ul style="list-style-type: none"> <li>• Fruit and Vegetable Production</li> <li>• Greenhouse Crop Production</li> </ul> </li> </ul> | <ul style="list-style-type: none"> <li>• Landscaping and Arboriculture</li> <li>• Nursery Crop Production</li> </ul> |
|----------------------------|--|--|--|--|

### MINORS ONLY

The following subjects are only offered as minors. Beyond this list, many other agriculture and bioresource subjects offer minors.

- Biotechnology
- Field Crop Production
- Food and Bioproduct Entrepreneurship
- Horticulture
- Nutrition
- Poultry Science
- Rangeland Resources
- Toxicology

## Arts and Science

- |                                |   |   |   |  |
|--------------------------------|---|---|---|--|
| <p><b>BACHELOR OF ARTS</b></p> | <ul style="list-style-type: none"> <li>■ Aboriginal Public Administration</li> <li>■ Anthropology</li> <li>■ Archaeology</li> <li>■ Art History</li> <li>■ Business Economics</li> <li>■ Classical, Medieval and Renaissance Studies</li> <li>■ Community Planning and Native Studies</li> <li>■ Drama</li> </ul> | <ul style="list-style-type: none"> <li>■ Economics</li> <li>■ English</li> <li>■ French</li> <li>■ Geography (Human)</li> <li>■ History</li> <li>■ International Studies                     <ul style="list-style-type: none"> <li>• Development Studies</li> <li>• International Co-operation and Conflict</li> <li>• Latin American Studies</li> <li>• Slavic and Eastern European Studies</li> </ul> </li> <li>■ Linguistics</li> </ul> | <ul style="list-style-type: none"> <li>■ Modern Languages                     <ul style="list-style-type: none"> <li>• French</li> <li>• German</li> <li>• Spanish</li> <li>• Russian</li> </ul> </li> <li>■ Native Studies</li> <li>■ Northern Studies</li> <li>■ Philosophy</li> <li>■ Political Studies</li> <li>■ Psychology</li> <li>■ Public Administration</li> <li>■ Regional and Urban Planning</li> </ul> | <ul style="list-style-type: none"> <li>■ Sociology                     <ul style="list-style-type: none"> <li>• Aboriginal Justice and Criminology</li> <li>• Indigenous Peoples and Justice Programs</li> </ul> </li> <li>■ Studies in Religion and Culture</li> <li>■ Studies in Religious Traditions</li> <li>■ Studio Art</li> <li>■ Theatre History</li> <li>■ Ukrainian/Linguistics</li> <li>■ Ukrainian/Comparative Literature</li> <li>■ Ukrainian Area Studies</li> <li>■ Women's and Gender Studies</li> </ul> |
|--------------------------------|---|---|---|--|

- |                                   |  |   |   |   |
|-----------------------------------|--|---|---|---|
| <p><b>BACHELOR OF SCIENCE</b></p> | <ul style="list-style-type: none"> <li>■ Anatomy and Cell Biology</li> <li>■ Archaeology</li> <li>■ Biochemistry</li> <li>■ Biochemistry and Biotechnology</li> <li>■ Bioinformatics</li> <li>■ Biology</li> <li>■ Biology and Biotechnology</li> <li>■ Biomedical Sciences</li> <li>■ Biomolecular Structure Studies</li> </ul> | <ul style="list-style-type: none"> <li>■ Biotechnology, Microbiology and Immunology</li> <li>■ Chemistry</li> <li>■ Computer Science</li> <li>■ Computing</li> <li>■ Environmental Biology</li> <li>■ Environmental Earth Sciences</li> <li>■ Food Science</li> <li>■ Geography (Physical)</li> </ul> | <ul style="list-style-type: none"> <li>■ Geology</li> <li>■ Geophysics</li> <li>■ Mathematical Physics</li> <li>■ Mathematics                     <ul style="list-style-type: none"> <li>• Applied Mathematics</li> <li>• Pure Mathematics</li> </ul> </li> <li>■ Microbiology and Immunology</li> <li>■ Palaeobiology</li> </ul> | <ul style="list-style-type: none"> <li>■ Physics                     <ul style="list-style-type: none"> <li>• Astronomy</li> <li>• Atmospheric, Space and Plasma Sciences</li> <li>• Material Science</li> <li>• Nuclear Science</li> <li>• Theoretical Physics</li> </ul> </li> <li>■ Physiology and Pharmacology</li> <li>■ Psychology</li> <li>■ Statistics</li> <li>■ Toxicology</li> </ul> |
|-----------------------------------|--|---|---|---|

- |  |   |  |
|--|---|--|
| <p><b>BACHELOR OF ARTS AND SCIENCE</b></p> | <ul style="list-style-type: none"> <li>■ Environment and Society</li> </ul> | <ul style="list-style-type: none"> <li>■ Interactive System Designs</li> </ul> |
|--|---|--|

- |                                     |   |  |
|-------------------------------------|---|--|
| <p><b>BACHELOR OF FINE ARTS</b></p> | <ul style="list-style-type: none"> <li>■ Drama                     <ul style="list-style-type: none"> <li>• Acting</li> </ul> </li> <li>• Design</li> </ul> | <ul style="list-style-type: none"> <li>■ Studio Art</li> </ul> |
|-------------------------------------|---|--|

- |                                 |  |   |
|---------------------------------|--|---|
| <p><b>BACHELOR OF MUSIC</b></p> | <ul style="list-style-type: none"> <li>■ Composition and Theory</li> <li>■ Individualized</li> </ul> | <ul style="list-style-type: none"> <li>■ Musicology</li> <li>■ Performance</li> </ul> |
|---------------------------------|--|---|

### MINORS ONLY

The following subjects are only offered as minors. Beyond this list, many other arts and science subjects offer minors.

- Canadian Literature in English
- Catholic Studies
- Classics
- Crime, Law and Justice Studies
- Critical Perspectives on Social Justice and the Common Good
- Digital Culture and New Media
- Entrepreneurship
- Geographic Information Systems
- Jazz Studies
- Jewish and Christian Origins
- Philosophy, Science and Technology
- Urban Planning
- Water Science

St. Thomas More College

- Humanities
- Social Sciences

Visit [stmcollege.ca](http://stmcollege.ca) for specific programs and subjects offered through STM.

## Edwards School of Business

BACHELOR OF COMMERCE	<ul style="list-style-type: none"> <li>Accounting</li> <li>Finance</li> <li>Human Resources</li> </ul>	<ul style="list-style-type: none"> <li>Management                             <ul style="list-style-type: none"> <li>Aboriginal</li> <li>Co-operatives</li> <li>Agribusiness</li> <li>Entrepreneurship and Family Business</li> </ul> </li> <li>Global Business</li> <li>Not-For-Profit</li> </ul>	<ul style="list-style-type: none"> <li>Marketing</li> <li>Operations Management</li> </ul>	
CERTIFICATES	<ul style="list-style-type: none"> <li>Business Administration</li> <li>Aboriginal Business Administration</li> </ul>	<ul style="list-style-type: none"> <li>Executive Business Administration</li> <li>International Business Administration</li> </ul>		
OPTIONS	<ul style="list-style-type: none"> <li>Business Co-operative Education Program</li> </ul>			

## Education

BACHELOR OF EDUCATION	<ul style="list-style-type: none"> <li>Aurora College Teacher Education Program</li> <li>Combined Education/Music (Music Education)</li> </ul>	<ul style="list-style-type: none"> <li>Home Economics</li> <li>Industrial Arts</li> </ul>	<ul style="list-style-type: none"> <li>Indian Teacher Education Program (ITEP)</li> <li>Northern Teacher Education Program (NORTEP)</li> </ul>	<ul style="list-style-type: none"> <li>Saskatchewan Urban Native Teacher Education Program (SUNTEP)</li> </ul>
CERTIFICATES	<ul style="list-style-type: none"> <li>Adult and Continuing Education</li> <li>Special Education</li> </ul>	<ul style="list-style-type: none"> <li>Secondary Technical Vocational Education</li> </ul>	<ul style="list-style-type: none"> <li>Teaching English as a Foreign Language</li> </ul>	<ul style="list-style-type: none"> <li>Teaching English as a Second Language</li> </ul>

## Engineering

BACHELOR OF SCIENCE IN ENGINEERING	<ul style="list-style-type: none"> <li>Biological Engineering                             <ul style="list-style-type: none"> <li>Biomechanical Systems Engineering</li> <li>Bioprocess Engineering</li> <li>Natural Resources Engineering</li> </ul> </li> </ul>	<ul style="list-style-type: none"> <li>Chemical Engineering                             <ul style="list-style-type: none"> <li>Biochemical Option</li> <li>Petroleum Option</li> </ul> </li> <li>Civil Engineering</li> </ul>	<ul style="list-style-type: none"> <li>Computer Engineering</li> <li>Electrical Engineering</li> <li>Engineering Physics</li> </ul>	<ul style="list-style-type: none"> <li>Environmental Engineering</li> <li>Geological Engineering</li> <li>Mechanical Engineering</li> </ul>
OPTIONS	<ul style="list-style-type: none"> <li>Engineering Entrepreneurship</li> </ul>	<ul style="list-style-type: none"> <li>Engineering Professional Internship Program</li> </ul>	<ul style="list-style-type: none"> <li>Professional Communication</li> </ul>	

## Kinesiology

BACHELOR OF SCIENCE IN KINESIOLOGY	<ul style="list-style-type: none"> <li>Combined Kinesiology/Education</li> </ul>	<ul style="list-style-type: none"> <li>Exercise and Sport Studies                             <ul style="list-style-type: none"> <li>Leisure and Sport Administration</li> <li>Professional Health and Fitness</li> </ul> </li> </ul>	<ul style="list-style-type: none"> <li>Physical Education Studies</li> </ul>	<p><b>MINORS ONLY</b></p> <ul style="list-style-type: none"> <li>Nutrition</li> <li>Entrepreneurship</li> </ul>
------------------------------------	--	---	--	---

## NON DIRECT ENTRY PROGRAMS

The following programs require specific university prerequisites prior to admission. For the most accurate and up-to-date admission requirements and prerequisites for these programs, please visit each college/program website.

Dentistry	DOCTOR OF DENTAL MEDICINE	
Education	BACHELOR OF EDUCATION	<ul style="list-style-type: none"> <li>Combined Kinesiology/Education</li> <li>Sequential Programs                             <ul style="list-style-type: none"> <li>Elementary/Middle Years</li> <li>Secondary</li> </ul> </li> </ul>
Law	JURIS DOCTOR	
Medicine	DOCTOR OF MEDICINE	The College of Medicine currently only considers Canadian citizens and permanent residents for admission, with the exception of specific contractual agreements with other institutions.
Nursing	BACHELOR OF SCIENCE IN NURSING	
Nutrition and Dietetics	BACHELOR OF SCIENCE IN NUTRITION	
Pharmacy	BACHELOR OF SCIENCE IN PHARMACY	
Veterinary Medicine	DOCTOR OF VETERINARY MEDICINE	The College of Veterinary Medicine currently only considers Canadian citizens and permanent residents for admission, with the exception of specific contractual agreements with other institutions.



# Tuition, Fees and Living Expenses

Costs shown are from 2011-2012 and are in Canadian dollars. Find the most up-to-date information at [explore.usask.ca/moneymatters](http://explore.usask.ca/moneymatters).

Costs for most full-time first-year students:

■ International Student Tuition <sup>1</sup>	\$12675 - \$15997
■ Canadian Citizen Tuition <sup>1</sup>	\$4875 - \$6153
■ Student Fees	\$348 - \$731
■ Books and Supplies	\$500 - \$1000
■ Residence <sup>2</sup>	\$4400 - \$7031
■ Other Expenses	\$1000 - \$1450
<b>International Total</b>	<b>\$18923 - \$26209</b>
<b>Canadian Total</b>	<b>\$11123 - \$16365</b>

1. Tuition assessed on a per credit unit basis and by residency status (Canadian or international).

2. Costs vary depending on residence choice. These are based on 2011 rates for off-campus residence at Seager Wheeler (six-person apartment-style, with \$150 per month for groceries) versus on-campus residence at Voyageur Place (double occupancy with meals).



## GUARANTEED SCHOLARSHIPS

When you apply for admission, you are automatically considered for either Guaranteed Entrance Scholarships (\$500 CAD – \$3000 CAD) or Transfer Scholarships (\$1000 CAD – \$2000 CAD). We notify you about your scholarship in your admission letter.

## COMPETITIVE AWARDS

Apply for other scholarships, bursaries and awards at [explore.usask.ca/awards](http://explore.usask.ca/awards).



## INTERNATIONAL STUDENT RENEWABLE ENTRANCE SCHOLARSHIPS

Each year, International Student Renewable Entrance Scholarships, valued up to \$45000 CAD over four years, are awarded to top international students studying on a valid study permit. The recipients will also be guaranteed a room in our on-campus residence. Apply for this scholarship online by April 1:

[explore.usask.ca/international/scholarships](http://explore.usask.ca/international/scholarships)

“ I really appreciate that the Canadian government has provided equal opportunity to Canadian citizens and international students to compete for this scholarship. It inspires me to research, explore and show what I can do.”

Rita Orji to *Research News*  
\$150000 Vanier Graduate Scholarship recipient



*Rita is a computer science graduate student from Nigeria. Her research focuses on developing applications for Facebook and smartphones that help Canadians make wiser diet and health choices.*



**OUR  
ALUMNI  
INCLUDE:**

2

Nobel  
Prize  
Winners

1

Prime  
Minister of  
Canada

1

Governor  
General and  
Commander  
in Chief

3

Governor General  
Award Winners  
(1 *Literary Fiction*;  
2 *Literary Non-fiction*)

1

Oscar  
Winner

4

Olympic  
Gold  
Medalists

119

Members of  
the Order of  
Canada

92

Officers of  
the Order  
of Canada

70

Rhodes  
Scholars

1

Lasker  
Prize  
Winner

2

Judges of the  
Supreme Court  
of Canada

# Graduate Studies and Research

[usask.ca/cgsr](http://usask.ca/cgsr)

If you already have an undergraduate (bachelor's) degree, we offer approximately 125 graduate degree programs. Generally, tuition is \$4820 CAD per year, but some specialized programs have tuition that is different.



## ADMISSION REQUIREMENTS

These are the minimum requirements for admission to the College of Graduate Studies and Research. Individual departments may have different admission requirements, which can be found online or discussed with graduate studies representatives in each department. English proficiency requirements can be found at [usask.ca/cgsr/admission/language.php](http://usask.ca/cgsr/admission/language.php).

## MASTER'S DEGREE

You require a four-year bachelor's degree—usually at the honours level—or equivalent from a recognized college or university with a high academic average or equivalent in the last two years of full-time study. Alternatively, you could hold a three-year first-cycle undergraduate degree in an academic discipline relevant to your proposed field of study, from a European institution that meets the criteria set forth in the Bologna Declaration.

## DOCTORAL DEGREE

You require a bachelor's and a master's degree from a recognized university with a high academic average or equivalent in the last two years of full-time study.

## POSTGRADUATE DIPLOMA

You require a four-year honours degree or equivalent from a recognized college or university with a high academic average or equivalent in the last two years of full-time study.

## HOW TO APPLY TO GRADUATE STUDIES

1. See all our programs, with department contact information, online.
2. Contact the department or researcher with whom you are interested in working.
3. Apply for admission online and pay the application fee.
4. Submit a brief statement of purpose and curriculum vitae.
5. Have the following required documents sent directly from their source to the U of S:
  - official transcripts translated into English
  - three letters of reference
  - proof of English language proficiency
6. You will receive a letter of admission. Please respond to it and confirm your acceptance.



## Graduate-level Programs

MAJORS	MASTER'S	DOCTORATE
Agricultural and Bioresource Engineering	■	■
Agricultural Economics	■	■
Anatomy and Cell Biology	■	■
Animal and Poultry Science	■	■
Anthropology	■	
Archaeology	■	
Art and Art History	■	
Biochemistry	■	■
Biological Psychiatry	■	■
Biology	■	■
Biomedical Engineering	■	■
Bioresource Policy, Business and Economics	■	■
Biostatistics	■	■
Business Administration	■	
Chemical Engineering	■	■
Chemistry	■	■
Civil and Geological Engineering	■	■
Community Health and Epidemiology	■	■
Computer Science	■	■
Curriculum Studies	■	■**
Economics	■	
Educational Administration	■	■
Educational Foundations	■	
Educational Psychology and Special Education	■	■**
Electrical and Computer Engineering	■	■
English	■	■

MAJORS	MASTER'S	DOCTORATE
Environment and Sustainability	■	■
Environmental Engineering	■	■
Epidemiology		■
Finance and Management Science	■	
Food and Bioproduct Sciences: Applied Microbiology	■	■
Food and Bioproduct Sciences: Food Science	■	■
Geography and Planning	■	■
Geological Sciences	■	■
Health Sciences	■	■
History	■	■
Interdisciplinary Studies	■	■
International Trade ( <i>Online Only</i> )	■	
Kinesiology	■	■
Linguistics	■	
Large Animal Clinical Sciences	■	■
Law	■	
Mathematics and Statistics	■	■
Mechanical Engineering	■	■
Microbiology and Immunology	■	■
Music	■	
Native Studies	■	■**
Northern Governance and Development	■	
Nursing	■	■
Nutrition	■	■
Pathology and Laboratory Medicine	■	■
Pharmacology	■	■

MAJORS	MASTER'S	DOCTORATE
Pharmacy	■	■
Philosophy	■	
Physical Therapy	■	
Physics and Engineering Physics	■	■
Physiology	■	■
Plant Science	■	■
Political Studies	■	
Professional Accounting	■	
Psychology	■	■
Public Administration	■	
Public Health	■	
Public Policy	■	■
Religion and Culture	■**	
Small Animal Clinical Sciences	■	■
Sociology	■	■
Soil Science	■	■
Surgery	■	
Sustainable Environment Management	■	
Toxicology	■	■
Vaccinology and Immunotherapeutics	■	■
Veterinary and Biomedical Sciences	■	■
Veterinary Microbiology	■	■
Veterinary Pathology	■	■
Writing	■	

\*\* Special case master's and doctorate programs may be available in some of the above departments that do not have approved programs.

# Undergraduate Admission Policy

**Step 1.** Complete Secondary-level Standing (High School)

**Step 2.** Complete Prerequisite Subjects for Your Program  
 These are the general subject requirements for each college, and we will consider the specific subjects you have taken on a case-by-case basis.

COLLEGE	AGRICULTURE AND BIORESOURCES	ARTS AND SCIENCE	BUSINESS	EDUCATION	ENGINEERING	KINESIOLOGY	
<b>DEGREE</b>	<ul style="list-style-type: none"> <li>Bachelor of Science in Agriculture (B.S.A.)</li> <li>Bachelor of Science in Renewable Resource Management [B.Sc. (RRM)]</li> <li>Diploma in Agronomy (Dipl.Agron)</li> </ul>	<ul style="list-style-type: none"> <li>Bachelor of Science in Agribusiness [B.Sc. (Agbus)]</li> <li>Diploma in Agribusiness (Dipl.Agbus)</li> </ul>	<ul style="list-style-type: none"> <li>Bachelor of Arts (B.A.)</li> <li>Bachelor of Science (B.Sc.)</li> <li>Bachelor of Arts and Science (B.A.Sc.)</li> <li>Bachelor of Fine Arts (B.F.A.)</li> </ul>	<ul style="list-style-type: none"> <li>Bachelor of Commerce (B.Comm.)</li> </ul>	<ul style="list-style-type: none"> <li>Home Economics (B.Ed.)</li> <li>Industrial Arts (B.Ed.)</li> <li>Combined Bachelor of Education/Bachelor of Music in Music Education[B.Ed/B.Mus. (Mus.Ed)]</li> </ul>	<ul style="list-style-type: none"> <li>Bachelor of Engineering (B.E.)</li> </ul>	<ul style="list-style-type: none"> <li>Bachelor of Science in Kinesiology [B.Sc. (Kin)]</li> </ul>
<b>REQUIRED SUBJECTS</b>	<ul style="list-style-type: none"> <li>Biology</li> <li>Chemistry</li> <li>Mathematics</li> </ul> <p><i>You may be admitted into this college with one subject deficiency that must be cleared before the second year of study.</i></p>	<ul style="list-style-type: none"> <li>Biology or Chemistry or Physics</li> <li>Mathematics</li> </ul>	<ul style="list-style-type: none"> <li>Mathematics</li> </ul> <p><i>You can be admitted without mathematics, but you must contact your academic advisor when you are admitted to discuss how to meet this requirement.</i></p>	<ul style="list-style-type: none"> <li>Mathematics</li> </ul>	<ul style="list-style-type: none"> <li>Approved natural science*</li> <li>Approved history</li> <li>Approved language* or fine art*</li> <li>Approved mathematics*</li> <li>An online interview will also be required.</li> </ul> <p><i>* You can be admitted without one of these subjects, but you must contact your academic advisor when you are admitted. This requirement must be cleared prior to your second year of study.</i></p>	<ul style="list-style-type: none"> <li>Calculus</li> <li>Chemistry</li> <li>Mathematics</li> <li>Physics</li> </ul> <p><i>In addition to meeting the admission average, you must meet a specific academic standard in the above subjects.</i></p>	<ul style="list-style-type: none"> <li>Biology</li> <li>Chemistry or Physics</li> <li>Mathematics</li> </ul>

**Step 3.** Meet the Admission Average for Your Program

Find some country-specific admission information online at [explore.usask.ca/international](http://explore.usask.ca/international). If you have attempted/completed 18 credit units of transferrable (college- or university-level) courses, admission will be based on your post-secondary marks. Otherwise, your admission average is based on five approved Senior Secondary-level marks. Grades are converted to correspond with Canadian grading systems.

- **One Senior Secondary-level first-language Literature and Composition**
- **One Senior Secondary-level mathematics\***
- **Three other approved Senior Secondary-level subjects:**
  - Maximum of **two** natural sciences
  - Maximum of **two** social sciences or humanities
  - Maximum of **one** fine or performing art

\* If you have no mathematics, we will calculate your admission average with a minimum pass for that subject.

## Step 4. Provide Proof of English Proficiency

[explore.usask.ca/international](https://explore.usask.ca/international)

If your first language is not English, you are required to provide documents proving English proficiency prior to the deadline to submit supporting documents for admission. These documents must be sent directly to our office from the issuing authority. Note: English proficiency requirements are different for nursing. Please contact the College of Nursing for details.

Proof of English proficiency typically is not required if you are from a country where English is the official language. Find a list of these countries at [explore.usask.ca/international](https://explore.usask.ca/international).

COMMON TESTS AND QUALIFICATIONS	MINIMUM SCORE REQUIRED
<b>TOEFL</b> (institutional TOEFL not accepted) Test of English as a Foreign Language	<ul style="list-style-type: none"> <li>■ <b>Internet Based: 80</b> with minimum individual scores of:               <ul style="list-style-type: none"> <li>□ Reading: <b>19</b></li> <li>□ Listening: <b>19</b></li> <li>□ Speaking: <b>18</b></li> <li>□ Writing: <b>18</b></li> </ul> </li> <li>■ <b>Paper Based: 550</b></li> </ul>
<b>IELTS</b> (Academic) International English Language Testing System	Band Score: <b>6.5</b>
<b>CanTEST</b> Canadian Test of English for Scholars and Trainees	Listening and Reading: <b>4.5 Average</b> ; Writing: <b>4.0</b>
<b>CAEL</b> Canadian Academic English Language Assessment	<b>60</b>
<b>MELAB</b> Michigan English Language Assessment Battery	<b>85</b>
<b>CPE</b> Cambridge Proficiency in English	<b>Grade of C</b>
<b>IB English</b> International Baccalaureate	IB English A1 or A2: <b>grade of 4</b> ; IB English B: <b>grade of 5</b>
<b>AP English</b> Advanced Placement	AP English: <b>grade of 3</b>
<b>GCSE/IGCSE/GCE or A/AS/AICE Level English</b>	GCSE/IGCSE/GCE O-Level English, English Language or English as a Second Language: <b>grade of B</b> <b>OR</b> GCE A/AS/AICE Level English or English Language: <b>grade of C</b>
<b>Full-time study* where English is the official language of instruction and examination</b> * If study occurred more than five years ago, additional proof may be required.	High School (Secondary) <ul style="list-style-type: none"> <li>■ <b>At least 2.5 years of full-time study</b>, including successful consecutive completion of English literature and composition in Grades 11 and 12 with at least 70% in each Grade 12 English course.</li> <li>■ <b>Two years of full-time study</b>, including successful consecutive completion of English literature and composition in Grades 11 and 12 with at least 80% in each Grade 12 English course.</li> </ul> Post-secondary <ul style="list-style-type: none"> <li>■ Successful completion of <b>at least 18 transferrable credit units</b>.</li> <li>■ The post-secondary institution must declare English to be the primary language of instruction and examination throughout the institution, not just in select departments.</li> </ul>
<b>Academic English: University Preparation 2 (UP2) at the U of S Language Centre</b>	Successful completion of UP2. See next page.

## U of S Language Centre and Conditional Admission

If you have not met English proficiency requirements and enrol in Academic English at the University of Saskatchewan Language Centre, you can be conditionally admitted to the U of S College of Arts and Science or College of Agriculture and Bioresources, provided that you meet all other university admission qualifications. Upon successful completion of University Preparation 2 (UP2) and meeting all the other admission requirements, you are granted unconditional admission to a U of S academic program. If your first choice is another program such as business or engineering, admission to one of these can be considered once you have completed UP2.

### STUDY ENGLISH

[www.learnenglish.usask.ca](http://www.learnenglish.usask.ca)

Since 1980, students from all over the world have come to the University of Saskatchewan Language Centre to improve their English language skills.

The English program has six levels, starting at Basic 10 and ending at University Preparation 2 (UP2). Once you are finished UP2, you can be granted full admission to U of S direct entry programs. For 2012, tuition for each 10-week term is \$3100 CAD.

Each full-time English course offers the following:

- 4 start dates – January, March, June or September
- 20 hours of classroom instruction each week for 10 weeks
- New students are asked to live in homestays during their first term
- Small classes, approximately 14 students
- Instruction in all aspects of English (reading, writing, grammar, speaking, listening, pronunciation and vocabulary development)
- Extensive program of recreational and cultural activities
- Academic skills needed for success in university studies (taking notes, doing research, writing essays, group work and making presentations)
- Cultural Adaptation Program to introduce important aspects of Canadian life
- Access to all university services, including the library, Physical Activity Complex, email, Internet, academic advising, restaurants and more



For more information on how to apply to Academic English and undergraduate programs together, contact us.

# GCSE/IGCSE/GCE O-Levels and GCE A-Levels

## GENERAL REQUIREMENTS FOR ALL PROGRAMS

For admission to the University of Saskatchewan, you must have completed at least five suitable GCSE (General Certificate of Secondary Education)/IGCSE (International General Certificate of Secondary Education)/GCE (General Certificate of Education) O-Level subjects and at least two GCE A-Level subjects. The five GCSE subjects must in all cases include Mathematics and a first-language literature/composition course.

**EARLY ADMISSION:** You may apply for admission in the year you will be sitting for A-Level final examinations if you submit at least five suitable GCSE O-Level results and predicted A-Level results.

**TRANSFER CREDIT:** You may be eligible to receive transfer credit towards a degree for A-Level subjects completed with a grade of at least C. To qualify, you must provide a course syllabus to the admissions office for review.

**AS-LEVEL ADMISSION:** Alternatively, if you do not intend to sit for any A-Level exams, you may be considered for admission if you have completed four acceptable Advanced Subsidiary Level subjects. Generally, two AS-Level subjects are considered equivalent to one GCE A-Level subject. Please contact the admissions office for more information.

## COLLEGE SPECIFIC REQUIREMENTS

In addition to the general requirements, you must present required subjects and have achieved a competitive average for your college of choice.

COLLEGE	REQUIRED SUBJECTS <sup>1</sup>	COMPETITIVE AVERAGE REQUIREMENTS (2011)
<b>Agriculture and Bioresources</b>		
<ul style="list-style-type: none"> <li>Bachelor of Science in Agriculture (B.S.A.)</li> <li>Bachelor of Science in Renewable Resource Management [B.Sc. (RRM)]</li> <li>Diploma in Agronomy (Dipl.Agron)</li> </ul>	<b>GCE A-Level</b> <ul style="list-style-type: none"> <li>Biology</li> <li>Chemistry</li> <li>Mathematics</li> </ul>	Grades of at least C on individual GCSE/IGCSE/GCE O-Level subjects, and grades of at least D on individual GCE A-Level subjects.
<ul style="list-style-type: none"> <li>Bachelor of Science in Agribusiness [B.Sc. (Agbus)]</li> <li>Diploma in Agribusiness (Dipl.Agbus)</li> </ul>	<b>GCE A-Level</b> <ul style="list-style-type: none"> <li>Mathematics</li> <li>Biology or Chemistry or Physics</li> </ul>	
<b>Arts and Science</b>		
<ul style="list-style-type: none"> <li>Bachelor of Arts (B.A.)</li> <li>Bachelor of Science (B.Sc.)</li> <li>Bachelor of Arts and Science (B.A.Sc.)</li> <li>Bachelor of Fine Arts (B.F.A.)</li> </ul>	Certain university courses have prerequisites required prior to registration.	Grades of at least C on individual GCSE/IGCSE/GCE O-Level subjects, and grades of at least D on individual GCE A-Level subjects.
<b>Business</b>		
<ul style="list-style-type: none"> <li>Bachelor of Commerce (B.Comm.)</li> </ul>	<b>GCE A-Level</b> <ul style="list-style-type: none"> <li>Mathematics</li> </ul>	An average of at least B on GCSE/IGCSE/GCE O-Level and GCE A-Level subjects.
<b>Education</b>		
<ul style="list-style-type: none"> <li>Home Economics (B.Ed.)</li> <li>Industrial Arts (B.Ed.)</li> <li>Bachelor of Education/Bachelor of Music in Music Education [B.Ed./B.Mus. (Mus.Ed)]</li> </ul>	<b>GCSE/IGCSE/GCE O-Level or A-Level</b> <ul style="list-style-type: none"> <li>Biology or Chemistry or Physics</li> <li>History</li> <li>Approved second language or fine art</li> <li>Mathematics</li> <li>An online interview will also be required.</li> </ul>	Approximate grades of at least C on individual GCSE/IGCSE/GCE O-Level subjects, and grades of at least D on individual GCE A-Level subjects were required in addition to the interview.
<b>Engineering</b>		
<ul style="list-style-type: none"> <li>Bachelor of Engineering (B.E.)</li> </ul>	<b>B or higher in GCSE/IGCSE/GCE O-Level</b> <ul style="list-style-type: none"> <li>Chemistry</li> </ul> <b>C or higher in GCE A-Level</b> <ul style="list-style-type: none"> <li>Mathematics</li> <li>Physics</li> <li><i>A-Level Chemistry is recommended</i></li> </ul>	An average of at least B on GCSE/IGCSE/GCE O-Level and GCE A-Level subjects.
<b>Kinesiology</b>		
<ul style="list-style-type: none"> <li>Bachelor of Science in Kinesiology [B.Sc. (Kin)]</li> </ul>	<b>GCE A-Level</b> <ul style="list-style-type: none"> <li>Biology</li> <li>Mathematics</li> <li>Chemistry or Physics</li> </ul>	The top 100+ qualified applicants were admitted after the application deadline with grades of at least A on individual GCSE/IGCSE/GCE O-Level, and grades of at least B on GCE A-Level subjects.

1. You may be admitted to some programs with a deficiency. (See page 18)

Business education subjects (i.e. accounting) and industrial arts subjects are not acceptable for admission. Technical education subjects are not acceptable for admission to kinesiology. The University of Saskatchewan reserves the right to make changes to admissions policies without notice. The competitive averages should be used as a guideline, and do not guarantee admission.

# International Baccalaureate (IB) Diploma

[explore.usask.ca/admission/transfer/ib](http://explore.usask.ca/admission/transfer/ib)

## GENERAL REQUIREMENTS FOR ALL PROGRAMS

For admission to the University of Saskatchewan you must present three subjects at the Higher Level and three subjects at the Standard Level. Subjects must include Mathematics and Language A1. Math Studies is acceptable only for admission to the College of Arts and Science. Transfer credit may be awarded for Higher Level subjects with grades of 5 or higher.

## COLLEGE-SPECIFIC REQUIREMENTS

In addition to the general requirements, you must present required subjects and have achieved a competitive average for your college of choice.

NOTE: If you are enrolled in the IB Certificate program, you may be eligible for admission, provided you meet the general and college-specific requirements.

# Advanced Placement (AP)

[explore.usask.ca/admission/transfer/ap](http://explore.usask.ca/admission/transfer/ap)

If you indicate that you are taking AP courses in secondary school (high school), you will be considered for admission on the basis of your regular Senior Secondary-level subject marks. You must also have completed the specific subjects and average required for your college. You must arrange submission of your AP marks if you write the College Board examinations. Transfer credit may be awarded for AP courses with marks of 4 or higher.

COLLEGE	REQUIRED SUBJECTS (Standard Level or Higher Level) <sup>1</sup>	COMPETITIVE AVERAGE REQUIREMENTS (2011)
<b>Agriculture and Bioresources</b>		
<ul style="list-style-type: none"> <li>▪ Bachelor of Science in Agriculture (B.S.A.)</li> <li>▪ Bachelor of Science in Renewable Resource Management [B.Sc. (RRM)]</li> <li>▪ Diploma in Agronomy (Dipl.Agron)</li> </ul>	<ul style="list-style-type: none"> <li>▪ Biology</li> <li>▪ Chemistry</li> <li>▪ Mathematics</li> </ul>	An average of at least 4 (minimum total of 24 points)
<ul style="list-style-type: none"> <li>▪ Bachelor of Science in Agribusiness [B.Sc.(Agbus)]</li> <li>▪ Diploma in Agribusiness (Dipl.Agbus)</li> </ul>	<ul style="list-style-type: none"> <li>▪ Mathematics</li> <li>▪ Biology or Chemistry or Physics</li> </ul>	
<b>Arts and Science</b>		
<ul style="list-style-type: none"> <li>▪ Bachelor of Arts (B.A.)</li> <li>▪ Bachelor of Science (B.Sc.)</li> <li>▪ Bachelor of Arts and Science (B.A.Sc.)</li> <li>▪ Bachelor of Fine Arts (B.F.A.)</li> </ul>	Certain university courses have prerequisites required prior to registration.	An average of at least 4 (minimum total of 24 points)
<b>Business</b>		
<ul style="list-style-type: none"> <li>▪ Bachelor of Commerce (B.Comm.)</li> </ul>	<ul style="list-style-type: none"> <li>▪ Mathematics</li> </ul>	An average of at least 5 (minimum total of 30 points)
<b>Education</b>		
<ul style="list-style-type: none"> <li>▪ Home Economics (B.Ed.)</li> <li>▪ Industrial Arts (B.Ed.)</li> <li>▪ Bachelor of Education/Bachelor of Music in Music Education [B.Ed./B.Mus. (Mus.Ed)]</li> </ul>	<ul style="list-style-type: none"> <li>▪ Biology or Chemistry or Physics</li> <li>▪ History</li> <li>▪ Approved second language or fine art</li> <li>▪ Mathematics</li> <li>▪ An online interview will also be required.</li> </ul>	An approximate average of at least 4 (minimum total of 24 points) was required in addition to an interview.
<b>Engineering</b>		
<ul style="list-style-type: none"> <li>▪ Bachelor of Engineering (B.E.)</li> </ul>	4 or better in each of: <ul style="list-style-type: none"> <li>▪ Mathematics</li> <li>▪ Further Mathematics</li> <li>▪ Physics</li> <li>▪ Chemistry</li> </ul>	An average of at least 5 (minimum total of 30 points)
<b>Kinesiology</b>		
<ul style="list-style-type: none"> <li>▪ Bachelor of Science in Kinesiology [B.Sc. (Kin)]</li> </ul>	<ul style="list-style-type: none"> <li>▪ Biology</li> <li>▪ Mathematics</li> <li>▪ Chemistry or Physics</li> </ul>	The top 100+ qualified applicants were admitted after the application deadline with an approximate average of at least 5 (minimum total of 30 points).

1. You may be admitted to some programs with a deficiency (see page 18).

**Note:** Theory of Knowledge (TOK), Extended Essay (EE) or Creativity, Action, Service (CAS) are not considered for admission to any college. Business education subjects (i.e. commerce, bookkeeping) and industrial arts subjects are not acceptable for admission to arts and science. Technical education subjects, industrial arts subjects and business education subjects are not acceptable for admission to kinesiology.

The University of Saskatchewan reserves the right to make changes to admissions policies without notice. The competitive averages should be used as a guideline and do not guarantee admission.

## Steps to Become a U of S Student

1.

### APPLY FOR ADMISSION ONLINE.

- Application form: [explore.usask.ca/international](https://explore.usask.ca/international)
- Admission deadlines: [explore.usask.ca/admission](https://explore.usask.ca/admission)

Most undergraduate programs accept applications for the May, July and September terms. Some programs accept applications for the January term.

2.

### SUBMIT SUPPORTING DOCUMENTS.

[explore.usask.ca/international/admission](https://explore.usask.ca/international/admission)

- \$90 CAD application fee
- Preliminary and/or final statement of marks to date, including any secondary school (high school) and post-secondary education documents

*We accept scanned, faxed or mailed copies of your preliminary statement of marks to make a conditional admission decision.*

- Proof of English proficiency, unless you are enrolled at the University of Saskatchewan Language Centre

Official transcripts from secondary school (high school) or any other educational institution must be sent directly from the issuing authority. In cases where only one copy of the official record is produced, a notarized copy should be submitted and originals presented upon arrival.

3.

### PLAN LIVING ARRANGEMENTS.

[explore.usask.ca/housing](https://explore.usask.ca/housing)

Make your living plans early. You do not need to wait for your acceptance letter or study permit to make preliminary plans. If you plan to live in residence, apply as early as possible.

4.

### APPLY FOR A STUDY PERMIT.

[www.cic.gc.ca/english/study](https://www.cic.gc.ca/english/study)

Upon admission, you will receive an official letter of acceptance (conditional or unconditional), which you will need in order to apply for a Canadian Study Permit. Find a complete guide of study permit requirements, preparations and application forms online.

5.

### REGISTER FOR CLASSES.

[www.paws.usask.ca](https://www.paws.usask.ca)

Log in to PAWS (Personalized Access to Web Services) using the login information in your admission letter. PAWS is used for registration, transfer credit, email, finances and more. Academic advisors, whose contact information is in PAWS, are available to assist you in selecting classes for your program of study. Students beginning studies in September, for example, usually register in June.

6.

### LEARN MORE ABOUT U OF S SERVICES FOR INTERNATIONAL STUDENTS.

[www.students.usask.ca/international](https://www.students.usask.ca/international)

# Contact Us

If you have any questions, please contact our friendly and knowledgeable staff!

## INTERNATIONAL RECRUITMENT AND ADMISSIONS

105 Administration Place  
Saskatoon, SK S7N 5A2  
Canada

Tel: +1-306-966-6450

Fax: +1-306-966-2115

Email: [international@usask.ca](mailto:international@usask.ca)

Website: [explore.usask.ca/international](http://explore.usask.ca/international)

## GRADUATE STUDIES AND RESEARCH

Email: [grad.studies@usask.ca](mailto:grad.studies@usask.ca)

Website: [usask.ca/cgsr](http://usask.ca/cgsr)

## U OF S LANGUAGE CENTRE

Email: [register.esl@usask.ca](mailto:register.esl@usask.ca)

Website: [learnenglish.usask.ca](http://learnenglish.usask.ca)

## SASKATOON TOURISM

Website: [tourismsaskatoon.com](http://tourismsaskatoon.com)

## STUDY PERMIT INFORMATION

Website: [cic.gc.ca](http://cic.gc.ca)

## FOLLOW US



UNIVERSITY OF  
SASKATCHEWAN

Saskatoon | Saskatchewan | Canada